

## CAT® MONITORING SYSTEM

### Marine Analog Power Display

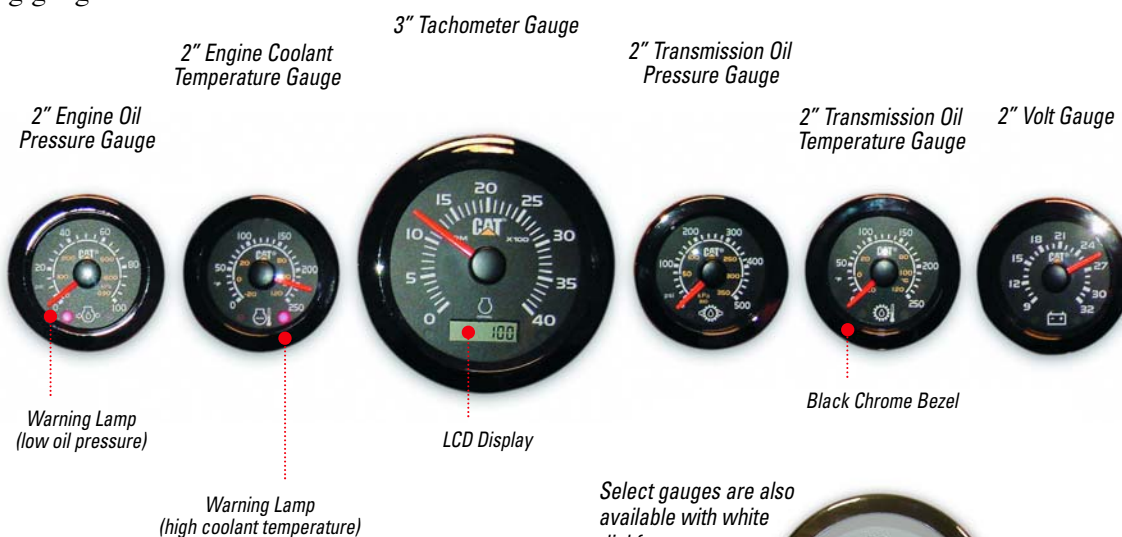
A Caterpillar® Electronic Engine Monitoring System

### Marine Analog Power Display Panel

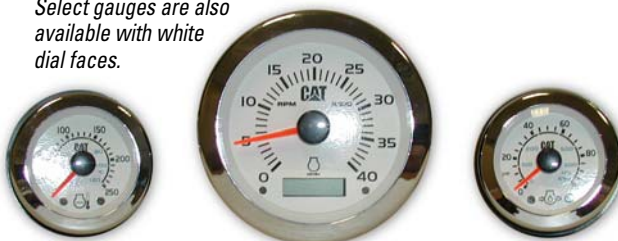


The new Cat Marine Analog Power Display (MAPD) is a system of electronically controlled analog gauges that combines the accuracy and dependability of electronics with the simplicity and visual clarity of conventional analog gauges.

The MAPD system and Cat wiring are designed for “plug and play” installation on Cat electronically controlled marine engines. As many as twelve gauges can be connected providing easy multi-station installation.



Select gauges are also available with white dial faces.



## Features:

- Constructed to withstand harsh marine environment
- Automatically calibrated for accurate trouble-free operation
- Easy to install
- Various sizes and types of gauges available
  - Tachometer, pressure, temperature, level, volt
  - 2 inch and 3 inch diameter gauges
- Up to 12 gauges can be connected to the interface module
- LCD display of hours, distance, and error codes on 3" gauges
- Warning lamps on individual gauges help quickly warn operator of abnormal conditions
- LED backlighted for easy viewing
- Replace EMS and conventional analog gauges on Cat electronically controlled marine engines
- Compatible with J1939 data link system

## MAPD Panel:

A complete and ready to install MAPD panel is available as an option to the individual gauges. This "plug and play" MAPD panel includes a 3" tachometer gauge; 2" engine oil pressure gauge, coolant temperature gauge, inlet manifold temperature gauge, and volt gauge; off/run/start switch; shut down button, and gauge dim button; warning lamp and diagnostic lamp.

There are two additional cutouts in the panel which can be used for other two-inch gauges from the available options at the customer's discretion.



## Available Components:

- **MAPD Panel**
- **Interface Module**
- **Interconnect Harness**
- **Gauges** (All gauges are available with black dial faces. White dial faces available where noted.)

### White Dial Face

- |  |     |
|--|-----|
| 2" • Fuel Level (0 - 4/4)                  | *   |
| • Fuel Rate (0 - 80 gph)                   |     |
| • Fuel Rate (0 - 50 gph)                   |     |
| • Volt (0 - 16 VDC)                        | *   |
| 2" or 3"                                   |     |
| • Fuel Temperature (0 - 250°F)             |     |
| • Fuel Rate (0 - 200 gph)                  |     |
| • Fuel Pressure (0 - 100 psi)              |     |
| • Boost Pressure (0 - 50 psi)              |     |
| • Engine Coolant (0 - 250°F)               | *2" |
| • Manifold Temperature (0 - 250°F)         |     |
| • Oil Pressure (0 - 100 psi)               | *2" |
| • Oil Temperature (0 - 250°F)              |     |
| • Percent Load (0 - 100 %)                 |     |
| • Transmission Oil Temperature (0 - 250°F) | *2" |
| • Transmission Oil Pressure (0 - 500 psi)  | *2" |
| • Volt (9 - 32 VDC)                        | *2" |
| 3" • Tachometer w/LCD (0 - 4000 rpm)       | *   |
| • Tachometer w/LCD (0 - 3600 rpm)          |     |
| • Tachometer w/LCD (0 - 3000 rpm)          |     |
| • Speedometer (0 - 60 knots)               | *   |