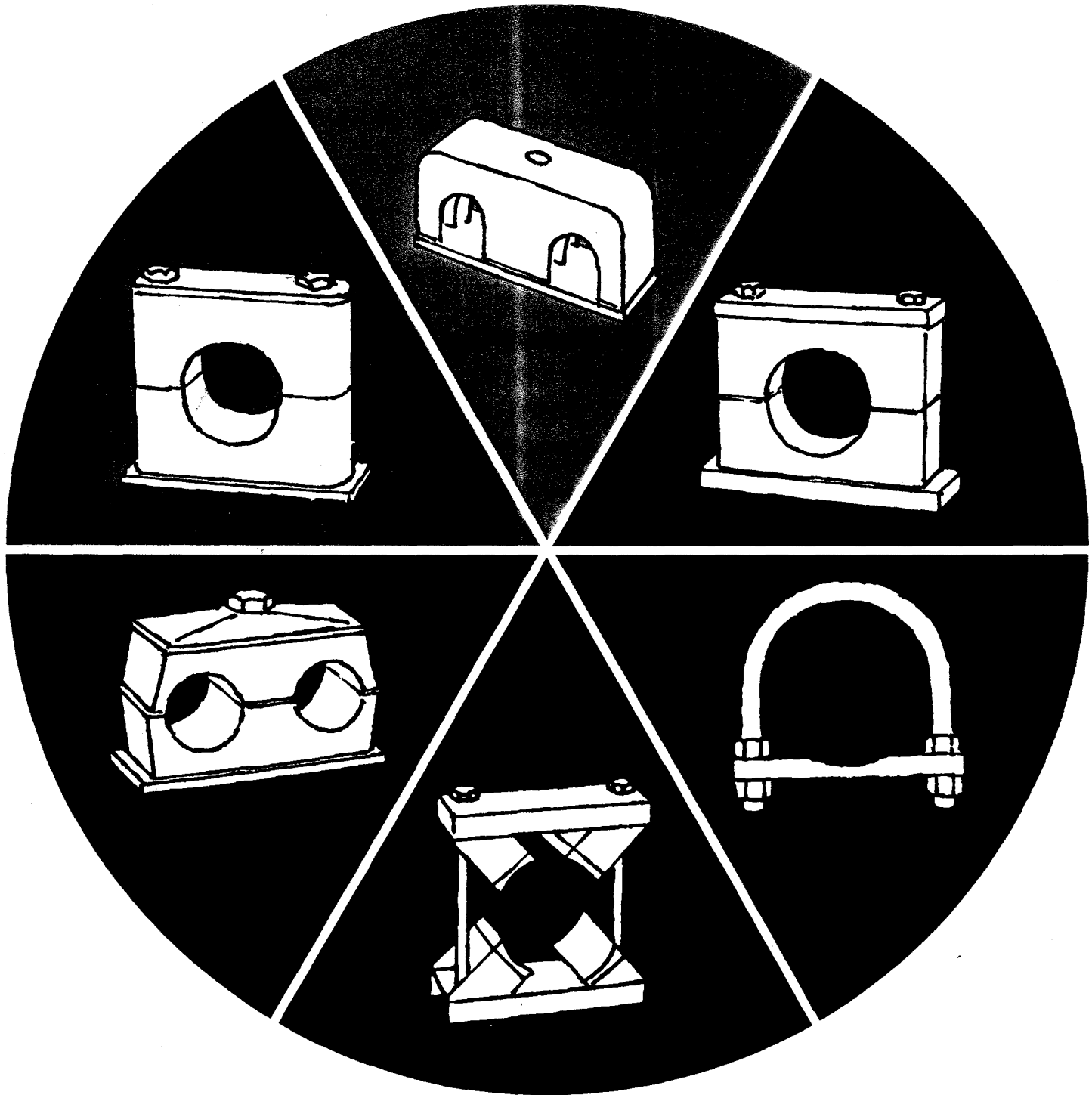
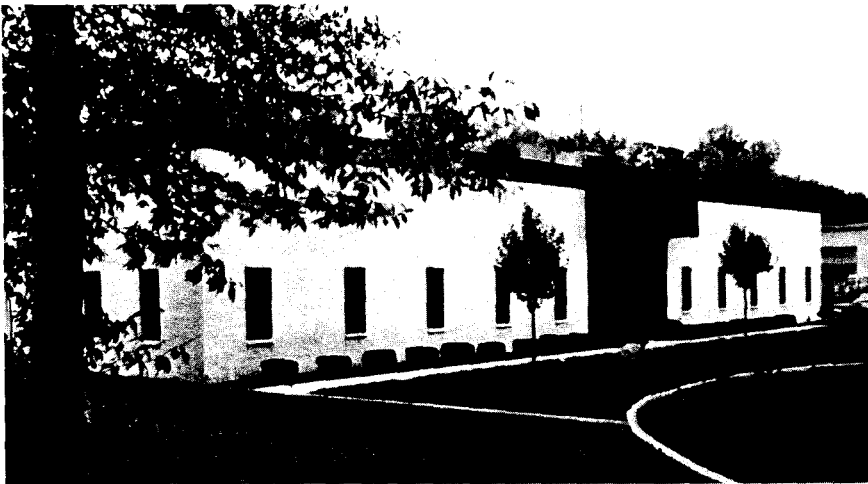


STAUFF CLAMPS



The right clamp
for the right system

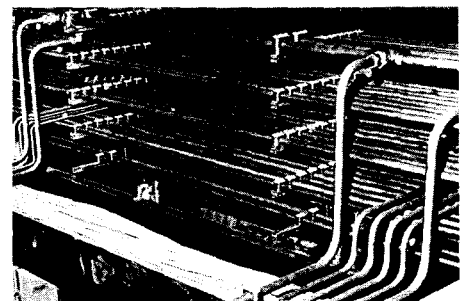
Stauff ...the clamp with a world-wide reputation



Stauff Corporation Headquarters is your one-step source of pipe, tube and hose clamps for every conceivable application. Production, administrative offices and warehousing facilities are all under one roof in our modern building in Waldwick, New Jersey. By constantly keeping abreast of the latest technological developments in the industries we serve, we are able to offer you the finest product available. Stauff maintains a large and complete inventory of all its clamp series to enable you to order quickly

and conveniently to meet your exact requirements. We have the capacity to fill and ship most orders within 24 to 48 hours anywhere within the United States and abroad.

Stauff has designed and developed a top line of clamps that have been extensively field-proven in light and heavy industry, particularly in use with hydraulic equipment and machinery. Although their use has not been limited only to fluid-power applications, their applicability to pressure and non-pressure systems is nearly unlimited because of the wide choice of types and sizes in which they are offered...and they are maintenance free. Single or multiple pipe, tube and hose line installations made with Stauff clamps are always orderly and system modifications can be quickly accomplished. Plant and maintenance engineers appreciate the high shock and vibration absorption capabilities of Stauff clamps, which help to reduce line leakage and system down-time. Shock and vibration absorption also means greater noise reduction, a benefit of ever increasing interest to industrial environmental engineers and government agencies. Industrial plants, mobile equipment, marine companies, engineering and consulting firms and the U.S. Army rely on Stauff clamps. The U.S. Coast Guard, American Bureau of Shipping, Canadian Department of Transport and German Lloyd have approved Stauff clamps for use aboard vessels.

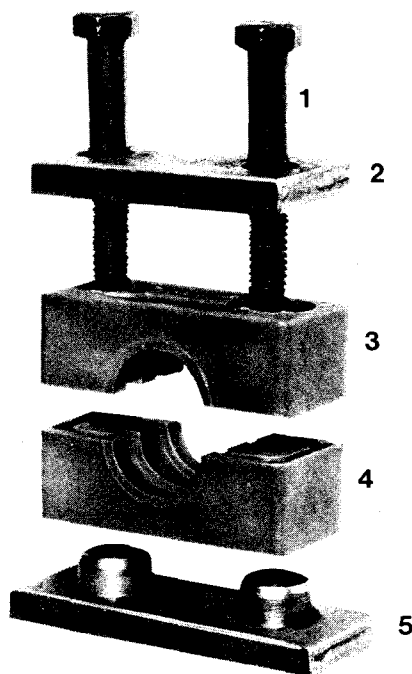


All about clamps...

An Introduction to Stauff Clamps

From this point on in our catalog we would like to familiarize you with Stauff clamps — their parts, functions, sizes, stacking arrangements and installation. All this to make your choice of clamps easier. Specifications and details of Stauff clamps will be found in each clamp series section.

A typical Stauff Heavy Series clamp consists of two bolts, a cover plate, two identical clamp halves and a welding plate. The illustration (below) shows how they are assembled.

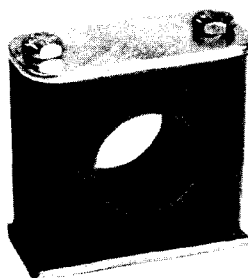


Two bolts (1) hold the entire unit together. The cover plate (2) has the function of applying an equal force distribution over the installed clamp and line. Upper and lower clamp halves (3 and 4) are identically matched for easier installation. A welding plate (5) supports the unit at the base.

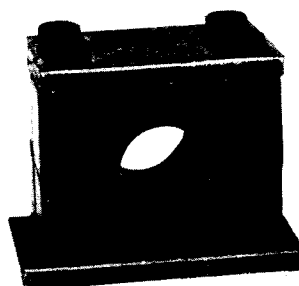
Stauff clamps are manufactured in six different design series. What type series or combination of clamps you select depends on their use in the planned or existing installation and on the various factors involved in each

individual application. The major considerations in selecting a Stauff clamp is based on five important factors: 1) size of pipe, tube or hose; 2) line temperature or ambient temperature, whichever is greater; 3) shocks due to gradual or rapid pressure changes in the system; 4) external impact and/or load; 5) corrosive or non-corrosive environment. The highest working temperature for plastic clamps is limited to 320°F, for aluminum clamps 800°F. Stauff clamp halves are manufactured in polypropylene (PP), Ultramid (UL), and aluminum (ALU) and offered in different sizes for pipe, tube and hose, with outside diameters from 1/8 inch to 32 inches. Metric sizes are also available. Carbon steel hardware is supplied for standard installations. Stainless steel hardware is available for all series and is recommended for applications where corrosive conditions can be a problem. Clamps for special applications are available on request. Example: clamps can be supplied as guides to allow for lateral movement of pipe and tube.

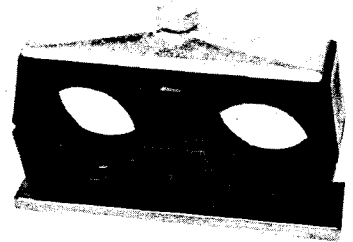
The Stauff series of clamps



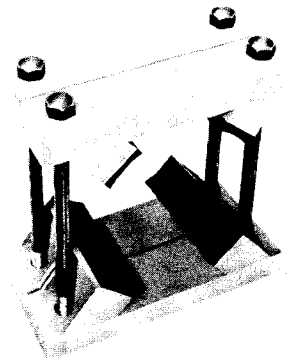
Stauff Standard Series clamps for pipe, tube and hose line installations with an O.D. of 1/4" to 2". Materials: PP, UL, and ALU.



Stauff Heavy Series clamps for pipe, tube or hose from 1/4" to 18" O.D. Material selection is PP, UL, and ALU.



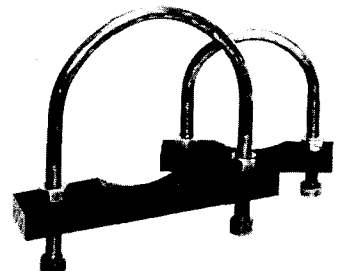
Stauff Twin Series clamps allow two equivalent lines or two unequal lines to be supported by the same clamp. Available in two materials: PP and UL. For pipe, tube or hose in sizes from 1/4" to 1-1/2" O.D.



Stauff Weld Series clamps consist of two welded parts held together with hex head bolts and cushioned with PP, UL, or ALU pads. For O.D. sizes from 8-5/8" to 32".

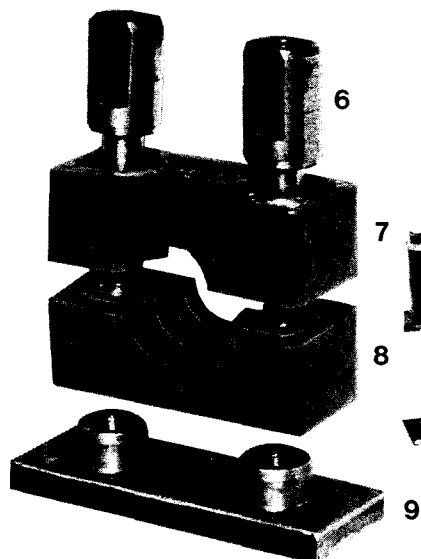
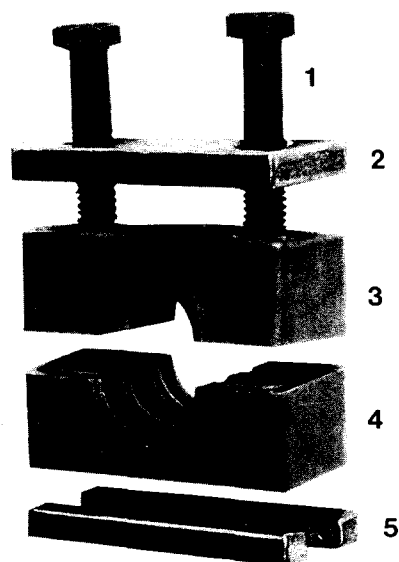


Stauff Lightweight Series clamps are for pipe, tube and hose in single and twin line applications from 1/8" to 1" O.D. Single piece PP or UL construction.



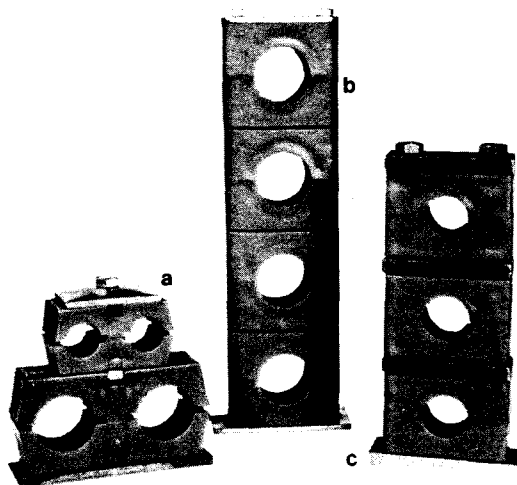
Stauff U-Bolt clamps for pipe in a wide range of sizes from 1" to 30" O.D. The U-Bolt clamp consists of a carbon steel, zinc plated, plastic coated, or stainless steel U-bolt with four nuts and a PP or UL pipe support pad.

Multi-level assemblies are easily accomplished with Stauff's clamping method as shown in the illustrated view:



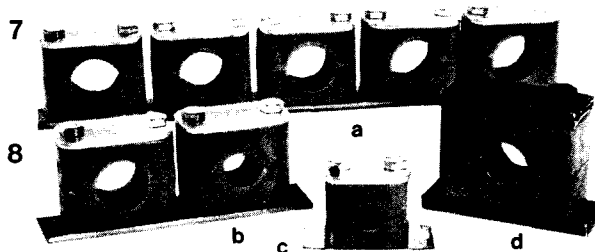
Two bolts (1) which hold the upper stacked unit together screw into stacking bolts (6). The cover plate (2) applies an equal distribution of force over the installed upper clamp and line. Upper and lower clamp halves (3 and 4) are identically matched for easier installation. Safety plate (5) prevents stacking bolts (6) from rotating. The stacking bolts hold the lower clamp unit together and screw into welding plate (9). Another pair of clamp halves (7 and 8) is positioned on the welding plate (9), which holds the completed assembly to the supporting structure.

Various stacking arrangements are possible as illustrated:



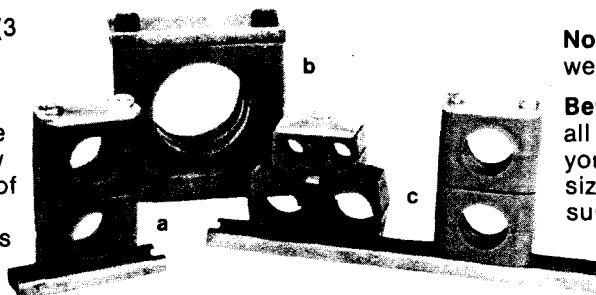
(a) Two Twin Series clamps stacked to support a multiple line arrangement
(b) A stack of four Standard Series clamps
(c) A stack of three Heavy Series clamps

A selection of mounting plates and rails are available as supports for the installation of Stauff clamps.



Mounting Examples - Welding Plates

(a) Five Standard Series clamps on a group welding plate
(b) Two Standard Series clamps on a twin welding plate
(c) Standard Series clamp on an elongated welding plate
(d) One Heavy Series clamp on a single welding plate



Mounting Examples - Rails

(a) Two stacked Standard Series clamps on a rail
(b) Heavy Series clamp on a rail
(c) A stack of two Standard Series clamps and a stack of two Twin Series clamps

Installation procedures

Welding Plates

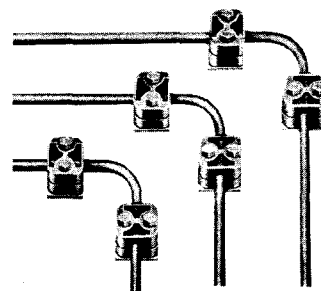
After marking clamp position, arc-weld plate to support. Place bottom clamp half over welding plate nuts. Install line and remaining clamp components. Bolt unit together. (To avoid plastic damage, DO NOT weld plates with plastic clamps in place.)

Rails

Attach rail to support by means of bolts or welding. Insert hex mounting nuts (SM) or milled mounting nuts (GM) into rail and position at desired intervals. Nuts will remain in position even when rail is installed vertically or overhead. Place bottom clamp half over mounting nuts. Install line and remaining clamp components. At this stage, installed lines and clamps can still be repositioned. Tighten bolts. Care should be taken when welding rails with clamp in position. Intense heat will melt plastic clamps.

When you choose Stauff clamps, you only have to follow three basic installation rules:

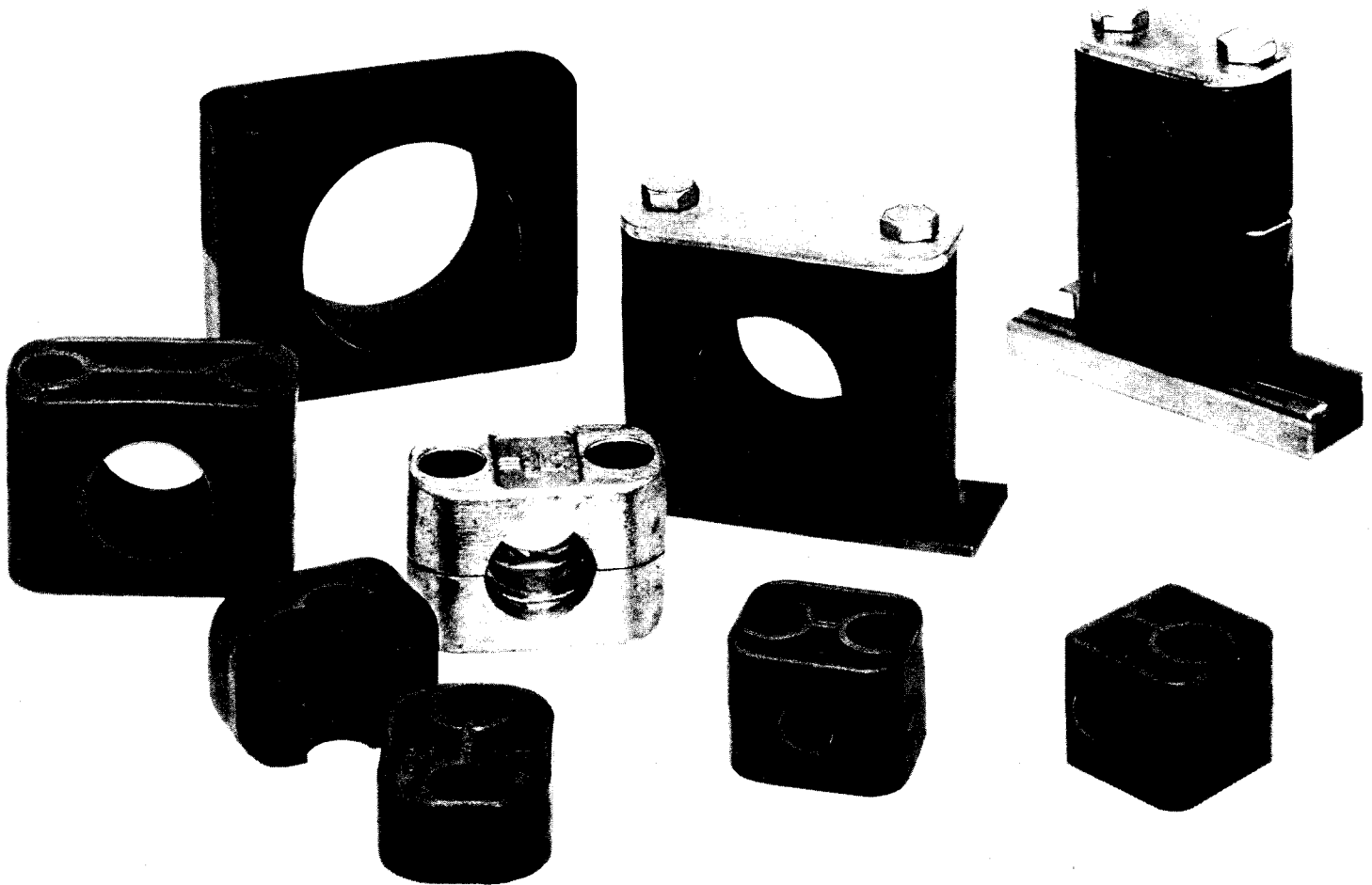
1. Provide an appropriate back-up support for the welding plates or rails.
2. Support pipe or tube by placing clamps on both sides of a bend, as close to the bend as possible.
3. Install Stauff clamps.



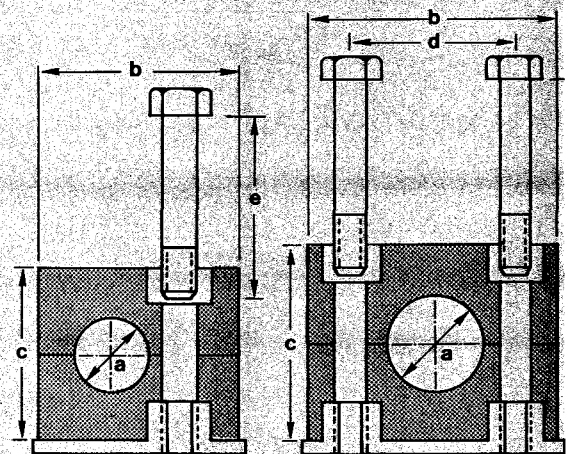
No special tools are required for rail or welding plate installations.

Before you place your order, consider all factors important and unique to your particular installation — quantity, size, type of clamps, clamp material, supports and needed accessories.

STAUFF STANDARD SERIES CLAMPS



STANDARD SERIES DIMENSIONS IN INCHES AND MILLIMETERS										
CLAMP GROUP	TUBE SIZE		PIPE SIZE		b	c	d	e	APPROX. WEIGHT LBS. & GMS.	
	O.D. INCHES a	ORDER NO.	NOMINAL O.D. INCHES a	ORDER NO.					E	DP
1	1/4 3/8	1064 1095	P 1/8 (.405)	1102	1.11 28.19	1.06 26.92	.79 20.07	1-1/16 26.99	.13 58.97	.16 72.58
1a	1/4 3/8	1064a 1095a	P 1/8 (.405)	1102a	1.34 34.04	1.06 26.92	.79 20.07	1-1/16 26.99	.14 63.50	.19 86.18
2	1/2 5/8	2127 2160	P 1/4 (.540) P 3/8 (.675)	2137 2171	1.58 40.13	1.30 33.02	1.02 25.91	1-5/16 33.34	.16 72.58	.25 113.40
3 1	3/4 7/8	3190 3222 3254	P 1/2 (.840)	3213	1.89 48.01	1.38 35.05	1.30 33.02	1-3/8 34.93	.19 86.18	.27 122.47
4			P 3/4 (1.050)	4266	2.25 57.15	1.66 42.16	1.58 40.13	1-21/32 42.07	.25 113.40	.31 140.62
5	1-1/4 1-1/2	5318 5381	P 1 (1.315) P 1-1/4 (1.660)	5334 5421	2.75 69.85	2.28 57.91	2.05 52.07	2-1/4 57.15	.28 127.01	.38 172.37
6	1-3/4 2	6445 6508	P 1-1/2 (1.900)	6483	3.39 86.11	2.60 66.04	2.60 66.04	2-5/16 58.74	.38 172.37	.50 226.80



Standard Series Clamps will accommodate tube, pipe and hose in a choice of sizes from 1/4 inch to two inches O.D. Clamp halves are available in polypropylene (PP), Ultramid (UL) or aluminum (ALU). Clamps can be used with welding plates or mounted on rails. A complete Standard Series Clamp consists of two identically matched halves with a welding plate, hex head bolts and inserts. A cover plate is available as an option. NOTE: Unless otherwise specified, (PP) clamp halves and standard carbon steel hardware will be supplied. When ordering clamps for stacking arrangements, safety washers (SI) will be included with stacking bolts (AF). Clamps used for hose applications must specify hose O.D. when ordering. Stainless steel hardware is available for all groups. Custom clamps or clamp bore sizes other than standard may be ordered as a special item. Metric sizes are also available.

Technical information may be found in Tech. Bulletin.

When ordering Stauff Clamps refer to price list.

General applications: Instrumentation, pilot and power lines; machine tools; construction and agricultural equipment; marine hydraulics; food machinery; bottling equipment; hydraulic power packs; material handling and plant equipment.

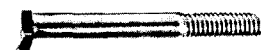
Parts



DP Cover plate group 1



DP Cover Plate Group 1A thru 6



AS Hex Bolt



E Plastic or Steel Insert



AF Stacking Bolt



SI Safety Washer

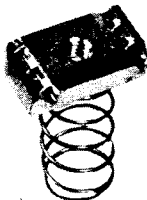


SIG Safety Plate

Unistrut Accessories



TN Transfer Nipple



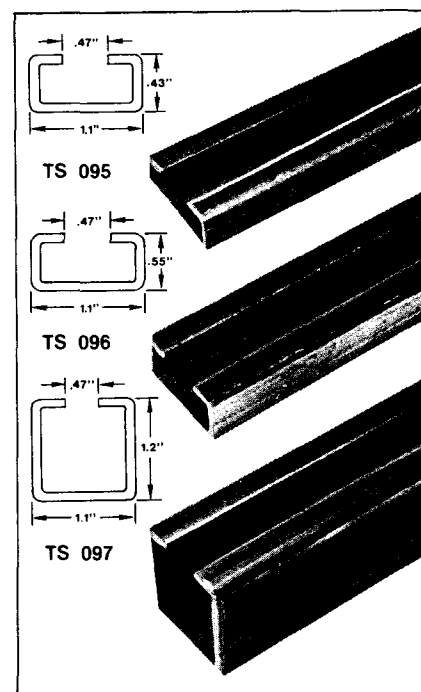
SN Spring Nut

BP Base Plate



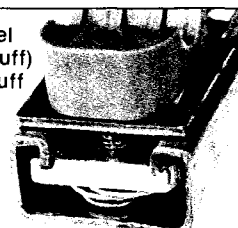
Stauff Rails

Available in standard lengths of 3.28 ft. and 6.56 ft. in .080 inch gauge carbon steel. Special lengths available upon request.



Unistrut Channel

Unistrut Channel (not sold by Stauff) shown with Stauff mounting accessories.



SM Hex Nut



SP Single Welding Plate



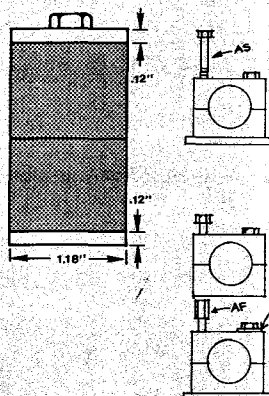
SPV Elongated Single Welding Plate



DSPV Twin Welding Plate



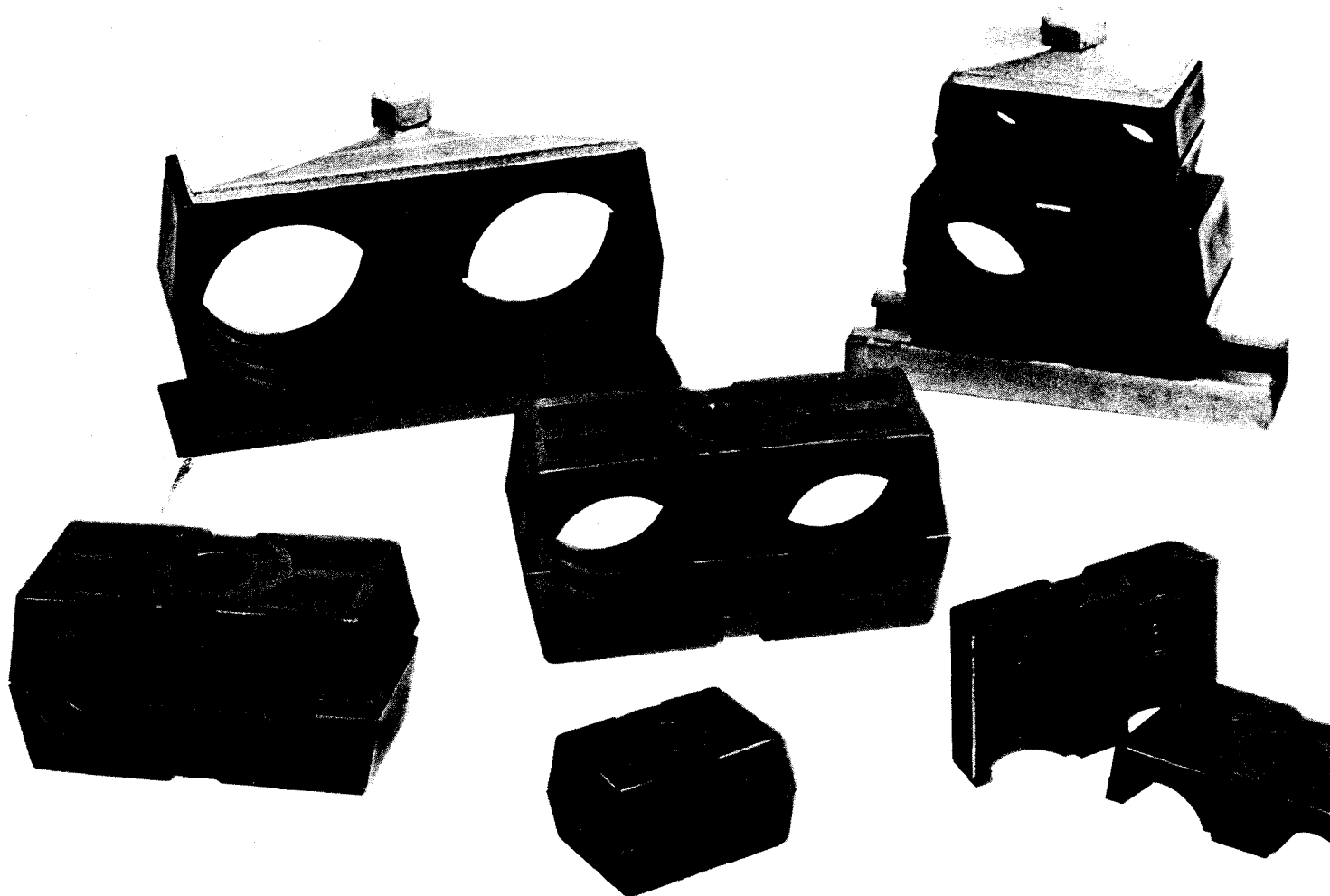
RAP Group Welding Plate



WELDING PLATE DIMENSIONS IN INCHES AND MILLIMETERS

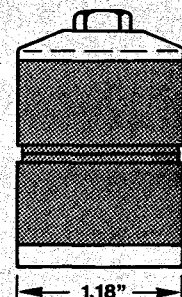
CLAMP GROUP	SP	SPV	DSPV		RAP	
			NO. OF CLAMPS	CENTER DISTANCE	NO. OF CLAMPS	CENTER DISTANCE
1	1.30 33.02	1.85 46.99	2	—	10	1.18 29.97
1a	1.38 35.05	2.17 55.12	2	1.38 35.05	10	1.38 35.05
2	1.69 42.93	2.44 61.98	2	1.69 42.93	10	1.69 42.93
3	1.91 48.51	2.72 69.09	2	2.05 52.07	10	2.05 52.07
4	2.36 59.94	3 76.20	2	2.36 59.94	5	2.36 59.94
5	2.72 69.09	3.43 87.12	2	2.95 74.93	5	2.95 74.93
6	3.46 87.88	4.33 109.98	2	3.54 89.92	5	3.54 89.92

STAUFF TWIN SERIES CLAMPS



TWIN SERIES DIMENSIONS AND WEIGHTS IN INCHES AND MILLIMETERS - POUNDS AND GRAMS

CLAMP GROUP	TUBE SIZE		ORDER NO.	PIPE SIZE		ORDER NO.	b	c	d	e	HEX BOLTS INCHES	APPROX. WEIGHT LBS. AND GMS.
	O.D.			NOMINAL (O.D.)								
	a ₁	a ₂		a ₁	a ₂							
1	1/4	1/4	1064/64	P 1/8 (.405)	1/8	1102/102	1.42	.79	.79	1.46	1/4 x 1	.13 58.97
	3/8	3/8	1095/95				36.07	20.07	20.07	37.08		
2	1/2	1/2	2127/127	P 1/4 (.540)	1/4	2137/137	2.09	1.02	1.14	2.17	5/16 x 1-3/8	.62 140.61
	5/8	5/8	2160/160	P 3/8 (.675)	3/8	2171/171	53.09	25.97	28.96	55.12		
3	3/4	3/4	3190/190	P 1/2 (.840)	1/2	3213/213	2.64	1.46	1.42	2.76	5/16 x 1-3/4	.37 172.36
	7/8	7/8	3222/222				67.06	37.08	36.07	70.10		
4				P 3/4 (1.050)	3/4	4266/266	3.18	1.65	1.77	3.35	5/16 x 2	.50 226.80
							80.77	41.91	44.96	85.09		
5	1-1/4	1-1/4	5318/318	P 1 (1.315)	1	5334/334	4.17	2.13	2.20	4.33	5/16 x 2-1/2	.77 285.76
	1-1/2	1-1/2	5381/381	P 1-1/4 (1.660)	1-1/4	5421/421	105.92	54.10	55.88	109.98		



Twin Series Clamps permit two installed lines to be supported by a single clamp and one bolt. For tube, pipe and hose applications — in sizes from 1/4 inch to 1-1/2 inches O.D. Clamps may be ordered as a complete unit or as individual parts. A complete Twin Series Clamp consists of a welding plate, two identically matched halves and a hex head bolt. Twin clamps of Group 1 are supplied with a washer. Clamps in Group 2 through 5 are supplied with an arched cover coverplate. Twin Series Clamps halves are available in polypropylene (PP) and Ultramid (UL). NOTE: Unless otherwise specified, (PP) clamp halves and standard carbon steel hardware will be supplied. Twin clamps stack easily and any clamp combination within Groups 2 through 5 is permissible. Twin clamps with two bores of different sizes are available upon request. Metric sizes are also available. Clamps may be used with weld plates or mounted on rails. Clamps used for hose applications must specify hose O.D. when ordering. Stainless steel hardware is available for all groups.

Technical information may be found in Tech. Bulletin.

When ordering Stauff Clamps refer to price list.

General applications: Instrumentation, pilot and power lines; machine tools; construction and agricultural equipment; marine hydraulics; food machinery; bottling equipment; hydraulic power packs; material handling and plant equipment.

Parts



US Washer Group 1



GD-DS Cover Plate



AS-DS Hex Bolt



AF-DS Stacking Bolt



SI-DS Safety Washer



SP-DS Welding Plate



SM-DS Hex Nut For Rail Installation

Unistrut Accessories



TN-DS Transfer Nipple

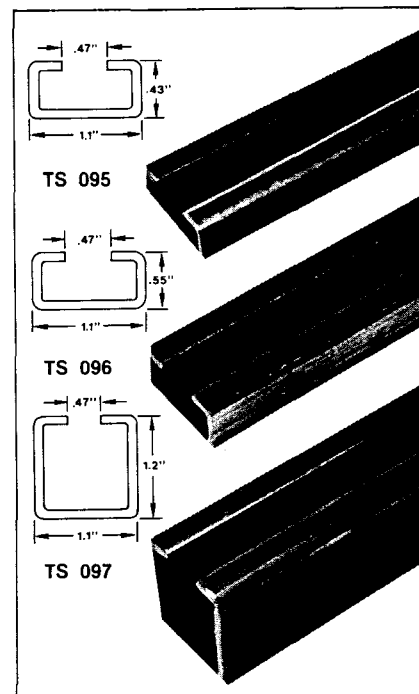
SN-DS Spring Nut

BP-DS Base Plate

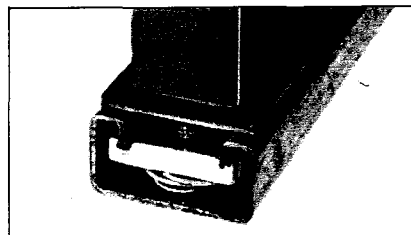


Stauff Rails

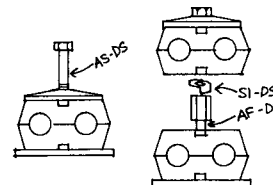
Available in standard lengths of 3.28 ft. and 6.56 ft. in .080 inch gauge carbon steel. Special lengths available upon request.



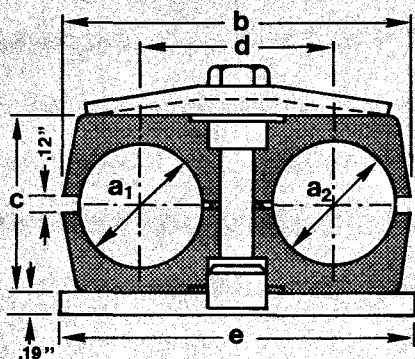
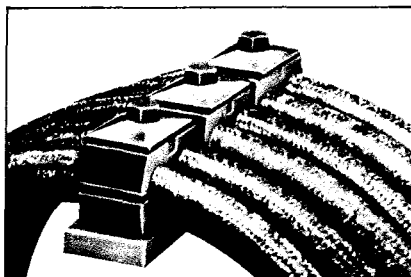
Unistrut Channel



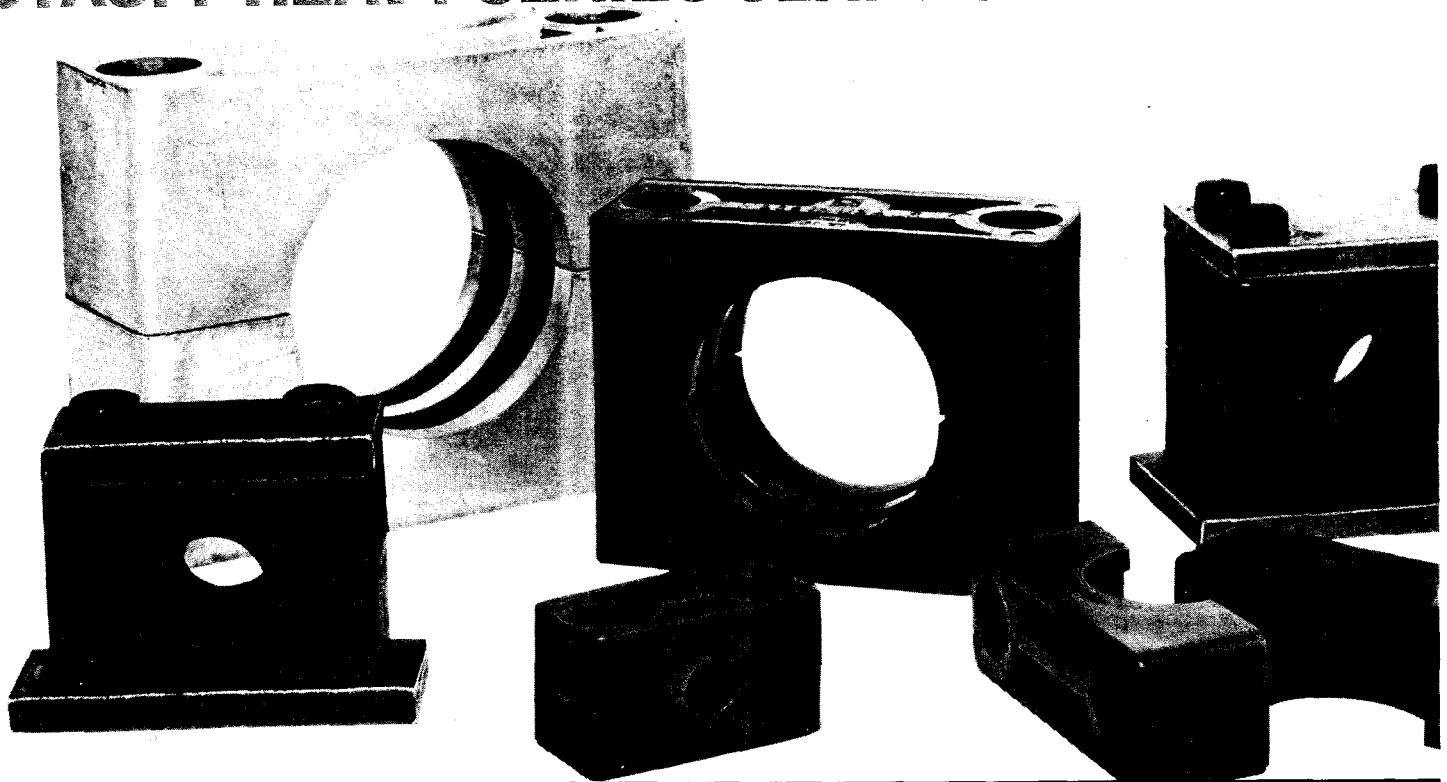
Unistrut Channel (not sold by Stauff) shown with Stauff mounting accessories.



Stauff Twin Series Clamps are a practical and economical means of supporting bundles of hose on hydraulic and pneumatic equipment. Twin Clamps are designed to securely fasten and space hose of the same or varying diameters, therefore, allowing a combination of hose sizes to be used in the same installation. Stauff Twin Clamps can be directly fastened to a support structure simply by omitting the welding plate, tapping holes in the support and fastening each clamp with longer hex head bolts and corresponding nuts.



STAUFF HEAVY SERIES CLAMPS



HEAVY SERIES DIMENSIONS IN INCHES AND MILLIMETERS - WEIGHT IN POUNDS AND KILOGRAMS

CLAMP GROUP	TUBE a O.D.	PIPE a NOM. O.D.	ORDER NO.	b	c	d	e	f	g	h	i	j	k	l	UNC HEX BOLT	WT. LBS. & GMS.
3s	1/4		3064S	2.25	1.25	1.25	2.50	2.87	.08	.31	.94	2.13	1.30	1.25	3/8 x 1-3/4	.75
	3/8		3095S	57.15	31.75	31.75	63.50	72.90	2.03	7.87	23.88	54.10	33.02	31.75		.34
	1/2	1/8 (.405)	3103S													
		1/4 (.540)	3127S													
	5/8	3/8 (.675)	3137S 3160S 3171S													
4s	3/4		4190S	2.72	1.88	1.25	2.50	3.35	.08	.31	1.25	2.75	1.77	1.25	3/8 x 2-1/4	.94
	7/8	1/2 (.840)	4213S	69.09	47.75	31.75	63.50	85.09	2.03	7.87	31.75	69.85	44.96	31.75		.43
			4222S													
			4254S													
	1	3/4 (1.050)	4267S													
5s	1-1/4		5318S	3.31	2.38	1.25	2.50	3.94	.08	.31	1.50	3.25	2.36	1.25	3/8 x 2-3/4	1.13
		1 (1.315)	5334S	84.07	60.45	31.75	63.50	100.08	2.03	7.87	38.10	82.55	59.94	31.75		.51
	1-1/2	1-1/4 (1.660)	5381S 5422S													
6s	1-3/4	1-1/4 (1.660)	6422S	4.53	3.53	1.75	3.50	5.90	.13	.38	2.14	4.58	3.53	1.80	7/16 x 4	2.81
		1-1/2 (1.900)	6445S	115.06	89.66	44.45	88.90	149.86	3.30	9.65	54.36	116.33	89.66	45.72		1.27
	2		6483S													
	2-1/4		6509S													
		2 (2.375)	6572S													
	2-1/2		6603S													
7s	2-3/4		7700S	6.00	4.72	2.25	4.50	7.87	.14	.38	2.73	5.89	4.81	2.38	5/8 x 5-1/4	5.38
		2-1/2 (2.875)	7730S	152.40	119.89	57.15	114.30	199.90	3.56	9.65	69.34	149.61	122.17	60.45		2.43
	3		7762S													
	3-1/2	3 (3.500)	7889S													
8s	4		8102S	8.06	6.69	3.00	6.00	10.00	.17	.50	3.84	8.19	6.63	3.19	3/4 x 7-1/4	13.13
	4-1/2	4 (4.500)	8114S	204.72	169.93	76.20	152.40	254.00	4.32	12.70	97.54	208.03	168.40	81.03		5.96
	5		8127S													
9s	5		9127S	9.81	7.88	3.50	7.00	11.750	.17	.50	4.44	9.45	8.06	3.56	7/8 x 8-1/2	17.19
	5-1/4		9133S	249.17	200.15	88.90	177.80	298.45	4.32	12.70	112.78	240.03	204.72	90.42		7.80
		5 (5.563)	9141S													
	6	6 (6.625)	9152S 9168S													
10s		6 (6.625)	10168S	12.44	10.63	4.50	9.38	14.44	.17	.75	6.06	12.88	10.44	4.88	1-1/8 x 11-1/2	47.5
		8 (8.625)	10203S	315.98	270.00	114.30	238.25	366.78	4.32	19.05	153.92	327.15	265.18	123.95		21.55
			10219S													
11s		8 (8.625)	11219S	18.13	16.16	6.00	12.50	20.13	.55	1.00	9.08	19.00	15.69	6.38	1-1/4 x 17-1/2	111.5
		10 (10.750)	11273S	460.50	410.46	152.40	317.50	511.30	13.97	25.40	230.63	482.60	398.53	162.05		50.58
		12 (12.750)	11324S													
12s		14 (14.000)	12356S	24.50	20.88	7.00	14.38	26.50	.78	1.00	11.44	23.72	21.06	7.25	1-1/4 x 22	297.00
		16 (16.000)	12406S	622.30	530.35	177.80	365.25	673.10	19.81	25.40	290.58	602.49	534.92	184.15		134.72
		18 (18.000)	12457S													

Heavy Series Clamps are available in a single unit two bolt clamp or a single unit four bolt clamp. Cover plates and weld plates are supplied to match the unit ordered. Choose from a selection of sizes from 1/4 inch to 18 inches O.D. for pipe, tube or hose applications. Clamps can be ordered as a complete unit or as individual parts. A complete Heavy Series Clamp consists of a welding plate, two identically matched halves with a cover plate and hex head bolts. Clamp halves are available in polypropylene (PP) Ultramid (UL) or aluminum (ALU). NOTE: Unless otherwise specified, (PP) clamp halves and standard carbon steel hardware will be supplied. When ordering clamps for stacking arrangements, a safety plate (SIP) will be included with stacking bolts. Clamps may be used with weld plates or mounted on rails. Clamps used for hose applications must specify hose O.D. when ordering. Custom clamps or bore sizes other than standard may be ordered as a

special item. Metric sizes are also available. Stainless steel hardware is available for all groups.

Technical information may be found in Tech. Bulletin.

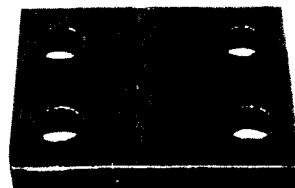
When ordering Stauff Clamps refer to price list.

General applications: Steel mills, presses, mining equipment, forging equipment, heavy-off-highway equipment, offshore installations and nuclear power plants.

Parts



DPAL Two Bolt Cover Plate



DPAS Four Bolt Cover Plate



AS-S Hex Bolt



AF-S Stacking Bolt



IS-S Socket Cap Screw Bolt



SIP Safety Plate

Unistrut Accessories



TN-S Transfer Nipple
TN10 3/8" size 3S-5S
TN12 7/16" size 6S

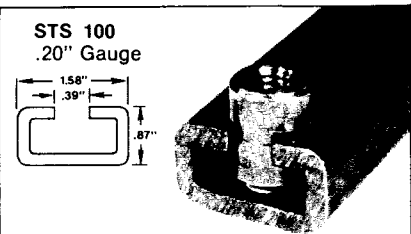
SN-S Spring Nut

BP-S Base Plate



Stauff Rails

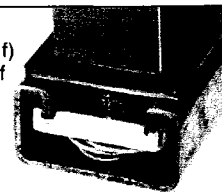
Available in standard lengths of 3.28 and 6.56 ft. in .20 inch gauge carbon steel. Special lengths available upon request. NOTE: Mounting of clamps on rails is limited to Groups 3S through 6S.



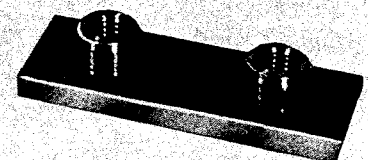
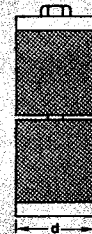
GM Milled Nut With Plastic Plug
GM 10 3/8" size 3S-5S
GM 12 7/16" size 6S

Unistrut Channel

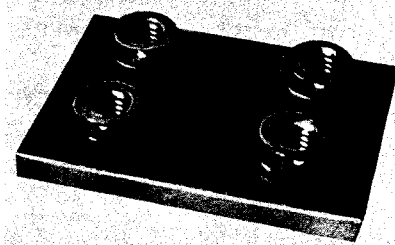
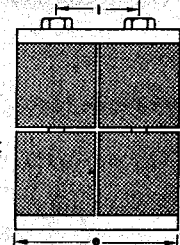
Unistrut Channel (not sold by Stauff) shown with Stauff mounting accessories.



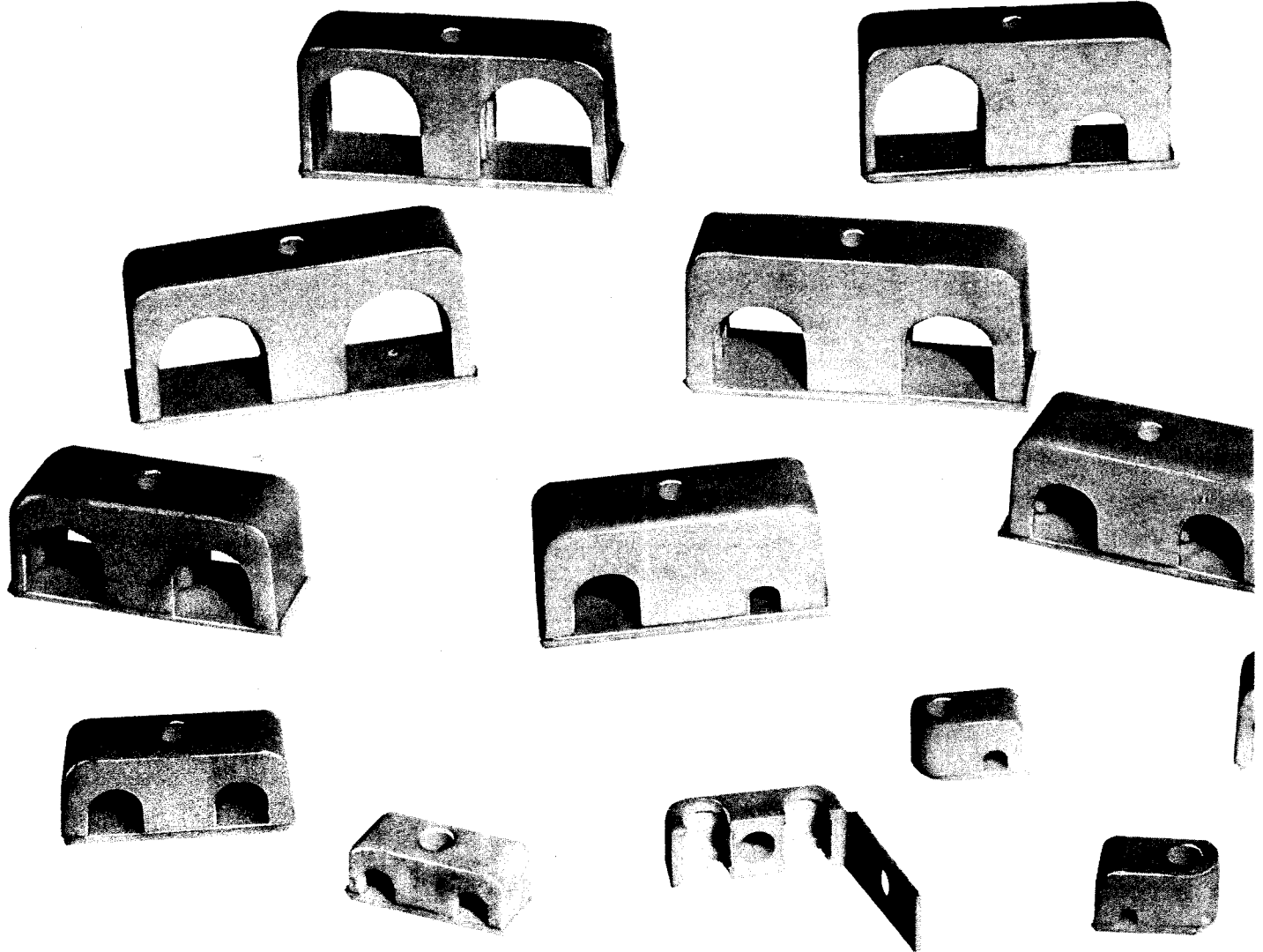
SPAL Two Bolt Single Clamp Weld Plate



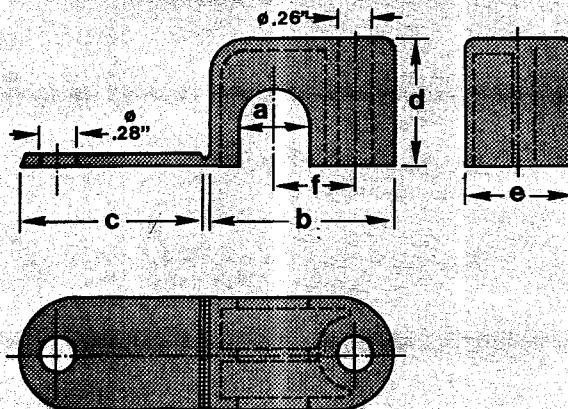
SPAS Four Bolt Double Clamp Weld Plate



STAUFF LIGHTWEIGHT SERIES CLAMPS



LB LIGHTWEIGHT SERIES DIMENSIONS IN INCHES AND MILLIMETERS						
CLAMP GROUP	O.D. a	b	c	d	e	f
1	1/8	.87 22.10	.87 22.10	.41 10.41	.47 11.94	.35 8.89
	1/4					
	5/16					
2	3/8	1.06 26.92	1.06 26.92	.57 14.48	.63 16.00	.43 10.92
	7/16					
3	1/2	1.34 34.04	1.34 34.04	.89 22.61	.79 20.07	.59 14.99
	9/16					
	5/8					
4	3/4	1.65 41.91	1.65 41.91	1.18 29.97	.79 20.07	.75 19.05
	7/8					
	1					



Lightweight Series Clamps are available in three designs for pipe, tube and hose applications in sizes from 1/8 inch to 1 inch O.D.

Clamps are made of polypropylene or Ultramid in a one-piece construction with a hinged flap.

These lightweight clamps can be attached with a single screw or bolt to carrier plates, machine parts and walls. The versatility of these clamps provide you with a means of supporting one or two lines of equal O.D. sizes. Clamps with unequal O.D. sizes can be ordered upon request. Other thermoplastic material and custom colors can be supplied.

Technical information may be found in Tech. Bulletin.

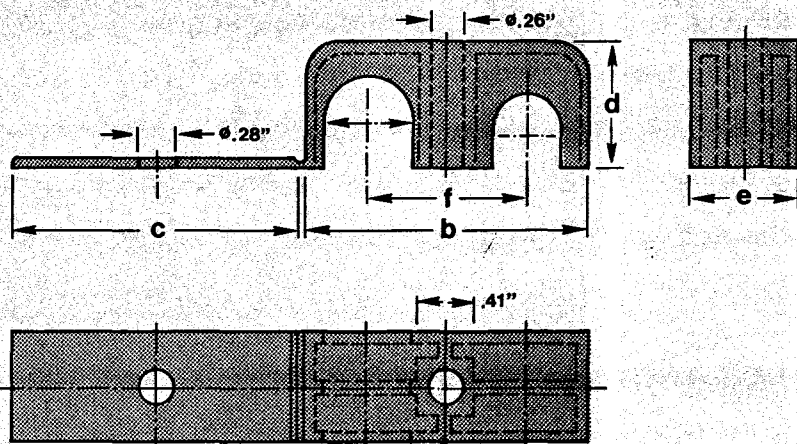
When ordering Stauff Clamps refer to price list.

General applications: Transport equipment, agricultural equipment, cable and wire installations, marine, power steering, power brakes and power controls.

LB Lightweight Clamp for one line

LBG Lightweight Clamp for two lines of equal outside diameter.

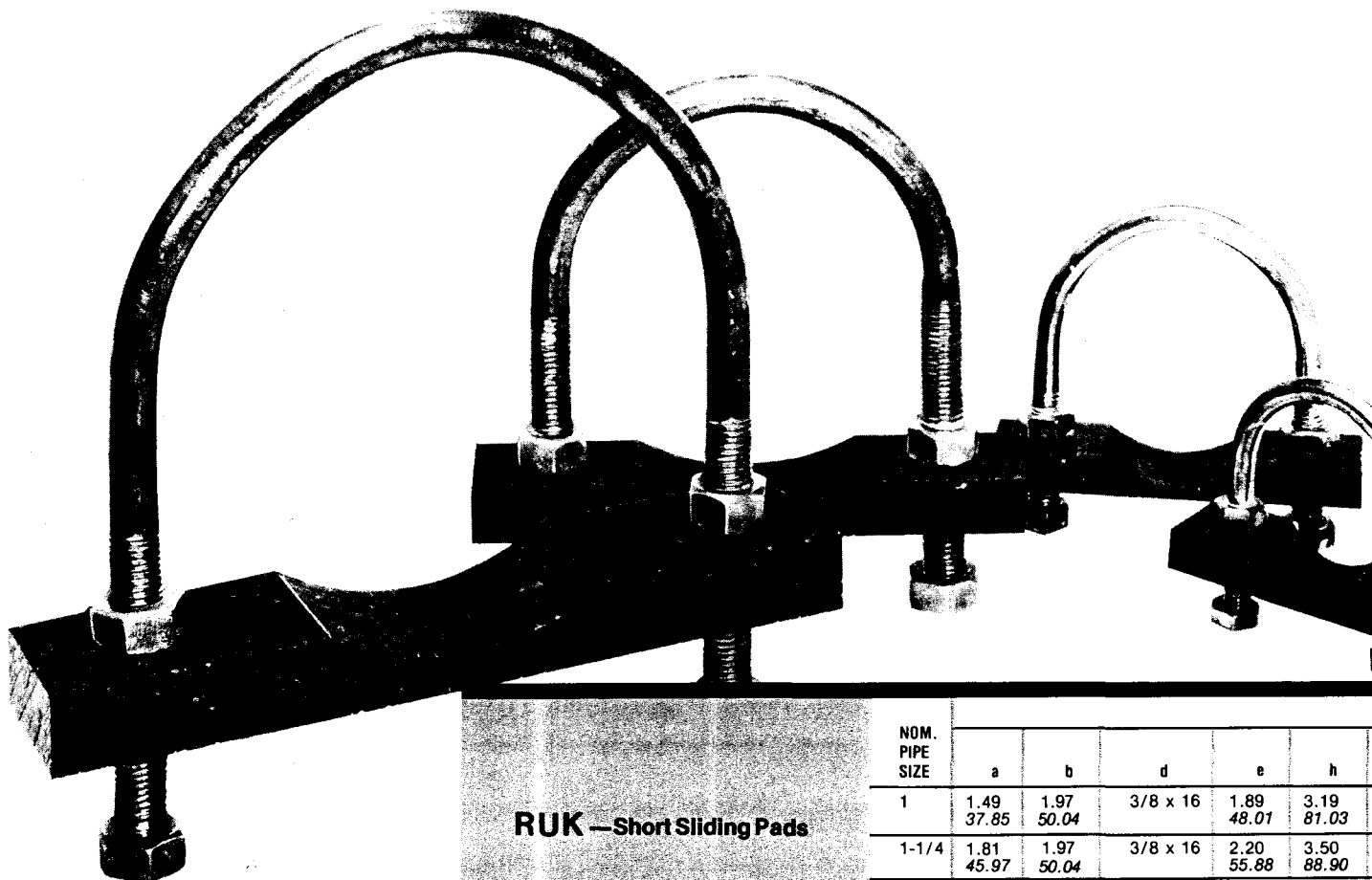
LBU Lightweight Clamps for two lines with different outside diameters.



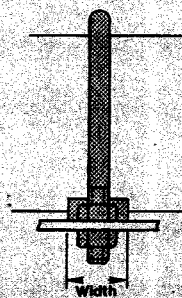
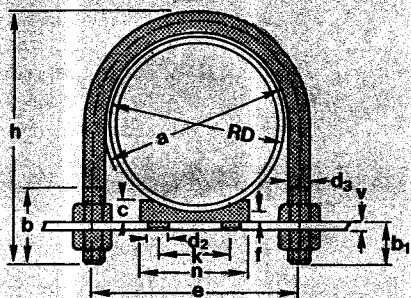
LBG. LIGHTWEIGHT SERIES DIMENSIONS IN INCHES AND MILLIMETERS

CLAMP GROUP	O.D. a	b	c	d	e	f
1	1/8	1.22 30.99	1.22 30.99	.41 10.41	.47 11.94	.71 18.03
	1/4					
	5/16					
2	3/8	1.53 38.86	1.53 38.86	.57 14.48	.63 16.00	.87 22.10
	7/16					
3	1/2	2.08 52.83	2.08 52.83	.89 22.61	.79 20.07	1.18 29.97
	9/16					
	5/8					
4	3/4	2.76 70.10	2.76 70.10	1.18 29.97	.79 20.07	1.49 37.85
	7/8					
	1					

STAUFF U-BOLT SERIES CLAMPS



RUK — Short Sliding Pads



NOM. PIPE SIZE	a	b	d	e	h
1	1.49 37.85	1.97 50.04	3/8 x 16	1.89 48.01	3.19 81.03
1-1/4	1.81 45.97	1.97 50.04	3/8 x 16	2.20 55.88	3.50 88.90
1-1/2	2.05 52.07	2.17 55.12	3/8 x 16	2.44 61.98	3.94 100.08
2	2.52 64.01	2.48 62.99	7/16 x 14	2.99 75.95	4.65 118.11
2-1/2	3.23 82.04	3.03 76.96	7/16 x 14	3.70 93.98	5.31 134.87
3	3.70 93.98	3.23 82.04	7/16 x 14	4.17 105.92	5.98 151.89
4	4.72 119.89	4.13 104.90	5/8 x 11	5.35 135.89	7.48 189.99
5	5.83 148.08	4.13 104.90	5/8 x 11	6.46 164.08	8.54 216.92
6	6.93 176.02	4.13 104.90	5/8 x 11	7.56 192.02	9.72 246.89
8	8.98 228.09	4.92 124.97	3/4 x 10	9.76 247.90	12.24 310.90
10	11.10 281.94	4.92 124.97	3/4 x 10	11.89 302.01	14.33 363.98
12	13.07 331.98	4.92 124.97	3/4 x 10	13.86 352.04	16.46 418.08
14	14.88 377.95	5.71 145.03	7/8 x 9	15.83 402.08	18.70 474.98
16	16.85 427.99	5.71 145.03	7/8 x 9	17.79 451.87	20.71 526.03
20	20.86 529.84	5.71 145.03	7/8 x 9	21.81 553.97	24.68 626.87
22	22.44 569.98	6.89 175.01	1-1/4 x 7	23.62 599.95	27.12 688.85
24	24.49 622.05	6.89 175.01	1-1/4 x 7	25.67 652.02	29.17 740.92
26	26.77 679.96	6.89 175.01	1-1/4 x 7	27.95 709.93	31.30 795.02
28	28.74 730.00	6.89 175.01	1-1/4 x 7	29.92 759.97	33.27 845.06
30	30.90 784.86	6.89 175.01	1-1/4 x 7	32.09 815.09	35.35 897.89

U-Bolt Series Clamps consist of a U-bolt and four nuts. Sizes range from 1 inch to 30 inch O.D. pipe and are available in four types: carbon steel, zinc plated carbon steel, plastic coated or stainless steel.

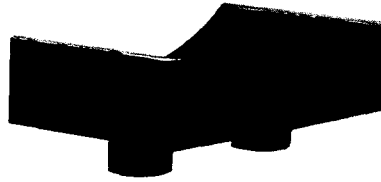
RUK—short sliding pads are available in either polypropylene (PP) or Ultramid (UL).

RUL—long sliding pads are available in polypropylene only. The function of sliding pads is to support the pipe, eliminate metal to metal contact and to provide better longitudinal movement of pipe installations. Sliding pads can also be provided in other materials. The pipe O.D. determines the U-bolt clamp size.

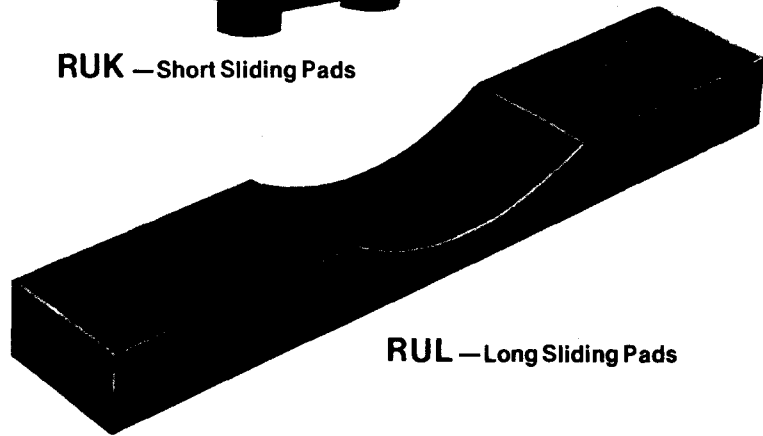
Technical information may be found in Tech. Bulletin.

When ordering Stauff Clamps, refer to price list.

General Applications: Refineries, ship building, general piping applications not subject to severe shock or vibration.



RUK — Short Sliding Pads

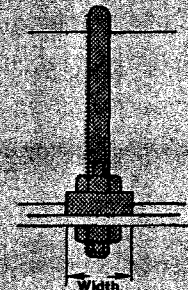
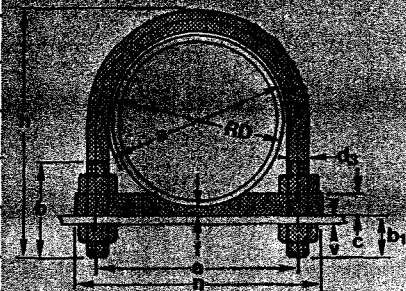


RUL — Long Sliding Pads

U-BOLT DIMENSIONS IN INCHES AND MILLIMETERS

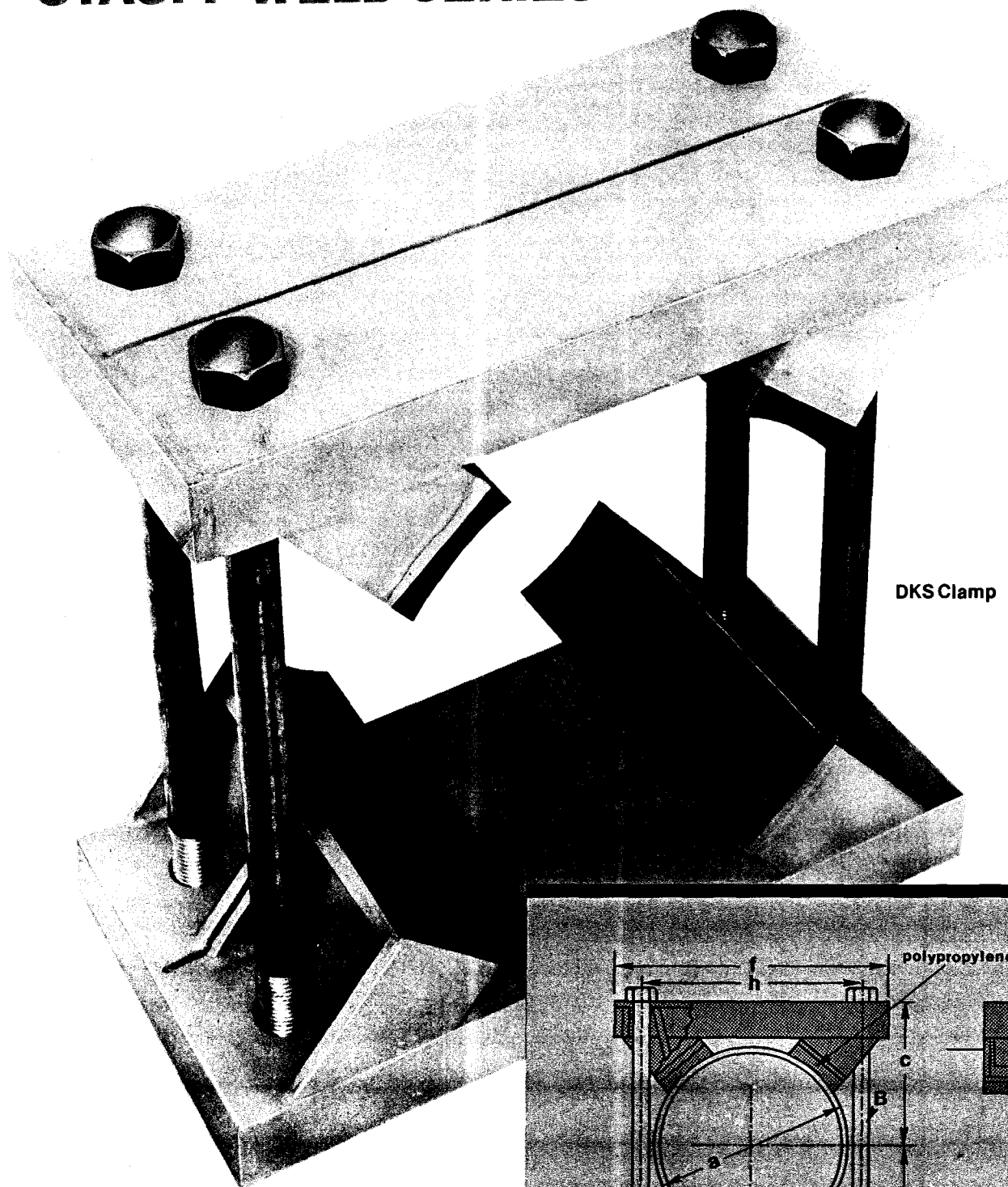
SHORT SLIDING PAD (RUK)									LONG SLIDING PAD (RUL)						
b ₁	v	c	d	f	k	n	WIDTH		b ₁	v	c	f	n	WIDTH	
1.18 29.97	.39 9.91	.31 7.87	.31 7.87	.20 5.08	.99 25.15	.95 24.13	1.38 35.05		1.18 29.97	.39 9.91	.47 11.94	.19 4.83	3.14 79.76	1.18 29.97	
1.18 29.97	.39 9.91	.31 7.87	.31 7.87	.20 5.08	.99 25.15	.95 24.13	1.38 35.05		1.18 29.97	.39 9.91	.47 11.94	.19 4.83	3.54 89.92	1.18 29.97	
1.38 35.05	.59 14.99	.31 7.87	.31 7.87	.20 5.08	.99 25.15	.95 24.13	1.38 35.05		1.38 35.05	.59 14.99	.59 14.99	.19 4.83	3.74 95.00	1.38 35.05	
1.53 38.86	.59 14.99	.39 9.91	.39 9.91	.20 5.08	.99 25.15	1.50 38.10	1.96 49.78		1.53 38.86	.59 14.99	.59 14.99	.19 4.83	4.33 109.98	1.38 35.05	
1.54 39.12	.59 14.99	.39 9.91	.39 9.91	.20 5.08	.99 25.15	1.50 38.10	1.96 49.78		1.53 38.86	.59 14.99	.59 14.99	.19 4.83	5.31 134.87	1.38 35.05	
1.61 40.89	.59 14.99	.55 13.97	.59 14.99	.31 7.87	1.57 39.88	2.75 69.85	2.75 69.85		1.53 38.86	.79 20.07	.39 9.91	5.71 145.03	1.57 39.88		
1.93 49.02	.59 14.99	.55 13.97	.59 14.99	.31 7.87	1.57 39.88	2.75 69.85	2.75 69.85		1.85 46.99	.79 20.07	.39 9.91	7.48 189.99	1.57 39.88		
1.93 49.02	.59 14.99	.55 13.97	.59 14.99	.31 7.87	1.57 39.88	2.75 69.85	2.75 69.85		1.85 46.99	.79 20.07	.39 9.91	8.66 219.96	1.57 39.88		
2.01 51.05	.59 14.99	.91 23.11	.99 25.15	.31 7.87	3.54 89.92	5.51 139.95	2.95 74.93		1.85 46.99	.98 24.89	.47 11.94	11.94 249.94	1.97 50.04		
2.39 58.93	.59 14.99	.91 23.11	.99 25.15	.31 7.87	3.54 89.92	5.51 139.95	2.95 74.93		2.16 54.86	.98 24.89	.47 11.94	12.40 314.96	1.97 50.04		
2.39 58.93	.59 14.99	.91 23.11	.99 25.15	.31 7.87	3.54 89.92	5.51 139.95	2.95 74.93		2.16 54.86	.98 24.89	.47 11.94	14.57 370.08	1.97 50.04		
2.44 61.98	.59 14.99	1.18 29.97	1.18 29.97	.31 7.87	5.90 149.86	8.66 219.96	2.95 74.93		2.16 54.86	.59 14.99	1.18 29.97	16.53 419.86	2.36 59.94		
2.75 69.85	.59 14.99	1.18 29.97	1.18 29.97	.31 7.87	5.90 149.86	8.66 219.96	2.95 74.93		2.48 62.99	.59 14.99	1.18 29.97	18.90 480.06	2.36 59.94		
2.75 69.85	.59 14.99	1.18 29.97	1.18 29.97	.31 7.87	5.90 149.86	8.66 219.96	2.95 74.93		2.48 62.99	.59 14.99	1.18 29.97	21.26 540.00	2.36 59.94		
2.75 69.85	.59 14.99	1.18 29.97	1.18 29.97	.31 7.87	5.90 149.86	8.66 219.96	2.95 74.93		2.48 62.99	.59 14.99	1.18 29.97	25.20 640.08	2.36 59.94		
3.42 86.87	.59 14.99	1.57 39.88	1.18 29.97	.31 7.87	8.66 219.96	11.81 299.97	2.95 74.93		2.95 74.93	.59 14.99	1.57 39.88	27.56 700.02	2.76 70.10		
3.42 86.87	.59 14.99	1.57 39.88	1.18 29.97	.31 7.87	8.66 219.96	11.81 299.97	2.95 74.93		2.95 74.93	.59 14.99	1.57 39.88	29.53 750.06	2.76 70.10		
3.42 86.87	.59 14.99	1.57 39.88	1.18 29.97	.31 7.87	8.66 219.96	11.81 299.97	2.95 74.93		2.95 74.93	.59 14.99	1.57 39.88	31.89 810.01	2.76 70.10		
3.42 86.87	.59 14.99	1.57 39.88	1.18 29.97	.31 7.87	8.66 219.96	11.81 299.97	2.95 74.93		2.95 74.93	.59 14.99	1.57 39.88	34.25 869.95	2.76 70.10		
3.42 86.87	.59 14.99	1.57 39.88	1.18 29.97	.31 7.87	8.66 219.96	11.81 299.97	2.95 74.93		2.95 74.93	.59 14.99	1.57 39.88	35.83 910.08	2.76 70.10		

RUL — Long Sliding Pads

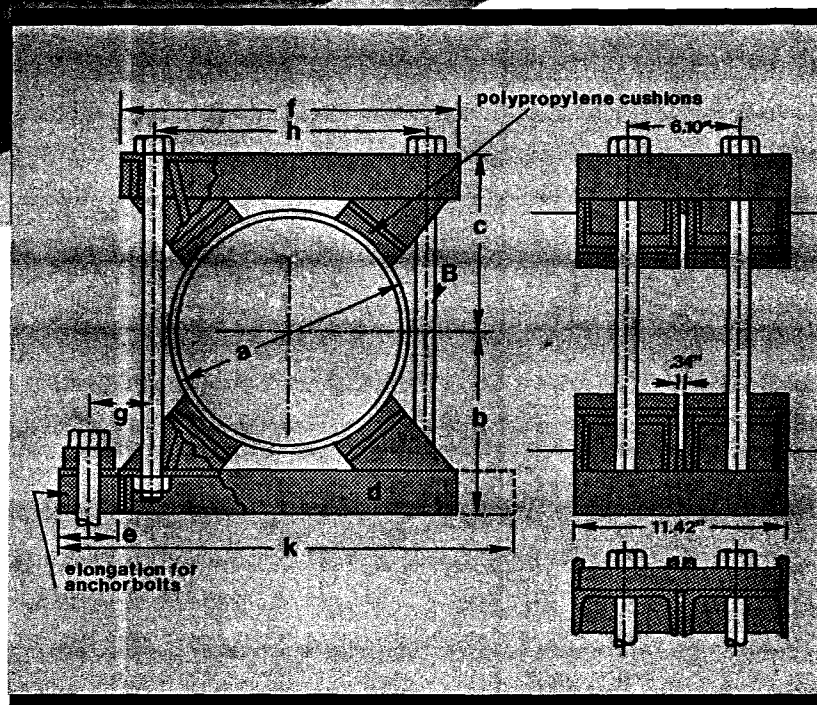


U-BOLT SERIES

STAUFF WELD SERIES CLAMPS



DKS Clamp

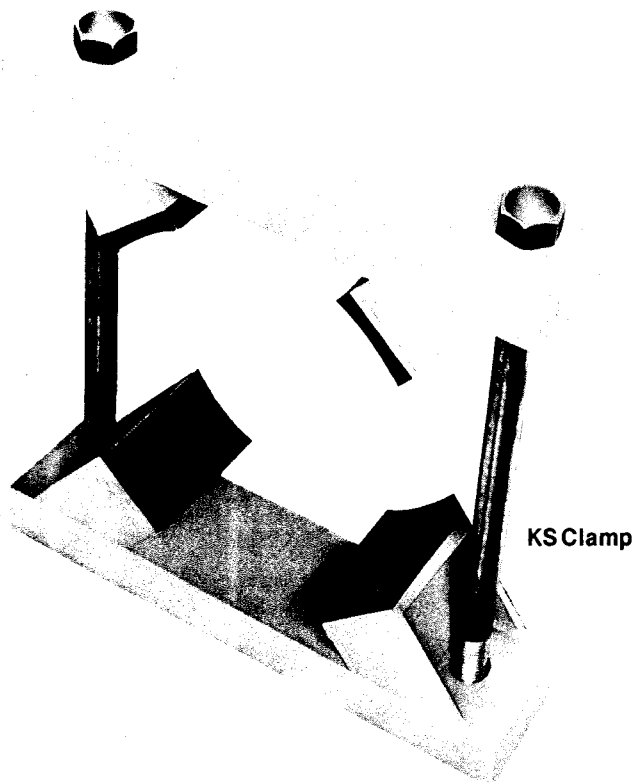


Weld Series Clamps are available in a range of sizes from 8-5/8 inches to 32 inches in two design types. A single clamp (KS) consists of two welded parts held together with two hex head bolts. A double clamp unit (DKS) consists of two welded parts held with four bolts. Polypropylene (PP) cushions absorb shock and vibration and help to reduce noise. Other materials can be substituted upon request. Weld Series Clamps can be welded to the support structure or anchored with nuts and bolts. Pipe O.D. determines the size of clamp needed. Intermediate sizes not listed in the table can be supplied.

Technical information may be found in Tech. Bulletin.

When ordering Stauff Clamps refer to price list.

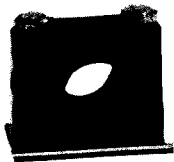
General applications: Heavy machinery, steel mills.



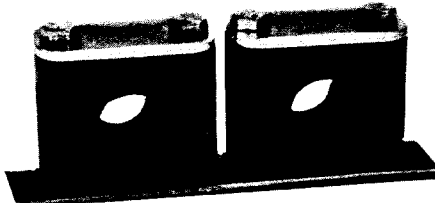
WELD SERIES KS AND DKS DIMENSIONS AND WEIGHTS IN INCHES AND MILLIMETERS - POUNDS AND KILOGRAMS

O.D. INCHES a	ORDER NO.	b	c	U PROFILE d	e	f	g	h	k	HEX. BOLT B	WEIGHT IN LBS. AND KGS.		NO. PLASTIC CUSHIONS
											KS	DKS	
8-5/8 10-3/4	PLEASE INDICATE PIPE O.D.	8.66 219.96	8.66 219.96	5.50 139.70	3.15 80.01	16.53 419.86	3.15 80.01	13 330.20	22.83 579.88	1-1/8 x 16-1/2	66 29.9	137 62.1	4
11 12-3/4		9.50 241.30	9.50 241.30	5.50 139.70	3.15 80.01	18.11 459.99	3.15 80.01	14.50 368.30	24.40 619.76	1-1/8 x 18	68 30.8	141 64.0	4
13 14-1/2		10.20 259.08	10.20 259.08	5.50 139.70	3.15 80.01	20 508.00	3.15 80.01	16.50 419.10	26.37 666.80	1-1/8 x 19-1/2	73 33.1	151 68.5	4
15 16-3/4		11.40 289.56	11.40 289.56	5.50 139.70	3.54 89.92	22.44 569.98	3.15 80.01	18.90 480.06	29.50 749.30	1-1/8 x 22	88 40.0	180 81.0	4
17 19		12 304.80	12 304.80	5.50 139.70	3.54 89.92	24.40 619.76	4 101.60	20.85 529.59	31.50 800.10	1-1/8 x 23-1/4	94 42.64	194 88.1	4
20 21-1/2		14.58 370.33	14.58 370.33	5.50 139.70	3.54 89.92	26.75 679.45	4 101.60	23.25 590.55	38.85 966.79	1-1/8 x 28-1/4	101 45.8	207 94.0	4
22 25		16.14 409.96	16.14 409.96	5.50 139.70	3.54 89.92	30 762.00	4 101.60	26.37 666.80	37 939.80	1-1/8 x 31	110 50.0	224 101.6	4
26 28		17.75 450.85	17.75 450.85	5.50 139.70	3.54 89.92	33.25 844.55	4 101.60	29.75 755.65	40.35 1024.89	1-1/8 x 34-3/4	125 56.7	255 115.7	4
29 31-1/2		19.50 495.30	19.50 495.30	5.50 139.70	3.54 89.92	37 939.80	4 101.60	33.80 850.90	44 1117.6	1-1/8 x 38	141 64.0	266 129.7	4

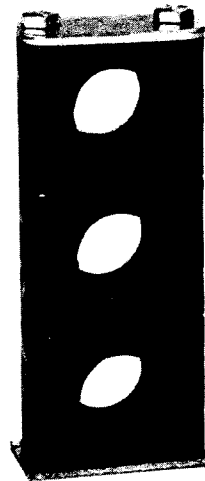
ORDERING EXAMPLES



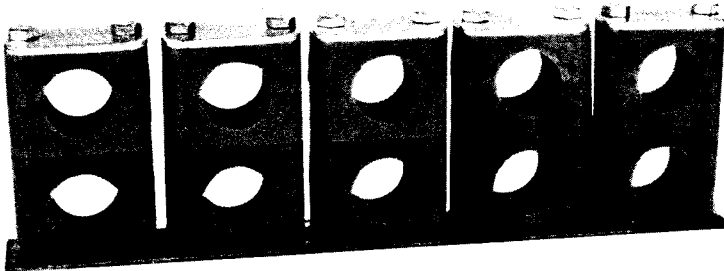
One clamp on Single Welding Plate,
5/8 inch OD Tube.
Material: Polypropylene (PP).
Hex Head Bolts with Inserts.
SP 2160 PP-AS-E



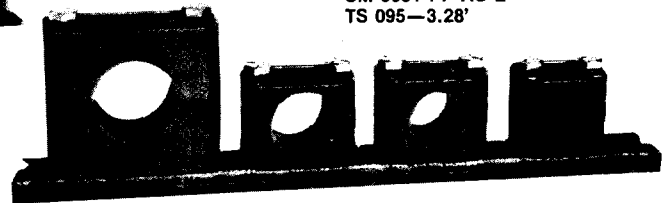
Two clamps on Twin Welding Plate,
1/2 inch Nom. Pipe Size (.840" OD).
Material: Ultramid (UL).
Hex Head Bolts and Cover Plates.
DSPV 3213 UL-DP-AS



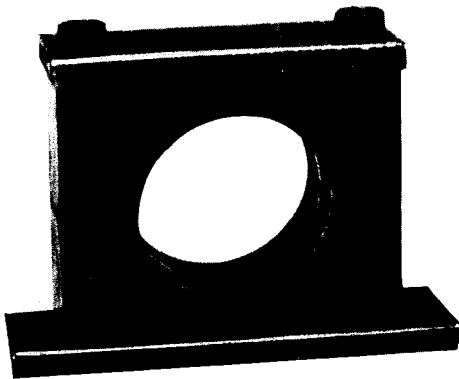
Three clamps stacked
on Single Welding Plate,
1 inch Nom. Pipe Size (1.315" OD).
Material: Polypropylene (PP).
Hex Head Bolts and Cover Plate.
1 x SP 5334 PP-DP-AS
2 x 5334 PP-AF-SI



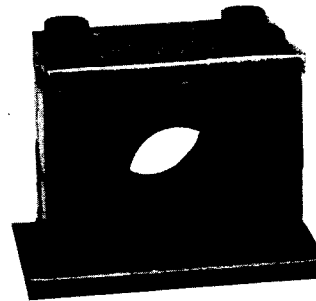
Four clamps mounted on
a rail 3.28 ft. long.
One clamp 1/2 inch OD Tube;
One clamp 7/8 inch OD Tube;
One clamp 1 inch OD Tube;
One clamp 1-1/2 inch OD Tube.
Material: Polypropylene (PP).
Hex Head Bolts with Inserts.
IMPORTANT:
Unequal tube OD's require
ordering clamps separately.
SM 2127 PP-AS-E
SM 3222 PP-AS-E
SM 3254 PP-AS-E
SM 5381 PP-AS-E
TS 095-3.28'



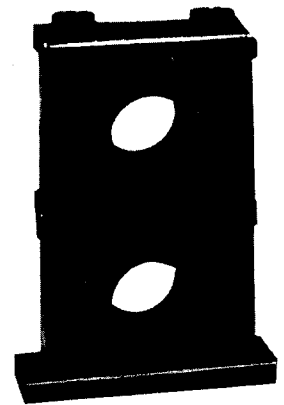
Ten clamps stacked on a Group Welding Plate,
3/4 inch Nom. Pipe Size (1.050" OD).
Material: Polypropylene (PP).
Hex Head Bolts and Cover Plates.
5 x RAP 4266 PP-DP-AS
5 x 4266 PP-AF-SI



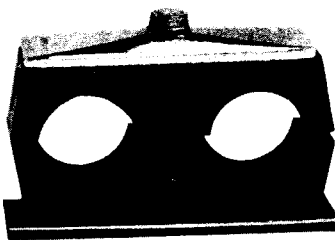
One single clamp Heavy Series (two-bolt
design) 3 inch Nom. Pipe Size (3-1/2" OD).
Material: Polypropylene (PP).
Hex Head Bolts.
SPAL 7889-S-PP-AS



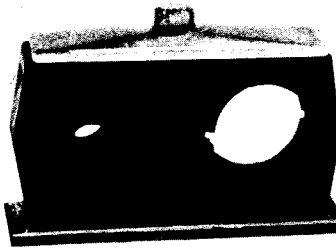
One double clamp Heavy Series (four bolt
design) 1-1/2 inch Nom. Pipe Size (1.900" OD).
Material: Ultramid (UL).
Hex Head Bolts.
SPAS 6483-S-UL-AS



Two single clamps Heavy Series
(two-bolt design) stacked on a single
welding plate, 1 inch OD Tube.
Material: Polypropylene (PP).
Hex Head Bolts.
1 x SPAL 4254-S-PP-AS
1 x 4254-S-PP-AF-SIP



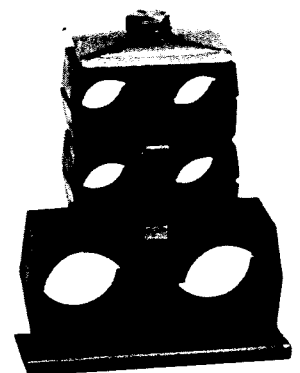
One Twin Clamp, 1 inch OD Tube,
Material: Polypropylene (PP).
Coverplate, Hex Head Bolt.
SPDS 3254/254 PP-GD-AS



One Twin Clamp, 3/4 inch Nom. Pipe Size
(1.050" OD) and 1/8 inch Nom. Pipe Size
(.405" OD).
Material: Polypropylene (PP).
Coverplate, Hex Head Bolt.
SPDS 4266/102 PP-GD-AS

Three Twin Clamps stacked.
One clamp:
1-1/4 x 1-1/4 inch OD Tube
Two clamps:
3/4 x 3/4 inch OD Tube

Material: Polypropylene (PP).
Coverplate, Hex Head Bolt.
1 x SPDS 5318/318 PP-AF-SI
1 x SPDS 3190/190 PP-AF-SI
1 x SPDS 3190/190 PP-GD-AS



AUSTRALIA

Stauff-Corporation Pty. Ltd.
9 Berkeley Avenue
Unanderra, N.S.W. 2526
Tel. (042) 711877
Telex: 29120

AUSTRIA

Kurt Gottwald
Rasumofskygasse 1
A-1030 Wien
Tel. 738213

BELGIUM

Petrometalic Belgium
E.van Cauwenberghstr. 67 - 71
B-1020 Brussel
Tel. (02) 427 60 99
Telex: 26516

DENMARK

Sperry Vickers A/S
Ostmarken, 6
DK-2860 Soborg
Tel. (01) 691422
Telex: 15659

FINLAND

Auramo Oy
Box 668
SF-00101 Helsinki 10
Tel. 821022
Telex: 121125

Oy Tecalemit AB
P.O. Box 134
SF-00151 Helsinki 15
Tel. 13655
Telex: 12 1174

FRANCE

Petrometalic S.A.
106 Av. du Cateau
F-59405 Cambrai
Tel. 83 8996
Telex: 110131

GERMANY

Walter Stauffenberg KG
Neustadtstr. 27
D-5980 Werdohl
Tel. 02392/1531-33
Telex: 826463

GREAT BRITAIN

Stauff Ltd.
340 Coleford Road
Darnall/Sheffield S 9 5 PH
Tel. (0742) 447186
Telex: 547576

HOLLAND

Kracht Hydrauliek N.V.
Industriestraat 9
NL-3368 Numansdorp
Tel. 2033
Telex: 24762

van Rietschoten & Houwens
Sluisjesdijk 155
NL- 3022 Rotterdam
Tel. 298811
Telex: 21681

ICELAND

Atlas H.F.
P.O.Box 493
Reykjavik
Tel. 26755
Telex: 2150

ITALY

Serralunga Baldi s.r.l.
Via Fezzan 9
I-20146 Milano
Tel. 4225944

Rastelli Italiana s.r.l.
I-27019 Vellanterio (PV)
Tel. 967257/967067
Telex: 35667

JAPAN

Ohtsuka Co.Ltd.
7-19, 1 Chome
Minami-Shinagawa
Shinagawa-Ku
Tokyo
Tel. 472-1201
Telex: 242 3847

LEBANON

Elba Middle East S.A.L.
P.O.Box 6100
Beirut
Tel. 264430-263367
Telex: 20955

LUXEMBURG

Ch.Friederich
24 Rue du 10 Septembre
Esch-Sur-Alzette
Tel. 52808
Telex: 1236

NIGERIA

IKE - Oluwa Trading Company
P.O.Box 1537
Lagos
Tel. 23242

NORWAY

Uni-Cardan Norge A.S.
Postboks 194
N-1401 Ski
Telefon: 872460
Telex: 16879

PORTUGAL

Custavo Cudell LDA
P.O.Box 248
Porto
Tel. 37966
Telex: 22723

SOUTH AFRICA

Corex Pty Ltd.
P.O.Box 204
Paardeneiland Cape
Tel. 51-5804/51-4413
Telex: 57 6552

SPAIN

Edificio Cedisa
Av.da del. Jordan s/n
Barcelona 16
Tel. 2974500
Telex: 56125

SWEDEN

Svenska-Stauff AB
Box 65
S-64200 Flen
Tel. 12060
Telex: 64100

SWITZERLAND

Tecalto AG
Rautistr. 58
CH- 8048 Zurich
Tel. 5225500
Telex: 54455

**STAUFF CORPORATION**

21-23 Industrial Park
Waldwick New Jersey 07463
Tel. 201/444-7800
Telex: 00230/134465