



rotobec

OWNER'S MANUAL

R 150001-1

5X02-001

■ **HEAD OFFICE - ROTOBEC INC.**

200 rue Industrielle, Ste-Justine, QC, G0R 1Y0

Office, Factory
Sales, Administration
Purchasing, Engineering
Parts:

TEL.: (418) 383-3002
FAX: (418) 383-5334
FAX: (418) 383-5341
FAX: (418) 383-5320

■ **ROTOBEC CANADA WEST INC.**

13890 Oyama Road, Oyama, BC, V4V 2B2

TEL.: (250) 548-0041

FAX: (250) 548-0043

■ **ROTOBEC USA INC.**

162 Rotobec Drive, Littleton, NH 03561

TEL.: (603) 444-2103

FAX: (603) 444-0327

■ **ROTOBEC-WEST, USA INC.**

TEL.: (503) 288-3115

INTRODUCTION

Before using this manual, we recommend you double check that the model number and serial number on your grapple and/or rotation assembly are identical to the numbers listed below.

This parts and maintenance manual was prepared to help you get acquainted with your new Rotobec unit. We strongly recommend that you look through your manual and keep it with your machine for future reference.

It is designed to:

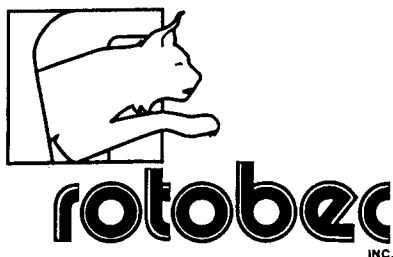
- Provide necessary information for installation, maintenance and instructions for ordering replacement parts.
- Assist in troubleshooting.
- Provide warranty information and registration certificate.

Your Rotobec unit was built to maintain a high degree of efficiency at all times. In order to preserve this quality, ***it is important to establish a good maintenance program, (see the maintenance section of this manual)***. Ask your dealer or your representative to explain the operating functions and the maintenance procedures.

PARTS ORDERING INSTRUCTIONS

When ordering parts, mention part name and part number. Always specify your model number, serial number and give specific shipping instructions.

Please note that the accuracy of the illustrations has been set aside in order to group different models on the same page.



INSTALLATION INSTRUCTIONS ON THE LOADER
FOR ROTOBEC ROTATION SYSTEMS
140000, 190000 AND 240000 MODELS

To assure proper protection of your rotation system, the hydraulic pressure and the oil flow *from the control valve going towards the cushion valve* should be adjusted as listed in the chart below:

Rotation model	Cushion valve cartridge adjustment	Maximum supply pressure	Maximum recommended flow
140000	1700 psi	2500 psi	30 GPM
190000	2100 psi	2500 psi	30 GPM
240000	2700 psi	2500 psi	40 GPM

On the other hand, *from the rotation system going towards the control valve*, the oil flow should be as free as possible.

The motor cases of these rotation mechanisms must be drained. The drain line pressure must not exceed 100 psi. It is recommended to have a drain line directly to the tank (see illustration on next page).

The make-up port on the cushion valve (see next page for location) must be connected to a return line whose pressure is 60 to 200 psi above the one in the drain line.

The maximum recommended flow corresponds to a rotation speed of 12 RPM.

If your loader fits all of the above requirements, a ROTOBEC rotation system can be installed without any modification. However if this is not the case, it is usually easy to remedy. (see next page for instructions)



INSTRUCTIONS D'INSTALLATION SUR LA CHARGEUSE POUR MECANISMES ROTATIFS ROTOBEC MODÈLES 140000, 190000 ET 240000

Exemple I: Pression trop élevée:

Certaines chargeuses sont munies de commandes avec soupapes de régulation de pression (relief valves). Il est alors facile de réduire la pression par un simple ajustement de ces soupapes.

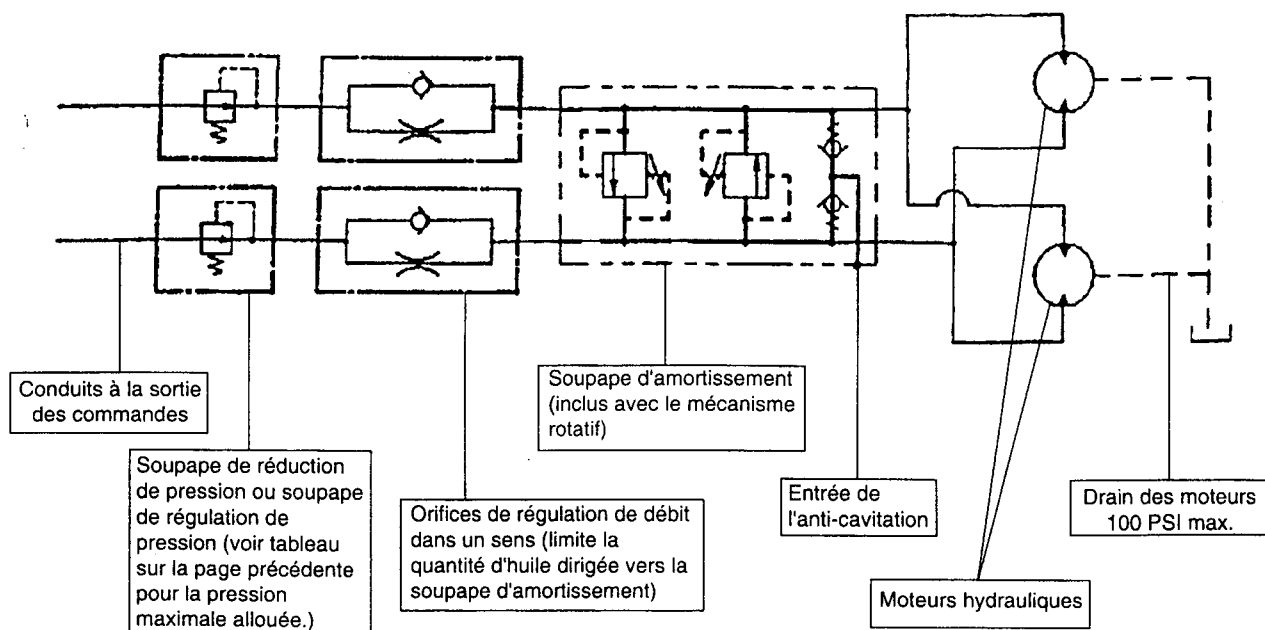
Pour celles qui n'en sont pas munies, il est possible d'en ajouter à la sortie des commandes. Des soupapes de réduction de pression ou les soupapes WJL de GRESEN peuvent résoudre le problème dans la majorité des cas (*voir le tableau sur la page précédente pour la pression maximale allouée*).

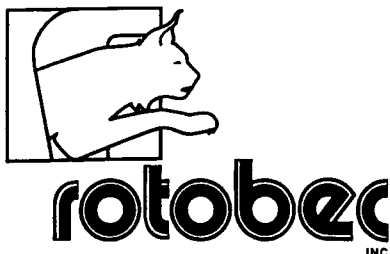
Exemple II: Débit trop élevé:

On peut réduire le débit allant des commandes vers la soupape d'amortissement en ajoutant des orifices de régulation de débit dans un sens "one way valves". Ils doivent être installés tel que montrés ci-dessous. Les orifices LT50 de GRESEN ou des équivalents sont recommandés. Le diamètre de perçage est donné dans la remarque ci-dessous.

REMARQUE:

- Pour modèle 140000, percez 5/32".
- Pour modèle 190000, percez 5/32".
- Pour modèle 240000, percez 3/16".





MAINTENANCE INSTRUCTIONS FOR ROTOBEC ROTATION SYSTEMS 140000, 190000 AND 240000 MODELS

Periodic internal and external greasing of the slewing ring of your rotation system is important.

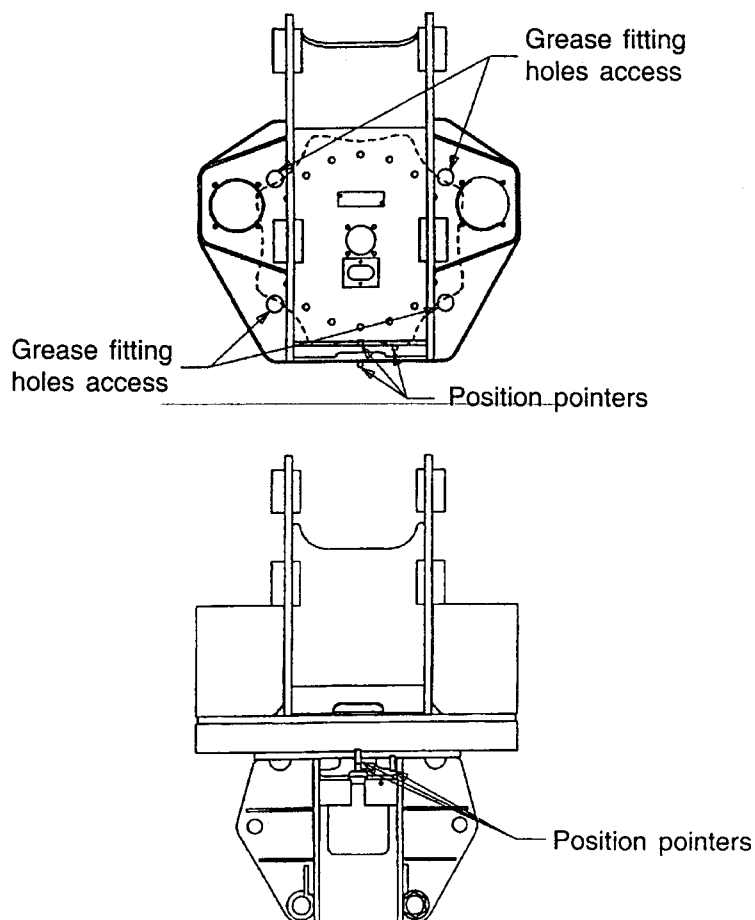
Internal: Line up the position pointers, making it possible to grease the slewing ring rollers through the holes designed for this procedure. Apply **three shots** of a pressure gun in each of the two grease fittings through the opening. Repeat after every 50 hours of operation (see drawing below).

Type of lubricant: Extreme pressure grease such as Shell Albida LC E.P.2 (lithium complex grease) or equivalent.

External: Spray-grease the ring gear teeth after each 12 hours of operation.

Type of lubricant: Use Shell open gear lubricant (spray can) or equivalent.

POSITIONING THE POINTERS TO GREASE THE FITTINGS





787-0004 (BH1)

Note: Use a torque wrench. Lubricated torque values in ft-lb. LT = Loctite

TITLE ROTATION: R-150001-1

SECTION H

UPDATED 06/2001

OFFICE

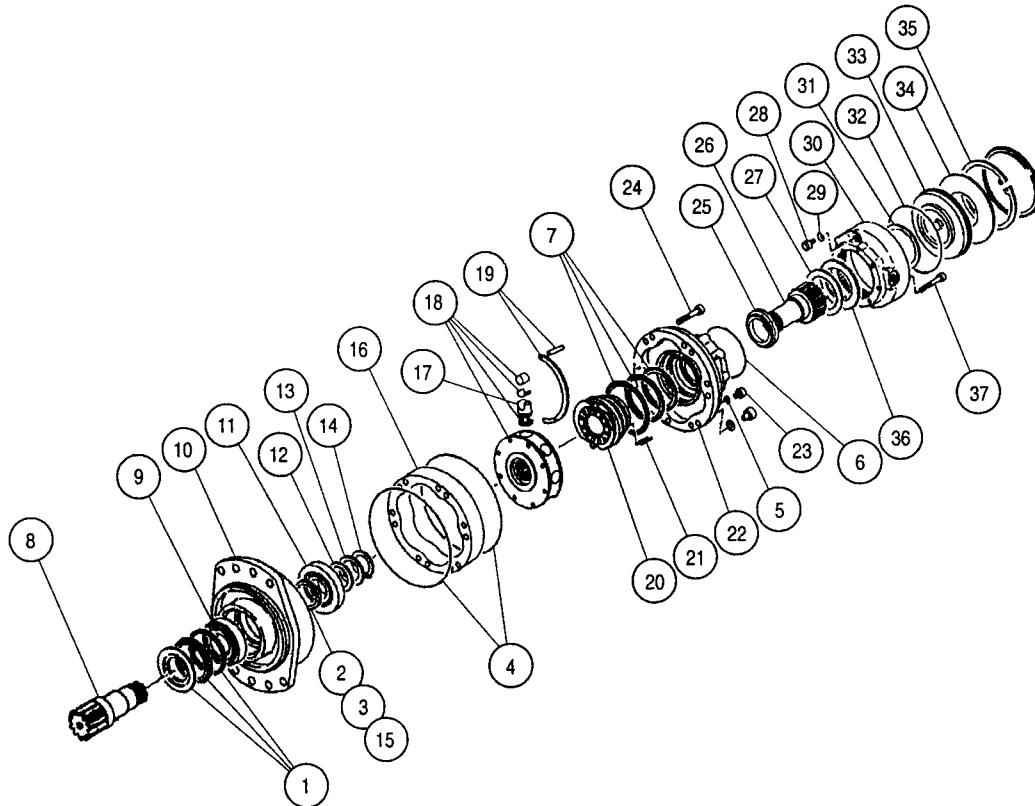
R-156

PAGE 1 OF 1

PAGE 58



rotobec
INC.



TITLE POCLAIN, HYDRAULIC MOTOR

SECTION I

UPDATED 06/2001

OFFICE USE M-11 (K3-F1)

PAGE 1 of 2

PAGE 12

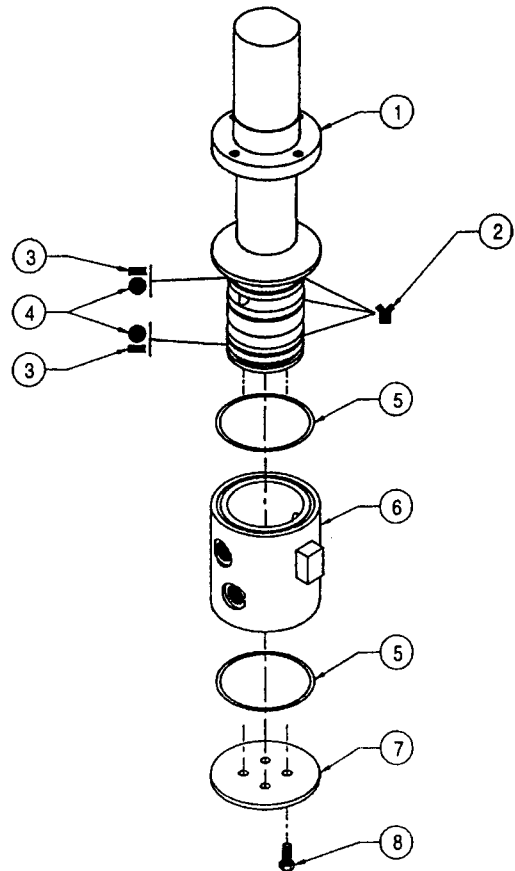
MODEL / QUANTITY

728-0060

ITEM	A	B	C	D	E	F	NUMBER	DESCRIPTION
-	1						728-0251	MOTOR, all items included
-	1						124-7045	MOTOR SEAL KIT, items 1 to 6 included
-	1						124-0008	SHAFT SEAL KIT, items 2, 3 included
-	1						124-7181	COMPLETE BRAKE KIT, items 27 to 37 included
	1						124-0021	BRAKE KIT, items 27, 31, 36 included
	1						528-0202	BRAKE SPACER (not illustrated)
1	1						-----	SEAL
2	1						-----	QUAD-X SEAL
3	1						-----	O-RING
4	2						-----	O-RING
5	2						-----	SEAL
6	1						-----	O-RING
7	1						124-7167	SWIVEL JOINT SEAL KIT
8	1						724-0088	SHAFT
9	1						124-7173	TAPERED ROLLER BEARING
10	1						124-7171	BEARING HOUSING
11	1						124-7174	TAPERED ROLLER BEARING
12	1						124-7175	SHIMS
13	1						124-7176	SUPPORT RING
14	1						124-7177	RETAINING RING
15	1						528-0245	SEAL CARRIER
16	1						124-7195	CAM 46 po. ³ , item 4 included
17							124-7155	PISTON CL,0
							124-7156	PISTON CL,1
18	1						124-7154	CYLINDER BLOCK, items 17, 19 included
19	1						124-7157	REPAIR KIT
20	1						124-7166	SWIVEL JOINT SHAFT
21	8						124-7168	SPRING
22	1						124-7180	SWIVEL JOINT HOUSING
23	2						124-7164	BOLT
24	16						124-7162	BOLT
25	1						124-7046	SEAL
26	1						124-7191	SHAFT
27	4						-----	INNER DISK
28	2						124-7192	BOLT
29	2						124-7193	SEAL
30	1						124-7182	BRAKE HOUSING
31	1						124-7186	SHIMS
32	1						124-7187	O-RING
33	1						124-7188	BRAKE PISTON
34	1						124-7189	SPRING WASHER
35	1						124-7190	RETAINING RING
36	5						-----	OUTER DISK
37	8						124-7183	BOLT
TITLE POCLAIN, HYDRAULIC MOTOR								SECTION I
UPDATED 06/2001		OFFICE USE		M-11 (K3-F1)			PAGE 2 of 2	PAGE 12



rotobec
INC.



MODEL / QUANTITY					
712-1631					
712-0019					
712-1711					

ITEM	A	B	C	D	E	F	NUMBER	DESCRIPTION
1	1	-	1				512-1632	SHAFT
	-	1	-				512-0028	
2	4	4	4				034-1549	U-CUP
3	2	2	2				044-1963	BACK-UP-RING
4	2	2	2				041-1795	O-RING
5	2	2	2				044-1971	BACK-UP-RING
6	1	1	-				712-6348	TUBING
	-	-	1				712-8853	
7	1	1	1				512-5758	END PLATE
8	4	4	4				008-0217	CAP SCREW
*	1	1	1				097-3007	SEAL KIT, items 2 to 5 incl.

TITLE HYDRAULIC COLLECTOR

SECTION J

UPDATED 11/97

OFFICE USE

COL-103

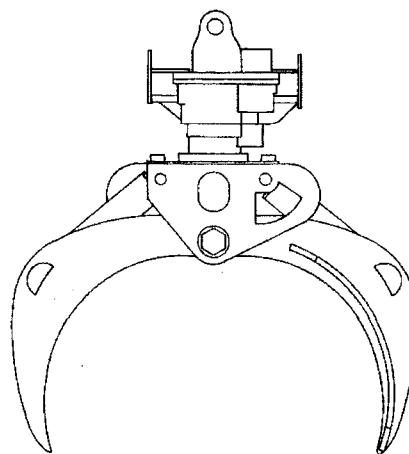
PAGE 1 of 1

PAGE 3

WELCOME TO ROTOBEC . . .

Rotobec specializes in designing and manufacturing continuous rotation attachments. Since 1975, we have focussed our ressources on improving wood handling, thus significantly increasing the productivity of many operations.

With this valuable experience in forestry equipment and constant concern for the operator, we extend the application of our concepts to other sectors of the industry. We now serve the industrial, construction, recycling and general handling businesses.



Our people visit end users, being attentive to their comments. This continuous feedback information is then considered when improving existing products. We frequently visit operations to keep us up-to-date. This guides the development of new products, meeting the demands of the changing market.

Our priority is to offer you a selection of attachments adapted to your job and your knuckleboom loader or excavator.

Your equipment dealer and the Rotobec organization thank you for choosing us. We feel confident that you will be delighted with your new unit for the coming years, and we would appreciate receiving your comments.

NOTE:

The specifications and descriptions contained in this manual were accurate at the time it was approved for printing. Since improvement is a constant goal at Rotobec, we reserve the right to make changes at any time without notice and without incurring any obligation.



■ **HEAD OFFICE - ROTOBEC INC.**
200 rue Industrielle, Ste-Justine, QC, G0R 1Y0
Office, Factory
Sales, Administration
Purchasing, Engineering
Parts:
TEL.: (418) 383-3002
FAX: (418) 383-5334
FAX: (418) 383-5341
FAX: (418) 383-5320

■ **ROTOBEC CANADA WEST INC.**
13890 Oyama Road, Oyama, BC, V4V 2B2
TEL.: (250) 548-0041
FAX: (250) 548-0043

■ **ROTOBEC USA INC.**
162 Rotobec Drive, Littleton, NH 03561
TEL.: (603) 444-2103
FAX: (603) 444-0327

■ **ROTOBEC-WEST, USA INC.**
TEL.: (503) 288-3115

Keep this portion for your records and *return bottom portion*
to be eligible for warranty conditions specified on reverse side.

Owner's name: _____
Dealer's name: _____
Address: _____
Date of purchase: Year _____ Month _____ Day _____
Model no.: _____ Serial no.: _____

Detach here

WARRANTY REGISTRATION CERTIFICATE

Return this portion of card to register purchase

Dealer's name: _____
Address: _____
City: _____ State: _____
Postal or Zip code: _____ Phone: _____
Date of purchase: Year _____ Month _____ Day _____
Model no.: _____ Serial no.: _____
Installed on machine: Make: _____
Model no.: _____ Serial no.: _____
Main use of products: Loading ☐ Unloading ☐ Stacking ☐ Pond ☐
Other: Please specify: _____
Owner's name and address: _____

WARRANTY CERTIFICATE

Starting on the installation date, Rotobec Inc. warrants the structure of this equipment **and its hydraulic components** for one year or 2000 hours, whichever occurs first.

This warranty covers defects for any reason other than abuse, normal wear, unauthorized modifications, operation above the recommended pressure, insufficient lubrication, or any other form of negligence or carelessness in maintenance. All installations not respecting the manufacturer's recommended flows and pressures need to be approved by Rotobec to validate this warranty. It also covers the cost of repair and in certain cases, replacement of defective parts including cost of labor, at rates determined by Rotobec Inc. It does not cover the cost of shipping or returning defective parts, transportation charges for repair or verification of such equipment, labor in diagnosis of a breakdown, time required to dismount the unit, fluid leakage or any other problem whatsoever.

All alterations or transformations will void this warranty if not previously approved by Rotobec Inc. All defective parts replaced under this warranty remain the property of Rotobec Inc. and must be returned, prepaid, for inspection as soon as possible, to the point of purchase. A claim must be submitted, adequately documented, on a claim form supplied by Rotobec Inc.

Rotobec Inc. assumes no liability for injury, loss, damage or expense directly or indirectly resulting from use of this product, from negligence or from defects in design, material or workmanship.

These warranty conditions supersede and are in lieu of all previously stated conditions. No dealer or agent is authorized to change, modify or extend the conditions of this warranty.

The above conditions only apply if the warranty registration card is returned.

FROM:



**162 Rotobec Drive
Littleton,
New Hampshire
03561**