

**OPERATION
AND
MAINTENANCE
MANUAL**

UNIT TYPE AIR COMPRESSORS

SERIES 20 THROUGH 80 — SINGLE STAGE

SERIES 100 THROUGH 900 — TWO STAGE

SERIES 440A THROUGH 990A — TWO STAGE

AIR COMPRESSORS

LeROI

DRESSER

**LeRoi Division,
Dresser Industries, Inc.
Sidney, Ohio 45365**

WARRANTY

RECIPROCATING UNIT AIR COMPRESSORS

WARRANTY AND LIMITATION OF REMEDY AND LIABILITY

- A. Seller warrants only that its products, when shipped, and its work, when performed, will meet all applicable specifications, and other specific product and work requirements (including those of performance), if any, of this agreement and will be free from defects in material and workmanship. All claims under this warranty must be made in writing immediately upon discovery and, in any event, within the following times:

Reciprocating unit air compressors of Seller's manufacture — eighteen (18) months from date of shipment to Buyer, or one (1) year from date of initial operation, whichever occurs first. Reciprocating unit air compressors include, but are not limited to:

- Two stage compressors, electric motor and engine driven
- Two stage basic compressors (pumps only)
- Single stage compressors, electric motor driven
- Single stage basic compressors (pumps only)
- Air receivers for reciprocating unit air compressors
- Accessories and parts for any of the above

The foregoing warranty applies only to products manufactured by the Seller. It does not include components or parts purchased by the Seller from other suppliers, and as to the latter, the warranties of the suppliers of the components or parts shall be applicable.

Defective and nonconforming items must be held for Seller's inspection and returned to the original f.o.b. point upon request. THE FOREGOING IS EXPRESSLY IN LIEU OF ALL OTHER WARRANTIES WHATSOEVER, EXPRESS, IMPLIED AND STATUTORY, INCLUDING, WITHOUT LIMITATION, THE IMPLIED WARRANTIES OF MERCHANTABILITY AND FITNESS.

- B. Upon Buyer's submission of a claim as provided above and its substantiation, Seller shall at its option either (i) repair or replace its product or work at the original f.o.b. point or (ii) refund an equitable portion of the purchase price.
- C. THE FOREGOING IS SELLER'S ONLY OBLIGATION AND BUYER'S EXCLUSIVE REMEDY FOR BREACH OF WARRANTY AND EXCEPT FOR GROSS NEGLIGENCE, WILLFUL MISCONDUCT AND REMEDIES PERMITTED UNDER THE PERFORMANCE, INSPECTION AND ACCEPTANCE AND THE PATENTS CLAUSES HEREOF, THE FOREGOING IS BUYER'S EXCLUSIVE REMEDY AGAINST SELLER FOR ALL CLAIMS ARISING HEREUNDER OR RELATING HERETO WHETHER SUCH CLAIMS ARE BASED ON BREACH OF CONTRACT, TORT (INCLUDING NEGLIGENCE AND STRICT LIABILITY) OR OTHER THEORIES. BUYER'S FAILURE TO SUBMIT A CLAIM AS PROVIDED ABOVE SHALL SPECIFICALLY WAIVE ALL CLAIMS FOR DAMAGES OR OTHER RELIEF, INCLUDING BUT NOT LIMITED TO CLAIMS BASED ON LATENT DEFECTS. IN NO EVENT SHALL BUYER BE ENTITLED TO INCIDENTAL OR CONSEQUENTIAL DAMAGES. ANY ACTION BY BUYER ARISING HEREUNDER OR RELATING HERETO, WHETHER BASED ON BREACH OF CONTRACT, TORT (INCLUDING NEGLIGENCE AND STRICT LIABILITY) OR OTHER THEORIES, MUST BE COMMENCED WITHIN ONE (1) YEAR AFTER THE CAUSE OF ACTION ACCRUES OR IT SHALL BE BARRED.

Le ROI

DRESSER

LeROI DIVISION, DRESSER INDUSTRIES, INC., SIDNEY, OHIO 45365

WARNING

**DO NOT OPERATE THESE COMPRESSORS
AT SPEEDS BELOW 400 R.P.M.**

WHEN INSTALLING A COMPRESSOR THAT IS TO BE POWERED BY AN ELECTRIC MOTOR, BE SURE THAT ALL WIRING IS MADE BY A LICENSED ELECTRICIAN AND THAT THE INSTALLATION MEETS ALL APPLICABLE CODES INCLUDING THOSE OF LOCAL ORIGIN.

WHEN A COMPRESSOR IS TO BE POWERED BY AN ENGINE OR POWER TAKE-OFF DEVICE, BE SURE THAT INSTALLATION IS MADE BY A HIGHLY QUALIFIED MECHANIC AND THAT ALL SAFETY CODES ARE MET IN THE INSTALLATION.

INSTALLATION**1. INSTALLATION**

When installing series 100-900 and 20-80 air compressors on existing installations as replacement compressors or on new installations, either bed-plate or receiver mounted, air connections must be made as shown in figures 1 and 2.

Figure 1 is for start-stop operation only. Note the orifice located in the bottom port of the air control valve.

Figure 2 is for load-unload (continuous run) or dual (combination start-stop or load-unload) operation.

Connections must be made as shown to insure proper operation of the air control valve.

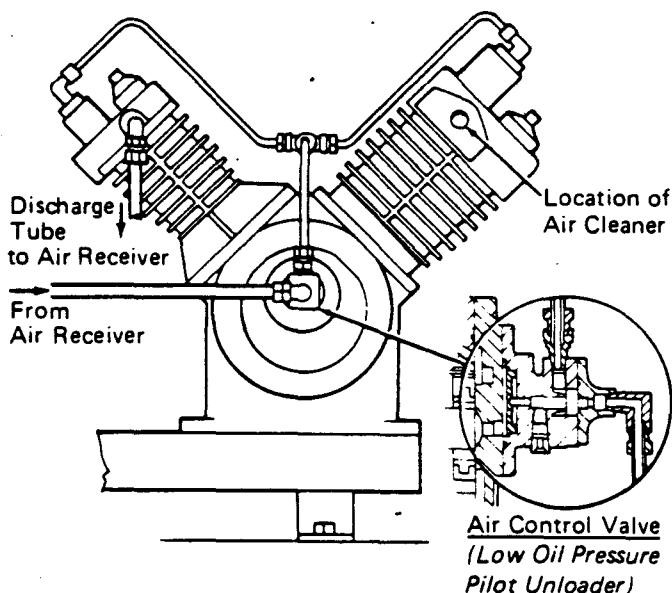
**START-STOP**

Figure 1

2. SAFETY

The air control valve is a safety device which prevents the compressor from pumping to rated pressure in the event the compressor oil pump does not provide adequate lubricating oil pressure.

CAUTION

MAKE CERTAIN THE AIR RECEIVER OR STORAGE TANK WHICH IS CONNECTED TO THE COMPRESSOR HAS A SAFETY VALVE, OF ADEQUATE SIZE, CORRECTLY INSTALLED.

MANUALLY OPERATE THE SAFETY VALVE TO INSURE PROPER OPERATION.

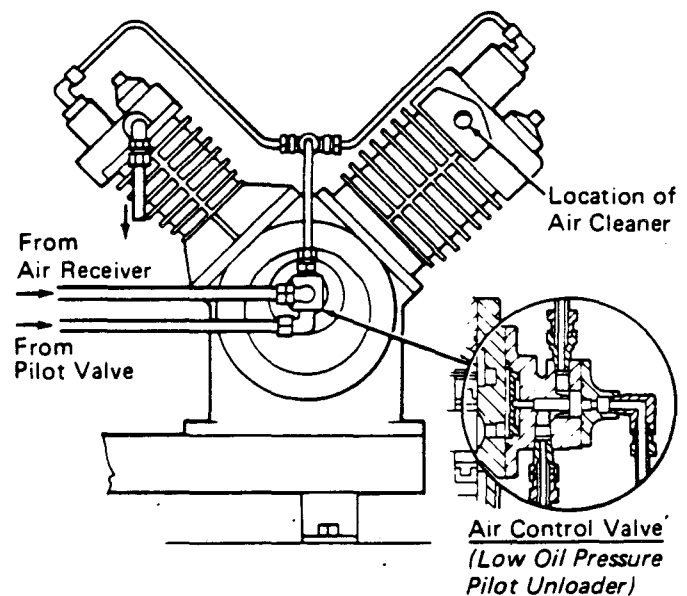
**LOAD-UNLOAD OR DUAL CONTROL**

Figure 2

OPERATION

1. Lubrication

Prior to initial operation, fill the crankcase with a single viscosity, non-detergent super refined oil with rust and oxidation inhibitor. Oil should be either a naphthenic base or a specially compounded type to minimize carbon formation and to produce carbon residue of a soft, fluffy nature. Oils having animal fat compounding are NOT recommended.

Above 32°F SAE 20

0°F to 32°F SAE 10W

Below 0°F Auxiliary crankcase oil heaters are recommended

NOTE: For cold weather operation the lubricating oil should have a pour point of 20°F below the coldest expected operating temperature.

CAUTION: Do not use detergent oils.

SERIES	CAPACITY
20-100-200	7/8 qt.
40-300-400	1-1/8 qt.
60-500-600	2-1/2 qt.
80-700-800	4-1/2 qt.
900	4-1/2 qt.

2. Starting

a. Perform all scheduled preventive maintenance services as specified.

b. If a shutoff valve is used in the compressor-to-receiver discharge line, open the valve.

CAUTION: (SHUTOFF VALVES ARE NOT TO BE INSTALLED IN THIS LINE UNLESS A SAFETY VALVE IS LOCATED BETWEEN IT AND THE COMPRESSOR.)

3. Operation

As the compressor starts, check the rotation of the unit. Normal rotation is clockwise, viewing the compressor from the oil pump end. A rotation arrow, is placed on the oil pump cover at the factory. Should the rotation be incorrect, disengage the power supply and check the motor wiring.

After the compressor is started, it will operate automatically with any of the three types of controls.

NOTE: The compressor can be operated with "reverse rotation" by changing the unit as outlined in paragraph 6.

4. Stopping

a. Disconnect the power supply.

b. Open the air valve.

PREVENTIVE MAINTENANCE

The operation of your pneumatic system is dependent on this air compressor. The long trouble free life designed in each compressor will be assured when the few simple procedures listed below are followed.

1. Daily

Prior to initial operation, fill the crankcase with a single viscosity, non-detergent super refined oil with rust and oxidation inhibitor. Oil should be either a naphthenic base or a specially compounded type to minimize carbon formation and to produce carbon residue of a soft, fluffy nature. Oils having animal fat compounding are NOT recommended.

Above 32°F SAE 20

0°F to 32°F SAE 10W

Below 0°F Auxiliary crankcase oil heaters are recommended.

CAUTION: Do not use detergent oils.

NOTE: For cold weather operation the lubricating oil should have a pour point at least 20°F lower than the coldest expected operating temperature.

a. Open draincock located in bottom of reservoir to drain condensate.

b. At end of each day's operation, disconnect power supply.

2. Weekly

With Power Supply Disengaged

a. Clean complete compressor and reservoir. Clean intercooler fins with compressed air.

NOTE

Series 700, 800, and 900

Proper dirt removal or cleanliness at flywheel side of intercooler can be determined with a suitable light source such as a flashlight. Intercoolers on these models are of the horseshoe design and can clog up externally from the fan side yet appear clean from casual inspection.

b. Clean air intake filter in accordance with the filter decal.

c. Check drive belts and adjust if necessary.

3. Monthly or 300 Hours Service

With Power Supply Disengaged

a. Repeat weekly procedures.

b. Change compressor oil. Use as listed in paragraph 1.

c. Check for and correct air and oil leaks.

d. Tighten all hardware.

4. Six Months To One Year

With Power Supply Disengaged

a. Remove, clean and inspect compressor valves.

b. Repack suction valve unloader assemblies.

5. Preventive Maintenance For Heavy Duty Service

NOTE: Heavy duty service is whenever a compressor is operated continuously in excess of eight hours per calendar day.

a. **DAILY.** Check oil level. Add oil to bring up to level mark if indicator shows it to be low. Open drain cock at bottom of reservoir and drain condensate.

b. **WEEKLY.** Check complete compressor and reservoir. Clean out intercooler fins with compressed air. Clean drive belts and adjust if necessary.

c. **EVERY 500 HOURS.** Change crankcase oil.

d. **EVERY 1000 HOURS.** Install complete set of new or rebuilt valves. Repack suction valve unloader assemblies with silicone grease. Replace suction valve unloader "O" rings and felts if necessary.

6. Oil Pump — Reversing Rotation (See Figure 3)

Normal rotation of the oil pump is clockwise when viewing the compressor from the oil pump end. Should "reverse or counterclockwise rotation" be desired, proceed as follows:

a. Disconnect the air receiver tubing, and the unloader tubing.

b. Remove the screws that secure the oil pump cover to the crankcase and remove the cover.

c. Remove the oil pump rotor, vanes, and springs.

d. Remove the oil pump insert from the pin; turn the insert over so the arrow on the other side points counterclockwise; and reinstall insert over the pin.

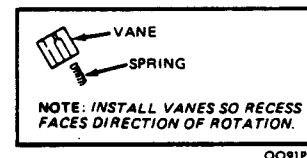
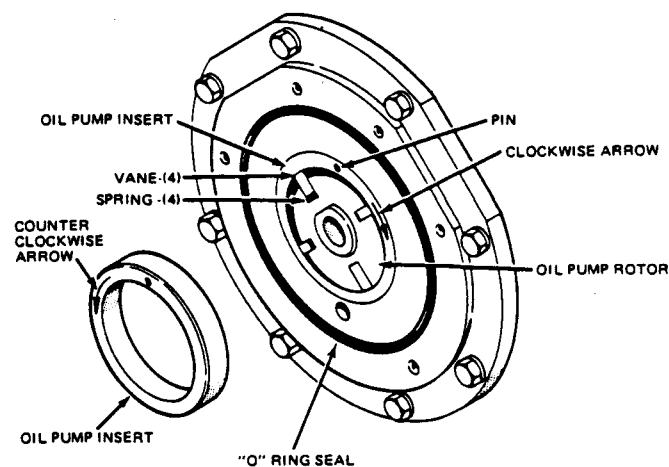
e. Install the rotor, springs, and vanes.

f. Replace the oil pump cover and secure with the screws.

NOTE: When changing the rotation of 80, 700 800, 900 Series it will require installation of the correct fan and/or flywheel to insure proper cooling of the compressor. All other models use same flywheel for either rotation.

g. On units with unloaders, attach the unloader tubing air receiver tubing, and (if used) the pilot valve tubing.

h. Be certain the drive motor now turns the compressor counterclockwise.



0091P8

Figure 3

CLEARANCE - TOLERANCE - TORQUE

MODEL	20	40	60 66A	80 88A	99A	100 200	300	400 440A	500 550A	600 660A	700 770A	800 880A	900 990A
<u>Piston Clearances:</u>													
H. P. at Skirt002/.0035	.002/.0035	.002/.0035	.002/.0035	.003/.005	.0055/.0075	.0045/.0075	.0045/.0075
L. P. at Skirt0025/.0045	.0035/.0055	.0055/.0075	.0055/.0075	.0055/.0075	.0025/.0045	.0035/.0055	.0035/.0055	.0045/.0065	.0055/.0075	.0045/.0065	.0055/.0075	.0055/.0075
<u>Piston Ring End Clearance</u>													
H. P. Compression005/.013	.007/.015	.007/.017	.007/.017	.010/.020	.010/.020	.013/.023	.013/.023
L. P. Compression010/.020	.013/.023	.017/.027	.017/.027	.017/.027	.010/.020	.013/.023	.013/.023	.017/.027	.017/.027	.017/.027	.017/.027	.017/.027
H. P. Oil005/.013	.007/.015	.007/.015	.007/.015	.010/.018	.010/.018	.013/.023	.013/.023
L. P. Oil010/.020	.013/.025	.017/.027	.017/.027	.017/.027	.010/.020	.013/.025	.013/.023	.017/.027	.017/.027	.017/.027	.017/.027	.017/.027
<u>Piston Ring Groove Clearance</u>													
H. P. Compression Ring002/.0035	.002/.0035	.002/.0035	.002/.0035	.002/.0035	.002/.0035	.002/.0035	.002/.0035
H. P. Oil Control Ring0015/.003	.0015/.003	.0015/.003	.0015/.003	.0015/.003	.0015/.003	.0015/.003	.0015/.003
L. P. Compression Ring002/.0035	.002/.0035	.0025/.0045	.0025/.0045	.0025/.0045	.002/.0035	.002/.0035	.002/.0035	.0025/.0045	.0025/.0045	.0025/.0045	.0025/.0045	.0025/.0045
L. P. Oil Control Ring0015/.003	.0015/.003	.002/.004	.002/.004	.002/.004	.0015/.003	.0015/.003	.0015/.003	.002/.004	.002/.004	.002/.004	.002/.004	.002/.004
Top of Piston to Top of Cylinder Clearance	-.005+.018	-.003+.020	-.003+.025	-.001+.022	-.006+.026	-.005+.018	-.004+.019	-.003+.020	-.001+.022	-.003+.025	-.001+.022	-.001+.022	-.006+.026
Connecting Rod Bearing Running Clearance0025/.0044	.0025/.0044	.0025/.0044	.0025/.0044	.0025/.0044	.0025/.0044	.0025/.0044	.0025/.0044	.0025/.0044	.0025/.0044	.0025/.0044	.0025/.0044	.0025/.0044
Crankshaft End Play003/.005	.003/.005	.003/.005	.003/.005	.003/.005	.003/.005	.003/.005	.003/.005	.003/.005	.003/.005	.003/.005	.003/.005	.003/.005
Oil Pump Rotor End Clearance .	.0015/.0035	.0015/.0035	.0015/.0035	.0015/.0035	.0015/.0035	.0015/.0035	.0015/.0035	.0015/.0035	.0015/.0035	.0015/.0035	.0015/.0035	.0015/.0035	.0015/.0035
<u>TORQUE DATA</u>													
<u>Valve Nut</u>													
H. P.						150 In. Lbs.	150 In. Lbs.	150 In. Lbs.	150 In. Lbs.	150 In. Lbs.	200 In. Lbs.	200 In. Lbs.	200 In. Lbs.
L. P.	110 In. Lbs.	132 In. Lbs.	132 In. Lbs.	132 In. Lbs.	200 In. Lbs.	150 In. Lbs.	150 In. Lbs.	200 In. Lbs.	200 In. Lbs.	200 In. Lbs.	200 In. Lbs.	200 In. Lbs.	200 In. Lbs.
Connecting Rod Bolts	120 In. Lbs.	150 In. Lbs.	350 In. Lbs.	350 In. Lbs.	175 Ft. Lbs.	120 In. Lbs.	150 In. Lbs.	150 In. Lbs.	350 In. Lbs.	350 In. Lbs.	350 In. Lbs.	350 In. Lbs.	175 Ft. Lbs.
Piston Pin Bolt					79 Ft. Lbs.								79 Ft. Lbs.
<u>Valve Plug or Unloader Sleeve</u>													
L. P.	100 Ft. Lbs.	100 Ft. Lbs.	200 Ft. Lbs.	200 Ft. Lbs.	200 Ft. Lbs.	100 Ft. Lbs.	100 Ft. Lbs.	100 Ft. Lbs.	100 Ft. Lbs.	200 Ft. Lbs.	100 Ft. Lbs.	200 Ft. Lbs.	200 Ft. Lbs.
H. P.						70 Ft. Lbs.	70 Ft. Lbs.	70 Ft. Lbs.	70 Ft. Lbs.	70 Ft. Lbs.	100 Ft. Lbs.	100 Ft. Lbs.	100 Ft. Lbs.
Flywheel Retainer Bolt	47 Ft. Lbs.	73 Ft. Lbs.	73 Ft. Lbs.	250 Ft. Lbs.	250 Ft. Lbs.	47 Ft. Lbs.	73 Ft. Lbs.	73 Ft. Lbs.	73 Ft. Lbs.	73 Ft. Lbs.	250 Ft. Lbs.	250 Ft. Lbs.	250 Ft. Lbs.
Cylinder Flange Bolts	47 Ft. Lbs.	73 Ft. Lbs.	142 Ft. Lbs.	142 Ft. Lbs.	142 Ft. Lbs.	47 Ft. Lbs.	73 Ft. Lbs.	73 Ft. Lbs.	142 Ft. Lbs.	142 Ft. Lbs.	142 Ft. Lbs.	142 Ft. Lbs.	142 Ft. Lbs.
Cylinder Head Bolts L. P.	29.7 Ft. Lbs.	29.7 Ft. Lbs.	73 Ft. Lbs.	73 Ft. Lbs.	73 Ft. Lbs.	29.7 Ft. Lbs.	29.7 Ft. Lbs.	29.7 Ft. Lbs.	29.7 Ft. Lbs.	29.7 Ft. Lbs.	73 Ft. Lbs.	73 Ft. Lbs.	73 Ft. Lbs.
Cylinder Head Bolts H. P.								73 Ft. Lbs.	73 Ft. Lbs.	73 Ft. Lbs.	73 Ft. Lbs.	73 Ft. Lbs.	73 Ft. Lbs.
Oil Pump Cover Bolts	8.8 Ft. Lbs.	8.8 Ft. Lbs.	8.8 Ft. Lbs.	8.8 Ft. Lbs.	8.8 Ft. Lbs.	8.8 Ft. Lbs.	8.8 Ft. Lbs.	8.8 Ft. Lbs.	8.8 Ft. Lbs.	8.8 Ft. Lbs.	8.8 Ft. Lbs.	8.8 Ft. Lbs.	8.8 Ft. Lbs.
Rear Retainer Bolts		29.7 Ft. Lbs.	29.7 Ft. Lbs.	29.7 Ft. Lbs.	29.7 Ft. Lbs.		29.7 Ft. Lbs.	29.7 Ft. Lbs.	29.7 Ft. Lbs.	29.7 Ft. Lbs.	29.7 Ft. Lbs.	29.7 Ft. Lbs.	29.7 Ft. Lbs.

NOTE: CLEARANCES AND TOLERANCES ARE IN INCHES.



INDEX to

COMPOSITE GROUPS

MODEL

Series

400

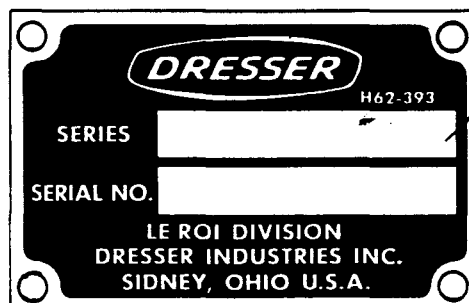
440A

June, 1980

GROUP NUMBER	GROUP NAME	GROUP NUMBER	GROUP NAME
1	CYLINDERS	9	REAR RETAINER AND OIL PUMP
2	CYLINDER HEAD Low Pressure (Without Unloaders)	10	FLYWHEEL
2A	CYLINDER HEAD Low Pressure (With Unloaders)	11	CRANKCASE
2B	CYLINDER HEAD Low Pressure "A" Series Only (With Unloaders)	12	CRANKCASE BREATHER
3	CYLINDER HEAD High Pressure (Without Unloaders)	13	UNLOADER TUBE
3A	CYLINDER HEAD High Pressure (With Unloaders)		
3B	CYLINDER HEAD High Pressure "A" Series Only (With Unloaders)		
4	AIR FILTER		
5	CRANKSHAFT		
6	PISTONS AND CONNECTING RODS		
7	INTERCOOLER		
8	OIL PUMP COVER (Without Unloaders)		
8A	OIL PUMP COVER (With Unloaders)		

**WHEN CONSULTING YOUR DISTRIBUTOR
OR THE FACTORY CONCERNING YOUR
COMPRESSOR, OR WHEN ORDERING
SERVICE LITERATURE OR SERVICE PARTS,
ALWAYS FURNISH COMPLETE UNIT MODEL
NUMBER AND SERIAL NUMBER.**

THIS IS THE MODEL NUMBER



**THIS PLATE IS LOCATED ON
THE COMPRESSOR CRANKCASE**

GROUPS AND COMPONENTS

Group No. 1 CYLINDER

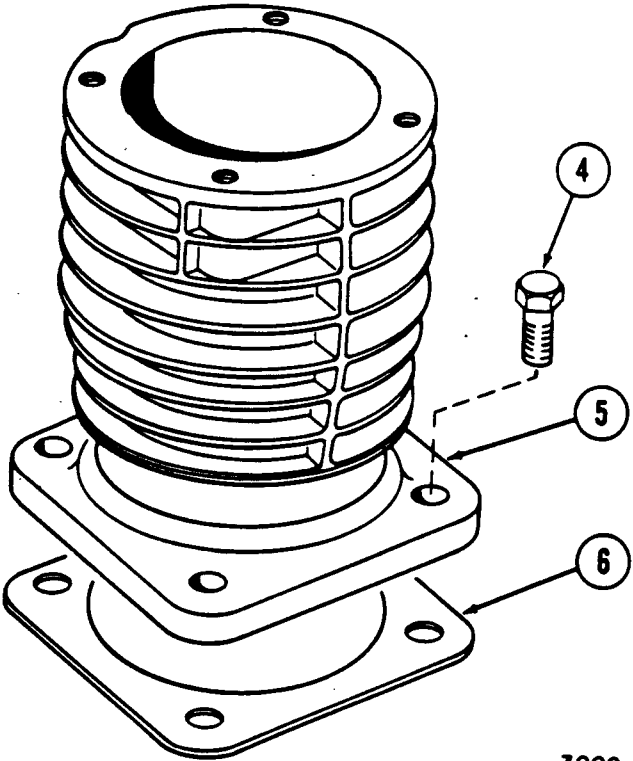
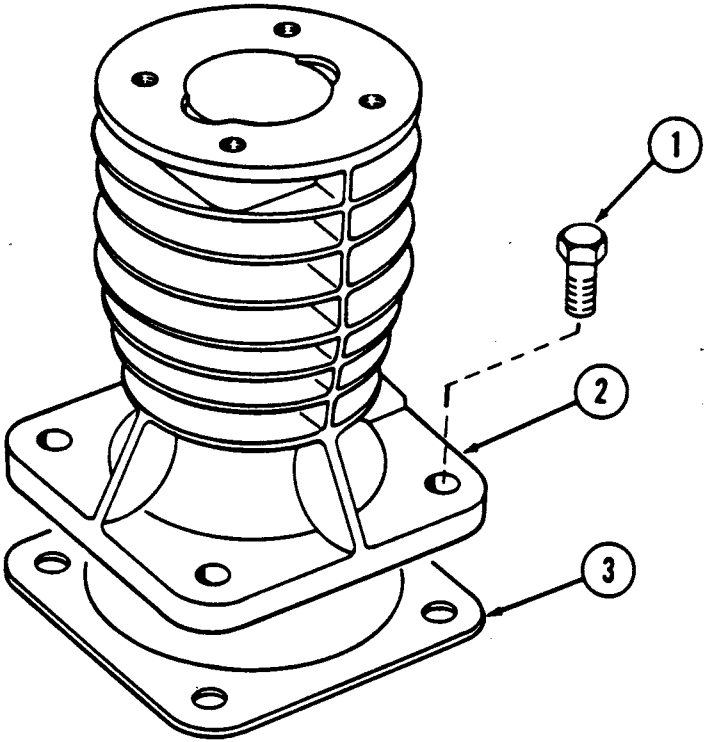
MODEL

Series
400
440A

PART NUMBERS

STANDARD				
GH1-321-1				

Ref.	Part Description	Qty.
1	SCREW, Cap	4
2	CYLINDER, High pressure	1
3	GASKET, High pressure cylinder	1
4	SCREW, Cap	1
4	SCREW, Cap	3
5	CYLINDER, Low pressure	1
6	GASKET, Low pressure cylinder	1



3009



Group No. 2 Cylinder Head, Low Pressure

GROUPS AND COMPONENTS

(Without Unloaders)

Group No. 2 CYLINDER HEAD, Low Pressure

MODEL

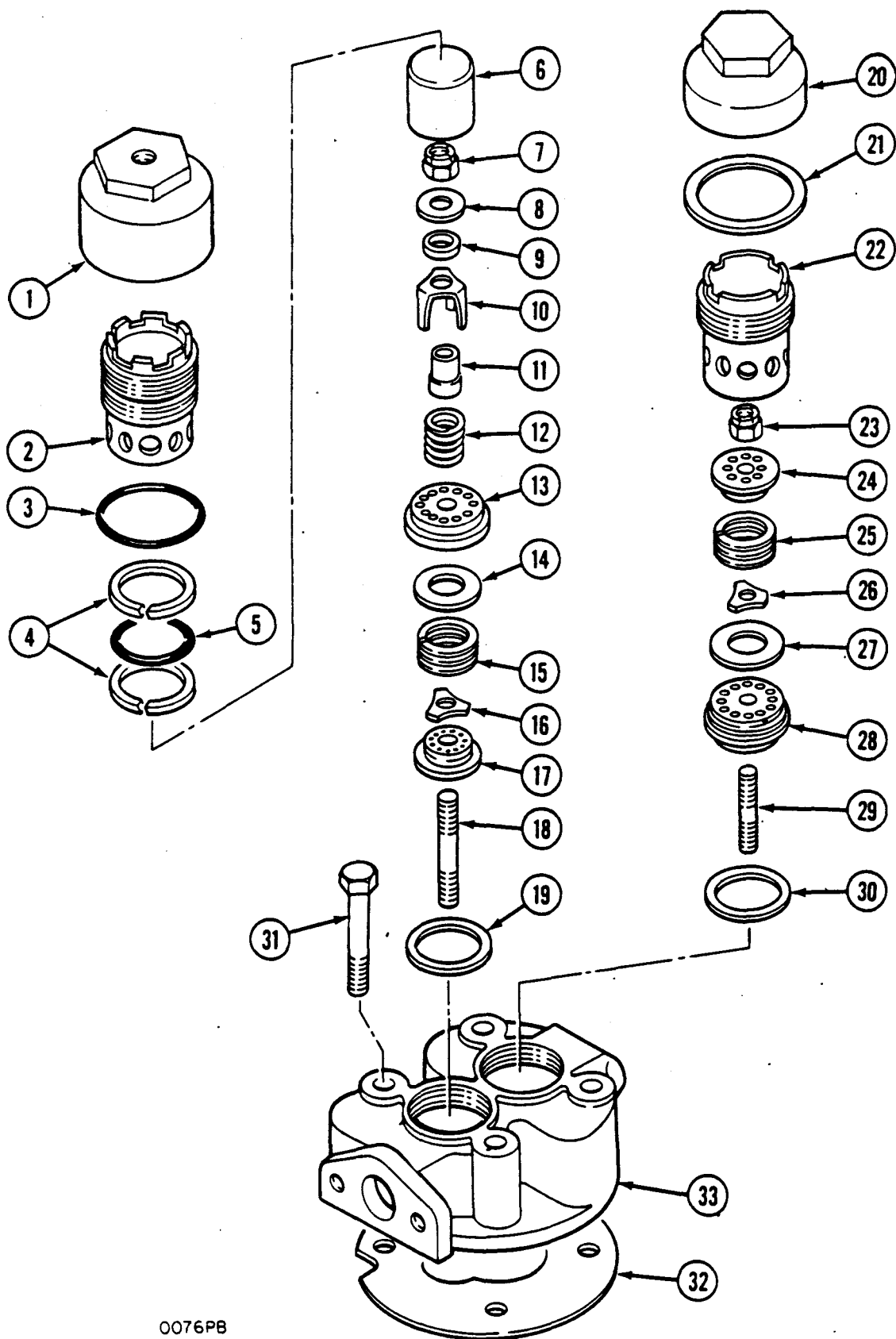
Series
400

PART NUMBERS

STANDARD

7GH2-274

Ref.	Part Description	Qty.				
	HEAD ASSY., Low pressure cylinder	1	6AH2-276-1 Inc. A to J			
1	CAP, Suction valve	1	H4-264-2--A			
2	GASKET, Cap	1	H16-1531-2			
3	SLEEVE	1	H175-33-2			
	VALVE ASSEMBLY, Suction	1	1AH15-1251-1 Inc. B to E			
4	NUT	1	53-729--B			
	RETAINER ASSY., Spring (Not Ser. Sep.)	1	1AH15-1252-1 Inc. C & D			
5	STUD (Not Ser. Sep.)	1	H105-544--C			
10	RETAINER, (Not Ser. Sep.)	1	H15-1252-1--D			
7	GUIDE, Valve (Not Ser. Sep.)	1	H58-107-2			
8	VALVE	1	H15-656			
9	SPRING, Valve	1	H24-1066			
6	SEAT, Valve (Not Ser. Sep.)	1	H15-1251-1			
11	GASKET, Valve	1	H16-1467--E			
1	CAP, Discharge valve	1	H2-264-2			
2	GASKET, Cap	1	H16-1531-2			
12	PLUG, Discharge valve	1	H175-34			
	VALVE ASSEMBLY, Discharge	1	1AH15-1251 Inc. F to I			
13	NUT	1	53-729--F			
	VALVE SEAT ASSY., (Not Ser. Sep.)	1	AH15-1251 Inc. G & H			
19	SEAT, Valve (Not Ser. Sep.)	1	H15-1251--G			
14	STUD, (Not Ser. Sep.)	1	H105-544--H			
16	SPRING, Valve	1	H24-1066			
17	GUIDE, Valve (Not Ser. Sep.)	1	H58-107-2			
18	VALVE	1	H15-656			
15	RETAINER, Spring (Not Ser. Sep.)	1	H15-1252			
20	GASKET, Discharge valve	1	H16-1466--I			
21	SCREW, Cap	4	02-80			
22	GASKET, Cylinder head	1	16-1969			
23	HEAD, Cylinder	1	H2-276-1--J			



Group No. 2A Cylinder Head, Low Pressure

GROUPS AND COMPONENTS

(With Unloaders)

Group No. 2A CYLINDER HEAD, Low Pressure

MODEL

Series

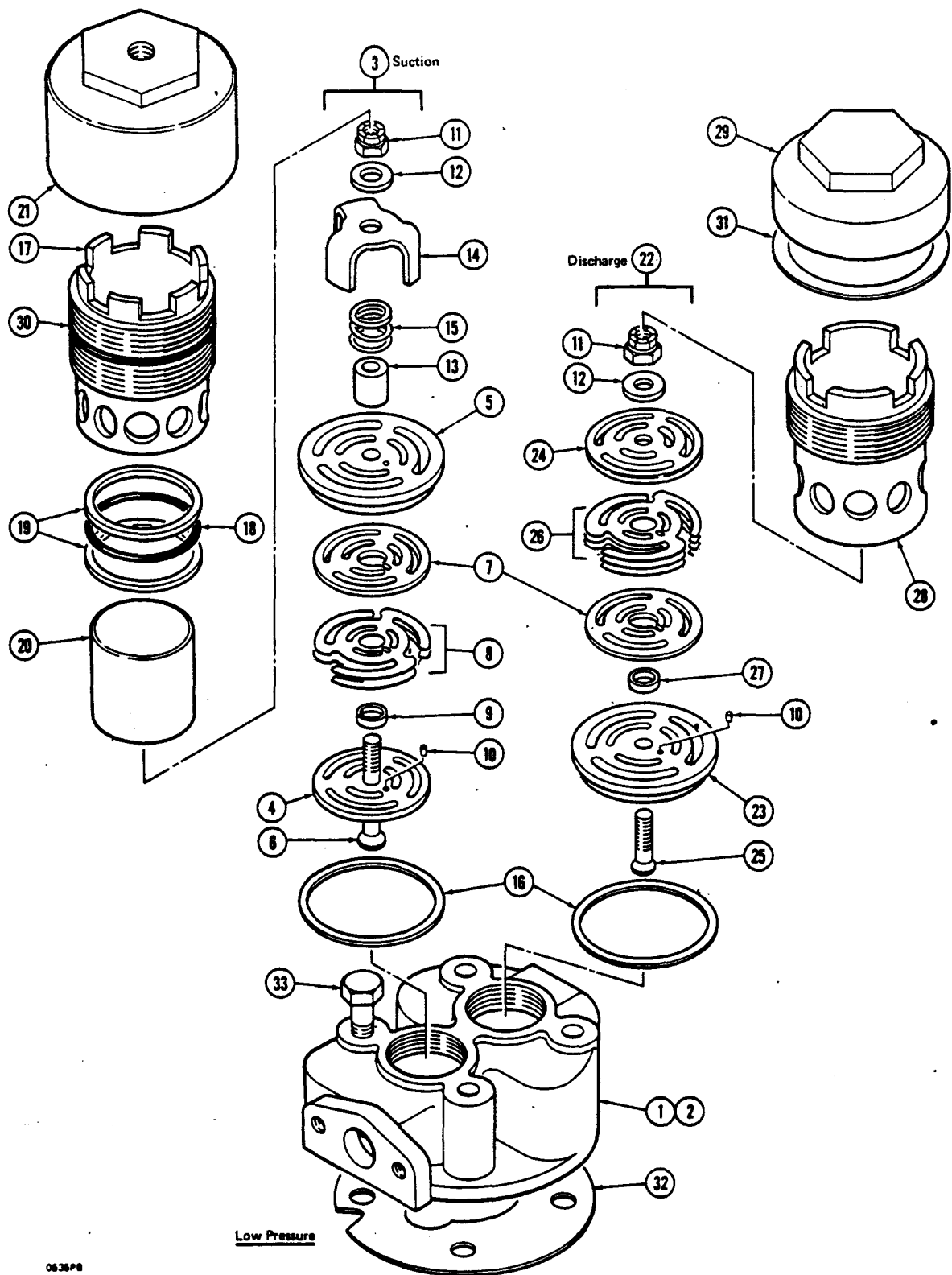
400

PART NUMBERS

STANDARD

6GH2-274

Ref.	Part Description	Qty.				
	HEAD ASSEMBLY, Low pressure cylinder	1	AH2-276-1 Inc. A to J			
1	CAP, Suction valve	1	H4-264--A			
2	SLEEVE, Holddown	1	175-33			
3	"O" Ring, Cap	1	H125-277			
4	SEAL, Felt	2	H125-256			
5	"O" Ring, Plunger to sleeve	1	H125-286			
6	PLUNGER	1	H8-369			
	VALVE ASSEMBLY, Suction	1	AH15-1251-1 Inc. B to E			
7	NUT	1	53-729--B			
8	WASHER	1	06-69			
9	SPACER, Push rod	1	H22-593			
10	ROD, Push	1	H99-110			
11	SPACER (Not Ser. Sep.)	1	H22-560			
12	SPRING, Plunger	1	H24-482			
13	SEAT, Valve (Not Ser. Sep.)	1	H15-1251-1			
14	VALVE, Inlet	1	H15-656			
15	SPRING, Valve	1	H24-1066			
16	GUIDE, Valve (Not Ser. Sep.)	1	H58-107-2			
	RETAINER ASSEMBLY (Not Ser. Sep.)	1	AH15-1252-1 Inc. C & D			
17	RETAINER (Not Ser. Sep.)	1	H15-1252-1--C			
18	STUD, (Not Ser. Sep.)	1	105-545--D			
19	GASKET, Suction valve	1	H16-1467--E			
20	CAP, Discharge valve	1	H4-264-2			
21	GASKET, Cap	1	H16-1531-2			
22	PLUG, Discharge valve	1	H175-34			
	VALVE ASSEMBLY, Discharge	1	1AH15-1251 Inc. F to I			
23	NUT	1	53-729--F			
24	RETAINER, Spring (Not Ser. Sep.)	1	H15-1252			
25	SPRING, Valve	1	H24-1066			
26	GUIDE, Valve (Not Ser. Sep.)	1	H58-107-2			
27	VALVE	1	H15-656			
	VALVE SEAT ASSY., (Not Ser. Sep.)	1	AH15-1251 Inc. G & H			
28	SEAT, Valve (Not Ser. Sep.)	1	H15-1251--G			
29	STUD, (Not Ser. Sep.)	1	H105-544--H			
30	GASKET, Discharge valve	1	H16-1466--I			
33	HEAD, Low pressure cylinder	1	H2-276-1--J			
32	GASKET, Cylinder head	1	16-1969			
31	SCREW, Cap	4	02-80			



Group No. 2B Cylinder Head, Low Pressure



GROUPS AND COMPONENTS

Group No. 2B CYLINDER HEAD, Low Pressure

MODEL

Series
440A

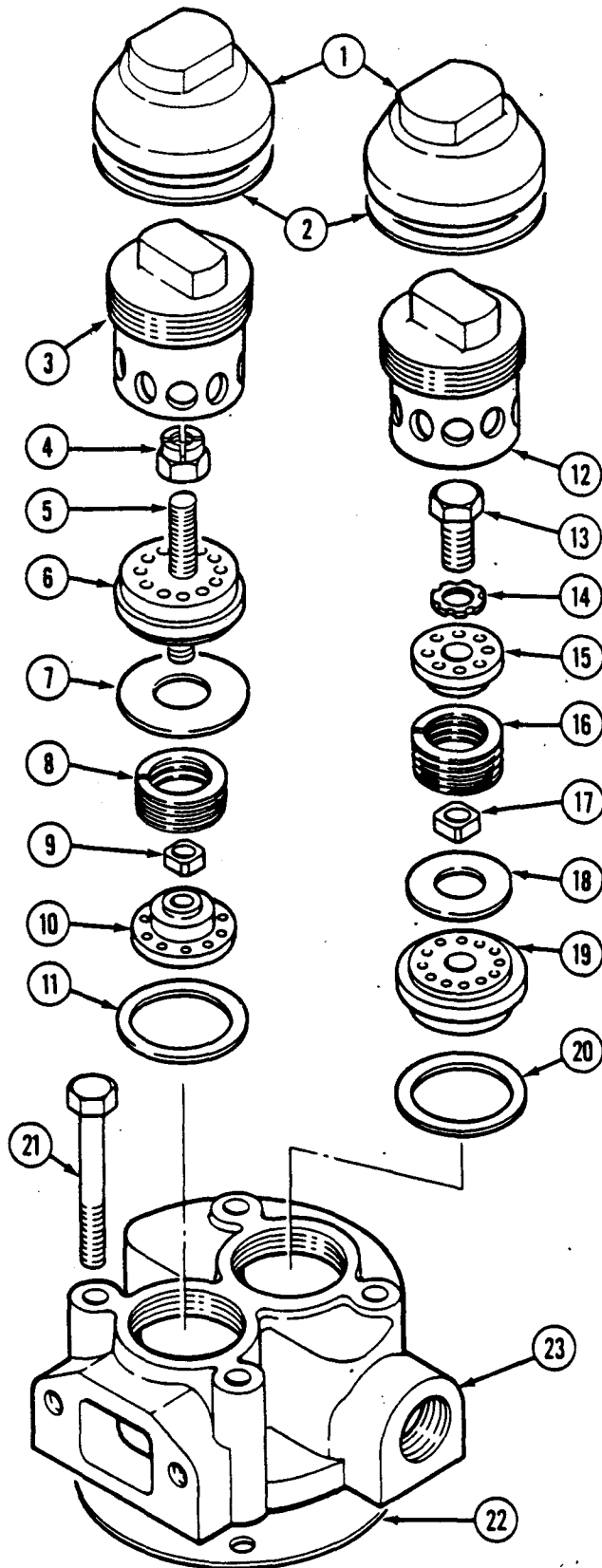
PART NUMBERS

STANDARD

G2-274-1

Ref.	Part Description	Qty.				
1	HEAD ASSEMBLY, L.P. Cylinder	1	A2-276-4			
3	VALVE ASSEMBLY, Suction	1	Inc. A to F 15-1532--A			
5	SEAT, Valve	1	Inc. B to C 220-148-31--B			
4	GUARD	1	220-148-32			
6	BOLT, Center	1	220-148-33			
7	PLATE, Valve	1	220-148-34			
8	PLATE, Spring	2	220-148-35			
9	RING, Guide	1	220-148-36			
10	PIN, Locating	1	220-148-37			
11	NUT, Lock	1	220-148-38			
	PIN, Special, Nut	1	220-148-87			
12	WASHER	1	220-148-34			
13	SPACER	1	220-148-40			
14	UNLOADER	1	220-148-41			
15	SPRING	1	220-148-9--C			
16	GASKET, Valve	1	H16-1466			
17	SLEEVE, Holddown	1	175-33-3			
18	O-RING	1	H125-286			
19	SEAL, Felt	2	H125-256			
20	PLUNGER	1	8-795			
21	CAP	1	H4-264			
22	VALVE ASSEMBLY, Discharge	1	15-1533			
			Inc. D to E			
23	SEAT, Valve	1	220-148-43--D			
24	GUARD	1	220-148-44			
25	BOLT, Center	1	220-148-45			
7	PLATE, Valve	1	220-148-34			
26	PLATE, Spring	3	220-148-47			
27	RING, Guide	1	220-148-48			
10	PIN, Locating	1	220-148-37			
11	NUT, Self-Lock	1	220-148-38			
	PIN, Special Nut	1	220-148-87			
12	WASHER	1	220-148-39--E			
16	GASKET, Valve	1	H16-1466			
28	PLUG	1	H175-34			
29	CAP	1	H4-264-2			
30	O-RING	1	H125-277			
31	GASKET	1	H16-1531-2			
2	HEAD, L.P. Cylinder	1	2-276-4--F			
32	GASKET, L.P. Cylinder Head	1	16-1969			
33	SCREW, Cap	4	02-80			

• Part number is same as in



0070P8

Group No. 3 Cylinder Head, High Pressure

GROUPS AND COMPONENTS

(Without Unloaders)

Group No. 3

CYLINDER HEAD, High Pressure

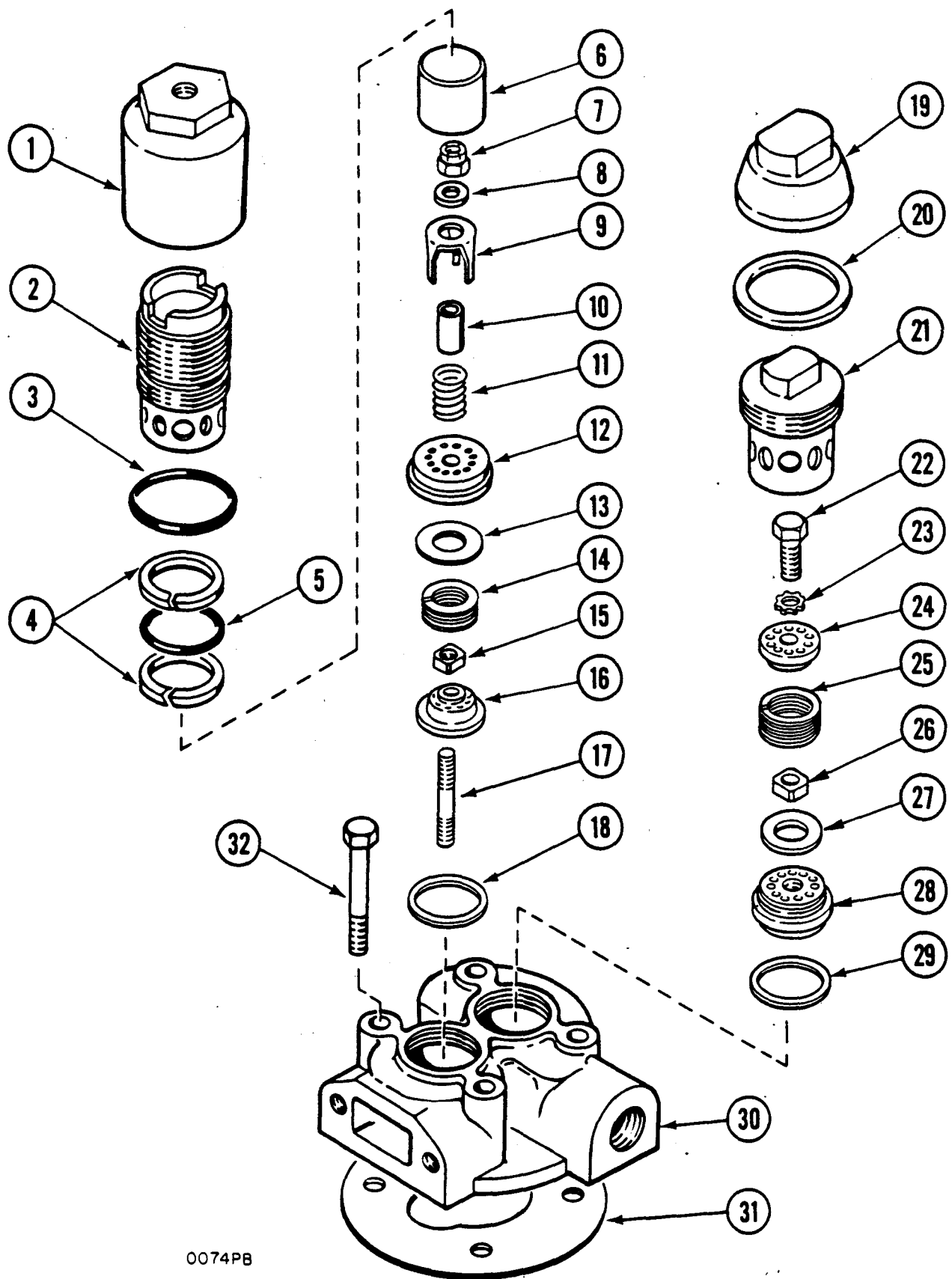
MODEL

Series
400

PART NUMBERS

Ref.	Part Description	Qty.	STANDARD				
			5GH2-274				
	HEAD ASSY., High pressure cylinder	1	3AH2-274				
1	CAP, Suction valve	1	Inc. A to H				
2	GASKET, Cap	1	H4-410--A				
3	PLUG, Suction valve	1	H16-1531-1				
	VALVE ASSEMBLY, Suction	1	H19-260				
4	NUT	1	3AH15-1256-1				
9	GUIDE, Valve (Not Ser. Sep.)	1	Inc. B to E				
	RETAINER ASSY., Valve (Not Ser. Sep.)	1	53-729-1--B				
10	RETAINER, Valve (Not Ser. Sep.)	1	H58-81-1				
5	STUD (Not Ser. Sep.)	1	2AH15-1256-1				
7	VALVE, Suction	1	Inc. C & D				
6	SEAT, Valve	1	H15-1256-1--C				
8	SPRING, Valve	1	H105-546--D				
11	GASKET, Suction valve	1	H15-604				
			H15-1255-1				
			H24-634				
			H16-1465--E				
1	CAP, Discharge valve	1	H4-410				
2	GASKET, Cap	1	H16-1531-1				
12	PLUG, Discharge valve	1	H19-259				
	VALVE ASSEMBLY, Discharge	1	AH15-1255				
13	SCREW, Cap	1	Inc. F to G				
14	WASHER, Lock	1	02-518--F				
15	RETAINER, Spring (Not Ser. Sep.)	1	05-50				
16	SPRING	1	H15-1256				
17	GUIDE, Valve (Not Ser. Sep.)	1	H24-634				
18	VALVE, Discharge	1	H58-81-1				
19	SEAT, Valve (Not Ser. Sep.)	1	H15-604				
20	GASKET, Valve	1	H15-1255				
23	HEAD, High pressure cylinder	1	H16-1465--G				
22	GASKET, Cylinder head	1	H2-274--H				
21	SCREW, Cap	4	H16-1380				
			02-44				

• Part number is same as in



0074PB

Group No. 3A Cylinder Head, High Pressure

Group No. 3A

CYLINDER HEAD, High Pressure

MODEL

Series

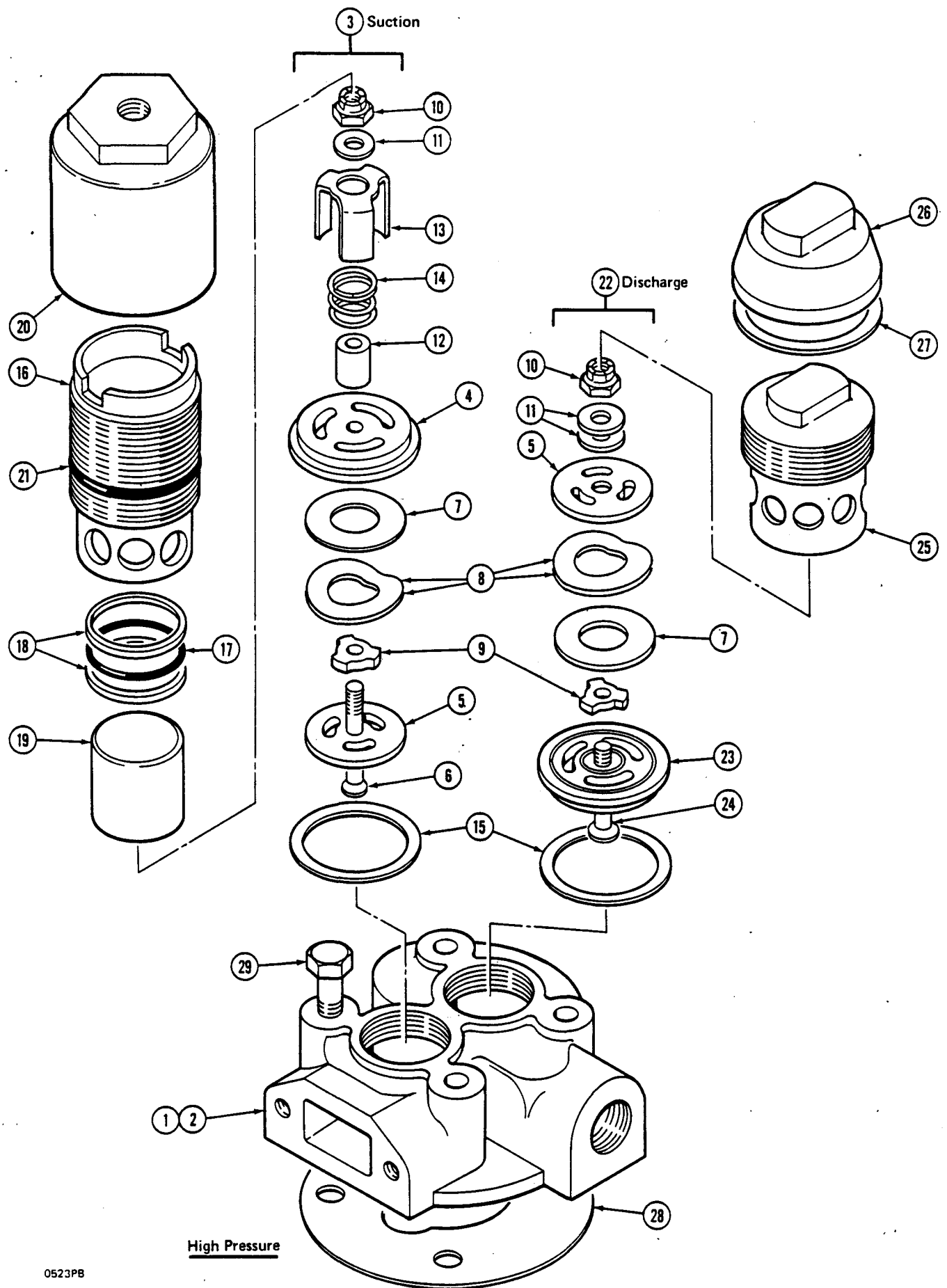
400

PART NUMBERS

STANDARD

2GH2-274

Ref.	Part Description	Qty.				
	HEAD ASSY., High pressure cylinder	1	1AH2-274 Inc. A to H			
1	CAP, Suction valve	1	H4-265-2--A			
2	SLEEVE, Holddown	1	H175-29-3			
3	"O" Ring, Cap	1	H125-263			
4	SEAL, Felt, plunger to sleeve	2	H125-259			
5	"O" Ring, Plunger to sleeve	1	H125-285			
6	PLUNGER	1	H8-359			
	VALVE ASSEMBLY, Suction	1	1AH15-1256-1 Inc. B to E			
7	NUT	1	53-729-1--B			
8	WASHER	1	06-68			
9	ROD, Push	1	H99-111			
10	SPACER, Plunger spring	1	H22-561-1			
11	SPRING, Plunger	1	H24-504			
12	SEAT, Valve (Not Ser. Sep.)	1	H15-1255-1			
13	VALVE	1	H15-604			
14	SPRING, Valve	1	H24-634			
15	GUIDE, Valve	1	H58-81-1			
	RETAINER ASSY., Spring (Not Ser. Sep.)	1	AH15-1256-1 Inc. C & D			
16	RETAINER, Spring (Not Ser. Sep.)	1	H15-1256-1--C			
17	STUD (Not Ser. Sep.)	1	H105-547--D			
18	GASKET, Valve	1	H16-1465--E			
19	CAP, Discharge valve	1	H4-410			
20	GASKET, Cap	1	H16-1531-1			
21	PLUG, Discharge valve	1	H19-259			
	VALVE ASSEMBLY, Discharge	1	AH15-1255 Inc. F to G			
22	SCREW, Cap	1	02-518--F			
23	WASHER, Lock	1	05-107			
24	RETAINER, Spring (Not Ser. Sep.)	1	H15-1256			
25	SPRING, Valve	1	H24-634			
26	GUIDE, Valve (Not Ser. Sep.)	1	H58-81-1			
27	VALVE	1	H15-604			
28	SEAT, Valve (Not Ser. Sep.)	1	H15-1255			
29	GASKET, Valve	1	H16-1465--G			
30	HEAD, High pressure cylinder	1	H2-274--H			
31	GASKET, Cylinder head	1	H16-1380			
32	SCREW, Cap	4	02-44			



0523PB

Group No. 3B Cylinder Head, High Pressure



GROUPS AND COMPONENTS

Group No. 3B

CYLINDER HEAD, High Pressure

MODEL

Series

440A

PART NUMBERS

Ref.	Part Description	Qty.	STANDARD	STANDARD			
			G2-274-1	G2-274-1			
				S/N 4016 x 770 and Before			
1	HEAD ASSEMBLY, H.P. Cylinder	1	A2-274-1	●			
3	VALVE ASSEMBLY, Suction	1	Inc. A to F 15-1534 --A	● --A			
4	SEAT, Valve	1	Inc. B to C 229-148-78--B				
5	GUARD	1	220-148-79				
6	BOLT, Center	1	220-148-80				
7	RING, Valve	1	220-148-55				
8	SPRING	2	220-148-75				
9	RING, Guide	1	220-148-76				
10	NUT, Special self lock	1	220-148-77				
	PIN, Special, Nut	1	220-148-86				
11	WASHER	1	220-148-59				
12	SPACER	1	220-148-81				
13	UNLOADER	1	220-148-70				
14	SPRING	1	220-148-9--C				
15	GASKET, Valve	1	16-1878	●			
16	SLEEVE	1	175-29-9	●			
17	O-RING	1	H125-285	●			
18	SEAL, Felt	2	H125-259	●			
19	PLUNGER	1	8-796	●			
20	CAP	1	H4-265-2	●			
21	O-RING	1	H125-263	●			
22	VALVE ASSEMBLY, Discharge	1	15-1535	●			
23	SEAT, Valve	1	Inc. D to E 220-148-72--D				
	PIN, Special, Locating	1	220-148-84				
5	GUARD	1	220-148-73				
24	BOLT, Center	1	220-148-74				
7	RING, Valve	1	220-148-55				
8	SPRING	2	220-148-75				
9	RING, Guide	1	220-148-76				
10	NUT, Special, Self Lock	1	220-148-77				
	PIN, Special, Nut	1	220-148-86				
11	WASHER	2	220-148-59--E				
15	GASKET, Valve	1	16-1878	●			
25	PLUG	1	H19-259	●			
26	CAP	1	H4-410	●			
27	GASKET, Cap	1	H16-1531-1	●			
2	HEAD, High Pressure Cylinder	1	2-274-1--F	●--F			
28	GASKET, High Pressure Cylinder						
	Head	1	H16-1380	●			
29	SCREW, Cap	4	02-44	●			

● Part number is same as in first column.

GROUPS AND COMPONENTS

Group No. 4 AIR FILTER

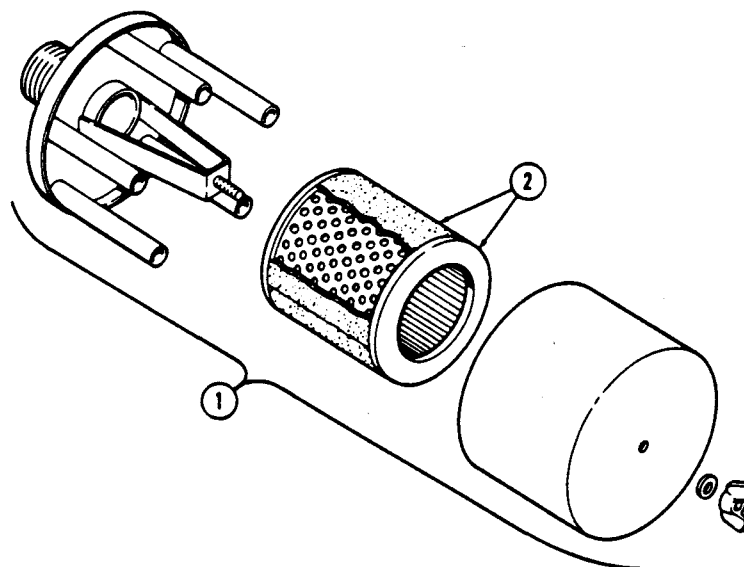
MODEL

Series
400
440A

PART NUMBERS

STANDARD	OPTIONAL			
GH43-660-1	G43-762-1			

Ref.	Part Description	Qty.
1	FILTER ASSEMBLY, Air	1
2	ELEMENT	1
	LABEL	1



OPTIONAL: Polyester Element

NOTE: Group G43-762-1
Standard on gas units
after S/N 4016X374

• Part number is same as in

GROUPS AND COMPONENTS

Group No. 5

CRANKSHAFT

MODEL

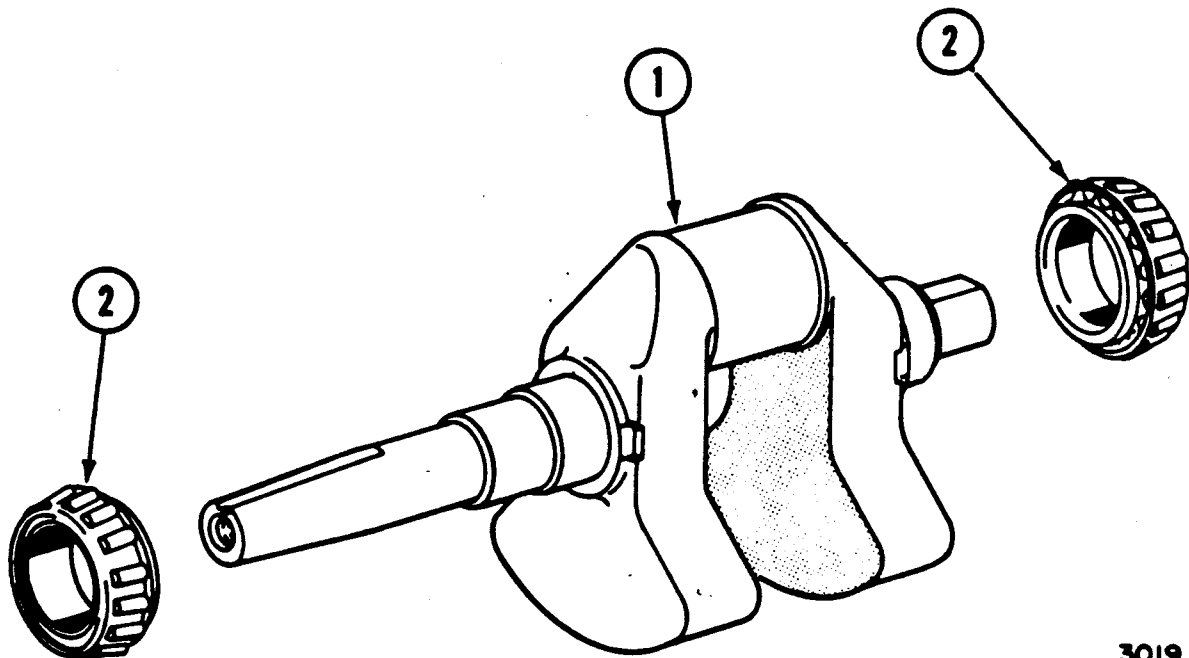
Series
400
440A

PART NUMBERS

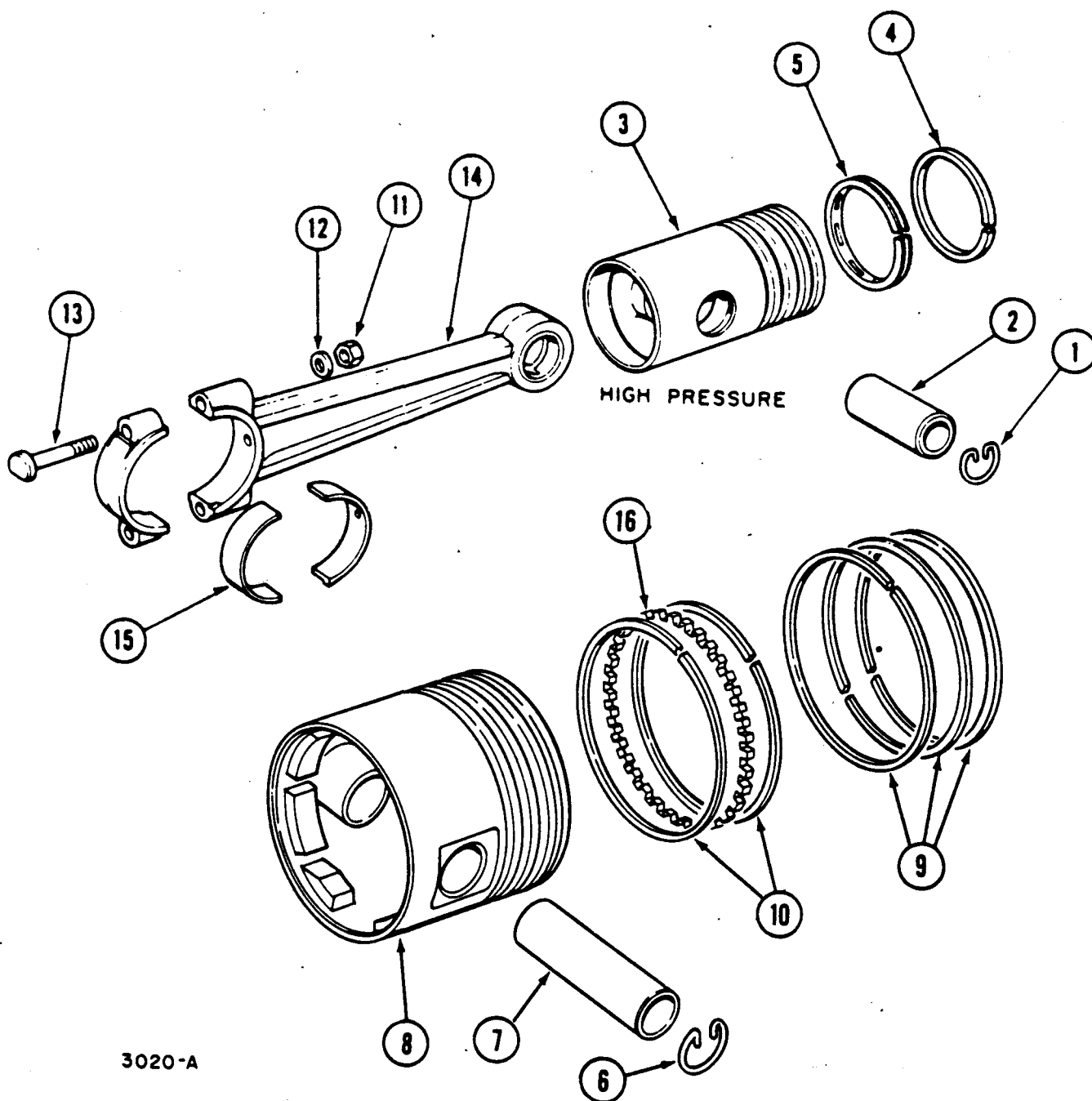
STANDARD

GH5-406-2

Ref.	Part Description	Qty.					
	CRANKSHAFT ASSEMBLY	1	AH5-406-2 Inc. A & B				
1	CRANKSHAFT (Not Ser. Sep.)	1	H5-406-2--A				
2	CONE, Bearing	2	H181-261--B				



3019



3020-A

Group No. 6 Pistons And Connecting Rods

GROUPS AND COMPONENTS

Group No. 6

PISTONS AND CONNECTING RODS

MODEL

Series

400

440A

PART NUMBERS

STANDARD

GH8-388-1

Ref.	Part Description	Qty.					
1	RETAINER, Piston pin	2	H31-556				
	PISTON ASSEMBLY, High pressure	1	AH8-388-1				
2	PIN, Piston (Not Ser. Sep.)	1	Inc. A & B				
3	PISTON (Not Ser. Sep.)	1	H17-730--A				
	RING KIT, H.P. piston	1	H8-388-1--B				
		1	H204-290				
4	RING, Compression (Not Ser. Sep.)	3	Inc. C & D				
5	RING, Oil (Not Ser. Sep.)	1	H18-394--C				
6	RETAINER, Piston pin	2	H18-395--D				
	PISTON ASSEMBLY, Low pressure	1	H31-556				
		1	AH8-395				
			Inc. E & F				
7	PIN, Piston (Not Ser. Sep.)	1	H17-729--E				
8	PISTON (Not Ser. Sep.)	1	H8-395--F				
	RING KIT, L.P. piston	1	H204-388				
			Inc. G to H				
9	RING, Compression (Not Ser. Sep.)	3	H18-496--G				
10	RING, Oil (Not Ser. Sep.)	2	H18-497				
16	RING, Expander spacer (Not Ser. Sep.)	1	H18-498--H				
	ROD ASSEMBLY, Connecting	2	AH7-95-5				
			Inc. I to J				
11	LOCKNUT	4	H53-396--I				
12	WASHER	4	H20-572				
	BUSHING, Piston pin	2	H21-590				
13	BOLT, Connecting rod	4	H34-573				
14	ROD, Connecting (Not Ser. Sep.)	2	H7-95-5--J				
	BEARING KIT, Connecting rod	2	AH204-300				
			Inc. (2) K				
15	INSERT, Bearing, connecting rod	4	H21-527--K				

• Part number is same as in

GROUPS AND COMPONENTS

Group No. 7

INTERCOOLER

MODEL

Series

400

440A

PART NUMBERS

STANDARD

GH55-2173

Ref.	Part Description	Qty.					
1	SCREW, Cap	2	02-37				
2	SCREW, Cap	3	02-36				
3	WASHER, Lock	5	05-51				
4	TUBE, Intercooler	1	AH55-2173				
5	GASKET, High pressure	1	H16-1384				
6	GASKET, Low pressure	1	H16-1385				
7	VALVE, Safety	1	2AH15-646				
8	NUT, Speed	2	H53-394				
9	SCREW, Cap	2	02-2				
10	FASTENER	1	H83-401				
11	SUPPORT, Intercooler	1	H39-3305				
	WASHER	1	06-71				
	CLAMP	1	H83-488				
	WASHER, Lock	2	05-49				
	SCREW, Cap	1	02-6				

GROUPS AND COMPONENTS

Group No. 8 OIL PUMP COVER (Without Unloaders)

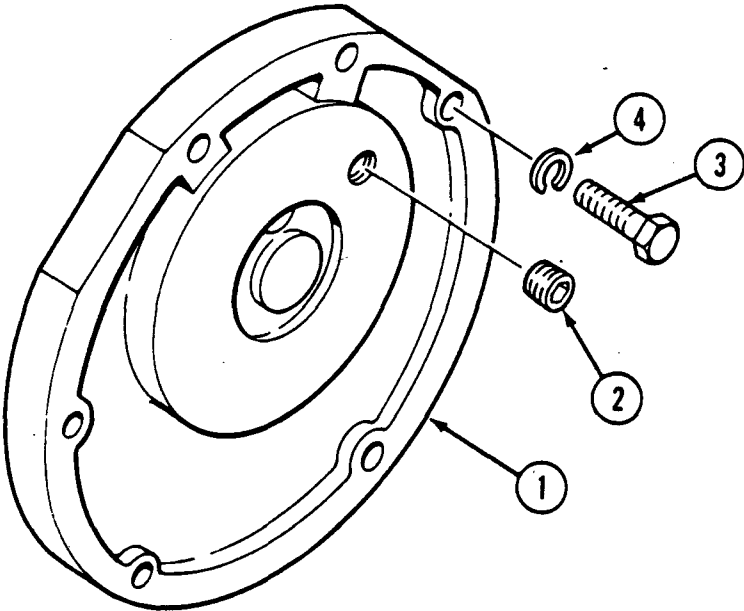
MODEL

Series
400

PART NUMBERS

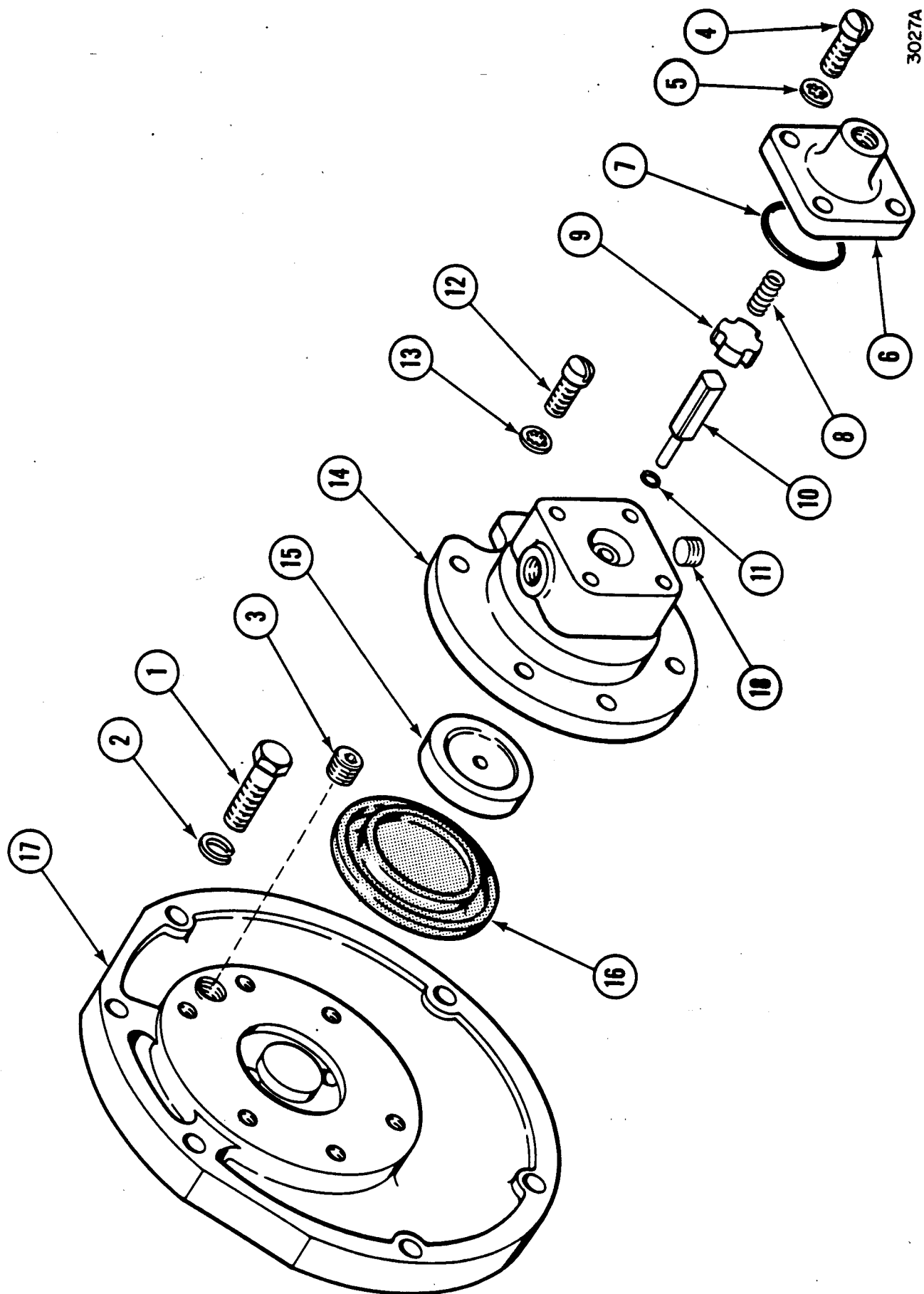
STANDARD
GH14-1153-1

Ref.	Part Description	Qty.					
1	COVER, Oil pump	1	AH14-1153-1				
2	PLUG, Pipe	1	19-332				
3	SCREW, Cap	6	02-6				
4	WASHER, Lock	6	05-49				
	DECAL, Rotation	1	H62-404				



OO71PB

• Part number is same as in



3027A

Group No. 8A Oil Pump Cover

GROUPS AND COMPONENTS

Group No. 8A OIL PUMP COVER (With Unloaders)

MODEL

Series

400

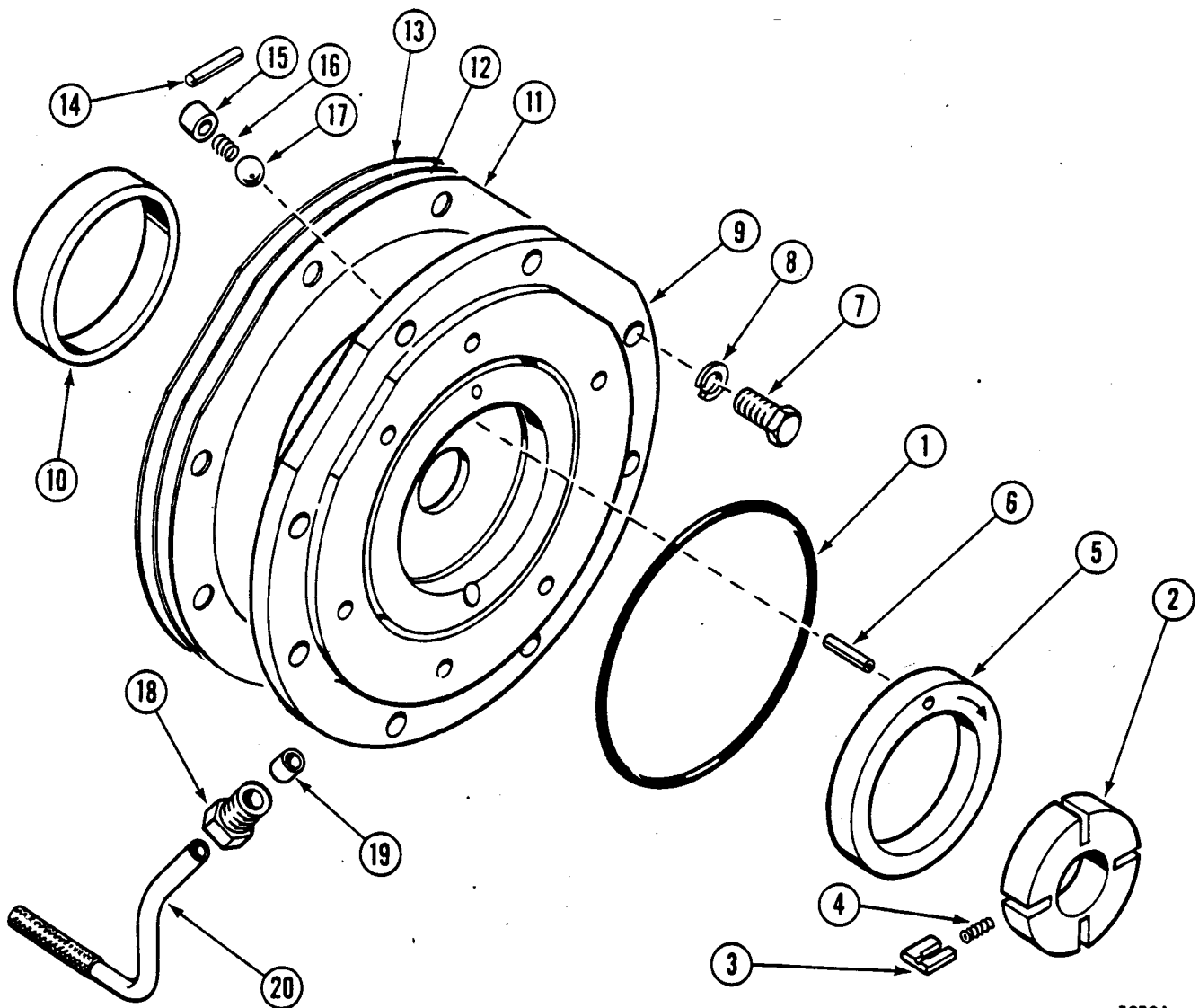
440A

PART NUMBERS

STANDARD

GH14-1153

Ref.	Part Description	Qty.					
1	SCREW, Cap	6	02-6				
2	WASHER, Lock	6	05-49				
	VALVE ASSY., Air control	1	AH14-1153				
3	PLUG, Pipe	1	Inc. A to B				
4	SCREW, Machine	1	011-101--A				
5	WASHER, Lock	4	03-110				
6	COVER, Valve	4	H20-584				
7	SEAL, Cover	1	H14-1147				
		1	H125-279				
8	SPRING	1	H24-528				
9	VALVE, Check	1	H15-731-1				
10	PIN	1	H17-649				
11	SEAL, Pin	1	H125-280				
12	SCREW, Machine	6	03-110				
13	WASHER, Lock	6	H20-584				
14	BODY, Valve	1	H116-296				
15	PISTON	1	H8-381				
16	DIAPHRAGM	1	H186-31-3				
17	COVER, Oil pump	1	H14-1153				
18	PLUG, Orifice (start-stop only)	1	54-416--B				
	DECAL, Rotation	1	H62-404				



3030A

Group No. 9 Rear Retainer And Oil Pump

GROUPS AND COMPONENTS

Group No. 9 REAR RETAINER AND OIL PUMP

MODEL

Series

400

440A

PART NUMBERS

STANDARD

2GH31-541

Ref.	Part Description	Qty.					
1	"O" Ring, Oil pump cover	1	125-186				
2	ROTOR, Oil pump	1	H101-73-1				
3	VANE, Oil pump	4	H42-184				
4	SPRING, Vane	4	H24-513				
5	INSERT	1	H81-237				
6	PIN, Roll	1	17-595				
7	SCREW, Cap	8	02-36				
8	WASHER, Lock	8	05-51				
	RETAINER ASSEMBLY, Rear	1	AH31-541 Inc. A & B				
9	RETAINER, Rear	1	H31-541--A				
10	CUP, Bearing	1	H181-262--B				
11	SHIM, 0.005 in. thick	3	H22-573				
12	SHIM, 0.0075 in. thick	3	H22-573-1				
13	SHIM, 0.020 in. thick	1	H22-573-2				
14	PIN, Roll	1	17-593				
15	RETAINER, Oil relief spring	1	H31-550				
16	SPRING, Oil relief	1	H24-529				
17	BALL, Nylon, oil relief valve	1	H30-18				
18	FITTING, Oil intake tube	1	182-5				
19	SLEEVE, Rubber	1	63-179				
20	TUBE, Oil intake	1	AH55-1258				

GROUPS AND COMPONENTS

Group No. 10

FLYWHEEL

MODEL

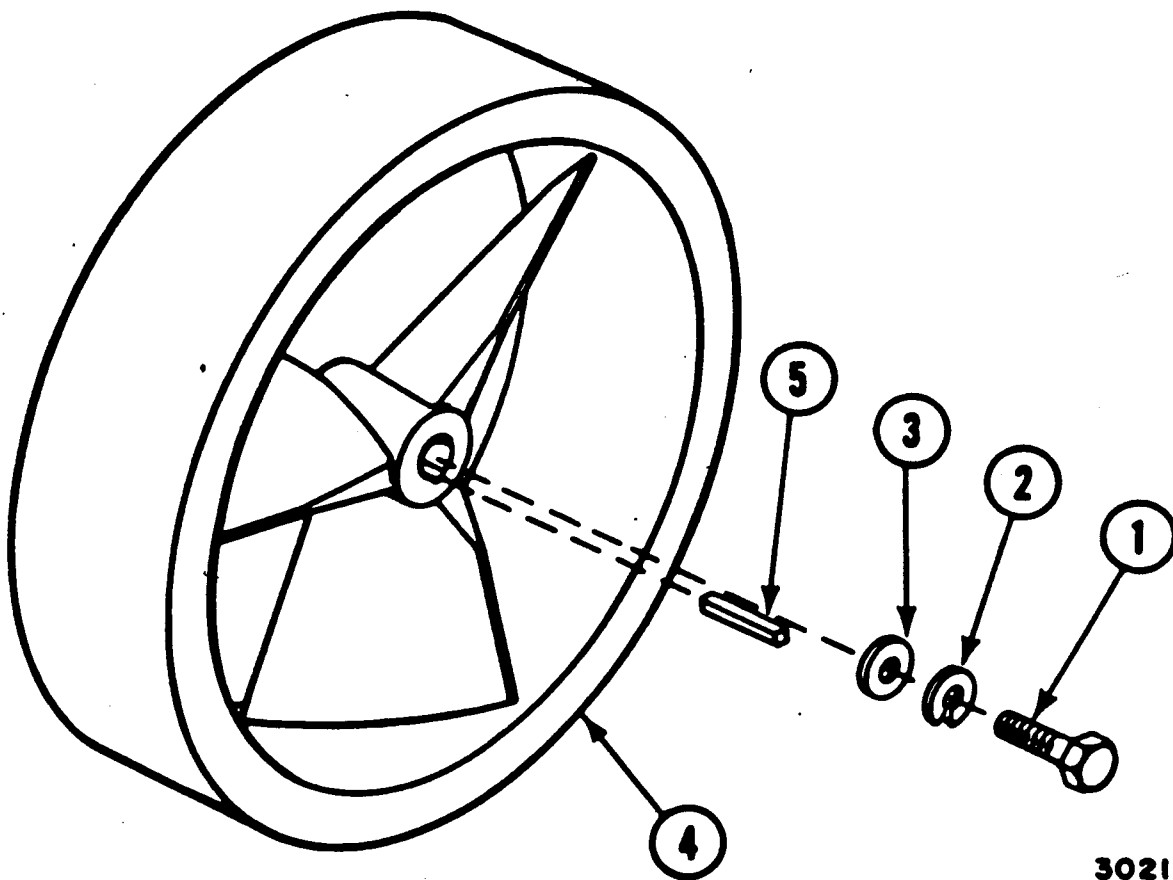
Series
400
440A

PART NUMBERS

STANDARD

GH9-741

Ref.	Part Description	Qty.					
1	SCREW, Cap	1	02-71				
2	WASHER, Lock	1	05-53				
3	WASHER, Flat	1	H20-585				
4	FLYWHEEL	1	H9-741				
5	KEY	1	09-130				
	DECAL, Rotation	1	H62-404				



3021

• Part number is same as in

GROUPS AND COMPONENTS

Group No. 11

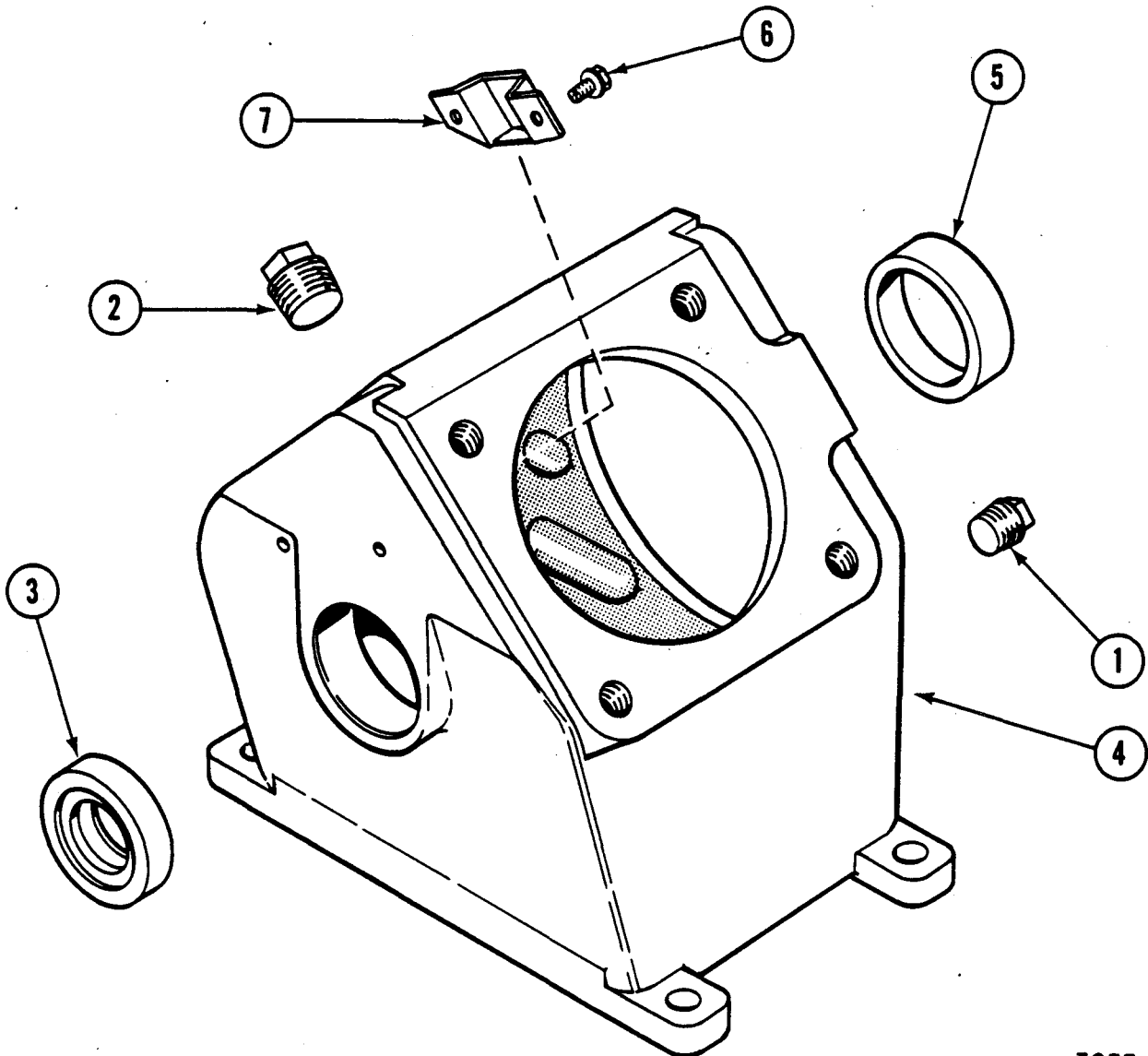
CRANKCASE

MODEL

Series
400
440A

PART NUMBERS

Ref.	Part Description	Qty.	STANDARD				
1	PLUG, Oil drain	1	011-3				
2	PLUG, Oil filler	1	011-5				
3	SEAL, Front oil	1	H125-266				
	CRANKCASE ASSEMBLY	1	AH100-263-1				
			Inc. A & B				
4	CRANKCASE	1	H100-263-1--A				
5	CUP, Bearing	1	H181-262--B				
6	SCREW, Self-tapping	2	H34-579-2				
7	BAFFLE, Crankcase breather	1	AH38-593				



3033

