

Specifications

GENERAL ENGINE SPECIFICATIONS

Item	Unit Of Measure	4039DF	4039TF	4045DF	4045TF
Number of Cylinders	—	4	4	4	4
Fuel	—	Diesel	Diesel	Diesel	Diesel
Bore	mm (in.)	106.5 (4.19)	106.5 (4.19)	106.5 (4.19)	106.5 (4.19)
Stroke	mm (in.)	110.0 (4.33)	110.0 (4.33)	127.0 (5.00)	127.0 (5.00)
Displacement	L (cu.in.)	3.9 (239)	3.9 (239)	4.5 (276)	4.5 (276)
Compression Ratio	—	17.8:1	17.8:1	17.8:1	17.2:1
Rated Speed:					
Std. Governor	RPM	2500	2500	2400	2400
3—5% Governor	RPM	1500/1800	1500/1800	1500/1800	1500/1800
Fast Idle Speed	RPM	2700	2700	2600	2600
Slow Idle Speed (factory)	RPM	800—850	800—850	800—850	800—850
Industrial Power Rating— (maximum intermittent) @ Rated Speed w/o Fan	kW (BHp)	80 (60)	110 (82)	85 (63)	115 (86)
Basic Weight (dry)	kg (lb)	422 (929)	437 (962)	474 (1043)	487 (1071)
Flywheel and Housing (SAE No.)	—	2,3,4	2,3,4	2,3,4	2,3,4
Injection Nozzles	mm	9.5	9.5	9.5	9.5
Fuel Filter Area	cm ² (in. ²)	5162/2581 (800/400)	5162/2581 (800/400)	5162/2581 (800/400)	5162/2581 (800/400)
Physical Dimensions:					
Width	mm (in.)	519 (20.4)	536 (21.1)	519 (20.4)	512 (20.1)
Height	mm (in.)	818 (32.2)	993 (39.1)	818 (32.2)	1029 (40.5)
Length	mm (in.)	844 (33.2)	869 (34.2)	844 (33.2)	869 (34.2)

See page 33 for engine oil crankcase capacities with filter change.

S11,OMSP,K1 -19-16NOV89

GENERAL ENGINE SPECIFICATIONS—CONTINUED

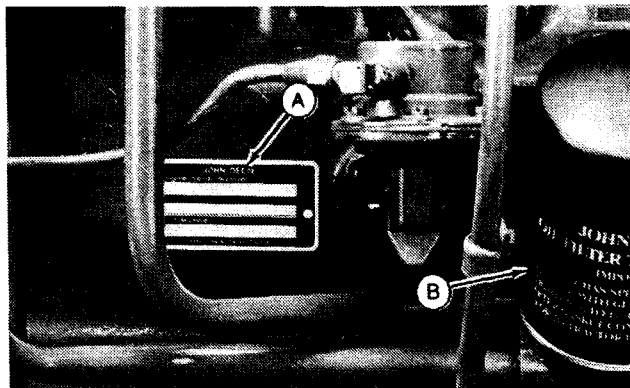
Item	Unit Of Measure	6059DF	6059TF	6068DF	6068TF
Number of Cylinders	—	6	6	6	6
Fuel Type	—	Diesel	Diesel	Diesel	Diesel
Cylinder Bore	mm (in.)	106.5 (4.19)	106.5 (4.19)	106.5 (4.19)	106.5 (4.19)
Engine Stroke	mm (in.)	110.0 (4.33)	110.0 (4.33)	127.0 (5.00)	127.0 (5.00)
Engine Displacement	L (cu.in.)	5.9 (359)	5.9 (359)	6.8 (414)	6.8 (414)
Compression Ratio	—	17.8:1	17.8:1	17.8:1	17.2:1
Rated Speed:					
Std. Governor	RPM	2500	2500	2400	2400
3—5% Governor	RPM	1500/1800	1500/1800	1500/1800	1500/1800
Fast Idle Speed	RPM	2700	2700	2600	2600
Slow Idle Speed (factory)	RPM	800—850	800—850	800—850	800—850
Industrial Power Rating— (maximum intermittent) @ Rated Speed w/o Fan	kW (BHp)	89 (120)	123 (165)	97 (130)	130 (175)
Flywheel and Housing (SAE No.)	—	2,3,4	2,3,4	2,3,4	2,3,4
Injection Nozzles	mm	9.5	9.5	9.5	9.5
Fuel Filter Area	cm ² (in. ²)	5162/2581 (800/400)	5162/2581 (800/400)	5162/2581 (800/400)	5162/2581 (800/400)
Basic Weight (dry)	kg (lb)	518 (1140)	525 (1155)	588 (1294)	602 (1324)
Physical Dimensions:					
Width	mm (in.)	552 (21.7)	519 (20.4)	560 (22.0)	513 (20.2)
Height	mm (in.)	936 (36.9)	1034 (40.7)	1132 (44.6)	1068 (42.0)
Length	mm (in.)	1118 (44.0)	1118 (44.0)	1119 (44.1)	1119 (44.1)

See page 33 for engine oil crankcase capacities with filter change.

S11,OMSP,L1 -19-16NOV89

ENGINE SERIAL NUMBER PLATE

Your engine's serial number plate (A) is located on right-hand side of cylinder block near the oil filter housing (B).



S11,OMSN,L -19-12JUN86

RG4904 -UN-15DEC88

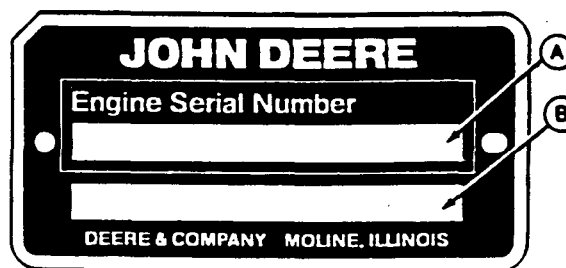
RECORD ENGINE SERIAL NUMBER

Your engine will have a serial number plate.

Record all of the numbers and letters found on your engine serial number plate in the spaces provided below.

This information is very important for repair parts or warranty information.

Engine Serial Number (A)

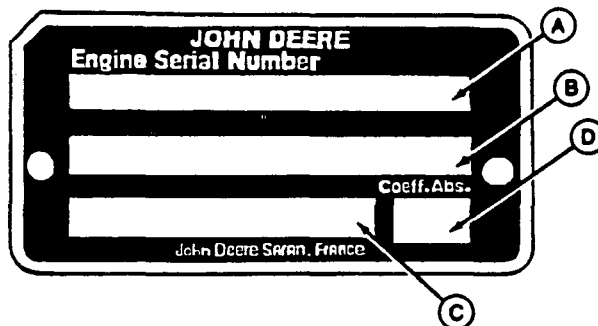


Dubuque Serial Number Plate

Application Data (B)

European Customer Model/Application Data (C)

Coefficient of Absorption Value (D)



Saran Serial Number Plate

RG5609 -UN-09JAN90

RG5610 -UN-09JAN90

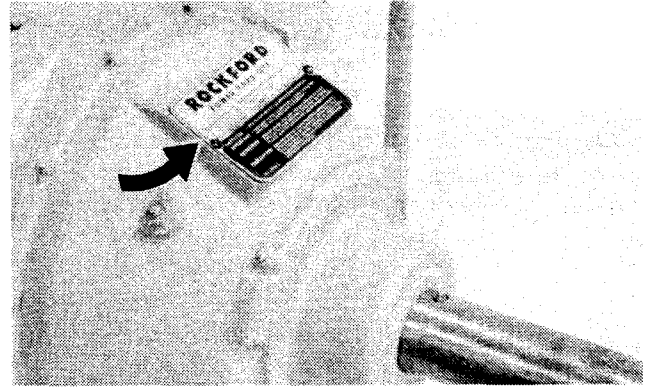
S55,OMSN,B -19-04JAN90

RECORD PTO SERIAL NUMBER

Serial number and model number are located on cover plate of PTO housing. Record the numbers in the following spaces:

Serial Number _____

Model Number _____



RG4622 -UN-15DEC88

S11,OMSN,N -19-10JUN86

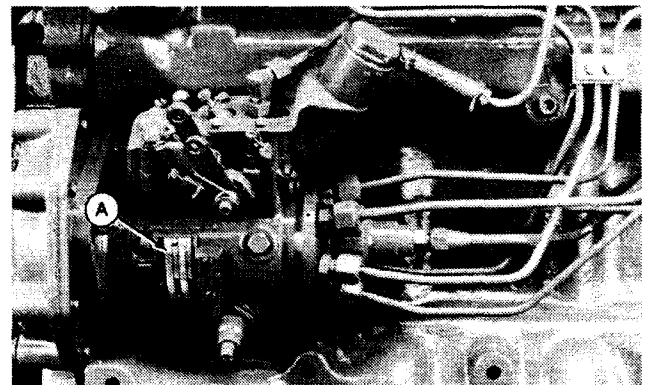
RECORD FUEL INJECTION PUMP MODEL NUMBER

Record the fuel injection pump model and serial information found on the serial number plate (A).

Model No. _____ RPM _____

Manufacturer's No. _____

Serial No. _____



RG4806 -UN-15DEC88

S11,OMSN,O -19-02JUL86

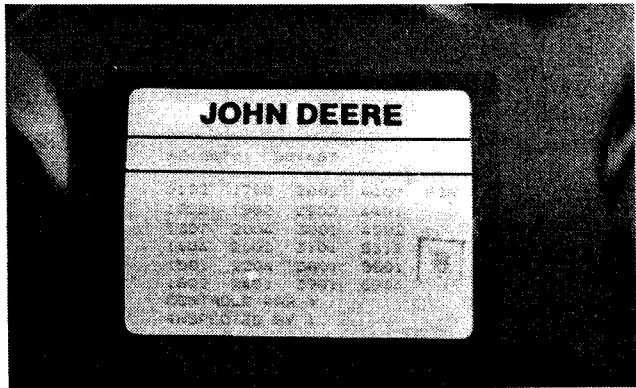
ENGINE OPTION CODES

In addition to the serial number plate, OEM engines have an engine option code label affixed to the rocker arm cover. These codes indicate which of the engine options were installed on your engine at the factory. When in need of parts or service, furnish your authorized servicing dealer or engine distributor with these numbers.

The first two digits of each code identify a specific group, such as alternator or radiator. The last two digits of each code identify one specific option provided on your engine, such as a 12-volt, 55-amp alternator.

If an engine is ordered without a particular component, the last two digits of that functional group option code will be nines. The following list shows only the first two digits of the code numbers. For future reference such as ordering repair parts, it is important to have these code numbers available. To ensure this availability, enter the third and fourth digits shown on your engine option code label in the spaces provided on the following pages.

NOTE: *Your engine option code label may not contain all option codes if an option has been added after the engine left the producing factory.*

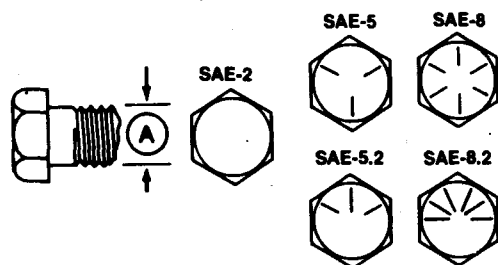


Specifications

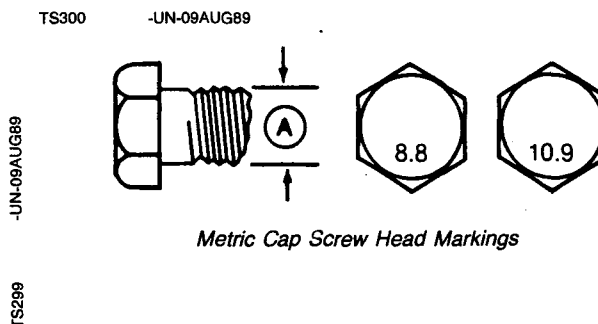
Option Codes	Description	Option Codes	Description
11 ____	Rocker Arm Cover	35 ____	Fuel Filter
12 ____	Oil Filler	37 ____	Fuel Transfer Pump
13 ____	Crankshaft Pulley	39 ____	Thermostat Housing
14 ____	Flywheel Housing	40 ____	Dipstick
15 ____	Flywheel	41 ____	Belt Driven Front Auxiliary Drive
16 ____	Injection Pump	43 ____	Air Inlet Heater
17 ____	Air Inlet	44 ____	Timing Gear Cover With Gears
19 ____	Oil Pan	45 ____	Balancers For 4-Cylinder Engines
20 ____	Water Pump	46 ____	Cylinder Block With Liners and Camshaft
21 ____	Thermostat Cover	52 ____	Accessory Gear Drive
22 ____	Thermostat	55 ____	Shipping Stand
23 ____	Fan Drive	56 ____	Paint Option
24 ____	Fan Belt	59 ____	Oil Cooler and Filter
28 ____	Exhaust Manifold	62 ____	Alternator Mounting
29 ____	Ventilator System	64 ____	Exhaust Elbow
30 ____	Starting Motor	65 ____	Turbocharger
31 ____	Alternator	69 ____	Engine Serial Number Plate

S11,OMSN,Q -19-17NOV89

CAP SCREW TORQUE VALUES



Inch Cap Screw Head Markings



Metric Cap Screw Head Markings

INCH CAP SCREW TORQUE VALUES

Bolt Diameter Wrench (A) Size	Cap Screw Grade							
	SAE 2		SAE 5		SAE 8			
	N-m	lb-ft	N-m	lb-ft	N-m	lb-ft	N-m	lb-ft
1/4" 7/16"	7 (5)	11 (8)	16 (12)					
5/16" 1/2"	14 (10)	23 (17)	33 (24)					
3/8" 9/16"	24 (18)	41 (30)	54 (40)					
7/16" 5/8"	41 (30)	68 (50)	95 (70)					
1/2" 3/4"	61 (45)	102 (75)	142 (105)					
9/16" 13/16"	88 (65)	142 (105)	203 (150)					
5/8" 15/16"	122 (90)	197 (145)	278 (205)					
3/4" 1-1/8"	217 (160)	353 (260)	495 (365)					
7/8" 1-5/16"	224 (165)	563 (415)	800 (590)					
1" 1-1/2"	332 (245)	848 (625)	1193 (880)					
1-1/4" 1-7/8"	665 (490)	1492 (1100)	2393 (1765)					

CAUTION: Use only metric tools on metric hardware. Other tools may not fit properly. They may slip and cause injury.

DO NOT use these values if a different torque value or tightening procedure is listed for a specific application. Torque values listed are for general use only. Check tightness of cap screws periodically.

Shear bolts are designed to fail under predetermined loads. Always replace shear bolts with identical grade.

METRIC CAP SCREW TORQUE VALUES

Bolt Diameter Wrench (A) Size	Markings on Cap Screw Heads							
	8.8		10.9					
	N-m	lb-ft	N-m	lb-ft	N-m	lb-ft	N-m	lb-ft
5 mm 8 mm	6 (4.5)	9 (6.5)						
6 mm 10 mm	10 (7.5)	15 (11)						
8 mm 13 mm	25 (18)	35 (26)						
10 mm 16 mm	50 (37)	75 (55)						
12 mm 18 mm	85 (63)	130 (97)						
16 mm 24 mm	215 (159)	315 (232)						
20 mm 30 mm	435 (321)	620 (457)						
24 mm 36 mm	750 (553)	1070 (789)						
30 mm 46 mm	1495 (1103)	2130 (1571)						

Fasteners should be replaced with the same or higher grade. If higher grade fasteners are used, these should only be tightened to the strength of the original.

Make sure fastener threads are clean and you properly start thread engagement. This will prevent them from failing when tightening.

Tighten plastic insert or crimped steel-type lock nuts to approximately 50 percent of amount shown in chart. Tighten toothed or serrated-type lock nuts to full torque value.

ARE WE MEETING YOUR NEEDS?

This operator's manual was written by Deere Power Systems Group's Service Publication Department.

In our effort to meet customer needs, we invite you to mail comments on this manual to the following address:

Deere Power Systems Group
P.O. Box 5100
Waterloo, IA. 50704-5100
Attn: Service Publications

Call your authorized servicing dealer or engine distributor if you have problems or need service.



S55,OMSP,F -19-08JAN90

RG5422 -1JN-15DEC88

Lubrication and Maintenance Records

USING LUBRICATION AND MAINTENANCE RECORDS

1. Keep a record of the number of hours you run your engine.
2. Check your record regularly to learn when your engine needs service.
3. DO ALL the services within an interval section. Write the number of hours (from your service records) and the date in the spaces provided.

S55,2000,IK -19-020888

SERVICE INTERVALS

SERVICE AS REQUIRED

- Service air cleaner

EVERY 10 HOURS OR DAILY (PRESTARTING)

- Check engine oil level
- Check coolant level
- Lubricate PTO release bearing
- Check air cleaner dust unloader valve, if equipped

EVERY 50 HOURS

- Lubricate PTO clutch shaft bearings

ENGINE BREAK-IN SERVICE (UP TO 100 HOURS)

- Change engine oil and filter

EVERY 250 HOURS

- Change engine oil and filter
- Service batteries
- Check tension of fan and alternator belts
- Inspect fire extinguisher
- Check PTO clutch adjustment

EVERY 600 HOURS

- Lubricate PTO clutch internally
- Clean crankcase vent tube
- Adjust engine valve clearance (every 1200 hours thereafter)
- Check air intake hoses
- Replace fuel filter element

EVERY 1200 HOURS

- Adjust engine valve clearance
- Check and adjust engine speeds
- Check fuel injection system
- Inspect turbocharger
- Check crankshaft vibration damper

ANNUALLY

- Replace air cleaner elements
- Check air intake system
- Check cooling system piping

EVERY 2 YEARS

- Drain, flush, and refill cooling system
- Replace thermostats
- Add liquid coolant conditioner, if desired
- Pressure test cooling system

SERVICE AS REQUIRED

- Service air cleaner

Hours									
Date									
Hours									
Date									
Hours									
Date									
Hours									
Date									

RW3845L -19-28NOV89

- Check crankshaft vibration damper

RW3846L -19-14MAR89

Hours									
Date									

S11,OMMR,Z -19-11JUN86

DAILY (PRESTARTING) OR EVERY 10 HOURS SERVICE

NOTE: Refer to Prestarting Checks section for detailed procedures.

- Check engine oil level.
- Check coolant level.
- Lubricate PTO release bearing
- Check air cleaner dust unloader valve.

S11,OMMR,I1 -19-22NOV89

50 HOUR SERVICE

NOTE: Refer to Lubrication and Maintenance section for detailed procedures.

- Lubricate PTO clutch shaft bearings.

RW3846L -19-14MAR89

Hours									
Date									

•

RW3846L -19-14MAR89

Hours									
Date									

S11,OMMR,A1 -19-22NOV89

100 HOUR SERVICE

- Service batteries

RW3846L -19-14MAR89

Hours									
Date									

•

RW3846L -19-14MAR89

Hours									
Date									

S11,OMMR,AA -19-22NOV89

250 HOUR SERVICE

- Change engine oil and filter.

Hours									
Date									
Hours									
Date									
Hours									
Date									
Hours									
Date									

RW3845L -19-28NOV89

- Service fire extinguisher

Hours									
Date									
Hours									
Date									
Hours									
Date									
Hours									
Date									

RW3845L -19-28NOV89

- Check and adjust alternator and fan belt tensions

Hours									
Date									
Hours									
Date									
Hours									
Date									
Hours									
Date									

RW3845L -19-28NOV89

250 HOUR SERVICE—CONTINUED

- Lubricate PTO clutch interval levers and linkage

Hours									
Date									
Hours									
Date									
Hours									
Date									
Hours									
Date									

- Check PTO clutch adjustment

Hours									
Date									
Hours									
Date									
Hours									
Date									
Hours									
Date									

•

Hours									
Date									
Hours									
Date									
Hours									
Date									
Hours									
Date									

Lubrication and Maintenance Records

600 HOUR SERVICE

- Clean crankcase vent tube

RW3846L -19-14MAR89

Hours									
Date									

- *Initial valve clearance adjustment.

RW3846L -19-14MAR89

Hours									
Date									

- Check air intake hoses.

RW3846L -19-14MAR89

Hours									
Date									

- Clean fuel strainer (if equipped)

RW3846L -19-14MAR89

Hours									
Date									

- Replace fuel filter

RW3846L -19-14MAR89

Hours									
Date									

**Have your authorized servicing dealer or engine distributor adjust valve clearance after the first 600 hours of operation. Thereafter, have the valve clearance adjusted at 1200 hour intervals.*

S11,OMMR,AD -19-18JUL86

1200 HOUR SERVICE

- Have your authorized servicing dealer or engine distributor check and adjust engine speeds

RW3846L -19-14MAR89

Hours									
Date									

- Have your authorized servicing dealer or engine distributor adjust valve clearance

RW3846L -19-14MAR89

Hours									
Date									

- Have your authorized servicing dealer or engine distributor check fuel injection system

RW3846L -19-14MAR89

Hours									
Date									

- Have your authorized servicing dealer or engine distributor inspect turbocharger

RW3846L -19-14MAR89

Hours									
Date									

ANNUAL SERVICE

- Replace air cleaner elements

RW3846L -19-14MAR89

Hours									
Date									

- Check air intake system

RW3846L -19-14MAR89

Hours									
Date									

- Check cooling system

RW3846L -19-14MAR89

Hours									
Date									

- Check crankshaft vibration damper. Replace every 5 years or 4500 hours.

RW3846L -19-14MAR89

Hours									
Date									

S11,OMMR,AE -19-02JUL86

Lubrication and Maintenance Records

SERVICE EVERY TWO YEARS

- Flush cooling system

RW3846L -19-14MAR89

Hours									
Date									

- Change thermostats

RW3846L -19-14MAR89

Hours									
Date									

- Have your authorized servicing dealer or engine distributor test radiator and cap

RW3846L -19-14MAR89

Hours									
Date									

S11,OMMR,AF -19-11JUN86

ENGINE TUNE-UP/1200 HOUR OR 2 YEAR

RW3846L -19-14MAR89

Hours									
Date									

NOTE:

S11,OMMR,AG -19-04JUN87

Index

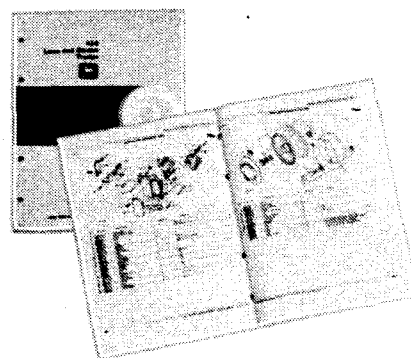
	Page		Page	
A		Engine oil level		9
Accessory gear drive limitations	11	Engine oil, diesel	20	
Acid burns	31	Engine serial number	68	
Air cleaner	26, 44	Engine speeds	14, 41	
Air intake system	39	Engine starting	11	
Alternator belts	34, 60	Engine storage	63	
Annual service	44, 82	Engine troubleshooting	51	
		Engine tune-up	50	
		Engine warm-up	13	
B		F		
Batteries	30	Fan belts	34, 60	
Battery acid burns	31	Fire extinguisher	36	
Battery explosion	30	Fuel filters	10	
Belts, fan	34, 60	Fuel injection pump model no.	69	
Bleed fuel system	58	Fuel injection system	43, 58	
Booster battery charger	16	Fuel storage	18	
Break-in service	7	Fuel system service	58	
		Fuel tank	19	
C		Fuel Filter	40	
Cap screw torque values	72	Fuses	61	
Codes, Option	70			
Cold weather operating	21	G		
Controls	6	Gauges	6	
Coolant	9, 22, 48	Governors	13	
Coolant conditioner	24	Grease, general purpose	21	
Coolant level	9			
Cooling system	45	H		
Cooling system service	45	Hand throttle	6	
Crankcase vent tube	37	High-pressure fluids	3	
Crankshaft vibration damper	43	Hour meter	6	
D		I		
Damper, crankshaft vibration	43	Idling engine	15	
Diesel fuel	17	Inspect alternator belts	34, 60	
Diesel Fuel	2	Instruments	6	
Do Not Modify fuel system	57			
		L		
E		Lubricant alternatives	21	
Electrical system troubleshooting	55	Lubricant storage	22	
Engine break-in	7	Lubricants, synthetic	21	
Engine coolant	9, 22, 48	Lubrication and maintenance records	76	
Engine coolant conditioner	24	Lubrication, periodic, Annual service	82	
Engine idling	15			
Engine oil	7, 9, 32			
Engine oil filter	32			

	Page		Page
Lubrication, periodic, Daily or every 10 hours	76	S	
Lubrication, periodic, Service as required	26, 76	Safety	1
Lubrication, periodic, Two-year service	83	Serial Number	68
Lubrication, periodic, 100-hour	77	Service, battery	30
Lubrication, periodic, 1200-hour	81	Service, information	57
Lubrication, periodic, 250-hour	32, 78	Service, periodic	25
Lubrication, periodic, 50-hour	29, 77	Specifications	66
Lubrication, periodic, 600-hour	37, 80	Specifications, fuel	17
		Speeds, engine	14, 41
M		Standby power units	14
Maintenance, initial, 600-hour	37	Starter	62
Maintenance, periodic, annual	45	Starting fluid	2
Maintenance, periodic, Annual service	44	Starting, engine	11
Maintenance, periodic, Two-year	49	Stopping engine	15
Maintenance, periodic, Two-year service	46	Storage, engine	63
Maintenance, periodic, 1200-hour	41, 42, 43	Storage, fuel	18
Maintenance, periodic, 250-hour	30, 34, 35, 36	Synthetic lubricants	21
Maintenance, periodic, 600-hour	37, 39, 40		
Manually operated starting aids	2	T	
		Tachometer	6
O		Temperature gauge (coolant)	6
Oil pressure gauge	6	Thermostats	46
Oil, engine	7, 9, 32	Torque values, cap screw	72
Oil, engine, diesel	20	Troubleshooting	51, 55
Operating the engine	11	Tune-up	50
Option Codes	70	Turbocharger	43
P		V	
Periodic service	25	Valve clearance	37
Power take-off (PTO)	11, 15, 29, 35, 37, 61	Valve Clearance	42
Prestarting checks	9		
Product Identification	1	W	
Production number	68	Warm-up engine	13
PTO clutch	11, 15, 29, 35, 37, 61	Wiring diagrams	62
PTO serial number	69		
PTO shaft	61		
PTO, Safety	4		
R			
Radiator	49		

John Deere Service Literature Available

PARTS CATALOG

The parts catalog lists service parts available for your machine with exploded view illustrations to help you identify the correct parts. It is also useful in assembling and disassembling.



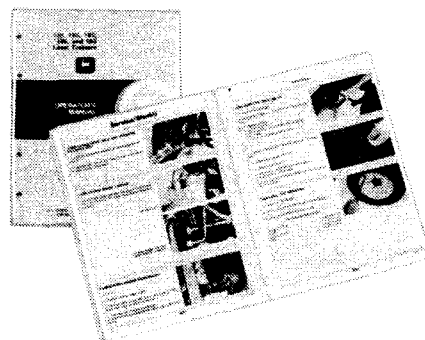
O53,PARTS -19-27NOV85

TS189 -UN-17JAN89

OPERATOR'S MANUAL

The operator's manual provides safety, operating, maintenance, and service information about John Deere machines.

An extra copy of the operator's manual is important if the copy furnished with your machine is misplaced.



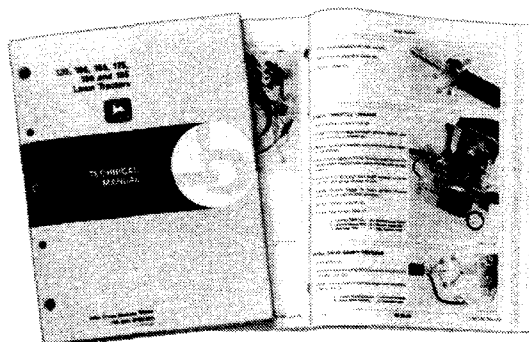
O53,OM -19-27NOV85

TS190 -UN-17JAN89

TECHNICAL AND SERVICE MANUALS

Technical and service manuals are service guides for your machine. Included in the manual are specifications, diagnosis, and adjustments. Also illustrations of assembly and disassembly procedures, hydraulic oil flows, and wiring diagrams.

Component technical manuals are required for some products. These supplemental manuals cover specific components.

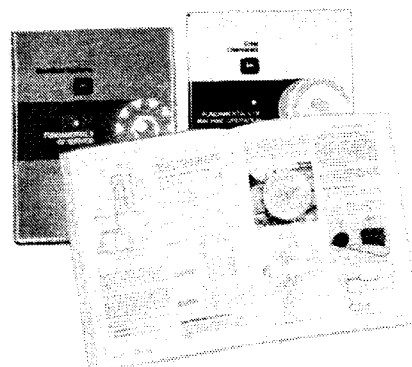


O53,TM -19-21DEC87

TS224 -UN-17JAN89

FMO AND FOS MANUALS

These are basic manuals covering most types and makes of machinery. FMO manuals tell you how to OPERATE agricultural machinery; FOS manuals tell you how to SERVICE machine systems. Each manual starts with basic theory and is fully illustrated with colorful diagrams and photographs. Both the "whys" and "hows" of adjustments and repairs are covered in this reference library.



O53,FMOFOS -19-27NOV85

TS195 -UN-02DEC88

John Deere Service Literature Available

John Deere Distribution Service Center
Department S/P
1400-13 St., East Moline, IL. 61244-1493

Please ship to . . .

Name _____

Address _____

City _____ State _____

Zip _____ Phone _____

To order these publications, fill out this form and mail it with payment to the address given. Make checks payable to Deere & Co. Service Publications. Please allow three weeks for delivery.

If you want manuals or catalogs for equipment not shown on this list, list the model number, serial number, and name of the product.

Title	Order Number	Price Each	x Quantity	= Total
300 Series Liter Engines				
Parts Catalog—4039 and 4045 Engines	PC-2305	\$ 13.50	x	=
Operator's Manual	OM-RG18293	4.50	x	=
Component Technical Manuals:				
—Engine Accessories	CTM-11	34.90	x	=
FMO Manual—Tractors	FMO10102B	19.15	x	=
FMO Manual—Tillage	FMO11102B	20.35	x	=
FMO Manual—Planting	FMO12102B	19.95	x	=
FMO Manual—Crop Chemicals	FMO13102B	23.95	x	=
FMO Manual—Hay & Forage Harvesting	FMO14103B	23.95	x	=
FMO Manual—Combine Harvesting	FMO15103B	20.35	x	=
FMO Manual—Preventive Maintenance	FMO16103B	20.35	x	=
FMO Manual—Machine Safety	FMO18103B	20.35	x	=
FOS Manual—Hydraulics	FOS1004B	13.15	x	=
FOS Manual—Electrical Systems	FOS2005B	15.85	x	=
FOS Manual—Engines	FOS3006B	15.55	x	=
FOS Manual—Power Trains	FOS4005B	11.80	x	=
FOS Manual—Welding	FOS5206B	11.95	x	=
FOS Manual—Belts and Chains	FOS5304B	6.50	x	=
FOS Manual—Bearings and Seals	FOS5404B	8.65	x	=
FOS Manual—Tires and Tracks	FOS5506B	8.10	x	=
FOS Manual—Mowing and Spraying Equipment	FOS5604B	5.90	x	=
FOS Manual—Air Conditioning	FOS5705B	9.60	x	=
FOS Manual—Fuels, Lubricants & Coolants	FOS5806B	8.60	x	=
Conservation Farming	FC10101B	19.15	x	=
Machinery Maintenance	FMW10102B	17.10	x	=
Farm Business Management	FBM10102B	19.75	x	=
Machinery Management	FBM17103B	19.75	x	=
1-in. 3-Ring Binder (400 pages max.)	SX2062	2.10	x	=
1-1/2-in. 3-Ring Binder (600 pages max.)	SX2063	2.70	x	=
1—1-1/2-in. 3-Post Binder (600 pages max.)	SX2066	7.50	x	=
2—3-1/2-in. 3-Post Binder (1400 pages max.)	SX2064	8.75	x	=
Catalogs of Available Service Publications:				
Agricultural Product Publications	CPC1703	No Charge		
Industrial Product Publications	CPC1852	No Charge		
Consumer Product Publications	CPC1704	No Charge		
		Subtotal		

Publication Total	Shipping, Handling & Insurance
\$.50 to \$ 14.99	\$ 3.00
15.00 to 29.99	4.00
30.00 to 49.99	5.50
50.00 to 74.99	7.00
75.00 to 99.99	8.50
100.00 to 249.99	12.50
250.00 and Over	22.00

Illinois state residents add 6.25%; Iowa residents add 4% for retail occupation tax or show tax exemption number.

Shipping, Handling, & Insurance

Check or money order in U.S. Dollars enclosed Total
(Do not send cash or stamps)

Prices subject to change without notice.
SP-319 Aug-89

S11,SERLIT,L -19-27NOV89

John Deere Service Keeps You On the Job

JOHN DEERE PARTS

We help minimize downtime by putting genuine John Deere parts in your hands in a hurry.

That's why we maintain a large and varied inventory—to stay a jump ahead of your needs.



O53,IBC,A -19-19AUG88

TS100 -UN-23AUG88

THE RIGHT TOOLS

Precision tools and testing equipment enable our Service Department to locate and correct troubles quickly . . . to save you time and money.



O53,IBC,B -19-03SEP85

TS101 -UN-23AUG88

WELL-TRAINED TECHNICIANS

School is never out for John Deere service technicians.

Training schools are held regularly to be sure our personnel know your equipment and how to maintain it.

Result?

Experience you can count on!



O53,IBC,C -19-03SEP85

TS102 -UN-23AUG88

PROMPT SERVICE

Our goal is to provide prompt, efficient care when you want it and where you want it.

We can make repairs at your place or at ours, depending on the circumstances: see us, depend on us.

JOHN DEERE SERVICE SUPERIORITY: We'll be around when you need us.



O53,IBC,D -19-03SEP85

TS103 -UN-23AUG88