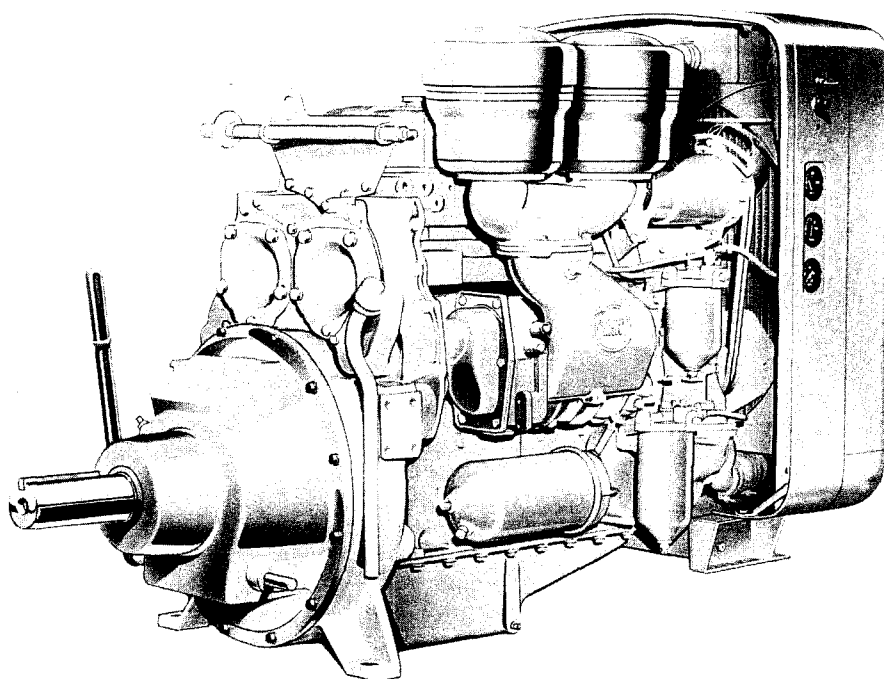


DETROIT DIESEL

MODEL

4-53	5044-7101
	5044-7201



Typical Model 5044-7101



A Power Product of General Motors



SPECIFICATIONS

	4-53 2 Valve	4-53 4 Valve
Model	5044-7101	5044-7201
Engine Type	Two Cycle	Two Cycle
No. of Cylinders	4	4
Bore and Stroke	3 7/8 in. x 4 1/2 in.	3 7/8 in. x 4 1/2 in.
Two Cycle Displacement (Every Downstroke a Powerstroke)	212 cu. in.	212 cu. in.
Maximum Brake Horsepower	—	130 at 2800 rpm
Rated Brake Horsepower	108 at 2200 rpm	123 at 2500 rpm
Continuous Brake Horsepower	87 at 2200 rpm	87 at 2200 rpm
Torque at 1000 rpm	278 lb. ft.	273 lb. ft.
Net Weight (Dry) with Standard Equipment	1370 lbs.	1370 lbs.

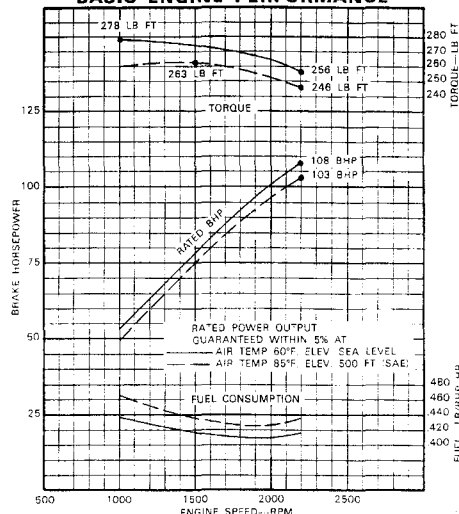
STANDARD EQUIPMENT

Air Inlet Housing—Manual shutdown with 50" control cable
 Air Cleaner—Direct mounted, oil bath
 Engine Mounts—Pedestal type, SAE #4
 Exhaust Connections—Exhaust manifold and exhaust outlet flange
 Fan—22"—5 blade, suction
 Flywheel—SAE #4 for 10" clutch
 Flywheel Housing—SAE #4
 Generator—12 volt, 25 amp
 Governor—Variable speed with throttle controls
 Injectors—Cam-operated Unit Type
 Instrument Panel
 Oil Pan and Oil Distribution System—Stamped oil pan for 10° inclination
 Power Take-Off—Single plate, 10" clutch
 Radiator and Shell—Short hoods
 Starting Equipment—12 volt, Sprag clutch

OPTIONAL AND EXTRA EQUIPMENT AVAILABLE

PERFORMANCE

MODEL 5044-7101
WITH S45 INJECTORS
BASIC ENGINE PERFORMANCE



Rating Explanation

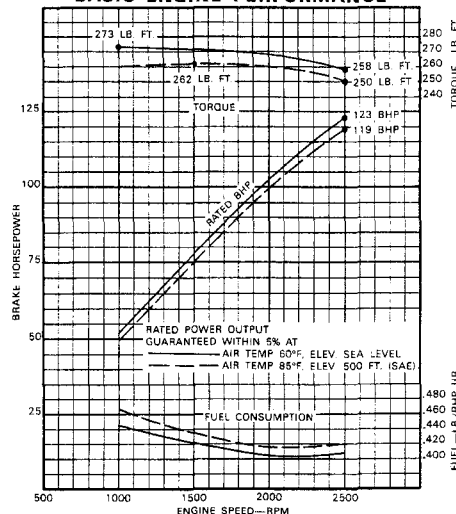
RATED BHP is the power rating for variable speed and load applications where full power is required intermittently. Performance may be derated to improve fuel economy and extend engine life.

CONTINUOUS BHP is the power rating for applications operating under a constant load and speed for long periods of time.

FUEL CONSUMPTION CURVE shows fuel used in pounds per BHP hour.

PIECE RATINGS do not include power requirements for accessories and standard equipment.

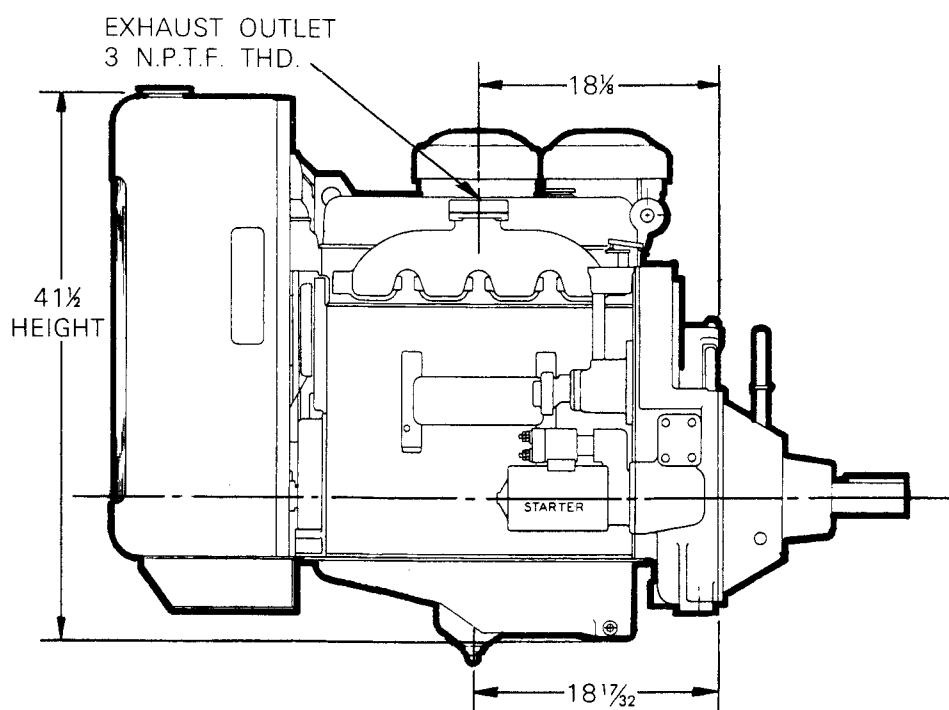
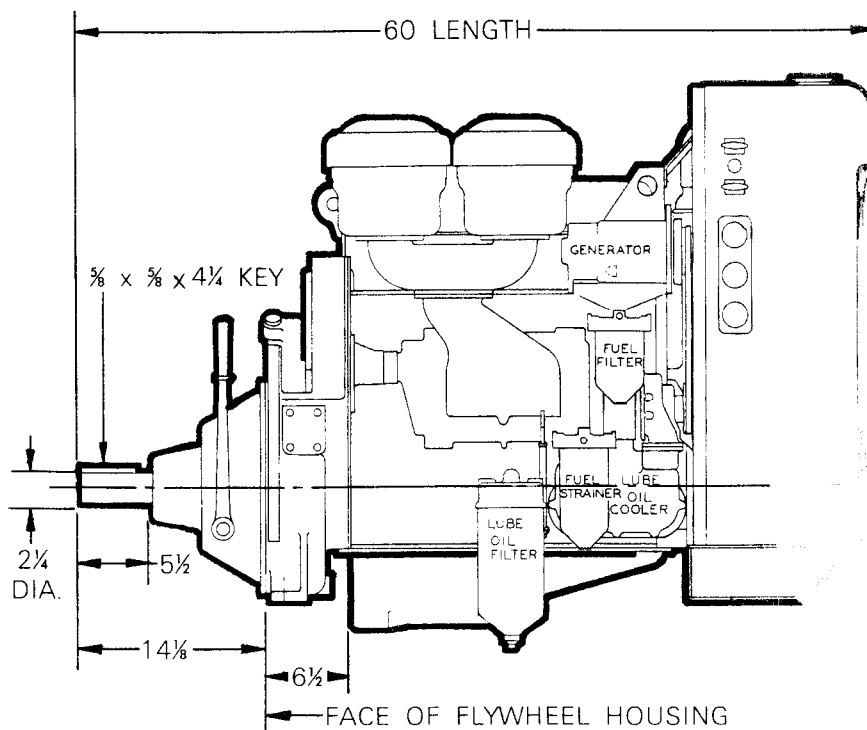
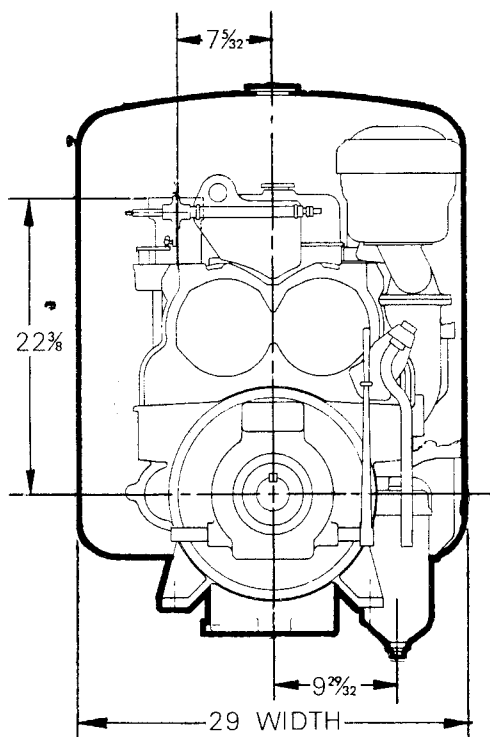
MODEL 5044-7201
WITH S45 INJECTORS
BASIC ENGINE PERFORMANCE



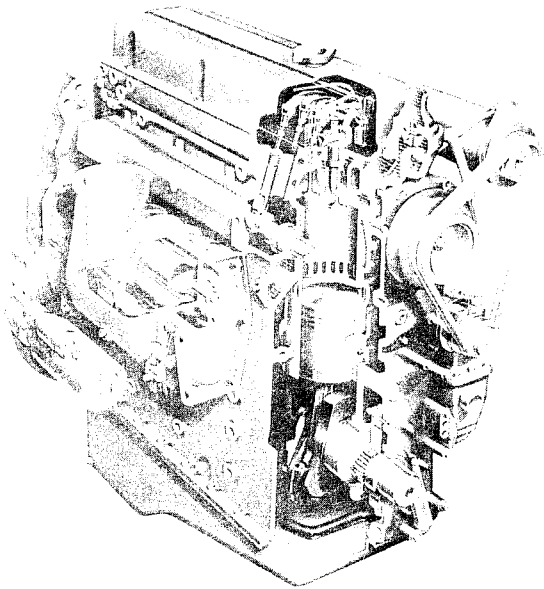
For complete engine specifications for your particular application, see your authorized Detroit Diesel representative.

PRINCIPAL DIMENSIONS

5044-7101
5044-7201



DETROIT DIESEL FAMILY OF ENGINES ADVANTAGES



Rugged, precision construction

- Laminated metal compression gaskets and synthetic rubber water and oil seals provide a longer-lived, leakproof bond between the cylinder head and block. The resulting metal-to-metal contact gives better heat transfer, preventing head cracking.
- Distortion-resistance is built into the cast iron cylinder head. Hardened valve seats are pressed into the head for proper valve seating and longer head and valve life.
- Long life, resistance to deflection and precise performance are accomplished by the drop-forged camshaft with hardened cams and journals.
- Easily replaceable, heat-treated cast iron cylinder liners provide a

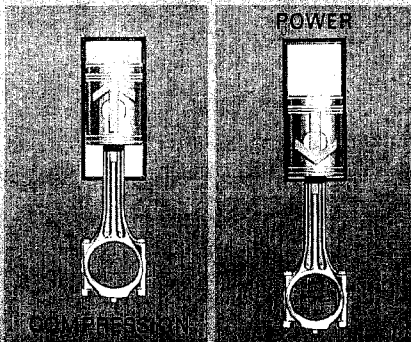
hard, scuff-resistant wearing surface, lengthening intervals between overhauls.

■ The pistons are ribbed for cooling and strength and tin-plated for superior oil retention, giving longer life. Rings are of break-resistant, chrome-plated steel.

■ Durability of connecting rods is provided by drop-forged steel construction. Rifle-drilled oil passages provide piston pin lubrication and spray cooling of the piston under-head.

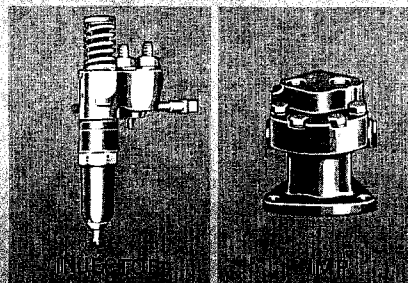
■ The crankshaft is a drop-forged, induction-hardened unit giving maximum strength and better wear. It is statically and dynamically balanced for smooth operation.

Two cycle design



Each cylinder performs the four functions of intake, compression, power and exhaust in one crankshaft revolution. Every piston downstroke is a powerstroke. This design makes Detroit Diesels lightest in weight, smallest in size and fastest in acceleration of all diesels. Work is done faster, more economically.

Unit injector fuel system



The Unit Injector fuel system provides maximum fuel economy from fast, complete combustion and affords excellent serviceability because of its simple, efficient design. Cam-actuated Unit Injectors meter, pressurize, atomize and inject the fuel in one precise operation. A simple low-pressure transfer pump circulates fuel through the lines, filters and injectors.

Unmatched parts interchangeability

Only Detroit Diesel builds engines with maximum parts interchangeability (up to 70% within a Series). This means that parts are readily available, inventories can be held to a minimum, and parts cost less as a benefit of volume production.

World-Wide sales, parts and service

Detroit Diesels are sold, installed and serviced by a world-wide network of over 1400 distributors and dealers. They are experienced "engine people" who know and understand your problems and are equipped to give you complete service. You can count on dependable parts and reliable service if you own a Detroit Diesel engine.



DETROIT DIESEL ENGINE DIVISION

GENERAL MOTORS CORPORATION ■ 13400 West Outer Drive Detroit, Michigan, 48228
IN CANADA: DIESEL DIVISION, GENERAL MOTORS OF CANADA LIMITED ■ LONDON, ONTARIO