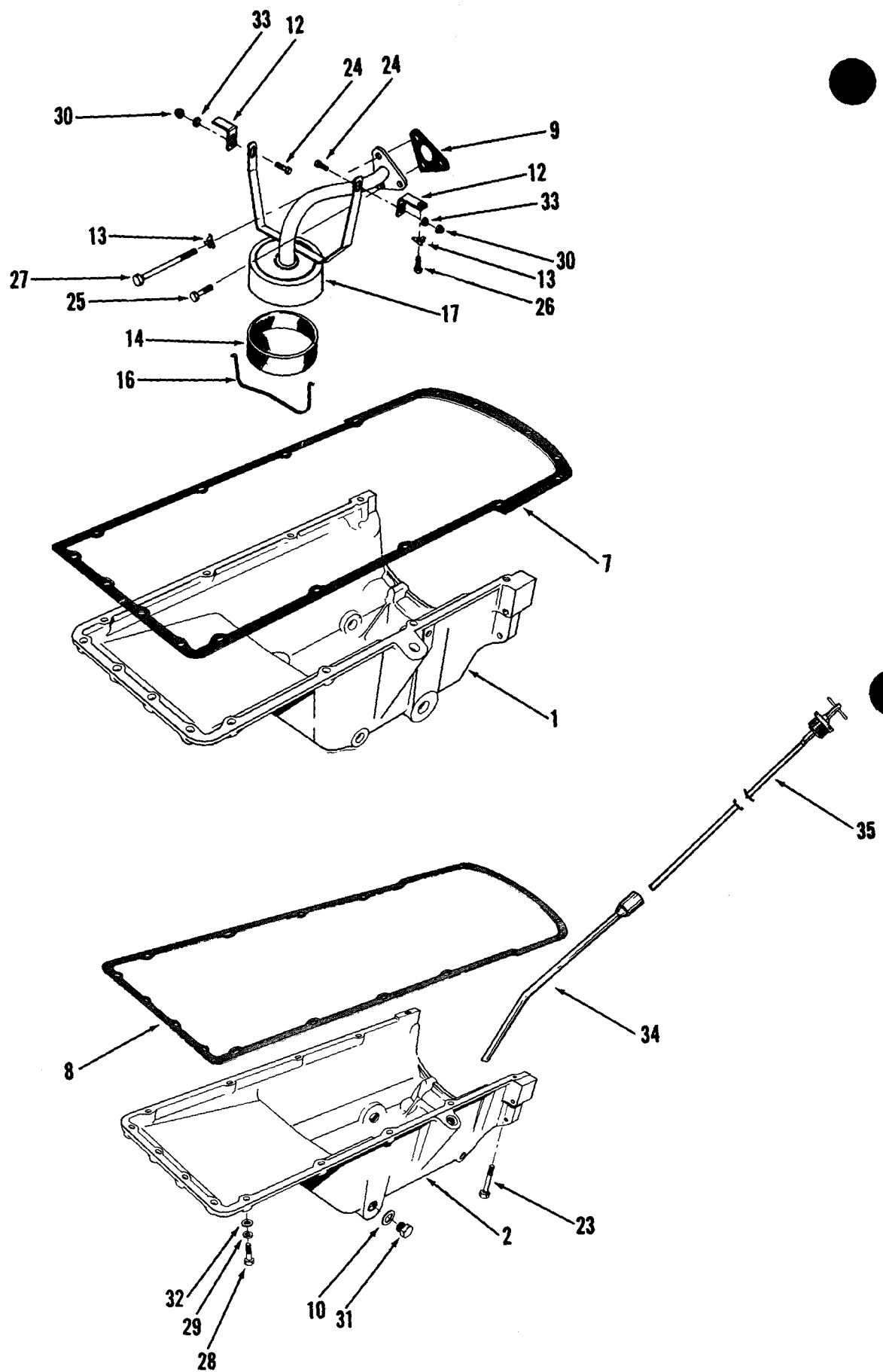


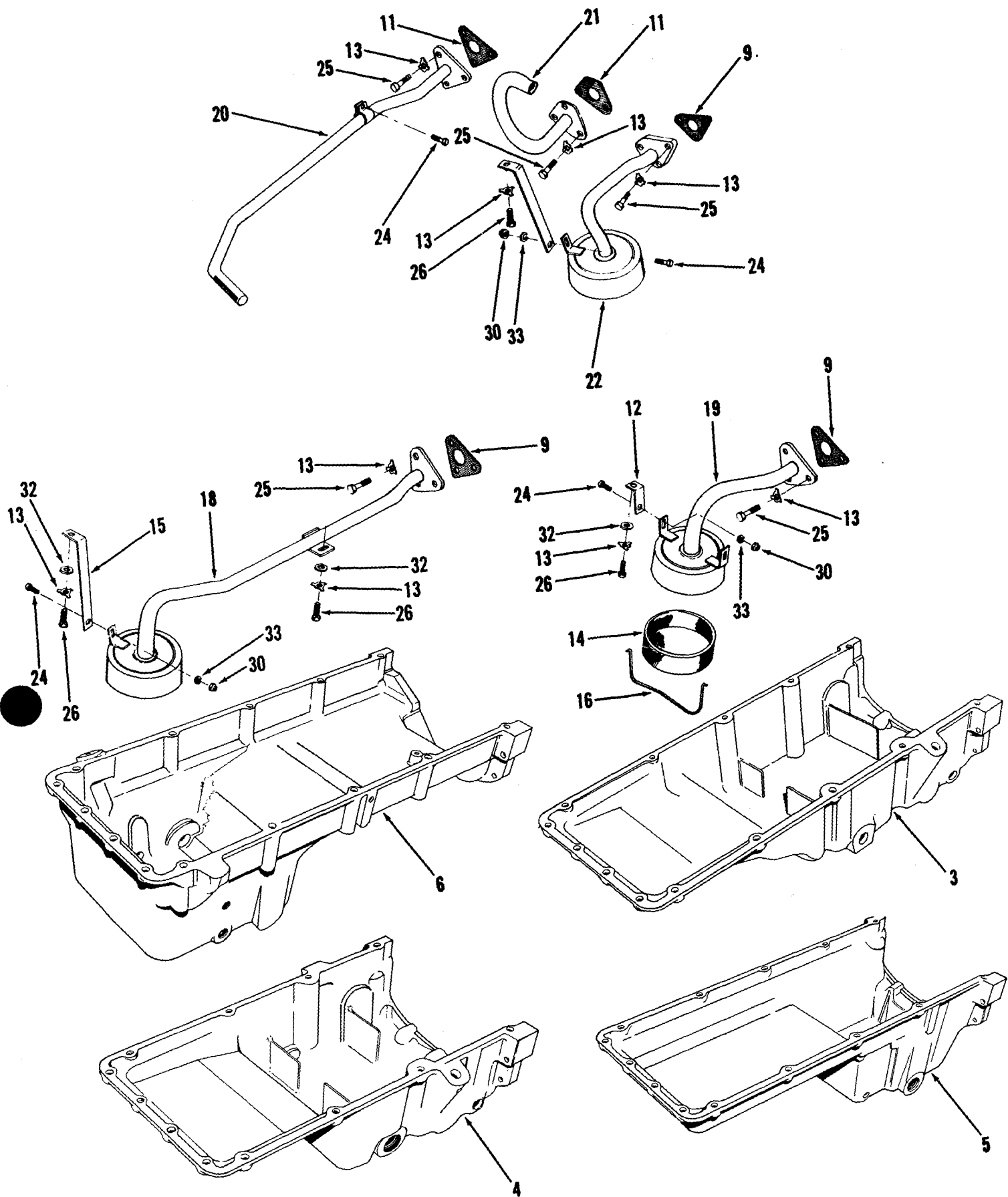
# Group 07

## *lubricating system*

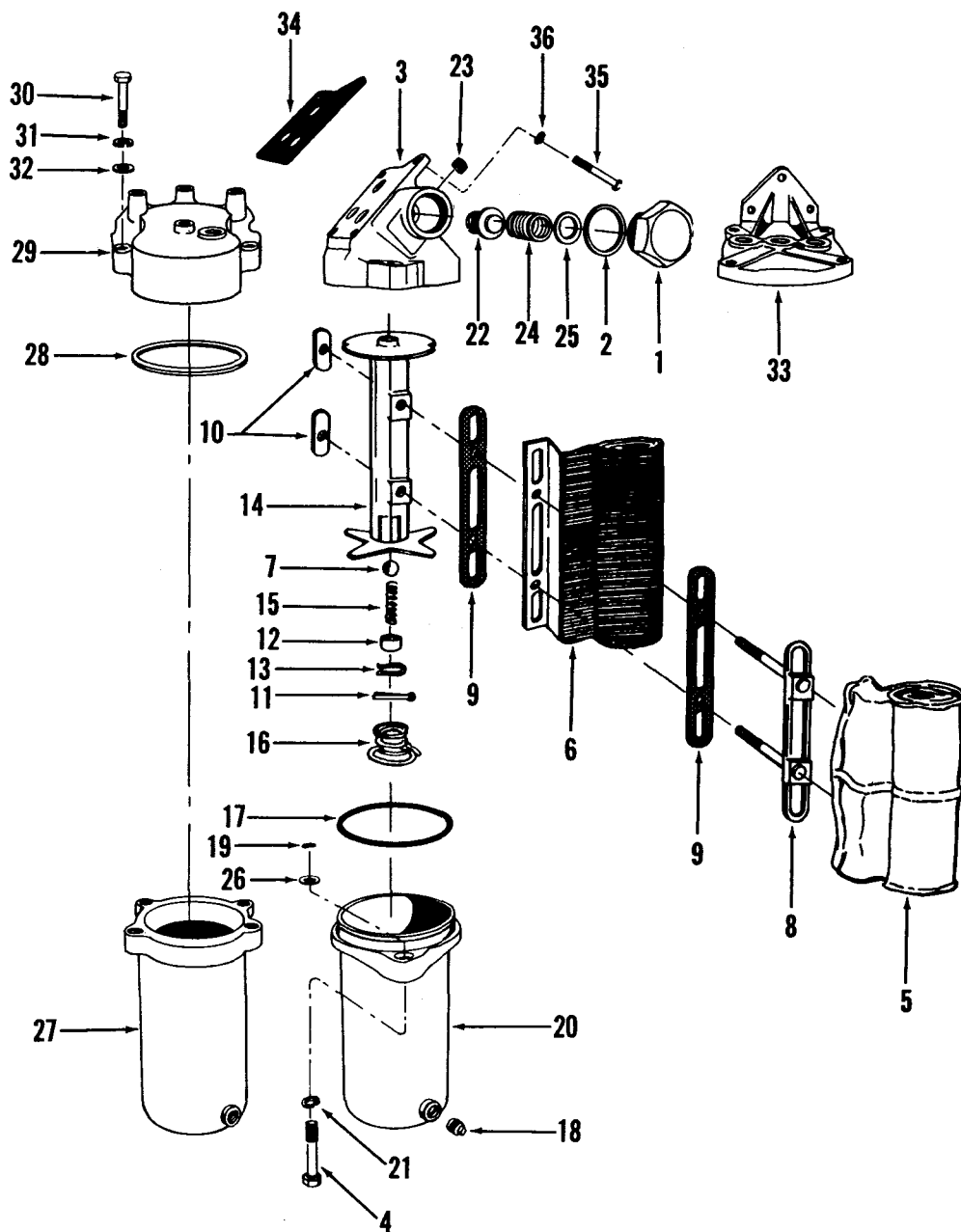
you own the best . . . repair with the best!  
genuine **CUMMINS** parts



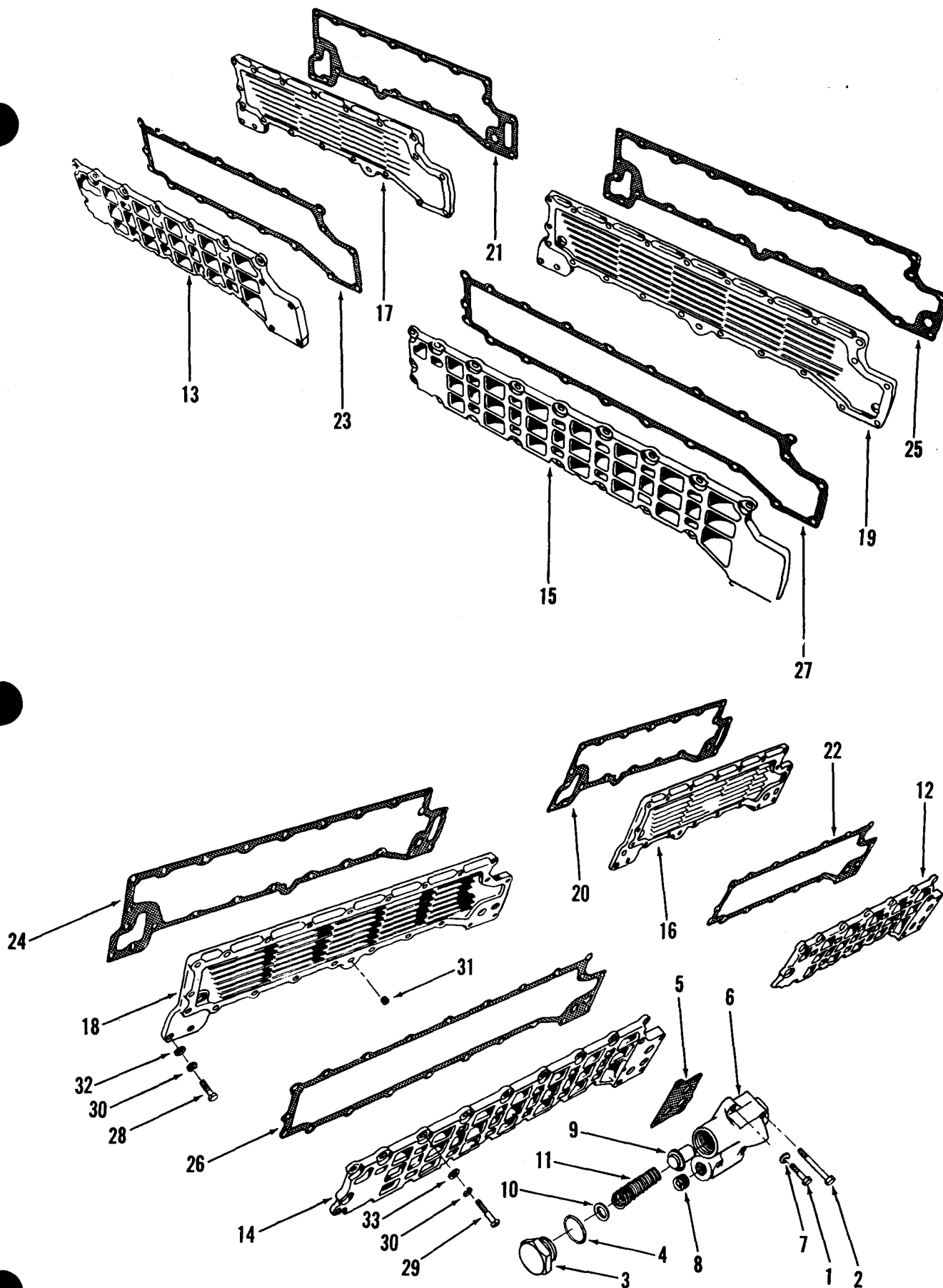
OIL PANS  
Figure 1



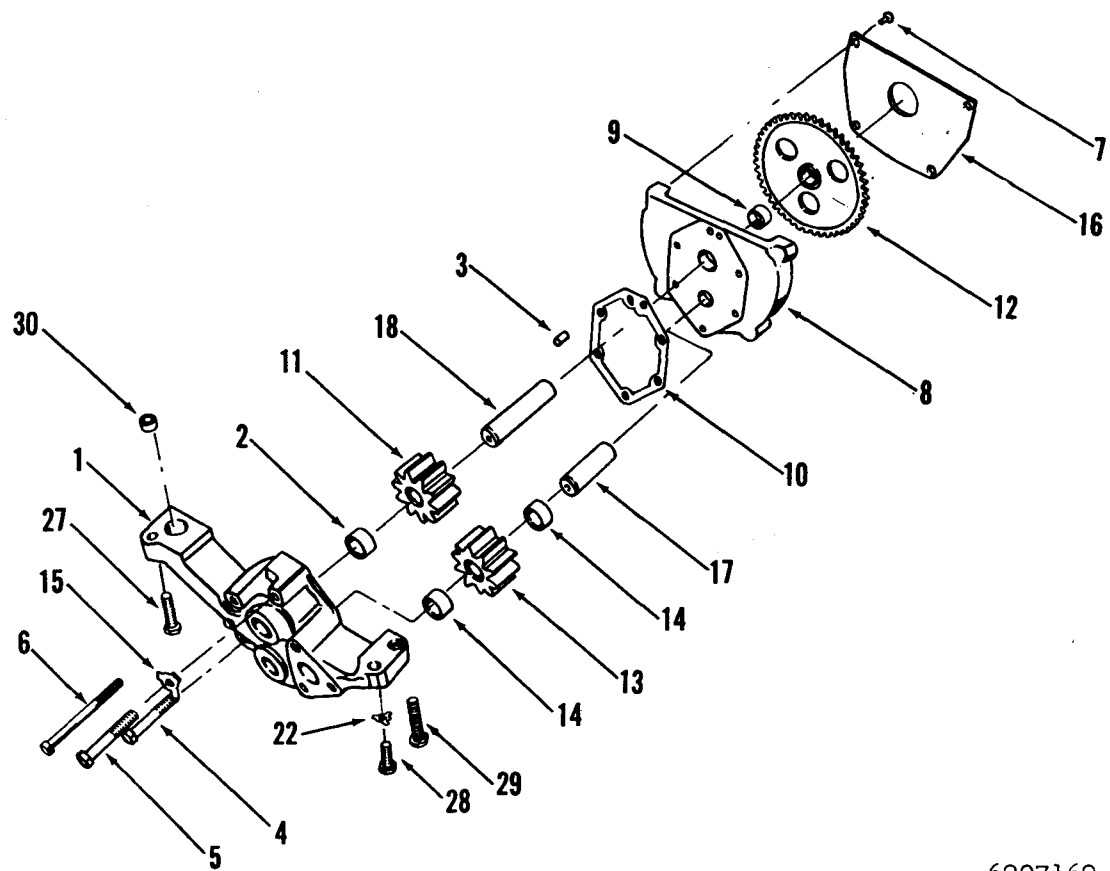
OIL PANS  
Figure 1



LUBRICATING OIL FILTER  
Figure 2

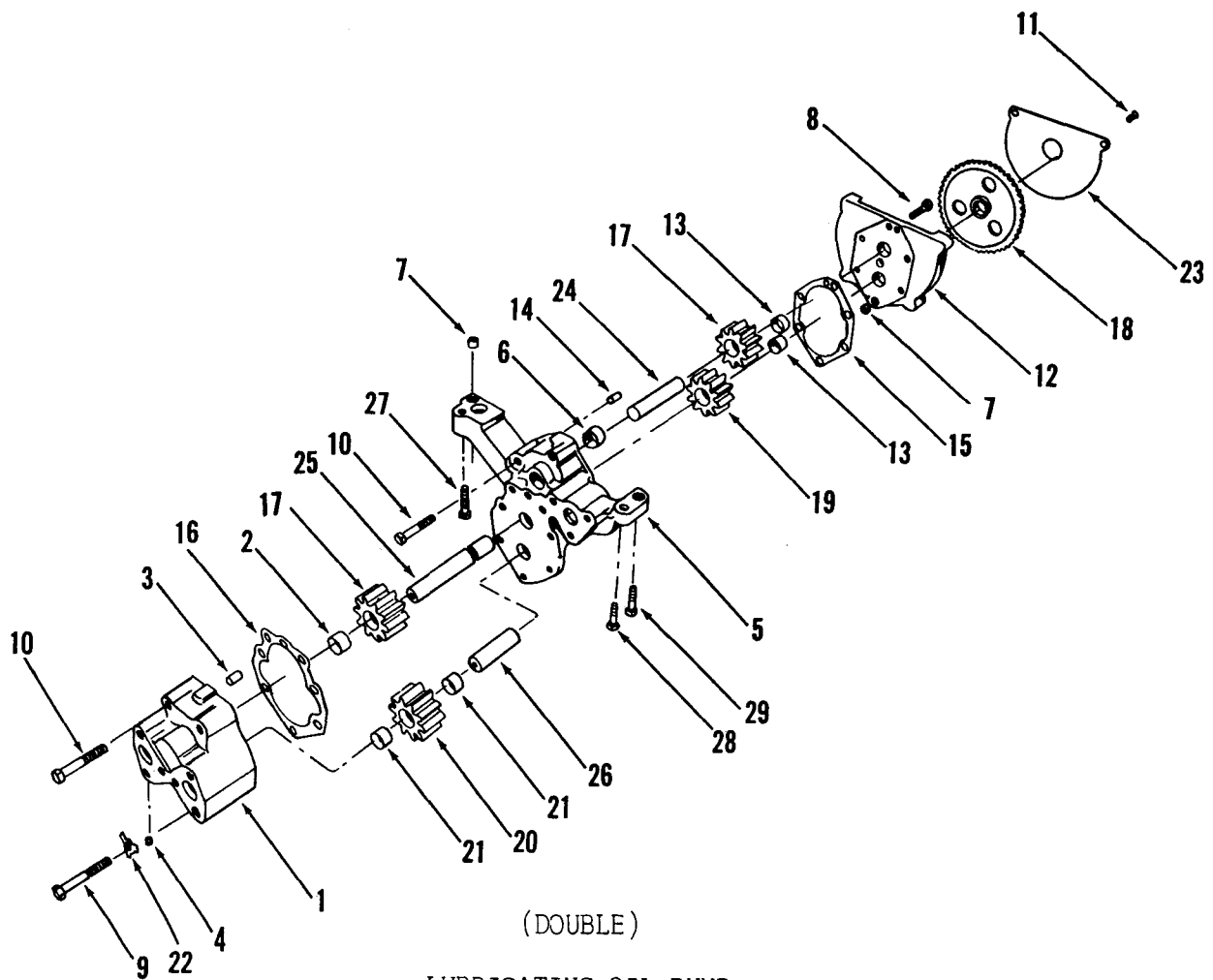


LUBRICATING OIL COOLER  
Figure 3



(SINGLE)

6207162



(DOUBLE)

LUBRICATING OIL PUMP  
Figure 4

6207163

# OIL PAN

07.01  
Page 1  
Issued 1-63

Engine Model	No. Cyl.	Engine Application								Part Number	Part Name	No. Req.	Fig. No.	Ref. No.	Use	Remarks
		B	BI	CI	I	IP	P	M	G							
REAR SUMP																
V6-200	6	X								151602	Pan, oil	1	1	1	Std.	
V8-265	8	X								151603	Pan, oil	1	1	2	Std.	
V6-200	6	X								154676	Pan, oil	1	1	3	Opt.	Shallow
V6-200	6	X								153685	Pan, oil	1	1	4	Opt.	Shallow
V8-265	8	X								154857	Pan, oil	1			Opt.	Shallow
V8-265	8	X		X						149526	Pan, oil	1	1	5	Std.	Use with double oil pump to provide 45° angularity in all directions at (2) gallon low level.
VT8-370	8							X		Not Rel.	Pan, oil	1	1		Std.	
V6-200	6			X						157854	Pan, oil	1			Std.	Use with double oil pump for high angularity to provide 45° operation fore and aft and 30° to each side.
FRONT SUMP																
V6-200	6	X								152066	Pan, oil	1			Opt.	Dipstick right side.
V6-200	6	X								152067	Pan, oil	1			Opt.	Dipstick left side.
V6-200	6	X								156332	Pan, oil	1			Opt.	Same as 152066 except left dipstick boss machined.
V8-265	8	X								151333	Pan, oil	1		6	Opt.	
Interchangeable No. 1 and No. 2 design																

Interchangeable No. 1 and No. 2 design

COMPONENT PARTS FOR ASSEMBLIES ARE SHOWN ON THE FOLLOWING PAGES.

# MISCELLANEOUS AND MOUNTING PARTS

Engine Model	Part Number	Part Name		No. Req.	Fig. No.	Ref. No.
<b>BAFFLE</b>			V6	V8		
V6-200	149527	Baffle, oil pan	1			
<b>GASKET</b>						
V6-200	151102	Gasket, oil pan	1		1	7
V8-265	151101	Gasket, oil pan		1		8
V6-200, V8-265	144667	Gasket, tube flange to pan	1	1	1	9
	67946	Gasket, drain plug	2	2	1	10
V8-265	149747	Gasket, aerator tube		1	1	11
<b>HANGER</b>						
V6-200, V8-265	105073	Hanger, suction tube and flange	2	2	1	12
<b>LOCKPLATE</b>						
V6-200 V8-265	68908	Lockplate, hanger and tube flange to pump	5	5	1	13
	117559	Lockplate	2	2		
<b>SCREEN</b>						
V6-200, V8-265	43226-2	Screen, suction	1	1	1	14
<b>STRAP</b>						
V6-200	152622	Strap, suction bell (use with 152066, 152067 front sump pan)	1		1	15
	157956	Strap, suction bell (CI)	/1			
<b>SUPPORT</b>						
V6-200, V8-265	69171-1	Support, suction screen	1	1	1	16
Interchangeable No. 1 and No. 2 design.						



07.01.1  
Page 3  
issued 1-63

Engine Model	Part Number	Part Name	No. Req.	Fig. No.	Ref. No.
		<b>TUBE AND FLANGE, SUCTION</b>	V6	V8	
V6-200, V8-265	BM-71317	Tube and flange, suction	1	1	17
V6-200	BM-74801	Tube and flange, suction (use with 152066, 152067 front sump pan)	1		18
V6-200	BM-76546	Tube and flange, suction (use with 153685, 154676, 154857 shallow rear sump pans)	1		19
V8-265	BM-73416	Tube and flange, scavenger suction (use with double oil pump) (CI)		1	20
V6-200	BM-79601	Tube and flange, scavenger suction (use with double oil pump) (CI)	1		
V6-200, V8-265	BM-73414	Tube, aerator (use with double oil pump)	1	1	21
	BM-73412	Tube, suction (use with double oil pump) (CI)		1	22
V6-200	BM-79604	Tube, suction (use with double oil pump) (CI)	1		
V8-265	BM-72913	Tube and flange, suction (use with 151333 front sump pan)		1	
		<b>TUBE, BY-PASS</b>			
V6-200, V8-265	BM-76065	Tube, lubricating oil by-pass (std.)	1	1	
V6-200	BM-76067	Tube, lubricating oil by-pass (front sump pan)	1		
V8-265	BM-76066	Tube, lubricating oil by-pass (front sump pan)		1	
V6-200	BM-79600	Tube, lubricating oil (CI)	1		
		<b>HARDWARE</b>			
V6-200, V8-265	S-102-D	Capscrew 3/8-16, UNC-2A 3"			23
	S-107	Capscrew 5/16-18, UNC-2A 3/4"			24
	S-112	Capscrew 3/8-16, UNC-2A 1"			25
	S-114	Capscrew 1/4-20, UNC-2A 3/4"			
	S-117	Capscrew 3/8-16, UNC-2A 3/4"			26
	S-141	Capscrew 3/8-16, UNC-2A 2 3/4"			27
	S-174-B	Capscrew 3/8-16, UNC-2A 1 3/8"			28
	S-604	Lockwasher 3/8"			29
	109558	Nut 3/8"			30
	S-911-B	Plug, pipe 1/8"			
	S-915-A	Plug, pipe 1/2"			
	110907	Plug, pipe, drain			31
	147416	Plug, cup			

Interchangeable No. 1 and No. 2 design.

## MISCELLANEOUS AND MOUNTING PARTS

Engine Model	Part Number	Part Name		No. Req.	Fig. No.	Ref. No.
		<b>HARDWARE (CONT'D)</b>	V6	V8		
V6-200, V8-265	S-602	Washer, plain 13/32"			1	32
	101503	Washer, plain 3/8"			1	33

Engine Model	Part Number	Part Name	No. Req.	Fig. No.	Ref. No.
		<b>TUBE</b>	V6	V8	
V6-200, V8-265	147418	Tube, dipstick	1	1	1 34
	155403	Tube, dipstick (side of rocker cover)	1	1	
	159029	Tube, dipstick (mounts along forward side of R.B. rocker cover for checking oil, rear sump pans)	1	1	
	159036	Tube, dipstick (mounts in No. 2 combination flywheel housing and gear covers)	1	1	
	158459	Tube, dipstick (use instead of 147418 with one piece flywheel housing and gear cover)	1	1	
	158906	Tube, dipstick	1	1	
	158907	Tube, dipstick } Disconnect from oil pans for field service	1	1	
V6-200	156297	Tube, dipstick (use with 153685 cast, shallow rear sump oil pan)	1		
	159434	Tube, dipstick (use with 152066 front sump oil pan. Extends to rear of engine for tilt cab)	1		
	160337	Tube dipstick (use with 157237 flywheel housing and gear cover to permit oil level checking without raising cab)	1		
VT8-370	158707	Tube, dipstick		1	
V6-200, V8-265	161217	Tube, dipstick (CI)	1	1	
		<b>SUPPORT</b>			
V6-200, V8-265	159037	Support, tube clip	1	1	
	159038	Support, tube clip	1	1	
	159039	Support, tube clip	1	1	
		<b>HARDWARE</b>			
V6-200, V8-265	S-117	Capscrew 3/8-16, UNC-2A 3/4"			
	S-604	Lockwasher 3/8"			
	S-223	Nut 3/8"			

All parts interchangeable No. 1 and No. 2 design.

# DIPSTICK AND TUBE

Engine Model	Part Number	Part Name	V6	No. Req.	V8	Fig. No.	Ref. No.
<b>BRACKET</b>			V6	V8			
V6-200, V8-265	150808	Bracket	1	1			
	147135	Bracket, tube support	1	1			
<b>CLAMP</b>							
V6-200, V8-265	65798	Clamp, tube	1	1			
<b>CONNECTOR, TUBE</b>							
V6-200, V8-265	146299	Connector, tube	1	1			
<b>DIPSTICK</b>							
Standard and unmarked dipsticks only are included in this Parts Book, because of the varied number of applications applied to them. Dipsticks may be ordered by the part number obtained from the original engine parts list, or by the part number stamped on the original dipstick.							
Included also are three blank, unmarked dipsticks (straight type only) which Cummins Distributors can cut and mark to fit individual applications. Orders may be placed by specifying the following part numbers:							
V6-200	147417	Dipstick (gear cover type)	1		1		35
V8-265	147538	Dipstick (gear cover type)		1	1		35
VT8-370	158713	Dipstick			1		
V6-200, V8-265	131461	Dipstick (11 7/16" long) (unmarked)	1	1			
	131462	Dipstick (23 1/4" long) (unmarked)	1	1			
	131463	Dipstick (47 11/16" long) (unmarked)	1	1			
	108470	Bushing	1	1			
	108469	Cover, top	1	1			
	108467	Handle	1	1			
	100971	Pin	1	1			
	108468	Washer	1	1			

# LUBRICATING OIL FILTER

07.03  
Page 1  
issued 1-63

Engine Model	No. Cyl.	Engine Application										Part Number	Part Name	No. Req.	Fig. No.	Ref. No.	Use	Remarks
		B	BI	CI	I	IP	P	M	G				<b>LUBRICATING OIL FILTER</b>					
V6-200	6	X		X								BM-71449	Filter and head	1	2		Std.	Oil cooler mounted.
V8-265	8	X		X								BM-71449	Filter and head	1	2			
VT8-370	8							X				BM-60648	Filter and cover	1	2		Std.	Remote mounted.
												BM-59216	Filter and cover	1	2		Opt.	Same as BM-60648 except has 108084 cover.
V6-200	6			X								BM-73750	Filter by-pass	1			Std.	
V8-265	8			X								BM-73750	Filter by-pass	1			Std.	
VT8-370	8							X				BM-75846	Filter, turbocharger oil	1			Std.	

All parts interchangeable No. 1 and No. 2 design.

COMPONENT PARTS FOR ASSEMBLIES ARE SHOWN ON THE FOLLOWING PAGES.

# LUBRICATING OIL FILTER

Part Number	Part Name	No. Req.	Fig. No.	Ref. No.	Part Number	Part Name	No. Req.	Fig. No.	Ref. No.
	<b>LUBRICATING OIL FILTER</b>	V6 V8				<b>LUBRICATING OIL FILTER</b>	V6 V8		
	<b>GROUP A</b>					<b>(REMOTE MOUNTED)</b>			
	<b>GROUP A</b>					<b>GROUP A</b>			
BM-71449	Filter and head assembly, lubricating oil	1 1	2		BM-60648	Filter and cover, lubricating oil	1 1		
151169	Cap, regulator	1 1	2	1	106069	Capscrew to cover	4 4	2	30
140698	Gasket, regulator cap	1 1	2	2	20621	Cover, filter	1 1	2	29
144991	Head, filter	1 1	2	3	114479	Decal	1 1		
BM-54270	Filter, lubricating oil	1 1	2		BM-60647	Filter assembly	1 1		
135168	Capscrew, filter head	2 2	2	4	BM-60646	Element, filter	1 1		
BM-60646	Element, filter	1 1			S-1953	Bag	1 1		
S-1953	Bag, filter	1 1	2	5	134729	Separator	1 1		
134729	Separator	1 1	2	6	BM-60645	Spool assembly (128799)	1 1		
BM-60645	Spool, bag	1 1			128805	Ball, by-pass relief	1 1		
128805	Ball, by-pass relief	1 1	2	7	128800	Clamp, bag	1 1		
128800	Clamp, filter	1 1	2	8	128801	Gasket, bag	2 2		
128801	Gasket, filter clamp	2 2	2	9	128802	Nut, elongated	2 2		
128802	Nut, elongated clamp	2 2	2	10	S-503	Pin, cotter	2 2		
S-503	Pin, cotter	1 1	2	11	128803	Retainer, spring	1 1		
128803	Retainer, spring	1 1	2	12	128807	Ring, retaining	1 1		
128807	Ring, retaining	1 1	2	13	128804	Spring, by-pass ball	1 1		
128799	Spool, bag	1 1	2	14	128806	Spring, spool	1 1		
128804	Spring, by-pass adjusting	1 1	2	15	128799	Spool, bag	1 1		
128806	Spring, filter	1 1	2	16	BM-58237	Shell assembly	1 1	2	27
116024	"O" ring, shell to head	1 1	2	17	69751	Gasket, cover to shell	1 1	2	28
69901	Plug, drain	1 1	2	18	S-622	Lockwasher, cover to shell	4 4	2	32
135169	Ring, retaining	2 2	2	19	69901	Plug, pipe	1 1	2	18
BM-65789	Shell assembly	1 1	2	20	S-610	Washer, plain	1 1	2	31
S-608	Lockwasher, head to filter	2 2	2	21					
155072	Plunger, relief valve	1 1	2	22					
S-908	Plug, pipe, head	1 1	2	23					
139957	Spring, plunger	1 1	2	24					
62815	Shim	As		25					
		Reqd.							
158208	Washer, head to filter	2 2	2	26					
	<b>GROUP B</b>				BM-59216	Filter and cover, lubricating oil	1 1		
	Same as Group A except				108084	Cover, filter	1 1	2	33
BM-158206	Filter and head	1 1							
	Head, filter (has 3/8" N.P.T.F. in rear for by-pass take-off)	1 1	2	3					

# LUBRICATING OIL FILTER

07.03  
Page 3  
issued 1-63

Part Number	Part Name	No. Req.	Fig. No.	Ref. No.	Part Number	Part Name	No. Req.	Fig. No.	Ref. No.
		V6 V8							
	<b>LUBRICATING OIL BY-PASS FILTER</b>								
	GROUP A								
BM-73750	Filter, lubricating oil	1	1						
145664	Bracket, mounting	1	1						
70188	Capscrew, mounting bracket	8	8						
70223	Capscrew, coupling half	2	2						
136750	Cartridge	1	1						
150038	Coupling half with nuts, cover	1	1						
150039	Coupling half, cover	1	1						
159667	Cover	1	1						
70189	Lockwasher, bracket	8	8						
70194	Lockwasher, coupling half	2	2						
70299	Nut, mounting bracket	8	8						
145640	"O" ring, cover	1	1						
S-908	Plug, cover	1	1						
145665	Strap, mounting	2	2						
BM-74445	Shell, filter	1	1						
114479	Decal, filter	1	1						
131911	Orifice, plug #6	1	1						
S-908	Plug, drain	1	1						
BM-74441	Support, upper	1	1						
116029	"O" ring, support	1	1						
150037	Spring, hold down	1	1						
150036	Support, upper	1	1						
	<b>TURBOCHARGER OIL FILTER</b>								
	GROUP A								
BM-75846	Filter, turbocharger	1							
153106	Bolt, head	1							
152499	Element, filter	1							
153717	Head, filter	1							

PARTS INDENTED ARE INCLUDED IN THE PART UNDER WHICH THEY ARE INDENTED

# MISCELLANEOUS AND MOUNTING PARTS

Engine Model	Part Number	Part Name	V6	No. Req.	V8	Fig. No.	Ref. No.
<b>BRACES AND BRACKETS</b>			V6		V8		
V8-265	159766	Brace, filter bracket			1		
V6-200, V8-265	156143	Bracket, filter (mounts filter in a horizontal position, from L.B. oil cooler cover. Center line of shell approximately 5 1/2" below center line of crankshaft, 9 7/8" out from center line of crankshaft, 9 7/8" out from engine center line.	1	1			
	158762	Bracket, filter (use with Woodward governor)	1	1			
VT8-370	160067	Bracket, filter		1			
	158604	Bracket, turbocharger filter		1			
<b>GASKETS</b>							
V6-200, V8-265, VT8-370	145075	Gasket, filter to cooler cover	1	1	2	34	
<b>REGULATOR, LUBRICATING OIL PRESSURE</b> (Use with Remote Mounted Filter)							
V6-200, V8-265, VT8-370	BM-74634	Regulator, housing (Std. VT8-370-M)	1	1			
	S-141	Capscrew, housing	1	1	2	1	
	S-199-B	Capscrew, housing	1	1	2	2	
	151169	Cap, pressure regulator	1	1	2	3	
	140698	Gasket, pressure regulator	1	1	2	4	
	145075	Gasket, housing	1	1	2	5	
	152249	Housing, regulator	1	1	2	6	
	S-604	Lockwasher, housing	4	4	2	7	
	S-901	Plug, pipe	1	1	2	8	
	155072	Plunger	1	1	2	9	
	62815	Shim, regulator	As	Reqd	2	10	
	139957	Spring, regulator	1	1	2	11	
<b>HARDWARE</b>							
	S-141	Capscrew 3/8-16, UNC-2A 2 3/4"			2	35	
	S-604	Lockwasher 3/8"			2	36	



# LUBRICATING OIL COOLER

07.05  
Page 1  
issued 1-63

Engine Model	No. Cyl.	Engine Application										Part Number	Part Name	No. Req.	Fig. No.	Ref. No.	Use	Remarks
		B	BI	CI	I	IP	P	M	G									
<b>COVER</b>																		
V6-200	6	X		X								157419	Cover, element	1	3	12	Std.	L.B.
V6-200	6	X		X								157418	Cover, element	1	3	13	Std.	R.B.
V8-265	8	X		X								157417	Cover, element	1	3	14	Std.	L.B.
V8-265	8	X		X								157416	Cover, element	1	3	15	Std.	R.B.
VT8-370	8								X			157417	Cover, element	1	3	14	Std.	L.B.
VT8-370	8								X			157416	Cover, element	1	3	15	Std.	R.B.
V8-265	8	X										161461	Cover, element	1			Opt.	L.B. Has filter pad at 3° angle from vertical. Use with front down exhaust.
<b>ELEMENT</b>																		
V6-200	6	X		X								157463	Element, plate, cooler	1	3	16	Std.	L.B.
V6-200	6	X		X								157461	Element, plate, cooler	1	3	17	Std.	R.B.
V8-265	8	X		X								157462	Element, plate, cooler	1	3	18	Std.	L.B.
V8-265	8	X		X								157460	Element, plate, cooler	1	3	19	Std.	R.B.
VT8-370	8								X			157462	Element, plate, cooler	1	3	18	Std.	L.B.
VT8-370	8								X			157460	Element, plate, cooler	1	3	19	Std.	R.B.
V8-265	8	X										161463	Element, plate, cooler	1			Opt.	L.B. Use with 161461

COMPONENT PARTS FOR ASSEMBLIES ARE SHOWN ON THE FOLLOWING PAGES.

**MISCELLANEOUS AND MOUNTING PARTS**

Engine Model	Part Number	Part Name	No. Req.	Fig. No.	Ref. No.
<b>GASKET</b>			V6	V8	
V6-200	157429	Gasket, element to block (L.B.)	1	3	20
	157427	Gasket, element to block (R.B.)	1	3	21
	157439	Gasket, cover to element (L.B.)	1	3	22
	157437	Gasket, cover to element (R.B.)	1	3	23
V8-265,	157428	Gasket, element to block (L.B.)	1	3	24
VT8-370	157426	Gasket, element to block (R.B.)	1	3	25
	157438	Gasket, cover to element (L.B.)	1	3	26
	157436	Gasket, cover to element (R.B.)	1	3	27
	161462	Gasket, cover to element (L.B.) Use with 161461, 161462.	1		
<b>HARDWARE</b>					
	S-103-D	Capscrew 3/8-16, UNC-2A 1 1/4"		3	28
	S-120	Capscrew 3/8-16, UNC-2A 1 3/4"		3	29
	S-604	Lockwasher 3/8"		3	30
	S-910-B	Plug, pipe 1/4"		3	31
	S-602	Washer 13/32"		3	32
	63842	Washer 13/32"		3	33

# LUBRICATING OIL PUMP

07.06  
Page 1  
issued 1-63

Engine Model	No. Cyl.	Engine Application								Part Number	Part Name	No. Req.	Fig. No.	Ref. No.	Use	Remarks
		B	BI	CI	I	IP	P	M	G							

All parts interchangeable between No. 1 and No. 2 design.

# LUBRICATING OIL PUMP

Part Number	Part Name	No. Req.	Fig. No.	Ref. No.	Part Number	Part Name	No. Req.	Fig. No.	Ref. No.
<b>LUBRICATING OIL PUMP (SINGLE)</b>		V6 V8							
GROUP A									
BM-76055	Pump, lubricating oil	1 1							
BM-76861	Body and bushing (149635)	1 1	4	1					
68365	Bushing, body	2 2	4	2					
70760	Dowel, body	1 1	4	3					
S-104	Capscrew, cover to body	3 3	4	4					
S-137	Capscrew, cover to body	1 1	4	5					
108707	Capscrew, cover to body	2 2	4	6					
114463	Capscrew, plate	4 4	4	7					
BM-74650	Cover, pump (151032)	1 1	4	8					
68365	Bushing, cover	1 1	4	9					
143694	Gasket, cover to body	1 1	4	10					
143403	Gear, driver	1 1	4	11					
149151	Gear, drive, main	1 1	4	12					
BM-71393	Gear, idler (143402)	1 1	4	13					
68365	Bushing, gear	2 2	4	14					
68908	Lockplate, cover to body	6 6	4	15					
151033	Plate, cover	1 1	4	16					
143406	Shaft, idler	1 1	4	17					
143405	Shaft, drive	1 1	4	18					
<b>LUBRICATING OIL PUMP (DOUBLE)</b>									
GROUP B									
BM-76203	Pump, lubricating oil	1 1	4						
BM-76877	Body and bushing (149955)	1 1	4	1					
68365	Bushing, body	1 1	4	2					
70760	Dowel, body	1 1	4	3					
S-965-E	Plug, pipe	1 1		4					
BM-76201	Body and bushing (152038)	1 1	4	5					
68365	Bushing, body	1 1	4	6					
69236	Dowel, body	1 1	4	7					
S-103-D	Capscrew, cover to body	1 1		8					
S-104	Capscrew, cover to body	1 1		9					
S-137	Capscrew, cover to body	4 4	4	10					
114463	Capscrew, plate	4 4		11					
BM-73405	Cover and bushing (149809)	1 1	4	12					
68365	Bushing, cover	1 1		13					
69236	Dowel, cover to body	1 1		14					
143694	Gasket, cover to body	1 1	4	15					
149816	Gasket, scavenger pump	1 1		16					
143403	Gear, drive	2 2		17					
149151	Gear, drive (main)	1 1	4	18					
149719	Gear, drive	1 1	4	19					
BM-76878	Gear and bushing, idler (149972)	1 1		20					
68365	Bushing, gear	2 2		21					
68908	Lockplate	2 2		22					
151620	Plate, cover	1 1		23					
143405	Shaft, drive	1 1		24					
149717	Shaft, drive (Scavenger)	1 1		25					
149718	Shaft, idler	1 1	4	26					

All parts interchangeable No. 1 and No. 2 design.

PARTS INDENTED ARE INCLUDED IN THE PART UNDER WHICH THEY ARE INDENTED

# MISCELLANEOUS AND MOUNTING PARTS

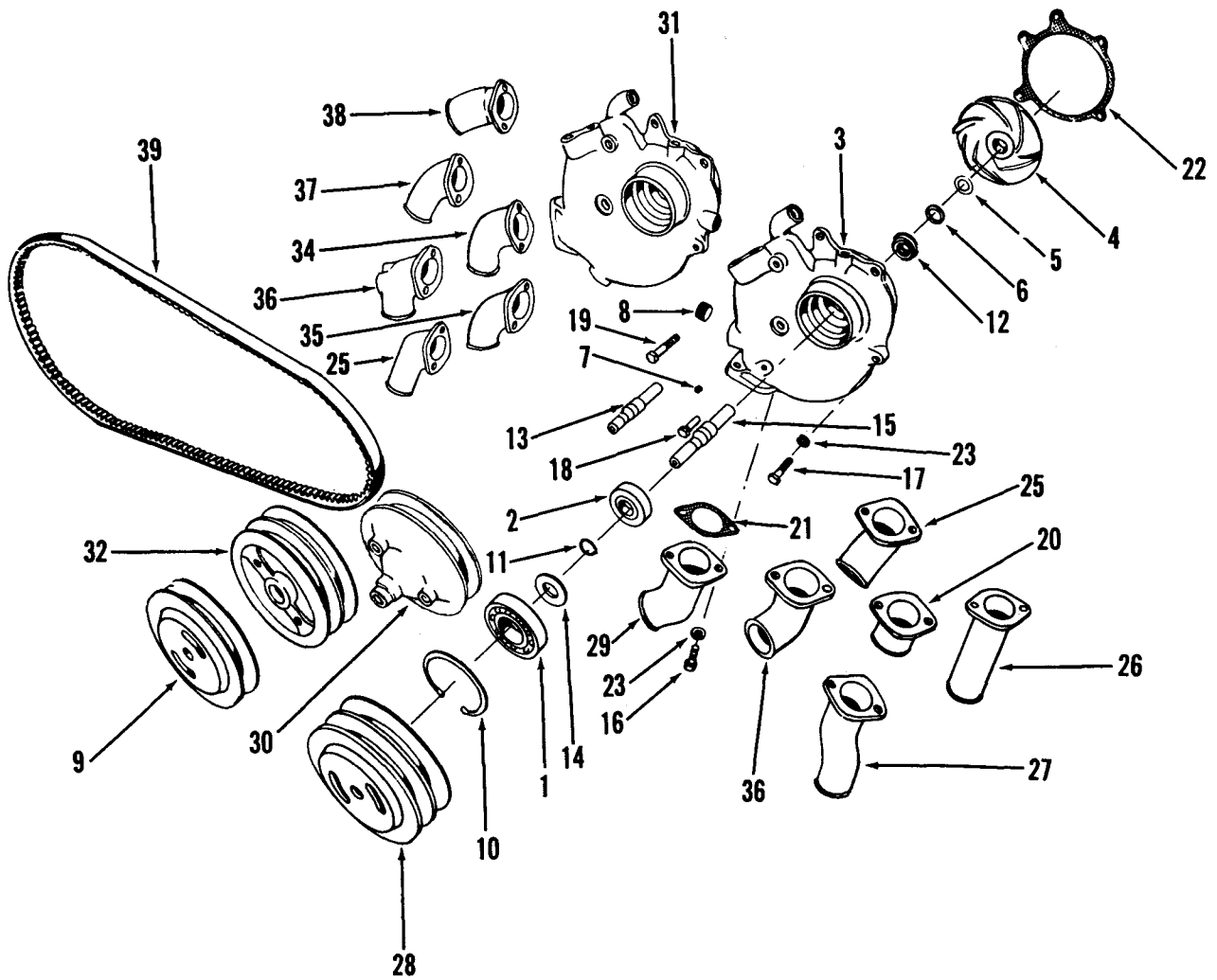
07.06.1  
Page 3  
issued 1-63

Engine Model	Part Number	Part Name	V6	No. Req.	V8	Fig. No.	Ref. No.
V6-200, V8-265, VT8-370	69236	<b>DOWELS</b>					
		Dowel, pump to block	2	2	4		30
V6-200, V8-265, VT8-370	68908	<b>LOCKPLATE</b>					
		Lockplate, pump to block	2	2	4		22
		<b>HARDWARE</b>					
		S-103-D Capscrew 3/8-16, UNC-2A 1 1/4"				4	28
		S-120 Capscrew 3/8-16, UNC-2A 1 3/4"				4	27
	108707	Capscrew 3/8-16, UNC-2A 1 1/2"				4	29

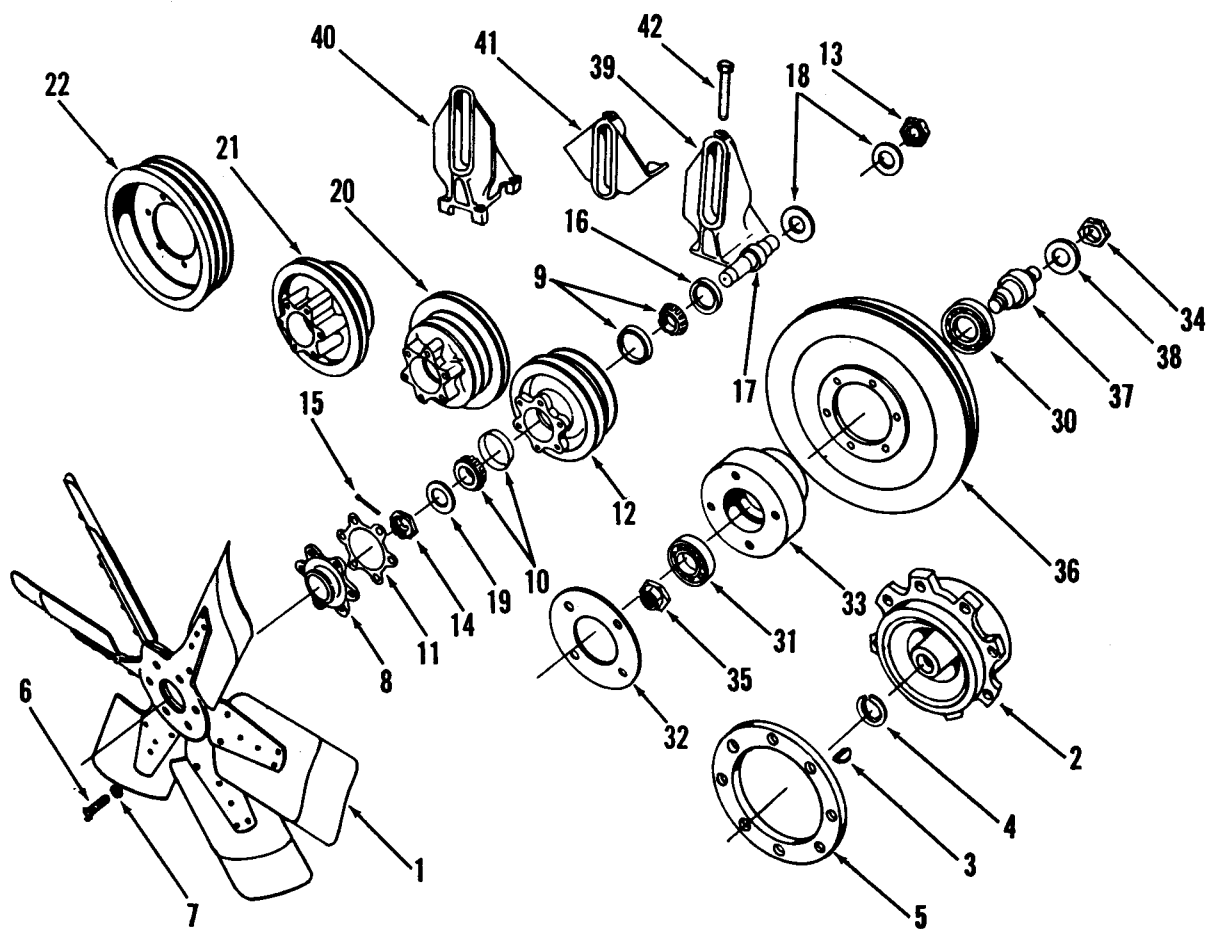
# **G**roup 08

***cooling  
system***

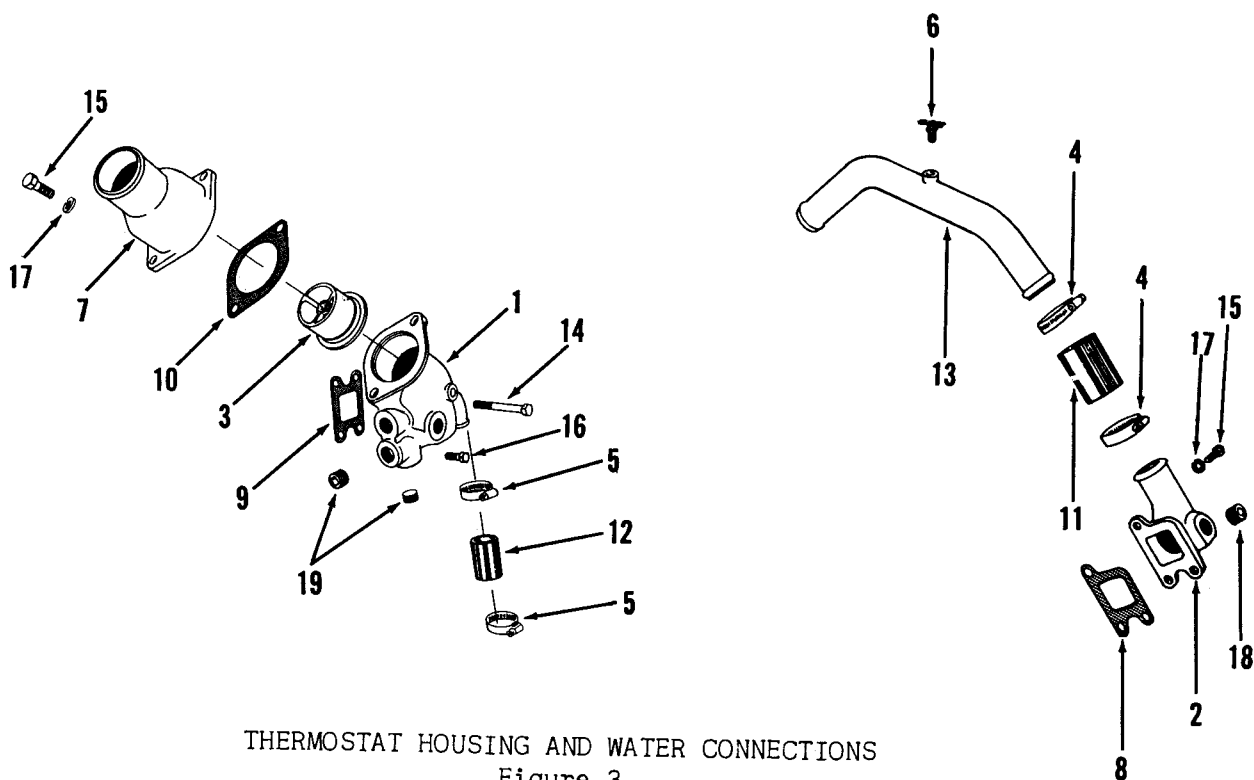
you own the best . . . repair with the best  
genuine **CUMMINS** parts



WATER PUMPS AND PULLEYS  
Figure 1

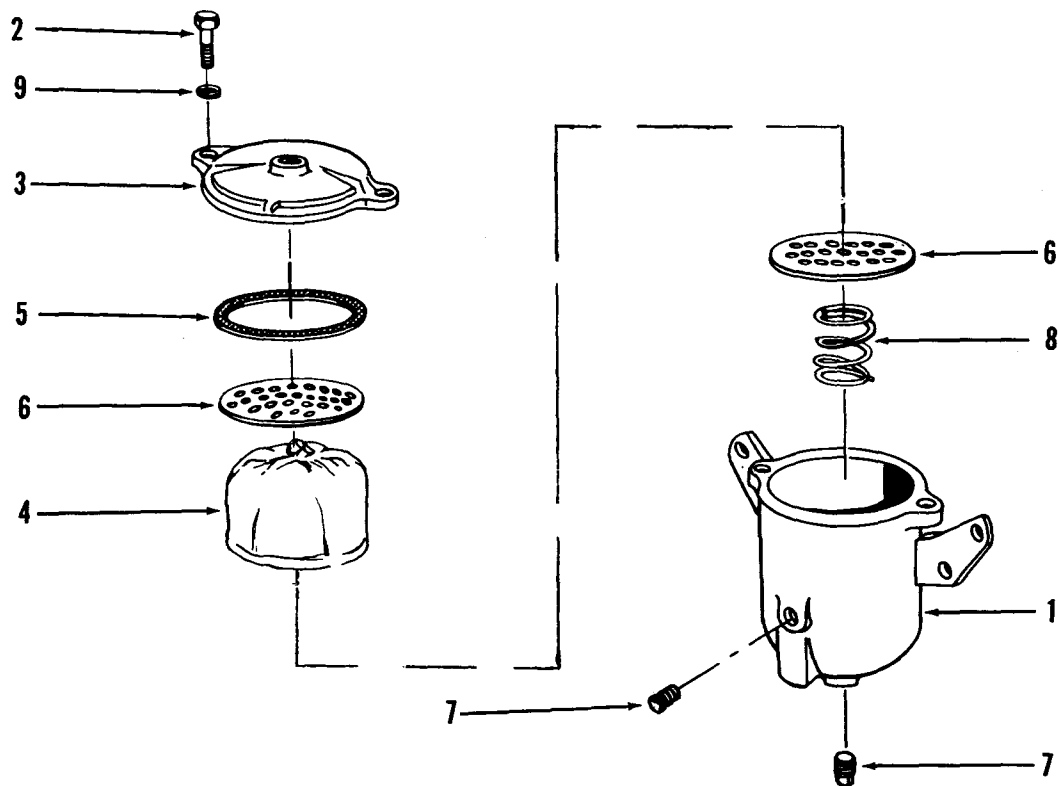


FANS, FAN HUBS, AND FAN BRACKETS  
Figure 2



THERMOSTAT HOUSING AND WATER CONNECTIONS  
Figure 3





CORROSION RESISTOR  
Figure 4

# WATER PUMP

08.01  
Page 1  
issued 1-63

Engine Model	No. Cyl.	Engine Application								Part Number	Part Name	No. Req.	Fig. No.	Ref. No.	Use	Remarks
		B	BI	CI	I	IP	P	M	G		<b>WATER PUMP</b>					
V6-200	6	X								BM-76115	Pump, water	1	1		Std.	Low mount fan, 149506 pulley.
V8-265	8	X								BM-76115	Pump, water	1	1		Std.	
V6-200, V8-265	6,8	X								BM-78680	Pump, water	1	1		Opt.	Same as BM-76115, less pulley.
V6-200,	6,8	X								BM-76161	Pump, water	1	1		Opt.	High mount fan, 155227 pulley.
										BM-78658	Pump, water	1	1		Opt.	Same as BM-76161, less pulley.
										BM-76435	Pump, water	1	1		Opt.	Same as BM-76161, except has 154586 pulley.
										BM-78618	Pump, water	1	1		Opt.	Same as BM-76161, except has 159768 body.
										BM-78414	Pump, water	1	1		Opt.	Same as BM-76161, except has 159112 pulley.
V6-200	6			X						BM-79557	Pump, water	1	1		Std.	Same as BM-76161 except has 158056,
V8-265	8			X						BM-79557	Pump, water	1	1		Std.	158057 sheaves.
V6-200 V8-265	6,8									BM-79143	Pump, water	1	1		Opt.	High mount fan. Constant velocity inlet.
VT8-370	8								X	BM-78847	Pump, water	1	1		Std.	
										BM-78016	Pump, water	1	1		Opt.	Same as BM-78847, except has 156658 body, 156660 pulley.

COMPONENT PARTS FOR ASSEMBLIES ARE SHOWN ON THE FOLLOWING PAGES.

# WATER PUMP

Part Number	Part Name	No. Req.	Fig. No.	Ref. No.	Part Number	Part Name	No. Req.	Fig. No.	Ref. No.
	<b>WATER PUMP (LOW MOUNT FAN)</b>	V6 V8				<b>WATER PUMP (HIGH MOUNT FAN) (CONT'D)</b>	V6 V8		
	GROUP A					GROUP C			
M-76115	Pump, water	1 1 1				Same as Group A except:			
149506 *	Pulley, (one groove)	1 1 1	9						
BM-78680	Pump, water (less pulley)	1 1 1							
69866 *	Bearing, ball	1 1 1	1		BM-78618	Pump, water	1 1		
154577	Bearing, ball	1 1 1	2		159768	Body (Same as 157398 except has brazed by-pass plug)	1 1	1	3
157398	Body, water pump (bottom inlet)	1 1 1	3						
BM-76114	Impeller, water pump (159182)	1 1 1	4						
143913	Film, bonding	1 1 1	5						
135079	Seat, water pump	1 1 1	6						
S-911-B	Plug, pipe	2 2 1	7			GROUP D			
S-995	Plug, pipe	1 1 1	8			Same as Group A except:			
70183 *	Retainer, bearing	1 1 1	10						
S-16237	Ring, snap	1 1 1	11						
144306 *	Seal, water pump	1 1 1	12		BM-78414	Pump, water	1		
155528	Shaft, water pump	1 1 1	13		159112	Pulley, water pump (use with 159117 generator pulley, 159113 crankshaft pulley)	1		
154639	Spacer, bearing	1 1 1	14						
	<b>WATER PUMP (HIGH MOUNT FAN)</b>								
	GROUP A					GROUP E			
						Same as Group A except:			
3M-76161	Pump, water	1 1 1			BM-79557	Pump, water	1 1		
155227	Pulley, pump (2 groove)	1 1 1	28		S-111	Capscrew, sheave	3 3		
BM-78658	Pump, water (less pulley)	1 1 1			S-605	Lockwasher	3 3		
69866 *	Bearing, ball	1 1 1	1		158056	Sheave, fixed	1 1		
154577	Bearing, ball	1 1 1	2		158057	Sheave, adjusting	1 1		
157398	Body, water pump	1 1 1	3						
S-1109	Fitting, grease	1 1 1							
BM-76114	Impeller (159182)	1 1 1	4						
143913	Film, bonding	1 1 1	5						
135079	Seat, ceramic	1 1 1	6						
S-911-B	Plug, pipe	1 1 1	7			GROUP F			
S-995	Plug, pipe	1 1 1	8						
70183 *	Retainer, bearing	1 1 1	10		BM-78847	Pump, water	1		
S-16237	Ring, snap	1 1 1	11		154967	Bearing, ball	1		
144306 *	Seal, water pump	1 1 1	12		156658	Body	1 1	31	
159330	Shaft, water pump	1 1 1	15		S-962-E	Cock, drain	1		
154639	Spacer, water pump	1 1 1	14		BM-76114	Impeller (159182)	1 1	4	
					143913	Film, bonding	1 1	5	
					135079	Seat, ceramic	1 1	6	
					S-911-B	Plug, pipe	1 1	7	
					S-915-A	Plug, pipe	1		
					S-995	Plug	1 1	8	
	GROUP B				158714	Pulley	1		
	Same as Group A except:				S-16255	Ring, retaining	1		
					144306	Seal	1 1	12	
					159192	Shaft	1		
3M-76435	Pump, water	1 1							
154586	Pulley, water pump	1 1 1	30						

\* Interchangeable No. 1 and No. 2 design.

PARTS INDENTED ARE INCLUDED IN THE PART UNDER WHICH THEY ARE INDENTED

# WATER PUMP

08.01  
Page 3  
issued 1-63

Part Number	Part Name	No. Req.	Fig. No.	Ref. No.	Part Number	Part Name	No. Req.	Fig. No.	Ref. No.
	<b>WATER PUMP (HIGH MOUNT FAN) (CONT'D)</b>	V6 V8							
	GROUP G								
	Same as Group E except:								
BM-78016	Pump, water	1							
156660	Pulley	1	1	32					
	GROUP H								
	Same as Group E except:								
BM-	Pump, water	1							
158533	Body	1							
158714	Pulley	1							

PARTS INDENTED ARE INCLUDED IN THE PART UNDER WHICH THEY ARE INDENTED

# MISCELLANEOUS AND MOUNTING PARTS

Engine Model	Part Number	Part Name		No. Req.	Fig. No.	Ref. No.
		<b>BELTS</b>	V6	V8		
V6-200, V8-265	123818	Belt, water pump (low mount fan) Note: Belt for high mounted water pump same as fan drive belt.	1	1	1	39
	124421	Belt, water pump (CI)	1	1	1	39
VT8-370-M	154318	Belt, water pump and sea water pump		1	1	39
VT8-370-M	S-923-E	Cock, drain		1		
		<b>CONNECTION</b>				
V6-200, V8-265	68270	* Connection, water inlet (2.5" long) (std. low mount fan)	1	1	1	20
	158150	Connection, water inlet	1	1	1	25
	158059	Connection, water inlet	1	1	1	27
	154590	Connection, water inlet	1	1	1	29
	156399	Connection, water inlet, straight (7.31" long)	1	1	1	26
	156661	Connection, water inlet	1	1	1	34
	151075	Connection, water inlet, 90° forward, 20° in	1	1	1	35
	154591	Connection, water inlet, 90° straight in	1	1	1	36
	69246	Connection	1	1	1	37
	158059	Elbow, down, forward, special angle	1	1	1	27
	158646	Connection, 90° elbow points to front, 25° rotated from capscrew center line	1	1	1	38
VT8-370-M	160064	Connection, water inlet				
		<b>GASKET</b>				
V6-200, V8-265	154358	Gasket, water pump to block	1	1	1	22
	9221	* Gasket, inlet connection	1	1	1	21
		<b>HARDWARE</b>				
	S-103-D	Capscrew 3/8-16, UNC-2A 1 1/4"			1	18
	S-112	Capscrew 3/8-16, UNC-2A 1"			1	16
	S-137	Capscrew 3/8-16, UNC-2A 2"			1	19
	108707	Capscrew 3/8-16, UNC-2A 1 1/2"			1	17
	S-604	Lockwasher 3/8"			1	23

\* Interchangeable No. 1 and No. 2 design.

# FAN

08.02  
Page 1  
issued 1-63

Engine Model	No. Cyl.	Engine Application								Part Number	Part Name	No. Req.	Fig. No.	Ref. No.	Use	Remarks
		B	BI	CI	I	IP	P	M	G							
V6-200, V8-265	6,8									141854	Fan	1	2	1	Opt.	30" sucker, L.H. low mount
										21036	Fan	1	2	1	Opt.	24" sucker, R.H. high mount
										149154	Fan	1	2	1	Opt.	28" sucker, L.H. high mount
										160620	Fan	1			Opt.	28" blower, low mount

COMPONENT PARTS FOR ASSEMBLIES ARE SHOWN ON THE FOLLOWING PAGES.

# FAN HUB

08.03  
Page 1  
issued 1-63

Engine Model	No. Cyl.	Engine Application								Part Number	Part Name	No. Req.	Fig. No.	Ref. No.	Use	Remarks
		B	BI	CI	I	IP	P	M	G		<b>FAN HUB</b>					
V6-200	6	X								BM-71346	Hub, fan (140879)	1	2	2	Std.	Low mount fan.
V8-265	8	X								BM-71347	Hub, fan (140879)	1	2	2	Std.	
V6-200, V8-265				X						BM-79555	Hub, fan	1	2		Std.	High mount fan.
V6-200, V8-265	6,8	X								BM-75818	Hub, fan	1	2		Opt.	High mount fan.
		X								BM-73285	Hub, fan	1	2		Opt.	Same as BM-75818 except has 150067 hub.
		X								BM-74769	Hub, fan	1	2		Opt.	Same as BM-75818 except has 152661 hub.
		X								BM-77838	Hub, fan	1	2		Opt.	Same as BM-75818 except has 158258 hub. For fan with 3" pilot, 4 bolts on 4 1/2" bolt circle, .557:1 ratio.
		X								BM-78993	Hub, fan	1	2		Opt.	Same as BM-75818 except has 158466 hub. Use with Freon air conditioner.
		X								BM-78268	Hub, fan	1	2		Opt.	Same as BM-75818 except has 158780 pulley, 158780 same as 150067 pulley except generator drive groove 8.8" diameter.
		X								BM-76431	Hub, fan	1	2		Opt.	High mount fan with 3" pilot, 12 1/4" fan center, .429:1 ratio, fan mounting face 8.440.
										BM-76456	Hub, fan	1	2		Opt.	Same as BM-75818 except has 154519 pulley, 146648 shaft.
										BM-	Hub, fan (158519)		2		Opt.	Use with fans mounted on the crankshaft.
Interchangeable No. 1 and No. 2 design.																

COMPONENT PARTS FOR ASSEMBLIES ARE SHOWN ON THE FOLLOWING PAGES.

# FAN HUB

Part Number	Part Name	No. Req.	Fig. No.	Ref. No.	Part Number	Part Name	No. Req.	Fig. No.	Ref. No.
	<b>FAN HUB (LOW MOUNT)</b>	V6V8				<b>FAN HUBS (CONT'D)</b>	V6V8		
	GROUP A					GROUP E			
BM-71346	Hub, fan (140879)	1	2	2		Same as Group A except:			
BM-71347	Hub, fan (140879)	1	2	2					
S-313	Key, hub	1 1	2	3					
142143	Ring, retaining	1 1	2	4	BM-78993	Hub, fan	1 1		
153125	Spacer, fan	1	2	5	158466	Hub, pulley	1 1		
	<b>FAN HUB (HIGH MOUNT)</b>								
	GROUP A					GROUP F			
						Same as Group A except:			
BM-75818	Hub, fan	1 1	2						
S-103-D	Capscrew, fan to hub	6 6	2	6	BM-78268	Hub, fan	1 1		
S-604	Lockwasher, fan	6 6	2	7	158780	Hub, pulley	1 1		
143085	Spacer, pilot	1 1	2	8					
BM-73891	Hub, pulley	1 1	2						
143116	Bearing	1 1	2	9					
116759	Bearing	1 1	2	10					
143108	Gasket	1 1	2	11		GROUP G			
149366	Hub, pulley	1 1	2	12		Same as Group A except:			
67532	Nut, shaft	1 1	2	13					
146650	Nut, shaft	1 1	2	14					
S-510	Pin, cotter	1 1	2	15					
106276	Seal, oil	1 1	2	16	BM-79555	Hub, fan	1 1		
149369	Shaft	1 1	2	17	157184	Hub, pulley	1 1		
67526	Washer, clamp	2 2	2	18	157776	Shaft	1 1		
146651	Washer, clamp	1 1	2	19	S-112	Capscrew	6 6		
S-911-B	Plug, pipe	2 2	2		S-604	Lockwasher	6 6		
					157185	Pulley, generator drive	1 1		
					158554	Support, fan hub	1 1		
	GROUP B					GROUP H			
	Same as Group A except:					Same as Group A except:			
					BM-76456	Hub, fan	1 1		
BM-73285	Hub, fan	1 1	2		154519	Pulley	1 1		
150067	Hub, pulley (8" diameter)	1 1	2	20	146648	Shaft	1 1		
	GROUP C								
	Same as Group A except:				BM-76431	Hub, fan	1 1	2	
					S-16093	Bearing, ball	1 1	2	30
					141771	Bearing, ball	1 1	2	31
BM-74769	Hub, fan	1 1	2		S-103-D	Capscrew, hub or pulley	6 6	2	6
152661	Hub, pulley	1 1	2	21	67547	Gasket, hub to pulley	1 1	2	32
					142189	Hub, fan	1 1	2	33
					67532	Nut, shaft	1 1	2	34
					142176	Nut, huglock	1 1	2	35
					S-604	Lockwasher, hub to pulley	6 6	2	7
					S-911-B	Plug, pipe	2 2	2	
	GROUP D				154316	Pulley, fan	1 1	2	36
	Same as Group A except:				120334	Shaft	1 1	2	37
					67546	Washer, shaft	1 1	2	38
BM-77838	Hub, fan	1 1	2			GROUP J			
158258	Hub, pulley	1 1	2	22					
					BM-	(158519)	1 1	2	

PARTS INDENTED ARE INCLUDED IN THE PART UNDER WHICH THEY ARE INDENTED



# FAN BRACKET

08.04  
Page 1  
Issued 1-63

Engine Model	Part Number	Part Name		No. Req.	Fig. No.	Ref. No.
		<b>BRACKET</b>	V6	V8		
V6-200, V8-265	156122	Bracket, fan	1	1	2	39
	158305	Bracket, fan	1	1	2	40
	154526	Bracket, fan	1	1	2	41
V8-265	155995	Bracket, fan (CI)	1	1	2	
V6-200, V8-265	160206	Bracket, fan hub (similar to 158305 except provides 21 3/4" fan center)	1	1	2	

## MISCELLANEOUS AND MOUNTING PARTS

Engine Model	Part Number	Part Name		No. Req.	Fig. No.	Ref. No.
V6-200, V8-265		<b>BELTS</b>	V6	V8		
		For belts not shown see application Chart page 1 Group 13.08				
		Belt, fan (CI)	2	2		
		Belt, fan (use with Freon air compressor)	2	2		
V6-200, V8-265	157083	<b>COUPLING</b>				
		Coupling, flexible (use with remote mounted fan)	1	1		
V6-200, V8-265	64290-A	<b>SCREWS</b>				
		Screw, fan adjusting 1/2-13, UNC-2A 5 3/16"	1	1	2	42
		<b>HARDWARE</b>				
		S-103-D Capscrew 3/8-16, UNC-2A 1 1/4"				
		S-119 Capscrew 5/16-18, UNC-2A 1 1/4"				
		S-604 Lockwasher 3/8"				
		S-605 Lockwasher 5/16"				

# MISCELLANEOUS AND MOUNTING PARTS

08.05  
Page 1  
issued 1-63

Engine Model	Part Number	Part Name	V6	V8	No. Req.	Fig. No.	Ref. No.
		<b>SPACER, FAN</b>					
V6-200, V8-265	143085	Spacer, fan (Std. CI)	1	1			
V8-265	119211	Spacer, fan (Std. CI)		1			
V6-200	66440	Spacer, fan (Std. CI)	1				

# THERMOSTAT HOUSING

08.07  
Page 1  
issued 1-63

Engine Model	No. Cyl.	Engine Application								Part Number	Part Name	No. Req.	Fig. No.	Ref. No.	Use	Remarks
		B	BI	CI	I	IP	P	M	G							
THERMOSTAT HOUSING																
V6-200	6	X								157646	Housing, thermostat	1			Std.	
V6-200	6			X						155983	Housing, thermostat	2			Std.	
V8-265	8	X								157647	Housing, thermostat	1	3	1	Std.	
V8-265	8			X						155983	* Housing, thermostat	2			Std.	
VT8-370	8							X		157129	Housing, thermostat	1			Std.	
V6-200	6	X								150019	Housing, thermostat	1			Opt.	Has tapped hole to install 45° angle valve for heater take-off.
V6-200	6	X								160208	Housing, thermostat	1			Opt.	Same as 157646 except outlet flange rotated to clear 21 1/4" fan center.
V6-200	6	X								160250	Housing, thermostat	1			Opt.	Same as 157646 except has 3/4" N.P.T. in 1 5/8" dia. boss.
V6-200	6	X								152438	Housing, thermostat	1			Opt.	By-pass blocked for remote torque converter cooler.
V8-265	8	X								152744	Housing, thermostat	1			Opt.	
V8-265	8	X								160209	Housing, thermostat	1			Opt.	Same as 160208 except has by-pass.
V8-265	8	X								160249	Housing, thermostat	1			Opt.	Same as 157647 except with 3/4" N.P.T. in 1 5/8" dia. boss.
* Not interchangeable No. 1 and No. 2 design.																

\* Not interchangeable No. 1 and No. 2 design.

COMPONENT PARTS FOR ASSEMBLIES ARE SHOWN ON THE FOLLOWING PAGES.

## WATER CONNECTIONS

Issued 1-65																
Engine Model	No. Cyl.	Engine Application								Part Number	Part Name	No. Req.	Fig. No.	Ref. No.	Use	Remarks
		B	BI	CI	I	IP	P	M	G							
<b>WATER CONNECTIONS</b>																
V6-200	6	X								140347	Connection, water outlet	2	3	2	Std.	
V8-265	8	X								140347	Connection, water outlet	2	3	2	Std.	
V6-200	6	X								BM-77717	Connection, water crossover	1			Std.	Straight out to rear.
V8-265	8	X								BM-77718	Connection, water	1			Std.	Straight out to rear.
V6-200	6			X						140348	Cover, water outlet	2			Std.	
V8-265	8			X						140348	Cover, water outlet	2			Std.	
V6-200	6			X						158149	Connection, water	1			Std.	
V8-265	8			X						158149	Connection, water	1			Std.	
VT8-370	8							X		157130	Connection, water	1			Std.	
VT8-370	8							X		157131	Connection, water	1			Std.	
V6-200, V8-265	6,8	X								156870	Connection, water outlet	1			Opt.	Routes tube over gear cover low on the L.B. side.
V6-200, V8-265	6,8	X								156866	Connection, water	1			Opt.	Routes tube behind gear cover to clear a direct driven steering pump.
										156867	Connection, water	1			Opt.	
V6-200, V8-265	6,8	X								160216	Connection, water outlet	1			Opt.	Outlet straight up.
V6-200, V8-265	6,8	X								159575	Connection, water outlet	1			Opt.	Use with Vickers VT-M-27-LI pump.

# THERMOSTAT

08.07.2  
Page 3  
issued 1-63

Engine Model	Part Number	Part Name		No. Req.	Fig. No.	Ref. No.
		<b>THERMOSTAT</b>	V6	V8		
V6-200, V8-265	140669 *	Thermostat (173° - 185° F)	1	1	3	3
V6-200, V8-265	135675	Thermostat (170° - 185° F) (CI)	2	2		
VT8-370-M	146076	Thermostat (160° - 175° F)		1		
VT8-370-M	158313	Support, thermostat housing		1		

# MISCELLANEOUS AND MOUNTING PARTS

Engine Model	Part Number	Part Name		No. Req.	Fig. No.	Ref. No.
<b>CLAMP, HOSE</b>			V6	V8		
V6-200, V8-265, V8-370-M	43828-A *	Clamp, hose, thermostat housing outlet	4	4	3	4
V6-200, V8-265, V8-370-M	43828-B *	Clamp, hose, water crossover pipe	4	4	3	5
V8-370-M	43828-D	Clamp, hose (For 157131 connection)		2		
V8-370-M	68152	Clamp, hose		2		
<b>COCK, DRAIN</b>						
V6-200, V8-265	S-962-E	Cock, drain	1	1	3	6
<b>COVER</b>						
V6-200, V8-265	147729	Cover, housing (2 1/4" water outlet)	1	1	3	7
V6-200, V8-265	158767	Cover, housing (Also used as lifting bracket)	1	1		
V6-200, V8-265	158006	Cover, water connection (Std. CI)	2	2		
V6-200, V8-265	158007	Cover, water outlet (Std. CI)	2	2		
V6-200, V8-265	155285	Cover, housing (2 1/4" water outlet. Locates center line of the outlet 1.85" above top surface of housing at 20° toward centerline of engine in a horizontal plane.	1	1		
V6-200, V8-265	140325	Cover, housing (2" water outlet)	1	1		
V6-200, V8-265	154589	Cover, housing (2" water outlet forward and in)	1	1		
* Interchangeable No. 1 and No. 2 design.						





# MISCELLANEOUS AND MOUNTING PARTS

Engine Model	Part Number	Part Name	No. Req.	Fig. No.	Ref. No.
<b>PIPES</b>			V6	V8	
V6-200, V8-265	140687 *	Pipe, water crossover (Std.)	1	1	3 13
V6-200, V8-265	158157	Pipe, water crossover (CI)	1	1	
V6-200, V8-265	158158	Pipe, water crossover (CI)	1	1	
VT8-370-M	157133	Pipe, water by-pass		1	
V6-200, V8-265	156173	Pipe, water crossover (low contour on L.B. side)	1	1	
V6-200, V8-265	156868	Tube, water crossover (Routes behind the gear cover to clear a direct driven steering pump)	1	1	
V6-200, V8-265	156869	Tube, water crossover (Routes over the gear cover low on the L.B. side)	1	1	
<b>HARDWARE</b>					
	S-931-C	Bushing			
	S-102-D	Capscrew 3/8-16, UNC-2A 3"		3	14
	S-103-D	Capscrew 3/8-16, UNC-2A 1 1/4"			
	S-112	Capscrew 3/8-16, UNC-2A 1"		3	15
	S-117	Capscrew 3/8-16, UNC-2A 3/4"			
	S-120	Capscrew 3/8-16, UNC-2A 1 3/4"		3	16
	S-163	Capscrew 3/8-16, UNC-2A 3 1/4"			
	108707	Capscrew 3/8-16, UNC-2A 1 1/2"			
	69318-A	Elbow			
	S-604	Lockwasher 3/8"		3	17
	S-945	Nipple			
	S-908	Plug, pipe 3/8"			
	S-915-A	Plug, pipe 1/2"		3	18
	S-985-A	Plug, pipe 1/4"		3	19
	S-1042-A	Tee			
	S-930-E	Tee			
	S-602	Washer 3/8"			

# CORROSION RESISTOR

08.08  
Page 1  
issued 1-63

Engine Model	No. Cyl.	Engine Application								Part Number	Part Name	No. Req.	Fig. No.	Ref. No.	Use	Remarks
		B	BI	CI	I	IP	P	M	G							
											<b>CORROSION RESISTOR</b>					
V6-200	6	X		X						132716	Resistor, corrosion	1	4		Std.	
V8-265	8	X		X						132716	Resistor, corrosion	1	4		Std.	
VT8-370	8							X		132716	Resistor, corrosion	1	4		Std.	

COMPONENT PARTS FOR ASSEMBLIES ARE SHOWN ON THE FOLLOWING PAGES.

# **CORROSION RESISTOR**

Part Number	Part Name	No. Req.	Fig. No.	Ref. No.	Part Number	Part Name	No. Req.	Fig. No.	Ref. No.
	<b>CORROSION RESISTOR</b>	V6 V8							
	GROUP A								
2716	Resistor, corrosion	1 1	4						
32717	Body, corrosion resistor	1 1	4	1					
0223	Capscrew, cover to body	2 2	4	2					
32718	Cover, corrosion resistor	1 1	4	3					
32732	Element, corrosion resistor	1 1	4	4					
32730	Gasket, cover	1 1	4	5					
32719	Plate, corrosion resistor	2 2	4	6					
8675	Plug, drain	1 1	4	7					
32731	Spring, corrosion resistor	1 1	4	8					
0233	Washer, cover to body	2 2	4	9					

PARTS INDENTED ARE INCLUDED IN THE PART UNDER WHICH THEY ARE INDENTED

# MISCELLANEOUS AND MOUNTING PARTS

08.08.1  
Page 3  
issued 1-63

Engine Model	Part Number	Part Name	V6	V8	Fig. No.	Ref No.
<b>BRACKET</b>						
V6-200, V8-265	156474	Bracket, mounting	1	1		
	160368	Bracket, mounting (mounts filter on top of engine)	1			
VT8-370-M	156846	Bracket		1		
<b>CLAMP, HOSE</b>						
V6-200, V8-265, VT8-370-M	69465	Clamp, hose	1	1		
	43828	Clamp, hose	4	4		
<b>CONNECTOR</b>						
V6-200, V8-265, VT8-370	134325	Connector, elbow	2	2		
<b>HOSE</b>						
VT8-370	144018	Hose		1		
	139479	Hose		1		
<b>SPACERS</b>						
VT8-370-M	68368	Spacer		2		
<b>VALVE</b>						
V6-200, V8-265, VT8-370-M	157098	Valve		1		
<b>HARDWARE</b>						
	S-141	Capscrew 3/8-16, UNC-2A 2 3/4"				
	S-167-A	Capscrew 1/4-20, UNC-2A 7/8"				
	S-600	Lockwasher 1/4"				
	S-604	Lockwasher 3/8"				
	S-631	Washer, plain 9/32"				

# TORQUE CONVERTER COOLER

08.09  
Page 1  
issued 1-63

Engine Model	No. Cyl.	Engine Application								Part Number	Part Name	No. Req.	Fig. No.	Ref. No.	Use	Remarks
		B	BI	CI	I	IP	P	M	G							
											<b>TORQUE CONVERTER COOLER</b>					
VT8-370	8							X		111957	Cooler, torque converter	1			Std.	
VT8-370	8							X		160068	Cooler, oil	1			Std.	For Marine gear

COMPONENT PARTS FOR ASSEMBLIES ARE SHOWN ON THE FOLLOWING PAGES.

# MISCELLANEOUS AND MOUNTING PARTS

Engine Model	Part Number	Part Name	No. Req.	Fig. No.	Ref. No.
<b>TORQUE CONVERTER COOLER</b>					
VT8-370	160066	Bracket, cooler	1		
	43828-D	Clamp, hose	2		
	159179	Cover, cooler (rear)	1		
	159178	Cover, cooler (front)	1		
	103535	Flange, cooler	2		
	68210	Gasket, connection	2		
	137076	Gasket, front cover	1		
	68209	Gasket	2		
	159312	Hose	1		
<b>CAPSCREWS</b>					
	S-103-D	Capscrew 3/8-16, UNC-2A 1 1/4"			
	S-115	Capscrew 5/16-18, UNC-2A 7/8"			
	S-126	Capscrew 3/8-16, UNC-2A 2 1/2"			
	S-137	Capscrew 3/8-16, UNC-2A 2"			
<b>LOCKWASHERS</b>					
	S-604	Lockwasher 3/8"			
	S-605	Lockwasher 5/16"			

# MISCELLANEOUS AND MOUNTING PARTS

08.09.1  
Page 3  
issued 1-63

Engine Model	Part Number	Part Name		No. Req.	Fig. No.	Ref. No.
			V6	V8		
		<b>GEAR OIL COOLER</b>				
VT8-370	43828-C	Clamp, hose		4		
	160068	Cooler, gear		1		
	159180	Cover		1		
	159181	Cover		1		
	63241-J	Hose		2		
	160059	Support		1		
	160060	Support		1		
	BM-79033	Tube, heat exchanger		1		

# HEAT EXCHANGER

08.10  
Page 1  
issued 1-63

Engine Model	Part Number	Part Name		No. Req.	Fig. No.	Ref. No.
		HEAT EXCHANGER	V6	V8		
VT8-370-M	159306	Brace		1		
	135588	Cap, filler		1		
	43828-C	Clamp, hose		2		
	S-962-E	Cock, drain		2		
	157128	Connection, outlet		1		
	137059	Cover		1		
	159179	Cover, engine oil cooler, rear		1		
	68241	Electrode, zinc		3		
	137077	Element		1		
	137067	Gasket, support cover to heat exchanger		1		
	137076	Gasket, outlet connection		1		
	158330	Gasket, cover to outlet connection		1		
	137155	Gasket, element to housing		1		
	135585	Gasket, pressure valve		1		
	63241-L	Hose		1		
	137052	Housing		1		
	S-2902	Neck		1		
	137074	"O" ring		1		
	137075	"O" ring		1		
	157135	Support		1		
	BM-78488	Tube and flange		1		
	135587	Valve, pressure		1		



# MISCELLANEOUS AND MOUNTING PARTS

Engine Model	Part Number	Part Name	No. Req.	Fig. No.	Ref. No.
<b>HARDWARE</b>					
<b>CAPSCREWS</b>					
	S-102-D	Capscrew 3/8-16, UNC-2A 3"			
	S-103-D	Capscrew 3/8-16, UNC-2A 1 1/4"			
	S-112	Capscrew 3/8-16, UNC-2A 1"			
	S-172-B	Capscrew 3/8-16, UNC-2A 1 1/8"			
	103023	Capscrew 7/16-14, UNC-2A 1"			
<b>LOCKWASHERS</b>					
	S-604	Lockwasher 3/8"			
	S-607	Lockwasher .190"			
	S-610	Lockwasher 7/16"			
<b>NUTS</b>					
	S-223	Nut 3/8"			
	S-225	Nut 3/8"			
<b>SCREWS</b>					
	131449	Screws No. 10-24, 1/2"			
	142686	Screw, adjusting			
<b>WASHERS</b>					
	S-602	Washer 13/32"			
	S-622	Washer 15/32"			

# SEA WATER PUMP

08.11  
Page 1  
issued 1-63

Engine Model	No. Cyl.	Engine Application								Part Number	Part Name	No. Req.	Fig. No.	Ref. No.	Use	Remarks
		B	BI	CI	I	IP	P	M	G							
VI8-370	8							X		21731	Pump, water	1			Std.	Jabsco, Model 3570

COMPONENT PARTS FOR ASSEMBLIES ARE SHOWN ON THE FOLLOWING PAGES.

# SEA WATER PUMP

Part Number	Part Name	No. Req.	Fig. No.	Ref. No.	Part Number	Part Name	No. Req.	Fig. No.	Ref. No.
	<b>SEA WATER PUMP</b>	V6 V8							
21731	Pump, sea water	1							
102661	Bearing, ball	1							
102660	Body, pump	1							
130756	Cam	1							
105598	Cover, end	1							
130761	Ferrule	1							
105594	Gasket, cover	1							
130765	Gasket, seal	1							
21601-R	Impeller, pump (hot water)	1							
S-327	Key, shaft	1							
130762	"O" ring	1							
130757	Pin, dowel	1							
S-16255	Ring, snap	1							
102665	Ring, snap	1							
21601-A	Screw, filister head	6							
130763	Seal	1							
S-16103	Seal	1							
112054	Seal, bearing	1							
112001	Seal, splined	1							
130764	Seat, seal	1							
102664	Shaft	1							
21601-H	Slinger	1							
130759	Washer	1							
130760	Washer	1							
130758	Wearplate	1							
151898	Impeller (cold water)	1							

PARTS INDENTED ARE INCLUDED IN THE PART UNDER WHICH THEY ARE INDENTED

# MISCELLANEOUS AND MOUNTING PARTS

08.11.1  
Page 3  
issued 1-63

Engine Model	Part Number	Part Name	No. Req.	Fig. No.	Ref. No.
		<b>BELTS</b>	V6	V8	
VT8-370	154318	Belts, sea water pump and water pump		2	
		<b>BRACKETS</b>			
VT8-370	158325	Bracket, pump		1	
		<b>CONNECTIONS</b>			
VT8-370	120789	Connection, inlet		1	
		<b>GASKETS</b>			
VT8-370	70186	Gasket, pump		2	
		<b>PULLEYS</b>			
VT8-370	159739	Pulley, sea water pump		1	
		<b>TUBES</b>			
VT8-370	BM-78054	Tube and flange		1	
		<b>HARDWARE</b>			
		<b>CAPSCREWS</b>			
	S-103-D	Capscrew 3/8-16, UNC-2A 1 1/4"			
	S-112	Capscrew 3/8-16, UNC-2A 1"			
		<b>LOCKWASHER</b>			
	S-604	Lockwasher 3/8"			
		<b>NUTS</b>			
	S-221	Nut 3/8"			
		<b>WASHERS</b>			
	S-658	Washer, plain 21/32"			

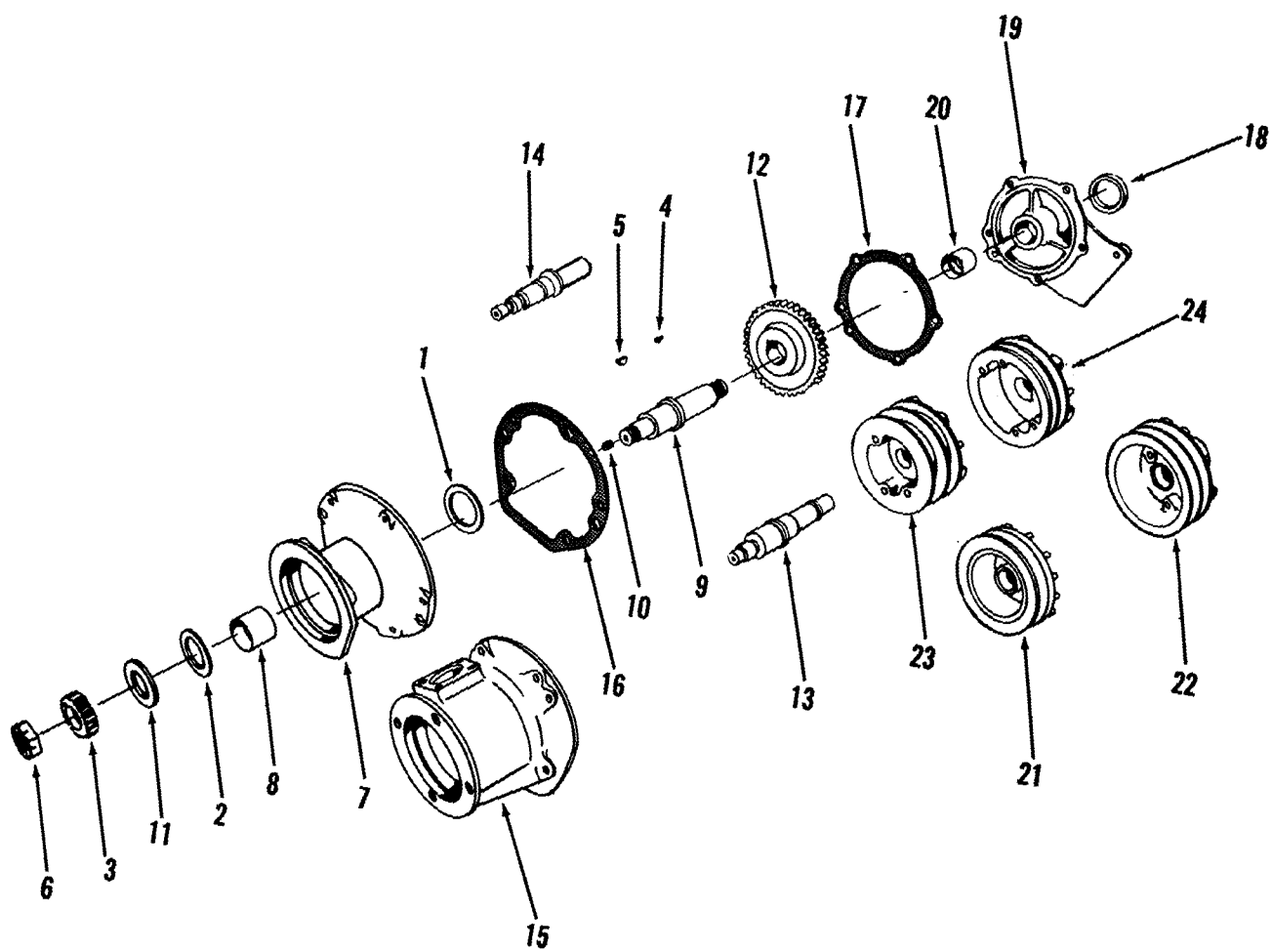
**MISCELLANEOUS AND MOUNTING PARTS**

Engine Model	Part Number	Part Name		No. Req.	Fig. No.	Ref. No.
VT8-370-M	146893	KITS, REPAIR Kit, major repair				

# Group 09

*drive  
units*

you own the best . . . repair with the best  
genuine **CUMMINS** parts



FUEL PUMP DRIVE  
Figure 1

# FUEL PUMP DRIVE

09.01  
Page 1  
issued 1-63

Engine Model	No. Cyl.	Engine Application								Part Number	Part Name	No. Req.	Fig. No.	Ref. No.	Use	Remarks
		B	BI	CI	I	IP	P	M	G							
<b>FUEL PUMP DRIVE</b>																
V6-200, V8-265	6,8			X						BM-74957	Drive, fuel pump	1			Std.	Use on engines without compressor.
V6-200	6	X								BM-74524	Drive, fuel pump	1			Opt.	Use on engines without compressor. Same as BM-74957 except has 150079 sh:
V8-265	8	X								BM-74524	Drive, fuel pump	1			Opt.	Rear drive.
V6-200, V8-265	6,8	X								BM-75287	Drive, fuel pump	1			Opt.	Same as BM-74524 less drive gear.
VT8-370	8								X	BM-78129	Drive, fuel pump	1			Std.	Extended drive. Same as BM-74524 except has 154176 shaft.
V6-200, V8-265	6,8									BM-79052	Drive, fuel pump	1			Opt.	Use on engines without compressor, with Woodward governor.
										BM-	Drive, fuel pump	1			Opt.	Same as BM-79052 except has 161079 extended drive shaft for rear mounted pulley.

COMPONENT PARTS FOR ASSEMBLIES ARE SHOWN ON THE FOLLOWING PAGES.



## FUEL PUMP DRIVE

Part Number	Part Name	No. Req.	Fig. No.	Ref. No.	Part Number	Part Name	No. Req.	Fig. No.	Ref. No.
	<b>FUEL PUMP DRIVE</b>	V6V8				<b>FUEL PUMP DRIVE (CONT'D)</b>	V6V8		
	GROUP A					GROUP E			
BM-75287	Drive, fuel pump	1 1							
116388	Bearing, thrust	1 1	1	1					
116389	Bearing, thrust	1 1	1	2					
102975	Coupling, drive	1 1	1	3	BM-79052	Drive, fuel pump and Woodward governor	1 1		
S-308	Key, pulley	1 1	1	4		Bearing, ball	1 1		
S-316	Key, pulley	1 1	1	5	S-16069	Coupling, half	1 1		
105297	Locknut, shaft	1 1	1	6	102974	Gear, fuel pump drive, main	1 1	1	12
BM-73432	Support and bushing (150064)	1 1	1	7	150139	Gear, governor drive	1 1		
116391	Bushing, support	1 1	1	8	151292	Key, gear	1 1		
BM-75286	Shaft and plug (151576)	1 1	1	9	S-306	Nut, shaft	1 1		
					70897	Ring, retaining	1 1		
S-911-B	Plug, pipe	1 1	1	10	103502	Shaft, drive	1 1	1	14
116390	Washer, clamping	1 1	1	11	158763	Spacer, governor drive gear	1 1		
					114644	Support, drive	1 1	1	15
					158764	Washer, plain, shaft	1 1		
					S-670				
	GROUP B					GROUP F			
	Same as Group A except:					Same as Group D except:			
BM-74524	Drive, fuel pump	1 1							
150139	Gear, drive	1 1	1	12					
					BM-	Drive, fuel pump and Woodward governor	1 1		
					161079	Shaft, drive	1 1		
	GROUP C								
	Same as Group A except:								
BM-78129	Drive, fuel pump	1 1							
150139	Gear, drive	1 1	1	12					
154176	Shaft, drive	1 1	1	13					
	GROUP D								
	Same as Group A except:								
BM-74957	Drive, fuel pump	1 1							
150079	Shaft	1 1							
150139	Gear	1 1							

PARTS INDENTED ARE INCLUDED IN THE PART UNDER WHICH THEY ARE INDENTED

# MISCELLANEOUS AND MOUNTING PARTS

09.01.1  
Page 3  
issued 1-63

Engine Model	Part Number	Part Name	V6	No. Req.	V8	Fig. No.	Ref. No.
<b>ADAPTER</b>							
V6-200, V8-265	BM-78416	Adapter, fuel pump drive (159079) (mounts on extended shaft)	1	1			
	147297	Sleeve	1	1			
<b>COVER</b>							
V6-200, V8-265	154915	Cover, fuel pump support (use with 154911 support when drive pulley is omitted)	1	1			
<b>GASKET</b>							
V6-200, V8-265	139845	Gasket, front support to gear cover	1	1	1		16
	139846	Gasket, rear support to gear cover	1	1	1		17
<b>SEAL,OIL</b>							
V6-200, V8-265	146909	Seal, oil (2 3/8" O.D.) Use with extended shaft	1	1			
	140896	Seal, oil (2 1/2" O.D.) Use with extended shaft	1	1	1		18
<b>SUPPORT</b>							
V6-200, V8-265	BM-78027	Support, fuel pump drive (154911)	1	1			
	BM-71356	Support, fuel pump drive (139915)	1	1			
	BM-74038	Support, fuel pump drive (147440)	1	1	1		19
	144800	Bushing, support	1	1	1		20

## FUEL PUMP DRIVE PULLEYS

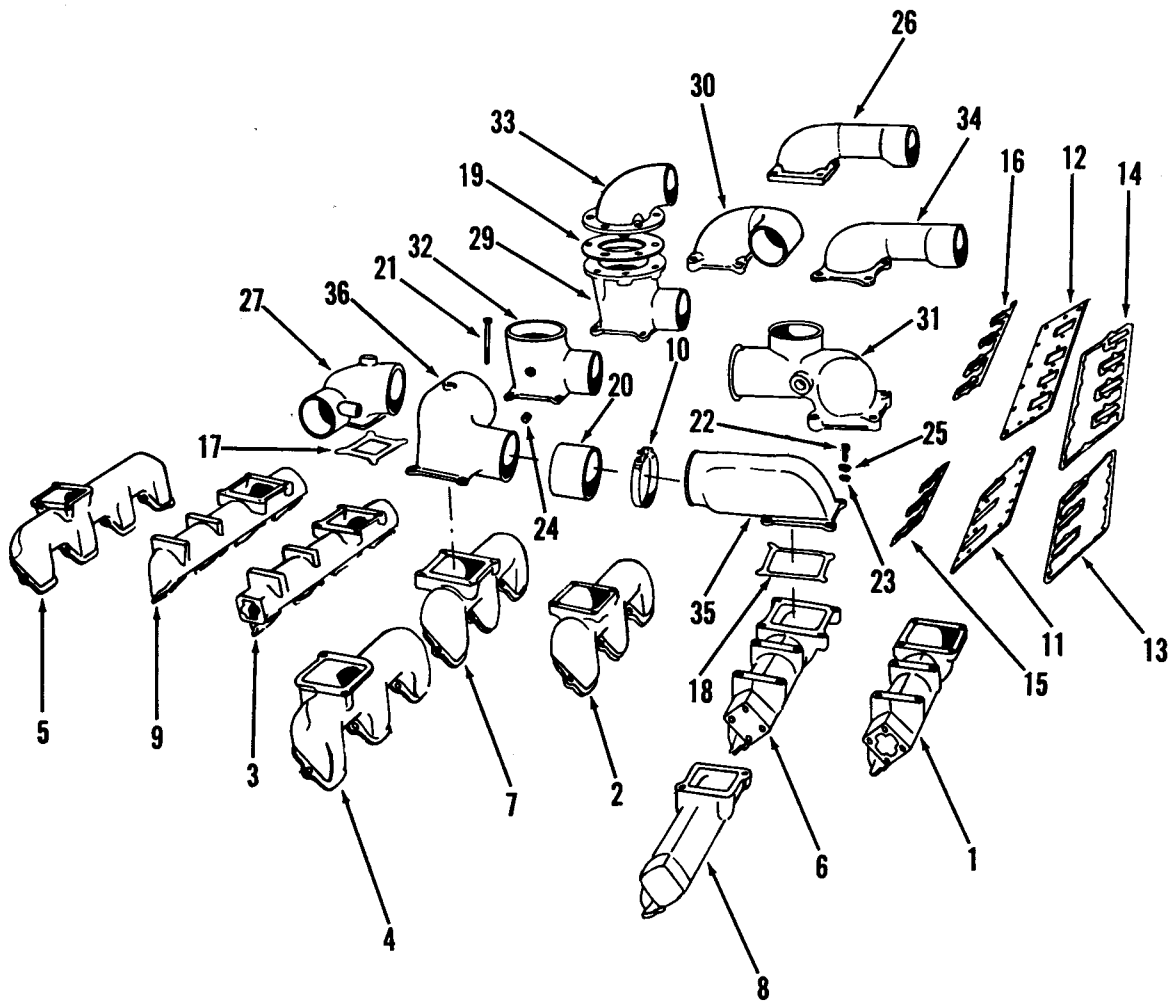
Eng. Mod.	Illus. Ref. No.	Part No.	No. Grooves	Belt Size	Dia.	Remarks
V6	1 21	BM-74076 (151625)	1	3/4"	6"	
V8	1 21	BM-74075 (147262)	1	3/4"	6"	
V6	1 22	BM-74909 (153121)	2	11/16"	7"	For Vickers VT-16 pump. Same as 148693 except timing marks
V8	1 22	BM-74437 (148693)	2	11/16"	7"	For 148694 hydraulic pump
V6						
V8	1 23	BM-77013 (157649)	2	11/16"	7"	Same as 148693 except barring lugs ground down
V6						
V8	1 24	BM-77900 (158153)	2	11/16"	7"	Same as 148693 except has (4) tapped holes
V6						
V8		BM-74072 (151578)	2		9 1/2"	Has special Poly-U belt groove. Requires 151576 shaft and SAE No. 2 or smaller flywheel housing
VT8-370		BM-78499 (157346)	1	3/4"	8 11/32"	Std.

All pulleys contain (1) 147297 sleeve.

# **G**roup 10

***intake  
system***

you own the best . . . repair with the best!  
genuine **CUMMINS** parts



AIR INTAKE MANIFOLDS AND CONNECTIONS  
Figure 1

# AIR INTAKE MANIFOLD

10.01  
Page 1  
issued 1-63

Engine Model	No. Cyl.	Engine Application								Part Number	Part Name	No. Req.	Fig. No.	Ref. No.	Use	Remarks
		B	BI	CI	I	IP	P	M	G							
AIR INTAKE MANIFOLD																
V6-200	6	X								156499	Manifold, intake	1	1	1	Std.	L.B. front not drilled and tapped. Supersedes 155299. Also requires 156350, 156349, 156809 or 156808 connection, 156348 gasket.
V6-200	6	X		X						156498	Manifold, intake	1	1	2	Std.	R.B. Supersedes 154997. Also requires 156350, 156349, 156809 or 156808 connection, 156348 gasket.
V8-265	8	X		X						156497	Manifold, intake	2	1	3	Std.	Supersedes 154998. Also requires connections and gasket listed above.
V8-265	8			X						156497	Manifold, intake	1	1	3	Std.	R.B.
V8-265	8			X						159572	Manifold, intake	1			Std.	L.B.
VT8-370	8							X		156497	Manifold, intake	2	1	3	Std.	
V6-200	6			X						153606	Manifold, intake	1	1	4	Std.	
V6-200	6	X								156506	Manifold, intake	1			Opt.	L.B. front drilled and tapped. Supersedes 155300. Also requires connections and gasket listed above.
V8-265	8	X								153579	Manifold, intake	2	1	5	Opt.	
										156436	Manifold, intake	2			Opt.	
V6-200	6									155299	Manifold, intake	1	1	6	I.R.	L.B. Superseded by 156499.
V6-200	6									154997	Manifold, intake	1	1	7	I.R.	R.B. Superseded by 156498.
V6-200	6									155300	Manifold, intake	1	1	8	I.R.	L.B. Superseded by 156506.
V8-265	8									154998	Manifold, intake	2	1	9	I.R.	Superseded by 156497.

COMPONENT PARTS FOR ASSEMBLIES ARE SHOWN ON THE FOLLOWING PAGES.

## AIR INTAKE MANIFOLD CONNECTION

Issued 7-65																
Engine Model	No. Cyl.	Engine Application								Part Number	Part Name	No. Req.	Fig. No.	Ref. No.	Use	Remarks
		B	BI	CI	I	IP	P	M	G							
<b>CONNECTION</b>																
V6-200	6	X		X						156350	Connection, air crossover	1	1	26	Std.	Supersedes 155407. Use with 156497, 156498, 156499, 156506, 156436 manifolds.
V8-265	8	X		X						156350	Connection, air crossover	1	1	26	Std.	
V6-200	6	X								156349	Connection, air intake	1	1	27	Std.	Supersedes 155294. Use with manifolds listed above.
V8-265	8	X								156349	Connection, air intake	1	1	27	Std.	
V6-200 V8-265	6,8	X		X						156352	Connection, air intake	1	1	27	Std.	
V8-265	8	X								156358	Connection, air intake	1			Opt.	Same as 155294 except has provisions for air compressor tube.
VT8-370	8							X		157112	Connection, air intake	1			Std.	
V6-200	6	X								156809	Connection, air intake	1	1	29	Opt.	Supersedes 154901. Use with manifolds listed above.
V6-200, V8-265	6,8									155306	Connection, air intake	1	1	30	Opt.	L.B.
										155307	Connection, air intake	1	1	31	Opt.	R.B.
		X								156808	Connection, air intake	1	1	32	Opt.	Points straight up. Supersedes 158049. Use with manifolds listed above.
										156351	Connection, air intake	1	1	33	Opt.	Mounts on 154901 crossover, points 45° toward front and away from R.B. of engine.
										159084	Connection, air crossover	1	1	34	Opt.	R.B. Like 155407 except with hose connection for air compressor intake hose.
										159085	Connection, air crossover	1	1	26	Opt.	Similar to 156350 except with hose connection for air compressor intake hose.
										155407	Connection, air crossover	1	1	35	I.R.	Superseded by 156350.
										155294	Connection, air intake	1	1	36	I.R.	Superseded by 156349.

COMPONENT PARTS FOR ASSEMBLIES ARE SHOWN ON THE FOLLOWING PAGES.

# AIR INTAKE MANIFOLD CONNECTION

10.01.1  
Page 3  
issued 1-63

Engine Model	No. Cyl.	Engine Application								Part Number	Part Name	No. Req.	Fig. No.	Ref. No.	Use	Remarks
		B	BI	CI	I	IP	P	M	G							
											<b>CONNECTION</b>					
										154901	Connection, air intake	1			I.R.	Superseded by 156809.
V6-200	6									158928	Connection, air intake	1			Opt.	R.B. or use when dual air cleaners are used without a crossover between R.B. and L.B.
V6-200	6									158929	Connection, air intake	1			Opt.	L.B. Use when dual air cleaners are used without a crossover between R.B. and L.B.

COMPONENT PARTS FOR ASSEMBLIES ARE SHOWN ON THE FOLLOWING PAGES.



# MISCELLANEOUS AND MOUNTING PARTS

Engine Model	Part Number	Part Name	V6	No. Req.	V8	Fig. No.	Ref. No.
<b>CLAMP, HOSE</b>			V6		V8		
V6-200, V8-265	125740	Clamp, air connection hose	2	2	1		10
<b>PLATES, COVER</b>							
V6-200	154227	Plate, push tube cover	2		1		11
V8-265, VT8-370	154226	Plate, push tube cover			2	1	12
<b>GASKET</b>							
V6-200	151740	Gasket, push tube cover plate	2		1		13
V8-265	151707	Gasket, push tube cover plate			2	1	14
V6-200	154397	Gasket, intake manifold	2		1		15
V8-265	154396	Gasket, intake manifold			2	1	16
V6-200, V8-265, VT8-370	156348	Gasket, air connection (Use with 156349, 156350, 156352, 156809, 156808 connections)	2	2	1		17
	155314	Gasket, air connection (I.R. Use with 155294, 155407, 154746, 158358, 154901, 158049 connections)	2	2	1		18
V8-265	156659	Gasket, air connection (Use with 156351 connection)			1	1	19
<b>HOSE</b>							
V6-200, V8-265	64015	Hose, connection	1	1	1		20
<b>HARDWARE</b>							
	S-105	Capscrew 3/8-16, UNC-2A 3 1/2"				1	21
	S-174-B	Capscrew 3/8-16, UNC-2A 1 3/8"				1	22
	S-604	Lockwasher 3/8"				1	23
	S-911-B	Plug, pipe 1/8"				1	24
	S-602	Washer 13/32"				1	25

# AIR CLEANER

10.04  
Page 1  
issued 1-63

Engine Model	No. Cyl.	Engine Application								Part Number	Part Name	No. Req.	Fig. No.	Ref. No.	Use	Remarks
		B	BI	CI	I	IP	P	M	G							
											<b>AIR CLEANER</b>					
V6-200	6	X								106833	Cleaner, air	1			Std.	12" dia. Dry type
V8-265	8	X								106833	Cleaner, air	1			Std.	12" dia. Dry type
V8-265	8			X						151606	Cleaner, air	1			Std.	Donaclone. 10" dia.
V8-265	8			X						151609	Cleaner, air	1			Std.	Donaclone. 14" dia.

COMPONENT PARTS FOR ASSEMBLIES ARE SHOWN ON THE FOLLOWING PAGES.

# AIR CLEANER

Part Number	Part Name	No. Req.	Fig. No.	Ref. No.	Part Number	Part Name	No. Req.	Fig. No.	Ref. No.
	<b>AIR CLEANER</b>	V6 V8							
	GROUP A								
06833	Cleaner, air (12" diameter)	1 1							
107135	Cover, shell	1 1							
106837	Element assembly	1 1							
107136	Gasket, element	1 1							
107137	Gasket, flange	1 1							
107134	Shell, cleaner	1 1							
	GROUP B								
51609	Cleaner, air	1							
151801	Body, lower	1							
150759	Body, upper	1							
150768	* Cap, restriction	1							
150763	Clamp, body	1							
150771	Clamp, cup	1							
150767	* Clip, cover	1							
150757	Cover, inner	1							
133757	Cover assembly	1							
150772	Cup assembly	1							
150756	Element (P10-0853)	1							
150747	Gasket, cover	1							
150758	Cover	1							
150766	Gasket, element	1							
133763	Gasket, body and cup	2							
152792	* Screw	1							
152793	* Washer	1							
151606	Cleaner, air	1							
151798	Body, lower	1							
150781	Body, upper	1							
133743	Clamp, body and cup	2							
150779	Cover, inner	1							
133737	Cover, assembly	1							
133745	Cup assembly	1							
150778	Element (P10-1066)	1							
150775	Gasket, cover	1							
150780	Cover	1							
150782	Gasket, element	1							
133742	Gasket, body and cup	2							
* Also included in 151606.									

PARTS INDENTED ARE INCLUDED IN THE PART UNDER WHICH THEY ARE INDENTED

# MISCELLANEOUS AND MOUNTING PARTS

10.04.1

Page 3

issued 1-63

Engine Model	Part Number	Part Name	No. Req.	Fig. No.	Ref. No.
<b>ADAPTER</b>			V6	V8	
V6-200, V8-265	106126	Adapter, air cleaner	1	1	
<b>BRACES AND BRACKETS</b>					
V6-200	155318	Brace, bracket	1		
	155308	Bracket, air cleaner (L.B.)	1		
	155309	Bracket, air cleaner (R.B.)	1		
		(155308, 155309, 155318 to be used with dual air cleaners)			
	160093	Brace, air cleaner (use with dual air cleaners without crossover between L.B. and R.B.)	1		
<b>CLAMP, HOSE</b>					
V6-200, V8-265	125741	Clamp, hose	4	4	
V8-265	125740	Clamp, hose (CI) Requires (3) 125741		1	
<b>HOSE</b>					
V6-200, V8-265	103808	Hose, flexible	2	2	
<b>PLATE</b>					
V6-200, V8-265	155317	Plate, bracket (use with dual air cleaners)	2	2	
<b>STRAP</b>					
V6-200, V8-265	105916	Strap, cleaner	2	2	
V6-200	66079	Strap, cleaner (CI)	2		
V8-265	106220	Strap, cleaner (CI)		2	
<b>REDUCER</b>					
V8-265	151613	Reducer (CI)		1	

# TURBOCHARGER

10.06  
Page 1  
issued 1-63

Engine Model	No. Cyl.	Engine Application								Part Number	Part Name	No. Req.	Fig. No.	Ref. No.	Use	Remarks
		B	BI	CI	I	IP	P	M	G							
VT8-370	8								X	BM-78588	TURBOCHARGER Turbocharger	1				Std. T-590. Inverted rear mounted.
VT8-370	8								X	BM-67263	EXHAUST OUTLET CONNECTIONS Connection, exhaust outlet	1				Std.

10.06.1

# TURBOCHARGER

Part Number	Part Name	No. Req.	Fig. No.	Ref. No.	Part Number	Part Name	No. Req.	Fig. No.	Ref. No.
	<b>TURBOCHARGER</b>	V8							
BM-78588	Turbocharger	1							
123797	Bearing, thrust	1							
102912	Capscrew, exhaust to turbine casing	8							
102171	Capscrew, main casing to turbine casing	8							
S-102	Capscrew, front plate to main casing	8							
116437	Capscrew, nozzle ring	4							
S-168-C	Capscrew, spacer	3							
124573	Casing, exhaust	1							
145078	Casing, turbine	1							
BM-57850	Casing, main	1							
125780	Bearing	1							
134368	Casing, main	1							
103307	Plug, pipe	2							
153728	Gasket, heat shield	2							
116269	Locknut, nozzle ring	4							
S-605	Lockwasher, main casing to turbine casing	8							
S-605	Lockwasher, front plate to main casing	8							
S-600	Lockwasher, spacer	3							
141937	Lockplate, exhaust to turbine casing	8							
129516	Orifice, oil restrictor	2							
159224	Plate, diffuser	1							
134365	Plate, front	1							
122658	Plate, oil seal	1							
128936	Plate, name	1							
118349	Plug, oil inlet	1							
118350	"O" ring	1							
116660	Ring, nozzle	1							
BM-78564	Rotor and shaft	1							
*	Impeller	1							
*	Nut	1							
*	Shaft	1							
*	Sleeve	1							
*	Washer	1							
*	Wheel	1							
142129	Retainer, bearing	1							
152869	Ring, oil seal	1							
S-2267	Screw, name plate	4							
S-1400	Screw, diffuser plate	4							
113195	Seal, ring	1							
109392	Seal, diffuser plate	1							
153769	Shield, outer	1							
124650	Shield, inner	1							
101494	Shim, exhaust casing (.005)	AR							
109382	Shim, exhaust casing (.010)	AR							
109383	Shim, exhaust casing (.015)	AR							
123799	Spacer, thrust washer	1							
S-626	Washer, casing to turbine casing	8							
S-626	Washer, plate to main casing	8							

\* Sold in balanced rotor assembly only.

PARTS INDENTED ARE INCLUDED IN THE PART UNDER WHICH THEY ARE INDENTED

# EXHAUST OUTLET CONNECTION

10.06.1  
Page 3  
issued 1-63

Part Number	Part Name	No. Req.	Fig. No.	Ref. No.	Part Number	Part Name	No. Req.	Fig. No.	Ref. No.
	<b>EXHAUST OUTLET CONNECTIONS</b>	V8							
BM-67263	Connection, exhaust Outlet	1							
102912	Capscrew, connection	8							
106322	Gasket, connection	1							
68908	Lockplate, connection	8							
BM-67233	Tube and flange	1							
114020	Coupling, pipe	1							
126566	Flange	1							
127869	Tube	1							

PARTS INDENTED ARE INCLUDED IN THE PART UNDER WHICH THEY ARE INDENTED

# MISCELLANEOUS AND MOUNTING PARTS

Engine Model	Part Number	Part Name	No. Req.	Fig. No.	Ref. No.
<b>BRACES</b>					
VT8-370	157115	Brace, turbocharger	1		
	157114	Brace, turbocharger	1		
<b>BRACKET</b>					
VT8-370	114307	Bracket, tube clamp	1		
<b>CLAMPS</b>					
VT8-370	107460	Clamp, hose	1		
	69911-A	Clamp, hose	3		
<b>CONNECTIONS</b>					
VT8-370	118347	Connection	1		
	118350	"O" ring	1		
<b>ELBOWS</b>					
VT8-370	110048	Elbow	1		
	136838	Elbow	1		
	121229	Elbow	3		
<b>GASKET</b>					
VT8-370	114753	Gasket, turbocharger	1		
<b>LOCKWIRES</b>					
VT8-370	127473	Lockwire, heat blanket	2		
<b>STUDS</b>					
VT8-370	123656	Stud, turbocharger to exhaust manifold	6		



# MISCELLANEOUS AND MOUNTING PARTS

10.06.2  
Page 5  
issued 1-63

Engine Model	Part Number	Part Name	No. Req.	Fig. No.	Ref. No.
		<b>HARDWARE</b>			
		<b>LOCKWASHERS</b>			
	S-112	Capscrew 3/8-16, UNC-2A 1"			
	S-172-B	Capscrew 3/8-16, UNC-2A 1 1/8"			
	108707	Capscrew 3/8-16, UNC-2A 1 1/2"			
		<b>CAPSCREWS</b>			
	S-604	Lockwasher 3/8"			
		<b>NUTS</b>			
	107440	Nut			
	S-225	Nut 3/8"			
		<b>WASHERS</b>			
	S-602	Washer, plain 13/32"			

**MISCELLANEOUS AND MOUNTING PARTS**

Engine Model	Part Number	Part Name		No. Req.	Fig. No.	Ref. No.
		<b>BLANKET</b>		V8		
VT8-370	121896	Blanket, turbocharger heat		1		
	127451	Blanket, turbocharger heat		1		