

price — \$3.50

CUMMINS

**PARTS
BOOK**

- **V6-200 SVC**
- **V8-265 SVC**
- **DIESEL ENGINES**
- **bulletin no. 966950**

price — \$3.50

CUMMINS

**PARTS
BOOK**

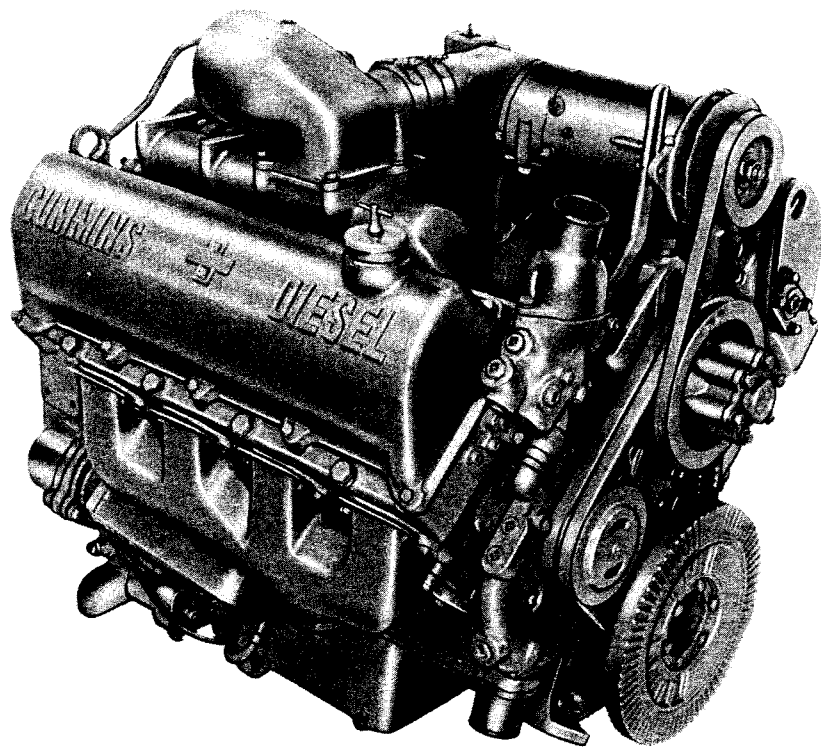
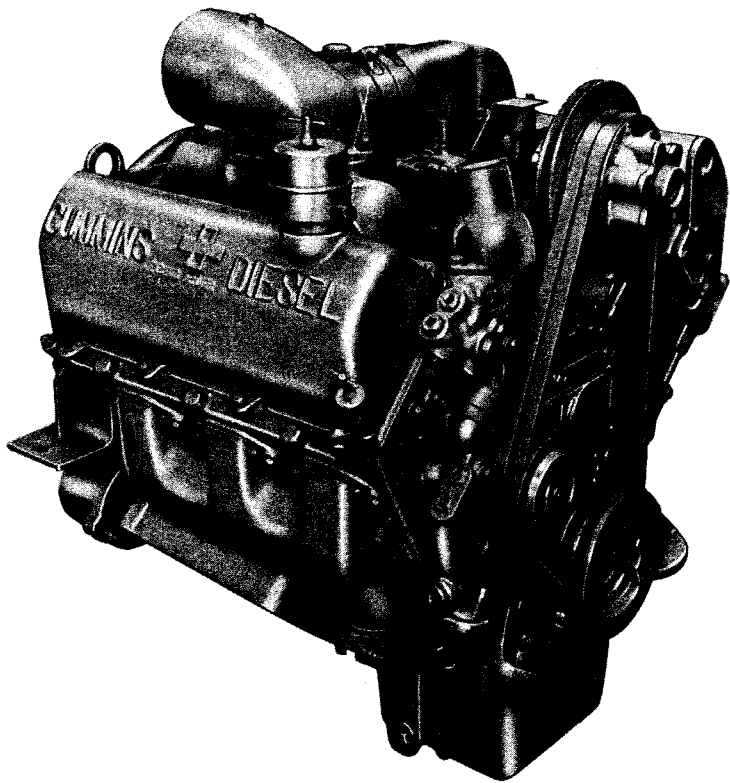
- **V6-200 SVC**
- **V8-265 SVC**
- **DIESEL ENGINES**
- **bulletin no. 966950**

CUMMINS ENGINE COMPANY, INC. COLUMBUS, INDIANA

OVERSEAS FACTORIES

Cummins Engine Company Limited
Shotts, Lanarkshire, Scotland
Cable: CUMSCOT - Shotts

Cummins Diesel Australia
Ringwood, Victoria
Cable: CUMAUS - Melbourne



INTRODUCTION

This book, while inclusive of the V6-200 VIM and the V8-265 VINE engines only, utilizes for the first time the new Master Parts Book format. We did this for two reasons:

- 1) To familiarize you with and to evaluate the new format from a user's standpoint.
- 2) To lay the framework for eventual inclusion of all V6-V8 Series engines into one book.

Because it is new, the Master Parts Book format needs some explanation to acquaint you with its use. Basically, the book is divided into sections corresponding to the engine Parts Group Breakdown that has been traditional in Cummins Service and Parts Literature. The Parts Group Breakdown is described in the Table of Contents that follows this introduction. Within each Parts Group, three basic forms are used to complete the parts breakdown.

FORM I

Form I lists the BM or Part Numbers of all variations of the major assemblies within that Group by engine model and application. Knowing only the engine model and application, you can determine the appropriate major assembly number from several possibilities. This is your first step in ordering parts -- to find the correct assembly number.

In some instances where special equipment has been used on a specific engine, identified by engine serial number, it may be necessary to refer to the Original Engine Parts List that is published concurrently with new engine shipments. The Original Engine Parts List lists engines by serial number and contains all major assemblies for each engine. By identifying the engine model, application, and specific engine serial number before attempting to order parts, the chances of ordering an incorrect part are practically nil. Many persons engaged in ordering parts prefer to check against the Original Engine Parts List before using the Master Parts Book to prevent unnecessary errors.

The first two columns of Form I are self-explanatory -- Column 1 lists Engine Models (V6-200, V8-265); Column 2 lists Number of Cylinders (6, 8). Column 3 lists the following letter symbols which, when added to a specific engine model, indicates the general application in which the engine is used:

<u>Letter</u>	<u>Application</u>
B	Automotive
BI	Industrial, Off-Highway (Usually without air compressor)
CI	Construction Industry
I	Industrial (Stationary Mounting)
IP	Industrial Power Unit (Stationary Mounting with radiator)
P	Power Unit (Same as IP plus hood and clutch)
M	Marine (Normally, heat exchanger cooled)
G	Generator Unit (AC or DC)

The engine model designation is formed by combining the basic engine model, and engine application designation. Example:

<u>Basic Engine</u>	+	<u>Engine Application</u>	=	<u>Engine Model</u>
V6-200		B		V6-200-B

Column 4 lists the assembly number. This may be a simple Part Number or BM (Bill of Materials) number if the assembly can be broken down into component parts. The part number appearing in parenthesis () following a "BM" number is for identification purposes only, except where that same number appears in the parts breakdown under the "BM" number involved, in which case it can be ordered separately. Column 5 lists the descriptive name of the major assembly;

Column 6, the number of parts required per engine; Column 7, the figure number of the illustrated part (located at the beginning of each Parts Group); and Column 8, the number of the part as shown within the illustration. Column 9 lists one of the following letter symbols which indicates the status of the assembly used on a particular engine application:

STD --- Standard (Assembly normally used in production)
OPT --- Optional (Other than standard)
IR --- Identical Replacement (Superseded except when used to replace an identical item)

Column 10, the Remarks Column, gives additional historical description of the assembly as a further aid in identification.

FORM II

Form II is used to break down the major assemblies listed in Form I into their component parts. Parts indented are included in the major assembly under which they are indented. This form does not include mounting parts. (Mounting parts as used in this context are hardware, gaskets, etc., required to mount one major assembly to another major assembly. Items of this nature that are listed in Form II includes only those necessary to assemble the component parts into a major assembly.

FORM III

Form III lists assembly mounting parts, as described above, and miscellaneous parts by engine model. Where practical, parts made from the same casting pattern are tabulated to show differences in machining.

FORM IV

Form IV is used to tabulate certain parts and/or assemblies having similar component part descriptions but having different part numbers.

In addition to the four major forms described above, the Master Parts Book also contains a Numerical Index which lists all part numbers in numerical sequence and references the Group and Page numbers where they can be found.

This completes the Master Parts Book format. In conclusion, let us admit that any Parts Book that attempts to include as much information as we contemplate here, may seem complicated. We have attempted to keep it as simple as possible within the demands and limitations imposed upon us. We feel that, with a thorough understanding of the format and normal usage, most complications will be eliminated. However, we always welcome any suggestions for improving the presentation of our Parts Information.

TABLE OF

Contents

DESCRIPTION	GROUP
ENGINE BLOCK	01
cylinder block	01.01
cylinder liner	01.01.1
cylinder liner kit tabulation in group 01.05.1	
miscellaneous and mounting parts	01.01.3
crankshaft	01.02
main bearings	01.02.1
vibration damper	01.02.2
crankshaft pulley	01.02.3
adapter, vibration damper	01.02.4
spacer, vibration damper	01.02.5
miscellaneous and mounting parts	01.02.6
connecting rod and bushing assembly	01.04
bearing, connecting rod	01.04.1
miscellaneous and mounting parts	01.04.2
piston assemblies	01.05
miscellaneous and mounting parts	01.05.1
piston rings	01.05.2
rear and front covers	01.06
miscellaneous and mounting parts	01.06.1
camshaft	01.07
camshaft gear	01.07.1
miscellaneous and mounting parts	01.07.2
gear cover, plate and housing	01.09
miscellaneous and mounting parts	01.09.1
CYLINDER HEAD	02
cylinder head	02.01
gasket, cylinder head	02.01.1
cylinder head gasket sets listed in group 17.02	
miscellaneous and mounting parts	02.01.2

TABLE OF CONTENTS (Cont'd)

DESCRIPTION	GROUP
ROCKER LEVER HOUSING - - - - -	03
rocker lever, rocker lever housing - - - - -	03.01
cover, rocker lever housing and cylinder head - - - - -	03.01.1
miscellaneous and mounting parts - - - - -	03.01.2
crankcase breather - - - - -	03.02
CAM FOLLOWER HOUSING - - - - -	04
tappets, housing and levers - - - - -	04.01
miscellaneous and mounting parts - - - - -	04.01.1
push rods - - - - -	04.02
FUEL SYSTEM - - - - -	05
	06
LUBRICATING SYSTEM - - - - -	07
oil pan - - - - -	07.01
miscellaneous and mounting parts - - - - -	07.01.1
dipstick and tubes - - - - -	07.02
lubricating oil filter - - - - -	07.03
miscellaneous and mounting parts - - - - -	07.03.1
lubricating oil cooler - - - - -	07.05
miscellaneous and mounting parts - - - - -	07.05.1
lubricating oil pump - - - - -	07.06
miscellaneous and mounting parts - - - - -	07.06.1
COOLING SYSTEM - - - - -	08
water pump - - - - -	08.01
pulley, water pump - - - - -	08.01.1
miscellaneous and mounting parts - - - - -	08.01.2
belts listed in group 17.05	
fans - - - - -	08.02
fan hubs - - - - -	08.03
fan brackets - - - - -	08.04
miscellaneous and mounting parts - - - - -	08.04.1

TABLE OF CONTENTS (Cont'd)

DESCRIPTION	GROUP
COOLING SYSTEM (cont'd)	08
fan spacers	08.05
thermostat housings	08.07
water connections	08.07.1
thermostat	08.07.2
miscellaneous and mounting parts	08.07.3
corrosion resistor	08.08
miscellaneous and mounting parts	08.08.1
torque converter cooler	08.09
miscellaneous and mounting parts	08.09.1
heat exchanger	08.10
miscellaneous and mounting parts	08.10.1
DRIVE UNIT	09
fuel pump and/or compressor drive	09.01
miscellaneous and mounting parts	09.01.1
drive pulleys	09.03
INTAKE SYSTEM	10
air intake manifold	10.01
connection, air intake manifold	10.01.1
miscellaneous and mounting parts	10.01.2
air cleaner	10.04
miscellaneous and mounting parts	10.04.1
turbocharger	10.06
outlet connections	10.06.1
miscellaneous and mounting parts	10.06.2
EXHAUST SYSTEM	11
exhaust manifold	11.01
miscellaneous and mounting parts	11.01.1
mufflers and silencers	11.02
miscellaneous and mounting parts	11.02.1
AIR STARTING, BRAKING AND STEERING	12
air compressor	12.01
miscellaneous and mounting parts	12.01.2
auxiliary pumps	12.04
miscellaneous and mounting parts	12.04.1

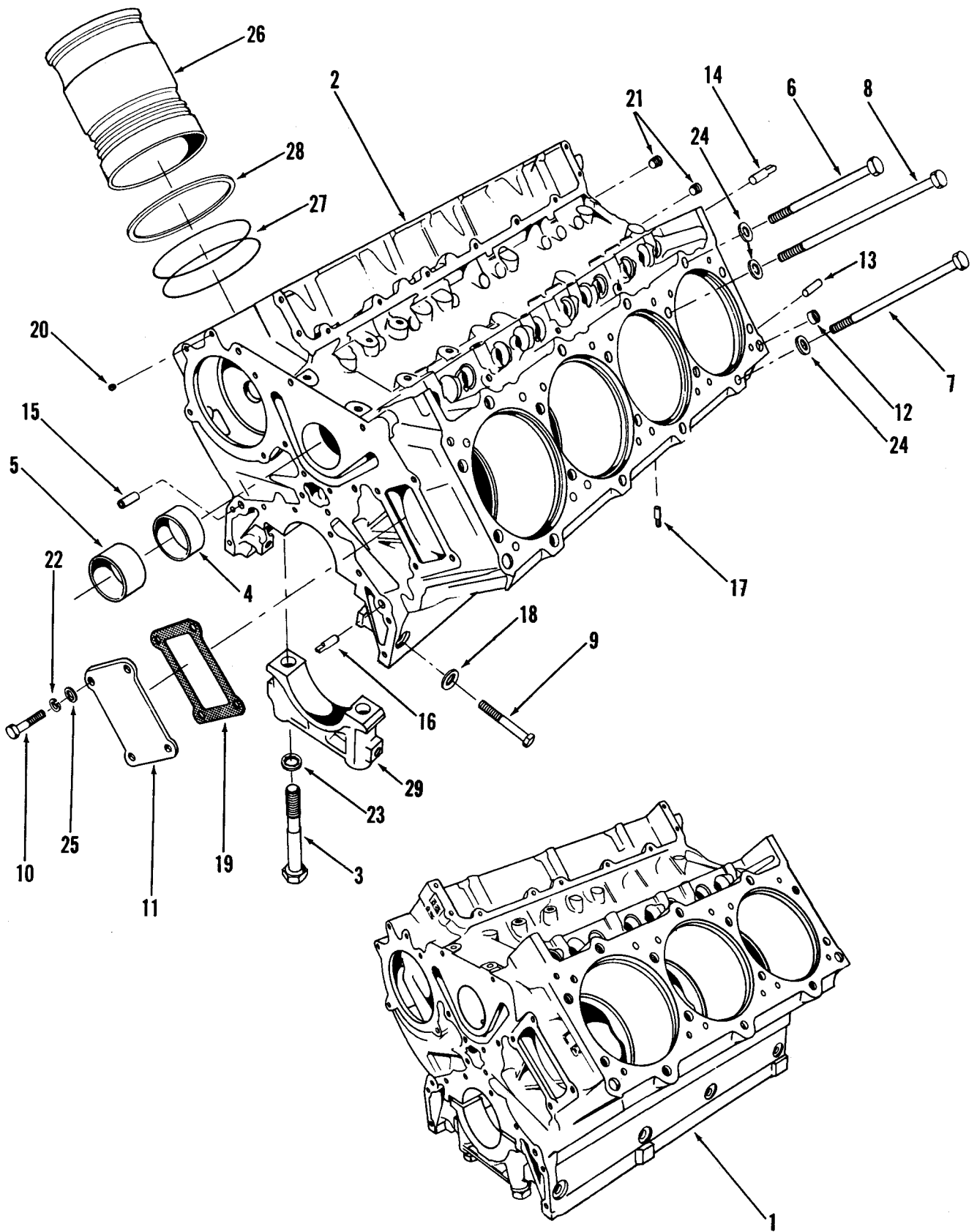
TABLE OF CONTENTS (Cont'd)

DESCRIPTION	GROUP
ELECTRICAL EQUIPMENT	13
alternator and generator	13.01
regulator	13.02
starting motor	13.03
relay	13.04
switches	13.05
pulleys	13.06
miscellaneous and mounting parts	13.07
application charts	13.08
INSTRUMENTS AND GAUGES	15
tachometer and shaft	15.01
ENGINE MOUNTING AND ADAPTATION	16
flywheel housing	16.01
miscellaneous and mounting parts	16.01.1
flywheel and ring gear	16.02
miscellaneous and mounting parts	16.02.1
front engine support	16.03
miscellaneous and mounting parts	16.03.1
clutch and reverse gear	16.05
miscellaneous and mounting parts	16.05.1
MISCELLANEOUS	17
engine gasket sets	17.01
cylinder head gasket sets	17.02
fuel pump gasket set	17.03
miscellaneous gasket sets	17.04
belts	17.05
lifting brackets	17.06
NUMERICAL INDEX	

Group 01

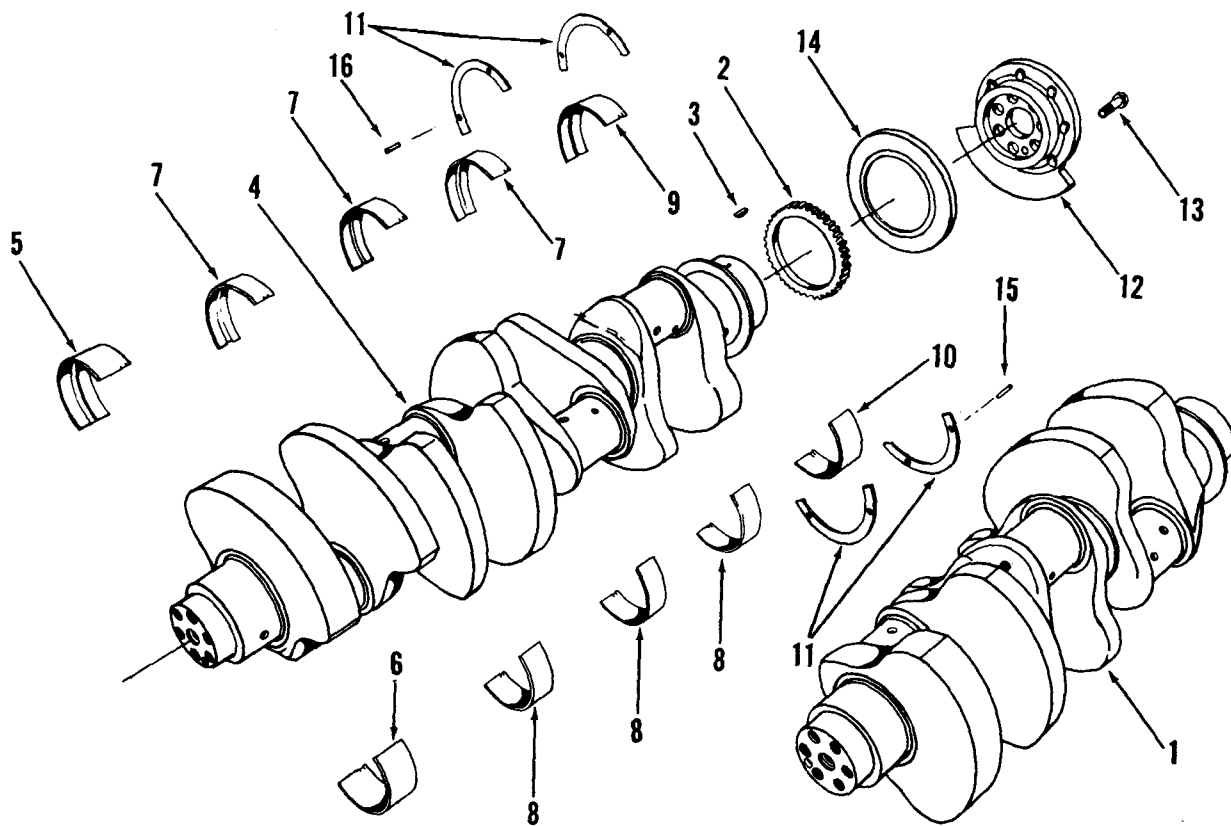
engine block

you own the best . . . repair with the best!
genuine **CUMMINS** parts



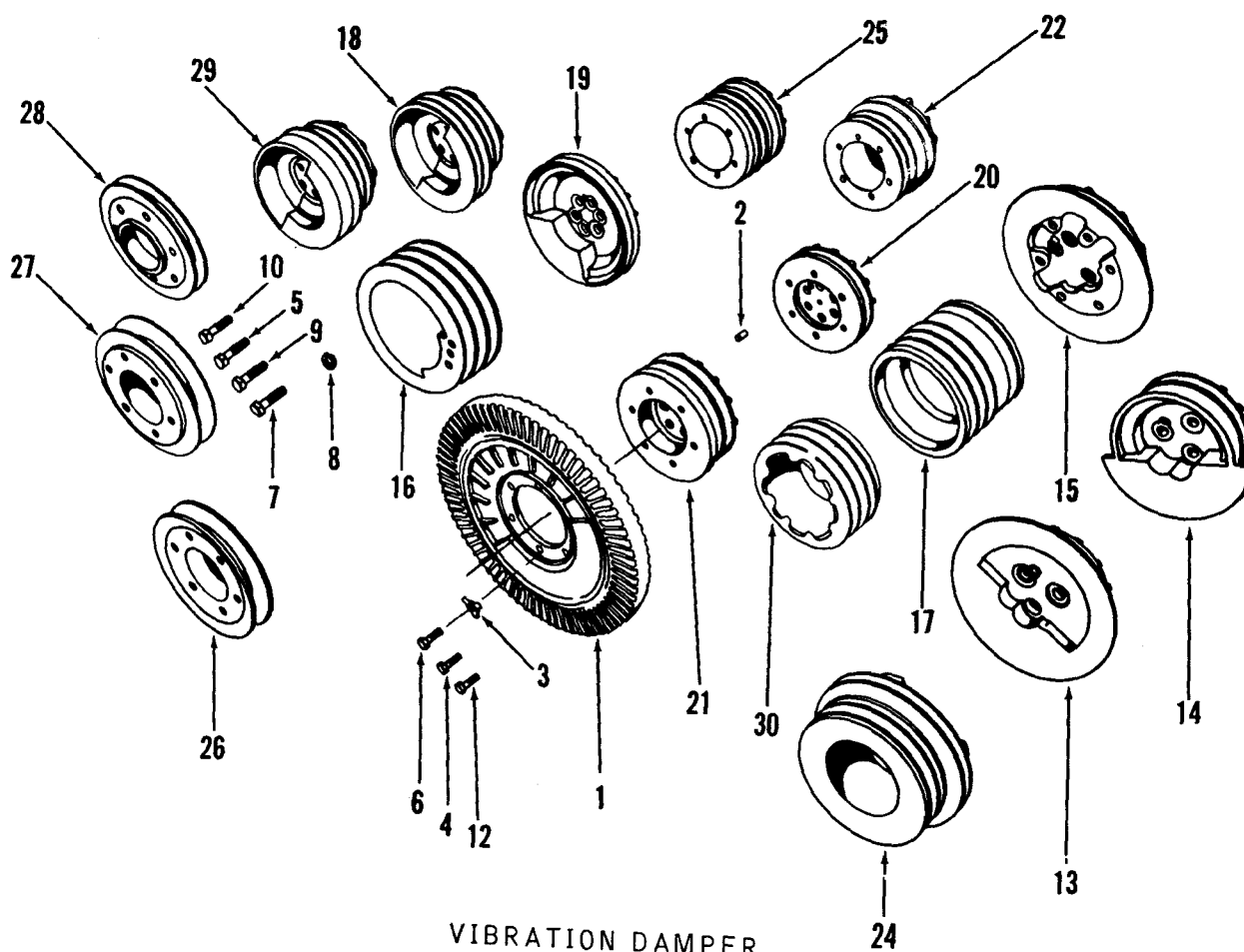
CYLINDER BLOCK
Figure 1

6207165



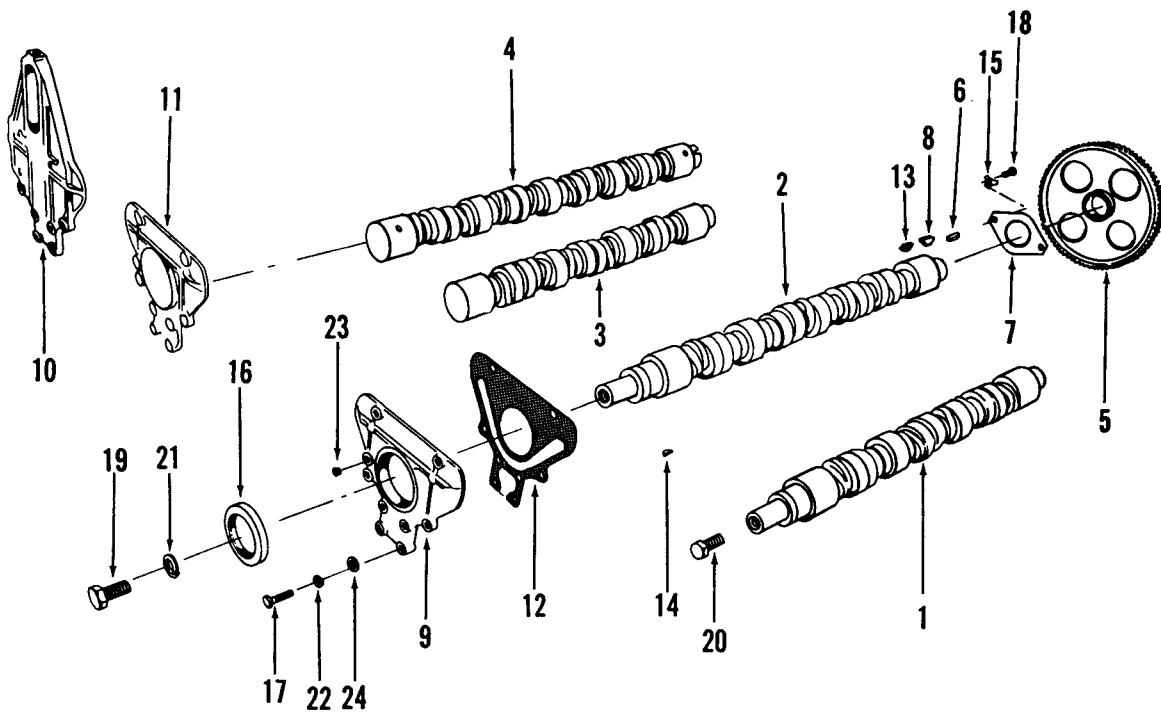
CRANKSHAFT AND MAIN BEARINGS
Figure 2

6207115



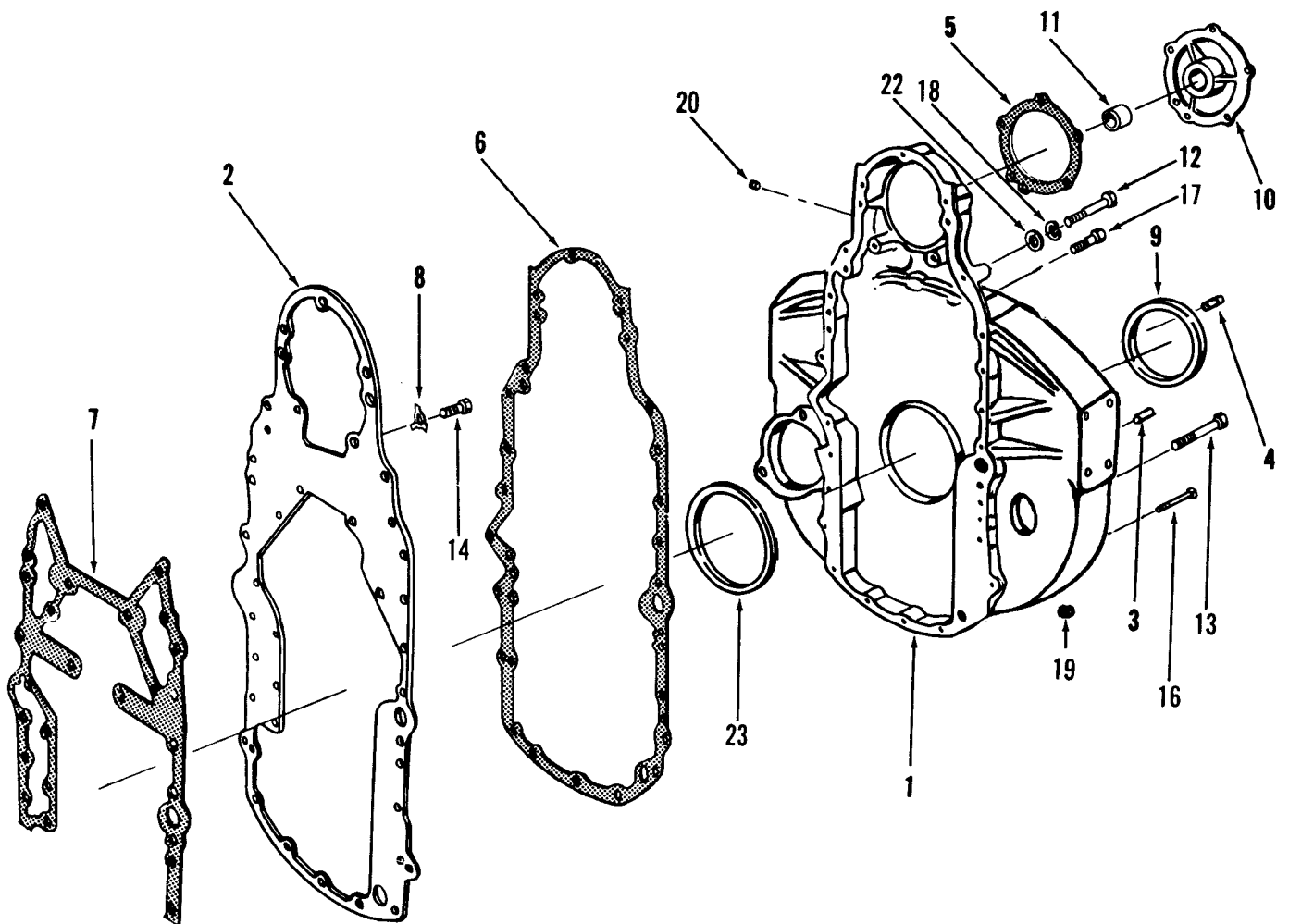
VIBRATION DAMPER
AND
CRANKSHAFT PULLEYS
Figure 3

6207161



CAMSHAFT AND CAMSHAFT COVER
Figure 6

6207167



FLYWHEEL AND GEAR HOUSING
Figure 7

CYLINDER BLOCK

01.01
Page 1
issued 1-63

Engine Model	No. Cyl.	Engine Application										Part Number	Part Name	No. Req.	Fig. No.	Ref. No.	Use	Remarks
		B	BI	CI	I	IP	P	M	G									
CYLINDER BLOCK																		
V6-200	6	X										BM-77404	Block, cylinder (159610)	1	1	1	Std.	
V8-265	8	X	X									BM-77405	Block, cylinder (159620)	1	1	2	Std.	
VT8-370	8								X			BM-77405	Block, cylinder (159620)	1	1	2	Std.	
CYLINDER LINER																		
V6-200	6	X										154950	Liner, cylinder	6	1	26	Std.	
V8-265	8	X										154950	Liner, cylinder	8	1	26	Std.	
VT8-370	8								X			158630	Liner, cylinder	8	1	26	Std.	
V6-200	6			X								158630	Liner, cylinder	6	1	26	Std.	
V8-265	8			X								158630	Liner, cylinder	8	1	26	Std.	

01.01.1

CYLINDER BLOCK

Part Number	Part Name	No. Req.	Fig. No.	Ref. No.	Part Number	Part Name	No. Req.	Fig. No.	Ref. No.
CYLINDER BLOCK									
		V6 V8							
	Group A								
BM-77404	Block, cylinder (159610)	1	1	1					
BM-77405	Block, cylinder (159620)	1	1	2					
148001	* Bolt, main bearing cap	8 10	1	3					
148210	* Bushing, camshaft (No. 2, 3, 4)	2 3	1	4					
147160	* Bushing, camshaft (No. 1, 5)	2 2	1	5					
151348	Capscrew, cylinder head	12 16	1	6					
151349	Capscrew, cylinder head	8 10	1	7					
151350	Capscrew, cylinder head	8 10	1	8					
S-136	* Capscrew, main bearing, side locking	8 10	1	9					
S-172-B	Capscrew, water header cover	4 4	1	10					
151249	Cover, water header	1 1	1	11					
100973	* Dowel, ring, cylinder head to block	4 4	1	12					
150073	* Dowel, gear housing to block (Master)	1 1	1	13					
150118	* Dowel, gear housing to block (Diamond)	1 1	1	14					
70645	* Dowel, front cover to block (Master)	1 1	1	15					
68568	* Dowel, front cover to block (Diamond)	1 1	1	16					
67211	* Dowel, rear main bearing cap	2 2	1	17					
70674	* Dyna-seal, main bearing capscrew side locking	8 10	1	18					
151781	Gasket, water header cover	1 1	1	19					
S-911-B	* Plug, pipe	6 6	1	20					
S-915-A	* Plug, pipe	2 2	1	21					
S-604	Lockwasher, water header cover	4 4	1	22					
140218	* Washer	8 10	1	23					
127316	* Washer, cylinder head capscrew	28 36	1	24					
S-602	Washer, water header	4 4	1	25					

* Interchangeable No. 1 and No. 2 design

PARTS INDENTED ARE INCLUDED IN THE PART UNDER WHICH THEY ARE INDENTED

MISCELLANEOUS AND MOUNTING PARTS

U1.01.3

Page 3

issued 1-63

Engine Model	Part Number	Part Name		No. Req.	Fig. No.	Ref. No.
CAPS, MAIN BEARINGS			V6	V8		
V6-200, V8-265, VT8-370	162231	Cap, main bearing (semi-finished) (Front)	1	1	1	29
	162230	Cap, main bearing (semi-finished) (No. 2, 3, 4)	2	3	1	29
	158885	Cap, main bearing (semi-finished) (Rear)	1	1	1	29
DOWELS						
V6-200, V8-265, VT8-370	150073	Dowel, gear housing to block (Master)	1	1	1	13
	151106	* Dowel, gear housing to block (.015" O/S) (Master)			1	13
	151107	* Dowel, gear housing to block (.030" O/S) (Master)			1	13
	151108	* Dowel, gear housing to block (.040" O/S) (Master)			1	13
	150118	* Dowel, gear housing to block (Diamond)	1	1	1	14
	151103	* Dowel, gear housing to block (.015" O/S) (Diamond)			1	14
	151104	* Dowel, gear housing to block (.030" O/S) (Diamond)			1	14
	151105	* Dowel, gear housing to block (.040" O/S) (Diamond)			1	14
PACKING, LINER						
V6-200, V8-265, VT8-370	122929	* Packing, cylinder liner	12	16	1	27
	155172	* Ring, liner sealing	6	8	1	28
SHIMS, LINER						
V6-200, V8-265, VT8-370	159098	* Shim, liner .007				
	159099	* Shim, liner .008				
	159100	* Shim, liner .009				
	159101	* Shim, liner .029				
	159102	* Shim, liner .031				
	159103	* Shim, liner .062				
* Interchangeable No. 1 and No. 2 design.						

CRANKSHAFT

01.02
Page 1
issued 1-63

Engine Model	No. Cyl.	Engine Application								Part Number	Part Name	No. Req.	Fig. No.	Ref. No.	Use	Remarks
		B	BI	CI	I	IP	P	M	G		CRANKSHAFT					
V6-200	6	X								BM-74516	Crankshaft (145840)	1	2	1	Std.	
V8-265	8	X								BM-74574	Crankshaft (145830)	1	2	4	Std.	
V6-200	6	X								BM-77834	Crankshaft (148350)	1	2	1	Opt.	Use for engines rated above standard speed and/or horsepower
VI8-370	8							X		BM-76585	Crankshaft (142690)	1	2	4	Std.	Opt. for engines rated above standard speed and/or horsepower
V6-200	6			X						BM-79573	Crankshaft (156920)	1	2	1	Std.	156920, 158370
V8-265	8			X						BM-79405	Crankshaft (158370)	1	2	4	Std.	may be used on automotive engines by changing front cover, crankshaft pulley, 158556 oil seal and 158760 or 158759 adapter

COMPONENT PARTS FOR ASSEMBLIES ARE SHOWN ON THE FOLLOWING PAGES.

CRANKSHAFT

Part Number	Part Name	No. Req.	Fig. No.	Ref. No.	Part Number	Part Name	No. Req.	Fig. No.	Ref. No.
	CRANKSHAFT	V6 V8							
	GROUP A								
BM-74516	Crankshaft (145840)	1	2						
BM-77834	Crankshaft (148350)	1	2						
145840	Crankshaft	1	2	1					
148350	Crankshaft	1	2	1					
150138	Gear, crankshaft	1	2	2					
144131	Key, gear	1	2	3					
	GROUP B								
BM-74574	Crankshaft (145830)	1	2						
BM-76585	Crankshaft (142690)	1	2						
145830	Crankshaft	1	2	4					
142690	Crankshaft	1	2	4					
150138	Gear, crankshaft	1	2	2					
144131	Key, gear	1	2	3					
	GROUP C								
BM-79573	Crankshaft (156920)	1	2						
BM-79405	Crankshaft (158370)	1	2						
156920	Crankshaft	1	2	1					
158370	Crankshaft	1	2	4					
150138	Gear, crankshaft	1	2	2					
144131	Key, gear	1	2	3					

All parts interchangeable.

PARTS INDENTED ARE INCLUDED IN THE PART UNDER WHICH THEY ARE INDENTED

MAIN BEARINGS

01.02.1
Page 3
issued 1-63

Engine Model	No. Cyl.	Engine Application										Part Number	Part Name	No. Req.	Fig. No.	Ref. No.	Use	Remarks
		B	BI	CI	I	IP	P	M	G									
						</												

COMPONENT PARTS FOR ASSEMBLIES ARE SHOWN ON THE FOLLOWING PAGES.

MAIN BEARING TABULATION

<u>Standard</u>	<u>.010"</u> <u>Undersize</u>	<u>.020"</u> <u>Undersize</u>	<u>.030"</u> <u>Undersize</u>	<u>.040"</u> <u>Undersize</u>	<u>Qty.</u>	<u>Fig.</u> <u>No.</u>	<u>Ref.</u> <u>No.</u>	<u>Remarks</u>
Model: V6-200								
BM-71620	BM-71621	BM-71622	BM-71623	BM-71624	1	2		Standard
146590	146591	146592	146593	146594	1	2	5	No. 1 upper
140080	140081	140082	140083	140084	1	2	6	No. 1 lower
146600	146601	146602	146603	146604	2	2	7	No. 2, 3 upper
140090	140091	140092	140093	140094	2	2	8	No. 2, 3 lower
146610	146611	146612	146613	146614	1	2	9	No. 4 upper
140100	140101	140102	140103	140104	1	2	10	No. 4 lower
150100	150100	150100	150100	150100	4	2	11	Thrust ring
150101	150101	150101	150101	150101	4	2	11	.010 oversize
150102	150102	150102	150102	150102	4	2	11	.020 oversize
Model: V8-265 VT8-370								
BM-71630	BM-71631	BM-71632	BM-71633	BM-71634	1	2		Standard
146590	146591	146592	146593	146594	1	2	5	No. 1 upper
140080	140081	140082	140083	140084	1	2	6	No. 1 lower
146600	146601	146602	146603	146604	3	2	7	No. 2, 3, 4, upper
140090	140091	140092	140093	140094	3	2	8	No. 2, 3, 4, lower
146610	146611	146612	146613	146614	1	2	9	No. 5 upper
140100	140101	140102	140103	140104	1	2	10	No. 5 lower
150100	150100	150100	150100	150100	4	2	11	Thrust ring
150101	150101	150101	150101	150101	4	2	11	.010 oversize
150102	150102	150102	150102	150102	4	2	11	.020 oversize

VIBRATION DAMPER

01.02.2
Page 5
issued 1-63

Engine Model	No. Cyl.	Engine Application								Part Number	Part Name	No. Req.	Fig. No.	Ref. No.	Use	Remarks
		B	BI	CI	I	IP	P	M	G							

COMPONENT PARTS FOR ASSEMBLIES ARE SHOWN ON THE FOLLOWING PAGES.

CRANKSHAFT PULLEYS

NOTE: Pulleys mounted to vibration damper require
(6) 7/16-20 UNF, 1 1/4" Capscrew

Engine Model	Part No.	Fig. No.	Illus. Ref. No.	No. of Grooves	Has Std. Single Groove	Has Std. 2 Grooves	Remarks
V6	145825	3	13	1	Yes	---	Std. for camshaft mounted fan.
V6	145828	3	14	2	---	Yes	Std. for high mounted fan.
V6	159256	3	15	1	Yes	---	Same as 145825 except has pilot and mounting holes for power take off.
V6	152394	3	16	3	No	No	One groove spaced forward to drive water pump and electrical equipment and two grooves for remote fan, all grooves 8" O.D.
V6	154315	3	17	3	Yes	No	Same as 145825 except two extra 6" O.D. grooves.
V6	154518	3	18	4	No	Yes	Same as 145828 except two extra 7 1/4" O.D. grooves.
V6	157407	3	19	1	No	No	Same as 152394 except less special fan grooves.
V6	New	3		3			Same as 159260 except counter-balanced.
V8	156289	3	20	1	Yes	---	Std. for camshaft mounted fan.
V8	156288	3	21	2	---	Yes	Std. for high mounted fan.
V8	159257	3	22	3	No	No	Same as 152394 except not counter balanced. 1/4" one groove, two, 6" O.D. grooves.
V8	159260	3		3	No	No	Two 7 1/4" O.D. grooves and one 8" O.D. groove.
V8	159261	3	24	3	No	No	
V8	159262	3	25	3	Yes	No	Same as 154315 except not counter balanced.
V8	New	3		3	No	No	Same as 154518 except not counter balanced.
V8	159258	3	26	1	No	No	7/8" belt groove, 6.5" O.D. pilots to BM-79340 (158504) damper.
V8	159259	3	27	1	No	No	1 1/4" belt groove, 8.2" O.D. pilots in BM-79340 (158504) damper.
V8	153959	3	28	1	No	No	3/4" belt groove, 5 1/2" O.D. bolts to fan hub in place of fan for remote drive.
V8	159113	3		1	No	No	Use with remote mounted fan.
V6	158471	3					Use with remote mounted fan.

CRANKSHAFT PULLEYS (CONT'D)

NOTE: Pulleys mounted to vibration damper require
(6) 7/16-20 UNF, 1 1/4" Capscrew

<u>Engine Model</u>	<u>Part No.</u>	<u>Fig. No.</u>	<u>Illus. Ref. No.</u>	<u>No. of Grooves</u>	<u>Has Std. Single Groove</u>	<u>Has Std. 2 Grooves</u>	<u>Remarks</u>
V6	158818	3	29	4	No	Yes	Has 3/4" belt groove.
V6	160116						Use with 156920 crankshaft.
V6	155994	3	30	3	No	Yes	Std. CI. Has 3/4" belt grooves.
V8	155993			3			Std. CI. Has 3/4" belt grooves.
VT8-370	159738			2	No	Yes	Std. M. Has 3/4" belt groove

VIBRATION DAMPER ADAPTER

Engine Model	Part Number	Part Name	No. Req.	Fig. No.	Ref. No.
V8-265		ADAPTER, VIBRATION DAMPER			
	159255	Adapter, vibration damper (use with Stearns Electric Clutch)			
	159065	Adapter, vibration damper (use with Morflex No. 2 Coupling)			
01.02.5 V8-265		SPACER, VIBRATION DAMPER			
	160968	Spacer, vibration damper (use with BM- (158519) fan hub)			

MISCELLANEOUS AND MOUNTING PARTS

01.02.6
Page 9
Issued 1-63

Engine Model	Part Number	Part Name		No. Req.	Fig. No.	Ref. No.
ADAPTERS			V6	V8		
V6-200, V8-265	143667	Adapter, flywheel to crankshaft	1	1	2	12
V6-200	158760	Adapter, flywheel to crankshaft (CI)	1			
V8-265	158759	Adapter, flywheel to crankshaft (CI)		1		
DOWELS						
V6-200, V8-265	69519	Dowel, pulley	1	1	3	2
	128765	Dowel, main bearing thrust ring	2	2	2	15
	128766	Dowel, main bearing thrust ring	2	2	2	16
	60408-G	Dowel, adapter to crankshaft	2	2		
LOCKPLATE						
V8-265	68908	Lockplate, damper (use with dampers having 3/8-16 UNC-2A holes)			3	3
SLINGER, OIL						
V6-200, V8-265, VT8-370-M	154167	Slinger, oil	1	1	2	14
HARDWARE						
V6-200, V8-265	158391	Capscrew 3/8-16, UNC-2A, 1"			3	4
	158392	Capscrew 1/2-20, UNF-2A, 1 3/4"			3	5
	S-105-A	Capscrew 7/16-20, UNF-2A, 1 1/4"			3	6
	S-172-A	Capscrew 1/2-20, UNF-2A, 1 3/4"			3	7
	137953	Capscrew 1/2-20, UNF-2A, 1 3/4"			3	9
	158394	Capscrew 1/2-20, UNF-2A, 3/4" (Cadmium plated)			3	10
	118977	Capscrew 3/8-16, UNC-2A, 1 3/4"			3	11
	158393	Capscrew 3/8-16, UNC-2A, 1 3/4" (Cadmium plated)			3	12
	140566	Capscrew, adapter to crankshaft	7	7	2	13
	140567	Capscrew, flywheel to adapter	8	8		
	158603	Capscrew (CI)	6			
	160910	Capscrew 7/16-20, UNF-2A, 1 1/2" (3/32" hole drilled through head)				
	161997	Capscrew, body fit (to adapt vibration damper with 7/16" mounting holes to crankshaft pulleys with 3/8" dia. mounting threads.)				

CONNECTING ROD AND BUSHING ASSEMBLY

01.04
Page 1
issued 1-63

Engine Model	No. Cyl.	Engine Application								Part Number	Part Name	No. Req.	Fig. No.	Ref. No.	Use	Remarks
		B	BI	CI	I	IP	P	M	G							
CONNECTING ROD																
V6-200	6	X								BM-71249	Rod, connecting (147036)	6	4	1	Std.	
V8-265	8	X								BM-71249	Rod, connecting (147036)	8	4	1	Std.	
V6-200	6			X						BM-79166	Rod, connecting (156101)	6	4	1	Std.	
V8-265	8			X						BM-79166	Rod, connecting (156101)	8	4	1	Std.	
VT8-370	8								X	BM-78000	Rod, connecting (142970)	8	4	1	Std.	
All parts interchangeable No. 1 and No. 2 design.																

COMPONENT PARTS FOR ASSEMBLIES ARE SHOWN ON THE FOLLOWING PAGES.

CONNECTING ROD AND BUSHING ASSEMBLY

Part Number	Part Name	No. Req.	Fig. No.	Ref. No.	Part Number	Part Name	No. Req.	Fig. No.	Ref. No.
	CONNECTING RODS	V6 V8							
	GROUP A								
BM-71249	Rod, connecting (147036)	6 8	4	1					
139437	Bolt, connecting rod	12 16	4	2					
126600	Bushing, piston pin	12 16	4	3					
139438	Nut, connecting rod bolt	12 16	4	4					
139950	Lockplate, connecting rod nut	12 16	4	5					
	GROUP B								
	Same as Group A except:								
BM-78000	Rod, connecting (142970)	8	4	1					
	GROUP C - (CI)								
BM-79166	Rod, connecting (156101)	6 8	4	1					
156304	Bolt, connecting rod	12 16	4	2					
126600	Bushing, piston pin	12 16	4	3					
139438	Nut, connecting rod	12 16	4	4					
139950	Lockplate, connecting rod nut	12 16	4	5					

All parts interchangeable No. 1 and No. 2 design.

PARTS INDENTED ARE INCLUDED IN THE PART UNDER WHICH THEY ARE INDENTED

BEARING, CONNECTING ROD

01.04.1
Page 3
issued 1-63

Engine Model	Part Number	Part Name		No. Req.	Fig. No.	Ref. No.
		BEARING, CONNECTING ROD	V6	V8		
V6-200, V8-265	146470 *	Bearing, connecting rod (std.)	12	16	4	6
	146471 *	Bearing, connecting rod (.010)			4	6
	146472 *	Bearing, connecting rod (.020)			4	6
	146473 *	Bearing, connecting rod (.030)			4	6
	146474 *	Bearing, connecting rod (.040)			4	6
	156310	Bearing, connecting rod (std.) CI	12	16	4	6
	156311	Bearing, connecting rod (.010)			4	
	156312	Bearing, connecting rod (.020)			4	A.
	156313	Bearing, connecting rod (.030)			4	
	156314	Bearing, connecting rod (.040)			4	R.
VT8-370-M	158720	Bearing, connecting rod (std.)		16	4	6
	158721	Bearing, connecting rod (.010)			4	
	158722	Bearing, connecting rod (.020)			4	A.
	158723	Bearing, connecting rod (.030)			4	
	158724	Bearing, connecting rod (.040)			4	R.

* Interchangeable No. 1 and No. 2 design.

PISTON ASSEMBLY

01.05
Page 1
issued 1-63

Engine Model	No. Cyl.	Engine Application								Part Number	Part Name	No. Req.	Fig. No.	Ref. No.	Use	Remarks
		B	BI	CI	I	IP	P	M	G							
											PISTON					
V6-200	6	X								BM-71660	Piston assembly (146750)	6	4	7	Std.	Std. smooth skirt, aluminum, taper piston pin boss, 3-ring.
V8-265	8	X								BM-71660	Piston assembly	8	4	7	Std.	Std.
V6-200	6			X						BM-79200	Piston assembly (156220)	6	4	7	Std.	Smooth skirt, aluminum, cast iron insert, taper piston boss, 3-ring.
V8-265	8			X						BM-79200	Piston assembly (156220)	8	4	7	Std.	
V6-200, V8-265	6,8	X								BM-71662	Piston assembly	6,8	4	7	Opt.	(.020)
V6-200, V8-265	6,8	X								BM-71663	Piston assembly	6,8	4	7	Opt.	(.030)
V6-200, V8-265	6,8	X								BM-71664	Piston assembly	6,8	4	7	Opt.	(.040)
V6-200, V8-265	6,8			X						BM-79202	Piston assembly (156222)	6,8	8	7	Opt.	(.020)
V6-200, V8-265	6,8			X						BM-79203	Piston assembly	6,8	4	7	Opt.	(.030)
V6-200, V8-265	6,8			X						BM-79204	Piston assembly (156224)	6,8	4	7	Opt.	(.040)
VT8-370	8								X	BM-79320	Piston assembly (155420)	8	4	7	Std.	Smooth skirt, aluminum, Ni-resist insert, taper piston pin boss
VT8-370	8								X	BM-79322	Piston assembly (155422)	8	4	7	Opt.	(.020)
VT8-370	8								X	BM-79323	Piston assembly (155423)	8	4	7	Opt.	(.030)
VT8-370	8								X	BM-79324	Piston assembly (155424)	8	4	7	Opt.	(.040)

All parts interchangeable No. 1 and No. 2 design.

COMPONENT PARTS FOR ASSEMBLIES ARE SHOWN ON THE FOLLOWING PAGES.

PISTON ASSEMBLY

PISTON TABULATION

Engine Model	Standard	.020 Oversize	.030 Oversize	.040 Oversize	Part Name	Qty.	Fig. No.	Ref. No.	Remarks
V6-200,	BM-71660	BM-71662	BM-71663	BM-71664	Piston	6, 8			
V8-265	146750	146752	146753	146754	Piston	6, 8	4	7	
	140120	140120	140120	140120	Pin	6, 8	4	8	
	140317	140317	140317	140317	Ring, snap	12,16	4	9	
V6-200,	BM-79200	BM-79202	BM-79203	BM-79204	Piston	6, 8			
V8-265	156200	156202	156203	156204	Piston	6, 8	4	7	
VT8-370-M	140120	140120	140120	140120	Pin	6, 8	4	8	
	140317	140317	140317	140317	Ring, snap	12,16	4	9	
VT8-370	BM-79320	BM-79322	BM-79323	BM-79324	Piston				
	155420	155422	155423	155424	Piston	8	4	7	
	140120	140120	140120	140120	Pin	8	4	8	
	140317	140317	140317	140317	Ring, snap	16	4	9	

MISCELLANEOUS AND MOUNTING PARTS

U1.05.1
Page 3
issued 1-63

Engine Model	Part Number	Part Name		No. Req.	Fig. No.	Ref. No.
V6-200, V8-265, VT8-370	140120	Pin, piston	PISTON PIN			
			V6	V8		
			6	8	4	8
V6-200, V8-265, VT8-370	140317	Ring, piston pin snap	SNAP RING			
			V6	V8		
			12	16	4	9

PISTON RINGS

Engine Model	No. Cyl.	Engine Application								Part Number	Part Name	No. Req.	Fig. No.	Ref. No.	Use	Remarks
		B	BI	CI	I	IP	P	M	G							
											PISTON RING					
V6-200	6	X		X						BM-71640	Ring set, piston	1	4		Std	
I8-265	8	X		X						BM-71650	Ring set, piston	1	4		Std	
IT8-370	8							X		BM-71650	Ring set, piston	1	4		Std	
I6-200	6	X		X						BM-71642	Ring set, piston	1	4		Opt.	(.020)
I8-265	8	X		X						BM-71652	Ring set, piston	1	4		Opt.	(.020)
IT8-370	8							X		BM-71652	Ring set, piston	1	4		Opt.	(.020)
V6-200	6	X		X						BM-71643	Ring set, piston	1	4		Opt.	(.030)
I8-265	8	X		X						BM-71653	Ring set, piston	1	4		Opt.	(.030)
VT8-370	8							X		BM-71654	Ring set, piston	1	4		Opt.	(.040)
V6-200	6	X		X						BM-71644	Ring set, piston	1	4		Opt.	(.040)
V8-265	8	X		X						BM-71654	Ring set, piston	1	4		Opt.	(.040)
VT8-370	8							X		BM-71654	Ring set, piston	1	4		Opt.	(.040)

All parts interchangeable No. 1 and No. 2 design

PISTON RINGS

PISTON RING TABULATION

Engine Model	Standard	.020 Oversize	.030 Oversize	.040 Oversize	Part Name	Qty.	Fig. No.	Ref. No.	Remarks
V6-200	BM-71640	BM-71642	BM-71643	BM-71644		1	4		
	147670	147672	147673	147674	Compression	6	4	10	
	154020	154022	154023	154024	Compression	6	4	11	
	122560	122562	122563	122564	Oil	6	4	12	
V8-265, VT8-370	BM-71650	BM-71652	BM-71653	BM-71654		1	4		
	147670	147672	147673	147674	Compression	8	4	10	
	154020	154022	154023	154024	Compression	8	4	11	
	122560	122562	122563	122564	Oil	8	4	12	

REAR AND FRONT COVERS

01.06
Page 1
Issued 1-63

Engine Model	No. Cyl.	Engine Application								Part Number	Part Name	No. Req.	Fig. No.	Ref. No.	Use	Remarks
		B	BI	CI	I	IP	P	M	G		FRONT COVER					
V6-200	6	X								154371	Cover, front	1	5	1	Std.	30° angle, wedge type.
V8-265	8	X								154371	Cover, front	1	5	1	Std.	
V8-265	8			X						151878	Cover, front	1	5		Std.	
VT8-370	8							X		139680	Cover, front	1	5	3	Std.	Two bolt vertical pads each side.
V6-200, V8-265	6,8	X								156214	Cover, front	1	5	2	Opt.	35° angle, wedge type.
		X								158347	Cover, front	1	5		Opt.	30° angle, special mounting
		X								153575	Cover, front	1	5	3	Opt.	hole location.
										156614	Cover, front	1	5	3	Opt.	Same as 153575 except location of mounting holes.
										154570	Cover, front	1	5	4	Opt.	Single horizontal pad, center.
										158754	Cover, front	1	5	1	Opt.	Same as 154371 with addition of 1" diameter x 3/16" deep counter-bore to mounting holes on bottom of mounting pad.
V6-200	6									160119	Cover, front	1			Opt.	

COMPONENT PARTS FOR ASSEMBLIES ARE SHOWN ON THE FOLLOWING PAGES.

MISCELLANEOUS AND MOUNTING PARTS

Engine Model	Part Number	Part Name		No. Req.	Fig. No.	Ref. No.
DOWELS						
V6-200, V8-265, VT8-370	70645	Dowel, front cover (Master)		1	1	5
	68568	Dowel, front cover (Diamond)		1	1	5
						6
GASKET						
V6-200, V8-265, VT8-370	141617	Gasket, front cover		1	1	5
						7
V6-200, V8-265	158551	Gasket, front cover (CI)		1	1	
SEAL,OIL						
V6-200, V8-265, VT8-370	142598	Seal, oil		1	1	5
						8
V6-200, V8-265	158556	Seal, oil (CI)		1	1	
HARDWARE						
V6-200, V8-265, VT8-370	S-103-D	Capscrew 3/8-16 UNC-2A, 1 1/4"		5		9
	S-109	Capscrew 3/8-16 UNC-2A, 7/8"		5		10
	108707	Capscrew 3/8-16 UNC-2A, 1 1/2"		5		11
	S-604	Lockwasher 3/8"		5		12

CAMSHAFT

01.07
Page 1
Issued 1-63

Engine Model	No. Cyl.	Engine Application								Part Number	Part Name	No. Req.	Fig. No.	Ref. No.	Use	Remarks
		B	BI	CI	I	IP	P	M	G		CAMSHAFT					
V6-200	6	X								BM-74518	Camshaft (155340)	1	6	1	Std.	Low mount fan.
V8-265	8	X								BM-75095	Camshaft (152920)	1	6	2	Std.	Low mount fan.
V6-200	6			X						BM-75093	Camshaft (155510)	1	6	3	Std.	High mount fan.
V6-200	6	X								BM-77868	Camshaft (155510)	1	6	3	Opt.	Same as BM-75093 except has 139070 Key for advanced injector timing.
V8-265	8			X						BM-74576	Camshaft (155500)	1	6	4	Std.	High mount fan.
VT8-370	8			X						BM-74576	Camshaft (155500)	1	6	4	Std.	
V6-200, V8-265	6,8									BM-78875	Camshaft (155500)	1	6	4	Std.	Same as BM-74576 except has S-302 Key.
All camshaft parts interchangeable No. 1 and No. 2 design.																

COMPONENT PARTS FOR ASSEMBLIES ARE SHOWN ON THE FOLLOWING PAGES.

CAMSHAFT

Part Number	Part Name	No. Req.	Fig. No.	Ref. No.	Part Number	Part Name	No. Req.	Fig. No.	Ref. No.
	CAMSHAFT	V6 V8							
	GROUP A								
BM-74518	Camshaft (155340)	1	6						
BM-75093	Camshaft (155510)	1	6						
155340	Camshaft	1	6	1					
155510	Camshaft	1	6	3					
150129	Gear, camshaft	1	6	5					
156397	Key, gear	1	6	6					
139875	Bearing, camshaft thrust	1	6	7					
	GROUP B								
	Same as Group A except:								
BM-77868	Camshaft (155510)	1	6	3					
139070	Key, gear	1	6	8					
	GROUP C								
	Same as Group A except:								
BM-75095	Camshaft (152920)	1	6						
BM-74576	Camshaft (155500)	1	6						
152920	Camshaft	1	6	2					
155500	Camshaft	1	6	4					
	GROUP D								
	Same as Group A except:								
BM-78875	Camshaft (155500)	1	6						
155500	Camshaft	1	6	2					
S-302	Key	1	6						

PARTS INDENTED ARE INCLUDED IN THE PART UNDER WHICH THEY ARE INDENTED

CAMSHAFT GEAR

01.07.1
Page 3
issued 1-63

Engine Model	Part Number	Part Name		No. Req.	Fig. No.	Ref. No.
V6-200, V8-265, VT8-370	150129	CAMSHAFT GEAR Gear, camshaft	V6	V8		
			1	1	6	5

MISCELLANEOUS AND MOUNTING PARTS

Engine Model	Part Number	Part Name	No. Req.	Fig. No.	Ref. No.
BUSHING			V6	V8	
V6-200, V8-265	148210	Bushing, camshaft (No. 2, 3, 4)	2	3	
	147160	Bushing, camshaft (No. 1, 5)	2	2	
V6-200, V8-265	151347	Cover, camshaft (low mount fan)	1	1	6 9
	151346	Cover, camshaft (high mount fan)	1	1	6 10
	154933	Cover, camshaft front (high mount fan)	1	1	6 11
	151878	Cover, camshaft front (high mount fan) (CI)	1	1	
GASKET					
V6-200, V8-265	151866	Gasket, camshaft cover	1	1	6 12
KEY					
VT8-370 V6-200, V8-265	S-302	Key, gear (straight)	1	1	6 6
	156397	Key, gear (advanced injector timing 1/2° with respect to camshaft. .006/.008 offset. Use in engines rated 2600 R.P.M. and under.)	1	1	6 13
	S-316	Key, fan drive pulley	1	1	6 14
V6-200, V8-265	139114	Key, gear (.014/.016 offset. Use in engines rated over 2600 R.P.M.)	1	1	
LOCKPLATE					
V6-200, V8-265, VT8-370	68908	Lockplate, thrust plate	2	2	6 15
SEAL, OIL					
V6-200, V8-265, VT8-370	140688	Seal, camshaft cover oil	1	1	6 16
HARDWARE					
V6-200, V8-265 VT8-370	S-103-D	Capscrew 3/8-16 UNC-2A 1 1/4"		6	17
	S-109	Capscrew 3/8-16 UNC-2A 7/8"		6	18
	S-186-A	Capscrew 5/8-18 UNF-2A 1 1/4"		6	19
	138042	Capscrew 5/8-18 UNF-2A 1 1/2"		6	20
	S-603	Lockwasher 5/8"		6	21
	S-604	Lockwasher 3/8"		6	22
	S-911-B	Plug, pipe 1/8"		6	23
	S-602	Washer, plain 13/32"		6	24

GEAR COVER, PLATE AND HOUSING

Page 1
issued 1-63

Engine Model	No. Cyl.	Engine Application								Part Number	Part Name	No. Req.	Fig. No.	Ref. No.	Use	Remarks
		B	BI	CI	I	IP	P	M	G							
GEAR HOUSING																
V6-200	6	X								157237	Housing, gear and fly-wheel	1	7	1	Std.	Combination housing.
V8-265	8	X								157237	Housing, gear and fly-wheel	1	7	1	Std.	
NOTE: Optional combination gear and flywheel housings are listed in Group 16.01.																
GEAR PLATE																
V6-200	6									151035 *	Plate, gear housing	1	7	2	Std.	
V8-265	8									151035 *	Plate, gear housing	1	7	2	Std.	
* Interchangeable No. 1 and No. 2 design.																

COMPONENT PARTS FOR ASSEMBLIES ARE SHOWN ON THE FOLLOWING PAGES.

MISCELLANEOUS AND MOUNTING PARTS

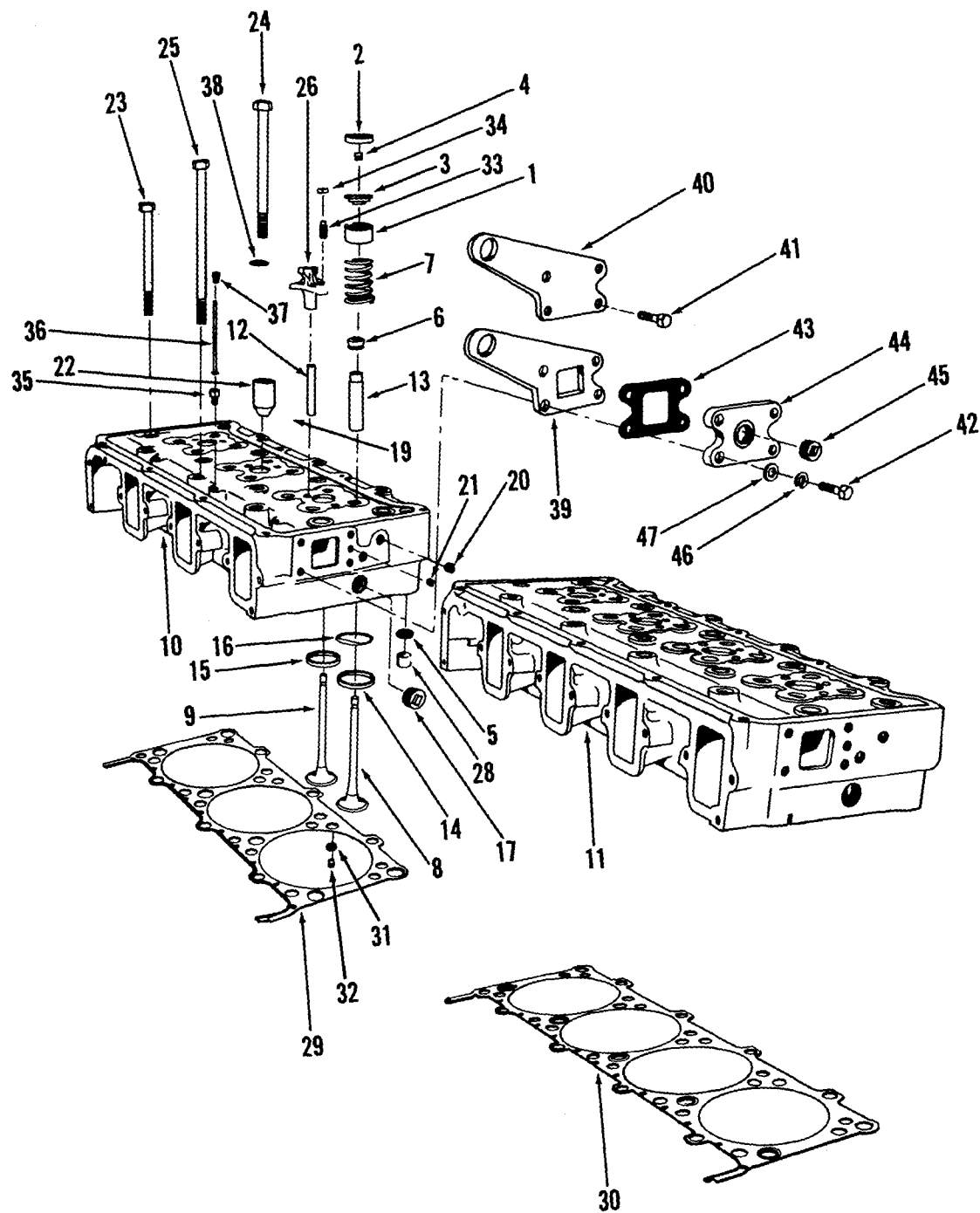
Engine Model	Part Number	Part Name		No. Req.	Fig. No.	Ref. No.
		DOWELS	V6	V8		
V6-200, V8-265, VT8-370	70662	Dowel, gear housing to flywheel housing (Master)	1	1	7	3
	150119	Dowel, gear housing to flywheel housing (Diamond)	1	1	7	4
	151109	Dowel, gear housing to flywheel housing (.015" O/S) (Diamond)			7	4
	151110	Dowel, gear housing to flywheel housing (.030" O/S) (Diamond)			7	4
	151111	Dowel, gear housing to flywheel housing (.040" O/S) (Diamond)			7	4
		GASKET				
V6-200, V8-265, VT8-370	139846	Gasket, compressor or fuel pump drive rear support	1	1	7	5
	151100	Gasket, gear housing to plate	1	1	7	6
	151780	Gasket, plate to block	1	1	7	7
		LOCKPLATE				
V6-200, V8-265, VT8-370	68908	Lockplate, plate to block	10	10	7	8
	70879	Lockplate, plate to block		9		
		SEAL, OIL				
V6-200, V8-265, VT8-370	142599	Seal, oil (Std.)	1	1	7	9
	146909	Seal, oil (use with extended shaft) (2 3/8" O.D.)	1	1	7	
	140896	Seal, oil (use with extended shaft) (2 1/2" O.D.)	1	1		
		SHIELD, GEAR HOUSING				
VT8-370	154166	Shield, gear housing		1		23
		SUPPORT				
V6-200, V8-265, VT8-370	BM-78027	Support, compressor and/or fuel pump drive (154911)		1		
	BM-71356	Support, air compressor (139915)	1	1	7	10
	BM-74038	Support, air compressor and/or fuel pump drive (147440) (use with extended shaft) (Std. VT8-370)	1	1		
	144800	Bushing, support	1	1	7	11
		HARDWARE				
V6-200, V8-265, VT8-370	S-102-D	Capscrew 3/8-16, UNC-2A 3"			7	12
	S-105	Capscrew 3/8-16, UNC-2A 3 1/2"			7	13
	S-109	Capscrew 3/8-16, UNC-2A 7/8"			7	14
	S-163	Capscrew 3/8-16, UNC-2A 3 1/4"			7	15
	S-199-B	Capscrew 3/8-16, UNC-2A 3 3/4"			7	16
	108707	Capscrew 3/8-16, UNC-2A 1 1/2"			7	17
	S-604	Lockwasher 3/8"			7	18
	S-910-B	Plug, pipe 1/4"			7	19
	S-911-B	Plug, pipe 1/8"			7	20
	S-995	Plug, pipe 3/4"			7	21
	S-602	Washer, plain 13/32"			7	22

All parts interchangeable No. 1 and No. 2 design.

Group 02

***cylinder
head***

you own the best . . . repair with the best!
genuine **CUMMINS** parts



CYLINDER HEAD
Figure 1

6209097

CYLINDER HEAD

02.01
Page 1
issued 1-63

Engine Model	No. Cyl.	Engine Application								Part Number	Part Name	No. Req.	Fig. No.	Ref. No.	Use	Remarks
		B	BI	CI	I	IP	P	M	G							
CYLINDER HEAD																
V6-200	6	X		X						BM-76408	Head assembly, cylinder (149930)	2	1	10	Std.	
V8-265	8	X		X						BM-76119	Head assembly, cylinder (149920)	2	1	11	Std.	
VT8-370	8							X		BM-76119	Head assembly, cylinder (149920)	2	1	11	Std.	
GASKET																
V6-200	6	X		X						BM-76406	Gasket, cylinder head (150717)	2	1	29	Std.	
V8-265	8	X		X						BM-76117	Gasket, cylinder head (149973)	2	1	30	Std.	
VT8-370	8							X		BM-76117	Gasket, cylinder head (149973)	2	1	30	Std.	

02.01.1

COMPONENT PARTS FOR ASSEMBLIES ARE SHOWN ON THE FOLLOWING PAGES.

CYLINDER HEAD

Part Number	Part Name	No. Req.	Fig. No.	Ref. No.	Part Number	Part Name	No. Req.	Fig. No.	Ref. No.
	CYLINDER HEAD	V6 V8							
	Group A								
BM-76408	Head assembly, cylinder (149930)	2							
BM-76119	Head assembly, cylinder (149920)	2							
157572	Cover, intake valve spring	12 16	1	1					
157613	Cover, intake valve spring guide	12 16	1	2					
139896 *	Guide, valve spring	24 32	1	3					
127554 *	Half-collet, valve	48 64	1	4					
43696-A *	"O" ring	4 4	1	5					
135612 *	Seal, intake valve	12 16	1	6					
128235 *	Spring, valve	24 32	1	7					
138887 *	Valve, exhaust	12 16	1	8					
138886 *	Valve, intake	12 16	1	9					
BM-76407	Head assembly, cylinder (149930)	2	1	10					
BM-76118	Head assembly, cylinder (149920)	2	1	11					
123558 *	Guide, crosshead	12 16	1	12					
138937 *	Guide, valve	24 32	1	13					
127930 *	Insert, exhaust valve seat	12 16	1	14					
146120 *	Insert, intake valve seat	12 16	1	15					
146064 *	Plate, swirl	12 16	1	16					
S-995 *	Plug, pipe	6 6	1	17					
S-962 *	Plug, pipe	8 12	1						
S-911-B *	Plug, pipe	8 10	1	19					
S-910-B *	Plug, pipe	4 4	1	20					
70459 *	Plug, fuse	2 2	1	21					
147056 *	Sleeve, injector	6 8	1	22					

* Interchangeable No. 1 and No. 2 design

PARTS INDENTED ARE INCLUDED IN THE PART UNDER WHICH THEY ARE INDENTED

CYLINDER HEAD GASKET

02.01.1
Page 3
Issued 1-63

Part Number	Part Name	No. Req.	Fig. No.	Ref. No.	Part Number	Part Name	No. Req.	Fig. No.	Ref. No.
	GASKET, CYLINDER HEAD	V6 V8							
	GROUP A								
BM-76406	Gasket, cylinder head (150717)	2	1	29					
BM-76117	Gasket, cylinder head (149973)	2	1	30					
132705	Grommet, retainer	28 36	1	31					
131168	Retainer, grommet	28 36	1	32					

PARTS INDENTED ARE INCLUDED IN THE PART UNDER WHICH THEY ARE INDENTED

MISCELLANEOUS AND MOUNTING PARTS

Engine Model	Part Number	Part Name	No. Req.	Fig. No.	Ref. No.
CAPSCREW			V6	V8	
V6-200, V8-265, VT8-370	151348	Capscrew, cylinder head to block 5/8-18, UNF-2A 6.3"	12	16	1 23
	151349	Capscrew, cylinder head to block 5/8-18, UNF-2A 7.0"	8	10	1 24
	151350	* Capscrew, cylinder head to block 5/8-18, UNF-2A 10.2"	8	10	1 25
CROSSHEAD					
V6-200, V8-265, VT8-370	144896	* Crosshead, intake valve	6	8	1 26
	144897	* Crosshead, exhaust valve	6	8	1 26
DOWELS					
V6-200, V8-265, VT8-370	100973	* Dowel, ring, cylinder head to block	4	6	1 28
INSERTS					
V6-200, V8-265, VT8-370	127930	* Insert, exhaust valve seat	12	16	1 14
	127931	* Insert, exhaust valve seat (.010)			
	127932	* Insert, exhaust valve seat (.020)			
	127933	* Insert, exhaust valve seat (.030)			
	127934	* Insert, exhaust valve seat (.040)			
	146120	* Insert, intake valve seat	12	16	1 15
	146121	* Insert, intake valve seat (.010)			
	146122	* Insert, intake valve seat (.020)			
	146123	* Insert, intake valve seat (.030)			
	146124	* Insert, intake valve seat (.040)			
NUTS					
V6-200, V8-265, VT8-370	S-273	* Nut, crosshead adjusting 3/8"	12	16	1 34
PLUG					
V6-200, V8-265, VT8-370	161035	Plug, cylinder head fuel (to prevent air entrapment in fuel passage) 5/16"	2	2	
	161891	Plug, cylinder head fuel, 1/4"			
SCREW					
V6-200, V8-265, VT8-370	147389	* Screw, crosshead adjusting 3/8-24, NF	12	16	1 33
TUBE, VENT					
V6-200, V8-265, VT8-370	BM-76116	Tube, vent	2	2	1 36
	S-1027	Connector, tube	4	4	1 35
	S-1023-A	Nut, tube	4	4	1 37
* Interchangeable No. 1 and No. 2 design.					

MISCELLANEOUS AND MOUNTING PARTS

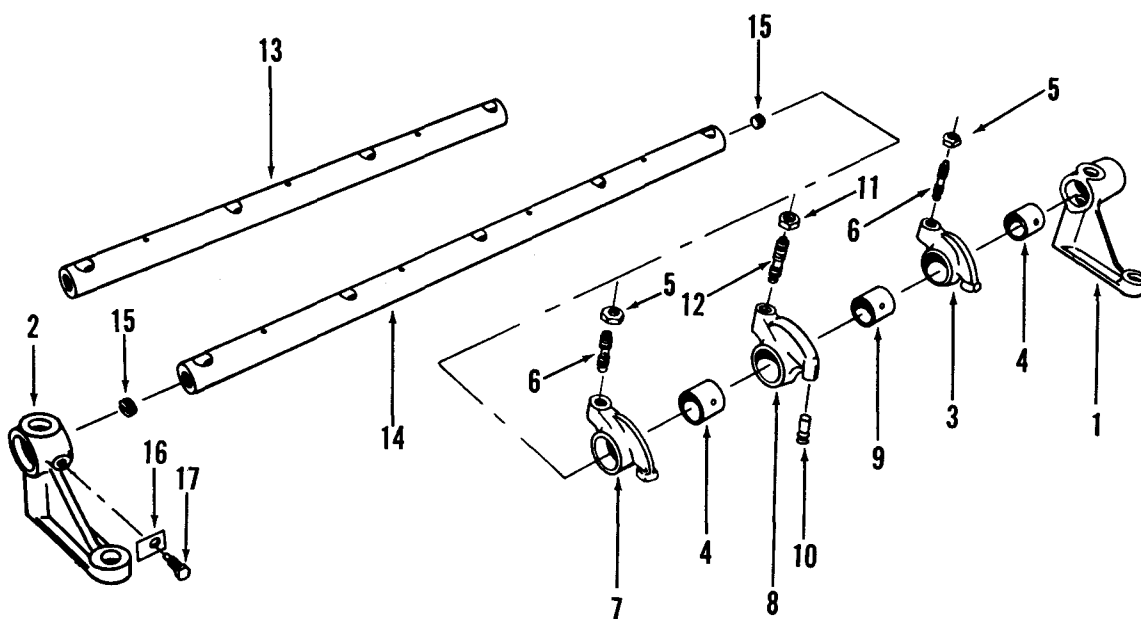
02.01.2
Page 5
issued 1-63

Engine Model	Part Number	Part Name		No. Req.	Fig. No.	Ref. No.
V6-200, V8-265, VT8-370	127316	WASHER Washer, cylinder head capscrew 5/8"	V6	V8		
			12	18		

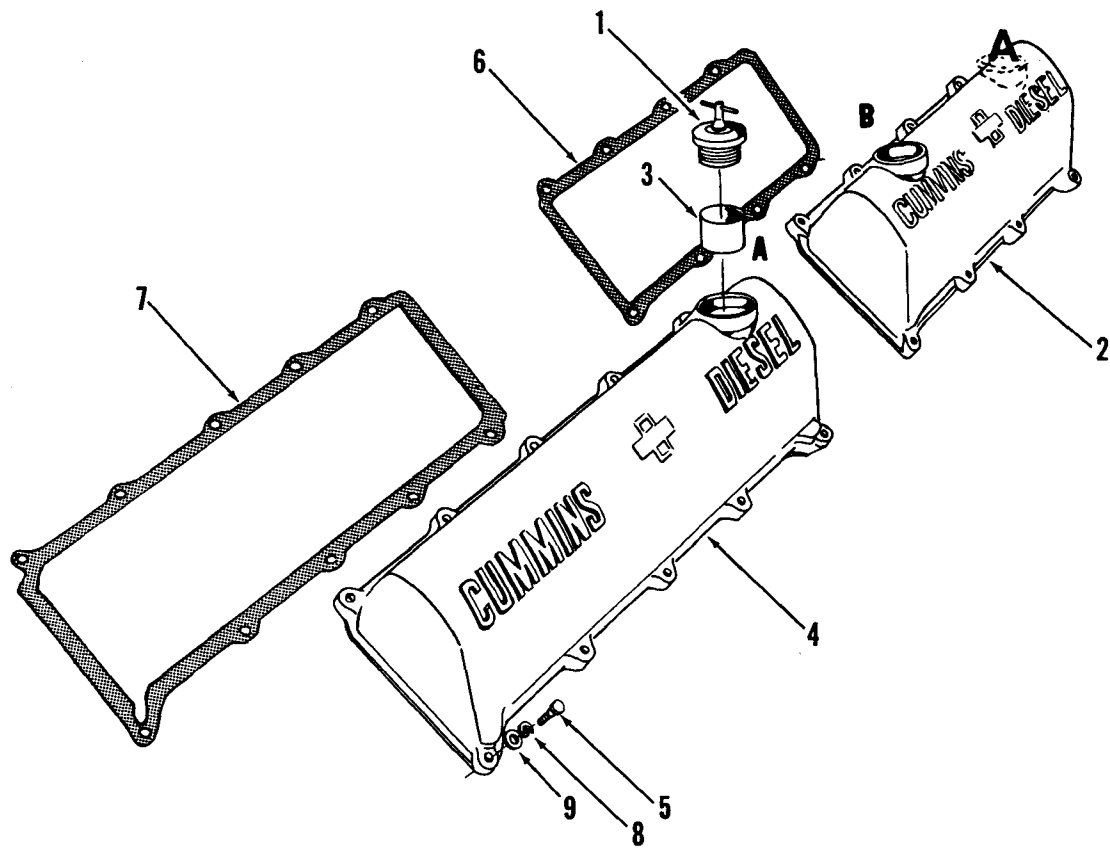
Group 03

rocker lever housing

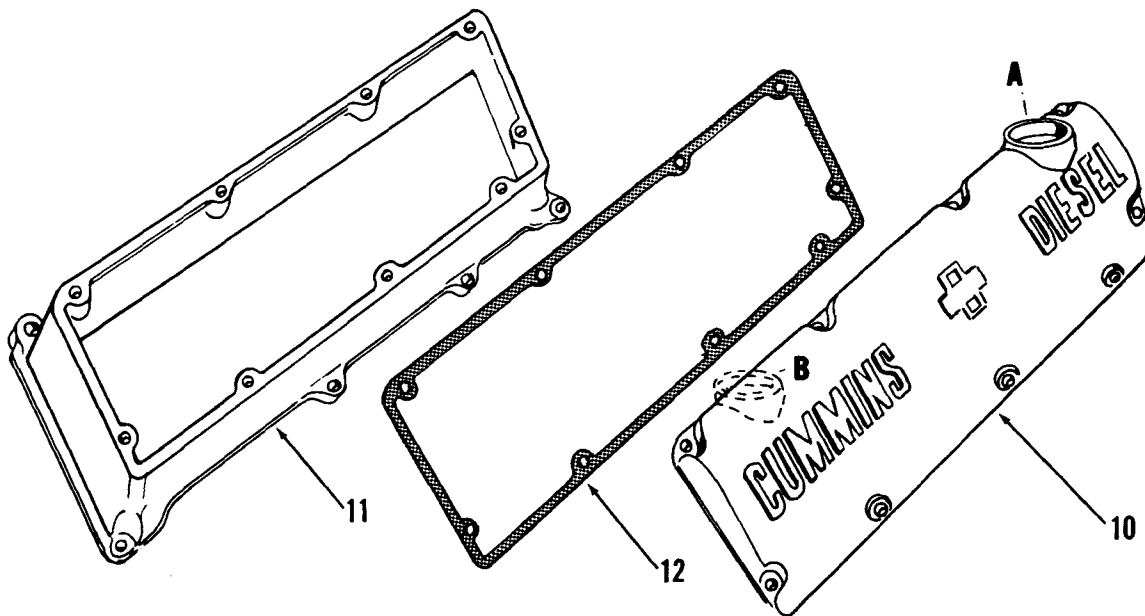
you own the best . . . repair with the best!
genuine **CUMMINS** parts



ROCKER LEVERS
Figure 1

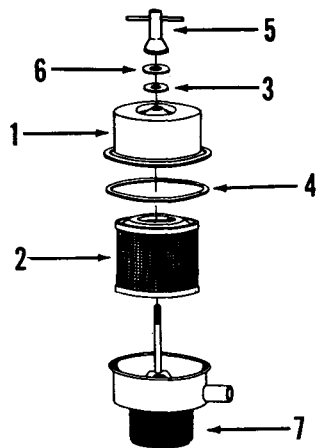


(ONE PIECE)

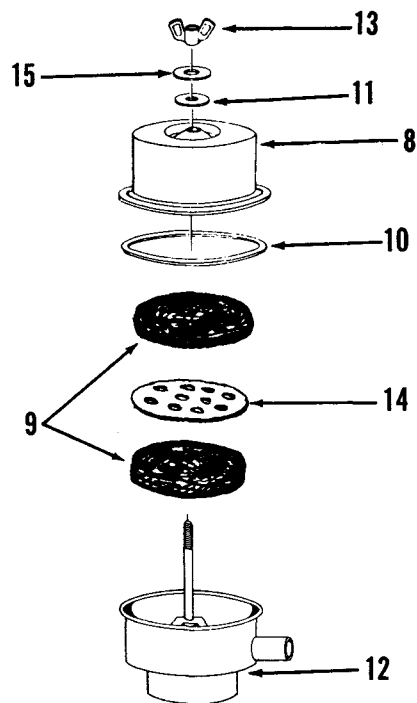


(TWO PIECE)

CYLINDER HEAD COVERS
Figure 2



6107099



CRANKCASE BREATHER
Figure 3

ROCKER LEVER, ROCKER LEVER HOUSING

U3.01
Page 1
issued 1-63

Engine Model	No. Cyl.	Engine Application										Part Number	Part Name	No. Req.	Fig. No.	Ref. No.	Use	Remarks
		B	BI	CI	I	IP	P	M	G									
ROCKER LEVER																		
V6-200,	6	X		X								BM-71295	Lever, exhaust valve rocker (141872)	6	1	3	Std.	
V8-265	8	X		X								BM-71295	Lever, exhaust valve rocker (141872)	8	1	3	Std.	
VT8-370	8								X			BM-71295	Lever, exhaust valve rocker (141872)	8	1	3	Std.	
V6-200	6	X		X								BM-71293	Lever, intake valve rocker (141873)	6	1	7	Std.	
V8-265	8	X		X								BM-71293	Lever, intake valve rocker (141873)	8	1	7	Std.	
VT8-370	8								X			BM-71293	Lever, intake valve rocker (141873)	8	1	7	Std.	
V6-200	6	X		X								BM-71291	Lever, injector rocker (146974)	6	1	8	Std.	
V8-265	8	X		X								BM-71291	Lever, injector rocker (146974)	8	1	8	Std.	
VT8-370	8								X			BM-71291	Lever, injector rocker (146974)	8	1	8	Std.	
ROCKER HOUSING (LOWER COVER)																		
V6-200	6	X		X								157817	Housing, rocker	2		1	Opt.	Lower. Use with 157818, 157819, 157820 cover.
V8-265	8	X		X								159141	Housing, rocker	2			Opt.	Lower. Use with 159131, 159138, 159140 cover.
All parts interchangeable between No. 1 and No. 2 design.																		

COMPONENT PARTS FOR ASSEMBLIES ARE SHOWN ON THE FOLLOWING PAGES.

ROCKER LEVER, ROCKER LEVER HOUSING

Part Number	Part Name	No. Req.	Fig. No.	Ref. No.	Part Number	Part Name	No. Req.	Fig. No.	Ref. No.
	ROCKER LEVER	V6 V8							
	GROUP A								
BM-71295	Lever, exhaust valve rocker (141872)	6 8	1	3					
BM-71294	Lever and bushing (141872)	6 8	1	3					
141875	Bushing, valve rocker lever	6 8	1	4					
124333	Nut, adjusting screw	6 8	1	5					
124326	Screw, adjusting	6 8	1	6					
BM-71293	Lever, intake valve rocker (141873)	6 8	1	7					
BM-71292	Lever and bushing (141873)	6 8	1	7					
141875	Bushing, valve rocker lever	6 8	1	4					
124333	Nut, adjusting screw	6 8	1	5					
124326	Screw, adjusting	6 8	1	6					
BM-71291	Lever, injector rocker (146974)	6 8	1	8					
BM-71290	Lever and bushing (146974)	6 8	1	8					
146975	Bushing, lever	6 8	1	9					
152173	Socket, injector rocker lever	6 8	1	10					
101499	Nut, adjusting screw	6 8	1	11					
142992	Screw, adjusting	6 8	1	12					

All parts interchangeable between No. 1 and No. 2 design

PARTS INDENTED ARE INCLUDED IN THE PART UNDER WHICH THEY ARE INDENTED

ROCKER LEVER HOUSING AND CYLINDER HEAD COVER

03.01.1
Page 3
Issued 1-63

Engine Model	No. Cyl.	Engine Application								Part Number	Part Name	No. Req.	Fig. No.	Ref. No.	Use	Remarks
		B	BI	CI	I	IP	P	M	G		CYLINDER HEAD COVER					
											Note: Although covers are identified for right or left bank, they can be used either bank. Identification for standard application only.					
V6-200	6	X		X						BM-76342	Cover and tube (151196)	1	2	2	Std.	L.B. "A" boss drilled. Includes 101264 tube.
V6-200	6	X		X						151196	Cover	1	2	2	Std.	R.B.
V8-265	8	X		X						BM-76106	Cover and tube (149996)	1	2	4	Std.	L.B. Includes 101264 tube.
VT8-370	8							X		BM-76106	Cover and tube (149996)	1	2	4	Std.	L.B.
V8-265	8	X		X						149996	Cover	1	2	4	Std.	R.B.
VT8-370	8							X		149996	Cover	1	2		Std.	R.B.
V6-200	6	X		X						154934	Cover	1	2	2	Opt.	R.B. No bosses.
V6-200	6	X		X						154935	Cover	1	2	2	Opt.	L.B. "B" boss drilled.
V8-265	8	X		X						156144	Cover	1	2	4	Opt.	"A" boss not drilled.
V6-200	6	X		X						157818	Cover	1	2	10	Opt.	Two piece. Plain. Use with 157817 housing.
V6-200	6	X		X						157819	Cover	1	2	10	Opt.	Two piece. "A" boss drilled. Use with 157817 housing.
V6-200	6	X		X						157820	Cover	1	2	10	Opt.	Two piece. "B" boss drilled. Use with 157817 housing.
V8-265	8	X		X						159139	Cover	1	2		Opt.	Two piece. Plain. Use with 159141 housing.
V8-265	8	X		X						159138	Cover	1	2		Opt.	Two piece. "A" boss drilled. Use with 159141 housing.
V8-265	8	X		X						159140	Cover	1	2		Opt.	Two piece. "B" boss drilled. Use with 159141 housing.

COMPONENT PARTS FOR ASSEMBLIES ARE SHOWN ON THE FOLLOWING PAGES.

MISCELLANEOUS AND MOUNTING PARTS

Engine Model	Part Number	Part Name		No. Req.	Fig. No.	Ref. No.
		BRACKET	V6	V8		
V6-200, V8-265, VT8-370	143021	Bracket, rocker lever shaft	6	8	1	1
	138935	Bracket, rocker lever shaft	2	2	1	2
		LOCKPLATE				
V6-200, V8-265, VT8-370	67282	Lockplate, locating screw	2	2	1	16
		SCREWS				
V6-200, V8-265, VT8-370	117183	Screw, rocker shaft locating	2	2	1	17
		SHAFT,ROCKER LEVER				
V6-200	BM-71418	Shaft, rocker lever (146977)	2		1	13
V8-265, VT8-370	BM-71425	Shaft, rocker lever (146976)		2	1	14
	139412	Plug, rocker shaft	4	4	1	15

MISCELLANEOUS AND MOUNTING PARTS

03.01.2
Page 5
issued 1-63

Engine Model	Part Number	Part Name	V6	No. Req.	V8	Fig. No.	Ref. No.
CAP,OIL FILLER			V6		V8		
V6-200, V8-265, VT8-370	101322	Cap, oil filler	1	1	2		1
	108474	Bushing, cap	1	1	2		
	108473	Cover, cap	1	1	2		
	108475	Cover, cap	1	1	2		
	108471	Handle, cap	1	1	2		
	106391	Pin, roll, cap	1	1	2		
	108472	Washer, cap	1	1	2		
	107981	Cap, oil filler (CI)	1	1			
GASKET							
V6-200	151708	Gasket, cover to head (Std.)	2		2		6
	157821	Gasket, cover to rocker housing (Opt.) (Use with two piece cover)	2		2		12
V8-265, VT8-370	151299	Gasket, cover to head (Std.)		2	2		7
	159142	Gasket, cover to rocker housing (Opt.) (Use with two piece cover)		2	2		
TUBE,OIL FILLER							
V6-200, V8-265, VT8-370	101264	Tube, oil filler	1	1	2		3
HARDWARE							
V6-200, V8-265, VT8-370	S-103-D	Capscrew					
	108707	Capscrew 3/8-16, UNC-2A 1 1/2"			2		5
	S-604	Lockwasher 3/8"			2		8
	S-602	Washer 13/32"			2		9

CRANKCASE BREATHER

03.02
Page 1
issued 1-63

Engine Model	No. Cyl.	Engine Application								Part Number	Part Name	No. Req.	Fig. No.	Ref. No.	Use	Remarks
		B	BI	CI	I	IP	P	M	G							
CRANKCASE BREATHER																
V6-200	6	X		X						154272	Breather, crankcase	1				Std.
V8-265	8	X		X						154272	Breather, crankcase	1				Std.
VT8-370	8								X	156810	Breather, crankcase	1				Std.

COMPONENT PARTS FOR ASSEMBLIES ARE SHOWN ON THE FOLLOWING PAGES.

CRANKCASE BREATHER

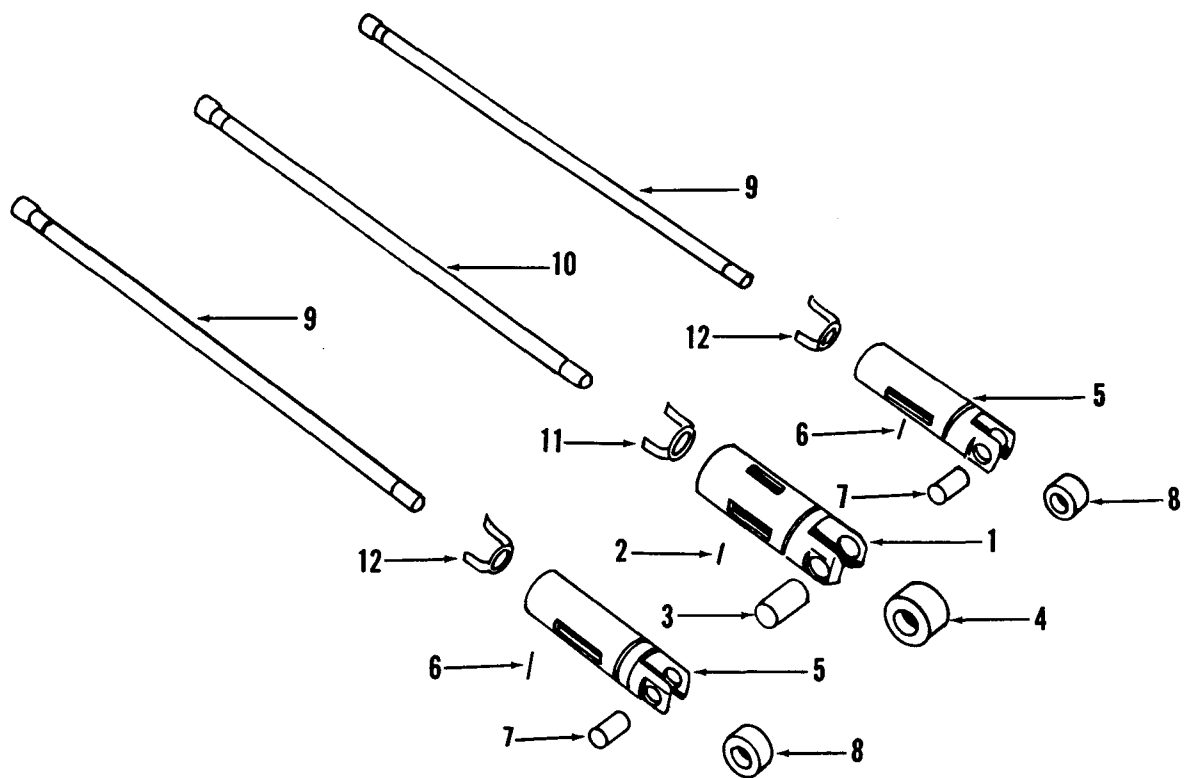
Part Number	Part Name	No. Req.	Fig. No.	Ref. No.	Part Number	Part Name	No. Req.	Fig. No.	Ref. No.
	CRANKCASE BREATHER	V6 V8							
154272	Breather, crankcase	1	1	3					
155997	Cover, breather	1	1	3					1
123716	Element	1	1	3					2
125015	Gasket, washer	1	1	3					3
125019	Gasket, cover	1	1	3					4
155998	Housing, filter	1	1	3					7
125017	Nut, wing, cover	1	1	3					5
125016	Washer, plain, cover	1	1	3					6
156810	Breather, crankcase	1	3						
155997	Cover, breather	1	3	8					
143776	Mesh, copper	1	3	9					
125019	Gasket, cover	1	3	10					
125018	Gasket, washer	1	3	11					
156812	Housing, filter	1	3	12					
125017	Nut, wing, cover	1	3	13					
156811	Plate, breather	1	3	14					
125016	Washer, cover	1	3	15					

PARTS INDENTED ARE INCLUDED IN THE PART UNDER WHICH THEY ARE INDENTED

Group 04

*cam
follower
housing*

you own the best . . . repair with the best
genuine **CUMMINS** parts



PUSH RODS AND VALVE TAPPETS
Figure 1

6207117

TAPPETS, HOUSINGS, AND LEVERS

04.01
Page 1
issued 1-63

Engine Model	No. Cyl.	Engine Application									Part Number	Part Name	No. Req.	Fig. No.	Ref. No.	Use	Remarks
		B	BI	CI	I	IP	P	M	G								
										</							

COMPONENT PARTS FOR ASSEMBLIES ARE SHOWN ON THE FOLLOWING PAGES.

TAPPETS, HOUSINGS, AND LEVERS

Part Number	Part Name	No. Req.	Fig. No.	Ref. No.	Part Number	Part Name	No. Req.	Fig. No.	Ref. No.
	TAPPETS	V6 V8							
	GROUP A								
BM-76110	Tappet, injector (150880)	6 8	1	1					
111272	Lockwire, tappet	6 8	1	2					
114223	Pin, injector tappet								
	roller	6 8	1	3					
154571	Roller, injector tappet	6 8	1	4					
BM-76111	Tappet, valve (150879)	12 16	1	5					
108186	Lockwire, tappet	12 16	1	6					
152080	Pin, valve tappet	12 16	1	7					
152082	Roller, valve tappet	12 16	1	8					

PARTS INDENTED ARE INCLUDED IN THE PART UNDER WHICH THEY ARE INDENTED

issued 1-63

Engine Model	Part Number	Part Name		No. Req.	Fig. No.	Ref. No.
		SPRINGS	V6	V8		
V6-200, V8-265, VT8-370	150913	Spring, injector tappet	6	8	1	11
	150914	Spring, valve tappet	12	16	1	12

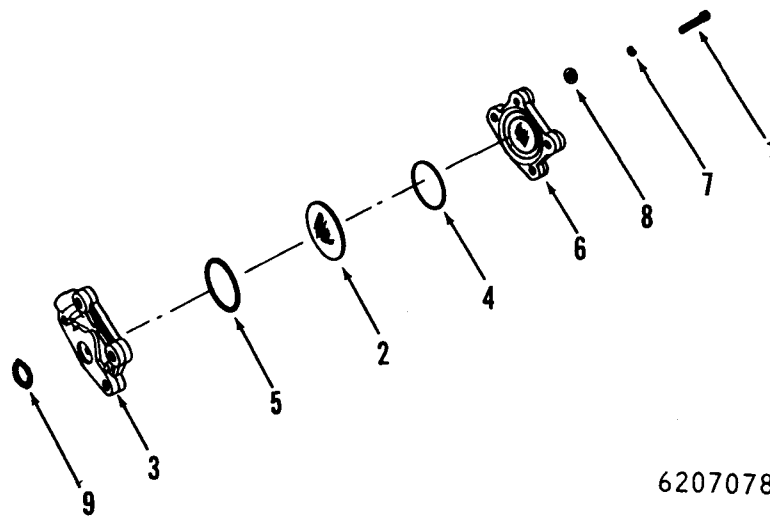
PUSH RODS

Engine Model	No. Cyl.	Engine Application									Part Number	Part Name	No. Req.	Fig. No.	Ref. No.	Use	Remarks
		B	BI	CI	I	IP	P	M	G								
PUSH RODS																	
V6-200	6	X		X						153614	Rod, valve push	12	1	9	Std.		
V8-265	8	X		X						153614	Rod, valve push	16	1	9	Std.		
VT8-370	8							X		153614	Rod, valve push	16	1	9	Std.		
V6-200	6	X		X						153615	Rod, injector push	6	1	10	Std.		
V8-265	8	X		X						153615	Rod, injector push	8	1	10	Std.		
VT8-370	8							X		153615	Rod, injector push	8	1	10	Std.		

Group 05
06

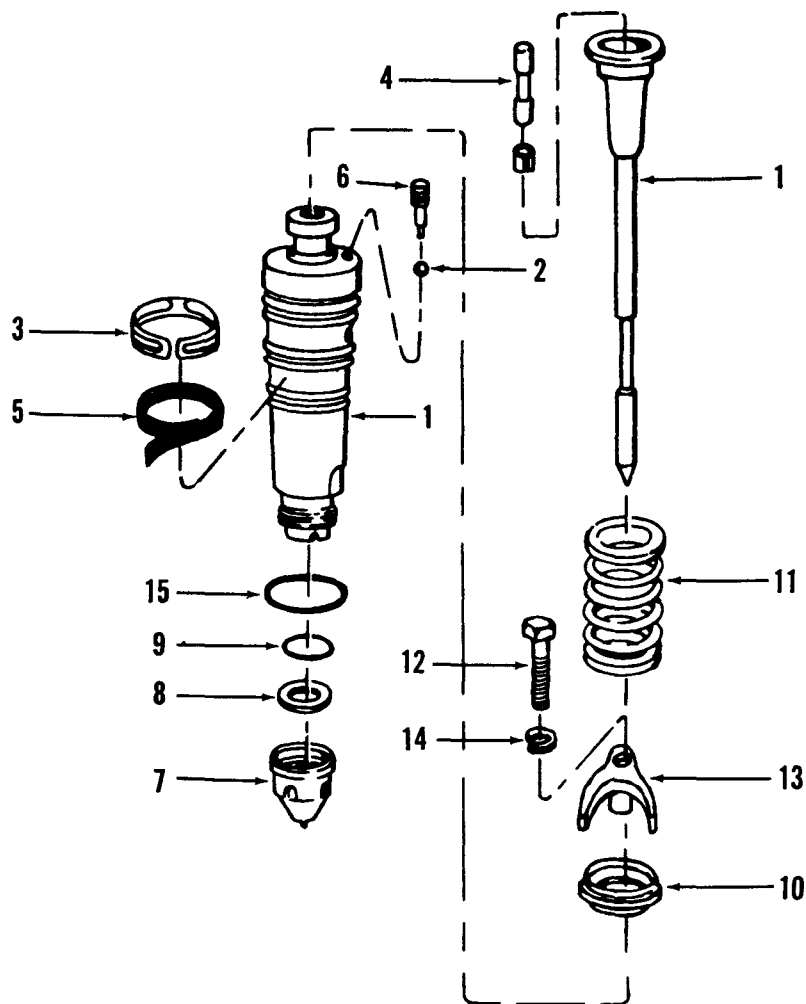
***fuel
system***

you own the best . . . repair with the best!
genuine **CUMMINS** parts

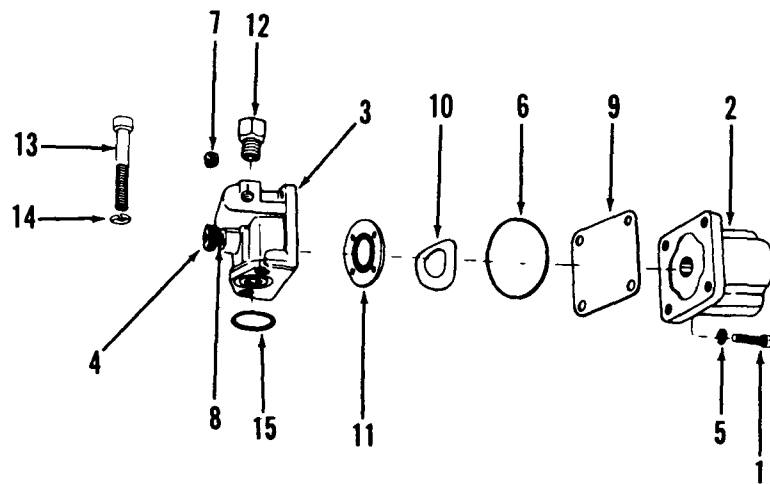


6207078

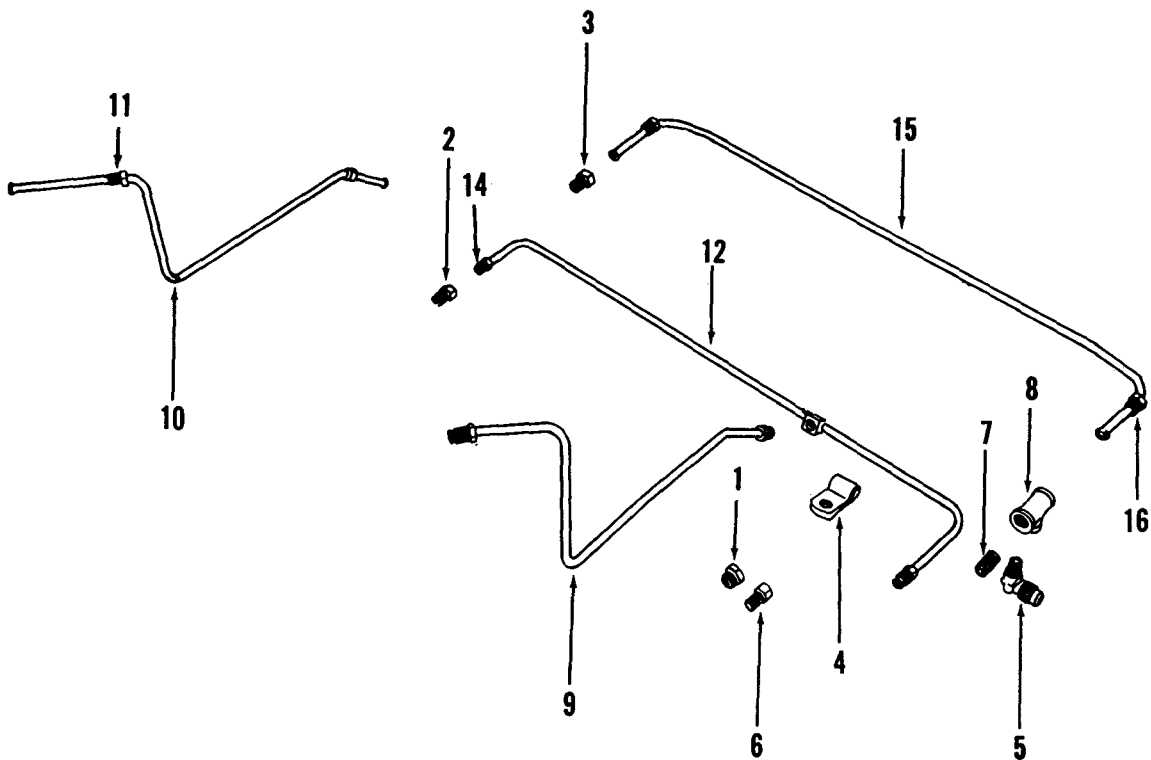
FUEL PUMP DAMPER
Figure 1



INJECTOR
Figure 2



SHUTDOWN VALVE
Figure 3



FUEL TUBING
Figure 4

PT FUEL SYSTEM

Notice: Only PT Fuel System parts which can be replaced without pump calibration are listed here. All other parts are contained in Parts Book Bulletin No. 966686-A. Eventually, reference to part number information for all models will be contained in the "proposed" Master Parts Book Bulletin, number unassigned. Right hand engines require left hand fuel pumps.

Engine Model	Part Number	Part Name	No. Req.	Fig. No.	Ref No.
		FUEL PUMP DAMPER	V6	V8	
	BM-76340	Damper, fuel	1	1	1
	153336	Body, damper	1	1	1
	S-172-C	Capscrew, damper to gear pump	2	2	1
	139834	Diaphragm	1	1	1
	S-698	Lockwasher, damper to gear pump	2	2	1
	139988	"O" ring	1	1	1
	100099	"O" ring	1	1	1
	153338	Plate, damper	1	1	1
	151900	Seal, damper to gear pump	1	1	1
	70704	Washer, damper to gear pump	2	2	1
	160514	Washer, nylon	1	1	
		INJECTOR			
		GROUP A - Models V6-200, V8-265			
	BM-79258	Injector assembly	6	8	2
	BM-79345	Body and plunger (170000)	6	8	2
	147626	Ball, check	6	8	2
	136042	Clamp, injector screen	6	8	2
	147559	Gasket, retainer	6	8	2
	140470	Link, injector plunger	6	8	2
	148338	Orifice, injector	6	8	2
	136749	Screen, body	6	8	2
	147558	Retainer, ball	6	8	2
	BM-78687	Cup, injector (159984)	6	8	2
	62409	Gasket, cup	6	8	2
	70776	"O" ring, cup	6	8	2
	148524	Guide, injector spring	6	8	2
	128040	Spring, injector	6	8	2
	131430	Capscrew, injector	6	8	2
	128002	Clamp, injector to head	6	8	2
	S-604	Lockwasher, injector	6	8	2
	101754	"O" ring, injector	24	32	2
		GROUP B - Model VT8-370			
		Same as Group A except parts shown below:			
	BM-79262	Injector assembly	8	2	
	BM-79346	Body and plunger	8	2	1
	149726	Orifice	8	2	

PT FUEL SYSTEM

Engine Model	Part Number	Part Name		No. Req.	Fig. No.	Ref. No.
		SHUTDOWN VALVE	V6	V8		
	BM-69973	Valve, shutdown (12 volt)	1	1	3	
	S-1214	Capscrew, coil to housing	4	4	3	1
	134072	Coil assembly	1	1	3	2
	S-257	Nut, terminal	1	1	3	
	129826	Housing, valve	1	1	3	3
	129838	Knob, manual override	1	1	3	4
	S-607	Lockwasher, coil to housing	4	4	3	5
	129888	"O" ring, coil to housing	1	1	3	6
	114791	"O" ring, shaft	1	1	3	
	70295	Plug, pipe	1	1	3	7
	143679	Shaft, manual override	1	1	3	8
	129839	Shield, fuel	1	1	3	9
	129768	Spring	1	1	3	10
	129827	Valve	1	1	3	11
		Mounting Parts				
	S-189-C	Capscrew, valve to housing	2	2	3	13
	S-1027	Connection, outlet	1	1	3	12
	S-600	Lockwasher, valve to housing	2	2	3	14
	154087	"O" ring, valve to housing	1	1	3	15
		FUEL TUBING				
	S-955	Bushing, shutdown valve tube to head	2	2	4	1
	S-102	Capscrew	4	4		
	148376	Connector (I.R.)	2	2	4	2
	S-1008-1	Connector, tube (I.R.)	2	2	4	3
	147991	Clip	3	3	4	4
	70468	Clip	2	2		
	70467	Clip	2	2		
	43765-A	Elbow (I.R.)	1	1	4	5
	S-1004-1	Elbow				
	S-1027	Elbow, shutdown valve tube to head (I.R.)	2	2	4	6
	S-946	Nipple (I.R.)	1	1	4	7
	114850	Spacer	8	8		
	S-1021-1	Tee, coupling	1	1		
	S-1054	Tee, coupling	1	1		
	S-933	Tee (I.R.)	1	1	4	8
V6-200	160475	Tube, supply R.B.	1			
	160476	Tube, supply L.B.	1			
		Less compressor, mechanical variable speed governor mounted on fuel pump				
	160473	Tube, supply R.B.	1			
	160474	Tube, supply L.B.	1			
		Less compressor				
	160477	Tube, supply R.B.	1			
	160478	Tube, supply L.B.	1			
		With Cummins compressor				
	160479	Tube, supply R.B.	1			
	160480	Tube, supply L.B.	1			
		With Cummins compressor, mechanical variable speed governor mounted on fuel pump				
V8-265	160481	Tube, supply R.B.		1		
	160482	Tube, supply L.B.		1		
		Less compressor				
	160483	Tube, supply R.B.		1		
	160484	Tube, supply L.B.		1		
		Less compressor, mechanical variable speed governor mounted on fuel pump				
	160485	Tube, supply R.B.		1		
	160486	Tube, supply L.B.		1		
		With compressor				

PT FUEL SYSTEM

05.01
06.01
Page 3
Issued 1-63

Engine Model	Part Number	Part Name	No. Req.	Fig. No.	Ref. No.
FUEL TUBING (CONT'D)			V6	V8	
V8-265	160487	Tube, supply R.B. With compressor, mechanical	1		
	160488	Tube, supply L.B. variable speed governor mounted on fuel pump			
V6-200,	156126	Tube, drain	1	1	
V8-265	147518	Tube, shut down valve to head (I.R.)	1		4 9
	150826	Tube, shut down valve to head (I.R.)		1	4 10
	S-1023-A	Nut, tube	2	2	4 11
	147902	Tube, supply (R.B. to L.B.) (I.R.)	1	1	4 12
	S-1023-A	Nut, tube	2	2	4 14
	147903	Tube, drain (R.B. to L.B.) (I.R.)	1	1	4 15
	S-1051	Nut, tube	2	2	4 16
FUEL FILTER					
V6-200,	BM-78791	Filter, fuel	1	1	
V8-265	BM-78669	Cartridge, filter (154709) (FF-5)	1	1	
	127506	Seal, cartridge (lathe cut)	1	1	
	BM-59481	Head, filter	1	1	
	126516	Bolt, head	1	1	
	142784	Head, filter	1	1	
	139689	Seal, cartridge	1	1	
	151940	Filter, fuel (CI)	1	1	
	151880	Capscrew	4	4	
	S-962-E	Drain cock	1	1	
	141986	Decal	1	1	
	139097	Element FF-8	1	1	
	151881	Gasket	1	1	
	151858	Head	1	1	
	8142	"O" ring	1	1	
	151939	Ring, snap	1	1	
	S-16245	Ring, snap	1	1	
	151884	Seal, pilot	1	1	
	151859	Shell and post	1	1	
	151885	Spring	1	1	
	151920	Support, filter element	1	1	
	151879	Washer	1	1	
VT8-370	BM-78793	Filter, fuel		1	
	126516	Bolt, head		2	
	BM-78672	Cartridge, filter (156172) (FF-5D)		2	
	127506	Ring, seal		2	
	135601	Head, filter		1	
	129859	Connector		1	
	160058	Bracket		1	
FLOAT TANK					
	BM-78431	Tank, fuel float		1	