

ENGINE SERIAL

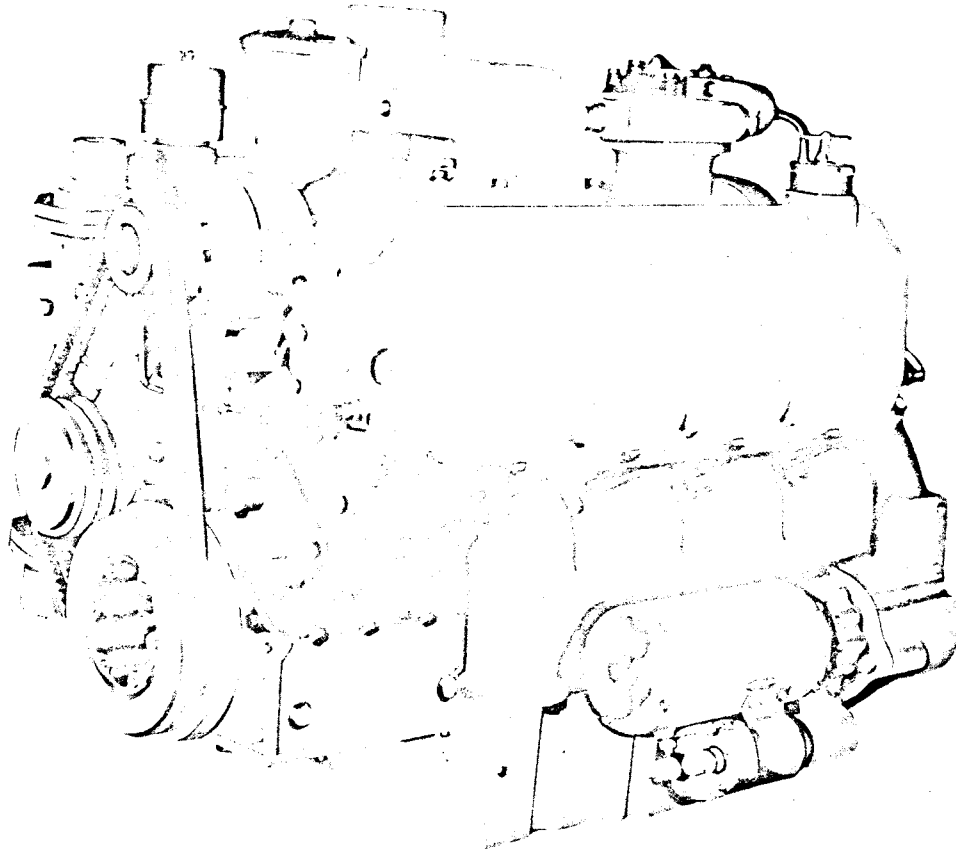
F-44108

F-44109

# Cummins Parts Catalog

Model: V-470 Series

Bulletin No. 967115-A



## Parts Ordering for: V-470 Series

Genuine Cummins Parts and service facilities are world-wide. There are more than 1600 Cummins Sales and Service locations in the principal cities of the United States and Canada, and more than 300 Sales and Service locations situated elsewhere throughout the free world. Each distribution outlet is thoroughly equipped with technical data, factory-trained mechanics, modern equipment and a full, adequate stock of Genuine Cummins Parts.

For quicker and better service, your parts requirements should be ordered from your nearest Cummins Distributor or Dealer. At any of the locations prompt, intelligent, courteous service is a basic trademark. Each is ready and eager to help in every possible way through personal contact or through the mail — at your convenience.

The satisfactory ordering and receiving of parts by the purchaser is greatly dependent upon the proper use of available information. In order that all avoidable errors may be eliminated, the following instructions are offered as the purchaser's guide:

1. Write your order clearly, using a typewriter if possible.
2. Be sure to list the correct part number. If in doubt as to the correct part number, state the model and serial number of the engine on which the part is to be used. Part numbers are usually located in various places on the part itself.
3. When possible, arrange your purchase order in part number numerical sequence.
4. Always specify shipping instructions — "Best Way" is satisfactory if you have no preference.
5. State your company name and shipping address clearly.

Genuine Cummins Parts mean **QUALITY!** They're designed and engineered to fit best in your Cummins Diesel. Each part is made of the highest quality material — on the most accurate of machines — by the top craftsmen of the trade.

You can be sure a Genuine Cummins Part will fit better — do the job better — lessen the chances of costly breakdown. When you buy replacement parts, buy quality. Buy Genuine Cummins Parts!

**YOU OWN THE BEST . . . REPAIR WITH THE BEST**

## FOREWORD

This Parts Catalog contains standard parts information for the V-470 Naturally Aspirated engines.

## IMPORTANT

Two series of V-470 engines have been manufactured by Cummins Engine Company, Inc. These can be identified by the engine serial number letter prefix. This Parts Catalog pertains **only** to the engines that have the letter "F" prefix in the engine serial number. For engines having the letter "D" prefix in the engine serial number, please refer to Parts Catalog Bulletin number L-967020-A or Bulletin number 967088.

## ENGINE APPLICATION INFORMATION

Explanation of the letter designations for the various engine applications is listed below.

Auto = Automotive Application.

B = Off highway application, less air compressor

C = Construction and mining applications, mobile type of equipment.

P = Industrial application, radiator cooled, stationary unit.

In the engine application box at the top of each page, an "X" will appear only in the application column to which the parts information on the page is applicable.

In those cases, when assemblies and/or parts are variable to applications, direction is provided to identify the assembly or parts pertinent to the Engine Application. Part numbers appearing in ( ) are for identification purposes only and should not be used when ordering service replacement parts.

## SPECIAL PARTS

Special Parts peculiar to the engine can be listed on the form below. To make certain you have ordered correct parts, refer to this form before submitting Parts Order.

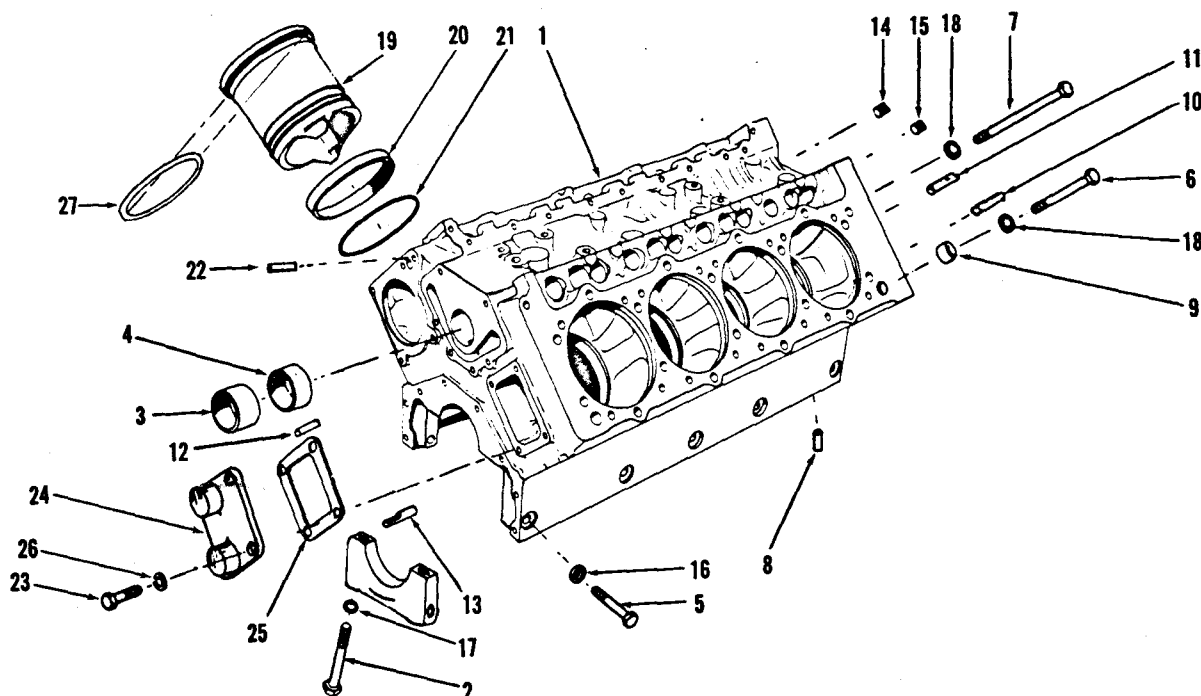
Part Number	Description
185539	Flywheel
154849	King Gear
168643	Flywheel Housing SAE #3
202821	RADIATOR
651074	FAN Blade 24 inch Blower
178685	FAN BELTS (2) also drives WATER PUMP

Cummins Distributor \_\_\_\_\_

# Table of Contents

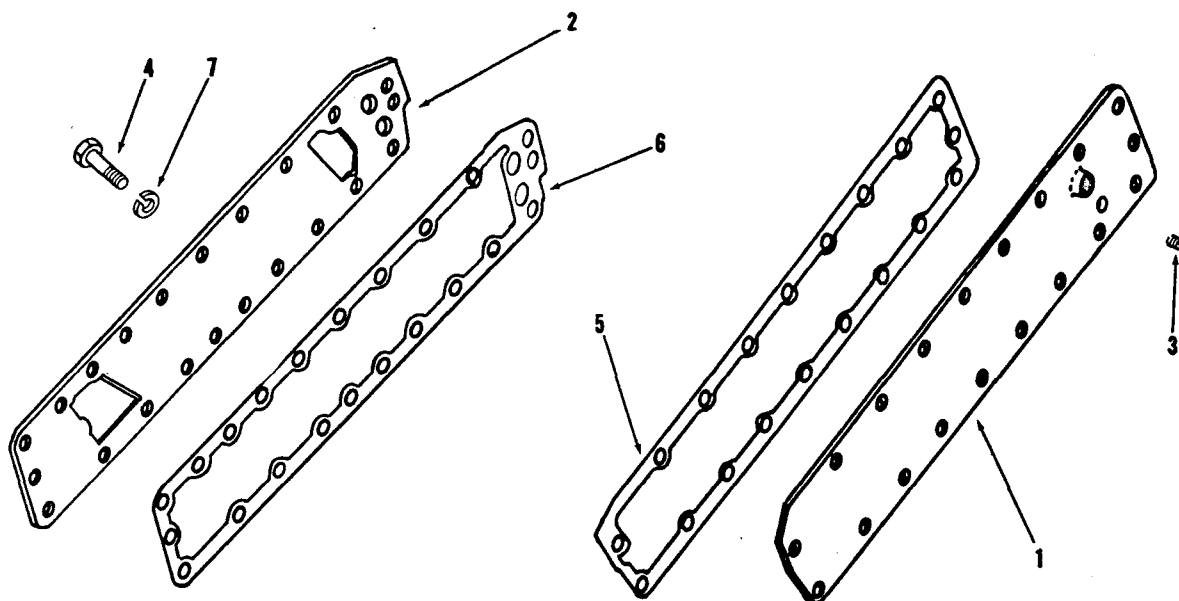
	Page	Grid
Air Compressor—Cummins Compact . . . . .	30-31	C9,10
Air Intake Manifold . . . . .	27	C6
Air Cleaner . . . . .	28-29	C7,8
Alternator . . . . .	37	D4
Breather . . . . .	10	B1
Camshaft And Cover . . . . .	6	A9
Camshaft Bushings . . . . .	1	A4
Connecting Rod . . . . .	4	A7
Corrosion Resistor . . . . .	21	B12
Crankshaft . . . . .	3	A6
Cylinder Block . . . . .	1	A4
Cylinder Head . . . . .	9	A12
Cylinder Head Cover . . . . .	10	B1
Cylinder Liner . . . . .	1	A4
Dipstick And Tube . . . . .	14,15 16	B5,6 7
Electrical Equipment . . . . .	37	D4
Exhaust Manifold . . . . .	26	C5
Fan And Guard . . . . .	24-25	C3,4
Fan Hub . . . . .	23	C2
Flywheel Housing . . . . .	38	D5
Flywheel and Ring Gear . . . . .	38	D5
Front Cover . . . . .	5	A8
Front Engine Support . . . . .	5	A8
Front Water Header Cover . . . . .	1	A4
Fuel Filter . . . . .	34	D1
Fuel Gear Pump . . . . .	34	D1
Fuel Pump Drive . . . . .	32	C11

	Page	Grid
Fuel Pump Damper . . . . .	34	D1
Fuel Pump . . . . .	34	D1
Fuel Tubing . . . . .	35	D2
Gasket Sets . . . . .	38	D5
Gear Housing And Cover . . . . .	11	B2
Injector . . . . .	33	C12
Instrument Panel . . . . .	36	D3
Lubricating Oil Cooler . . . . .	19	B10
Lubricating Oil Filter . . . . .	17	B8
Lubricating Oil By-Pass Filter . . . . .	18	B9
Lubricating Oil Pump . . . . .	12-13	B3,4
Main Bearing Shells . . . . .	3	A6
Numerical Index . . . . .	39-42	D6-9
Oil Pan . . . . .	14,15 16	B5,6 7
Pistons . . . . .	4	A7
Piston Rings . . . . .	4	A7
Push Rods . . . . .	7	A10
Radiator . . . . .	24-25	C3,4
Rear Engine Support . . . . .	5	A8
Rocker Levers . . . . .	8	A11
Shutdown Valve . . . . .	33	C12
Starting Motor . . . . .	37	D4
Thermostat And Housing . . . . .	22	C1
Tappets . . . . .	7	A10
Vibration Damper . . . . .	3	A6
Water Header Cover . . . . .	2	A5
Water Pump And Pulley . . . . .	20	B11



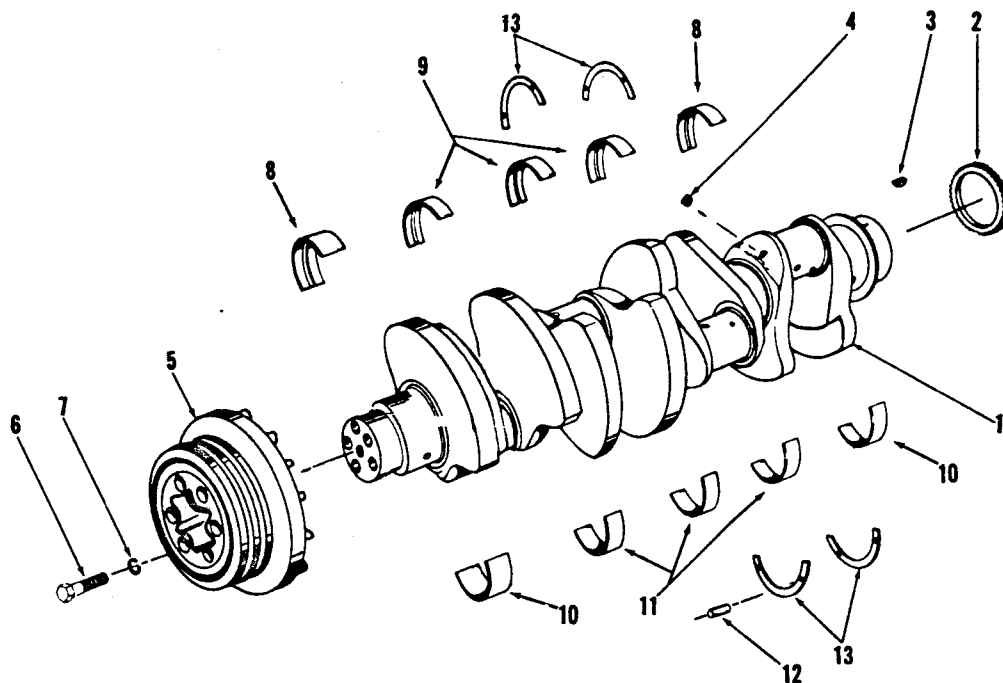
ENGINE APPLICATION		AUTOMOTIVE		X	B - OFF-HIGHWAY		C - CONSTRUCTION & INDUSTRIAL		X	P - INDUSTRIAL POWER		X
PART NUMBER	PART NAME	NO. REQ'D.	REF. NO.	PART NUMBER	PART NAME	NO. REQ'D.	REF. NO.					
	<b>CYLINDER BLOCK</b>			553371	Data plate	1						
BM-99814	Block, cylinder (183070)	1	1	S-2286	Screw, data plate	4						
180676	Bolt, main bearing cap (9/16"-18 x 4-5/8")	10	2	70760	Dowel	1	22					
554003	Bushing, camshaft (No. 1 and 5 position)	2	3	<b>FRONT WATER HEADER COVER</b>								
554004	Bushing, camshaft (No. 2, 3, and 4 position)	3	4	S-112	Capscrew, water header cover	4	23					
188395	Capscrew, main bearing side locking (9/16"-18 x 2-5/8")	10	5	167801	Cover, water header	1	24					
162182	Capscrew, cylinder head (short) (1/2"-20 x 4-15/16")	26	6	167802	Gasket, water header cover	1	25					
162183	Capscrew, cylinder head (long) (1/2"-20 x 8-7/8")	10	7	S-604	Lockwasher, water header cover	4	26					
148547	Dowel, rear main bearing cap	2	8	<b>OVERSIZE FOR SERVICE</b>								
100973	Dowel ring, cylinder head to block	4	9	171786	Shim liner (.007)	A/R	27					
69562	Dowel, gear housing to block (Master)	2	10	171787	Shim liner (.010)	A/R	27					
102957	Dowel, gear housing to block (Diamond)	2	11	171788	Shim liner (.012)	A/R	27					
70645	Dowel, front cover to block (Master)	1	12	171789	Shim liner (.014)	A/R	27					
68568	Dowel, front cover to block (Diamond)	1	13	171790	Shim liner (.021)	A/R	27					
67622	Plug, pipe (3/8")	2	14	<b>SEMI-FINISHED MAIN BEARING CAPS</b>								
S-911-B	Plug, pipe (1/4")	4	15	193010	Main bearing cap front	1						
188394	Washer, main bearing side locking capscREW (5/8")	10	16	193013	Main bearing cap intermediate No. 2	1						
164601	Washer, main bearing cap (9/16")	10	17	193011	Main bearing cap intermediate No. 4	1						
153411	Washer, cylinder head capscREW (9/16")	36	18	193012	Main bearing cap intermediate No. 3	1						
	<b>MOUNTING PARTS</b>			193009	Main bearing cap rear	1						
179710	Liner, cylinder	8	19									
171880	Seal, crevice	8	20									
171270	Packing, cylinder liner	8	21									

PARTS INDENTED ARE INCLUDED IN THE PART UNDER WHICH THEY ARE INDENTED



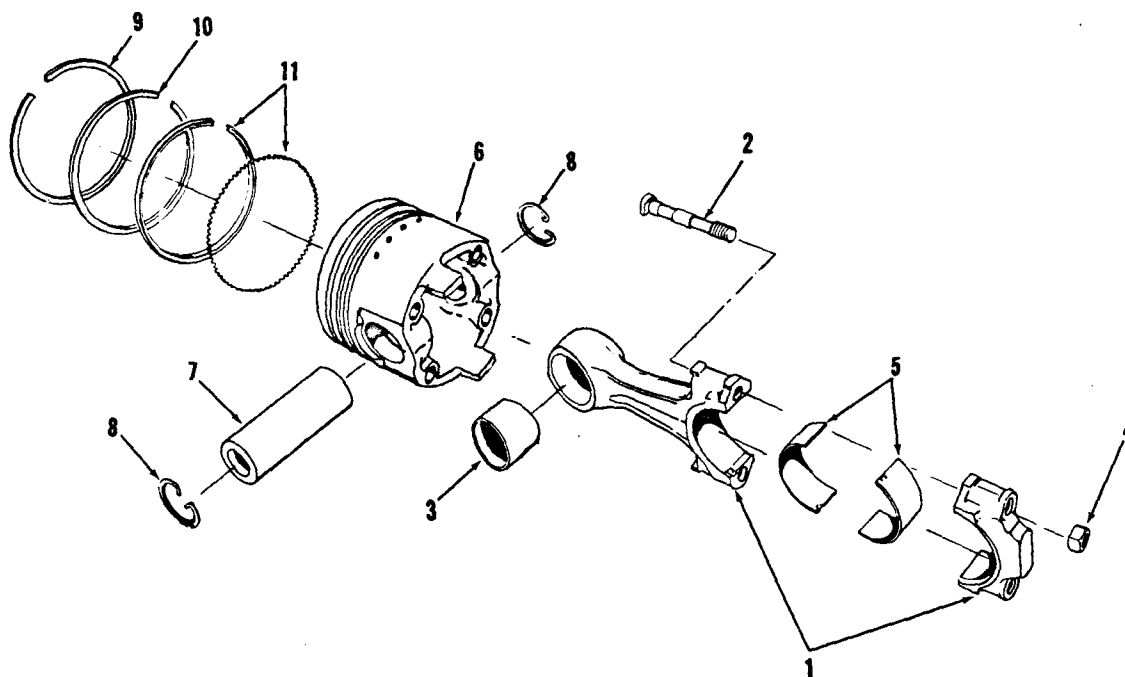
ENGINE APPLICATION		AUTOMOTIVE		X	B - OFF-HIGHWAY		C - CONSTRUCTION & INDUSTRIAL		X	P - INDUSTRIAL POWER		X
PART NUMBER	PART NAME	NO. REQ'D.	REF. NO.	PART NUMBER	PART NAME	NO. REQ'D.	REF. NO.					
	<b>WATER HEADER COVER</b>											
193557	Cover, water header (L.B.)	1	1									
176596	Cover, water header (R.B.)	1	2									
68606	Plug, pipe (1/8"-27 NPTF)	1	3									
	<b>MOUNTING PARTS</b>											
S-109	Capscrew, cover to block (3/8"-16 x 7/8")	30	4									
167800	Gasket, cover to block (L.B.)	1	5									
176598	Gasket, cover to block (R.B.)	1	6									
S-604	Lockwasher (3/8") cover to block	30	7									

PARTS INDENTED ARE INCLUDED IN THE PART UNDER WHICH THEY ARE INDENTED.



ENGINE APPLICATION		AUTOMOTIVE		X	B - OFF-HIGHWAY		C - CONSTRUCTION & INDUSTRIAL		X	P - INDUSTRIAL POWER		X			
PART NUMBER		PART NAME		NO. REQ'D.		REF. NO.		PART NUMBER		PART NAME		NO. REQ'D.		REF. NO.	
		<b>CRANKSHAFT</b>								<b>MAIN BEARINGS</b>					
BM-99677	Crankshaft assembly	1				BM-99820	*	Bearing set, main (Std.)	1						
182360	Crankshaft	1	1			182310		Bearing, main (Upper 1 and 5)	2	8					
177086	Gear, crankshaft	1	2			182400		Bearing, main (Upper 2,3 and 4)	3	9					
144131	Key, crankshaft gear	1	3			182200		Bearing, main (Lower 1 and 5)	2	10					
S-911-B	Plug, pipe (1/8"-27 NPTF)	4	4			182210		Bearing, main (Lower 2,3 and 4)	3	11					
						128765		Dowel, half ring	2	12					
						173640		Half ring, crankshaft thrust (Upper)	2	13					
						553670		Half ring, crankshaft thrust (Lower)	2	13					
						553671		Half ring, crankshaft thrust (.010")	2	13					
						553672		Half ring, crankshaft thrust (.020")	2	13					
BM-96141	Damper, vibration (175172)	1	5												
S-149-B	Capscrew, damper (1/2"-20 x 1 1/2")	5	6												
S-608	Lockwasher, damper (1/2")	5	7												
							*	Main bearings may be purchased in .010", .020", .030" or .040" under-size.							

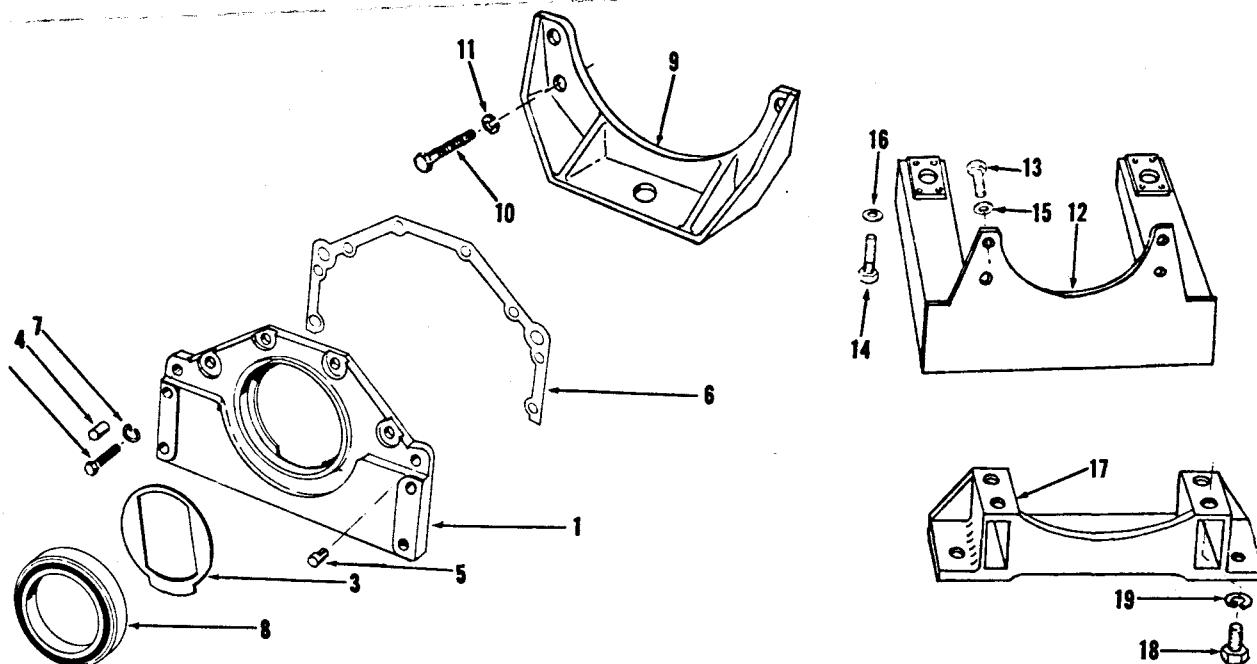
PARTS INDENTED ARE INCLUDED IN THE PART UNDER WHICH THEY ARE INDENTED



ENGINE APPLICATION		AUTOMOTIVE		X		B - OFF-HIGHWAY		C - CONSTRUCTION & INDUSTRIAL		X		P - INDUSTRIAL POWER		X	
PART NUMBER		PART NAME		NO. REQ'D.		REF. NO.		PART NUMBER		PART NAME		NO. REQ'D.		REF. NO.	
		<b>CONNECTING ROD</b>								<b>PISTON</b>					
BM-78784		Rod, connecting (166452)	8	1	BM-96200	Piston, assembly (Std.)	8								
157626		Bolt, connecting rod (7/16"-20 x 3-5/16")	16	2	183510	Piston	8							6	
195360		Bushing, piston pin	8	3	151770	Pin, piston	8							7	
152838		Nut, connecting rod bolt (7/16")	16	4	157978	Ring, snap	16							8	
157620	*	Bearing, connecting rod (Std.)	16	5											
	*	Connecting rod bearing shells may be purchased in .010", .020", .030" and .040" undersize.													
					AR-61400	Ring set, piston (Std.)	8								
					171690	Ring, compression (Top)	8							9	
					208990	Ring, compression	8							10	
					204930	Ring, oil	8							11	

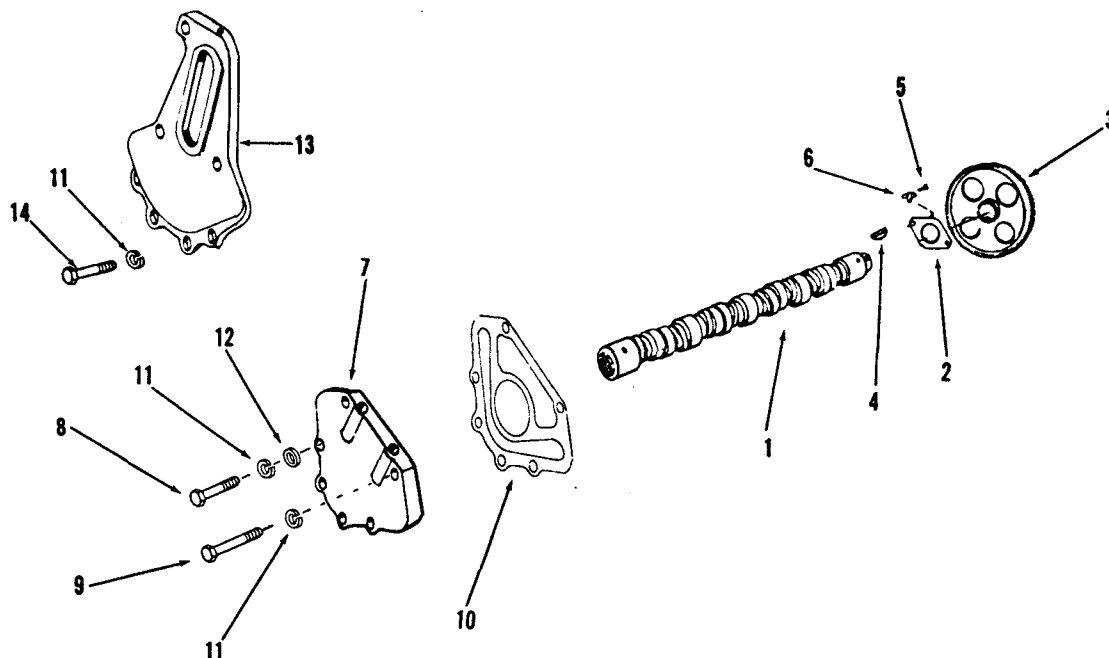
PARTS INDENTED ARE INCLUDED IN THE PART UNDER WHICH THEY ARE INDENTED





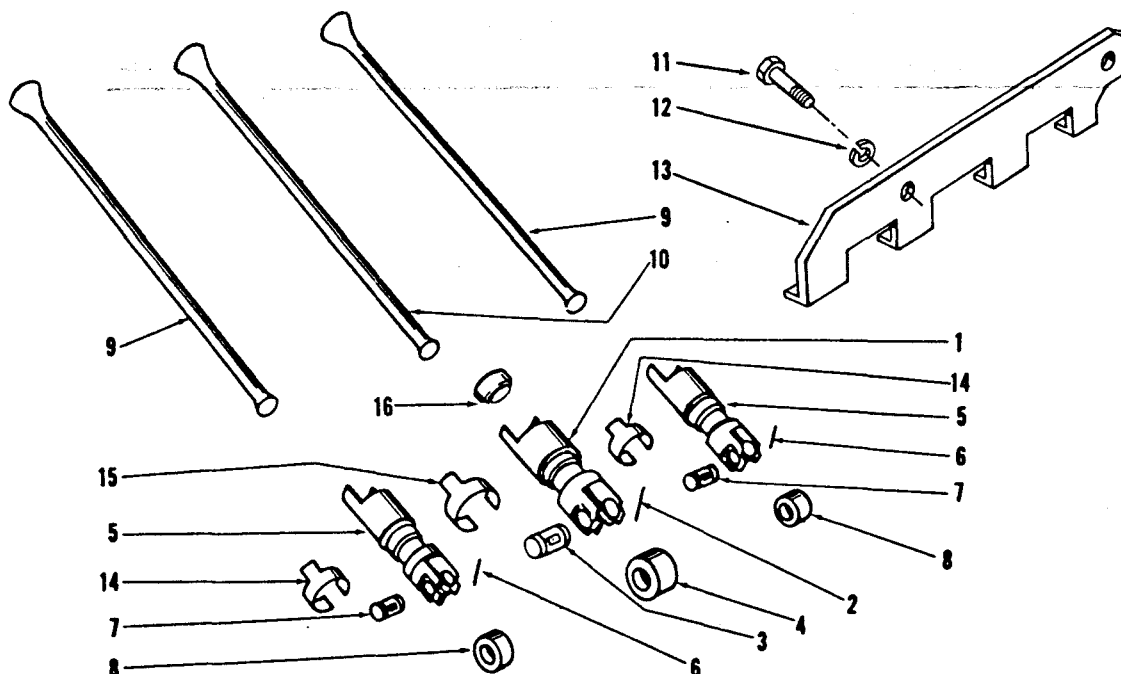
ENGINE APPLICATION		AUTOMOTIVE		X	B - OFF-HIGHWAY		C - CONSTRUCTION & INDUSTRIAL		X	P - INDUSTRIAL POWER		X
PART NUMBER	PART NAME	NO. REQ'D.	REF. NO.		PART NUMBER	PART NAME	NO. REQ'D.	REF. NO.				
	<b>FRONT COVER</b>					<b>FRONT ENGINE SUPPORT</b>						
188393	Cover, front	1	1			<b>Auto, C Applications</b>						
S-109	Capscrew, front cover (3/8"-16 x 7/8")	4	2		188397	Support, front	1	9				
173090	Deflector, oil	1	3			<b>MOUNTING PARTS</b>						
70645	Dowel (Master)	1	4									
68568	Dowel (Diamond)	1	5									
188396	Gasket, front cover	1	6		106289	Capscrew, front support (1/2"-13 x 2-1/4")	4	10				
S-604	Lockwasher (3/8")	4	7		S-608	Lockwasher (1/2")	4	11				
551514	Seal, oil	1	8			<b>P Applications</b>						
						Same as above except:						
					650368	Support, front	1	12				
					106289	Capscrew, support to block	4	13				
					S-139	Capscrew, radiator base mounting	2	14				
					S-608	Lockwasher	4	15				
					S-603	Lockwasher	2	16				
						<b>P Application Only</b>						
					650450	Support, rear engine	1	17				
					S-145	Capscrew (1/2"-13 x 1-1/4")	4	18				
					S-608	Lockwasher (1/2")	4	19				

PARTS INDENTED ARE INCLUDED IN THE PART UNDER WHICH THEY ARE INDENTED



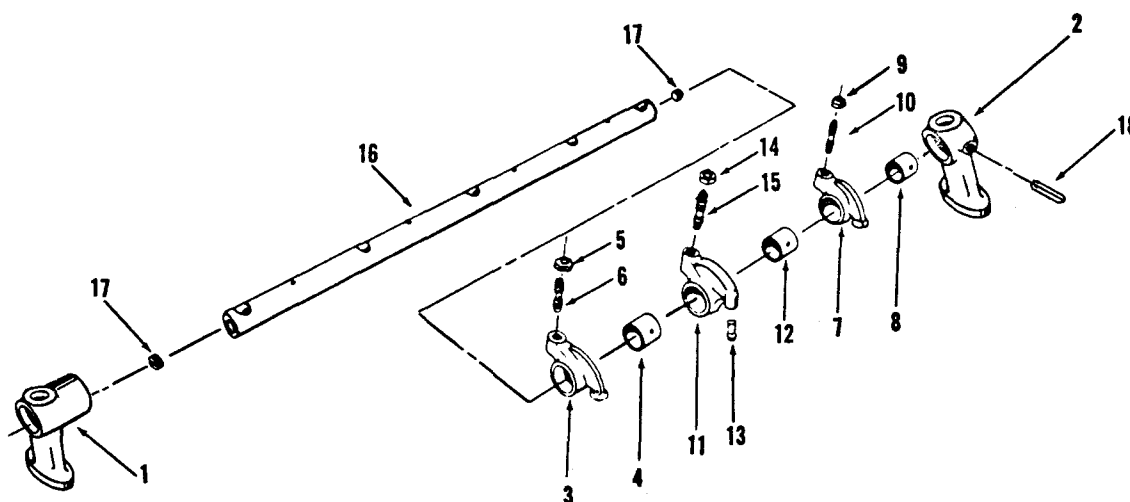
ENGINE APPLICATION		AUTOMOTIVE		X	B - OFF-HIGHWAY		C - CONSTRUCTION & INDUSTRIAL		X	P - INDUSTRIAL POWER		X
PART NUMBER	PART NAME	NO. REQ'D.	REF. NO.	PART NUMBER	PART NAME	NO. REQ'D.	REF. NO.					
AR-60615 201050 167305 187649 S-313	<b>CAMSHAFT</b>				<b>CAMSHAFT COVER</b>							
	<b>All Applications</b>			167834	Cover, camshaft	1	7					
	Camshaft	1		108707	Capscrew, camshaft cover (3/8"-16 x 1-1/2")	5	8					
	Camshaft	1	1	S-137	Capscrew, camshaft cover (3/8"-16 x 2")	1	9					
	Bearing, camshaft thrust	1	2	550164	Gasket, camshaft cover	1	10					
	Gear, camshaft	1	3	S-604	Lockwasher, cover (3/8")	6	11					
	Key, camshaft	1	4	S-602	Washer, plain (13/32")	5	12					
	<b>MOUNTING PARTS</b>				<b>HIGH MOUNT FAN</b>							
	Capscrew, thrust bearing (5/16"-18 x 3/4")	2	5		Same as above except:							
	Lockplate, thrust bearing	2	6									
S-107  68908-A				ADD:								
				182697	Cover, camshaft	1	13					
				S-103-D	Capscrew, camshaft cover (3/8"-16 x 1-1/4")	4	14					
				OMIT:								
				S-602	Washer, plain	5	12					
				S-137	Capscrew, camshaft cover	1	9					
				108707	Capscrew (3/8"-16 x 1-1/2")	3	8					

PARTS INDENTED ARE INCLUDED IN THE PART UNDER WHICH THEY ARE INDENTED



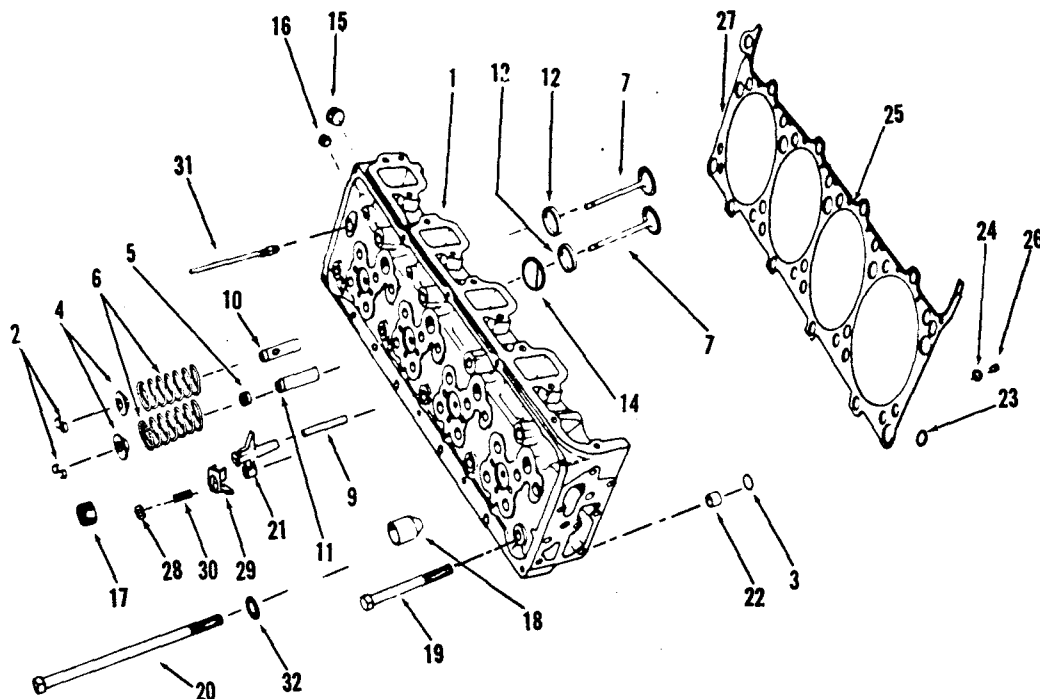
ENGINE APPLICATION		AUTOMOTIVE		X	B - OFF-HIGHWAY		C - CONSTRUCTION & INDUSTRIAL		X	P - INDUSTRIAL POWER		X
PART NUMBER	PART NAME	NO. REQ'D.	REF. NO.	PART NUMBER	PART NAME	NO. REQ'D.	REF. NO.					
<b>PUSH RODS AND TAPPETS</b>												
BM-94016	Tappet, injector assembly (171936)	8	1									
107738	Socket	8	16									
108187	Lockwire, tappet	8	2									
114223	Pin, injector tappet roller	8	3									
154571	Roller, injector tappet	8	4									
BM-94014	Tappet, valve (171937)	16	5									
108186	Lockwire, tappet	16	6									
169154	Pin, valve tappet	16	7									
153679	Roller, valve tappet	16	8									
168209	Rod, valve push	16	9									
170326	Rod, injector push	8	10									
<b>MOUNTING PARTS</b>												
S-110	Capscrew, tappet guide plate (5/16"-18 x 5/8")	16	11									
S-605	Lockwasher, tappet guide plate (5/16")	16	12									
551084	Plate, tappet guide	8	13									
156438	Spring, valve tappet	16	14									
156439	Spring, injector tappet	8	15									

PARTS INDENTED ARE INCLUDED IN THE PART UNDER WHICH THEY ARE INDENTED



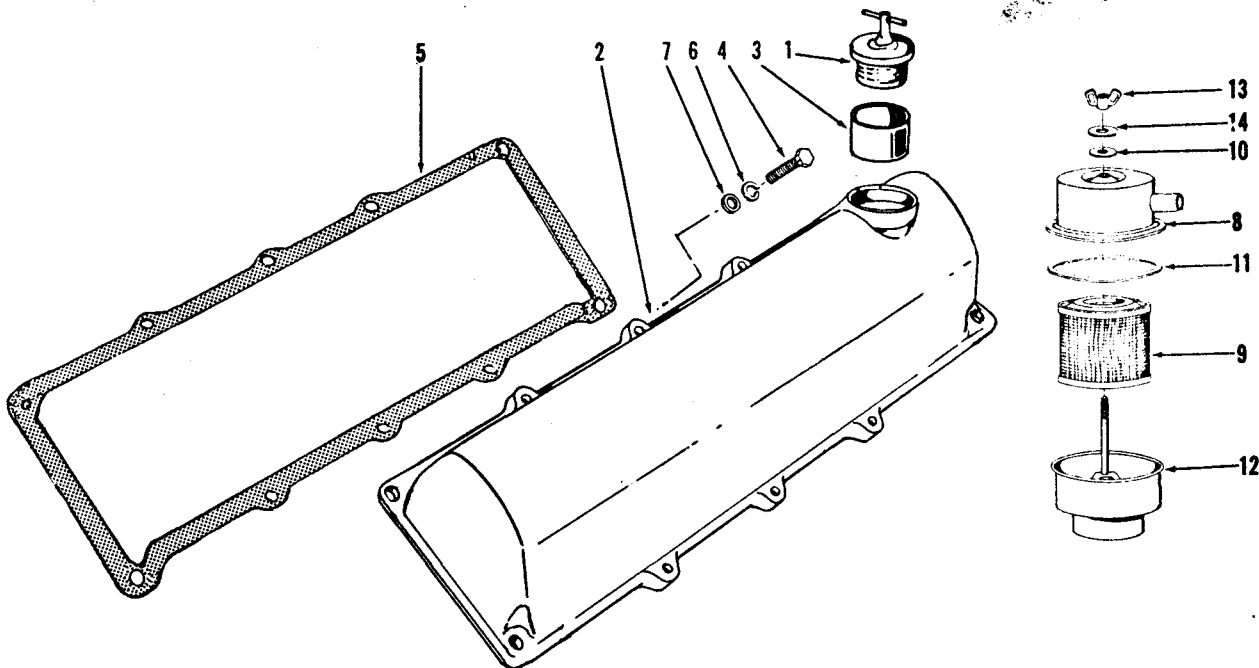
ENGINE APPLICATION		AUTOMOTIVE		X	B - OFF-HIGHWAY		C - CONSTRUCTION & INDUSTRIAL		X	P - INDUSTRIAL POWER		X
PART NUMBER	PART NAME	NO. REQ'D.	REF. NO.		PART NUMBER	PART NAME	NO. REQ'D.	REF. NO.				
	ROCKER LEVERS											
154109	Bracket, rocker lever shaft	8	1									
551608	Bracket, rocker lever shaft	2	2									
BM-79723	Lever, exhaust valve rocker (168285)	8										
BM-79722	Lever and bushing	8	3									
152937	Bushing, valve rocker lever	8	4									
S-212	Nut, adjusting screw (1/2")	8	5									
168306	Screw, adjusting	8	6									
BM-79725	Lever, intake rocker (168255)	8										
BM-79724	Lever and bushing	8	7									
152937	Bushing, valve rocker lever	8	8									
S-212	Nut, adjusting screw	8	9									
168306	Screw, adjusting	8	10									
BM-99987	Lever, injector rocker (194038)	8										
BM-99986	Lever and bushing	8	11									
152936	Bushing, injector rocker lever	8	12									
194037	Socket, injector link	8	13									
S-212	Nut, adjusting screw	8	14									
168306	Screw, adjusting	8	15									
AR-60508	Shaft, rocker lever (551607)	2	16									
161825	Plug, rocker shaft	4	17									
551609	Pin, rocker shaft locating	2	18									

PARTS INDENTED ARE INCLUDED IN THE PART UNDER WHICH THEY ARE INDENTED



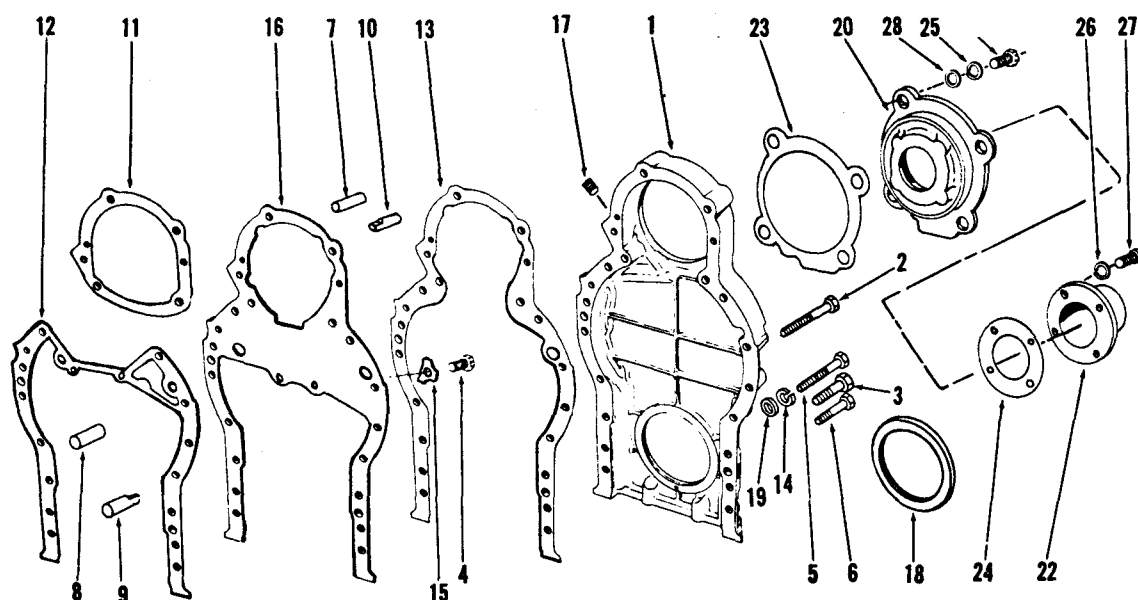
ENGINE APPLICATION		AUTOMOTIVE		B - OFF-HIGHWAY		C - CONSTRUCTION & INDUSTRIAL		P - INDUSTRIAL POWER	
			X				X		X
PART NUMBER	PART NAME	NO. REQ'D.	REF. NO.	PART NUMBER	PART NAME	NO. REQ'D.	REF. NO.		
	CYLINDER HEAD				MOUNTING PARTS				
AR-60078	Head assembly, cylinder (157782)	2	1	162182	Capscrew, cylinder head (short)	26	19		
166772	Half collet, valve	64	2	162183	Capscrew, cylinder head (long)	10	20		
155441	Retainer, spring	32	4	156879	Crosshead, valve	16	21		
156541	Seal, intake valve	16	5	100973	Dowel ring, cylinder head to block	4	22		
163037	Spring, valve	32	6	553019	"O" ring	4	3		
166774	Valve, exhaust & intake	32	7	BM-79721	Gasket, cylinder head (190740)	2	27		
AR-60079	Head assembly, less valves	2		156081	Grommet	12	23		
154220	Guide, crosshead	16	9	156082	Grommet, oil and water	34	24		
154946	Guide, exhaust valve	16	10	156674	Grommet, push tube opening	2	25		
551759	Guide, intake valve	16	11	181272	Retainer, grommet	34	26		
195000	Insert, valve seat, intake and exhaust	32	12	S-273	Nut, crosshead adjusting	16	28		
553461	Plate, swirl	16	14	190817	Retainer, crosshead (exhaust)	8	29		
551475	Plug, cup	8		147389	Screw, crosshead adjusting	16	30		
550973	Plug, pipe	16		BM-78775	Tube, vent (153882)	2	31		
S-910-B	Plug, pipe (1/4")	2	15	S-1003-1	Connector, tube	2			
S-911-B	Plug, pipe (1/8")	6	16	S-1022-A	Nut, tube	2			
S-995	Plug, pipe (3/4")	8	17	153411	Washer, cylinder head capscrew	36	32		
169630	Sleeve, injector	8	18						
					OPTIONAL				
				AR-00588	Gasket, cylinder head (.010")	2			
				AR-00589	Gasket, cylinder head (.020")	2			
				171999	Guide, valve crosshead (oversize)	A/R			

PARTS INDENTED ARE INCLUDED IN THE PART UNDER WHICH THEY ARE INDENTED



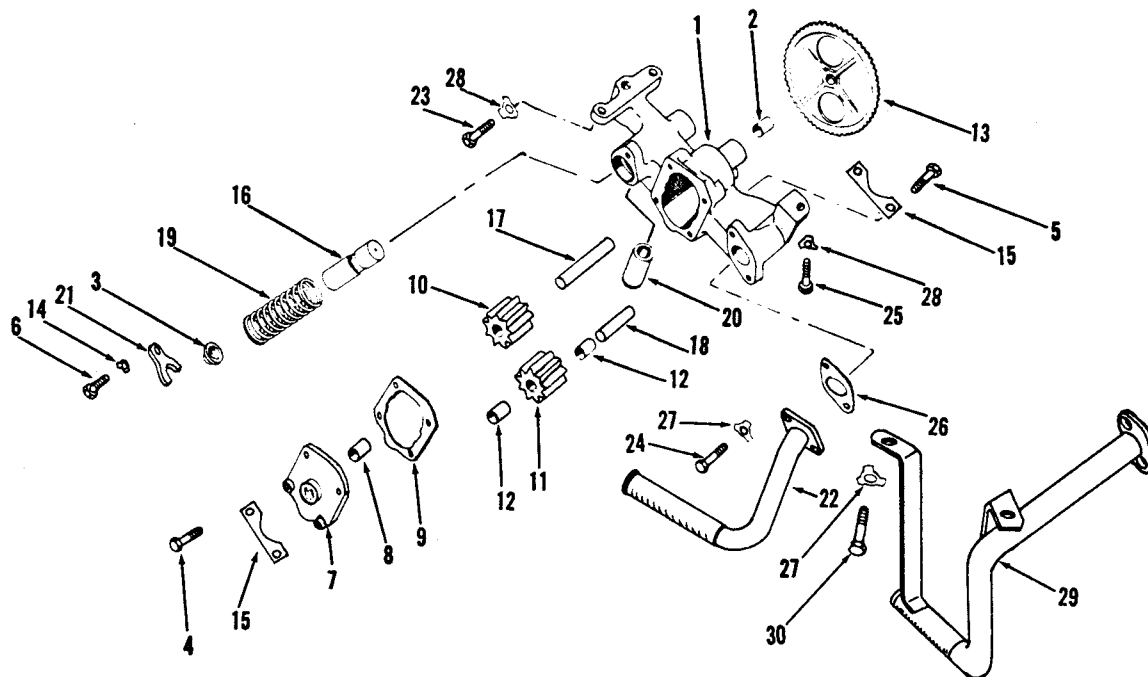
ENGINE APPLICATION		AUTOMOTIVE		X		B - OFF-HIGHWAY		C - CONSTRUCTION & INDUSTRIAL		X		P - INDUSTRIAL POWER		X	
PART NUMBER		PART NAME		NO. REF. REQ'D. NO.		PART NUMBER		PART NAME		NO. REF. REQ'D. NO.					
		CYLINDER HEAD COVER						BREATHER							
		Auto Application						All Applications							
101322	Cap, oil filler	1	1	154272	Breather, crankcase	1									
AR-60122	Cover and tube (R.B.)	1		155997	Cover, breather	1								8	
551786	Cover, cylinder head (R.B.)	1	2	AF-250	Element	1								9	
550113	Tube, filler	1	3	125015	Gasket, washer	1								10	
551786	Cover, cylinder head (L.B.)	1		125019	Gasket, cover	1								11	
				155998	Housing, element	1								12	
				125017	Nut, wing, cover	1								13	
				125016	Washer, plain cover	1								14	
		C. P Applications													
		Same as above except:													
107981	Cap, oil filler	1	1												
		MOUNTING PARTS													
108707	Capscrew, cover (3/8"-16 x 1 1/2")	20	4												
157018	Gasket, cover	2	5												
S-604	Lockwasher (3/8")	20	6												
S-602	Washer, plain (13/32")	20	7												

PARTS INDENTED ARE INCLUDED IN THE PART UNDER WHICH THEY ARE INDENTED



ENGINE APPLICATION		AUTOMOTIVE		X	B - OFF-HIGHWAY		C - CONSTRUCTION & INDUSTRIAL		X	P - INDUSTRIAL POWER		X
PART NUMBER	PART NAME	NO. REQ'D.	REF. NO.	PART NUMBER	PART NAME	NO. REQ'D.	REF. NO.					
	<b>GEAR HOUSING</b>				<b>C, P Applications</b>							
	<b>Auto Application</b>				Same as Auto except:							
168644	Housing, gear	1	1	171627	Housing, gear (P)	1	1					
S-102-D	Capscrew, housing to block (3/8"-16 x 3")	1	2	172645	Housing, gear (C)	1	1					
S-104	Capscrew, housing to block (3/8"-16 x 2-1/4")	6	3									
S-109	Capscrew, plate to block (3/8"-16 x 7/8")	2	4		<b>GEAR HOUSING COVER</b>							
S-126	Capscrew, housing to block (3/8"-16 x 2-1/2")	1	5		<b>Auto Application Only</b>							
108707	Capscrew, housing to block (3/8"-16 x 1-1/2")	6	6	551161	Cover, gear housing	1	20					
9089	Dowel (Master)	6	7	S-163	Capscrew (3/8"-16 x 3-1/4")	4	21					
69562	Dowel (Master)	1	8	551160	Cover, drive shaft	1	22					
102957	Dowel (Diamond)	1	9	153433	Gasket, support	1	23					
153807	Dowel (Diamond)	1	10	550123	Gasket	1	24					
167993	Gasket, compressor support	1	11	S-604	Lockwasher (3/8")	4	25					
168649	Gasket, plate to block	1	12	S-607	Lockwasher (3/16")	4	26					
168650	Gasket, gear housing to plate	1	13	131449	Screw	4	27					
S-604	Lockwasher, housing to block (3/8")	14	14	S-602	Washer, plain (13/32")	4	28					
175282	Lockplate, plate to block	2	15									
551467	Plate, gear housing	1	16									
S-911-B	Plug, pipe (1/8")	1	17									
551515	Seal, oil	1	18									
S-602	Washer, plain (13/32")	14	19									

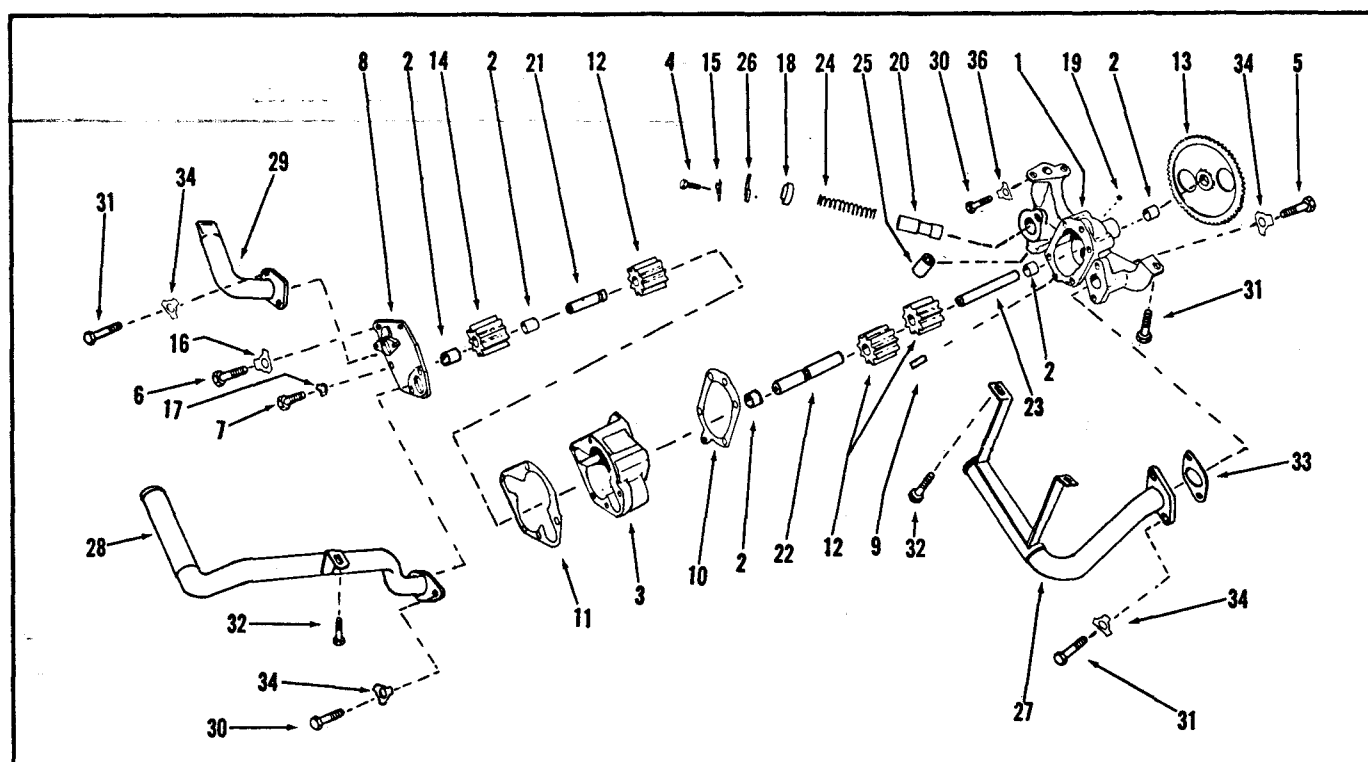
PARTS INDENTED ARE INCLUDED IN THE PART UNDER WHICH THEY ARE INDENTED



ENGINE APPLICATION		AUTOMOTIVE		B - OFF-HIGHWAY		C - CONSTRUCTION & INDUSTRIAL		P - INDUSTRIAL POWER	
		X						X	
PART NUMBER	PART NAME	NO. REQ'D.	REF. NO.	PART NUMBER	PART NAME	NO. REQ'D.	REF. NO.		
	LUBRICATING OIL PUMP				MOUNTING PARTS				
	Rear Sump Pan			S-103-D	Capscrew, pump to block	2	23		
				S-109	Capscrew, tube to pump	2	24		
	Auto, P Application			S-112	Capscrew, pump to block	1	25		
AR-60098	Pump, lubricating oil	1		164916	Gasket, tube to pump	1	26		
AR-60089	Body and bushing (187011)	1	1	109319	Lockplate, tube to pump	2	27		
68586	Bushing	1	2	175282	Lockplate, pump to block	3	28		
175805	Cap, by-pass spring	1	3		LUBRICATING OIL PUMP				
S-107	Capscrew, cover to body (5/16"-18 x 3/4")	2	4		Front Sump Pan				
S-155-A	Capscrew, cover to body (5/16"-18 x 2-1/2")	2	5		Same as rear sump except:				
S-109	Capscrew, regulator (3/8"-16 x 7/8")	1	6	ADD:					
AR-60092	Cover and bushing (181165)	1	7	AR-60086	Pump, lubricating oil	1			
68586	Bushing	1	8	AR-60486	Tube, suction	1	29		
178283	Gasket, cover	1	9	S-117	Capscrew	2	30		
187012	Gear, idler drive	1	10	109319	Lockplate, tube to block	2	27		
AR-60090	Gear, idler (187013)	1	11	OMIT:					
68586	Bushing	2	12	175795	Tube, by-pass	1	20		
184044	Gear, main drive	1	13						
109319	Lockplate, regulator	1	14						
551117	Lockplate, cover to body	2	15						
183014	Plunger, pressure regulator	1	16						
178284	Shaft, drive	1	17						
190138	Shaft, idler	1	18						
551079	Spring, regulator	1	19						
175795	Tube, by-pass	1	20						
126304	Yoke, pressure regulator	1	21						
AR-60495	Tube, suction assembly	1	22						

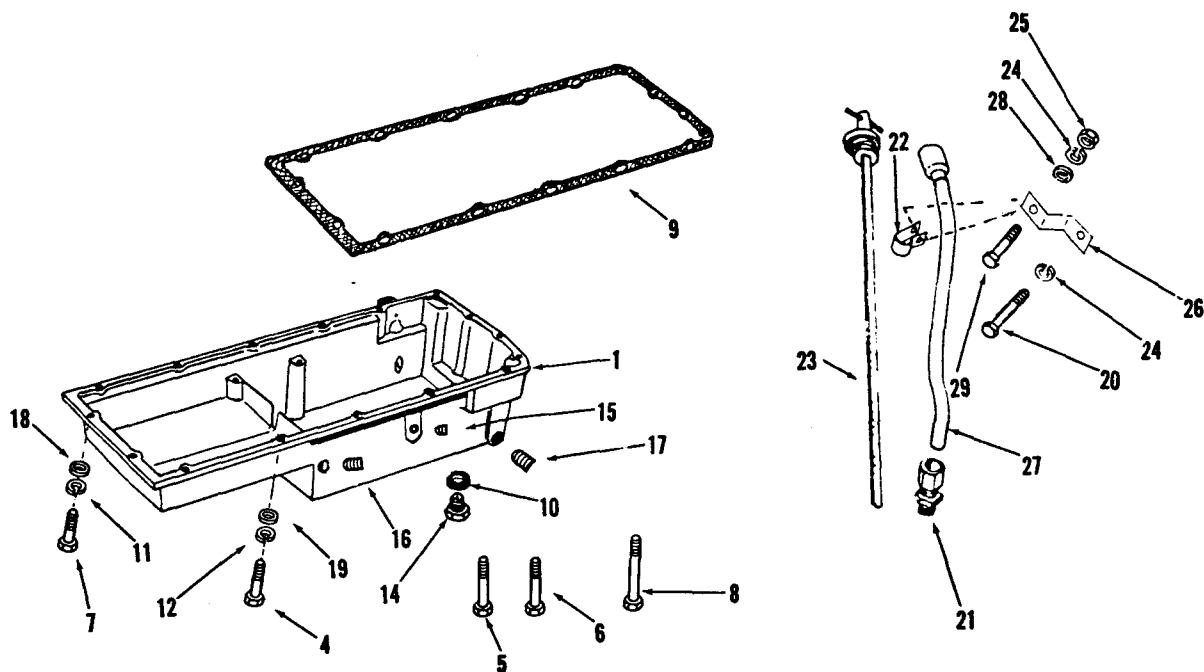
PARTS INDENTED ARE INCLUDED IN THE PART UNDER WHICH THEY ARE INDENTED





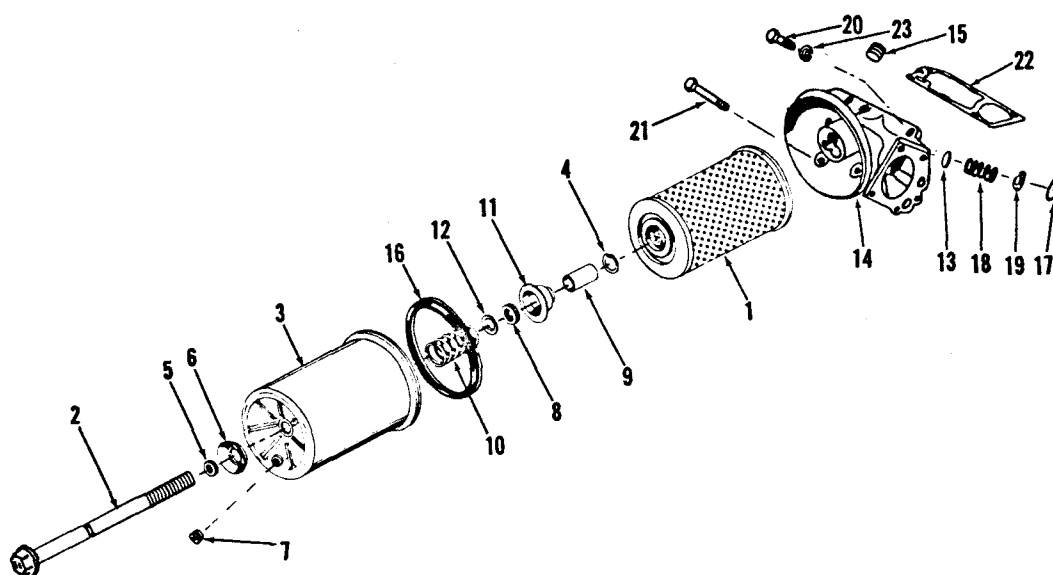
ENGINE APPLICATION		AUTOMOTIVE		B - OFF-HIGHWAY		C - CONSTRUCTION & INDUSTRIAL		X P - INDUSTRIAL POWER	
PART NUMBER	PART NAME	NO. REQ'D.	REF. NO.	PART NUMBER	PART NAME	NO. REQ'D.	REF. NO.		
	LUBRICATING OIL PUMP				MOUNTING PARTS				
AR-60108	Pump, lubricating oil	1		S-103-D	Capscrew, pump to block	2	30		
AR-60105	Body (190141)	1	1	S-112	Capscrew, pump to block	1	31		
68586	Bushing	2	2	S-103-D	Capscrew, suction tube	2	30		
BM-92138	Body, scavenger (178276)	1	3	S-112	Capscrew, suction tube	4	31		
68586	Bushing	2	2	S-117	Capscrew, suction tube	3	32		
S-109	Capscrew, regulator	1	4	164916	Gasket, suction tube to pump	2	33		
S-155-A	Capscrew, cover to body	2	5	175282	Lockplate, suction tube to pump	9	34		
S-138-C	Capscrew, cover	2	6						
S-115	Capscrew, cover	1	7						
178281	Cover, pump	1	8						
70760	Dowel	1	9						
551516	Dowel	1							
178283	Gasket, pump	1	10						
178282	Gasket, cover	1	11						
187012	Gear	3	12						
184044	Gear, drive	1	13						
BM-96834	Gear, idler (179065)	1	14						
68586	Bushing	2	2						
109319	Lockplate	1	15						
117559	Lockplate	2	16						
68908-A	Lockplate	1	17						
175805	Plug, by-pass valve	1	18						
S-965-E	Plug, pipe	1	19						
183014	Plunger, regulator	1	20						
190145	Shaft, scavenger pump drive	1	21						
178286	Shaft, idler	1	22						
178284	Shaft, drive	1	23						
551079	Spring, by-pass valve	1	24						
175795	Tube, by-pass	1	25						
126304	Yoke, cap retaining	1	26						
BM-94498	Tube, oil suction	1	27						
BM-99803	Tube, scavenger suction	1	28						
BM-91498	Tube, aerator	1	29						

PARTS INDENTED ARE INCLUDED IN THE PART UNDER WHICH THEY ARE INDENTED



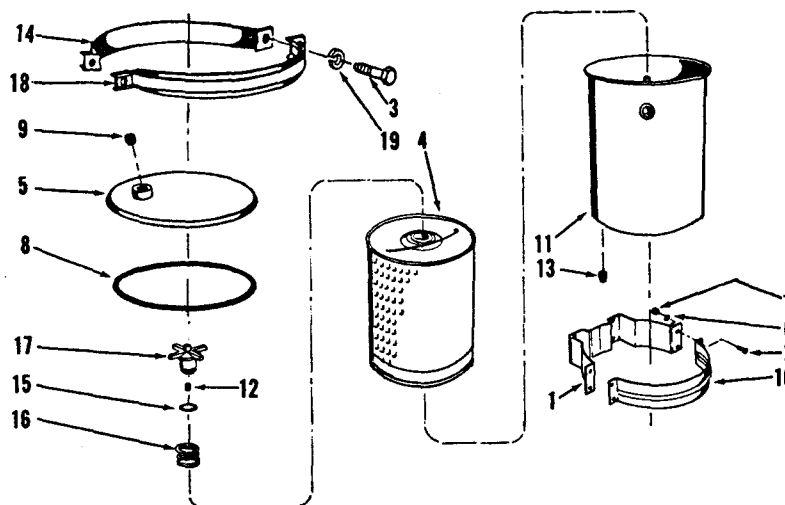
ENGINE APPLICATION		AUTOMOTIVE		B - OFF-HIGHWAY		C - CONSTRUCTION & INDUSTRIAL		X P - INDUSTRIAL POWER	
PART NUMBER	PART NAME	NO. REQ'D.	REF. NO.	PART NUMBER	PART NAME	NO. REQ'D.	REF. NO.		
	<b>OIL PAN</b>				<b>DIPSTICK AND TUBE</b>				
	<b>C Application</b>			S-188-C	Capscrew (1/4"-20 x 1/2")	1	29		
197411				108707	Capscrew (3/8"-16 x 1 1/2")	1	20		
185556	Pan, oil	1	1	163759	Connector	1	21		
185557	Baffle, oil pan	1	2	200064	Clamp	1	22		
S-110	Capscrew, baffle	4	3	<del>106000</del>	Dipstick, oil level	1	23		
S-103-D	Capscrew (3/8"-16 x 1-1/4")	8	4	S-600	Lockwasher (1/4")	1	24		
S-199-A	Capscrew (3/8"-16 x 4")	2	5	S-223	Nut	1	25		
S-124-C	Capscrew (5/16"-18 x 4")	2	6	172036	Support, oil gauge tube	1	26		
S-119	Capscrew (5/16"-18 x 1-1/4")	2	7	171634	Tube, dipstick	1	27		
550389	Capscrew (5/16"-18 x 5-7/8")	2	8	S-602	Washer, plain	1	28		
175727	Gasket, oil pan	1	9	S-631	Washer, plain (9/32")	1			
163087	Gasket, oil drain	1	10						
S-605	Lockwasher (5/16")	6	11						
S-604	Lockwasher (3/8")	10	12						
117559	Lockplate, baffle	4	13						
553015	Plug, oil drain	1	14						
S-911-B	Plug, pipe	1	15						
S-908	Plug, pipe	1	16						
S-915-A	Plug, pipe	1	17						
S-602	Washer, plain (13/32")	10	18						
S-626	Washer, plain (11/32")	6	19						

PARTS INDENTED ARE INCLUDED IN THE PART UNDER WHICH THEY ARE INDENTED



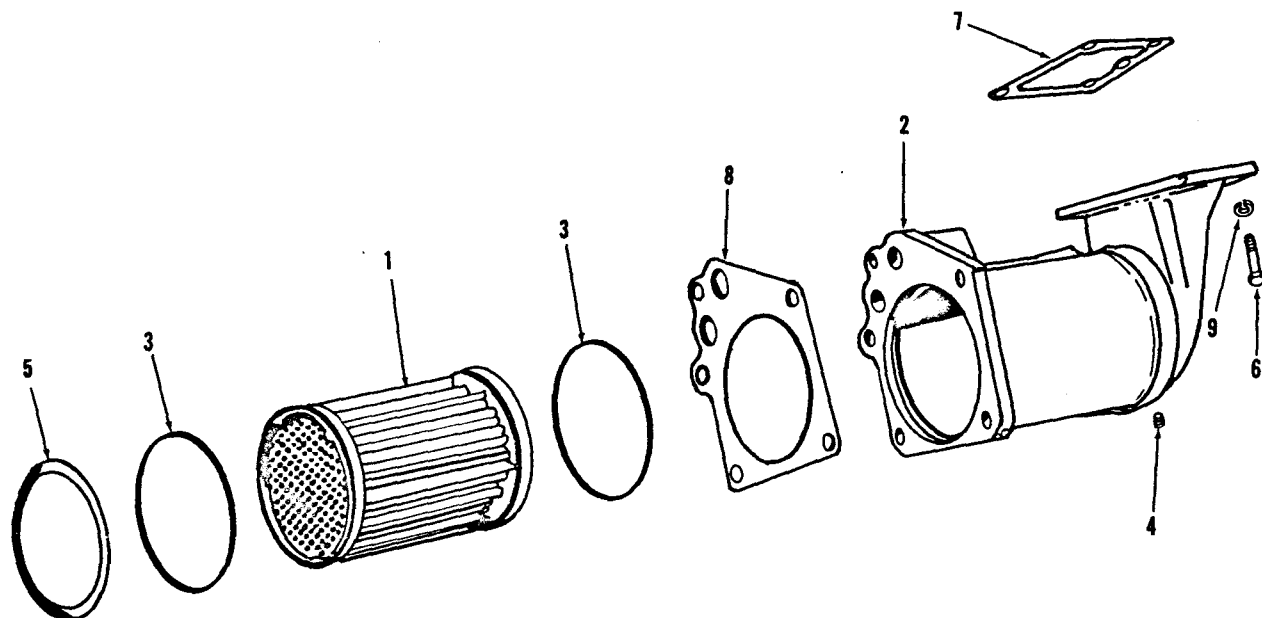
ENGINE APPLICATION		AUTOMOTIVE		B - OFF-HIGHWAY		C - CONSTRUCTION & INDUSTRIAL		P - INDUSTRIAL POWER	
			X				X		X
PART NUMBER	PART NAME	NO. REQ'D.	REF. NO.	PART NUMBER	PART NAME	NO. REQ'D.	REF. NO.		
	LUBRICATING OIL FILTER				MOUNTING PARTS				
AR-60253	Filter, lubricating oil	1		108707	Capscrew (3/8''-16 x 1 1/2'')	5	20		
LF-613	Cartridge	1	1	S-126	Capscrew (3/8''-16 x 2 1/2'')	2	21		
551680	Shell assembly, filter	1		181728	Gasket	1	22		
551690	Bolt, center	1	2	S-604	Lockwasher	7	23		
551681	Can, filter	1	3						
551688	Circlip	1	4						
551158	Gasket, bolt	1	5						
551682	Plate	1	6						
553364	Plug, pipe	1	7						
551685	Seal, bolt	1	8						
551687	Spacer	1	9						
551683	Spring, cartridge	1	10						
551686	Support, cartridge	1	11						
551684	Washer, bolt seal	1	12						
200819	Disc, by-pass	1	13						
175623	Head, filter	1	14						
S-908	Plug, pipe	1	15						
193302	Ring, sealing, head	1	16						
156676	Ring, snap disc	1	17						
188476	Spring, by-pass	1	18						
S-689	Washer, disc	1	19						

PARTS INDENTED ARE INCLUDED IN THE PART UNDER WHICH THEY ARE INDENTED



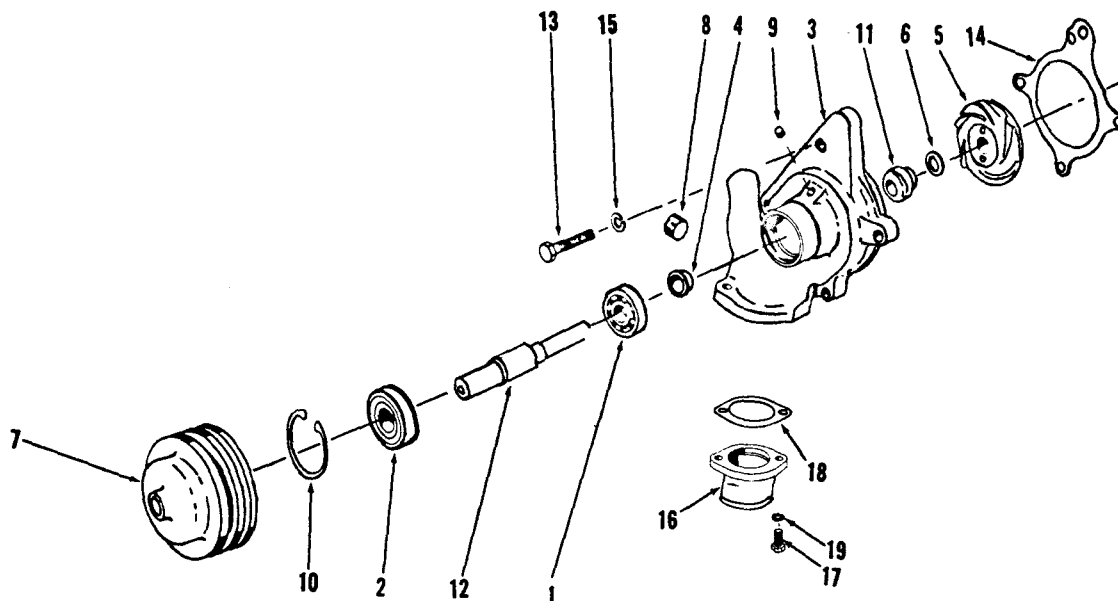
ENGINE APPLICATION		AUTOMOTIVE		B - OFF-HIGHWAY		C - CONSTRUCTION & INDUSTRIAL		X	P - INDUSTRIAL POWER	
PART NUMBER	PART NAME	NO. REQ'D.	REF. NO.	PART NUMBER	PART NAME	NO. REQ'D.	REF. NO.			
	LUBRICATING OIL BY-PASS FILTER									
159707	Filter, lubricating oil by-pass	1								
145664	Bracket, filter	2	1							
70188	Capscrew, coupling half	8	2							
70449	Capscrew	2	3							
LF-500	Cartridge	1	4							
150038	Coupling, half with nuts	1	14							
150039	Coupling half, cover	1	18							
159667	Cover	1	5							
70189	Lockwasher, bracket	8	6							
70194	Lockwasher, coupling half	2	19							
70299	Nut, mounting bracket	8	7							
164159	"O" ring, cover	1	8							
S-908	Plug, cover	1	9							
145665	Strap, mounting	2	10							
252056	Shell, filter	1	11							
157151	Decal, filter	1								
131911	Orifice, plug (no. 6)	1	12							
S-908	Plug, drain	1	13							
252138	Support, upper	1								
116029	"O" ring, support	1	15							
150037	Spring, hold down	1	16							
252055	Support, upper	1	17							

PARTS INDENTED ARE INCLUDED IN THE PART UNDER WHICH THEY ARE INDENTED



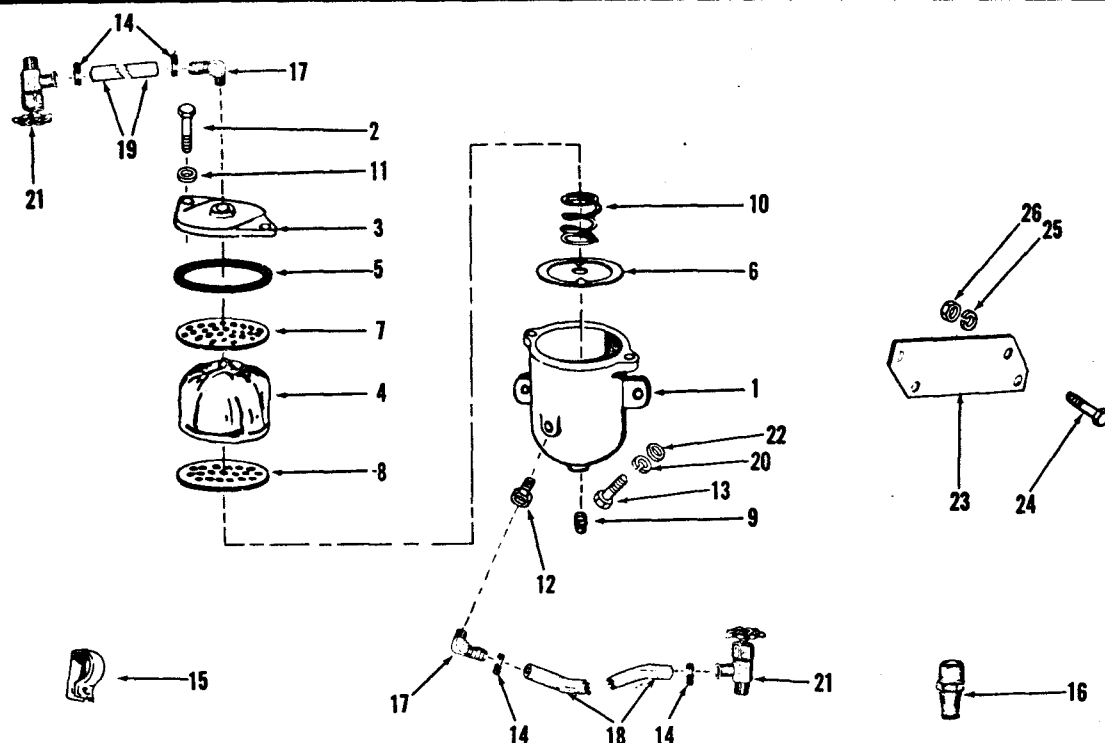
ENGINE APPLICATION		AUTOMOTIVE		X	B - OFF-HIGHWAY		C - CONSTRUCTION & INDUSTRIAL		X	P - INDUSTRIAL POWER		X
PART NUMBER	PART NAME	NO. REQ'D.	REF. NO.	PART NUMBER	PART NAME	NO. REQ'D.	REF. NO.					
	<b>LUBRICATING OIL COOLER</b>											
BM-91604	Cooler, lubricating oil	1										
110848	Element	1	1									
166401	Housing	1	2									
148293	"O" ring	2	3									
S-910-B	Plug, pipe	1	4									
110827	Retainer, element	1	5									
	<b>MOUNTING PARTS</b>											
S-103-D	Capscrew, mounting	9	6									
165153	Gasket, housing to block	1	7									
166407	Gasket, cooler to filter	1	8									
S-604	Lockwasher	9	9									

PARTS INDENTED ARE INCLUDED IN THE PART UNDER WHICH THEY ARE INDENTED



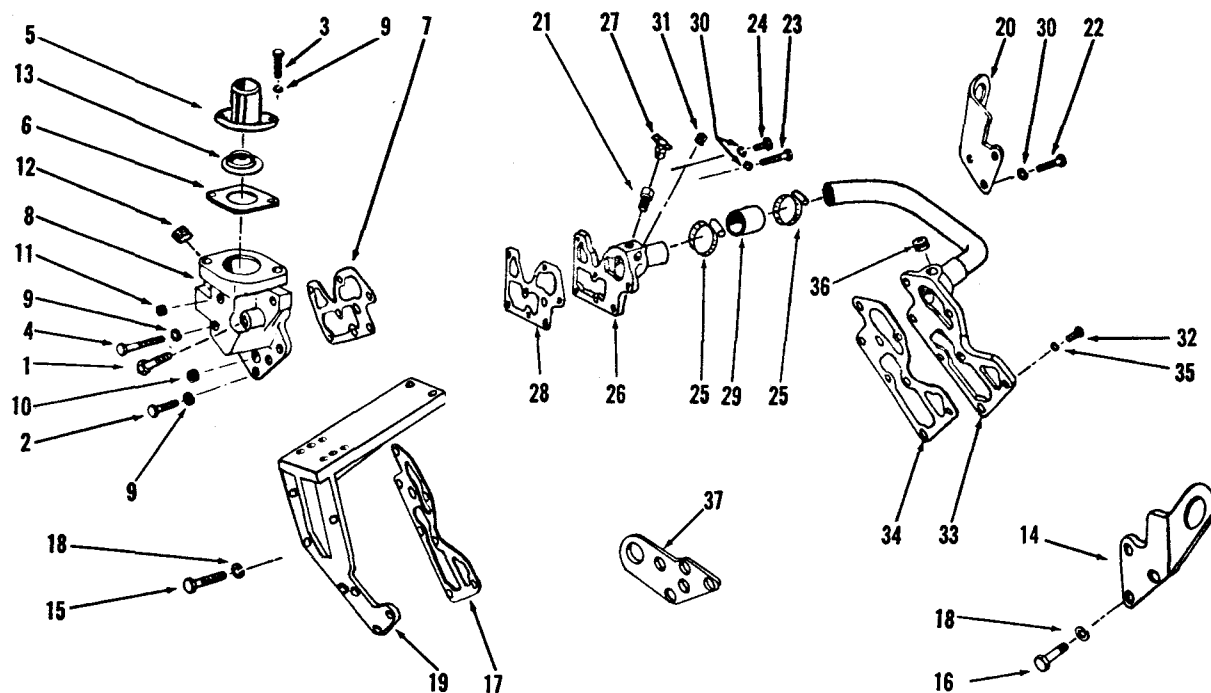
ENGINE APPLICATION		AUTOMOTIVE		B - OFF-HIGHWAY		C - CONSTRUCTION & INDUSTRIAL		P - INDUSTRIAL POWER	
		X				X		X	
PART NUMBER	PART NAME	NO. REQ'D.	REF. NO.	PART NUMBER	PART NAME	NO. REQ'D.	REF. NO.		
<b>WATER PUMP</b>				<b>WATER PUMP REPAIR KIT</b>					
<del>AR-61240</del>	Pump, water	1		AR-60698	Kit, water pump repair	1			
<del>AR-60679</del>	Bearing, ball	1	1	552335	Bearing, ball	1	1		
552335	Bearing, ball	1	2	552377	Bearing, ball	1	2		
<del>552377</del>	Body, water pump	1	3	BM-96156	Impeller, water pump	1	5		
<del>552332</del>	Flinger, water pump	1	4	170895	Seal, water pump	1	11		
107776	Impeller, water pump	1	5	169042	Gasket, water pump mounting	1	14		
BM-96156	Seal, seat	1	6	107776	Flinger, water pump	1	4		
200509	Pulley, water pump	1	7						
<del>170783</del>	Plug, pipe (3/4")	1	8		<b>WATER INLET CONNECTION</b>				
S-995	Plug, pipe	1							
S-915-A	Plug, pipe (1/8")	1	9	68270	Connection, water	1	16		
S-911-B	Ring, retaining	1	10	S-112	Capscrew, connection	2	17		
160586	Seal, water pump	1	11	9221	Gasket, connection	1	18		
170895	Shaft, water pump	1	12	S-604	Lockwasher	2	19		
<del>552334</del>									
<b>MOUNTING PARTS</b>									
108707	Capscrew, water pump to block	4	13						
169042	Gasket, water pump to block	1	14						
S-604	Lockwasher (3/8")	4	15						

PARTS INDENTED ARE INCLUDED IN THE PART UNDER WHICH THEY ARE INDENTED



ENGINE APPLICATION				C - CONSTRUCTION & INDUSTRIAL			
AUTOMOTIVE		X		B - OFF-HIGHWAY		P - INDUSTRIAL POWER	
PART NUMBER	PART NAME	NO. REQ'D.	REF. NO.	PART NUMBER	PART NAME	NO. REQ'D.	REF. NO.
<b>CORROSION RESISTOR</b>				<b>MOUNTING PARTS</b>			
176945	Corrosion resistor assembly	1		S-921-D	Bushing, pipe, inlet (3/8")	1	12
171638	Body	1	1	S-102	Capscrew (5/16"-18 x 1")	4	13
70223	Bolt, cover to body (5/16"-18 x 1 1/4")	2	2	179904	Clamp, hose	4	14
171639	Cover	1	3	550692	Clip, hose	2	15
171645	Element (Use without permanent anti-freeze)	1	4	179902	Connection	1	16
171644	Gasket	1	5	650390	Decal	1	
171642	Plate, sump	1	6	179903	Elbow	1	17
171640	Plate, upper	1	7	179913	Hose	1	18
171641	Plate, lower	1	8	179924	Hose	1	19
139090	Plug, drain (1/4"N.P.T.F.)	1	9	S-605	Lockwasher (5/16")	2	20
171643	Spring	1	10	179901	Valve, shut-off	2	21
70233	Washer, plain (11/32")	2	11	S-626	Washer, plain (11/32")	2	22
				188903	Bracket	1	23
				S-106-A	Capscrew (5/16"-18 x 1 3/4")	2	24
				S-605	Lockwasher (5/16")	2	25
				S-221	Nut (5/16")	2	26

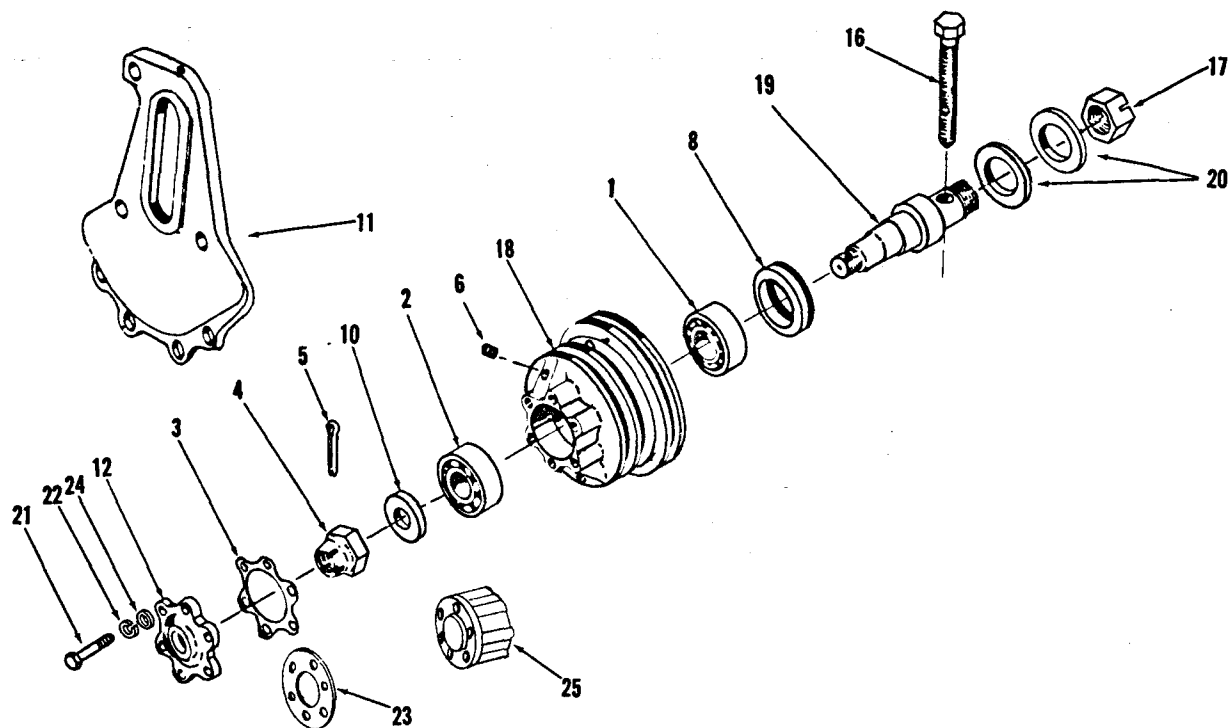
PARTS INDENTED ARE INCLUDED IN THE PART UNDER WHICH THEY ARE INDENTED



ENGINE APPLICATION		AUTOMOTIVE		X	B - OFF-HIGHWAY		C - CONSTRUCTION & INDUSTRIAL		X	P - INDUSTRIAL POWER		X
PART NUMBER	PART NAME	NO. REQ'D.	REF. NO.		PART NUMBER	PART NAME	NO. REQ'D.	REF. NO.				
	<b>THERMOSTAT HOUSING</b>					<b>P Application</b>						
	<b>RIGHT BANK FRONT</b>				S-103-D	Capscrew (3/8''-16 x 1 1/4'')	7	15				
	<b>Auto, C Application</b>				157290	Gasket	1	7				
					S-604	Lockwasher (3/8'')	7	18				
S-102-D	Capscrew, housing (3/8''-16 x 3'')	1	1		172017	Support, alternator bracket	1	19				
S-103-D	Capscrew, housing	5	2									
S-112	Capscrew, connection	2	3			<b>RIGHT BANK REAR</b>						
S-199-A	Capscrew, housing (3/8''-16 x 4'')	1	4			<b>All Applications</b>						
172031	Connection, water outlet	1	5									
140329	Gasket, connection	1	6	168919	Bracket, lifting		1	20				
157290	Gasket, housing to head	1	7	S-929-B	Bushing		1	21				
172032	Housing, thermostat	1	8	S-103-D	Capscrew (3/8''-16 x 1 1/4'')		4	22				
S-604	Lockwasher (3/8'')	7	9	S-104	Capscrew (3/8''-16 x 2 1/4'')		1	23				
S-908	Plug, pipe (3/8'')	1	10	S-112	Capscrew (3/8''-16 x 1'')		9	24				
S-911-B	Plug, pipe (1/8'')	1	11	550547	Clamp, hose		2	25				
S-915-A	Plug, pipe (1/2'')	2	12	BM-96631	Crossover, water		1	26				
163981	Thermostat	1	13	S-962-E	Drain cock		1	27				
	<b>P Application</b>			157290	Gasket, crossover		2	28				
	Same as above except:			178804	Hose		1	29				
				S-604	Lockwasher (3/8'')		14	30				
				S-908	Plug, pipe (3/8'')		2	31				
<b>ADD:</b>					<b>LEFT BANK REAR</b>							
					<b>Auto, C Applications</b>							
160216	Connection, water outlet	1	5	S-112	Capscrew, crossover (3/8''-16 x 1'')		7	32				
650864	Bracket, lifting	1	37	BM-96630	Crossover, water		1	33				
				157290	Gasket, crossover		1	34				
<b>OMIT:</b>				S-604	Lockwasher (3/8'')		7	35				
172031	Connection, water outlet	1	5	S-908	Plug, pipe (3/8'')		1	36				
	<b>LEFT BANK FRONT</b>				<b>P Applications</b>							
	<b>Auto, C Application</b>				Same as above except:							
				<b>ADD:</b>								
168919	Bracket, lifting	1	14	650864	Bracket, lifting (L.B.)		1	37				
S-103-D	Capscrew, plate to head	4	15	S-103-D	Capscrew, lifting bracket		4	32				
108707	Capscrew, bracket	3	16									
157290	Gasket, plate to head	1	17	<b>OMIT:</b>								
S-604	Lockwasher (3/8'')	4	18									
172017	Support, alternator bracket	1	19	S-112	Capscrew (3/8''-16 x 1'')		4	32				

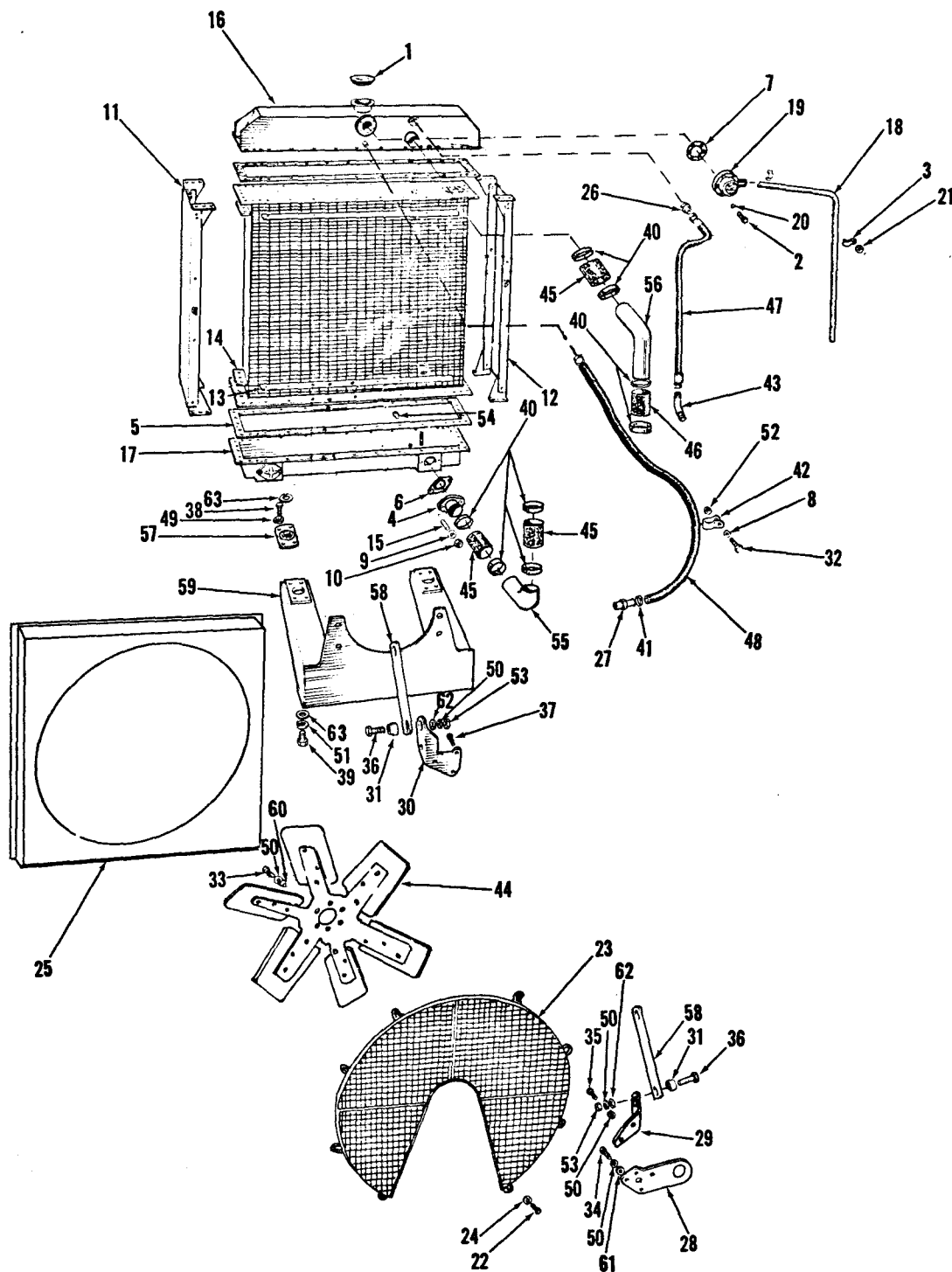
PARTS INDENTED ARE INCLUDED IN THE PART UNDER WHICH THEY ARE INDENTED





ENGINE APPLICATION		AUTOMOTIVE		X	B - OFF-HIGHWAY		C - CONSTRUCTION & INDUSTRIAL		X	P - INDUSTRIAL POWER		X
PART NUMBER	PART NAME	NO. REQ'D.	REF. NO.	PART NUMBER	PART NAME	NO. REQ'D.	REF. NO.					
S-117 S-604	STANDARD FAN MOUNT				MOUNTING PARTS							
	Capscrew, fan to crankshaft	6		178685	Belt	2						
	Lockwasher, fan to crankshaft	6		108707	Capscrew, fan mounting	6	21					
				S-604	Lockwasher	6	22					
				119221	Spacer, fan	1	23					
				S-602	Washer, plain	15	24					
	HIGH FAN MOUNT											
	Auto, C Application				P Application							
	BM-94480	Hub, fan	1		Same as above except:							
	143116	Bearing, tapered roller	1	1								
116759	Bearing, tapered roller	1	2	ADD:								
143108	Gasket	1	3									
146650	Locknut, slotted	1	4	S-141	Capscrew, fan mounting	6	21					
67532	Locknut, Marsden	1	17	152237	Pilot, fan	1	12					
S-510	Pin, cotter	1	5	67012-1	Spacer, fan	1	25					
173223	Pulley, fan hub	1	18	70540	Spacer, fan	1						
S-911-B	Plug, pipe	2	6									
106276	Seal, oil	1	8	OMIT:								
146647	Shaft, fan hub	1	19									
146651	Washer, clamp	1	10	108707	Capscrew	6	21					
67526	Washer, clamp	2	20	147209	Pilot fan	1	12					
182697	Bracket, camshaft cover and fan	1	11									
147209	Pilot, fan	1	12									
182706	Screw, adjusting	1	16									

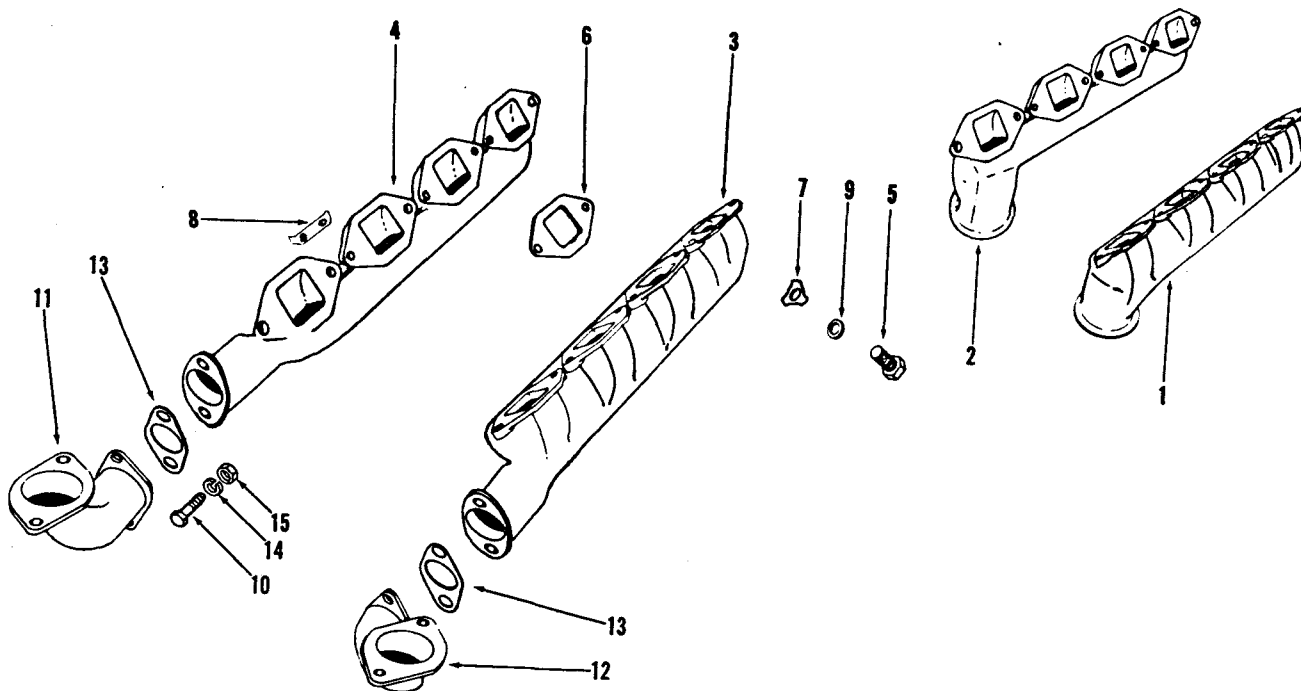
PARTS INDENTED ARE INCLUDED IN THE PART UNDER WHICH THEY ARE INDENTED



RADIATOR AND MOUNTING PARTS

ENGINE APPLICATION		AUTOMOTIVE		B - OFF-HIGHWAY		C - CONSTRUCTION & INDUSTRIAL		P - INDUSTRIAL POWER		X	
PART NUMBER	PART NAME	NO. REQ'D.	REF. NO.	PART NUMBER	PART NAME	NO. REQ'D.	REF. NO.				
	<b>RADIATOR</b>				<b>MOUNTING PARTS</b>						
	<b>P Application Only</b>			116935	Adapter, thermostat to radiator	1	26				
				650418	Adapter, radiator to water pump	1	27				
AR-73455	Radiator and shroud	1		650864	Bracket, engine lifting	1	28				
650399	Radiator assembly	1		650866	Bracket, radiator support	1	29				
650980	Cap, radiator filler	1	1	650255	Bracket, engine lift and support	1	30				
132049	Capscrew, relief valve	6	2	650429	Bush, radiator stay	4	31				
650987	Clamp, overflow tube	2	3	S-114	Capscrew, clip	1	32				
650981	Connection	1	4	S-141	Capscrew, fan	6	33				
650996	Gasket, core to plate	2	5	S-120	Capscrew, rod support to left bracket	2	34				
650982	Gasket, connection	2	6								
650985	Gasket, relief valve	2	7	108707	Capscrew, lifting bracket	2	35				
650988	Lockwasher (1/4" shakeproof)	2	8	S-165	Capscrew, radiator stay mounting	4	36				
650983	Lockwasher (3/8" shakeproof)	4	9	S-103-D	Capscrew, lifting bracket	3	37				
S-205	Nut, water connection	4	10	S-115-C	Capscrew, vibration mounting	8	38				
650991	Panel, side (L.H.)	1	11	S-144	Capscrew, radiator base mounting	2	39				
650992	Panel, side (R.H.)	1	12	43828-D	Clamp, hose radiator to pump	8	40				
650994	Plate, stiffening (long)	4	13	43828-A	Clamp	2	41				
650995	Plate, stiffening (short)	4	14	67949	Clip, hose	2	42				
70768	Stud, water connection	4	15	116936	Elbow, thermostat to radiator	1	43				
650989	Tank, top subassembly	1	16	<del>651069</del> 651069	Fan	1	44				
650990	Tank, bottom subassembly	1	17	69972	Hose, radiator to water pump	3	45				
650986	Tube, overflow	1	18	110980	Hose, water pump	1	46				
650984	Valve, relief	1	19	AS0502660SS	Hose, thermostat to radiator	1	47				
650993	Valve, relief inlet pipe	1		138381	Hose, radiator to water pump	1	48				
120684	Washer, relief valve	6	20	S-600	Lockwasher (1/4")	9	49				
S-600	Lockwasher (1/4")	2	21	S-604	Lockwasher (3/8")	4	50				
S-115-C	Capscrew	8		S-603	Lockwasher (5/8")	2	51				
S-167-A	Capscrew, fan guard mounting	8	22	S-270	Nut, clip	1	52				
650406	Guard, fan	1	23	S-205	Nut, radiator stay mounting	4	53				
S-600	Lockwasher, fan guard	8	24	S-908	Plug, radiator drain	1	54				
650404	Shroud, fan	1	25	650384	Pipe, radiator to water pump	1	55				
S-691	Washer, toothlock	8		650385	Pipe, thermostat housing to head	1	56				
				650387	Rubber, radiator mounting	2	57				
				650434	Stay, radiator	2	58				
				650368	Support, front engine	1	59				
				S-602	Washer, plain, fan	6	60				
				146651	Washer, plain, lifting bracket	3	61				
				146161	Washer, plain	8	62				
				S-658	Washer, plain, radiator base mounting	4	63				

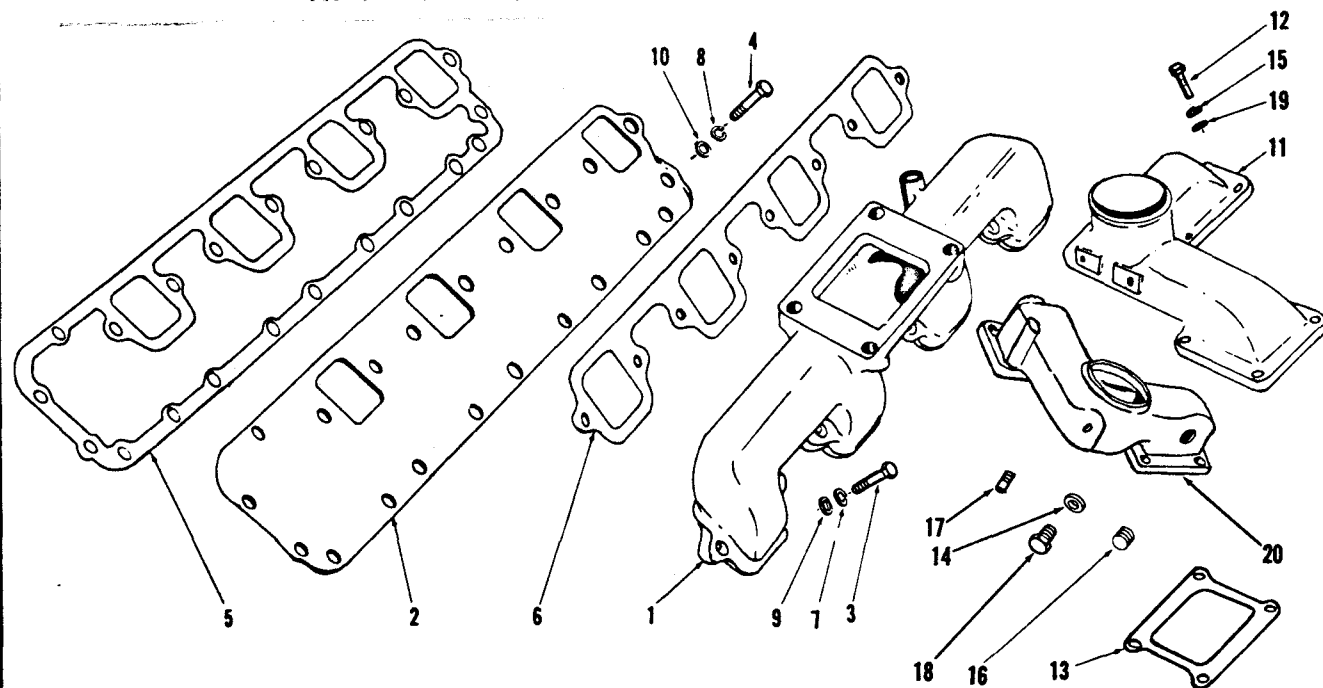
PARTS INDENTED ARE INCLUDED IN THE PART UNDER WHICH THEY ARE INDENTED



ENGINE APPLICATION    AUTOMOTIVE    X    B - OFF-HIGHWAY    C - CONSTRUCTION & INDUSTRIAL    X    P - INDUSTRIAL POWER    X

PART NUMBER	PART NAME	NO. REQ'D.	REF. NO.	PART NUMBER	PART NAME	NO. REQ'D.	REF. NO.
<b>EXHAUST MANIFOLD</b>							
161488	Manifold, exhaust L.B. (Auto)	1	1				
161489	Manifold, exhaust R.B. (Auto)	1	2				
173139	Manifold, exhaust R.B. (C and P)	1	3				
173140	Manifold, exhaust L.B. (C and P)	1	4				
<b>MOUNTING PARTS</b>							
<b>Auto, C Application</b>							
S-172-B	Capscrew, manifold	16	5				
168003	Gasket, manifold	8	6				
550720	Lockplate	4	7				
551108	Lockplate	6	8				
S-602	Washer	4	9				
<b>P Application</b>							
Same as above except:							
ADD:							
108707	Capscrew (3/8"-16 x 1-1/2")	4	10				
650133	Elbow, exhaust (L.B.)	1	11				
650134	Elbow, exhaust (R.B.)	1	12				
168004	Gasket, elbow to manifold	2	13				
S-604	Lockwasher (3/8")	4	14				
S-254	Nut	4	15				

PARTS INDENTED ARE INCLUDED IN THE PART UNDER WHICH THEY ARE INDENTED



ENGINE APPLICATION		AUTOMOTIVE		X		B - OFF-HIGHWAY		C - CONSTRUCTION & INDUSTRIAL		X		P - INDUSTRIAL POWER		X	
PART NUMBER		PART NAME		NO. REQ'D.		REF. NO.		PART NUMBER		PART NAME		NO. REQ'D.		REF. NO.	
		<b>AIR INTAKE MANIFOLD</b>								<b>CONNECTION, AIR CROSSOVER</b>					
168067	Manifold, air intake	2	1	168076	Connection, air crossover	1	11								
159267	Plate, push rod cover	2	2												
		<b>MOUNTING PARTS</b>								<b>MOUNTING PARTS</b>					
		<b>Auto Application</b>								<b>Auto Application</b>					
S-102	Capscrew, plate to block (Auto,C)	2													
S-174-B	Capscrew, manifold to plate	16	3	S-103-D	Capscrew, connection	8	12								
S-110	Capscrew, plate to block	24	4	168069	Gasket, connection	2	13								
157015	Gasket, plate	2	5	66292	Gasket, plug	2	14								
156996	Gasket, intake manifold	2	6	S-604	Lockwasher	8	15								
S-604	Lockwasher, manifold	16	7	S-911-B	Plug, pipe	1	16								
S-605	Lockwasher, plate	26	8	S-932-B	Nipple	1	17								
108976	Washer, plain, manifold	16	9	66030	Plug	2	18								
S-626	Washer, plain, manifold	26	10	S-602	Washer, plain	8	19								
										<b>C, P Application</b>					
										Same as above except:					

PARTS INDENTED ARE INCLUDED IN THE PART UNDER WHICH THEY ARE INDENTED

P/C

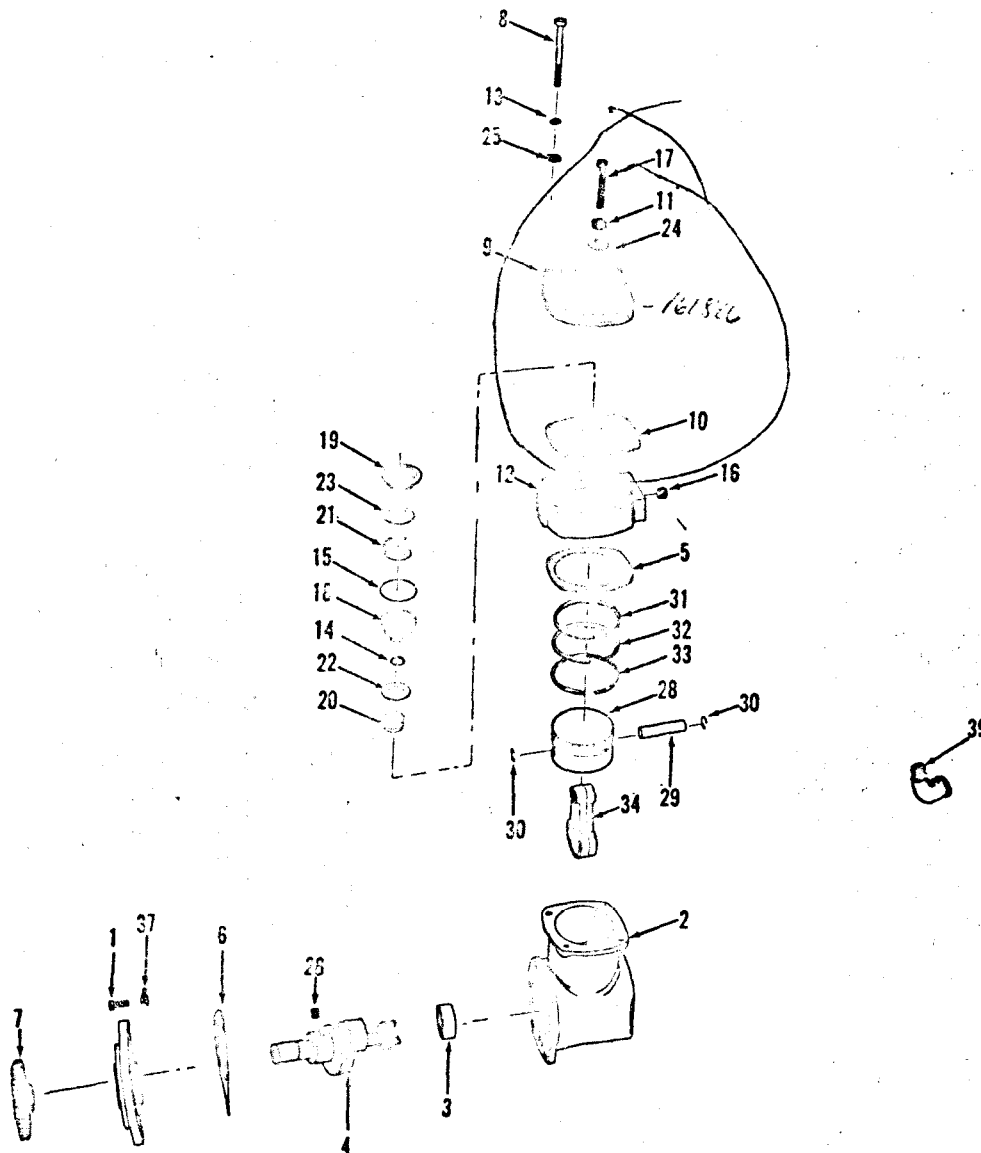
P/C

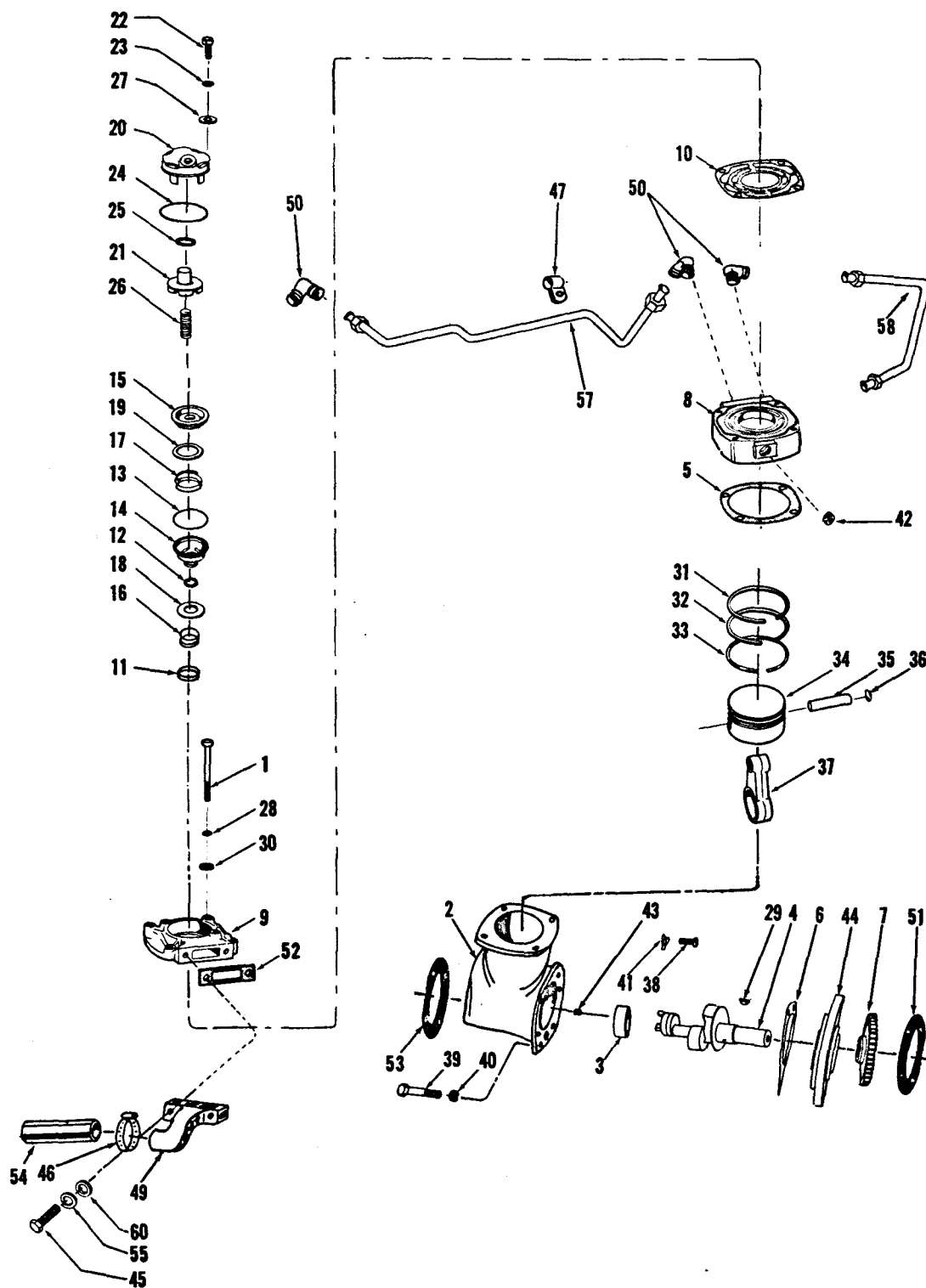
ISSUED 5-73

FIG. 2 VACUUM PUMPS

REVISED

(3)





CUMMINS COMPACT AIR COMPRESSOR - VAC. Pump

P/G

GROUP 12.03

PAGE 5

P/G

ISSUED 5-70

VACUUM PUMPS

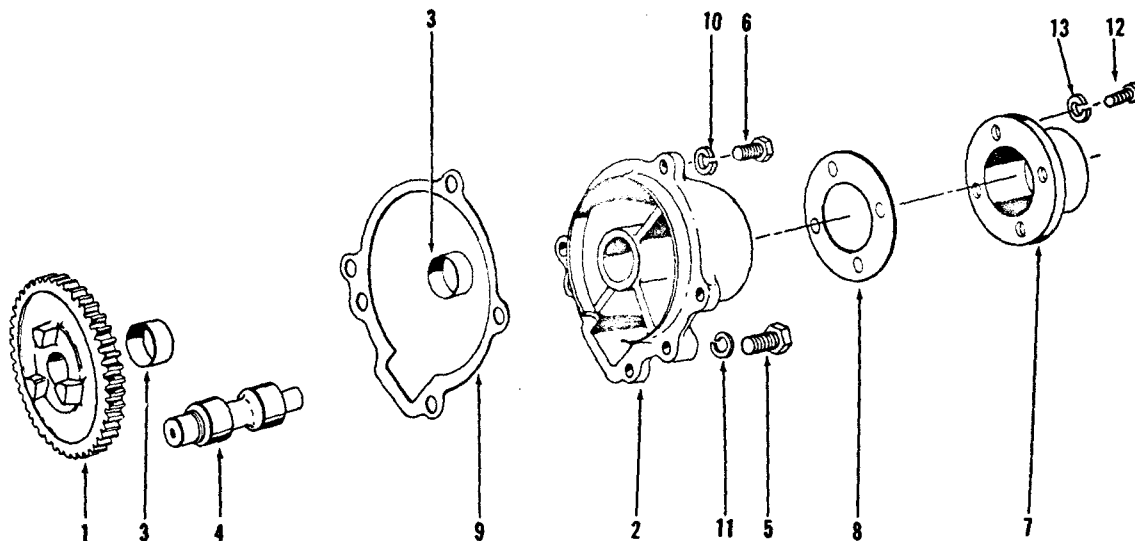
REVISED

PART NUMBER	PART NAME	NO. REQ.	FIG. NO.	REF. NO.	PART NUMBER	PART NAME	NO. REQ.	FIG. NO.	REF. NO.
<b>Group E (Cont'd.)</b>					<b>Group F (Cont'd.)</b>				
AR-03163	Head,	1			110059	Ring, snap	2	2	30
100037	Cover, head 141846	1	2	9	170023	Rod, connecting	1	2	34
104033	Gasket, cover	1	2	10	S-2203	Screw, nameplate	6		
179122	Head	1	2	12	S-623	Washer	4	2	25
100012	Nut, locking	1	2	11					
120005	"O" ring	1	2	14					
120005	"O" ring	1	2	15					
183423	Plate, wear	1							
100019	Screw, socket	1	2	17					
145013	Seat, intake valve	1	2	13					
144714	Seat, exhaust valve	1	2	13					
120010	Spring	1	2	20					
190334	Spring	1	2	21					
144043	Valve, intake	1	2	23					
127040	Valve, exhaust	1	2	22					
01623	Washer	1	2	24					
<b>Group F</b>									
AR-73659	Pump, vacuum	1							
105707	Capscrew	4	2	1					
104031	Capscrew, nylok	2							
170030	Crankshaft	1	2	4					
170027	Gasket	1	2	6					
170034	Gear, drive	1	2	7					
100095	Key, crankshaft	1							
170039	Lockplate	2							
S-005-E	Plug, pipe	1	2	17					
170029	Support	1	2	35					
S-002	Washer	2							
AR-03981	Crankcase, vacuum pump	1							
S-147-B	Capscrew	4	2	8					
170023	Crankcase	1	2	2					
154018	Gasket	1	2	5					
BM-03000	Head, vacuum pump	1							
161043	Cover, head	1	2	9					
154013	Gasket	1	2	10					
179122	Head	1	2	12					
100012	Nut, lock	1	2	11					
120005	"O" ring	1	2	14					
120005	"O" ring	1	2	15					
183423	Plate, wear	1							
100019	Screw, socket	1	2	17					
144714	Seat, exhaust valve	1	2	13					
145013	Seat, intake valve	1	2	13					
120010	Spring, exhaust valve	1	2	20					
190334	Spring, intake valve	1	2	21					
127040	Valve, exhaust	1	2	22					
144043	Valve, intake	1	2	23					
01623	Washer, copper	1	2	24					
S-005	Lockwasher	4	2	13					
136403	Nameplate	1							
100017	Nameplate	1							
110010	Pin, piston	1	2	23					
100430	Piston	1	2	23					
100010	Ring, top	1	2	31					
100010	Ring, compression	1	2	32					
100010	Ring, oil	1	2	33					



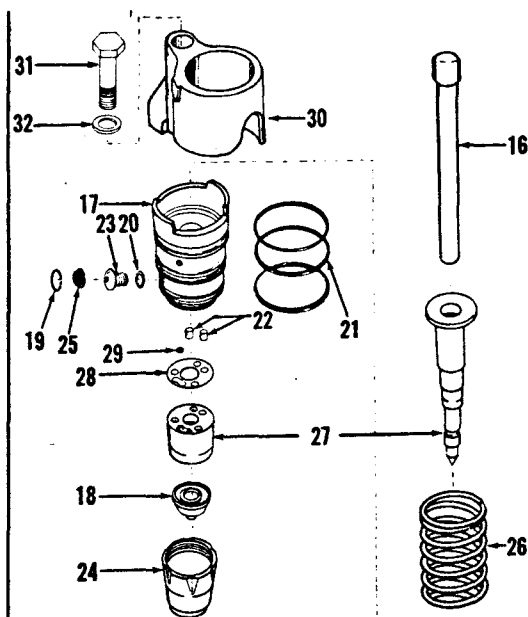
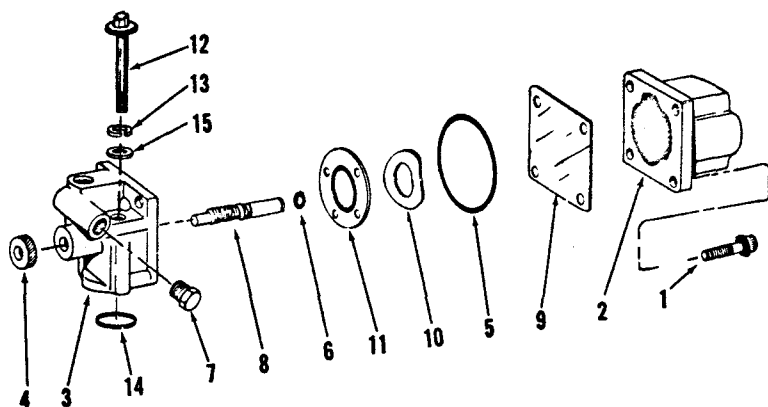
ENGINE APPLICATION		AUTOMOTIVE		X	B - OFF-HIGHWAY		C - CONSTRUCTION & INDUSTRIAL		P - INDUSTRIAL POWER	
PART NUMBER	PART NAME	NO. REQ'D.	REF. NO.		PART NUMBER	PART NAME	NO. REQ'D.	REF. NO.		
<b>AR-73659</b>	<b>AIR COMPRESSOR - VACU.</b>			<i>Pump</i>		<b>MOUNTING PARTS</b>				
<del>AR-73582</del>	Compressor, air	1			S-111	Capscrew, air connection	2	45		
S-155-A	Capscrew, head to crankcase	4	1		550788	Clamp, hose	2	46		
BM-98685	Crankcase, compressor (176025)	1	2		108722	Clamp, hose	1	47		
147610	Bushing, crankcase	1	3		S-1002-A	Connector, flexible hose	1	48		
176030	Crankshaft, compressor	1	4		<del>104410</del> 176030	Connection, air	1	49		
154018	Gasket, head to crankcase	1	5		S-1005-A	Elbow, flexible hose	3	50		
176027	Gasket, support	1	6		167993	Gasket, support	1	51		
187639	Gear, compressor drive	1	7		157911	Gasket, air connection	1	52		
AR-03926	Head assembly	1			200817	Gasket, fuel pump to compressor	1	53		
179122	Head, air compressor	1	8		177217	Hose	1	54		
153964	Cover, air compressor head	1	9		S-605	Lockwasher	2	55		
154996	Gasket	1	10		S-920	Pipe, nipple	1	56		
183429	Wearplate	1	11		186226	Tube, water inlet	1	57		
AR-73075	Intake and exhaust valve assembly	1			189999	Tube, water outlet	1	58		
128085	"O" ring	1	12		126876	Tee, pipe	1	59		
128086	"O" ring	1	13		S-626	Washer, plain	2	60		
144714	Seat, exhaust valve	1	14							
145028	Seat, intake valve	1	15							
128080	Spring, exhaust valve	1	16							
190334	Spring, intake valve	1	17							
127940	Valve, exhaust	1	18							
144948	Valve, intake	1	19							
AR-73076	Unloading valve assembly	1								
<del>153966</del>	Body, unloader valve 161846	1	20							
191037	Cap, unloader	1	21							
S-115	Capscrew	2	22							
S-605	Lockwasher	2	23							
128086	"O" ring	1	24							
127936	Seal, plunger	1	25							
150631	Spring, unloader valve	1	26							
109557	Washer	2	27							
S-605	Lockwasher, head to crankcase	4	28							
S-316	Key	1	29							
136403	Nameplate, serial number	1								
S-2267	Screw, nameplate	2								
S-626	Washer, plain	4	30							
AR-04130	Ring set, compressor (Std.)	1								
194810	Ring, compression	1	31							
187350	Ring, compression	1	32							
180810	Ring, oil	1	33							
BM-77410	Piston assembly (Std.)	1								
165430	Piston, air compressor	1	34							
119810	Pin, piston	1	35							
119859	Ring, snap	2	36							
176023	Rod, connecting	1	37							
S-112	Capscrew	4	38							
S-103-D	Capscrew	2	39							
S-604	Lockwasher	2	40							
550720	Lockplate	4	41							
S-915-A	Plug, pipe	1	42							
S-965-E	Plug, pipe	1	43							
650187	Support	1	44							
650792	Plug, pipe (Crankshaft)	1								

PARTS INDENTED ARE INCLUDED IN THE PART UNDER WHICH THEY ARE INDENTED



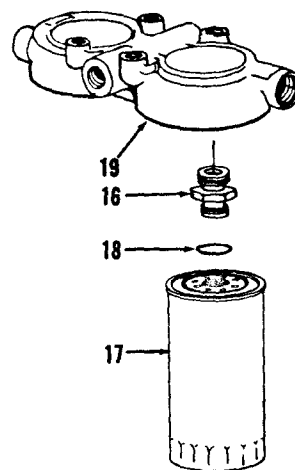
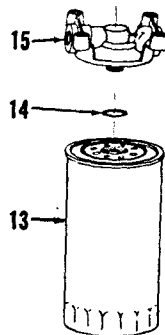
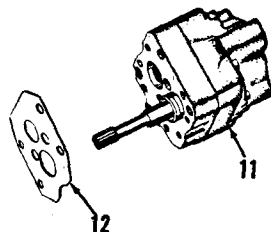
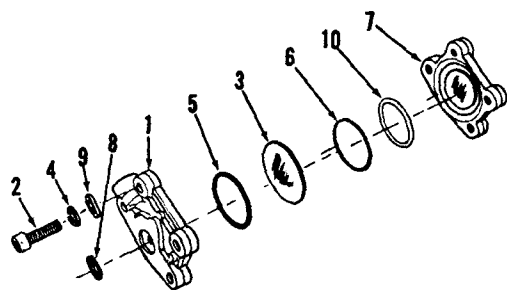
ENGINE APPLICATION		AUTOMOTIVE		B - OFF-HIGHWAY		C - CONSTRUCTION & INDUSTRIAL		P - INDUSTRIAL POWER	
						X		X	
PART NUMBER	PART NAME	NO. REQ'D.	REF. NO.	PART NUMBER	PART NAME	NO. REQ'D.	REF. NO.		
	FUEL PUMP DRIVE				MOUNTING PARTS				
BM-93760	Drive, fuel pump	1		S-105-A	Capscrew, drive	2	5		
177097	Gear, drive	1	1	S-105	Capscrew, drive	2	6		
BM-93759	Housing, drive (171635)	1	2	551160	Cover, drive shaft	1	7		
147610	Bushing, shaft	2	3	550123	Gasket, cover	1	8		
171636	Shaft, drive	1	4	153433	Gasket, support	1	9		
				S-604	Lockwasher, drive	2	10		
				S-610	Lockwasher, drive	2	11		
				S-1326	Screw, cover	4	12		
				S-607	Lockwasher	4	13		

PARTS INDENTED ARE INCLUDED IN THE PART UNDER WHICH THEY ARE INDENTED



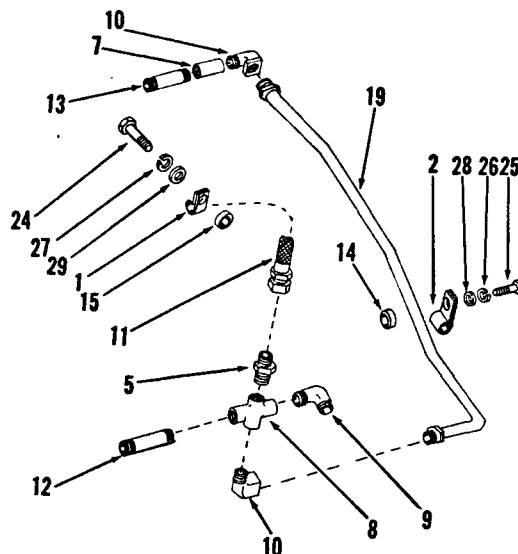
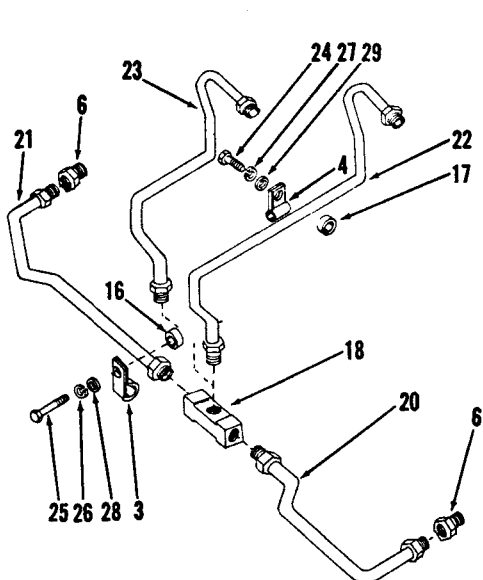
ENGINE APPLICATION		AUTOMOTIVE		B - OFF-HIGHWAY		C - CONSTRUCTION & INDUSTRIAL		P - INDUSTRIAL POWER	
		X				X		X	
PART NUMBER	PART NAME	NO. REQ'D.	REF. NO.	PART NUMBER	PART NAME	NO. REQ'D.	REF. NO.		
<b>SHUTDOWN VALVE</b>				<b>INJECTOR</b>					
BM-69973	Valve, shutdown (12V, 1 pole)	1		AR-73326	Injector PT (Type D)	8			
187556	Capscrew, coil to housing	4	1	194041	Link, injector (1/2")	8	16		
134072	Coil assembly	1	2	AR-73359	Injector, less link	8			
129826	Housing, valve	1	3	178088	Adapter, injector	8	17		
129838	Knob, manual override	1	4	195321	Cup, injector (7 x .0055 x 5°)	8	18		
129888	"O" ring, coil to housing	1	5	174299	Clip, filter screen	8	19		
190876	"O" ring, shaft	1	6	173086	Gasket, orifice	8	20		
70295	Plug, pipe	1	7	101754	"O" ring adapter	24	21		
196037	Shaft, manual override	1	8	203426	Pin, roll	16	22		
129839	Shield, fuel	1	9	173085	* Plug, orifice	8	23		
129768	Spring	1	10	178009	Retainer, cup	8	24		
129827	Valve	1	11	174298	Screen, filter	8	25		
				166009	Spring, injector	8	26		
<b>MOUNTING PARTS</b>				AR-40063	Barrel and plunger	8	27		
S-189-C	Capscrew, valve to housing	2	12	185782	Gasket	8	28		
S-1003-1	Connection (Auto, C)	1		167157	Ball, check	8	29		
181466	Lockwasher	2	13	187326	* Barrel, injector	8			
154087	"O" ring	1	14	189848	* Plug, barrel	8			
67684	Washer, plain	2	15	187858	* Coupling, plunger	8			
S-1004-1	Connection (P)	1		178980	* Plunger, injector	8			
				* Note: Not sold separately.					
<b>OPTIONAL</b>				<b>MOUNTING PARTS</b>					
BM-69985	Valve, shutdown (24V, 2 pole)	1		552458	Clamp, injector	8	30		
134076	Coil assembly	1		166392	Capscrew, hex head	8	31		
BM-69982	Valve, shutdown (12V, 2 pole)	1		69280	Washer	8	32		
134075	Coil assembly	1							
BM-69979	Valve, shutdown (24V, 1 pole)	1							
134074	Coil assembly	1							

PARTS INDENTED ARE INCLUDED IN THE PART UNDER WHICH THEY ARE INDENTED



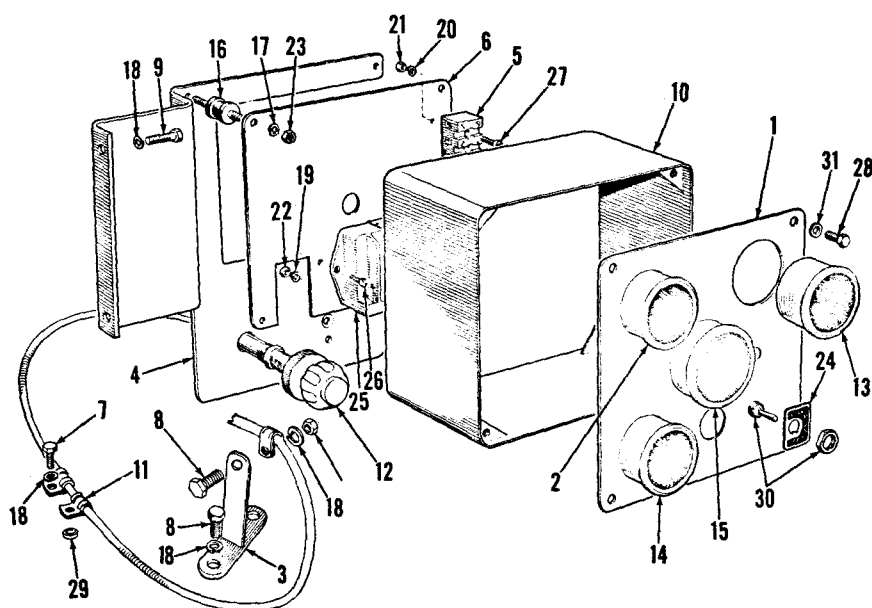
ENGINE APPLICATION		AUTOMOTIVE		X B - OFF-HIGHWAY		C - CONSTRUCTION & INDUSTRIAL		X P - INDUSTRIAL POWER		X	
PART NUMBER	PART NAME	NO. REQ'D.	REF. NO.	PART NUMBER	PART NAME	NO. REQ'D.	REF. NO.				
<b>PT FUEL SYSTEM</b>											
Each Cummins PT Fuel Pump is calibrated to obtain the best performance and fuel economy for your engine. Your Cummins Distributor or Dealer has the special tools required for complete rebuild and calibration. Caution: Do not disturb the fuel pressure settings or the throttle screw settings, as serious damage to your engine may result.											
Only PT Fuel System parts which can be replaced without pump calibration are listed here. Your Cummins Distributor will record the specific part number of your complete PT Fuel Pump in the front of this catalog.											
<b>FUEL PUMP DAMPER</b>											
BM-76340	Damper, fuel pump	1									
153336	Body, damper	1	1	BM-78793	Filter, fuel	1					
S-170-C	Capscrew	2	2	126516	Cartridge	1	13				
202897	Diaphragm	1	3	FF-105-D	Gasket, cover	1	14				
S-600	Lockwasher	2	4	255622	Head	1	15				
139988	"O" ring	1	5	142784							
100099	"O" ring	1	6		<b>P Application</b>						
153338	Plate, damper	1	7	156171	Filter, fuel	1					
151900	Seal	1	8	FF-105-D	Cartridge	1	13				
70704	Washer	2	9	255622	"O" ring, element	1	14				
160514	Washer, nylon	1	10	142784	Head, fuel filter	1	15				
<b>GEAR PUMP</b>											
<b>Auto, C Application</b>											
BM-96327	Pump, gear	1	11		<b>C Application</b>						
177764	Gasket	1	12		Filter, fuel	1					
<b>P Application</b>											
AR-00936	Pump, gear	1	11		Bolt, center	2	16				
177764	Gasket	1	12		Cartridge	2	17				
					"O" ring, element	2	18				
					Head, fuel filter	1	19				

PARTS INDENTED ARE INCLUDED IN THE PART UNDER WHICH THEY ARE INDENTED



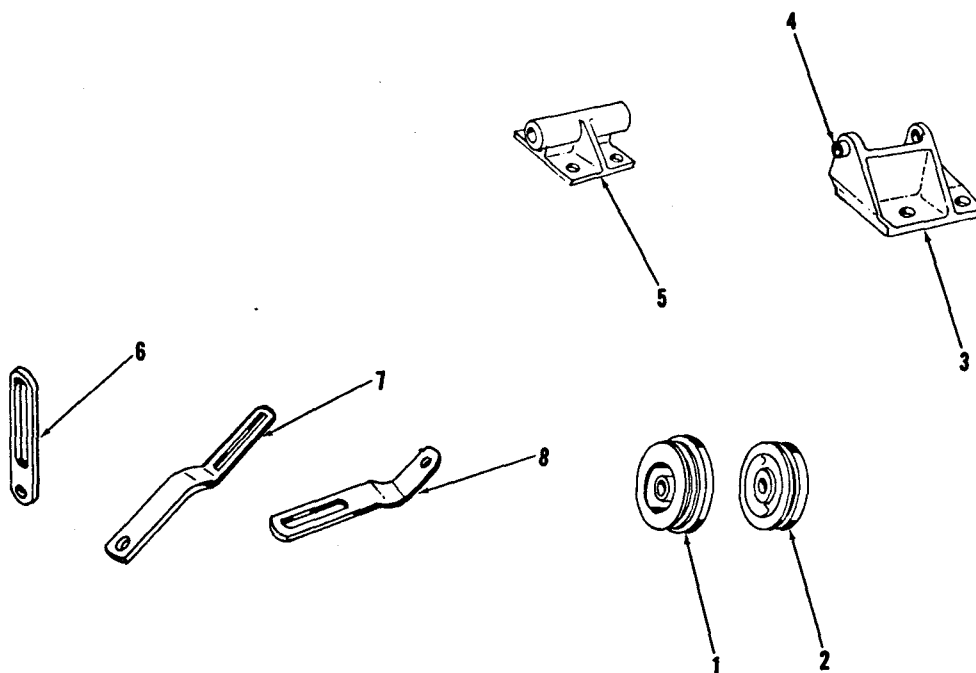
ENGINE APPLICATION		AUTOMOTIVE		X	B - OFF-HIGHWAY		C - CONSTRUCTION & INDUSTRIAL		X	P - INDUSTRIAL POWER		X
PART NUMBER	PART NAME	NO. REQ'D.	REF. NO.	PART NUMBER	PART NAME	NO. REQ'D.	REF. NO.					
FUEL TUBING				MOUNTING PARTS								
68152	Clip, hose	1	1	S-102	Capscrew, fuel line clip to push							
554014	Clip, hose	1	2		tube cover	2	24					
550465	Clip, assembly	1	3	S-105	Capscrew, fuel line clip to							
551394	Clip, hose	1	4		camshaft cover	2	25					
550475	Connector	1	5	S-604	Lockwasher	2	26					
S-1003-1	Connector	2	6	S-605	Lockwasher	2	27					
S-935	Coupling	1	7	S-602	Washer, plain	2	28					
175850	Cross-piece	1	8	S-626	Washer, plain	2	29					
43765-A	Elbow, drain	1	9									
185347	Elbow, crossover	2	10									
AS0401860SS	Hose (C,P)	1	11									
AS0402860SS	Hose (Auto)	1	11									
550291	Nipple	1	12									
550610	Nipple	1	13									
62087	Spacer	1	14									
65297	Spacer	1	15									
68368-A	Spacer	1	16									
114850	Spacer	1	17									
S-1006-1	Tee	1	18									
552184	Tube, fuel	1	19									
551212	Tube, fuel	1	20									
551213	Tube, fuel	1	21									
551217	Tube, fuel (C)	1	22									
551215	Tube, fuel (Auto)	1	23									
551797	Tube, fuel (P)	1	22									

PARTS INDENTED ARE INCLUDED IN THE PART UNDER WHICH THEY ARE INDENTED



ENGINE APPLICATION		AUTOMOTIVE		B - OFF-HIGHWAY		C - CONSTRUCTION & INDUSTRIAL		P - INDUSTRIAL POWER		X
PART NUMBER	PART NAME	NO. REQ'D.	REF. NO.	PART NUMBER	PART NAME	NO. REQ'D.	REF. NO.			
	<b>INSTRUMENT PANEL</b>			118367	Plate, indicator switch	1	24			
				162843	Regulator, voltage	1	25			
650436	Panel, instrument	1	1	131449	Screw	2	26			
68138	Adapter, hose	4		S-1316	Screw	3	27			
701214	Ammeter	1	2	S-1334	Screw	4	28			
109895	Bracket	1		150348	Shock mounting assembly	1				
650529	Bracket, throttle	1	3	68368-A	Spacer	1	29			
650814	Bracket, instrument case	1	4	102057	Switch, starting	1	30			
650449	Block, terminal	1	5	145027	Switch, magnetic	1				
650565	Backplate	1	6	149226	Switch, relay	1				
S-102	Capscrew (5/16"-18 x 1")	1	7	706085	Switch, oil pressure	1				
S-102-C	Capscrew (1/4"-28 x 2")	5		S-930-E	Tee, pipe	1				
S-115	Capscrew (5/16"-18 x 7/8")	4		70427	Washer, plain	4	31			
S-117	Capscrew (3/8"-16 x 3/4")	4	8	650816	Indicator, restriction assembly	1				
S-129	Capscrew (3/8"-24 x 1")	2	9	S-168-C	Capscrew	2				
650427	Case, instrument	1	10	550465	Clip	2				
550465	Clip	2	11	650817	Flange, adapter	1				
108722	Clamp, hose	2		650819	Insert	1				
187734	Control, throttle	1	12	S-600	Lockwasher	2				
162202	Connector	1		S-224	Nut	2				
S-902	Coupling, pipe	1		650818	Tap, restriction	1				
700469	Gauge, water temperature	1	13	650843	Tubing, nylon	A/R				
650651	Gauge, oil pressure	1	14	553391	Harness, wiring	1				
AS040136OSS	Hose	1		554013	Tube, clip assembly	8				
AS040376OSS	Hose	1		550465	Tube, clip assembly	4				
650525	Hourmeter	1	15							
650442	Isolator, vibration	4	16							
S-600	Lockwasher (1/4")	12	17							
S-604	Lockwasher (3/8")	7	18							
S-607	Lockwasher	2	19							
S-636	Lockwasher (5/32")	3	20							
S-223	Nut (3/8")	1								
S-256	Nut	3	21							
S-259	Nut	2	22							
S-270	Nut (1/4")	12	23							

PARTS INDENTED ARE INCLUDED IN THE PART UNDER WHICH THEY ARE INDENTED



ENGINE APPLICATION		AUTOMOTIVE		X		B - OFF-HIGHWAY		C - CONSTRUCTION & INDUSTRIAL		X		P - INDUSTRIAL POWER		X	
PART NUMBER	PART NAME	NO. REQ'D.	REF. NO.	PART NUMBER	PART NAME	NO. REQ'D.	REF. NO.								
ELECTRICAL EQUIPMENT				STARTING MOTOR											
<del>156958</del>	<del>Alternator (Auto, P)</del>	1		Auto, P Application											
157040	Alternator (C)	1		186397 S-106 S-608	Motor, starting	1									
AR-02336	Connector, regulator	1			Capscrew, motor	3									
AR-02337	Connector, regulator	1			Lockwasher, motor	3									
156958	Fan and baffle alternator (Auto, P)	1		C Application	Same as above except:										
<del>164337</del>	<del>Pulley alternator (Auto, P)</del>	1	1												
176088	Pulley alternator (C)	1	2												
191818	Regulator	1		ADD:											
145027	Switch, magnetic	1													
102846	Switch, ignition	1													
MOUNTING PARTS				114123	Gasket, motor	1									
<del>178472</del>	<del>Bolt (Auto, P)</del>	1													
178471	Bolt (C)	1													
BM-96737	Bracket and bushing alternator (179078) (Auto, P)	1	3												
176365	Bushing	1	4												
171299	Bracket, alternator (C)	1	5												
S-199-B	Capscrew (Auto, P)	1													
S-103-D	Capscrew, alternator bracket	1													
S-112	Capscrew, alternator bracket (Auto)	4													
S-112	Capscrew, alternator bracket (C,P)	5													
S-102	Capscrew, adjusting link	1													
S-151	Capscrew (C)	1													
S-604	Lockwasher	7													
S-610	Lockwasher (C)	1													
S-605	Lockwasher	1													
163666	Link, adjusting (Auto)	1	6												
182716	Link, adjusting (C)	1	7												
182708	Link, adjusting (P)	1	8												
S-223	Nut (Auto, P)	1													
S-217	Nut (C)	1													
108515	Shim, alternator	A/R													
S-602	Washer (C,P)	1													
146161	Washer (Auto, P)	1													

PARTS INDENTED ARE INCLUDED IN THE PART UNDER WHICH THEY ARE INDENTED

ENGINE APPLICATION		AUTOMOTIVE		B - OFF-HIGHWAY		C - CONSTRUCTION & INDUSTRIAL		P - INDUSTRIAL POWER	
		X				X		X	
PART NUMBER	PART NAME	NO. REQ'D.	REF. NO.	PART NUMBER	PART NAME	NO. REQ'D.	REF. NO.		
	<b>FLYWHEELS, RING GEARS and FLYWHEEL HOUSINGS</b>								
	Flywheels, ring gears and flywheel housings have been designed to adapt the Cummins diesel to hundreds of different installations. For this reason these assemblies are not listed.								
	Your Cummins Distributor will record fly-wheel, ring gear and flywheel housing part numbers in the front of this catalog.								
	<b>GASKET SETS</b>								
AR-60180	Gasket set, cylinder head	1							
AR-60181	Gasket set, engine	1							
BM-68356	Gasket set, fuel pump	1							



# NUMERICAL INDEX

Part Number	Description	Page	Part Number	Description	Page	Part Number	Description	Page
AR-00588	Gasket, cyl. head	9	BM-99814	Block, cylinder	1	108515	Shim, alternator	37
AR-00589	Gasket, cyl. head	9	BM-99820	Bearing set, main	3	108722	Clamp, hose	31,36
AR-00936	Pump, gear	34	BM-99986	Lever & bushing	8	109319	Lockplate	12
AR-02336	Connector	37	BM-99987	Lever, rocker	8	109895	Bracket	36
AR-02337	Connector	37				110827	Retainer, element	19
AR-03926	Head Assembly	31				110848	Element	19
AR-04130	Ring set	31	AS0401360SS	Hose	36	110980	Hose	25
AR-40063	Barrel & Plunger	33	AS0401860SS	Hose	35	114123	Gasket	37
AR-60078	Head, cylinder	9	AS0402860SS	Hose	35	114223	Pin, tappet	7
AR-60079	Head assembly	9	AS0403760SS	Hose	36	114850	Spacer	35
AR-60086	Pump, lub. oil	12	AS0502660SS	Hose	25	116029	"O" ring, support	18
AR-60089	Body and bushing	12				116759	Bearing	23
AR-60090	Gear, idler	12	AF-250	Element	10	116935	Adapter	25
AR-60092	Cover & bushing	12	AF-252	Element	29	116936	Elbow	25
AR-60098	Pump, lub. oil	12				117559	Lockplate	13,15
AR-60105	Body & bushing	13				118367	Plate, switch	36
AR-60108	Pump, lub. oil	13	FF-105	Cartridge	34	119221	Spacer, fan	23
AR-60122	Cover & tube	10	FF-105-D	Cartridge	34	119810	Pin, Piston	31
AR-60180	Gasket set	38				119859	Ring, snap	31
AR-60181	Gasket set	38				120684	Washer, relief valve	25
AR-60253	Filter, lub. oil	17				122121	Spring	29
AR-60486	Tube, suction	12	LF-500	Cartridge	18	125015	Gasket, washer	10
AR-60495	Tube, suction	12	LF-613	Cartridge	17	125016	Washer, cover	10
AR-60508	Shaft	8				125019	Gasket, cover	10
AR-60615	Camshaft	6				125740	Clamp	29
AR-60679	Pump, water	20	5846	Strap	29	126304	Yoke, regulator	12,13
AR-60698	Kit, water pump rep.	20	9089	Dowel	11	126516	Bolt, center	34
AR-61400	Ring set	4	9221	Gasket	20	127936	Seal	31
AR-73075	Intake & exhaust valve assy.	31	43765-A	Elbow, drain	35	127940	Valve	31
AR-73076	Unloading vlv. assy.	31	43828-A	Clamp	25	128080	Spring	31
AR-73326	Injector	33	43828-D	Clamp	25	128085	"O" ring	31
AR-73359	Injector	33	62087	Spacer	35	128086	"O" ring	31
AR-73455	Radiator & shroud	25	65297	Spacer	35	128765	Dowel, half ring	3
AR-73582	Air compressor	31	66292	Gasket	27	129768	Spring	33
			67012-1	Spacer, fan	23	129826	Housing	33
			67526	Clamp	23	129827	Valve	33
			67949	Clip, hose	25	129838	Knob	33
BM-68356	Gasket set	38	68138	Adapter, hose	36	129839	Shield, fuel	33
BM-69973	Valve, shutdown	33	68152	Clip, hose	35	129888	"O" ring	33
BM-69979	Valve, shutdown	33	68270	Connection, water	20	131911	Orifice, plug	18
BM-69982	Valve, shutdown	33	68368-A	Spacer	35,36	132049	Relief valve	25
BM-69985	Valve, shutdown	33	68568	Dowel	1,5	133748	Cover	29
BM-76340	Damper, fuel pump	34	68586	Bushing	12,13	134072	Coil	33
BM-77410	Piston assembly	31	68908-A	Lockplate	6,13	134074	Coil	33
BM-78775	Tube, vent	9	69562	Dowel	1,11	134075	Coil	33
BM-78784	Rod, connecting	4	69972	Hose	25	134076	Coil	33
BM-78793	Filter, fuel	34	70540	Spacer, fan	23	135601	Head, fuel filter	34
BM-79721	Gasket, cyl. head	9	70645	Dowel	1	136403	Nameplate	31
BM-79722	Lever & bushing	8	70760	Dowel	1,13	138381	Hose	25
BM-79723	Lever, rocker	8	70768	Stud, connection	25	139988	"O" ring	34
BM-79724	Lever & bushing	8	100973	Dowel, ring	1,9	140329	Gasket	22
BM-79725	Lever, rocker	8	100099	"O" ring	34	142784	Head	34
BM-91498	Tube, aerator	13	101322	Cap, oil filler	10	143108	Gasket	23
BM-91604	Cooler, lub. oil	19	101754	"O" ring	33	143116	Bearing	23
BM-92138	Body, scavenger	13	102057	Switch, starting	36	144714	Seat	31
BM-93759	Housing	32	102846	Switch	37	144948	Valve	31
BM-93760	Drive, fuel pump	32	102957	Dowel	1,11	145027	Switch, magnetic	36,37
BM-94014	Tappet, valve	7	103807	Hose	29	145028	Seat	31
BM-94016	Tappet, injector	7	105312	Elbow	29	145664	Bracket, filter	18
BM-94480	Hub, fan	23	106276	Seal, oil	23	145665	Strap, mounting	18
BM-94498	Tube, oil suction	13	106835	Cleaner, air	29	146651	Clamp	23,25
BM-96141	Damper, vibration	3	107091	Strap	29	146647	Shaft, fan hub	23
BM-96156	Impeller, water pump	20	107105	Adapter	29	147209	Pilot, fan	23
BM-96200	Piston, assembly	4	107125	Cover	29	147389	Screw, crosshead adj.	9
BM-96327	Pump, gear	34	107126	Gasket	29	147610	Bushing	31,32
BM-96630	Crossover, water	22	107127	Gasket	29	148293	"O" ring	19
BM-96631	Crossover, water	22	107128	Shell	29	148547	Dowel	1
BM-96737	Bracket & bushing	37	107738	Socket	7	149226	Switch, relay	36
BM-96834	Gear and bushing	13	107776	Flinger, water pump	20	150037	Spring	18
BM-96885	Crankcase, compressor	31	107981	Cap, oil filler	10	150038	Coupling, half	18
BM-99677	Crankshaft	3	108186	Lockwire	7	150039	Coupling, half	18
BM-99803	Tube, suction	13	108187	Lockwire	7	150348	Shock, mounting	36