

V-555 SERIES ENGINE

Parts Ordering for: V-555 & VT-555 Series

Genuine Cummins Parts and service facilities are worldwide. There are more than 3500 Cummins Sales and Service locations in the principal cities of the United States and Canada, and more than 500 Sales and Service locations situated elsewhere throughout the free world. Each distribution outlet is thoroughly equipped with technical data, factory-trained mechanics, modern equipment and a full, adequate stock of Genuine Cummins Parts.

For quicker and better service, your parts requirements should be ordered from your nearest Cummins Distributor or Dealer. At any of the locations prompt, intelligent, courteous service is a basic trademark. Each is ready and eager to help in every possible way through personal contact or through the mail — at your convenience.

The satisfactory ordering and receiving of parts by the purchaser is greatly dependent upon the proper use of available information. In order that all avoidable errors may be eliminated, the following instructions are offered as the purchaser's guide:

Write your order clearly, using a typewriter if possible.

Be sure to list the correct part number. If in doubt as to the correct part number, state the model and serial number of the engine on which the part is to be used. Part numbers are usually located in various places on the part itself.

When possible, arrange your purchase order in part number numerical sequence.

Always specify shipping instructions — "Best Way" is satisfactory if you have no preference.

State your company name and shipping address clearly.

Genuine Cummins Parts mean **QUALITY!** They're designed and engineered to fit best in your Cummins Diesel. Each part is made of the highest quality material — on the most accurate of machines — by the top craftsmen of the trade.

You can be sure a Genuine Cummins Part will fit better — do the job better — lessen the chances of costly breakdown. When you buy replacement parts, buy quality. Buy Genuine Cummins Parts!

YOU OWN THE BEST . . . REPAIR WITH THE BEST

CUSTOMER SERVICE INFORMATION

This Parts Catalog contains parts information for the V-555 and VT-555 Series.

Part numbers appearing in () are for identification purposes only and should not be used when ordering service replacement parts.

The form below is provided for your convenience and when properly filled out, will allow proper identification of your unit and the normal maintenance items. Parts information errors that could cause extended down time could be avoided if the information on this is referred to when ordering parts from your Cummins Distributor or Dealer.

**ALWAYS SPECIFY ENGINE MODEL AND SERIAL NUMBER
WHEN ORDERING PARTS FROM THIS CATALOG**

Engine Model _____ Engine Serial No. _____

MFG Make_____ Model_____ Chassis No._____

Fuel Pump Assembly No. _____ Injector No. _____

Belt, Fan_____ Belt, Water Pump_____ Belt, Gen.: _____

Element, Fuel Filter_____ Full Flow Lub. Filter_____

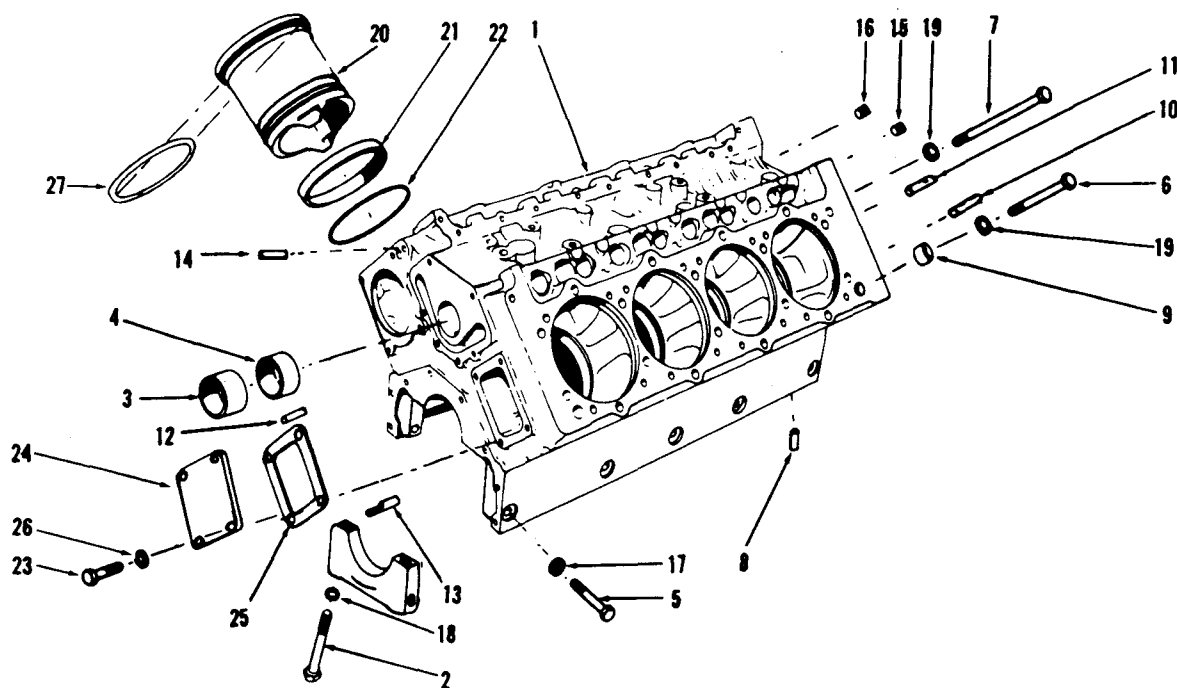
Air Cleaner_____ By-Pass Lub. Filter_____

Special Equipment

Cummins Distributor _____

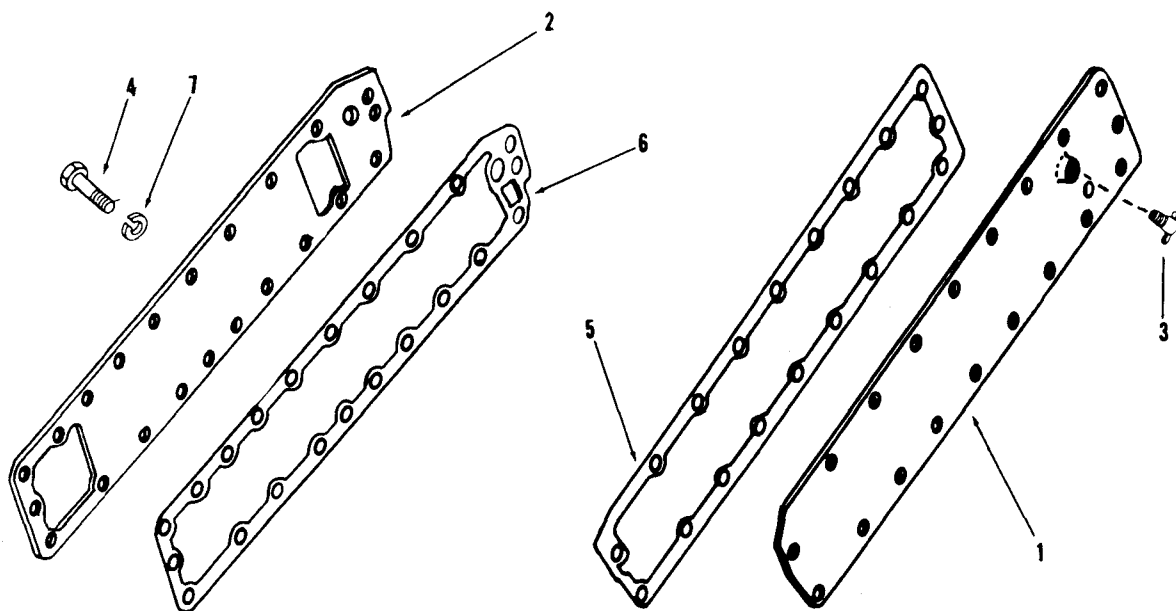
TABLE OF CONTENTS

Air Compressor	24, 25	Gear Housing and Cover	9
Alternator	37	Injector	32, 33
Breather	12	Intake Manifold (V-555).	22
Camshaft and Cover.	6	Intake Manifold (VT-555).	23
Camshaft Bushings.	1	Lubricating Oil By-Pass Filter	15
Connecting Rod	4	Lubricating Oil Cooler	16, 17
Crankshaft	3	Lubricating Oil Filter	16, 17
Cylinder Block	1	Lubricating Oil Pump	14
Cylinder Head.	10, 11	Main Bearing Shells	3
Cylinder Head Cover	12	Oil Pan	13
Cylinder Kit	4	Pistons	4
Cylinder Liner	1, 4	Piston Rings	4
Dipstick and Tube	13	Push Rods	7
Electrical Equipment	37	Rocker Levers.	8
Exhaust Manifold (V-555).	27	Shutdown Valve	32, 33
Exhaust Manifold (VT-555).	28, 29	Starting Motor	37
Fan Hub	19	Tappets	7
Flywheel Housing	36	Thermostat and Housing.	20
Flywheel and Ring Gear	36	Turbocharger	30, 31
Front Cover	5	Turbocharger Connections	29
Front Engine Support	5	Turbocharger Heat Shield	29
Front Water Header Cover.	1	Turbocharger Repair Kit.	31
Fuel Filter	34, 35	Vibration Damper	3
Fuel Gear Pump	34, 35	Water Filter	21
Fuel Pump Damper	34, 35	Water Header Cover	2
Fuel Pump Drive	26	Water Pump and Pulley.	18
Fuel Tubing	37	Water Pump Repair Kit.	18
Gasket Sets	38		



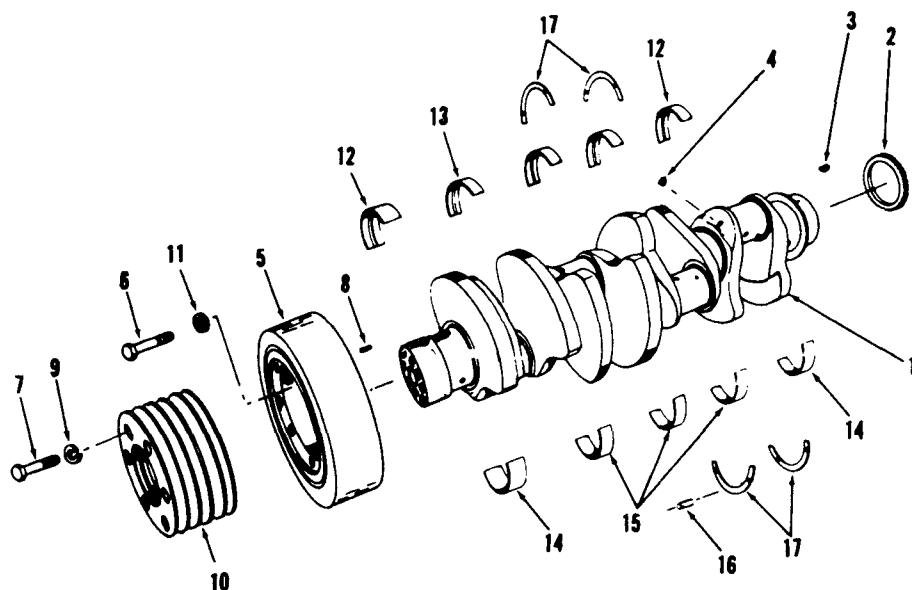
PART NUMBER	PART NAME	NO. REQ'D.	REF. NO.	PART NUMBER	PART NAME	NO. REQ'D.	REF. NO.
	CYLINDER BLOCK				MOUNTING PARTS		
	All Models						
AR-61138	Block, cylinder (202322)	1	1	AR-61139	Kit, cylinder liner	8	
180676	Bolt, main bearing cap	10	2	202460	Liner, cylinder	8	20
554003	Bushing, camshaft (No. 1 and 5 position)	2	3	216284	Packing, cylinder liner	8	21
554004	Bushing, camshaft (No. 2, 3 and 4 position)	3	4	216283	Seal, crevice	8	22
188395	Capscrew, main bearing side locking	10	5		FRONT WATER HEADER COVER		
553444	Capscrew, cylinder head (short)	26	6		All Models		
553445	Capscrew, cylinder head (long)	10	7	S-112	Capscrew, water header cover	4	23
148547	Dowel, rear main bearing cap	2	8	551455	Cover, water header	1	24
100973	Dowel ring, cylinder head to block	4	9	167802	Gasket, water header cover	1	25
69562	Dowel, gear housing to block (Master)	2	10	S-604	Lockwasher	4	26
102957	Dowel, gear housing to block (Diamond)	2	11		OVERSIZE FOR SERVICE		
70645	Dowel, front cover to block (Master)	1	12		All Models		
68568	Dowel, front cover to block (Diamond)	1	13				
153807	Dowel, gear housing to block (Diamond)	1	14	171786	Shim, liner (.007")	A/R	27
161825	Plug, pipe	2	15	171787	Shim, liner (.010")	A/R	27
217632	Plug, pipe	6	16	171788	Shim, liner (.012")	A/R	27
188394	Washer, main bearing side locking	10	17	171789	Shim, liner (.014")	A/R	27
553451	Washer, main bearing cap	10	18	171790	Shim, liner (0.21")	A/R	27
553451	Washer, cylinder head capscrew	36	19		SEMI-FINISHED MAIN BEARING CAPS		
					All Models		
				193010	Cap, main bearing (front)	1	
				193013	Cap, main bearing (No. 2)	1	
				193012	Cap, main bearing (No. 3)	1	
				193011	Cap, main bearing (No. 4)	1	
				193009	Cap, main bearing (rear)	1	

PARTS INDENTED ARE INCLUDED IN THE PART UNDER WHICH THEY ARE INDENTED



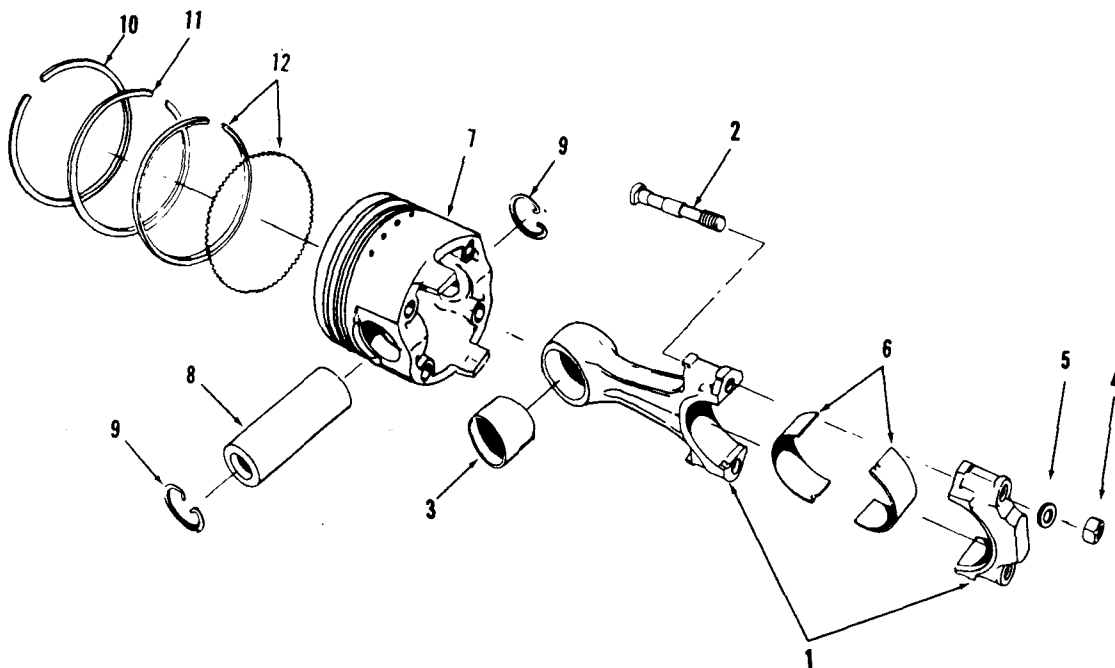
PART NUMBER	PART NAME	NO. REQ'D.	REF. NO.	PART NUMBER	PART NAME	NO. REQ'D.	REF. NO.
	WATER HEADER COVER				MOUNTING PARTS		
	All Models			S-109	Capscrew, cover to block	26	4
193557	Cover, water header (L.B.)	1	1	167800	Gasket, cover to block (L.B.)	1	5
554849	Cover, water header (R.B.)	1	2	555102	Gasket, cover to block (R.B.)	1	6
S-962-E	Drain cock	1	3	S-604	Lockwasher	26	7

PARTS INDENTED ARE INCLUDED IN THE PART UNDER WHICH THEY ARE INDENTED



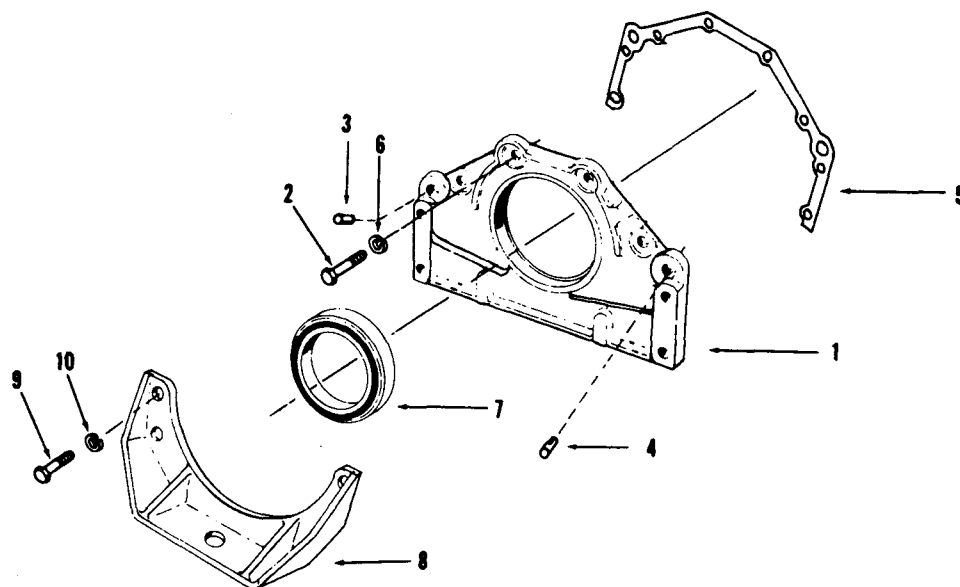
PART NUMBER	PART NAME	NO. REQ'D.	REF. NO.	PART NUMBER	PART NAME	NO. REQ'D.	REF. NO.
	CRANKSHAFT				MAIN BEARINGS		
	All Models				All Models		
AR-61102	Crankshaft assembly	1		AR-62184	* Bearing set, main std.	1	
201950	Crankshaft	1	1	214420	Bearing main (upper 1 and 5)	2	12
177086	Gear, crankshaft	1	2	214440	Bearing main (upper 2, 3 and 4)	3	13
144131	Key, crankshaft gear	1	3	214430	Bearing main (lower 1 and 5)	2	14
217632	Plug, pipe	4	4	214450	Bearing main (lower 2, 3 and 4)	3	15
				173640	Ring, half thrust (lower)	2	17
				553670	Ring, half thrust (upper)	2	17
				148547	Dowel, half thrust	2	16
	DAMPER						
	All Models						
AR-73725	Damper, vibration (554025)	1	5		* Main bearings may be purchased in .010", .020" and .030" undersize.		
195918	Capscrew	8	6				
S-136	Capscrew	6	7				
555965	Dowel	1	8				
S-608	Lockwasher	6	9				
202294	Pulley, crankshaft	1	10				
153411	Washer, hardened	8	11				

PARTS INDENTED ARE INCLUDED IN THE PART UNDER WHICH THEY ARE INDENTED



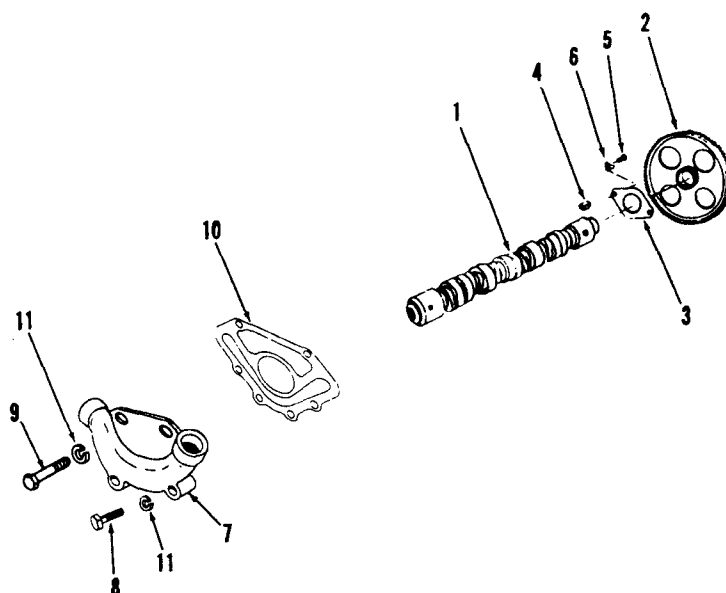
PART NUMBER	PART NAME	NO. REQ'D.	REF. NO.	PART NUMBER	PART NAME	NO. REQ'D.	REF. NO.
CONNECTING ROD				PISTON (Cont'd.)			
V-555				VT-555			
AR-61914	Rod, connecting (554335)	8	1	3275431	Piston, assembly	8	
554944	Bolt, connecting rod	16	2	3275949	Piston	8	7
555421	Bushing, piston pin	8	3	554785	Piston, pin	8	8
209869	Nut, connecting rod	16	4	S-16256	Ring, snap	12	9
209868	Washer, connecting rod	16	5				
556350	* Bearing, connecting rod (std.)	16	6				
VT-555				RINGS			
All Models				All Models			
AR-61919	Rod, connecting (554336)	8	1	AR-61500	Ring set, piston (std.)	8	
554944	Bolt, connecting rod	16	2	201650	Ring, piston top	8	10
555420	Bushing, piston pin	8	3	208990	Ring, compression	8	11
209869	Nut, connecting rod	16	4	201645	Ring, oil	8	12
209868	Washer, connecting rod	16	5				
556350	* Bearing, connecting rod (std.)	16	6				
* Connecting rod bearing shells may be purchased in 0.010", 0.020", or 0.030" undersize.				CYLINDER KIT			
PISTON				V-555			
V-555				VT-555			
AR-62440	Piston, assembly	8		AR-62790	Kit, cylinder	8	
556650	Piston	8	7	AR-61139	Kit, cylinder liner	8	
554785	Pin, piston	8	8	AR-62240	Piston assembly	8	
S-16256	Ring, snap	16	9	AR-61500	Ring, set	8	
				3275952	Kit, cylinder	8	
				AR-61139	Kit, cylinder liner	8	
				3275431	Piston assembly	8	
				AR-61500	Ring set	8	

PARTS INDENTED ARE INCLUDED IN THE PART UNDER WHICH THEY ARE INDENTED



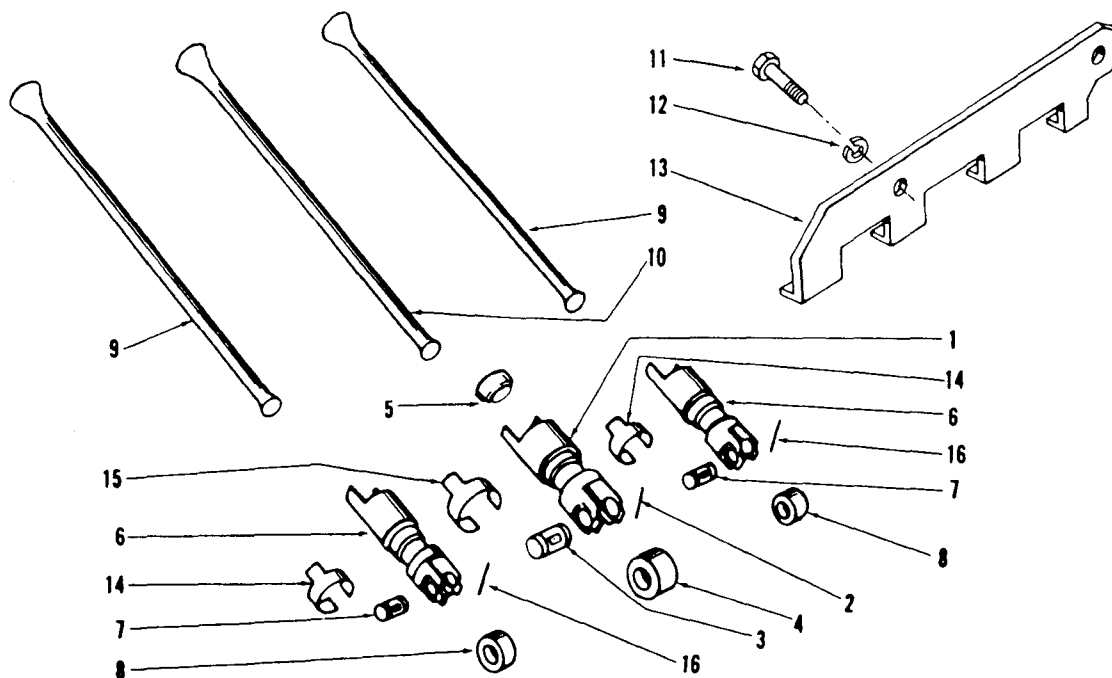
PART NUMBER	PART NAME	NO. REQ'D.	REF. NO.	PART NUMBER	PART NAME	NO. REQ'D.	REF. NO.
	FRONT COVER				FRONT ENGINE SUPPORT		
	All Models				All Models		
203117	Cover, front	1	1	188397	Support, front	1	8
S-112	Capscrew, front cover	2	2				
70645	Dowel (Master)	1	3				
68568	Dowel (Diamond)	1	4		MOUNTING PARTS		
203062	Gasket, front cover	1	5		Capscrew, front support	4	9
S-604	Lockwasher	2	6	106289	Lockwasher	4	10
3010461	Seal, crankshaft	1	7	S-608			
3010465	* Repair sleeve	1					
556411	Capscrew, socket head	2					
	* Seal installation tool						

PARTS INDENTED ARE INCLUDED IN THE PART UNDER WHICH THEY ARE INDENTED



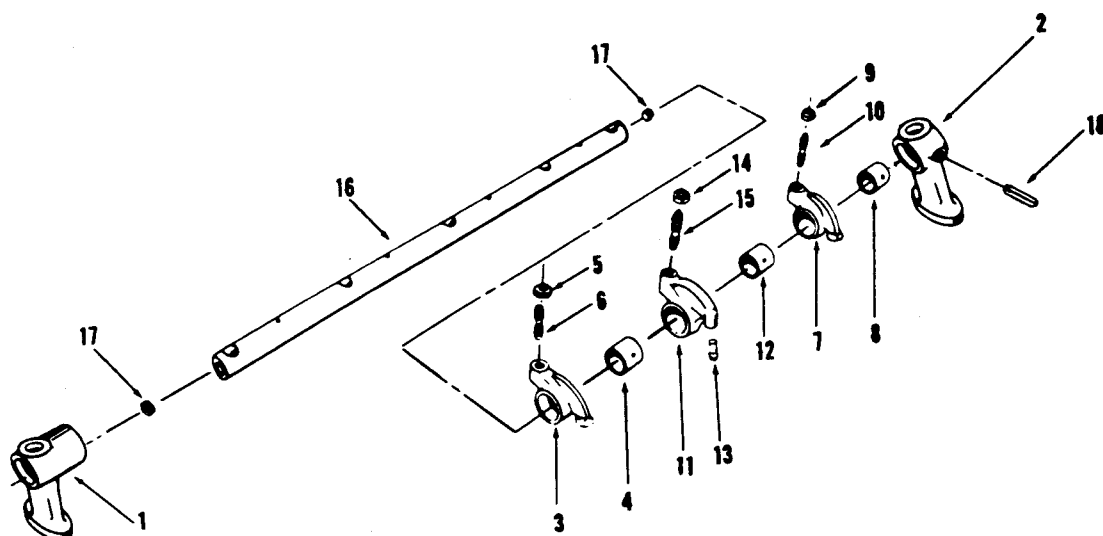
PART NUMBER	PART NAME	NO. REQ'D.	REF. NO.	PART NUMBER	PART NAME	NO. REQ'D.	REF. NO.
	CAMSHAFT				CAMSHAFT COVER		
212260	Camshaft, VT-555	1			All Models		
201050	Camshaft, V-555	1	1				
187649	Gear, camshaft	1	2	555190	* Cover, camshaft	1	7
167305	Plate, thrust	1	3	S-104	Cap screw	2	8
200717	Key, camshaft (std.)	1	4	S-103-D	Cap screw	4	9
				550164	Gasket	1	10
				S-604	Lockwasher	6	11
	MOUNTING PARTS				* Note: Also listed on Page 20.		
S-107	Cap screw thrust bearing	2	5				
68908-A	Lockplate, thrust bearing	2	6				
	CAMSHAFT KEYS FOR RETARDING AND ADVANCING TIMING						
200715	Key, camshaft 0.006" off set						
200716	Key, camshaft 0.012" off set						
200718	Key, camshaft 0.024" off set						
200719	Key, camshaft 0.030" off set						
200721	Key, camshaft 0.036" off set						
S-313	Key, camshaft						

PARTS INDENTED ARE INCLUDED IN THE PART UNDER WHICH THEY ARE INDENTED



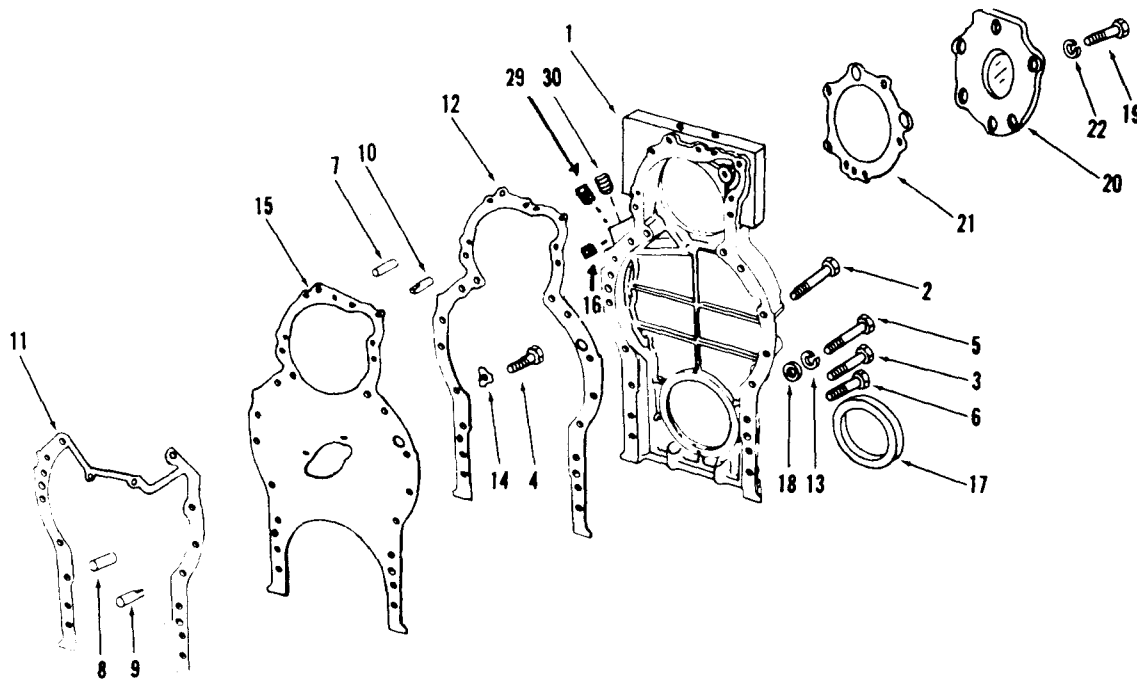
PART NUMBER	PART NAME	NO. REQ'D.	REF. NO.	PART NUMBER	PART NAME	NO. REQ'D.	REF. NO.
	PUSH RODS AND TAPPETS				MOUNTING PARTS		
	All Models			S-110	Capscrew, tappet guide plate	16	11
BM-94016	Tappet, injector assembly (171936)	8	1	S-605	Lockwasher	16	12
111272	Lockwire, tappet	8	2	551084	Plate, tappet guide	8	13
114223	Pin, injector tappet	8	3	156438	Spring, valve tappet	16	14
154571	Roller, injector tappet	8	4	156439	Spring, injector tappet	8	15
107738	Socket, injector tappet	8	5				
BM-94014	Tappet, valve assembly (171937)	16	6				
169154	Pin, valve tappet	16	7				
153679	Roller, valve tappet	16	8				
108186	Lockwire	16	16				
202835	Rod, push (valve)	16	9				
202834	Rod, push (injector)	8	10				

PARTS INDENTED ARE INCLUDED IN THE PART UNDER WHICH THEY ARE INDENTED



PART NUMBER	PART NAME	NO. REQ'D.	REF. NO.	PART NUMBER	PART NAME	NO. REQ'D.	REF. NO.
	ROCKER LEVERS						
	All Models						
553453	Bracket, rocker lever shaft	8	1				
553454	Bracket, rocker lever shaft (3277051)	2	2				
BM-79723	Lever, exhaust valve rocker	8					
3275953	Lever and bushing	8	3				
152937	Bushing, valve rocker lever	8	4				
S-212	Nut, adjusting screw	8	5				
168306	Screw, adjusting	8	6				
BM-79725	Lever, intake rocker (168255)	8					
BM-79724	Lever and bushing	8	7				
152937	Bushing, valve rocker lever	8	8				
S-212	Nut, adjusting screw	8	9				
168306	Screw, adjusting	8	10				
BM-99987	Lever, injector rocker (194038)	8					
BM-99986	Lever and bushing	8	11				
152936	Bushing, injector rocker lever	8	12				
194037	Socket, injector link	8	13				
S-212	Nut, adjusting screw	8	14				
168306	Screw, adjusting	8	15				
AR-61113	Shaft, rocker lever (553455)	2	16				
161825	Plug, rocker shaft	4	17				
551609	Pin, rocker shaft locating	2	18				

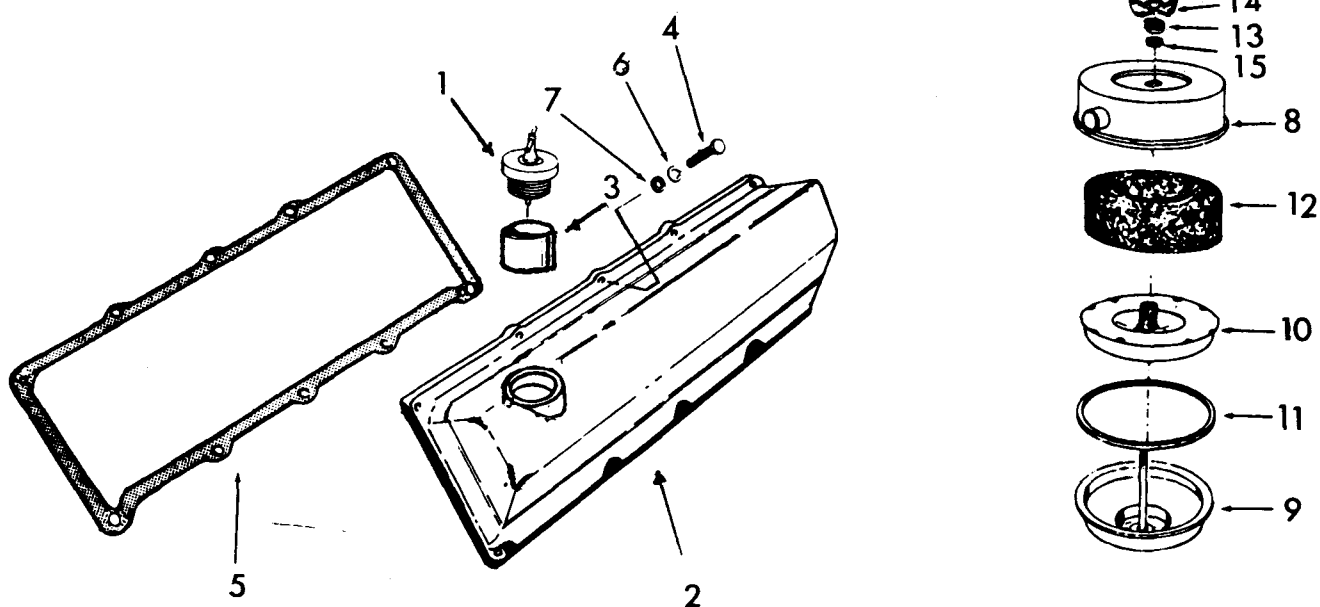
PARTS INDENTED ARE INCLUDED IN THE PART UNDER WHICH THEY ARE INDENTED



PART NUMBER	PART NAME	NO. REQ'D.	REF. NO.	PART NUMBER	PART NAME	NO. REQ'D.	REF. NO.
	GEAR HOUSING			ADD:			
	V-555			556099	Housing, gear	1	1
202476	Housing gear	1	1	121229	Elbow	1	
S-102-D	Capscrew housing to block	1	2	3275101	Connection, oil drain	1	
S-104	Capscrew housing to block	6	3				
S-109	Capscrew plate to block	2	4				
S-126	Capscrew housing to block	2	5		GEAR HOUSING COVER		
108707	Capscrew housing to block	6	6		Auto Application Only		
9089	Dowel (Master)	1	7				
69562	Dowel (Master)	1	8	S-105	Capscrew	5	19
102957	Dowel (Diamond)	1	9	555336	Cover	1	20
153807	Dowel (Diamond)	1	10	203036	Gasket	1	21
203008	Gasket, plate to block	1	11	S-604	Lockwasher	6	22
203026	Gasket, gear housing to plate	1	12	S-199-B	Capscrew	1	
S-604	Lockwasher	15	13				
175282	Lockplate	2	14				
202566	Plate gear housing	1	15				
69901	Hex plug	1	16				
3010459*	Seal, crankshaft	1	17				
3010465	Repair sleeve	1					
S-602	Washer, plain	15	18				
112076	Plug pipe	1	29				
112076	Plug pipe	1	30				
	* Seal & Installation Tool						
142110	Cup plug, barring hole	1					
	VT-555						
	Same as above except:						
OMIT:							
202476	Housing, gear	1	1				
112076	Plug, pipe	1	30				

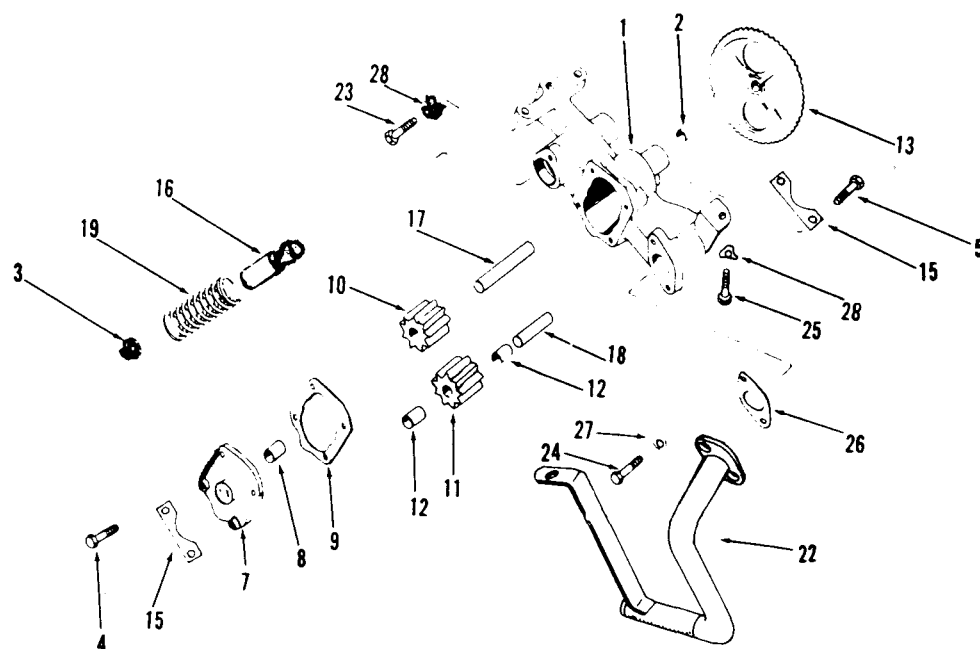
PARTS INDENTED ARE INCLUDED IN THE PART UNDER WHICH THEY ARE INDENTED





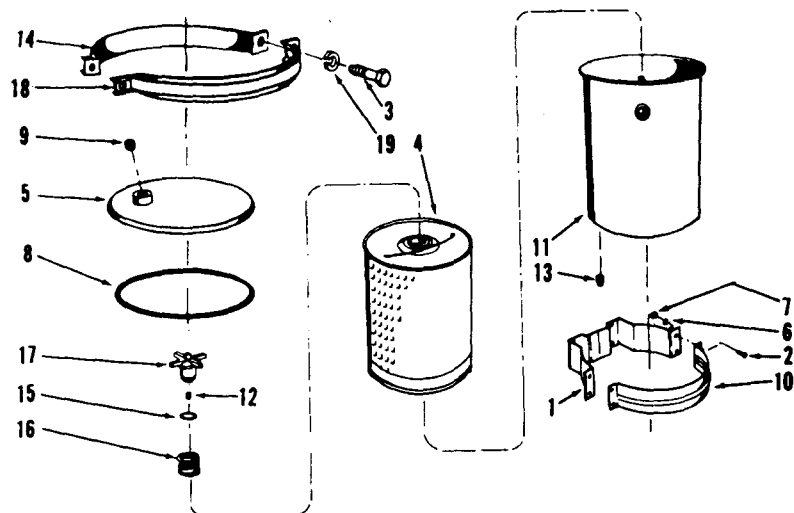
PART NUMBER	PART NAME	NO. REQ'D.	REF. NO.	PART NUMBER	PART NAME	NO. REQ'D.	REF. NO.
	CYLINDER HEAD COVER V-555				MOUNTING PARTS		
101322	Cap, oil filler	1	1	108707	Capscrew, cover	20	4
553462	Cover, cylinder head (L.B.)	1		157018	Gasket, cover	2	5
AR-60520	Cover and tube (R.B.)	1		S-604	Lockwasher	20	6
551787	Cover, cylinder head (R.B.)	1	2	S-602	Washer, plain	20	7
550113	Tube, filler	1	3	556838	Tube, breather (R.B.)	1	
554833	Name label	2		556841	Tube, breather (L.B.) (Auto)	1	
				556840	Tube, breather (L.B.) (C)	1	
				556869	Hose	2	
				43828	Clamp	4	
				550692	Clip	2	
				556843	Bracket support (R. B.)	1	
				161748	Bracket support (L. B.)	1	
108707	Capscrew, cover	20	4	S-223	Nut	1	
157018	Gasket, cover	2	5	S-109	Capscrew	1	
S-604	Lockwasher	20	6	S-112	Capscrew	1	
S-602	Washer, plain	20	7	S-120	Capscrew	1	
				S-602	Washer	2	
				S-604	Lockwasher	3	
	CYLINDER HEAD COVER VT-555				CRANKCASE BREATHER VT-555		
101322	Cap, oil filler	1	1				
551787	Cover, cylinder head (L.B.)	1					
AR-60829	Cover, cylinder head (R.B.)	1		3302880	Breather, crankcase	2	
553463	Cover, cylinder head (R.B.)	1	2	255803	Assembly, upper body	1	8
550113	Tube, filler	1	3	255806	Assembly, lower body	1	9
554833	Name label	2		3302884	Assembly, vapor element	1	10
				254608	Gasket	1	11
				3302770	Assembly, element	1	12
				255816	Washer	1	13
				250026	Wing nut	1	14
				3302180	Gasket	1	15

PARTS INDENTED ARE INCLUDED IN THE PART UNDER WHICH THEY ARE INDENTED



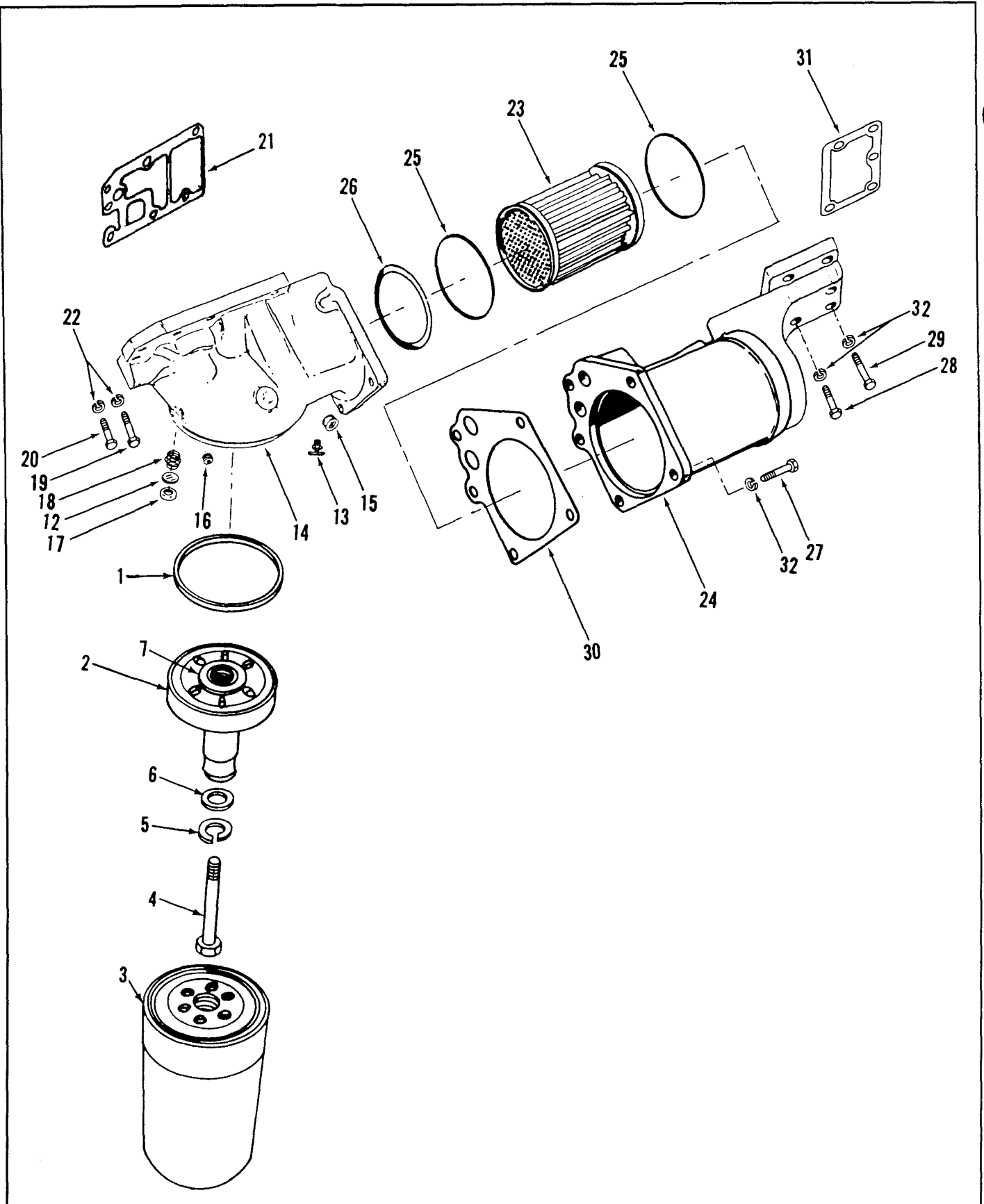
PART NUMBER	PART NAME	NO. REQ'D.	REF. NO.	PART NUMBER	PART NAME	NO. REQ'D.	REF. NO.
	LUBRICATING OIL PUMP				MOUNTING PARTS		
	V-555			S-103-D	Capscrew, pump to block	2	23
AR-62181	Pump, lubricating oil	1		3275340	Capscrew, tube to pump	2	24
AR-60089	Body and bushing (187011)	1	1	S-112	Capscrew, pump to block	1	25
68586	Bushing	1	2	164916	Gasket, tube to pump	1	26
556338	Plug, by-pass spring	1	3	175282	Lockplate, pump to block	3	28
S-107	Capscrew	2	4				
S-155-A	Capscrew	2	5				
AR-60092	Cover and bushing (181165)	1	7				
68586	Bushing	1	8				
178283	Gasket, cover	1	9				
187012	Gear, idler drive	1	10				
AR-60090	Gear idler (187013)	1	11				
68586	Bushing	2	12				
184044	Gear main drive	1	13				
551117	Lockplate, cover to body	2	15				
183014	Plunger, pressure regulator	1	16				
178284	Shaft, drive	1	17				
190138	Shaft, idler	1	18				
135527	Spring, regulator	1	19				
3010618	Tube, oil suction assembly	1	22				
3275137	Circlip	1					
	VT-555						
	Same as above except:						
3275912	Pump lubricating oil	1					
3277006	Spring regulator	1	19				

PARTS INDENTED ARE INCLUDED IN THE PART UNDER WHICH THEY ARE INDENTED



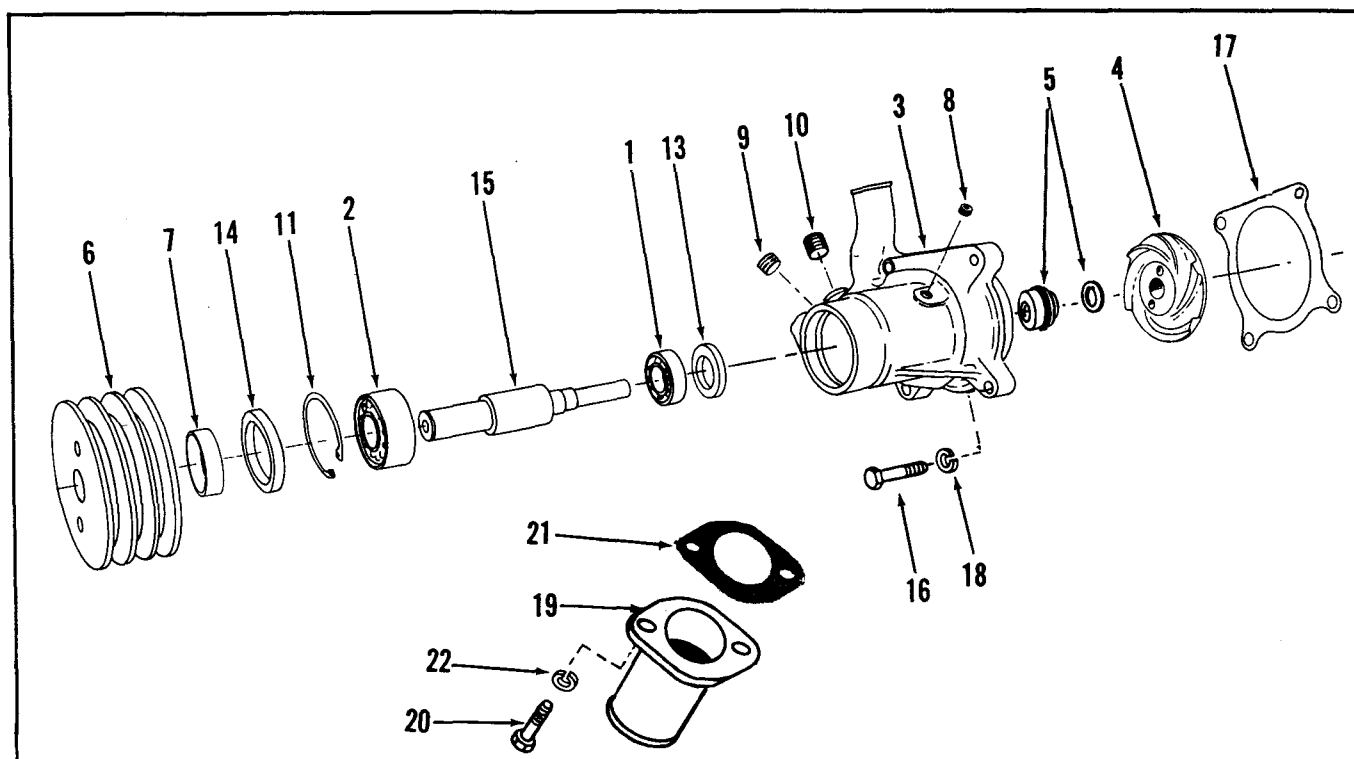
PART NUMBER	PART NAME	NO. REQ'D.	REF. NO.	PART NUMBER	PART NAME	NO. REQ'D.	REF. NO.
	LUBRICATING OIL BY-PASS FILTER						
159707	Filter, lubricating oil by-pass	1					
145664	Bracket, filter	2	1				
70188	Capscrew, coupling half	8	2				
70449	Capscrew	2	3				
256839	Cartridge	1	4				
3300947	Coupling, half with nuts	1	14				
3300948	Coupling, half	1	18				
159667	Cover	1	5				
70189	Lockwasher, bracket	8	6				
70194	Lockwasher, coupling half	2	19				
70299	Nut, mounting bracket	8	7				
164159	"O" ring, cover	1	8				
S-908	Plug, cover	1	9				
145665	Strap, mounting	2	10				
257221	Shell, filter	1	11				
157151	Decal, filter	1					
131911	Orifice plug (No. 6)	1	12				
139090	Plug, drain	1	13				
257218	Support, upper	1					
116029	"O" ring, support	1	15				
150037	Spring, hold down	1	16				
257216	Support, upper	1	17				
	Note: Not used on V-555 (Auto)						

PARTS INDENTED ARE INCLUDED IN THE PART UNDER WHICH THEY ARE INDENTED



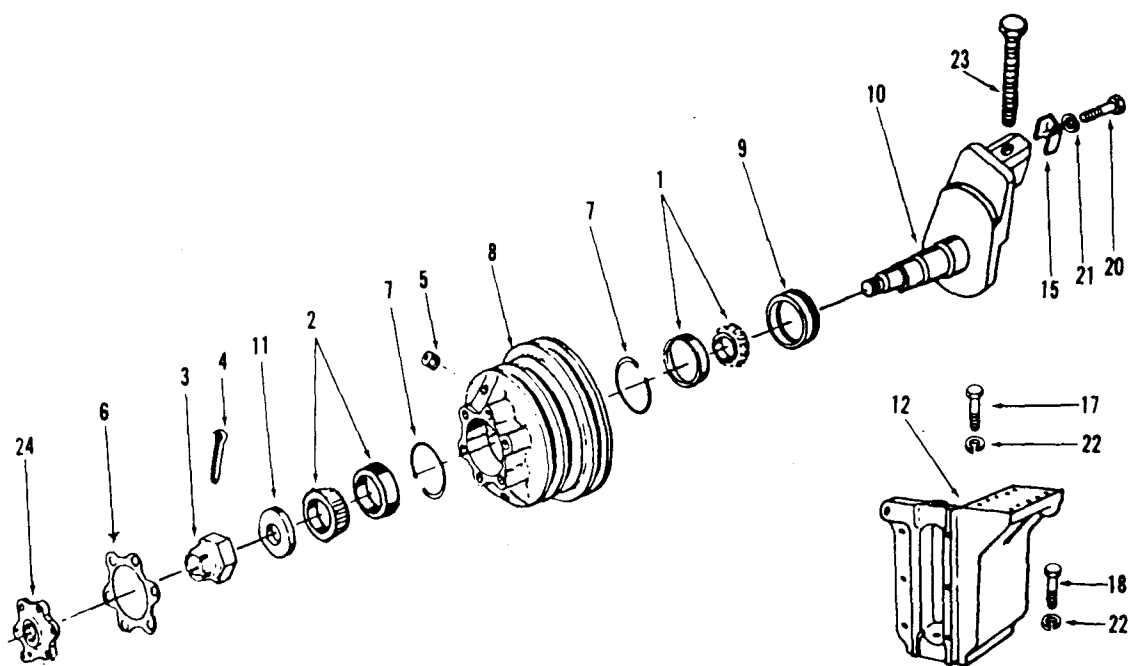
PART NUMBER	PART NAME	NO. REQ'D.	REF. NO.	PART NUMBER	PART NAME	NO. REQ'D.	REF. NO.
	LUBRICATING OIL FILTER				LUBRICATING OIL COOLER		
	All Models				All Models		
173368	Seal	1	1	AR-61125	Cooler, lubricating oil	1	
3300908	Assembly adaptor filter head	1	2	173287	Element	1	23
3302026	Filter spin-on (LF670SC)	1	3	554254	Housing, cooler	1	24
3302059	Capscrew, hex	1	4	216285	"O" ring	2	25
S-603	Lockwasher	1	5	142616	Ring, retaining	1	26
200861	Washer	1	6				
3300917	Seal	1	7				
AR-61154	Filter, head assembly	1			MOUNTING PARTS		
200819	Disc, by-pass valve	1	12				
S-962-E	Drain, cock	1	13	S-103-D	Capscrew	4	27
554255	Head, filter	1	14	108707	Capscrew	2	28
S-962	Plug, pipe	1	15	S-126	Capscrew	3	29
555601	Plug, pipe	1	16	554321	Gasket, cooler to filter	1	30
554281	Seat, by-pass valve	1	17	554320	Gasket, cooler to block	1	31
3275423	Spring, by-pass valve	1	18	S-604	Lockwasher	10	32
				S-126	Capscrew	1	
	MOUNTING PARTS						
108707	Capscrew	5	19				
S-126	Capscrew	2	20				
554319	Gasket	1	21				
S-604	Lockwasher	7	22				

PARTS INDENTED ARE INCLUDED IN THE PART UNDER WHICH THEY ARE INDENTED



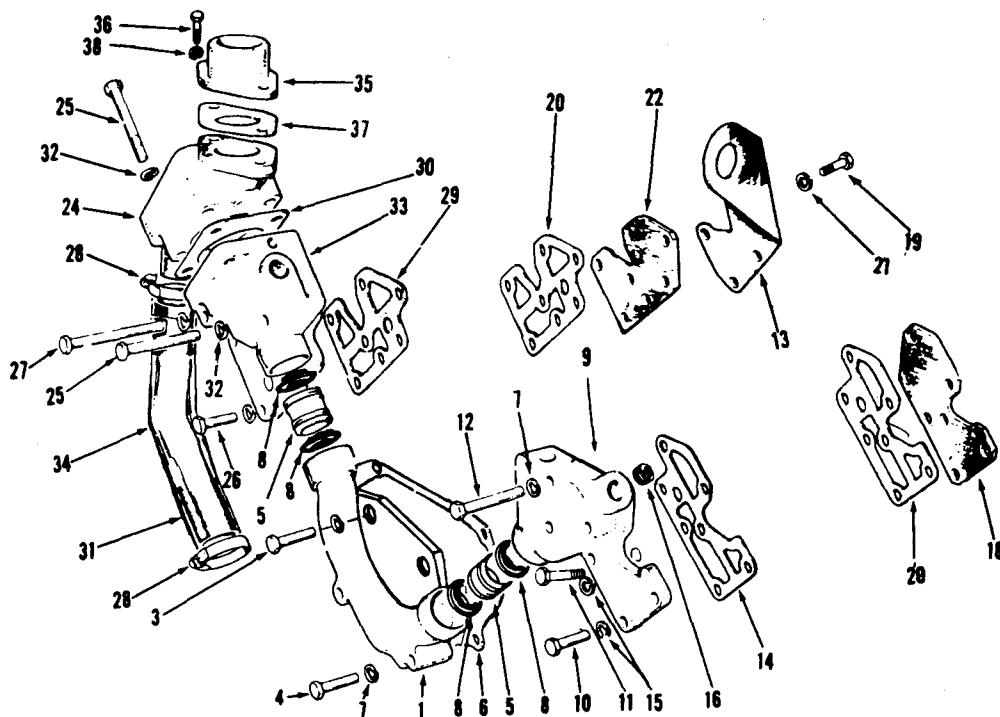
PART NUMBER	PART NAME	NO. REQ'D.	REF. NO.	PART NUMBER	PART NAME	NO. REQ'D.	REF. NO.
WATER PUMP				WATER PUMP REPAIR KIT			
All Models				All Models			
AR-61116	Pump, water	1		AR-61141	Kit, water pump repair	1	
S-1710	Bearing, ball	1	1	S-1710	Bearing, ball	1	1
S-16074	Bearing, ball	1	2	S-16074	Bearing, ball	1	2
553928	Body, water pump	1	3	AR-61117	Impeller, water pump	1	
AR-61117	Impeller, water pump	1		AR-12732	Seal and seat assembly	1	5
554438	Impeller, water pump	1	4	202789	Gasket, water pump	1	17
AR-12732	Seal and seat assembly	1	5	104038	Seal, oil	1	13
AR-61118	Pulley, water pump	1		106276	Seal, oil	1	14
202813	Pulley, water pump	1	6				
190398	Sleeve, wear	1	7	WATER INLET CONNECTION			
69901	Plug, pipe	2	8	All Models			
S-915-A	Plug, pipe	1	9	68270	Connection, water	1	19
S-995	Plug, pipe	1	10	S-112	Capscrew	2	20
S-16255	Ring, retaining	1	11	9221	Gasket, connection	1	21
104038	Seal, oil	1	13	S-604	Lockwasher	2	22
106276	Seal, oil	1	14				
202812	Shaft, water pump	1	15				
MOUNTING PARTS							
108707	Capscrew, water pump to block	4	16				
202789	Gasket, water pump	1	17				
S-604	Lockwasher	4	18				

PARTS INDENTED ARE INCLUDED IN THE PART UNDER WHICH THEY ARE INDENTED



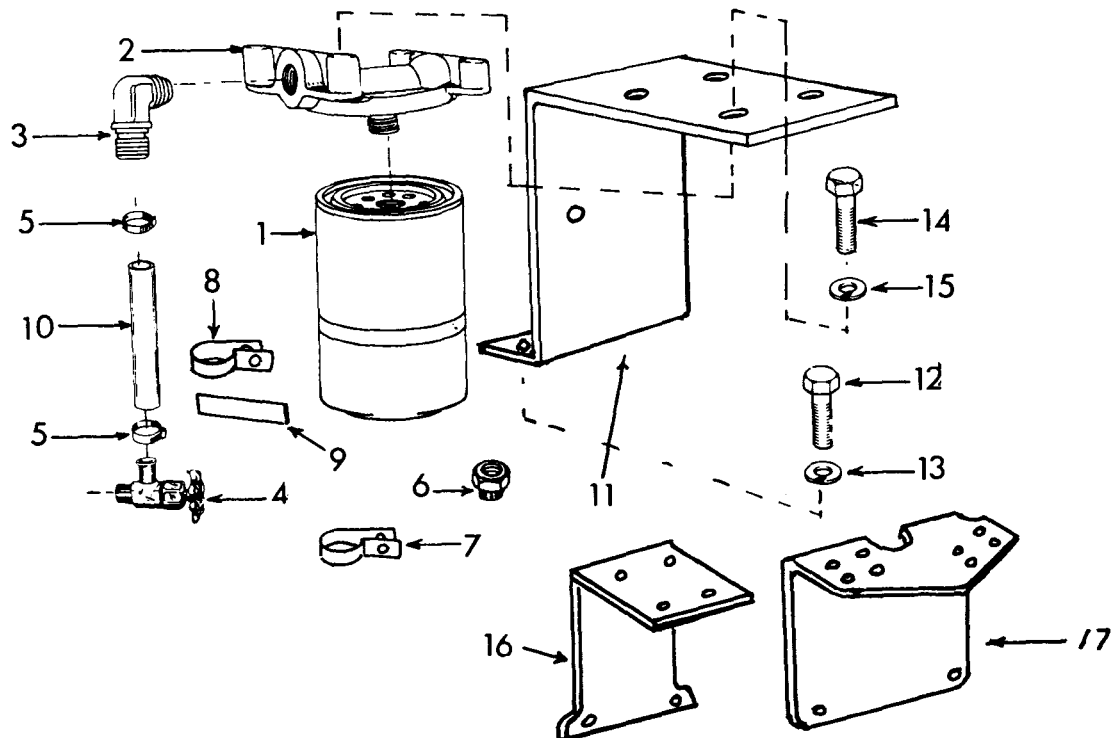
PART NUMBER	PART NAME	NO. REQ'D.	REF. NO.	PART NUMBER	PART NAME	NO. REQ'D.	REF. NO.
	FAN HUB				MOUNTING PARTS		
	All Models						
AR-61120	Hub, fan	1		182808	Belt, drive	3	
553712	Bearing, rear	1	1	182707	Clamp, adjusting	1	15
3001281	Bearing, front	1	2	555796	Capscrew, bracket to block	4	17
553817	Locknut, slotted	1	3	554613	Capscrew, bracket to block	2	18
S-507	Pin, cotter	1	4	554316	Capscrew, adjusting clamp	2	20
69901	Plug hex	2	5	153411	Washer, hardened	2	21
556457	Gasket, fan hub	1	6	9948	Screw, adjusting	1	23
553714	Retainer	2	7	556629	Pilot, fan	1	24
553709	Pulley, fan hub	1	8				
200307	Seal, oil	1	9				
553838	Shaft, fan hub	1	10				
551498	Washer, clamp	1	11				
555444	Bracket, fan hub	1	12				

PARTS INDENTED ARE INCLUDED IN THE PART UNDER WHICH THEY ARE INDENTED



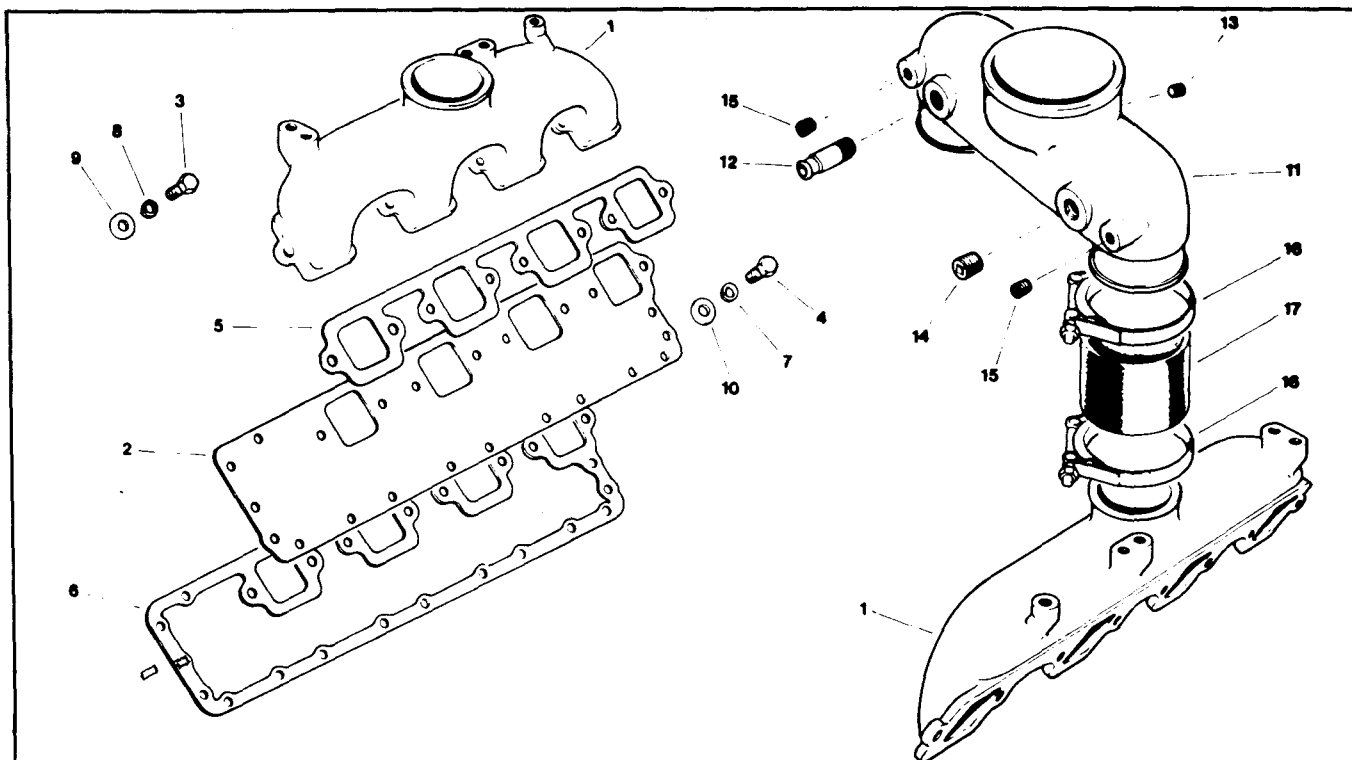
PART NUMBER	PART NAME	NO. REQ'D.	REF. NO.	PART NUMBER	PART NAME	NO. REQ'D.	REF. NO.
WATER CROSSOVER				LEFT BANK REAR			
All Models							
555190	Crossover, water (cam cover)	1	1	152398	Plate, cylinder head cover	1	18
S-103-D	Capscrew, cover to block	4	3	S-109	Capscrew	7	19
S-104	Capscrew, cover to block	2	4	157290	Gasket, cylinder head cover	1	20
555196	Connection, water transfer	2	5	S-604	Lockwasher	7	21
550164	Gasket, cover	1	6	553310	Plate, cylinder head cover (VT-555 Auto)	1	18
S-604	Lockwasher, cover to block	6	7	S-1005-A	Elbow (VT-555 Auto)	1	
555198	Bush sealing	4	8				
LEFT BANK FRONT				THERMOSTAT HOUSING			
All Models				All Models			
555192	Cover, cylinder head (water connection)	1	9	555256	Housing, thermostat	1	24
168919	Bracket, engine lifting	1	13	S-163	Capscrew	5	25
S-103-D	Capscrew, cover, lifting bracket	1	10	S-103-D	Capscrew	5	26
108707	Capscrew	3	11	S-199-A	Capscrew	1	27
S-126	Capscrew, cover to cylinder head	3	12	550547	Clamps, hose	2	28
157290	Gasket, cylinder head cover	1	14	157290	Gasket, thermostat support	1	29
S-604	Lockwasher	7	15	553916	Gasket, thermostat housing to support	1	30
S-915-A	Plug, pipe	2	16	3275391	Hose	2	31
S-962-E	Drain tap	1		S-604	Lockwasher	11	32
217632	Plug, pipe	1		S-908	Plug pipe	3	
				69901	Plug pipe	1	
				S-915-A	Plug pipe (C Only)	1	16
				186780	Seal	1	
				555199	Support, thermostat housing	1	33
				204586	Thermostat	1	
553513	Plate, cylinder head cover (V-555 Auto)	1	22				
152398	Plate, cylinder head cover	1		CONNECTION WATER OUTLET			
168919	Bracket, engine lifting	1	13	All Models			
S-109	Capscrew	7	19	555348	Connection, water outlet	1	35
157290	Gasket	1	20	S-112	Capscrew	2	36
S-604	Lockwasher	7	21	9221	Gasket	1	37
S-1005-A	Elbow (V-555 Auto Only)	1		S-604	Lockwasher	2	38

PARTS INDENTED ARE INCLUDED IN THE PART UNDER WHICH THEY ARE INDENTED



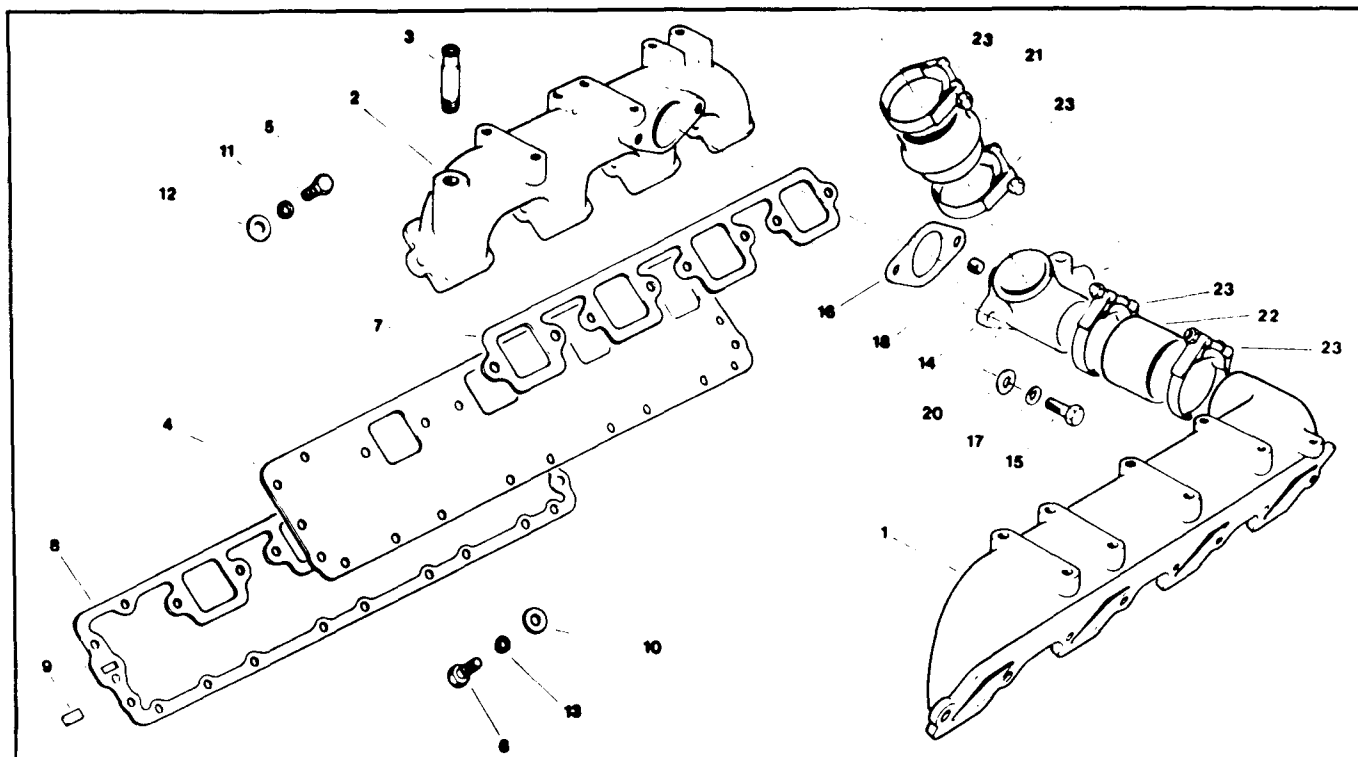
PART NUMBER	PART NAME	NO. REQ'D.	REF. NO.	PART NUMBER	PART NAME	NO. REQ'D.	REF. NO.
	WATER FILTER				MOUNTING PARTS		
	V, VT-555 Automotive				V-555 Automotive		
258859	Assembly, water filter	1		179903	Connector	2	3
299082	Element, pre-charge (WF-2012)	1	1	555439	Bracket, water filter	1	17
204163	Head	1	2	550825	Hose clamp	2	8
299080	Element, service (WF-2010)	1	1	550468	Rubber sleeve	4	9
	V, VT-555 Construction			S-118-A	Capscrew	1	
				S-600	Lockwasher	1	
				S-224	Nut	1	
				S-103-D	Capscrew	4	14
258264	Assembly, water filter	1		S-604	Lockwasher	5	15
299083	Element, pre-charge (WF-2013)	1	1	S-115	Capscrew	2	12
204163	Head	1	2	S-605	Lockwasher	2	13
299080	Element, service (WF-2010)	1	1	179920	Hose, thermostat housing to filter	1	10
	MOUNTING PARTS			179926	Hose, filter to cylinder head	1	10
	VT-555 Auto and Construction			550692	Clip	2	7
				S-103-D	Capscrew	1	
				179901	Valve, water shut-off	2	4
				551554	Hose, clamp	4	5
556744	Bracket, water filter	1	11		MOUNTING PARTS		
S-112	Capscrew	2	12		V-555 Construction		
S-604	Lockwasher	2	13				
S-103-D	Capscrew	4	14	556742	Bracket, water filter	1	16
S-604	Lockwasher	4	15	179903	Connection	2	3
179903	Connector	2	3	179921	Hose, filter to thermostat housing		
551554	Hose clamp	4	5		support	1	10
179916	Hose, filter to thermostat housing			551554	Hose clamp	2	5
	support	1	10	179901	Valve, water shut-off	2	4
179919	Coolant hose thermostat housing	1	10	S-103-D	Capscrew	4	14
	filter	2	4	S-604	Lockwasher	4	15
179901	Valve water shut-off	1	7	S-115	Capscrew	2	12
550692	Clip	1		S-605	Lockwasher	2	13
68368-B	Spacer	1		550692	Clip	2	7
S-105	Capscrew	1		179927	Hose, filter to cylinder head	1	10
S-973	Elbow, street						

PARTS INDENTED ARE INCLUDED IN THE PART UNDER WHICH THEY ARE INDENTED



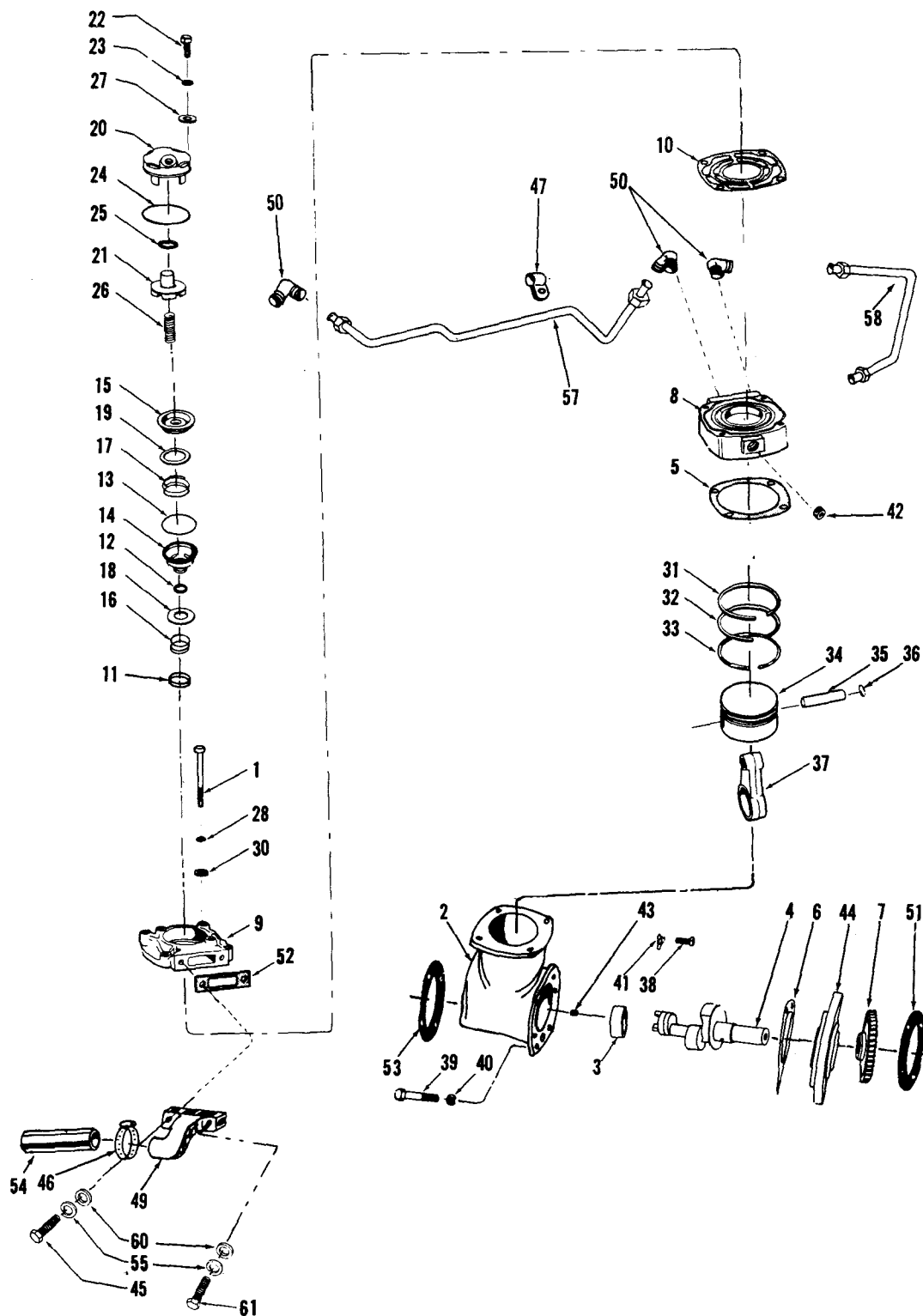
PART NUMBER	PART NAME	NO. REQ'D.	REF. NO.	PART NUMBER	PART NAME	NO. REQ'D.	REF. NO.
	AIR INTAKE MANIFOLD V-555				CONNECTION, AIR CROSSOVER V-555		
556066	Manifold, air intake	2	1	556155	Connection, air crossover	1	11
202788	Plate, push rod cover	2	2				
	MOUNTING PARTS				MOUNTING PARTS		
					Auto Application		
S-103-D	Capscrew, manifold to plate	16	3	S-932-B	Nipple, air intake connection	1	12
S-110	Capscrew, plate to block	30	4	69901	Plug pipe	1	13
156996	Gasket, intake manifold	2	5	S-995	Plug pipe	1	14
AR-62292	Gasket, plate	2	6	125740	Tee, bolt hose clamp	4	16
				556241	Hose, man/crossover	2	17
S-605	Lockwasher	30	7	S-910-B	Plug pipe	2	15
S-604	Lockwasher	16	8				
S-602	Washer, plain, manifold	16	9		MOUNTING PARTS		
S-626	Washer, plain, manifold	30	10		Construction Application		
					Same as Auto except:		
				OMIT:			
				S-932-B	Nipple, air intake connection	1	12
				ADD:			
				S-995	Plug pipe	1	12

PARTS INDENTED ARE INCLUDED IN THE PART UNDER WHICH THEY ARE INDENTED



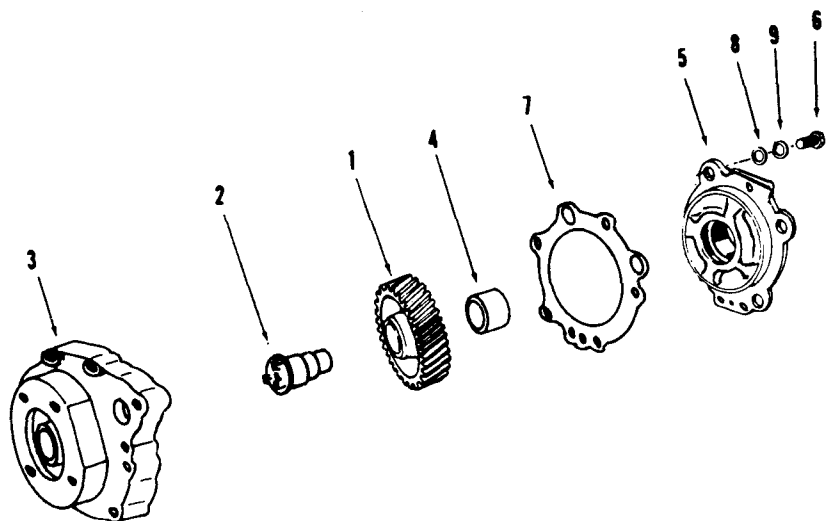
PART NUMBER	PART NAME	NO. REQ'D.	REF. NO.	PART NUMBER	PART NAME	NO. REQ'D.	REF. NO.
	AIR INTAKE MANIFOLD				CONNECTION, AIR CROSSOVER		
	VT-555				VT-555		
211279	Manifold, air intake (R.B.)	1	1	211272	Connection, air crossover	1	14
211281	Manifold, air intake (L.B.)	1	2				
S-932-B	Nipple, air intake connection (Auto Only)	1	3		MOUNTING PARTS		
202788	Plate, push rod cover	2	4	108707	Capscrew, connection	2	15
S-995	Plug, pipe (Construction Only)	1		191116	Gasket, air	1	16
	MOUNTING PARTS			S-604	Lockwasher	2	17
S-103-D	Capscrew manifold to plate	16	5	S-910-B	Plug pipe	1	18
S-110	Capscrew plate to block	30	6	S-602	Washer	2	20
156996	Gasket, manifold intake	2	7	211280	Hose turbo	1	21
AR-62292	Gasket, push tube cover	2		208491	Hose	1	22
555714	Gasket, push tube cover	2	8	208326	Clamp, hose	4	23
556371	Insert, push tube cover	4	9		COLD START		
S-605	Lockwasher	30	10		V, VT-555 Construction		
S-604	Lockwasher	16	11				
S-602	Washer, plain manifold	16	12	259387	Cold start aid assembly	1	
S-626	Washer, plain manifold	30	13				

PARTS INDENTED ARE INCLUDED IN THE PART UNDER WHICH THEY ARE INDENTED



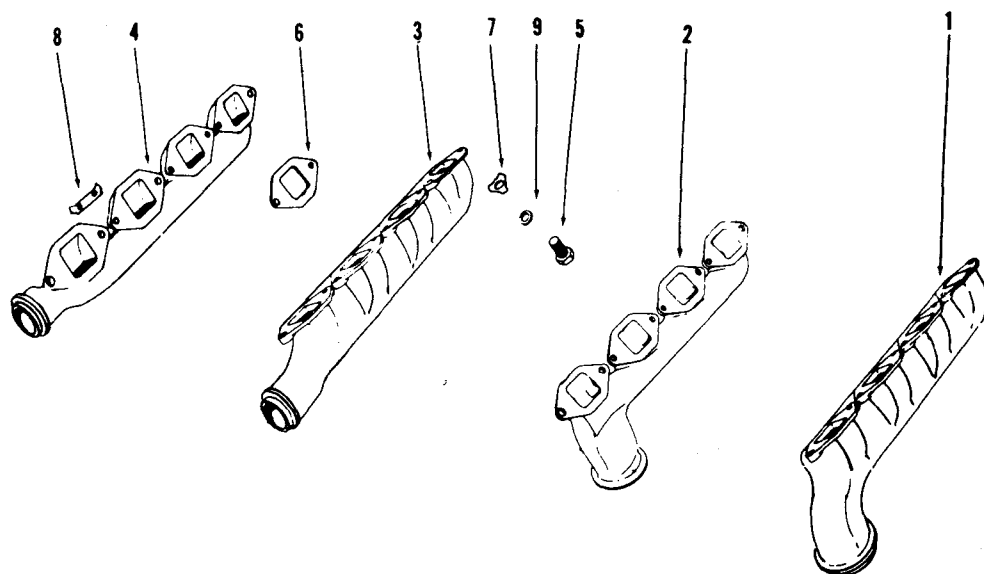
PART NUMBER	PART NAME	NO. REQ'D.	REF. NO.	PART NUMBER	PART NAME	NO. REQ'D.	REF. NO.
	AIR COMPRESSOR				MOUNTING PARTS		
	Automotive Application				V-555		
AR-45748	Compressor, air	1		S-111	Capscrew, air connection	1	45
S-155-A	Capscrew, head to crankcase	4	1	550788	Clamp, hose	2	46
BM-98685	Crankcase, compressor (176025)	1	2	554013	Clamp	1	47
147610	Bushing, crankshaft	1	3	550037	Connection, air	1	49
202780	Crankshaft, compressor	1	4	S-1005-A	Elbow, flexible hose	1	50
154018	Gasket, head to crankcase	1	5	203074	Gasket, support	1	51
176027	Gasket, support	1	6	157911	Gasket, air connection	1	52
202225	Gear, compressor drive	1	7	200817	Gasket, fuel pump to compressor	1	53
AR-73938	Head assembly	1		556330	Hose	1	54
218793	Head, air compressor	1	8	S-605	Lockwasher	2	55
153964	Cover, air compressor head	1	9	S-921-D	Pipe, bushing	1	
154996	Gasket	1	10	556636	Tube, water inlet	1	57
183429	Wearplate	1	11	S-1005-A	Elbow	2	
AR-73075	Intake and exhaust valve assembly	1		S-1004-A	Nut	2	
128085	"O" ring	1	12	S-1003-A	Sleeve	2	
128086	"O" ring	1	13	554801	Tube, water outlet	1	58
144714	Seat, exhaust valve	1	14	S-1002-A	Connection	1	
145028	Seat, intake valve	1	15	S-1004-A	Nut	2	
128080	Spring, exhaust valve	1	16	S-1003-A	Sleeve	2	
190334	Spring, intake valve	1	17	S-626	Washer, plain	2	60
127940	Valve, exhaust	1	18	S-604	Lockwasher	1	
144948	Valve, intake	1	19	S-109	Capscrew	1	
AR-73925	Unloading valve assembly	1		203277	Bracket, air compressor	1	
153966	Body, unloader valve	1	20	S-112	Capscrew	2	
191037	Cap, unloader	1	21	S-602	Washer	3	
S-107	Capscrew	2	22	S-143-B	Capscrew	1	
S-605	Lockwasher	2	23	S-155	Capscrew	1	61
128086	"O" ring	1	24	109859	Spider coupling	1	
127936	Seal, plunger	1	25	217632	Plug, pipe	1	
217557	Spring, unloader valve	1	26	S-610	Lockwasher, F/P mtg	4	
109557	Washer	2	27	69324	Washer, F/P mtg	4	
S-605	Lockwasher, head to crankcase	4	28	206326	Capscrew, F/P mtg	4	
105375	Nameplate, serial number	1					
S-2267	Screw, nameplate	2					
S-626	Washer, plain	4	30				
AR-73350	Ring set, compressor (Std.)	1					
650330	Ring, compression	1	31				
187350	Ring, compression	1	32				
180810	Ring, oil	1	33				
BM-77410	Piston assembly (Std.)	1			VT-555		
165430	Piston, air compressor	1	34		Same as V-555 except:		
119810	Pin, piston	1	35	OMIT:			
119859	Ring, snap	2	36				
176023	Rod, connecting	1	37	550037	Connection, air	1	49
S-112	Capscrew	4	38	S-155	Capscrew	1	45
556192	Capscrew	2	39	556330	Hose	1	54
S-604	Lockwasher	2	40	556636	Tube, water inlet	1	57
554210	Lockplate	4	41	S-1005-A	Elbow, flexible hose	1	50
S-915-A	Plug, pipe	1	42	554801	Tube, water outlet	1	58
217631	Plug, pipe	1	43	S-921-D	Pipe bushing	1	
202273	Support	1	44	S-109	Capscrew	1	
650792	Plug, pipe (Crankshaft)	1					
				ADD:			
				217302	Hose, compressor air inlet	1	54
				S-111	Capscrew	2	45
				555269	Connection, air	1	49
				3275343	Tube, water inlet	1	57
				S-1005-A	Elbow, flexible hose	3	50
				556172	Tube, water outlet	1	58
				S-117	Capscrew	1	

PARTS INDENTED ARE INCLUDED IN THE PART UNDER WHICH THEY ARE INDENTED



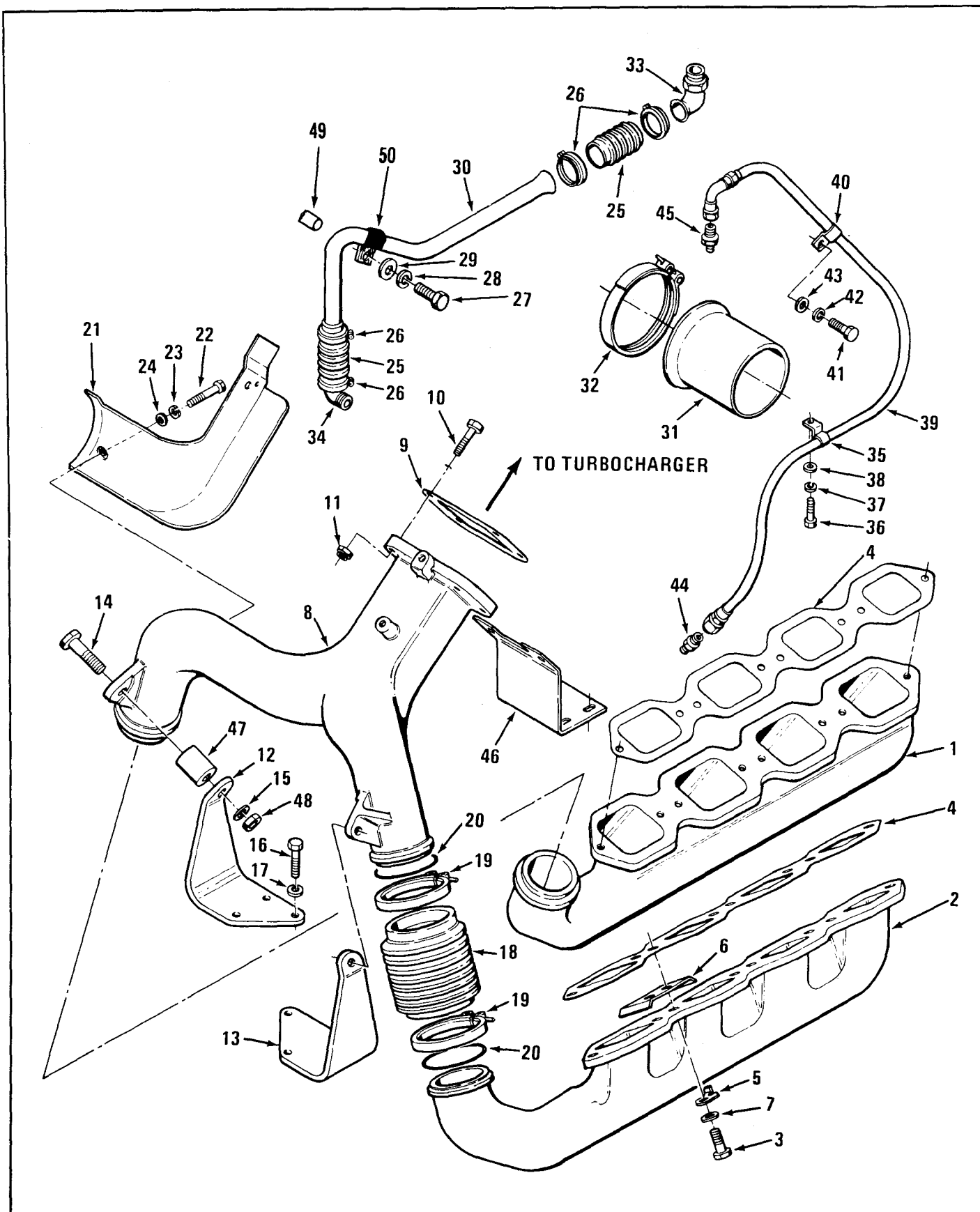
PART NUMBER	PART NAME	NO. REQ'D.	REF. NO.	PART NUMBER	PART NAME	NO. REQ'D.	REF. NO.
FUEL PUMP DRIVE							
AR-61166	Drive, fuel pump and support	1					
202225	Gear, drive	1	1				
203391	Shaft, drive	1	2				
556608	Support, fuel pump	1	3				
217631	Plug, pipe	1					
AR-61176	Cover and bushing assembly	1					
202840	Bushing, shaft	1	4				
554521	Cover, gear housing	1	5				
MOUNTING PARTS							
S-163	Capscrew	6	6				
203036	Gasket	1	7				
S-604	Lockwasher	6	8				
S-602	Washer, plain	6	9				

PARTS INDENTED ARE INCLUDED IN THE PART UNDER WHICH THEY ARE INDENTED



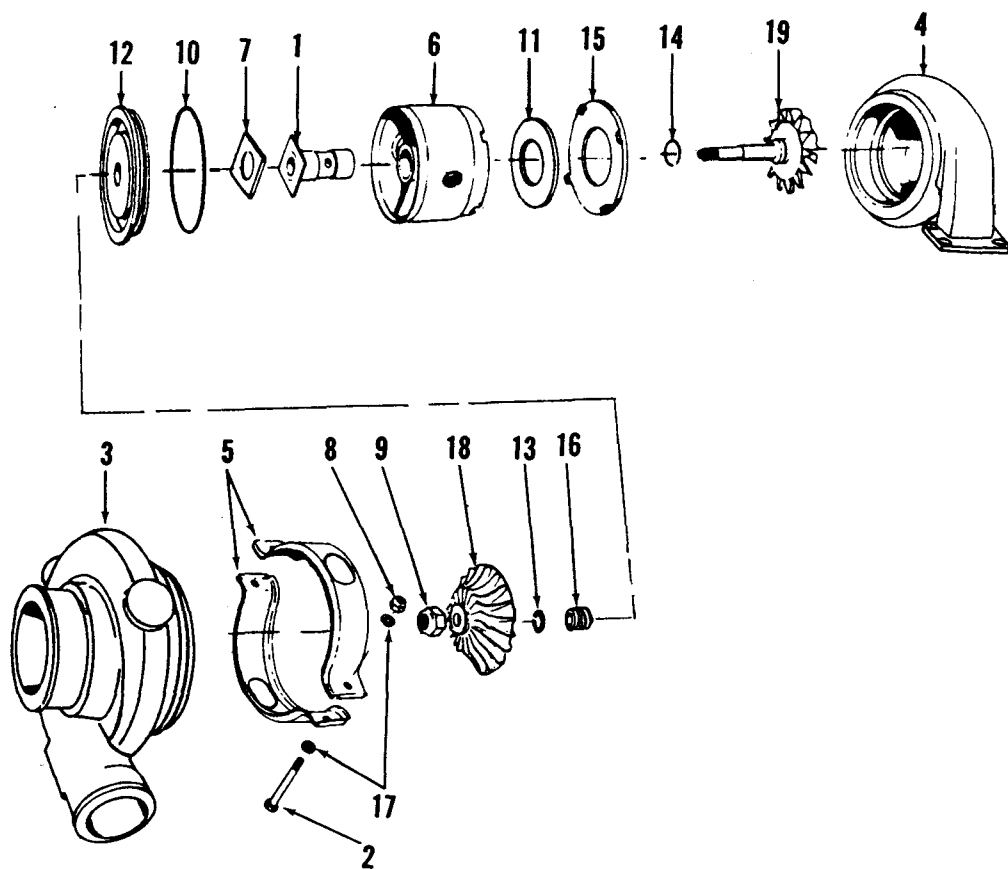
PART NUMBER	PART NAME	NO. REQ'D.	REF. NO.	PART NUMBER	PART NAME	NO. REQ'D.	REF. NO.
	EXHAUST MANIFOLD V-555						
201693	Manifold, exhaust (L.B.) Auto	1	1				
554365	Manifold, exhaust (R.B.) Auto	1	2				
203665	Manifold, exhaust (L.B.) Construction	1	3				
554217	Manifold, exhaust (R.B.) Construction	1	4				
	MOUNTING PARTS						
108707	Capscrew	16	5				
556355	Gasket, manifold	2	6				
556711	Lockplate	6	7				
551108	Lockplate	6	8				
556710	Spacer	16	9				

PARTS INDENTED ARE INCLUDED IN THE PART UNDER WHICH THEY ARE INDENTED



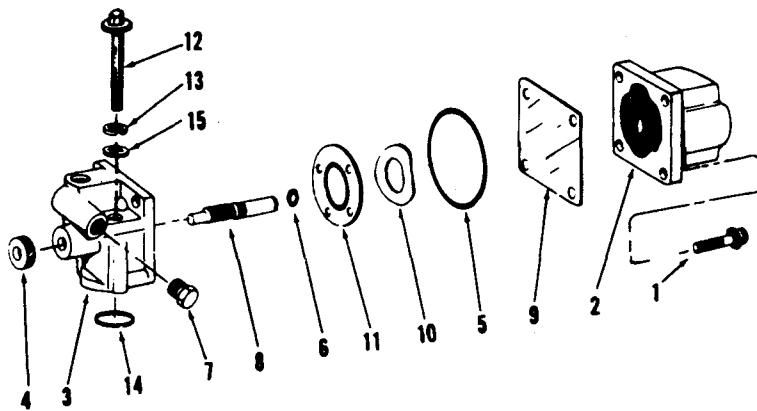
PART NUMBER	PART NAME	NO. REQ'D.	REF. NO.	PART NUMBER	PART NAME	NO. REQ'D.	REF. NO.
	EXHAUST MANIFOLD VT-555				TOP MOUNT TURBO DRAIN TUBE		
556830	Manifold, exhaust (L.B.)	1	1	556150	Hose connection	1	25
556831	Manifold, exhaust (R.B.)	1	2	556148	Hose clip	2	26
				S-119	Capscrew	1	27
				S-605	Lockwasher	1	28
	MOUNTING PARTS			S-626	Washer, plain	1	29
				3275346	Tube, turbo oil drain (Construction)	A/R	30
S-120	Capscrew	16	3	3275347	Tube, turbo oil drain (Auto)	A/R	30
556355	Gasket, manifold	2	4	200759	Adapter, exhaust manifold (Auto)	1	31
556711	Lockplate	4	5	115774	Clamp, air inlet (Auto)	1	32
551108	Lockplate	6	6	556061	Connection (Turbo)	1	33
68368-B	Spacer	16	7	3275101	Connection (Gear housing)	1	34
				65297	Spacer	1	49
				3275471	Clip turbo	1	50
	TOP MOUNT COLLECTOR				TOP MOUNT TURBO OIL SUPPLY TUBE		
556829	Collector, exhaust	1	8				
	MOUNTING PARTS			550299	Hose clip	1	35
				S-181-B	Capscrew	1	36
190849	Gasket, exhaust collector	1	9	S-604	Lockwasher	1	37
S-120	Capscrew	4	10	S-602	Washer, plain	1	38
70276	Locknut	4	11	209960	Hose	1	39
556834	Support, collector (L.B.)	1	12	3006559	Hose clip	1	40
556833	Support, collector (R.B.)	1	13	S-112	Capscrew	1	41
S-130	Capscrew	2	14	S-604	Lockwasher	1	42
S-608	Lockwasher	2	15	S-602	Washer, plain	1	43
103009	Capscrew	6	16	S-1039-A	Adapter, elbow	1	44
S-610	Lockwasher	6	17	208668	Adapter, oil feed	1	45
556832	Connection	2	18		TOP MOUNT TURBO MOUNTING		
183670	Clamp, "V" bank	4	19				
556847	Sealing ring	4	20	211273	Bracket, turbo	1	46
3275072	Spacer	2	47	S-112	Capscrew	3	
108027	Locknut	2	48	S-602	Washer, plain	4	
				S-604	Lockwasher	4	
	TOP MOUNT HEAT SHIELD			S-103-D	Capscrew	1	
556103	Heat shield	1	21				
556455	Capscrew	2	22				
S-600	Lockwasher	2	23				
146159	Washer, plain	2	24				

PARTS INDENTED ARE INCLUDED IN THE PART UNDER WHICH THEY ARE INDENTED

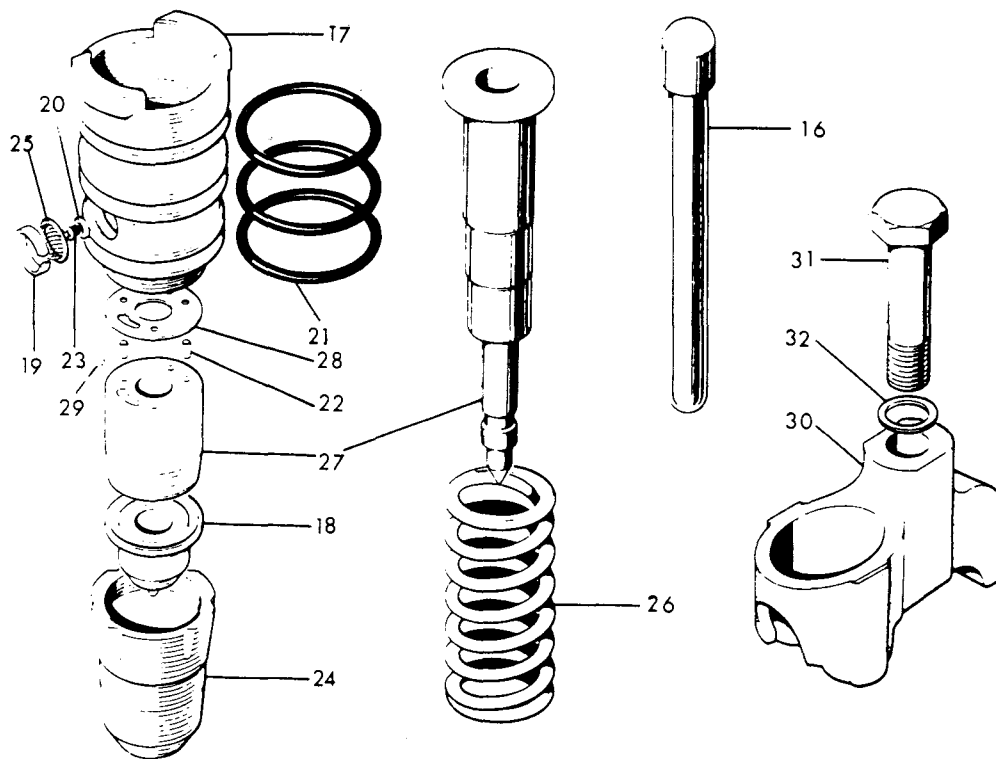


PART NUMBER	PART NAME	NO. REQ'D.	REF. NO.	PART NUMBER	PART NAME	NO. REQ'D.	REF. NO.
	TURBOCHARGER						
	VT-555						
AR-12639	Turbocharger	1					
156420	Bearing	1	1				
194010	Capscrew	2	2				
214649	Casing, compressor	1	3				
214651	Casing, turbine	1	4				
156416	Clamp, "V" band	2	5				
202376	Housing, bearing	1	6				
170510	Bearing, insert	1	7				
128936	Nameplate	1					
167299	Nut, clamp	2	8				
S-222-A	Nut	1	9				
202456	"O" ring	1	10				
202377	Packing, bearing housing	1	11				
216804	Plate, oil seal	1	12				
S-2286	Screw	4					
156444	Seal, ring	1	13				
195840	Seal, ring	1	14				
171570	Shield, heat	1	15				
216802	Sleeve	1	16				
S-631	Washer, plain	4	17				
216792	Wheel, compressor	1	18				
AR-10059	Wheel and shaft	1	19				
	REPAIR KIT						
3003834	Kit, repair	1					
S-222A	Nut	1					
S-631	Washer	4					
156444	Piston ring seal	1					
167299	Nut	2					
170510	Bearing insert	1					
194010	Capscrew	2					
195840	Seal ring	2					
202377	Packing insulation	1					
202456	"O" ring	1					
983361-B	Decal	1					
156420	Bearing	1					

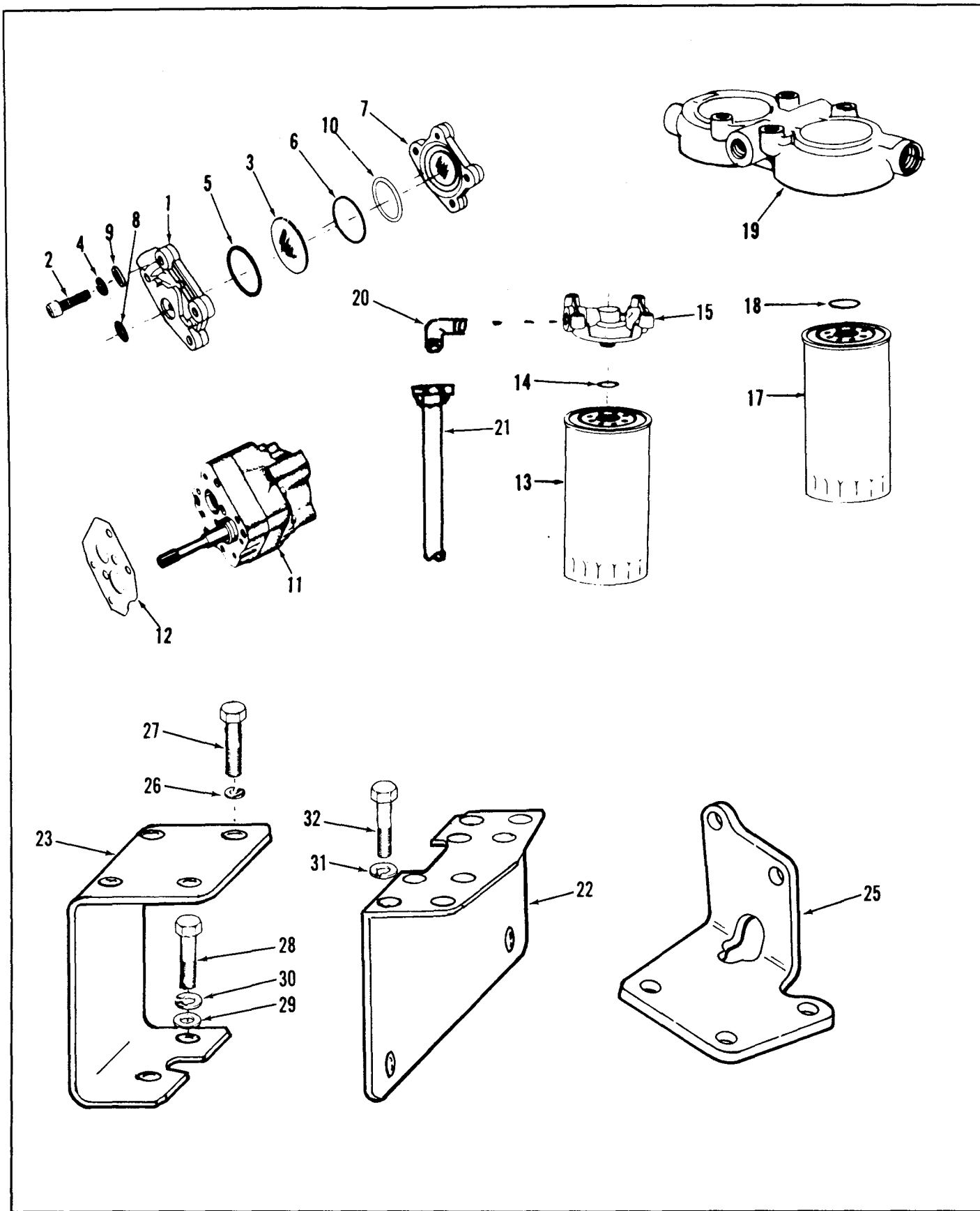
PARTS INDENTED ARE INCLUDED IN THE PART UNDER WHICH THEY ARE INDENTED



SHUT DOWN VALVE



P.T.D. INJECTOR



PART NUMBER	PART NAME	NO. REQ'D.	REF. NO.	PART NUMBER	PART NAME	NO. REQ'D.	REF. NO.
	PT FUEL SYSTEM				C Applications		
	Each Cummins PT Fuel Pump is calibrated to obtain the best performance and fuel economy for your engine. Your Cummins Distributor or Dealer has the special tools required for complete rebuild and calibration. Caution: Do not disturb the fuel pressure settings or the throttle screw settings, as serious damage to your engine may result.				All Models		
				AR-13274	Filter, fuel	1	
				156172	Cartridge	2	17
				255622	Gasket, cover	2	18
				212013	Head, fuel filter	1	19
				129859	Elbow, fuel filter	2	20
					FUEL FILTER MOUNTING PARTS		
					V-555 Auto		
				S-604	Lockwasher	4	31
				S-103-D	Capscrew	4	32
				AS1001800SS	Hose	1	21
				555439	Bracket fuel filter and corrosion resistor	1	22
	FUEL PUMP DAMPER				VT-555 Auto		
	All Models						
BM-76340	Damper, fuel pump	1					
153336	Body damper	1	1				
S-105-C	Capscrew	2	2				
202897	Diaphragm	1	3				
S-600	Lockwasher	2	4	S-604	Lockwasher	4	26
139988	"O" ring	1	5	S-602	Washer	3	29
100099	"O" ring	1	6	S-112	Capscrew	3	28
153338	Plate, damper	1	7	AS1002400SS	Hose	1	21
151900	Seal	1	8	S-103-D	Capscrew	4	27
70704	Washer	2	9	S-604	Lockwasher	3	30
160514	Washer, nylon	1	10	556283	Fuel filter bracket	1	23
	GEAR PUMP				C Applications		
	All Models						
				AS1003300SS	Hose (V-555)	1	21
				S-120	Capscrew	3	
BM-97497	Pump, gear	1	11	S-103-D	Capscrew	4	
210647	Gasket	1	12	S-604	Lockwasher	7	
	FUEL FILTER			3006640	Clip hose	2	
	V-555 Auto			68368-B	Spacer	1	
154711	Filter, fuel	1		556480	Fuel Filter bracket	1	25
154709	Cartridge	1	13	AS1003600SS	Hose (VT-555)	1	
255622	Gasket, cover	1	14				
142784	Head	1	15				
129859	Elbow, fuel filter	2	20				
129866	Adapter	1					
	VT-555 Auto						
	Same as above except:						
OMIT:							
129866	Adapter	1					
ADD:							
129859	Elbow	1					

PARTS INDENTED ARE INCLUDED IN THE PART UNDER WHICH THEY ARE INDENTED

PART NUMBER	PART NAME	NO. REQ'D.	REF. NO.	PART NUMBER	PART NAME	NO. REQ'D.	REF. NO.
	STANDARD FLYWHEEL, RING GEAR AND HOUSING				STANDARD FLYWHEEL, RING GEAR AND HOUSING		
	Automotive				Construction		
AR-61156	Flywheel and ring gear assembly	1		AR-61144	Flywheel and ring gear assembly	1	
(208183)	Flywheel	1		(203066)	Flywheel	1	
4797	Ring gear, flywheel	1		4797	Ring gear, flywheel	1	
3275169	Flywheel housing (VT-555)	1		556345	Flywheel housing (VT-555)	1	
3275159	Flywheel housing (V-555)	1		555732	Flywheel housing (V-555)	1	
	MOUNTING PARTS				MOUNTING PARTS		
553808	Capscrew, flywheel to adapter	8		553808	Capscrew, flywheel to adapter	8	
S-175	Capscrew, flywheel housing	4		S-106	Capscrew	2	
106289	Capscrew, flywheel housing	7		S-150	Capscrew, flywheel to housing	9	
203310	Plain washer	13		S-608	Lockwasher	13	
69562	Dowel, flywheel housing to block	2		69562	Dowel, flywheel housing to block	2	
556346	Seal, dust	1		145601	"O" ring	1	
554932	Washer	8		3275255	"O" ring seal	9	
552133	Cover, vent	2		554932	Washer	8	
S-188-C	Capscrew, cover vent	4		202184	Adapter, flywheel to crankshaft	1	
S-600	Lockwasher, cover vent	4		555965	Dowel, adapter to flywheel	1	
146159	Flat washer, cover vent	4		554316	Capscrew, adapter to crankshaft	8	
202184	Adapter, flywheel to crankshaft	1		203060	Cup, grease, retainer	1	
555965	Dowel, adapter to flywheel	1		172693	Gasket	1	
554316	Capscrew, adapter to crankshaft	8		151249	Cover plate	1	
203060	Cup, grease, retainer	1		182459	Gasket	1	
172693	Gasket	1		S-604	Lockwasher	4	
S-113	Capscrew	2		S-112	Capscrew	4	
108604	Capscrew	2		108601	Capscrew	2	
S-150	Capscrew	2		S-113	Capscrew	2	
				556346	Seal, dust	1	
	OPTIONAL OVERSIZES				OPTIONAL OVERSIZES		
104469	Dowel (0.0625")	A/R		104469	Dowel (0.0625")	A/R	
104470	Dowel (0.1250")	A/R		104470	Dowel (0.1250")	A/R	

PARTS INDENTED ARE INCLUDED IN THE PART UNDER WHICH THEY ARE INDENTED

PART NUMBER	PART NAME	NO. REQ'D.	REF. NO.	PART NUMBER	PART NAME	NO. REQ'D.	REF. NO.
	ELECTRICAL EQUIPMENT				VT-555		
	Construction Only						
204559	Alternator 24V 30AMP	1		554794	Tube assembly	1	
554999	Pulley, alternator	1		S-1003-1	Connector, male	2	
204561	Regulator 24V	1		555079	Clip	2	
				S-1006-1	Tee piece	1	
				554793	Tube assembly	1	
				556539	Clip	3	
				551394	Clip	1	
	MOUNTING PARTS			114850	Spacer	2	
178453	Belt, alternator	2		554013	Clip	2	
556778	Bracket, alternator	1		S-110	Capscrew	1	
S-112	Capscrew	4		S-626	Flat washer	1	
S-145	Capscrew, link to alternator	2		S-605	Lockwasher	1	
555381	Link, adjusting	1		68368-B	Spacer	2	
S-604	Lockwasher	4		185347	Elbow	1	
554194	Washer	4		148376	Connection	1	
S-158-C	Capscrew	1		65297	Spacer instrument panel	2	
555500	Nut huglock	1		3275344	Fuel drain tube	1	
S-608	Lockwasher	1		550291	Nipple	1	
				556170	Elbow drain, 90 deg.	1	
				S-1047-A	Elbow	1	
	STARTING MOTOR			S-917	Tee pipe	1	
	Construction only			S-956-D	Elbow	1	
				556520	Tube, fuel supply (C)	1	
173006	Motor, starting	1		AS0402700SS	Hose, fuel drain (C)	1	
158250	Capscrew	3		556173	Tube, fuel supply (Auto)	1	
556462	Lockwasher	3		AS0403000SS	Hose, fuel drain (Auto)	1	
114123	Gasket	1					
	FUEL TUBING						
	V-555						
S-1003-1	Connector male	1					
554794	Fuel tube	1					
556539	Clip	3					
S-1006-1	Tee piece	1					
554793	Fuel tube	1					
S-1003-1	Connector male	1					
553057	Connector male	1					
555769	Tube, fuel drain	1					
556085	Clip tube	1					
554011	Cross pipe	1					
69187	Nipple	1					
550475	Adapter	1					
43765-A	Elbow	1					
151394	Clip	1					
114850	Spacer	1					
554013	Tube clip	1					
114850	Spacer	1					
62087	Spacer, instrument panel	1					
556173	Fuel tube (Auto)	1					
556520	Fuel tube (C)	1					
AS0402700SS	Hose (C)	1					
AS0403000SS	Hose (Auto)	1					

PARTS INDENTED ARE INCLUDED IN THE PART UNDER WHICH THEY ARE INDENTED

PART NUMBER	PART NAME	NO. REQ'D.	REF. NO.	PART NUMBER	PART NAME	NO. REQ'D.	REF. NO.
	ENGINE GASKET SET				AIR COMPRESSOR GASKET SET		
AR-61440	Gasket, set engine	1		AR-73308	Gasket set, compressor	1	
555102	Gasket, water header	1		154996	Gasket, cover to head	1	
167802	Gasket, water header	1		127936	Seal, underloader valve plunger	1	
167800	Gasket, water header	1		128086	"O" ring	2	
3010459	Seal, crankshaft oil	1		128085	"O" ring	1	
3010467	Seal, crankshaft	1		154018	Gasket, head to crankcase	1	
203062	Gasket, front cover	1		176027	Gasket, support	1	
550164	Gasket, cam cover	1					
203074	Gasket, compressor support	1			FUEL PUMP GASKET SET		
203036	Gasket, support	1					
203008	Gasket, plate to block	1					
203026	Gasket, gear housing	1		BM-68356	Gasket set, fuel pump	1	
175727	Gasket, oil pan	1		100478	"O" ring, rubber	1	
553856	Gasket, oil drain	1		70705	Gasket, spring pack cover	1	
178283	Gasket, cover to L.O. body	1		100764	Gasket, front housing	1	
164916	Gasket, oil suction	1		3009625	Seal, oil	2	
554319	Gasket, housing to block	1		70809	Seal, tachometer drive shaft	1	
554321	Gasket, cooler to filter	1		70732	Gasket, tachometer housing	1	
554323	Gasket, cooler to filter	1		154087	"O" ring, sealing	1	
554320	Gasket, filter to block	1		43696-A	"O" ring, sealing	1	
554322	Gasket, filter to block	1		110855	Gasket, gear pump cover	1	
202789	Gasket, water pump	1		210647	Gasket, gear pump body	1	
157911	Gasket, air inlet connection	1		139988	"O" ring, rubber	1	
182459	Gasket, housing cover	1		100099	"O" ring	1	
172693	Gasket, flywheel adapter	1		129888	"O" ring, shut-off valve	1	
555699	Gasket, junction block	1		190876	"O" ring, rubber	1	
114123	Gasket, starter motor	1		151900	"O" ring, sealing	1	
AR-63520	Gasket, cylinder head set (Decoke)	1		154088	"O" ring, sealing	1	
553916	Gasket, thermostat housing	1		160514	Washer, nylon	1	
157018	Gasket, valve cover	2		70415	"O" ring	1	
157290	Gasket, cylinder head cover plate	4					
140329	Gasket, cover to housing	1					
9221	Gasket, water connection	1					
AR-62292	Gasket, push rod cover	2					
203063	Gasket, air intake crossover	2					
156996	Gasket, air intake manifold	2					
556355	Gasket, exhaust manifold	2					
554731	Lockplate, exhaust manifold	4					
551108	Lockplate, exhaust manifold	6					
101754	"O" ring, rubber	24					
156541	Seal, intake guide	16					
190849	Gasket, steel exhaust collect	1					
191116	Gasket, fibre air connection	1					
556711	Lockplate exhaust manifold	4					
145534	"O" ring	4					
553019	"O" ring	4					
211353	Gasket, steel exhaust connection	2					
214621	Cylinder head gasket	2					
AR-62281	Gasket, cylinder head (.010")	2					
AR-62282	Gasket, cylinder head (.020")	2					

PARTS INDENTED ARE INCLUDED IN THE PART UNDER WHICH THEY ARE INDENTED