

# Cummins Parts Catalog

Models: HR-6-GS and HR-6-GC

Bulletin: 966961

## Parts Ordering for: HR-6-GS and HR-6-GC

Genuine Cummins Parts and service facilities are world-wide. There are more than 1100 Cummins Sales and Service locations in the principal cities of the United States and Canada, and more than 350 Sales and Service locations situated elsewhere throughout the free world. Each distribution outlet is thoroughly equipped with technical data, factory-trained mechanics, modern equipment and a full, adequate stock of Genuine Cummins Parts.

For quicker and better service, your parts requirements should be ordered from your nearest Cummins Distributor or Dealer. At any of the locations prompt, intelligent, courteous service is a basic trademark. Each is ready and eager to help in every possible way through personal contact or through the mail — at your convenience.

The satisfactory ordering and receiving of parts by the purchaser is greatly dependent upon the proper use of available information. In order that all avoidable errors may be eliminated, the following instructions are offered as the purchaser's guide:

1. Write your order clearly, using a typewriter if possible.
2. Be sure to list the correct part number. If in doubt as to

the correct part number, state the engine model and serial number, main generator serial number, and excitor regulator serial number of the generator set on which the part is to be used. Part numbers are usually located in various places on the part itself.

3. When possible, arrange your purchase order in part number numerical sequence.
4. Always specify shipping instructions — "Best Way" is satisfactory if you have no preference.
5. State your company name and shipping address clearly.

Genuine Cummins Parts mean QUALITY! They're designed and engineered to fit best in your Cummins Diesel. Each part is made of the highest quality material — on the most accurate of machines — by the top craftsmen of the trade.

You can be sure a Genuine Cummins Part will fit better — do the job better — lessen the chances of costly breakdown. When you buy replacement parts, buy quality. Buy Genuine Cummins Parts!

YOU OWN THE BEST . . . REPAIR WITH THE BEST  
COPYRIGHT 1965 PRICE \$ .25

# Special Parts

This Parts Catalog includes those parts that are normally used on our standard engine model.

Special Parts peculiar to engine serial No. \_\_\_\_\_ are listed on the form below. To make certain you have ordered correct parts, refer to this form before submitting Parts Order.

[illegible]

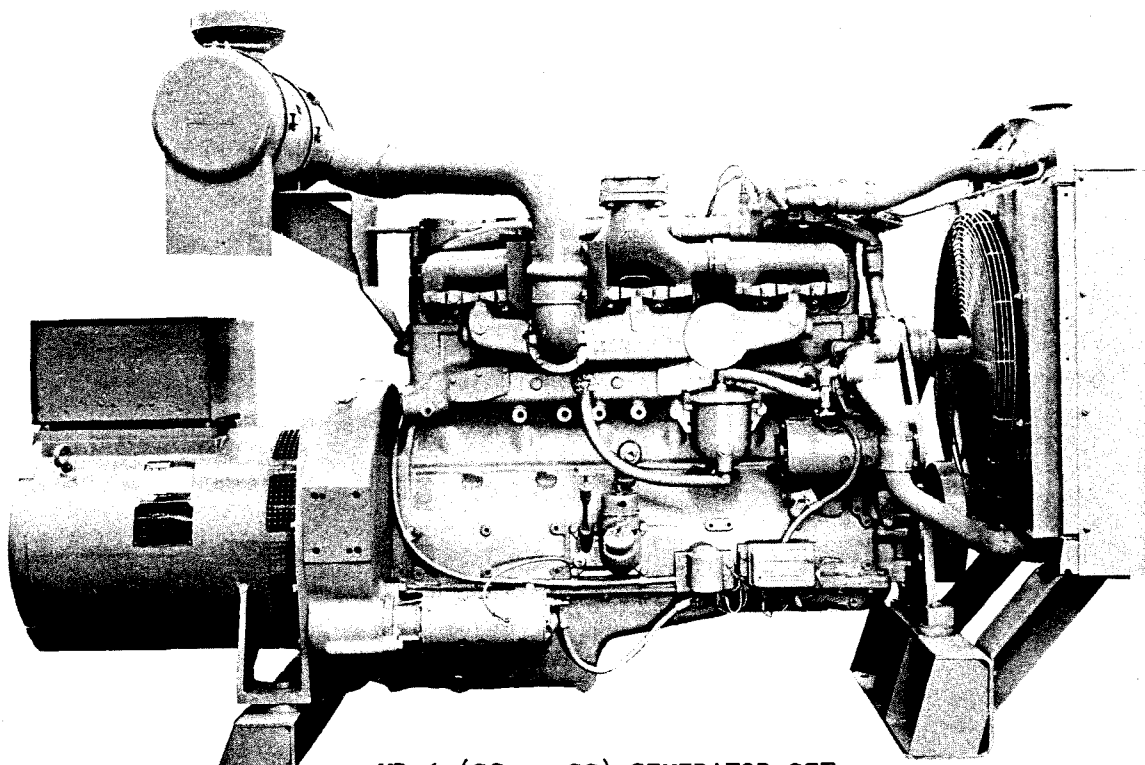
Cummins Distributor \_\_\_\_\_

# Table of Contents

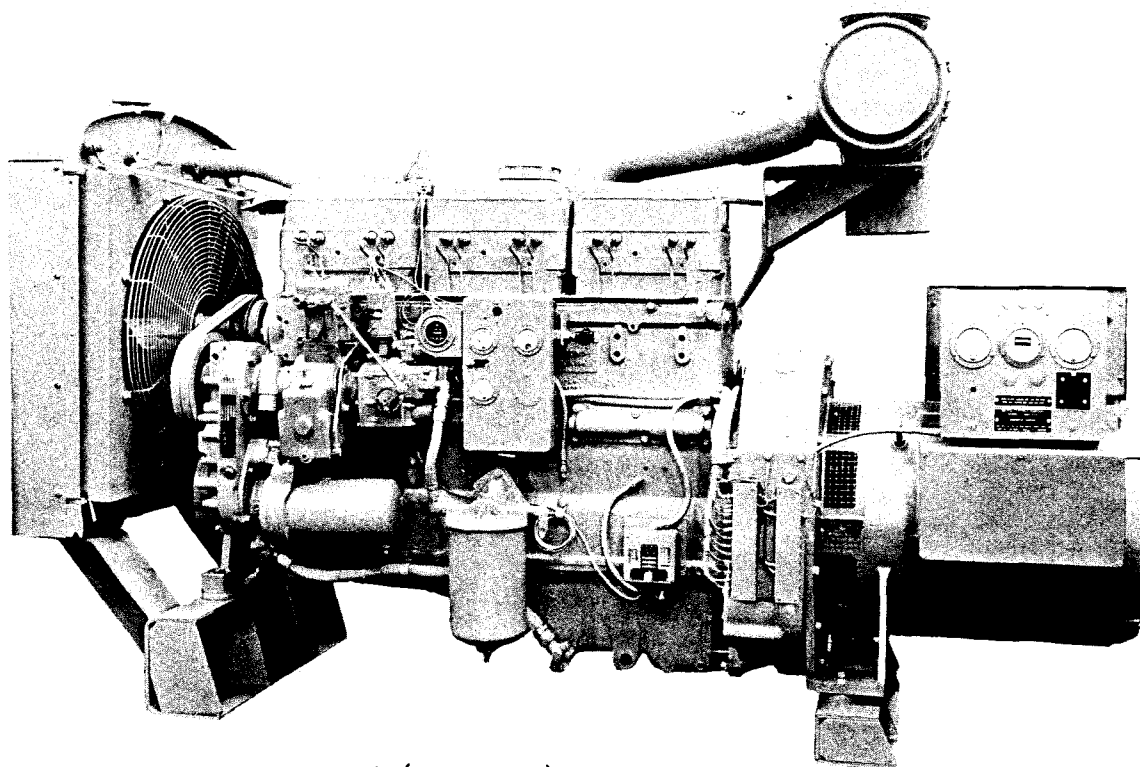
Cylinder Block - - - - -	1
Camshaft Bushing and Cylinder Liner	
Crankshaft, Main Bearings and Vibration Damper - - - - -	2
Connecting Rod, Piston and Rings - - - - -	3
Rear Cover and Camshaft - - - - -	4
Gear Cover - - - - -	5
Cylinder Head - - - - -	6
Rocker Lever Housing and Cover - - - - -	7
Cam Follower Housing and Push Rods - - - - -	8
Oil Pan, Dipstick, Oil Filler Bracket - - - - -	9
Crankcase Breather	
Lubricating Oil Filter - - - - -	10
Lubricating Oil Cooler - - - - -	11
Lubricating Oil Pump - - - - -	12
Water Pump, Drive Pulley and Fan Spacer - - - - -	13
Water Manifold - - - - -	14
Thermostat Housing and Connection - - - - -	15
Radiator, Fan Guard and Front Motor Support - - - - -	16
Exhaust Manifold - - - - -	17
Intake Manifold and Connection - - - - -	18
Air Cleaner - - - - -	19
Woodward Hydraulic Governor - - - - -	20 - 21
Governor Mounting - - - - -	22
Fuel Pump and Governor Drive - - - - -	23
Fuel Pump Damper, Gear Pump and Filter - - - - -	24
Shutdown Valve, Injector and Overspeed Stop - - - - -	25
Fuel Tubing and Fuel Inlet and Drain Connections	
Engine Electrical Equipment, Gasket Sets - - - - -	26 - 27
Flywheel, Ring Gear and Flywheel Housing	
Engine Instrument Panel - - - - -	28
Crossmembers and Engine Lifting Bracket - - - - -	29
Main Generator - - - - -	30
Static Exciter Regulator - - - - -	31 - 32 - 33 - 34
Automatic Start Panel - - - - -	35
Control Cabinets (Generator Mounted) - - - - -	36
Control Cabinets (Wall Mounted) - - - - -	37 - 38
Control Cabinet Illustrations - - - - -	39

## OPTIONAL EQUIPMENT

Lubricating Oil Cooler, Sea Water Pump - - - - -	40
Corrosion Resistor, Water Manifold and Thermostat Housing	
Heat Exchanger, Water Cooled Exhaust Manifold - - - - -	41
Exhaust Silencers and Flexible Exhaust Pipe	
Air Manifold Connection, Glow Plug, Hand-priming Pump - - - - -	42
Ether Capsule, Kim Hotstart, Air Cleaner and Fuel Pump Drive	
Woodward Governor, Starting Motor, Air Starter - - - - -	43
Air Starter Air Compressor, Compressor Air Tank	
Manual Shutdown Valve, Overspeed Stop, Fuel Float Tank - - - - -	44
Fuel Transfer Pump, Fuel Lines	



HR-6 (GS or GC) GENERATOR SET  
(Exhaust manifold side)



HR-6 (GS or GC) GENERATOR SET  
(Fuel pump side)

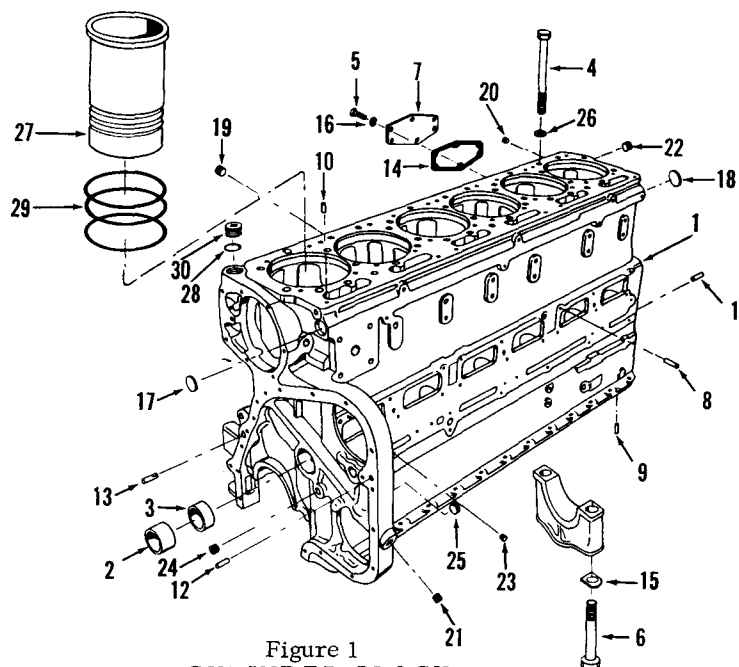


Figure 1  
CYLINDER BLOCK

Part Number	Part Name	No. Req.	Fig. No.	Ref. No.	Part Number	Part Name	No. Req.	Fig. No.	Ref. No.
BM-58511	Block assembly (121815)	1	1	1	S-190-C	Capscrew	1		
BM-27253	Bushing assembly, camshaft	1			132648	Flange, oil drain	1		
100670	Bushing	1	1	2	67963	Gasket, blind flange	1		
157870	Bushing	6	1	3	132832	Liner, cylinder	6	1	27
100305	Capscrew, cylinder head	18	1	4	S-604	Lockwasher	3		
S-114	Capscrew, water header cover	12	1	5	S-258	Nut	1		
105953	Capscrew, main bearing	14	1	6	68910	"O" Ring	1	1	28
132019	Cover, water header	2	1	7	140169	Plate, name	1		
68585	Dowel, cam follower housing to block	6	1	8	67891	Packing, liner	18	1	29
67211	Dowel, main bearing cap	2	1	9	9213	Pipe, lubricating oil	3		
68445	Dowel, cylinder head	6	1	10	69304	Plug, water by-pass	1	1	30
9226	Dowel, flywheel housing	2	1	11	S-2267	Screw, name plate	6		
60408	Dowel, gear cover	2	1	12					
70653	Dowel, gear cover	2	1	13					
70089-1	Gasket, water header cover	2	1	14					
9427	Lockplate, main bearing	14	1	15					
S-600	Lockwasher	12	1	16					
S-719	Plug, expansion	1	1	17					
S-716	Plug, expansion	1	1	18					
S-962	Plug, pipe	2	1	19					
69901	Plug, pipe	6							
S-910-B	Plug, pipe	2	1	20					
S-915-A	Plug, pipe	3	1	21					
S-966-E	Plug, pipe	1	1	22					
S-911-B	Plug, pipe	1	1	23					
S-935-B	Plug, pipe	3	1	24					
S-915-A	Plug, pipe	1							
S-995	Plug, pipe	1	1	25					
123107	Washer, cylinder head	18	1	26					
S-129	Capscrew, blind flange	2							
S-118-A	Capscrew	1							

PARTS INDENTED ARE INCLUDED IN THE PART UNDER WHICH THEY ARE INDENTED

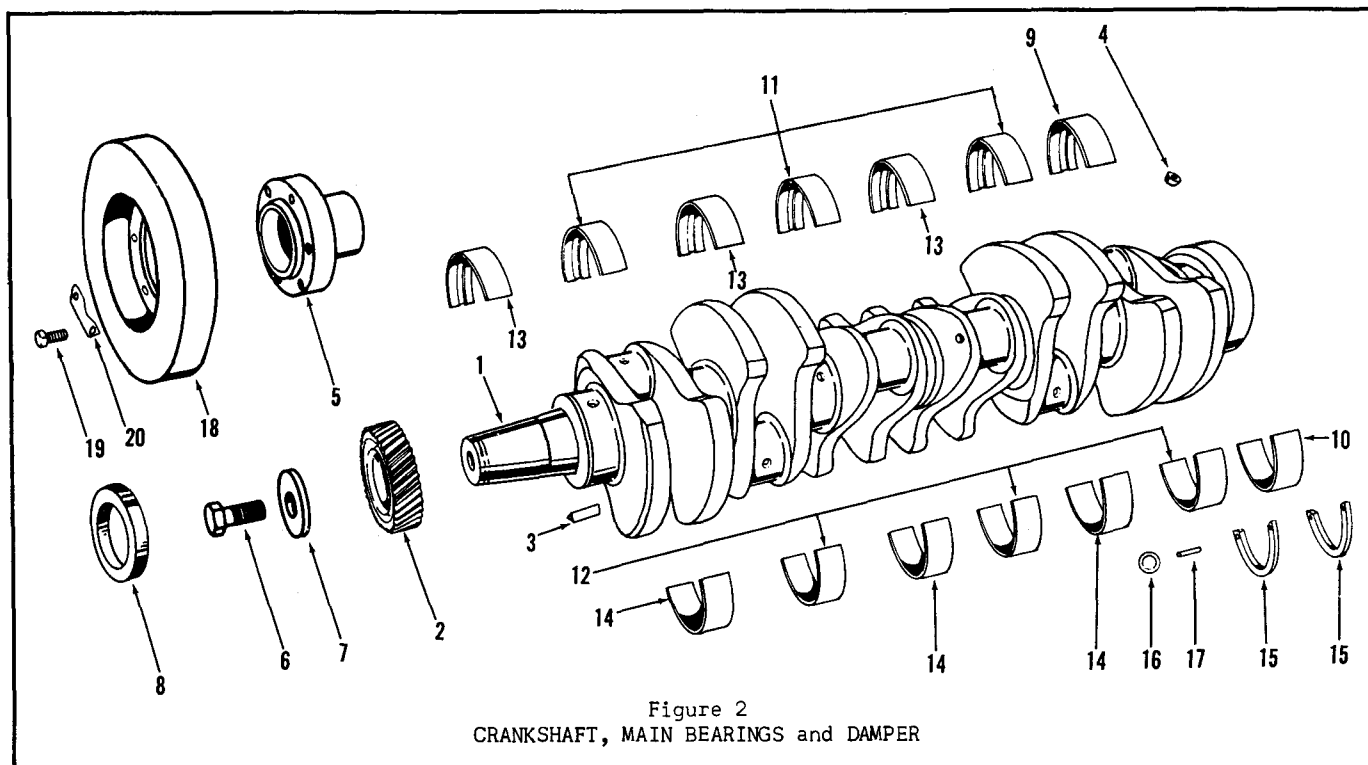


Figure 2  
CRANKSHAFT, MAIN BEARINGS and DAMPER

Part Number	Part Name	No. Req.	Fig. No.	Ref. No.	Part Number	Part Name	No. Req.	Fig. No.	Ref. No.
BM-79869	Crankshaft assembly	1							
162186	Crankshaft	1	2	1					
9168-2	Gear, pinion	1	2	2					
9300-1	Key, pinion	1	2	3					
S-911-B	Plug, pipe	6	2	4					
115562	Flange, crankshaft	1	2	5					
140410	Capscrew	1	2	6					
140411	Retainer, crankshaft seal, dust	1	2	7					
141743	Seal, dust and oil	1	2	8					
BM-28978	* Set, main bearing shell	1							
44387	Shell, bearing (No. 7 upper)	1	2	9					
44388	Shell, bearing (No. 7 lower)	1	2	10					
44385	Shell, bearing (No. 2, 4 and 6, upper)	3	2	11					
44386	Shell, bearing (No. 2, 4 and 6, lower)	3	2	12					
44383	Shell, bearing (No. 1, 3 and 5, upper)	3	2	13					
44384	Shell, bearing (No. 1, 3 and 5, lower)	3	2	14					
157280	Ring, thrust	4	2	15					
60575	Dowel, upper main bearing shell	7	2	16					
67294	Dowel	2	2	17					
*Main bearing shells may be purchased in .010", .020", .030", and .040" undersize.									
20633-1	Damper, vibration	1	2	18					
108919	Capscrew	6	2	19					
68462	Lockplate	3	2	20					

PARTS INDENTED ARE INCLUDED IN THE PART UNDER WHICH THEY ARE INDENTED

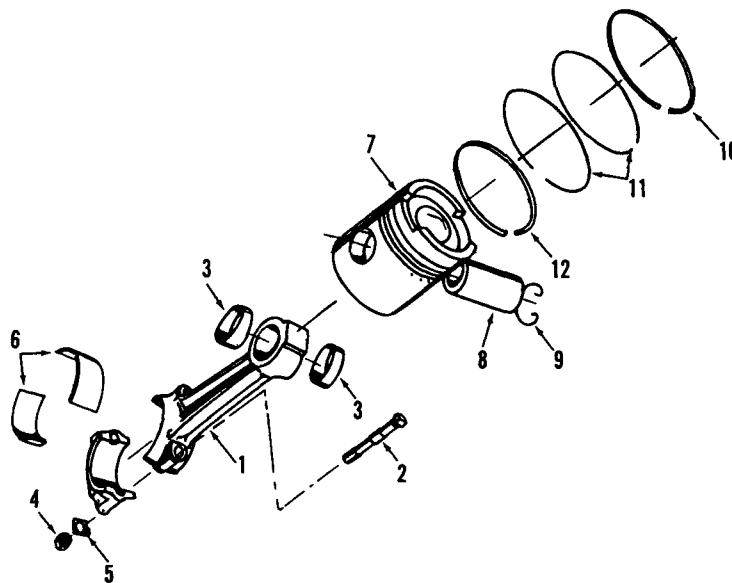


Figure 3  
CONNECTING ROD, PISTON AND RINGS

Part Number	Part Name	No. Req.	Fig. No.	Ref. No.	Part Number	Part Name	No. Req.	Fig. No.	Ref. No.
BM-35519	Rod assembly (101158)	6	3	1	BM-35080	Ring set, piston	1		
9195-3	Bolt, rod	12	3	2	100233	Ring, compression	6	3	10
43067	Bushing	12	3	3	41878	Ring, compression	12	3	11
69936	Nut, bolt	12	3	4	156690	Ring, oil	6	3	12
112611	Lockplate, rod	12	3	5					
42679-1	Bearing, rod	12	3	6	BM-35082	Ring set, piston .020" oversize	1		
					104002	Ring, compression	6	3	10
BM-45720	Piston assembly	6			103982	Ring, compression	12	3	11
148690	Piston	6	3	7	156692	Ring, oil	6	3	12
66877-1	Pin, piston	6	3	8	BM-35083	Ring set, piston .030" oversize	1		
61908	Ring, snap	12	3	9	104003	Ring, compression	6	3	10
BM-45722	Piston assembly .020" oversize	6			103983	Ring, compression	12	3	11
148692	Piston	6	3	7	156693	Ring, oil	6	3	12
66877-1	Pin, piston	6	3	8	BM-35084	Ring set, piston .040" oversize	1		
61908	Ring, snap	6	3	9	104004	Ring, compression	6	3	10
BM-45723	Piston assembly .030" oversize	6			103984	Ring, compression	12	3	11
148693	Piston	6	3	7	156694	Ring, oil	6	3	12
66877-1	Pin, piston	6	3	8					
61908	Ring, snap	6	3	9					
BM-45724	Piston assembly .040" oversize	6							
148694	Piston	6	3	7					
66877-1	Pin, piston	6	3	8					
61908	Ring, snap	6	3	9					

PARTS INDENTED ARE INCLUDED IN THE PART UNDER WHICH THEY ARE INDENTED



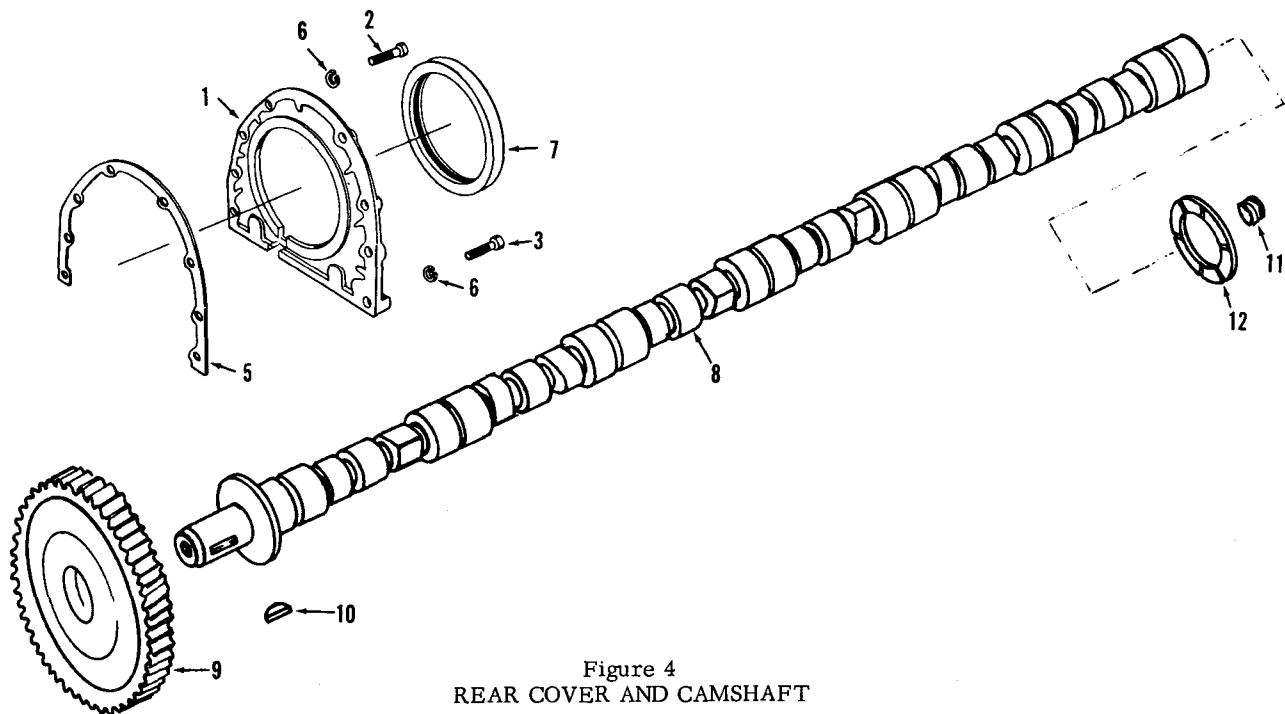


Figure 4  
REAR COVER AND CAMSHAFT

Part Number	Part Name	No. Req.	Fig. No.	Ref. No.	Part Number	Part Name	No. Req.	Fig. No.	Ref. No.
	Rear Cover					Camshaft			
123982	Cover, rear	1	4	1	129860	Camshaft (R.H.)	1	4	8
S-120-A	Capscrew	6	4	2	109072	Gear, camshaft	1	4	9
S-165	Capscrew	2	4	3	69550	Key, gear	1	4	10
64790	Dowel, rear cover	2			68193	Plug, pipe	1	4	11
40662	Gasket (.010")	As	4	5	9235-1	Ring, thrust	1	4	12
40662-A	Gasket (.005")	Req'd	4	5					
S-604	Lockwasher	8	4	6					
141744	Seal, rear oil	1	4	7					

PARTS INDENTED ARE INCLUDED IN THE PART UNDER WHICH THEY ARE INDENTED

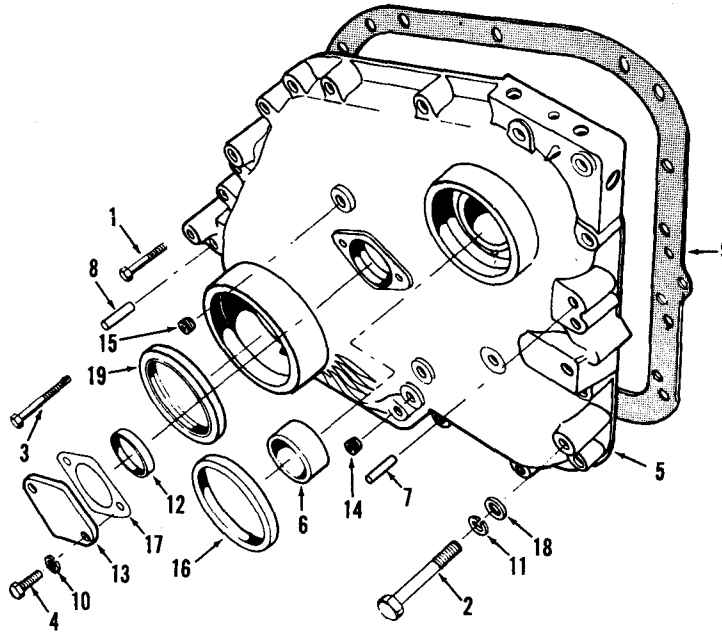


Figure 5  
GEAR COVER

Part Number	Part Name	No. Req.	Fig. No.	Ref. No.	Part Number	Part Name	No. Req.	Fig. No.	Ref. No.
S-109	Capscrew	2	5	1					
100915	Capscrew	15	5	2					
S-131-C	Capscrew	1	5	3					
S-127-A	Capscrew	2	5	4					
BM-92981	Cover, gear (162650)	1	5	5					
132770	Bushing	1	5	6					
67234-B	Insert, helicoil	2							
60408	Dowel	2	5	7					
70653	Dowel	1	5	8					
121934	Gasket, cover	1	5	9					
S-604	Lockwasher	2	5	10					
S-610	Lockwasher	18	5	11					
67270	Packing, camshaft thrust plate	1	5	12					
138988	Plate, camshaft thrust	1	5	13					
S-908	Plug, pipe	1	5	14					
S-911-B	Plug, pipe	1	5	15					
149488	Seal	1	5	16					
BM-56657	Shim assembly	1							
68192-A	Shim (.010")	Use	5	17					
68192-B	Shim (.005")	As	5	17					
68192-C	Shim (.002")	Req'd	5	17					
S-622	Washer, plain	18	5	18					
141743	Seal, crankshaft oil	1	5	19					

PARTS INDENTED ARE INCLUDED IN THE PART UNDER WHICH THEY ARE INDENTED

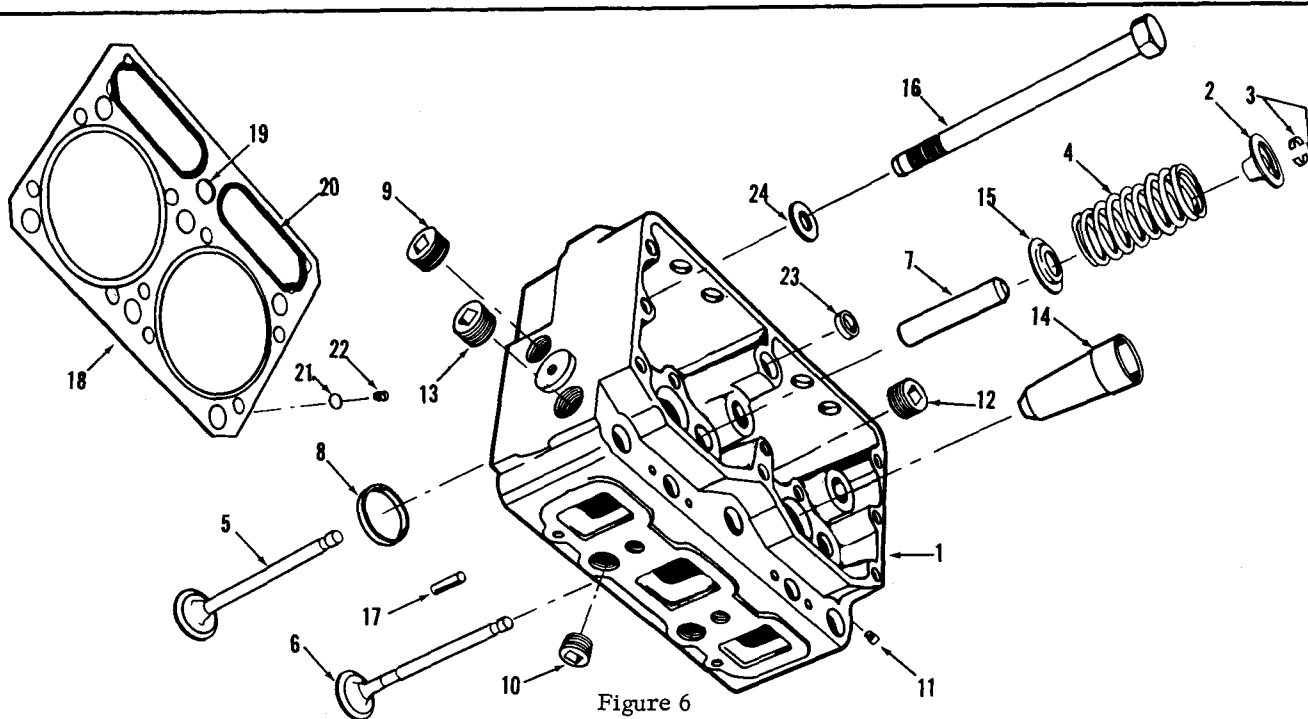


Figure 6  
CYLINDER HEAD

Part Number	Part Name	No. Req.	Fig. No.	Ref. No.	Part Number	Part Name	No. Req.	Fig. No.	Ref. No.
BM-61413	Head, cylinder (131700)	3	6	1					
60010	Guide, valve spring	12	6	2					
60011-1	Half-collet, valve	24	6	3					
68997	Spring, valve	12	6	4					
9167-Y	Valve, exhaust	6	6	5					
69032	Valve, intake	6	6	6					
BM-61412	Head, cylinder (less valves)	3							
105984	Guide, valve	12	6	7					
70650	Insert, exhaust valve seat	6	6	8					
S-962	Plug, pipe	9	6	9					
S-995	Plug, pipe	6	6	10					
S-911-B	Plug, pipe	3	6	11					
67861	Plug, pipe	6	6	12					
125162	Plug, fuse	3	6	13					
8901-3	Sleeve, injector	6	6	14					
105986	Retainer, valve guide	12	6	15					
100305	Capscrew, head to block	18	6	16					
68445	Dowel, head to block	6	6	17					
BM-51499	Gasket, head (107371)	3	6	18					
121446	Grommet	3	6	19					
121384	Ring, push tube	6	6	20					
132705	Grommet, oil and water	27	6	21					
131168	Ferrule	27	6	22					
129373	Gasket, lubricating pipe	3	6	23					
123107	Washer, capscrew	18	6	24					

PARTS INDENTED ARE INCLUDED IN THE PART UNDER WHICH THEY ARE INDENTED

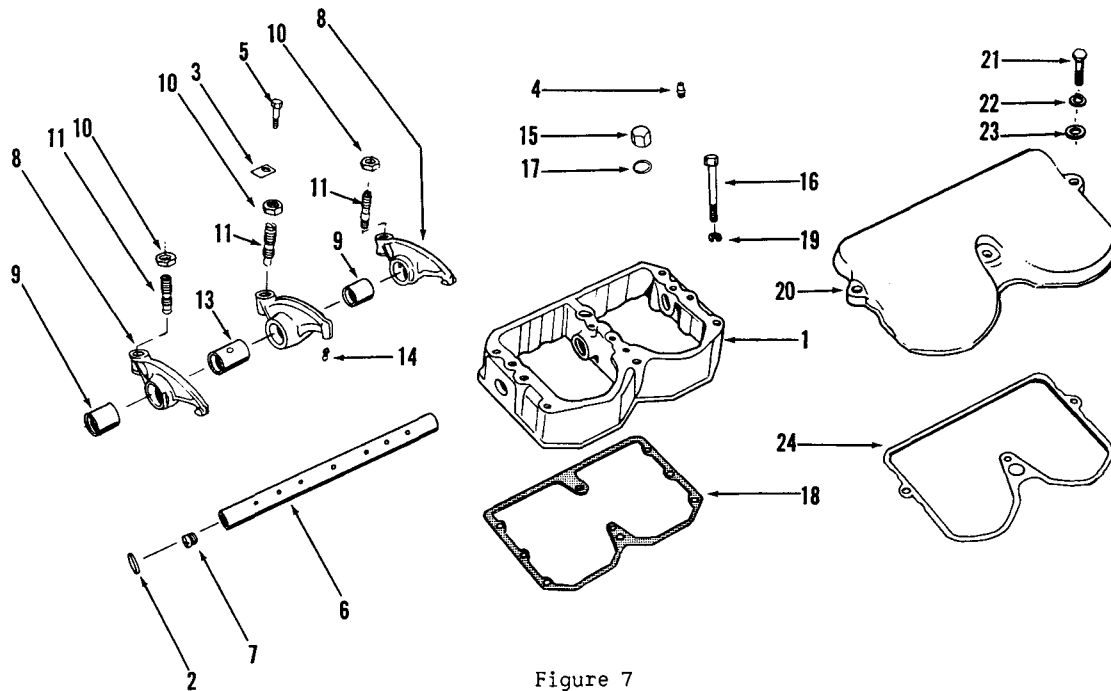


Figure 7  
ROCKER LEVERS, HOUSING and COVER

Part Number	Part Name	No. Req.	Fig. No.	Ref. No.	Part Number	Part Name	No. Req.	Fig. No.	Ref. No.
BM-37715	Housing, rocker lever	3				COVER			
BM-73974	Housing and plug	3			42357	Cover, rocker housing	3	7	20
146259	Housing	3	7	1	S-174-B	Capscrew	9	7	21
175830	Plug, expansion	6	7	2	S-604	Lockwasher	9	7	22
67282	Lockplate	3	7	3	S-602	Washer	9	7	23
62229	Plug, ventilator	3	7	4	108692	Gasket, cover	3	7	24
168319	Screw, rocker lever shaft	3	7	5					
BM-68740	Shaft, rocker lever (140297)	3	7	6					
161825	Plug, shaft	6	7	7					
BM-95147	Lever, valve	12							
BM-95146	Lever and bushing (168816)	12	7	8					
143650	Bushing, lever	12	7	9					
S-212	Nut, adjusting screw	12	7	10					
168306	Screw, adjusting	12	7	11					
BM-95154	Lever, injector	6							
BM-95144	Lever, injector (168801)	6	7	12					
169353	Bushing, lever	6	7	13					
152173	Socket, injector	6	7	14					
S-212	Nut, adjusting screw	6	7	10					
168306	Screw, adjusting	6	7	11					
9271	Cap, lubricating pipe	3	7	15					
108601	Capscrew (3 1/2" long)	21	7	16					
108602	Capscrew (3 3/4" long)	A							
108603	Capscrew (4" long)	/							
108604	Capscrew (4 1/2" long)	R							
9272	Gasket, cap	3	7	17					
4798	Gasket, housing	3	7	18					
158208	Washer, plain	21	7	19					

PARTS INDENTED ARE INCLUDED IN THE PART UNDER WHICH THEY ARE INDENTED

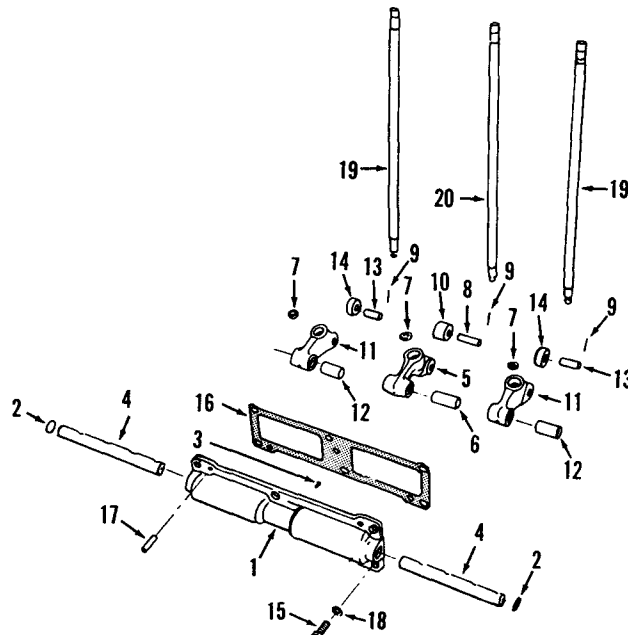


Figure 8  
CAM FOLLOWER HOUSING AND PUSH RODS

Part Number	Part Name	No. Req.	Fig. No.	Ref. No.	Part Number	Part Name	No. Req.	Fig. No.	Ref. No.
BM-37625	Housing, cam follower	3							
BM-73976	Housing, cam follower	3							
44035	Housing, cam follower	3	8	1					
146261	Plug, expansion	6	8	2					
69736	Screw, shaft	6	8	3					
42443	Shaft, rocker lever	6	8	4					
BM-37621	Lever, injector (108169)	6							
BM-37496	Lever and bushing (108169)	6	8	5					
118377	Bushing, injector lever	6	8	6					
107738	Insert lever	6	8	7					
68512	Pin, roller	6	8	8					
118939	Pin, roll	6	8	9					
7348-2	Roller, injector cam	6	8	10					
BM-37634	Lever, intake and exhaust (120543)	12							
BM-37633	Lever and bushing (120543)	12	8	11					
118378	Bushing	12	8	12					
107738	Insert, lever	12	8	7					
68513	Pin, valve, cam roller	12	8	13					
118939	Pin, roll	12	8	9					
9260-1	Roller, valve cam	12	8	14					
S-129	Capscrew, housing to block	18	8	15					
120819	Gasket (.026")	As	8	16					
9266-A	Gasket (.007")	Req'd.	8	16					
68585	Dowel, housing to block	6	8	17					
S-604	Lockwasher	18	8	18					
BM-47778	Rod assembly, intake and exhaust	12	8	19					
BM-47779	Rod assembly, injector	6	8	20					

PARTS INDENTED ARE INCLUDED IN THE PART UNDER WHICH THEY ARE INDENTED

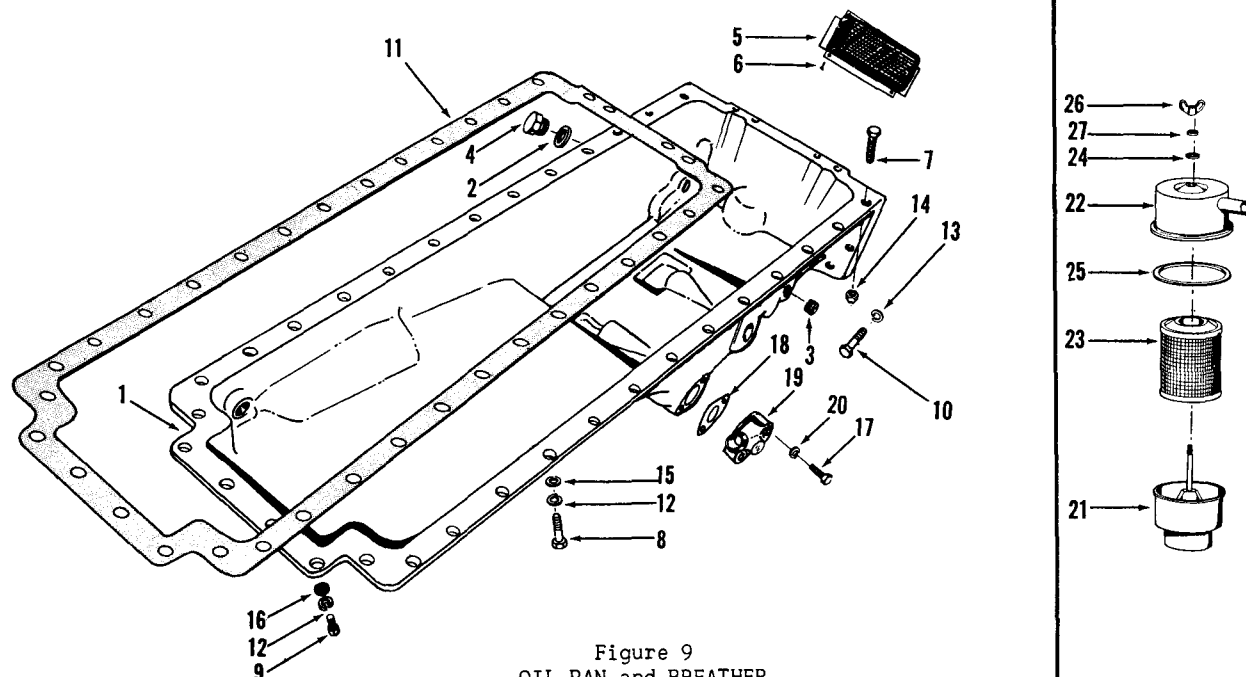


Figure 9  
OIL PAN and BREATHER

Part Number	Part Name	No. Req.	Fig. No.	Ref. No.	Part Number	Part Name	No. Req.	Fig. No.	Ref. No.
BM-47713	Pan, oil (116895)	1	9	1		OIL SUCTION FLANGE			
67946	Gasket, by-pass valve	1	9	2	S-137	Capscrew, flange	2	9	17
S-915-A	Plug, pipe (1/2")	4	9	3	67963	Gasket, flange	1	9	18
110907	Plug, oil drain	1	9	4	67955	Flange, oil suction	1	9	19
20622	Screen, oil suction plate	1	9	5	S-604	Lockwasher	2	9	20
S-1354	Screw, suction screen	4	9	6		DIPSTICK and OIL FILLER BRACKET			
	PAN MOUNTING PARTS								
67023	Bolt, oil pan	2	9	7	106598	Bracket, oil gauge	1		
70349	Capscrew, pan to block	26	9	8	101368	Dipstick	1		
103009	Capscrew, pan to gear cover	4	9	9	101322	Cap, oil filler	1		
105574	Capscrew, pan to rear cover	4	9	10	S-137	Capscrew	4		
5083	Gasket, pan to block	1	9	11	65274	Gasket	1		
S-610	Lockwasher	30	9	12	S-604	Lockwasher	4		
S-605	Lockwasher, pan to gear cover	4	9	13	101814	Tube, oil gauge	1		
S-230-A	Nut, pan to block	2	9	14	101264	Tube, oil filler	1		
S-622	Washer	30	9	15		BREATHER			
S-626	Washer, pan to gear cover	4	9	16	154272	Breather, crankcase	1		
					155998	Body, breather	1	9	21
					155997	Cover, breather	1	9	22
					123716	Element, breather	1	9	23
					125015	Gasket, wing nut	1	9	24
					125019	Gasket, cover	1	9	25
					125017	Nut, wing	1	9	26
					125016	Washer	1	9	27

PARTS INDENTED ARE INCLUDED IN THE PART UNDER WHICH THEY ARE INDENTED

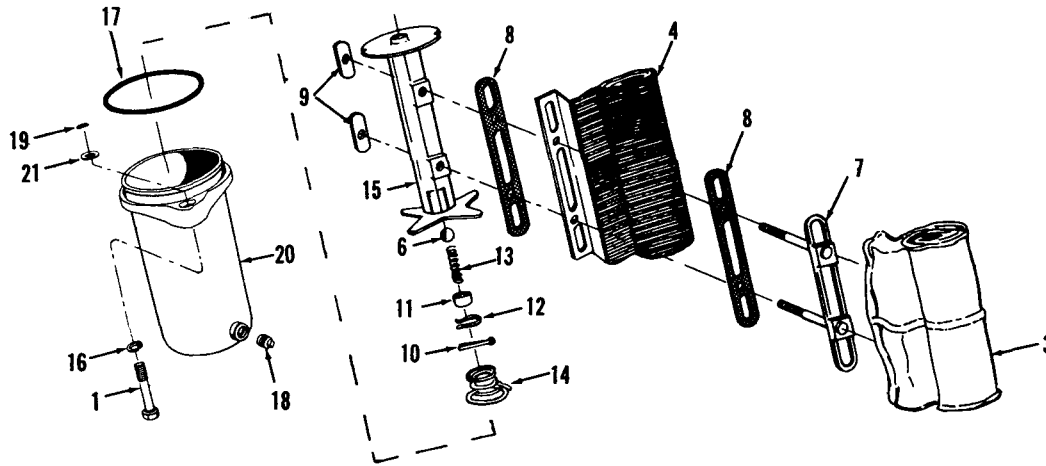


Figure 10  
LUBRICATING OIL FILTER

Part Number	Part Name	No. Req.	Fig. No.	Ref. No.	Part Number	Part Name	No. Req.	Fig. No.	Ref. No.
BM-54270	Filter, oil	1							
135168	Capscrew, filter to pump	2	10	1					
S-1915-1	Element assembly	1	10						
S-1953	Bag, filter LF-502	1	10	3					
134729	Separator, bag	1	10	4					
128798	Spool assembly	1	10						
128805	Ball, by-pass relief	1	10	6					
128800	Clamp, bag	1	10	7					
128801	Gasket, bag	2	10	8					
128802	Nut, locking	2	10	9					
S-503	Pin, cotter	1	10	10					
128803	Retainer, spring	1	10	11					
128807	Ring, snap	1	10	12					
128804	Spring, by-pass, ball	1	10	13					
128806	Spring, spool	1	10	14					
128799	Spool	1	10	15					
S-608	Lockwasher	2	10	16					
116024	"O" Ring, shell to pump	1	10	17					
139090	Plug, drain	1	10	18					
135169	Ring, retaining	2	10	19					
250728	Shell assembly	1	10	20					
158208	Washer, plain	2	10	21					

PARTS INDENTED ARE INCLUDED IN THE PART UNDER WHICH THEY ARE INDENTED

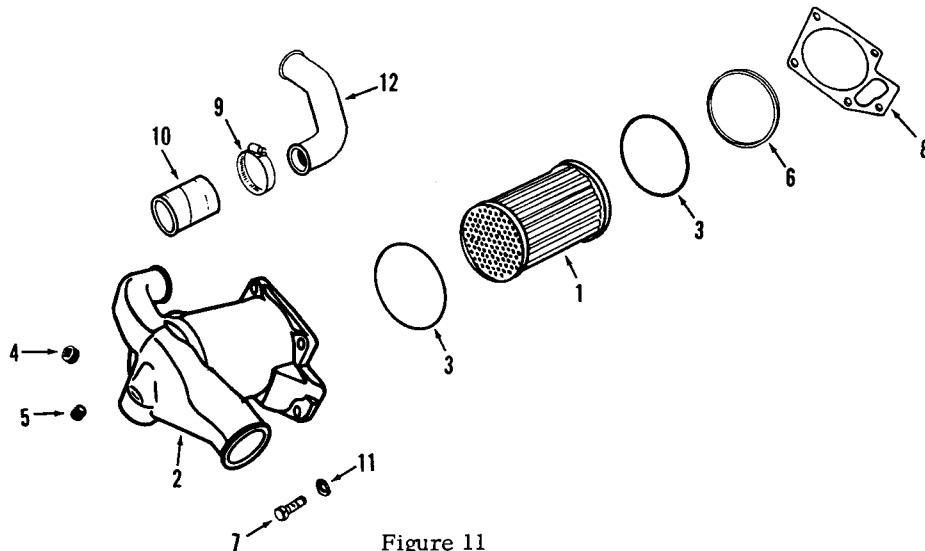


Figure 11  
LUBRICATING OIL COOLER

Part Number	Part Name	No. Req.	Fig. No.	Ref. No.	Part Number	Part Name	No. Req.	Fig. No.	Ref. No.
BM-54320	Cooler assembly, oil	1							
110848	Element, cooler	1	11	1					
121778	Housing	1	11	2					
148293	"O" Ring	2	11	3					
S-995	Plug, pipe	1	11	4					
S-910-B	Plug, pipe	1	11	5					
110827	Retainer, "O" Ring	1	11	6					
S-103-D	Capscrew	5	11	7					
121779	Gasket	1	11	8					
43828-B	Clamp, hose	4	11	9					
63495	Hose	2	11	10					
S-604	Lockwasher	5	11	11					
21133	Pipe, by-pass	1	11	12					

PARTS INDENTED ARE INCLUDED IN THE PART UNDER WHICH THEY ARE INDENTED



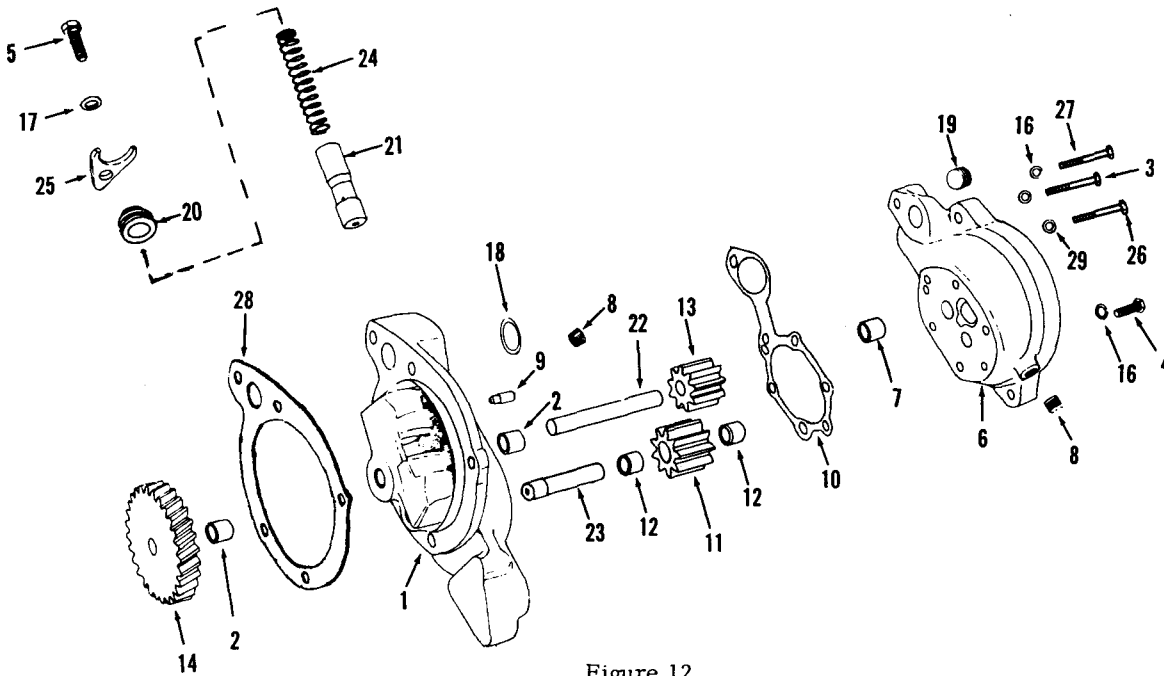
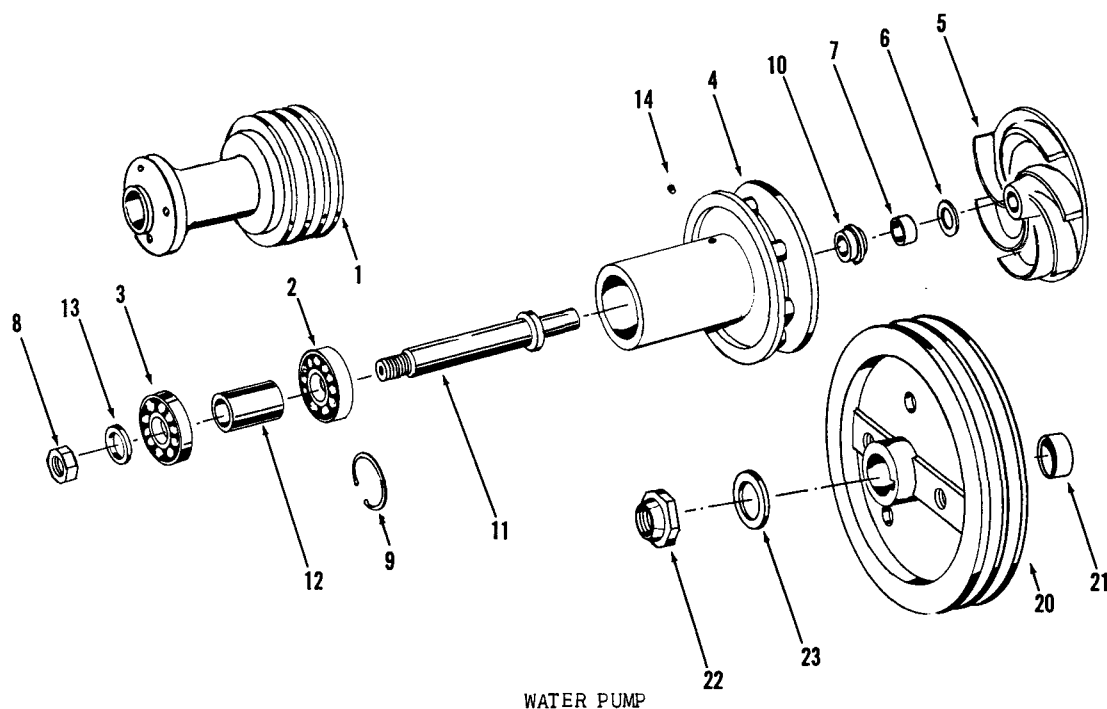


Figure 12  
LUBRICATING OIL PUMP

Part Number	Part Name	No. Req.	Fig. No.	Ref. No.	Part Number	Part Name	No. Req.	Fig. No.	Ref. No.
BM-70204	Pump, oil	1			HS1602506MS	Lubricating Oil Hose			
BM-70198	Body and bushing (142739)	1	12	1	67950	Hose, pump to pan	1		
68586	Bushing	2	12	2		Clamp, hose	1		
S-169-B	Capscrew	1	12	3					
108707	Capscrew	5	12	4					
S-109	Capscrew	1	12	5					
BM-55051	Cover and head (126157)	1	12	6					
68586	Bushing	1	12	7					
S-908	Plug, pipe	2	12	8					
69519	Dowel, washer	1	12	9					
130972	Gasket, body	1	12	10					
BM-20443	Gear, idler (68589)	1	12	11					
68586	Bushing	2	12	12					
68588	Gear	1	12	13					
125988	Gear, main drive	1	12	14					
109319	Lockplate	1							
S-604	Lockwasher	5	12	16					
S-610	Lockwasher	1	12	17					
69043	"O" Ring	1	12	18					
S-995	Plug, pipe	1	12	19					
134596	Plug, by-pass valve	1	12	20					
127558	Plunger, regulator	1	12	21					
126284	Shaft, drive	1	12	22					
126289	Shaft, idler	1	12	23					
68274	Spring, by-pass valve	1	12	24					
126304	Yoke, retaining	1	12	25					
S-101-A	Capscrew, pump to block	3	12	26					
S-119-C	Capscrew, pump to block	1	12	27					
121907	Gasket, pump to block	1	12	28					
S-610	Lockwasher	4	12	29					

**PARTS INDENTED ARE INCLUDED IN THE PART UNDER WHICH THEY ARE INDENTED**



Part Number	Part Name	No. Req.	Ref. No.	Part Number	Part Name	No. Req.	Ref. No.
BM-78358	Pump, water (with pulley)	1			PULLEY and FAN SPACER		
150929	Pulley, pump	1	1				
BM-71040	Pump, water (less pulley)	1		BM-79328	Pulley, fan and water pump drive (161073)	1	20
115512	Bearing, ball	1	2	68680	Sleeve	1	21
168569	Bearing, ball	1	3	108707	Capscrew, spacer	6	
165135	Body, pump	1	4	105297	Locknut, pulley	1	22
BM-71656	Impeller (122295) (R.H.)	1	5	S-604	Lockwasher, spacer	6	
143913	Film, bonding	1	6	139872	Spacer, fan	1	
135079	Seat, impeller	1	7	S-690	Washer	1	23
115508	Nut, huglock	1	8				
S-16255	Ring, retaining	1	9				
144306	Seal, pump	1	10				
115501	Shaft, pump	1	11				
67509	Spacer	1	12				
115550	Washer, plain	1	13				
S-911-B	Plug, pipe	1	14				
172856	Belt	2					
S-194	Capscrew	6					
66348	Clamp	1					
9097	Gasket, pump	1					
S-604	Lockwasher	1					

PARTS INDENTED ARE INCLUDED IN THE PART UNDER WHICH THEY ARE INDENTED

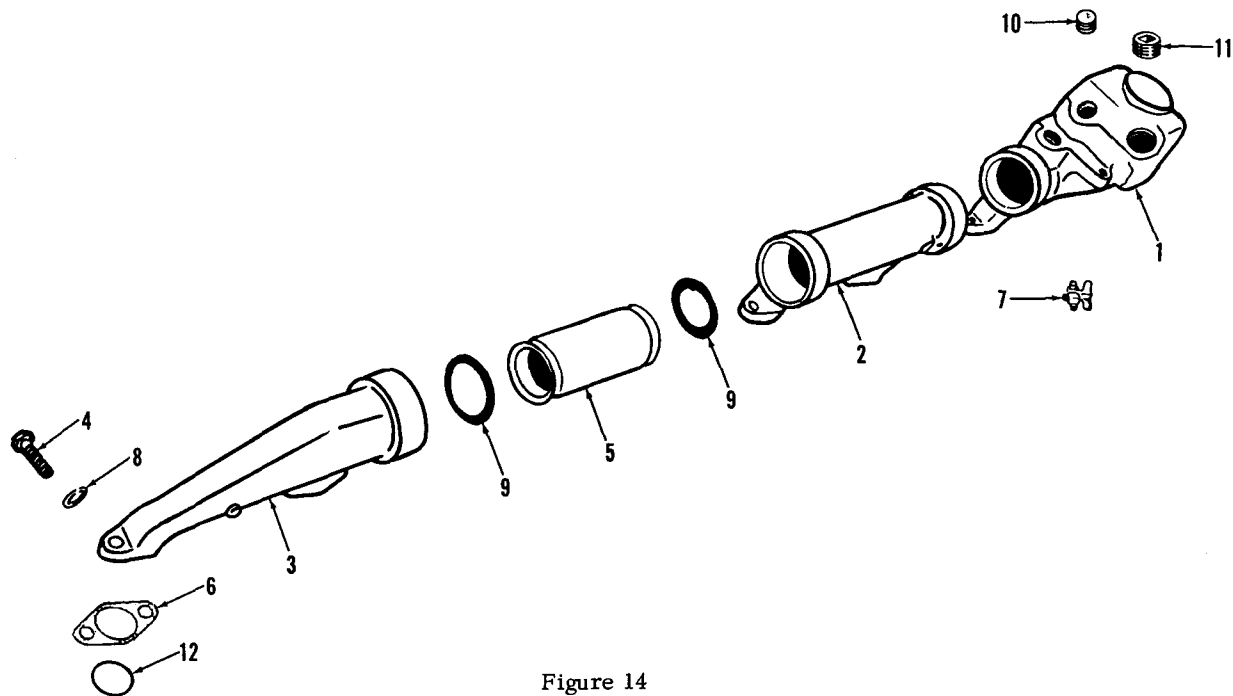
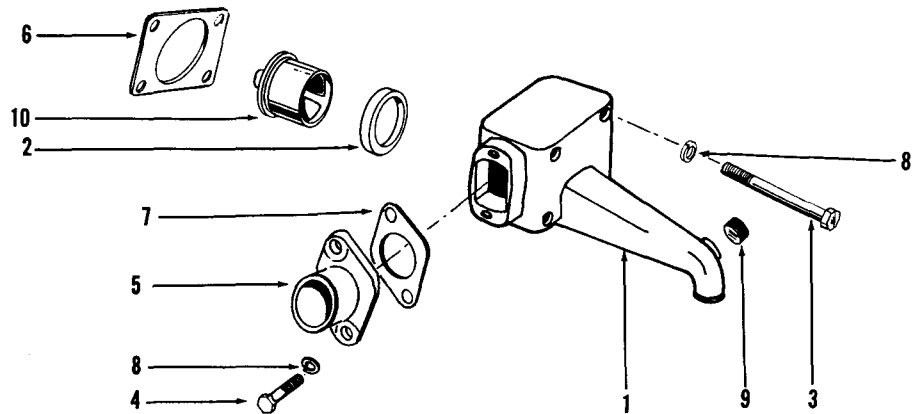


Figure 14  
WATER MANIFOLD

Part Number	Part Name	No. Req.	Fig. No.	Ref. No.	Part Number	Part Name	No. Req.	Fig. No.	Ref. No.
21749	Manifold, water	1	14	1					
44733	Manifold, water	1	14	2					
44730	Manifold, water	1	14	3					
S-138-A	Capscrew	12	14	4					
70627	Coupling, manifold	2	14	5					
S-962-E	Drain cock	1	14	7					
S-605	Lockwasher	12	14	8					
70624	"O" Ring	4	14	9					
S-915-A	Plug, pipe	2	14	10					
S-995	Plug, pipe	1	14	11					
BM-90021	Plate and ring assembly	6							
156334	Plate, retaining	6	14	6					
160196	Ring, sealing	6	14	12					

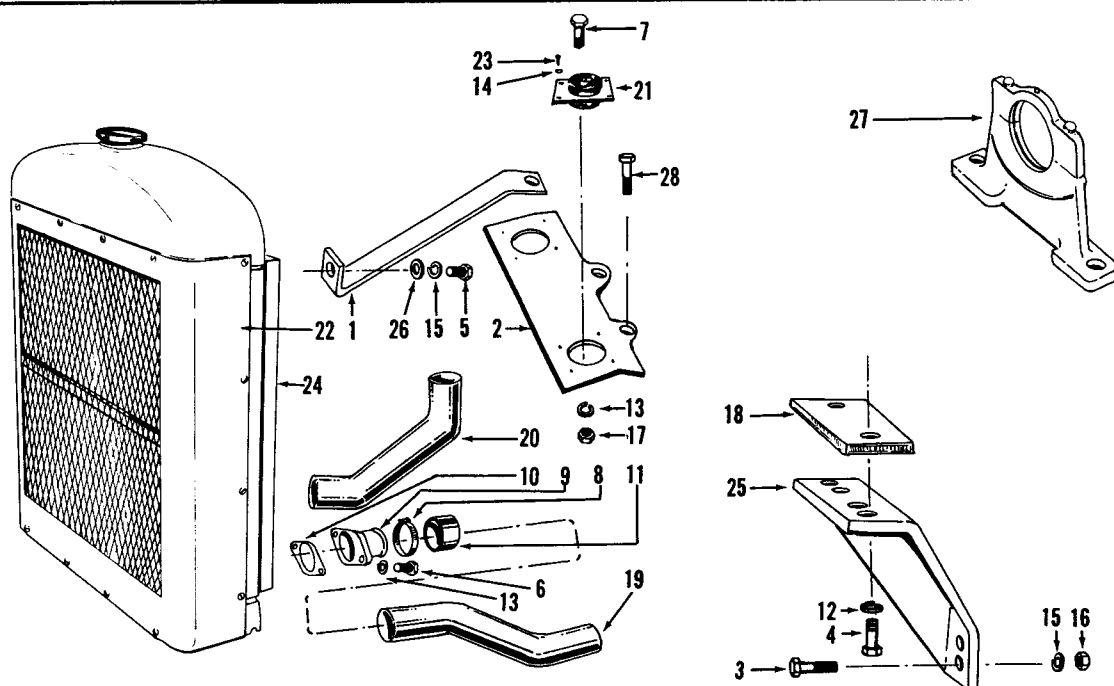
PARTS INDENTED ARE INCLUDED IN THE PART UNDER WHICH THEY ARE INDENTED



THERMOSTAT HOUSING and CONNECTION

Part Number	Part Name	No. Req.	Ref. No.	Part Number	Part Name	No. Req.	Ref. No.
BM-73209	Housing, thermostat (140205)	1	1				
135600	Seal	1	2				
S-199-B	Capscrew	4	3				
S-112	Capscrew	2	4				
68270	Connection	1	5				
70441	Gasket, housing	1	6				
9221	Gasket, connection	1	7				
S-604	Lockwasher	6	8				
S-908	Plug	1	9				
135675	Thermostat	1	10				

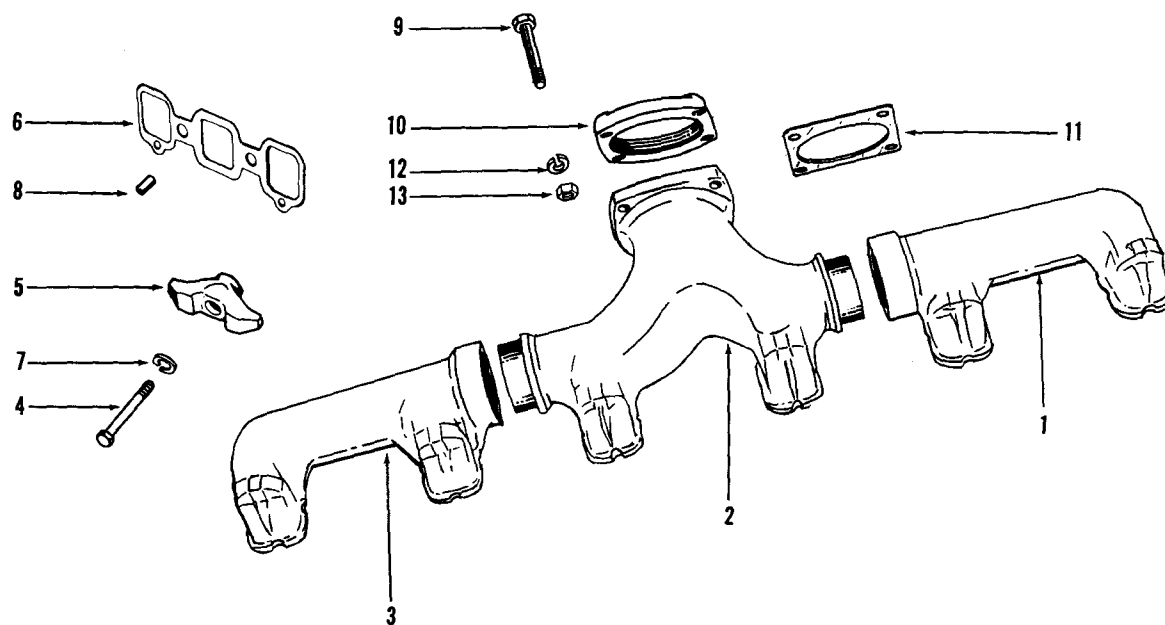
PARTS INDENTED ARE INCLUDED IN THE PART UNDER WHICH THEY ARE INDENTED



RADIATOR, FAN GUARD and FRONT SUPPORT

Part Number	Part Name	No. Req.	Ref. No.	Part Number	Part Name	No. Req.	Ref. No.
160141	Brace, radiator	1	1		FRONT ENGINE SUPPORT		
160140	Brace, radiator	1					
158996	Bracket, support	1	2	BM-78437	Support, front engine	1	27
S-113	Capscrew (1/2-13 UNC-2A, 1 1/2")	8	3	108602	Capscrew	2	
S-127-C	Capscrew (5/8-11 UNC-2A, 1 3/4")	4	4	S-2268	Fitting, grease	1	
S-169	Capscrew (1/2-13 UNC-2A, 1")	2	5	S-608	Lockwasher	2	
S-112	Capscrew (3/8-16 UNC-2A, 1")	2	6		FAN GUARD		
S-137	Capscrew (3/8-16 UNC-2A, 2")	2	7	S-107	Capscrew	8	
43828-D	Clamp, hose	8	8	128049	Guard, fan	1	
68270	Connection, radiator	1	9	S-605	Lockwasher	8	
9221	Gasket, connection	1	10				
110980	Hose	4	11				
S-603	Lockwasher (5/8")	4	12				
S-604	Lockwasher (3/8")	4	13				
S-607	Lockwasher (.190")	8	14				
S-608	Lockwasher (1/2")	10	15				
S-200	Nut	8	16				
S-223	Nut	2	17				
127845	Pad, mounting	2	18				
160136	Pipe, inlet	1	19				
160139	Pipe, outlet	1	20				
S-2875	Plate, rubber mount	2	21				
130696	Radiator	1	22				
145354	Screw	8	23				
147123	Shroud	1	24				
160138	Support, radiator	2	25				
S-601	Washer	2	26				
108602	Capscrew (1/2-13 UNC-2A, 3 3/4")	2	28				

PARTS INDENTED ARE INCLUDED IN THE PART UNDER WHICH THEY ARE INDENTED



Part Number	Part Name	No. Req.	Ref. No.	Part Number	Part Name	No. Req.	Ref. No.
133026	Manifold, exhaust (Front)	1	1		EXHAUST MANIFOLD FLANGE		
133027	Manifold, exhaust (Center)	1	2				
133028	Manifold, exhaust (Rear)	1	3				
S-137-B	Capscrew, intake and exhaust manifold	6	4	S-160-B	Capscrew	4	9
105289	Clamp, intake and exhaust manifold	6	5	62543	Flange, exhaust	1	10
147263	Gasket, intake and exhaust manifold	3	6	139266	Gasket, exhaust flange	1	11
S-603	Lockwasher, intake and exhaust manifold	6	7	S-608	Lockwasher	4	12
68445	Pin, dowel, exhaust manifold	6	8	S-267	Nut	4	13

PARTS INDENTED ARE INCLUDED IN THE PART UNDER WHICH THEY ARE INDENTED

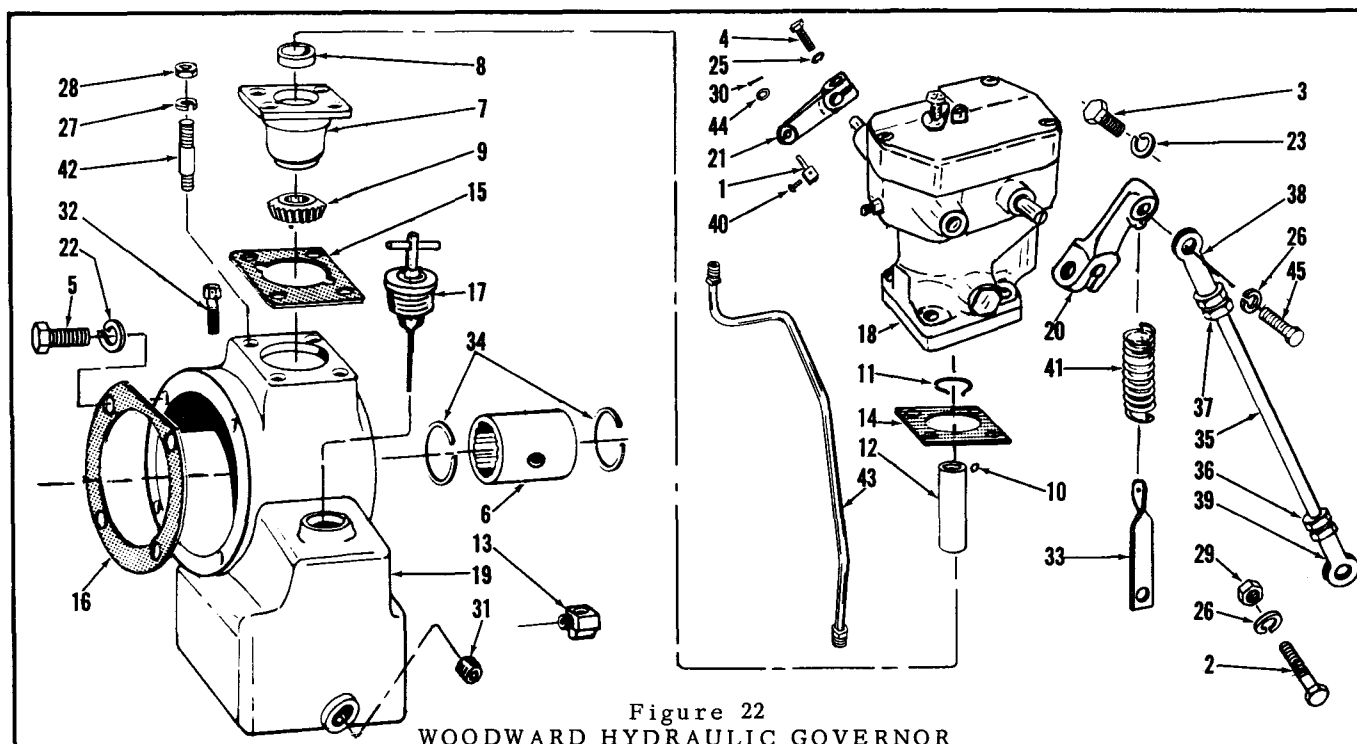


Figure 22  
WOODWARD HYDRAULIC GOVERNOR

Part Number	Part Name	No. Req.	Fig. No.	Ref. No.	Part Number	Part Name	No. Req.	Fig. No.	Ref. No.
68846	Block, swivel	1	22	1	111674	Governor, Woodward	1	22	18
S-102	Capscrew, control rod (lower)	1	22	2	102984	Housing, governor auxiliary drive	1	22	19
S-102-A	Capscrew, control lever to governor	1	22	3	70481	Lever, governor control	1	22	20
S-102-A	Capscrew, speed adjusting lever	1	22	4	67020-A	Lever, speed adjusting	1	22	21
103023	Capscrew, bearing support to governor housing	1	22	5	S-610	Lockwasher, governor bearing support	4	22	22
103369	Coupling, splined	4	22	6	S-605	Lockwasher, control lever to governor	1	22	23
BM-43766	Drive assembly, vertical	1	22	7	S-605	Lockwasher, speed adjusting lever	1	22	25
BM-43223	Assembly, bearing and retainer	1	22	8	S-605	Lockwasher, control rod	2	22	26
102991	Collar, governor drive	1	22	9	S-605	Lockwasher, governor stud	4	22	27
102988	Gear, governor drive	1	22	10	69832	Nut, governor stud	4	22	28
70739	Key, ball	1	22	11	69832	Nut, control rod	1	22	29
103001	Ring, snap	1	22	12	S-511	Pin, cotter, swivel block	1	22	30
102986	Shaft, drive	1	22	13	S-908	Plug, pipe, governor housing	1	22	31
S-1028	Elbow	2	22	14	63876-1	Plug, pipe, vent	1	22	32
63520	Gasket, governor to bearing retainer	1	22	15	160536	Retainer, spring	1	22	33
102992	Gasket, governor bearing retainer to housing (.0055")	A/R	22	16	S-16238	Ring, snap	2	22	34
103004	Gasket, governor bearing retainer to housing (.0153")	A/R	22	17	BM-79595	Rod assembly control (102994)	1	22	35
102996	Gasket, fuel pump cover to governor housing	1	22	18	68351	Nut, jam (left hand)	1	22	36
124577	Gasket, governor housing to bearing support (.0153")	A/R	22	19	S-248	Nut, jam (right hand)	1	22	37
103005	Gasket, governor housing to bearing support (.018")	A/R	22	20	101646	Joint, unibal (right hand)	1	22	38
103507	Gauge, oil level	1	22	21	103000	Joint, unibal (left hand)	1	22	39
					S-1307	Screw, swivel block	1	22	40
					63525	Spring, governor return	1	22	41
					65445-B	Stud, governor mounting	4	22	42
					104888	Tube, governor oil supply	1	22	43
					S-603-A	Washer, plain	1	22	44
					S-186	Capscrew, control rod to governor control lever	1	22	45

PARTS INDENTED ARE INCLUDED IN THE PART UNDER WHICH THEY ARE INDENTED

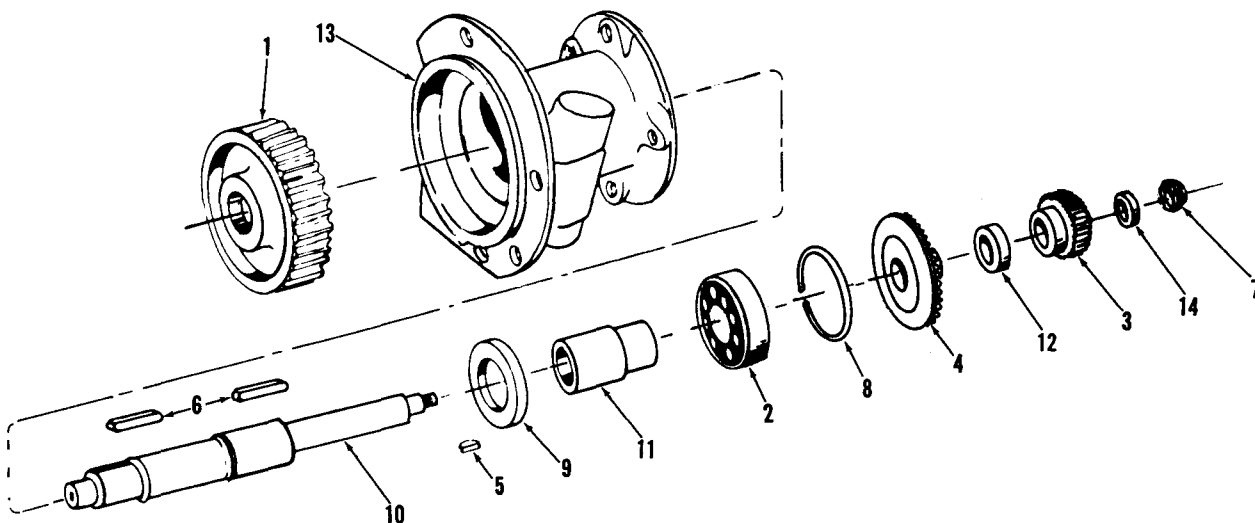


Figure 23  
FUEL PUMP AND WOODWARD GOVERNOR DRIVE

Part Number	Part Name	No. Req.	Fig. No.	Ref. No.	Part Number	Part Name	No. Req.	Fig. No.	Ref. No.
BM-57888	Drive, fuel pump	1	23						
121933	Gear, drive	1	23	1					
BM-78691	Drive, less gear	1							
S-16073	Bearing, ball	1	23	2					
102974	Coupling, half	1	23	3					
114645	Gear, governor drive	1	23	4					
S-306	Key, coupling	1	23	5					
69550	Key, shaft	2	23	6					
70897	Nut, shaft	1	23	7					
101453	Ring, snap	1	23	8					
106339	Seal, oil	1	23	9					
127846	Shaft, drive	1	23	10					
128067	Spacer, bearing	1	23	11					
114644	Spacer, governor drive	1	23	12					
127912	Support, bearing	1	23	13					
S-670	Washer	1	23	14					

PARTS INDENTED ARE INCLUDED IN THE PART UNDER WHICH THEY ARE INDENTED



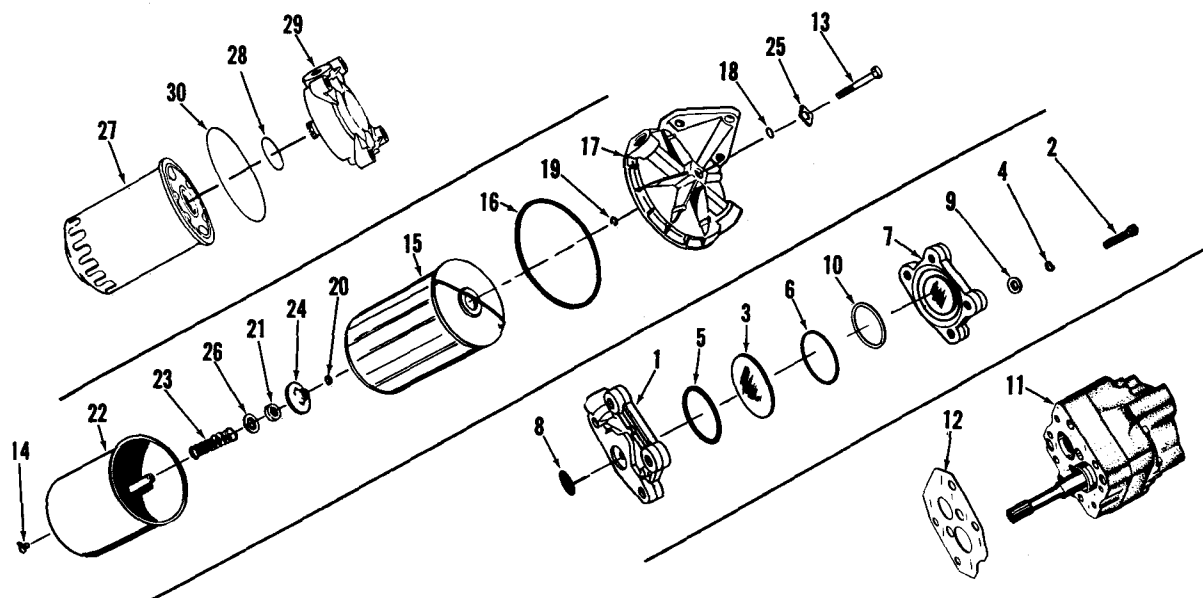
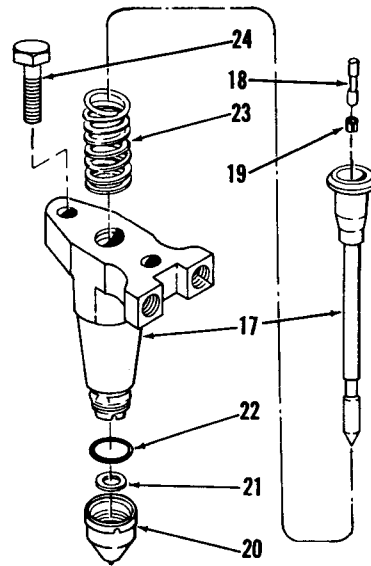
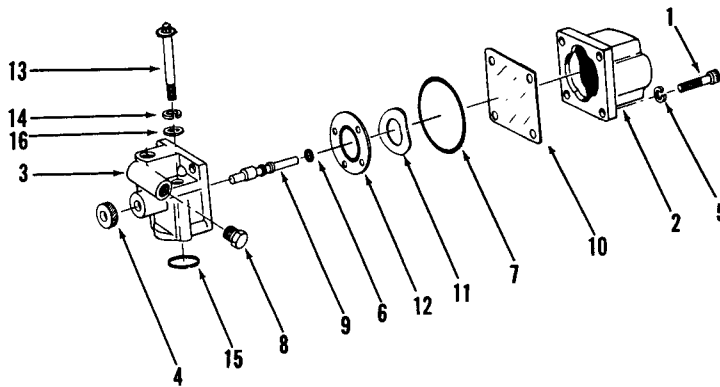


Figure 23  
FUEL PUMP DAMPER, GEAR PUMP and FILTERS

Part Number	Part Name	No. Req.	Ref. No.	Part Number	Part Name	No. Req.	Ref. No.
PT FUEL SYSTEM				FUEL FILTER (HR-6-GC)			
Each Cummins PT Fuel Pump is calibrated to obtain the best performance and fuel economy for your engine. Your Cummins Distributor or Dealer has the special tools required for complete rebuild and calibration. Caution: do not disturb the fuel pressure settings or the throttle screw settings, as serious damage to your engine may result.				151940	Filter, fuel	1	
Only PT Fuel System parts which can be replaced without pump calibration are listed here. Your Cummins Distributor will record the specific part number of your complete PT Fuel Pump in the front of this book.				121960	Capscrew, head to shell	1	13
				S-962-E	Cock, drain	1	14
				141986	Decal, filter	1	
				139097	Element (FF-8)	1	15
				151881	Gasket, head to shell	1	16
				251128	Head, filter	1	17
				134736	"O" ring, capscrew	1	18
				135169	Ring, grip, capscrew	1	19
				251131	Ring, grip, post	1	20
				151884	Seal, pilot	1	21
				251091	Shell and post	1	22
				151885	Spring, filter	1	23
				151920	Support, filter element	1	24
				251081	Washer, capscrew	1	25
				S-658	Washer	1	26
				167221	Bracket, mounting	1	
				S-129	Capscrew	2	
				108709	Capscrew	2	
				129859	Connector, 90°	1	
				HS1000600SS	Hose	1	
				S-604	Lockwasher	2	
				S-610	Lockwasher	2	
				S-602	Lockwasher	2	
				(HR-6-GS)			
				154711	Filter, fuel	1	
				BM-78669	Cartridge	1	27
				127506	Seal, cartridge	1	28
				142784	Head, filter	1	29
				250006	Seal	1	30
				152392	Bracket, fuel filter	1	
				S-112	Capscrew	4	
				HS1001200SS	Hose	1	
FUEL PUMP DAMPER							
BM-76340	Damper, fuel pump	1					
153336	Body, damper	1	1				
S-172-C	Capscrew	2	2				
139834	Diaphragm	1	3				
S-698	Lockwasher	2	4				
139988	"O" ring	1	5				
100099	"O" ring	1	6				
153338	Plate, damper	1	7				
151900	Seal	1	8				
70704	Washer	2	9				
160514	Washer, nylon	1	10				
GEAR PUMP							
BM-90270	Pump, gear (3/4") (R.H.)	1	11				
177764	Gasket, pump	1	12				

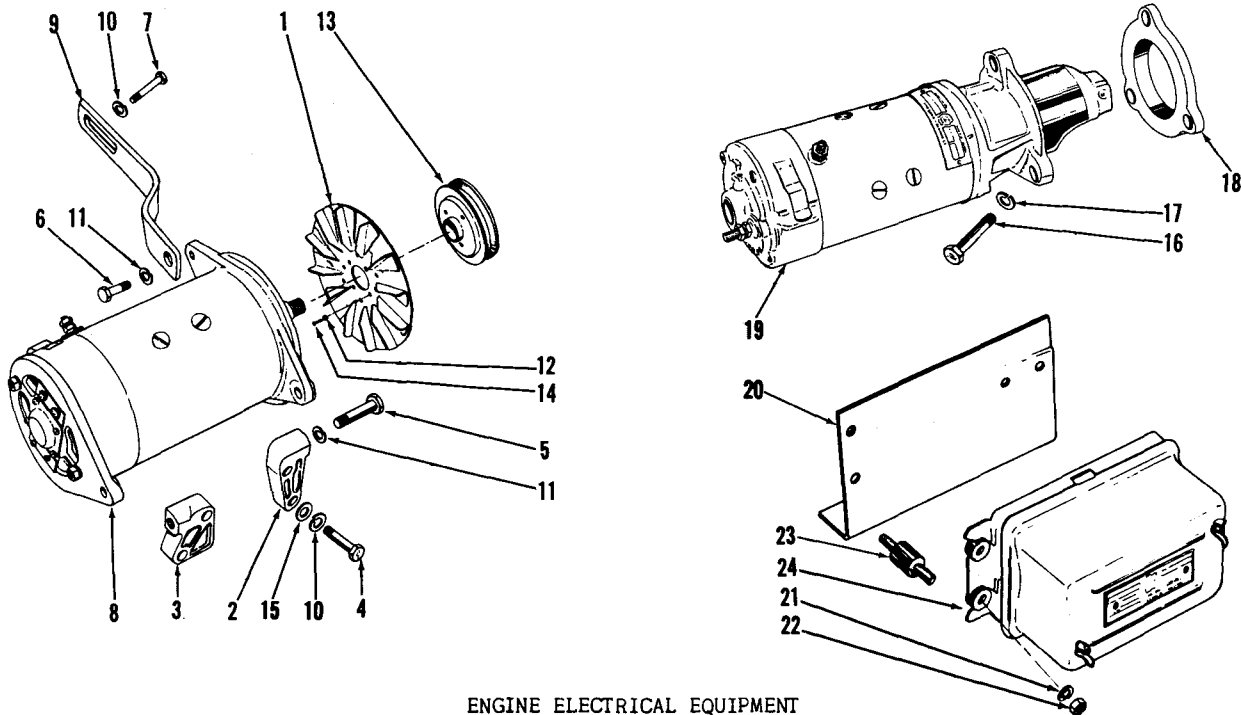
PARTS INDENTED ARE INCLUDED IN THE PART UNDER WHICH THEY ARE INDENTED



SHUTDOWN VALVE, INJECTOR and OVERSPEED STOP

Part Number	Part Name	No. Req.	Ref. No.	Part Number	Part Name	No. Req.	Ref. No.
SHUTDOWN VALVE				FUEL INLET and DRAIN CONNECTIONS			
BM-69979	Valve, shutdown (24 volt)	1					
S-1214	Capscrew, coil to housing	4	1	BM-30073	Connection, inlet	6	
134074	Coil	1	2	BM-30075	Connection, drain	6	
129826	Housing, shutdown valve	1	3	9426-2	Gasket, copper	12	
129838	Knob, manual override	1	4	70854	Gasket, rubber	12	
S-607	Lockwasher, coil to housing	4	5	70857	Retainer, gasket	12	
114791	"O" ring, manual override shaft	1	6	70856	Spring	12	
129888	"O" ring, coil to housing	1	7	S-1027	Tube, connector	1	
70295	Plug, pipe	1	8	100502	Elbow	1	
143679	Shaft, manual override	1	9				
129839	Shield, fuel	1	10		INJECTOR		
129768	Spring	1	11	BM-42923	Injector	6	
129827	Valve	1	12	BM-43000	Body and plunger	6	17
171546	Capscrew, valve to fuel pump	2	13	146814	Link	6	18
S-698	Lockwasher, valve to fuel pump	2	14	148504	Sleeve	6	19
154087	Ring, sealing, valve to fuel pump	1	15	BM-28826	Cup and gasket (101888)	6	20
67684	Washer, valve to fuel pump	2	16	62409	Gasket, cup	6	21
				70776	"O" ring, cup	6	22
				62123	Spring	6	23
				128388	Capscrew	12	24
FUEL TUBING				OVERSPEED STOP			
BM-28837	Manifold, fuel supply	1					
104453	Manifold, drain	1					
151979	Tube, fuel supply	1		165237	Stop, overspeed	1	
S-190-C	Capscrew	1					
69793	Capscrew	2					
70467	Clip, fuel line	5					
163646	Clip, tube	2					
S-604	Lockwasher	3					
S-602	Washer	3					

PARTS INDENTED ARE INCLUDED IN THE PART UNDER WHICH THEY ARE INDENTED



ENGINE ELECTRICAL EQUIPMENT

Part Number	Part Name	No. Req.	Ref. No.	Part Number	Part Name	No. Req.	Ref. No.
ENGINE GENERATOR				TERMINAL BLOCK			
42568	Baffle, fan	1	1	111881	Block, terminal	1	
121924	Bracket, front	1	2	S-127-C	Capscrew	2	
121925	Bracket, rear	1	3	S-603	Lockwasher	2	
178436	Belt, generator	1		170065	Plate, terminal block	1	
108707	Capscrew	4	4	128028	Screw, round head	4	
S-155	Capscrew	2	5	S-673	Washer	4	
S-112	Capscrew	1	6				
S-165	Capscrew	1	7				
124488	Generator	1	8				
121923	Link, adjusting	1	9	101208	Bracket, governor control	1	
S-604	Lockwasher (3/8")	5	10	S-188-C	Capscrew	1	
S-610	Lockwasher (7/16")	2	11	S-190-C	Capscrew	1	
S-606	Lockwasher	4	12	70467	Clip	1	
139497	Pulley, generator	1	13	S-600	Lockwasher	1	
S-1319	Screw	4	14	S-604	Lockwasher	1	
S-602	Washer	4	15	S-224	Nut	1	
				S-631	Washer	1	
STARTING MOTOR				MAGNETIC SWITCH			
S-103-A	Capscrew	3	16				
S-603	Lockwasher	3	17	111435	Bracket, switch	1	
9245	Spacer	1	18	S-107	Capscrew	2	
43604	Starting motor	1	19	S-605	Lockwasher	2	
				118848	Switch	1	
VOLTAGE REGULATOR							
111436	Bracket, voltage regulator	1	20				
S-600	Lockwasher (1/4")	6	21				
S-224	Nut (1/4")	6	22				
111923	Mount, flexible	3	23				
110713	Regulator, voltage (24 volt)	1	24				

PARTS INDENTED ARE INCLUDED IN THE PART UNDER WHICH THEY ARE INDENTED

Part Number	Part Name	No. Req.	Fig. No.	Ref. No.	Part Number	Part Name	No. Req.	Fig. No.	Ref. No.
ENGINE ELECTRICAL EQUIPMENT									
Electrical equipment is not manufactured by the Cummins Engine Company, Inc. Complete service for electrical equipment may be obtained from the manufacturers, The Delco-Remy Company at Anderson, Indiana, The Leece-Neville Company at Cleveland, Ohio, The Electric Autolite Company at Toledo, Ohio, or from their service stations. Address of nearest service station may be obtained from the manufacturer.									
GASKET SETS									
BM-62428	Engine gasket set	1							
BM-50744	Cylinder head gasket set	1							
BM-68356	Fuel pump gasket set	1							
FLYWHEEL HOUSING									
10428-A	Housing, flywheel	1							
MOUNTING PARTS									
106289	Capscrew	3							
S-104-A	Capscrew	9							
S-113	Capscrew	4							
9246	Cover, inspection hole	1							
9226	Dowel	2							
9333-1	Gasket	1							
S-603	Lockwasher	9							
S-604	Lockwasher, shield	2							
S-608	Lockwasher	4							
S-600	Lockwasher	2							
S-200	Nut	3							
137648	Screw, shield	2							
70214	Screw, index hole cover	2							
150467	Shield, cover	1							
S-601	Washer	4							
FLYWHEEL AND RING GEAR									
BM-2409	Flywheel and ring gear	1							
2884	Flywheel	1							
5566	Gear, ring	1							
MOUNTING PARTS									
64487	Capscrew	6							
60585	Dowel	2							
64482	Lockwire	3							

PARTS INDENTED ARE INCLUDED IN THE PART UNDER WHICH THEY ARE INDENTED

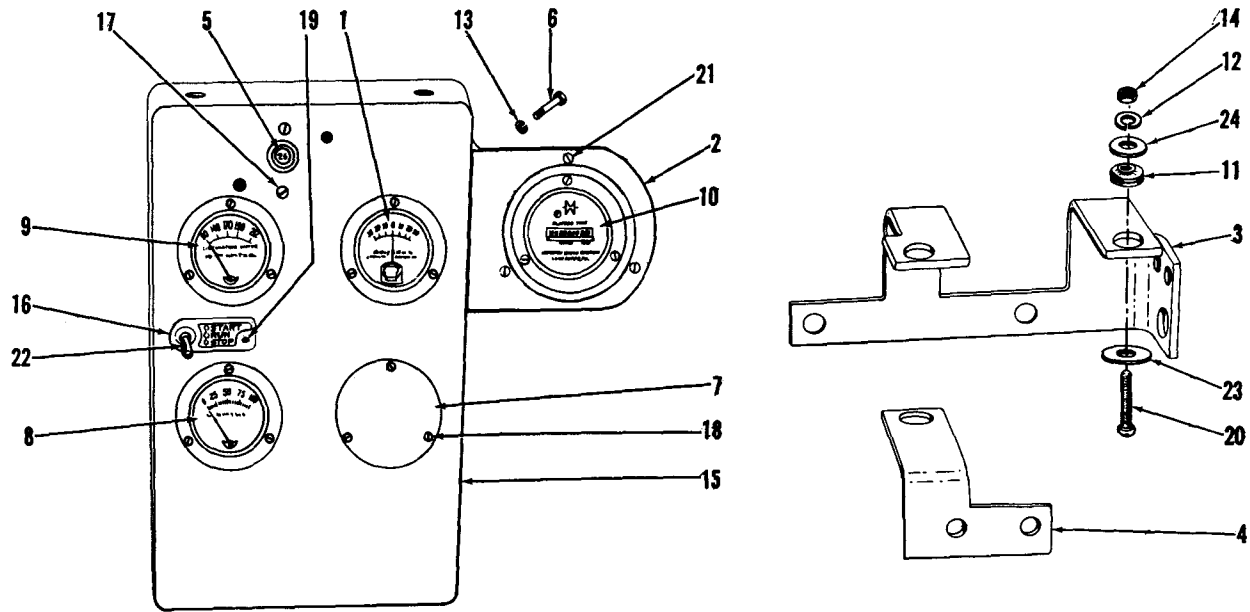
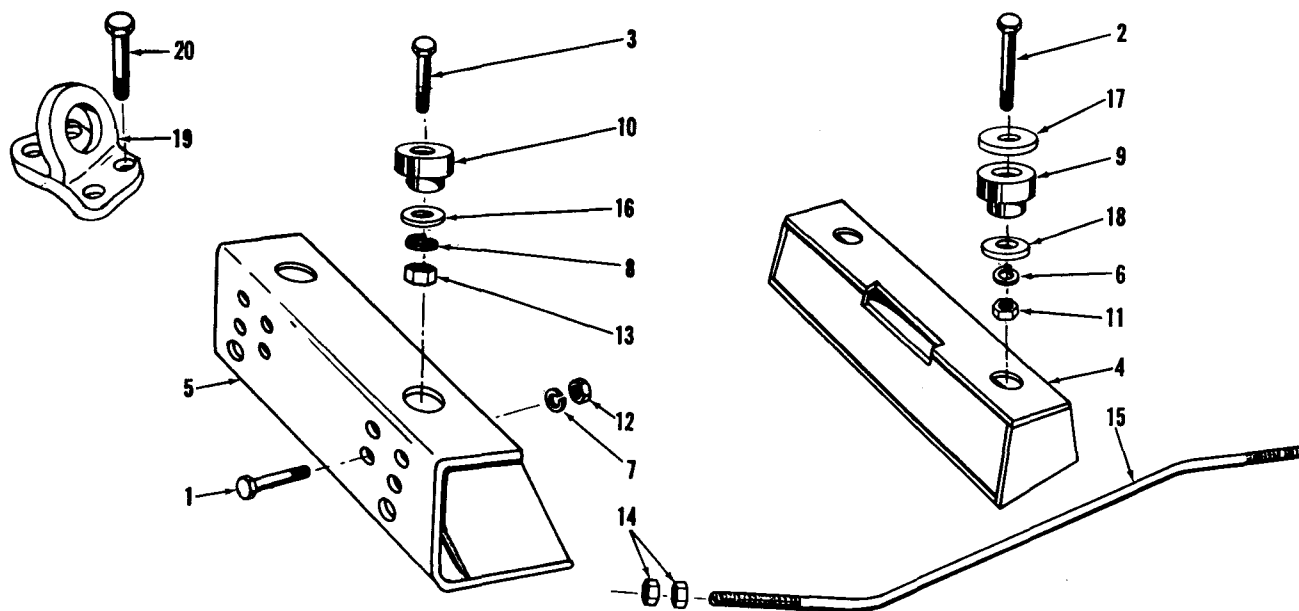


Figure 37  
ENGINE INSTRUMENT PANEL

Part Number	Part Name	No. Req.	Fig. No.	Ref. No.	Part Number	Part Name	No. Req.	Fig. No.	Ref. No.
68860-1	Adapter	1							
68138	Adapter (Male)	1							
66741	Ammeter (30 Amp)	1	37	1					
103317	Bracket, hourmeter	1	37	2					
127839	Bracket (Upper)	1	37	3					
127826	Bracket (Lower)	1	37	4					
108102	Breaker, circuit	1	37	5					
S-122-C	Capscrew (9/16-18 x 7/8")	2							
69793	Capscrew (3/8-24 x 3/4")	2							
S-188-C	Capscrew	2	37	6					
S-1059	Coupling, tube	1							
108098	Cover	1	37	7					
68139	Elbow, hose	1							
S-1047	Elbow, tube	1							
66733	Gauge, oil pressure	1	37	8					
41627-B	Gauge, water temperature	1	37	9					
HS040120OMS	Hose	1							
113310	Hourmeter	1	37	10					
102486	Isolator	3	37	11					
S-609	Lockwasher (9/16")	2							
S-604	Lockwasher (3/8")	2							
S-603	Lockwasher (5/8")	3							
S-607	Lockwasher (.190")	3	27	12					
S-600	Lockwasher (1/4")	2	37	13					
S-259	Nut	3	37	14					
103309	Panel	1	37	15					
103310	Panel (Use with glow plug)	1							
102189	Plate, switch indicator	1	37	16					
69504	Screw	2	37	17					
127814	Screw	12	37	18					
S-2267	Screw	1	37	19					
103240	Screw	3	37	20					
70310	Screw	6	37	21					
67864	Switch, pressure	1							
102057	Switch, starting	1	37	22					
102484	Washer, safety	3	37	23					
103089	Washer	3	37	24					

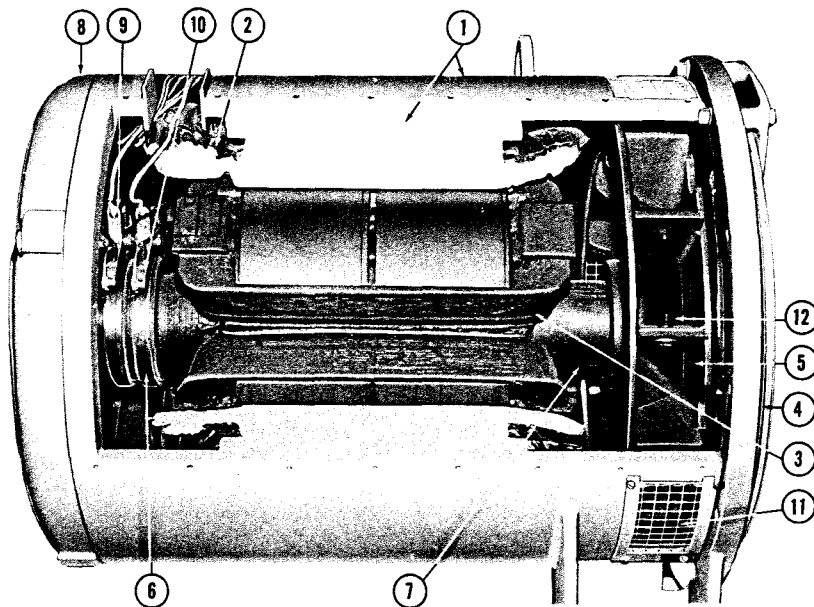
PARTS INDENTED ARE INCLUDED IN THE PART UNDER WHICH THEY ARE INDENTED



CROSSMEMBERS and ENGINE LIFTING BRACKET

Part Number	Part Name	No. Req.	Ref. No.	Part Number	Part Name	No. Req.	Ref. No.
S-113	Capscrew, radiator support to front crossmember	8	1				
S-147-A	Capscrew, generator to crossmember	2	2				
S-154-A	Capscrew	2	3				
166298	Crossmember, main generator	1	4				
160137	Crossmember, front	1	5				
S-611	Lockwasher, rubber mount (rear)	2	6				
S-608	Lockwasher, radiator support to crossmember	8	7				
S-603	Lockwasher, crossmember	2	8				
127426	Mount, rubber (main generator)	2	9				
127419	Mount, rubber	2	10				
S-204	Nut (3/4"-10)	2	11				
S-200	Nut (1/2")	8	12				
S-201	Nut (5/8")	2	13				
S-226	Nut, tie rod (3/4")	8	14				
159006	Rod, tie	2	15				
127471	Washer	2	16				
127455	Washer	2	17				
127454	Washer	2	18				
	LIFTING BRACKET						
170787	Bracket, lifting	1	19				
108602	Capscrew	4	20				

PARTS INDENTED ARE INCLUDED IN THE PART UNDER WHICH THEY ARE INDENTED



MAIN GENERATOR

Part Number	Part Name	No. Req.	Ref. No.	Part Number	Part Name	No. Req.	Ref. No.
158439	Generator (100KW-GS, 75KW-GC at 1800 RPM (60 cycle) or 83.3KW-GS, 62.5KW-GC at 1500 RPM (50 cycle)	1					
169083	Frame and core assembly	1	1				
169084	Windings, stator	1	2				
169085	Rotor assembly	1	3				
169063	Hub, coupling	1	4				
169064	Fan, ventilating	1	5				
169065	Collector assembly	1	6				
169086	Shaft	1	7				
169068	Bearing	1					
169069	Bracket, end	1	8				
169070	Brush holder assembly	1	9				
169071	Stud	1					
169072	Bushing, insulation	1					
169073	Holder, brush	2					
169074	Brush	4	10				
169075	Screen, frame	1	11				
169076	Screen, bracket	1					
169077	Disc, drive	6	12				
169078	Regulator, static exciter	1					
174120	Relay, field flash	1					
S-155	Capscrew	12					
S-150	Capscrew	8					
164479	Decal	2					
S-610	Lockwasher	12					
S-608	Lockwasher	8					

PARTS INDENTED ARE INCLUDED IN THE PART UNDER WHICH THEY ARE INDENTED

Part Number	Part Name	No. Req.	Fig. No.	Ref. No.	Part Number	Part Name	No. Req.	Fig. No.	Ref. No.
	SCR STATIC EXCITER REGULATOR (G-641)					Marathon No. 1132-B. Reference bulletin 983600 page 1-10)	1	30	1
180009	Regulator, SCR static exciter (non paralleling)	1	29		180019	Fuse, current limiting (25A. Marathon No. 1293).	2	30	2
180017	Relay module sub- assembly (Serial Nos. 6001-6100. Marathon No. 1132. Reference bulletin 983600, pages 1-9 and 1-10.)	1			180018	Relay (Fr, 230V A.C. Marathon No. 1257	1	30	3
182902	Relay module sub- assembly. (Serial Nos. 6101-6349. Marathon No. 1132-B. Reference bulletin 983600, pages 1-9 and 1-10)	1			177479	Relay (Dr, 24V D.C. 1132 relay module only. Marathon No. 1258)	1		
					177478	Relay (Dr, 12V D.C. 1132-B relay module only. Marathon No. 1256)	1	30	4
180019	Fuse, current limiting (25A. Marathon No. 1293)	2	30	1	180026	Resistor (R-14. 1132-B relay module only. Marathon No. 1326).	1	30	5
180018	Relay (Fr, 230V A.C. Marathon No. 1257)	1	30	2	180036	Regulator module sub- assembly (Marathon No. 1331)	1	34	
177479	Relay (Dr, 24V D.C. 1132 relay module only. Marathon No. 1258)	1		3	*	Resistor (R8. Marathon No. 1253).	1	31	2
177478	Relay (Dr, 12V D.C. 1132-B relay module only. Marathon No. 1256)	1			*	Resistor (R9. Marathon No. 1254).	1	29	1
180026	Resistor (R-14. 1132-B relay module only. Marathon No. 1326)	1	30	4	180037	Resistor (R8 and R9. Marathon No. 1337)	2		
180027	Regulator module sub- assembly (Marathon No. 1131)	1	31		180029	Bridge module sub- assembly (Marathon No. 1144).	1	32	
*	Resistor (R8. Marathon No. 1253)	1			180028	SCR module sub-assembly (Marathon No. 1143)	1	33	
*	Resistor (R9. Marathon No. 1254)	1	29	1	182908	Wiring harness (Marathon No. 1322)	1		
180037	Resistor (R8 and R9 Marathon No. 1337)	2			<p>* Field replacement of R8 (1253) or R9 (1254) requires two(2) 180037. Marathon No. 1337.</p> <p>NOTE: Model G-641P, Serial Nos. 6450-6499 use R8 and R9, Marathon No. 1337; Cummins No. 180037 resistor as Standard.</p>				
180029	Bridge module sub- assembly (Marathon No. 1144)	1	32			(G-741)			
180028	SCR module sub-assembly (Marathon No. 1143)	1	33		181563	Regulator, SCR static exciter (universal)	1	29	
182907	Wiring harness. (Marathon No. B1135)	1			182902	Relay module sub- assembly (Serial No. 7000 up. Marathon No. 1132-B)	1	30	1
NOTE: G-641 Serial Numbers 6201, 6349 use R8 and R9 Marathon Number 1337; Cummins 180037 Resistor as standard.					180019	Fuse, current limiting (25A. Marathon No. 1293)	2	30	2
	(G-641P)				180018	Relay (Fr, 230V A.C. Marathon No. 1257)	1	30	3
180016	Regulator, SCR static exciter (paralleling)	1	29		177478	Relay (Dr, 12V. Marathon No. 1256)	1	30	4
180017	Relay module sub-assembly (Serial Nos. 6400-6449. Marathon No. 1132. Reference bulletin 983600 page 1-10).	1	30	1	180026	Resistor (R-14, Marathon No. 1326)	1	30	5
182902	Relay module sub-assembly (Serial Nos. 6450-6499.				182903	Regulator module sub- assembly. (Marathon No. 1386)	1	35	
					180037	Resistor (R8 and R9. Marathon No. 1337)	2	35	1
					180028	SCR module sub-assembly (Marathon No 1143)	1	33	

PARTS INDENTED ARE INCLUDED IN THE PART UNDER WHICH THEY ARE INDENTED



Part Number	Part Name	No. Req.	Fig. No.	Ref. No.	Part Number	Part Name	No. Req.	Fig. No.	Ref. No.
180029	Bridge module sub-assembly (Marathon No. 1144)	1	32						
182904	Wiring harness (Marathon No. 1392)	1							
	MOUNTING PARTS								
180039	Chassis, regulator (G-641 G-641P. Marathon No. B-1074)	1							
182905	Chassis, regulator (G-741 Marathon No. 1396)	1	29	2					
180038	Cover, housing (Marathon No. B-1073)	1	29	3					
180047	Grommet (Marathon No. A500235)	1	29	4					
180046	Mount, shock (Marathon No. A500640-1)	4	29	5					
180048	Nameplate, voltage adjust (Marathon No. 1138)	1							
182906	Plate, instrument (G-741 only. Use with 182905) Marathon No. 1394.	1							
	CONVERSION KITS								
180057	Kit, conversion (400 frame) (Use to replace 169078 Basler regulator with Marathon exciter-regulator)	1							
180058	Kit, conversion (500 frame) (Use to replace 169103 Basler regulator with Marathon exciter-regulator)	1							
180059	Kit, conversion (680 frame) (Use to replace 169136 Basler regulator with Marathon exciter-regulator)	1							

PARTS INDENTED ARE INCLUDED IN THE PART UNDER WHICH THEY ARE INDENTED

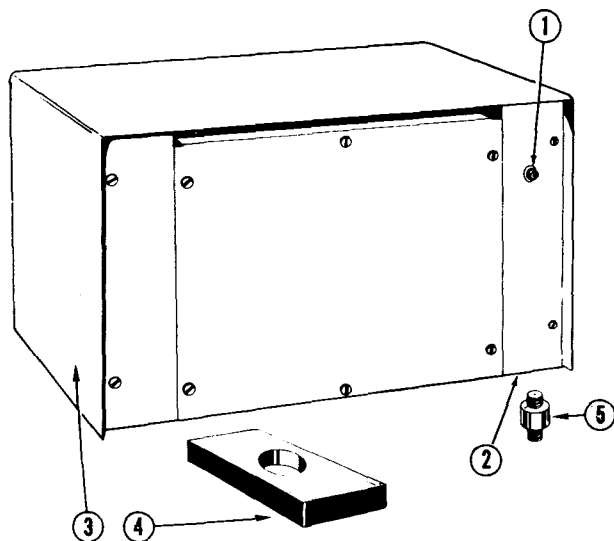


Fig. 29 (SCR STATIC EXCITER-REGULATOR)

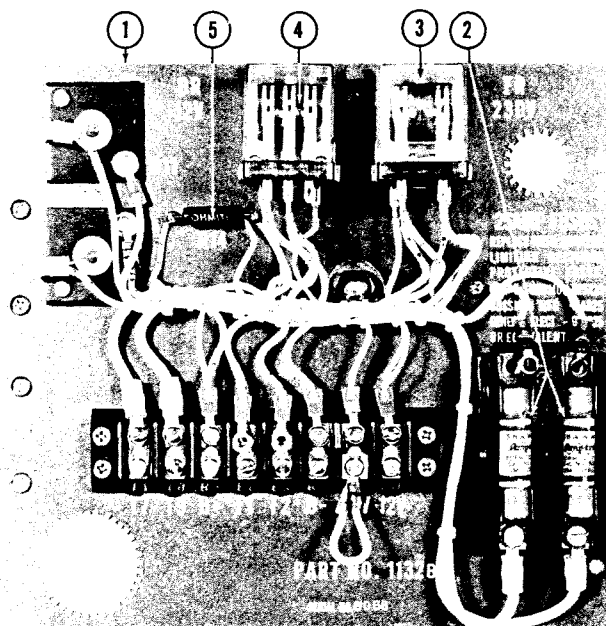


Fig. 30 (RELAY MODULE SUB-ASSEMBLY. 1132-B)

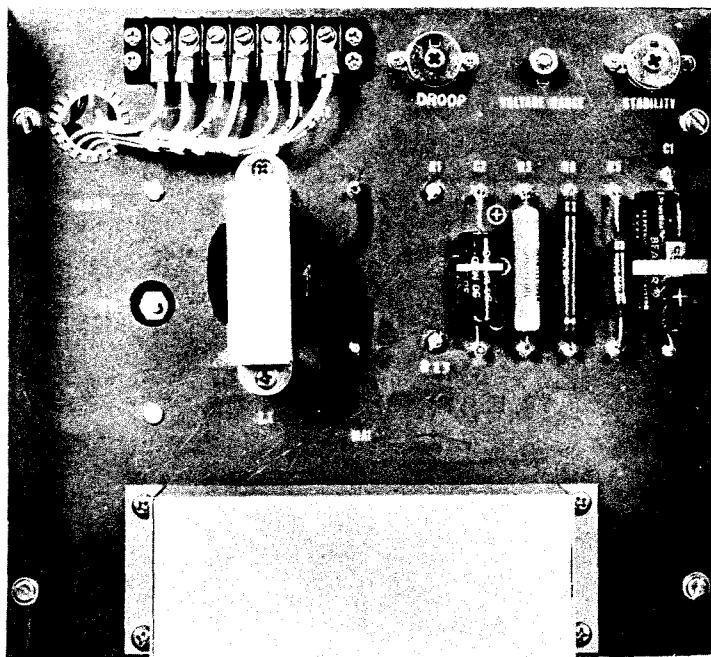


Fig. 31 (REGULATOR MODULE SUB-ASSEMBLY. 1131)

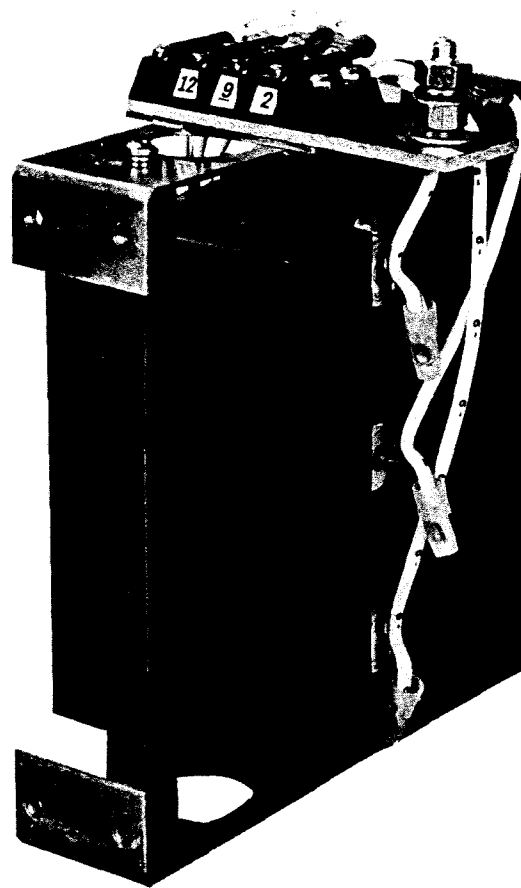


Fig. 32 (BRIDGE MODULE SUB-ASSEMBLY. 1144)

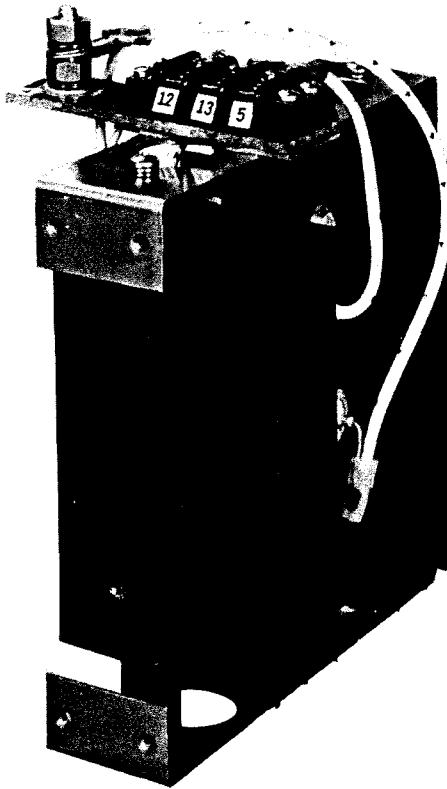


Fig. 33 (SCR MODULE SUB-ASSEMBLY. 1143)

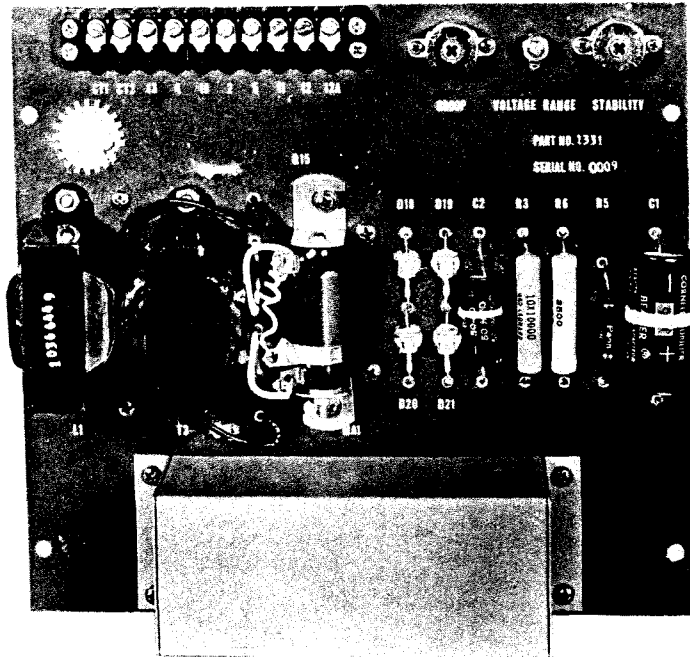


Fig. 34 (REGULATOR MODULE SUB-ASSEMBLY. 1331)

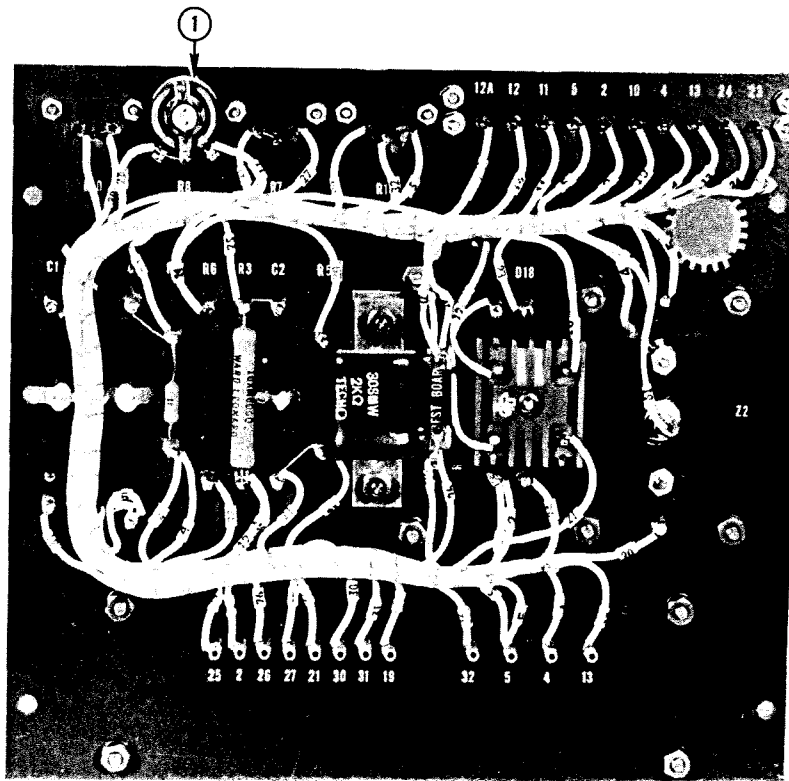
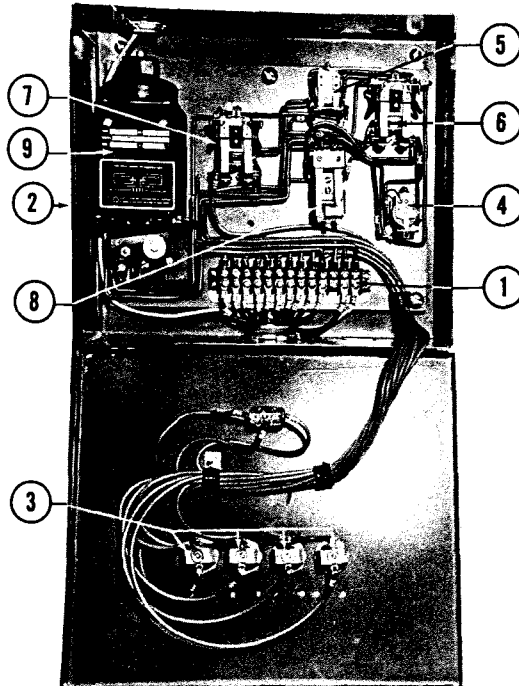


Fig. 35 (REGULATOR MODULE SUB-ASSEMBLY. 1386)



AUTOMATIC START-STOP CRANKING PANEL

Part Number	Part Name	No. Req.	Ref. No.	Part Number	Part Name	No. Req.	Ref. No.
170544	Panel, automatic start-stop cranking (single cycle)	1					
170545	Panel, automatic start-stop cranking (four cycle)	1					
(X4-5)	Base, component mounting	1					
(ESP-303)	Block, terminal (TB)	1	1				
(X4-6)	Cabinet	1	2				
(ESP-552)	Lamps, alarm	4					
(ASP-5)	Nameplate, crank (LOC)	1					
(ASP-8)	Nameplate, manufacturer	1					
(ASP-3)	Nameplate, oil (LO)	1					
(ASP-6)	Nameplate, speed (LOS)	1					
(ASP-4)	Nameplate, water (LW)	1					
(ASP-355)	Number strip, terminal block	1					
(ESP-501)	Receptacles, alarm light (LOC, LO, LW, LOS)	4	3				
(ESP-407)	Relay, alarm (R3)	1	4				
(ESP-420)	Relay, automatic (RI)	1	5				
(ESP-406)	Relay, control (R4)	1	6				
(ESP-406)	Relay, program (R2)	1	7				
(ESP-408)	Relay, sequence (SR)	1	8				
(ESP-101)	Switch, selector (AOM)	1					
(ESP-416)	Timer (G)	1	9				
NOTE: Part numbers in parenthesis are the numbers of Engine Services Inc., Dearborn, Mich.							

PARTS INDENTED ARE INCLUDED IN THE PART UNDER WHICH THEY ARE INDENTED

Part Number	Part Name	No. Req.	Fig. No.	Ref. No.	Part Number	Part Name	No. Req.	Fig. No.	Ref. No.
	GENERATOR CONTROL CABINETS (GENERATOR MOUNTED)					ENGINE ALARM LIGHTS			
	GROUP A				BM-91206	Lights, engine alarm	1		
					159503	Bulb (24V SA-43 ACM)	3		
					159502	Light assembly	3	35	11
					159489	Harness, wiring	1		
					159490	Nameplate	1	35	12
BM-91175	Cabinet, control (Use with 100 KWGS and 75 KW GC 60 cycle generator)	1				AMMETER-VOLTMETER PHASE SELECTOR SWITCH			
159478	Ammeter (AC-0-250-500-A)	1	35	1		GROUP A			
159469	Cabinet	1	35	2					
159477	Damper	4	35	3					
159476	Meter, frequency (60 cycle, 208-240V)	1	35	4					
159471	Nameplate, instrument	1	35	5	BM-91198	Switch, selector (Use with BM-91175 or BM-91189 cabinets)	1		
159470	Nameplate, identification	1	35	6		Harness, wiring	1		
159479	Transformer, current (250/5)	1			159504	Nameplate	1	35	13
159472	Voltmeter (AC-0-300-600V)	1	35	7	159505	Switch	1	35	14
S-600	Lockwasher	4			159506	Transformer (250/5)	2		
S-224	Nut	4			159479				
S-626	Washer	4							
	GROUP B Same as Group A except:					GROUP B Same as Group A except:			
BM-91174	Cabinet, control	1			BM-91197	Switch, selector (Use with BM-91174 and BM-91188 cabinets)	1		
159473	Ammeter (AC-0-150-300-A)	1	35	1		Transformer (150/5)	2		
159474	Transformer, current	1			159474				
	GROUP C Same as Group A except:					GOVERNOR CONTROL SWITCH			
BM-91189	Cabinet, control (Use with 83.3 KWGS and 62.5 KWGC 50 cycle generator)	1			159507	Switch, governor control (Required with motorized head on governor)	1	35	15
159500	Meter, frequency (50 cycle, 173-208 volt)	1	35	4					
	GROUP D Same as Group A except:								
BM-91188	Cabinet, control	1							
159473	Ammeter	1	35	1					
159500	Meter, frequency (50 cycle, 173-208 volt)	1	35	4					
159474	Transformer, current (150/5)	1							
	SYNCHRONIZING PARALLELING ASSEMBLY								
BM-91208	Lights, synchronizing	1							
159513	Bulb (6W-30V)	2							
159511	Light assembly, clear lens	2	35	8					
159512	Harness, wire	1							
159510	Nameplate, switch	1	35	9					
159514	Resistor	1							
159516	Resistor (100 ohm-25W)	1							
159509	Switch	1	35	10					
159515	Transformer (550/1)	1							

PARTS INDENTED ARE INCLUDED IN THE PART UNDER WHICH THEY ARE INDENTED

Part Number	Part Name	No. Req.	Fig. No.	Ref. No.	Part Number	Part Name	No. Req.	Fig. No.	Ref. No.
	CONTROL CABINETS (WALL MOUNTED)				175894	Switch	1	36	7
					159475	Transformer (250/5A)	2		
	GROUP A				177842	Switch, ammeter phase selector (Use with 177805, 177807 control panels)	1		
177807	Cabinet, control (Use with 208-240 V, 60 cycle generator)	1			175895	Nameplate	1	36	6
159525	Ammeter (AC, 0-500-A)	1	36	1	175894	Switch	1	36	7
138499	Breaker, circuit (400 A Tr, 400 A Fr)	1	36	2	159485	Transformer (500/5)	2		
159522	Block, fuse	1							
159521	Block terminal	1							
159519	Cabinet	1	36	3					
159476	Meter, frequency (60 cycle)	1	36	4	177857	Synchronizing paralleling assembly (All wall cabinets)	1		
159485	Transformer, current (500 5/A)	1			159513	Bulb (6W, 30V)	2		
159486	Voltmeter (AC, 0-300 V)	1	36	5	159511	Light assembly	2	36	8
					175899	Nameplate	1	36	9
	GROUP B				175897	Resistor (10 ohm)	1		
					175898	Switch	1		
					159515	Transformer (550/1)	1		
177808	Cabinet, control (Use with 416-480 V, 60 cycle generator)	1							
159526	Ammeter (AC, 0-250 A)	1	36	1					
138515	Breaker, circuit (200 Tr, 225 A Fr)	1	36	2	177847	Voltmeter-ammeter phase selector switch (Use with 177806, 177808 cabinets)	1		
159522	Block, fuse	1							
159521	Block, terminal	1			159505	Nameplate	1	36	6
159519	Cabinet	1	36	3	159506	Switch	1	36	7
159476	Meter, frequency (60 cycle)	1	36	4	159475	Transformer (250/5A)	2		
159479	Transformer, current (250/5A)	1			177851	Voltmeter-ammeter phase selector switch (Use with 177805, 177807 cabinets)	1		
159524	Voltmeter (AC, 0-600 V)	1	36	5					
	GROUP C				159505	Nameplate	1	36	6
	Same as Group A except:				159506	Switch	1	36	7
					159485	Transformer (500/5A)	2		
177805	Cabinet, control (Use with 173-208 V, 50 cycle generator)	1							
159500	Meter, frequency (50 cycle)	1	36	4	177861	Wattmeter (Use with 177805, 177807 cabinets)	1		
	GROUP D				175910	Transformer (500/5A, 10 VA)	3		
	Same as Group B except:				175902	Wattmeter (150 KW)	1	36	10
					177862	Wattmeter (Use with 177806, 177807 cabinets)	1		
177806	Cabinet, control (Use with 346-416 V, 50 cycle generator)	1			175907	Transformer (250/5A, 10 VA)	3		
159500	Meter, frequency (50 cycle)	1	36	4	175902	Wattmeter (150 KW)	1	36	10
	AMMETER PHASE SELECTOR SWITCHES								
177839	Switch, ammeter phase selector (Use with 177806, 177808 control cabinets)	1							
175895	Nameplate	1	36	6	159507	GOVERNOR CONTROL SWITCH Switch, governor control	1	36	11

PARTS INDENTED ARE INCLUDED IN THE PART UNDER WHICH THEY ARE INDENTED

Part Number	Part Name	No. Req.	Fig. No.	Ref. No.	Part Number	Part Name	No. Req.	Fig. No.	Ref. No.
138823	BATTERY-CHARGING D.C. AMMETER and SWITCH  Ammeter and switch battery charging (D.C.)	1	36	12					
159475	VOLTAGE ADJUSTING RHEOSTAT  Rheostat, voltage adjusting	1	36	13					
144582	BATTERY-CHARGING D.C. VOLTMETER  Voltmeter, battery charging (D.C.)	1	36	14					

PARTS INDENTED ARE INCLUDED IN THE PART UNDER WHICH THEY ARE INDENTED

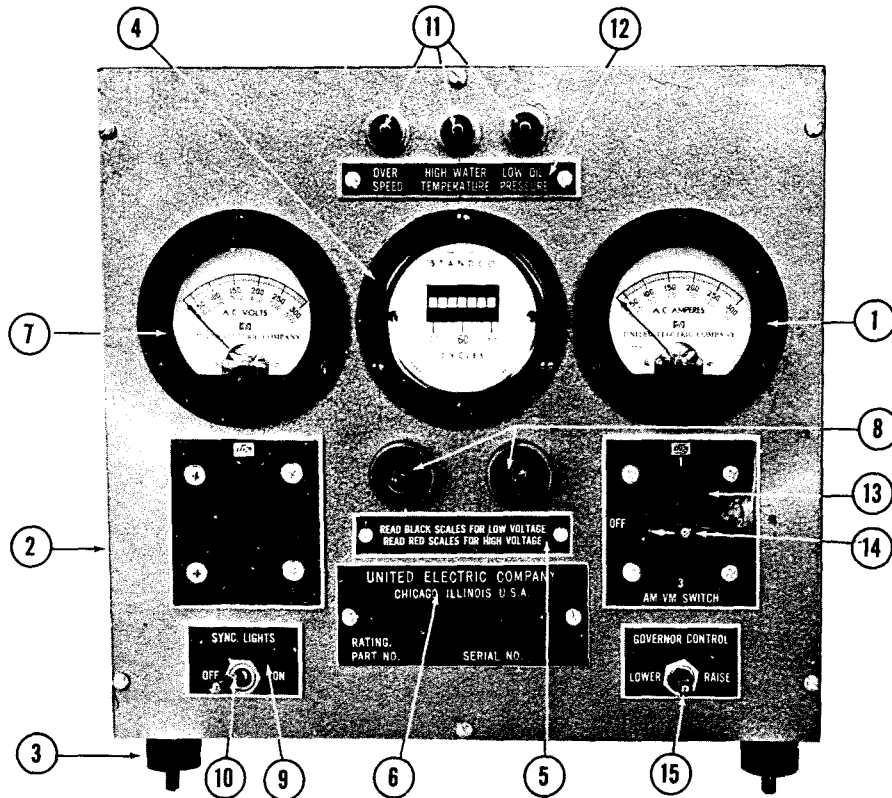


Fig. 35 (GENERATOR-CONTROL CABINET) (GENERATOR MOUNTED)

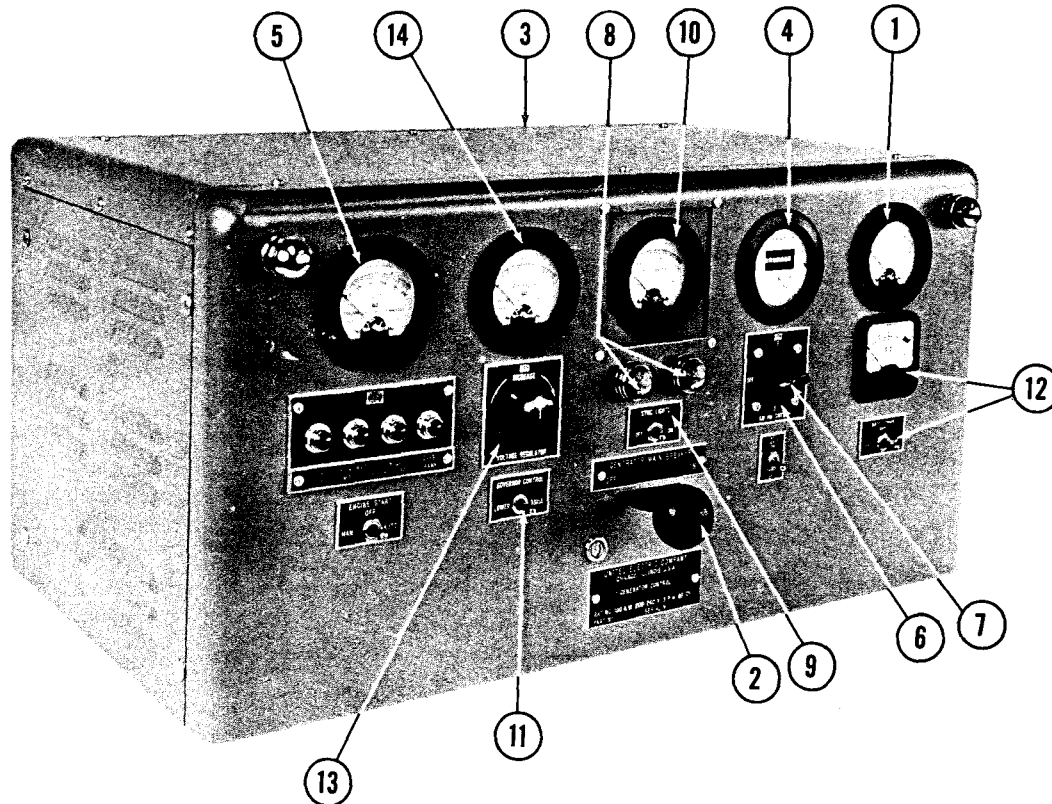


Fig. 36 (GENERATOR-CONTROL CABINET) (WALL MOUNTED)



OPTIONAL EQUIPMENT

OH1

Part Number	Part Name	No. Req.	Fig. No.	Ref. No.	Part Number	Part Name	No. Req.	Fig. No.	Ref. No.
	LUBRICATING OIL COOLER				70624	"O" Ring	4		
BM-70593	Cooler assembly, oil (Use with heat exchanger)	1			BM-90021	Plate and ring assembly	6		
S-126	Capscrew	4			156334	Plate, retaining	6		
139329	Cover	1			160196	Ring, sealing	6		
110848	Element	1				THERMOSTAT HOUSING			
68210	Gasket, cover	1			BM-73390	Housing, thermostat (146097) (Use with water-cooled exhaust manifold)	1		
127863	Housing	1			130740	Gasket, housing	1		
S-604	Lockwasher	4			S-199-A	Capscrew	4		
148293	"O" Ring	2			S-923-E	Cock, drain	1		
S-995	Plug, pipe	1			S-604	Lockwasher	4		
S-910-B	Plug, pipe	1			148629	Spacer, thermostat housing	1		
110827	Retainer, "O" ring	1			135675	Thermostat (170° to 185° F)	1		
	SEA WATER PUMP								
21731	Pump, sea water	1							
102661	Bearing, ball	1							
102660	Body, pump	1							
105598	Cover, end	1							
105594	Gasket, cover	1							
21601-R	Impeller	1							
S-327	Key, shaft	1							
S-16255	Ring, snap	1							
102655	Ring, snap	1							
21601-A	Screw	6							
S-16103	Seal	1							
112054	Seal, bearing	1							
112001	Seal, spline	1							
136519	Seal assembly	1							
102664	Shaft	1							
21601-H	Slinger	1							
136518	Wear plate assembly	1							
151898	Impeller (cold water)	1							
	CORROSION RESISTOR								
132716	Resistor, corrosion	1							
132717	Body	1							
70223	Bolt	2							
132718	Cover	1							
132732	Element	1							
132730	Gasket	1							
132719	Plate	2							
139090	Plug	2							
132731	Spring	1							
70233	Washer	1							
135970	Decal	1							
157098	Valve, shut-off	2							
	WATER MANIFOLD								
S-138-A	Capscrew	12							
43828-C	Clamp, hose	2							
70627	Coupling	2							
63241-J	Hose	1							
S-605	Lockwasher	12							
102215	Manifold, water (front)	1							
44733	Manifold, water (center)	1							
102219	Manifold, water (rear)	1							

PARTS INDENTED ARE INCLUDED IN THE PART UNDER WHICH THEY ARE INDENTED

OPTIONAL EQUIPMENT

OH2

Part Number	Part Name	No. Req.	Fig. No.	Ref. No.	Part Number	Part Name	No. Req.	Fig. No.	Ref. No.
	HEAT EXCHANGER				62543	Flange, exhaust	1		
					67971	Flange, blind	1		
					147263	Gasket, intake and exhaust manifold	3		
137052	Housing, heat exchanger	1							
137069	Brace	1			139266	Gasket, flange	2		
137065	Bracket	1			65399	Gasket, water inlet connection	1		
S-929-B	Bushing, pipe	1			S-604	Lockwasher (3/8")	8		
135588	Cap, housing	1			S-608	Lockwasher (1/2")	8		
S-102-D	Capscrew	3			S-205	Nut (3/8")	4		
S-103-D	Capscrew	10			105199	Pin, dowel	2		
S-112	Capscrew	10			S-915-A	Plug, pipe (1/2")	1		
108604	Capscrew	2			S-602	Washer	8		
S-145	Capscrew	2			S-679	Washer	4		
S-109	Capscrew	1							
S-140-C	Capscrew	1							
43828-E	Clamp, hose	4				EXHAUST SILENCERS and FLEXIBLE EXHAUST PIPE			
S-962-E	Cock, drain	1							
44426	Connection	1							
137061	Connection, outlet	1			166607	Silencer (Industrial use)	1		
137062	Connection, inlet	1			166608	Silencer (Residential and critical area use)	1		
137057	Cover, housing	1			137489	Pipe, flexible exhaust (20" long, 4" N.P.T. female ends. Includes one close nipple)	1		
137059	Cover, housing	1							
171995	Element (124 tubes, brass)	1							
171997	Element (124 tubes, copper-nickel)	1							
137067	Gasket, cover to housing	1							
70168	Gasket, sea water pump	1							
137076	Gasket, outlet connection	1							
137071	Gasket, inlet connection	1							
137155	Gasket, cover to housing	1							
135585	Gasket	1							
64030	Hose	1							
9784-1B	Hose	1							
S-604	Lockwasher	25							
S-607	Lockwasher	4							
S-608	Lockwasher	4							
S-610	Lockwasher	1							
S-2902	Neck, filler	1							
137074	"O" Ring	1							
137075	"O" Ring	1							
68241	Plug, zinc electrode	3							
131449	Screw (round head)	4							
65434-A	Spacer, compression release bracket	2							
137054	Support	1							
135587	Valve	1							
S-622	Washer, plain	1							
	EXHAUST MANIFOLD (WATER-COOLED)								
BM-65839	Manifold, exhaust (137070)	1							
S-924	Plug, pipe	1							
S-109	Capscrew (3/8-16 UNC-2A, 7/8")	4							
S-125	Capscrew (1/2-13 UNC-2A, 2")	4							
S-145	Capscrew (1/2-13 UNC-2A, 1-1/4")	4							
105289	Clamp	6							
40774	Connection, water inlet	1							

PARTS INDENTED ARE INCLUDED IN THE PART UNDER WHICH THEY ARE INDENTED

OPTIONAL EQUIPMENT

OH3

Part Number	Part Name	No. Req.	Fig. No.	Ref. No.	Part Number	Part Name	No. Req.	Fig. No.	Ref. No.
	AIR MANIFOLD CONNECTION					AIR CLEANER			
21313-1	Connection, air manifold (Use with glow plug)	1			106959	Cleaner, air (oil bath)	1		
					111568	Body	1		
					168385	Gasket	1		
					111585	Prefilter	1		
					111573	Rod and band	1		
					111580	Nut, wing	2		
					111578	Rod	2		
					111591	Cup assembly	1		
125880	Adapter, nozzle	1			111596	Cup	1		
68139	Elbow, hose	1			111603	Disc	1		
67946	Gasket, copper	1			111604	Decal	1		
68812	Glow plug	1							
118273	Gasket, glow plug	1							
68178-1	Lockplate, nozzle	1			163978	Cleaner, air (Donacclone heavy duty dry-type, 10" diameter)	1		
69215	Nozzle	1							
68061-A	"O" ring	1							
43468	Pin, groove	1							
68813	Resistor	1							
	(HAND-PRIMING PUMP)					FUEL PUMP			
						FUEL TRANSFER PUMP and WOODWARD GOVERNOR DRIVE			
100046	Pump, priming	1							
100050	Ball, check, inlet and outlet	2			BM-93777	Drive, fuel pump, fuel transfer pump and Woodward Governor (Use with 170168 transfer pump)	1		
100053	Barrel, pump	1							
100047	Body	1			170166	Adapter, transfer pump	1		
101150	Guide, piston rod	1			109354	Adapter, tachometer	1		
100058	Knob	1			109401	Bearing	2		
100060	Locknut, piston	1			S-16073	Bearing	1		
100048	Locknut, panel mounting	3			9052-1	Cap, dust	1		
100055	Nut, sealing ring	1			102974	Coupling	1		
68061-A	"O" ring	2			109359	Gear, tachometer drive	1		
100054	Pin, sealing	1			109360	Gear	1		
100059	Pin, piston stop	1			123128	Gear, accessory drive	1		
100051	Retainer, spring	1			114645	Gear, governor drive	1		
100061	Rod, piston	1			S-306	Key	2		
100052	Spring, inlet and outlet	1			69550	Key	1		
100056	Spring, sealing	1			70897	Nut	1		
100049	Washer	1			101453	Ring, retaining	1		
	CHEVRON				106339	Seal, oil	1		
	(ETHER CAPSULE)				109341	Seal, oil	1		
					114515	Seal, oil	1		
43150	Aid, chevron (ether capsule)	1			127846	Shaft, accessory drive	1		
					170167	Shaft, hourmeter	1		
					110284	Spacer, bearing	1		
					114644	Spacer, accessory drive	1		
					170169	Support	1		
					S-670	Washer	1		
	PREHEATER								
	(KIM HOTSTART)								
172565	Kim Hotstart (110 volts, 2000 watts)	1							
172566	Kim Hotstart (220 volts, 2000 watts)	1							
115032	Kim Hotstart (110 volts, 2500 watts)	1							
110749	Kim Hotstart (220 volts, 2500 watts)	1							

PARTS INDENTED ARE INCLUDED IN THE PART UNDER WHICH THEY ARE INDENTED

OPTIONAL EQUIPMENT

OH4

Part Number	Part Name	No. Req.	Fig. No.	Ref. No.	Part Number	Part Name	No. Req.	Fig. No.	Ref. No.
157979	Governor, Woodward (SG, 24 volt. Same as 111674 except motorized head)	1			21576-AR	Spring, speeder	1		
147606	Governor, Woodward (PSG, 24 volt. Same as 21576 except motorized head.)	1			21576-B	Valve assembly, relief	1		
21576	Governor, Woodward (PSG. Adjustable for 0-5% speed droop)	1			21576-Z	Washer, bracket	2		
21576-G	Ball head assembly	1			21576-AF	Washer, case to base	3		
21576-F	Base assembly	1			21576-AN	Washer, terminal lever	2		
21576-Q	Bearing thrust	2			21576-AP	Washer, piston stop	1		
21576-E	Bushing assembly, pilot valve	1			21576-BJ	Washer, copper	1		
21576-AV	Bushing, compensating	1			21576-U	Washer, droop bracket	1		
21576-H	Bracket assembly, speed droop	1							
21576-L	Cap, spacer	1				STARTING MOTOR			
21576-J	Case assembly	1			135162	Starting motor, Sprag type clutch (24 volt. Recommended with 176979 circuit breaker for automatic start.)			
21576-BC	Cover	1							
21576-P	Gasket	1				AIR STARTER			
21576-AS	Gasket	3			154696	Starter, air	1		
21576-C	Gear assembly, idler	1			154698	Cock, relay valve stop	1		
21576-BF	Lever, terminal	1			S-658	Nipple, relay valve (1" close)	2		
21576-D	Linkage assembly	1			154697	Tee (1" x 1" x 1-1/4")	1		
21576-AU	Lockwasher, cover	3			154699	Valve, air starter relay	1		
21576-BB	Nut, pilot valve plunger	1			154706	Valve, air starter control (manual)	1		
21576-AE	Nut, piston stop	1			170770	Valve, air starter control (24-volt)	1		
21576-AA	Nut, high-speed stop	1							
21576-AC	Nut, wing, low-speed stop	1				AIR STARTER			
21576-S	Pin, cotter, speed adjusting shaft	1				AIR COMPRESSOR			
21576-T	Pin, dowel	1			BM-25207	Engine and compressor assembly	1		
21576-AW	Piston, power	1			20955	Base, auxiliary starting	1		
21576-BA	Piston, buffer	1			69307	Belt, air compressor drive	2		
21576-X	Plug, pipe	1			S-982	Bushing, pipe, air coupling	1		
21576-Y	Plug, pipe	3			S-103-D	Capscrew, air compressor to base	4		
21576-V	Plug, pipe (1/8")	2			S-149-A	Capscrew, engine to base	4		
21576-W	Plug, tapered	1			S-2238-A	Cleaner, compressor air	1		
21576-AX	Plunger, pilot	1			43472	Compressor, air starting (Quincy)	1		
21576-AT	Ring, oil seal	1			S-988	Elbow, compressor, air cleaner	1		
21576-AL	Ring, snap	1			69306	Engine, auxiliary air starting	1		
21576-AG	Ring, snap	1			8348	Key, pulley	1		
21576-K	Ring, snap	1			S-604	Lockwasher, compressor to base	4		
21576-AB	Screw, low-speed stop	1			S-604	Lockwasher, engine to base	4		
21576-AD	Screw, case to base	3			S-972-D	Nipple	1		
21576-AH	Screw, terminal lever	3			S-223	Nut, engine to base	4		
21576-AJ	Screw, cover to case	1			62900-1	Pulley, drive	1		
21576-AL	Screw, high-speed stop	1			7016-1	Strap	2		
21576-AM	Screw, cover to case	2				COMPRESSOR AIR TANK			
21576-BH	Screw, vent (1/4-28 x 3/8 hex-head)	1			S-1723	Tank, air (5.6 cu.ft.)	1		
21576-BD	Screw, power piston stop	1							
21576-AY	Seat, buffer spring	1							
21576-M	Screw, droop adjusting	1							
21576-R	Seal, oil	4							
21576-AZ	Seat, speeder spring	1							
21576-BE	Shaft, terminal (long)	1							
21576-BG	Shaft, terminal (short)	1							
21576-N	Shaft, speed adjusting	1							
21576-A	Sleeve assembly, speed adjusting	1							
21576-AQ	Spring, buffer	2							

PARTS INDENTED ARE INCLUDED IN THE PART UNDER WHICH THEY ARE INDENTED

## 0H5

**PARTS INDENTED ARE INCLUDED IN THE PART UNDER WHICH THEY ARE INDENTED**