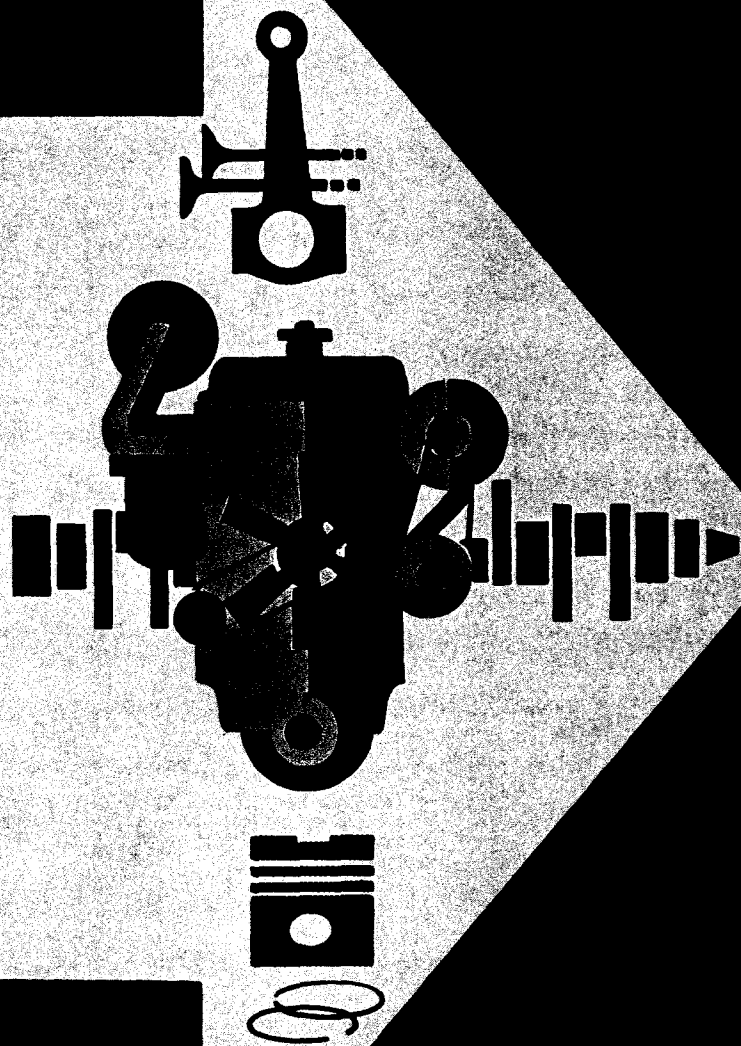


CUMMINS

PARTS BOOK

V8-265-B MODEL

BULLETIN 966991



PARTS ORDERING FOR.....

Genuine Cummins Parts and service facilities are world-wide. There are more than 900 Cummins Sales and Service locations in the principal cities of the United States and Canada, and more than 200 Sales and Service locations situated elsewhere throughout the free world. Each distribution outlet is thoroughly equipped with technical data, factory-trained mechanics, modern equipment and a full, adequate stock of Genuine Cummins Parts.

For quicker and better service, your parts requirements should be ordered from your nearest authorized Cummins Distributor or Dealer. At any of the locations prompt, intelligent, courteous service is a basic trademark. Each is ready and eager to help in every possible way through personal contact or through the mail — at your convenience.

The satisfactory ordering and receiving of parts by the purchaser is greatly dependent upon the proper use of available information. In order that all avoidable errors may be eliminated, the following instructions are offered as the purchaser's guide:

1. Write your order clearly, using a typewriter if possible.
2. Be sure to list the correct part number. If in doubt as to the correct part number, state the model and serial number of the engine on which the part is to be used. Part numbers are usually located in various places on the part itself.
3. When possible, arrange your purchase order in part number numerical sequence.
4. Always specify shipping instructions — "Best Way" is satisfactory if you have no preference.
5. State your company name and shipping address clearly.

Genuine Cummins Parts mean QUALITY! They're designed and engineered to fit best in your Cummins Diesel. Each part is made of the highest quality material — on the most accurate of machines — by the top craftsmen of the trade.

You can be sure a Genuine Cummins Part will fit better — do the job better — lessen the chances of costly breakdown. When you buy replacement parts, buy quality. Buy Genuine Cummins Parts!

YOU OWN THE BEST . . . REPAIR WITH THE BEST

V8-265-B DIESEL ENGINE

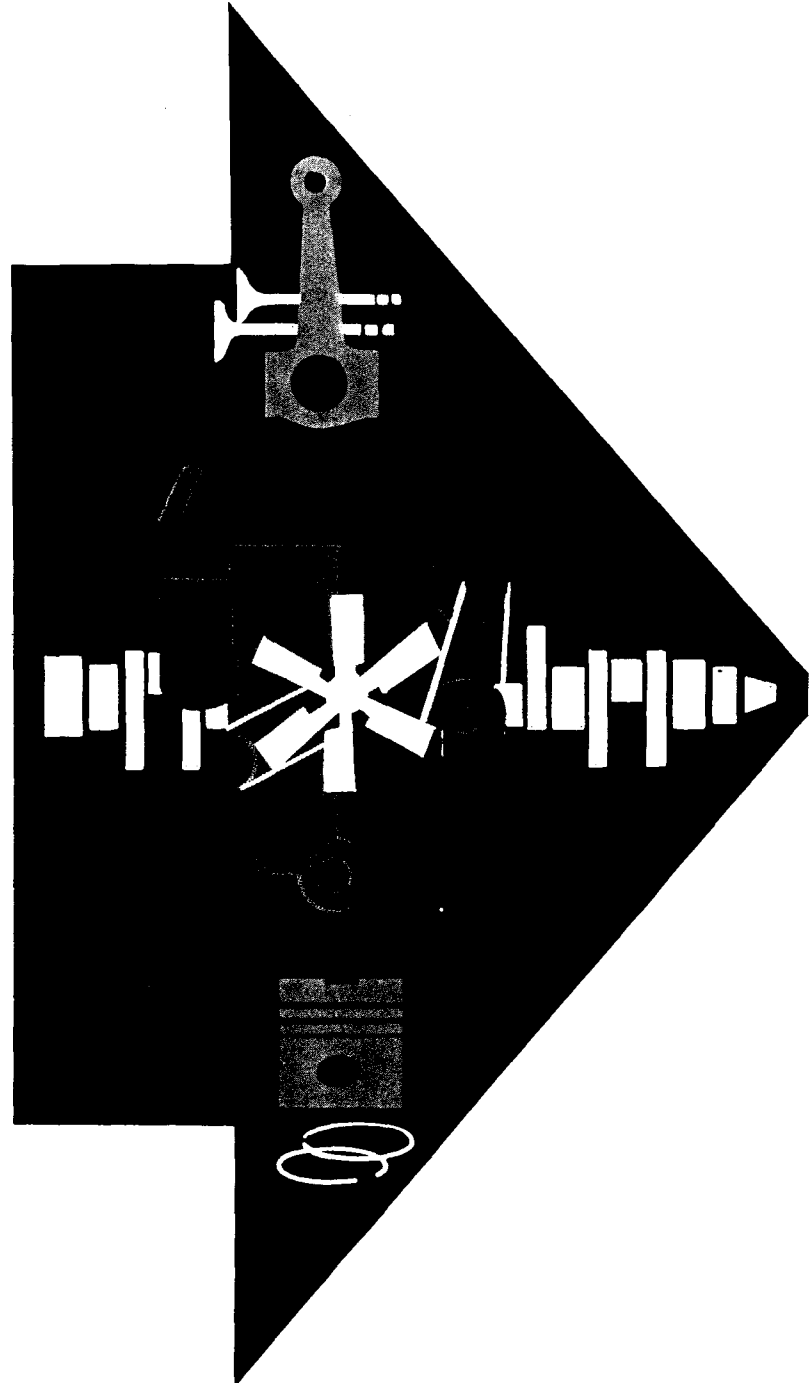
CUMMINS ENGINE COMPANY, INC.

COLUMBUS, INDIANA

PRINTED IN U.S.A.

PRICE \$.25

COPYRIGHT 1963



SPECIAL PARTS

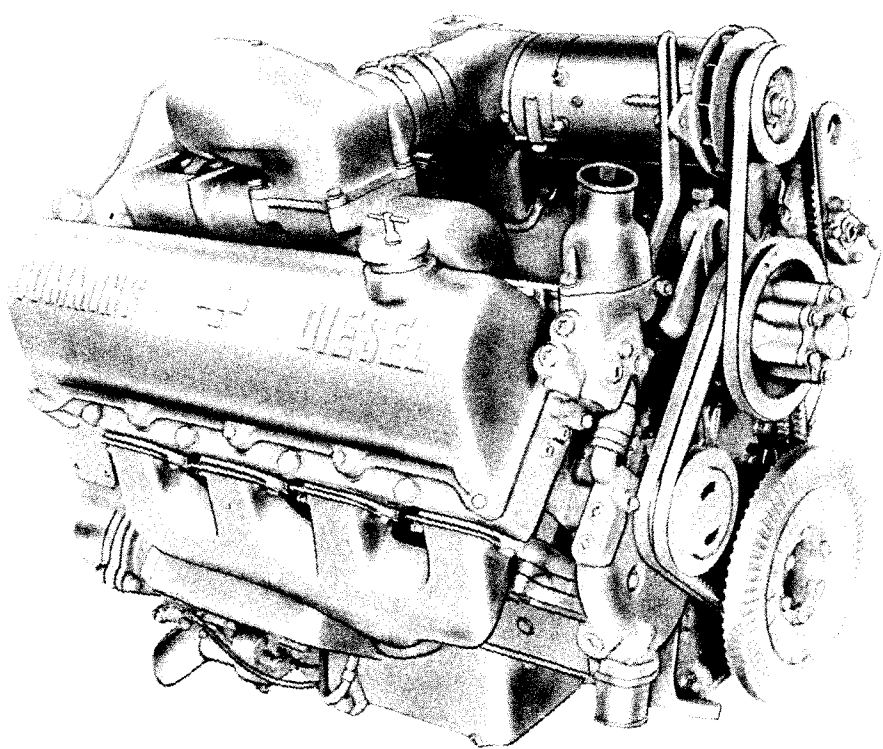
This Parts Book includes those parts that are normally used on our standard engine model. Special Parts peculiar to engine serial No. _____ are listed on the form below. To make certain you have ordered correct parts, refer to this form before submitting Parts Order.

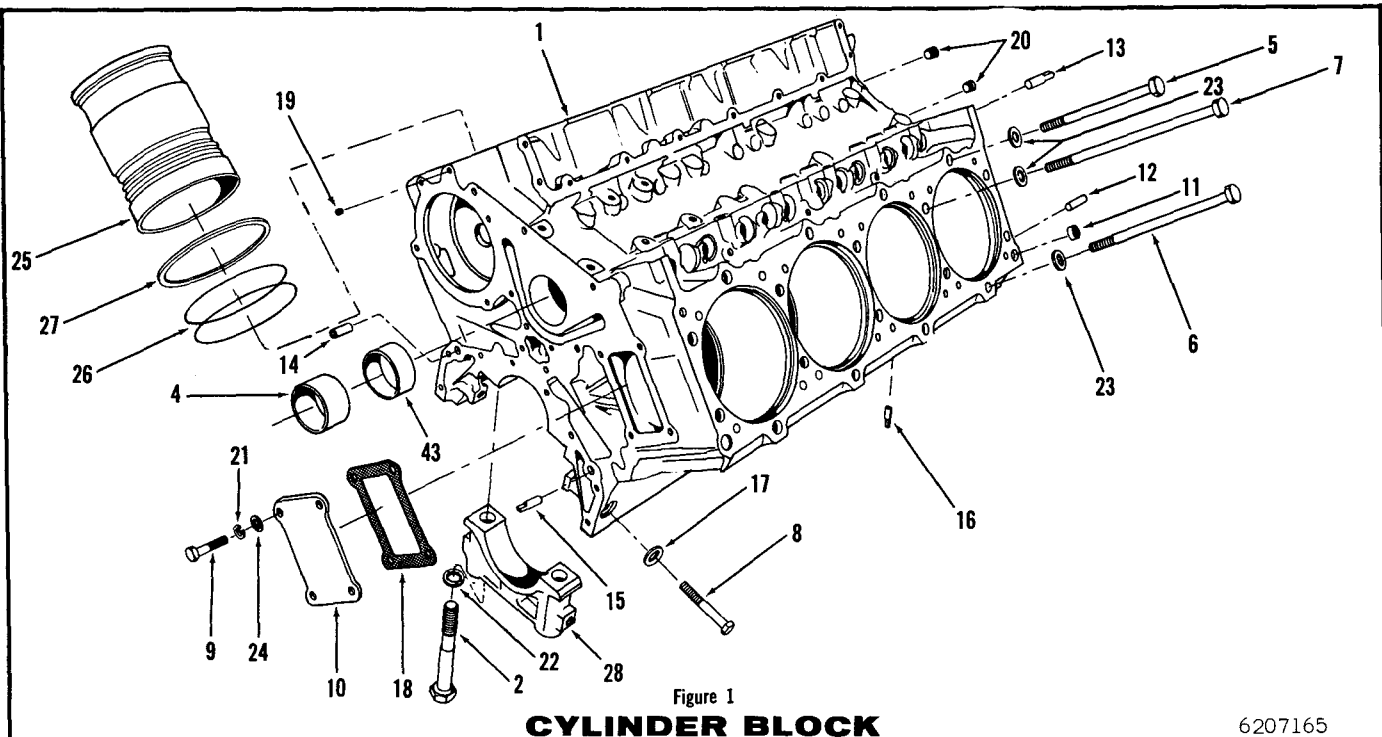
[illegible]

Cummins Distributor _____

CONTENTS

DESCRIPTION	PAGE
Cylinder Block - - - - -	1
Camshaft Bushing, Cylinder Liner and Main Bearing Caps	
Crankshaft, Main Bearings and Vibration Damper	2-3
Connecting Rod, Piston and Rings	4
Front Cover - - - - -	5
Camshaft and Camshaft Cover	6
Pushrods and Tappets	7
Rocker Levers - - - - -	8
Cylinder Head - - - - -	9
Cylinder Head Cover - - - - -	10
Crankcase Breather	
Gear Housing - - - - -	11
Oil Pan, Dipstick and Tube	12
Lubricating Oil Pump	13
Lubricating Oil Filter	14
Lubricating Oil Cooler	15
Water Pump and Pulley	16
Fan Hub and Fan	17
Thermostat Housing and Water Connection	18
Corrosion Resistor	19
Air Intake Manifold and Connection	20
Exhaust Manifold	21
Air Compressor	22-23
Air Cleaner	24
PT Fuel System	25-26
Fuel Pump Damper, Gear Pump and Fuel Filter, Shutdown Valve, Fuel Tubing and Injector	
Electrical Equipment	27
Flywheel, Ring Gear, and Gasket Sets	28

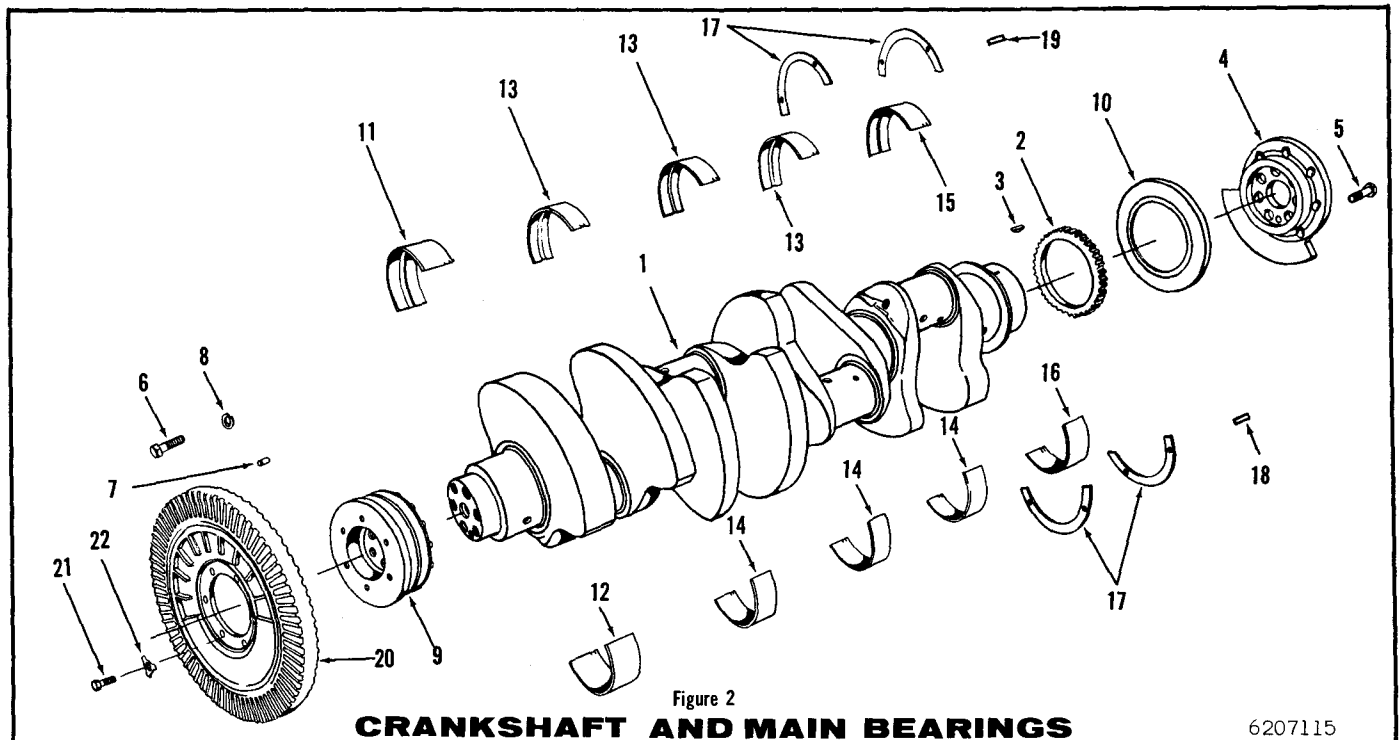




6207165

Part Number	Part Name	No. Req.	Fig. No.	Ref. No.	Part Number	Part Name	No. Req.	Fig. No.	Ref. No.
BM-77405	Block, cylinder (157440)	1	1	1	127316	Washer, cylinder head capscrew	36	1	23
148001	Bolt, main bearing cap	10	1	2					
148210	Bushing, camshaft (No. 2,3,4)	3	1	3	S-602	Washer, water header	4	1	24
147160	Bushing, camshaft (No. 1,5)	2	1	4	154950	Liner, cylinder	8	1	25
151348	Capscrew, cylinder head	16	1	5	155609	Nameplate	1		
151349	Capscrew, cylinder head	10	1	6	122929	Packing, cylinder liner	16	1	26
151350	Capscrew, cylinder head	10	1	7	155172	Ring, liner sealing	8	1	27
S-136	Capscrew, main bearing, side locking	10	1	8	151106	Dowel, gear housing to block (.015" O/S)(Diamond)	Use		
S-172-B	Capscrew, water header cover	4	1	9	151107	Dowel, gear housing to block (.030" O/S)(Diamond)	As		
151249	Cover, water header	1	1	10	151108	Dowel, gear housing to block (.040" O/S)(Diamond)			
100973	Dowel, ring, cylinder head to block	4	1	11	151103	Dowel, gear housing to block (.015" O/S)(Master)			
150073	Dowel, gear housing to block (Master)	1	1	12	151104	Dowel, gear housing to block (.030" O/S)(Master)	Req d.		
150118	Dowel, gear housing to block (Diamond)	1	1	13	151105	Dowel, gear housing to block (.040" O/S)(Master)			
70645	Dowel, front cover to block (Master)	1	1	14	161950	Cap, main bearing (semi-finished) front	1	1	28
68568	Dowel, front cover to block (Diamond)	1	1	15	161951	Cap, main bearing (semi-finished) No. 234	3	1	28
67211	Dowel, rear main bearing cap	2	1	16	158885	Cap, main bearing (semi-finished) rear	1	1	28
70674	Dyna-seal, main bearing capscrew	10	1	17					
151781	Gasket, water header cover	1	1	18					
S-911-B	Plug, pipe	2	1	19					
S-915-A	Plug, pipe	4	1	20					
S-604	Lockwasher, water header cover	4	1	21					
140218	Washer	10	1	22					

PARTS INDENTED ARE INCLUDED IN THE PART UNDER WHICH THEY ARE INDENTED



6207115

Part Number	Part Name	No. Req.	Fig. No.	Ref. No.	Part Number	Part Name	No. Req.	Fig. No.	Ref. No.
BM-74574	Crankshaft assembly (8-10 pitch gear)	1			150100	Half-ring, crankshaft thrust	4	2	17
145830	Crankshaft	1	2	1	BM-71631	Bearing set, main (.010)	1		
150138	Gear, crankshaft (8-10 pitch)	1	2	2	146591	Bearing, main (No. 1 upper)	1	2	11
144131	Key, gear	1	2	3	140081	Bearing, main (No. 1 lower)	1	2	12
143667	Adapter, flywheel to crankshaft	1	2	4	146601	Bearing, main (No. 2,3,4 upper)	3	2	13
140566	Capscrew, adapter to crankshaft	7	2	5	140091	Bearing, main (No. 2,3,4, lower)	3	2	14
140567	Capscrew, flywheel to adapter	8			146611	Bearing, main (No. 5 upper)	1	2	15
S-172-A	Capscrew, pulley	6	2	6	140101	Bearing, main (No. 5 lower)	1	2	16
69519	Dowel, pulley	1	2	7	150100	Half-ring, crankshaft thrust	4	2	17
S-608	Lockwasher, pulley	6	2	8	BM-71632	Bearing set, main (.020)	1		
156288	Pulley, crankshaft (high mount fan)	1	2	9	146592	Bearing, main (No. 1 upper)	1	2	11
158257	Pulley, crankshaft (high mount fan)	1			140082	Bearing, main (No. 1 lower)	1	2	12
154167	Slinger, oil	1	2	10	146602	Bearing, main (No. 2,3,4, upper)	3	2	13
BM-71630	Bearing set, main (std.)	1			140092	Bearing, main (No. 2,3,4, lower)	3	2	14
146590	Bearing, main (No. 1 upper)	1	2	11	146612	Bearing, main (No. 5 upper)	1	2	15
140080	Bearing, main (No. 1 lower)	1	2	12	140102	Bearing, main (No. 5 lower)	1	2	16
146600	Bearing, main (No. 2,3,4, upper)	3	2	13	150100	Half-ring, crankshaft thrust	4	2	17
140090	Bearing, main (No. 2,3,4, lower)	3	2	14	BM-71633	Bearing set, main (.030)	1		
146610	Bearing, main (No. 5 upper)	1	2	15	146593	Bearing, main (No. 1 upper)	1	2	11
140100	Bearing, main (No. 5 lower)	1	2	16					

PARTS INDENTED ARE INCLUDED IN THE PART UNDER WHICH THEY ARE INDENTED

Part Number	Part Name	No. Req.	Fig. No.	Ref. No.	Part Number	Part Name	No. Req.	Fig. No.	Ref. No.
140083	Bearing, main (No. 1 lower)	1	2	12					
146603	Bearing, main (No. 2,3,4, upper)	3	2	13					
140093	Bearing, main (No. 2,3,4, lower)	3	2	14					
146613	Bearing, main (No. 5 upper)	1	2	15					
140103	Bearing, main (No. 5 lower)	1	2	16					
150100	Half-ring, crankshaft thrust	4	2	17					
BM-71634	Bearing set, main (.040)	1							
146594	Bearing, main (No. 1 upper)	1	2	11					
140084	Bearing, main (No. 1 lower)	1	2	12					
146604	Bearing, main (No. 2,3,4, upper)	3	2	13					
140094	Bearing, main (No. 2,3,4, lower)	3	2	14					
146614	Bearing, main (No. 5 upper)	1	2	15					
140104	Bearing, main (No. 5 lower)	1	2	16					
150100	Half-ring, crankshaft thrust	4	2	17					
128765	Dowel, thrust ring	2	2	18					
128766	Dowel, thrust ring	2	2	19					
	Vibration Damper								
BM-79340	Damper, vibration (158506)	1	2	20					
S-105-A	Capscrew, damper	6	2	21					
68908	Lockplate, damper	6	2	22					

PARTS INDENTED ARE INCLUDED IN THE PART UNDER WHICH THEY ARE INDENTED

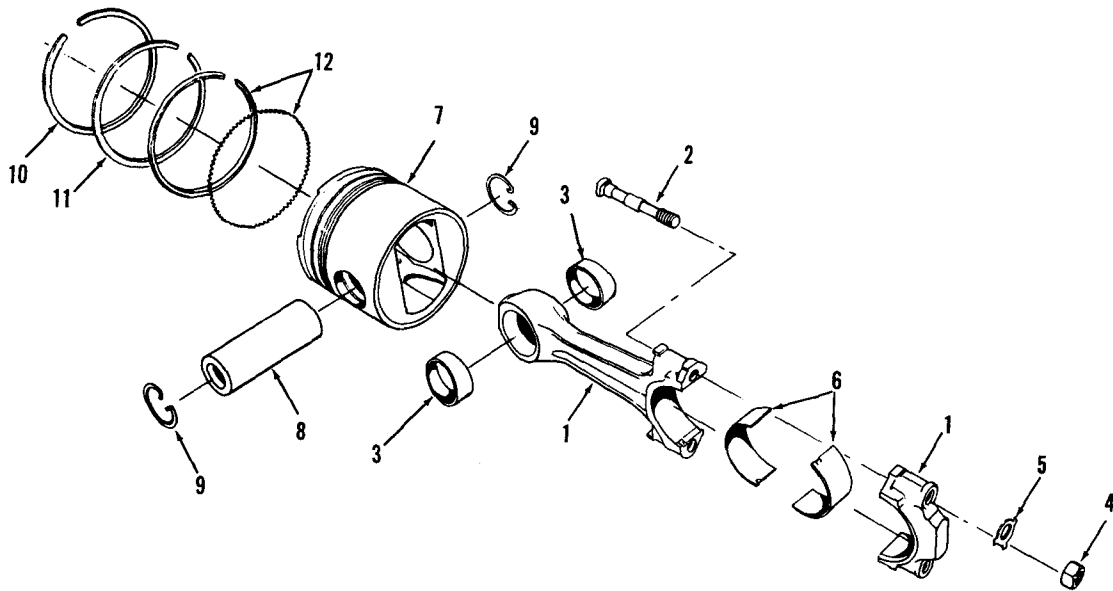


Figure 3

CONNECTING ROD, PISTON AND RINGS

6207114

Part Number	Part Name	No. Req.	Fig. No.	Ref. No.	Part Number	Part Name	No. Req.	Fig. No.	Ref. No.
BM-71249	Rod, connecting (147036)	8	3	1	BM-71664	Piston assembly (.040)	8		
139437	Bolt, connecting rod	16	3	2	146754	Piston	8	3	7
126600	Bushing, piston pin	16	3	3	140120	Pin, piston	8	3	8
139438	Nut, connecting rod bolt	16	3	4	140317	Ring, snap	16	3	9
139950	Lockplate, connecting rod nut	16	3	5	BM-71650	Ring set, piston (std.)	1		
146470	Bearing, connecting rod (std.)	16	3	6	147670	Ring, compression	8	3	10
146471	Bearing, connecting rod (.010)	Use	3	6	154020	Ring, compression	8	3	11
146472	Bearing, connecting rod (.020)	As	3	6	122560	Ring, oil	8	3	12
146473	Bearing, connecting rod (.030)		3	6	BM-71652	Ring set, piston (.020)	1		
146474	Bearing, connecting rod (.040)	Req'd	3	6	147672	Ring, compression	8	3	10
					154022	Ring, compression	8	3	11
					122562	Ring, oil	8	3	12
					BM-71653	Ring set, piston (.030)	1		
					147673	Ring, compression	8	3	10
					154023	Ring, compression	8	3	11
					122563	Ring, oil	8	3	12
					BM-71654	Ring set, piston (.040)	1		
					147674	Ring, compression	8	3	10
BM-71660	Piston assembly (std.)	8			154024	Ring, compression	8	3	11
146750	Piston (smooth skirt, aluminum, taper piston pin boss)	8	3	7	122564	Ring, oil	8	3	12
140120	Pin, piston	8	3	8					
140317	Ring, snap	16	3	9					
BM-71662	Piston assembly (.020)	8							
146752	Piston	8	3	7					
140120	Pin, piston	8	3	8					
140317	Ring, snap	16	3	9					
BM-71663	Piston assembly (.030)	8							
146753	Piston	8	3	7					
140120	Pin, piston	8	3	8					
140317	Ring, snap	16	3	9					

PARTS INDENTED ARE INCLUDED IN THE PART UNDER WHICH THEY ARE INDENTED

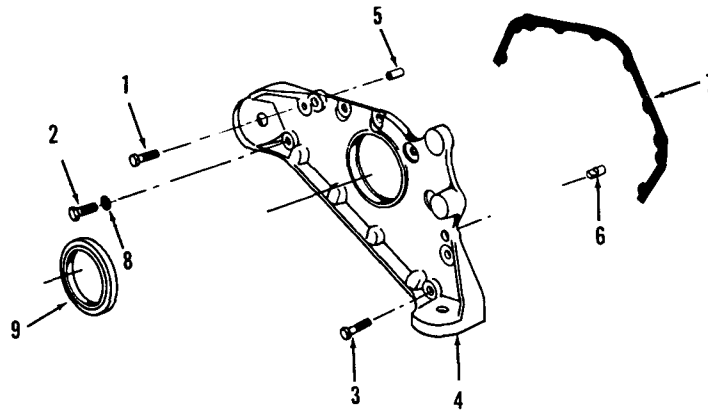


Figure 4

FRONT COVER

6212155

Part Number	Part Name	No. Req.	Fig. No.	Ref. No.	Part Number	Part Name	No. Req.	Fig. No.	Ref. No.
S-109	Capscrew, front cover	4	4	1					
S-103-D	Capscrew, front cover	2	4	2					
108707	Capscrew, front cover	2	4	3					
154371	Cover, front (wedge type)	1	4	4					
70645	Dowel, front cover (Master)	1	4	5					
68568	Dowel, front cover (Diamond)	1	4	6					
141617	Gasket, front cover	1	4	7					
S-604	Lockwasher, front cover	8	4	8					
142598	Seal, oil	1	4	9					

PARTS INDENTED ARE INCLUDED IN THE PART UNDER WHICH THEY ARE INDENTED

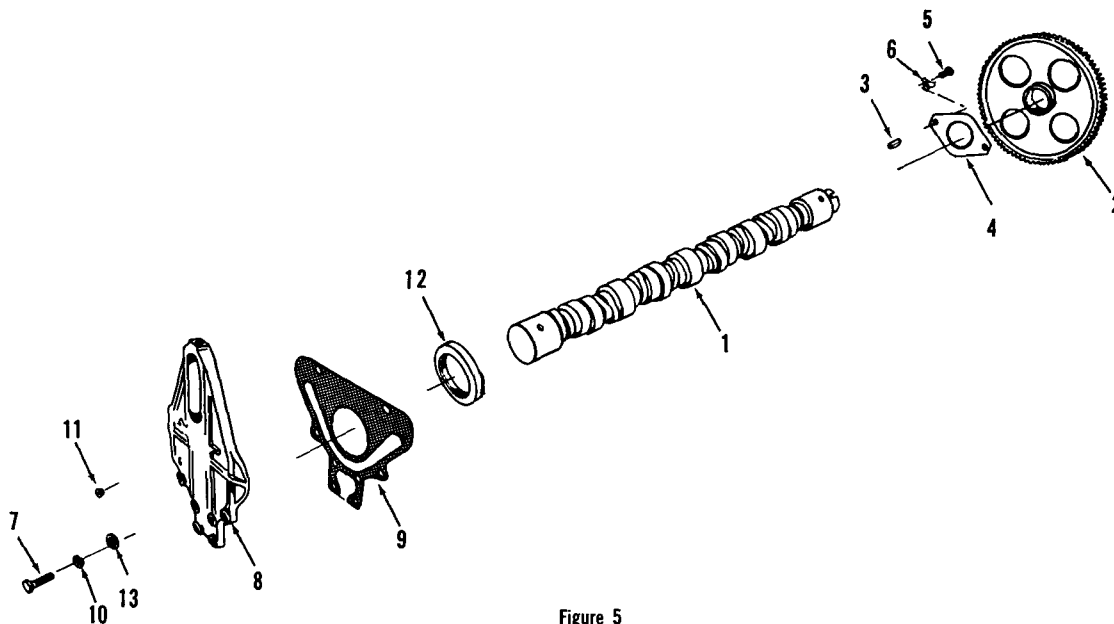


Figure 5
CAMSHAFT

6207167

Part Number	Part Name	No. Req.	Fig. No.	Ref. No.	Part Number	Part Name	No. Req.	Fig. No.	Ref. No.
BM-74576	Camshaft assembly (high mount fan) (155500)	1							
155500	Camshaft (high mount fan)	1	5	1					
150129	Gear, camshaft	1	5	2					
156397	Key, gear	1	5	3					
139875	Bearing, camshaft thrust	1	5	4					
S-109	Capscrew, thrust bearing	2	5	5					
68908	Lockplate, thrust bearing	2	5	6					
S-103-D	Capscrew, camshaft front cover	8	5	7					
151346	Cover, camshaft (high mount fan)	1	5	8					
151866	Gasket, camshaft front cover	1	5	9					
S-604	Lockwasher, camshaft front cover	8	5	10					
S-911-B	Plug, pipe	1	5	11					
140688	Seal, camshaft front cover oil	1	5	12					
S-602	Washer, camshaft front cover	8	5	13					

PARTS INDENTED ARE INCLUDED IN THE PART UNDER WHICH THEY ARE INDENTED

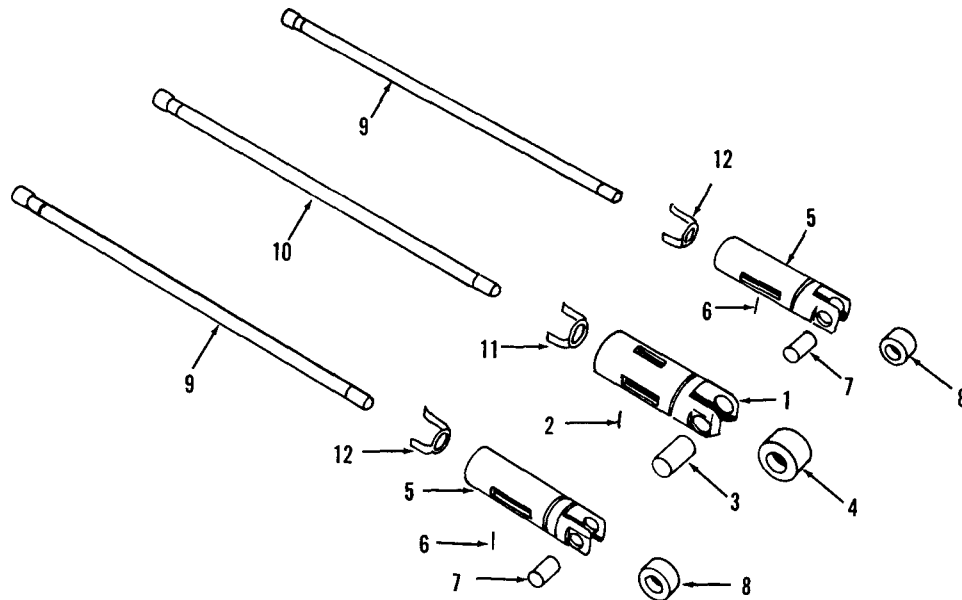


Figure 6
PUSHRODS AND TAPPETS

Part Number	Part Name	No. Req.	Fig. No.	Ref. No.	Part Number	Part Name	No. Req.	Fig. No.	Ref. No.
BM-76110	Tappet, injector (150880)	8	6	1					
111272	Lockwire, tappet	8	6	2					
114223	Pin, injector tappet roller	8	6	3					
154571	Roller, injector tappet	8	6	4					
BM-76111	Tappet, valve (150879)	16	6	5					
108186	Lockwire, tappet	16	6	6					
152080	Pin, valve tappet	16	6	7					
152082	Roller, valve tappet	16	6	8					
153614	Rod, valve push	16	6	9					
153615	Rod, injector push	8	6	10					
150913	Spring, injector tappet	8	6	11					
150914	Spring, valve tappet	16	6	12					

PARTS INDENTED ARE INCLUDED IN THE PART UNDER WHICH THEY ARE INDENTED

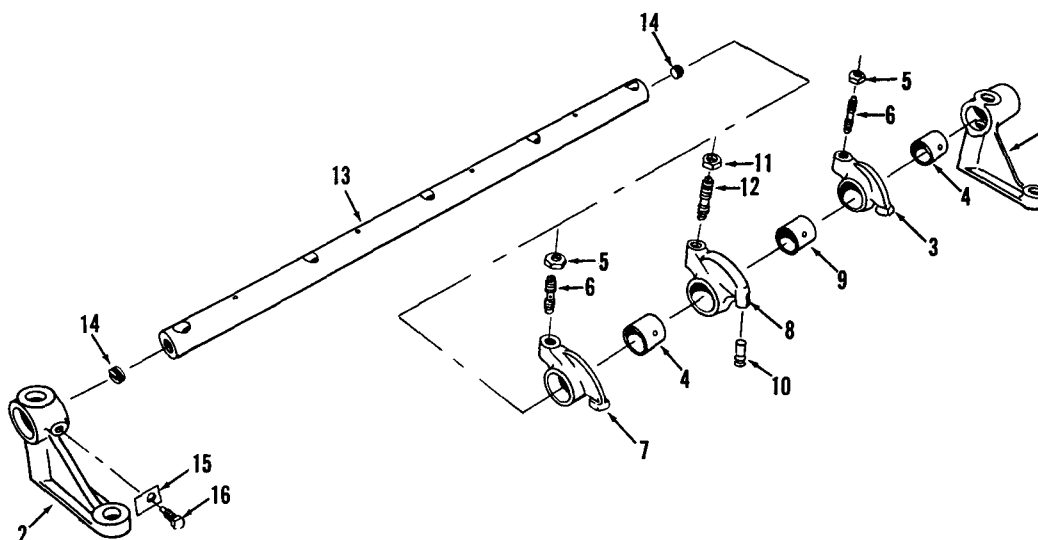


Figure 7
ROCKER LEVERS

6207116

Part Number	Part Name	No. Req.	Fig. No.	Ref. No.	Part Number	Part Name	No. Req.	Fig. No.	Ref. No.
143021	Bracket, rocker lever shaft	8	7	1					
138935	Bracket, rocker lever shaft	2	7	2					
BM-71295	Lever, exhaust valve rocker (141872)	8	7	3					
BM-71294	Lever and bushing (141872)	8							
141875	Bushing, valve rocker	8	7	4					
124333	Nut, adjusting screw	8	7	5					
124326	Screw, adjusting	8	7	6					
BM-71293	Lever, intake valve rocker (141873)	8	7	7					
BM-71292	Lever and bushing (141873)	8							
141875	Bushing, valve rocker lever	8	7	4					
124333	Nut, adjusting screw	8	7	5					
124326	Screw, adjusting	8	7	6					
BM-71291	Lever, injector rocker (146974)	8	7	8					
BM-71290	Lever and bushing (146974)	8							
146975	Bushing, lever	8	7	9					
152173	Socket, injector rocker lever	8	7	10					
101499	Nut, adjusting screw	8	7	11					
142992	Screw, adjusting	8	7	12					
BM-71425	Shaft, rocker lever (146976)	2	7	13					
139412	Plug, rocker shaft	4	7	14					
67282	Lockplate, locating screw	2	7	15					
117183	Screw, rocker shaft locating	2	7	16					

PARTS INDENTED ARE INCLUDED IN THE PART UNDER WHICH THEY ARE INDENTED

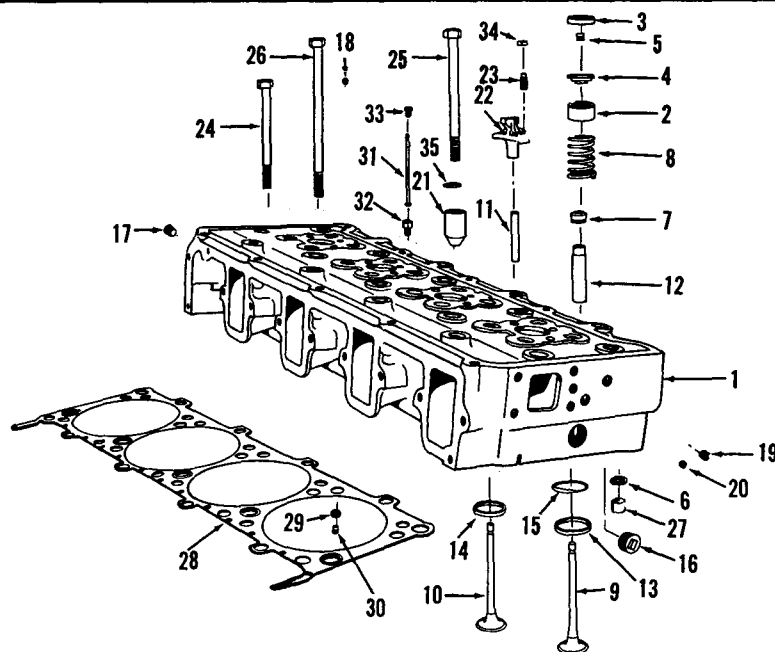


Figure 8
CYLINDER HEAD

6209097

Part Number	Part Name	No. Req.	Fig. No.	Ref. No.	Part Number	Part Name	No. Req.	Fig. No.	Ref. No.
BM-76119	Head assembly, cylinder (149920)	2	8	1	146121	Insert, intake valve seat (.010)	Use		
157572	Cover, intake valve spring	16	8	2	146122	Insert, intake valve seat (.020)	As		
157613	Cover, intake valve spring guide	16	8	3	146123	Insert, intake valve seat (.030)			
139896	Guide, valve spring	32	8	4	146124	Insert, intake valve seat (.040)	Req'd.		
127554	Half-collet, valve	64	8	5					
43696-A	"O" ring	4	8	6	144896	Crosshead, intake valve	8	8	22
135612	Seal, intake valve	16	8	7	144897	Crosshead, exhaust valve	8	8	22
128235	Spring, valve	32	8	8	147389	Capscrew, crosshead	16	8	23
138887	Valve, exhaust	16	8	9	151348	Capscrew, cylinder head	16	8	24
138886	Valve, intake	16	8	10	151349	Capscrew, cylinder head	10	8	25
BM-76118	Head assembly, cylinder (149920)	2			151350	Capscrew, cylinder head	10	8	26
123558	Guide, crosshead	16	8	11	100973	Dowel, ring, cylinder head to block	8	8	27
138937	Guide, valve	32	8	12	BM-76117	Gasket, cylinder head (149973)	2	8	28
127930	Insert, exhaust valve seat	16	8	13	132705	Grommet, retainer	36	8	29
146120	Insert, intake valve seat	16	8	14	131168	Retainer, grommet	36	8	30
146064	Plate, swirl	16	8	15	BM-76116	Tube, vent	2	8	31
S-995	Plug, pipe	6	8	16	S-1027	Connector, tube	8	8	32
S-962	Plug, pipe	12	8	17	S-1023-A	Nut, tube	8	8	33
S-911-B	Plug, pipe	10	8	18	S-273	Nut, crosshead	16	8	34
S-910-B	Plug, pipe	4	8	19	127316	Washer, cylinder head	36	8	35
70459	Plug, fuse	2	8	20					
147056	Sleeve, injector	8	8	21					
127931	Insert, exhaust valve seat (.010)								
127932	Insert, exhaust valve seat (.020)	Use							
127933	Insert, exhaust valve seat (.030)	As							
127934	Insert, exhaust valve seat (.040)	Req'd.							

PARTS INDENTED ARE INCLUDED IN THE PART UNDER WHICH THEY ARE INDENTED

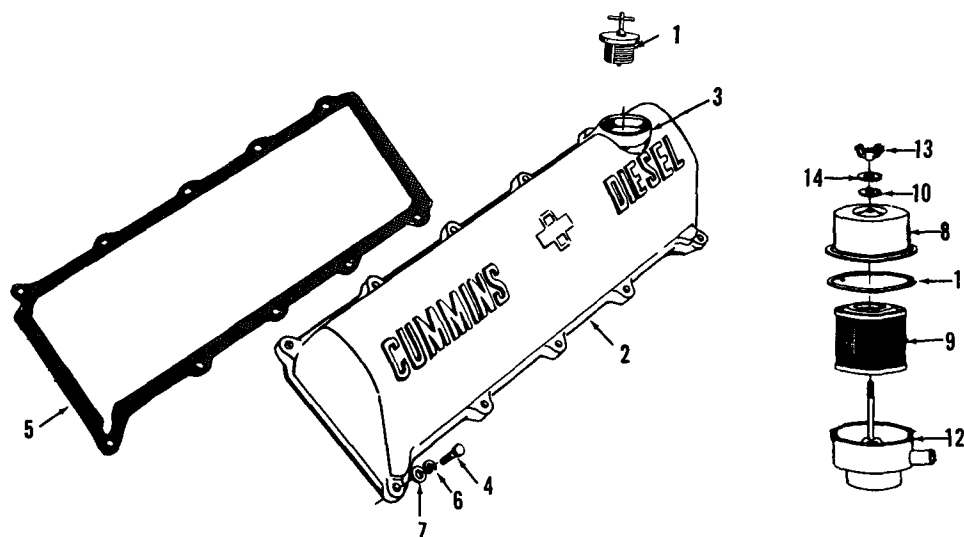


Figure 9
CYLINDER HEAD COVER

6212156

Part Number	Part Name	No. Req.	Fig. No.	Ref. No.	Part Number	Part Name	No. Req.	Fig. No.	Ref. No.
101322	Cap, oil filler	1	9	1					
BM-76106	Cover and tube (L.B.)	1							
149996	Cover, cylinder head	1	9	2					
101264	Tube, oil filler	1	9	3					
149996	Cover, cylinder head	1	9	2					
108707	Capscrew, cover to head	20	9	4					
151299	Gasket, cover to head	2	9	5					
S-604	Lockwasher, cover to head	20	9	6					
S-602	Washer, cover to head	20	9	7					
154272	Breather, crankcase	1							
155997	Cover, breather	1	9	8					
123716	Element	1	9	9					
125015	Gasket, washer	1	9	10					
125019	Gasket, cover	1	9	11					
155998	Housing, filter	1	9	12					
125017	Nut, wing, cover	1	9	13					
125016	Washer, plain, cover	1	9	14					

PARTS INDENTED ARE INCLUDED IN THE PART UNDER WHICH THEY ARE INDENTED

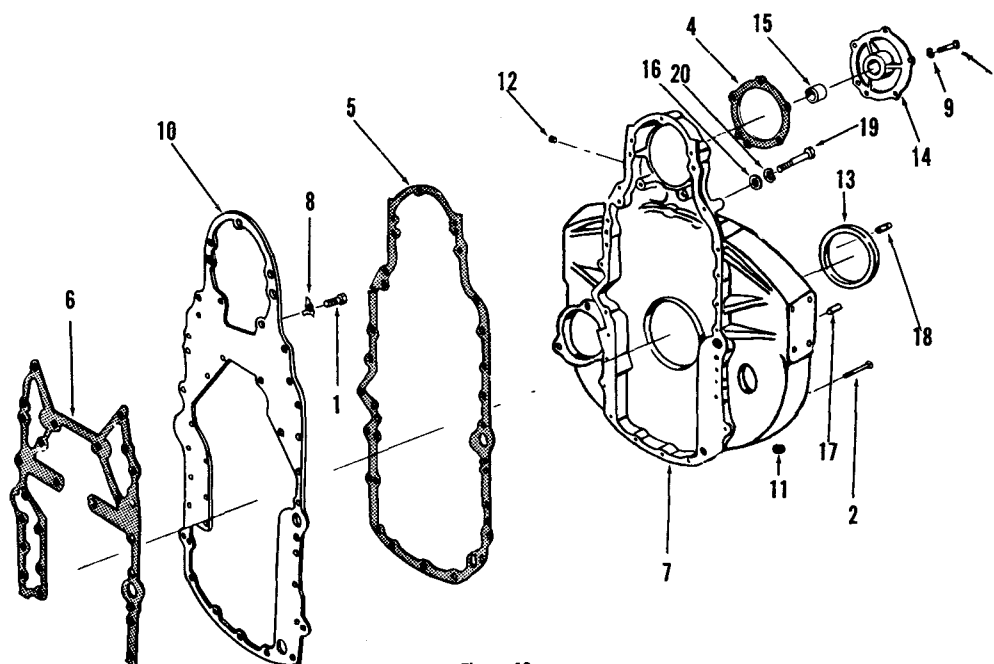
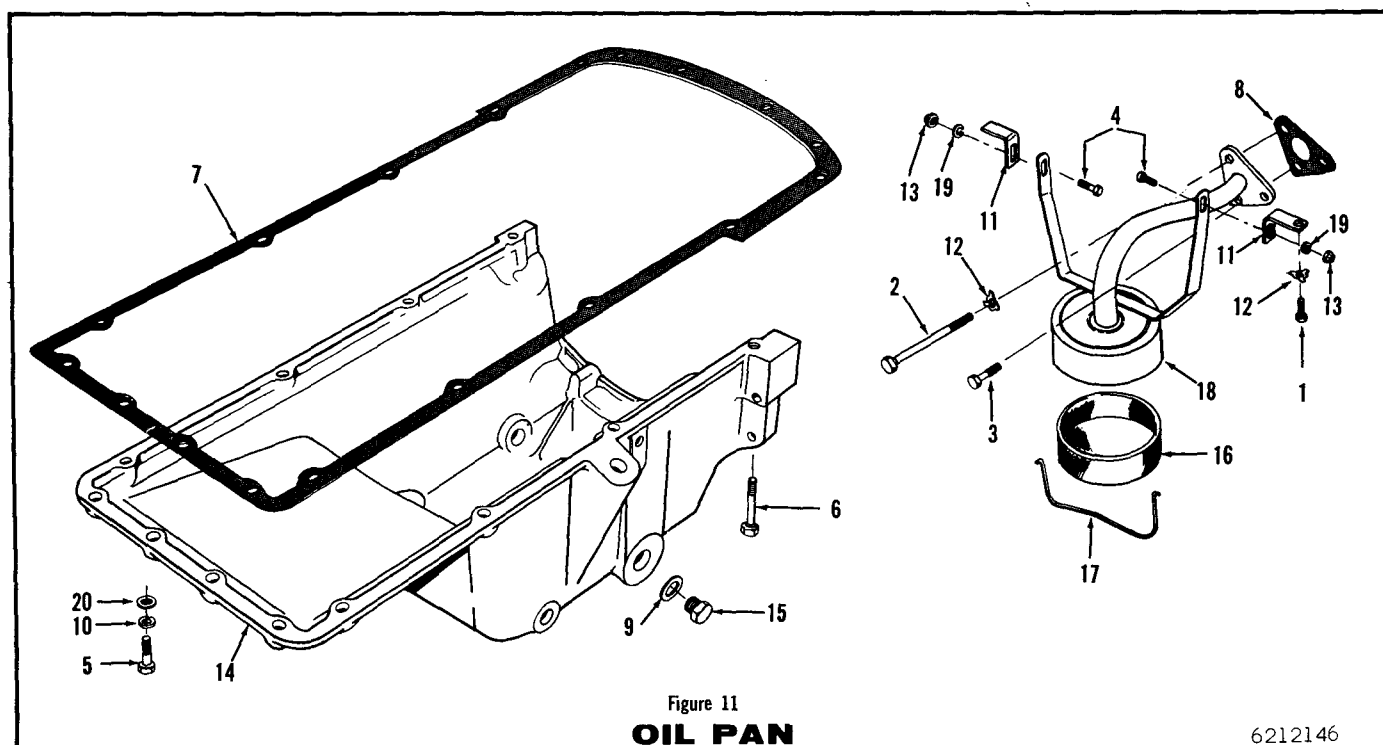


Figure 10
GEAR HOUSING

6207166

Part Number	Part Name	No. Req.	Fig. No.	Ref. No.	Part Number	Part Name	No. Req.	Fig. No.	Ref. No.
S-126	Capscrew, cover to block	11	10	19					
S-102-D	Capscrew, cover to block	1							
S-109	Capscrew, plate to block	10	10	1					
S-120	Capscrew, cover to oil pan	5	10	2					
S-163	Capscrew, air compressor support	5	10	3					
70662	Dowel, gear housing to block (Master)	1	10	17					
150119	Dowel, gear housing to block (Diamond)	1	10	18					
139846	Gasket, compressor rear support	1	10	4					
151100	Gasket, gear housing to plate	1	10	5					
151780	Gasket, plate to block	1	10	6					
157237	Housing, gear and fly-wheel	1	10	7					
68908	Lockplate, plate to block	10	10	8					
S-604	Lockwasher, compressor rear support	5	10	9					
S-604	Lockwasher, gear housing	23	10	20					
151035	Plate, gear housing	1	10	10					
S-910-B	Plug, pipe	2	10	11					
S-911-B	Plug, pipe	1	10	12					
S-995	Plug, pipe	1							
142599	Seal, oil	1	10	13					
BM-71356	Support, air compressor (rear) (139915)	1	10	14					
144800	Bushing, support	2	10	15					
S-602	Washer, plain	23	10	16					

PARTS INDENTED ARE INCLUDED IN THE PART UNDER WHICH THEY ARE INDENTED



Part Number	Part Name	No. Req.	Fig. No.	Ref. No.	Part Number	Part Name	No. Req.	Fig. No.	Ref. No.
S-117	Capscrew, hanger	2	11	1		Dipstick and Tube			
S-114	Capscrew	2			147538	Dipstick (gear cover type)	1		
S-103-D	Capscrew, suction flange	1	11	2		Tube, dipstick	1		
S-102-D	Capscrew, suction flange	2	11	3	147418				
S-107	Capscrew, drain tube flange	2	11	4	147135	Bracket, tube support	1		
S-174-B	Capscrew, pan to block	12	11	5	S-117	Capscrew, clamp	1		
S-102-D	Capscrew, pan to block	2	11	6	65798	Clamp, tube	1		
151101	Gasket, oil pan	1	11	7	S-604	Lockwasher, clamp	1		
144667	Gasket, tube flange to pump	1	11	8	S-223	Nut, capscrew	1		
67946	Gasket, drain plug	2	11	9					
S-604	Lockwasher, pan to block	14	11	10					
105073	Hanger, suction tube and flange	2	11	11					
68908	Lockplate, hanger	2	11	12					
68908	Lockplate, tube flange to pump	3	11	12					
117559	Lockplate	2							
109558	Nut, suction tube	2	11	13					
151603	Pan, oil (rear sump) (standard)	1	11	14					
110907	Plug, oil pan drain	2	11	15					
S-908	Plug, Pipe oil dipstick hole	1							
S-915-A	Plug, pipe	2							
S-911-B	Plug, pipe	1							
43226-2	Screen, suction	1	11	16					
69171-2	Support, suction screen	1	11	17					
BM-71317	Tube and flange, suction	1	11	18					
BM-76065	Tube, lubricating oil by-pass	1							
101503	Washer, suction screen hanger	2	11	19					
S-602	Washer, plain, pan to block	14	11	20					

PARTS INDENTED ARE INCLUDED IN THE PART UNDER WHICH THEY ARE INDENTED

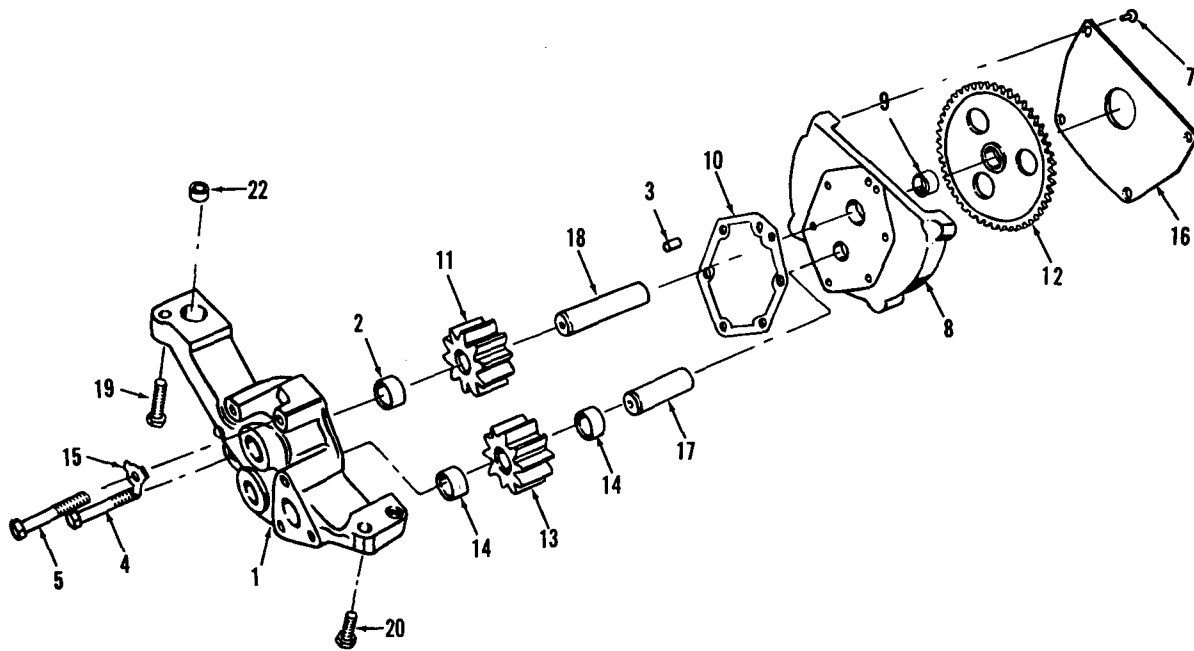


Figure 12
LUBRICATING OIL PUMP

6207162

Part Number	Part Name	No. Req.	Fig. No.	Ref. No.	Part Number	Part Name	No. Req.	Fig. No.	Ref. No.
BM-76055	Pump, lubricating oil	1							
BM-76861	Body and bushing (149635)	1	12	1					
68365	Bushing, body	2	12	2					
70760	Dowel, body	1	12	3					
S-104	Capscrew, cover to body	3	12	4					
S-137	Capscrew, cover to body	1	12	5					
108707	Capscrew, cover to body	2	12	6					
114463	Capscrew, plate	4	12	7					
BM-74650	Cover, pump (151032)	1	12	8					
68365	Bushing, cover	1	12	9					
143694	Gasket, cover to body	1	12	10					
143403	Gear, drive	1	12	11					
149151	Gear, drive, main	1	12	12					
BM-71393	Gear, idler (143402)	1	12	13					
68365	Bushing, gear	2	12	14					
68908	Lockplate, cover to body	6	12	15					
151033	Plate, cover	1	12	16					
143406	Shaft, idler	1	12	17					
143405	Shaft, drive	1	12	18					
108707	Capscrew, pump to block	1	12	19					
S-120	Capscrew, pump to block	1	12	20					
S-103-D	Capscrew, pump to block	1	12	21					
69236	Dowel, ring, pump	2	12	22					
68908	Lockplate, pump to block	2							

PARTS INDENTED ARE INCLUDED IN THE PART UNDER WHICH THEY ARE INDENTED

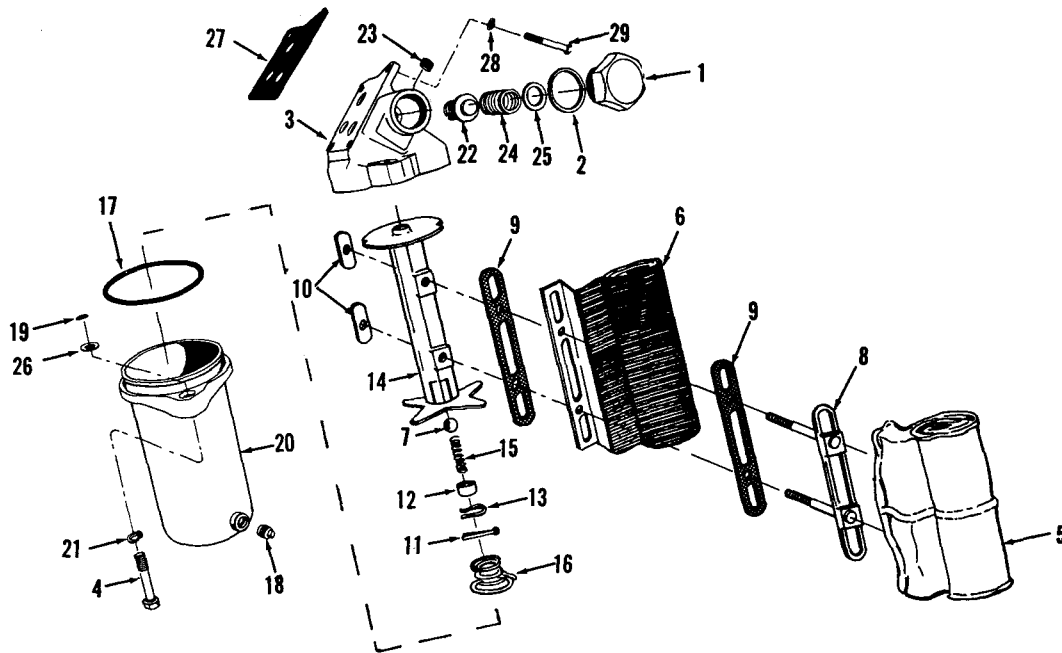


Figure 13
LUBRICATING OIL FILTER

6209098

Part Number	Part Name	No. Req.	Fig. No.	Ref. No.	Part Number	Part Name	No. Req.	Fig. No.	Ref. No.
BM-71449	Filter assembly, lubricating	1			S-141	Capscrew, filter to cooler cover	4	13	29
151169	Cap, regulator	1	13	1	145075	Gasket, filter to cooler cover	1	13	27
140698	Gasket, regulator cap	1	13	2					
144991	Head, filter	1	13	3	S-604	Lockwasher, filter to cooler cover	1	13	28
BM-54270	Filter, lubricating oil	1							
135168	Capscrew, filter head	2	13	4					
BM-60646	Element, filter	1							
S-1953	Bag, filter	1	13	5					
134729	Separator	1	13	6					
BM-60645	Spool, bag	1							
128805	Ball, by-pass relief	1	13	7					
128800	Clamp, filter	1	13	8					
128801	Gasket, filter clamp	2	13	9					
128802	Nut, elongated clamp	2	13	10					
S-503	Pin, cotter	1	13	11					
128803	Retainer, spring	1	13	12					
128807	Ring, retaining	1	13	13					
128799	Spool, bag	1	13	14					
128804	Spring, by-pass adjusting	1	13	15					
128806	Spring, filter	1	13	16					
116024	"O" ring, shell to head	1	13	17					
69901	Plug, drain	1	13	18					
135169	Ring, retaining	2	13	19					
BM-65789	Shell assembly	1	13	20					
S-608	Lockwasher, head to filter	2	13	21					
155072	Plunger, relief valve	1	13	22					
S-908	Plug, pipe, head	1	13	23					
139957	Spring, plunger	1	13	24					
158208	Washer, head to filter	2	13	26					
62815	Shim	As Req	13	25					

PARTS INDENTED ARE INCLUDED IN THE PART UNDER WHICH THEY ARE INDENTED

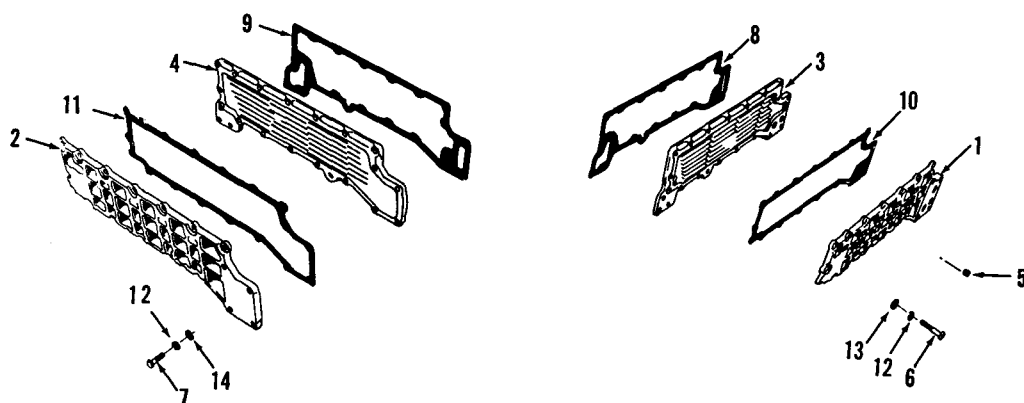


Figure 14
LUBRICATING OIL COOLER

6209099

Part Number	Part Name	No. Req.	Fig. No.	Ref. No.	Part Number	Part Name	No. Req.	Fig. No.	Ref. No.
157417	Cover, cooler (L.B.)	1	14	1					
157416	Cover, cooler (R.B.)	1	14	2					
157462	Element, cooler (L.B.)	1	14	3					
157460	Element, cooler (R.B.)	1	14	4					
S-910-B	Plug, pipe	2	14	5					
S-103-D	Capscrew, cover to block	4	14	6					
S-120	Capscrew, cover to block	40	14	7					
157428	Gasket, element to block (L.B.)	1	14	8					
157426	Gasket, element to block (R.B.)	1	14	9					
157438	Gasket, cover to element (L.B.)	1	14	10					
157436	Gasket, cover to element (R.B.)	1	14	11					
S-604	Lockwasher, cover to block	44	14	12					
63842	Washer, cover to block	42	14	13					
S-602	Washer, cover to block	2	14	14					

PARTS INDENTED ARE INCLUDED IN THE PART UNDER WHICH THEY ARE INDENTED

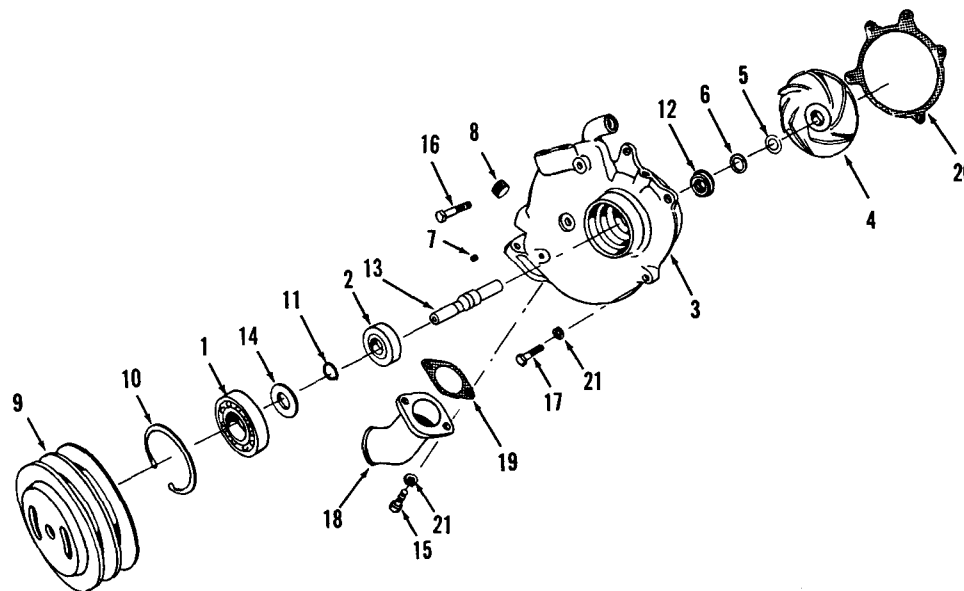


Figure 15

WATER PUMP AND PULLEY

6212149

Part Number	Part Name	No. Req.	Fig. No.	Ref. No.	Part Number	Part Name	No. Req.	Fig. No.	Ref. No.
BM-76161	Pump, water	1							
155227	Pulley, pump (2 groove)	1	15	9					
BM-78658	Pump, water (less pulley)	1							
69866	Bearing, ball	1	15	1					
154577	Bearing, ball	1	15	2					
157398	Body, water pump	1	15	3					
S-1109	Fitting, grease	1							
BM-76114	Impeller (159182)	1	15	4					
143913	Film, bonding	1	15	5					
135079	Seat, ceramic	1	15	6					
S-911-B	Plug, pipe	1	15	7					
S-995	Plug, pipe	1	15	8					
70183	Retainer, bearing	1	15	10					
S-16237	Ring, snap	1	15	11					
144306	Seal, water pump	1	15	12					
159330	Shaft, water pump	1	15	13					
154639	Spacer, water pump	1	15	14					
S-112	Capscrew, inlet connection	2	15	15					
S-112	Capscrew, water pump	2	15	16					
108707	Capscrew, water pump	1	15	17					
S-103-D	Capscrew, water pump	1							
S-137	Capscrew, water pump	1							
154590	Connection, inlet	1	15	18					
9221	Gasket, connection	1	15	19					
154358	Gasket, water pump	1	15	20					
S-604	Lockwasher	5	15	21					

PARTS INDENTED ARE INCLUDED IN THE PART UNDER WHICH THEY ARE INDENTED

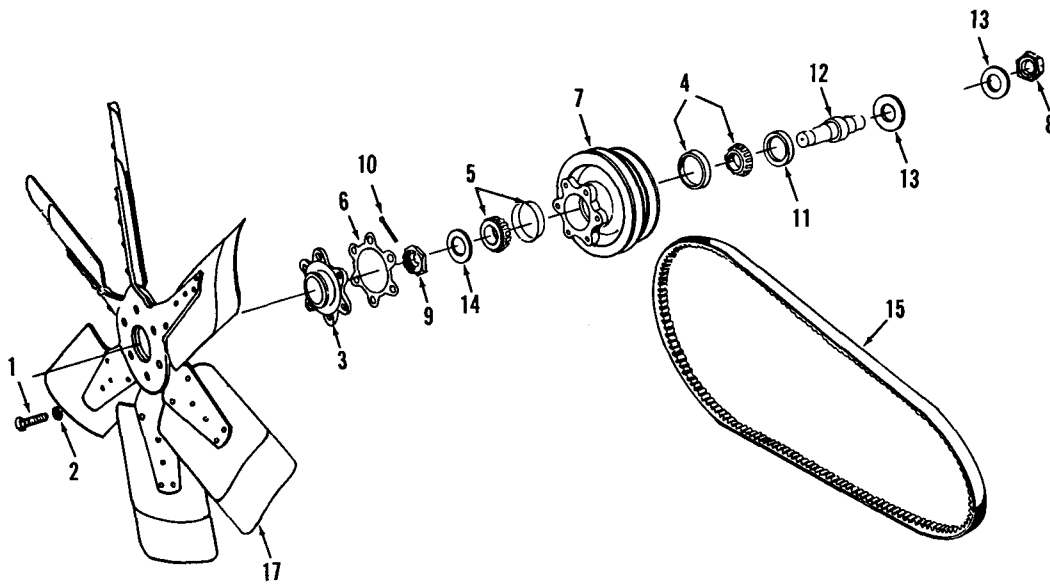


Figure 16
FAN HUB

6212150

Part Number	Part Name	No. Req.	Fig. No.	Ref. No.	Part Number	Part Name	No. Req.	Fig. No.	Ref. No.
BM-75818	Hub, fan	1							
S-103-D	Capscrew, fan to hub	6	16	1					
S-604	Lockwasher, fan	6	16	2					
143085	Spacer, pilot	1	16	3					
BM-73891	Hub, pulley	1							
143116	Bearing	1	16	4					
116759	Bearing	1	16	5					
143108	Gasket	1	16	6					
149366	Hub, pulley	1	16	7					
67532	Nut, shaft	1	16	8					
146650	Nut, shaft	1	16	9					
S-510	Pin, cotter	1	16	10					
S-911-B	Plug, pipe	2							
106276	Seal, oil	1	16	11					
149369	Shaft	1	16	12					
67526	Washer, clamp	2	16	13					
146651	Washer, clamp	1	16	14					
64290-A	Screw, fan adjusting	1							
154377	Belt, fan (3/4" for 20" fan center)	2	16	15					
151346	Bracket, fan	1	5	8					
21036	Fan (high mount) 24" R.H.	1	16	17					

PARTS INDENTED ARE INCLUDED IN THE PART UNDER WHICH THEY ARE INDENTED

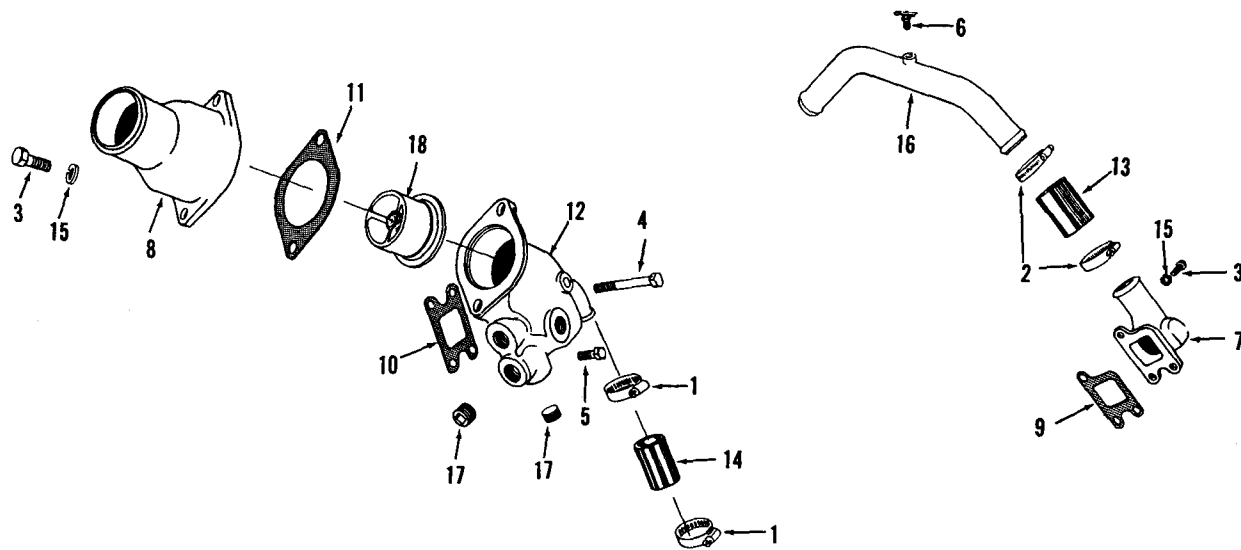


Figure 17
THERMOSTAT HOUSING

Part Number	Part Name	No. Req.	Fig. No.	Ref. No.	Part Number	Part Name	No. Req.	Fig. No.	Ref. No.
43828-B	Clamp, hose, water cross-over pipe	4	17	1	61554	Hose, thermostat housing outlet	1	17	14
43828-A	Clamp, hose, thermostat housing outlet	2	17	2	S-604	Lockwasher, housing and connection	16	17	15
S-120	Capscrew, water outlet cover	4			140687	Pipe, water crossover	1	17	16
S-112	Capscrew, outlet connection	2	17	3	S-915-A	Plug, pipe	5	17	17
S-112	Capscrew, water outlet connection	3	17	3	62906-B	Spacer	1		
108707	Capscrew, lifting hook	3			140669	Thermostat (173° - 185°F)	1	17	18
S-102-D	Capscrew, thermostat housing	2	17	4	S-602	Washer, plain, water outlet connection	4		
S-117	Capscrew, thermostat housing	2	17	5					
S-962-E	Cock, drain	1	17	6					
140347	Connection, water outlet	2	17	7					
BM-77717	Connection, water crossover (R.B.)	1							
BM-77718	Connection, water crossover (L.B.)	1							
140348	Cover, water outlet	1							
147729	Cover, thermostat housing	1	17	8					
139675	Gasket, water crossover connection	3	17	9					
140514	Gasket, thermostat housing to cylinder head	1	17	10					
140514	Gasket, water outlet cover	2							
140329	Gasket, thermostat housing cover	1	17	11					
157647	Housing, thermostat	1	17	12					
154643	Hook, lifting	2							
63495	Hose, water connection	2	17	13					

PARTS INDENTED ARE INCLUDED IN THE PART UNDER WHICH THEY ARE INDENTED

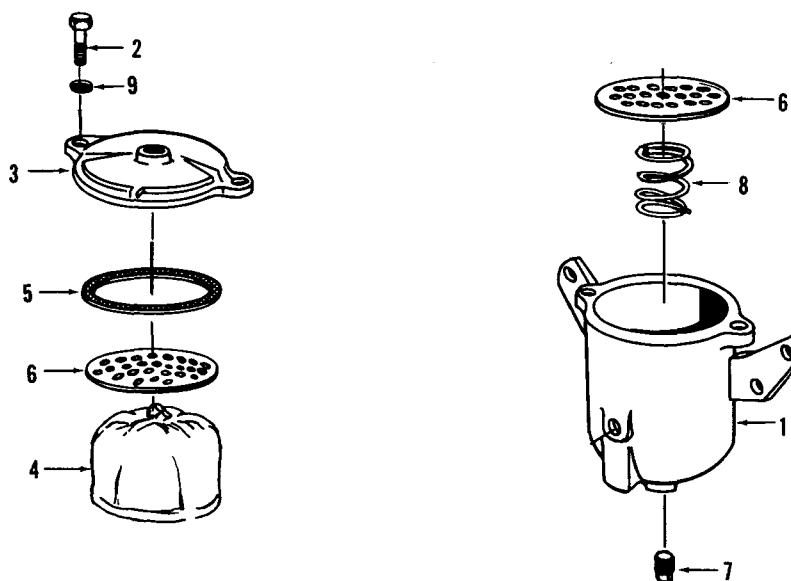


Figure 18
CORROSION RESISTOR

6212152

Part Number	Part Name	No. Req.	Fig. No.	Ref. No.	Part Number	Part Name	No. Req.	Fig. No.	Ref. No.
132716	Filter assembly (water)	1	18						
132717	Body, water filter	1	18	1					
70223	Capscrew, cover to body	2	18	2					
132718	Cover, water filter	1	18	3					
132732	Element, filter	1	18	4					
132730	Gasket, cover	1	18	5					
132719	Plate, water filter	2	18	6					
68675	Plug, drain	1	18	7					
132731	Spring, filter	1	18	8					
70223	Washer, cover to body	2	18	9					
159664	Bracket, mounting	1							
S-921-D	Bushing	2							
S-119	Capscrew	3							
S-111	Capscrew	2							
43828	Clamp, hose	4							
69465	Clamp, hose	2							
134325	Connector, elbow	2							
S-924	Elbow	1							
S-605	Lockwasher	5							
S-221	Nut	2							
157098	Valve, water	2							

PARTS INDENTED ARE INCLUDED IN THE PART UNDER WHICH THEY ARE INDENTED

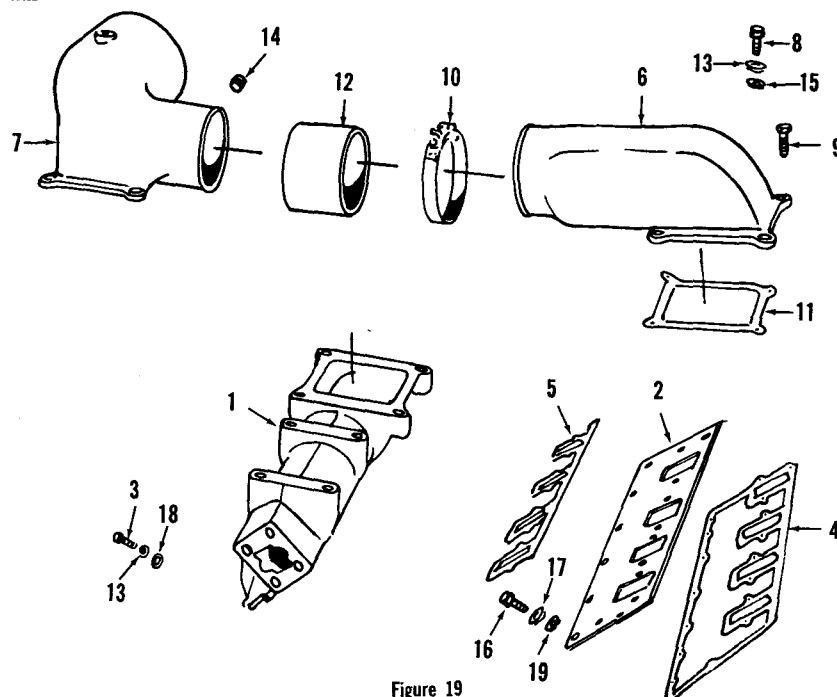


Figure 19

AIR INTAKE MANIFOLD

6212158

Part Number	Part Name	No. Req.	Fig. No.	Ref. No.	Part Number	Part Name	No. Req.	Fig. No.	Ref. No.
156497	Manifold, intake (L.B. and R.B.)	2	19	1					
154226	Plate, push tube cover	2	19	2					
S-103-D	Capscrew, manifold to cover	16	19	3					
137795	Capscrew	26	19	16					
151707	Gasket, plate	2	19	4					
154396	Gasket, intake manifold	2	19	5					
S-604	Lockwasher	16	19	13					
S-605	Lockwasher	26	19	17					
S-602	Washer, plain	16	19	18					
S-626	Washer, plain	26	19	19					
156350	Connection, air crossover	1	19	6					
156349	Connection, air intake	1	19	7					
S-174-B	Capscrew, connection	7	19	8					
S-105	Capscrew, connection	1	19	9					
125740	Clamp, hose	2	19	10					
156348	Gasket, air connection	2	19	11					
64015	Hose, connection	1	19	12					
S-604	Lockwasher, connection	8	19	13					
S-911-B	Plug, pipe	2	19	14					
S-602	Washer, plain, connection	8	19	15					

PARTS INDENTED ARE INCLUDED IN THE PART UNDER WHICH THEY ARE INDENTED

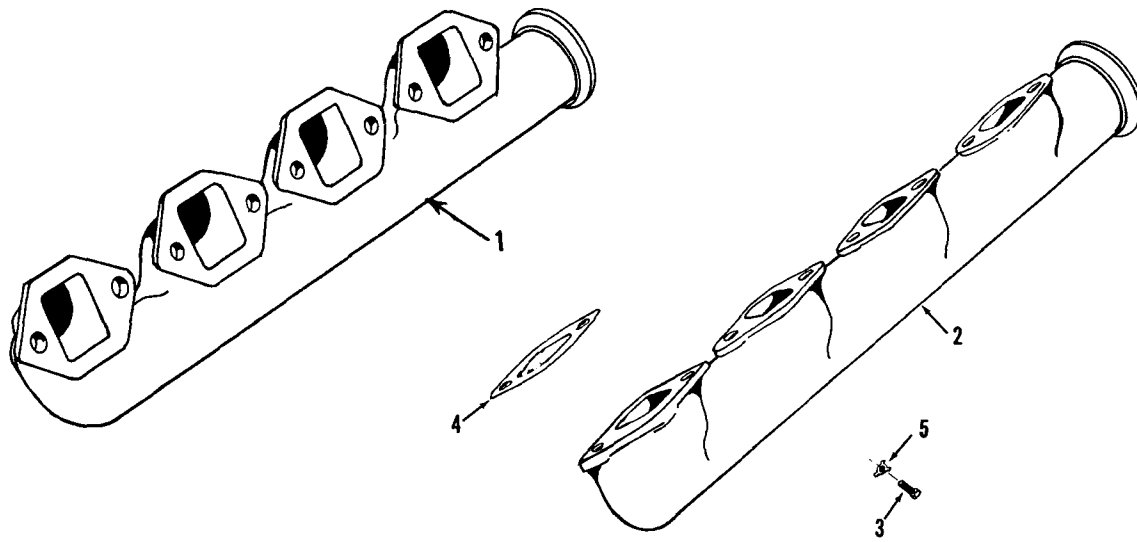


Figure 20
EXHAUST MANIFOLD

Part Number	Part Name	No. Req.	Fig. No.	Ref. No.	Part Number	Part Name	No. Req.	Fig. No.	Ref. No.
157743	Manifold, exhaust (L.B.)	1	20	1					
157744	Manifold, exhaust (R.B.)	1	20	2					
S-112	Capscrew, manifold to head (high mount)	16	20	3					
139677	Gasket, exhaust manifold	8	20	4					
139247	Lockplate, manifold to head	8	20	5					

PARTS INDENTED ARE INCLUDED IN THE PART UNDER WHICH THEY ARE INDENTED

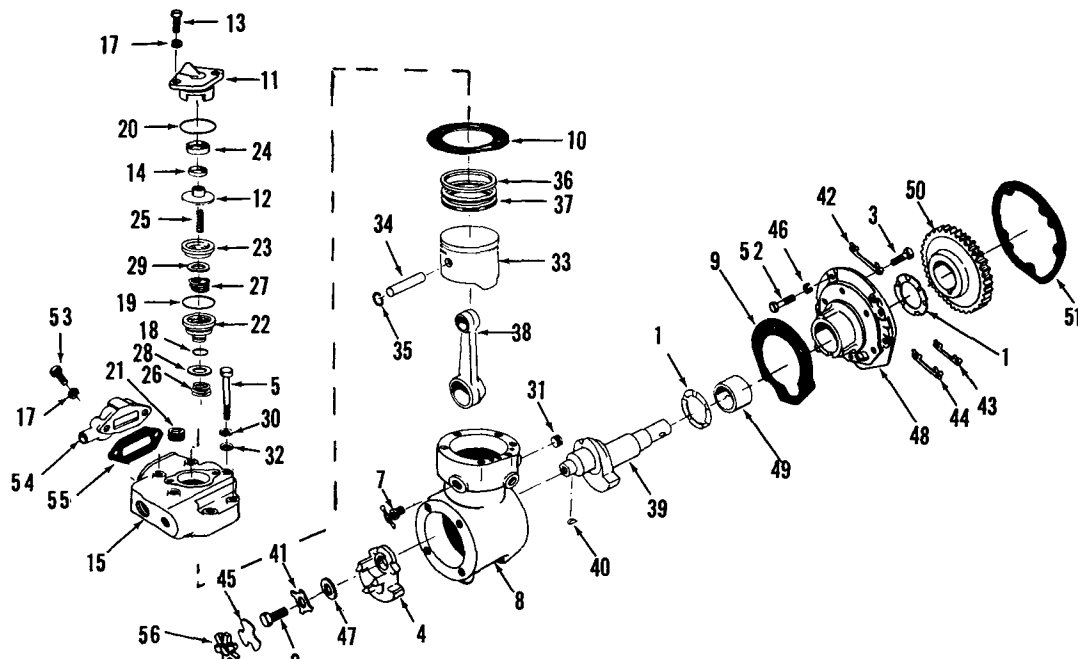


Figure 21

AIR COMPRESSOR

6212154

Part Number	Part Name	No. Req.	Fig. No.	Ref. No.	Part Number	Part Name	No. Req.	Fig. No.	Ref. No.
BM-75284	<u>CUMMINS 12 Cu. Ft.</u> Compressor assembly, air	1			144714	Seat, exhaust valve	1	21	22
130080	Bearing, thrust .088/.090	AR	21	1	145028	Seat, intake valve	1	21	23
130081	Bearing, thrust .090/.092	AR	21	1	127936	Seal, plunger	1	21	24
130082	Bearing, thrust .100/.102	AR	21	1	150631	Spring, plunger	1	21	25
130083	Bearing, thrust .092/.094	AR	21	1	128080	Spring, exhaust valve	1	21	26
S-193	Capscrew, counterweight	1	21	2	144308	Spring, intake valve	1	21	27
S-103-D	Capscrew, support to crankcase	6	21	3	127940	Valve, exhaust	1	21	28
125349	Counterweight	1	21	4	144948	Valve, intake	1	21	29
BM-66014	Crankcase and head assembly	1			S-604	Lockwasher, head to crankcase	6	21	30
S-104	Capscrew, head to crankcase	2	21	5	S-908	Plug, pipe	2	21	31
S-102-D	Capscrew, head to crankcase	4	21	6	S-602	Lockwasher	6	21	32
107947	Cock, drain	1	21	7	BM-62550	Piston	1		
144529	Crankcase	1	21	8	142470	Piston	1	21	33
117077	Gasket, support to crankcase	1	21	9	119810	Pin, piston	1	21	34
129059	Gasket, head to crankcase	1	21	10	119859	Ring, piston pin snap	2	21	35
BM-72324	Head, compressor	1			BM-62480	Ring, piston	1		
145086	Body, unloader valve	1	21	11	130800	Ring, compression	2	21	36
145087	Cap, unloader valve	1	21	12	130810	Ring, oil	1	21	37
S-102	Capscrew, unloader body to head	2	21	13	143889	Rod, compressor	1	21	38
139400	Guide, unloader cap	1	21	14	139850	Crankshaft	1	21	39
127807	Head, compressor	1	21	15	131969	Key, counterweight	1	21	40
S-605	Lockwire	2	21	17	117370	Lockplate, counterweight	1	21	41
128085	"O" ring, intake valve seat	1	21	18	140259	Lockplate, front support to crankcase (long)	1	21	42
128086	"O" ring, exhaust valve seat	1	21	19	140276	Lockplate, front support to crankcase (short)	1	21	43
128087	"O" ring, unloader valve seat	1	21	20	140277	Lockplate, front support to crankcase (medium)	1	21	44
S-995	Plug, pipe	1	21	21	130258	Plate, coupling retaining	1	21	45
					S-604	Lockwasher	6	21	46
					136403	Plate, name	1		
					S-2267	Screw, drive	2		
					117267	Washer, counterweight	1	21	47
					BM-71357	Support, compressor (140078)	1	21	48

PARTS INDENTED ARE INCLUDED IN THE PART UNDER WHICH THEY ARE INDENTED

Part Number	Part Name	No. Req.	Fig. No.	Ref. No.	Part Number	Part Name	No. Req.	Fig. No.	Ref. No.
144680	Bushing, support	1	21	49					
109859	Coupling	1	21	56					
150139	Gear drive	1	21	50					
139846	Gasket	1	21	51					
S-1002-A	Body, flexible fitting	2							
S-921-D	Bushing	1							
S-983	Bushing	1							
S-106-A	Capscrew	1	21	52					
S-102	Capscrew	1	21	53					
43828-A	Clamp, hose	2							
155313	Connection	1	21	54					
69562	Dowel, gear case	1							
102957	Dowel, diamond	1							
S-1005-A	Elbow	2							
127950	Gasket	1	21	55					
155789	Hose	1							
S-605	Lockwasher	2							
146972	Tube, water drain	1							
153312	Tube, water inlet	1							

PARTS INDENTED ARE INCLUDED IN THE PART UNDER WHICH THEY ARE INDENTED

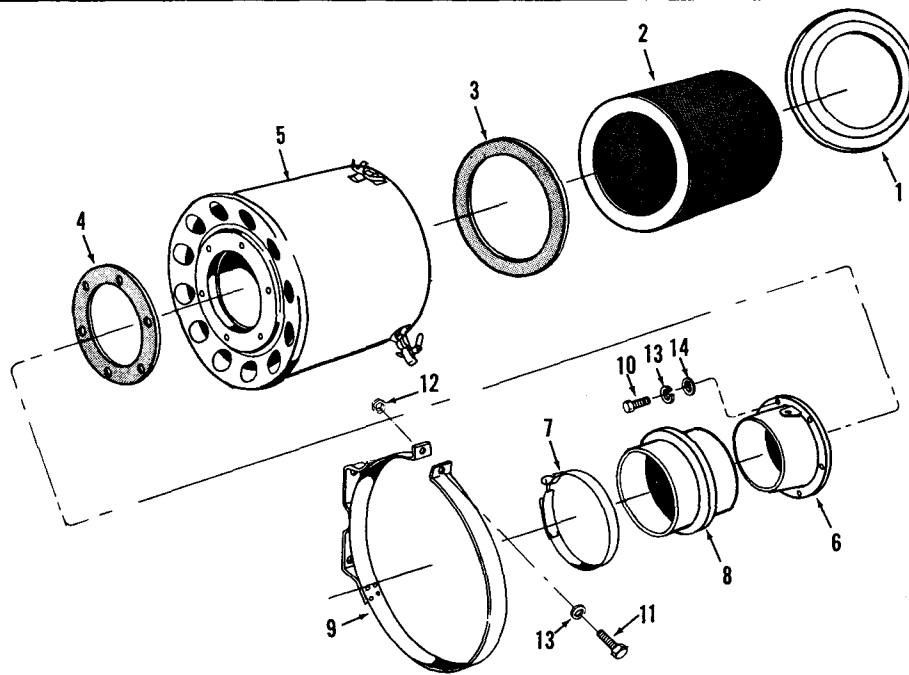


Figure 22
AIR CLEANER

Part Number	Part Name	No. Req.	Fig. No.	Ref. No.	Part Number	Part Name	No. Req.	Fig. No.	Ref. No.
106833	Cleaner, air (12" diameter)	1							
107135	Cover, shell	1	22	1					
106837	Element assembly	1	22	2					
107136	Gasket, element	1	22	3					
107137	Gasket, flange	1	22	4					
107134	Shell, cleaner	1	22	5					
106126	Adapter, air cleaner	1	22	6					
125741	Clamp, hose	4	22	7					
103808	Hose, flexible	2	22	8					
105916	Strap, cleaner	2	22	9					
S-115	Capscrew	6	22	10					
S-111	Capscrew	2	22	11					
S-221	Nut	2	22	12					
S-605	Washer	8	22	13					
S-626	Washer	6	22	14					

PARTS INDENTED ARE INCLUDED IN THE PART UNDER WHICH THEY ARE INDENTED

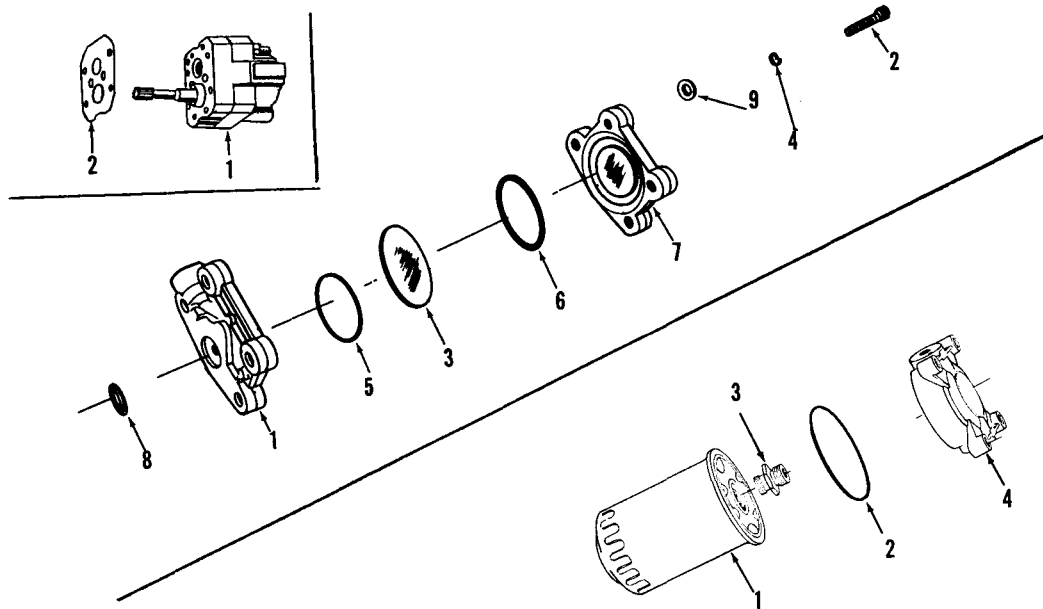


Figure 23

FUEL PUMP DAMPER, GEAR PUMP AND FILTER

6207078

Part Number	Part Name	No. Req.	Fig. No.	Ref. No.	Part Number	Part Name	No. Req.	Fig. No.	Ref. No.
PT FUEL SYSTEM					BM-55831	Fuel Supply Gear Pump	1	23	1
Each Cummins PT Fuel Pump is calibrated to obtain the best performance and fuel economy for your engine. Your Cummins Distributor or Dealer has the special tools required for complete rebuild and calibration. Caution: do not disturb the fuel pressure settings or the throttle screw settings, as serious damage to your engine may result.					139290	Pump, gear 3/4" (L.H.)	1	23	2
Only PT Fuel System parts which can be replaced without pump calibration are listed here. Your Cummins Distributor will record the specific part number of your complete PT Fuel Pump in the front of this book.					Fuel Filter				
					BM-78791	Filter, fuel	1		
					BM-78669	Cartridge, filter	1	23	1
					127506	Seal, cartridge	1	23	
					BM-59481	Head, filter	1		
					126516	Bolt, head	1	23	3
					142784	Head, filter	1	23	4
					139689	Seal, cartridge	1	23	2
BM-76340	Fuel Pump Damper								
	Damper, fuel	1							
153336	Body, damper	1	23	1					
S-172-C	Capscrew	2	23	2					
139834	Diaphragm	1	23	3					
S-698	Lockwasher	2	23	4					
139988	"O" ring	1	23	5					
100099	"O" ring	1	23	6					
153338	Plate, damper	1	23	7					
151900	Seal, damper to gear pump	1	23	8					
70704	Washer	2	23	9					

PARTS INDENTED ARE INCLUDED IN THE PART UNDER WHICH THEY ARE INDENTED

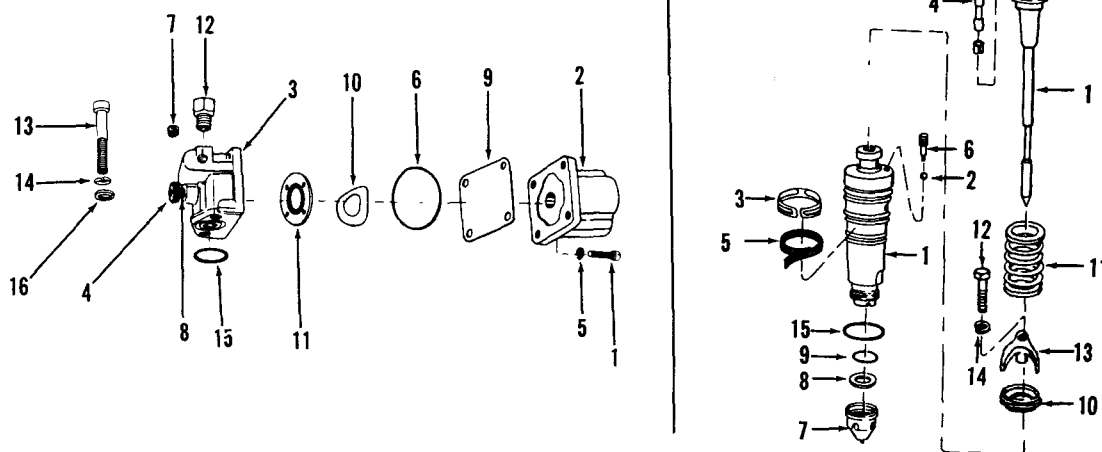


Figure 24
SHUTDOWN VALVE AND INJECTOR

6212145

Part Number	Part Name	No. Req.	Fig. No.	Ref. No.	Part Number	Part Name	No. Req.	Fig. No.	Ref. No.
BM-79258	Injector assembly	8				Shutdown Valve			
BM-79345	Body and plunger	8	24	1	BM-69973	Valve, shutdown (12 volt)	1		
147626	Ball, check	8	24	2	S-1214	Capscrew, coil to housing	4	24	1
136042	Clamp, injector screen	8	24	3	134072	Coil assembly (12 volt)	1	24	2
147559	Gasket, retainer	8	24	4	S-254	Nut	1		
140470	Link, plunger	8	24	4	129826	Housing, valve	1	24	3
148338	Orifice, injector	8			129838	Knob, override	1	24	4
136749	Screen, body	8	24	5	S-607	Lockwasher	4	24	5
147558	Retainer, ball	8	24	6	129888	"O" ring, coil to housing	1	24	6
BM-78687	Cup, injector (159984)	8	24	7	114791	"O" ring, shaft	1		
62409	Gasket, cup	8	24	8	70295	Plug, pipe	1	24	7
70776	"O" ring, cup	8	24	9	143679	Shaft, override	1	24	8
148524	Guide, injector spring	8	24	10	129839	Shield, fuel	1	24	9
128040	Spring, injector	8	24	11	129768	Spring	1	24	10
131430	Capscrew, injector	8	24	12	129827	Valve	1	24	11
128002	Clamp, injector to head	8	24	13	S-189	Capscrew	2	24	13
S-604	Lockwasher	8	24	14	S-1027	Connection	1	24	12
101754	"O" ring, injector	8	24	15	S-600	Lockwasher	2	24	14
					154087	"O" ring	1	24	15
	Fuel Tubing								
S-955	Bushing	2							
S-102	Capscrew	4							
70467	Clip	2							
70468	Clip	2							
147991	Clip	1							
S-1004-1	Elbow	2							
114850	Spacer	8							
S-1054	Tee	1							
160485	Tube, supply R.B.	1							
S-1023-A	Nut	2							
160486	Tube, supply L.B.	1							
S-1023-A	Nut	2							
156126	Tube, drain	1							
S-1051	Nut	2							

PARTS INDENTED ARE INCLUDED IN THE PART UNDER WHICH THEY ARE INDENTED

ELECTRICAL EQUIPMENT

Electrical equipment is not manufactured by the Cummins Engine Company, Inc. Complete service for electrical equipment may be obtained from the manufacturers, The Delco-Remy Company at Anderson, Indiana, The Leece-Neville Company at Cleveland, Ohio, The Electric Autolite Company at Toledo, Ohio, or from their service stations. Address of nearest service station may be obtained from the manufacturer.

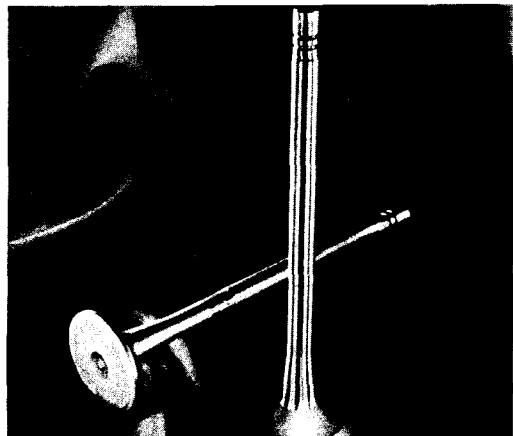
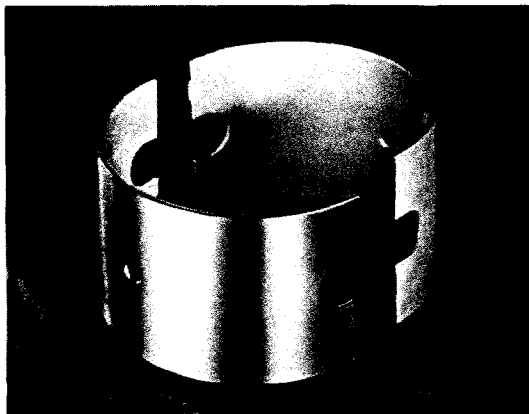
Part Number	Part Name	No. Req.	Fig. No.	Ref. No.	Part Number	Part Name	No. Req.	Fig. No.	Ref. No.
156123	Bracket, generator (high mount fan)	1							
156129	Bracket, generator adjusting link	1			43604	Starting Motor			
141711	Belt, generator drive	1				Motor, starting 24/32 volt (Leece-Neville)	1		
106069	Capscrew, swivel	2			153582	Capscrew, mounting	3		
S-137	Capscrew, bracket	4			S-603	Lockwasher	3		
S-112	Capscrew, adjusting link	1			140106	Spacer	1		
S-155	Capscrew, generator adjusting	2							
S-145	Capscrew, adjusting link bracket	2							
42568	Fan and baffle, generator	1							
43813	Generator (Leece-Neville)	1							
158306	Link, generator adjusting	1							
S-604	Lockwasher	5							
S-606	Lockwasher, fan to generator	4							
S-608	Lockwasher	1							
S-610	Lockwasher	2							
S-605	Lockwasher	2							
S-231	Nut, swivel bolt	2							
S-200	Nut, bracket	1							
141856	Pulley, generator	1							
42796	Regulator, voltage (Leece-Neville)	1							
S-1319	Screw, baffle to generator	4							
102846	Switch, starter	1							
119898	Switch, series-parallel	1							

PARTS INDENTED ARE INCLUDED IN THE PART UNDER WHICH THEY ARE INDENTED

Part Number	Part Name	No. Req.	Fig. No.	Ref. No.	Part Number	Part Name	No. Req.	Fig. No.	Ref. No.
<p>FLYWHEEL AND RING GEAR</p> <p>Flywheel and ring gears have been designed to adapt the Cummins Diesel Engine to hundreds of different installations. For this reason, these assemblies are not listed.</p> <p>Your Cummins Distributor will record flywheel assemblies and ring gear part numbers in the front of this book. Use this information when ordering a flywheel or ring gear to replace original equipment.</p>					BM-77407	GASKET SETS	1		
					BM-77409	Gasket set, engine	1		
					BM-68356	Gasket set, cylinder head	1		
						Gasket set, fuel pump	1		

PARTS INDENTED ARE INCLUDED IN THE PART UNDER WHICH THEY ARE INDENTED

FOR PERFORMANCE YOU CAN COUNT ON



SPECIFY CUMMINS REPLACEMENT PARTS