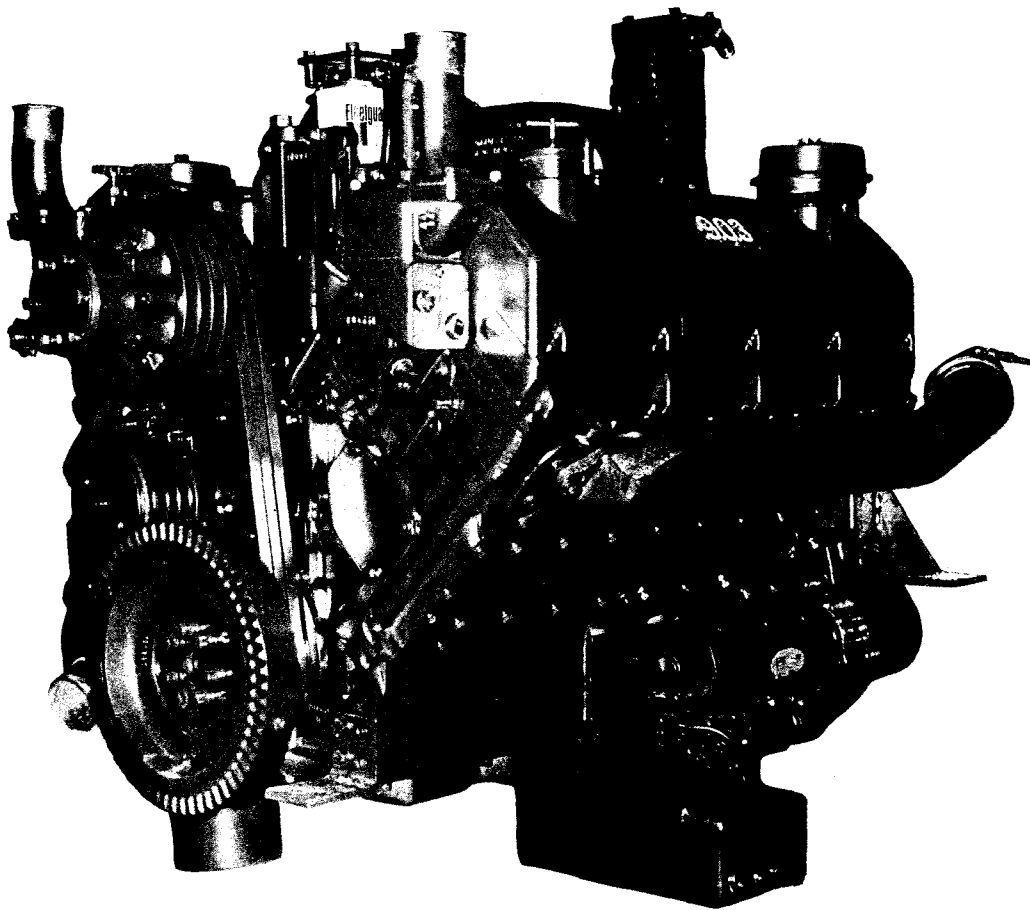




Cummins Parts Catalog

Model: V-903; VT-903

Bulletin: 967103-C



Parts Ordering for: V-903, VT-903 Series

Genuine Cummins Parts and service facilities are world-wide. There are more than 2400 Cummins Sales and Service locations in the principal cities of the United States and Canada, and more than 500 Sales and Service locations situated elsewhere throughout the free world. Each distribution outlet is thoroughly equipped with technical data, factory-trained mechanics, modern equipment and a full, adequate stock of Genuine Cummins Parts.

For quicker and better service, your parts requirements should be ordered from your nearest Cummins Distributor or Dealer. At any of the locations prompt, intelligent, courteous service is a basic trademark. Each is ready and eager to help in every possible way through personal contact or through the mail — at your convenience.

The satisfactory ordering and receiving of parts by the purchaser is greatly dependent upon the proper use of available information. In order that all avoidable errors may be eliminated, the following instructions are offered as the purchaser's guide:

1. Write your order clearly, using a typewriter if possible.

2. Be sure to list the correct part number. If in doubt as to the correct part number, state the model and serial number of the engine on which the part is to be used. Part numbers are usually located in various places on the part itself.
3. When possible, arrange your purchase order in part number numerical sequence.
4. Always specify shipping instructions — "Best Way" is satisfactory if you have no preference
5. State your company name and shipping address clearly.

Genuine Cummins Parts mean **QUALITY!** They're designed and engineered to fit best in your Cummins Diesel. Each part is made of the highest quality material — on the most accurate of machines — by the top craftsmen of the trade.

You can be sure a Genuine Cummins Part will fit better — do the job better — lessen the chances of costly breakdown. When you buy replacement parts, buy quality. Buy Genuine Cummins Parts!

YOU OWN THE BEST . . . REPAIR WITH THE BEST

This Parts Catalog contains standard parts information for the V-903, V-903-C and the VT-903 Automotive Application Diesel Engines.

Auto = Automotive application
B = Off highway application, less air compressor.
C = Construction and mining application, mobile type of equipment.
P = Industrial application, radiator cooled, stationary unit.

Part numbers appearing in () are for identification purposes only and should not be used when ordering service replacement parts.

The form below is provided for your convenience and when properly filled out, will allow proper identification of your unit and the normal maintenance items. Parts information errors that could cause extended down time could be avoided if the information on this is referred to when ordering parts from your Cummins Distributor or Dealer.

Engine Model _____ Engine Serial No. _____

MFG Make _____ Model _____ Chassis No. _____

Fuel Pump Assembly No. _____ Injector No. _____

Belt, Fan _____ Belt, Water Pump _____ Belt, Gen. _____

Element, Fuel Filter _____ Full Flow Lub. Filter _____

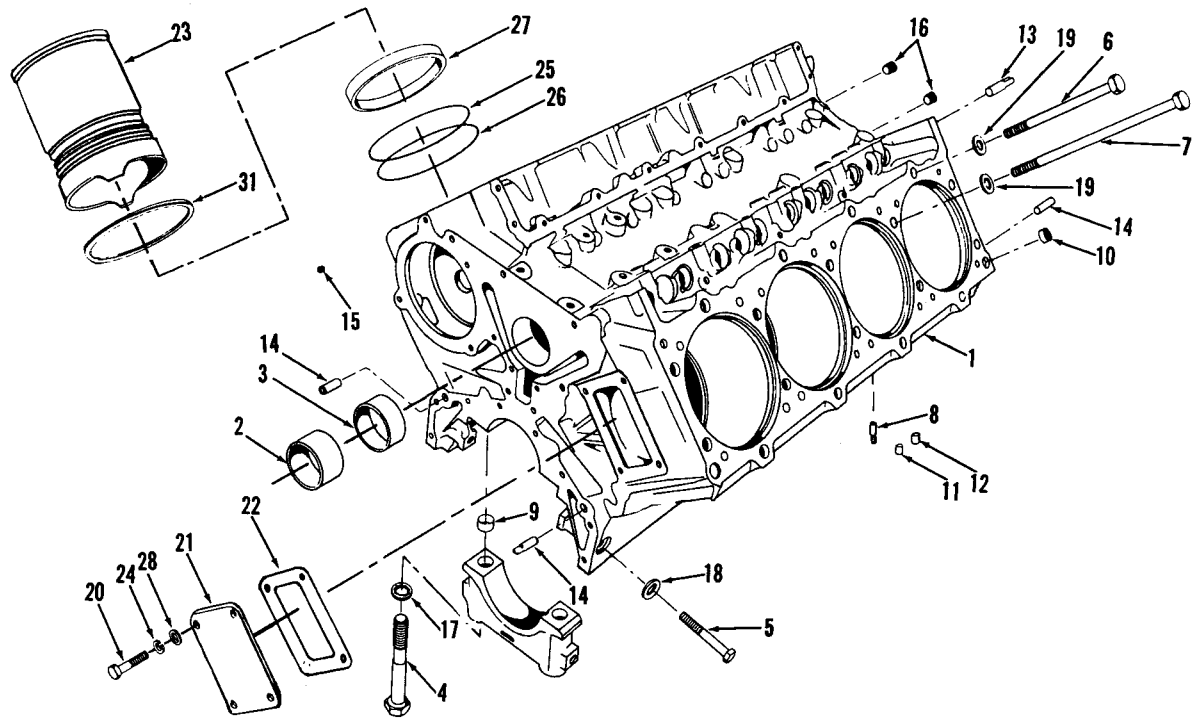
Air Cleaner _____ By-Pass Lub. Filter _____

Special Equipment _____

Cummins Distributor_____

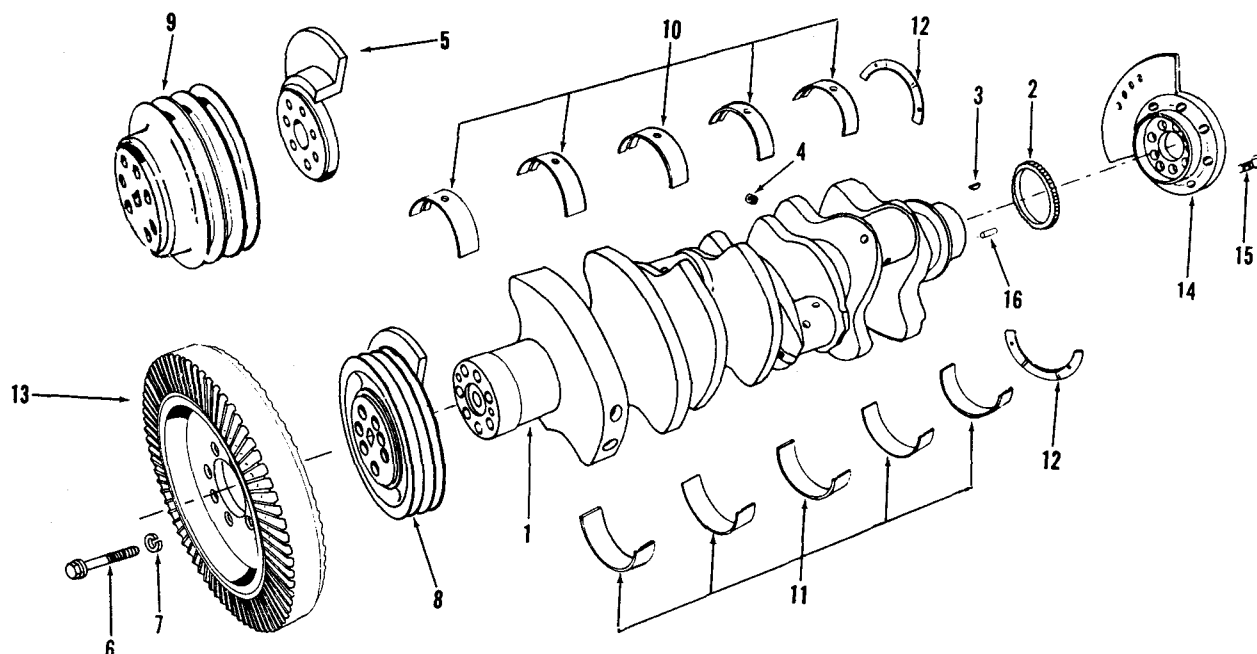
Table of Contents

	Page	Grid		Page	Grid
Air Compressor—Cummins Compact	30-31	C9,10	Fuel Pump Drive	33	C12
Air Intake Manifold	24	C3	Fuel Pump Damper	34	D1
Air Cleaner	25-26	C4,5	Fuel Pump	34	D1
Alternator	36	D3	Fuel Tubing	36	D3
Barring Mechanism	32	C11	Gasket Sets	36	D3
Breather	9	A12	Gear Housing	10	B1
Camshaft And Cover	5	A8	Gear Housing Cover	32	C11
Camshaft Bushings	1	A4	Injector	35	D2
Connecting Rod	3	A6	Lubricating Oil Filter Cooler	16	B7
Corrosion Resistor	22-23	C1,2	Lubricating Oil Pump	14-15	B5,6
Crankshaft And Main Bearing Shells	2	A5	Lubricating Oil By-Pass Filter	17	B8
Cylinder Block	1	A4	Oil Pan	12-13	B3,4
Cylinder Head	8	A11	Pistons	3	A6
Cylinder Head Cover	9	A12	Piston Rings	3	A6
Cylinder Liner	1	A4	Push Rods	6	A9
Dipstick And Tube	12-13	B3,4	Rear Bearing Support	32	C11
Electrical Equipment	36	D3	Rocker Levers	7	A10
Exhaust Manifold	27	C6	Shutdown Valve	35	D2
Fan Hub	19-20	B10,11	Starting Motor	36	D3
Flywheel Adapter	2	A5	Thermostat And Housing	21	B12
Flywheel Housing	37	D4	Tappets	6	A9
Flywheel And Ring Gear	37	D4	Turbocharger	28-29	C7,8
Front Cover	4	A7	Vibration Damper	2	A5
Front Water Header Cover	1	A4	Water Header Cover	11	B2
Fuel Filter	34	D1	Water Pump And Pulley	18	B9
Fuel Gear Pump	34	D1			



ENGINE APPLICATION		AUTOMOTIVE		X		B - OFF-HIGHWAY		C - CONSTRUCTION & INDUSTRIAL		X		P - INDUSTRIAL POWER	
PART NUMBER	PART NAME	NO. REQ'D.	REF. NO.	PART NUMBER	PART NAME	NO. REQ'D.	REF. NO.						
CYLINDER BLOCK				MOUNTING PARTS									
AR-07882	Block, cylinder (179195)	1	1	S-112	Capscrew, water header cover (3/8"-16 x 1")	4	20						
200780	Bushing, camshaft	2	2		Cover, water header	1	21						
200790	Bushing, camshaft	3	3	151249	Gasket, water header cover	1	22						
177376	Capscrew, main bearing cap	10	4	182459	Liner, cylinder	8	23						
S-133	Capscrew, main bearing side lock	10	5	203170	Lockwasher (3/8")	4	24						
209700	Capscrew, cylinder head	26	6	S-604	Data plate (Auto application)	1							
177735	Capscrew, cylinder head	10	7	203247	Data plate (C application)	1							
67211	Dowel, rear main bearing	2	8	203239	Ring, packing cylinder liner (black, top)	8	25						
164455	Dowel, ring rear main bearing cap	5	9	194115	Ring, packing cylinder liner (red, bottom)	8	26						
100973	Dowel, ring head to block	4	10		Seal, crevice	8	27						
128765	Dowel, thrust ring	2	11	183049	Screw, nameplate	4							
128766	Dowel, thrust ring	2	12		Washer, plain (13/32")	4	28						
102957	Dowel, gear housing to block (Diamond)	2	13	185382									
69562	Dowel, (Master)	3	14	S-2286									
S-911-B	Plug, pipe	6	15	S-602									
S-915-A	Plug, pipe	2	16	159098	Shim, liner .007	A/R	31						
140218	Washer, main bearing cap	10	17	159099	Shim, liner .008	A/R							
S-658	Washer, main bearing side lock	10	18	159100	Shim, liner .009	A/R							
69699	Washer, cylinder head capscrew	36	19	159101	Shim, liner .020	A/R							
				159102	Shim, liner .031	A/R							
				159103	Shim, liner .062								

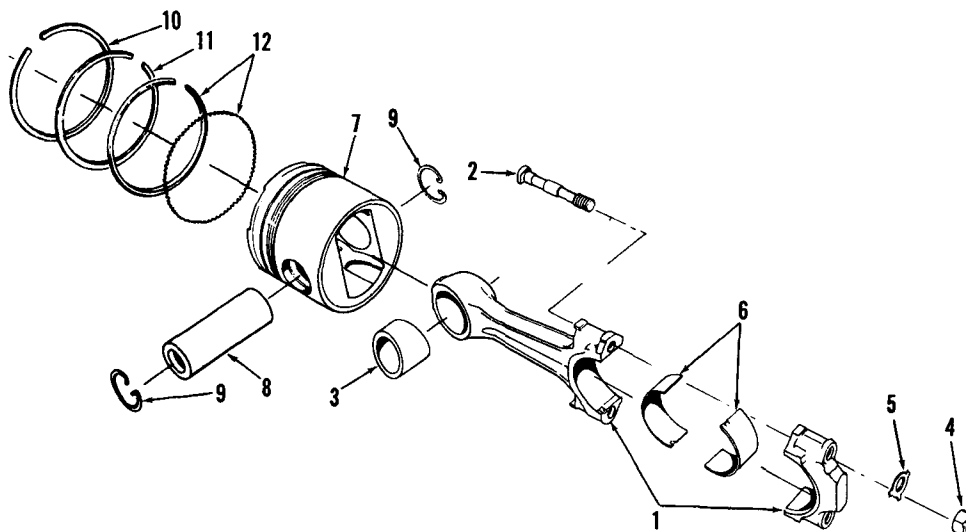
PARTS INDENTED ARE INCLUDED IN THE PART UNDER WHICH THEY ARE INDENTED



ENGINE APPLICATION	AUTOMOTIVE	X	B - OFF-HIGHWAY	C - CONSTRUCTION & INDUSTRIAL	X	P - INDUSTRIAL POWER
--------------------	------------	---	-----------------	-------------------------------	---	----------------------

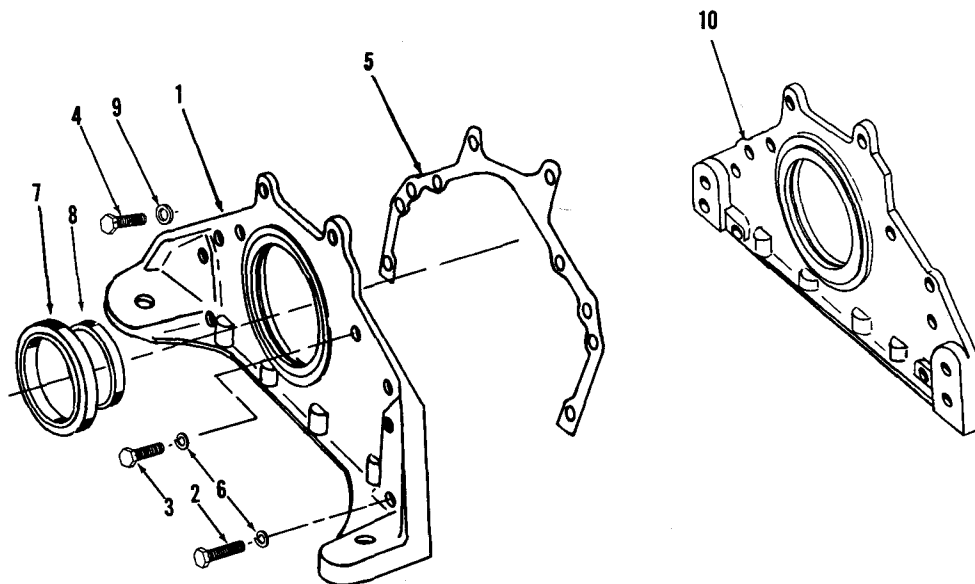
PART NUMBER	PART NAME	NO. REQ'D.	REF. NO.	PART NUMBER	PART NAME	NO. REQ'D.	REF. NO.
CRANKSHAFT				VIBRATION DAMPER			
AR-08806	Crankshaft assembly	1		AR-03556	Damper, vibration (195327)	1	13
208600	Crankshaft	1	1				
179464	Gear, crankshaft	1	2				
144131	Key, gear	1	3				
S-911-B	Plug, pipe	5	4				
193789	Adapter, crankshaft pulley (C application)	1	5	193787	Adapter, flywheel	1	14
193792	Capscrew (Auto application)	7	6	183122	Capscrew, adapter to crankshaft	7	15
197576	Capscrew (C application)	7	6	60408	Dowel, adapter to crankshaft	2	16
S-603	Lockwasher (5/8")	7	7				
208682	Pulley, crankshaft (Auto application)	1	8				
197575	Pulley, crankshaft (C application)	1	9				
AR-03640	* Main bearing set (Std.)	5					
193660	Shell, upper main bearing	5	10				
193670	Shell, lower main bearing	5	11				
159960	Ring, thrust	4	12				
	* Main bearings may be purchased in .010", .020" and .030" undersize.						

PARTS INDENTED ARE INCLUDED IN THE PART UNDER WHICH THEY ARE INDENTED



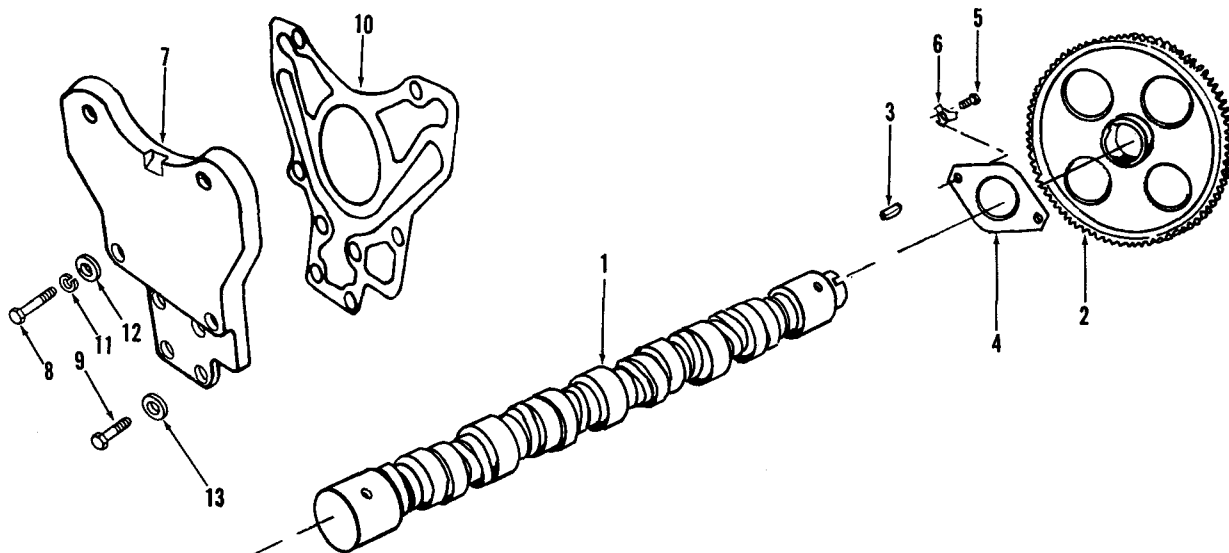
ENGINE APPLICATION		AUTOMOTIVE		X	B - OFF-HIGHWAY		C - CONSTRUCTION & INDUSTRIAL		X	P - INDUSTRIAL POWER	
PART NUMBER	PART NAME	NO. REQ'D.	REF. NO.	PART NUMBER	PART NAME	NO. REQ'D.	REF. NO.				
	CONNECTING ROD				PISTON RINGS						
BM-98470	Rod, connecting (189761)	8	1	AR-05100	Ring set, piston (Std.)	8					
156304	Bolt, connecting rod	16	2	210050	Ring, compression (top)	8	10				
189763	Bushing, piston pin	8	3	194600	Ring, compression (Intermediate)	8	11				
139438	Nut, connecting rod	16	4	194610	Ring, oil control (bottom)	8	12				
139950	Plate, lock	16	5								
189770	* Shell, connecting rod bearing (Std.)	16	6	*	Connecting rod bearing shells may be purchased in .010", .020" or .030" undersize.						
	PISTON										
	V-903										
AR-03650	Piston assembly (Std.)	8									
194060	Piston	8	7								
140120	Pin, piston	8	8								
155267	Snap ring, piston pin	16	9								
	VT-903										
AR-09550	Piston assembly (Std.)	8									
211040	Piston	8	7								
140120	Pin, piston	8	8								
155267	Snap ring, piston pin	16	9								

PARTS INDENTED ARE INCLUDED IN THE PART UNDER WHICH THEY ARE INDENTED



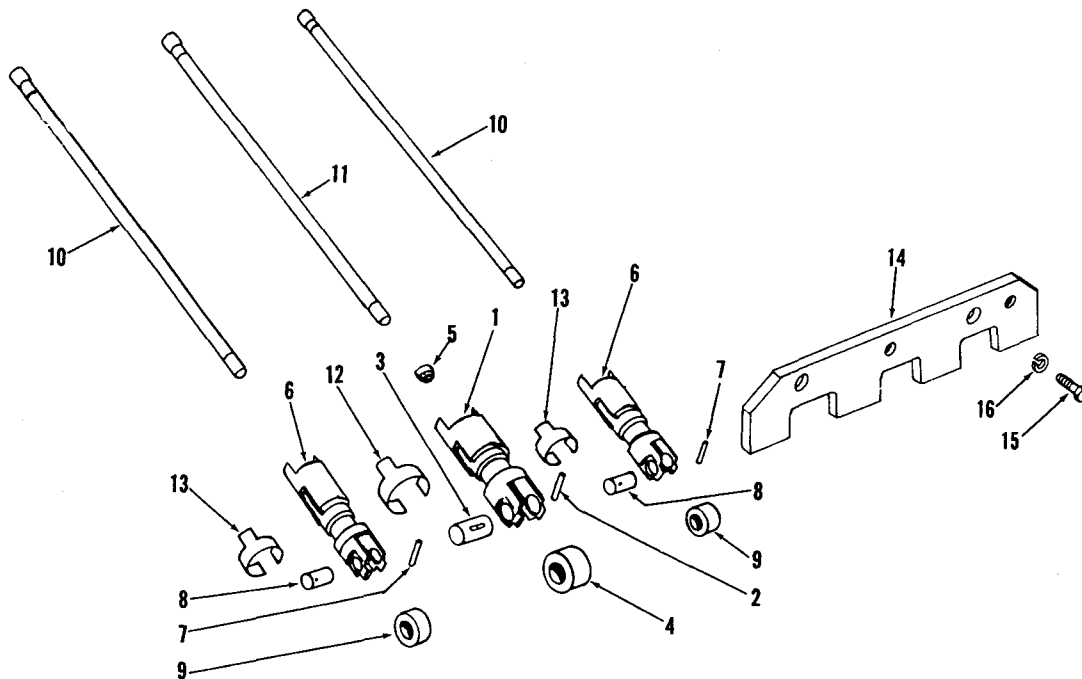
ENGINE APPLICATION		AUTOMOTIVE		X B - OFF-HIGHWAY		C - CONSTRUCTION & INDUSTRIAL		X P - INDUSTRIAL POWER	
PART NUMBER	PART NAME	NO. REQ'D.	REF. NO.	PART NUMBER	PART NAME	NO. REQ'D.	REF. NO.		
	FRONT COVER								
	Auto Application								
193926	Cover, front	1	1						
	MOUNTING PARTS								
108707	Capscrew (3/8"-16 x 1 1/2")	4	2						
S-172-B	Capscrew (3/8"-16 x 1 1/8")	2	3						
202601	Capscrew, Nylok	2	4						
181093	Gasket, front cover	1	5						
S-604	Lockwasher (3/8")	6	6						
AR-09212	Seal and sleeve	1							
199663	Seal, front cover	1	7						
209732	Sleeve, front cover	1	8						
S-679	Washer, copper (25/64")	2	9						
	C Application								
	Same as Auto application except:								
193593	Cover, front	1	10						

PARTS INDENTED ARE INCLUDED IN THE PART UNDER WHICH THEY ARE INDENTED



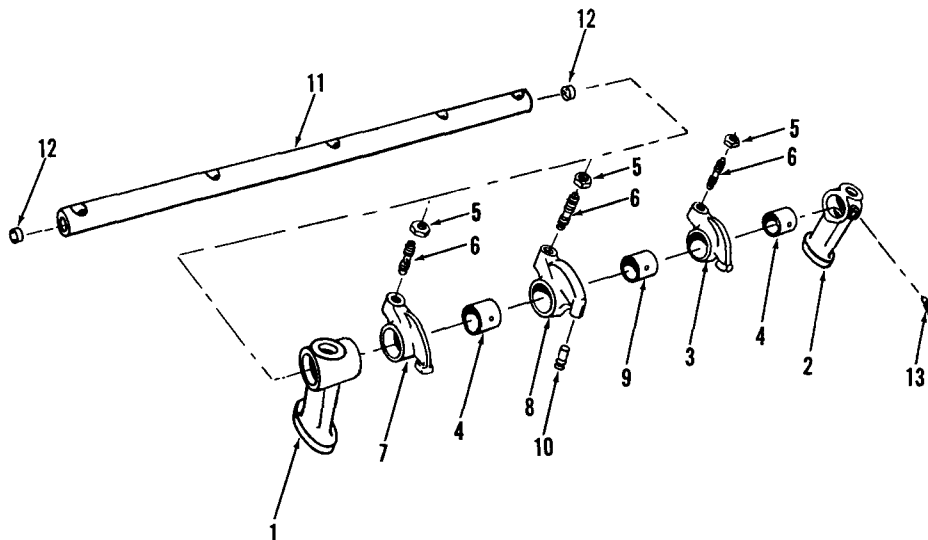
ENGINE APPLICATION		AUTOMOTIVE	X	B - OFF-HIGHWAY	C - CONSTRUCTION & INDUSTRIAL	X	P - INDUSTRIAL POWER
PART NUMBER	PART NAME	NO. REQ'D.	REF. NO.	PART NUMBER	PART NAME	NO. REQ'D.	REF. NO.
CAMSHAFT				COVER			
V-903				All Models			
AR-02809	Camshaft	1		193919	Cover, camshaft	1	7
195490	Camshaft	1	1	108707	Capscrew (3/8"-16 x 1 1/2")	4	8
179463	Gear, camshaft	1	2	202601	Capscrew, Nylok	4	9
S-302	Key, gear	1	3	189545	Gasket, camshaft cover	1	10
169747	Plate, camshaft thrust	1	4	S-604	Lockwasher (3/8")	4	11
S-117	Capscrew (3/8"-16 x 3/4")	2	5	S-602	Washer, plain (13/32")	4	12
68908	Lockplate, capscREW	2	6	S-679	Washer, copper (25/64")	4	13
VT-903							
AR-09416	Camshaft	1					
195490	Camshaft	1	1				
179463	Gear, camshaft	1	2				
200709	Key, gear	1	3				
169747	Plate, camshaft thrust	1	4				
S-117	Capscrew (3/8"-16 x 3/4")	2	5				
68908	Lockplate, capscREW	2	6				

PARTS INDENTED ARE INCLUDED IN THE PART UNDER WHICH THEY ARE INDENTED



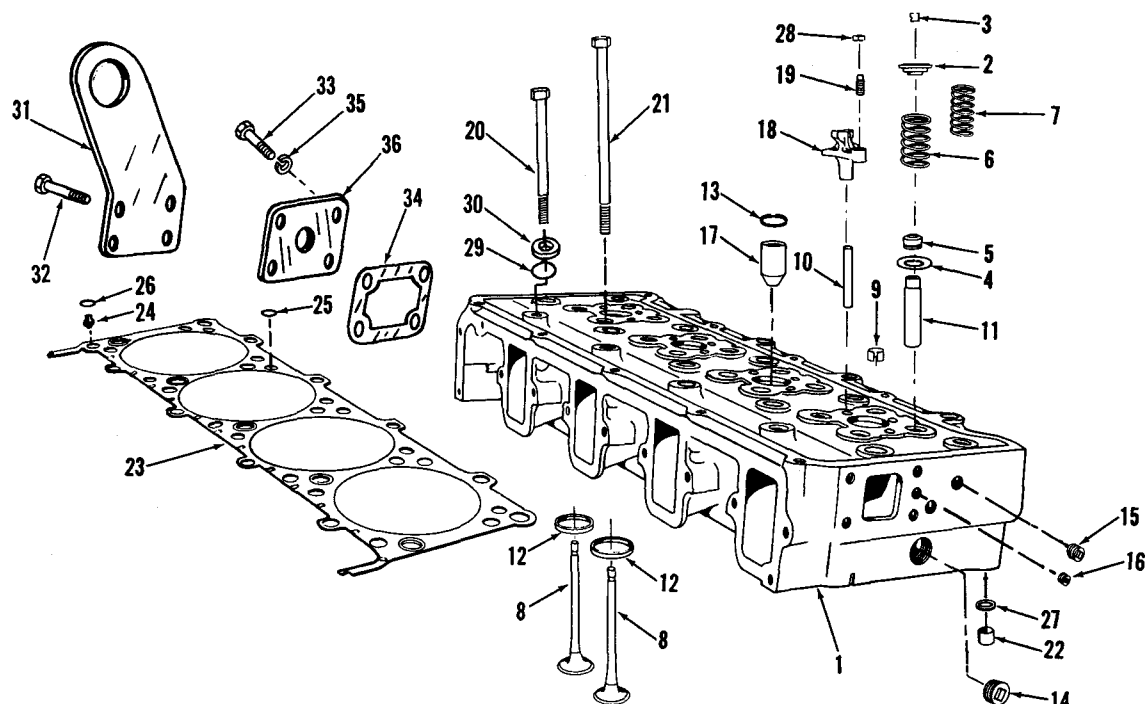
ENGINE APPLICATION		AUTOMOTIVE		X	B - OFF-HIGHWAY		C - CONSTRUCTION & INDUSTRIAL		X	P - INDUSTRIAL POWER	
PART NUMBER	PART NAME	NO. REQ'D.	REF. NO.		PART NUMBER	PART NAME	NO. REQ'D.	REF. NO.			
	PUSH RODS and TAPPETS										
BM-97366	Tappet, injector (171087)	8	1								
108187	Lockwire, injector tappet	8	2								
114223	Pin, injector tappet roller	8	3								
154571	Roller, injector tappet	8	4								
107738	Socket, cam follower	8	5								
BM-97368	Tappet, valve (171089)	16	6								
108187	Lockwire	16	7								
169327	Pin, valve tappet roller	16	8								
152082	Roller, valve tappet	16	9								
169351	Rod, valve push	16	10								
169352	Rod, injector push	8	11								
156439	Spring, injector tappet	8	12								
156438	Spring, valve tappet	16	13								
171085	Plate, tappet guide	8	14								
S-115	Capscrew (5/16"-18 x 7/8")	16	15								
S-605	Lockwasher (5/16")	16	16								

PARTS INDENTED ARE INCLUDED IN THE PART UNDER WHICH THEY ARE INDENTED



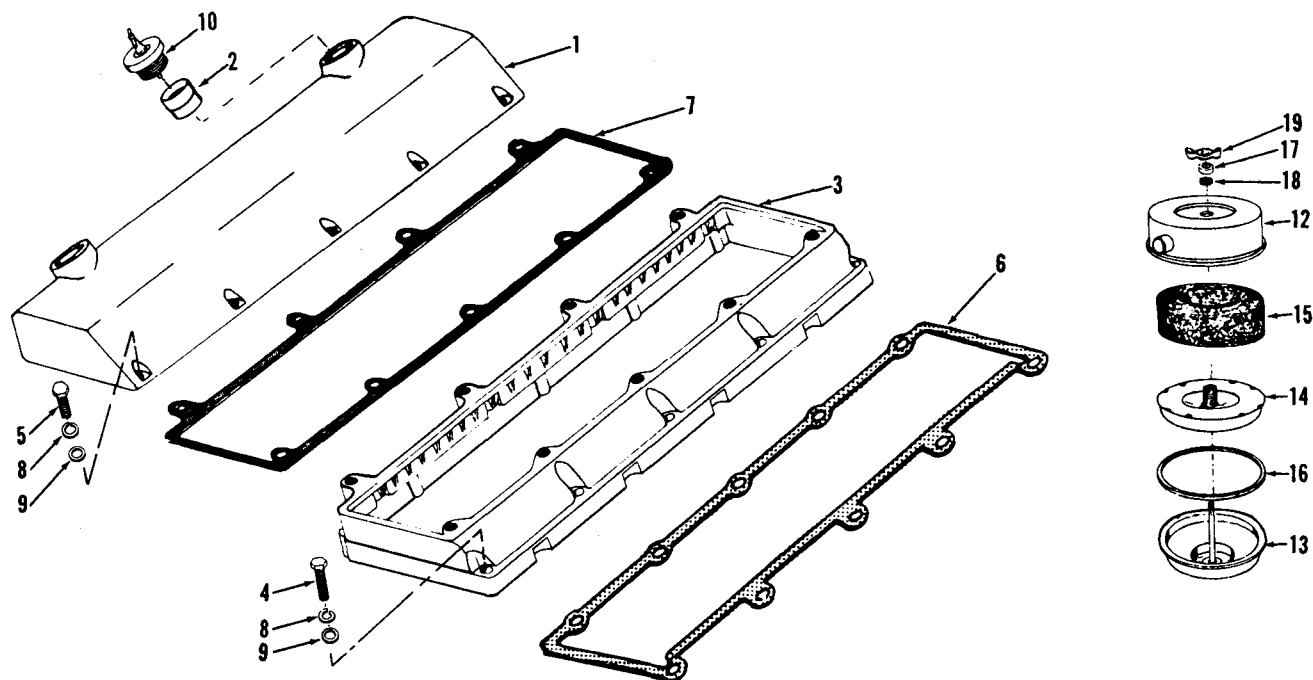
ENGINE APPLICATION		AUTOMOTIVE		X	B - OFF-HIGHWAY		C - CONSTRUCTION & INDUSTRIAL		X	P - INDUSTRIAL POWER	
PART NUMBER	PART NAME	NO. REQ'D.	REF. NO.	PART NUMBER	PART NAME	NO. REQ'D.	REF. NO.				
	ROCKER LEVERS										
178334	Bracket, rocker lever shaft	8	1								
178335	Bracket, rocker lever shaft	2	2								
BM-98350	Lever, exhaust valve rocker	8	3								
BM-98349	Lever and bushing (168818)	8									
141875	Bushing, valve rocker lever	8	4								
S-212	Nut, adjusting screw	8	5								
168306	Screw, adjusting	8	6								
BM-98352	Lever, intake valve rocker	8	7								
BM-98351	Lever and bushing (168819)	8									
141875	Bushing, valve rocker lever	8	4								
S-212	Nut, adjusting screw	8	5								
168306	Screw, adjusting	8	6								
AR-02305	Lever, injector rocker	8	8								
AR-02304	Lever and bushing (196565)	8									
146975	Bushing, injector lever	8	9								
194037	Socket, injector lever	8	10								
203933	Plug, rocker lever	8									
S-212	Nut, adjusting screw	8	5								
168306	Screw, adjusting	8	6								
AR-09633	Shaft, rocker lever (204482)	2	11								
210036	Plug, rocker shaft	4	12								
168319	Screw, rocker shaft locating	2	13								

PARTS INDENTED ARE INCLUDED IN THE PART UNDER WHICH THEY ARE INDENTED



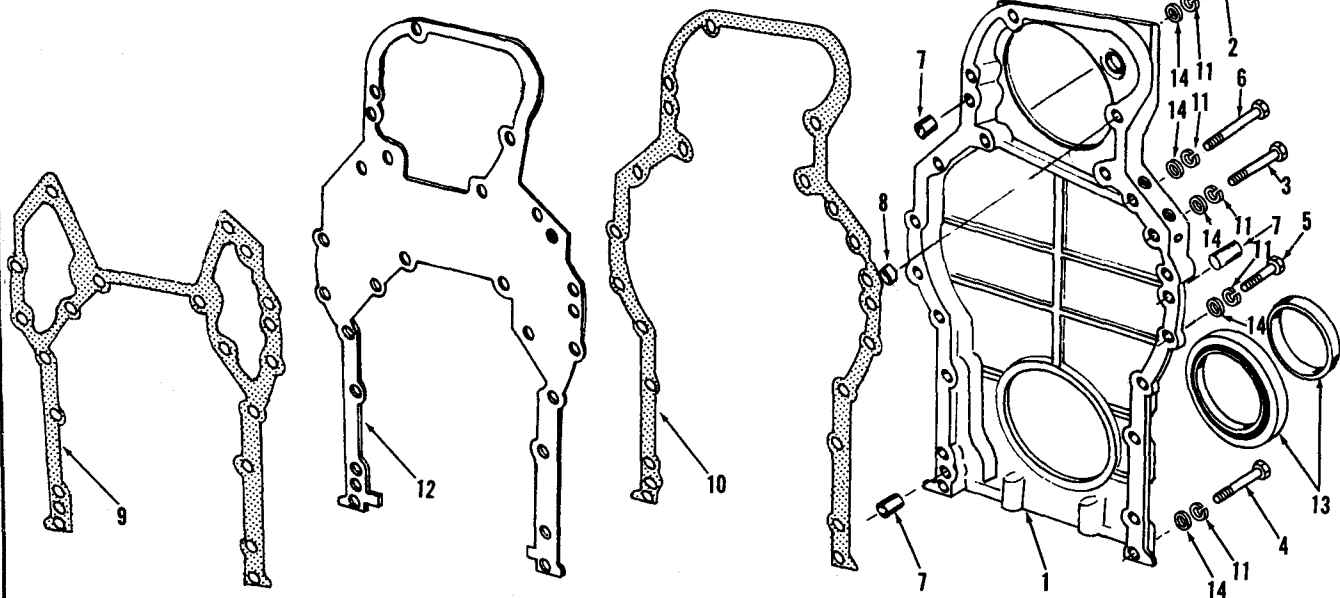
ENGINE APPLICATION		AUTOMOTIVE		X	B - OFF-HIGHWAY		C - CONSTRUCTION & INDUSTRIAL		X	P - INDUSTRIAL POWER	
PART NUMBER	PART NAME	NO. REQ'D.	REF. NO.	PART NUMBER	PART NAME	NO. REQ'D.	REF. NO.				
	CYLINDER HEAD										
BM-98358	Head assembly, cylinder (180100)	2	1	203131	Nut, crosshead	16	28				
146733	Guide, valve spring	32	2	145527	"O" ring	18	29				
127554	Half-collet, valve	64	3	69699	Washer, cylinder head	8	30				
200478	Plate, wear valve spring	32	4								
156641	Seal, intake valve	16	5		LIFTING BRACKET						
146731	Spring, valve (outer)	32	6								
146732	Spring, valve (inner)	32	7	189569	Bracket, lifting	1	31				
138887	Valve, exhaust and intake	32	8	S-172-B	Capscrew (3/8"-16 x 1 1/8")	4	32				
BM-98357	Head assembly, cylinder (180100)			S-112	Capscrew (3/8"-16 x 1")	4	33				
	without valves	2	1	180381	Gasket	2	34				
178336	Dowel, split ring	10	9	S-604	Lockwasher (3/8")	8	35				
138948	Guide, crosshead	16	10	187437	Plate	1	36				
138937	Guide, valve stem	32	11	S-911-B	Plug, pipe (1/8")	1					
127930	Insert, valve seat	32	12								
196641	"O" ring, injector sleeve	8	13								
S-995	Plug, pipe (3/4")	30	14								
S-911-B	Plug, pipe (1/8")	12									
S-910-B	Plug, pipe (1/4")	2	15								
70459	Plug, pipe	2	16								
202606	Sleeve, injector	8	17								
127931	Insert, valve seat (.010)	A/R									
127932	Insert, valve seat (.020)	A/R									
127933	Insert, valve seat (.030)	A/R									
127934	Insert, valve seat (.040)	A/R									
144896	Crosshead, intake valve	8	18								
144897	Crosshead, exhaust valve	8									
147389	Screw, adjusting	16	19								
209700	Capscrew, cylinder head	26	20								
177735	Capscrew, cylinder head	10	21								
100973	Dowel, ring	4	22								
AR-09571	Gasket, cylinder head (149973)	2	23								
198823	Retainer, "O" ring	2	24								
193949	Grommet, water	32	25								
193039	"O" ring	2	26								
150475	"O" ring, silicone	4	27								
203477	Gasket, push tube	2									
203476	Grommet, oil passage	10									
208971	Washer	18									

PARTS INDENTED ARE INCLUDED IN THE PART UNDER WHICH THEY ARE INDENTED



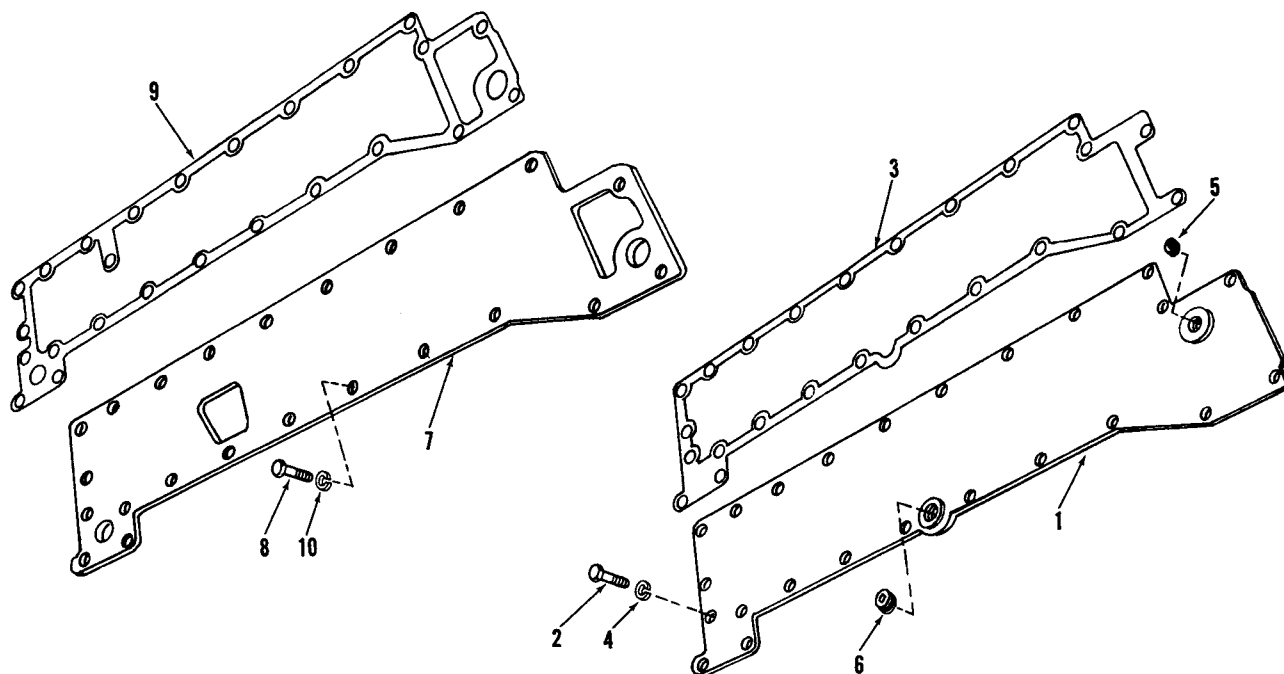
ENGINE APPLICATION		AUTOMOTIVE		B - OFF-HIGHWAY		C - CONSTRUCTION & INDUSTRIAL		P - INDUSTRIAL POWER	
				X				X	
PART NUMBER	PART NAME	NO. REQ'D.	REF. NO.	PART NUMBER	PART NAME	NO. REQ'D.	REF. NO.		
	CYLINDER HEAD COVER				BREATHER				
AR-08419	Cover, valve assembly	2		255180	Breather, crankcase	2			
203806	Cover, valve	2	1	255803	Body, upper	2	12		
101264	Tube, oil filler	2	2	255806	Body, lower	2	13		
180634	Housing, rocker lever	2	3	255809	Element, vapor	2	14		
	MOUNTING PARTS			255183	Element	2	15		
S-120	Capscrew (3/8"-16 x 1 3/4")	28	4	254608	Gasket	2	16		
S-172-B	Capscrew (3/8"-16 x 1 1/8")	10	5	255815	Gasket	2	17		
180391	Gasket, housing to head	2	6	255816	Washer	2	18		
171028	Gasket, housing to cover	2	7	250026	Wing nut (1/4"-20)	2	19		
S-604	Lockwasher (3/8")	38	8						
S-602	Washer, plain (13/32")	38	9						
101322	Cap, oil filler (Auto application)	2	10						
107981	Cap, oil filler (C application)	2	10						

PARTS INDENTED ARE INCLUDED IN THE PART UNDER WHICH THEY ARE INDENTED



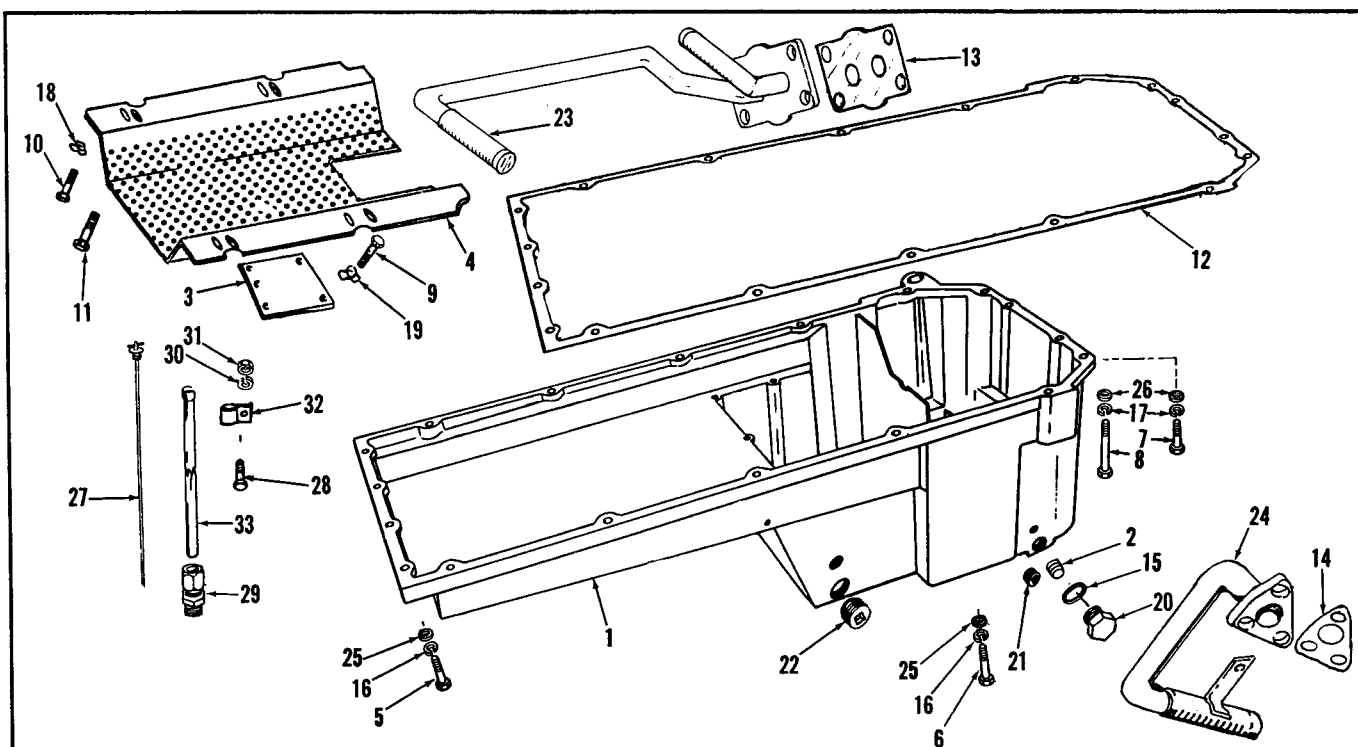
ENGINE APPLICATION		AUTOMOTIVE		X	B - OFF-HIGHWAY		C - CONSTRUCTION & INDUSTRIAL		X	P - INDUSTRIAL POWER	
PART NUMBER	PART NAME	NO. REQ'D.	REF. NO.	PART NUMBER	PART NAME	NO. REQ'D.	REF. NO.				
	GEAR HOUSING				C Application						
	Auto Application				Same as Auto application except:						
209768	Housing, gear (V-903)	1	1	OMIT:							
209913	Housing, gear (VT-903)	1	1								
	C Application				S-126	Capscrew (3/8"-16 x 2 1/2")	1	3			
					S-102-D	Capscrew (3/8"-16 x 3")	2	4			
199187	Housing, gear	1		S-163	Capscrew (3/8"-16 x 3 1/4")	1	6				
	MOUNTING PARTS			S-910-B	Plug, pipe	1					
	Auto Application			S-602	Lockwasher	14	14				
				ADD:							
S-141	Capscrew (3/8"-16 x 2 3/4")	1	2	S-138-B	Capscrew (3/8"-16 x 2 7/8")	2					
S-126	Capscrew (3/8"-16 x 2 1/2")	3	3	108707	Capscrew (3/8"-16 x 1 1/2")	1					
S-102-D	Capscrew (3/8"-16 x 3")	2	4	S-141	Capscrew (3/8"-16 x 2 3/4")	1					
108707	Capscrew (3/8"-16 x 1 1/2")	7	5								
S-163	Capscrew (3/8"-16 x 3 1/4")	1	6								
69562	Dowel	3	7								
170833	Dowel, ring	1	8								
179297	Gasket, plate to block	1	9								
179299	Gasket, plate to housing	1	10								
S-604	Lockwasher (3/8")	14	11								
179298	Plate, gear housing	1	12								
S-910-B	Plug, pipe (1/4")	2									
S-911-B	Plug, pipe (1/8")	1									
186908	Seal and sleeve, crankshaft	1	13								
S-602	Washer, plain (13/32")	14	14								

PARTS INDENTED ARE INCLUDED IN THE PART UNDER WHICH THEY ARE INDENTED



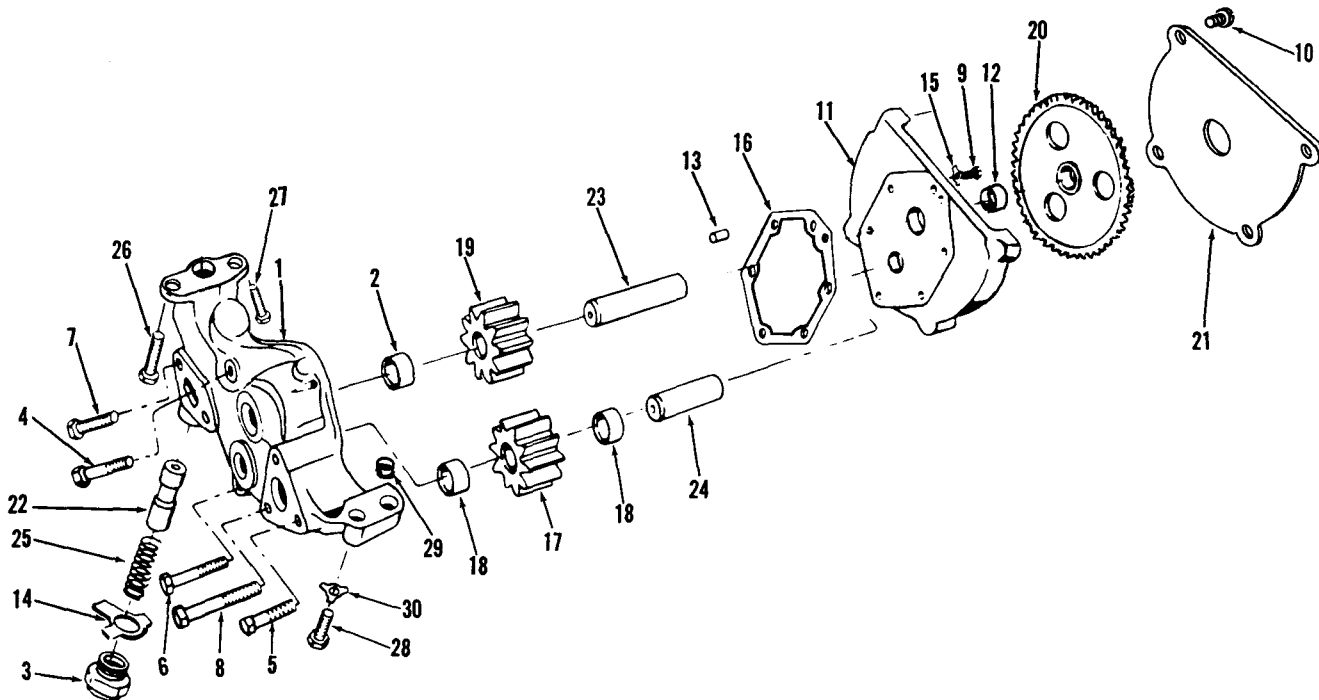
ENGINE APPLICATION		AUTOMOTIVE		X	B - OFF-HIGHWAY		C - CONSTRUCTION & INDUSTRIAL		X	P - INDUSTRIAL POWER	
PART NUMBER	PART NAME	NO. REQ'D.	REF. NO.	PART NUMBER	PART NAME	NO. REQ'D.	REF. NO.				
WATER HEADER COVERS											
LEFT BANK											
179426	Plate, water header cover	1	1								
S-112	Capscrew (3/8"-16 x 1")	24	2								
179427	Gasket, water header cover	1	3								
S-604	Lockwasher (3/8")	24	4								
S-908	Plug, pipe (3/8")	1	5								
S-915-A	Plug, pipe (1/2")	1	6								
RIGHT BANK											
187606	Plate, water header cover	1	7								
S-112	Capscrew (3/8"-16 x 1")	13	8								
179306	Gasket, water header cover	1	9								
S-604	Lockwasher (3/8")	13	10								

PARTS INDENTED ARE INCLUDED IN THE PART UNDER WHICH THEY ARE INDENTED



ENGINE APPLICATION		AUTOMOTIVE		B - OFF-HIGHWAY		C - CONSTRUCTION & INDUSTRIAL		X	P - INDUSTRIAL POWER	
PART NUMBER	PART NAME	NO. REQ'D.	REF. NO.	PART NUMBER	PART NAME	NO. REQ'D.	REF. NO.			
AR-08227 200845	OIL PAN			AR-05959	Tube, scavenger suction (196417)	1	23			
	Pan, oil (196681)	1	1	AR-05961	Tube, oil suction (196422)	1	24			
	Insert, heli-coil	2	2	S-602	Washer, plain (13/32")	17	25			
				S-626	Washer, plain (11/32")	4	26			
	MOUNTING PARTS				DIPSTICK and TUBE					
196425	Baffle, oil pan	1	3		* Dipstick	1	27			
196427	Baffle, block	1	4	137795	Capscrew (3/8"-16 x 5/8")	1	28			
108707	Capscrew (3/8"-16 x 1 1/2")	12	5	163759	Connection, tube	1	29			
S-163	Capscrew (3/8"-16 x 3 1/4")	2	6	S-604	Lockwasher	1	30			
S-119	Capscrew (5/16"-18 x 1 1/4")	2	7	S-223	Nut	1	31			
69470	Capscrew (5/16"-18 x 6")	2	8	160861	Support, tube	1	32			
S-112	Capscrew (3/8"-16 x 1")	7		180878	Tube, oil gauge	1	33			
S-199-B	Capscrew (3/8"-16 x 3 3/4")	1								
S-105	Capscrew (3/8"-16 x 3 1/2")	3								
S-114	Capscrew (1/4"-20 x 3/4")	5	9		* Note: Refer to part number stamped on dipstick					
S-117	Capscrew (3/8"-16 x 3/4")	3	10							
S-109	Capscrew (3/8"-16 x 7/8")	1	11							
178123	Clip, tube	1								
196949	Gasket, oil pan	1	12							
160640	Gasket	1	13							
144667	Gasket, suction tube	1	14							
67946	Gasket	2	15							
S-604	Lockwasher (3/8")	14	16							
S-605	Lockwasher (5/16")	4	17							
109319	Lockplate, baffle (3/8")	16	18							
117559	Lockplate, baffle (1/4")	5	19							
S-223	Nut	1								
110907	Plug, oil drain	2	20							
S-908	Plug, pipe (3/8")	2	21							
S-692	Plug, pipe (1")	2	22							
S-911-B	Plug, pipe (1/8")	1								
S-915-A	Plug, pipe (1/2")	2								
196421	Support, tube clip	1								

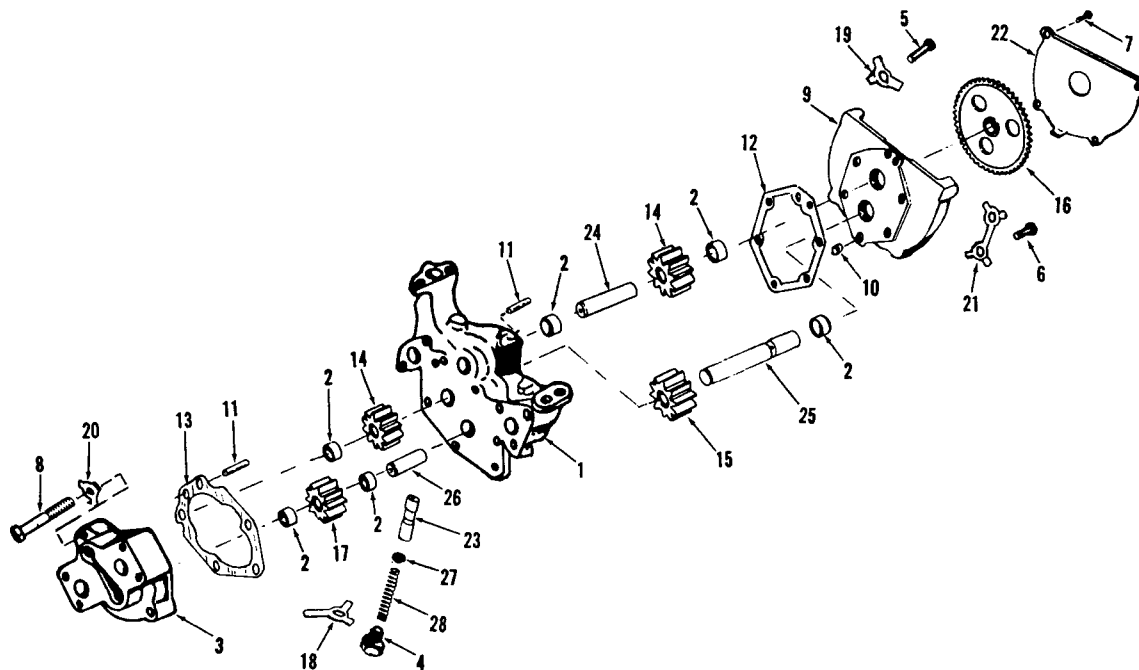
PARTS INDENTED ARE INCLUDED IN THE PART UNDER WHICH THEY ARE INDENTED



ENGINE APPLICATION	AUTOMOTIVE	X	B - OFF-HIGHWAY	C - CONSTRUCTION & INDUSTRIAL	P - INDUSTRIAL POWER
--------------------	------------	---	-----------------	-------------------------------	----------------------

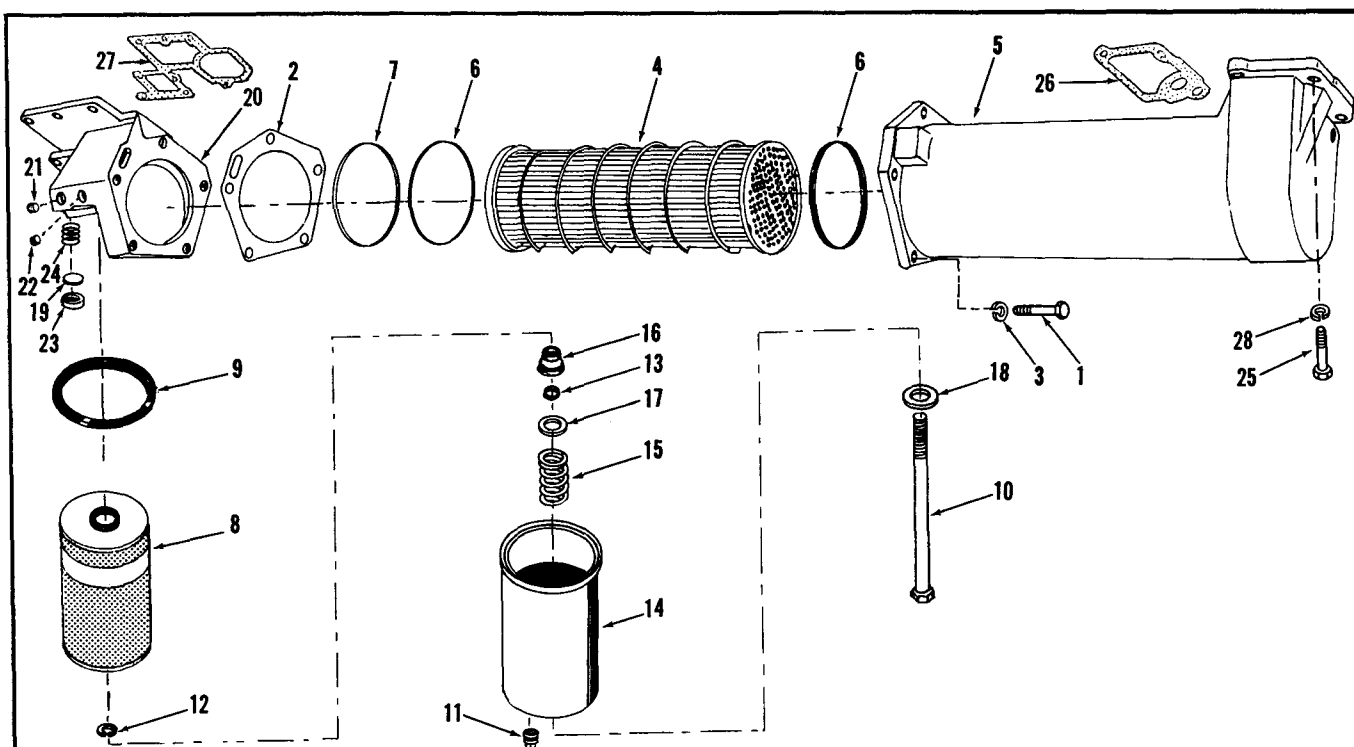
PART NUMBER	PART NAME	NO. REQ'D.	REF. NO.	PART NUMBER	PART NAME	NO. REQ'D.	REF. NO.
LUBRICATING OIL PUMP				MOUNTING PARTS			
BM-98346	Pump, lubricating oil (184086)	1		108707	Capscrew (3/8"-16 x 1 1/2")	1	26
BM-98344	Body and bushing (179457)	1	1	S-112	Capscrew (3/8"-16 x 1")	1	27
68365	Bushing	1	2	S-103-D	Capscrew (3/8"-16 x 1 1/4")	2	28
162653	Cap, pressure regulator	1	3	69236	Dowel, ring	2	29
S-104	Capscrew (3/8"-16 x 2 1/4")	1	4	175282	Lockplate	2	30
S-112	Capscrew (3/8"-16 x 1")	1	5				
S-126	Capscrew (3/8"-16 x 2 1/2")	1	6				
S-109	Capscrew (3/8"-16 x 7/8")	2	7				
S-102-D	Capscrew (3/8"-16 x 3")	2	8				
S-141	Capscrew (3/8"-16 x 2 3/4")	1	9				
114463	Capscrew	4	10				
BM-98341	Cover and bushing (180796)	1	11				
68365	Bushing	1	12				
70760	Dowel	1	13				
156083	Lockplate	1	14				
146933	Lockplate	8	15				
180795	Gasket	1	16				
BM-53120	Gear and bushing (43864)	1	17				
69514	Bushing	2	18				
43863	Gear, drive	1	19				
149151	Gear, main drive	1	20				
151033	Plate, cover	1	21				
127558	Plunger, pressure regulator	1	22				
143405	Shaft, drive	1	23				
143406	Shaft, idler	1	24				
68274	Spring, by-pass valve	1	25				

PARTS INDENTED ARE INCLUDED IN THE PART UNDER WHICH THEY ARE INDENTED



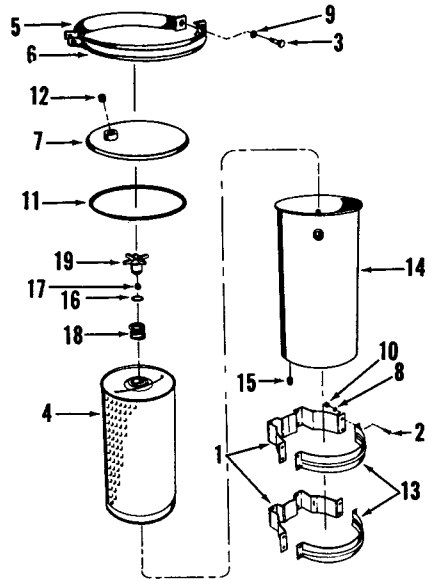
ENGINE APPLICATION		AUTOMOTIVE		B - OFF-HIGHWAY		C - CONSTRUCTION & INDUSTRIAL		X	P - INDUSTRIAL POWER	
PART NUMBER	PART NAME	NO. REQ'D.	REF. NO.	PART NUMBER	PART NAME	NO. REQ'D.	REF. NO.			
LUBRICATING OIL PUMP				MOUNTING PARTS						
AR-05956	Pump, lubricating oil (Double)	1		S-172-B	Capscrew (3/8"-16 x 1 1/8")	2				
AR-05949	Body, and bushing (196379)	1	1	S-103-D	Capscrew (3/8"-16 x 1 1/4")	1				
68365	Bushing	1	2	108707	Capscrew (3/8"-16 x 1 1/2")	1				
AR-05947	Body and bushing (196409)	1	3	69236	Dowel, ring	2				
68356	Bushing	1	2	175282	Lockplate	4				
162653	Cap, pressure regulator	1	4							
S-103-D	Capscrew (3/8"-16 x 1 1/4")	1	5							
S-109	Capscrew (3/8"-16 x 7/8")	5	6							
114463	Capscrew, plate	4	7							
S-104	Capscrew (3/8"-16 x 2 1/4")	2	8							
AR-05953	Cover and bushing (196405)	1	9							
68365	Bushing	2	2							
69236	Dowel, ring	1	10							
70760	Dowel	2	11							
143694	Gasket, oil pump	1	12							
196416	Gasket, scavenger pump	1	13							
43863	Gear	2	14							
131275	Gear, drive	1	15							
149151	Gear, drive, main	1	16							
AR-05955	Gear and bushing (162607)	1	17							
68365	Bushing	2	2							
156083	Lockplate	1	18							
146933	Lockplate	1	19							
68908	Lockplate	3	20							
158168	Lockplate	2	21							
157952	Plate, cover	1	22							
127558	Plunger, pressure regulator	1	23							
143405	Shaft, drive	1	24							
162685	Shaft, scavenger pump	1	25							
149718	Shaft, idler	1	26							
68251	Spacer	1	27							
68274	Spring, by-pass valve	1	28							

PARTS INDENTED ARE INCLUDED IN THE PART UNDER WHICH THEY ARE INDENTED



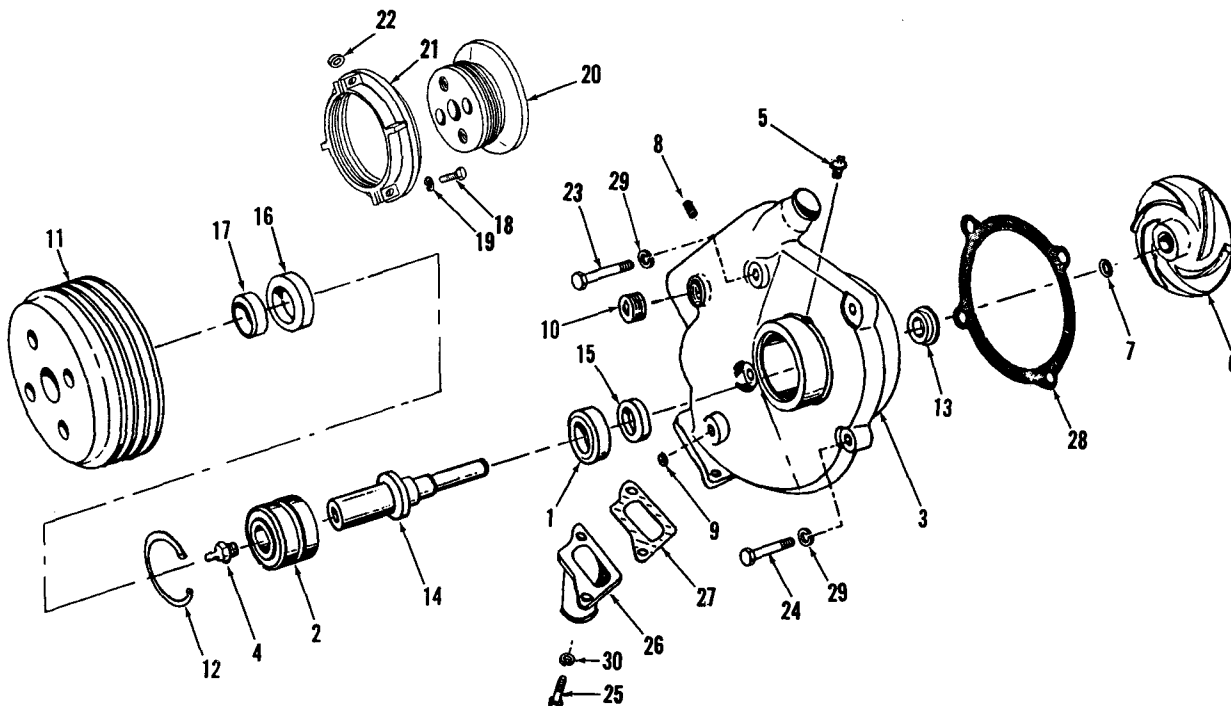
ENGINE APPLICATION		AUTOMOTIVE		X	B - OFF-HIGHWAY		C - CONSTRUCTION & INDUSTRIAL		X	P - INDUSTRIAL POWER	
PART NUMBER	PART NAME	NO. REQ'D.	REF. NO.	PART NUMBER		PART NAME	NO. REQ'D.	REF. NO.			
	FILTER COOLER					MOUNTING PARTS					
AR-07077	Filter cooler, lubricating oil (Combination)	1		S-104	Capscrew (3/8''-16 x 2 1/4'')	2					
S-103-D	Capscrew (3/8''-16 x 1 1/4'')	5	1	S-163	Capscrew (3/8-16 x 3 1/4'')	1					
187608	Gasket	1	2	108707	Capscrew (3/8''-16 x 1 1/2'')	8	25				
S-604	Lockwasher (3/8'')	5	3	209865	Gasket	1	26				
AR-01334	Cooler, lubricating oil	1		187610	Gasket	1	27				
186348	Element	1	4	S-604	Lockwasher (3/8'')	11	28				
204355	Housing	1	5								
148295	''O'' ring	2	6								
S-908	Plug, pipe (3/8'')	1									
S-915-A	Plug, pipe (1/2'')	3									
142616	Retainer	1	7								
AR-07076	Filter, lubricating oil	1									
LF-516	Filter, lubricating oil	1	8								
173368	Ring, rectangular sealing	1	9								
184529	Shell and bolt assembly	1									
184528	Bolt	1	10								
69901	Plug, pipe	1	11								
250843	Ring, snap	1	12								
153518	Seal, bolt	1	13								
184386	Shell	1	14								
173176	Spring	1	15								
183342	Support	1	16								
153520	Washer, bolt seal	1	17								
8265	Washer, copper	1	18								
AR-07075	Head, lubricating filter	1									
201707	Disc, by-pass	1	19								
204354	Head	1	20								
S-908	Plug, pipe (3/8'')	1	21								
S-995	Plug, pipe	1	22								
179063	Seat, by-pass	1	23								
202128	Spring, by-pass	1	24								

PARTS INDENTED ARE INCLUDED IN THE PART UNDER WHICH THEY ARE INDENTED



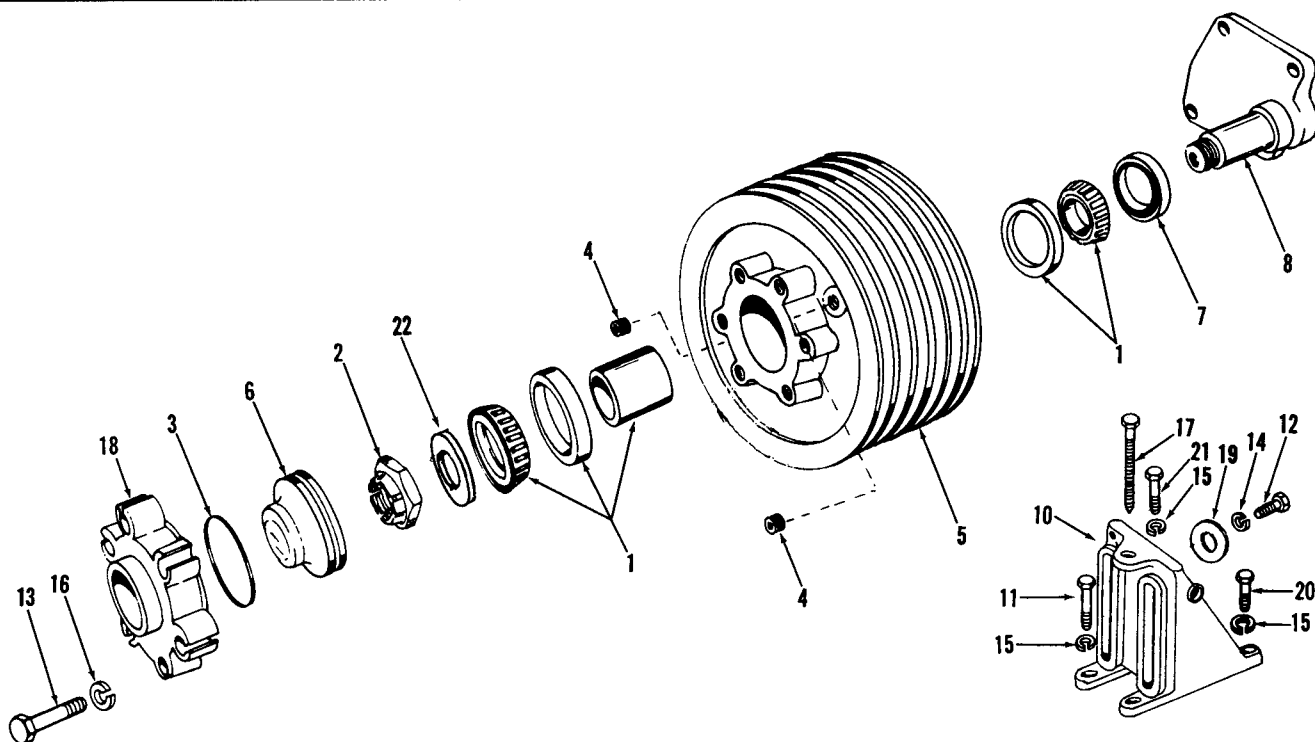
ENGINE APPLICATION		AUTOMOTIVE		B - OFF-HIGHWAY		C - CONSTRUCTION & INDUSTRIAL		X P - INDUSTRIAL POWER	
PART NUMBER	PART NAME	NO. REQ'D.	REF. NO.	PART NUMBER	PART NAME	NO. REQ'D.	REF. NO.		
	BY-PASS FILTER								
159706	Filter, lubricating oil	1							
145664	Bracket, mounting	2	1						
70188	Capscrew, bracket	8	2						
70449	Capscrew, coupling half	2	3						
LF-750	Cartridge	1	4						
150038	Coupling half with nuts	1	5						
150039	Coupling half, cover	1	6						
159667	Cover	1	7						
70189	Lockwasher, bracket	8	8						
70194	Lockwasher, coupling half	2	9						
70299	Nut, bracket	8	10						
164159	"O" ring cover	1	11						
S-908	Plug, cover	1	12						
145665	Strap, mounting	2	13						
252057	Shell, filter	1	14						
157152	Decal, filter	1							
S-908	Plug, drain	1	15						
252138	Support, upper	1							
116029	"O" ring, support	1	16						
131911	Orifice, plug	1	17						
150037	Spring, hold down	1	18						
252055	Support, upper	1	19						

PARTS INDENTED ARE INCLUDED IN THE PART UNDER WHICH THEY ARE INDENTED



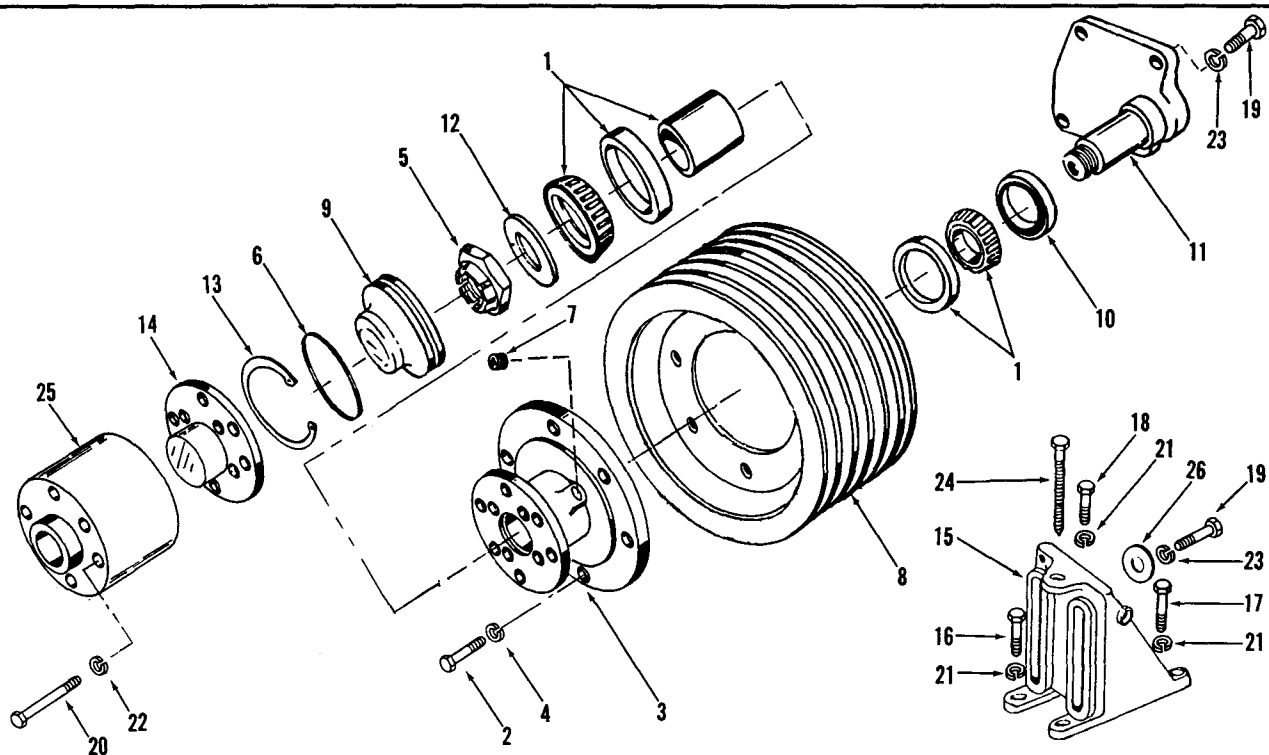
ENGINE APPLICATION		AUTOMOTIVE		B - OFF-HIGHWAY		C - CONSTRUCTION & INDUSTRIAL		P - INDUSTRIAL POWER	
PART NUMBER	PART NAME	NO. REQ'D.	REF. NO.	PART NUMBER	PART NAME	NO. REQ'D.	REF. NO.		
	WATER PUMP			170895	Seal, water pump	1	13		
	Auto Application			196967	Shaft	1	14		
AR-05664	Pump, water	1		200038	Seal, oil	1	15		
S-16002	Bearing, ball	1	1	200039	Seal, oil	1	16		
S-16067	Bearing, ball	1	2	200069	Sleeve, wear	1	17		
196960	Body, water pump	1	3	197581	Sheave, fixed half	1	20		
S-2268	Fitting, grease	1	4	197582	Sheave, adjusting half	1	21		
191175	Fitting, relief	1	5	203408	Spacer	2	22		
AR-06596	Impeller, water pump (201164)	1	6		MOUNTING PARTS				
200509	Seat, seal	1	7		All Applications				
S-915	Nipple, pipe	1	8	197583	Belt (C)	1			
S-911-B	Plug, pipe (1/8")	1	9	S-137	Capscrew (3/8"-16 x 2")	2	23		
S-995	Plug, pipe (3/4")	4	10	69047-A	Capscrew (3/8"-16 x 1 1/2")	2	24		
198786	Pulley, water pump	1	11	103023	Capscrew (7/16"-14 x 1")	2	25		
70183	Ring, retaining	1	12	196933	Connection	1	26		
170895	Seal, water pump	1	13	196964	Gasket	1	27		
196967	Shaft	1	14	189582	Gasket, water pump	1	28		
200038	Seal, oil	1	15	S-604	Lockwasher (3/8")	4	29		
200039	Seal, oil	1	16	S-610	Lockwasher (7/16")	2	30		
200069	Sleeve, wear	1	17						
	C Application								
AR-06305	Pump, water	1							
S-16002	Bearing, ball	1	1						
S-16067	Bearing, ball	1	2						
196960	Body, water pump	1	3						
S-172-B	Capscrew (3/8"-16 x 1 1/8")	2	18						
S-2268	Fitting, grease	1	4						
191175	Fitting, relief	1	5						
AR-06596	Impeller, water pump (201164)	1	6						
200509	Seat, seal	1	7						
S-604	Lockwasher (3/8")	2	19						
S-911-B	Plug, pipe (1/8")	1	9						
S-995	Plug, pipe (3/8")	4	10						
S-915-A	Plug, pipe (1/2")	1							
70183	Ring, retaining	1	12						

PARTS INDENTED ARE INCLUDED IN THE PART UNDER WHICH THEY ARE INDENTED



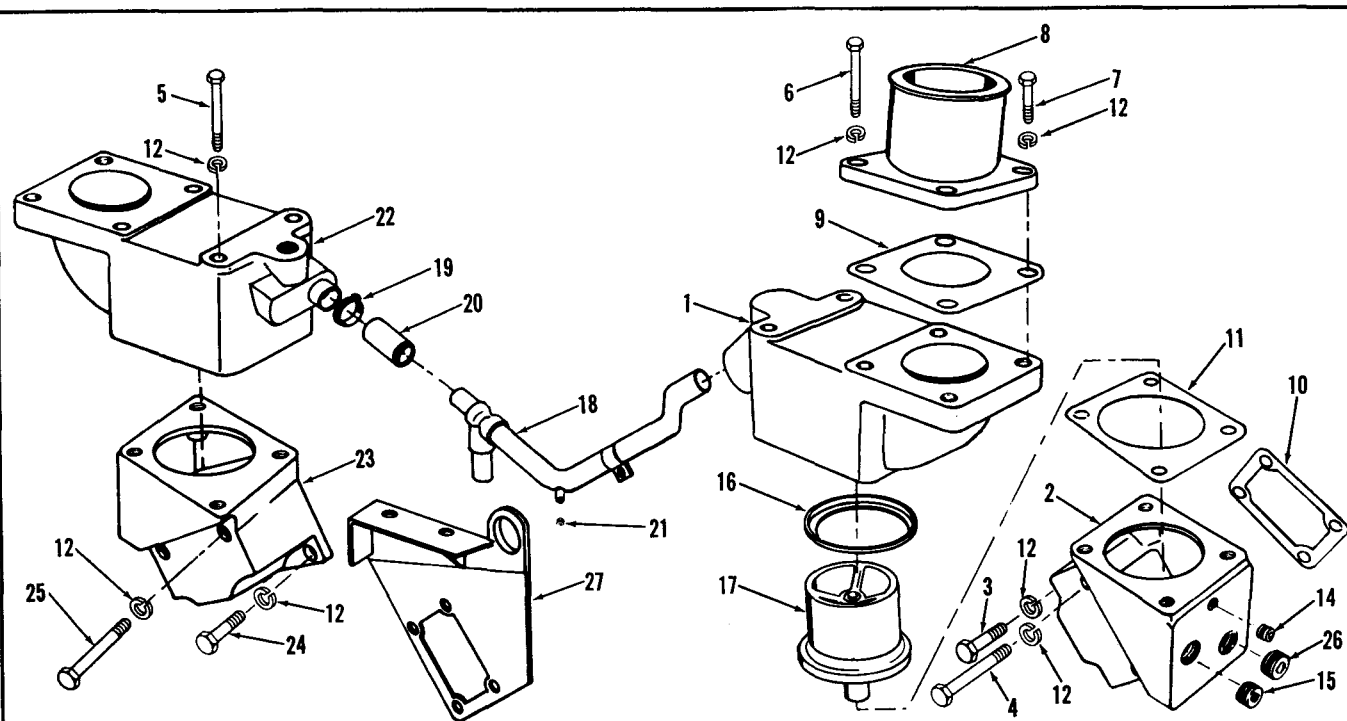
ENGINE APPLICATION	AUTOMOTIVE	X	B - OFF-HIGHWAY	C - CONSTRUCTION & INDUSTRIAL	P - INDUSTRIAL POWER		
PART NUMBER	PART NAME	NO. REQ'D.	REF. NO.	PART NUMBER	PART NAME	NO. REQ'D.	REF. NO.
	FAN HUB				MOUNTING PARTS		
AR-07505	Fan hub assembly (200313)	1		200008	Bracket, fan	1	10
200384	Bearing, roller	1	1	202051	Belt	3	
142176	Nut, hug lock	1	2	S-108-A	Capscrew (7/16"-20 x 1 3/4")	4	11
145551	"O" ring	1	3	S-183-A	Capscrew (7/16"-20 x 2 1/2")	1	20
S-911-B	Plug, pipe (1/8")	2	4	S-125	Capscrew (1/2"-13 x 2")	4	12
200314	Pulley, fan	1	5	108707	Capscrew (3/8"-16 x 1 1/2")	6	13
210996	Sight glass	1	6	108709	Capscrew (7/16"-20 x 1 1/2")	1	21
200307	Seal, oil	1	7	S-608	Lockwasher (1/2")	4	14
204537	Shaft, fan hub	1	8	S-610	Lockwasher (7/16")	6	15
146651	Washer, clamp	1	22	S-604	Lockwasher (3/8")	6	16
				62981	Screw, adjusting	1	17
				200315	Spacer, fan	1	18
				68050	Washer	4	19

PARTS INDENTED ARE INCLUDED IN THE PART UNDER WHICH THEY ARE INDENTED



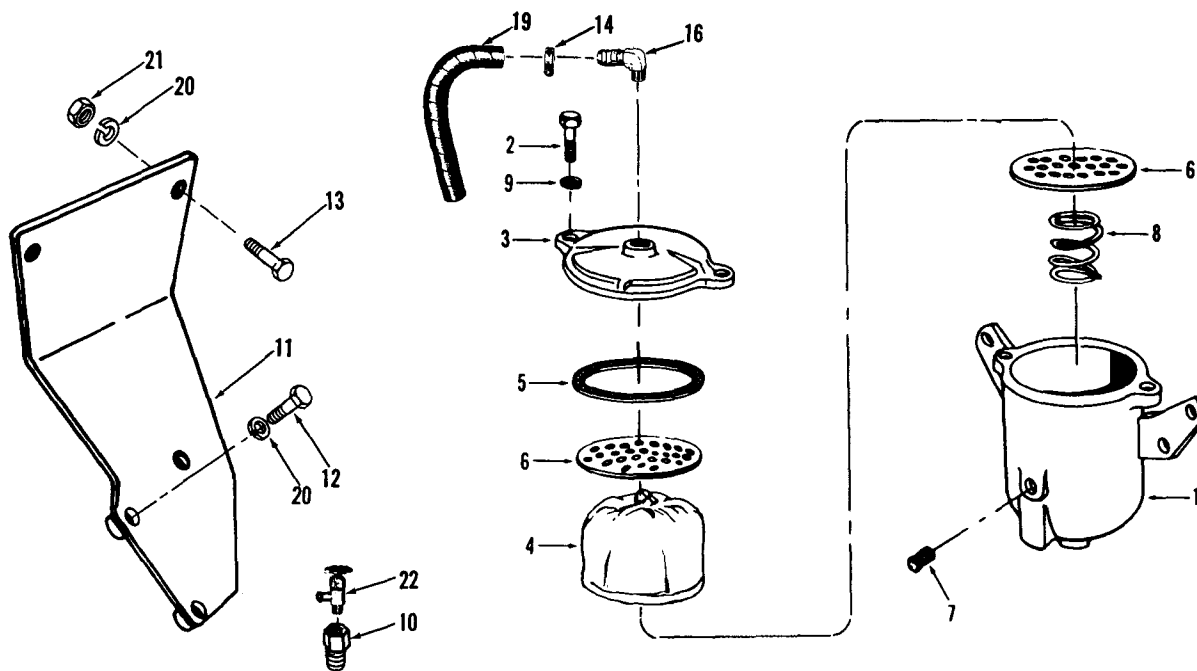
ENGINE APPLICATION		AUTOMOTIVE		B - OFF-HIGHWAY		C - CONSTRUCTION & INDUSTRIAL		X	P - INDUSTRIAL POWER	
PART NUMBER	PART NAME	NO. REQ'D.	REF. NO.	PART NUMBER	PART NAME	NO. REQ'D.	REF. NO.			
	FAN HUB				MOUNTING PARTS					
AR-09422	Fan hub assembly (210291)	1		200008	Bracket, fan	1	15			
200384	Bearing, roller	1	1	178499	Belt	3				
S-103-D	Capscrew (3/8"-16 x 1 1/4")	6	2	S-108-A	Capscrew (7/16"-20 x 1 3/4")	4	16			
204854	Hub, fan	1	3	S-183-A	Capscrew (7/16"-20 X 2 1/2")	1	17			
S-604	Lockwasher (3/8")	6	4	108709	Capscrew (7/16"-20 x 1 1/2")	1	18			
142176	Nut	1	5	S-125	Capscrew (1/2"-13 x 2")	4	19			
145551	"O" ring	1	6	108707	Capscrew (3/8"-16 x 1 1/2")	6	20			
208081	Pilot, fan hub	1	14	S-610	Lockwasher (7/16")	6	21			
S-911-B	Plug, pipe	2	7	S-604	Lockwasher (3/8")	6	22			
210290	Pulley	1	8	S-608	Lockwasher (1/2")	4	23			
200310	Retainer, "O" ring	1	9	9948-A	Screw, adjusting	1	24			
204864	Ring, retaining	1	13	159607	Spacer, fan	1	25			
200307	Seal, oil	1	10	68050	Washer, plain	4	26			
201620	Shaft	1	11							
146651	Washer, clamp	1	12							

PARTS INDENTED ARE INCLUDED IN THE PART UNDER WHICH THEY ARE INDENTED



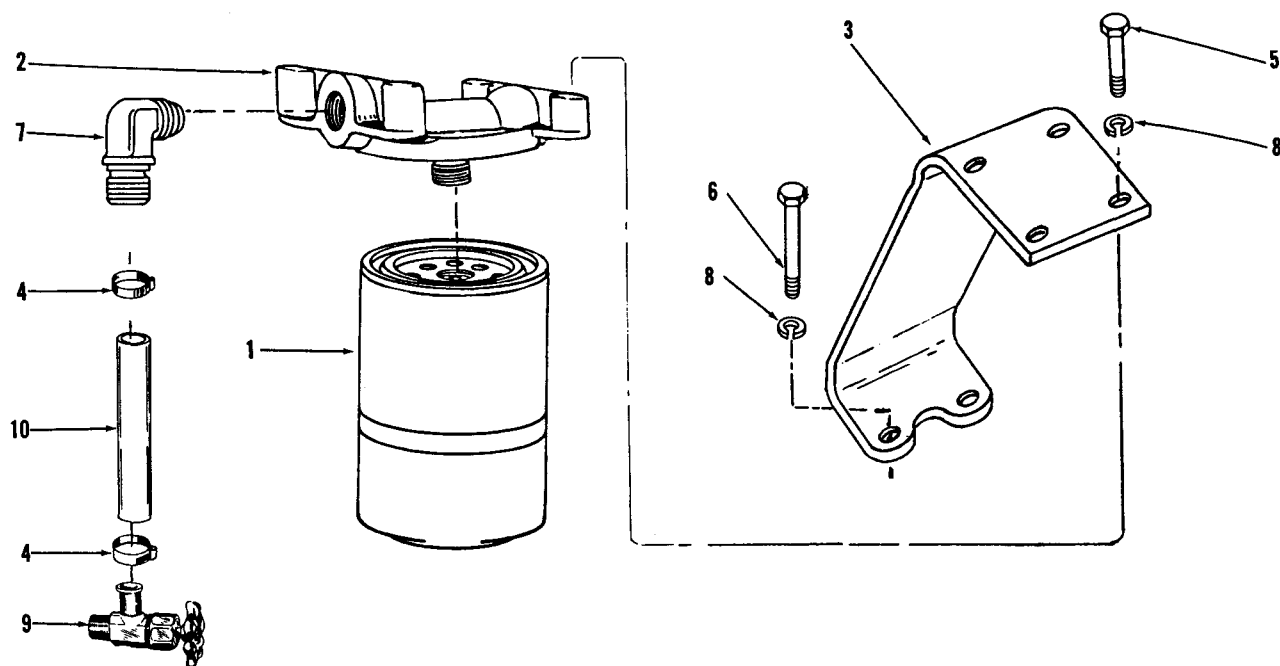
ENGINE APPLICATION		AUTOMOTIVE		X	B - OFF-HIGHWAY		C - CONSTRUCTION & INDUSTRIAL		X	P - INDUSTRIAL POWER	
PART NUMBER	PART NAME	NO. REQ'D.	REF. NO.	PART NUMBER	PART NAME	NO. REQ'D.	REF. NO.				
	THERMOSTAT HOUSING										
	LEFT BANK				RIGHT BANK						
196985	Housing, thermostat	1	1	196984	Housing, thermostat	1	22				
189551	Adapter, thermostat housing	1	2	189561	Adapter, thermostat housing	1	23				
S-103-D	Capscrew, adapter to cylinder head	2	3	S-120	Capscrew, adapter to cylinder head	2	24				
S-163	Capscrew, adapter to cylinder head	2	4	S-199-B	Capscrew, adapter to cylinder head	2	25				
S-163	Capscrew, housing to adapter	2	5	S-163	Capscrew, housing to adapter	2	5				
S-105	Capscrew, connection to housing	2	6	S-105	Capscrew, connection to housing	2	6				
S-112	Capscrew, connection to housing	2	7	S-112	Capscrew, connection to housing	2	7				
189559	Connection, water outlet	1	8	189559	Connection, water outlet	1	8				
189566	Gasket, connection	1	9	189566	Gasket, connection	1	9				
180381	Gasket, adapter to cylinder head	1	10	180381	Gasket, adapter to cylinder head	2	10				
189565	Gasket, adapter to housing	1	11	189565	Gasket, adapter to housing	1	11				
S-604	Lockwasher (3/8")	10	12	S-604	Lockwasher (3/8")	10	12				
S-915-A	Plug, pipe (adapter) (1/2")	3		S-908	Plug, pipe (adapter) (3/8")	2					
S-911-B	Plug, pipe (adapter) (1/8")	1	14	S-995	Plug, pipe (adapter) (3/4")	1	26				
186780	Seal, thermostat	1	16	S-911-B	Plug, pipe (adapter) (1/8")	1	14				
135675	Thermostat	1	17	186780	Seal, thermostat	1	16				
AR-01815	Connection, water by-pass tube	1	18	135675	Thermostat	1	17				
43828-B	Clamp, hose	6	19	200272	Bracket, engine lifting (Auto Application)	1	27				
G1554	Hose, to housing	2	20		Bracket, engine lifting (C Application)	1	27				
190229	Hose, to water pump	1		193065							
S-965-E	Plug, pipe	1	21								

PARTS INDENTED ARE INCLUDED IN THE PART UNDER WHICH THEY ARE INDENTED



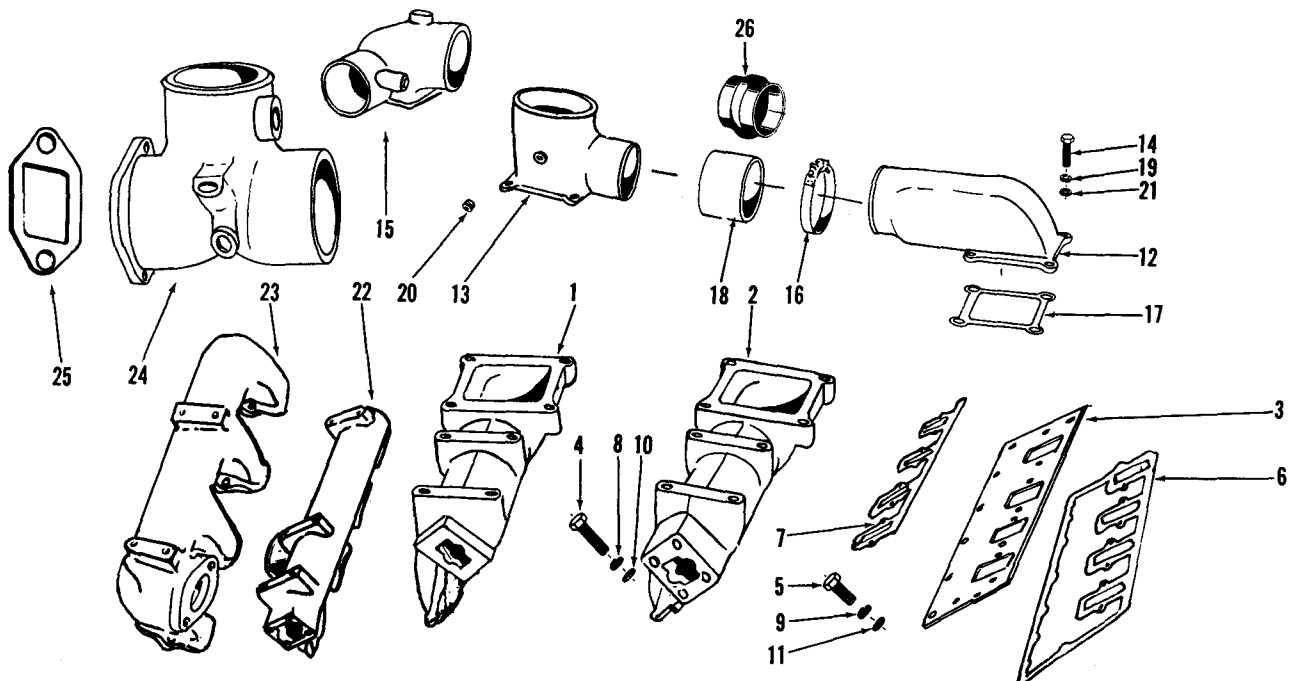
ENGINE APPLICATION		AUTOMOTIVE		B - OFF-HIGHWAY		C - CONSTRUCTION & INDUSTRIAL		X		P - INDUSTRIAL POWER	
PART NUMBER	PART NAME	NO. REQ'D.	REF. NO.	PART NUMBER	PART NAME	NO. REQ'D.	REF. NO.				
	CORROSION RESISTOR				MOUNTING PARTS						
132716	Resistor, corrosion	1		180221	Adapter, coupling	1	10				
132717	Body	1	1	162278	Bracket, mounting	1	11				
70223	Capscrew, cover to body	2	2	S-119	Capscrew (5/16''-18 x 1 1/4'')	3	12				
132718	Cover	1	3	S-111	Capscrew (5/16''-18 x 1 1/2'')	2	13				
132732	Element (WF-1001)	1	4	179904	Clamp, hose	4	14				
132730	Gasket, cover	1	5	69911-A	Clamp, hose	1					
132719	Plate	2	6	152767	Clip, tube	1					
139090	Plug, drain	1	7	179903	Connector, elbow	2	16				
132731	Spring, filter	1	8	135970	Decal, corrosion resistor	1					
70233	Washer	2	9	179909	Hose	1					
				179926	Hose	1	19				
				S-605	Lockwasher (5/16'')	5	20				
				S-221	Nut	2	21				
				179901	Valve, shut off	2	22				
		1									
		1									

PARTS INDENTED ARE INCLUDED IN THE PART UNDER WHICH THEY ARE INDENTED



ENGINE APPLICATION		AUTOMOTIVE		X	B - OFF-HIGHWAY		C - CONSTRUCTION & INDUSTRIAL		P - INDUSTRIAL POWER	
PART NUMBER	PART NAME	NO. REQ'D.	REF. NO.	PART NUMBER	PART NAME	NO. REQ'D.	REF. NO.			
	CORROSION RESISTOR				MOUNTING PARTS					
209606	Resistor, corrosion assembly	1		208928	Bracket	1	3			
209604	Resistor, corrosion	1	1	179904	Clamp, hose	4	4			
204163	Head	1	2	S-103-D	Capscrew (3/8"-16 x 1 1/4")	4	5			
				108707	Capscrew (3/8"-16 x 1 1/2")	2	6			
				210873	Decal	1				
				179903	Elbow	2	7			
				179922	Hose	1	10			
				179925	Hose	1	10			
				S-604	Lockwasher	6	8			
				179901	Valve, water shut-off	2	9			

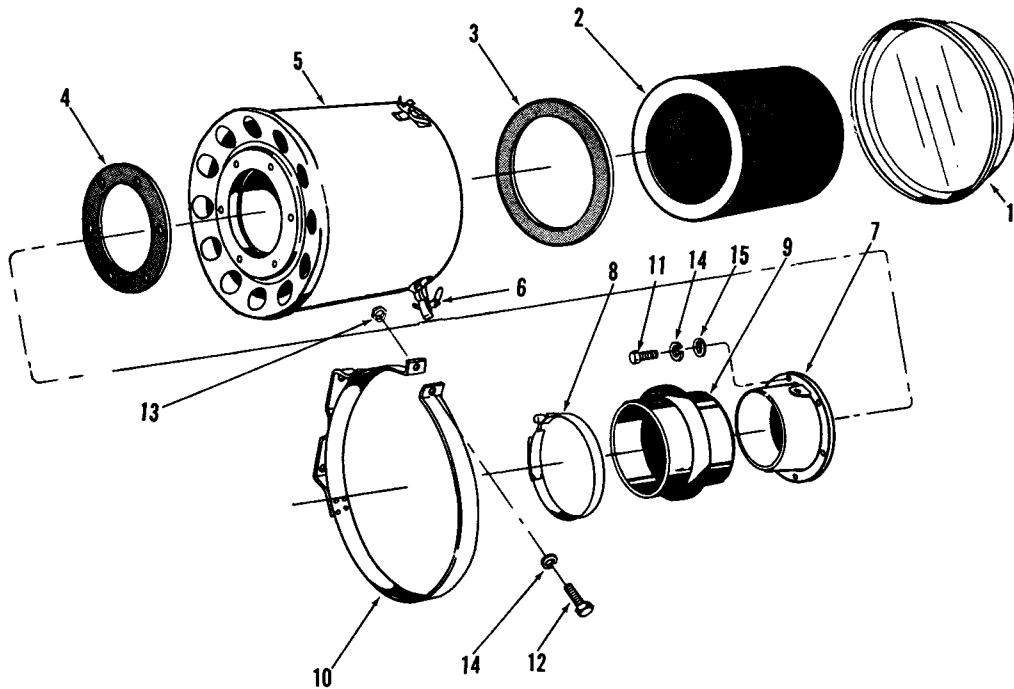
PARTS INDENTED ARE INCLUDED IN THE PART UNDER WHICH THEY ARE INDENTED



ENGINE APPLICATION AUTOMOTIVE X B - OFF-HIGHWAY C - CONSTRUCTION & INDUSTRIAL X P - INDUSTRIAL POWER

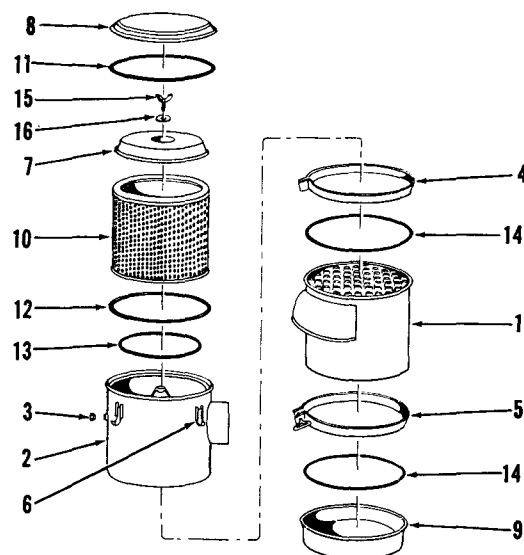
PART NUMBER	PART NAME	NO. REQ'D.	REF. NO.	PART NUMBER	PART NAME	NO. REQ'D.	REF. NO.
INTAKE MANIFOLD AND CONNECTION				ADD:			
Auto Application				156436	Manifold, intake	1	1
156436	Manifold, intake (L.B.)	1	1	156352	Connection	1	15
170773	Manifold, intake (R.B.)	1	2	S-105	Capscrew (3/8"-16 x 3 1/2")	1	
154226	Cover, push tube	2	3	VT-903			
S-103-D	Capscrew, manifold to cover (3/8"-16 x 1 1/4")	10	4	191108	Manifold, intake (L.B.)	1	22
S-107	Capscrew, cover to head (5/16"-18 x 3/4")	21	5	191107	Manifold, intake (R.B.)	1	23
151707	Gasket, cover	2	6	154226	Cover, push tube	2	3
154396	Gasket, intake manifold	2	7	S-174-B	Capscrew (3/8"-16 x 1 3/8")	16	14
S-604	Lockwasher (3/8")	16	8	S-107	Capscrew (5/16"-18 x 3/4")	26	5
S-605	Lockwasher (5/16")	26	9	151707	Gasket, cover	2	6
S-602	Washer, plain (13/32")	10	10	154396	Gasket, intake manifold	2	7
S-626	Washer, plain (11/32")	24	11	S-602	Washer, plain (13/32")	16	10
156350	Connection, air crossover	1	12	S-626	Washer, plain (11/32")	26	11
156808	Connection, air intake	1	13	208437	Connection, air intake	1	24
S-174-B	Capscrew, connection (3/8"-16 x 1 3/8")	8	14	S-174-B	Capscrew (3/8"-16 x 1 3/8")	2	14
125740	Clamp, hose	2	16	208326	Clamp, hose	4	16
156348	Gasket, air connection	2	17	191116	Gasket, air connection	1	25
64015	Hose, connection	1	18	202994	Hose, turbocharger air connection	1	18
S-604	Lockwasher, connection (3/8")	8	19	208491	Hose, turbocharger air connection	1	26
S-911-B	Plug, pipe (1/8")	2	20	S-602	Washer, plain (13/32")	2	21
S-602	Washer, plain (13/32")	8	21	S-604	Lockwasher (3/8")	2	19
C Application							
Same as Auto Application except:							
OMIT:							
170773	Manifold, intake	1	2				
156808	Connection	1	13				
S-174-B	Capscrew (3/8"-16 x 1 3/8")	1	14				

PARTS INDENTED ARE INCLUDED IN THE PART UNDER WHICH THEY ARE INDENTED



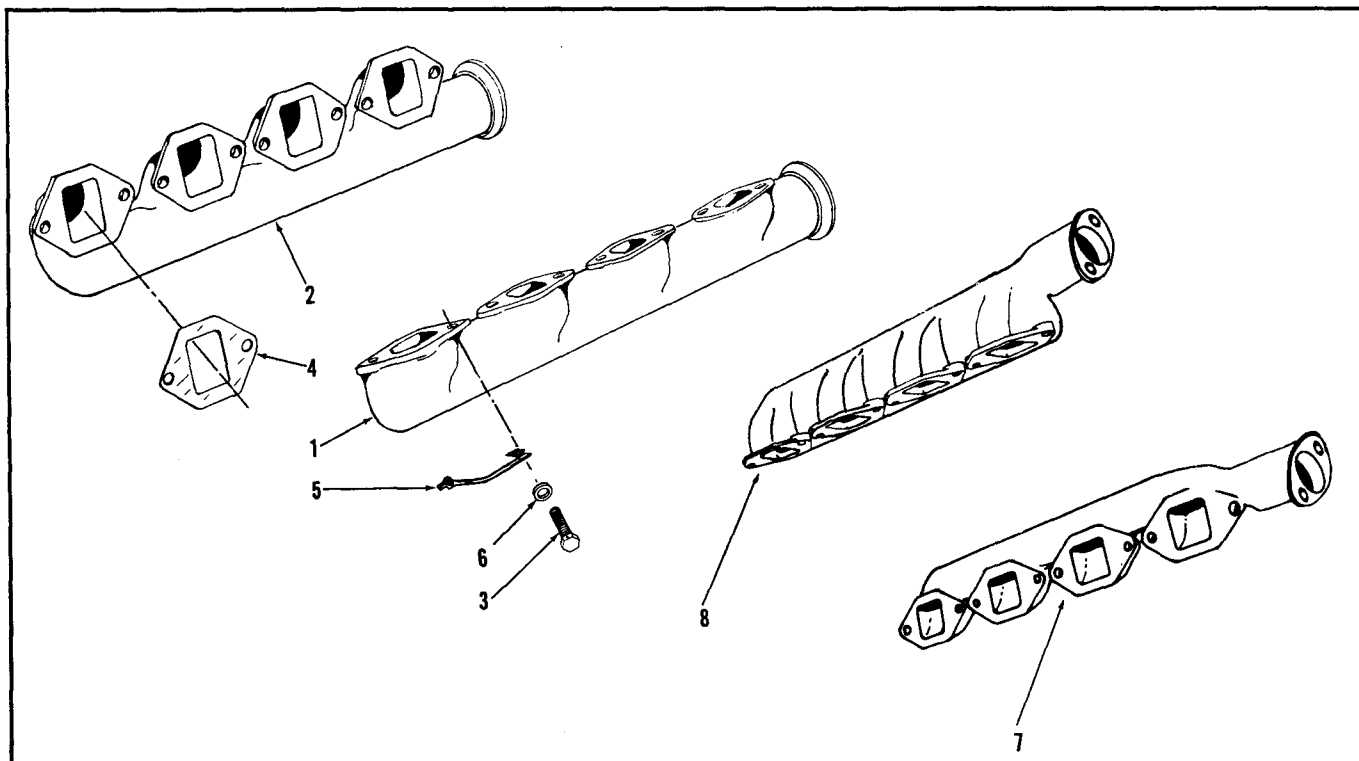
ENGINE APPLICATION		AUTOMOTIVE		X	B - OFF-HIGHWAY		C - CONSTRUCTION & INDUSTRIAL		P - INDUSTRIAL POWER	
PART NUMBER	PART NAME	NO. REQ'D.	REF. NO.	PART NUMBER		PART NAME	NO. REQ'D.	REF. NO.		
	AIR CLEANER									
106833	Cleaner, air (12" diameter)	1								
107135	Cover, shell	1	1							
AF-253	Element, filter	1	2							
107136	Gasket, element	1	3							
107137	Gasket, flange	1	4							
107134	Shell, air cleaner	1	5							
122121	Spring, clip	3	6							
106126	Adapter	1	7							
125741	Clamp, hose	4	8							
103808	Hose, flexible	2	9							
105916	Strap	2	10							
S-115	Capscrew (5/16"-18 x 7/8")	6	11							
S-111	Capscrew (5/16"-18 x 1 1/2")	2	12							
S-221	Nut (5/16")	2	13							
S-605	Lockwasher (5/16")	8	14							
S-626	Washer, plain	6	15							

PARTS INDENTED ARE INCLUDED IN THE PART UNDER WHICH THEY ARE INDENTED



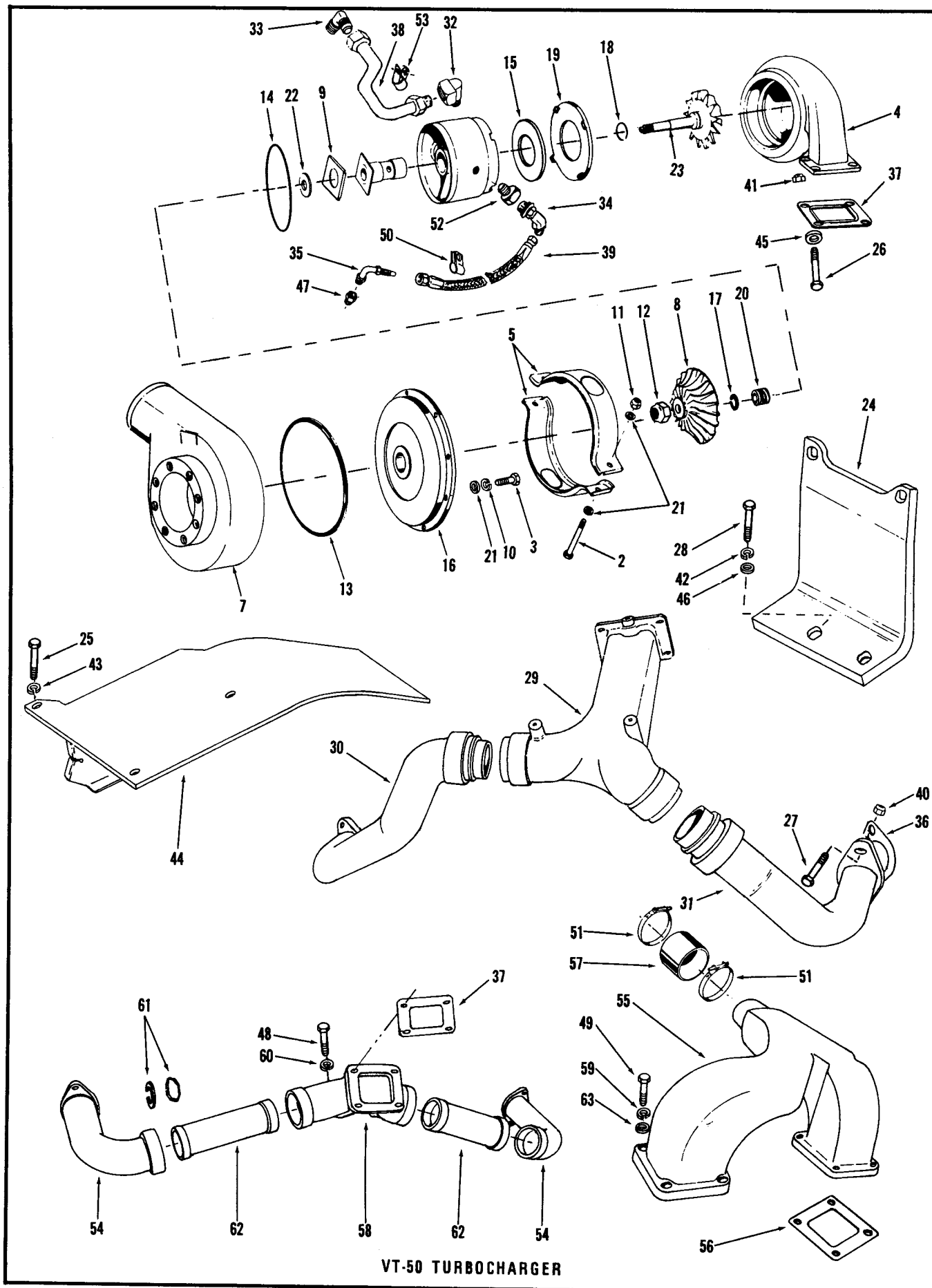
ENGINE APPLICATION		AUTOMOTIVE		B - OFF-HIGHWAY		C - CONSTRUCTION & INDUSTRIAL		X P - INDUSTRIAL POWER	
PART NUMBER	PART NAME	NO. REQ'D.	REF. NO.	PART NUMBER	PART NAME	NO. REQ'D.	REF. NO.		
	AIR CLEANER				MOUNTING PARTS				
151609	Cleaner, air	1		S-111	Capscrew (5/16"-18 x 1 1/2")	2			
151801	Body, lower	1	1	125741	Clamp, "T" bolt	4			
150759	Body, upper	1	2	103808	Hose	2			
150768	Cap, restriction	1	3	S-605	Lockwasher (5/16")	2			
150763	Clamp, body	1	4	S-221	Nut (5/16"-18)	2			
150771	Clamp, cup	1	5	197220	Strap	2			
150767	Clip, cover	1	6						
150757	Cover inner	1	7						
133757	Cover assembly	1	8						
150772	Cup assembly	1	9						
150756	Element	1	10						
150747	Gasket, cover	1	11						
150758	Gasket, inner cover	1	12						
150766	Gasket, element	1	13						
133763	Gasket, body and cup	2	14						
152792	Screw	1	15						
152793	Washer	1	16						

PARTS INDENTED ARE INCLUDED IN THE PART UNDER WHICH THEY ARE INDENTED



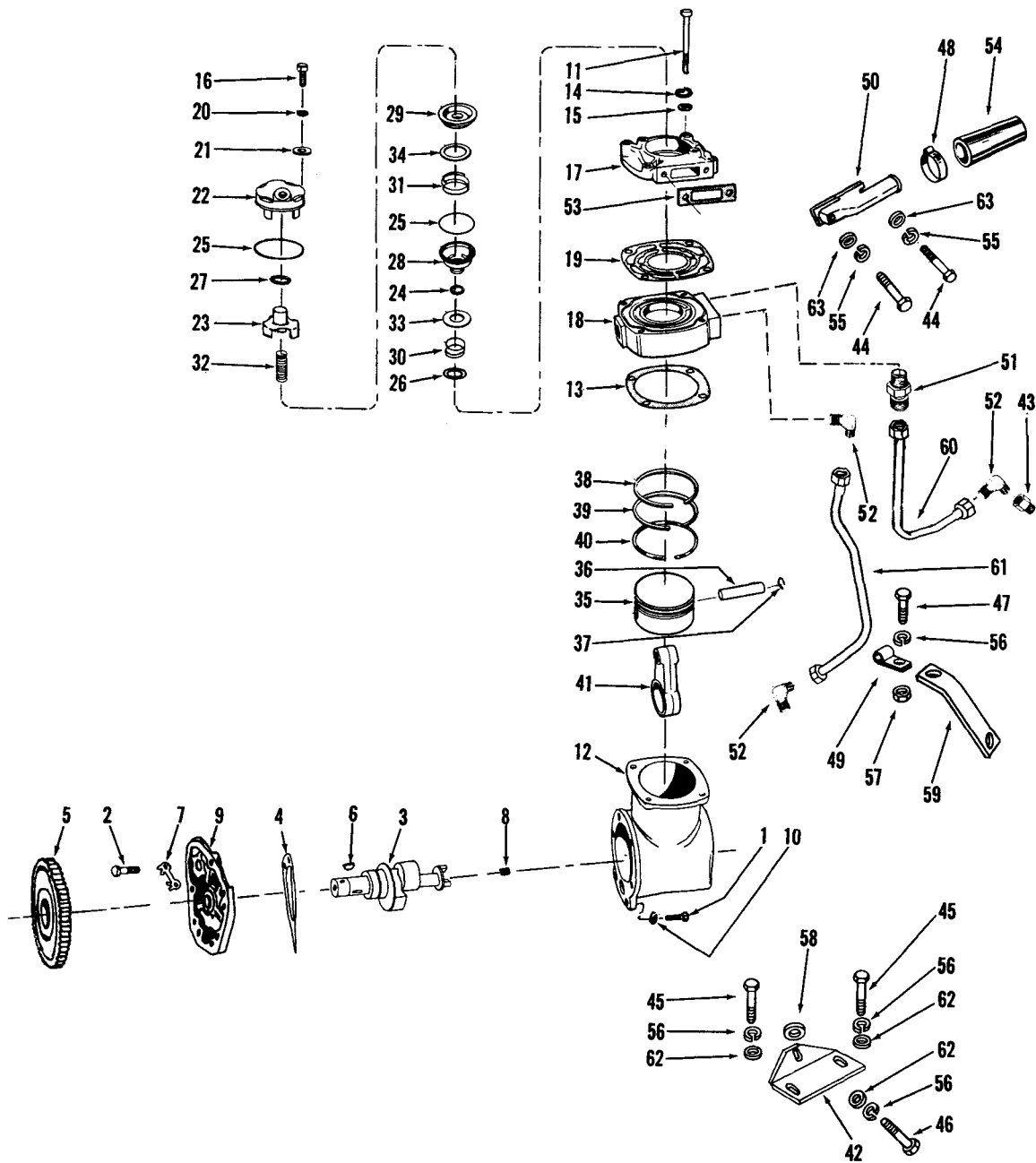
ENGINE APPLICATION		AUTOMOTIVE		B - OFF-HIGHWAY		C - CONSTRUCTION & INDUSTRIAL		P - INDUSTRIAL POWER	
PART NUMBER	PART NAME	NO. REQ'D.	REF. NO.	PART NUMBER	PART NAME	NO. REQ'D.	REF. NO.		
EXHAUST MANIFOLD									
183299	Manifold, exhaust (R.B.)	1	1						
183298	Manifold, exhaust (L.B.)	1	2						
185804	Capscrew (7/16"-14 x 1 3/8")	16	3						
169864	Gasket, manifold	8	4						
195712	Lockplate, capscrew	8	5						
109594	Washer, plain	16	6						
VT-903									
190847	Manifold, exhaust (L.B.)	1	7						
190846	Manifold, exhaust (R.B.)	1	8						
MOUNTING PARTS									
Same as above.									

PARTS INDENTED ARE INCLUDED IN THE PART UNDER WHICH THEY ARE INDENTED



ENGINE APPLICATION		AUTOMOTIVE		X B - OFF-HIGHWAY		C - CONSTRUCTION & INDUSTRIAL		P - INDUSTRIAL POWER	
PART NUMBER	PART NAME	NO. REQ'D.	REF. NO.	PART NUMBER	PART NAME	NO. REQ'D.	REF. NO.		
	VT-50 TURBOCHARGER				MOUNTING PARTS				
AR-09420	Turbocharger assembly (210892)	1			TOP MOUNT				
156420	Bearing	1	1						
194010	Capscrew, clamp	2	2	208438	Bracket	1	24		
S-118-A	Capscrew (1/4"-20 x 5/8")	8	3	S-110	Capscrew	3	25		
202506	Casing, turbine	1	4	113226	Capscrew	2	26		
156416	Clamp, "V" band	2	5	117197	Capscrew	4	27		
202376	Housing, braring	1	6	S-172-B	Capscrew, (3/8"-16 x 1 3/8")	2	28		
204841	Housing, compressor	1	7	112217	Capscrew	2	26		
191489	Impeller	1	8	190858	Collector, exhaust	1	29		
170510	Insert, bearing	1	9	208426	Connection, exhaust manifold (L.B.)	1	30		
S-600	Lockwasher (1/4")	8	10	208427	Connection, exhaust manifold (R.B.)	1	31		
128936	Nameplate	1		199893	Elbow, oil drain	1	32		
167299	Nut, clamp	2	11	S-1064	Elbow	1	33		
S-222-A	Nut	1	12	S-1040-A	Elbow	1	34		
202383	"O" ring	1	13	196209	Fitting, half union female	1	35		
202457	"O" ring	1	14	190848	Gasket, connection	2	36		
202377	Packing, insulation	1	15	190849	Gasket, collector	1	37		
203296	Plate, diffuser	1	16	210581	Hose, oil drain	1	38		
S-2286	Screw, nameplate	4		209958	Hose, oil supply	1	39		
156444	Seal, piston ring	1	17	102950	Locknut	4	40		
195840	Seal, ring	1	18	107440	Locknut	4	41		
171570	Shield, heat	1	19	S-604	Lockwasher (3/8")	2	42		
202375	Sleeve	1	20	S-605	Lockwasher (5/16")	3	43		
S-631	Washer, plain (9/32")	4	21	191254	Shield, heat	1	44		
169493	Washer, thrust	1	22	69630	Washer	2	45		
AR-06665	Wheel and shaft	1	23	S-602	Washer, plain (13/32")	2	46		
					MOUNTING PARTS				
					REAR MOUNT				
				S-967	Bushing, pipe	1	47		
				112217	Capscrew	2	26		
				113226	Capscrew	2	26		
				S-125	Capscrew (1/2"-13 x 2")	3	48		
				117197	Capscrew	4	27		
				S-120	Capscrew (3/8"-16 x 1 3/4")	8	49		
				68425	Clip, hose	1	50		
				135144	Clamp	2	51		
				203955	Connector, tube	1	52		
				196206	Clip, tube	1	53		
				209612	Connection, exhaust manifold	2	54		
				209659	Crossover, air intake	1	55		
				199893	Elbow, oil drain	1	32		
				S-1064	Elbow	1	33		
				S-1040-A	Elbow	1	34		
				196209	Fitting, half union female	1	35		
				190848	Gasket, manifold	2	36		
				190849	Gasket	1	37		
				156348	Gasket, crossover	2	56		
				202994	Hose, air connection	1	57		
				210546	Hose, oil drain	1	38		
				209958	Hose, oil supply	1	39		
				209637	Housing, exhaust collector	1	58		
				S-604	Lockwasher (3/8")	8	59		
				107440	Locknut	4	41		
				102950	Locknut	4	40		
				S-608	Lockwasher (1/2")	3	60		
				209663	Seal, exhaust manifold	4	61		
				209616	Tube, exhaust	2	62		
				S-602	Washer, plain	8	63		

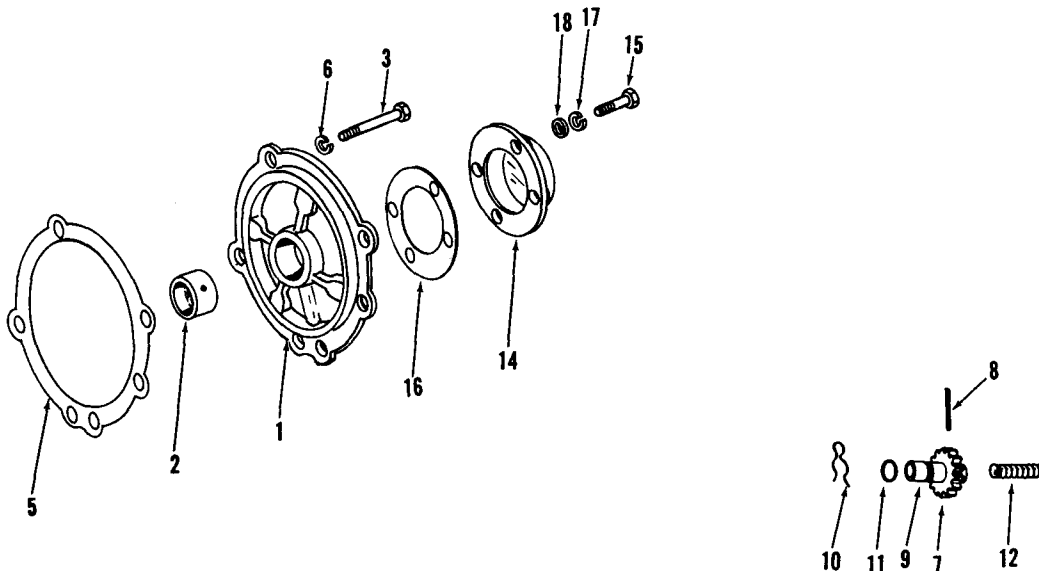
PARTS INDENTED ARE INCLUDED IN THE PART UNDER WHICH THEY ARE INDENTED



CUMMINS COMPACT AIR COMPRESSOR

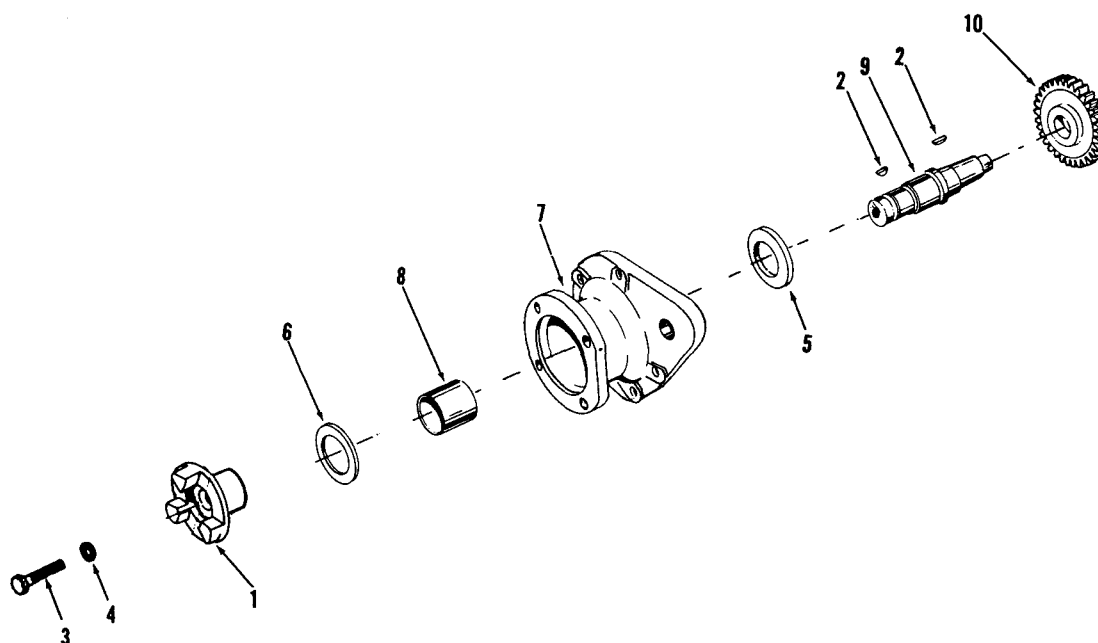
ENGINE APPLICATION		AUTOMOTIVE		X	B - OFF-HIGHWAY		C - CONSTRUCTION & INDUSTRIAL		P - INDUSTRIAL POWER	
PART NUMBER	PART NAME	NO. REQ'D.	REF. NO.	PART NUMBER	PART NAME	NO. REQ'D.	REF. NO.			
	AIR COMPRESSOR				MOUNTING PARTS					
AR-09413	Compressor, air	1		190839	Bracket, support	1	42			
164881	Capscrew, nylok	2	1	S-921-D	Bushing, pipe	1	43			
108707	Capscrew, support to housing	4	2	S-111	Capscrew (5/16''-18 x 1 1/2'')	2	44			
202770	Crankshaft	1	3	S-109	Capscrew (3/8''-16 x 7/8'')	2	45			
176027	Gasket, support to housing	1	4	108707	Capscrew (3/8''-16 x 1 1/2'')	1	46			
202644	Gear, drive	1	5	S-117	Capscrew (3/8''-16 x 3/4'')	1	47			
183695	Key, crankshaft	1	6	210753	Clamp, hose	2	48			
176059	Lockplate	2	7	108722	Clamp, hose	1	49			
S-965-E	Plug, pipe	1	8	208489	Connector, air	1	50			
202640	Support, compressor	1	9	S-1002-A	Connector, flexible tube	1	51			
S-602	Washer, plain	2	10	S-1005-A	Elbow	3	52			
AR-03928	Crankcase, compressor	1		157911	Gasket, connection	1	53			
S-155-A	Capscrew	4	11	177217	Hose	1	54			
BM-98685	Crankcase, compressor (176025)	1	12	S-605	Lockwasher (5/16'')	2	55			
147610	Bushing, crankcase	1		S-604	Lockwasher (3/8'')	4	56			
154018	Gasket, head to crankcase	1	13	S-223	Nut	1	57			
S-605	Lockwasher	4	14	108518	Spacer	1	58			
136403	Nameplate, serial number	1		109489	Support, tube	1	59			
160047	Nameplate, compressor	1		182578	Tube, water inlet	1	60			
S-2286	Screw	6		208880	Tube, water outlet	1	61			
S-626	Washer, plain	4	15	S-602	Washer, plain (13/32'')	3	62			
AR-03926	Head, compressor	1		S-626	Washer Plain (11/32'')	2	63			
S-115	Capscrew (5/16''-18 x 3/4'')	2	16	169992	Gasket, accessory mounting	1				
153964	Cover	1	17							
179122	Head	1	18							
154996	Gasket, cover to head	1	19							
S-605	Lockwasher (5/16'')	2	20							
109557	Washer, plain	2	21							
AR-04154	Valve, assembly	1								
153966	Body, unloader valve	1	22							
191037	Cap, unloader	1	23							
128085	"O" ring, exhaust valve	1	24							
128086	"O" ring, intake and unloader valve	2	25							
183429	Plate, wear	1	26							
127936	Seal, unloader cap	1	27							
144714	Seat, exhaust valve	1	28							
145028	Seat, intake valve	1	29							
128080	Spring, exhaust valve	1	30							
190334	Spring, intake valve	1	31							
150631	Spring, unloader valve	1	32							
127940	Valve, exhaust	1	33							
144948	Valve, intake	1	34							
BM-77410	Piston assembly	1								
165430	Piston	1	35							
119810	Pin, piston	1	36							
119859	Ring, snap	2	37							
AR-04130	Ring set, piston	1								
194810	Ring, compression	1	38							
187350	Ring, compression	1	39							
180810	Ring, oil control	1	40							
176023	Rod, connecting	1	41							

PARTS INDENTED ARE INCLUDED IN THE PART UNDER WHICH THEY ARE INDENTED



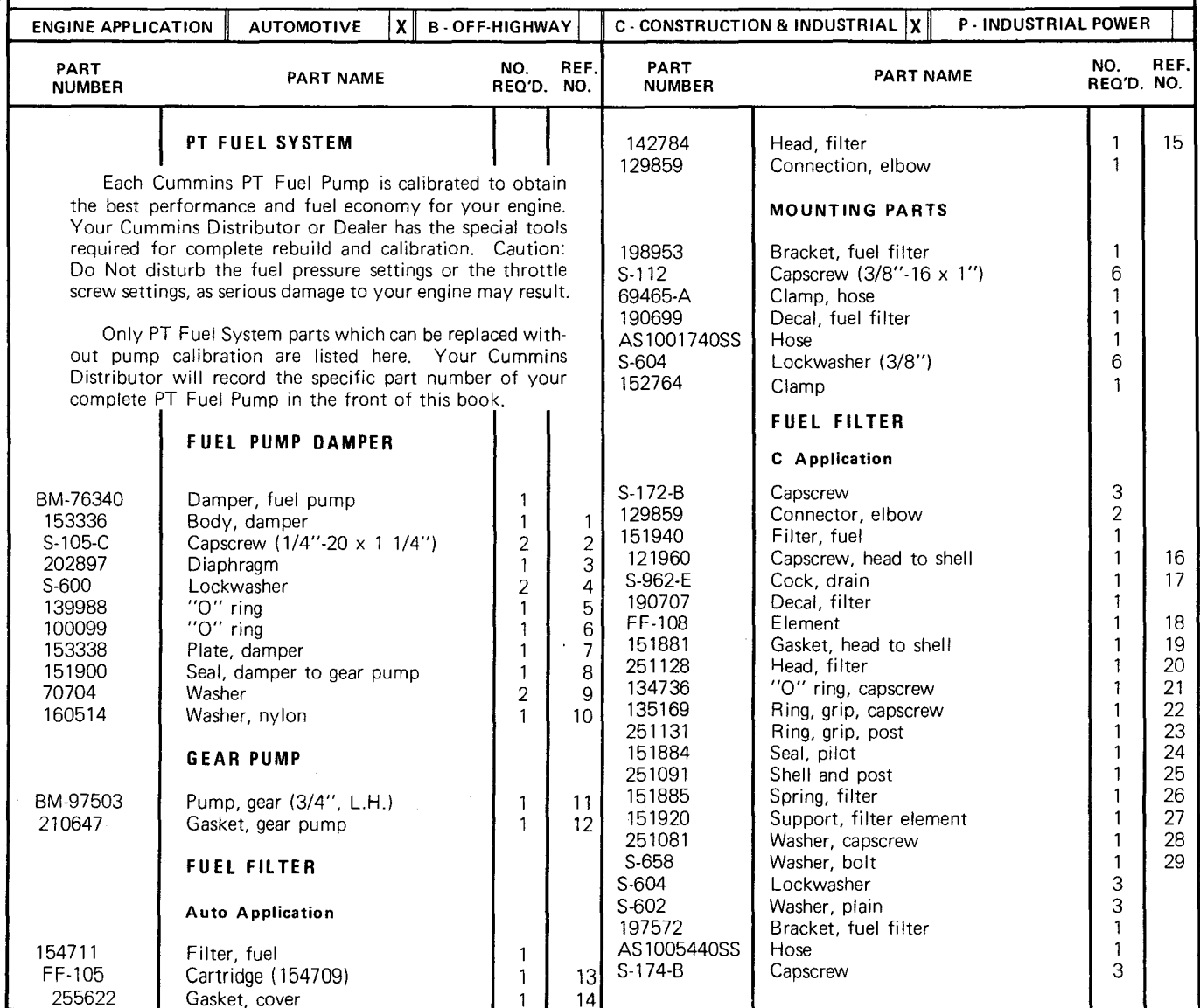
ENGINE APPLICATION		AUTOMOTIVE		B - OFF-HIGHWAY		C - CONSTRUCTION & INDUSTRIAL		P - INDUSTRIAL POWER	
				X				X	
PART NUMBER	PART NAME	NO. REQ'D.	REF. NO.	PART NUMBER	PART NAME	NO. REQ'D.	REF. NO.		
REAR BEARING SUPPORT									
AR-09278	Support and bushing compressor (202429)	1	1						
132770	Bushing, air compressor support	1	2						
S-105	Capscrew (3/8"-16 x 3 1/2")	5	3						
169992	Gasket, air compressor support	1							
169843	Gasket, bearing support	1	5						
S-604	Lockwasher (3/8")	5	6						
S-965-E	Plug, pipe (1/16")	1							
BARRING MECHANISM									
AR-09285	Shaft and gear, barring								
202645	Gear	1	7						
198721	Pin	1	8						
176035	Shaft	1	9						
169834	Clip, external cotter	1	10						
102827	"O" ring	1	11						
169835	Spring	1	12						
REAR SUPPORT COVER									
154915	Cover, bearing support	1	14						
S-103-D	Capscrew (3/8"-16 x 1 1/4")	4	15						
156819	Gasket	1	16						
S-604	Lockwasher (3/8")	4	17						
S-602	Washer, plain (13/32")	4	18						

PARTS INDENTED ARE INCLUDED IN THE PART UNDER WHICH THEY ARE INDENTED

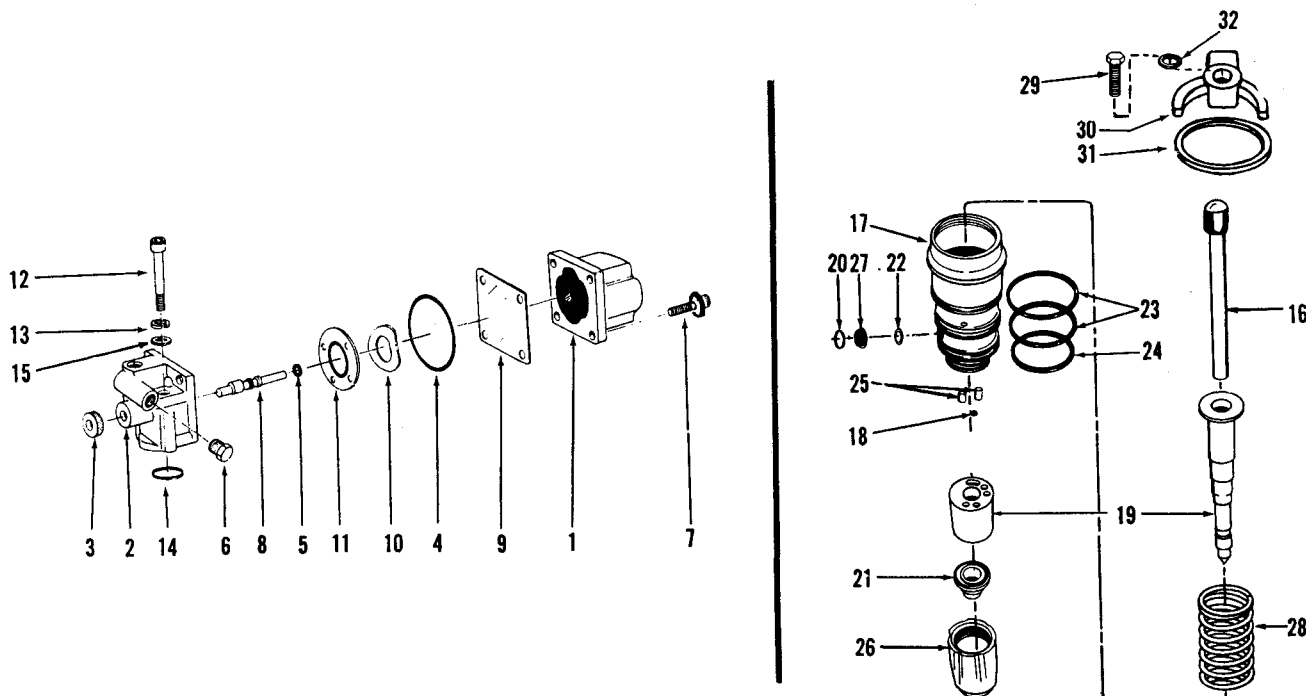


ENGINE APPLICATION		AUTOMOTIVE		B - OFF-HIGHWAY		C - CONSTRUCTION & INDUSTRIAL		X	P - INDUSTRIAL POWER	
PART NUMBER	PART NAME	NO. REQ'D.	REF. NO.	PART NUMBER	PART NAME	NO. REQ'D.	REF. NO.			
	FUEL PUMP DRIVE									
AR-09282	Drive, fuel pump	1								
158826	Coupling, drive	1	1							
S-316	Key	1	2							
129510	Capscrew	1	3							
170664	Washer, plain	1	4							
116388	Washer, thrust	1	5							
116389	Washer, thrust	1	6							
AR-09281	Support and bushing (202767)	1	7							
116391	Bushing, drive	1	8							
202418	Shaft, drive	1	9							
202644	Gear, drive	1	10							
S-316	Key	1	2							

PARTS INDENTED ARE INCLUDED IN THE PART UNDER WHICH THEY ARE INDENTED



34



ENGINE APPLICATION		AUTOMOTIVE		X	B - OFF-HIGHWAY		C - CONSTRUCTION & INDUSTRIAL		X	P - INDUSTRIAL POWER					
PART NUMBER		PART NAME		NO. REQ'D.		REF. NO.		PART NUMBER		PART NAME		NO. REQ'D.		REF. NO.	
		SHUTDOWN VALVE						187229 *		Coupling		8			
		Auto Application						189848 *		Plug		32			
								185160 *		Plunger		8		19	
BM-69973	Valve, shutdown (12V, 1 pole)	1						174299		Clip, filter screen		8		20	
134072	Coil assembly	1	1					194824		Cup		8		21	
129826	Housing, valve	1	2					173086		Gasket, orifice plug		8		22	
129838	Knob, override	1	3					193736		"O" ring, adapter		16		23	
129888	"O" ring, coil to housing	1	4					101754		"O" ring, adapter		8		24	
190876	"O" ring, shaft	1	5					203426		Pin, spirol		16		25	
70295	Plug, pipe	1	6					185138		Retainer, cup		8		26	
187556	Sem fillister washer head	4	7					174298		Screen		8		27	
196037	Shaft, override	1	8					166009		Spring		8		28	
129839	Shield, fuel	1	9							MOUNTING PARTS					
129768	Spring	1	10												
129827	Valve	1	11					131430		Capscrew		8		29	
S-189-C	Capscrew	2	12					180098		Clamp		8		30	
181466	Lockwasher	2	13					180626		Spacer		8		31	
154087	"O" ring	1	14					203518		Washer		8		32	
67684	Washer	2	15							VT-903					
		C Application								Same as above except:					
		Same as Auto Application except:						OMIT:							
AR-05535	Valve, shutdown (24V, 1 pole)	1													
134074	Coil assembly	1						AR-40033		Injector		8			
		INJECTOR						AR-40102		Injector, less link		8			
		V-903						AR-40064		Barrel and plunger		8			
								ADD:							
AR-40033	Injector	8						AR-40162		Injector		8			
191917	Link, injector	8	16					AR-40026		Barrel and plunger		8			
AR-40102	Injector, less link	8													
185139	Adapter	8	17												
AR-40064	Barrel and plunger	8													
167157	Ball, check	8	18												
187370 *	Barrel	8	19												

PARTS INDENTED ARE INCLUDED IN THE PART UNDER WHICH THEY ARE INDENTED

ENGINE APPLICATION		AUTOMOTIVE	X	B - OFF-HIGHWAY	C - CONSTRUCTION & INDUSTRIAL	X	P - INDUSTRIAL POWER
PART NUMBER	PART NAME	NO. REQ'D.	REF. NO.	PART NUMBER	PART NAME	NO. REQ'D.	REF. NO.
ELECTRICAL EQUIPMENT							
<p>Electrical equipment is not manufactured by the Cummins Engine Company, Inc. Complete service for electrical equipment may be obtained from the manufacturers: The Delco-Remy Company at Anderson, Indiana; The Leece-Neville Company at Cleveland, Ohio; or from their service stations. Address of nearest service station may be obtained from the manufacturer.</p>							
Auto Application							
210127	Alternator, 12 Volt	1		187317	Adapter	1	
204257	Bracket, alternator	1		S-955	Bushing, pipe	1	
204463	Bracket, alternator adjusting	1		S-102	Capscrew (5/16"-18 x 1")	2	
178485	Belt, "V"	2		180371	Clip, tube	6	
S-103-D	Capscrew (3/8"-16 x 1 1/4")	7		70468	Clip, fuel line	1	
S-109	Capscrew (3/8"-16 x 7/8")	2		S-1004-1	Elbow, tubing	3	
S-112	Capscrew (3/8"-16 x 1")	1		100502	Elbow	1	
S-151	Capscrew (7/16"-14 x 6")	1		114850	Spacer	6	
AR-02336	Connector, assembly	1		S-1054	Tee, tube	1	
AR-02337	Connector, assembly	1		196644	Tube, fuel supply (L.B.)	1	
204255	Link, alternator adjusting	1		196645	Tube, fuel supply (R.B.)	1	
S-604	Lockwasher (3/8")	10		196646	Tube, fuel by-pass	1	
S-610	Lockwasher (7/16")	1		C Application			
S-217	Nut	1		187317	Adapter	1	
176280	Pulley, alternator	1		S-955	Bushing, pipe	1	
191818	Regulator, voltage	1		S-102	Capscrew (5/16"-18 x 1")	6	
102846	Switch, ignition	1		180371	Clip, tube	3	
159110	Switch, magnetic	1		70468	Clip, fuel line	1	
108330	Washer, plain	1		S-1004-1	Elbow, tubing	2	
S-622	Washer, plain	1		114850	Spacer	6	
C Application				S-1054	Tee, tube	1	
181564	Alternator	1		199943	Tube, fuel supply (R.B.)	1	
197171	Belt	2		199944	Tube, fuel supply (L.B.)	1	
189563	Bracket, alternator	1		199945	Tube, fuel by-pass	1	
S-103-D	Capscrew (3/8"-16 x 1 1/4")	3		FUEL DRAIN TUBING			
S-155	Capscrew (7/16"-14 x 1 1/2")	3		All Applications			
S-112	Capscrew (3/8"-16 x 1")	2		S-955	Bushing, pipe	2	
S-140	Capscrew (7/16"-14 x 1 3/4")	1		180372	Clip, tube	2	
162202	Connector, voltage regulator	1		175850	Cross, extruded pipe	1	
130098	Link, alternator, adjusting	1		S-1027	Coupling, tube	1	
S-604	Lockwasher (3/8")	5		43765-A	Elbow, 90°	1	
S-610	Lockwasher (7/16")	4		S-1028	Elbow	1	
162201	Regulator, voltage	1		69187	Nipple, pipe	1	
153030	Switch, relay	1		63385	Spacer	3	
146457	Switch, magnetic	1		185814	Tube, fuel drain	1	
102846	Switch, ignition	1		GASKET SETS			
70880	Washer	1		AR-04543	Gasket set, engine	1	
108330	Washer	1		AR-04544	* Gasket set, cylinder head	1	
S-622	Washer	1		BM-68356	Gasket set, fuel pump	1	
STARTING MOTOR							
Auto Application							
147332	Motor, starting	1		<p>* Note: Cylinder head gasket does not include (4) 209663 Sealing Rings for exhaust manifolds on rear mount turbocharger.</p>			
153581	Capscrew (5/8"-11 x 2")	3					
S-603	Lockwasher (5/8")	3					
C Application							
201741	Motor, starting	1					
153581	Capscrew (5/8"-11 x 2")	3					
114123	Gasket	1					
S-603	Lockwasher (5/8")	3					

PARTS INDENTED ARE INCLUDED IN THE PART UNDER WHICH THEY ARE INDENTED

ENGINE APPLICATION		AUTOMOTIVE		X	B - OFF-HIGHWAY		C - CONSTRUCTION & INDUSTRIAL		X	P - INDUSTRIAL POWER	
PART NUMBER	PART NAME	NO. REQ'D.	REF. NO.		PART NUMBER	PART NAME	NO. REQ'D.	REF. NO.			
	FLYWHEELS, RING GEARS AND FLYWHEEL HOUSINGS										
	Flywheels, ring gears and flywheel housings have been designed to adapt the Cummins diesel to hundreds of different installations. For this reason these assemblies are not listed.										
	Your Cummins Distributor will record flywheel, ring gear and flywheel housing part numbers in the front of this catalog.										
	STANDARD MOUNTING PARTS FOR THE FLYWHEEL										
193787	Adapter, flywheel to crankshaft	1									
183122	Capscrew, adapter to crankshaft.	7									
204165	Capscrew, flywheel to adapter	8									
161701	Cup, grease retainer	1									
60408	Dowel, adapter	2									
172693	Gasket, grease retainer	1									
200861	Washer	4									
	STANDARD MOUNTING PARTS FOR THE FLYWHEEL HOUSING										
	Auto Application										
102020	Capscrew (7/16"-14 x 2 1/4")	3									
S-127	Capscrew (7/16"-14 x 3 3/4")	2									
S-155	Capscrew (7/16"-14 x 1 1/2")	2									
S-162-A	Capscrew (7/16"-14 x 2 3/4")	5									
69562	Dowel	1									
102957	Dowel	1									
S-610	Lockwasher (7/16")	12									
179301	Seal, dust	1									
S-622	Washer, plain	12									
	C Application										
S-122-B	Capscrew (7/16"-14 x 3")	6									
S-127	Capscrew (7/16"-14 x 3 3/4")	2									
S-155	Capscrew (7/16"-14 x 1 1/2")	2									
108707	Capscrew (3/8"-16 x 1 1/2")	2									
S-112	Capscrew, cover	4									
200685	Cover	1									
69562	Dowel	1									
102957	Dowel	1									
182459	Gasket	1									
S-604	Lockwasher, cover (3/8")	4									
S-610	Lockwasher (7/16")	12									
200731	"O" ring	1									
S-995	Plug, pipe (3/4")	1									
193501	Ring, sealing	10									

PARTS INDENTED ARE INCLUDED IN THE PART UNDER WHICH THEY ARE INDENTED