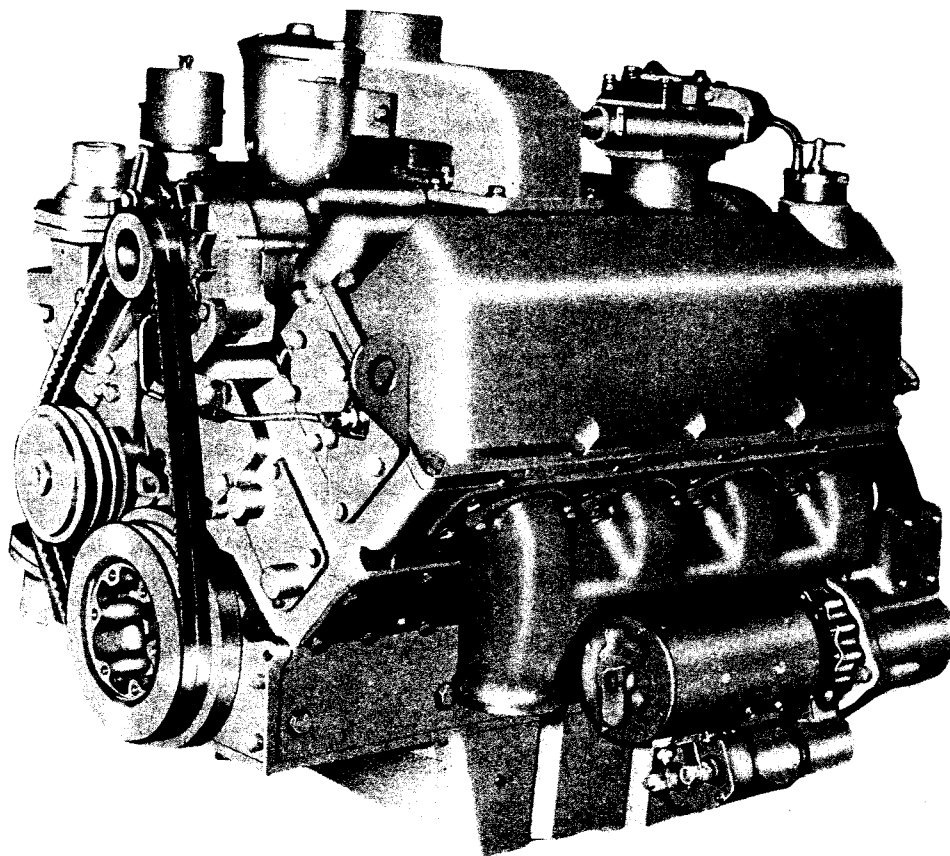


Cummins Parts Catalog

Model: V-470 Series

Bulletin No. 967115-A



Parts Ordering for: V-470 Series

Genuine Cummins Parts and service facilities are world-wide. There are more than 1600 Cummins Sales and Service locations in the principal cities of the United States and Canada, and more than 300 Sales and Service locations situated elsewhere throughout the free world. Each distribution outlet is thoroughly equipped with technical data, factory-trained mechanics, modern equipment and a full, adequate stock of Genuine Cummins Parts.

For quicker and better service, your parts requirements should be ordered from your nearest Cummins Distributor or Dealer. At any of the locations prompt, intelligent, courteous service is a basic trademark. Each is ready and eager to help in every possible way through personal contact or through the mail — at your convenience.

The satisfactory ordering and receiving of parts by the purchaser is greatly dependent upon the proper use of available information. In order that all avoidable errors may be eliminated, the following instructions are offered as the purchaser's guide:

1. Write your order clearly, using a typewriter if possible.

2. Be sure to list the correct part number. If in doubt as to the correct part number, state the model and serial number of the engine on which the part is to be used. Part numbers are usually located in various places on the part itself.
3. When possible, arrange your purchase order in part number numerical sequence.
4. Always specify shipping instructions — "Best Way" is satisfactory if you have no preference.
5. State your company name and shipping address clearly.

Genuine Cummins Parts mean **QUALITY!** They're designed and engineered to fit best in your Cummins Diesel. Each part is made of the highest quality material — on the most accurate of machines — by the top craftsmen of the trade.

You can be sure a Genuine Cummins Part will fit better — do the job better — lessen the chances of costly breakdown. When you buy replacement parts, buy quality. Buy Genuine Cummins Parts!

YOU OWN THE BEST . . . REPAIR WITH THE BEST

FOREWORD

This Parts Catalog contains standard parts information for the V-470 Naturally Aspirated engines.

IMPORTANT

Two series of V-470 engines have been manufactured by Cummins Engine Company, Inc. These can be identified by the engine serial number letter prefix. This Parts Catalog pertains **only** to the engines that have the letter "F" prefix in the engine serial number. For engines having the letter "D" prefix in the engine serial number, please refer to Parts Catalog Bulletin number L-967020-A or Bulletin number 967088.

ENGINE APPLICATION INFORMATION

Explanation of the letter designations for the various engine applications is listed below.

Auto = Automotive Application.

B = Off highway application, less air compressor

C = Construction and mining applications, mobile type of equipment.

P = Industrial application, radiator cooled, stationary unit.

In the engine application box at the top of each page, an “X” will appear only in the application column to which the parts information on the page is applicable.

In those cases, when assemblies and/or parts are variable to applications, direction is provided to identify the assembly or parts pertinent to the Engine Application. Part numbers appearing in () are for identification purposes only and should not be used when ordering service replacement parts.

SPECIAL PARTS

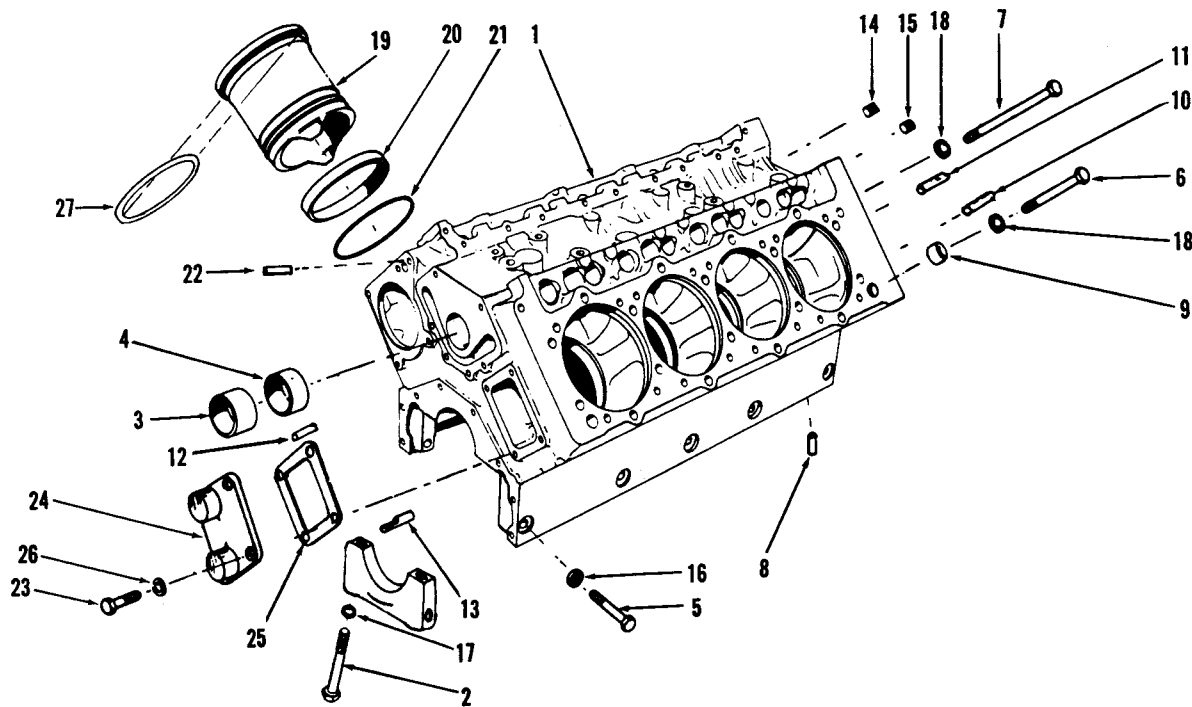
Special Parts peculiar to the engine can be listed on the form below. To make certain you have ordered correct parts, refer to this form before submitting Parts Order.

[illegible]

Cummins Distributor _____

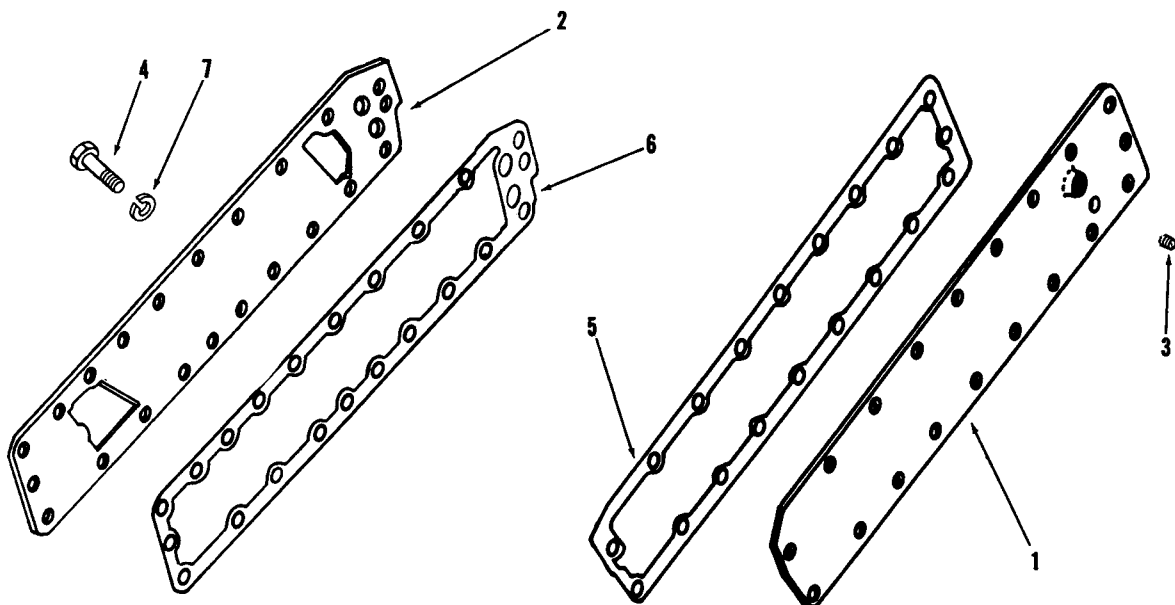
Table of Contents

	Page	Grid		Page	Grid
Air Compressor—Cummins Compact	30-31	C9,10	Fuel Pump Damper	34	D1
Air Intake Manifold	27	C6	Fuel Pump	34	D1
Air Cleaner	28-29	C7,8	Fuel Tubing	35	D2
Alternator	37	D4	Gasket Sets	38	D5
Breather	10	B1	Gear Housing And Cover	11	B2
Camshaft And Cover	6	A9	Injector	33	C12
Camshaft Bushings	1	A4	Instrument Panel	36	D3
Connecting Rod	4	A7	Lubricating Oil Cooler	19	B10
Corrosion Resistor	21	B12	Lubricating Oil Filter	17	B8
Crankshaft	3	A6	Lubricating Oil By-Pass Filter	18	B9
Cylinder Block	1	A4	Lubricating Oil Pump	12-13	B3,4
Cylinder Head	9	A12	Main Bearing Shells	3	A6
Cylinder Head Cover	10	B1	Numerical Index	39-42	D6-9
Cylinder Liner	1	A4	Oil Pan	14,15 16	B5,6 7
Dipstick And Tube	14,15 16	B5,6 7	Pistons	4	A7
Electrical Equipment	37	D4	Piston Rings	4	A7
Exhaust Manifold	26	C5	Push Rods	7	A10
Fan And Guard	24-25	C3,4	Radiator	24-25	C3,4
Fan Hub	23	C2	Rear Engine Support	5	A8
Flywheel Housing	38	D5	Rocker Levers	8	A11
Flywheel and Ring Gear	38	D5	Shutdown Valve	33	C12
Front Cover	5	A8	Starting Motor	37	D4
Front Engine Support	5	A8	Thermostat And Housing	22	C1
Front Water Header Cover	1	A4	Tappets	7	A10
Fuel Filter	34	D1	Vibration Damper	3	A6
Fuel Gear Pump	34	D1	Water Header Cover	2	A5
Fuel Pump Drive	32	C11	Water Pump And Pulley	20	B11



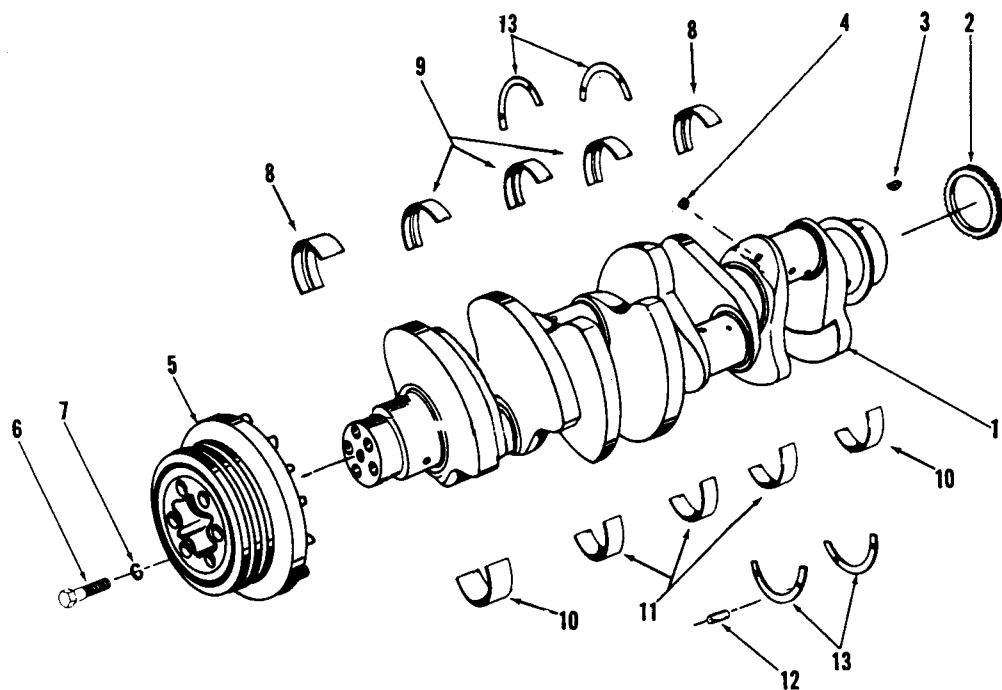
ENGINE APPLICATION		AUTOMOTIVE		B - OFF-HIGHWAY		C - CONSTRUCTION & INDUSTRIAL		P - INDUSTRIAL POWER	
		X				X		X	
PART NUMBER	PART NAME	NO. REQ'D.	REF. NO.	PART NUMBER	PART NAME	NO. REQ'D.	REF. NO.		
	CYLINDER BLOCK			553371	Data plate	1			
BM-99814	Block, cylinder (183070)	1	1	S-2286	Screw, data plate	4			
180676	Bolt, main bearing cap (9/16"-18 x 4-5/8")	10	2	70760	Dowel	1	22		
554003	Bushing, camshaft (No. 1 and 5 position)	2	3	FRONT WATER HEADER COVER					
554004	Bushing, camshaft (No. 2, 3, and 4 position)	3	4	S-112	Capscrew, water header cover	4	23		
188395	Capscrew, main bearing side locking (9/16"-18 x 2-5/8")	10	5	167801	Cover, water header	1	24		
162182	Capscrew, cylinder head (short) (1/2"-20 x 4-15/16")	26	6	167802	Gasket, water header cover	1	25		
162183	Capscrew, cylinder head (long) (1/2"-20 x 8-7/8")	10	7	S-604	Lockwasher, water header cover	4	26		
148547	Dowel, rear main bearing cap	2	8	OVERSIZE FOR SERVICE					
100973	Dowel ring, cylinder head to block	4	9	171786	Shim liner (.007)	A/R	27		
69562	Dowel, gear housing to block (Master)	2	10	171787	Shim liner (.010)	A/R	27		
102957	Dowel, gear housing to block (Diamond)	2	11	171788	Shim liner (.012)	A/R	27		
70645	Dowel, front cover to block (Master)	1	12	171789	Shim liner (.014)	A/R	27		
68568	Dowel, front cover to block (Diamond)	1	13	171790	Shim liner (.021)	A/R	27		
67622	Plug, pipe (3/8")	2	14	SEMI-FINISHED MAIN BEARING CAPS					
S-911-B	Plug, pipe (1/4")	4	15	193010	Main bearing cap front	1			
188394	Washer, main bearing side locking capscrew (5/8")	10	16	193013	Main bearing cap intermediate No. 2	1			
164601	Washer, main bearing cap (9/16")	10	17	193011	Main bearing cap intermediate No. 4	1			
153411	Washer, cylinder head capscrew (9/16")	36	18	193012	Main bearing cap intermediate No. 3	1			
	MOUNTING PARTS			193009	Main bearing cap rear	1			
179710	Liner, cylinder	8	19						
171880	Seal, crevice	8	20						
171270	Packing, cylinder liner	8	21						

PARTS INDENTED ARE INCLUDED IN THE PART UNDER WHICH THEY ARE INDENTED



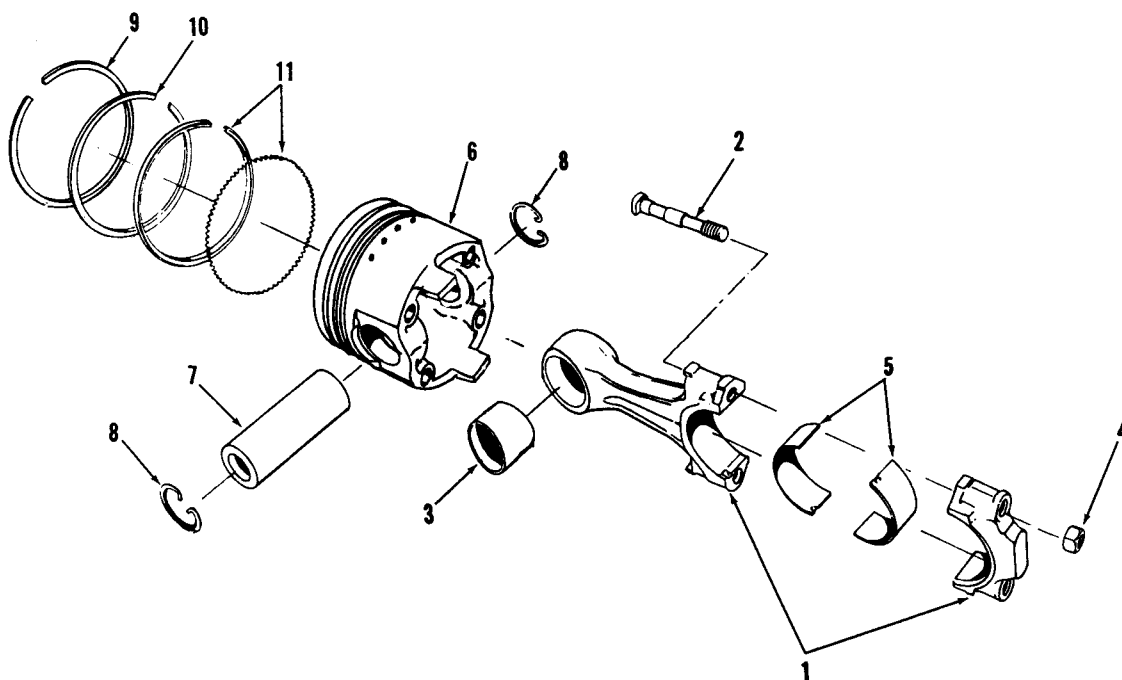
ENGINE APPLICATION		AUTOMOTIVE		B - OFF-HIGHWAY		C - CONSTRUCTION & INDUSTRIAL		P - INDUSTRIAL POWER	
		X				X		X	
PART NUMBER	PART NAME	NO. REQ'D.	REF. NO.	PART NUMBER	PART NAME	NO. REQ'D.	REF. NO.		
	WATER HEADER COVER								
193557	Cover, water header (L.B.)	1	1						
176596	Cover, water header (R.B.)	1	2						
68606	Plug, pipe (1/8"-27 NPTF)	1	3						
	MOUNTING PARTS								
S-109	Capscrew, cover to block (3/8"-16 x 7/8")	30	4						
167800	Gasket, cover to block (L.B.)	1	5						
176598	Gasket, cover to block (R.B.)	1	6						
S-604	Lockwasher (3/8") cover to block	30	7						

PARTS INDENTED ARE INCLUDED IN THE PART UNDER WHICH THEY ARE INDENTED



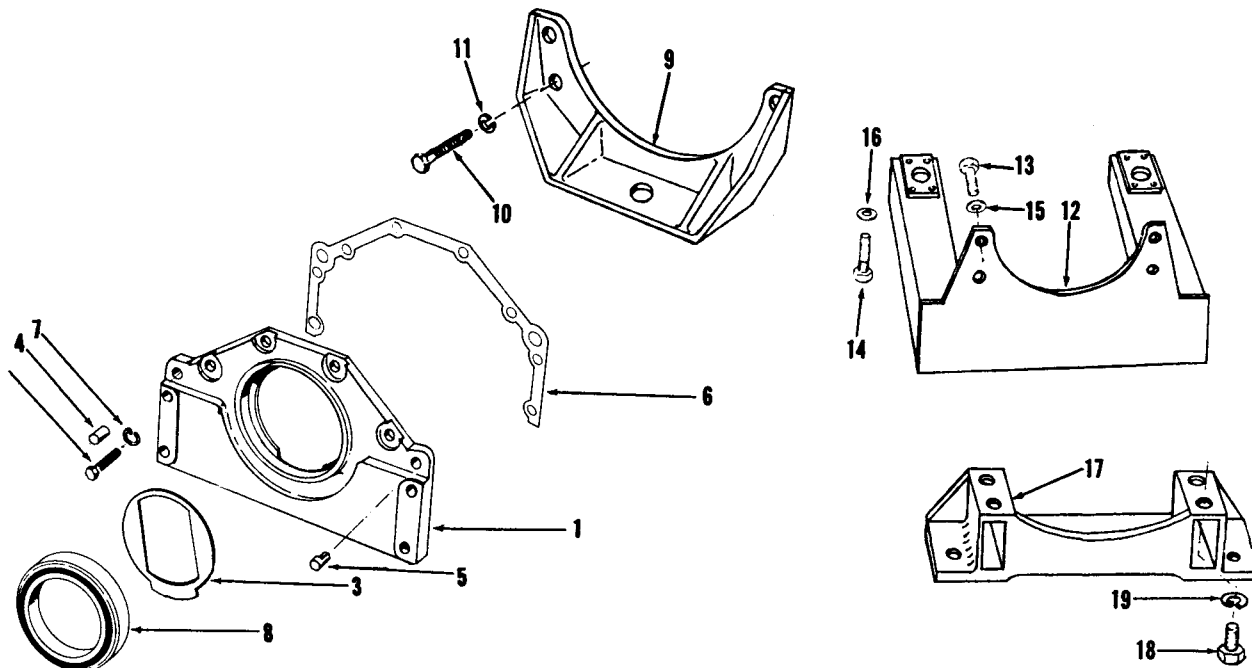
ENGINE APPLICATION		AUTOMOTIVE		X		B - OFF-HIGHWAY		C - CONSTRUCTION & INDUSTRIAL		X		P - INDUSTRIAL POWER		X	
PART NUMBER		PART NAME		NO. REQ'D.		REF. NO.		PART NUMBER		PART NAME		NO. REQ'D.		REF. NO.	
		CRANKSHAFT								MAIN BEARINGS					
BM-99677	Crankshaft assembly	1		BM-99820	*	Bearing set, main (Std.)	1								
182360	Crankshaft	1	1	182310		Bearing, main (Upper 1 and 5)	2	8							
177086	Gear, crankshaft	1	2	182400		Bearing, main (Upper 2,3 and 4)	3	9							
144131	Key, crankshaft gear	1	3	182200		Bearing, main (Lower 1 and 5)	2	10							
S-911-B	Plug, pipe (1/8"-27 NPTF)	4	4	182210		Bearing, main (Lower 2,3 and 4)	3	11							
				128765		Dowel, half ring	2	12							
				173640		Half ring, crankshaft thrust (Upper)	2	13							
				553670		Half ring, crankshaft thrust (Lower)	2	13							
				553671		Half ring, crankshaft thrust (.010")	2	13							
				553672		Half ring, crankshaft thrust (.020")	2	13							
BM-96141	Damper, vibration (175172)	1	5												
S-149-B	Capscrew, damper (1/2"-20 x 1 1/2")	5	6												
S-608	Lockwasher, damper (1/2")	5	7												
					*	Main bearings may be purchased in .010", .020", .030" or .040" under-size.									

PARTS INDENTED ARE INCLUDED IN THE PART UNDER WHICH THEY ARE INDENTED



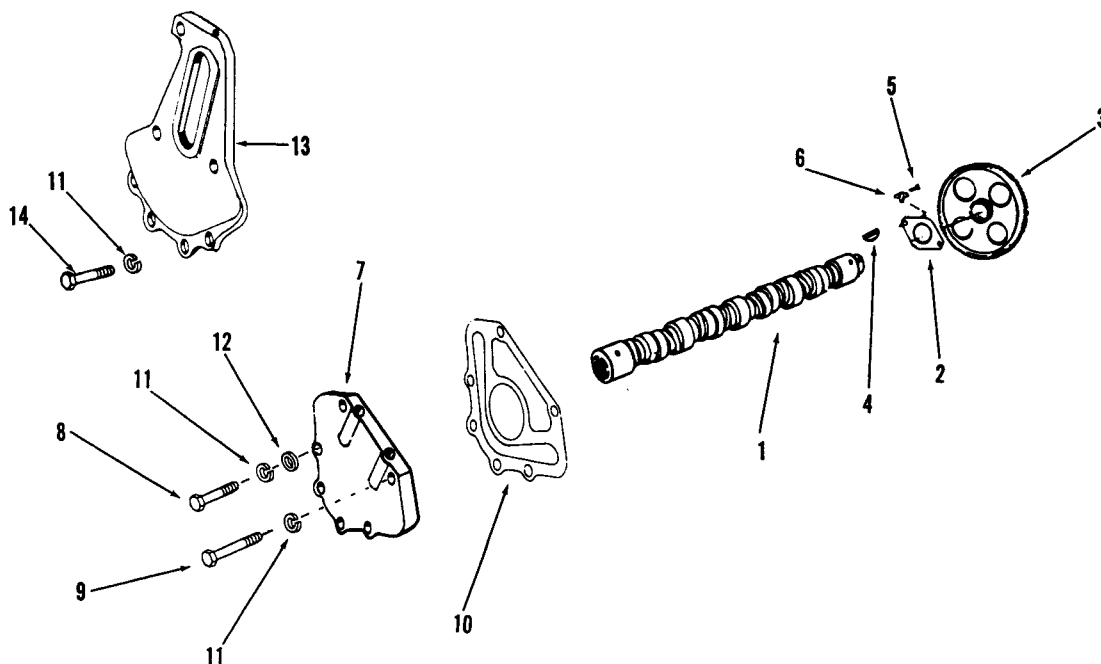
ENGINE APPLICATION		AUTOMOTIVE		X	B - OFF-HIGHWAY		C - CONSTRUCTION & INDUSTRIAL		X	P - INDUSTRIAL POWER		X
PART NUMBER	PART NAME	NO. REQ'D.	REF. NO.	PART NUMBER	PART NAME	NO. REQ'D.	REF. NO.	PART NUMBER	PART NAME	NO. REQ'D.	REF. NO.	
CONNECTING ROD				PISTON								
BM-78784	Rod, connecting (166452)	8	1	BM-96200	Piston, assembly (Std.)	8						
157626	Bolt, connecting rod (7/16"-20 x 3-5/16")	16	2	183510	Piston	8				8	6	
195360	Bushing, piston pin	8	3	151770	Pin, piston	8				8	7	
152838	Nut, connecting rod bolt (7/16")	16	4	157978	Ring, snap	16				8		
157620	Bearing, connecting rod (Std.)	16	5									
	* Connecting rod bearing shells may be purchased in .010", .020", .030" and .040" undersize.			AR-61400	RINGS							
				171690	Ring set, piston (Std.)	8						
				208990	Ring, compression (Top)	8				8	9	
				204930	Ring, compression	8				10		
					Ring, oil	8				11		

PARTS INDENTED ARE INCLUDED IN THE PART UNDER WHICH THEY ARE INDENTED



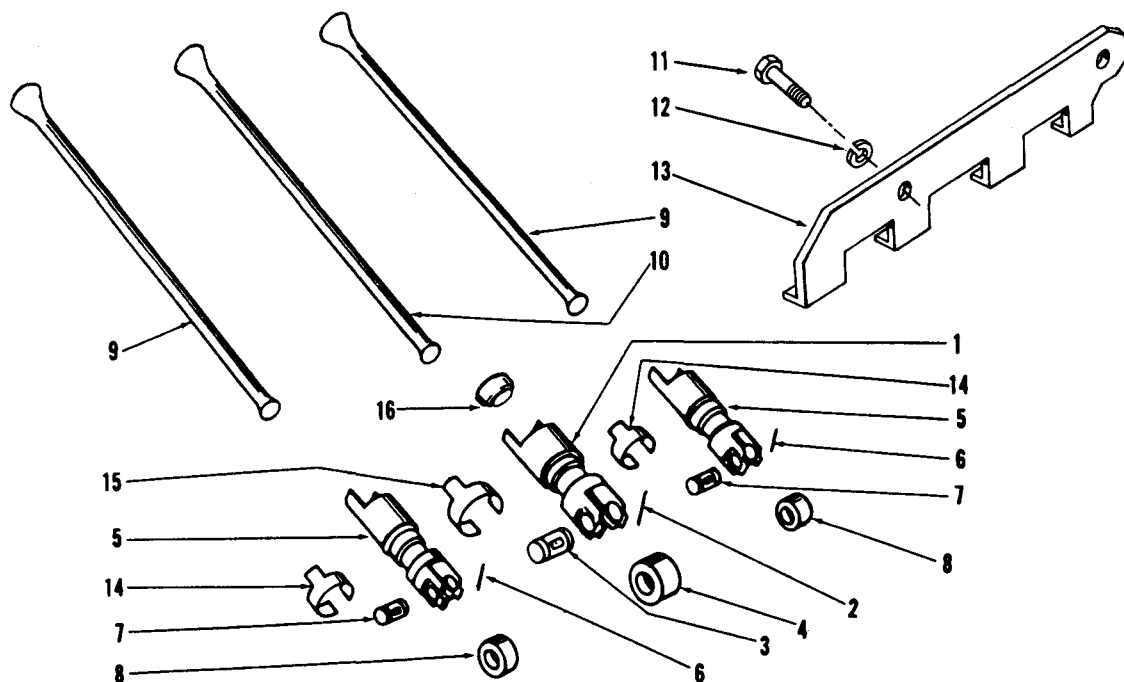
ENGINE APPLICATION		AUTOMOTIVE		B - OFF-HIGHWAY		C - CONSTRUCTION & INDUSTRIAL		P - INDUSTRIAL POWER	
			X				X		X
PART NUMBER	PART NAME	NO. REQ'D.	REF. NO.	PART NUMBER	PART NAME	NO. REQ'D.	REF. NO.		
	FRONT COVER				FRONT ENGINE SUPPORT				
188393	Cover, front	1	1		Auto, C Applications				
S-109	Capscrew, front cover (3/8"-16 x 7/8")	4	2	188397	Support, front	1	9		
173090	Deflector, oil	1	3		MOUNTING PARTS				
70645	Dowel (Master)	1	4		Capscrew, front support (1/2"-13 x 2-1/4")	4	10		
68568	Dowel (Diamond)	1	5	106289	Lockwasher (1/2")	4	11		
188396	Gasket, front cover	1	6		P Applications				
S-604	Lockwasher (3/8")	4	7		Same as above except:				
551514	Seal, oil	1	8						
				650368	Support, front	1	12		
				106289	Capscrew, support to block	4	13		
				S-139	Capscrew, radiator base mounting	2	14		
				S-608	Lockwasher	4	15		
				S-603	Lockwasher	2	16		
					P Application Only				
				650450	Support, rear engine	1	17		
				S-145	Capscrew (1/2"-13 x 1-1/4")	4	18		
				S-608	Lockwasher (1/2")	4	19		

PARTS INDENTED ARE INCLUDED IN THE PART UNDER WHICH THEY ARE INDENTED



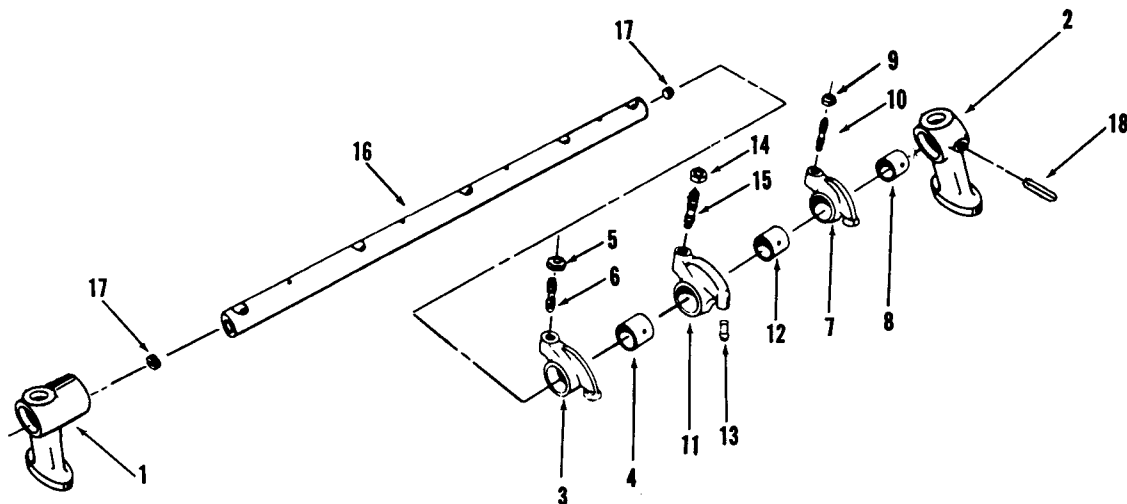
ENGINE APPLICATION		AUTOMOTIVE		X	B - OFF-HIGHWAY		C - CONSTRUCTION & INDUSTRIAL		X	P - INDUSTRIAL POWER		X
PART NUMBER	PART NAME	NO. REQ'D.	REF. NO.	PART NUMBER	PART NAME	NO. REQ'D.	REF. NO.					
	CAMSHAFT				CAMSHAFT COVER							
	All Applications			167834	Cover, camshaft	1	7					
				108707	Capscrew, camshaft cover (3/8"-16 x 1-1/2")	5	8					
AR-60615	Camshaft	1										
201050	Camshaft	1	1	S-137	Capscrew, camshaft cover (3/8"-16 x 2")	1	9					
167305	Bearing, camshaft thrust	1	2		Gasket, camshaft cover	1	10					
187649	Gear, camshaft	1	3	550164	Lockwasher, cover (3/8")	6	11					
S-313	Key, camshaft	1	4	S-604	Washer, plain (13/32")	5	12					
				S-602								
	MOUNTING PARTS				HIGH MOUNT FAN							
S-107	Capscrew, thrust bearing (5/16"-18 x 3/4")	2	5		Same as above except:							
68908-A	Lockplate, thrust bearing	2	6									
				ADD:								
				182697	Cover, camshaft	1	13					
				S-103-D	Capscrew, camshaft cover (3/8"-16 x 1-1/4")	4	14					
				OMIT:								
				S-602	Washer, plain	5	12					
				S-137	Capscrew, camshaft cover	1	9					
				108707	Capscrew (3/8"-16 x 1-1/2")	3	8					

PARTS INDENTED ARE INCLUDED IN THE PART UNDER WHICH THEY ARE INDENTED



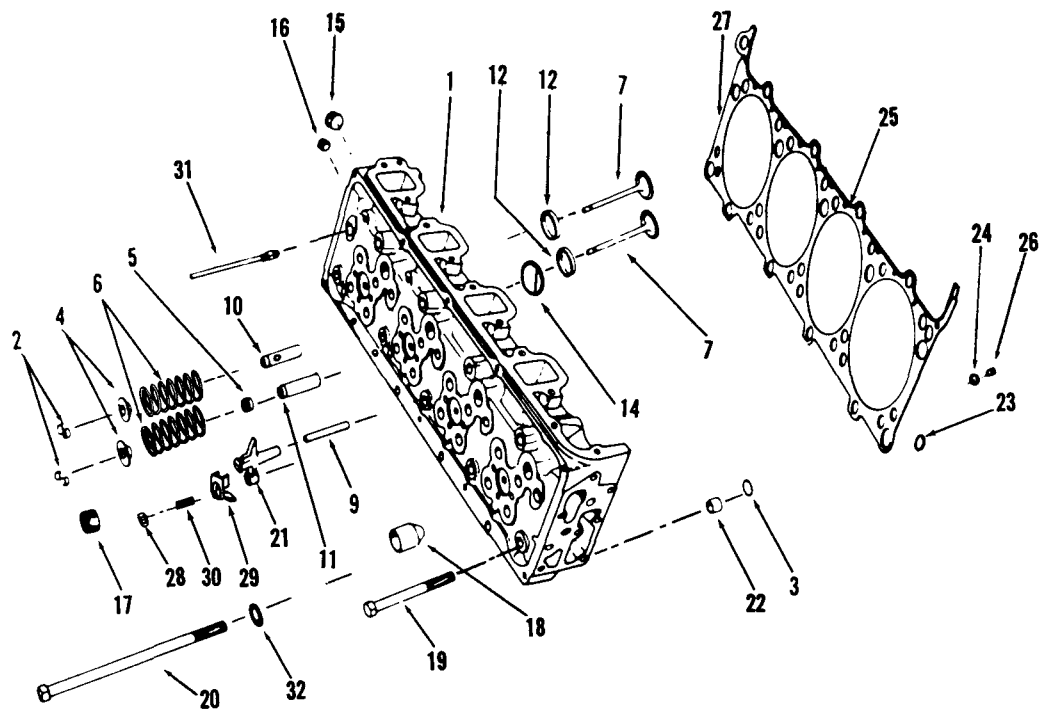
ENGINE APPLICATION		AUTOMOTIVE		X	B - OFF-HIGHWAY		C - CONSTRUCTION & INDUSTRIAL		X	P - INDUSTRIAL POWER		X			
PART NUMBER		PART NAME		NO. REQ'D.		REF. NO.		PART NUMBER		PART NAME		NO. REQ'D.		REF. NO.	
		PUSH RODS AND TAPPETS													
BM-94016		Tappet, injector assembly (171936)		8		1									
107738		Socket		8		16									
108187		Lockwire, tappet		8		2									
114223		Pin, injector tappet roller		8		3									
154571		Roller, injector tappet		8		4									
BM-94014		Tappet, valve (171937)		16		5									
108186		Lockwire, tappet		16		6									
169154		Pin, valve tappet		16		7									
153679		Roller, valve tappet		16		8									
168209		Rod, valve push		16		9									
170326		Rod, injector push		8		10									
		MOUNTING PARTS													
S-110		Capscrew, tappet guide plate (5/16"-18 x 5/8")		16		11									
S-605		Lockwasher, tappet guide plate (5/16")		16		12									
551084		Plate, tappet guide		8		13									
156438		Spring, valve tappet		16		14									
156439		Spring, injector tappet		8		15									

PARTS INDENTED ARE INCLUDED IN THE PART UNDER WHICH THEY ARE INDENTED



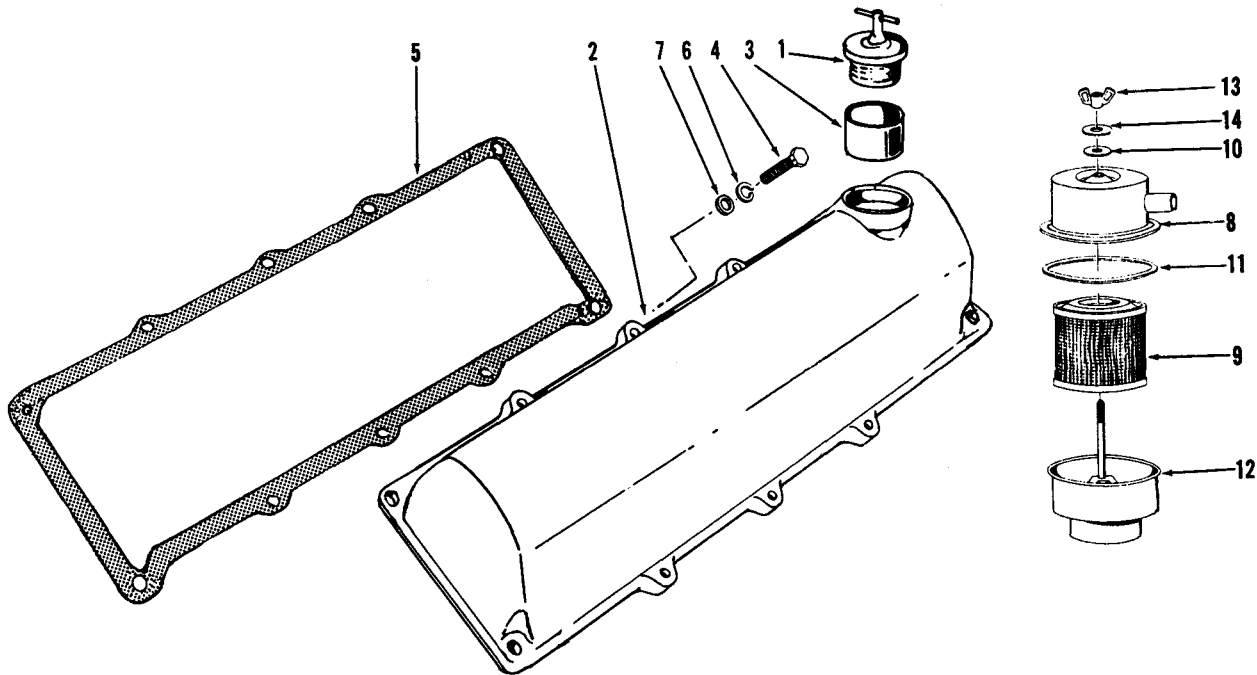
ENGINE APPLICATION		AUTOMOTIVE		X	B - OFF-HIGHWAY		C - CONSTRUCTION & INDUSTRIAL		X	P - INDUSTRIAL POWER		X
PART NUMBER		PART NAME		NO. REQ'D.	REF. NO.	PART NUMBER		PART NAME		NO. REQ'D.	REF. NO.	
		ROCKER LEVERS										
154109	Bracket, rocker lever shaft	8	1									
551608	Bracket, rocker lever shaft	2	2									
BM-79723	Lever, exhaust valve-rocker (168285)	8										
BM-79722	Lever and bushing	8	3									
152937	Bushing, valve rocker lever	8	4									
S-212	Nut, adjusting screw (1/2")	8	5									
168306	Screw, adjusting	8	6									
BM-79725	Lever, intake rocker (168255)	8										
BM-79724	Lever and bushing	8	7									
152937	Bushing, valve rocker lever	8	8									
S-212	Nut, adjusting screw	8	9									
168306	Screw, adjusting	8	10									
BM-99987	Lever, injector rocker (194038)	8										
BM-99986	Lever and bushing	8	11									
152936	Bushing, injector rocker lever	8	12									
194037	Socket, injector link	8	13									
S-212	Nut, adjusting screw	8	14									
168306	Screw, adjusting	8	15									
AR-60508	Shaft, rocker lever (551607)	2	16									
161825	Plug, rocker shaft	4	17									
551609	Pin, rocker shaft locating	2	18									

PARTS INDENTED ARE INCLUDED IN THE PART UNDER WHICH THEY ARE INDENTED



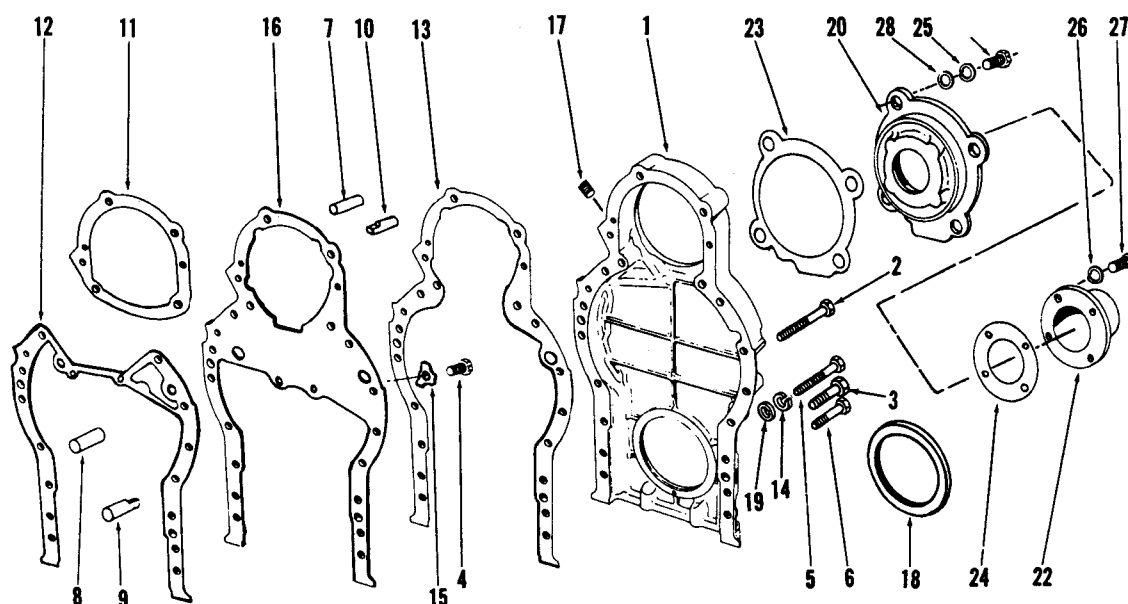
ENGINE APPLICATION		AUTOMOTIVE		X		B - OFF-HIGHWAY		C - CONSTRUCTION & INDUSTRIAL		X		P - INDUSTRIAL POWER		X	
PART NUMBER		PART NAME		NO. REQ'D.		REF. NO.		PART NUMBER		PART NAME		NO. REQ'D.		REF. NO.	
		CYLINDER HEAD								MOUNTING PARTS					
AR-60078	Head assembly, cylinder (157782)	2	1	162182	Capscrew, cylinder head (short)	26	19								
166772	Half collet, valve	64	2	162183	Capscrew, cylinder head (long)	10	20								
155441	Retainer, spring	32	4	156879	Crosshead, valve	16	21								
156541	Seal, intake valve	16	5	100973	Dowel ring, cylinder head to block	4	22								
163037	Spring, valve	32	6	553019	"O" ring	4	3								
166774	Valve, exhaust & intake	32	7	BM-79721	Gasket, cylinder head (190740)	2	27								
AR-60079	Head assembly, less valves	2		156081	Grommet	12	23								
154220	Guide, crosshead	16	9	156082	Grommet, oil and water	34	24								
154946	Guide, exhaust valve	16	10	156674	Grommet, push tube opening	2	25								
551759	Guide, intake valve	16	11	181272	Retainer, grommet	34	26								
195000	Insert, valve seat, intake and exhaust	32	12	S-273	Nut, crosshead adjusting	16	28								
553461	Plate, swirl	16	14	190817	Retainer, crosshead (exhaust)	8	29								
551475	Plug, cup	8		147389	Screw, crosshead adjusting	16	30								
550973	Plug, pipe	16		BM-78775	Tube, vent (153882)	2	31								
S-910-B	Plug, pipe (1/4")	2	15	S-1003-1	Connector, tube	2									
S-911-B	Plug, pipe (1/8")	6	16	S-1022-A	Nut, tube	2									
S-995	Plug, pipe (3/4")	8	17	153411	Washer, cylinder head capscrew	36	32								
169630	Sleeve, injector	8	18												
					OPTIONAL										
				AR-00588	Gasket, cylinder head (.010")	2									
				AR-00589	Gasket, cylinder head (.020")	2									
				171999	Guide, valve crosshead (oversize)	A/R									

PARTS INDENTED ARE INCLUDED IN THE PART UNDER WHICH THEY ARE INDENTED



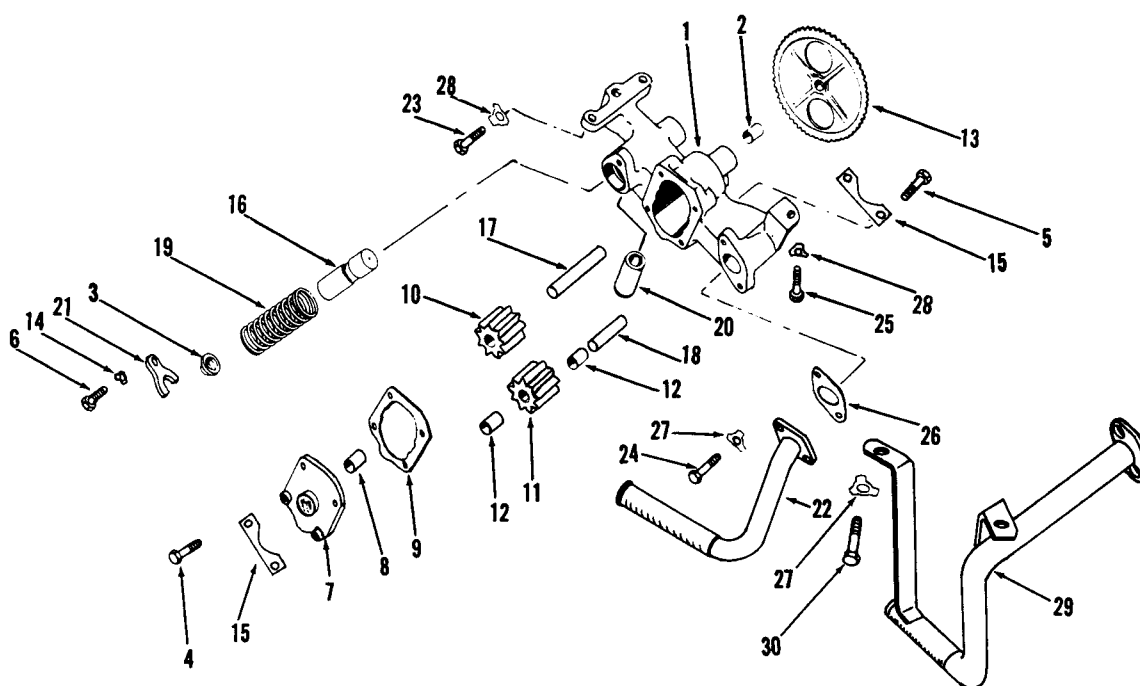
ENGINE APPLICATION		AUTOMOTIVE		B - OFF-HIGHWAY		C - CONSTRUCTION & INDUSTRIAL		P - INDUSTRIAL POWER	
		X				X		X	
PART NUMBER	PART NAME	NO. REQ'D.	REF. NO.	PART NUMBER	PART NAME	NO. REQ'D.	REF. NO.		
	CYLINDER HEAD COVER				BREATHER				
	Auto Application				All Applications				
101322	Cap, oil filler	1	1	154272	Breather, crankcase	1			
AR-60122	Cover and tube (R.B.)	1		155997	Cover, breather	1	8		
551786	Cover, cylinder head (R.B.)	1	2	AF-250	Element	1	9		
550113	Tube, filler	1	3	125015	Gasket, washer	1	10		
551786	Cover, cylinder head (L.B.)	1		125019	Gasket, cover	1	11		
				155998	Housing, element	1	12		
				125017	Nut, wing, cover	1	13		
				125016	Washer, plain cover	1	14		
	C. P Applications								
	Same as above except:								
107981	Cap, oil filler	1	1						
	MOUNTING PARTS								
108707	Capscrew, cover (3/8"-16 x 1 1/2")	20	4						
157018	Gasket, cover	2	5						
S-604	Lockwasher (3/8")	20	6						
S-602	Washer, plain (13/32")	20	7						

PARTS INDENTED ARE INCLUDED IN THE PART UNDER WHICH THEY ARE INDENTED



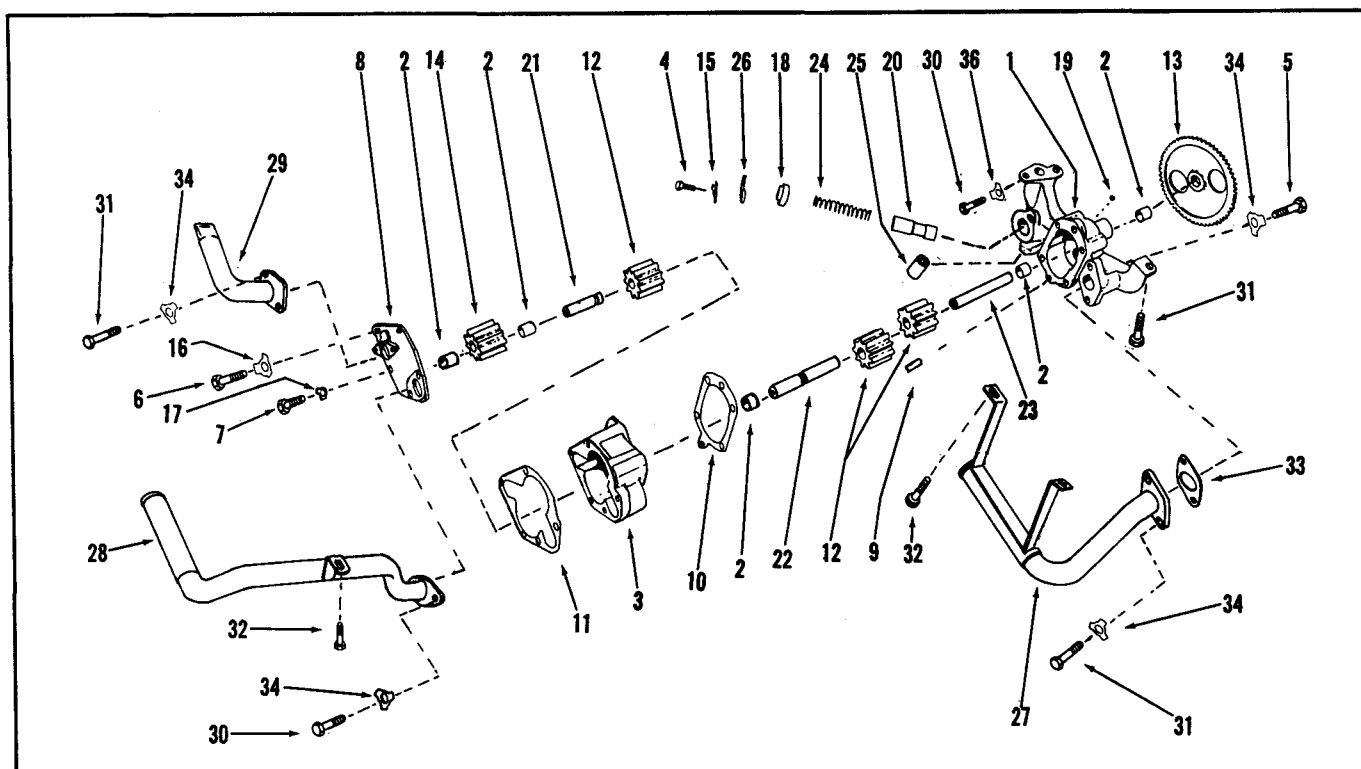
ENGINE APPLICATION		AUTOMOTIVE		X	B - OFF-HIGHWAY		C - CONSTRUCTION & INDUSTRIAL		X	P - INDUSTRIAL POWER		X
PART NUMBER	PART NAME	NO. REQ'D.	REF. NO.	PART NUMBER	PART NAME	NO. REQ'D.	REF. NO.					
	GEAR HOUSING				C, P Applications							
	Auto Application				Same as Auto except:							
168644	Housing, gear	1	1	171627	Housing, gear (P)	1	1					
S-102-D	Capscrew, housing to block (3/8"-16 x 3")	1	2	172645	Housing, gear (C)	1	1					
S-104	Capscrew, housing to block (3/8"-16 x 2-1/4")	6	3									
S-109	Capscrew, plate to block (3/8"-16 x 7/8")	2	4		GEAR HOUSING COVER							
S-126	Capscrew, housing to block (3/8"-16 x 2-1/2")	1	5		Auto Application Only							
108707	Capscrew, housing to block (3/8"-16 x 1-1/2")	6	6	551161	Cover, gear housing	1	20					
9089	Dowel (Master)	6	7	S-163	Capscrew (3/8"-16 x 3-1/4")	4	21					
69562	Dowel (Master)	1	8	551160	Cover, drive shaft	1	22					
102957	Dowel (Diamond)	1	9	153433	Gasket, support	1	23					
153807	Dowel (Diamond)	1	10	550123	Gasket	1	24					
167993	Gasket, compressor support	1	11	S-604	Lockwasher (3/8")	4	25					
168649	Gasket, plate to block	1	12	S-607	Lockwasher (3/16")	4	26					
168650	Gasket, gear housing to plate	1	13	131449	Screw	4	27					
S-604	Lockwasher, housing to block (3/8")	14	14	S-602	Washer, plain (13/32")	4	28					
175282	Lockplate, plate to block	2	15									
551467	Plate, gear housing	1	16									
S-911-B	Plug, pipe (1/8")	1	17									
551515	Seal, oil	1	18									
S-602	Washer, plain (13/32")	14	19									

PARTS INDENTED ARE INCLUDED IN THE PART UNDER WHICH THEY ARE INDENTED



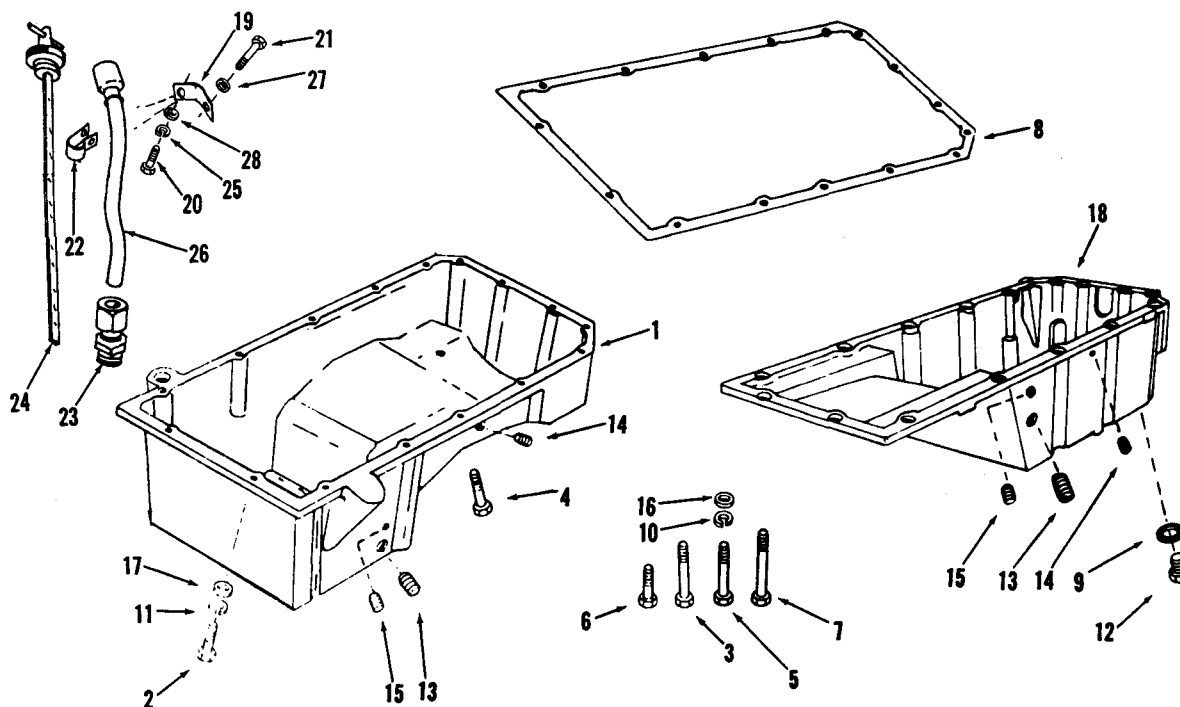
ENGINE APPLICATION		AUTOMOTIVE		X B - OFF-HIGHWAY		C - CONSTRUCTION & INDUSTRIAL		P - INDUSTRIAL POWER		X	
PART NUMBER	PART NAME	NO. REQ'D.	REF. NO.	PART NUMBER	PART NAME	NO. REQ'D.	REF. NO.	PART NUMBER	PART NAME	NO. REQ'D.	REF. NO.
	LUBRICATING OIL PUMP				MOUNTING PARTS						
	Rear Sump Pan			S-103-D	Capscrew, pump to block	2	23				
				S-109	Capscrew, tube to pump	2	24				
	Auto, P Application			S-112	Capscrew, pump to block	1	25				
				164916	Gasket, tube to pump	1	26				
AR-60098	Pump, lubricating oil	1		109319	Lockplate, tube to pump	2	27				
AR-60089	Body and bushing (187011)	1	1	175282	Lockplate, pump to block	3	28				
68586	Bushing	1	2								
175805	Cap, by-pass spring	1	3								
S-107	Capscrew, cover to body (5/16"-18 x 3/4")	2	4		LUBRICATING OIL PUMP						
S-155-A	Capscrew, cover to body (5/16"-18 x 2-1/2")	2	5		Front Sump Pan						
S-109	Capscrew, regulator (3/8"-16 x 7/8")	1	6		Same as rear sump except:						
AR-60092	Cover and bushing (181165)	1	7	ADD:							
68586	Bushing	1	8	AR-60086	Pump, lubricating oil	1					
178283	Gasket, cover	1	9	AR-60486	Tube, suction	1	29				
187012	Gear, idler drive	1	10	S-117	Capscrew	2	30				
AR-60090	Gear, idler (187013)	1	11	109319	Lockplate, tube to block	2	27				
68586	Bushing	2	12	OMIT:							
184044	Gear, main drive	1	13	175795	Tube, by-pass	1	20				
109319	Lockplate, regulator	1	14								
551117	Lockplate, cover to body	2	15								
183014	Plunger, pressure regulator	1	16								
178284	Shaft, drive	1	17								
190138	Shaft, idler	1	18								
551079	Spring, regulator	1	19								
175795	Tube, by-pass	1	20								
126304	Yoke, pressure regulator	1	21								
AR-60495	Tube, suction assembly	1	22								

PARTS INDENTED ARE INCLUDED IN THE PART UNDER WHICH THEY ARE INDENTED



ENGINE APPLICATION		AUTOMOTIVE		B - OFF-HIGHWAY		C - CONSTRUCTION & INDUSTRIAL		X	P - INDUSTRIAL POWER	
PART NUMBER	PART NAME	NO. REQ'D.	REF. NO.	PART NUMBER	PART NAME	NO. REQ'D.	REF. NO.			
	LUBRICATING OIL PUMP				MOUNTING PARTS					
AR-60108	Pump, lubricating oil	1		S-103-D	Capscrew, pump to block	2	30			
AR-60105	Body (190141)	1	1	S-112	Capscrew, pump to block	1	31			
68586	Bushing	2	2	S-103-D	Capscrew, suction tube	2	30			
BM-92138	Body, scavenger (178276)	1	3	S-112	Capscrew, suction tube	4	31			
68586	Bushing	2	2	S-117	Capscrew, suction tube	3	32			
S-109	Capscrew, regulator	1	4	164916	Gasket, suction tube to pump	2	33			
S-155-A	Capscrew, cover to body	2	5	175282	Lockplate, suction tube to pump	9	34			
S-138-C	Capscrew, cover	2	6							
S-115	Capscrew, cover	1	7							
178281	Cover, pump	1	8							
70760	Dowel	1	9							
551516	Dowel	1								
178283	Gasket, pump	1	10							
178282	Gasket, cover	1	11							
187012	Gear	3	12							
184044	Gear, drive	1	13							
BM-96834	Gear, idler (179065)	1	14							
68586	Bushing	2	2							
109319	Lockplate	1	15							
117559	Lockplate	2	16							
68908-A	Lockplate	1	17							
175805	Plug, by-pass valve	1	18							
S-965-E	Plug, pipe	1	19							
183014	Plunger, regulator	1	20							
190145	Shaft, scavenger pump drive	1	21							
178286	Shaft, idler	1	22							
178284	Shaft, drive	1	23							
551079	Spring, by-pass valve	1	24							
175795	Tube, by-pass	1	25							
126304	Yoke, cap retaining	1	26							
BM-94498	Tube, oil suction	1	27							
BM-99803	Tube, scavenger suction	1	28							
BM-91498	Tube, aerator	1	29							

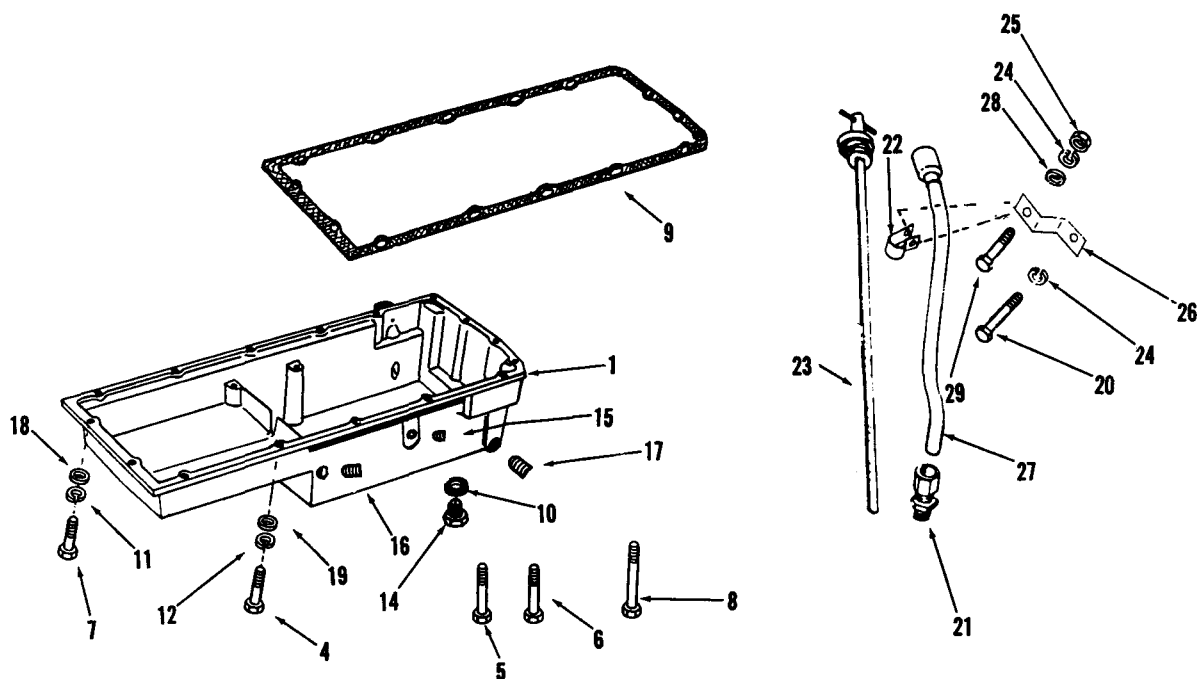
PARTS INDENTED ARE INCLUDED IN THE PART UNDER WHICH THEY ARE INDENTED



ENGINE APPLICATION AUTOMOTIVE ☒ B - OFF-HIGHWAY C - CONSTRUCTION & INDUSTRIAL P - INDUSTRIAL POWER

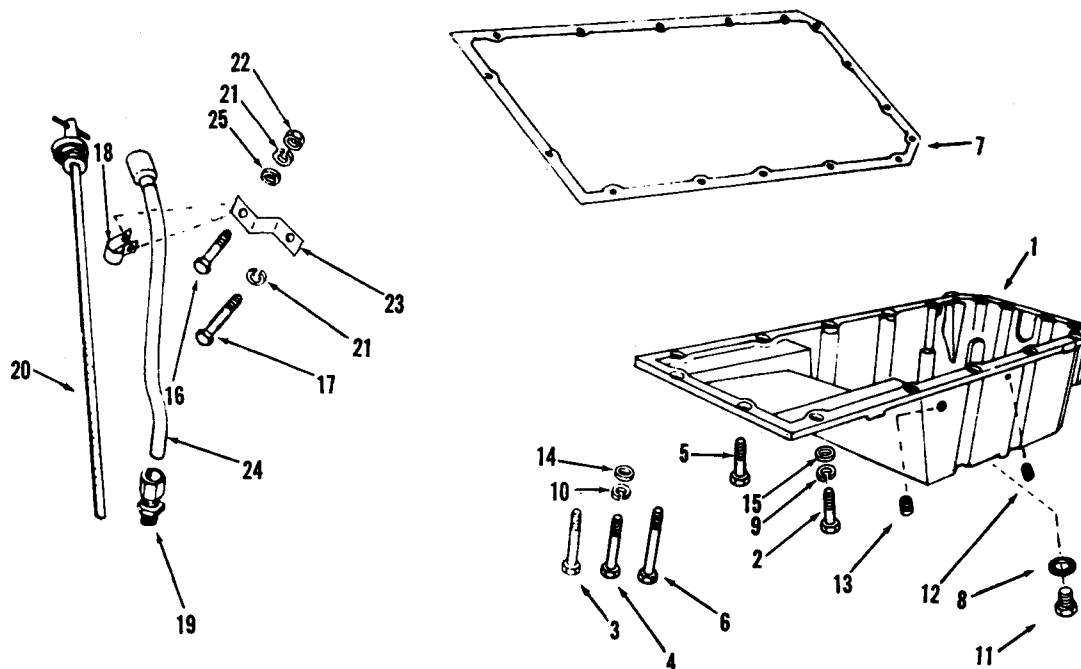
PART NUMBER	PART NAME	NO. REQ'D.	REF. NO.	PART NUMBER	PART NAME	NO. REQ'D.	REF. NO.
FRONT SUMP OIL PAN				REAR SUMP OIL PAN			
175702	Pan, oil	1	1	175729	Pan, oil	1	18
108707	Capscrew (3/8"-16 x 1-1/2")	2	2	S-199-A	Capscrew (3/8"-16 x 4")	2	3
S-199-A	Capscrew (3/8"-16 x 4")	2	3	S-103-D	Capscrew (3/8"-16 x 1-1/4")	8	4
S-103-D	Capscrew (3/8"-16 x 1-1/4")	6	4	S-124-C	Capscrew (5/16"-18 x 4")	2	5
S-124-C	Capscrew (5/16"-18 x 4")	2	5	S-119	Capscrew (5/16"-18 x 1-1/4")	2	6
S-119	Capscrew (5/16"-18 x 1-1/4")	2	6	550389	Capscrew (5/16"-18 x 5-7/8")	2	7
550389	Capscrew (5/16"-18 x 5-1/8")	2	7	175727	Gasket, oil pan	1	8
175727	Gasket, oil pan	1	8	163087	Gasket, drain plug	1	9
163087	Gasket, drain plug	1	9	553015	Plug, oil drain	1	12
S-605	Lockwasher (5/16")	6	10	S-908	Plug, pipe	1	15
S-604	Lockwasher (3/8")	10	11	S-605	Lockwasher	6	10
553015	Plug, oil pan drain	1	12	S-604	Lockwasher	10	11
S-915-A	Plug, pipe	1	13	S-915-A	Plug, pipe	1	13
S-911-B	Plug, pipe	1	14	S-911-B	Plug, pipe	1	14
S-908	Plug, pipe	1	15	S-602	Washer, plain (13/32")	10	16
S-602	Washer, plain (13/32")	10	16	S-626	Washer, plain (11/32")	6	17
S-626	Washer, plain (11/32")	6	17				
DIPSTICK AND TUBE				DIPSTICK AND TUBE			
550171	Bracket, tube	1		168979	Bracket, oil gauge tube	1	19
S-121	Capscrew, bracket (1/4"-28 x 5/8")	1		S-188-C	Capscrew (1/4"-20 x 1/2")	1	20
163759	Connector, dipstick tube	1	23	108707	Capscrew (3/8"-16 x 1-1/2")	1	21
552142	Dipstick, oil level			200064	Clamp, tube	1	22
	(Unmarked—mark as required)			163759	Connector, tube	1	23
S-600	Lockwasher (1/4")	1	24	551186	Dipstick, oil level	1	24
S-270	Nut (1/4")	1		S-600	Lockwasher (1/4")	1	25
550310	Tube, dipstick	1	26	168978	Tube, dipstick	1	26
				S-602	Washer, plain (13/32")	1	27
				S-631	Washer, plain (9/32")	1	28

PARTS INDENTED ARE INCLUDED IN THE PART UNDER WHICH THEY ARE INDENTED



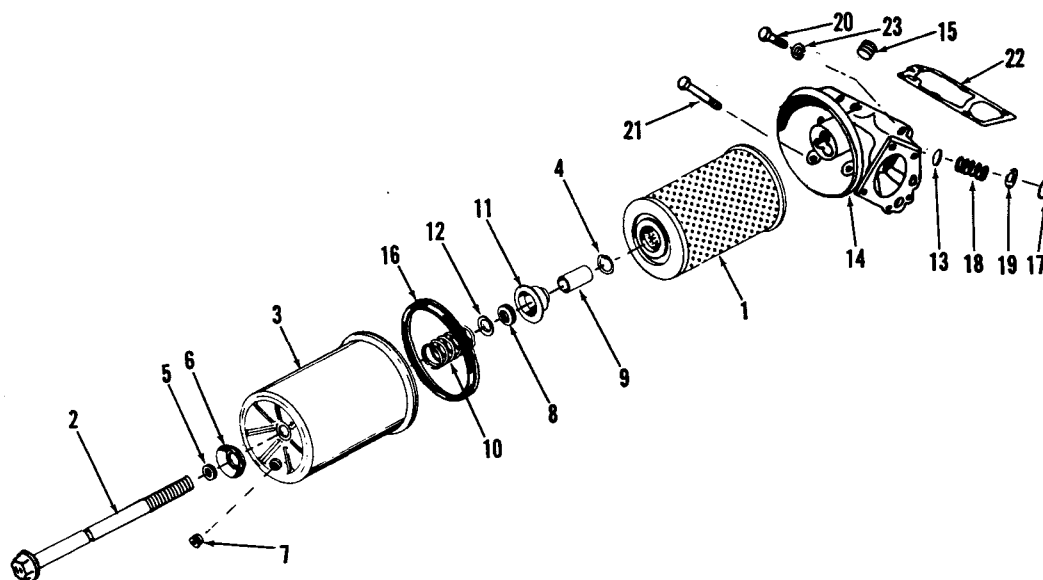
ENGINE APPLICATION		AUTOMOTIVE		B - OFF-HIGHWAY		C - CONSTRUCTION & INDUSTRIAL		P - INDUSTRIAL POWER	
PART NUMBER	PART NAME	NO. REQ'D.	REF. NO.	PART NUMBER	PART NAME	NO. REQ'D.	REF. NO.		
	OIL PAN				DIPSTICK AND TUBE				
	C Application			S-188-C	Capscrew (1/4''-20 x 1/2'')	1	29		
				108707	Capscrew (3/8''-16 x 1 1/2'')	1	20		
185556	Pan, oil	1	1	163759	Connector	1	21		
185557	Baffle, oil pan	1	2	200064	Clamp	1	22		
S-110	Capscrew, baffle	4	3	196000	Dipstick, oil level	1	23		
S-103-D	Capscrew (3/8''-16 x 1-1/4'')	8	4	S-600	Lockwasher (1/4'')	1	24		
S-199-A	Capscrew (3/8''-16 x 4'')	2	5	S-223	Nut	1	25		
S-124-C	Capscrew (5/16''-18 x 4'')	2	6	172036	Support, oil gauge tube	1	26		
S-119	Capscrew (5/16''-18 x 1-1/4'')	2	7	171634	Tube, dipstick	1	27		
550389	Capscrew (5/16''-18 x 5-7/8'')	2	8	S-602	Washer, plain	1	28		
175727	Gasket, oil pan	1	9	S-631	Washer, plain (9/32'')	1			
163087	Gasket, oil drain	1	10						
S-605	Lockwasher (5/16'')	6	11						
S-604	Lockwasher (3/8'')	10	12						
117559	Lockplate, baffle	4	13						
553015	Plug, oil drain	1	14						
S-911-B	Plug, pipe	1	15						
S-908	Plug, pipe	1	16						
S-915-A	Plug, pipe	1	17						
S-602	Washer, plain (13/32'')	10	18						
S-626	Washer, plain (11/32'')	6	19						

PARTS INDENTED ARE INCLUDED IN THE PART UNDER WHICH THEY ARE INDENTED



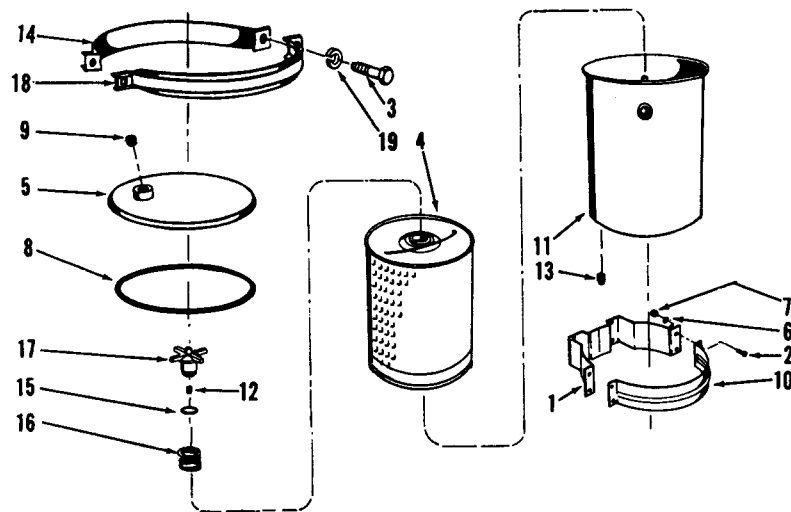
ENGINE APPLICATION		AUTOMOTIVE		B - OFF-HIGHWAY		C - CONSTRUCTION & INDUSTRIAL		P - INDUSTRIAL POWER		X
PART NUMBER	PART NAME	NO. REQ'D.	REF. NO.	PART NUMBER	PART NAME	NO. REQ'D.	REF. NO.			
	OIL PAN				DIPSTICK AND TUBE					
	P Application			S-188-C	Capscrew (1/4"-20 x 1/2")	1	16			
				108707	Capscrew (3/8"-16 x 1 1/2")	1	17			
189230	Pan, oil	1	1	200064	Clamp	1	18			
S-103-D	Capscrew (3/8"-16 x 1 1/4")	8	2	163759	Connection, dipstick tube	1	19			
S-199-A	Capscrew (3/8"-16 x 4")	2	3	551775	Dipstick	1	20			
S-124-C	Capscrew (5/16"-18 x 4")	2	4	S-600	Lockwasher (1/4")	1	21			
S-119	Capscrew (5/16"-18 x 1 1/4")	2	5	168979	Support, oil gauge tube	1	23			
550389	Capscrew (5/16"-18 x 5 7/8")	2	6	171634	Tube, dipstick	1	24			
175727	Gasket	1	7	S-602	Washer, plain (13/32")	1	25			
163087	Gasket, oil drain	1	8	S-631	Washer, plain (9/32")	1				
S-604	Lockwasher (3/8")	10	9							
S-605	Lockwasher (5/16")	6	10							
553015	Plug, oil drain	1	11							
S-911-B	Plug, pipe	1	12							
S-908	Plug, pipe	1	13							
S-602	Washer, plain (13/32")	10	14							
S-626	Washer, plain (11/32")	6	15							

PARTS INDENTED ARE INCLUDED IN THE PART UNDER WHICH THEY ARE INDENTED



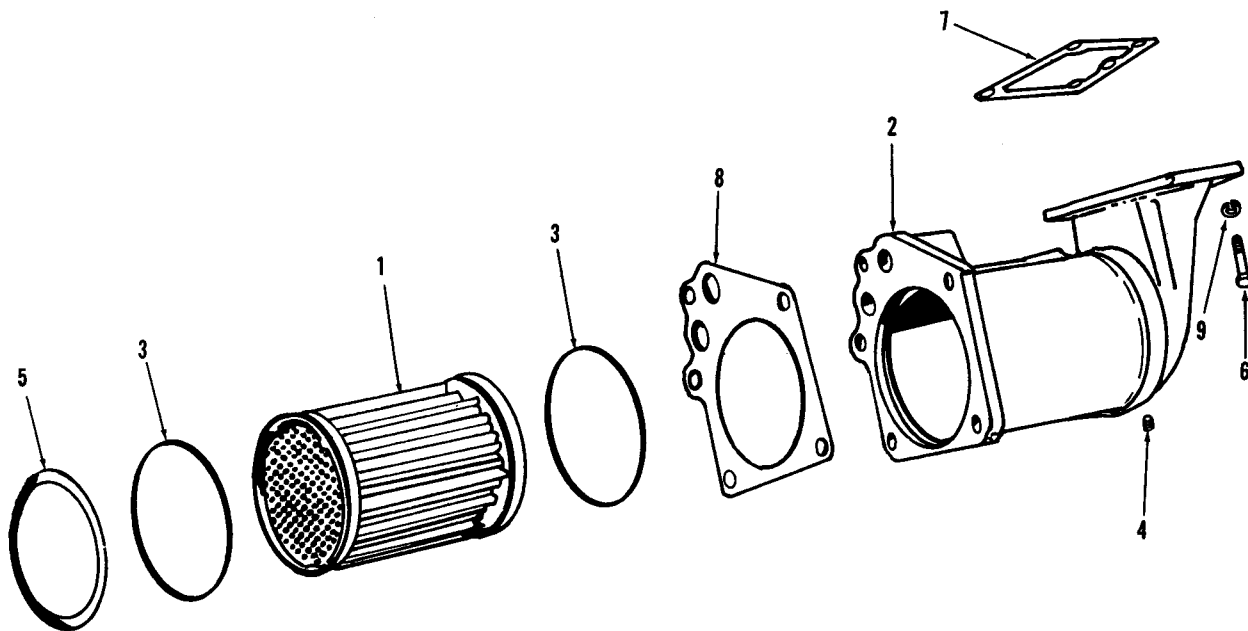
ENGINE APPLICATION		AUTOMOTIVE		B - OFF-HIGHWAY		C - CONSTRUCTION & INDUSTRIAL		P - INDUSTRIAL POWER	
		X				X		X	
PART NUMBER	PART NAME	NO. REQ'D.	REF. NO.	PART NUMBER	PART NAME	NO. REQ'D.	REF. NO.		
	LUBRICATING OIL FILTER				MOUNTING PARTS				
AR-60253	Filter, lubricating oil	1		108707	Capscrew (3/8''-16 x 1 1/2'')	5	20		
LF-613	Cartridge	1	1	S-126	Capscrew (3/8''-16 x 2 1/2'')	2	21		
551680	Shell assembly, filter	1		181728	Gasket	1	22		
551690	Bolt, center	1	2	S-604	Lockwasher	7	23		
551681	Can, filter	1	3						
551688	Circlip	1	4						
551158	Gasket, bolt	1	5						
551682	Plate	1	6						
553364	Plug, pipe	1	7						
551685	Seal, bolt	1	8						
551687	Spacer	1	9						
551683	Spring, cartridge	1	10						
551686	Support, cartridge	1	11						
551684	Washer, bolt seal	1	12						
200819	Disc, by-pass	1	13						
175623	Head, filter	1	14						
S-908	Plug, pipe	1	15						
193302	Ring, sealing, head	1	16						
156676	Ring, snap disc	1	17						
188476	Spring, by-pass	1	18						
S-689	Washer, disc	1	19						

PARTS INDENTED ARE INCLUDED IN THE PART UNDER WHICH THEY ARE INDENTED



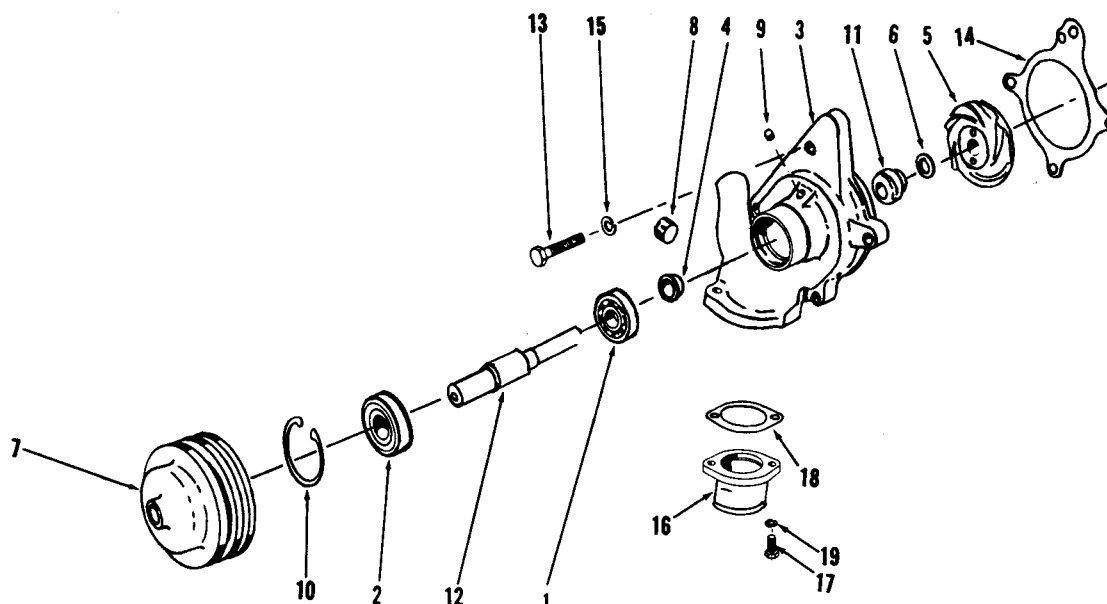
ENGINE APPLICATION		AUTOMOTIVE		B - OFF-HIGHWAY		C - CONSTRUCTION & INDUSTRIAL		X	P - INDUSTRIAL POWER	
PART NUMBER	PART NAME	NO. REQ'D.	REF. NO.	PART NUMBER	PART NAME	NO. REQ'D.	REF. NO.			
	LUBRICATING OIL BY-PASS FILTER									
159707	Filter, lubricating oil by-pass	1								
145664	Bracket, filter	2	1							
70188	Capscrew, coupling half	8	2							
70449	Capscrew	2	3							
LF-500	Cartridge	1	4							
150038	Coupling, half with nuts	1	14							
150039	Coupling half, cover	1	18							
159667	Cover	1	5							
70189	Lockwasher, bracket	8	6							
70194	Lockwasher, coupling half	2	19							
70299	Nut, mounting bracket	8	7							
164159	"O" ring, cover	1	8							
S-908	Plug, cover	1	9							
145665	Strap, mounting	2	10							
252056	Shell, filter	1	11							
157151	Decal, filter	1								
131911	Orifice, plug (no. 6)	1	12							
S-908	Plug, drain	1	13							
252138	Support, upper	1								
116029	"O" ring, support	1	15							
150037	Spring, hold down	1	16							
252055	Support, upper	1	17							

PARTS INDENTED ARE INCLUDED IN THE PART UNDER WHICH THEY ARE INDENTED



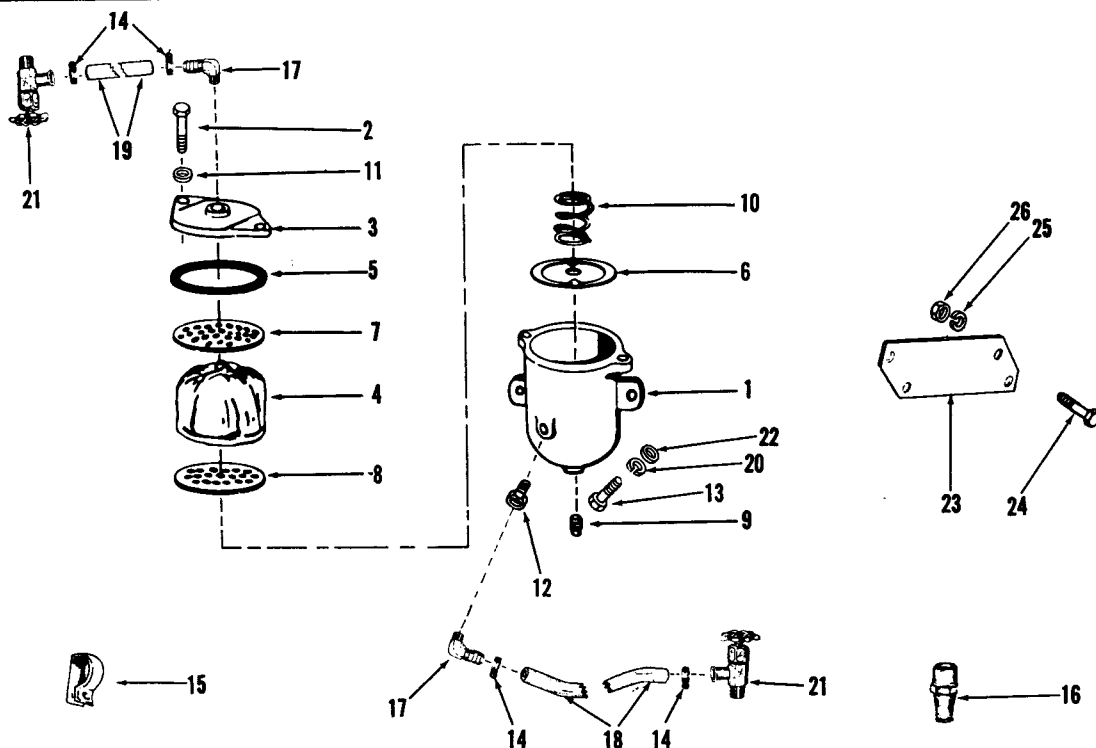
ENGINE APPLICATION		AUTOMOTIVE		X	B - OFF-HIGHWAY		C - CONSTRUCTION & INDUSTRIAL		X	P - INDUSTRIAL POWER		X
PART NUMBER	PART NAME	NO. REQ'D.	REF. NO.		PART NUMBER	PART NAME	NO. REQ'D.	REF. NO.				
	LUBRICATING OIL COOLER											
BM-91604	Cooler, lubricating oil	1										
110848	Element	1	1									
166401	Housing	1	2									
148293	"O" ring	2	3									
S-910-B	Plug, pipe	1	4									
110827	Retainer, element	1	5									
	MOUNTING PARTS											
S-103-D	Capscrew, mounting	9	6									
165153	Gasket, housing to block	1	7									
166407	Gasket, cooler to filter	1	8									
S-604	Lockwasher	9	9									

PARTS INDENTED ARE INCLUDED IN THE PART UNDER WHICH THEY ARE INDENTED



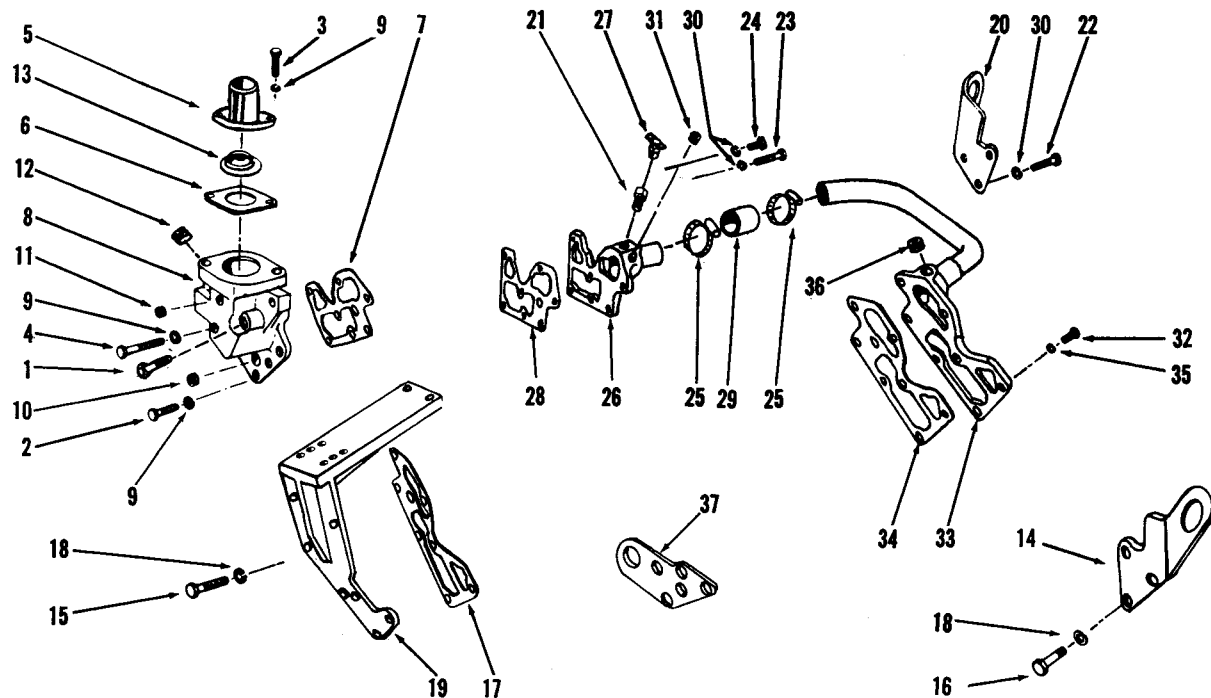
ENGINE APPLICATION		AUTOMOTIVE		X	B - OFF-HIGHWAY		C - CONSTRUCTION & INDUSTRIAL		X	P - INDUSTRIAL POWER		X
PART NUMBER	PART NAME	NO. REQ'D.	REF. NO.	PART NUMBER	PART NAME	NO. REQ'D.	REF. NO.					
WATER PUMP				WATER PUMP REPAIR KIT								
AR-60679	Pump, water	1		AR-60698	Kit, water pump repair	1						
552335	Bearing, ball	1	1	552335	Bearing, ball	1	1					
552377	Bearing, ball	1	2	552377	Bearing, ball	1	2					
552332	Body, water pump	1	3	BM-96156	Impeller, water pump	1	5					
107776	Flinger, water pump	1	4	170895	Seal, water pump	1	11					
BM-96156	Impeller, water pump (200515)	1	5	169042	Gasket, water pump mounting	1	14					
200509	Seal, seat	1	6	107776	Flinger, water pump	1	4					
170783	Pulley, water pump	1	7									
S-995	Plug, pipe (3/4")	1	8		WATER INLET CONNECTION							
S-915-A	Plug, pipe	1										
S-911-B	Plug, pipe (1/8")	1	9	68270	Connection, water	1	16					
160586	Ring, retaining	1	10	S-112	Capscrew, connection	2	17					
170895	Seal, water pump	1	11	9221	Gasket, connection	1	18					
552334	Shaft, water pump	1	12	S-604	Lockwasher	2	19					
MOUNTING PARTS												
108707	Capscrew, water pump to block	4	13									
169042	Gasket, water pump to block	1	14									
S-604	Lockwasher (3/8")	4	15									

PARTS INDENTED ARE INCLUDED IN THE PART UNDER WHICH THEY ARE INDENTED



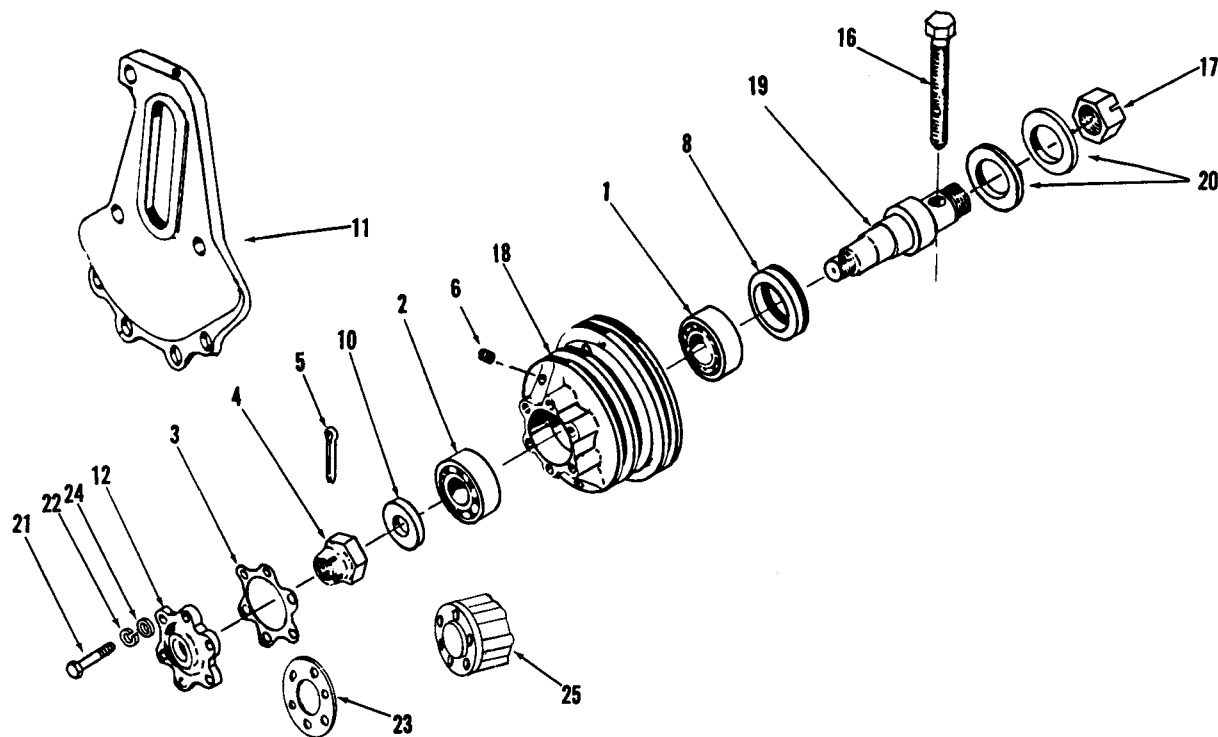
ENGINE APPLICATION		AUTOMOTIVE		X	B - OFF-HIGHWAY			C - CONSTRUCTION & INDUSTRIAL		X	P - INDUSTRIAL POWER		X
PART NUMBER	PART NAME	NO. REQ'D.	REF. NO.		PART NUMBER	PART NAME	NO. REQ'D.	REF. NO.					
	CORROSION RESISTOR					MOUNTING PARTS							
176945	Corrosion resistor assembly	1			S-921-D	Bushing, pipe, inlet (3/8")	1	12					
171638	Body	1	1		S-102	Capscrew (5/16"-18 x 1")	4	13					
70223	Bolt, cover to body (5/16"-18 x 1 1/4")	2	2		179904	Clamp, hose	4	14					
171639	Cover	1	3		550692	Clip, hose	2	15					
171645	Element (Use without permanent anti-freeze)	1	4		179902	Connection	1	16					
171644	Gasket	1	5		650390	Decal	1						
171642	Plate, sump	1	6		179903	Elbow	1	17					
171640	Plate, upper	1	7		179913	Hose	1	18					
171641	Plate, lower	1	8		179924	Hose	1	19					
139090	Plug, drain (1/4"N.P.T.F.)	1	9		S-605	Lockwasher (5/16")	2	20					
171643	Spring	1	10		179901	Valve, shut-off	2	21					
70233	Washer, plain (11/32")	2	11		S-626	Washer, plain (11/32")	2	22					
					188903	Bracket	1	23					
					S-106-A	Capscrew (5/16"-18 x 1 3/4")	2	24					
					S-605	Lockwasher (5/16")	2	25					
					S-221	Nut (5/16")	2	26					

PARTS INDENTED ARE INCLUDED IN THE PART UNDER WHICH THEY ARE INDENTED

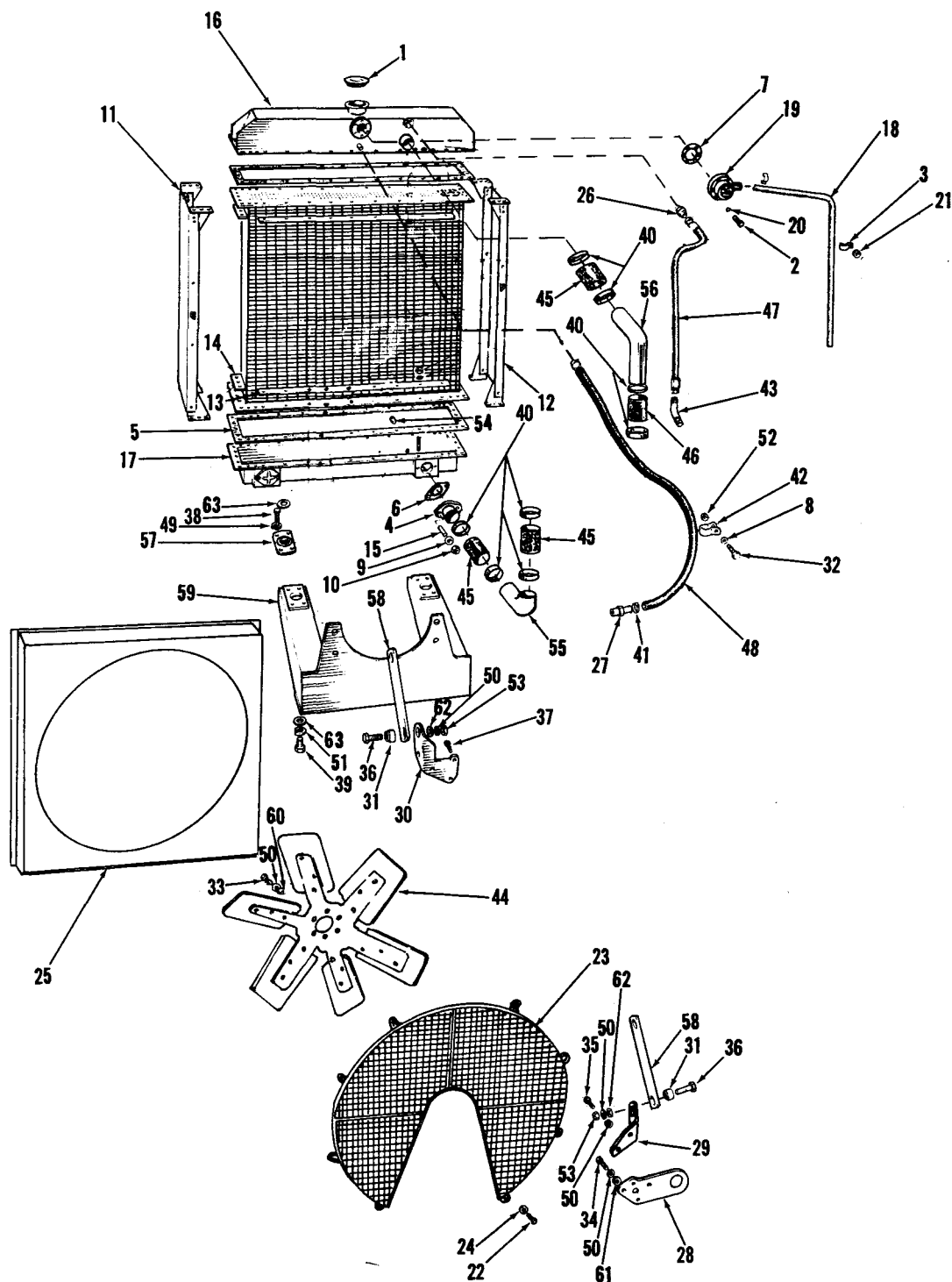


ENGINE APPLICATION		AUTOMOTIVE		X	B - OFF-HIGHWAY		C - CONSTRUCTION & INDUSTRIAL		X	P - INDUSTRIAL POWER		X
PART NUMBER	PART NAME	NO. REQ'D.	REF. NO.	PART NUMBER		PART NAME	NO. REQ'D.	REF. NO.				
	THERMOSTAT HOUSING					P Application						
	RIGHT BANK FRONT			S-103-D		Capscrew (3/8"-16 x 1 1/4")	7	15				
	Auto, C Application			157290		Gasket	1	7				
				S-604		Lockwasher (3/8")	7	18				
S-102-D	Capscrew, housing (3/8"-16 x 3")	1	1	172017		Support, alternator bracket	1	19				
S-103-D	Capscrew, housing	5	2									
S-112	Capscrew, connection	2	3									
S-199-A	Capscrew, housing (3/8"-16 x 4")	1	4									
172031	Connection, water outlet	1	5									
140329	Gasket, connection	1	6	168919		Bracket, lifting	1	20				
157290	Gasket, housing to head	1	7	S-929-B		Bushing	1	21				
172032	Housing, thermostat	1	8	S-103-D		Capscrew (3/8"-16 x 1 1/4")	4	22				
S-604	Lockwasher (3/8")	7	9	S-104		Capscrew (3/8"-16 x 2 1/4")	1	23				
S-908	Plug, pipe (3/8")	1	10	S-112		Capscrew (3/8"-16 x 1")	9	24				
S-911-B	Plug, pipe (1/8")	1	11	550547		Clamp, hose	2	25				
S-915-A	Plug, pipe (1/2")	2	12	BM-96631		Crossover, water	1	26				
163981	Thermostat	1	13	S-962-E		Drain cock	1	27				
				157290		Gasket, crossover	2	28				
	P Application			178804		Hose	1	29				
				S-604		Lockwasher (3/8")	14	30				
	Same as above except:			S-908		Plug, pipe (3/8")	2	31				
ADD:												
160216	Connection, water outlet	1	5	S-112		Capscrew, crossover (3/8"-16 x 1")	7	32				
650864	Bracket, lifting	1	37	BM-96630		Crossover, water	1	33				
				157290		Gasket, crossover	1	34				
OMIT:				S-604		Lockwasher (3/8")	7	35				
172031	Connection, water outlet	1	5	S-908		Plug, pipe (3/8")	1	36				
	LEFT BANK FRONT					P Applications						
	Auto, C Application			ADD:		Same as above except:						
168919	Bracket, lifting	1	14	650864		Bracket, lifting (L.B.)	1	37				
S-103-D	Capscrew, plate to head	4	15	S-103-D		Capscrew, lifting bracket	4	32				
108707	Capscrew, bracket	3	16									
157290	Gasket, plate to head	1	17	OMIT:								
S-604	Lockwasher (3/8")	4	18	S-112		Capscrew (3/8"-16 x 1")	4	32				
172017	Support, alternator bracket	1	19									

PARTS INDENTED ARE INCLUDED IN THE PART UNDER WHICH THEY ARE INDENTED



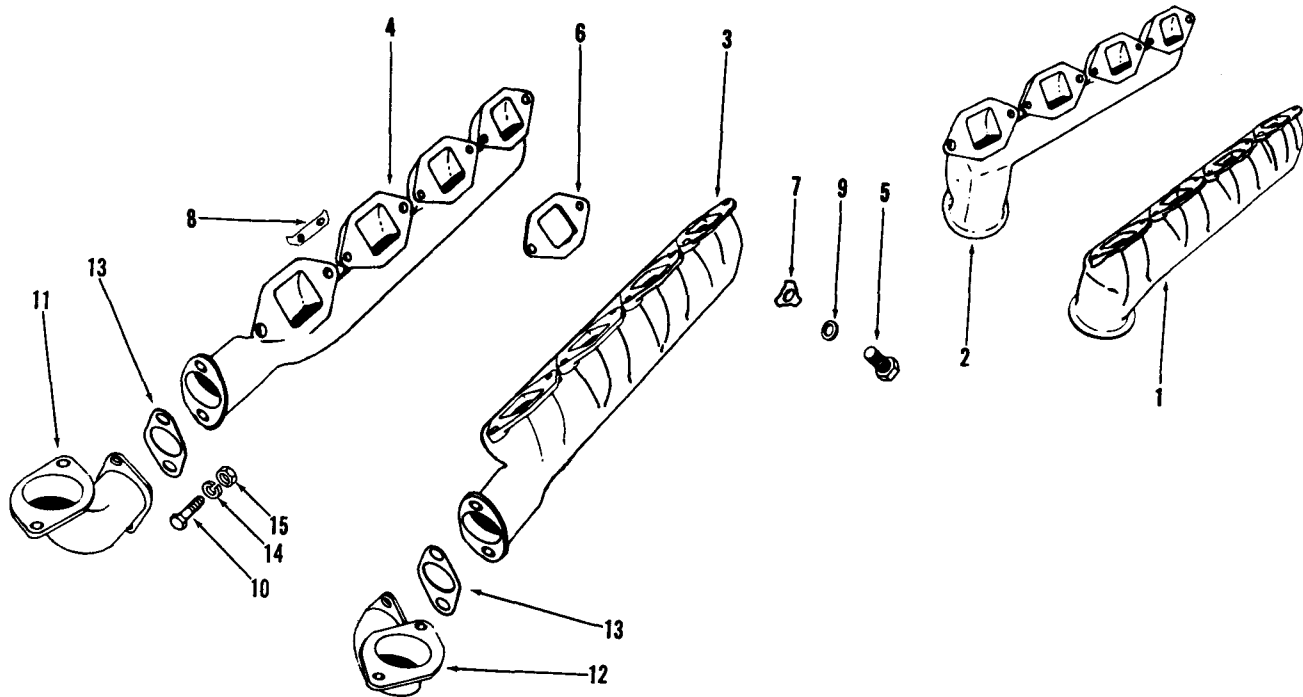
ENGINE APPLICATION		AUTOMOTIVE		X		B - OFF-HIGHWAY		C - CONSTRUCTION & INDUSTRIAL		X		P - INDUSTRIAL POWER		X	
PART NUMBER		PART NAME		NO. REQ'D.		REF. NO.		PART NUMBER		PART NAME		NO. REQ'D.		REF. NO.	
		STANDARD FAN MOUNT								MOUNTING PARTS					
S-117	Capscrew, fan to crankshaft	6				178685		Belt				1			
S-604	Lockwasher, fan to crankshaft	6				108707		Capscrew, fan mounting				6		21	
						S-604		Lockwasher				6		22	
						119221		Spacer, fan				1		23	
						S-602		Washer, plain				15		24	
		HIGH FAN MOUNT													
		Auto, C Application						P Application							
BM-94480	Hub, fan	1						Same as above except:							
143116	Bearing, tapered roller	1		1											
116759	Bearing, tapered roller	1		2		ADD:									
143108	Gasket	1		3											
146650	Locknut, slotted	1		4		S-141		Capscrew, fan mounting				6		21	
67532	Locknut, Marsden	1		17		152237		Pilot, fan				1		12	
S-510	Pin, cotter	1		5		67012-1		Spacer, fan				1		25	
173223	Pulley, fan hub	1		18		70540		Spacer, fan				1			
S-911-B	Plug, pipe	2		6											
106276	Seal, oil	1		8		OMIT:									
146647	Shaft, fan hub	1		19											
146651	Washer, clamp	1		10		108707		Capscrew				6		21	
67526	Washer, clamp	2		20		147209		Pilot fan				1		12	
182697	Bracket, camshaft cover and fan	1		11											
147209	Pilot, fan	1		12											
182706	Screw, adjusting	1		16											



RADIATOR AND MOUNTING PARTS

ENGINE APPLICATION		AUTOMOTIVE		B - OFF-HIGHWAY		C - CONSTRUCTION & INDUSTRIAL		P - INDUSTRIAL POWER		X	
PART NUMBER	PART NAME	NO. REQ'D.	REF. NO.	PART NUMBER	PART NAME	NO. REQ'D.	REF. NO.				
	RADIATOR				MOUNTING PARTS						
	P Application Only			116935	Adapter, thermostat to radiator	1	26				
				650418	Adapter, radiator to water pump	1	27				
AR-73455	Radiator and shroud	1		650864	Bracket, engine lifting	1	28				
650399	Radiator assembly	1		650866	Bracket, radiator support	1	29				
650980	Cap, radiator filler	1	1	650255	Bracket, engine lift and support	1	30				
132049	Capscrew, relief valve	6	2	650429	Bush, radiator stay	4	31				
650987	Clamp, overflow tube	2	3	S-114	Capscrew, clip	1	32				
650981	Connection	1	4	S-141	Capscrew, fan	6	33				
650996	Gasket, core to plate	2	5	S-120	Capscrew, rod support to left bracket	2	34				
650982	Gasket, connection	2	6		Capscrew, lifting bracket	2	35				
650985	Gasket, relief valve	2	7	108707	Capscrew, radiator stay mounting	4	36				
650988	Lockwasher (1/4" shakeproof)	2	8	S-165	Capscrew, lifting bracket	3	37				
650983	Lockwasher (3/8" shakeproof)	4	9	S-103-D	Capscrew, vibration mounting	8	38				
S-205	Nut, water connection	4	10	S-115-C	Capscrew, radiator base mounting	2	39				
650991	Panel, side (L.H.)	1	11	S-144	Clamp, hose radiator to pump	8	40				
650992	Panel, side (R.H.)	1	12	43828-D	Clamp	2	41				
650994	Plate, stiffening (long)	4	13	43828-A	Clip, hose	2	42				
650995	Plate, stiffening (short)	4	14	67949	Elbow, thermostat to radiator	1	43				
70768	Stud, water connection	4	15	116936	Fan	1	44				
650989	Tank, top subassembly	1	16	651069	Hose, radiator to water pump	3	45				
650990	Tank, bottom subassembly	1	17	69972	Hose, water pump	1	46				
650986	Tube, overflow	1	18	110980	Hose, thermostat to radiator	1	47				
650984	Valve, relief	1	19	AS0502660SS	Hose, radiator to water pump	1	48				
650993	Valve, relief inlet pipe	1		138381	Lockwasher (1/4")	9	49				
120684	Washer, relief valve	6	20	S-600	Lockwasher (3/8")	4	50				
S-600	Lockwasher (1/4")	2	21	S-604	Lockwasher (5/8")	2	51				
S-115-C	Capscrew	8		S-603	Nut, clip	1	52				
S-167-A	Capscrew, fan guard mounting	8	22	S-270	Nut, radiator stay mounting	4	53				
650406	Guard, fan	1	23	S-205	Plug, radiator drain	1	54				
S-600	Lockwasher, fan guard	8	24	S-908	Pipe, radiator to water pump	1	55				
650404	Shroud, fan	1	25	650384	Pipe, thermostat housing to head	1	56				
S-691	Washer, toothlock	8		650385	Rubber, radiator mounting	2	57				
				650387	Stay, radiator	2	58				
				650434	Support, front engine	1	59				
				650368	Washer, plain, fan	6	60				
				S-602	Washer, plain, lifting bracket	3	61				
				146651	Washer, plain	8	62				
				146161	Washer, plain, radiator base mounting	4	63				
				S-658							

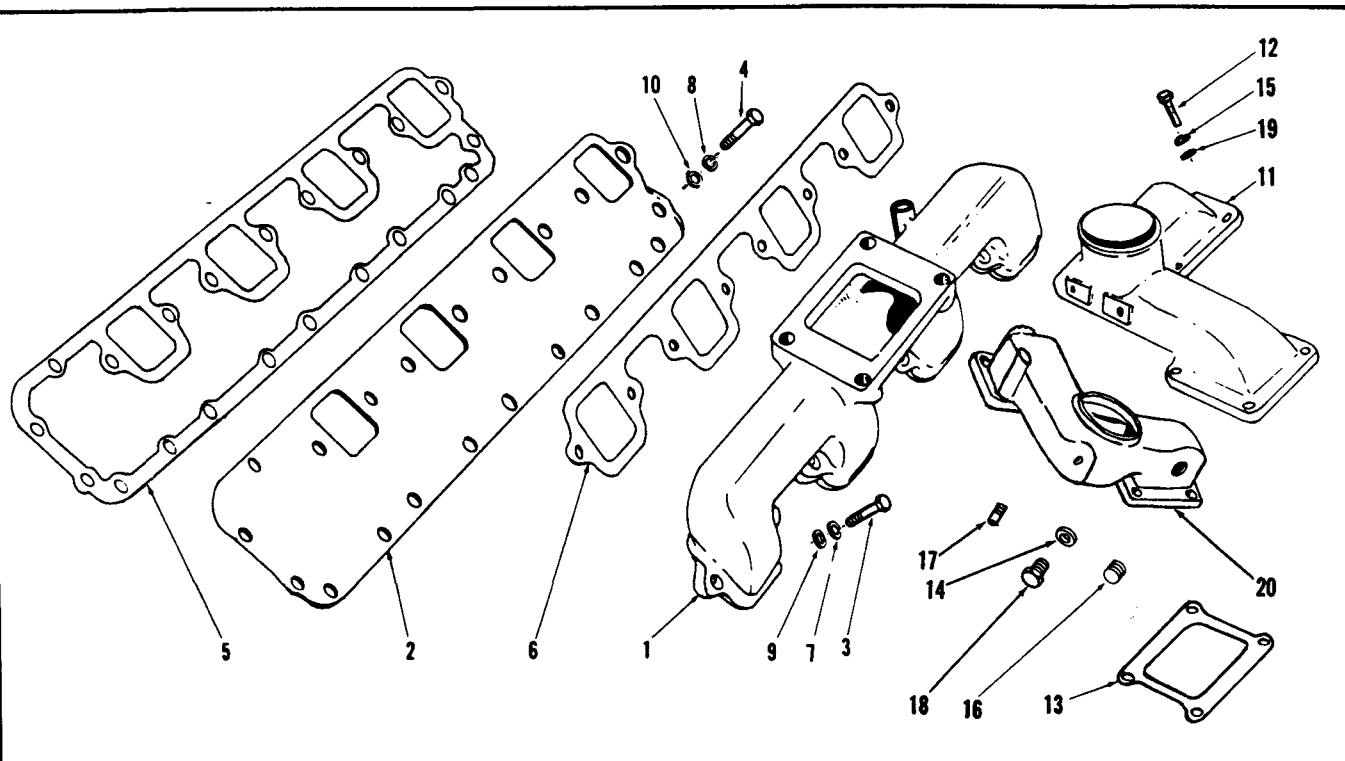
PARTS INDENTED ARE INCLUDED IN THE PART UNDER WHICH THEY ARE INDENTED



ENGINE APPLICATION	AUTOMOTIVE	X	B - OFF-HIGHWAY	C - CONSTRUCTION & INDUSTRIAL	X	P - INDUSTRIAL POWER	X
--------------------	------------	---	-----------------	-------------------------------	---	----------------------	---

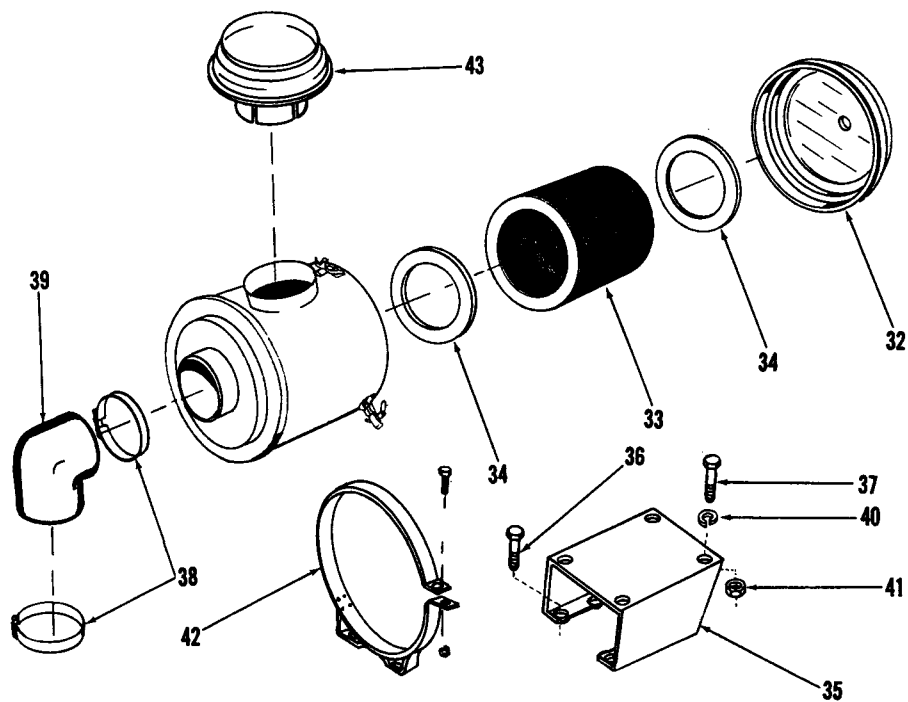
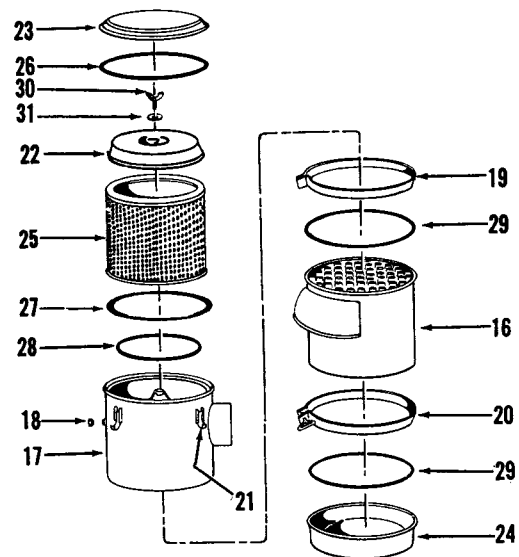
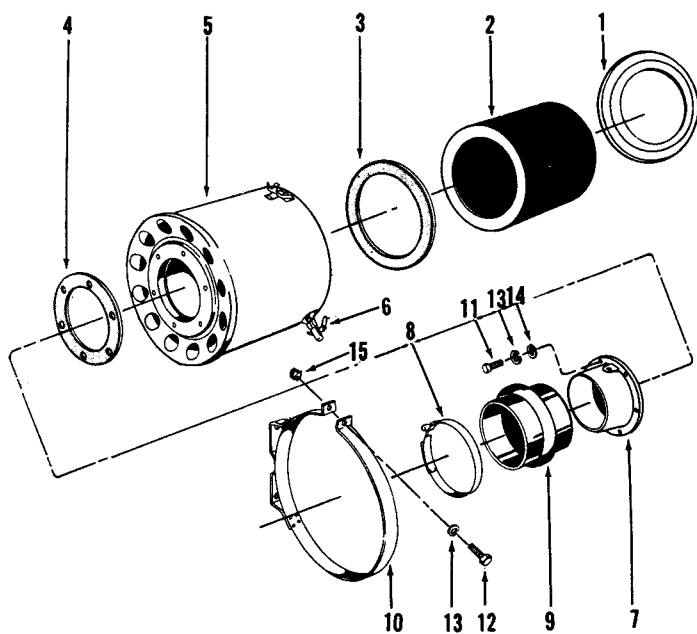
PART NUMBER	PART NAME	NO. REQ'D.	REF. NO.	PART NUMBER	PART NAME	NO. REQ'D.	REF. NO.
EXHAUST MANIFOLD							
161488	Manifold, exhaust L.B. (Auto)	1	1				
161489	Manifold, exhaust R.B. (Auto)	1	2				
173139	Manifold, exhaust R.B. (C and P)	1	3				
173140	Manifold, exhaust L.B. (C and P)	1	4				
MOUNTING PARTS							
Auto, C Application							
S-172-B	Capscrew, manifold	16	5				
168003	Gasket, manifold	8	6				
550720	Lockplate	4	7				
551108	Lockplate	6	8				
S-602	Washer	4	9				
P Application							
Same as above except:							
ADD:							
108707	Capscrew (3/8"-16 x 1-1/2")	4	10				
650133	Elbow, exhaust (L.B.)	1	11				
650134	Elbow, exhaust (R.B.)	1	12				
168004	Gasket, elbow to manifold	2	13				
S-604	Lockwasher (3/8")	4	14				
S-254	Nut	4	15				

PARTS INDENTED ARE INCLUDED IN THE PART UNDER WHICH THEY ARE INDENTED



ENGINE APPLICATION		AUTOMOTIVE		X		B - OFF-HIGHWAY		C - CONSTRUCTION & INDUSTRIAL		X		P - INDUSTRIAL POWER		X	
PART NUMBER		PART NAME		NO. REQ'D.		REF. NO.		PART NUMBER		PART NAME		NO. REQ'D.		REF. NO.	
		AIR INTAKE MANIFOLD								CONNECTION, AIR CROSSOVER					
168067	Manifold, air intake	2	1	168076	Connection, air crossover	1	11								
159267	Plate, push rod cover	2	2												
		MOUNTING PARTS								MOUNTING PARTS					
		Auto Application								Auto Application					
S-102	Capscrew, plate to block (Auto,C)	2													
S-174-B	Capscrew, manifold to plate	16	3	S-103-D	Capscrew, connection	8	12								
S-110	Capscrew, plate to block	24	4	168069	Gasket, connection	2	13								
157015	Gasket, plate	2	5	66292	Gasket, plug	2	14								
156996	Gasket, intake manifold	2	6	S-604	Lockwasher	8	15								
S-604	Lockwasher, manifold	16	7	S-911-B	Plug, pipe	1	16								
S-605	Lockwasher, plate	26	8	S-932-B	Nipple	1	17								
108976	Washer, plain, manifold	16	9	66030	Plug	2	18								
S-626	Washer, plain, manifold	26	10	S-602	Washer, plain	8	19								
										C, P Application					
										Same as above except:					

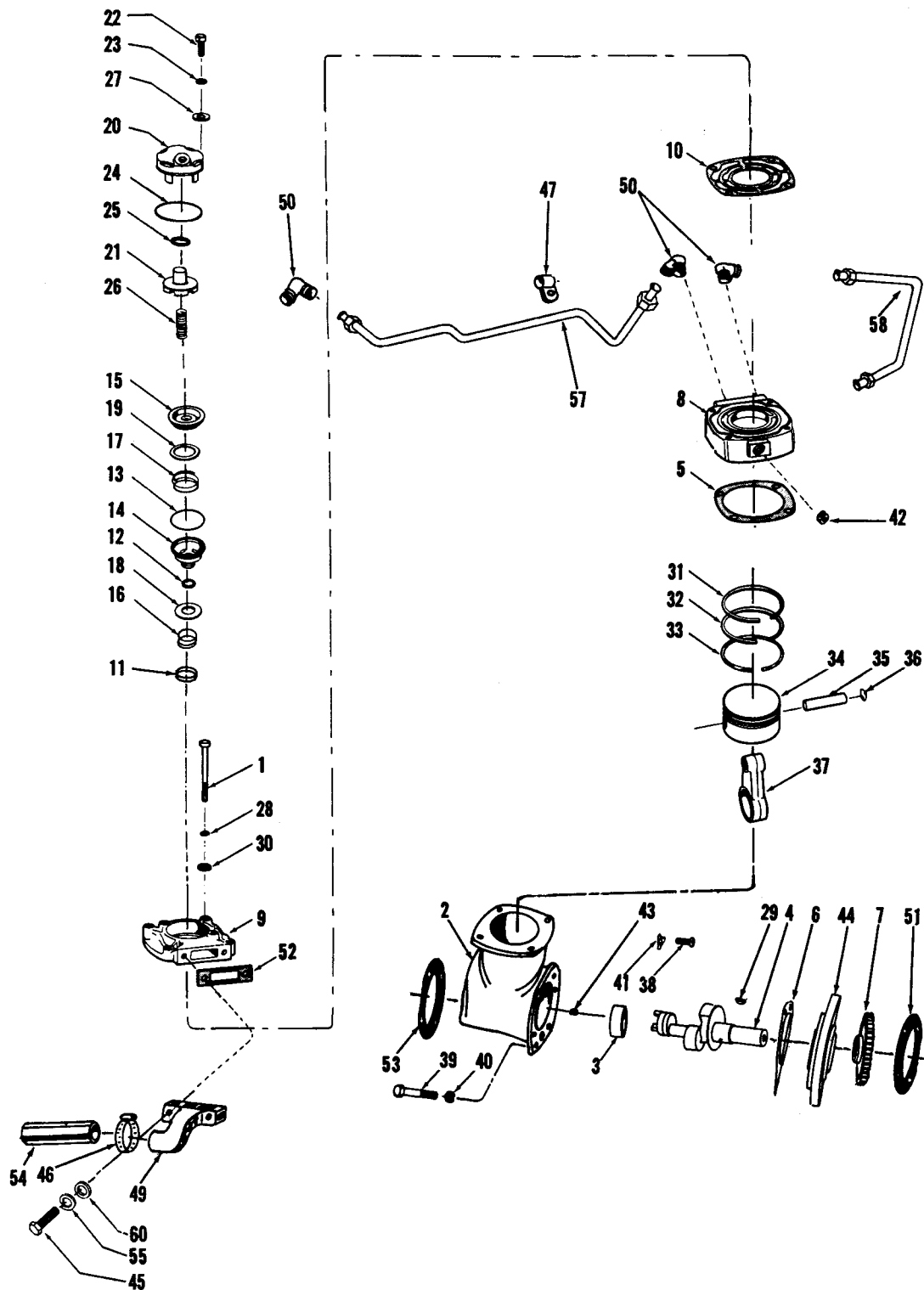
PARTS INDENTED ARE INCLUDED IN THE PART UNDER WHICH THEY ARE INDENTED



AIR CLEANER AND MOUNTING PARTS

ENGINE APPLICATION		AUTOMOTIVE		X	B - OFF-HIGHWAY		C - CONSTRUCTION & INDUSTRIAL		X	P - INDUSTRIAL POWER		X
PART NUMBER	PART NAME	NO. REQ'D.	REF. NO.		PART NUMBER	PART NAME	NO. REQ'D.	REF. NO.				
	AIR CLEANER					MOUNTING PARTS						
	Auto Application				S-111	Capscrew (5/16"-18 x 1-1/2")	4	12				
106835	Cleaner, air	1			S-605	Lockwasher (5/16")	4	13				
107125	Cover, shell	1	1		125740	Clamp, T bolt hose	4	8				
AF-252	Element assembly	1	2		103807	Hose	2	9				
107126	Gasket, element	1	3		S-221	Nut	4	15				
107127	Gasket, flange	1	4		5846	Strap, air cleaner	2	10				
107128	Shell, air cleaner	1	5			P Application						
122121	Spring, cover clamp	3	6		650051	Cleaner, air	1					
	MOUNTING PARTS				650056	Cover	1	32				
107105	Adapter, air cleaner	1	7		650055	Element	1	33				
125740	Clamp, hose	4	8		650057	Seal	2	34				
103807	Hose, air cleaner	2	9			MOUNTING PARTS						
107091	Strap, air cleaner	2	10		650665	Bracket, air cleaner	1	35				
S-115	Capscrew (5/16"-18 x 7/8")	6	11		108707	* Capscrew (3/8"-16 x 1-1/4")	4	36				
S-119	Capscrew (5/16"-18 x 1-1/4")	4	12		S-166	Capscrew (3/8"-24 x 1-1/8")	4	37				
S-605	Lockwasher (5/16")	10	13		125740	Clamp, T bolt	2	38				
S-626	Washer, plain	6	14		105312	Elbow, 90°	1	39				
S-221	Nut	4	15		S-604	Lockwasher (3/8")	4	40				
	Direct mounted Air Cleaner used with 176538 connection.				S-205	Nut	4	41				
					650041	Straps	2	42				
					650059	Hood, air cleaner	1	43				
209889	Cleaner	1				* Note: Remove (4) S-103-D capscrews from air crossover.						
169369	Bolt	1										
169391	Cover	1										
209890	Element	1										
169392	Gasket, bolt	1										
169390	Gasket, cleaner	1										
169367	Housing	1										
	C Application											
151607	Assembly, air cleaner	1										
151799	Body, lower	1	16									
151787	Body, upper	1	17									
150768	Cap, restriction	1	18									
151794	Clamp, body	1	19									
151805	Clamp, cup	1	20									
150767	Clip, cover	1	21									
150786	Cover, inner	1	22									
133748	Cover assembly	1	23									
150746	Cup assembly	1	24									
150749	Element	1	25									
151693	Gasket, cover	1	26									
150789	Gasket, inner cover	1	27									
151792	Gasket, element	1	28									
150460	Gasket, body and cup	2	29									
152792	Screw	1	30									
152793	Washer	1	31									

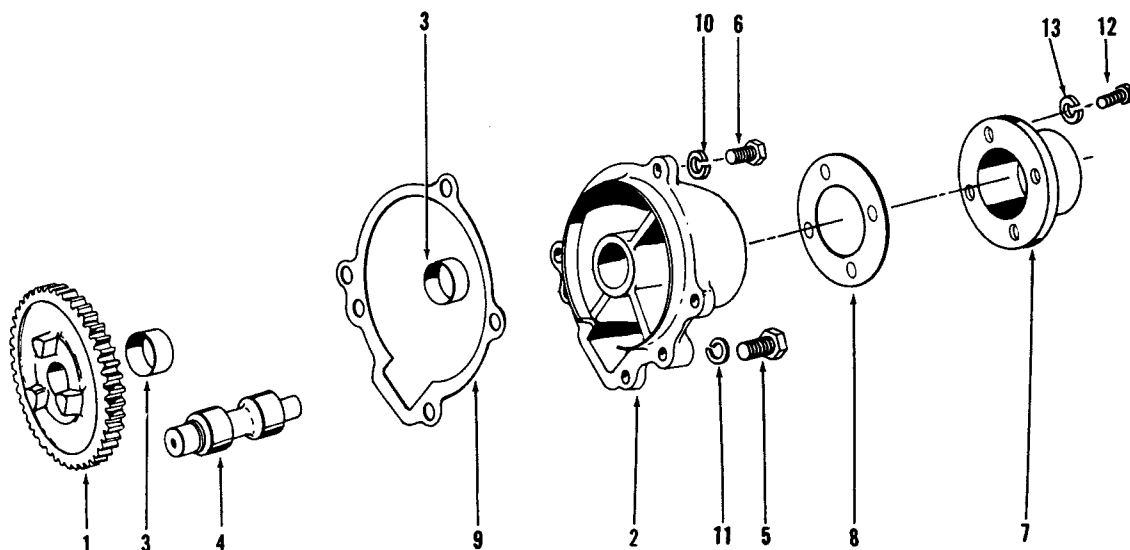
PARTS INDENTED ARE INCLUDED IN THE PART UNDER WHICH THEY ARE INDENTED



CUMMINS COMPACT AIR COMPRESSOR

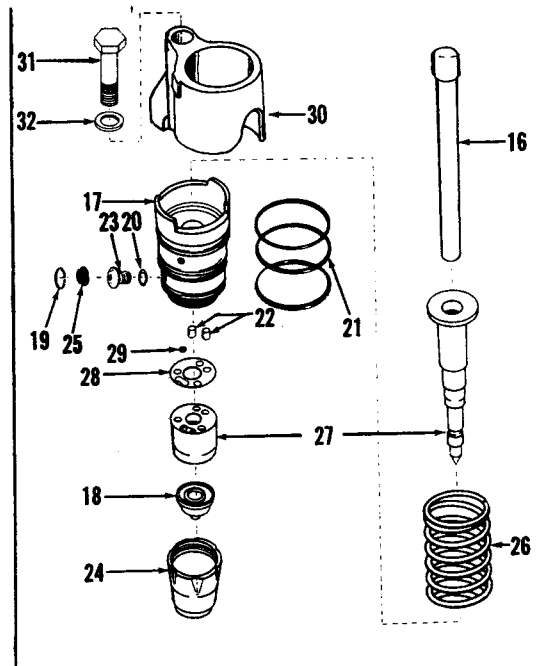
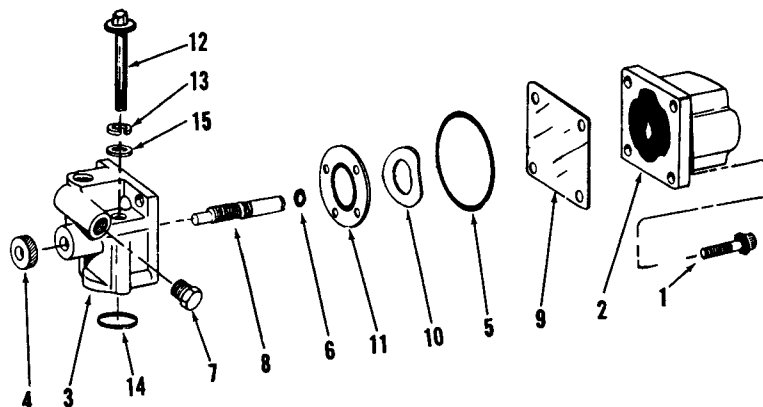
ENGINE APPLICATION		AUTOMOTIVE		X	B - OFF-HIGHWAY		C - CONSTRUCTION & INDUSTRIAL		P - INDUSTRIAL POWER	
PART NUMBER	PART NAME	NO. REQ'D.	REF. NO.	PART NUMBER	PART NAME	NO. REQ'D.	REF. NO.			
	AIR COMPRESSOR				MOUNTING PARTS					
AR-73582	Compressor, air	1		S-111	Capscrew, air connection	2	45			
S-155-A	Capscrew, head to crankcase	4	1	550788	Clamp, hose	2	46			
BM-98685	Crankcase, compressor (176025)	1	2	108722	Clamp, hose	1	47			
147610	Bushing, crankcase	1	3	S-1002-A	Connector, flexible hose	1	48			
176030	Crankshaft, compressor	1	4	194410	Connection, air	1	49			
154018	Gasket, head to crankcase	1	5	S-1005-A	Elbow, flexible hose	3	50			
176027	Gasket, support	1	6	167993	Gasket, support	1	51			
187639	Gear, compressor drive	1	7	157911	Gasket, air connection	1	52			
AR-03926	Head assembly	1		200817	Gasket, fuel pump to compressor	1	53			
179122	Head, air compressor	1	8	177217	Hose	1	54			
153964	Cover, air compressor head	1	9	S-605	Lockwasher	2	55			
154996	Gasket	1	10	S-920	Pipe, nipple	1	56			
183429	Wearplate	1	11	186226	Tube, water inlet	1	57			
AR-73075	Intake and exhaust valve assembly	1		189999	Tube, water outlet	1	58			
128085	"O" ring	1	12	126876	Tee, pipe	1	59			
128086	"O" ring	1	13	S-626	Washer, plain	2	60			
144714	Seat, exhaust valve	1	14							
145028	Seat, intake valve	1	15							
128080	Spring, exhaust valve	1	16							
190334	Spring, intake valve	1	17							
127940	Valve, exhaust	1	18							
144948	Valve, intake	1	19							
AR-73076	Unloading valve assembly	1								
153966	Body, unloader valve	1	20							
191037	Cap, unloader	1	21							
S-115	Capscrew	2	22							
S-605	Lockwasher	2	23							
128086	"O" ring	1	24							
127936	Seal, plunger	1	25							
150631	Spring, unloader valve	1	26							
109557	Washer	2	27							
S-605	Lockwasher, head to crankcase	4	28							
S-316	Key	1	29							
136403	Nameplate, serial number	1								
S-2267	Screw, nameplate	2								
S-626	Washer, plain	4	30							
AR-04130	Ring set, compressor (Std.)	1								
194810	Ring, compression	1	31							
187350	Ring, compression	1	32							
180810	Ring, oil	1	33							
BM-77410	Piston assembly (Std.)	1								
165430	Piston, air compressor	1	34							
119810	Pin, piston	1	35							
119859	Ring, snap	2	36							
176023	Rod, connecting	1	37							
S-112	Capscrew	4	38							
S-103-D	Capscrew	2	39							
S-604	Lockwasher	2	40							
550720	Lockplate	4	41							
S-915-A	Plug, pipe	1	42							
S-965-E	Plug, pipe	1	43							
650187	Support	1	44							
650792	Plug, pipe (Crankshaft)	1								

PARTS INDENTED ARE INCLUDED IN THE PART UNDER WHICH THEY ARE INDENTED



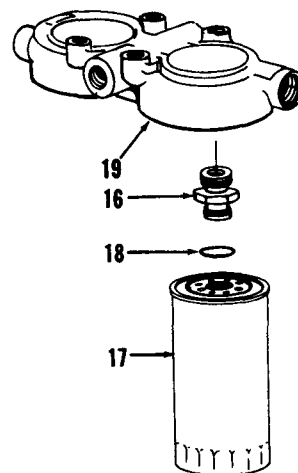
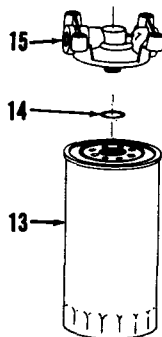
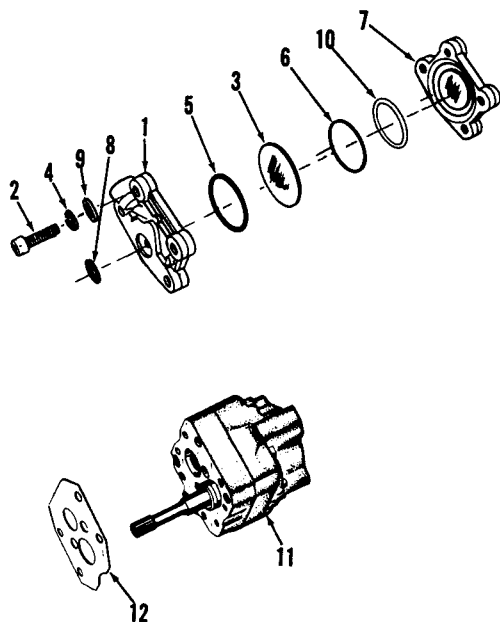
ENGINE APPLICATION		AUTOMOTIVE		B - OFF-HIGHWAY		C - CONSTRUCTION & INDUSTRIAL X		P - INDUSTRIAL POWER X	
PART NUMBER	PART NAME	NO. REQ'D.	REF. NO.	PART NUMBER	PART NAME	NO. REQ'D.	REF. NO.		
	FUEL PUMP DRIVE				MOUNTING PARTS				
BM-93760	Drive, fuel pump	1		S-105-A	Capscrew, drive	2	5		
177097	Gear, drive	1	1	S-105	Capscrew, drive	2	6		
BM-93759	Housing, drive (171635)	1	2	551160	Cover, drive shaft	1	7		
147610	Bushing, shaft	2	3	550123	Gasket, cover	1	8		
171636	Shaft, drive	1	4	153433	Gasket, support	1	9		
				S-604	Lockwasher, drive	2	10		
				S-610	Lockwasher, drive	2	11		
				S-1326	Screw, cover	4	12		
				S-607	Lockwasher	4	13		

PARTS INDENTED ARE INCLUDED IN THE PART UNDER WHICH THEY ARE INDENTED



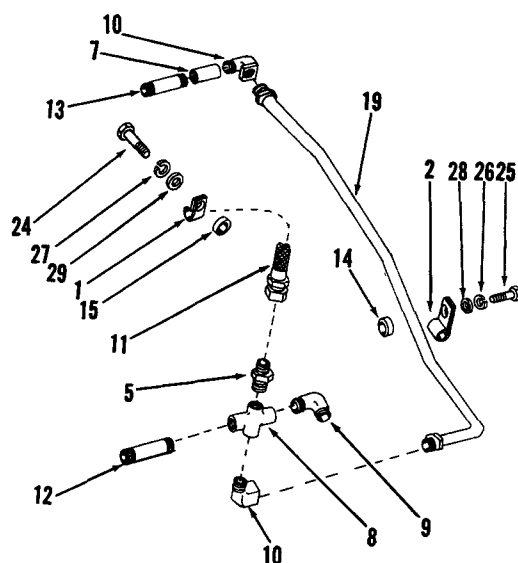
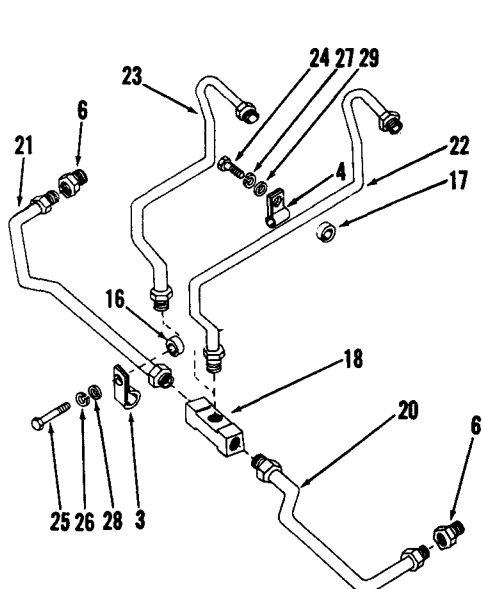
ENGINE APPLICATION		AUTOMOTIVE		X		B - OFF-HIGHWAY		C - CONSTRUCTION & INDUSTRIAL		X		P - INDUSTRIAL POWER		X	
PART NUMBER		PART NAME		NO. REQ'D.		REF. NO.		PART NUMBER		PART NAME		NO. REQ'D.		REF. NO.	
		SHUTDOWN VALVE								INJECTOR					
BM-69973	Valve, shutdown (12V, 1 pole)	1				AR-73326	Injector PT (Type D)				8				
187556	Capscrew, coil to housing	4	1			194041	Link, injector (1/2")				8		16		
134072	Coil assembly	1	2			AR-73359	Injector, less link				8				
129826	Housing, valve	1	3			178088	Adapter, injector				8		17		
129838	Knob, manual override	1	4			195321	Cup, injector (7 x .0055 x 5°)				8		18		
129888	"O" ring, coil to housing	1	5			174299	Clip, filter screen				8		19		
190876	"O" ring, shaft	1	6			173086	Gasket, orifice				8		20		
70295	Plug, pipe	1	7			101754	"O" ring adapter				24		21		
196037	Shaft, manual override	1	8			203426	Pin, roll				16		22		
129839	Shield, fuel	1	9			173085	* Plug, orifice				8		23		
129768	Spring	1	10			178009	Retainer, cup				8		24		
129827	Valve	1	11			174298	Screen, filter				8		25		
						166009	Spring, injector				8		26		
	MOUNTING PARTS					AR-40063	Barrel and plunger				8		27		
						185782	Gasket				8		28		
S-189-C	Capscrew, valve to housing	2	12			167157	Ball, check				8		29		
S-1003-1	Connection (Auto, C)	1				187326	* Barrel, injector				8				
181466	Lockwasher	2	13			189848	* Plug, barrel				8				
154087	"O" ring	1	14			187858	* Coupling, plunger				8				
67684	Washer, plain	2	15			178980	* Plunger, injector				8				
S-1004-1	Connection (P)	1													
							* Note: Not sold separately.								
		OPTIONAL								MOUNTING PARTS					
BM-69985	Valve, shutdown (24V, 2 pole)	1													
134076	Coil assembly	1				552458	Clamp, injector				8		30		
BM-69982	Valve, shutdown (12V, 2 pole)	1				166392	Capscrew, hex head				8		31		
134075	Coil assembly	1				69280	Washer				8		32		
BM-69979	Valve, shutdown (24V, 1 pole)	1													
134074	Coil assembly	1													

PARTS INDENTED ARE INCLUDED IN THE PART UNDER WHICH THEY ARE INDENTED



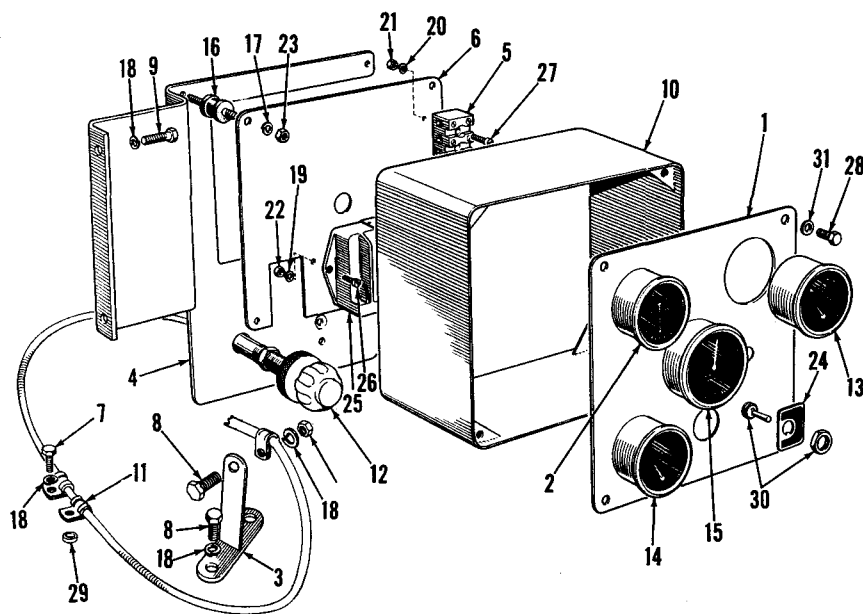
ENGINE APPLICATION		AUTOMOTIVE		X	B - OFF-HIGHWAY		C - CONSTRUCTION & INDUSTRIAL		X	P - INDUSTRIAL POWER		X
PART NUMBER	PART NAME	NO. REQ'D.	REF. NO.	PART NUMBER	PART NAME	NO. REQ'D.	REF. NO.					
PT FUEL SYSTEM Each Cummins PT Fuel Pump is calibrated to obtain the best performance and fuel economy for your engine. Your Cummins Distributor or Dealer has the special tools required for complete rebuild and calibration. Caution: Do not disturb the fuel pressure settings or the throttle screw settings, as serious damage to your engine may result. Only PT Fuel System parts which can be replaced without pump calibration are listed here. Your Cummins Distributor will record the specific part number of your complete PT Fuel Pump in the front of this catalog.				FUEL FILTER Auto Application 154711 Filter, fuel 1 FF-105 Cartridge 1 13 255622 Gasket, cover 1 14 142784 Head 1 15 P Application 156171 Filter, fuel 1 FF-105-D Cartridge 1 13 255622 "O" ring, element 1 14 142784 Head, fuel filter 1 15 C Application BM-78793 Filter, fuel 1 126516 Bolt, center 2 16 FF-105-D Cartridge 2 17 255622 "O" ring, element 2 18 135601 Head, fuel filter 1 19								
FUEL PUMP DAMPER BM-76340 Damper, fuel pump 1 153336 Body, damper 1 1 S-170-C Capscrew 2 2 202897 Diaphragm 1 3 S-600 Lockwasher 2 4 139988 "O" ring 1 5 100099 "O" ring 1 6 153338 Plate, damper 1 7 151900 Seal 1 8 70704 Washer 2 9 160514 Washer, nylon 1 10												
GEAR PUMP Auto, C Application BM-96327 Pump, gear 1 11 177764 Gasket 1 12 P Application AR-00936 Pump, gear 1 11 177764 Gasket 1 12												

PARTS INDENTED ARE INCLUDED IN THE PART UNDER WHICH THEY ARE INDENTED



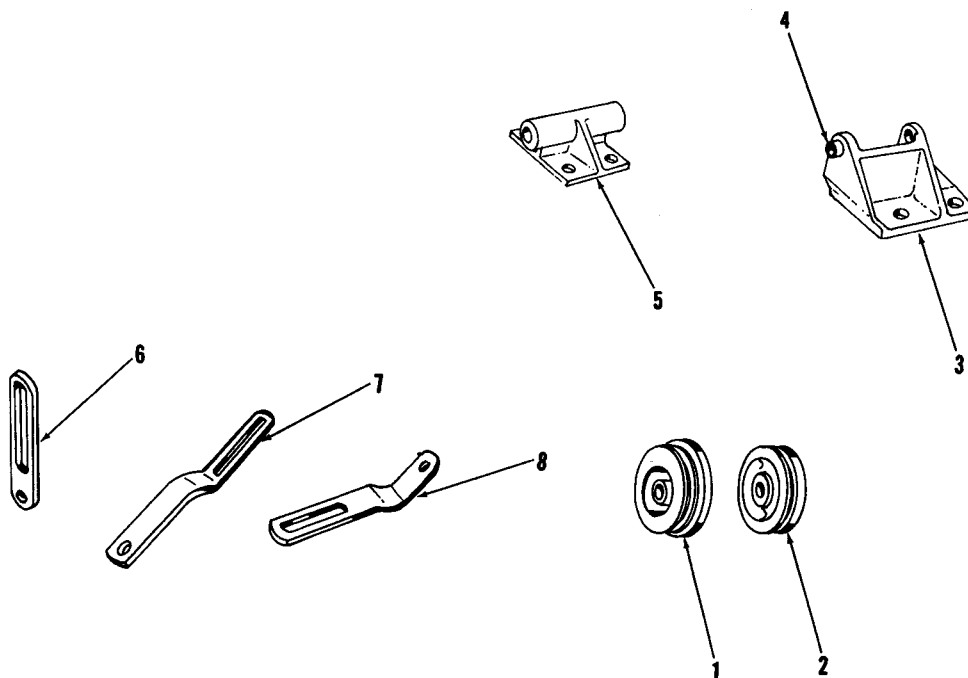
ENGINE APPLICATION		AUTOMOTIVE		X	B - OFF-HIGHWAY		C - CONSTRUCTION & INDUSTRIAL		X	P - INDUSTRIAL POWER		X
PART NUMBER	PART NAME	NO. REQ'D.	REF. NO.	PART NUMBER	PART NAME	NO. REQ'D.	REF. NO.					
FUEL TUBING				MOUNTING PARTS								
68152	Clip, hose	1	1	S-102	Capscrew, fuel line clip to push							
554014	Clip, hose	1	2		tube cover	2	24					
550465	Clip, assembly	1	3	S-105	Capscrew, fuel line clip to							
551394	Clip, hose	1	4		camshaft cover	2	25					
550475	Connector	1	5	S-604	Lockwasher	2	26					
S-1003-1	Connector	2	6	S-605	Lockwasher	2	27					
S-935	Coupling	1	7	S-602	Washer, plain	2	28					
175850	Cross-piece	1	8	S-626	Washer, plain	2	29					
43765-A	Elbow, drain	1	9									
185347	Elbow, crossover	2	10									
AS0401860SS	Hose (C,P)	1	11									
AS0402860SS	Hose (Auto)	1	11									
550291	Nipple	1	12									
550610	Nipple	1	13									
62087	Spacer	1	14									
65297	Spacer	1	15									
68368-A	Spacer	1	16									
114850	Spacer	1	17									
S-1006-1	Tee	1	18									
552184	Tube, fuel	1	19									
551212	Tube, fuel	1	20									
551213	Tube, fuel	1	21									
551217	Tube, fuel (C)	1	22									
551215	Tube, fuel (Auto)	1	23									
551797	Tube, fuel (P)	1	22									

PARTS INDENTED ARE INCLUDED IN THE PART UNDER WHICH THEY ARE INDENTED



ENGINE APPLICATION		AUTOMOTIVE		B - OFF-HIGHWAY		C - CONSTRUCTION & INDUSTRIAL		P - INDUSTRIAL POWER		
PART NUMBER	PART NAME	NO. REQ'D.	REF. NO.	PART NUMBER	PART NAME	NO. REQ'D.	REF. NO.			
	INSTRUMENT PANEL			118367	Plate, indicator switch	1	24			
650436	Panel, instrument	1	1	162843	Regulator, voltage	1	25			
68138	Adapter, hose	4		131449	Screw	2	26			
701214	Ammeter	1	2	S-1316	Screw	3	27			
109895	Bracket	1		S-1334	Screw	4	28			
650529	Bracket, throttle	1	3	150348	Shock mounting assembly	1				
650814	Bracket, instrument case	1	4	68368-A	Spacer	1	29			
650449	Block, terminal	1	5	102057	Switch, starting	1	30			
650565	Backplate	1	6	145027	Switch, magnetic	1				
S-102	Capscrew (5/16"-18 x 1")	1	7	149226	Switch, relay	1				
S-102-C	Capscrew (1/4"-28 x 2")	5		706085	Switch, oil pressure	1				
S-115	Capscrew (5/16"-18 x 7/8")	4		S-930-E	Tee, pipe	1				
S-117	Capscrew (3/8"-16 x 3/4")	4	8	70427	Washer, plain	4	31			
S-129	Capscrew (3/8"-24 x 1")	2	9	650816	Indicator, restriction assembly	1				
650427	Case, instrument	1	10	S-168-C	Capscrew	2				
550465	Clip	2	11	550465	Clip	2				
108722	Clamp, hose	2		650817	Flange, adapter	1				
187734	Control, throttle	1	12	650819	Insert	1				
162202	Connector	1		S-600	Lockwasher	2				
S-902	Coupling, pipe	1		S-224	Nut	2				
700469	Gauge, water temperature	1	13	650818	Tap, restriction	1				
650651	Gauge, oil pressure	1	14	650843	Tubing, nylon	A/R				
AS0401360SS	Hose	1		553391	Harness, wiring	1				
AS0403760SS	Hose	1		554013	Tube, clip assembly	8				
650525	Hourmeter	1	15	550465	Tube, clip assembly	4				
650442	Isolator, vibration	4	16							
S-600	Lockwasher (1/4")	12	17							
S-604	Lockwasher (3/8")	7	18							
S-607	Lockwasher	2	19							
S-636	Lockwasher (5/32")	3	20							
S-223	Nut (3/8")	1								
S-256	Nut	3	21							
S-259	Nut	2	22							
S-270	Nut (1/4")	12	23							

PARTS INDENTED ARE INCLUDED IN THE PART UNDER WHICH THEY ARE INDENTED



ENGINE APPLICATION		AUTOMOTIVE		X	B - OFF-HIGHWAY		C - CONSTRUCTION & INDUSTRIAL		X	P - INDUSTRIAL POWER		X			
PART NUMBER		PART NAME		NO. REQ'D.		REF. NO.		PART NUMBER		PART NAME		NO. REQ'D.		REF. NO.	
		ELECTRICAL EQUIPMENT								STARTING MOTOR					
156959		Alternator (Auto, P)		1						Auto, P Application					
157040		Alternator (C)		1											
AR-02336		Connector, regulator		1				186397		Motor, starting		1			
AR-02337		Connector, regulator		1				S-106		Capscrew, motor		3			
156958		Fan and baffle alternator (Auto, P)		1				S-608		Lockwasher, motor		3			
164337		Pulley alternator (Auto, P)		1		1									
176088		Pulley alternator (C)		1		2				C Application					
191818		Regulator		1											
145027		Switch, magnetic		1						Same as above except:					
102846		Switch, ignition		1											
		MOUNTING PARTS						ADD:							
								114123		Gasket, motor		1			
178473		Belt (Auto, P)		1											
178471		Belt (C)		1											
BM-96737		Bracket and bushing alternator (179078) (Auto, P)		1		3									
176365		Bushing		1		4									
171299		Bracket, alternator (C)		1		5									
S-199-B		Capscrew (Auto, P)		1											
S-103-D		Capscrew, alternator bracket		1											
S-112		Capscrew, alternator bracket (Auto)		4											
S-112		Capscrew, alternator bracket (C,P)		5											
S-102		Capscrew, adjusting link		1											
S-151		Capscrew (C)		1											
S-604		Lockwasher		7											
S-610		Lockwasher (C)		1											
S-605		Lockwasher		1											
163666		Link, adjusting (Auto)		1		6									
182716		Link, adjusting (C)		1		7									
182708		Link, adjusting (P)		1		8									
S-223		Nut (Auto, P)		1											
S-217		Nut (C)		1											
108515		Shim, alternator		A/R											
S-602		Washer (C,P)		1											
146161		Washer (Auto, P)		1											

PARTS INDENTED ARE INCLUDED IN THE PART UNDER WHICH THEY ARE INDENTED

ENGINE APPLICATION		AUTOMOTIVE		X		B - OFF-HIGHWAY		C - CONSTRUCTION & INDUSTRIAL		X		P - INDUSTRIAL POWER		X	
PART NUMBER		PART NAME		NO. REQ'D.		REF. NO.		PART NUMBER		PART NAME		NO. REQ'D.		REF. NO.	
		FLYWHEELS, RING GEARS and FLYWHEEL HOUSINGS													
		Flywheels, ring gears and flywheel housings have been designed to adapt the Cummins diesel to hundreds of different installations. For this reason these assemblies are not listed.													
		Your Cummins Distributor will record fly-wheel, ring gear and flywheel housing part numbers in the front of this catalog.													
		GASKET SETS													
AR-60180		Gasket set, cylinder head		1											
AR-60181		Gasket set, engine		1											
BM-68356		Gasket set, fuel pump		1											

PARTS INDENTED ARE INCLUDED IN THE PART UNDER WHICH THEY ARE INDENTED

NUMERICAL INDEX

Part Number	Description	Page	Part Number	Description	Page	Part Number	Description	Page
AR-00588	Gasket, cyl. head	9	BM-99814	Block, cylinder	1	108515	Shim, alternator	37
AR-00589	Gasket, cyl. head	9	BM-99820	Bearing set, main	3	108722	Clamp, hose	31,36
AR-00936	Pump, gear	34	BM-99986	Lever & bushing	8	109319	Lockplate	12
AR-02336	Connector	37	BM-99987	Lever, rocker	8	109895	Bracket	36
AR-02337	Connector	37				110827	Retainer, element	19
AR-03926	Head Assembly	31				110848	Element	19
AR-04130	Ring set	31	AS0401360SS	Hose	36	110980	Hose	25
AR-40063	Barrel & Plunger	33	AS0401860SS	Hose	35	114123	Gasket	37
AR-60078	Head, cylinder	9	AS0402860SS	Hose	35	114223	Pin, tappet	7
AR-60079	Head assembly	9	AS0403760SS	Hose	36	114850	Spacer	35
AR-60086	Pump, lub. oil	12	AS0502660SS	Hose	25	116029	"O" ring, support	18
AR-60089	Body and bushing	12				116759	Bearing	23
AR-60090	Gear, idler	12	AF-250	Element	10	116935	Adapter	25
AR-60092	Cover & bushing	12	AF-252	Element	29	116936	Elbow	25
AR-60098	Pump, lub. oil	12				117559	Lockplate	13,15
AR-60105	Body & bushing	13	FF-105	Cartridge	34	118367	Plate, switch	36
AR-60108	Pump, lub. oil	13	FF-105-D	Cartridge	34	119221	Spacer, fan	23
AR-60122	Cover & tube	10				119810	Pin, Piston	31
AR-60180	Gasket set	38				119859	Ring, snap	31
AR-60181	Gasket set	38				120684	Washer, relief valve	25
AR-60253	Filter, lub. oil	17				122121	Spring	29
AR-60486	Tube, suction	12	LF-500	Cartridge	18	125015	Gasket, washer	10
AR-60495	Tube, suction	12	LF-613	Cartridge	17	125016	Washer, cover	10
AR-60508	Shaft	8				125019	Gasket, cover	10
AR-60615	Camshaft	6				125740	Clamp	29
AR-60679	Pump, water	20	5846	Strap	29	126304	Yoke, regulator	12,13
AR-60698	Kit, water pump rep.	20	9089	Dowel	11	126516	Bolt, center	34
AR-61400	Ring set	4	9221	Gasket	20	127936	Seal	31
AR-73075	Intake & exhaust valve assy.	31	43765-A	Elbow, drain	35	127940	Valve	31
AR-73076	Unloading vlv. assy.	31	43828-A	Clamp	25	128080	Spring	31
AR-73326	Injector	33	43828-D	Clamp	25	128085	"O" ring	31
AR-73359	Injector	33	62087	Spacer	35	128086	"O" ring	31
AR-73455	Radiator & shroud	25	65297	Spacer	35	128765	Dowel, half ring	3
AR-73582	Air compressor	31	66292	Gasket	27	129768	Spring	33
			67012-1	Spacer, fan	23	129826	Housing	33
			67526	Clamp	23	129827	Valve	33
			67949	Clip, hose	25	129838	Knob	33
BM-68356	Gasket set	38	68138	Adapter, hose	36	129839	Shield, fuel	33
BM-69973	Valve, shutdown	33	68152	Clip, hose	35	129888	"O" ring	33
BM-69979	Valve, shutdown	33	68270	Connection, water	20	131911	Orifice, plug	18
BM-69982	Valve, shutdown	33	68368-A	Spacer	35,36	132049	Relief valve	25
BM-69985	Valve, shutdown	33	68568	Dowel	1,5	133748	Cover	29
BM-76340	Damper, fuel pump	34	68586	Bushing	12,13	134072	Coil	33
BM-77410	Piston assembly	31	68908-A	Lockplate	6,13	134074	Coil	33
BM-78775	Tube, vent	9	69562	Dowel	1,11	134075	Coil	33
BM-78784	Rod, connecting	4	69972	Hose	25	134076	Coil	33
BM-78793	Filter, fuel	34	70540	Spacer, fan	23	135601	Head, fuel filter	34
BM-79721	Gasket, cyl. head	9	70645	Dowel	1	136403	Nameplate	31
BM-79722	Lever & bushing	8	70760	Dowel	1,13	138381	Hose	25
BM-79723	Lever, rocker	8	70768	Stud, connection	25	139988	"O" ring	34
BM-79724	Lever & bushing	8	100973	Dowel, ring	1,9	140329	Gasket	22
BM-79725	Lever, rocker	8	100099	"O" ring	34	142784	Head	34
BM-91498	Tube, aerator	13	101322	Cap, oil filler	10	143108	Gasket	23
BM-91604	Cooler, lub. oil	19	101754	"O" ring	33	143116	Bearing	23
BM-92138	Body, scavenger	13	102057	Switch, starting	36	144714	Seat	31
BM-93759	Housing	32	102846	Switch	37	144948	Valve	31
BM-93760	Drive, fuel pump	32	102957	Dowel	1,11	145027	Switch, magnetic	36,37
BM-94014	Tappet, valve	7	103807	Hose	29	145028	Seat	31
BM-94016	Tappet, injector	7	105312	Elbow	29	145664	Bracket, filter	18
BM-94480	Hub, fan	23	106276	Seal, oil	23	145665	Strap, mounting	18
BM-94498	Tube, oil suction	13	106835	Cleaner, air	29	146651	Clamp	23,25
BM-96141	Damper, vibration	3	107091	Strap	29	146647	Shaft, fan hub	23
BM-96156	Impeller, water pump	20	107105	Adapter	29	147209	Pilot, fan	23
BM-96200	Piston, assembly	4	107125	Cover	29	147389	Screw, crosshead adj.	9
BM-96327	Pump, gear	34	107126	Gasket	29	147610	Bushing	31,32
BM-96630	Crossover, water	22	107127	Gasket	29	148293	"O" ring	19
BM-96631	Crossover, water	22	107128	Shell	29	148547	Dowel	1
BM-96737	Bracket & bushing	37	107738	Socket	7	149226	Switch, relay	36
BM-96834	Gear and bushing	13	107776	Flinger, water pump	20	150037	Spring	18
BM-98685	Crankcase, compressor	31	107981	Cap, oil filler	10	150038	Coupling, half	18
BM-99677	Crankshaft	3	108186	Lockwire	7	150039	Coupling, half	18
BM-99803	Tube, suction	13	108187	Lockwire	7	150348	Shock, mounting	36

Part Number	Description	Page	Part Number	Description	Page	Part Number	Description	Page
183510	Piston	4	550547	Clamp, hose	22	650429	Bush, radiator	25
184044	Gear, main drive	12,13	550692	Clip, hose	21	650434	Stay, radiator	25
185556	Pan, oil	15	550720	Lockplate	26,31	650436	Panel, instrument	36
185557	Baffle, oil pan	15	550788	Clamp	31	650442	Isolator	36
185782	Gasket	33	551079	Spring, by-pass vlv.	12,13	650449	Block, terminal	36
186226	Tube	31	551084	Plate	7	650450	Support, rear	5
186397	Motor, starting	37	551108	Lockplate	26	650525	Hourmeter	36
187011	Body, lub. oil	12	551117	Lockplate	12	650529	Bracket	36
187012	Gear	12,13	551158	Gasket, bolt	17	650565	Backplate	36
187013	Gear	12	551160	Cover, drive shaft	11,32	650651	Gauge	36
187326	Barrel, injector	33	551161	Cover, gear housing	11	650665	Bracket	29
187350	Ring, compression	31	551186	Dipstick	14	650814	Bracket	36
187639	Gear	31	551212	Tube, fuel	35	650816	Indicator	36
187649	Gear, camshaft	6	551213	Tube, fuel	35	650817	Flange	36
187734	Control, throttle	36	551215	Tube, fuel	35	650818	Tap, restriction	36
187858	Coupling	33	551217	Tube, fuel	35	650819	Insert	36
188393	Cover	5	551394	Clip, hose	35	650843	Tubing, nylon	36
188394	Washer (5/8")	1	551467	Plate, gear housing	11	650864	Bracket	22,25
188395	Capscrew (9/16"-18 x 2 5/8")	1	551475	Plug, cup	9	650866	Bracket	25
188396	Gasket	5	551514	Seal, oil	5	650980	Cap, radiator	25
188397	Support, front	5	551515	Seal, oil	11	650982	Gasket	25
188476	Spring, by-pass	17	551516	Dowel	13	650984	Valve, relief	25
188903	Bracket	21	551607	Shaft	8	650985	Gasket	25
189230	Pan, oil	16	551608	Bracket	8	650986	Tube	25
189848	Plug, barrel	33	551609	Pin	8	650987	Clamp	25
189999	Tube	31	551680	Shell, filter	17	650989	Tank, top	25
190138	Shaft, idler	12	551681	Can, filter	17	650990	Tank, bottom	25
190141	Body	13	551682	Plate	17	650991	Panel	25
190145	Shaft, pump	13	551683	Spring, cartridge	17	650992	Panel	25
190334	Spring	31	551684	Washer, bolt seal	17	650993	Valve, relief	25
190740	Plate	9	551685	Seal, bolt	17	650994	Plate	25
190817	Retainer, crosshead	9	551686	Support, cartridge	17	650995	Plate	25
190876	"O" ring	33	551687	Spacer	17	650996	Gasket	25
191037	Cap	31	551688	Circlip	17	651069	Fan	25
191818	Regulator	37	551690	Bolt, center	17	700469	Gauge	36
193009	Main bearing cap	1	551759	Guide, intake valve	9	701214	Ammeter	36
193010	Main bearing cap	1	551775	Dipstick	16	706085	Switch	36
193011	Main bearing cap	1	551786	Cover, cyl. head	10			
193012	Main bearing cap	1	551797	Tube, fuel	35			
193013	Main bearing cap	1	552142	Dipstick	14			
193302	ring, sealing head	17	552184	Tube, fuel	35			
193557	Cover, water header	2	552332	Body, water pump	20			
194037	Socket	8	552334	Shaft, water pump	20			
194038	Lever, rocker	8	552335	Bearing, ball	20			
194041	Link, injector	33	552377	Bearing, ball	20			
194810	Ring, compression	31	552458	Clamp	33			
195000	Insert, valve seat	9	553015	Plug, oil pan	14			
195321	Cup, injector	33	553019	"O" ring	9			
195360	Bushing, piston pin	4	553371	Data plate	1			
196000	Dipstick	15	553391	Harness, wiring	36			
196037	Shaft	33	553461	Plate, swirl	9			
200064	Clamp	14,15	553670	Half ring, crankshaft	3			
200509	Seal, seat	20	553671	Half ring, crankshaft	3			
200515	Impeller	20	553672	Half ring, crankshaft	3			
200817	Gasket	31	554003	Bushing, camshaft	1			
200819	Disc, by-pass	17	554004	Bushing, camshaft	1			
201050	Camshaft	6	554013	Tube, clip	36			
202897	Diaphragm	34	554014	Clip, hose	35			
203426	Pin, roll	33	650041	Strap	29			
204930	Ring, oil	4	650051	Air cleaner	29			
208990	Ring, compressor	4	650055	Element	29			
209889	Cleaner	29	650056	Cover	29			
209890	Element	29	650057	Seal	29			
252055	Support	18	650059	Hood	29			
252056	Shell, filter	18	650187	Support	31			
252138	Support	18	650255	Bracket	25			
255622	Gasket	34	650368	Support, front	5,25			
550113	Tube, filler	10	650384	Pipe	25			
550123	Gasket	11,32	650385	Pipe	25			
550164	Gasket	6	650387	Rubber, mounting	25			
550171	Bracket, tube	14	650390	Decal	21			
550291	Nipple	35	650399	Radiator	25			
550310	Tube, dipstick	14	650404	Shroud, fan	25			
550465	Clip, assembly	35,36	650406	Guard, fan	25			
			650418	Adapter	25			
			650427	Case, instrument	36			

Part Number	Description	Page	Part Number	Description	Page	Part Number	Description	Page
150460	Gasket	29	163037	Spring, valve	9	172031	Connection, outlet	22
150631	Spring	31	163087	Gasket, oil drain	14,15	172032	Housing, thermostat	22
150746	Cup	29			16	172036	Support, oil tube	15
150749	Element	29	163666	Link, adjusting	37	172645	Housing, gear	11
150767	Clip	29	163759	Connector, tube	14,15	173085	Plug, orifice	33
150768	Cap	29			16	173086	Gasket	33
150786	Cover	29	163981	Thermostat	22	173090	Deflector, oil	5
150789	Gasket	29	164159	"O" ring, cover	18	173139	Manifold	26
151607	Air cleaner assembly	29	164337	Pulley	37	173140	Manifold	26
151693	Gasket	29	164916	Gasket	12	173223	Pulley, fan hub	23
151770	Pin, piston	4	165153	Gasket	19	173640	Half ring, crankshaft	3
151787	Body	29	165430	Piston	31	174298	Screen, filter	33
151792	Gasket	29	166009	Spring	33	174299	Clip, screen	33
151794	Clamp	29	166401	Housing	19	175172	Damper, vibration	3
151799	Body	29	166407	Gasket	19	175282	Lockplate	11,12
151805	Clamp	29	166452	Rod, connecting	4	175623	Head, filter	17
151900	Seal	34	166772	Half collet, valve	9	175702	Pan, oil	14
152237	Pilot, fan	23	166774	Valve, exh. & int.	9	175727	Gasket, oil pan	14,15
152936	Bushing	8	167157	Ball, check	33			16
152937	Bushing	8	167305	Bearing, camshaft	6	175729	Pan, oil	14
153338	Plate, damper	34	167800	Gasket	2	175795	Tube, by-pass	12,13
153433	Gasket	11,32	167801	Cover	1	175805	Cap, by-pass spring	12,13
153679	Roller, tappet	7	167802	Gasket	1	175850	Cross, piece	35
153807	Dowel	11	167834	Cover, camshaft	6	176023	Rod	31
153882	Tube	9	167993	Gasket, compr.	11,31	176025	Crankcase, compr.	31
153964	Cover	31	168003	Gasket	26	176027	Gasket	31
153966	Body	31	168004	Gasket	26	176030	Crankshaft, compr.	31
154018	Gasket	31	168067	Manifold	27	176088	Pulley	37
154087	"O" ring	33	168069	Gasket	27	176365	Bushing	37
154109	Bracket	8	168209	Rod, push	7	176596	Cover, water header	2
154220	Guide, crosshead	9	168255	Lever, rocker	8	176598	Gasket	2
154272	Breather, crankcase	10	168285	Lever, rocker	8	176945	Corrosion resistor	21
154571	Roller, tappet	7	168306	Screw, adjusting	8	177086	Gear, crankshaft	3
154711	Filter, fuel	34	168644	Housing, gear	11	177097	Gear	32
154946	Guide, exh. valve	9	168649	Gasket	11	177217	Hose	31
154996	Gasket	31	168650	Gasket	11	177764	Gasket	34
155336	Body, damper	34	168919	Bracket	22	178009	Retainer, cap	33
155441	Retainer, spring	9	168978	Tube, dipstick	14	178088	Adapter	33
155997	Cover, breather	10	168979	Support, oil tube	14,16	178276	Body	13
155998	Housing, element	10	169042	Gasket	20	178281	Cover, pump	13
156081	Grommet	9	169154	Pin, tappet	7	178282	Gasket, cover	13
156082	Grommet	9	169367	Housing	29	178283	Gasket, cover	12,13
156171	Filter, fuel	34	169390	Gasket	29	178284	Shaft, drive	12,13
156438	Spring	7	169391	Cover	29	178286	Shaft, idler	13
156439	Spring	7	169392	Gasket	29	178471	Belt	37
156541	Seal, intake valve	9	169630	Sleeve, injector	9	178473	Belt	37
156674	Grommet	9	170326	Rod, push	7	178685	Belt	23
156676	Ring, snap disc	17	170783	Pulley, water pump	20	178804	Hose	22
156879	Crosshead, valve	9	170895	Seal, water pump	20	178980	Plunger, injector	33
156958	Fan	37	171270	Packing, cyl. liner	1	179065	Gear	13
156959	Alternator	37	171299	Bracket	37	179078	Bracket	37
156996	Gasket	27	171627	Housing, gear	11	179122	Head, compressor	31
157015	Gasket	27	171634	Tube, dipstick	15,16	179710	Liner, cylinder	1
157018	Gasket, cover	10	171635	Housing	32	179901	Valve, shut-off	21
157040	Alternator	37	171636	Shaft	32	179904	Clamp, hose	21
157151	Decal, filter	18	171638	Body	21	179913	Hose	21
157290	Gasket	22	171639	Cover	21	179924	Hose	21
157620	Bearing, connecting rod	4	171640	Plate	21	180676	Bolt, Main Bearing cap	
			171641	Plate	21	180810	Ring, oil	31
157626	Bolt, connecting rod (7/16"-20 x 3 5/16")	4	171642	Plate	21	181165	Cover	12
157782	Head, cylinder	9	171643	Spring	21	181271	Retainer, grommet	9
157911	Gasket	31	171644	Gasket	21	181728	Gasket	17
157978	Ring, snap	4	171645	Element	21	182200	Bearing, main	3
159267	Plate	27	171690	Ring, compr.	4	182210	Bearing, main	3
159667	Cover	18	171786	Shim liner (.007")	1	182310	Bearing, main	3
159707	Filter, hub oil	18	171787	Shim liner (.010")	1	182360	Crankshaft	3
160586	Ring, retaining	20	171788	Shim liner (.012")	1	182400	Bearing, main	3
161488	Manifold	26	171789	Shim liner (.014")	1	182697	Cover, camshaft	6,23
161489	Manifold	26	171790	Shim liner (.021")	1	182706	Screw, adjusting	23
161825	Plug, rocker shaft	8	1717880	Seal, crevice	1	182708	Link, adjusting	37
162182	Capscrew, cyl. head	1,9	171936	Tappet, injector	7	182716	Link, adjusting	37
162183	Capscrew, cyl. head	1,9	171937	Tappet valve	7	183014	Plunger, regulator	12,13
162843	Regulator	36	171999	Guide, valve	9	183070	Block, cylinder	1
			172017	Support	22	183429	Wear plate	31

HARDWARE

Bolt

70223 5/16"-18 x 1 1/4"
169369

Bushing

S-921-D 3/8"
S-929-B

Capscrew

S-102 5/16"-18 x 1"
S-102-C 1/4"-28 x 2"
S-102-D 3/8"-16 x 3"
S-103-D 3/8"-16 x 1 1/4"
S-104 3/8"-16 x 2 1/4"
S-105 3/8"-16 x 3 1/2"
S-105-A 7/16"-20 x 1 1/4"
S-106 1/2"-13 x 1 3/4"
S-106-A 5/16"-18 x 1 3/4"
S-107 5/16"-18 x 3/4"
S-109 3/8"-16 x 7/8"
S-110 5/16"-18 x 5/8"
S-111 5/16"-18 x 1 1/2"
S-112 3/8"-16 x 1"
S-114 1/4"-20 x 3/4"
S-115 5/16"-18 x 7/8"
S-115-C 1/4"-28 x 1/2"
S-117 3/8"-16 x 3/4"
S-119 5/16"-18 x 1 1/4"
S-120 3/8"-16 x 1 3/4"
S-121 1/4"-28 x 5/8"
S-124-C 5/16"-18 x 4"
S-126 3/8"-16 x 2 1/2"
S-129 3/8"-24 x 1"
S-137 3/8"-16 x 2"
S-138-C 5/16"-18 x 3 1/2"
S-139 5/8"-11 x 2 3/4"
S-141 3/8"-16 x 2 3/4"
S-144 5/8"-11 x 2 1/2"
S-145 1/2"-13 x 1 1/4"
S-149-B 1/2"-20 x 1 1/2"
S-151 7/16"-14 x 6"
S-155-A 5/16"-18 x 2 1/2"
S-163 3/8"-16 x 3 1/4"
S-165 3/4"-24 x 1 1/2"
S-166 3/8"-24 x 1 1/8"
S-167 1/4"-20 x 7/8"
S-168-C 1/4"-20 x 1"
S-170-C 1/4"-20 x 1 1/4"
S-172-B 3/8"-16 x 1 1/8"
S-174-B 3/8"-16 x 1 3/8"
S-188-C 1/4"-20 x 1/2"
S-189-C 1/4"-20 x 1 3/4"
S-199-A 3/8"-16 x 4"
S-199-B 3/8"-16 x 3 3/4"
70188 1/4"-20 x 3/4"
70449 5/16"-18 x 1 1/2"
106289 1/2"-13 x 2 1/4"
108707 3/8"-16 x 1 1/2"
166392 3/8"-16 x 2 1/2"
187556
550389 5/16"-18 x 5 1/8"

Connector

S-1002-A
S-1003-1
S-1004-1
160216
162202
168076
176538

Connector (Con't)

179902
194410
550475
650981

Coupling

S-902
S-935

Drain Cock

S-962-E

Elbow

S-1005-A
179903
185347
650133
650134

Key

S-313
S-316
144131

Lockwasher

S-600 1/4"
S-603 5/8"
S-604 3/8"
S-605 5/16"
S-607 3/16"
S-608 1/2"
S-610 7/16"
S-636 5/32"
70189 1/4"
70194 5/16"
181466 5/16"
650983 3/8"
650988 1/4"

Nipple

S-932-B
550610

Nut

S-205 3/8"
S-212 1/2"
S-217 7/16"
S-221 5/16"
S-223 3/8"
S-224 1/4"
S-254 3/8"
S-256 5/16"
S-259 3/8"
S-270 1/4"
S-273 3/8-24"
S-1022-A
67532
70299
125017
146650
152838 7/16"

Pin

S-510

Pipe

S-920

Plug

S-908 3/8"
S-910-B 1/4"
S-911-B 1/8"
S-915-A 1/2"
S-965-E 1/16"
S-995 3/4"
66030 7/8"
67622 3/8"
68606 1/8"-27 NPTF
70295
139090 1/4"
550973
553364
650792 1/16"

Screw

S-1316 No. 6-32 x 1 1/8"
S-1326 No. 10-24 x 5/8"
S-1334 1/4"-28 x 3/8"
S-2267 No. 2 x 1/4"
S-2286 No. 2 x 3/16"
131449 No. 10-24 x 1/2"
152792

Tee

S-930-E
S-1006-1
126876

Washer

S-602 13/32"
S-626 11/32"
S-631 9/32"
S-658 21/32"
S-689 19/32"
S-691
67684 17/64"
69280 25/64"
70233 11/32"
70427 9/32"
70704 .265
108976
109557
146161 3/8"
152793
153411 9/16"
160514 1.695