



PARTS BOOK

NHE-225-B1 MODEL

BULLETIN 967038



PARTS ORDERING FOR.....

Genuine Cummins Parts and service facilities are world-wide. There are more than 900 Cummins Sales and Service locations in the principal cities of the United States and Canada, and more than 200 Sales and Service locations situated elsewhere throughout the free world. Each distribution outlet is thoroughly equipped with technical data, factory-trained mechanics, modern equipment and a full, adequate stock of Genuine Cummins Parts.

For quicker and better service, your parts requirements should be ordered from your nearest authorized Cummins Distributor or Dealer. At any of the locations prompt, intelligent, courteous service is a basic trademark. Each is ready and eager to help in every possible way through personal contact or through the mail — at your convenience.

The satisfactory ordering and receiving of parts by the purchaser is greatly dependent upon the proper use of available information. In order that all avoidable errors may be eliminated, the following instructions are offered as the purchaser's guide:

1. Write your order clearly, using a typewriter if possible.
2. Be sure to list the correct part number. If in doubt as to the correct part number, state the model and serial number of the engine on which the part is to be used. Part numbers are usually located in various places on the part itself.
3. When possible, arrange your purchase order in part number numerical sequence.
4. Always specify shipping instructions — "Best Way" is satisfactory if you have no preference.
5. State your company name and shipping address clearly.

Genuine Cummins Parts mean QUALITY! They're designed and engineered to fit best in your Cummins Diesel. Each part is made of the highest quality material — on the most accurate of machines — by the top craftsmen of the trade.

You can be sure a Genuine Cummins Part will fit better — do the job better — lessen the chances of costly breakdown. When you buy replacement parts, buy quality. Buy Genuine Cummins Parts!

YOU OWN THE BEST . . . REPAIR WITH THE BEST

NHE-225-BI DIESEL ENGINE

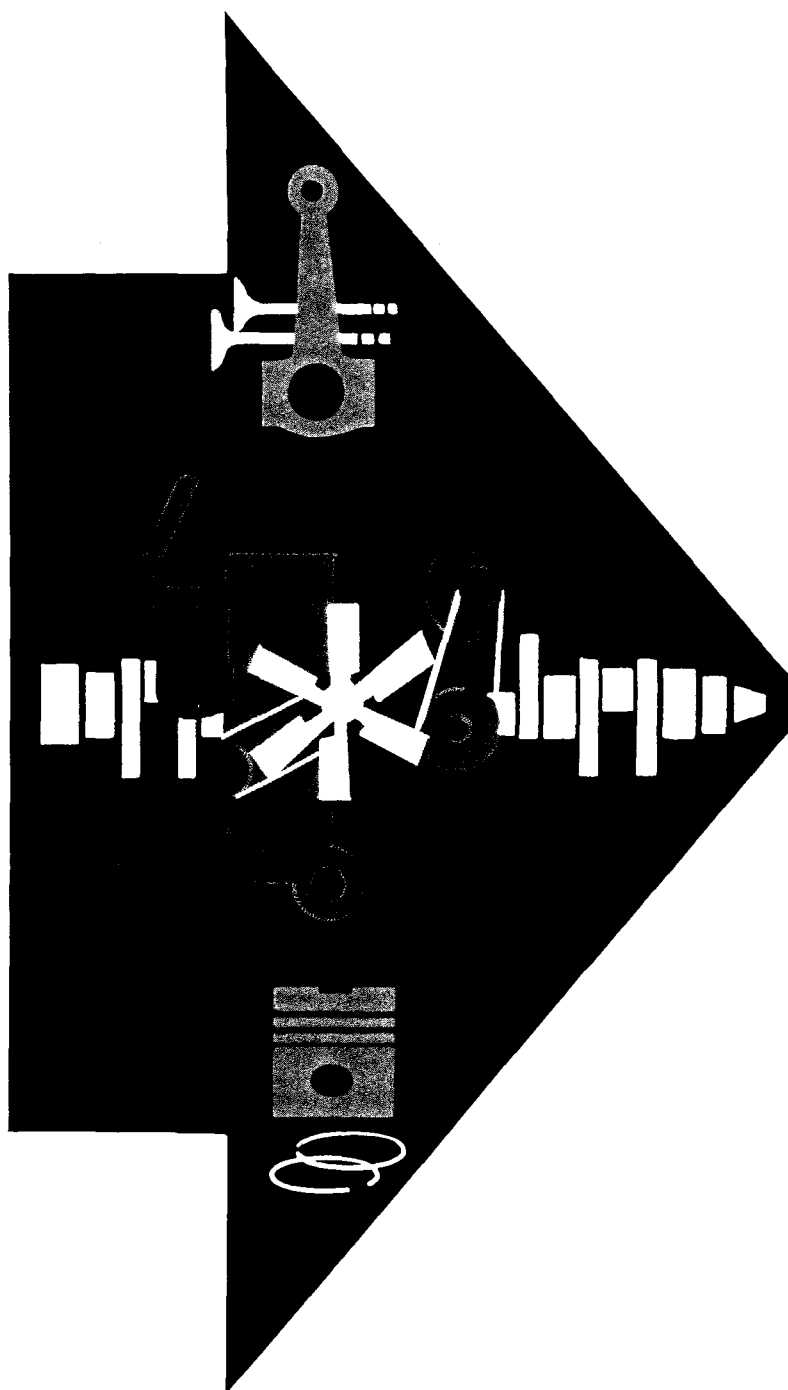
CUMMINS ENGINE COMPANY, INC.

COLUMBUS, INDIANA

PRINTED IN U.S.A.

PRICE \$.25

COPYRIGHT 1965



SPECIAL PARTS

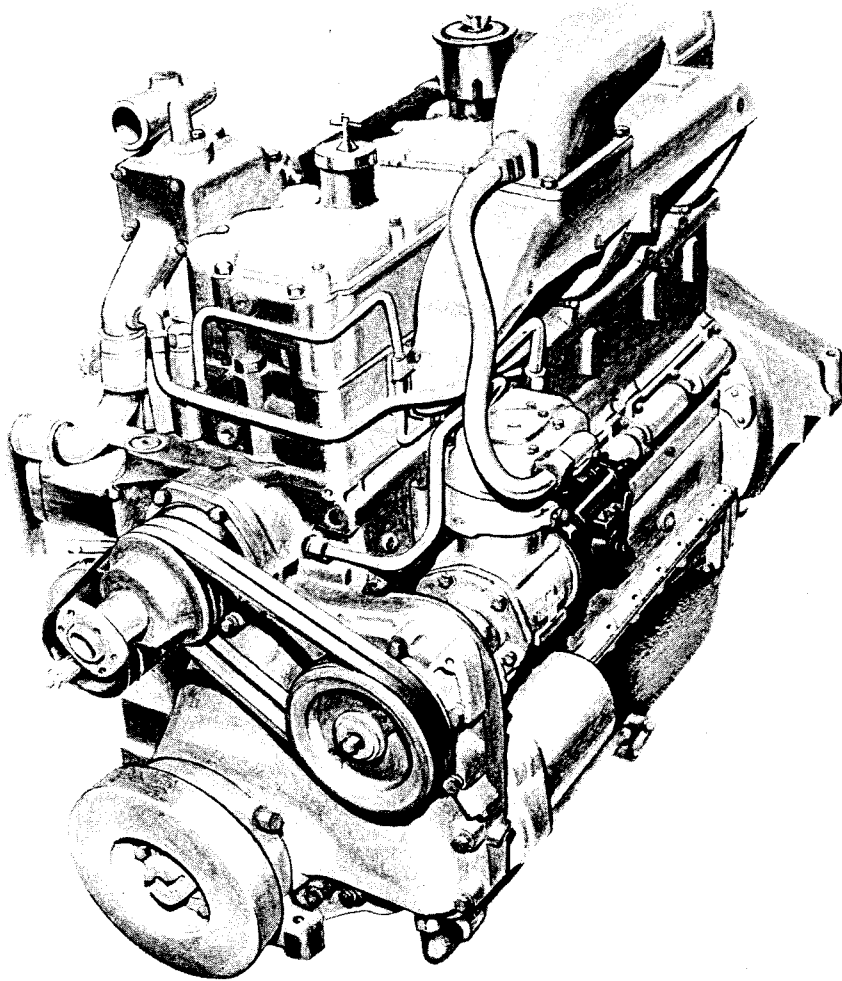
This Parts Book includes those parts that are normally used on our standard engine model. Special Parts peculiar to engine serial No. _____ are listed on the form below. To make certain you have ordered correct parts, refer to this form before submitting Parts Order.

[illegible]

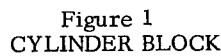
Cummins Distributor _____

CONTENTS

DESCRIPTION	PAGE
Cylinder Block - - - - -	1
Camshaft Bushing and Cylinder Liner	
Crankshaft, Main Bearings and Vibration Damper - - -	2
Connecting Rod, Piston and Rings - - - - -	3
Rear Cover and Camshaft - - - - -	4
Gear Cover - - - - -	5
Cylinder Head - - - - -	6
Rocker Lever Housing and Cover - - - - -	7
Crankcase Breather	
Cam Follower Housing and Push Rods - - - - -	8
Oil Pan, Dipstick and Tube - - - - -	9
Lubricating Oil Filter - - - - -	10
Lubricating Oil Cooler - - - - -	11
Lubricating Oil Pump - - - - -	12
Water Pump and Drive Pulley - - - - -	13
Water Manifold - - - - -	14
Thermostat Housing - - - - -	15
Air Intake Manifold and Connection - - - - -	16
Air Cleaner - - - - -	17
Exhaust Manifold - - - - -	18
Fuel Pump Drive - - - - -	19
PT Fuel System - - - - -	20-21
Fuel Pump Damper, Gear Pump and Fuel Filter	
Shutdown Valve, Fuel Tubing and Injector	
Flywheel, Ring Gear, Flywheel Housing, Gasket Sets -	22
and Electrical Equipment	
Corrosion Resistor - - - - -	23



Cummins NHE-225 Diesel Engine



6303027

PARTS INDENTED ARE INCLUDED IN THE PART UNDER WHICH THEY ARE INDENTED

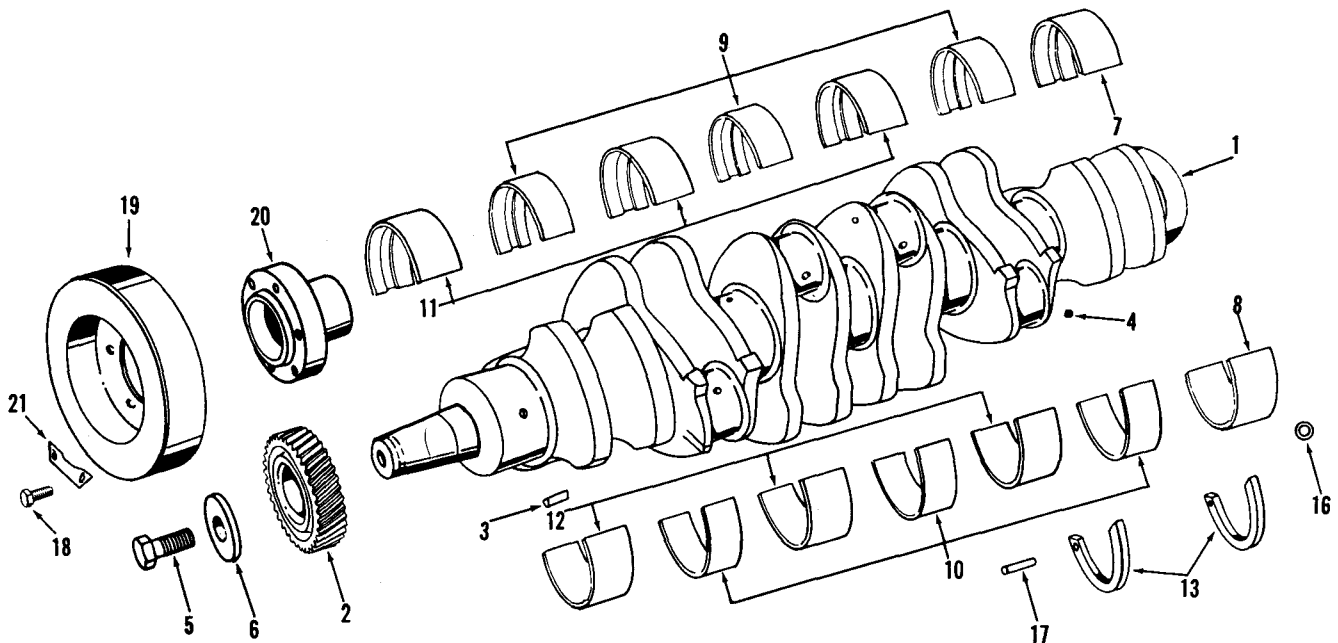


Figure 2
CRANKSHAFT, MAIN BEARING SHELLS and DAMPER

Part Number	Part Name	No. Req.	Fig. No.	Ref. No.	Part Number	Part Name	No. Req.	Fig. No.	Ref. No.
BM-70965	Crankshaft assembly	1							
142770	Crankshaft	1	2	1					
142804	Gear, crankshaft	1	2	2					
9300-1	Key, gear	1	2	3					
S-911-B	Plug, pipe	6	2	4					
140410	Capscrew, self-locking	1	2	5					
140411	Retainer, hub	1	2	6					
BM-28978	* Set, main bearing shell	1							
44387	Shell, main bearing (No. 7, upper)	1	2	7					
44388	Shell, main bearing (No. 7, lower)	1	2	8					
44385	Shell, main bearings (No. 2,4 and 6, upper)	3	2	9					
44386	Shell, main bearing (No. 2,4 and 6, lower)	3	2	10					
44383	Shell, main bearing (No. 1,3 and 5, upper)	3	2	11					
44384	Shell, main bearing (No. 1,3 and 5, lower)	3	2	12					
157280	Ring, thrust	4	2	13					
60575	Dowel, ring	7	2	16					
67294	Dowel, thrust ring	2	2	17					
* Main bearings may be purchased in .010", .020", .030" or .040" undersize.									
108919	Capscrew	6	2	18					
20633-1	Damper, vibration	1	2	19					
175183	Flange, crankshaft	1	2	20					
68462	Lockplate	3	2	21					

PARTS INDENTED ARE INCLUDED IN THE PART UNDER WHICH THEY ARE INDENTED

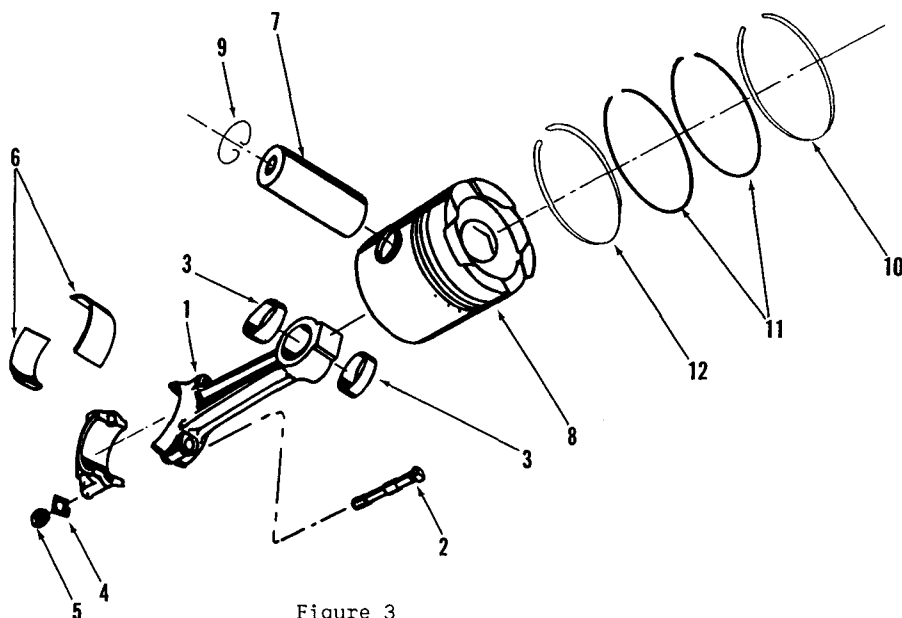


Figure 3
CONNECTING ROD, PISTON and RINGS

Part Number	Part Name	No. Req.	Fig. No.	Ref. No.	Part Number	Part Name	No. Req.	Fig. No.	Ref. No.
BM-52474	Connecting rod assembly (121579)	6	3	1	BM-75830	Ring set, piston (Std.)	1		
9195-3	Bolt, connecting rod	12	3	2	147670	Ring, compression	6	3	10
121510	Bushing, piston pin	12	3	3	154023	Ring, compression	12	3	11
112611	Lockplate	12	3	4	122563	Ring, oil	6	3	12
69936	Nut, bolt	12	3	5	BM-75832	Ring set, piston (.020")	1		
139620	* Bearing, connecting rod	12	3	6	147672	Ring, compression	6	3	10
* Connecting rod bearings are available in .010", .020", .030", .040" undersize.					154022	Ring, compression	12	3	11
					122562	Ring, oil	6	3	12
					BM-75833	Ring set, piston (.030")	1		
					147673	Ring, compression	6	3	10
					154023	Ring, compression	12	3	11
					122565	Ring, oil	6	3	12
BM-92140	Piston assembly	6			BM-75834	Ring set, piston (.040")	1		
150820	Pin, piston	6	3	7	147674	Ring, compression	6	3	10
167740	Piston	6	3	8	154024	Ring, compression	12	3	11
61908	Ring, snap	6	3	9	122564	Ring, oil	6	3	12
BM-92142	Piston (.020")	6							
150820	Pin, piston	6	3	7					
167742	Piston	6	3	8					
61908	Ring, snap	6	3	9					
BM-92143	Piston (.030")	6							
150820	Pin, piston	6	3	7					
167743	Piston	6	3	8					
61908	Ring, snap	6	3	9					
BM-92144	Piston (.040")	6							
150820	Pin, piston	6	3	7					
167744	Piston	6	3	8					
61908	Ring, snap	6	3	9					

PARTS INDENTED ARE INCLUDED IN THE PART UNDER WHICH THEY ARE INDENTED

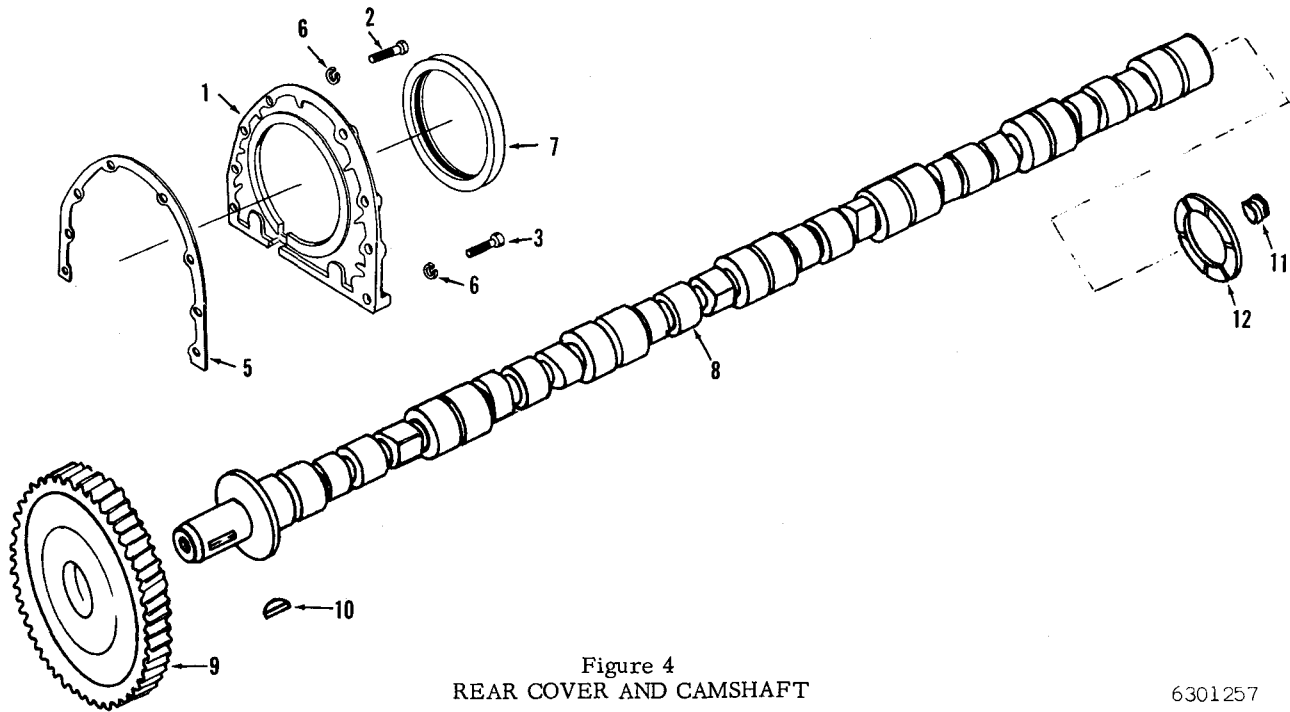


Figure 4
REAR COVER AND CAMSHAFT

6301257

Part Number	Part Name	No. Req.	Fig. No.	Ref. No.	Part Number	Part Name	No. Req.	Fig. No.	Ref. No.
	Rear Cover					Camshaft			
123982	Cover, rear	1	4	1	129860	Camshaft (R.H.)	1	4	8
S-120-A	Capscrew	6	4	2	109072	Gear, camshaft	1	4	9
S-165	Capscrew	2	4	3	69550	Key, gear	1	4	10
64790	Dowel, rear cover	2			68193	Plug, pipe	1	4	11
40662	Gasket (.010")	As	4	5	9235-1	Ring, thrust	1	4	12
40662-A	Gasket (.005")	Req'd	4	5					
S-604	Lockwasher	8	4	6					
141744	Seal, rear oil	1	4	7					

PARTS INDENTED ARE INCLUDED IN THE PART UNDER WHICH THEY ARE INDENTED

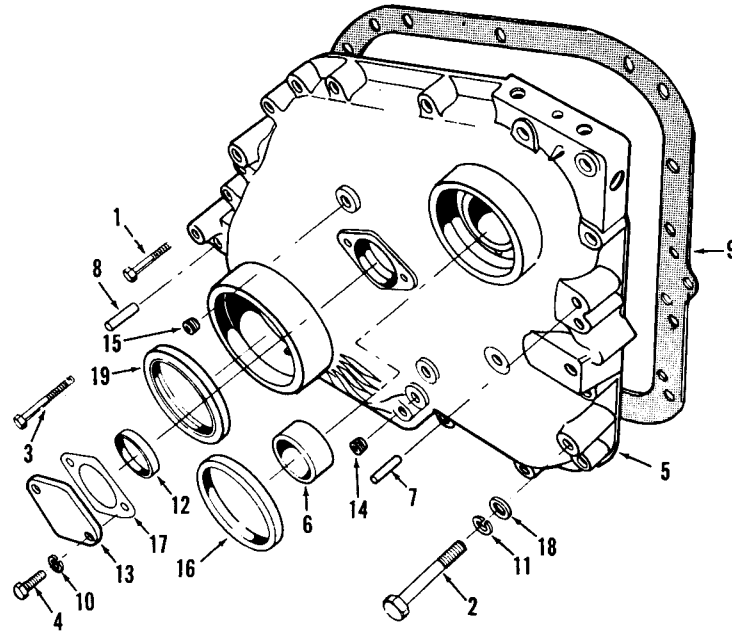


Figure 5
GEAR COVER

Part Number	Part Name	No. Req.	Fig. No.	Ref. No.	Part Number	Part Name	No. Req.	Fig. No.	Ref. No.
S-109	Capscrew	2	5	1					
100915	Capscrew	15	5	2					
S-131-C	Capscrew	1	5	3					
S-127-A	Capscrew	2	5	4					
BM-70398	Cover, gear (137164)	1	5	5					
132770	Bushing	1	5	6					
60408	Dowel	1	5	7					
70653	Dowel	1	5	8					
121934	Gasket, cover	1	5	9					
S-604	Lockwasher	2	5	10					
S-610	Lockwasher	18	5	11					
67270	Packing, camshaft thrust plate	1	5	12					
138988	Plate, camshaft thrust	1	5	13					
S-908	Plug, pipe	1	5	14					
S-911-B	Plug, pipe	1	5	15					
149488	Seal	1	5	16					
BM-56657	Shim assembly	1							
68192-A	Shim (.010")	Use	5	17					
68192-B	Shim (.005")	As	5	17					
68192-C	Shim (.002")	Req'd	5	17					
S-622	Washer, plain	18	5	18					
141743	Seal, crankshaft oil	1	5	19					

PARTS INDENTED ARE INCLUDED IN THE PART UNDER WHICH THEY ARE INDENTED

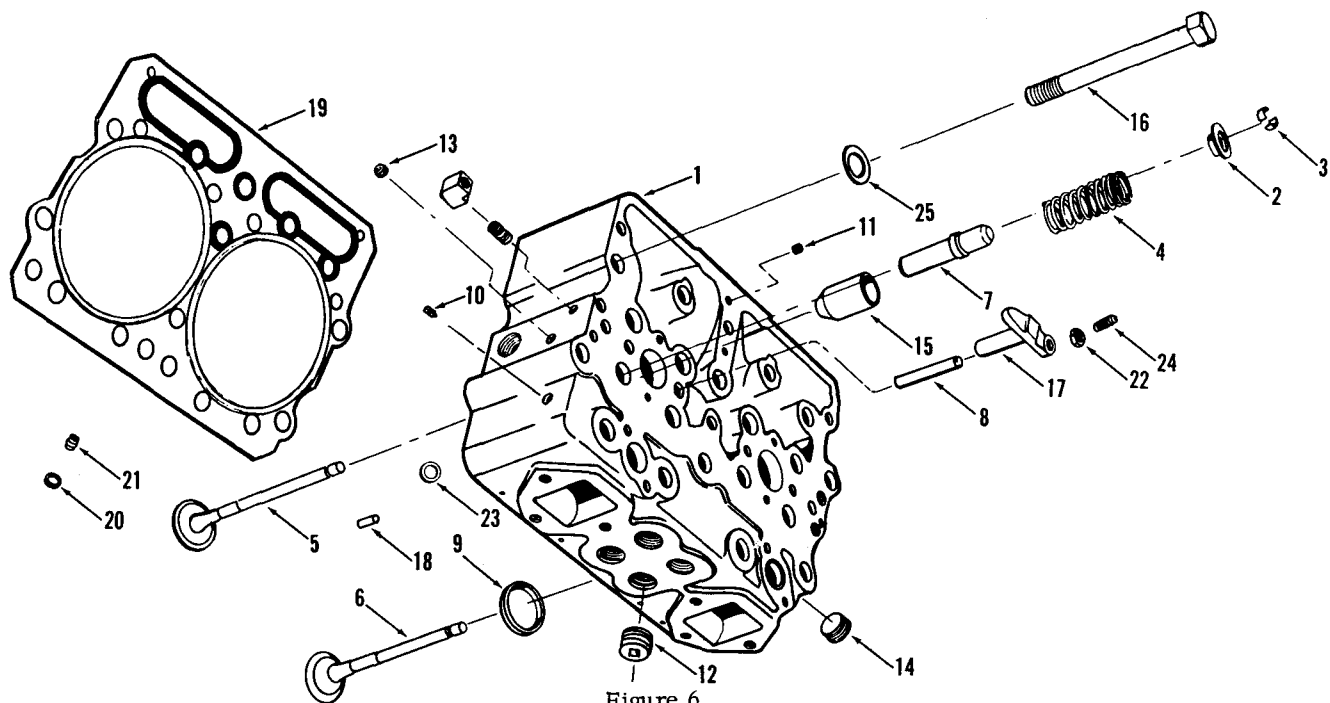


Figure 6
CYLINDER HEAD

Part Number	Part Name	No. Req.	Fig. No.	Ref. No.	Part Number	Part Name	No. Req.	Fig. No.	Ref. No.
BM-73334	Head, cylinder (152650)	3	6	1					
128879	Guide, valve spring	24	6	2					
127554	Half-collet, valve	48	6	3					
143907	Spring, valve	24	6	4					
145701	Valve, exhaust	12	6	5					
135957	Valve, intake	12	6	6					
BM-75335	Head, cylinder (less valves)	3							
147967	Guide, valve	24	6	7					
123558	Guide, crosshead valve	12	6	8					
127930	Insert, valve seat	24	6	9					
70459	Plug, fuse	3	6	10					
S-965-E	Plug, pipe	3	6	11					
S-962	Plug, pipe	2	6	12					
S-911-B	Plug, pipe	18	6	13					
S-995	Plug, pipe	18	6	14					
147056	Sleeve, injector	6	6	15					
130074	Capscrew, head to block	36	6	16					
123416	Crosshead, valve	12	6	17					
68445	Dowel, head to block	6	6	18					
BM-65261	Gasket, head (129978)	3	6	19					
132705	Grommet, water	24	6	20					
131168	Retainer, grommet	24	6	21					
S-273	Nut, crosshead adjusting	12	6	22					
134925	"O" Ring, lubricating pipe	3	6	23					
147389	Screw, crosshead adjusting	12	6	24					
69699	Washer, cylinder head capscrew	36	6	25					

PARTS INDENTED ARE INCLUDED IN THE PART UNDER WHICH THEY ARE INDENTED

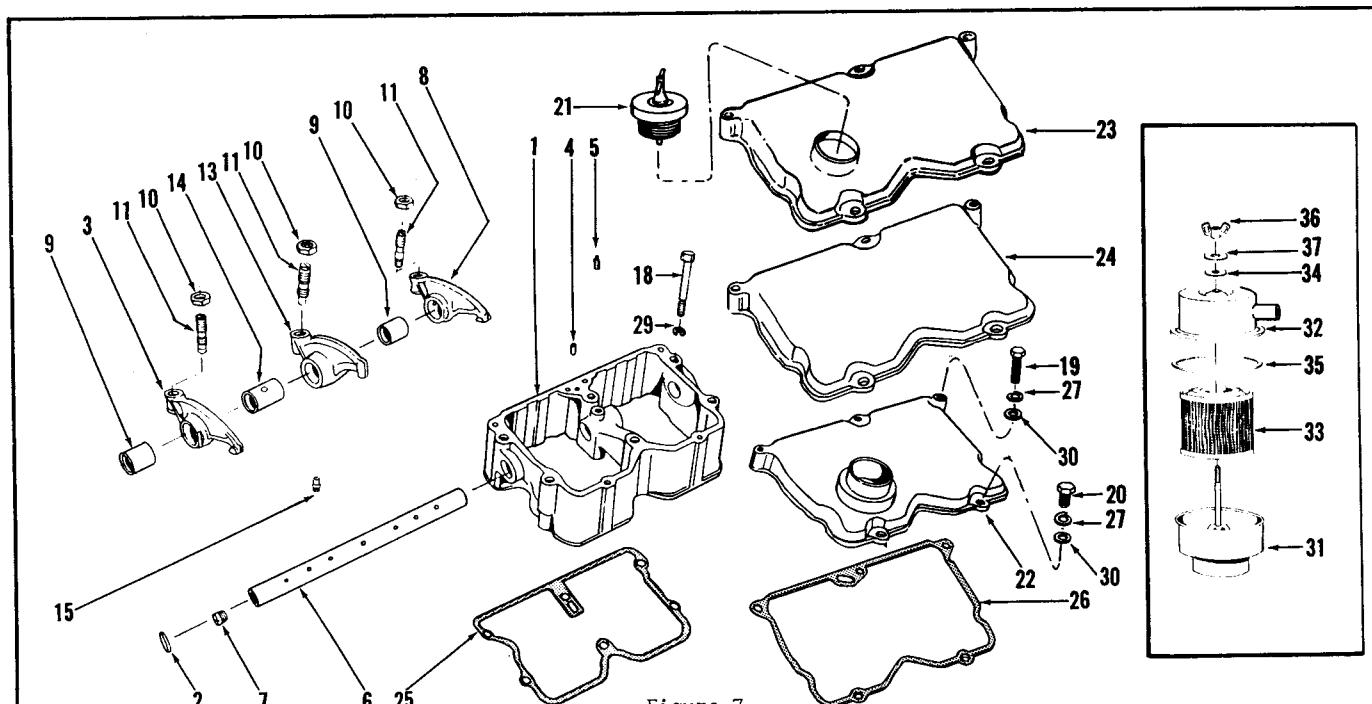


Figure 7
ROCKER LEVER HOUSING, COVER and BREATHER

Part Number	Part Name	No. Req.	Fig. No.	Ref. No.	Part Number	Part Name	No. Req.	Fig. No.	Ref. No.
BM-90515	Housing, rocker lever	3			BM-95154	Lever, injector	6		
BM-78589	Housing, rocker lever	3			BM-95144	Lever, injector (168801)	6	7	13
149627	Housing, rocker lever	3	7	1	140310	Bushing, lever	6	7	14
146260	Plug, expansion	3	7	2	152173	Socket, injector	6	7	15
62229	Plug, ventilator	3	7	4	S-212	Nut, adjusting screw	6	7	10
168319	Screw, Nyloc, rocker lever shaft	3	7	5	168306	Screw, adjusting	6	7	11
BM-68740	Shaft, rocker lever (140297)	3	7	6	COVERS				
161825	Plug, shaft	6	7	7	170226	Bracket, lifting	2	7	16
BM-95148	Lever, exhaust valve	3			120516	Capscrew, lifting bracket	4	7	17
BM-95143	Lever and bushing (168804)	3	7	8	150858	Capscrew, housing	10	7	18
140330	Bushing, lever	3	7	9	S-137	Capscrew, cover	9	7	19
S-212	Nut, adjusting screw	3	7	10	S-112	Capscrew, cover	6	7	20
168306	Screw, adjusting	3	7	11	101322	Cap, oil filler	1	7	21
BM-95149	Lever, exhaust valve				150326	Cover (front)	1	7	22
BM-95142	Lever and bushing (168802)	3	7	3	150327	Cover (center)	1	7	23
140330	Bushing, lever	3	7	9	149628	Cover (rear)	1	7	24
S-212	Nut, adjusting screw	3	7	10	130530	Gasket, rocker housing	3	7	25
168306	Screw, adjusting	3	7	11	149651	Gasket, cover	3	7	26
BM-95160	Lever, intake valve	3			S-604	Lockwasher (3/8")	15	7	27
BM-95157	Lever and bushing (168803)	3	7	8	S-608	Lockwasher, bracket (1/2")	4	7	28
140330	Bushing, lever	3	7	9	132756	Lockwasher	10	7	29
S-212	Nut, adjusting screw	3	7	10	S-602	Washer, plain	15	7	30
168306	Screw, adjusting	3	7	11	BREATHER				
BM-95159	Lever, intake valve	3			154272	Breather assembly	1		
BM-95158	Lever and bushing (168805)	3	7	3	155998	Body	1	7	31
140330	Bushing, lever	3	7	9	155997	Cover	1	7	32
S-212	Nut, adjusting screw	3	7	10	123716	Element	1	7	33
168306	Screw, adjusting	3	7	11	125015	Gasket, wing nut	1	7	34
					125019	Gasket, cover	1	7	35
					125017	Nut, wing	1	7	36
					125016	Washer	1	7	37

PARTS INDENTED ARE INCLUDED IN THE PART UNDER WHICH THEY ARE INDENTED

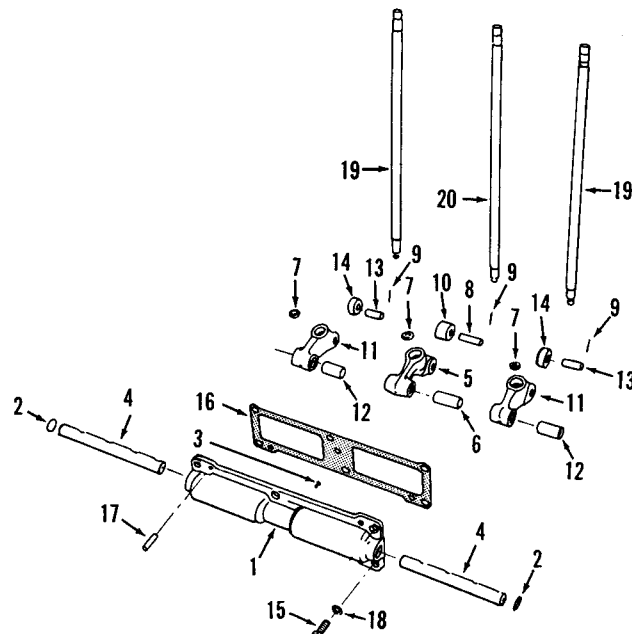


Figure 8
CAM FOLLOWER HOUSING AND PUSH RODS

Part Number	Part Name	No. Req.	Fig. No.	Ref. No.	Part Number	Part Name	No. Req.	Fig. No.	Ref. No.
BM-37625	Housing, cam follower	3							
BM-73976	Housing, cam follower	3							
44035	Housing, cam follower	3	8	1					
146261	Plug, expansion	6	8	2					
69736	Screw, shaft	6	8	3					
42443	Shaft, rocker lever	6	8	4					
BM-37621	Lever, injector (108169)	6							
BM-37496	Lever and bushing (108169)	6	8	5					
118377	Bushing, injector lever	6	8	6					
107738	Insert lever	6	8	7					
68512	Pin, roller	6	8	8					
118939	Pin, roll	6	8	9					
7348-2	Roller, injector cam	6	8	10					
BM-37634	Lever, intake and exhaust (120543)	12							
BM-37633	Lever and bushing (120543)	12	8	11					
118378	Bushing	12	8	12					
107738	Insert, lever	12	8	7					
68513	Pin, valve, cam roller	12	8	13					
118939	Pin, roll	12	8	9					
9260-1	Roller, valve cam	12	8	14					
S-129	Capscrew, housing to block	18	8	15					
120819	Gasket (.026")	As	8	16					
9266-A	Gasket (.007")	Req'd.	8	16					
68585	Dowel, housing to block	6	8	17					
S-604	Lockwasher	18	8	18					
BM-47778	Rod assembly, intake and exhaust	12	8	19					
BM-47779	Rod assembly, injector	6	8	20					

PARTS INDENTED ARE INCLUDED IN THE PART UNDER WHICH THEY ARE INDENTED

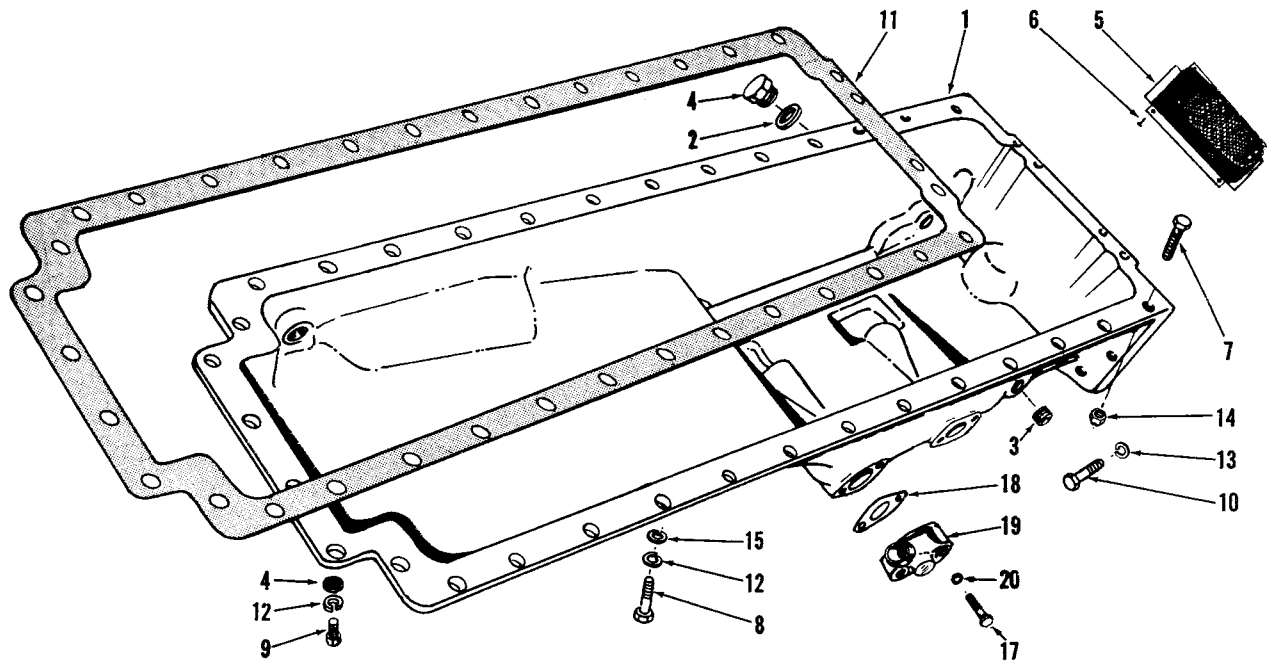


Figure 9
OIL PAN

Part Number	Part Name	No. Req.	Fig. No.	Ref. No.	Part Number	Part Name	No. Req.	Fig. No.	Ref. No.
BM-47713	Pan, oil (116895)	1	9	1	S-137	OIL SUCTION FLANGE	2	9	17
67183-B	Insert, helicoil (1/2")	1			67963	Capscrew, flange	1	9	18
67184-B	Insert, helicoil (3/8")	2			67955	Gasket, flange	1	9	19
67946	Gasket, by-pass valve	1	9	2	S-604	Flange, oil suction	1	9	20
S-915-A	Plug, pipe (1/2")	4	9	3		Lockwasher	2	9	
110907	Plug, oil drain	1	9	4					
20622	Screen, oil suction plate	1	9	5		DIPSTICK AND GAUGE BRACKET			
S-1354	Screw, suction screen	4	9	6					
	PAN MOUNTING PARTS				131998	Bracket, oil gauge	1		
67023	Bolt, oil pan	2	9	7	101368	Dipstick	1		
70349	Capscrew, pan to block	26	9	8	101322	Cap, oil filler	1		
103009	Capscrew, pan to gear cover	4	9	9	S-137	Capscrew	4		
105574	Capscrew, pan to rear cover	4	9	10	65274	Gasket	1		
5083	Gasket, pan to block	1	9	11	S-604	Lockwasher	4		
S-610	Lockwasher	30	9	12	101814	Tube, oil gauge	1		
S-605	Lockwasher, pan to gear cover	4	9	13					
S-230-A	Nut, pan to block	2	9	14					
S-622	Washer	30	9	15					
S-626	Washer, pan to gear cover	4	9	16					

PARTS INDENTED ARE INCLUDED IN THE PART UNDER WHICH THEY ARE INDENTED

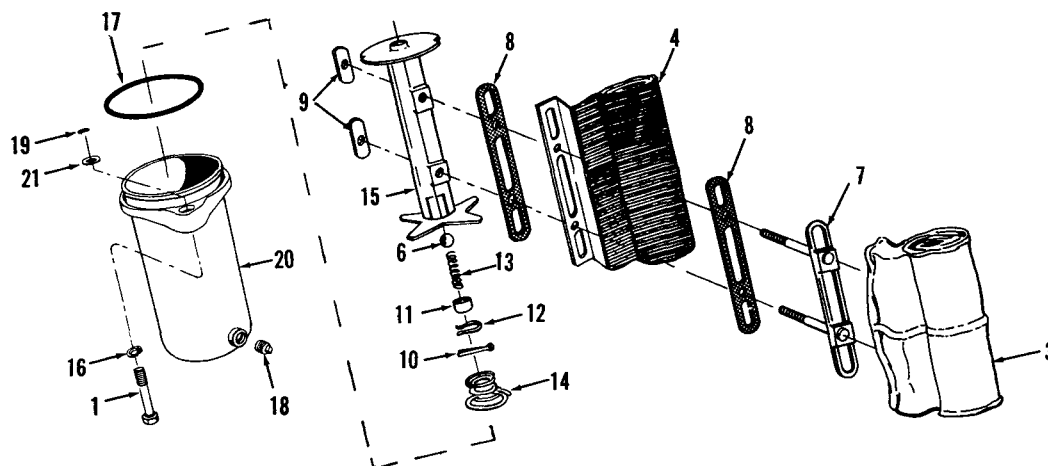


Figure 10
LUBRICATING OIL FILTER

6302077

Part Number	Part Name	No. Req.	Fig. No.	Ref. No.	Part Number	Part Name	No. Req.	Fig. No.	Ref. No.
BM-54270	Filter, oil	1							
135168	Capscrew, filter to pump	2	10	1					
S-1915-1	Element assembly	1	10						
S-1953	Bag, filter LF-502	1	10	3					
134729	Separator, bag	1	10	4					
128798	Spool assembly	1	10						
128805	Ball, by-pass relief	1	10	6					
128800	Clamp, bag	1	10	7					
128801	Gasket, bag	2	10	8					
128802	Nut, locking	2	10	9					
S-503	Pin, cotter	1	10	10					
128803	Retainer, spring	1	10	11					
128807	Ring, snap	1	10	12					
128804	Spring, by-pass, ball	1	10	13					
128806	Spring, spool	1	10	14					
128799	Spool	1	10	15					
S-608	Lockwasher	2	10	16					
116024	"O" Ring, shell to pump	1	10	17					
139090	Plug, drain	1	10	18					
135169	Ring, retaining	2	10	19					
250728	Shell assembly	1	10	20					
158208	Washer, plain	2	10	21					

PARTS INDENTED ARE INCLUDED IN THE PART UNDER WHICH THEY ARE INDENTED

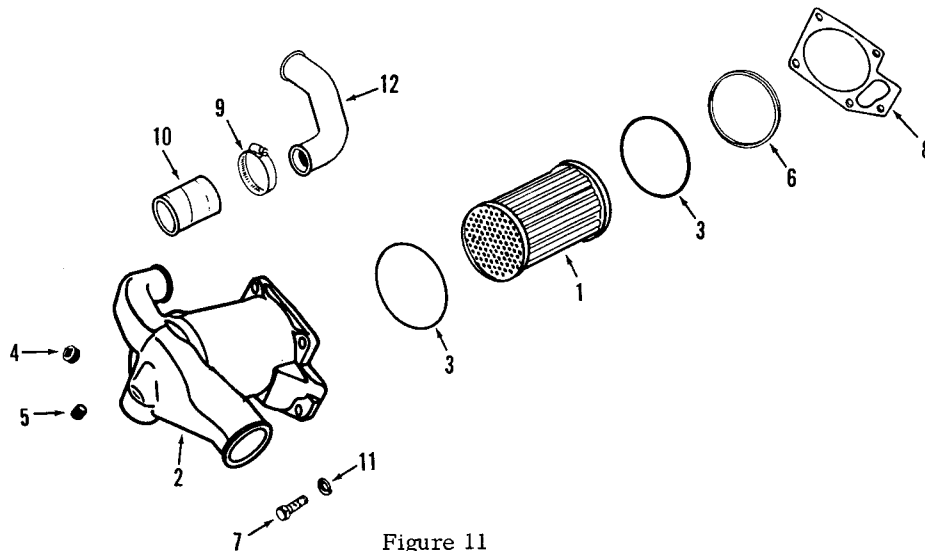


Figure 11
LUBRICATING OIL COOLER

Part Number	Part Name	No. Req.	Fig. No.	Ref. No.	Part Number	Part Name	No. Req.	Fig. No.	Ref. No.
BM-54320	Cooler assembly, oil	1							
110848	Element, cooler	1	11	1					
121778	Housing	1	11	2					
148293	"O" Ring	2	11	3					
S-995	Plug, pipe	1	11	4					
S-910-B	Plug, pipe	1	11	5					
110827	Retainer, "O" Ring	1	11	6					
S-103-D	Capscrew	5	11	7					
121779	Gasket	1	11	8					
43828-B	Clamp, hose	4	11	9					
63495	Hose	2	11	10					
S-604	Lockwasher	5	11	11					
21133	Pipe, by-pass	1	11	12					

PARTS INDENTED ARE INCLUDED IN THE PART UNDER WHICH THEY ARE INDENTED

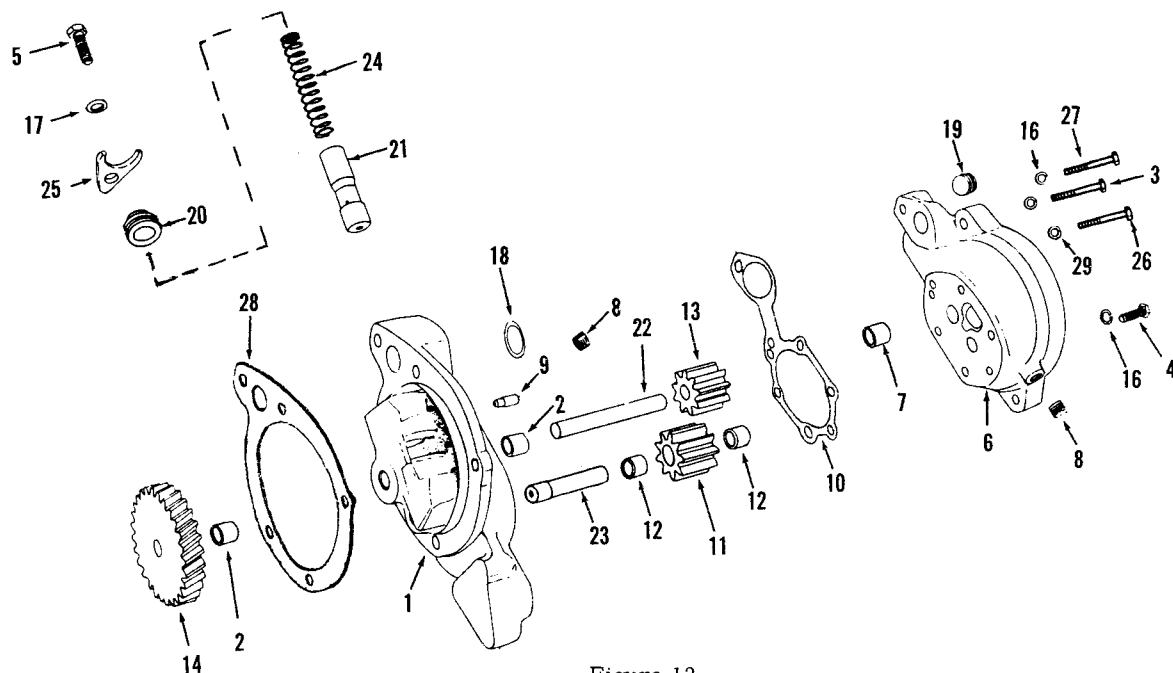


Figure 12
LUBRICATING OIL PUMP

Part Number	Part Name	No. Req.	Fig. No.	Ref. No.	Part Number	Part Name	No. Req.	Fig. No.	Ref. No.
BM-70204	Pump, oil	1			HS1602506MS	Lubricating Oil Hose	1		
BM-70198	Body and bushing (142739)	1	12	1	67950	Hose, pump to pan	1		
68586	Bushing	2	12	2		Clamp, hose	1		
S-169-B	Capscrew	1	12	3					
108707	Capscrew	5	12	4					
S-109	Capscrew	1	12	5					
BM-55051	Cover and head (126157)	1	12	6					
68586	Bushing	1	12	7					
S-908	Plug, pipe	2	12	8					
69519	Dowel, washer	1	12	9					
130972	Gasket, body	1	12	10					
BM-20443	Gear, idler (68589)	1	12	11					
68586	Bushing	2	12	12					
68588	Gear	1	12	13					
125988	Gear, main drive	1	12	14					
109319	Lockplate	1							
S-604	Lockwasher	5	12	16					
S-610	Lockwasher	1	12	17					
69043	"O" Ring	1	12	18					
S-995	Plug, pipe	1	12	19					
134596	Plug, by-pass valve	1	12	20					
127558	Plunger, regulator	1	12	21					
126284	Shaft, drive	1	12	22					
126289	Shaft, idler	1	12	23					
68274	Spring, by-pass valve	1	12	24					
126304	Yoke, retaining	1	12	25					
S-101-A	Capscrew, pump to block	3	12	26					
S-119-C	Capscrew, pump to block	1	12	27					
121907	Gasket, pump to block	1	12	28					
S-610	Lockwasher	4	12	29					

PARTS INDENTED ARE INCLUDED IN THE PART UNDER WHICH THEY ARE INDENTED

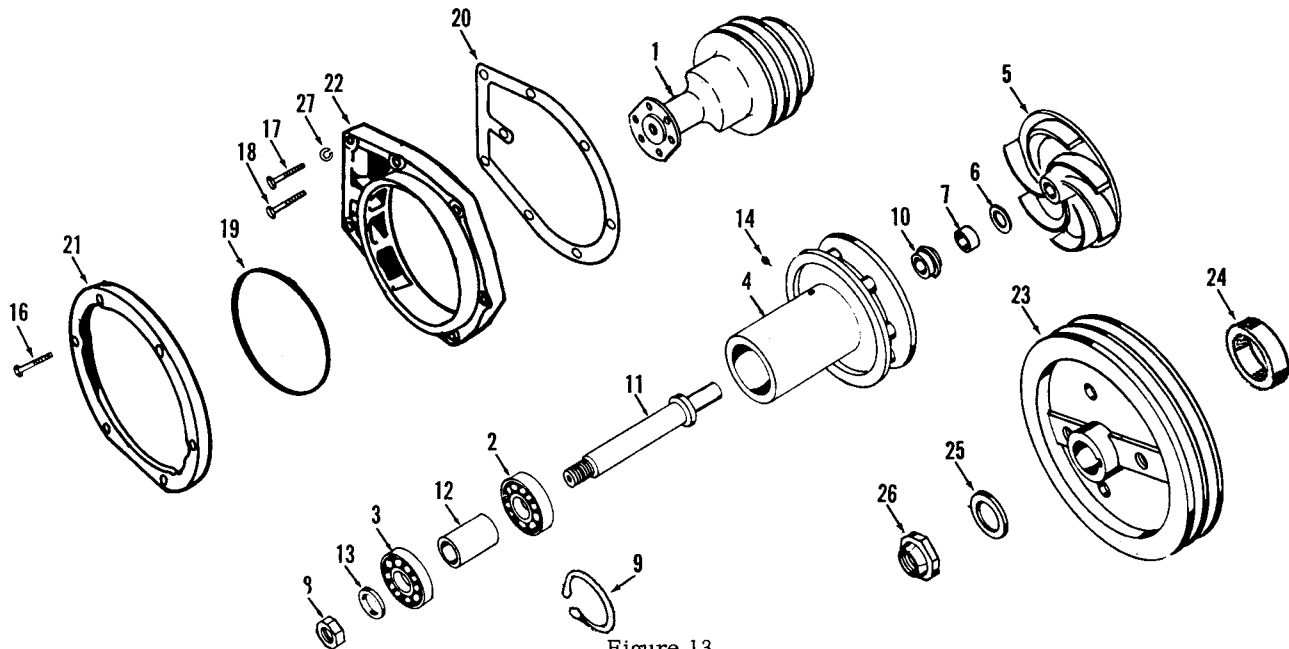


Figure 13
WATER PUMP

Part Number	Part Name	No. Req.	Fig. No.	Ref. No.	Part Number	Part Name	No. Req.	Fig. No.	Ref. No.
BM-78363	Pump, water (with pulley)	1			BM-78323	Pulley, fan and water pump drive (151112)	1	13	23
151156	Pulley, water pump	1	13	1					
BM-73349	Pump, water (less pulley)	1			68680-1	Sleeve, pulley	1	13	24
115512	Bearing, ball	1	13	2	S-690	Washer, plain	1	13	25
168569	Bearing, ball	1	13	3	105297	Locknut	1	13	26
130175	Body, pump	1	13	4					
BM-71656	Impeller (122295)	1	13	5					
143913	Film, bonding	1	13	6					
135079	Seat, impeller (ceramic)	1	13	7					
115508	Nut, huglock	1	13	8					
S-16255	Ring, retaining	1	13	9					
144306	Seal, pump	1	13	10					
115501	Shaft, pump	1	13	11					
67509	Spacer	1	13	12					
115550	Washer, plain	1	13	13					
S-911-B	Plug, pipe	1	13	14					
151139	Belt	2							
105831	Capscrew, pump	6	13	16					
S-165	Capscrew, support	2	13	17					
106549	Capscrew, support	1	13	18					
130240	Gasket, pump	1	13	19					
130226	Gasket, support	1	13	20					
130141	Ring, clamp	1	13	21					
130227	Support	1	13	22					
S-604	Lockwasher	8	13	27					

PARTS INDENTED ARE INCLUDED IN THE PART UNDER WHICH THEY ARE INDENTED

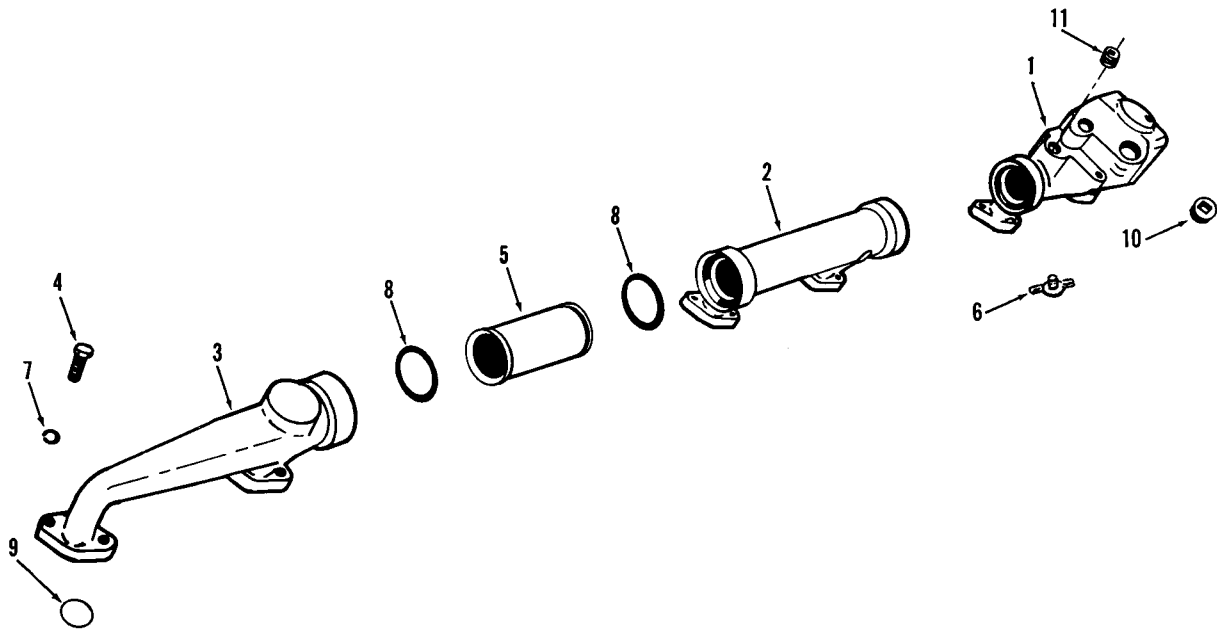


Figure 14
WATER MANIFOLD

Part Number	Part Name	No. Req.	Fig. No.	Ref. No.	Part Number	Part Name	No. Req.	Fig. No.	Ref. No.
130117	Manifold, water (front)	1	14	1					
130118	Manifold, water (center)	1	14	2					
130119	Manifold, water (rear)	1	14	3					
S-103-D	Capscrew	12	14	4					
130394	Coupling, manifold	2	14	5					
S-962-E	Cock, drain	1	14	6					
S-604	Lockwasher	12	14	7					
70624	"O" Ring, coupling	4	14	8					
148203	Ring, sealing	6	14	9					
S-995	Plug, pipe	1	14	10					
S-915-A	Plug, pipe	1	14	11					

PARTS INDENTED ARE INCLUDED IN THE PART UNDER WHICH THEY ARE INDENTED

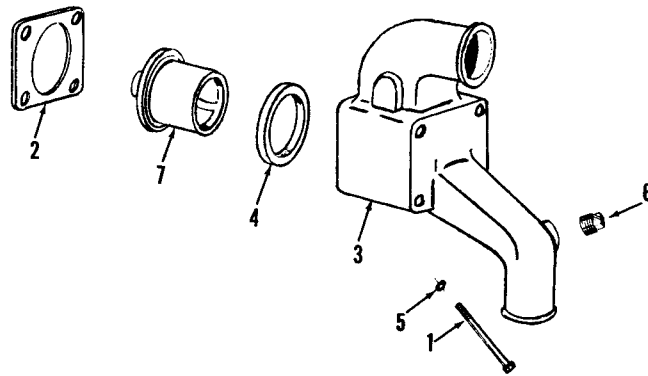


Figure 15
THERMOSTAT HOUSING

Part Number	Part Name	No. Req.	Fig. No.	Ref. No.	Part Number	Part Name	No. Req.	Fig. No.	Ref. No.
S-105	Capscrew	4	15	1					
70441	Gasket, housing	1	15	2					
BM-90637	Housing, thermostat (161380)	1	15	3					
135600	Seal, housing	1	15	4					
S-604	Lockwasher	4	15	5					
S-908	Plug, pipe	1	15	6					
135675	Thermostat 170° to 185°	1	15	7					

PARTS INDENTED ARE INCLUDED IN THE PART UNDER WHICH THEY ARE INDENTED

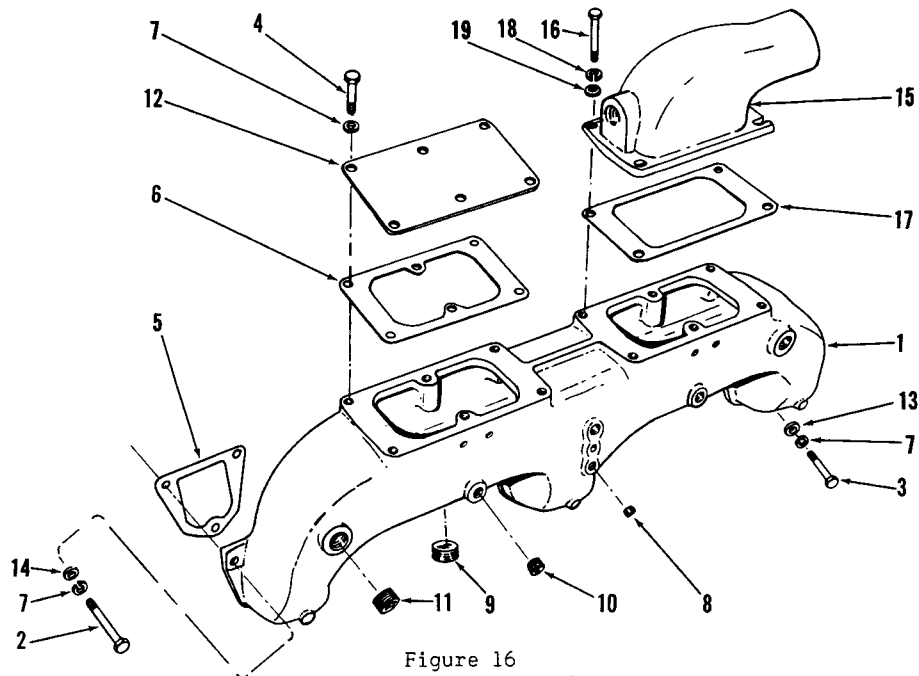


Figure 16
AIR INTAKE MANIFOLD

Part Number	Part Name	No. Req.	Fig. No.	Ref. No.	Part Number	Part Name	No. Req.	Fig. No.	Ref. No.
141761	Manifold, air intake	1	16	1					
S-103-D	Capscrew	6	16	2					
108707	Capscrew	3	16	3					
S-112	Capscrew	6	16	4					
130653	Gasket	3	16	5					
149819	Gasket	1	16	6					
S-604	Lockwasher	10	16	7					
S-911-B	Plug, pipe (1/8")	2	16	8					
S-962	Plug, pipe (1")	1	16	9					
S-910-B	Plug, pipe (1/4")	2	16	10					
S-915-A	Plug, pipe (1/2")	2	16	11					
144257	Plate, cover	1	16	12					
63842	Washer	3	16	13					
S-602	Washer	6	16	14					
	CONNECTION								
135893	Connection, intake	1	16	15					
S-103-D	Capscrew	4	16	16					
66881	Gasket	1	16	17					
S-604	Lockwasher	4	16	18					
S-602	Washer	4	16	19					

PARTS INDENTED ARE INCLUDED IN THE PART UNDER WHICH THEY ARE INDENTED

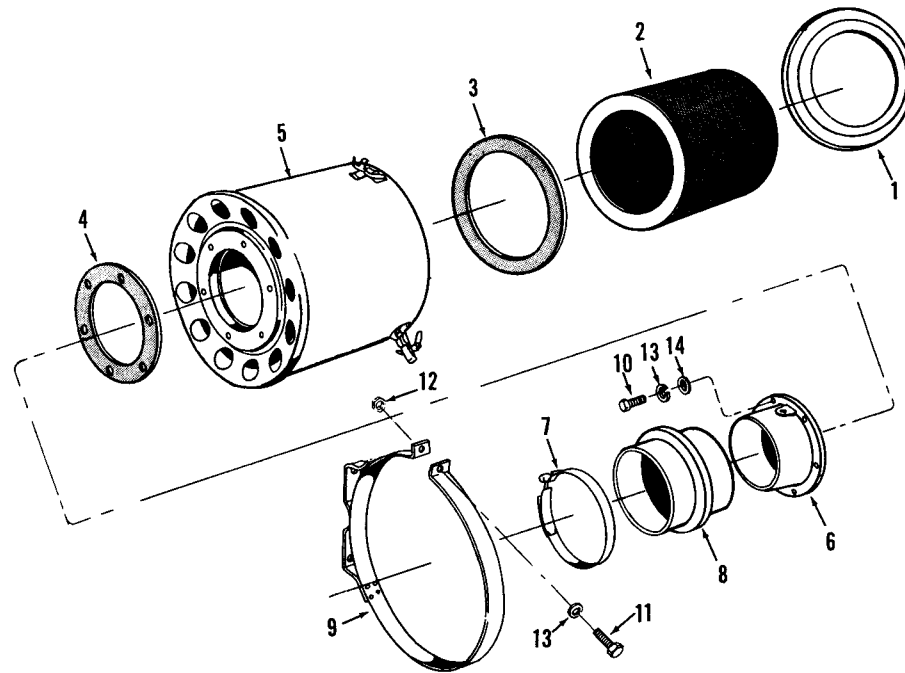


Figure 17

AIR CLEANER

Part Number	Part Name	No. Req.	Fig. No.	Ref. No.	Part Number	Part Name	No. Req.	Fig. No.	Ref. No.
106833	Cleaner, air (12" diameter)	1							
107135	Cover, shell	1	17	1					
106837	Element assembly	1	17	2					
107136	Gasket, element	1	17	3					
107137	Gasket, flange	1	17	4					
107134	Shell, cleaner	1	17	5					
106126	Adapter, air cleaner	1	17	6					
125741	Clamp, hose	4	17	7					
103808	Hose, flexible	2	17	8					
105916	Strap, cleaner	2	17	9					
S-115	Capscrew	6	17	10					
S-111	Capscrew	2	17	11					
S-221	Nut	2	17	12					
S-605	Washer	8	17	13					
S-626	Washer	6	17	14					

PARTS INDENTED ARE INCLUDED IN THE PART UNDER WHICH THEY ARE INDENTED

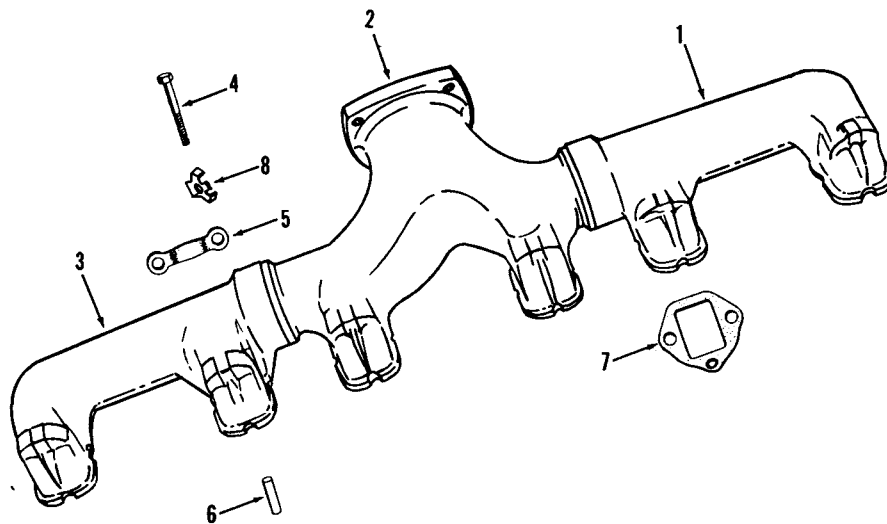
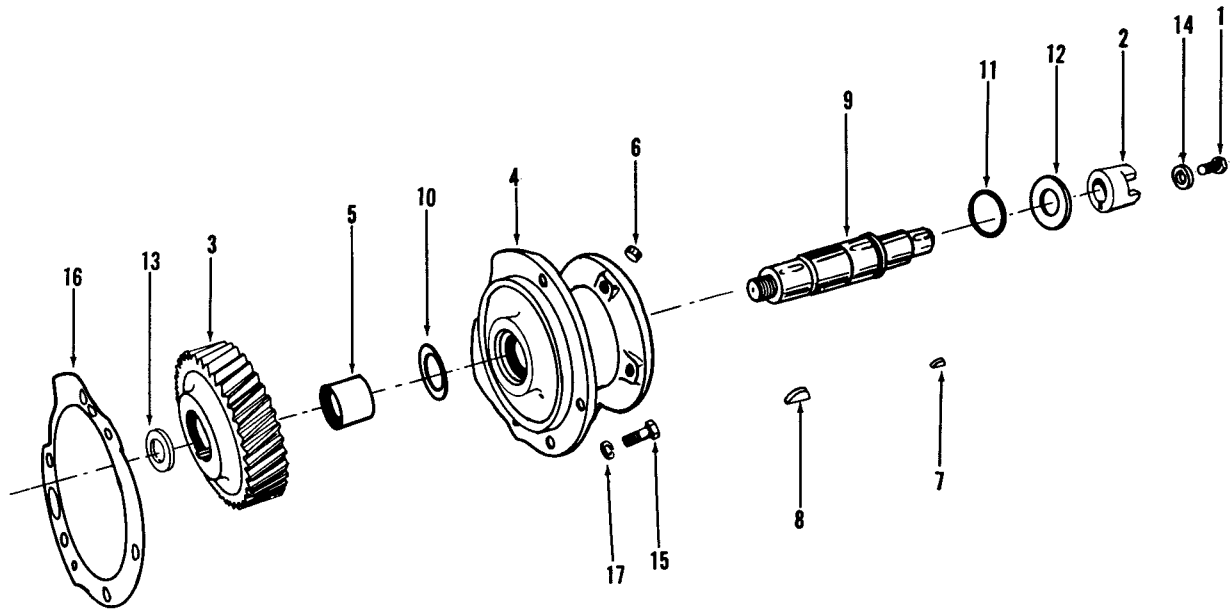


Figure 18
EXHAUST MANIFOLD

Part Number	Part Name	No. Req.	Fig. No.	Ref. No.	Part Number	Part Name	No. Req.	Fig. No.	Ref. No.
133026	Manifold, exhaust (front)	1	18	1					
133027	Manifold, exhaust (center)	1	18	2					
133028	Manifold, exhaust (rear)	1	18	3					
110266	Capscrew, manifold	12	18	4					
67360	Clamp, manifold	6	18	5					
105199	Dowel, manifold	6	18	6					
132977	Gasket, manifold	6	18	7					
114638	Lockplate	12	18	8					

PARTS INDENTED ARE INCLUDED IN THE PART UNDER WHICH THEY ARE INDENTED



FUEL PUMP DRIVE

Part Number	Part Name	No. Req.	Ref. No.	Part Number	Part Name	No. Req.	Ref. No.
BM-94777	Drive, fuel pump	1					
129510	Capscrew	1	1				
158826	Coupling	1	2				
121933	Gear, drive housing	1	3				
BM-53987	Housing (121936)	1	4				
116391	Bushing, housing	1	5				
S-911-B	Plug, pipe	1	6				
69550	Key, shaft	2	7				
S-316	Key, shaft	1	8				
170658	Shaft, drive	1	9				
116388	Washer, thrust	1	10				
116389	Washer, thrust	1	11				
116390	Washer, clamping	1	12				
S-690	Washer, plain	1	13				
170664	Washer	1	14				
S-101-A	Capscrew	5	15				
121937	Gasket	1	16				
S-610	Lockwasher	5	17				

PARTS INDENTED ARE INCLUDED IN THE PART UNDER WHICH THEY ARE INDENTED

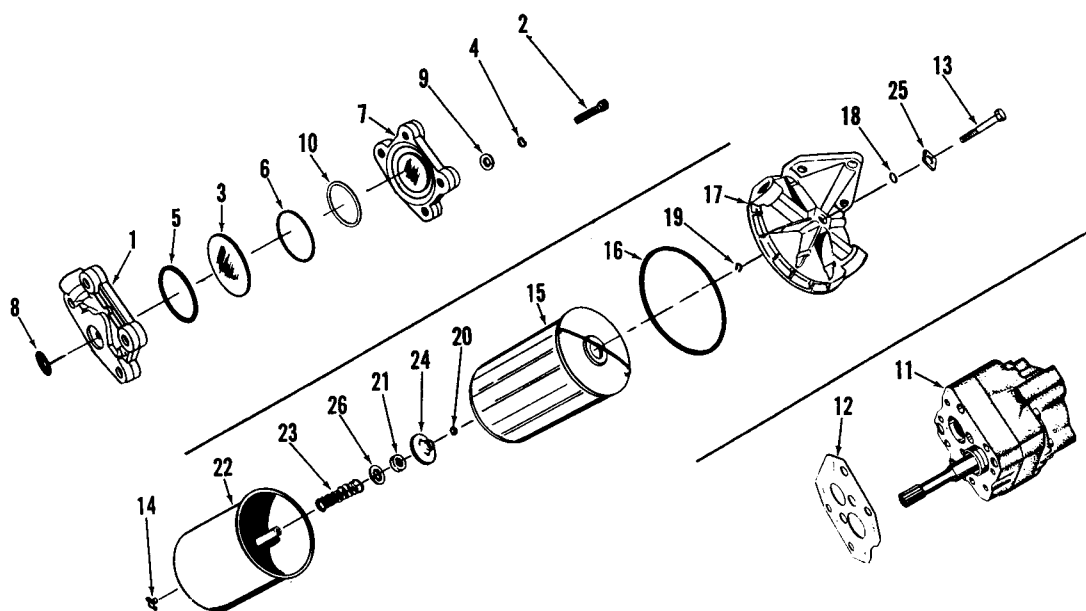


Figure 20
FUEL PUMP DAMPER, GEAR PUMP and FILTER

Part Number	Part Name	No. Req.	Fig. No.	Ref. No.	Part Number	Part Name	No. Req.	Fig. No.	Ref. No.
PT FUEL SYSTEM					FUEL FILTER				
Each Cummins PT Fuel Pump is calibrated to obtain the best performance and fuel economy for your engine. Your Cummins Distributor or Dealer has the special tools required for complete rebuild and calibration. Caution: do not disturb the fuel pressure settings or the throttle screw settings, as serious damage to your engine may result.					151940	Filter, fuel	1		
Only PT Fuel System parts which can be replaced without pump calibration are listed here. Your Cummins Distributor will record the specific part number of your complete PT Fuel Pump in the front of this book.					121960	Capscrew, head to shell	1	20	13
					S-962-E	Cock, drain	1	20	14
					141986	Decal, filter	1		
					139097	Element (FF-108)	1	20	15
					151881	Gasket, head to shell	1	20	16
					251128	Head, filter	1	20	17
					134736	"O" ring, capscrew	1	20	18
					135169	Ring, grip, capscrew	1	20	19
					251131	Ring, grip, post	1	20	20
					151884	Seal, pilot	1	20	21
					251091	Shell and post	1	20	22
					151885	Spring, filter	1	20	23
					151920	Support, filter element	1	20	24
					251081	Washer, capscrew	1	20	25
					S-658	Washer, plain	1	20	26
					129866	Connection, straight	1		
					129859	Connection, elbow	1		
					129858	"O" ring	1		
FUEL PUMP DAMPER									
BM-76340	Damper, fuel pump	1							
153336	Body, damper	1	20	1					
171545	Capscrew	4	20	2					
139834	Diaphragm	1	20	3					
S-698	Lockwasher	4	20	4					
139988	"O" ring	1	20	5					
100099	"O" ring	1	20	6					
153338	Plate, damper	1	20	7					
151900	Seal	1	20	8					
70704	Washer	4	20	9					
160514	Washer, nylon	1	20	10					
GEAR PUMP									
BM-90270	Gear pump 3/4" (R.H.)	1	20	11					
139290	Gasket, pump	1	20	12					

PARTS INDENTED ARE INCLUDED IN THE PART UNDER WHICH THEY ARE INDENTED

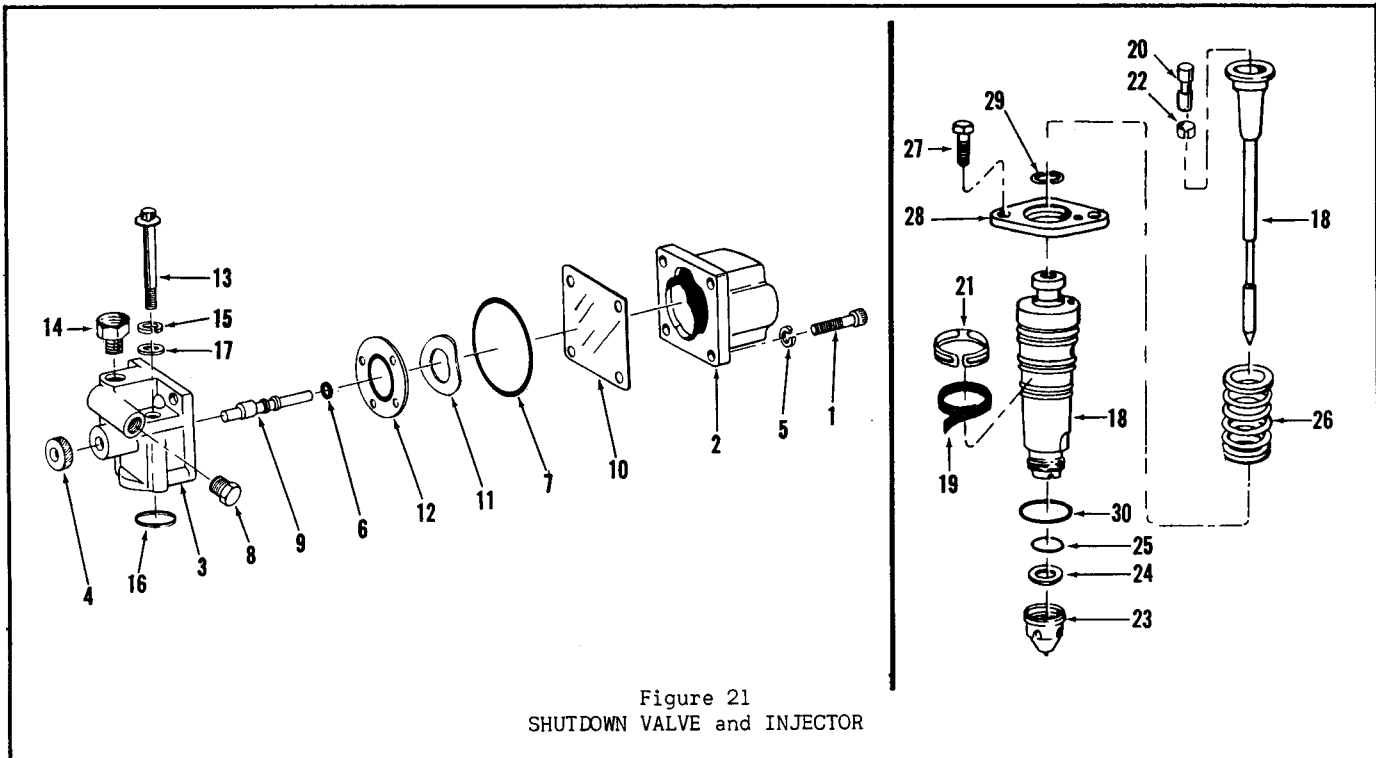


Figure 21
SHUTDOWN VALVE and INJECTOR

Part Number	Part Name	No. Req.	Fig. No.	Ref. No.	Part Number	Part Name	No. Req.	Fig. No.	Ref. No.
BM-69979	Valve, shutdown (24 volt)	1				INJECTOR			
S-1214	Capscrew, coil to housing	4	21	1					
134074	Coil	1	21	2	BM-73316	Injector	6		
129826	Housing, shutdown valve	1	21	3	BM-72887	Body and plunger	6	21	18
129838	Knob, manual override	1	21	4	136042	Clamp, injector screen	6	21	19
S-607	Lockwasher, coil to housing	4	21	5	146621	Link, injector	6	21	20
114791	"O" ring, manual override shaft	1	21	6	136749	Screen	6	21	21
129888	"O" ring, coil to housing	1	21	7	148504	Sleeve, plunger	6	21	22
70295	Plug, pipe	1	21	8	BM-68672	Cup and gasket (142467)	6	21	23
143679	Shaft, manual override	1	21	9	62409	Gasket, cup	6	21	24
129839	Shield, fuel	1	21	10	70776	"O" ring, cup	6	21	25
129768	Spring	1	21	11	128040	Spring	6	21	26
129827	Valve	1	21	12	S-102	Capscrew	12	21	27
171546	Capscrew, valve to fuel pump	2	21	13	162397	Clamp, injector	6	21	28
S-1027	Connection	1	21	14	139153	Collet, half	12	21	29
S-698	Lockwasher	2	21	15	101754	"O" ring, body	24	21	30
154087	Ring, sealing	1	21	16					
67684	Washer, valve to fuel pump	2	21	17					
	FUEL TUBING								
70772-C	Capscrew, springtite	2							
70467	Clip, fuel line	1							
70817	Connection, straight	2							
147100	Crossover, fuel	1							
S-1036	Elbow	2							
S-945	Nipple	2							
S-965-E	Plug, pipe	4							
S-911-B	Plug, pipe	10							
152946	Ring, sealing	4							
144733	Tube, fuel supply	1							

PARTS INDENTED ARE INCLUDED IN THE PART UNDER WHICH THEY ARE INDENTED

Part Number	Part Name	No. Req.	Fig. No.	Ref. No.	Part Number	Part Name	No. Req.	Fig. No.	Ref. No.
FLYWHEELS, RING GEARS and FLYWHEEL HOUSINGS									
Flywheels, flywheel housings and ring gears have been designed to adapt the Cummins Diesel to hundreds of different installations. For this reason, these assemblies are not listed.									
Your Cummins Distributor will record flywheel, flywheel housing and ring gear part numbers in the back of this book.									
GASKET SETS									
BM-68569	Engine gasket set	1							
BM-77915	Cylinder head gasket set	1							
BM-68356	Fuel pump gasket set	1							
ELECTRICAL EQUIPMENT									
Electrical equipment is not manufactured by the Cummins Engine Company, Inc. Complete service for electrical equipment may be obtained from the manufacturers: The Delco-Remy Company at Anderson, Indiana; The Leece-Neville Company at Cleveland, Ohio; or from their service stations. Address of nearest service station may be obtained from the manufacturer.									
GENERATOR									
121924	Bracket, generator	1							
121925	Bracket, generator	1							
42568	Baffle, fan	1							
178436	Belt	1							
108707	Capscrew	4							
S-112	Capscrew	1							
106549	Capscrew	1							
S-155	Capscrew	2							
S-604	Lockwasher	6							
S-610	Lockwasher	2							
S-606	Lockwasher	4							
139497	Pulley	1							
S-1319	Screw	4							
S-602	Washer	3							
STARTER									
S-103-A	Capscrew	3							
S-603	Lockwasher	3							
9245	Spacer	1							
43604	Starting motor	1							
66733	Gauge	1							
S-2668	Joint, ball	2							
102846	Key	1							
119898	Switch, series parallel	1							

PARTS INDENTED ARE INCLUDED IN THE PART UNDER WHICH THEY ARE INDENTED

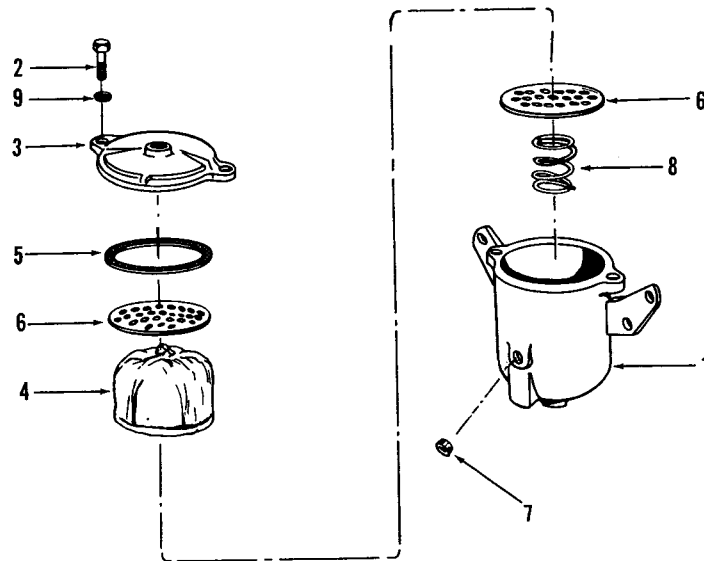
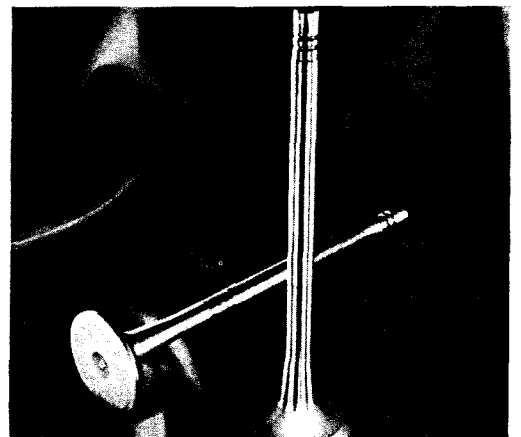
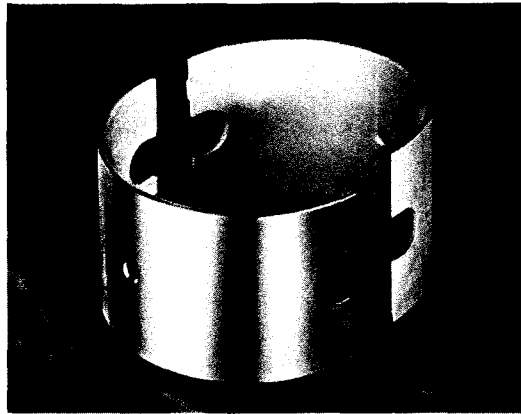


Figure 23
CORROSION RESISTOR

Part Number	Part Name	No. Req.	Fig. No.	Ref. No.	Part Number	Part Name	No. Req.	Fig. No.	Ref. No.
132716	Assembly, corrosion resistor	1							
132717	Body	1	23	1					
70223	Capscrew	2	23	2					
132718	Cover	1	23	3					
135970	Decal	1							
132732	Element	1	23	4					
132730	Gasket	1	23	5					
132719	Plate	2	23	6					
139090	Plug	2	23	7					
132731	Spring	1	23	8					
70233	Washer	2	23	9					
S-983	Bushing	1							
S-145	Capscrew (1/2-13 UNC-21, 1 1/4")	2							
134325	Connector, elbow	2							
43828	Clamp, hose	4							
S-913-A	Elbow, pipe	1							
64998	Hose (10 1/2")	4							
64998-H	Hose (14 1/2")	1							
S-608	Lockwasher (1/2")	2							
S-915	Nipple, pipe	1							
158098	Valve	2							
S-670	Washer (17/32")	2							

PARTS INDENTED ARE INCLUDED IN THE PART UNDER WHICH THEY ARE INDENTED

FOR PERFORMANCE YOU CAN COUNT ON



SPECIFY CUMMINS REPLACEMENT PARTS