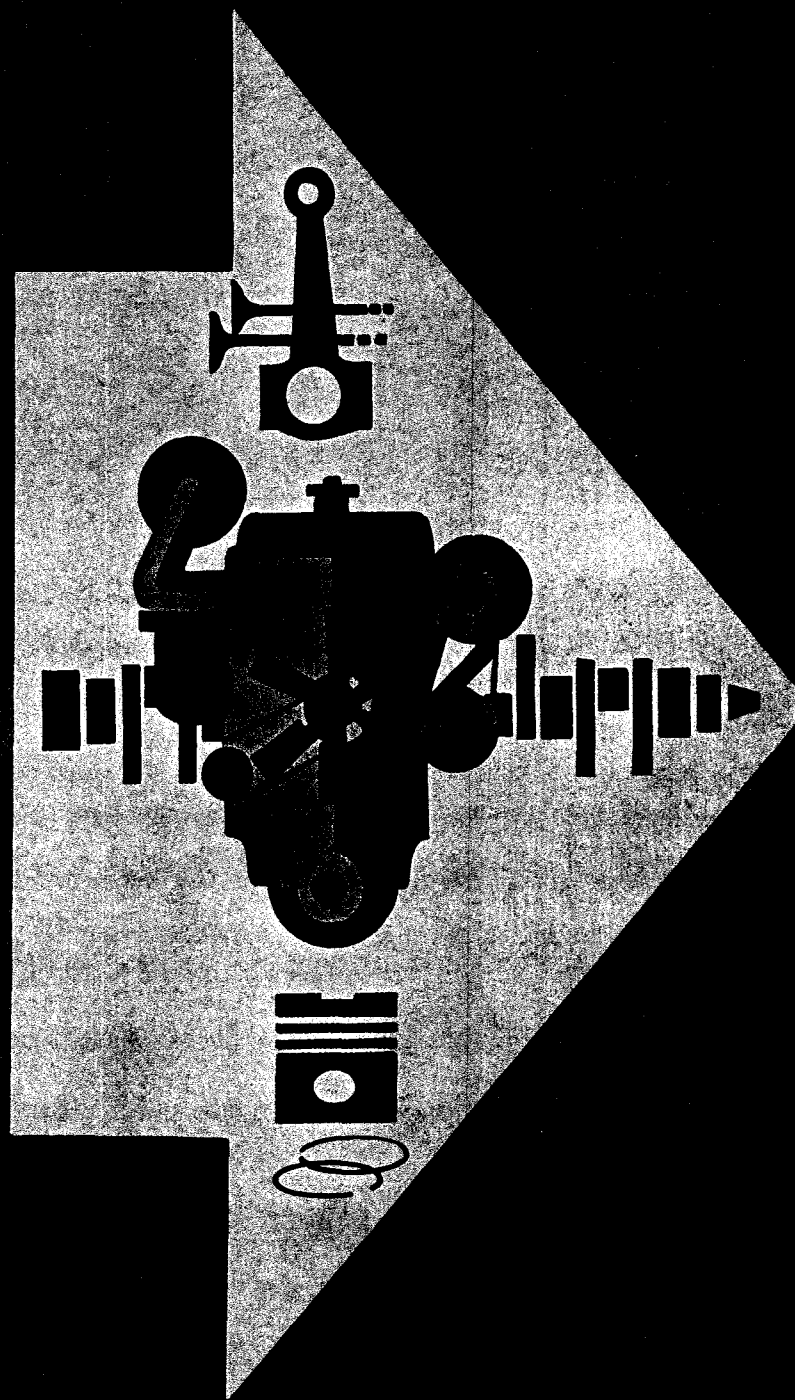




# PARTS BOOK

JN-130-CI MODEL

BULLETIN 967021



# PARTS ORDERING FOR.....

Genuine Cummins Parts and service facilities are world-wide. There are more than 900 Cummins Sales and Service locations in the principal cities of the United States and Canada, and more than 200 Sales and Service locations situated elsewhere throughout the free world. Each distribution outlet is thoroughly equipped with technical data, factory-trained mechanics, modern equipment and a full, adequate stock of Genuine Cummins Parts.

For quicker and better service, your parts requirements should be ordered from your nearest authorized Cummins Distributor or Dealer. At any of the locations prompt, intelligent, courteous service is a basic trademark. Each is ready and eager to help in every possible way through personal contact or through the mail — at your convenience.

The satisfactory ordering and receiving of parts by the purchaser is greatly dependent upon the proper use of available information. In order that all avoidable errors may be eliminated, the following instructions are offered as the purchaser's guide:

1. Write your order clearly, using a typewriter if possible.
2. Be sure to list the correct part number. If in doubt as to the correct part number, state the model and serial number of the engine on which the part is to be used. Part numbers are usually located in various places on the part itself.
3. When possible, arrange your purchase order in part number numerical sequence.
4. Always specify shipping instructions — "Best Way" is satisfactory if you have no preference.
5. State your company name and shipping address clearly.

Genuine Cummins Parts mean QUALITY! They're designed and engineered to fit best in your Cummins Diesel. Each part is made of the highest quality material — on the most accurate of machines — by the top craftsmen of the trade.

You can be sure a Genuine Cummins Part will fit better — do the job better — lessen the chances of costly breakdown. When you buy replacement parts, buy quality. Buy Genuine Cummins Parts!

YOU OWN THE BEST . . . REPAIR WITH THE BEST

# JN-130-CI DIESEL ENGINE

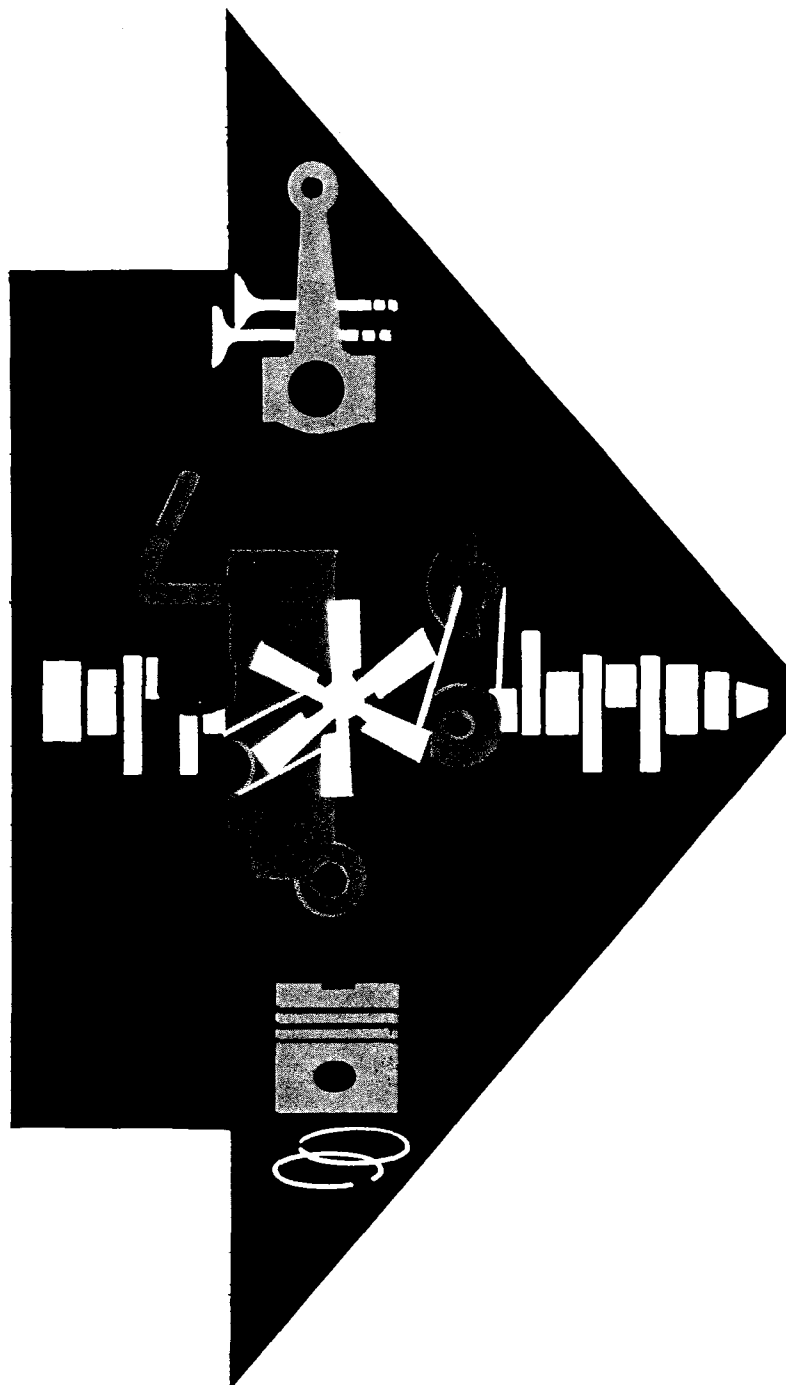
CUMMINS ENGINE COMPANY, INC.

COLUMBUS, INDIANA

PRINTED IN U. S. A.

PRICE \$ .25

COPYRIGHT 1964



## SPECIAL PARTS

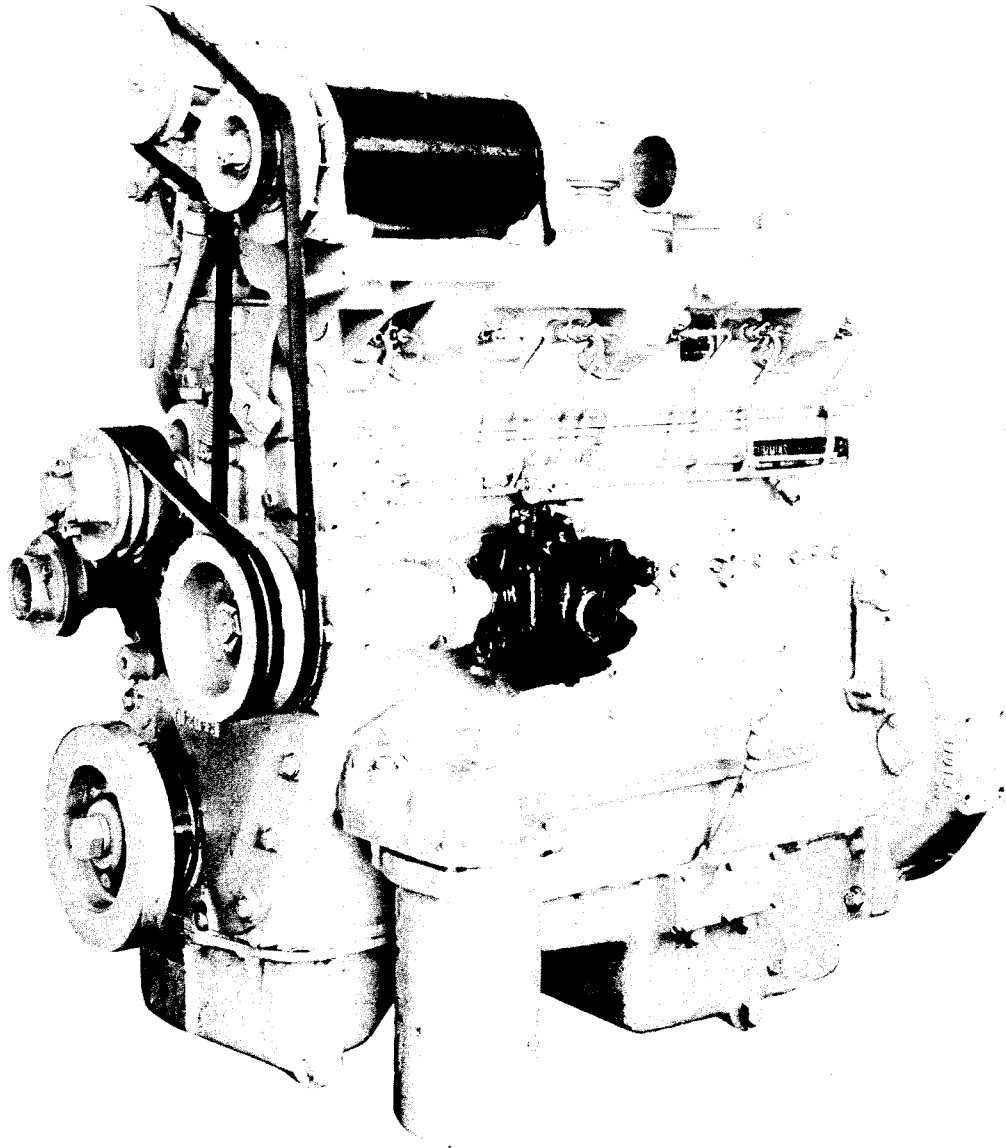
This Parts Book includes those parts that are normally used on our standard engine model. Special Parts peculiar to engine serial No. \_\_\_\_\_ are listed on the form below. To make certain you have ordered correct parts, refer to this form before submitting Parts Order.

[illegible]

Cummins Distributor \_\_\_\_\_

# CONTENTS

DESCRIPTION	PAGE
Cylinder Block - - - - -	1
Camshaft Bushing, Cylinder Liner	
Crankshaft, Main Bearings and Vibration Damper - - - - -	2
Connecting Rod, Piston and Rings - - - - -	3
Rear Cover and Camshaft - - - - -	4
Pushrods and Tappets - - - - -	5
Rocker Levers - - - - -	6
Cylinder Head - - - - -	7
Cylinder Head Cover - - - - -	8
Crankcase Breather	
Gear Cover - - - - -	9
Oil Pan, Dipstick and Tube - - - - -	10
Lubricating Oil Pump - - - - -	11
Lubricating Oil Filter - - - - -	12
Water Pump and Pulley - - - - -	13
Fan Hub - - - - -	14
Lubricating Oil Cooler - - - - -	15
Thermostat Housing and Water Connection - - - - -	16
Air Intake Manifold and Connection - - - - -	17
Exhaust Manifold - - - - -	18
Air Cleaner - - - - -	19
PT Fuel System - - - - -	20 - 21
Fuel Pump Damper, Gear Pump and Fuel Filter, Shutdown Valve, Fuel Tubing and Injector	
Fuel Pump Drive - - - - -	22
Lubricating Oil By-Pass Filter - - - - -	23
Flywheel, Ring Gear, Flywheel Housing, Gasket Sets and Electrical Equipment - - - - -	24



CUMMINS JN-130-CI DIESEL ENGINE

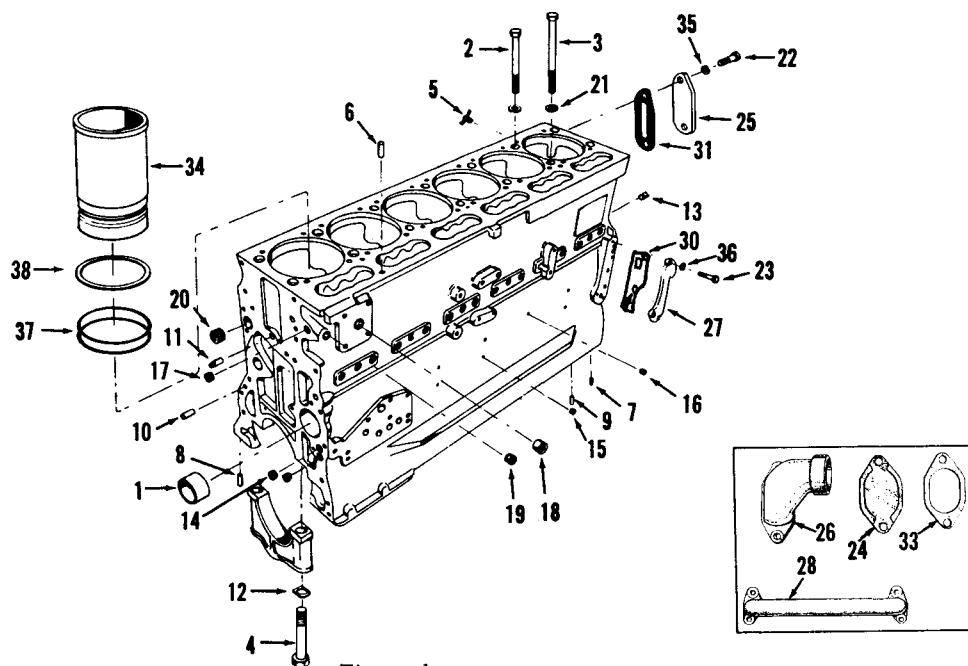
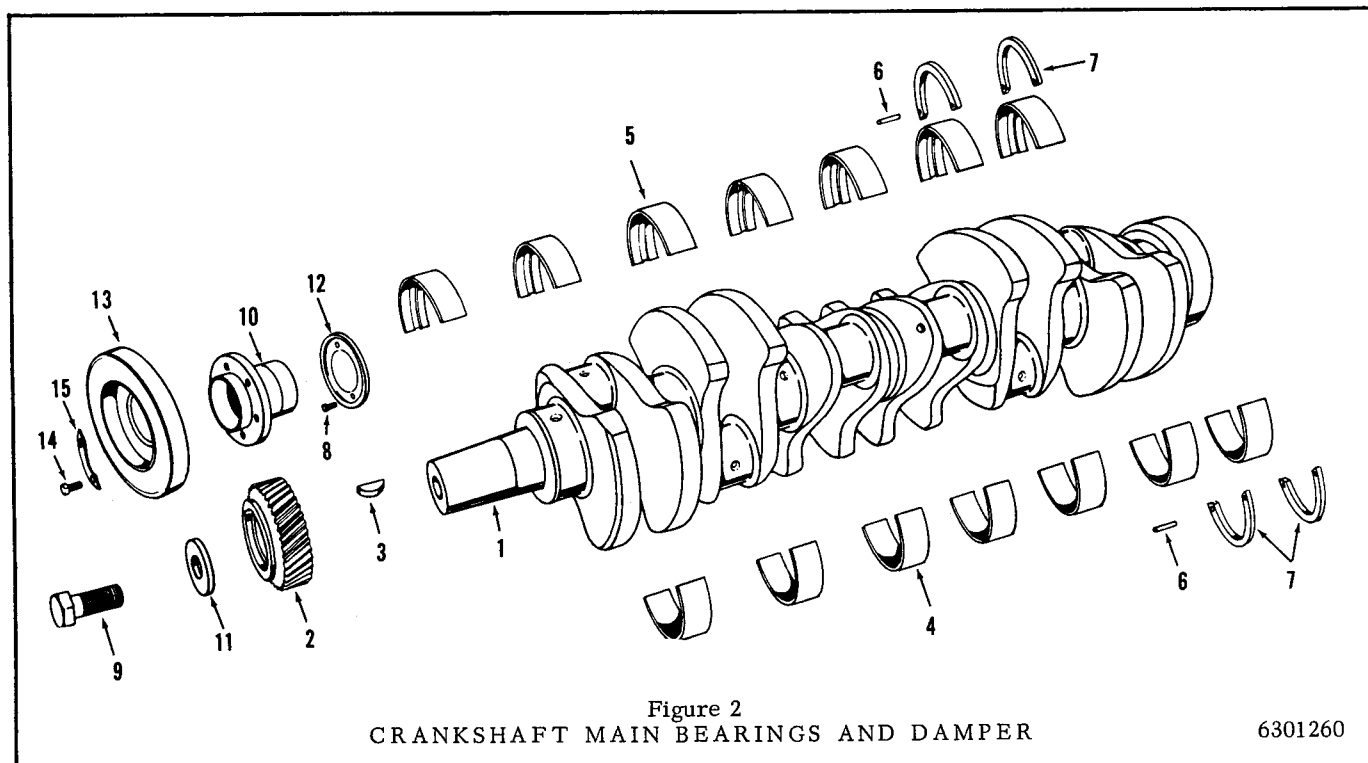


Figure 1  
CYLINDER BLOCK

Part Number	Part Name	No. Req.	Fig. No.	Ref. No.	Part Number	Part Name	No. Req.	Fig. No.	Ref. No.
BM-56563	Block, cylinder (150210)	1			100902	Cover, water header	1	1	24
100673	Bushing, camshaft	6	1	1	65473	Cover, water header end	1	1	25
122936	Capscrew, cylinder head (short)	7	1	2	103726	Connection, water inlet	1	1	26
					121687	Connection	1	1	27
122937	Capscrew, cylinder head (long)	7	1	3	107947	Cock, drain	1		
					103727	Connection, oil crossover	1	1	28
104293	Capscrew, main bearing	14	1	4	111955	Gasket, connection	1		
107947	Cock, drain	1	1	5	68615	Gasket, connection	1	1	30
68445	Dowel, block to head	2	1	6	65474	Gasket, cover	1	1	31
120830	Dowel, main bearing, cap	2	1	7	120324	Gasket	1		
68568	Dowel, pan to block	1	1	8	68619	Gasket, connection	1	1	33
70645	Dowel, pan to block	1	1	9	120930	Liner, cylinder	6	1	34
70653	Dowel, gear cover	1	1	10	S-604	Lockwasher	6	1	35
60408	Dowel, gear cover	1	1	11	S-605	Lockwasher	8	1	36
69236	Dowel, lubricating oil pump to block	2			68547	Packing, liner	12	1	37
					S-910-B	Plug, pipe	3		
60533	Lockplate	14	1	12	69901	Plug, pipe	3		
112076	Plug, pipe	1	1	13	S-908	Plug, pipe	6		
66351	Plug, pipe	1	1	14	140166	Plate, name	1		
69901	Plug, pipe	3	1	15	S-2267	Screw, nameplate	6		
S-911-B	Plug, pipe	9	1	16	S-602	Washer, plain	2		
S-910-B	Plug, pipe	2	1	17					
S-915-A	Plug, pipe	1	1	18	43872-A	Shim, liner (.007")		1	38
S-935-B	Plug, pipe	1	1	19	43872-B	Shim, liner (.008")		1	38
S-962	Plug, pipe	1			43872-C	Shim, liner (.009")	A/R	1	38
S-995	Plug, pipe	1	1	20	114522	Shim, liner (.020")		1	38
113995	Washer, cylinder head capscrews	14	1	21	114523	Shim, liner (.031")		1	38
					124455	Shim, liner (.062")		1	38
					124569	Shim, liner (.093")		1	38
S-109	Capscrew, water header cover	2	1	22					
S-103-D	Capscrew	2							
S-115	Capscrew	4							
S-106-A	Capscrew, oil transfer connection	4	1	23					
S-112	Capscrew	2							

PARTS INDENTED ARE INCLUDED IN THE PART UNDER WHICH THEY ARE INDENTED



Part Number	Part Name	No. Req.	Fig. No.	Ref. No.	Part Number	Part Name	No. Req.	Fig. No.	Ref. No.
BM-72703	Crankshaft assembly	1							
146450	Crankshaft	1	2	1					
43213-1	Gear, crankshaft	1	2	2					
S-331	Key	1	2	3					
S-911-B	Plug, pipe	6							
BM-27522	* Main bearing set	1							
44297	Bearing, main (lower)	7	2	4					
43214	Bearing, main (upper)	7	2	5					
124922	Pin, dowel	2	2	6					
150310	Ring, thrust	4	2	7					
S-118-A	Capscrew	2	2	8					
140410	Capscrew	1	2	9					
131309	Hub, vibration damper	1	2	10					
140411	Retainer, crankshaft	1	2	11					
70077	Slinger, oil	1	2	12					
*Main bearings may be ordered in standard .010", .020", .030", .040" undersize. When ordering always state size required.									
20835-1	Damper, vibration	1	2	13					
69793	Capscrew	6	2	14					
68909-1	Lockplate	3	2	15					

PARTS INDENTED ARE INCLUDED IN THE PART UNDER WHICH THEY ARE INDENTED



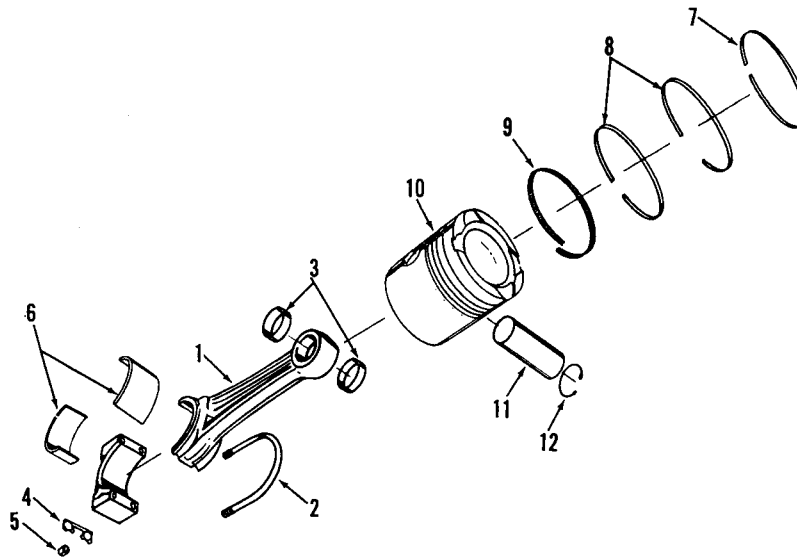


Figure 3  
CONNECTING ROD, PISTON and RINGS

Part Number	Part Name	No. Req.	Fig. No.	Ref. No.	Part Number	Part Name	No. Req.	Fig. No.	Ref. No.
BM-56854	Connecting rod (127725)	6	3	1	BM-59770	Piston assembly	6		
110275	Bolt, rod	12	3	2	130190	Piston	6	3	10
117270	Bushing, piston pin	12	3	3	123610	Pin, piston	6	3	11
60358	Lockplate	12	3	4	S-16256	Ring, snap	12	3	12
S-265	Nut, bolt	24	3	5	BM-59772	Piston assembly (.020" oversize)	6		
127730	Bearing, connecting rod	12	3	6	130192	Piston	6	3	10
BM-61770	Ring set, piston	1			123610	Pin, piston	6	3	11
109410	Ring, compression	6	3	7	S-16256	Ring, snap	12	3	12
68788	Ring, compression	12	3	8					
126480	Ring, oil	6	3	9	BM-59773	Piston assembly (.030" oversize)	6		
BM-61772	Ring set (.020" oversize)	1			130193	Piston	6	3	10
109412	Ring, compression	6	3	7	123610	Pin, piston	6	3	11
110982	Ring, compression	12	3	8	S-16256	Ring, snap	12	3	12
126482	Ring, oil	6	3	9					
BM-61773	Ring set (.030" oversize)	1			BM-59774	Piston assembly (.040" oversize)	6		
109413	Ring, compression	6	3	7	130194	Piston	6	3	10
110983	Ring, compression	12	3	8	123610	Pin, piston	6	3	11
126483	Ring, oil	6	3	9	S-16256	Ring, snap	12	3	12
BM-61774	Ring set (.040" oversize)	1							
109414	Ring, compression	6	3	7					
110984	Ring, compression	12	3	8					
126484	Ring, oil	6	3	9					

PARTS INDENTED ARE INCLUDED IN THE PART UNDER WHICH THEY ARE INDENTED

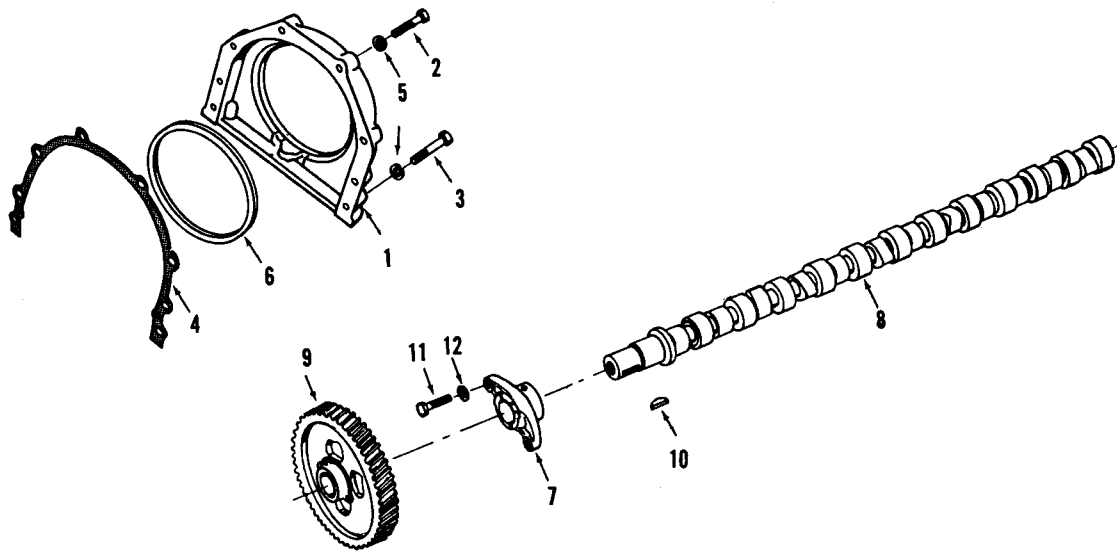


Figure 4  
REAR COVER and CAMSHAFT

6301269

Part Number	Part Name	No. Req.	Fig. No.	Ref. No.	Part Number	Part Name	No. Req.	Fig. No.	Ref. No.
106203	Cover, rear	1	4	1	BM-54813	Camshaft assembly	1		
S-106-A	Capscrew	2	4	2	121720	Bearing, camshaft	1	4	7
S-111	Capscrew	6	4	3	121580	Camshaft	1	4	8
102151	Gasket, cover	1	4	4	20836	Gear, camshaft	1	4	9
S-605	Lockwasher	8	4	5	S-302	Key	1	4	10
141745	Seal, oil	1	4	6					
					S-112	Capscrew, bearing	2	4	11
					S-604	Lockwasher	2	4	12

PARTS INDENTED ARE INCLUDED IN THE PART UNDER WHICH THEY ARE INDENTED

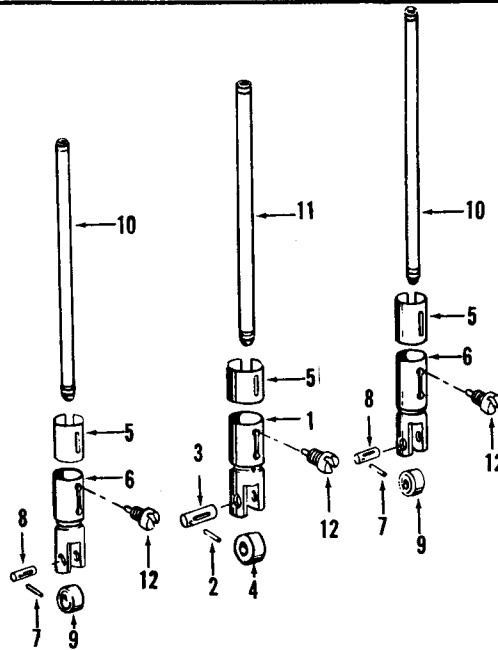


Figure 5  
PUSH RODS and TAPPETS

6201020

Part Number	Part Name	No. Req.	Fig. No.	Ref. No.	Part Number	Part Name	No. Req.	Fig. No.	Ref. No.
BM-40616	Tappet, injector (113745)	6	5	1					
108187	Lockwire	6	5	2					
113748	Pin, roller	6	5	3					
60521	Roller, tappet	6	5	4					
108156	Sleeve, guide	6	5	5					
BM-40615	Tappet, valve (113746)	12	5	6					
108186	Lockwire	12	5	7					
113749	Pin, roller	12	5	8					
69027	Roller, tappet	12	5	9					
108156	Sleeve, guide	12	5	5					
BM-46364	Rod, intake and exhaust push (112695)	12	5	10					
BM-46363	Rod, injector push (112699)	6	5	11					
126299	Guide, tappet	18	5	12					

PARTS INDENTED ARE INCLUDED IN THE PART UNDER WHICH THEY ARE INDENTED

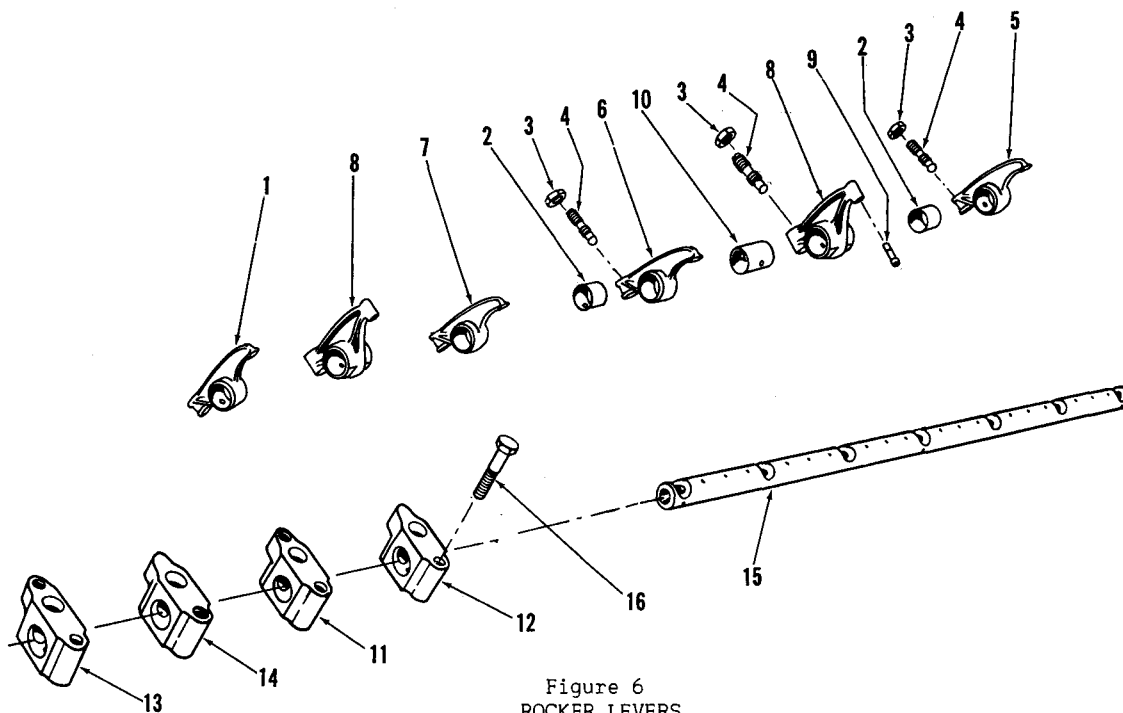


Figure 6  
ROCKER LEVERS

Part Number	Part Name	No. Req.	Fig. No.	Ref. No.	Part Number	Part Name	No. Req.	Fig. No.	Ref. No.
BM-96069	Lever, exhaust valve	3	6	1	BM-96078	Lever, injector (168826)	6	6	8
BM-96068	Lever and bushing (168829) Cyl. 1,3 and 5	3			BM-96077	Lever and bushing	6		
142190	Bushing, lever	3	6	2	152173	Socket, injector	6	6	9
S-212	Nut, adjusting screw	3	6	3	BM-96076	Lever and bushing			
168306	Screw, adjusting	3	6	4	142180	Bushing	6	6	10
BM-96073	Lever, exhaust valve	3	6	5	S-212	Nut, adjusting screw	6	6	3
BM-96072	Lever and bushing (168827) Cyl. 2,4 and 6	3			168306	Screw, adjusting	6	6	4
142190	Bushing, lever	3	6	2	114452	Bearing, shaft No. 3,5	2	6	11
S-212	Nut, adjusting screw	3	6	3	114450	Bearing, shaft No. 4	1	6	12
168306	Screw, adjusting	3	6	4	114451	Bearing, shaft No. 1,7	2	6	13
BM-96082	Lever, intake valve	3	6	6	114453	Bearing, shaft No. 2,6	2	6	14
BM-96081	Lever and bushing (168830) Cyl. 2,4 and 6	3			142201	Shaft, rocker lever	1	6	15
142190	Bushing, lever	3	6	2	113987	Plug, expansion	2		
S-212	Nut, adjusting screw	3	6	3	S-150	Capscrew, bearing to cylinder head	7	6	16
168306	Screw, adjusting	3	6	4					
BM-96080	Lever, intake valve	3	6	7					
BM-96079	Lever and bushing (168828) Cyl. 1,3 and 5	3							
142190	Bushing, lever	3	6	2					
S-212	Nut, adjusting screw	3	6	3					
168306	Screw, adjusting	3	6	4					

PARTS INDENTED ARE INCLUDED IN THE PART UNDER WHICH THEY ARE INDENTED

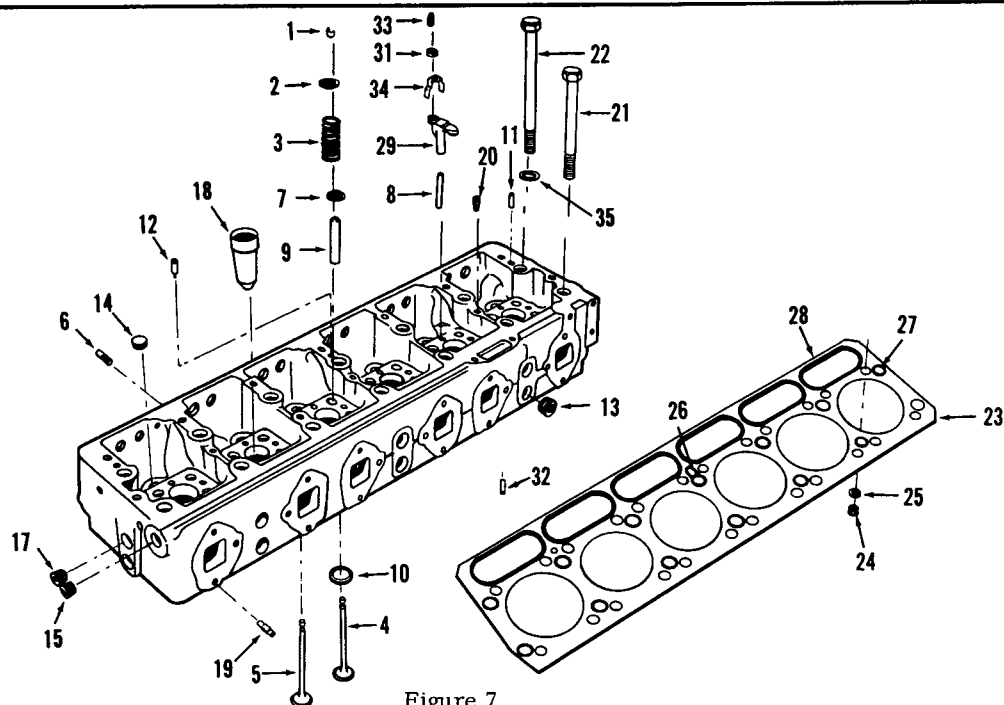


Figure 7  
CYLINDER HEAD

Part Number	Part Name	No. Req.	Fig. No.	Ref. No.	Part Number	Part Name	No. Req.	Fig. No.	Ref. No.
BM-74454	Head, cylinder (143551)	1			68445	Pin, dowel	2	7	32
119819	Half-collet, valve	48	7	1	147389	Screw, crosshead	12	7	33
119806	Retainer, valve spring	24	7	2	112729	Retainer, valve crosshead	12	7	34
120089	Spring, valve	24	7	3	113995	Washer, cylinder head	14	7	35
148738	Valve, exhaust	12	7	4					
44748	Valve, intake	12	7	5					
BM-74452	Head, cylinder, less valves	1							
146891	Dowel, manifold threaded	3	7	6					
105292	Guide, valve spring	24	7	7					
143526	Guide, crosshead valves	12	7	8					
105293	Guide, valve	24	7	9					
70843	Insert, valve seat	24	7	10					
60488	Pin, dowel	2	7	11					
69233	Pin, dowel	1	7	12					
S-995	Plug, pipe	12	7	13					
S-915-A	Plug, pipe	6	7	14					
70459	Plug, fuse	1	7	15					
67622	Plug, pipe	1	7	17					
108019	Sleeve, injector	6	7	18					
103847	Stud, exhaust manifold	6	7	19					
63876-1	Ventilator	3	7	20					
122936	Capscrew (short)	7	7	21					
122937	Capscrew (long)	7	7	22					
BM-51649	Gasket, cylinder head (143878)	1	7	23					
131168	Ferrule, gasket	24	7	24					
132705	Grommet, gasket	24	7	25					
114326	Grommet	1	7	26					
115984	Grommet	13	7	27					
115985	Ring, push tube	6	7	28					
116137	Crosshead valve	6	7	29					
116138	Crosshead valve	6							
S-273	Nut	12	7	31					

PARTS INDENTED ARE INCLUDED IN THE PART UNDER WHICH THEY ARE INDENTED

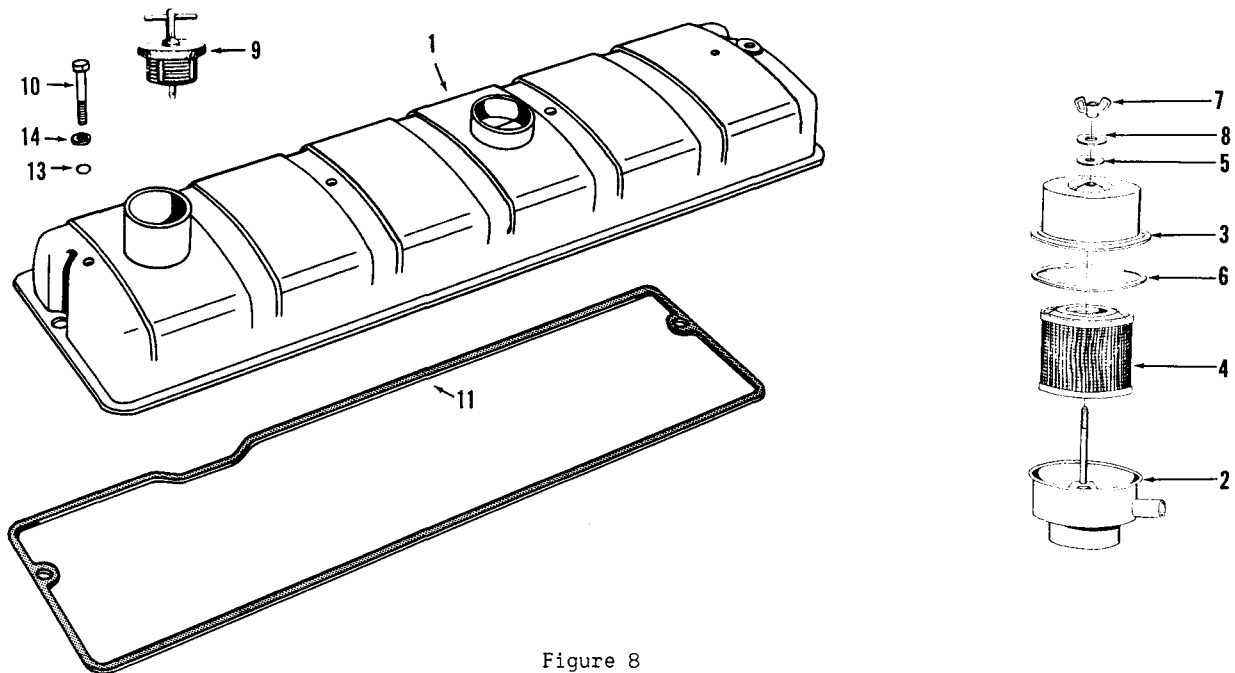


Figure 8  
CYLINDER HEAD COVER and BREATHER

Part Number	Part Name	No. Req.	Fig. No.	Ref. No.	Part Number	Part Name	No. Req.	Fig. No.	Ref. No.
132379	Cover, cylinder head	1	8	1		BREATHER VENT TUBE			
154272	Breather, crankcase	1			43828	Clamp, hose	2		
155998	Body	1	8	2	68425	Clip, hose	1		
155997	Cover	1	8	3	S-109	Capscrew	1		
123716	Element	1	8	4	64775	Hose	1		
125015	Gasket, wing nut	1	8	5	S-604	Lockwasher	1		
125019	Gasket, cover	1	8	6	S-223	Nut	1		
125017	Nut, wing	1	8	7	68038	Support, tube	1		
125016	Washer	1	8	8	140921	Tube, breather vent	1		
107981	Cap, filler tube	1	8	9					
S-104	Capscrew	4	8	10					
128478	Gasket, cover	1	8	11					
BM-50750	Seal, capscrew	1							
70415	"O" ring	4	8	13					
115231	Washer, cupped	4	8	14					

PARTS INDENTED ARE INCLUDED IN THE PART UNDER WHICH THEY ARE INDENTED

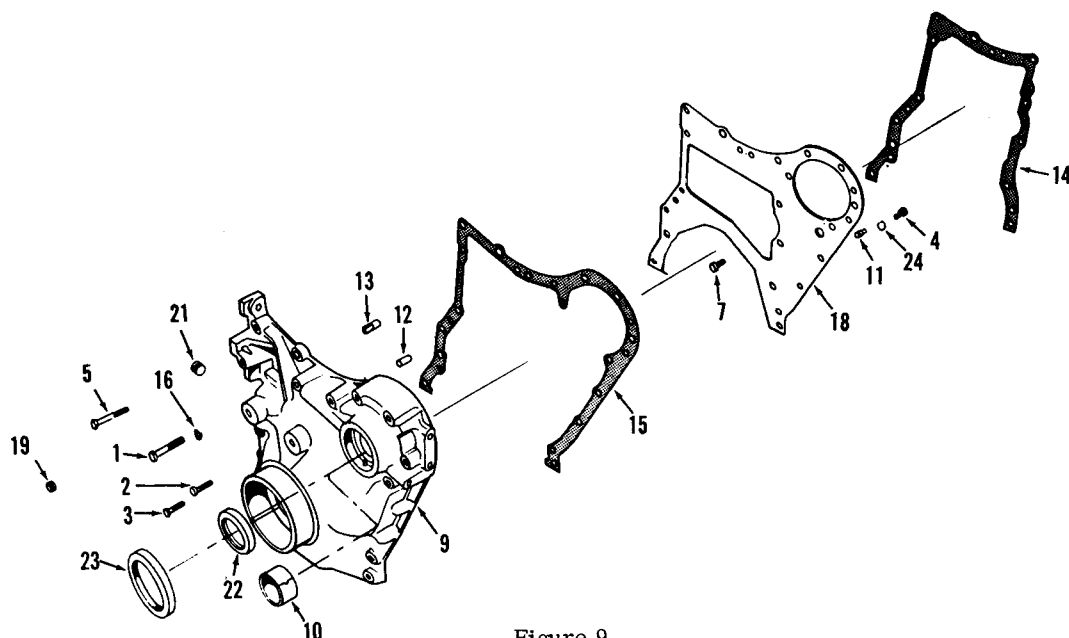


Figure 9  
GEAR COVER

6302084

Part Number	Part Name	No. Req.	Fig. No.	Ref. No.	Part Number	Part Name	No. Req.	Fig. No.	Ref. No.
S-104	Capscrew, cover to block	1	9	1					
S-120	Capscrew, cover to block	2	9	2					
S-103-D	Capscrew, cover to block	4	9	3					
S-117	Capscrew, plate to cover	2	9	4					
S-141	Capscrew, cover to block	6	9	5					
S-163	Capscrew, plate to block	1							
S-109	Capscrew, plate to block	3	9	7					
S-119	Capscrew	1							
BM-79814	Cover, gear (161194)	1	9	9					
139810	Bushing	1	9	10					
68226	Bushing, trunnion	1							
67857	Dowel	1	9	11					
60408	Dowel (Master)	1	9	12					
70653	Dowel (Diamond)	1	9	13					
150306	Gasket, plate to block	1	9	14					
150299	Gasket, cover to plate	1	9	15					
S-604	Lockwasher	19	9	16					
S-605	Lockwasher	1							
150297	Plate, gear	1	9	18					
S-910-B	Plug, pipe	1	9	19					
67622	Plug, pipe	1							
S-915-	Plug, pipe	1	9	21					
140896	Seal, oil	1	9	22					
141743	Seal, crankshaft oil	1	9	23					
S-602	Washer, plain	3	9	24					

PARTS INDENTED ARE INCLUDED IN THE PART UNDER WHICH THEY ARE INDENTED

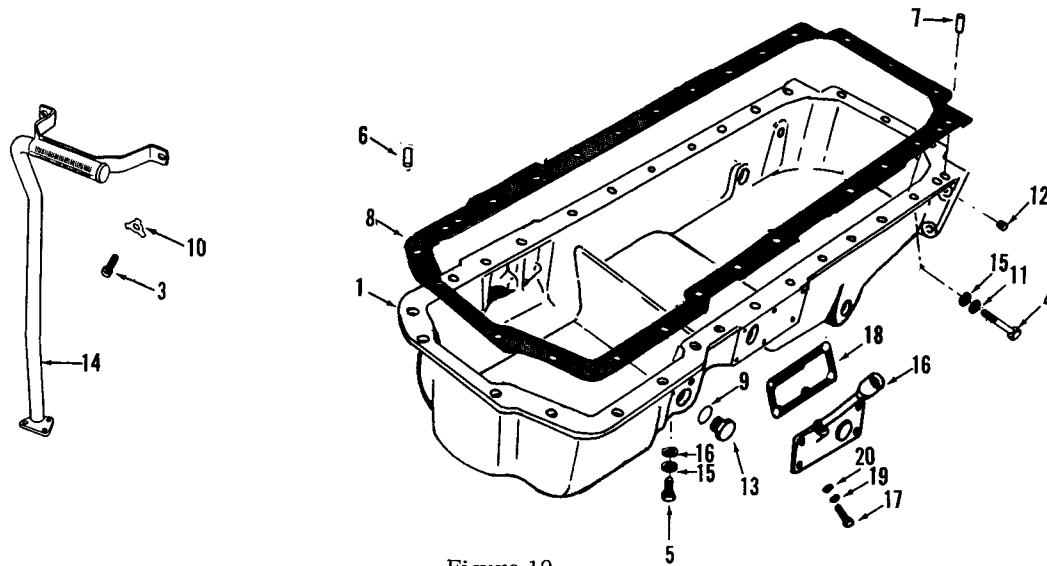


Figure 10  
OIL PAN

Part Number	Part Name	No. Req.	Fig. No.	Ref. No.	Part Number	Part Name	No. Req.	Fig. No.	Ref. No.
108137	Pan, oil	1	10	1		Dipstick and Tube			
S-115	Capscrew, suction flange	3			101240	Bracket, oil gauge	1	10	16
S-107	Capscrew, suction tube to block	2	10	3	101352	Dipstick	1		
					101936	Tube, dipstick	1		
S-126	Capscrew	2							
S-134	Capscrew	1			S-102	Capscrew	6	10	17
S-107-A	Capscrew, drain tube	2			109459	Gasket	1	10	18
S-104	Capscrew	1			S-605	Lockwasher	6	10	19
S-199-A	Capscrew, strap	2			S-626	Washer, plain	6	10	20
101662	Capscrew	8							
S-169-A	Capscrew, pan to block	2	10	4					
S-103-D	Capscrew, pan to block	20	10	5					
S-102	Capscrew	1							
70645	Dowel, pan to block	1	10	6					
68568	Dowel, pan to block	1	10	7					
108729	Gasket, suction flange	1							
20842	Gasket, oil pan	1	10	8					
67946	Gasket, valve	2	10	9					
68908-A	Lockplate	7							
117559	Lockplate	2	10	10					
S-604	Lockwasher	27	10	11					
60358	Plate	1							
S-915-A	Plug, pipe	4	10	12					
110907	Plug, drain	2	10	13					
43226-2	Screen	1							
69171-1	Support	1							
BM-90062	Tube, suction	1	10	14					
BM-57730	Tube, drain	1							
S-602	Washer, pan to block	27	10	15					
BM-35338	Body, suction tube	1							

PARTS INDENTED ARE INCLUDED IN THE PART UNDER WHICH THEY ARE INDENTED



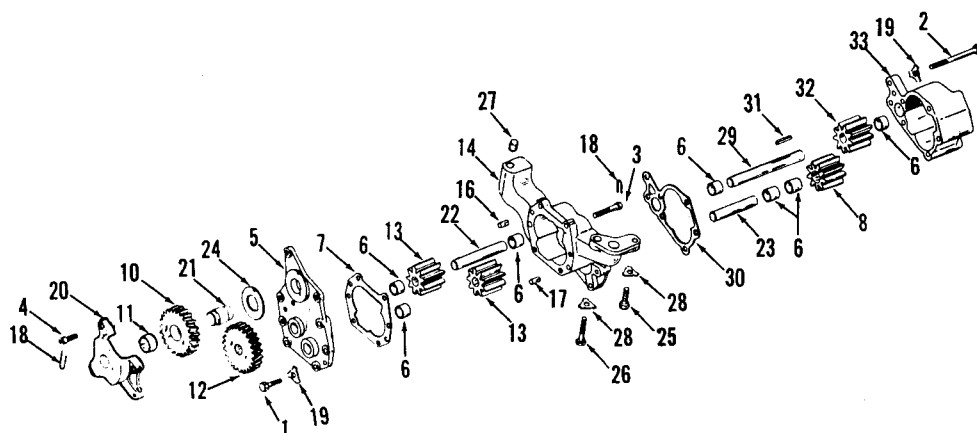


Figure 11  
LUBRICATING OIL PUMP

6305356

Part Number	Part Name	No. Req.	Fig. No.	Ref. No.	Part Number	Part Name	No. Req.	Fig. No.	Ref. No.
BM-35348	Pump, oil	1			S-112	Capscrew	1	11	25
S-115	Capscrew, cover to housing	3	11	1	S-103-D	Capscrew	2	11	26
S-138-C	Capscrew	1	11	2	69236	Dowel, pump to block	2	11	27
S-185-A	Capscrew	1			68908	Lockplate	3	11	28
172513	Capscrew	1	11	3					
172514	Capscrew	4	11	4					
BM-35344	Cover and bushing (108198)	1	11	5					
68586	Bushing, drive shaft	2	11	6					
108224	Gasket, cover to housing	1	11	7					
108728	Gasket	1	11	30					
BM-20443	Gear and bushing (68589)	1	11	8					
68586	Bushing, driven gear	2	11	9					
BM-20442	Gear and bushing (43238-1)	1	11	10					
69510	Bushing, idler gear	1	11	11					
43240	Gear, drive	1	11	12					
68588	Gear, driven	2	11	13					
108108	Gear, scavenger drive	1	11	32					
BM-35345	Housing and bushing (108167)	1	11	14					
68586	Bushing, drive shaft	2	11	15					
BM-35346	Housing, scavenger(108717)	1	11	33					
68586	Bushing	1							
68585	Dowel, cover to housing	1	11	16					
111544	Dowel	1							
68595	Dowel, cover to housing	1	11	17					
108109	Key	1	11	31					
67089	Lockwire	5	11	18					
68908-A	Lockplate, cover to body	4	11	19					
100571	Retainer, idler gear	1	11	20					
69509	Shaft, idler gear	1	11	21					
68590	Shaft, drive	1	11	22					
68603	Shaft	1	11	23					
108146	Shaft, scavenger drive	1	11	29					
69508	Washer, thrust	1	11	24					

PARTS INDENTED ARE INCLUDED IN THE PART UNDER WHICH THEY ARE INDENTED

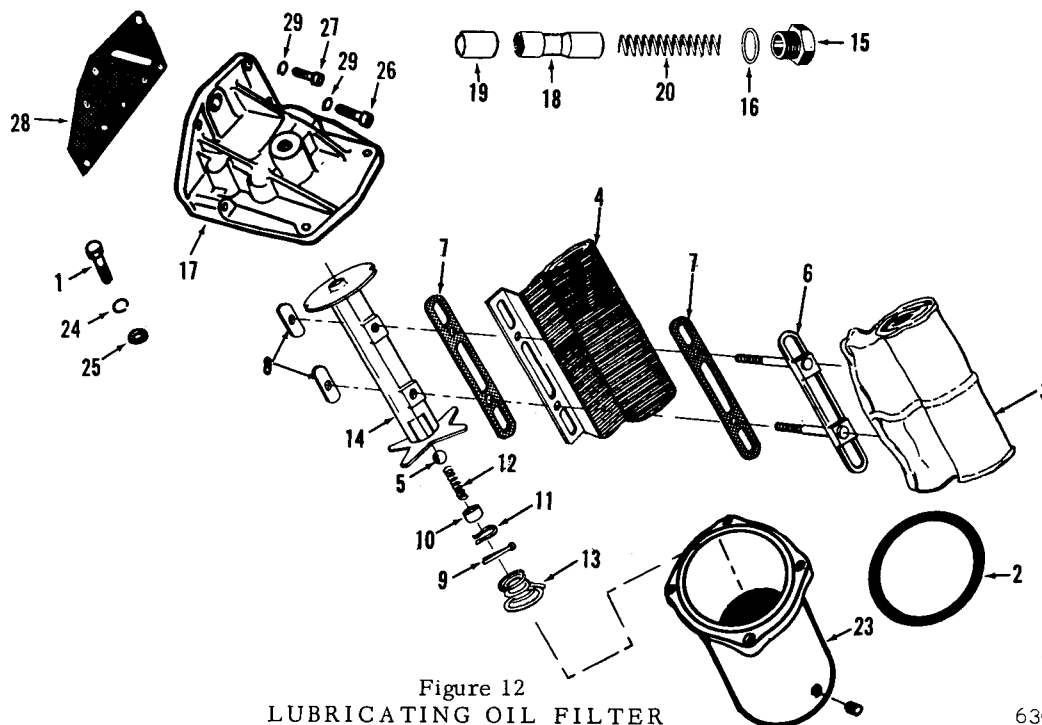


Figure 12  
LUBRICATING OIL FILTER

6302077

Part Number	Part Name	No. Req.	Fig. No.	Ref. No.	Part Number	Part Name	No. Req.	Fig. No.	Ref. No.
BM-62798	Filter assembly, oil	1			112795	Gasket, head to block	1	12	28
S-137	Capscrew, head to shell	4	12	1	S-604	Lockwasher	4	12	29
114479	Decal	1							
69751	Gasket, cover to shell	1	12	2					
104926	Filter assembly	1							
S-1915-1	Element, assembly	1							
S-1953	Bag, filter	1	12	3					
134729	Seperator	1	12	4					
128798	Spool assembly	1							
128805	Ball, by-pass relief	1	12	5					
128800	Clamp, bag	1	12	6					
128801	Gasket, clamp	2	12	7					
128802	Nut, clamp	2	12	8					
S-503	Pin, cotter	1	12	9					
128803	Retainer, spring	1	12	10					
128807	Ring, retaining	1	12	11					
128804	Spring, by-pass adjusting	1	12	12					
128806	Spring, shock	1	12	13					
128799	Spool	1	12	14					
BM-45611	Head assembly, filter	1							
69354	Cap, spring retaining	1	12	15					
S-3050	Gasket, cap	1	12	16					
148659	Head, filter	1	12	17					
BM-78225	Plunger, relief valve	1							
148216	Plunger, high pressure	1	12	18					
148217	Plunger, oil pressure	1	12	19					
69355	Spring, relief valve	1	12	20					
S-911-B	Plug, pipe	1	12						
69901	Plug, drain	1	12	22					
250722	Shell assembly	1	12	23					
S-610	Lockwasher	4	12	24					
S-622	Washer, plain	4	12	25					
S-112	Capscrew	3	12	26					
S-141	Capscrew	1	12	27					

PARTS INDENTED ARE INCLUDED IN THE PART UNDER WHICH THEY ARE INDENTED

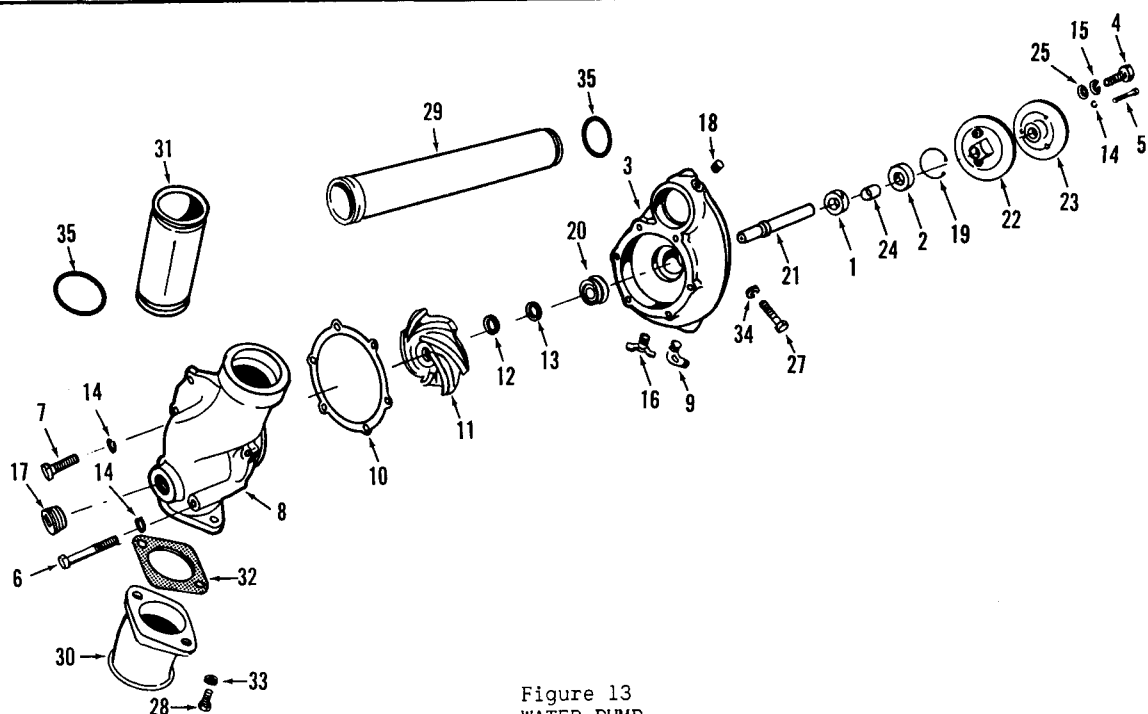


Figure 13  
WATER PUMP

Part Number	Part Name	No. Req.	Fig. No.	Ref. No.	Part Number	Part Name	No. Req.	Fig. No.	Ref. No.
BM-77463	Pump, water	1			101427	Belt, "V"	1		
69289	Bearing, ball	1	13	1	103009	Capscrew	3	13	27
70171	Bearing, ball	1	13	2	S-112	Capscrew	2	13	28
154180	Body, pump	1	13	3	111752	Connection	1	13	29
S-155	Capscrew, sheave	1	13	4	69910	Connection, inlet	1	13	30
S-119	Capscrew	3	13	5	70627	Coupling, by-pass	1	13	31
S-185-A	Capscrew	2	13	6	69909	Gasket, connection	1	13	32
S-115	Capscrew	4	13	7	S-604	Lockwasher	2	13	33
101222	Cover, pump	1	13	8	S-610	Lockwasher	3	13	34
S-1004-1	Elbow	1	13	9	70624	"O" ring	4	13	35
44818	Gasket	1	13	10					
BM-71655	Impeller (122294)	1	13	11					
143913	Film, bonding	1	13	12					
135079	Seat, impeller	1	13	13					
S-605	Lockwasher	9	13	14					
S-610	Lockwasher	1	13	15					
S-962-E	Petcock	1	13	16					
S-995	Plug, pipe	1	13	17					
S-911-B	Plug, pipe	1	13	18					
132427	Ring, retaining	1	13	19					
144306	Seal, pump	1	13	20					
44796	Shaft	1	13	21					
120400	Sheave, adjusting	1	13	22					
116741	Sheave, fixed	1	13	23					
105287	Spacer	1	13	24					
70880	Washer, plain	1	13	25					

PARTS INDENTED ARE INCLUDED IN THE PART UNDER WHICH THEY ARE INDENTED

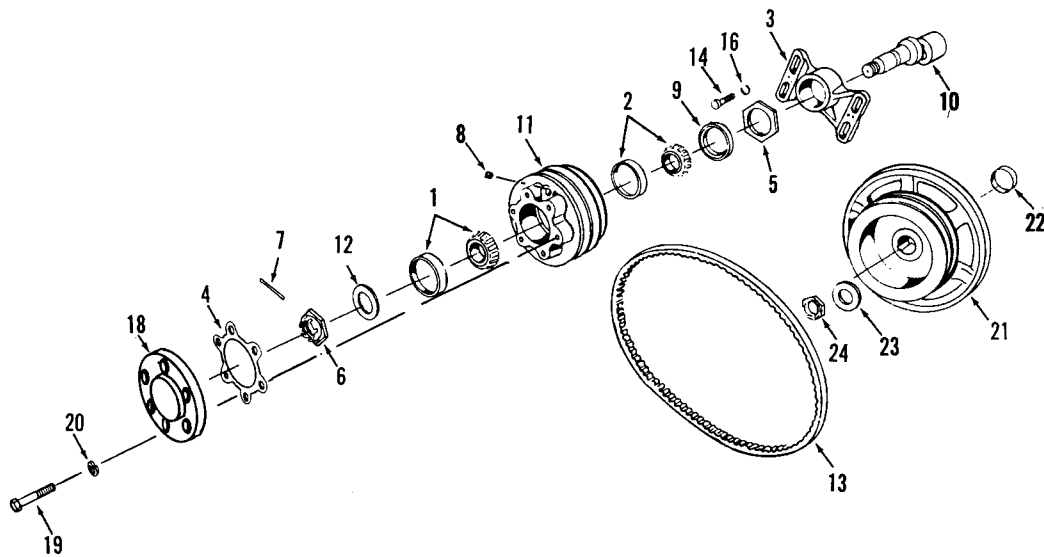


Figure 14  
FAN HUB

Part Number	Part Name	No. Req.	Fig. No.	Ref. No.	Part Number	Part Name	No. Req.	Fig. No.	Ref. No.
BM-77521	Hub, fan	1							
143116	Bearing	1	14	1					
116759	Bearing	1	14	2					
143077	Bracket, fan	1	14	3					
143108	Gasket	1	14	4					
143089	Nut	1	14	5					
146650	Nut	1	14	6					
S-510	Pin	1	14	7					
S-911-B	Plug, pipe	2	14	8					
106276	Seal, oil	1	14	9					
141762	Shaft, fan hub	1	14	10					
142981	Pulley, fan	1	14	11					
146651	Washer, clamp	1	14	12					
124466	Belt	2	14	13					
S-155	Capscrew	4	14	14					
S-610	Lockwasher	4	14	16					
147209	Spacer	1	14	18					
S-120	Capscrew, spacer	4	14	19					
S-604	Lockwasher	4	14	20					
	FAN DRIVE PULLEY								
BM-51278	Pulley and sleeve (120313)	1	14	21					
70755	Sleeve	1	14	22					
S-690	Washer, plain	1	14	23					
105297	Locknut	1	14	24					

PARTS INDENTED ARE INCLUDED IN THE PART UNDER WHICH THEY ARE INDENTED

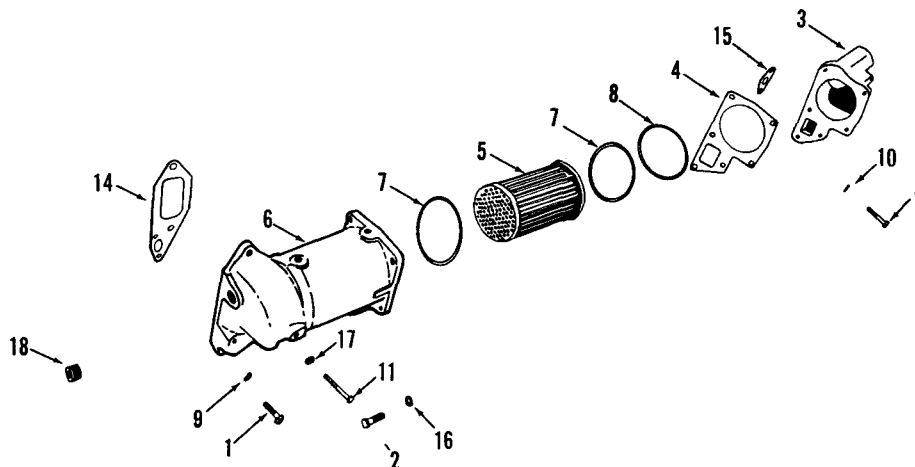


Figure 15  
LUBRICATING OIL COOLER

6306135

Part Number	Part Name	No. Req.	Fig. No.	Ref. No.	Part Number	Part Name	No. Req.	Fig. No.	Ref. No.
BM-48784	Cooler assembly, lubricating oil	1	15						
S-103-D	Capscrew, cover to housing	4	15	1					
S-119	Capscrew, cover to housing	2	15	2					
111749	Cover, lubricating oil cooler	1	15	3					
111956	Gasket, front cover to housing	1	15	4					
BM-54620	Housing and retainer assembly	1	15						
110848	Element	1	15	5					
111865	Housing	1	15	6					
148293	"O" ring	2	15	7					
110827	Retainer, cooler and "O" ring	1	15	8					
S-604	Lockwasher, cover to housing	4	15	9					
S-605	Lockwasher, cover to housing	2	15	10					
S-103-D	Capscrew, cooler to block	1	15	11					
S-103	Capscrew, cooler to block	1							
S-119	Capscrew, cooler to block	3							
68615	Gasket, cooler to block (rear)	1	15	14					
111955	Gasket, cooler to block (front)	1	15	15					
S-605	Lockwasher, housing to block	4	15	16					
S-604	Lockwasher, housing to block	1	15	17					
S-915-A	Plug, pipe	1	15	18					

PARTS INDENTED ARE INCLUDED IN THE PART UNDER WHICH THEY ARE INDENTED

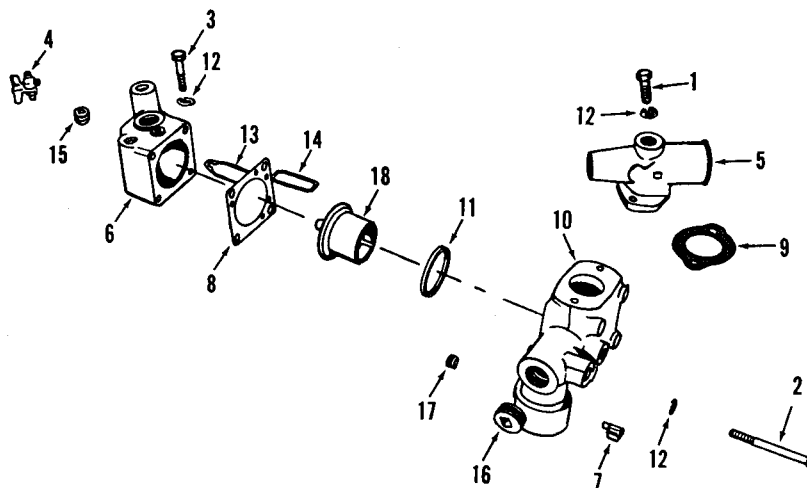


Figure 16  
THERMOSTAT HOUSING and CONNECTION

6302080

Part Number	Part Name	No. Req.	Fig. No.	Ref. No.	Part Number	Part Name	No. Req.	Fig. No.	Ref. No.
108707	Capscrew	2	16	1					
S-105	Capscrew	4	16	2					
S-112	Capscrew	2	16	3					
S-962-E	Cock, drain	1	16	4					
42354-B	Connection, water outlet	1	16	5					
116673	Connection, cylinder head water outlet	1	16	6					
116684	Elbow, restrictive	1	16	7					
116681	Gasket, thermostat housing	1	16	8					
9221	Gasket, connection	1	16	9					
BM-73365	Housing, thermostat (145459)	1	16	10					
135600	Seal	1	16	11					
S-604	Lockwasher	8	16	12					
BM-49918	Plate and insert	1							
118374	Plate, connection to head	1	16	13					
118375	Insert, connection to head	1	16	14					
S-915-A	Plug, pipe	4	16	15					
S-962	Plug, pipe	2	16	16					
S-910-B	Plug, pipe	2	16	17					
135675	Thermostat (170° to 185°)	1	16	18					
116683	Tube assembly	1							

PARTS INDENTED ARE INCLUDED IN THE PART UNDER WHICH THEY ARE INDENTED

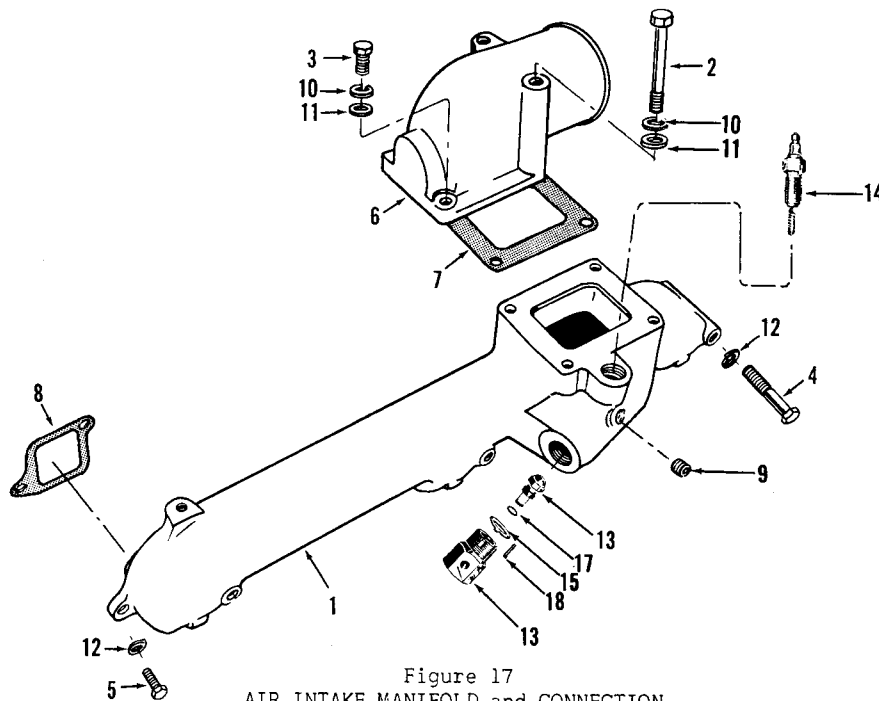


Figure 17  
AIR INTAKE MANIFOLD and CONNECTION

Part Number	Part Name	No. Req.	Fig. No.	Ref. No.	Part Number	Part Name	No. Req.	Fig. No.	Ref. No.
145779	Manifold, air intake	1	17	1		GLOWPLUG			
S-149-A	Capscrew (long)	2	17	2	125880	Adapter	1	17	13
108707	Capscrew (short)	2	17	3	67946	Gasket	1		
S-199-B	Capscrew, manifold	3	17	4	68812	Glowplug	1	17	14
S-103-D	Capscrew, manifold	3	17	5	68178	Lockplate	1	17	15
107202	Connection, air intake	1	17	6	69215	Nozzle	1	17	16
102131	Gasket, connection	1	17	7	68061-A	"O" ring	1	17	17
70851	Gasket, manifold	3	17	8	43468	Pin	1	17	18
S-911-B	Plug, pipe (1/8" hex-head)	2	17	9					
S-604	Lockwasher	4	17	10					
S-602	Washer, plain	4	17	11					
S-679	Washer, copper	6	17	12					

PARTS INDENTED ARE INCLUDED IN THE PART UNDER WHICH THEY ARE INDENTED

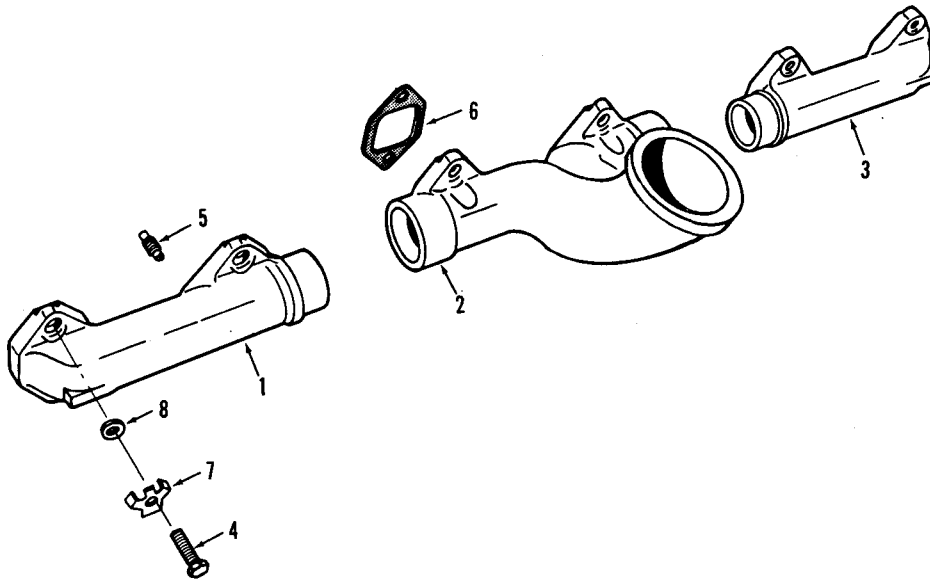


Figure 18  
EXHAUST MANIFOLD

Part Number	Part Name	No. Req.	Fig. No.	Ref. No.	Part Number	Part Name	No. Req.	Fig. No.	Ref. No.
150498	Manifold, exhaust	1	18	1					
146528	Manifold, exhaust	1	18	2					
150497	Manifold, exhaust	1	18	3					
S-103-D	Capscrew	12	18	4					
146891	Dowel, manifold	3	18	5					
147339	Gasket, manifold	6	18	6					
109003	Lockplate	12	18	7					
108976	Washer	12	18	8					

PARTS INDENTED ARE INCLUDED IN THE PART UNDER WHICH THEY ARE INDENTED



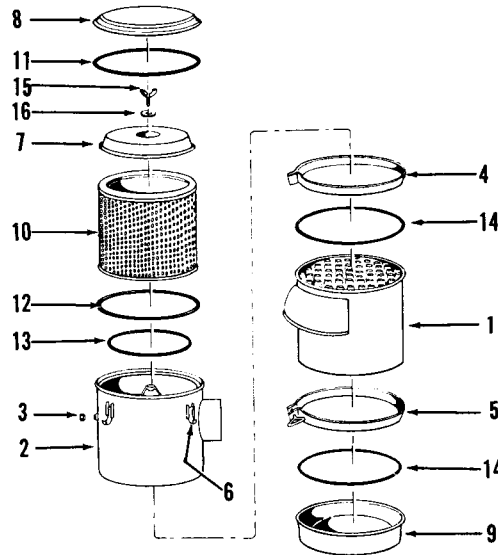


Figure 19  
AIR CLEANER

Part Number	Part Name	No. Req.	Fig. No.	Ref. No.	Part Number	Part Name	No. Req.	Fig. No.	Ref. No.
151606	Air cleaner	1							
151798	Body, lower	1	19	1					
150781	Body, upper	1	19	2					
150768	Cap, restriction	1	19	3					
133743	Clamp, body	1	19	4					
133743	Clamp, cup	1	19	5					
150767	Clip, cover	1	19	6					
150779	Cover, inner	1	19	7					
133737	Cover, assembly	1	19	8					
133745	Cup, assembly	1	19	9					
150778	Element	1	19	10					
150775	Gasket, cover	1	19	11					
150780	Gasket, inner cover	1	19	12					
150782	Gasket, element	1	19	13					
133742	Gasket, body and cup	2	19	14					
152792	Screw	1	19	15					
152793	Washer	1	19	16					
106220	Strap	2							
103806	Hose	2							
125739	Clamp, "T" bolt	4							

PARTS INDENTED ARE INCLUDED IN THE PART UNDER WHICH THEY ARE INDENTED

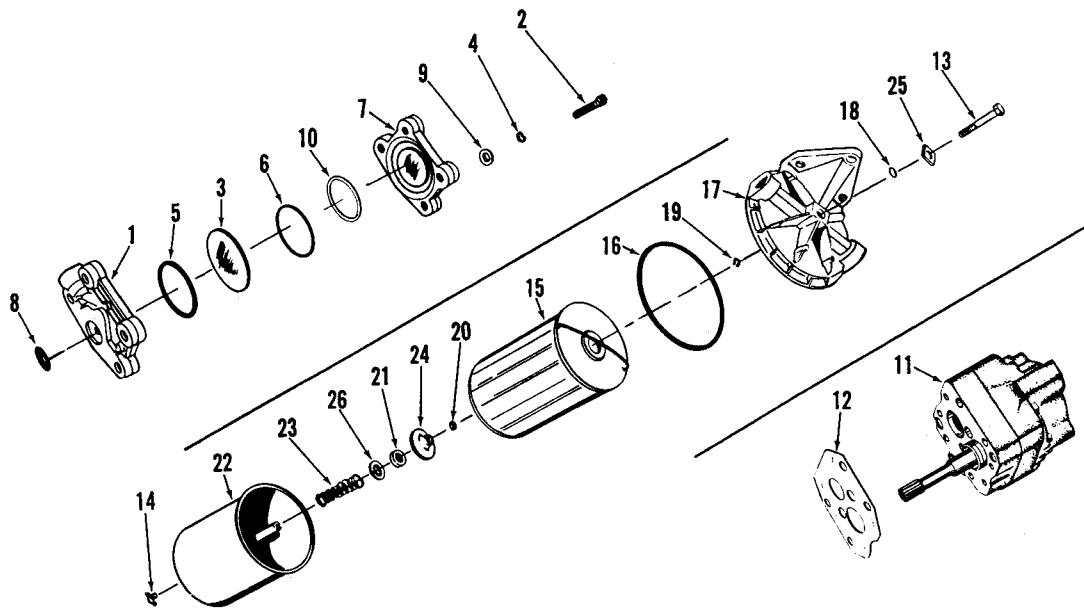


Figure 20  
FUEL PUMP DAMPER, GEAR PUMP and FILTER

Part Number	Part Name	No. Req.	Fig. No.	Ref. No.	Part Number	Part Name	No. Req.	Fig. No.	Ref. No.
PT FUEL SYSTEM					FUEL FILTER				
Each Cummins PT Fuel Pump is calibrated to obtain the best performance and fuel economy for your engine. Your Cummins Distributor or Dealer has the special tools required for complete rebuild and calibration. Caution: do not disturb the fuel pressure settings or the throttle screw settings, as serious damage to your engine may result.					151940	Filter, fuel	1		
Only PT Fuel System parts which can be replaced without pump calibration are listed here. Your Cummins Distributor will record the specific part number of your complete PT Fuel Pump in the front of this book.					121960	Capscrew, head to shell	1	20	13
					S-962-E	Cock, drain	1	20	14
					141986	Decal, filter	1		
					139097	Element (FF-108)	1	20	15
					151881	Gasket, head to shell	1	20	16
					251128	Head, filter	1	20	17
					134736	"O" ring, capscrew	1	20	18
					135169	Ring, grip, capscrew	1	20	19
					251131	Ring, grip, post	1	20	20
					151884	Seal, pilot	1	20	21
					251091	Shell and post	1	20	22
					151885	Spring, filter	1	20	23
					151920	Support, filter element	1	20	24
					251081	Washer, capscrew	1	20	25
					S-658	Washer, plain	1	20	26
					129866	Connection, straight	1		
					129859	Connection, elbow	1		
					129858	"O" ring	1		
FUEL PUMP DAMPER									
BM-76340	Damper, fuel pump	1							
153336	Body, damper	1	20	1					
171545	Capscrew	4	20	2					
139834	Diaphragm	1	20	3					
S-698	Lockwasher	4	20	4					
139988	"O" ring	1	20	5					
100099	"O" ring	1	20	6					
153338	Plate, damper	1	20	7					
151900	Seal	1	20	8					
70704	Washer	4	20	9					
160514	Washer, nylon	1	20	10					
GEAR PUMP									
BM-90270	Gear pump 3/4" (R.H.)	1	20	11					
139290	Gasket, pump	1	20	12					

PARTS INDENTED ARE INCLUDED IN THE PART UNDER WHICH THEY ARE INDENTED

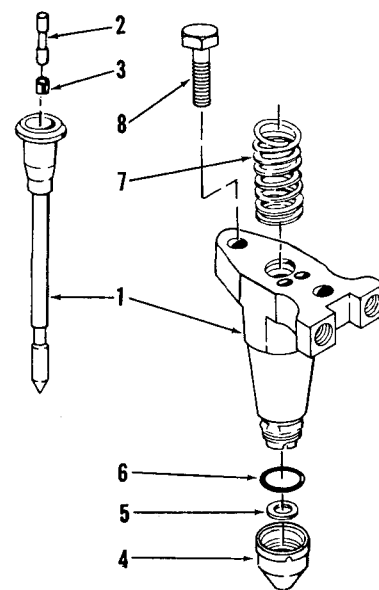
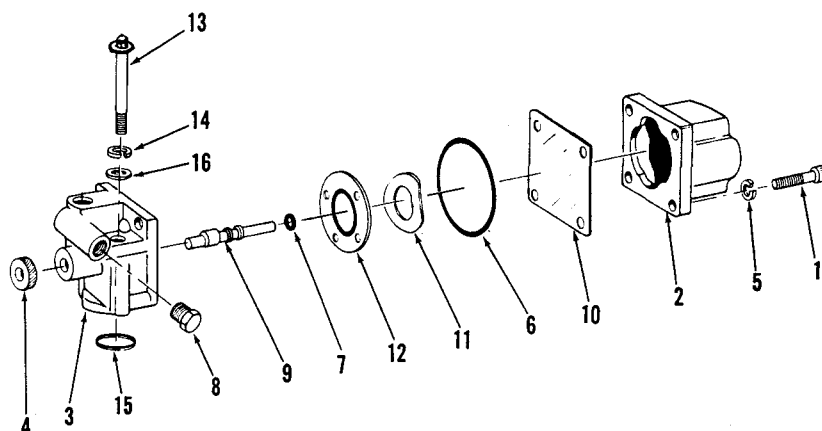


Figure 21  
FUEL SHUTDOWN VALVE and INJECTOR

Part Number	Part Name	No. Req.	Fig. No.	Ref. No.	Part Number	Part Name	No. Req.	Fig. No.	Ref. No.
SHUTDOWN VALVE					INLET and DRAIN CONNECTIONS				
BM-79973	Valve, shutdown (12 volt)	1							
S-1214	Capscrew, coil to housing	4	21	1	BM-31308	Connection, inlet	6		
134072	Coil assembly	1	21	2	BM-31309	Connection, drain	6		
129826	Housing, valve	1	21	3	9426-2	Gasket, copper	12		
129838	Knob, override	1	21	4	70854	Gasket, rubber	12		
S-607	Lockwasher	4	21	5	70847	Retainer	12		
129888	"O" ring, coil to housing	1	21	6	70856	Spring	12		
114791	"O" ring, shaft	1	21	7					
70295	Plug, pipe	1	21	8	INJECTOR				
143679	Shaft, override	1	21	9					
129839	Shield, fuel	1	21	10	BM-78073	Injector assembly	6		
129768	Spring	1	21	11	BM-71819	Body and plunger (131590)	6	21	1
129827	Valve	1	21	12	146814	Link	6	21	2
171546	Capscrew	2	21	13	148504	Sleeve	6	21	3
S-698	Lockwasher	2	21	14	BM-32321	Cup and gasket assembly (172866)	6	21	4
154087	"O" ring	1	21	15		Gasket, cup	6	21	5
67684	Washer, plain	2	21	16	62410	"O" ring, cup to injector	6	21	6
					70755	Spring	6	21	7
					9337	Capscrew	12	21	8
					S-165				
FUEL TUBING									
117179	Manifold, drain	1							
BM-62740	Manifold, supply	1							
144727	Tube, shut-off valve to supply manifold	1							
163646	Clip	2							
70817	Connection, straight	1							

PARTS INDENTED ARE INCLUDED IN THE PART UNDER WHICH THEY ARE INDENTED

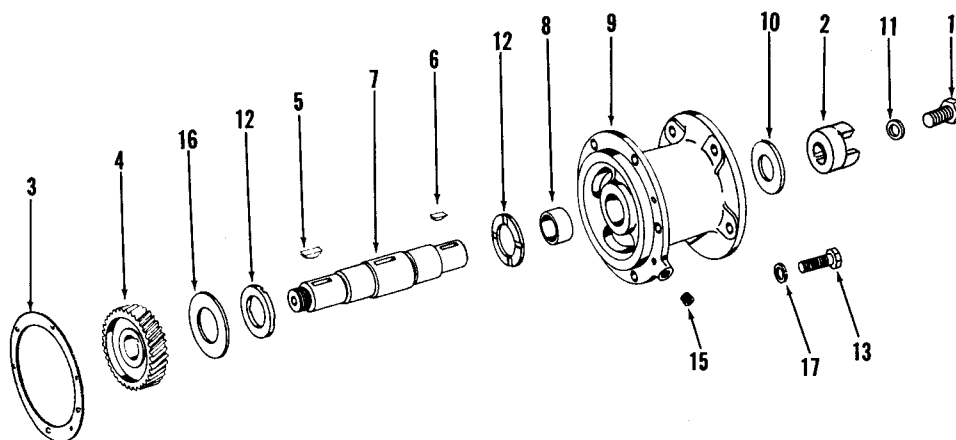


Figure 22  
FUEL PUMP DRIVE

Part Number	Part Name	No. Req.	Fig. No.	Ref. No.	Part Number	Part Name	No. Req.	Fig. No.	Ref. No.
BM-94789	Drive, fuel pump	1							
129510	Capscrew	1	22	1					
158826	Coupling, fuel pump drive half	1	22	2					
153218	Gasket	1	22	3					
159236	Gear, accessory drive	1	22	4					
S-301	Key	2	22	5					
S-316	Key	1	22	6					
170662	Shaft	1	22	7					
BM-77360	Support, accessory drive	1							
139810	Bushing, compressor drive	1	22	8					
147328	Support, compressor	1	22	9					
116390	Washer, clamping	1	22	10					
170664	Washer, plain	1	22	11					
116389	Washer, thrust	2	22	12					
S-119	Capscrew	1	22	13					
67857	Dowel	1							
S-911-B	Plug, pipe	1	22	15					
139796	Slinger, oil	1	22	16					
S-605	Washer	1	22	17					

PARTS INDENTED ARE INCLUDED IN THE PART UNDER WHICH THEY ARE INDENTED

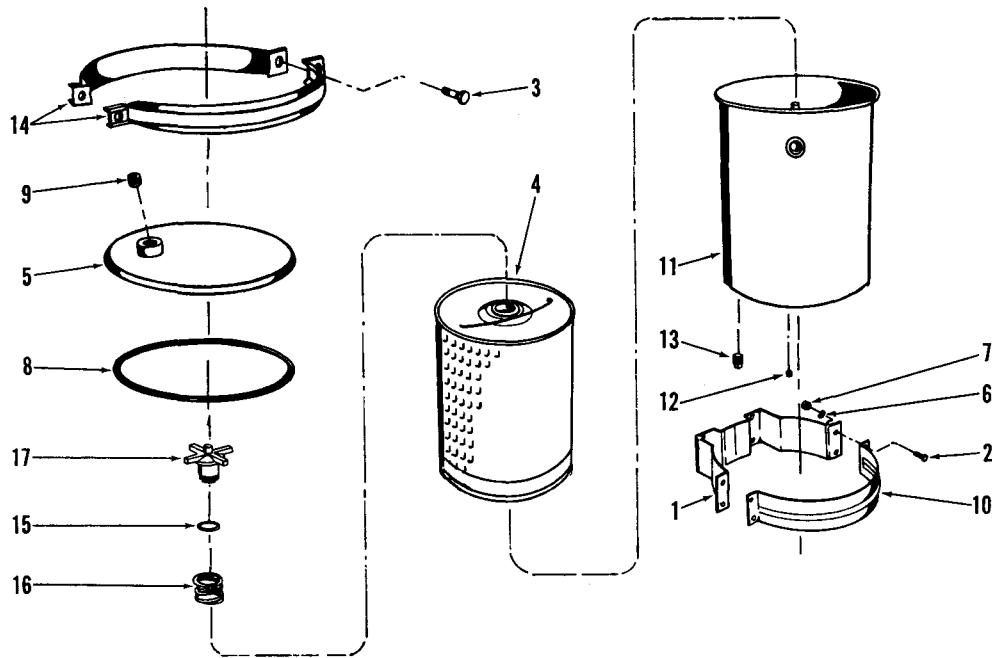


Figure 23  
LUBRICATING OIL BY-PASS FILTER

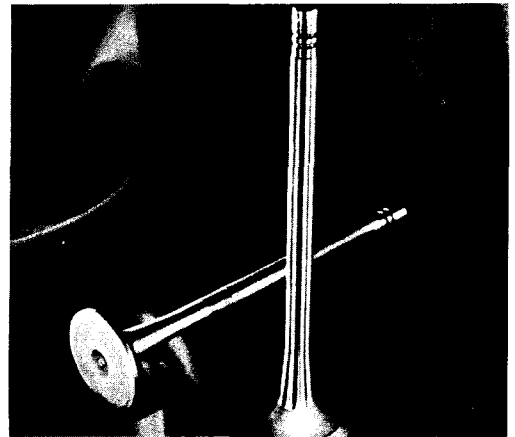
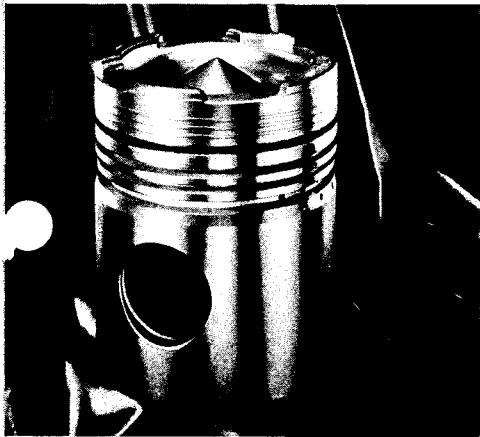
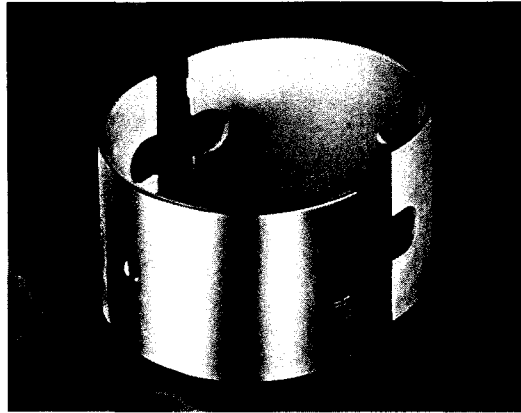
Part Number	Part Name	No. Req.	Fig. No.	Ref. No.	Part Number	Part Name	No. Req.	Fig. No.	Ref. No.
159707	Filter, lubricating oil (500)	1							
145664	Bracket, filter	1	23	1					
70188	Capscrew, bracket	8	23	2					
164614	Capscrew	2	23	3					
136500	Cartridge	1	23	4					
150040	Cover	1	23	5					
70189	Lockwasher, bracket	8	23	6					
70299	Nut, mounting bracket	8	23	7					
164159	"O" ring, cover	1	23	8					
S-908	Plug, cover	1	23	9					
145665	Strap, mounting	2	23	10					
250721	Shell, filter	1	23	11					
157152	Decal, filter	1							
131911	Orifice, plug #6	1	23	12					
S-908	Plug, drain	1	23	13					
164613	Ring assembly, clamping	1	23	14					
250719	Support, upper	1							
116029	"O" ring, support	1	23	15					
150037	Spring, hold down	1	23	16					
150036	Support, upper	1	23	17					

PARTS INDENTED ARE INCLUDED IN THE PART UNDER WHICH THEY ARE INDENTED

Part Number	Part Name	No. Req.	Fig. No.	Ref. No.	Part Number	Part Name	No. Req.	Fig. No.	Ref. No.
<b>FLYWHEELS, RING GEARS AND FLYWHEEL HOUSINGS</b>  Flywheel, flywheel housings and ring gears have been designed to adapt the Cummins Diesel to hundreds of different installations. For this reason, these assemblies are not listed. Your Cummins Distributor will record flywheel, flywheel housing and ring gear part numbers in the front of this book.					<b>GENERATOR MOUNTING</b>  160155 Brace, generator bracket 1 139394 Bracket, front 1 160606 Bracket, rear 1 103023 Capscrew 3 S-150 Capscrew 1 S-103-D Capscrew 1 S-140 Capscrew 1 S-112 Capscrew 1 S-145 Capscrew 1 S-155 Capscrew 2 42568 Fan 1 117646 Link, adjusting 1 S-610 Lockwasher 5 S-606 Lockwasher 4 S-200 Nut 1 S-217 Nut 2 62618 Spacer 1 S-1319 Screw 4 S-622 Washer, plain 2 S-601 Washer, plain 1 S-602 Washer, plain 1 S-608 Washer, plain 2 S-670 Washer, plain 1				
<b>GASKET SETS</b>  BM-50020 Engine gasket set 1 BM-77918 Cylinder head gasket set 1 BM-68356 Fuel pump gasket set 1					<b>STARTER MOUNTING</b>  S-103-A Capscrew 3 S-603 Lockwasher 3				
<b>ELECTRICAL EQUIPMENT</b>  Electrical equipment is not manufactured by the Cummins Engine Company, Inc. Complete service for electrical equipment may be obtained from the manufacturers, The Delco-Remy Company at Anderson, Indiana, The Levee-Neville Company at Cleveland, Ohio, or from their service stations. Address of nearest service station may be obtained from the manufacturer.									
70885	Belt, generator	1							
66735	Gauge, oil pressure	1							
43813	Generator	1							
43812	Motor, starting	1							
101077	Pulley, generator	1							
42796	Regulator, voltage	1							
68813	Resistor, preheater	1							
118947	Switch, magnetic	1							
102846	Switch, ignition	1							
66733	Gauge, fuel oil pressure	1							

PARTS INDENTED ARE INCLUDED IN THE PART UNDER WHICH THEY ARE INDENTED

FOR PERFORMANCE YOU CAN COUNT ON



SPECIFY CUMMINS REPLACEMENT PARTS