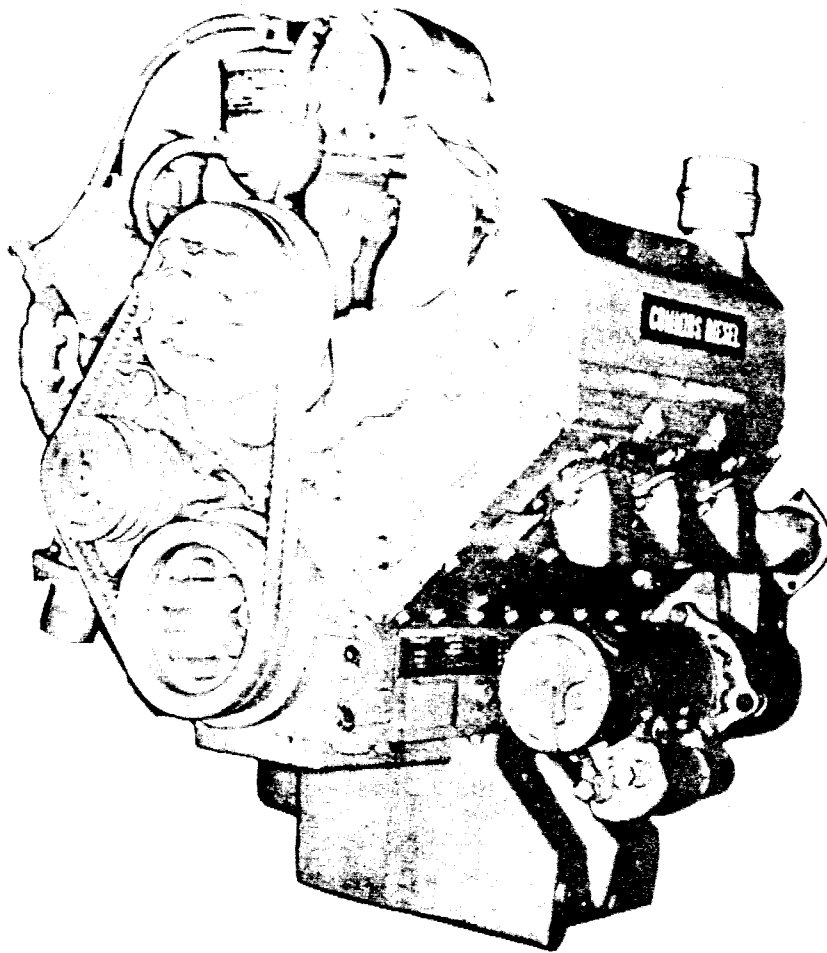


# **Cummins Parts Catalog**

Model: V-378 Series

Bulletin: 967140 – D



## Parts Ordering for: V-378 Series

Genuine Cummins Parts and service facilities are world-wide. There are more than 2400 Cummins Sales and Service locations in the principal cities of the United States and Canada, and more than 500 Sales and Service locations situated elsewhere throughout the free world. Each distribution outlet is thoroughly equipped with technical data, factory-trained mechanics, modern equipment and a full, adequate stock of Genuine Cummins Parts.

For quicker and better service, your parts requirements should be ordered from your nearest Cummins Distributor or Dealer. At any of the locations prompt, intelligent, courteous service is a basic trademark. Each is ready and eager to help in every possible way through personal contact or through the mail — at your convenience.

The satisfactory ordering and receiving of parts by the purchaser is greatly dependent upon the proper use of available information. In order that all avoidable errors may be eliminated, the following instructions are offered as the purchaser's guide:

1. Write your order clearly, using a typewriter if possible.

2. Be sure to list the correct part number. If in doubt as to the correct part number, state the model and serial number of the engine on which the part is to be used. Part numbers are usually located in various places on the part itself.

3. When possible, arrange your purchase order in part number numerical sequence.

4. Always specify shipping instructions — "Best Way" is satisfactory if you have no preference

5. State your company name and shipping address clearly.

Genuine Cummins Parts mean **QUALITY!** They're designed and engineered to fit best in your Cummins Diesel. Each part is made of the highest quality material — on the most accurate of machines — by the top craftsmen of the trade.

You can be sure a Genuine Cummins Part will fit better — do the job better — lessen the chances of costly breakdown. When you buy replacement parts, buy quality. Buy Genuine Cummins Parts!

**YOU OWN THE BEST . . . REPAIR WITH THE BEST**

# CUSTOMER SERVICE INFORMATION

This Parts Catalog contains standard parts information for the V-378 Series Naturally Aspirated engines.

Part numbers appearing in ( ) are for identification purposes only and should not be used when ordering service replacement parts.

The form below is provided for your convenience and when properly filled out, will allow proper identification of your unit and the normal maintenance items. Parts information errors that could cause extended down time could be avoided if the information on this form is referred to when ordering parts from your Cummins Distributor or Dealer.

## ALWAYS SPECIFY ENGINE MODEL AND SERIAL NUMBER WHEN ORDERING PARTS FROM THIS CATALOG

Engine Model \_\_\_\_\_ Engine Serial No. \_\_\_\_\_ Fuel Pump Assembly No. \_\_\_\_\_

Installed In \_\_\_\_\_ Model \_\_\_\_\_ Chassis No. \_\_\_\_\_

### MAINTENANCE ITEMS - REPLACEMENT REFERENCE NUMBERS

#### Belts

Alternator \_\_\_\_\_

Fan \_\_\_\_\_

Water Pump \_\_\_\_\_

Power Steering \_\_\_\_\_

Air Conditioner \_\_\_\_\_

#### Filter Elements

Air \_\_\_\_\_

Breather \_\_\_\_\_

Fuel \_\_\_\_\_

Lubricating \_\_\_\_\_

Water \_\_\_\_\_

### OTHER SPECIAL EQUIPMENT

---

---

---

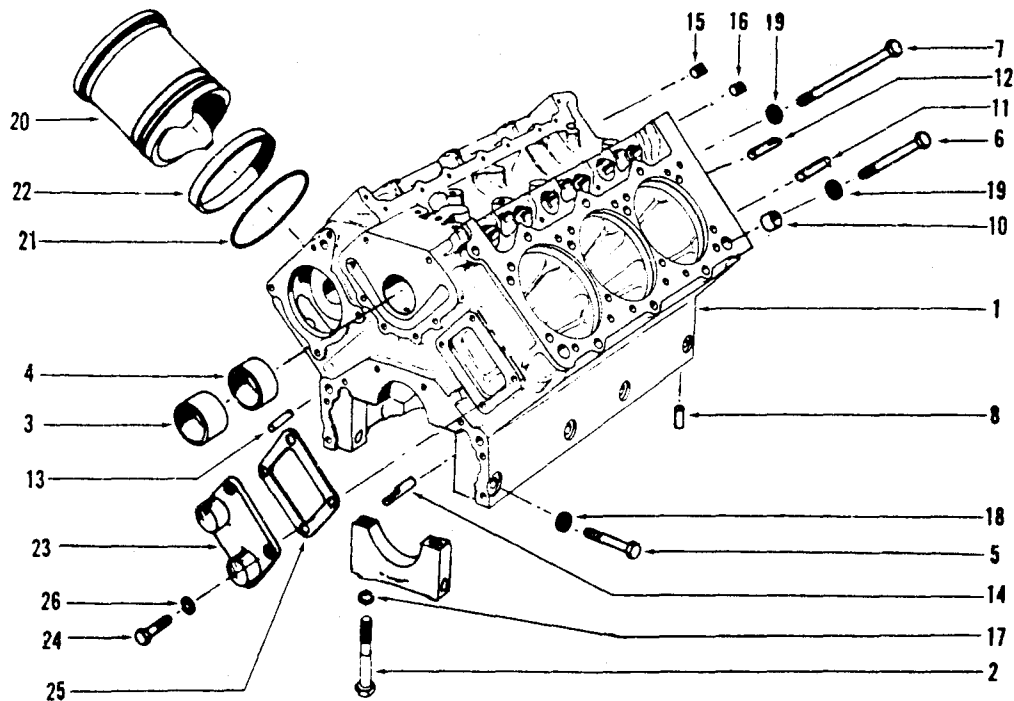
---

---

Cummins Distributor \_\_\_\_\_

# Table of Contents

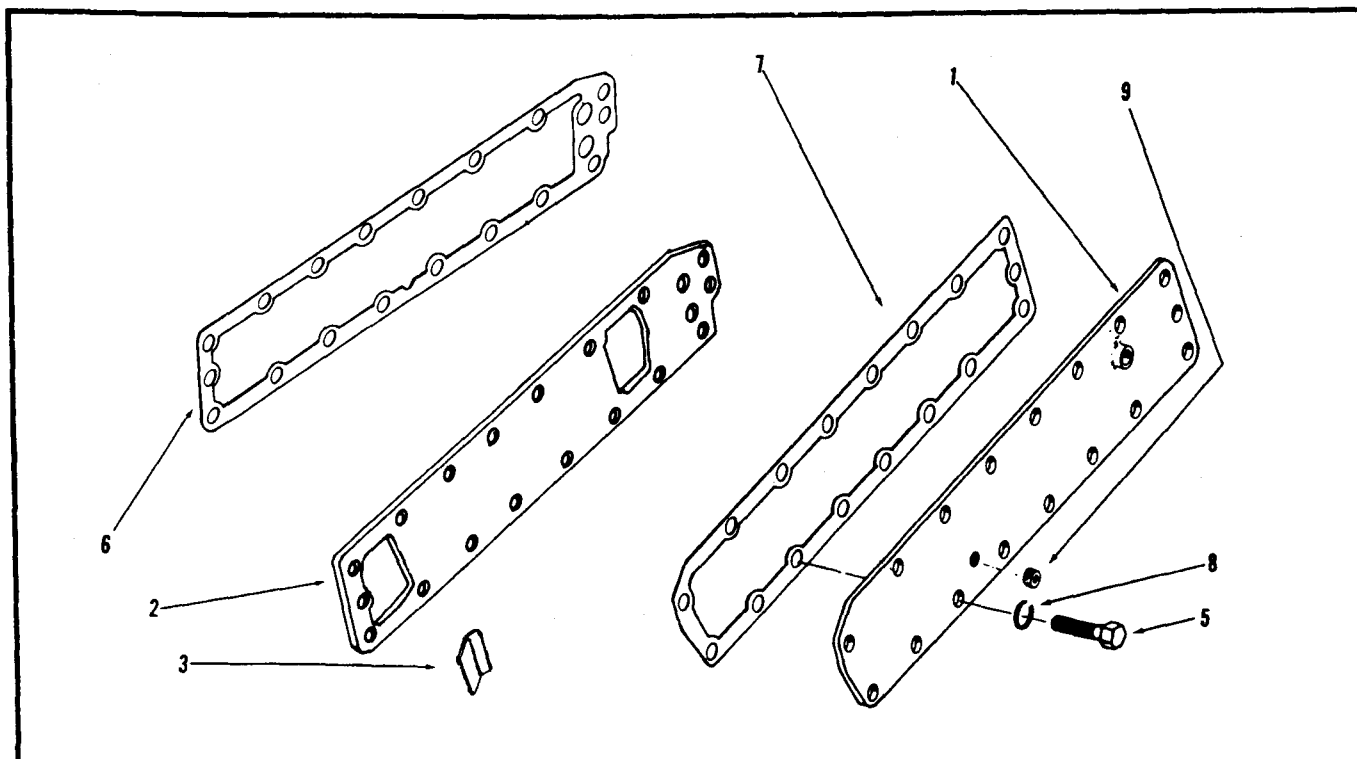
	Page		Page
Air Compressor – Cummins Compact	25 & 26	Fuel Pump Damper	29 & 30
Air Intake Manifold	22	Fuel Pump	29 & 30
Air Cleaner	23 & 24	Fuel Tubing	29 & 30
Alternator	32	Gasket Sets	34
Camshaft and Cover	6	Gear Housing and Cover	11
Camshaft Bushings	1	Injector	31
Connecting Rod	4	Instrument Panel	33
Corrosion Resistor	21	Lubricating Oil Cooler	16
Crank shaft	3	Lubricating Oil Filter	14
Cylinder Block	1	Lubricating Oil By-Pass Filter	15
Cylinder Head	9	Lubricating Oil Pump	12
Cylinder Head Cover	10	Main Bearing Shells	3
Cylinder Liner	1	Oil Pan	13
Dipstick and Tube	13	Pistons	4
Electrical Equipment	32	Piston Rings	4
Exhaust Manifold	27	Push Rods	7
Fan Hub	18	Radiator	33
Flywheel Housing	34	Rocker Levers	8
Flywheel and Ring Gear	34	Shutdown Valve	31
Front Cover	5	Starting Motor	32
Front Engine Support	5	Thermostat and Housing	19 & 20
Front Water Header Cover	1	Tappets	7
Fuel Filter	29 & 30	Vibration Damper	3
Fuel Gear Pump	29 & 30	Water Header Cover	2
Fuel Pump Drive	28	Water Pump and Pulley	17



ENGINE APPLICATION AUTOMOTIVE ☒ B-OFF-HIGHWAY C-CONSTRUCTION & INDUSTRIAL ☒ P-INDUSTRIAL POWER ☒

PART NUMBER	PART NAME	NO. REQ'D	REF. NO.	PART NUMBER	PART NAME	NO. REQ'D	REF. NO.
<b>CYLINDER BLOCK</b>				<b>MOUNTING PARTS</b>			
AR-60778	Block, cylinder (553590)	1	1	AR-60170	Kit, cylinder liner	6	
180676	Bolt, main bearing	8	2	554311	Liner, cylinder	6	20
554003	Bushing, cam (1 & 4)	2	3	171270	Packing, cylinder liner	6	21
554004	Bushing, cam (2 & 3)	2	4	171880	Seal, crevice	6	22
188395	Capscrew, main bearing side locking	8	5	554776	Nameplate	1	
162182	Capscrew, cylinder head - short	20	6	S-2286	Screw, mounting	4	
162183	Capscrew, cylinder head - long	8	7				
148547	Dowel ring main bearing cap (Diamond)	2	8	<b>FRONT WATER HEADER COVER</b>			
100973	Dowel ring, cylinder head to block	4	10	551455	Cover, water header (C Application)	1	23
69562	Dowel ring, cylinder head to block (Master)	2	11	167801	Cover, water header (Auto Application)	1	23
102957	Dowel ring, cylinder head to block (Diamond)	2	12	183307	Cover, water header (P. Application)	1	23
70645	Dowel, front cover to block	1	13	S-112	Capscrew (Auto & C Application)	4	24
68568	Dowel, front cover to block	1	14	S-172-B	Capscrew (P Application only)	4	24
161825	Plug, expansion	2	15	167802	Gasket Cover	1	25
S-911-B	Plug, pipe (1/8")	3	16	S-604	Lockwasher (3/8")	4	26
164601	Washer, main bearing cap	8	17	171786	Shim, liner (.007)	A/R	
188394	Washer, main bearing side locking	8	18	171787	Shim, liner (.010)	A/R	
153411	Washer, cylinder head capscrew	28	19	171788	Shim, liner (.012)	A/R	
				171789	Shim, liner (.014)	A/R	
				171790	Shim, liner (.021)	A/R	
				<b>OVERSIZE FOR SERVICE</b>			

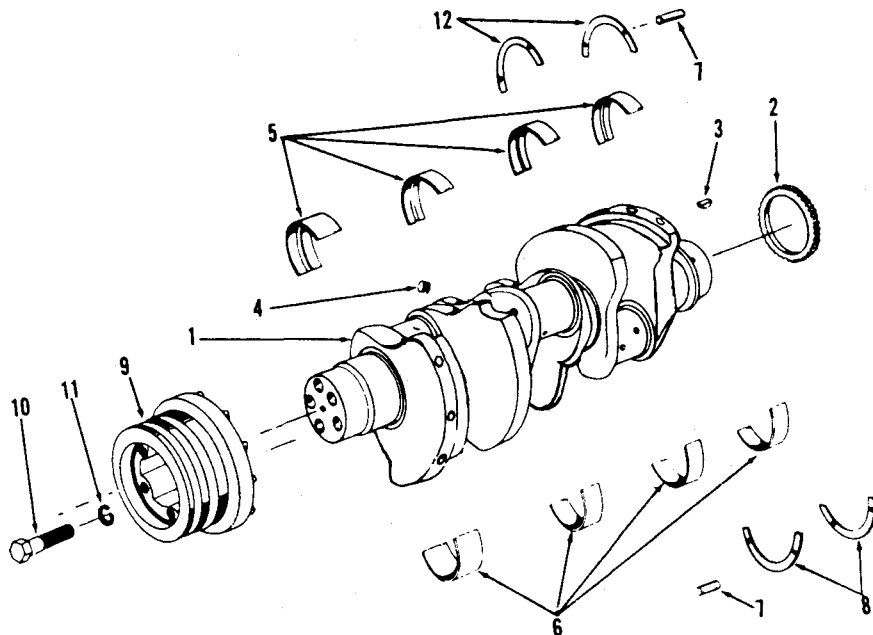
PARTS INDENTED ARE INCLUDED IN THE PART UNDER WHICH THEY ARE INDENTED



ENGINE APPLICATION    AUTOMOTIVE ☒ B-OFF-HIGHWAY    C-CONSTRUCTION & INDUSTRIAL ☒ P-INDUSTRIAL POWER ☒

PART NUMBER	PART NAME	NO. REQ'D	REF. NO.	PART NUMBER	PART NAME	NO. REQ'D	REF. NO.
<b>WATER HEADER COVER</b>				<b>MOUNTING PARTS</b>			
167779	Cover, water header (L.B.)	1	1	S-109	Capscrew (3/8" - 16 x 7/8")	27	5
BM-97543	Cover and baffle (R.B.)	1		176597	Gasket, water header (R.B.)	1	6
553813	Cover, water header	1	2	167778	Gasket, water header cover (L.B.)	1	7
175428	Baffle	1	3	S-604	Lockwasher (3/8")	27	8
				S-908	Plug, pipe (3/8")	1	
				68606	Plug, pipe (1/8")	1	9

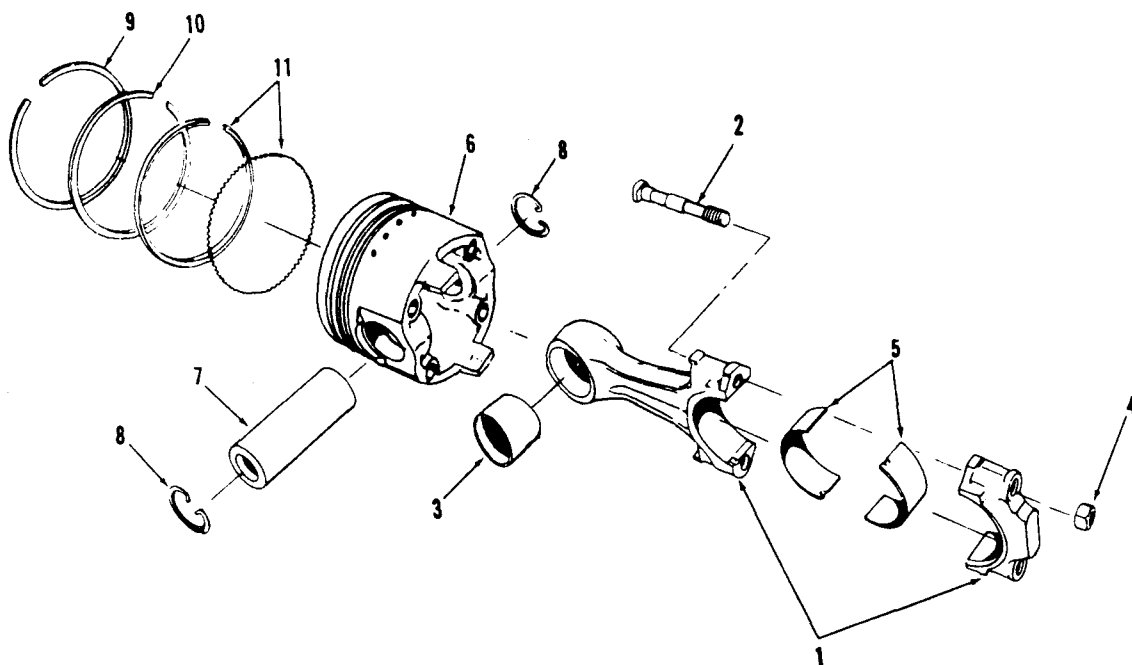
PARTS INDENTED ARE INCLUDED IN THE PART UNDER WHICH THEY ARE INDENTED



ENGINE APPLICATION    AUTOMOTIVE ☒    B-OFF-HIGHWAY    C-CONSTRUCTION & INDUSTRIAL ☒    P-INDUSTRIAL POWER ☒

PART NUMBER	PART NAME	NO. REQ'D	REF. NO.	PART NUMBER	PART NAME	NO. REQ'D	REF. NO.
<b>CRANKSHAFT</b>							
AR-60774	Crankshaft assembly	1					
195240	Crankshaft	1	1				
177086	Gear	1	2				
144131	Key	1	3				
S-911-B	Plug pipe (1/8")	3	4				
<b>MAIN BEARING SET</b>							
BM-99830*	Bearing set, main (Std)	1					
182320	Main bearing (upper 1 and 5)	2	5				
182400	Main bearing (upper 2, 3, 4)	2	5				
182200	Main bearing (lower 1 and 5)	2	6				
182210	Main bearing (lower 2, 3, 4)	2	6				
148547	Dowel	2	7				
173640	Ring, half thrust (lower)	2	8				
553670	Ring, half thrust (upper)	2	12				
<b>VIBRATION DAMPER</b>							
193079	Damper, vibration	1	9				
S-149-B	Capscrew (1/2" - 20 x 1 1/2")	5	10				
S-608	Lockwasher (1/2")	5	11				
554032	Capscrew (Ford only)	5	10				
* Main bearings may be purchased in .010", .020" and .030" undersize.							

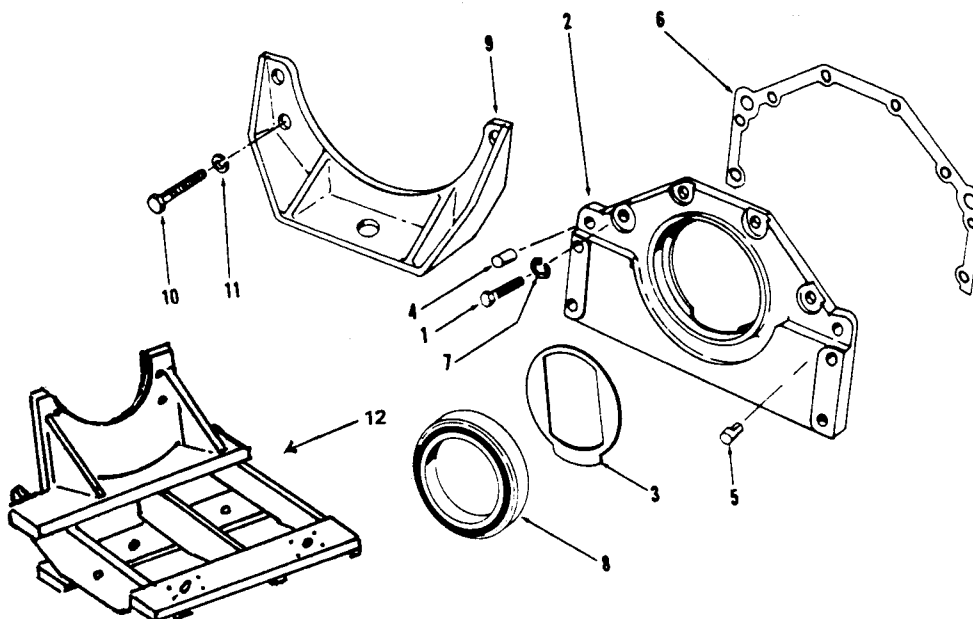
PARTS INDENTED ARE INCLUDED IN THE PART UNDER WHICH THEY ARE INDENTED



ENGINE APPLICATION		AUTOMOTIVE <input checked="" type="checkbox"/>		B-OFF-HIGHWAY <input type="checkbox"/>		C-CONSTRUCTION & INDUSTRIAL <input checked="" type="checkbox"/>		P-INDUSTRIAL POWER <input type="checkbox"/>	
PART NUMBER	PART NAME	NO. REQ'D	REF. NO.	PART NUMBER	PART NAME	NO. REQ'D	REF. NO.		
	<b>CONNECTING ROD</b>				<b>PISTON</b>				
BM-78784	Rod, connecting (166452)	6	1	AR-60740	Piston, assembly (Std)	6			
551143	Bolt, connecting rod (7/16" - 20 x 3.5/16")	12	2	200800	Piston	6	6		
195360	Bushing, piston pin	6	3	151770	Pin, piston	6	7		
152838	Nut, connecting rod bolt (7/16")	12	4	157978	Ring, snap	12	8		
157620*	Bearing, connecting rod (Std)	12	5		<b>RINGS</b>				
				AR-61500	Ring set, piston (Std)	6			
				201650	Ring, compression (Top)	6	9		
				208990	Ring, compression	6	10		
				201645	Ring, oil	6	11		
	* Connecting rod bearing shells may be purchased in .010", .020" and .030" undersize.								

PARTS INDENTED ARE INCLUDED IN THE PART UNDER WHICH THEY ARE INDENTED

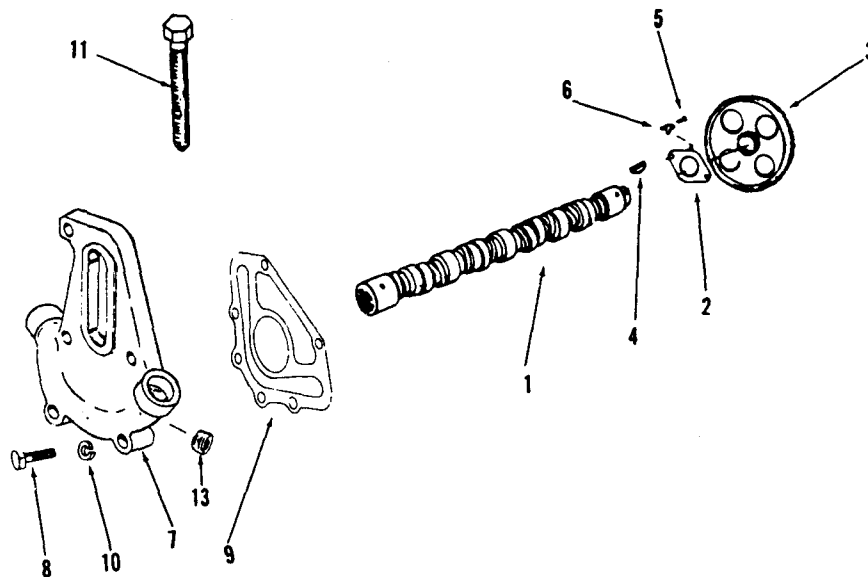




ENGINE APPLICATION    AUTOMOTIVE ☒ B-OFF-HIGHWAY    C-CONSTRUCTION & INDUSTRIAL ☒ P-INDUSTRIAL POWER ☒

PART NUMBER	PART NAME	NO. REQ'D	REF. NO.	PART NUMBER	PART NAME	NO. REQ'D	REF. NO.
<b>FRONT COVER</b>				<b>FRONT SUPPORT</b>			
S-109	Capscrew (3/8" - 16 x 7/8")	4	1	553640	Support, engine front (IP)	1	12
188393	Cover, front	1	2	188397	Support, engine front (Auto and CI)	1	9
173090	Deflector, oil	1	3				
70645	Dowel (Master)	1	4	106289	Capscrew (1/2" - 13 x 2 1/4")	4	10
68568	Dowel (Diamond)	1	5	S-608	Washer (1/4")	4	11
188396	Gasket, cover	1	6				
S-604	Lockwasher (3/8")	4	7				
551514	Seal, crankshaft	1	8				

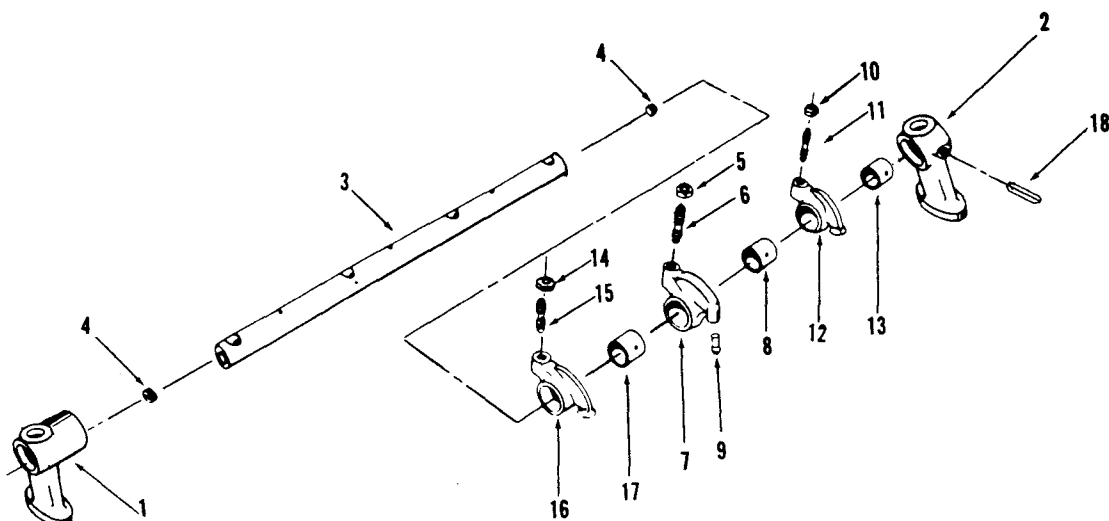
PARTS INDENTED ARE INCLUDED IN THE PART UNDER WHICH THEY ARE INDENTED



ENGINE APPLICATION		AUTOMOTIVE		X B-OFF-HIGHWAY		C-CONSTRUCTION & INDUSTRIAL		X P-INDUSTRIAL POWER		X	
PART NUMBER	PART NAME	NO. REQ'D	REF. NO.	PART NUMBER	PART NAME	NO. REQ'D	REF. NO.	PART NUMBER	PART NAME	NO. REQ'D	REF. NO.
	CAMSHAFT				CAMSHAFT COVER						
201060	Camshaft	1	1	556493*	Cover, cam (fan bracket, water						
167305	Bearing, camshaft thrust	1	2		crossover)	1	7				
187649	Gear, camshaft	1	3	108707	Capscrew (3/8" - 16 x 1½")	2	8				
S-313	Key, camshaft	1	4	S-103-D	Capscrew (3/8" - 16 x 1¼")	2	8				
				S-104	Capscrew (3/8" - 16 x 2¼")	2	8				
	MOUNTING PARTS			555195	Connection, water transfer	2					
				550164	Gasket, cover	1	9				
S-107	Capscrew, thrust bearing			S-604	Lockwasher (3/8")	6	10				
	(5/16" - 18 x ¾")	2	5	555198	"O" ring	4					
68908-A	Lockplate, thrust bearing	2	6	182706	Screw, fan adjusting	1	11				
				S-911-B	Plug, pipe (1/8")	1	13				
* NOTE: Also listed on page 18 and 20											

PARTS INDENTED ARE INCLUDED IN THE PART UNDER WHICH THEY ARE INDENTED

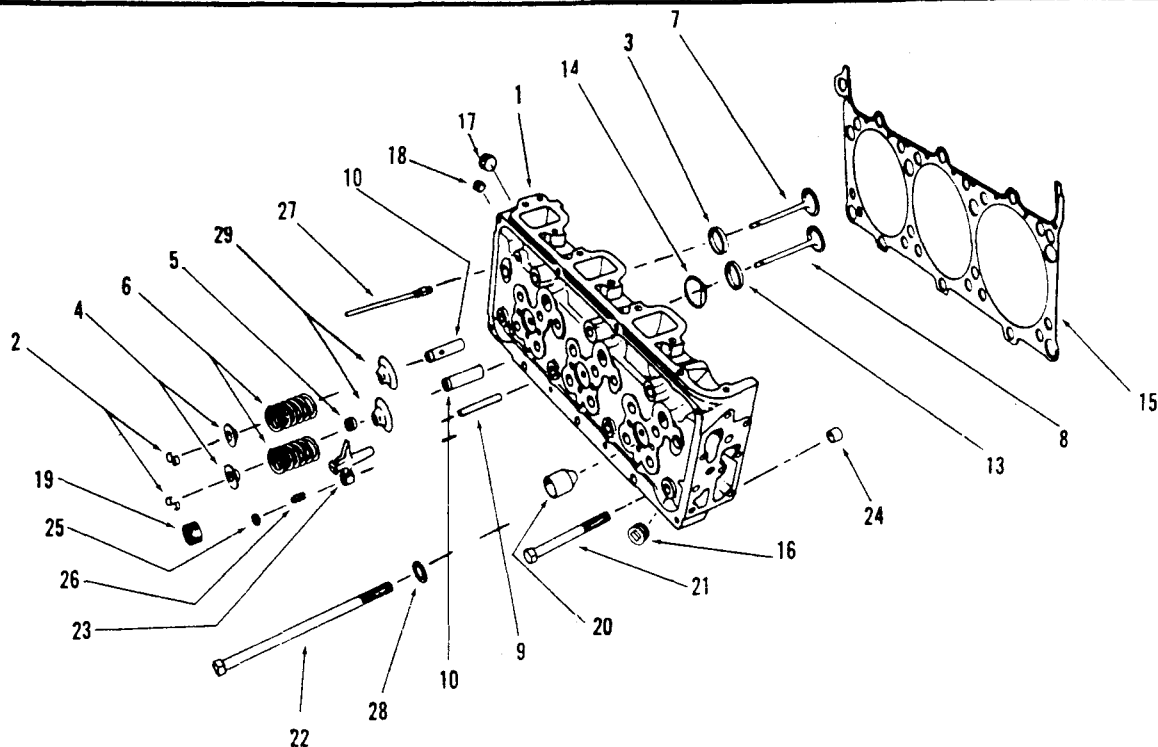




ENGINE APPLICATION	AUTOMOTIVE X	B-OFF-HIGHWAY	C-CONSTRUCTION & INDUSTRIAL X	P-INDUSTRIAL POWER X
--------------------	--------------	---------------	-------------------------------	----------------------

PART NUMBER	PART NAME	NO. REQ'D	REF. NO.	PART NUMBER	PART NAME	NO. REQ'D	REF. NO.
<b>ROCKER LEVERS</b>							
154109	Bracket, rocker lever shaft	6	1				
551608	Bracket, rocker lever shaft	2	2				
AR-60595	Shaft, rocker lever (551606)	2	3				
161825	Plug	4	4				
BM-99987	Lever, injector rocker (194038)	6					
S-212	Nut, adjusting screw	6	5				
168306	Screw, adjusting (1/2")	6	6				
BM-99986	Lever and bushing	6	7				
152936	Bushing, injector rocker lever	6	8				
194037	Socket, injector link	6	9				
BM-79725	Lever, intake rocker (168255)	6					
S-212	Nut, adjusting screw	6	10				
168306	Screw, adjusting (1/2")	6	11				
BM-79724	Lever and bushing	6	12				
152937	Bushing, valve rocker lever	6	13				
BM-79723	Lever, exhaust valve rocker (168285)	6					
S-212	Nut, adjusting screw	6	14				
168306	Screw, adjusting (1/2")	6	15				
BM-79722	Lever and bushing	6	16				
152937	Bushing, valve rocker lever	6	17				
551609	Pin, rocker shaft locating	2	18				

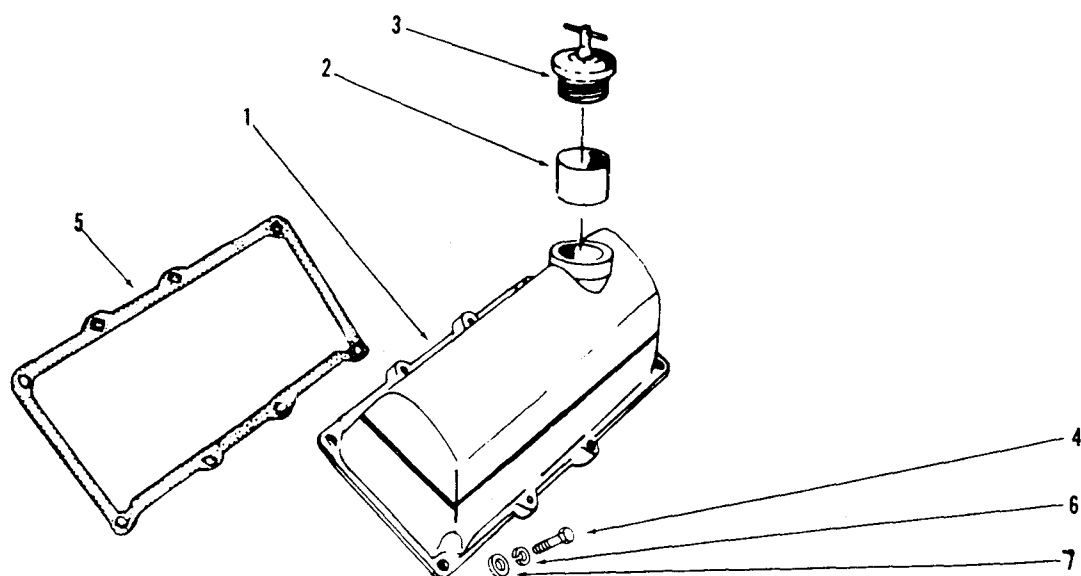
PARTS INDENTED ARE INCLUDED IN THE PART UNDER WHICH THEY ARE INDENTED



ENGINE APPLICATION    AUTOMOTIVE X    B-OFF-HIGHWAY    C-CONSTRUCTION & INDUSTRIAL X    P-INDUSTRIAL POWER X

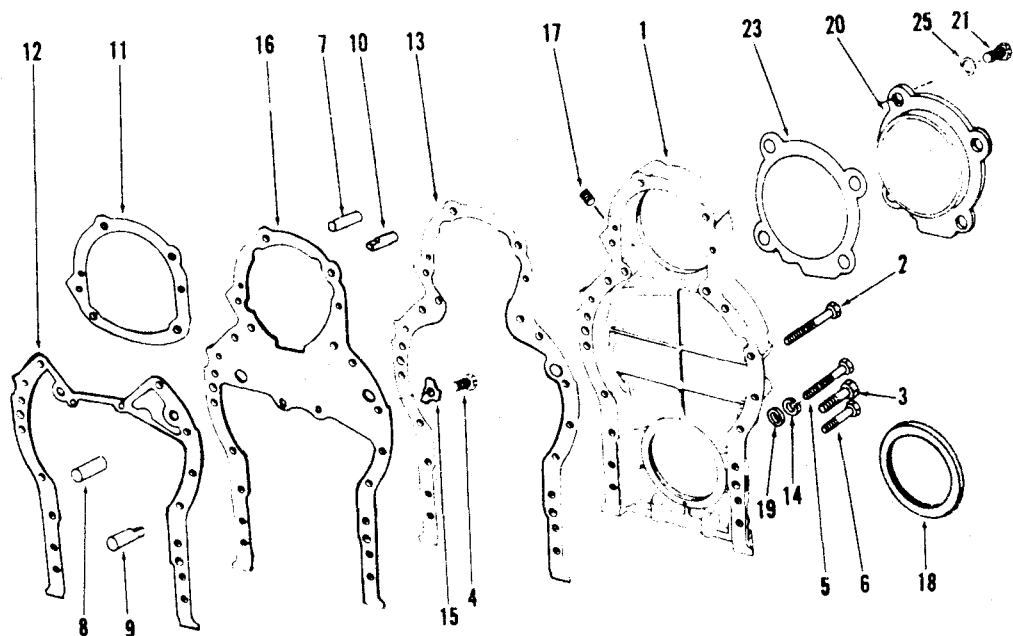
PART NUMBER	PART NAME	NO. REQ'D	REF. NO.	PART NUMBER	PART NAME	NO. REQ'D	REF. NO.
<b>CYLINDER HEAD</b>				<b>CYLINDER HEAD GASKET</b>			
AR-60776	Head assembly, cylinder (152143)	2	1	AR-62070	Gasket, cylinder head (555623) (Std)	2	15
166772	Collet, valve half	48	2	156081	Grommet	4	
155441	Retainer, valve spring	24	4	209658	Grommet, water	24	
156541	Seal, intake valve	12	5	209656	Grommet, push tube opening	2	
163037	Spring, valve	24	6	553019	"O" ring	4	
166774	Valve, exhaust	12	7	553743	Grommet	16	
166774	Valve, intake	12	8				
553811	Wearplate, valve spring	24	29	<b>SERVICE OPTIONAL</b>			
AR-60777	Head, cylinder (less valves)	2		AR-62077	Gasket, cylinder head (.010)	A/R	
154220	Guide, crosshead	12	9	AR-62078	Gasket, cylinder head (.020)	A/R	
154946	Guide, valve intake and exhaust	24	10				
195000	Insert, intake valve seat	12	13				
196641	"O" ring	6					
553461	Plate, swirl	12	14				
551475	Plug, cup	6					
554416	Plug, pipe	12	16				
S-910-B	Plug, pipe (1/4" NPTF)	2	17				
S-911-B	Plug, pipe (1/8" NPTF)	2	18				
S-995	Plug, pipe (3/4" NPTF)	6	19				
169630	Sleeve, injector	6	20				
154390	Insert, exhaust valve seat	12	3				
<b>MOUNTING PARTS</b>							
162182	Capscrew, cylinder head (short)	20	21				
162183	Capscrew, cylinder head (long)	8	22				
156879	Crosshead, valve	12	23				
100973	Dowel, ring, cylinder head to block	4	24				
S-273	Nut, crosshead adjusting	12	25				
190817	Retainer, crosshead (Auto & CI)	6					
147389	Screw, crosshead adjusting	12	26				
BM-78775	Tube, vent (153882)	2	27				
S-1003-1	Connector, tubing	2					
S-1022-A	Nut, tube	2					
153411	Washer, cylinder head	28	28				

PARTS INDENTED ARE INCLUDED IN THE PART UNDER WHICH THEY ARE INDENTED



ENGINE APPLICATION		AUTOMOTIVE X		B-OFF-HIGHWAY		C-CONSTRUCTION & INDUSTRIAL X		P-INDUSTRIAL POWER X	
PART NUMBER	PART NAME	NO. REQ'D	REF. NO.	PART NUMBER	PART NAME	NO. REQ'D	REF. NO.		
<b>CYLINDER HEAD COVER</b>									
AR-60375	Cover, valve R-B (C & P Application)	1							
552383	Cover, valve R-B (C & P Application)	1	1						
550113	Tube filler R-B (C & P Application)	1	2						
AR-60691	Cover, valve R-B (Auto Application)	1							
552384	Cover, valve R-B (Auto Application)	1	1						
550113	Tube, filler R-B (Auto Application)	1	2						
553521	Cover, valve (L-B)	1							
101322	Cap, filler (Auto)	1	3						
107981	Cap, filler (C & P Applications)	1	3						
<b>MOUNTING PARTS</b>									
108707	Capscrew (3/8" - 16 x 1 1/2")	16	4						
154019	Gasket, valve cover	2	5						
S-604	Lockwasher (3/8")	16	6						
S-602	Washer, plain (3/8")	16	7						
554833	Nameplate label	2							

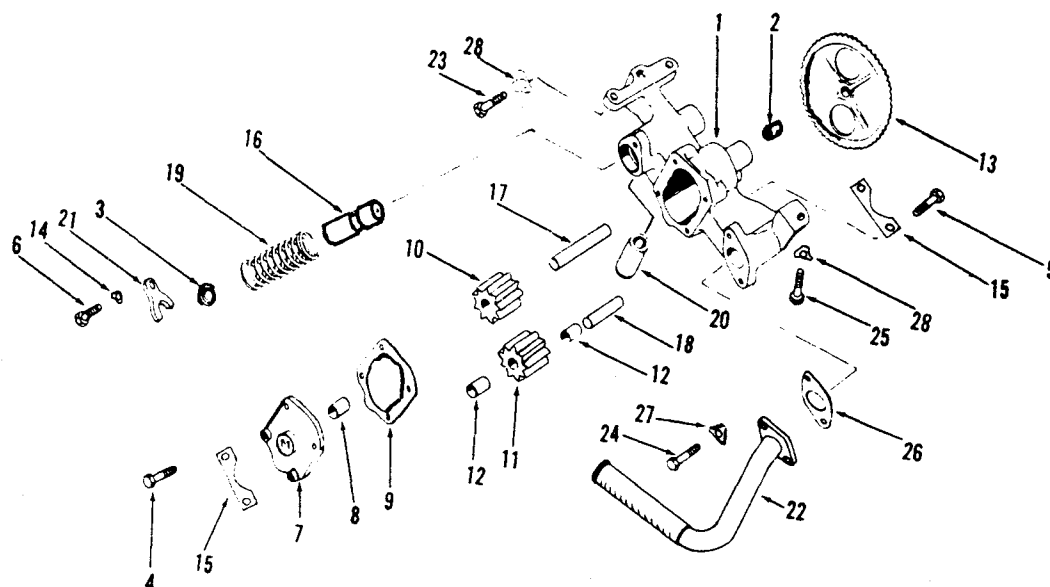
PARTS INDENTED ARE INCLUDED IN THE PART UNDER WHICH THEY ARE INDENTED



ENGINE APPLICATION	AUTOMOTIVE	X	B-OFF-HIGHWAY	C-CONSTRUCTION & INDUSTRIAL	X	P-INDUSTRIAL POWER	X
--------------------	------------	---	---------------	-----------------------------	---	--------------------	---

PART NUMBER	PART NAME	NO. REQ'D	REF. NO.	PART NUMBER	PART NAME	NO. REQ'D	REF. NO.
<b>GEAR HOUSING</b>				<b>C &amp; IP Applications</b>			
<b>Auto Application</b>				<b>Same as Auto except:</b>			
168644	Housing, gear	1	1				
S-109	Capscrew (3/8" - 16 x 7/8")	2	4	172645	Housing, gear (C)	1	1
108707	Capscrew (3/8" - 16 x 1 1/2")	6	6	171627	Housing, gear (IP)	1	1
S-126	Capscrew (3/8" - 16 x 2 1/2")	2	5				
S-102-D	Capscrew (3/8" - 16 x 3")	1	2				
S-104	Capscrew (3/8" - 16 x 2 1/4")	6	3				
9089	Dowel (Master)	1	7	<b>OMIT</b>			
69562	Dowel (Master)	1	8	S-602	Washer, plain (3/8")	14	19
102957	Dowel (Diamond)	1	9				
153807	Dowel (Diamond)	1	10	<b>ADD</b>			
168649	Gasket, plate to block	1	12	S-965-E	Plug, pipe (1/16")	1	
168650	Gasket, gear housing	1	13				
167993	Gasket, compressor support	1	11				
S-604	Lockwasher (3/8")	14	14				
175282	Lockplate	2	15				
551467	Plate, gear housing	1	16	555245	Cover, gear housing	1	20
69901	Plug, hex	2	17	S-102	Capscrew (5/16" - 18 x 1")	4	21
551515	Seal, rear crankshaft	1	18	153433	Gasket Support	1	23
S-602	Washer, plain (3/8")	14	19	S-604	Lockwasher (3/8")	4	25
				<b>GEAR HOUSING COVER</b>			
				<b>Auto Application Only</b>			

PARTS INDENTED ARE INCLUDED IN THE PART UNDER WHICH THEY ARE INDENTED

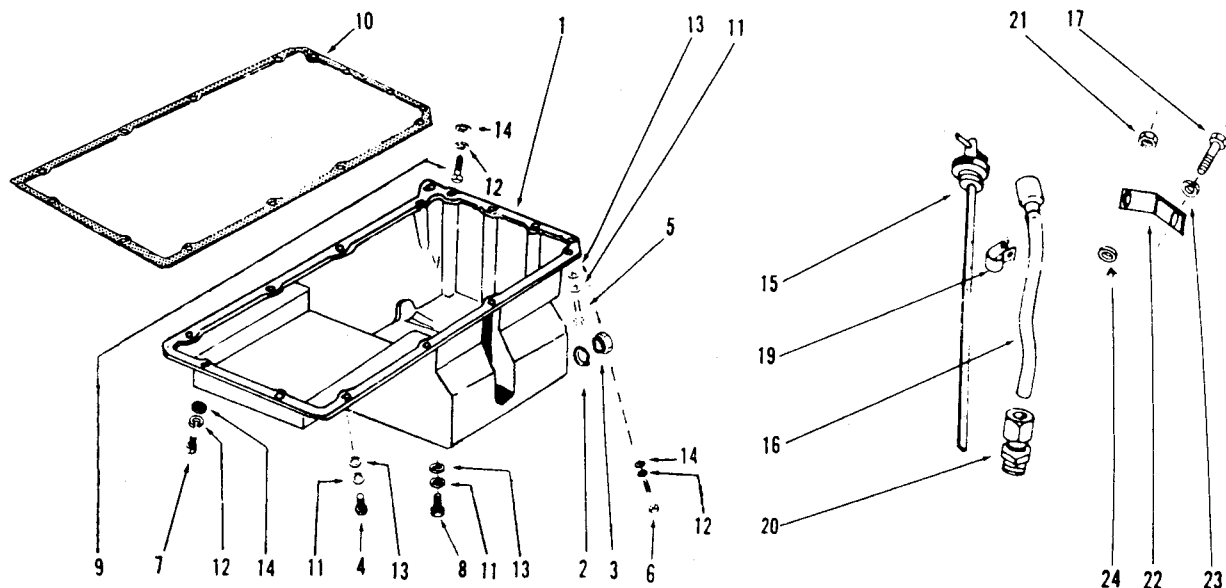


ENGINE APPLICATION	AUTOMOTIVE	X	B-OFF-HIGHWAY	C-CONSTRUCTION & INDUSTRIAL	X	P-INDUSTRIAL POWER	X
--------------------	------------	---	---------------	-----------------------------	---	--------------------	---

PART NUMBER	PART NAME	NO. REQ'D	REF. NO.	PART NUMBER	PART NAME	NO. REQ'D	REF. NO.
<b>LUBRICATING OIL PUMP</b>				<b>MOUNTING PARTS</b>			
AR-60801	Pump, lubricating oil	1		S-103-D	Capscrew, pump to block (3/8" - 16 x 1 1/4")	2	23
AR-60089	Body and bushing (187011)	1	1	S-109	Capscrew, tube to pump (3/8" - 16 x 7/8")	2	24
68586	Bushing	1	2	S-112	Capscrew, pump to block (3/8" - 16 x 1")	1	25
175805	Cap, by-pass spring	1	3	164916	Gasket, tube to pump	1	26
S-107	Capscrew, cover to body (5/16" - 18 x 3/4")	2	4	109319	Lock plate, tube to pump	2	27
S-155-A	Capscrew, cover to body (5/16" - 18 x 2 1/2")	2	5	175282	Lock plate, pump to block	3	28
S-109	Capscrew, regulator (3/8" - 16 x 7/8")	1	6				
AR-60092	Cover and bushing (181165)	1	7				
68586	Bushing	1	8				
178283	Gasket, cover	1	9				
187012	Gear, idler drive	1	10				
AR-60090	Gear, idler (187013)	1	11				
68586	Bushing	2	12				
184044	Gear, main drive	1	13				
109319	Lock plate, regulator	1	14				
551117	Lock plate, cover to body	2	15				
183014	Plunger, pressure regulator	1	16				
178284	Shaft, drive	1	17				
190138	Shaft, idler	1	18				
551079	Spring, regulator	1	19				
554616	Tube, by-pass	1	20				
126304	Yoke, pressure regulator	1	21				
553268	Tube, suction assembly	1	22				

PARTS INDENTED ARE INCLUDED IN THE PART UNDER WHICH THEY ARE INDENTED

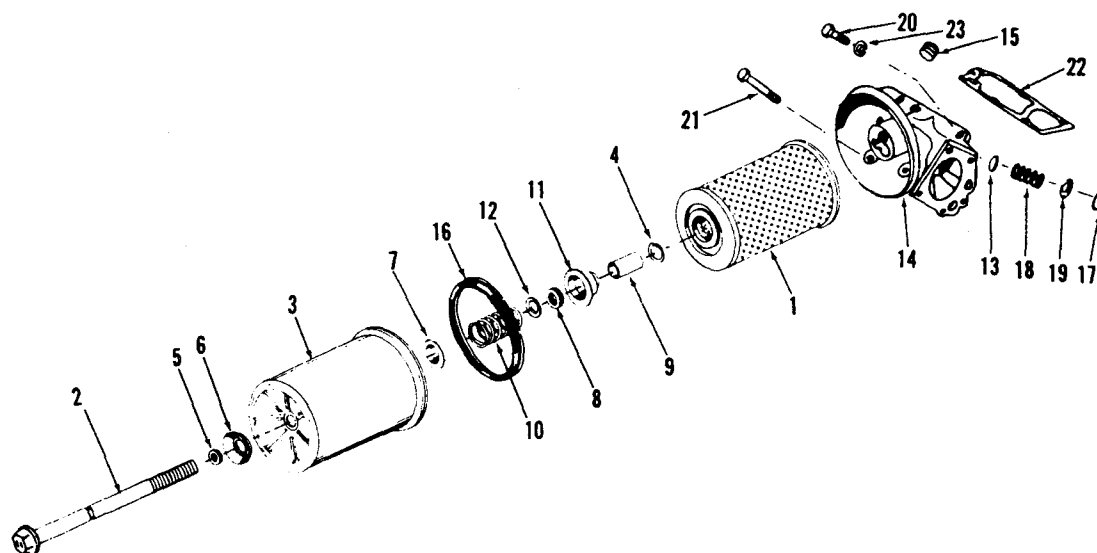




ENGINE APPLICATION AUTOMOTIVE ☒ B-OFF-HIGHWAY C-CONSTRUCTION & INDUSTRIAL ☒ P-INDUSTRIAL POWER ☒

PART NUMBER	PART NAME	NO. REQ'D	REF. NO.	PART NUMBER	PART NAME	NO. REQ'D	REF. NO.
<b>OIL PAN</b>				<b>DIPSTICK AND TUBE</b>			
553261	Pan oil, rear sump	1	1	<b>CI AND IP Applications</b>			
553856	Gasket, oil drain	1	2	553933	Dipstick	1	15
553855	Plug, oil drain	1	3	171634	Tube, dipstick	1	16
S-103-D	Capscrew (3/8" - 16 x 1 1/4")	6	4	S-109	Capscrew (3/8" - 16 x 7/8")	1	17
S-199-A	Capscrew (3/8" - 16 x 4")	2	5	554013	Clamp	1	19
S-124-C	Capscrew (5/16" - 18 x 4")	2	6	163759	Connection, dipstick tube	1	20
S-119	Capscrew (5/16" - 18 x 1 1/4")	2	7	S-604	Lockwasher (3/8")	1	23
S-117	Capscrew (3/8" - 16 x 3/4")	2	9	S-223	Nut (3/8")	1	21
175726	Gasket, oil pan	1	10	172036	Support, oil gauge tube (P Application)	1	22
S-604	Lockwasher (3/8")	8	11	S-602	Washer, plain (3/8")	1	24
S-605	Lockwasher (5/16")	6	12	550847	Support, oil gauge (C Application)	1	22
S-602	Washer, plain (3/8")	8	13	<b>Auto Application</b>			
S-626	Washer, plain (5/16")	6	14	554183	Dipstick	1	15
69901	Plug, hex	1		168978	Tube, dipstick	1	16
161704	Plug, pipe	1		S-188-C	Capscrew (1/4" - 20 x 1/2")	1	17
555601	Plug, pipe	1		S-224	Nut	1	21
553854	Insert, drain plug hole	1		554013	Clamp	1	19
550389	Capscrew	2	8	163759	Connection, dipstick tube	1	20
109319	Lockplate	2		S-600	Lockwasher (1/4")	1	
				168979	Support, oil gauge tube	1	22
				S-631	Washer (9/32")	1	24

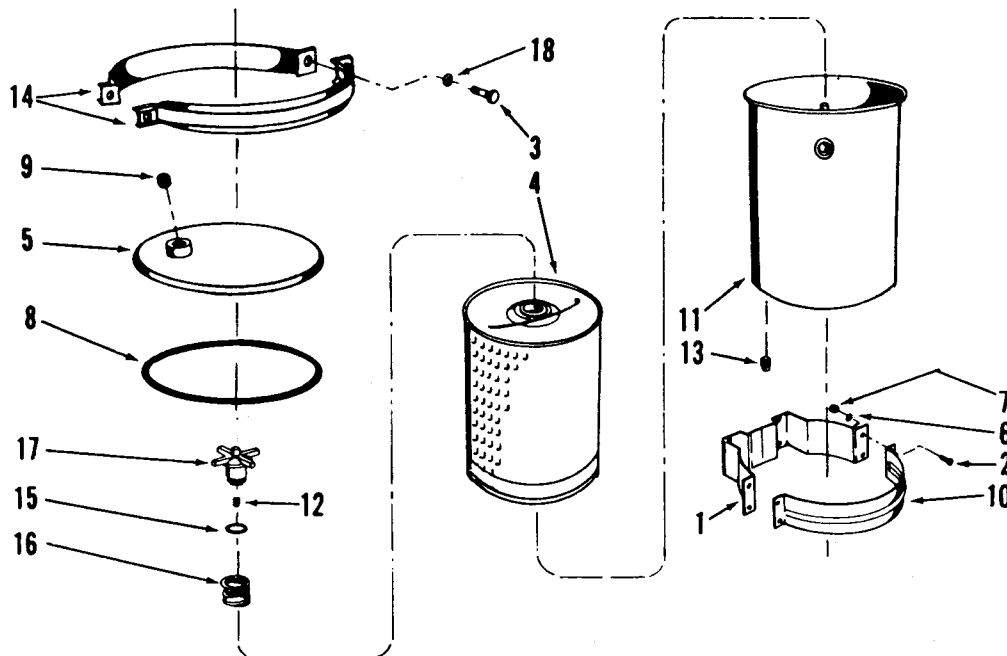
PARTS INDENTED ARE INCLUDED IN THE PART UNDER WHICH THEY ARE INDENTED



ENGINE APPLICATION	AUTOMOTIVE	X	B-OFF-HIGHWAY	C-CONSTRUCTION & INDUSTRIAL	X	P-INDUSTRIAL POWER	X
--------------------	------------	---	---------------	-----------------------------	---	--------------------	---

PART NUMBER	PART NAME	NO. REQ'D	REF. NO.	PART NUMBER	PART NAME	NO. REQ'D	REF. NO.
<b>LUBRICATING OIL FILTER</b>				<b>MOUNTING PARTS</b>			
AR-60253	Filter, lubricating oil	1		108707	Capscrew (3/8" - 16 x 1½")	5	20
173174	Cartridge	1	1	S-126	Capscrew (3/8" - 16 x 2½")	2	21
555378	Shell assembly, filter	1		176924	Gasket	1	22
556507	Bolt, centre	1	2	S-604	Lockwasher (3/8")	7	23
551681	Can, filter	1	3				
556506	Circlip	1	4				
554378	Gasket, bolt	1	5				
554374	Plate	1	6				
554375	Retainer, seal ring	1	7				
551685	Seal, bolt	1	8				
554377	Spacer	1	9				
551683	Spring, cartridge	1	10				
554376	Support, cartridge	1	11				
551684	Washer, bolt seal	1	12				
200819	Disc, by-pass	1	13				
175623	Head, filter	1	14				
S-908	Plug, pipe (3/8")	1	15				
193302	Ring, sealing, head	1	16				
156676	Ring, snap disc	1	17				
188476	Spring, by-pass	1	18				
S-689	Washer, disc (19/32")	1	19				

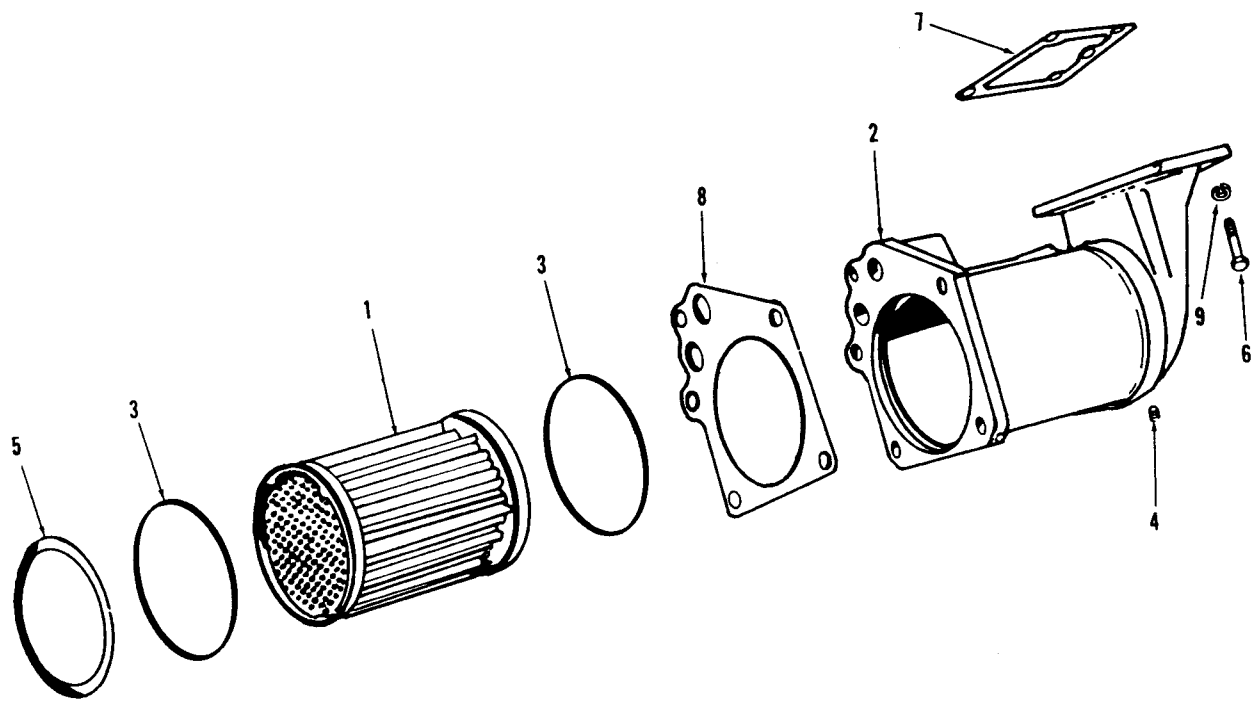
PARTS INDENTED ARE INCLUDED IN THE PART UNDER WHICH THEY ARE INDENTED



ENGINE APPLICATION    AUTOMOTIVE    B-OFF-HIGHWAY    C-CONSTRUCTION & INDUSTRIAL    X    P-INDUSTRIAL POWER

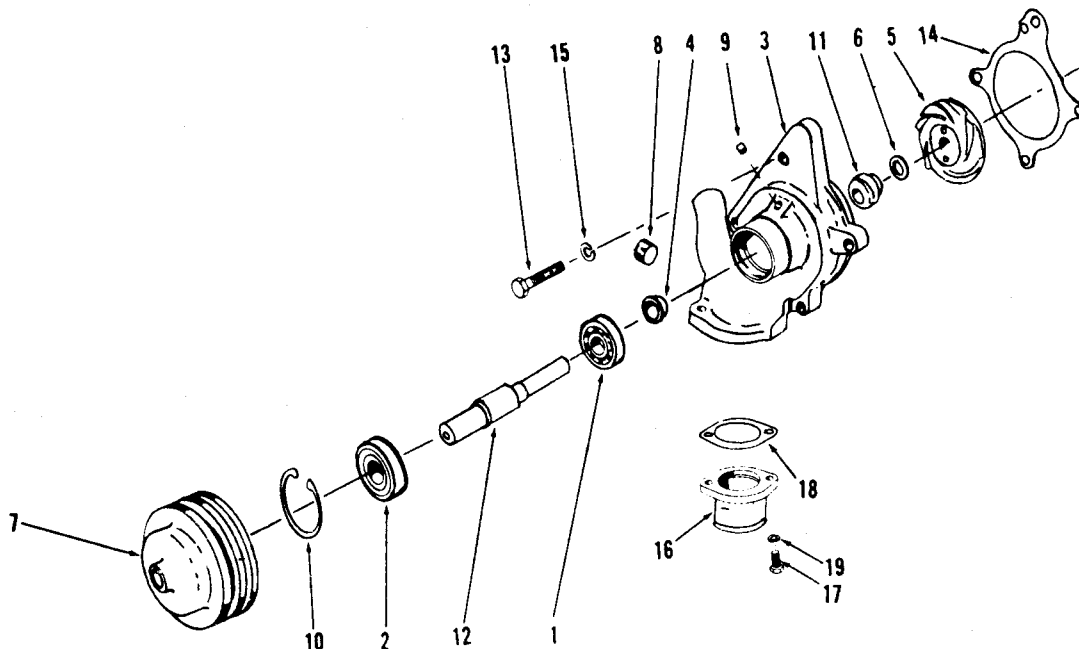
PART NUMBER	PART NAME	NO. REQ'D	REF. NO.	PART NUMBER	PART NAME	NO. REQ'D	REF. NO.
<b>LUBRICATING OIL BY-PASS FILTER (C ONLY)</b>							
159707	Assembly, lubricating oil by-pass filter (500)	1					
145664	Bracket, filter	2	1				
70188	Capscrew, bracket	8	2				
70223	Capscrew (5/16" - 18 x 1 1/4")	2	3				
256839	Cartridge	1	4				
159667	Cover	1	5				
70189	Lockwasher, bracket	8	6				
70299	Nut, mounting bracket	8	7				
164159	"O" ring, cover	1	8				
S-908	Plug, cover (3/8")	1	9				
145665	Strap, mounting	2	10				
252056	Shell, filter	1	11				
157151	Decal, filter	1					
131911	Orifice, plug (No. 6)	1	12				
S-908	Plug, drain (3/8")	1	13				
150038	Coupling, half, with nuts	1	14				
150039	Coupling half	1	14				
70194	Lockwasher, coupling half	2	18				
252138	Support, upper	1					
116029	"O" ring, support	1	15				
150037	Spring, hold down	1	16				
252055	Support, upper	1	17				

PARTS INDENTED ARE INCLUDED IN THE PART UNDER WHICH THEY ARE INDENTED



ENGINE APPLICATION		AUTOMOTIVE		B-OFF-HIGHWAY		C-CONSTRUCTION & INDUSTRIAL		P-INDUSTRIAL POWER	
PART NUMBER		PART NAME		NO. REQ'D	REF. NO.	PART NUMBER		PART NAME	
		<b>LUBRICATING OIL COOLER</b>							
BM-91604	Cooler, lubricating oil	1							
110848	Element	1	1						
166401	Housing	1	2						
148293	"O" ring	2	3						
553364	Plug, pipe	1	4						
110827	Retainer, element	1	5						
		<b>MOUNTING PARTS</b>							
S-103-D	Capscrew, mounting	9	6						
165153	Gasket, housing to block	1	7						
166407	Gasket, cooler to filter	1	8						
S-604	Lockwasher (3/8")	9	9						

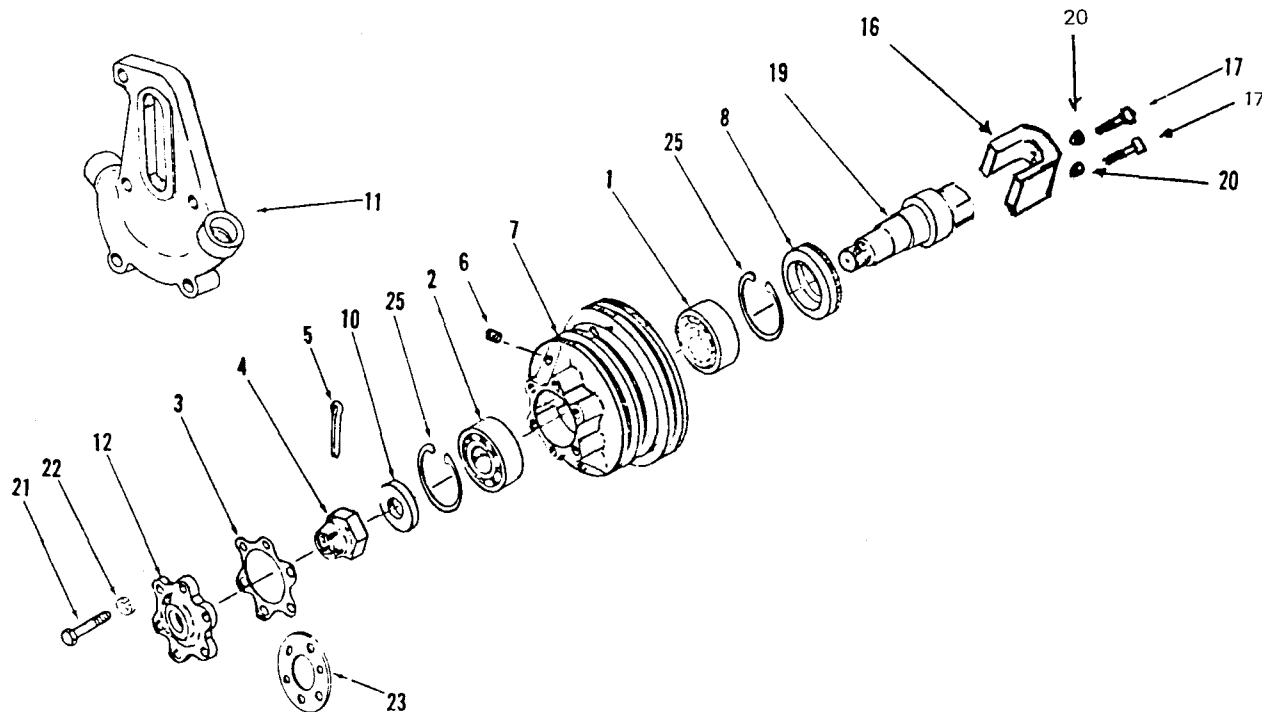
PARTS INDENTED ARE INCLUDED IN THE PART UNDER WHICH THEY ARE INDENTED



ENGINE APPLICATION AUTOMOTIVE X B-OFF-HIGHWAY C-CONSTRUCTION & INDUSTRIAL X P-INDUSTRIAL POWER X

PART NUMBER	PART NAME	NO. REQ'D	REF. NO.	PART NUMBER	PART NAME	NO. REQ'D	REF. NO.
<b>WATER PUMP</b>				<b>WATER PUMP REPAIR KIT</b>			
AR-61788	Pump, water	1		AR-62494	Kit, water pump repair	1	
177596	Bearing, ball	1	1	552335	Bearing, ball	1	2
552335	Bearing, ball	1	2	177596	Bearing, ball	1	1
555260	Body, water pump	1	3	554438	Impeller, water	1	5
107776	Flinger, water pump	1	4	214173	Seal, water pump	1	11
554438	Impeller, water pump	1	5	200509	Seal, water pump	1	6
200509	Seal, seat	1	6	169042	Gasket, water pump	1	14
553093	Pulley, water pump	1	7	107776	Flinger, water pump	1	4
S-995	Plug, pipe (3/4")	1	8				
S-915-A	Plug, pipe	1					
S-911-B	Plug, pipe (1/8")	1	9				
160586	Ring, retaining	1	10				
214173	Seal, water pump	1	11	68270	Connection, water	1	16
553090	Shaft, water pump	1	12	S-112	Capscrew, connection	2	17
				9221	Gasket, connection	1	18
				S-604	Lockwasher (3/8")	2	19
<b>MOUNTING PARTS</b>				<b>WATER INLET CONNECTION</b>			
108707	Capscrew, water pump to block (3/8" - 16 x 1 1/2")	4	13				
163042	Gasket, water pump to block	1	14				
S-604	Lockwasher (3/8")	4	15				

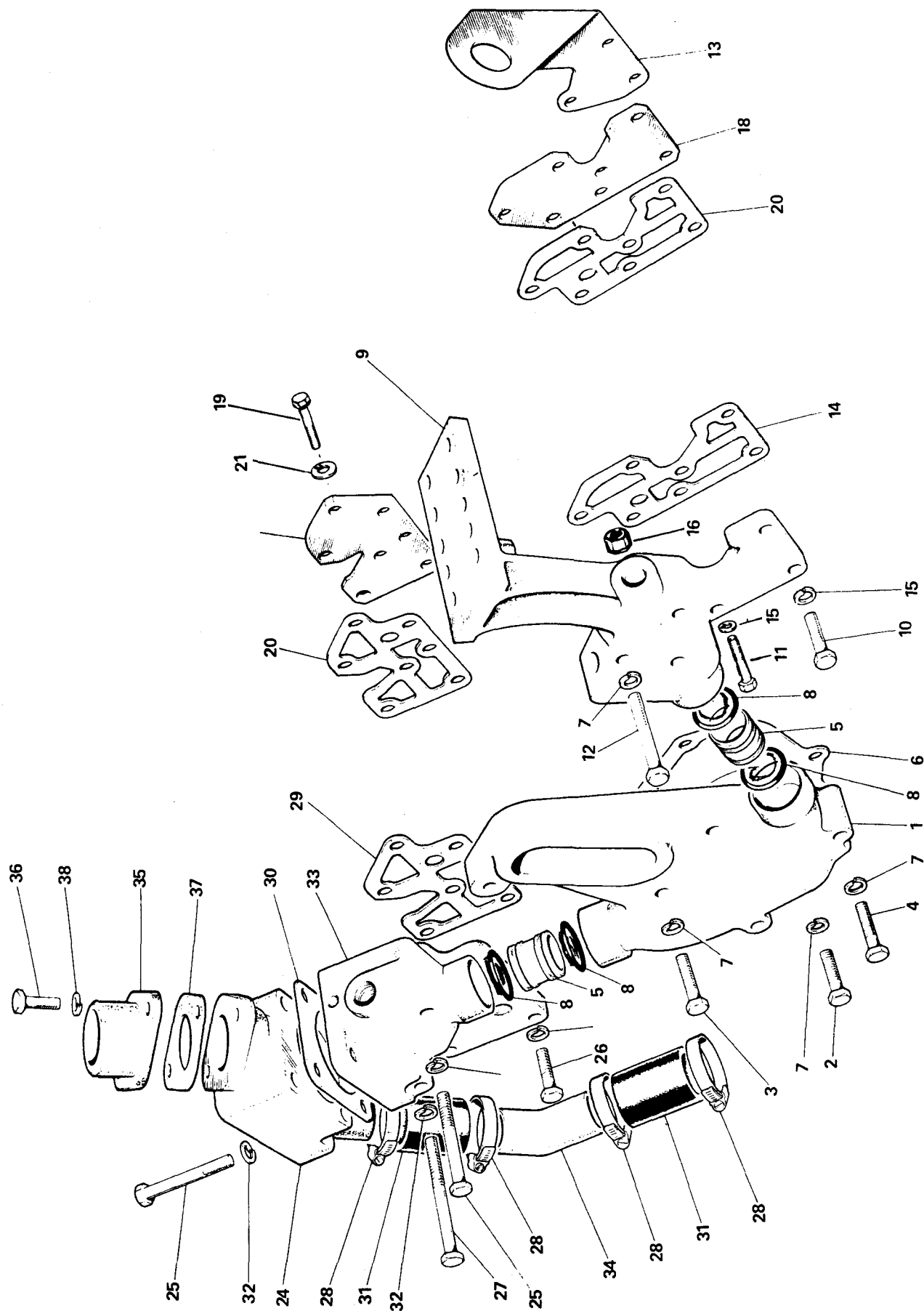
PARTS INDENTED ARE INCLUDED IN THE PART UNDER WHICH THEY ARE INDENTED



ENGINE APPLICATION	AUTOMOTIVE X	B-OFF-HIGHWAY	C-CONSTRUCTION & INDUSTRIAL X	P-INDUSTRIAL POWER X
--------------------	--------------	---------------	-------------------------------	----------------------

PART NUMBER	PART NAME	NO. REQ'D	REF. NO.	PART NUMBER	PART NAME	NO. REQ'D	REF. NO.
<b>HIGH FAN MOUNT</b>							
AR-62215	Hub, fan	1					
553712	Bearing, tapered roller	1	1				
553713	Bearing, tapered roller	1	2				
556457	Gasket	1	3				
553817	Locknut, slotted hex.	1	4				
S-507	Pin, cotter	1	5				
555932	Pulley, fan hub	1	7				
69901	Plug, hex	2	6				
553714	Retainer, fan hub	2	25				
200307	Seal, oil	1	8				
554214	Shaft, fan hub	1	19				
551496	Washer, clamp	1	10				
153411	Washer, clamp	2	20				
556493	Cover, cam/bracket, fan/crossover water	1	11				
556452	Pilot, fan	1	12				
182707	Clamp, fan hub	1	16				
554316	Capscrew	2	17				
<b>MOUNTING PARTS</b>							
178685	Belt	2					
S-199-A	Capscrew, fan mounting (P)	6	21				
S-604	Lock washer (3/8")	6	22				
119211	Spacer, fan (P)	1	23				
S-120	Capscrew fan mounting (Auto & C)	6	21				

PARTS INDENTED ARE INCLUDED IN THE PART UNDER WHICH THEY ARE INDENTED

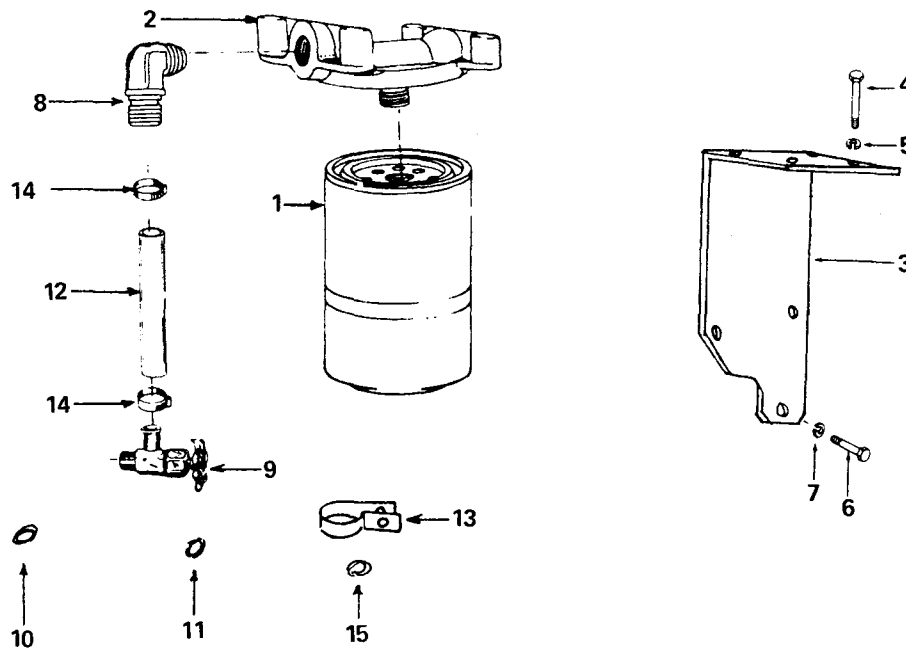


19  
THERMOSTAT HOUSING AND WATER CONNECTIONS

ENGINE APPLICATION		AUTOMOTIVE X		B-OFF-HIGHWAY		C-CONSTRUCTION & INDUSTRIAL X		P-INDUSTRIAL POWER X	
PART NUMBER	PART NAME	NO. REQ'D	REF. NO.	PART NUMBER	PART NAME	NO. REQ'D	REF. NO.		
WATER CROSSOVER				THERMOSTAT HOUSING					
556493	Crossover, water, (cam cover)	1	1	555256	Housing, thermostat	1	24		
108707	Capscrew, cover to block	2	2	S-163	Capscrew, (3/8" - 16 x 3/4")	5	25		
S-103-D	Capscrew, cover to block (3/8" - 16 x 1 1/4")	2	3	S-103-D	Capscrew (3/8" - 16 x 1 1/4")	5	26		
S-104	Capscrew, cover to block (3/8" - 16 x 2 1/4")	2	4	S-199-A	Capscrew (3/8" - 16 x 4")	1	27		
555195	Connection, water transfer	2	5	550547	Clamp, hose	4	28		
550164	Gasket, cover	1	6	157290	Gasket, thermostat support	1	29		
S-604	Lockwasher, cover to block (3/8")	6	7	553916	Gasket, housing to support	1	30		
555198	"O" ring, sealing	4	8	553414	Hose	2	31		
182706	Screw, fan adjusting	1		S-604	Lockwasher (3/8")	11	32		
S-911-B	Plug pipe	1		S-908	Plug, pipe (3/8"NPTF)	3			
650864	Bracket, lifting (IP)	1		S-915-A	Plug, pipe (1/8" NPTF)	1			
S-103-D	Capscrew (IP)	3		186780	Seal	1			
S-109	Capscrew (IP)	4		555199	Support, thermostat housing	1	33		
				135675	Thermostat	1			
				553457	Tube, water by-pass	1	34		
				108707	Capscrew	4			
				69901	Plug, hex	2			
LEFT BANK FRONT				CONNECTION WATER OUTLET					
555189	Cover, cyl. head alt. support	1	9						
168919	Bracket, engine lifting (Auto & IP Applications)	1	13	555348	Connection, water outlet (auto and CI)	1	35		
S-103-D	Capscrew, cover lifting bracket (Auto)	1	10	S-112	Capscrew (3/8" - 16 x 1")	2	36		
108707	Capscrew (Auto)	3	11	9221	Gasket	1	37		
S-126	Capscrew, cover to cylinder head	3	12	S-604	Lockwasher (3/8")	2	38		
157290	Gasket, cylinder head cover	1	14	68270	Connection Water outlet (IP)	1	35		
S-604	Lockwasher (3/8")	7	15						
S-915-A	Plug, pipe (1/2")	2	16						
S-962-E	Drain tap	1							
554500	Plate, alternator steadying	1							
555702	Bolt, shouldered	1							
550830	Bushing, rubber	2							
S-670	Washer	1							
556045	Spacer alt. support	1							
RIGHT BANK REAR									
152398	Plate, cylinder head cover (CI & IP Applications)	1	18						
553513	Plate, cylinder head cover (Auto)	1	18						
168919	Bracket, engine lifting (Auto & CI Applications)	1	13						
S-109	Capscrew (3/8" - 16 x 7/8")	4	19						
S-112	Capscrew (3/8" - 16 x 1") (Auto)	3	19						
157290	Gasket	1	20						
S-604	Lockwasher (3/8")	7	21						
S-1005-A	Elbow (Auto)	1							
LEFT BANK REAR									
152398	Plate, cylinder head cover	1	22						
S-109	Capscrew (3/8" - 16 x 7/8") (Auto & CI Applications)	7	19						
157290	Gasket	1	20						
S-604	Lockwasher (3/8")	7	21						
650864	Bracket lifting (IP)	1							
S-103-D	Capscrew (IP)	3	19						
S-109	Capscrew (IP)	4	19						

PARTS INDENTED ARE INCLUDED IN THE PART UNDER WHICH THEY ARE INDENTED



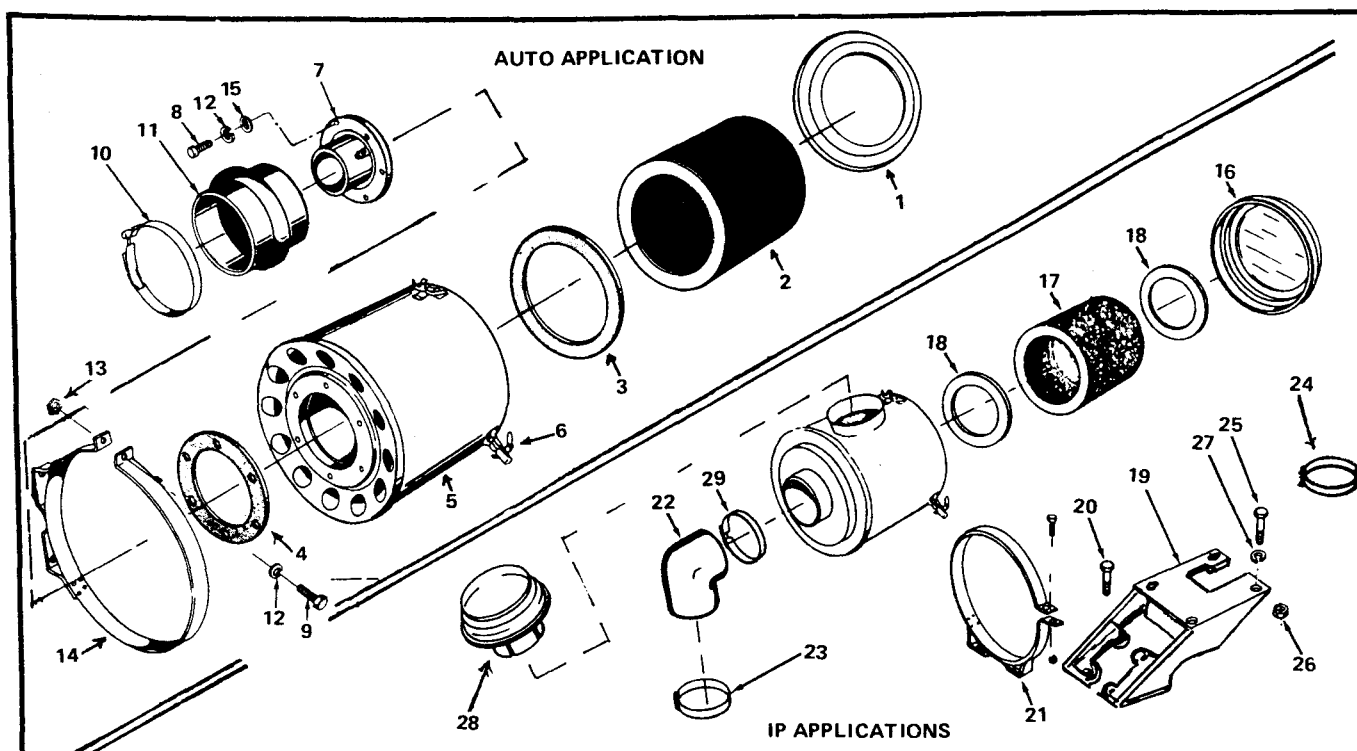


ENGINE APPLICATION    AUTOMOTIVE    X    B-OFF-HIGHWAY    C-CONSTRUCTION & INDUSTRIAL    X    P-INDUSTRIAL POWER    X

PART NUMBER	PART NAME	NO. REQ'D	REF. NO.	PART NUMBER	PART NAME	NO. REQ'D	REF. NO.
<b>CORROSION RESISTOR</b>							
<b>(SPIN ON TYPE)</b>							
209606	Resistor, corrosion	1					
209604	Element, spin on	1	1				
204163	Head	1	2				
<b>MOUNTING PARTS</b>							
556561	Bracket	1	3				
S-103-D	Capscrew (3/8" -16 x 1 1/4")	4	4				
S-604	Lockwasher (3/8")	4	5				
S-119	Capscrew (5/16" - 18 x 5/8")	3	6				
S-605	Lockwasher (5/16")	3	7				
179903	Connector	2	8				
179901	Valve water shut off	2	9				
62087	Spacer instrument panel	2	10				
68368-A	Spacer L.O. filter	1	11				
179914	Hose, to thermo. housing support	1	12				
179913	Hose, thermo hsg. to resistor	1	12				
550692	Clip	2	13				
S-103-D	Capscrew	1					
S-604	Lockwasher	1					
179904	Hose clamp	4	14				
68368-B	Spacer	1	15				

PARTS INDENTED ARE INCLUDED IN THE PART UNDER WHICH THEY ARE INDENTED



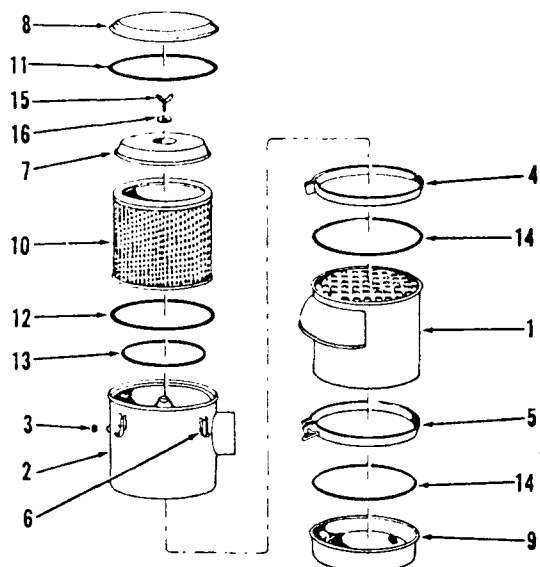


ENGINE APPLICATION	AUTOMOTIVE	<input checked="" type="checkbox"/> B-OFF-HIGHWAY	C-CONSTRUCTION & INDUSTRIAL	P-INDUSTRIAL POWER	<input checked="" type="checkbox"/>
--------------------	------------	---	-----------------------------	--------------------	-------------------------------------

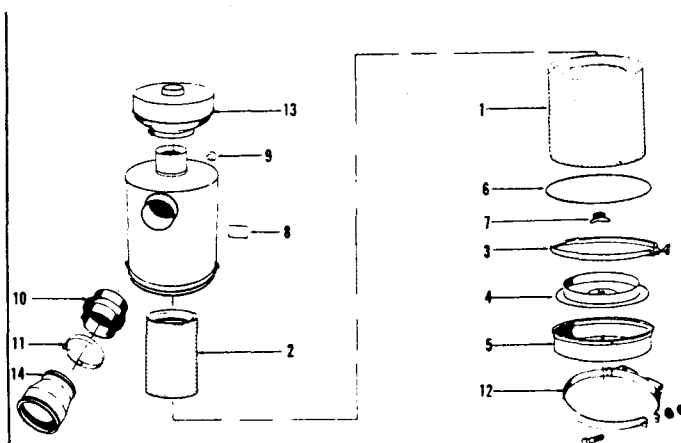
PART NUMBER	PART NAME	NO. REQ'D	REF. NO.	PART NUMBER	PART NAME	NO. REQ'D	REF. NO.
	<b>AIR CLEANER</b>				<b>AIR CLEANER</b>		
	<b>Optional</b>				<b>Optional</b>		
	<b>Auto Application</b>				<b>IP Applications</b>		
106835	Cleaner, air	1		650051	Cleaner, air	1	
107125	Cover	1	1	650056	Cover	1	16
AF-252	Element	1	2	650055	Element	1	17
107126	Gasket, element	1	3	650058	Seal	2	18
107127	Gasket, flange	1	4				
107128	Shell	1	5				
122121	Spring, cover clamp	3	6				
	<b>MOUNTING PARTS</b>				<b>MOUNTING PARTS</b>		
106124	Adapter, air cleaner	1	7	650667	Air cleaner bracket	1	19
S-115	Capscrew (5/16" - 18 x 7/8")	6	8	108707	Capscrew (1" - 1/2" x 3/8")	4	20
S-119	Capscrew (5/16" - 18 x 1 1/4")	4	9	650041	Strap air cleaner	2	21
140311	Clamp, hose	4	10	650356	Elbow	1	22
103806	Hose, air cleaner	2	11	125740	Tee bolt hose clamp (4 1/2" Dia.)	1	23
S-605	Lockwasher (5/16")	10	12	140311	Hose clamp (4, 1/8" Dia.)	1	24
S-221	Nut (5/16")	4	13	S-166	Capscrew	4	25
107091	Strap	2	14	S-205	Nut	4	26
S-626	Washer (11/32")	6	15	S-604	Lockwasher (3/8")	4	27
				650059	Stack cap	1	28
				140312	T-Bolt clamp (4, 5/8" Dia.)	1	29

PARTS INDENTED ARE INCLUDED IN THE PART UNDER WHICH THEY ARE INDENTED

# Optional

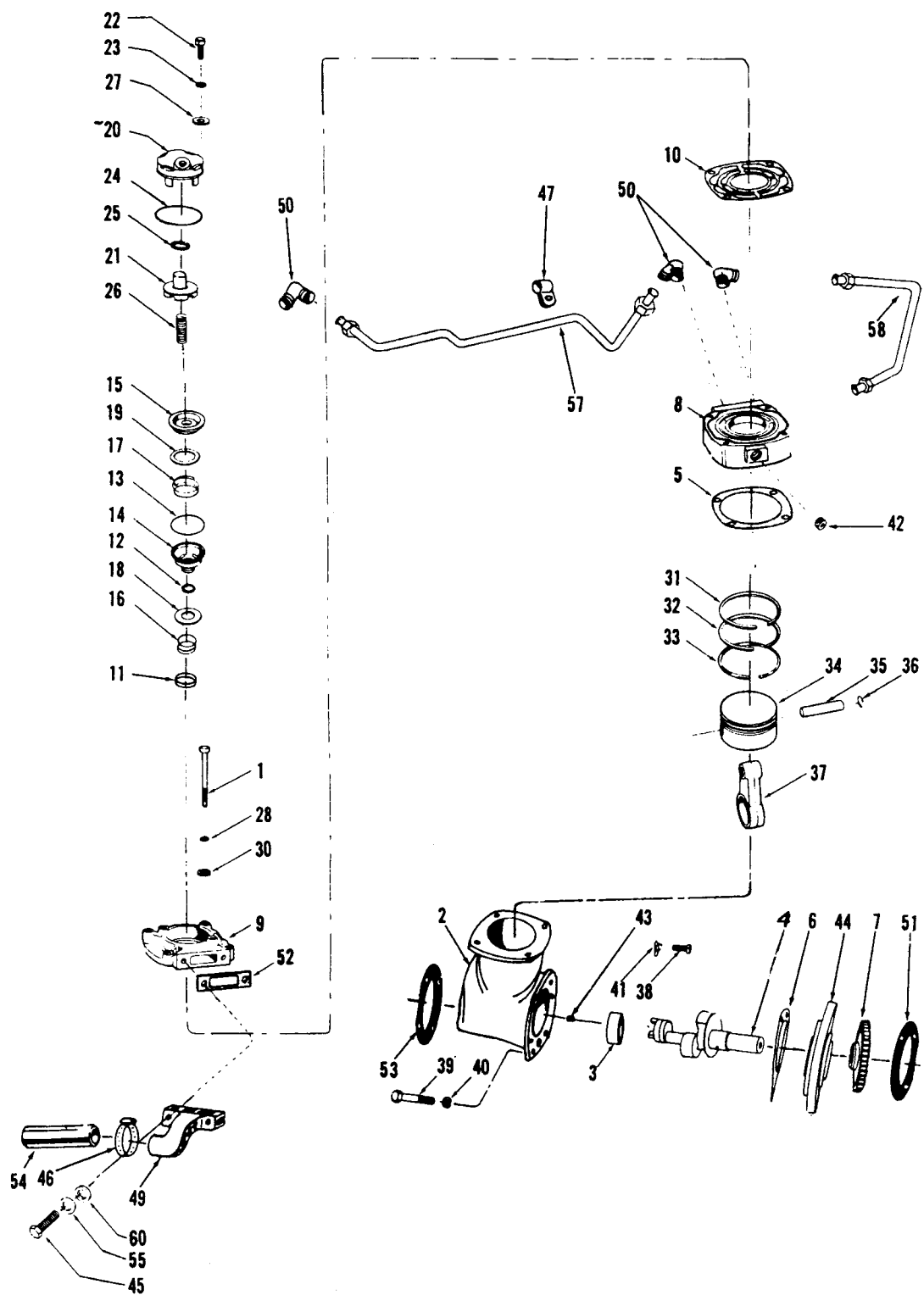


# Standard



ENGINE APPLICATION				C-CONSTRUCTION & INDUSTRIAL			
AUTOMOTIVE				X P-INDUSTRIAL POWER			
PART NUMBER	PART NAME	NO. REQ'D	REF. NO.	PART NUMBER	PART NAME	NO. REQ'D	REF. NO.
<b>AIR CLEANER</b>				<b>AIR CLEANER</b>			
<b>Optional</b>				<b>Standard</b>			
<b>C Application</b>				<b>C Application</b>			
151606	Cleaner, air	1		204623	Cleaner, air	1	
151798	Body, lower	1	1	196677	Element, primary	1	1
150781	Body, upper	1	2	204624	Element, safety	1	2
150768	Cap, restriction	1	3	204625	Clamp assembly	1	3
133743	Clamp, body	1	4	158886	Baffle assembly	1	4
133743	Clamp, cup	1	5	158890	Cup assembly	1	5
150767	Clip, cover	1	6	204626	"O" ring	1	6
150779	Cover, inner	1	7	204627	Nut	1	7
133737	Cover	1	8	204628	Marking	1	8
133745	Cup	1	9	150768	Cap	1	9
150778	Element	1	10				
150775	Gasket, cover	1	11				
150780	Gasket, inner cover	1	12				
150782	Gasket, element	1	13				
133742	Gasket, body and cup	2	14	149357	Reducer, rubber	1	10
152792	Screw	1	15	149437	Clamp, hose	1	11
152793	Washer	1	16	650062	Strap	2	12
				650059	Stack cap	1	13
				108799	Adapter	1	14
				125739	Tee bolt hose clamp	1	11
				125740	Tee bolt hose clamp	2	11
<b>MOUNTING PARTS</b>				<b>MOUNTING PARTS</b>			
S-111	Capscrew (5/16" - 18 x 1 1/2")	4					
140311	Clamp, hose	3					
125740	Clamp, hose	1					
103806	Hose	1					
S-605	Lockwasher (5/16")	4					
S-221	Nut	4					
108799	Reducer, rubber	1					
106220	Strap	2					

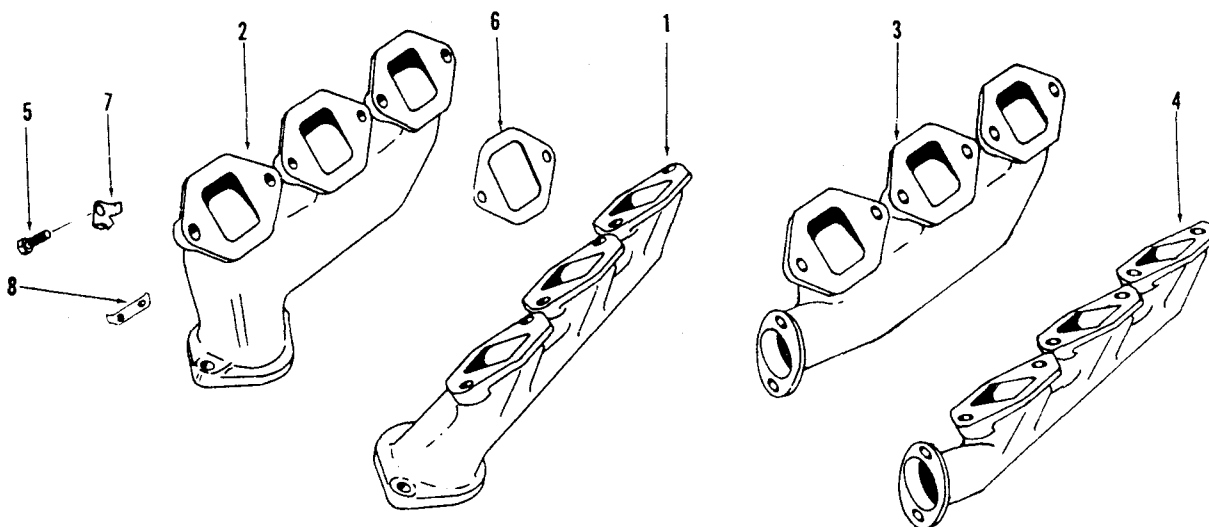
PARTS INDENTED ARE INCLUDED IN THE PART UNDER WHICH THEY ARE INDENTED



CUMMINS COMPACT AIR COMPRESSOR

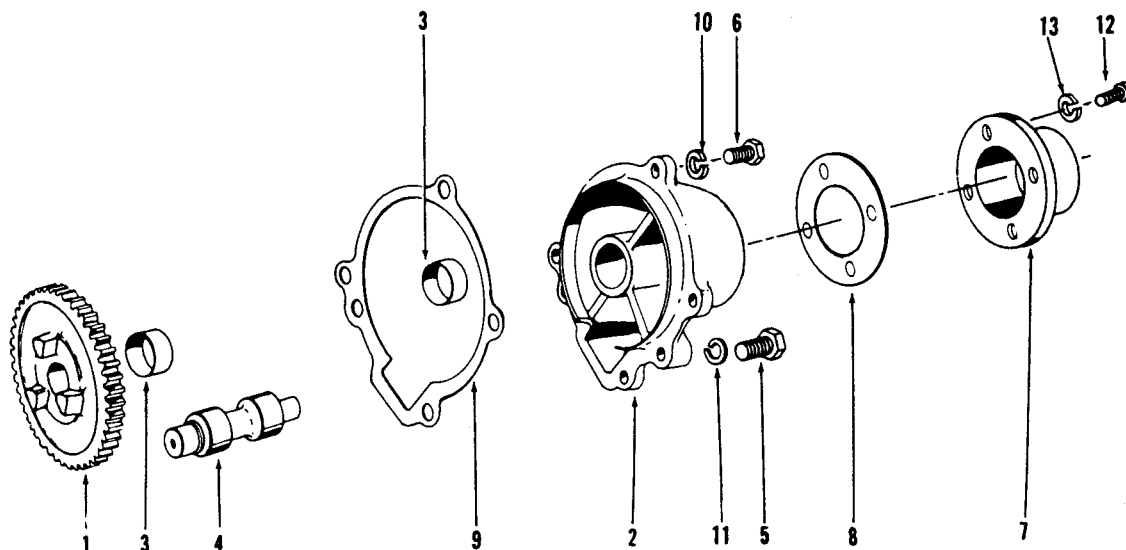
ENGINE APPLICATION		AUTOMOTIVE		B-OFF-HIGHWAY		C-CONSTRUCTION & INDUSTRIAL		P-INDUSTRIAL POWER	
PART NUMBER	PART NAME	NO. REQ'D	REF. NO.	PART NUMBER	PART NAME	NO. REQ'D	REF. NO.		
	AIR COMPRESSOR				MOUNTING PARTS				
AR-73658	Compressor, air	1		S-111	Capscrew, air connection	2	45		
S-155-A	Capscrew, head to crankcase	4	1	550788	Clamp, hose	2	46		
BM-98685	Crank case, compressor (176025)	1	2	176038	Connection, air	1	49		
147610	Bushing, crank shaft	1	3	S-1005-A	Elbow, flexible hose	3	50		
202780	Crank shaft, compressor	1	4	167993	Gasket, support	1	51		
154018	Gasket, head to crankcase	1	5	157911	Gasket, air connection	1	52		
176027	Gasket, support	1	6	200817	Gasket, fuel pump to compressor	1	53		
554645	Gear, compressor drive	1	7	179124	Hose	1	54		
AR-73074	Head assembly	1		S-605	Lockwasher (5/16")	2	55		
179122	Head, air compressor	1	8	553512	Tube, water inlet	1	57		
153964	Cover, air compressor head	1	9	S-1002-A	Connection, straight	1			
154996	Gasket	1	10	S-1004-A	Nut	2			
183429	Wearplate	1	11	S-1003-A	Sleeve	2			
AR-73075	Intake and exhaust valve assy.	1		553514	Tube, water outlet	1	58		
128085	"O" ring	1	12	S-1005-A	Elbow	1			
128086	"O" ring	1	13	S-1004-A	Nut	2			
144714	Seat, exhaust valve	1	14	S-1003-A	Sleeve	2			
145028	Seat, intake valve	1	15	S-626	Washer, plain (11/32")	2	60		
128080	Spring, exhaust valve	1	16	554124	Bracket Fuel pump to compressor	1			
190334	Spring, intake valve	1	17	S-107	Capscrew	2			
127940	Valve, exhaust	1	18	S-605	Lockwasher	2			
144948	Valve, intake	1	19	69047-A	Capscrew	1			
AR-73076	Unloading valve assembly	1		S-604	Washer	1			
153966	Body, unloader valve	1	20	S-626	Washer	4			
191037	Cap, unloader	1	21						
S-107	Capscrew (5/16" - 18 x 3/4")	2	22						
S-605	Lockwasher (5/16")	2	23						
128086	"O" ring	1	24						
127936	Seal, plunger	1	25						
150631	Spring, unloader valve	1	26						
109557	Washer (11/32")	2	27						
S-605	Lockwasher, head to crank case	4	28						
105375	Nameplate, serial number	1							
S-2267	Screw, nameplate	2							
S-626	Washer, plain	4	30						
AR-73350	Ring set, compression (Std) (Darlington Serv)	1							
650330	Ring	1	31						
187350	Ring, compression	1	32						
180810	Ring, oil	1	33						
BM-77410	Piston assembly (Std)	1							
165430	Piston, air compressor	1	34						
119810	Pin, piston	1	35						
119859	Ring, snap	2	36						
176023	Rod, connecting	1	37						
S-112	Capscrew (3/8" - 16 x 1")	4	38						
S-103-D	Capscrew (3/8" - 16 x 1 1/4")	2	39						
S-604	Lockwasher (3/8")	2	40						
550720	Lockplate	4	41						
S-915-A	Plug, pipe (1/2")	1	42						
S-965-E	Plug, pipe (1/16")	1	43						
650187	Support	1	44						
650792	Plug, pipe (crankshaft)	1							

PARTS INDENTED ARE INCLUDED IN THE PART UNDER WHICH THEY ARE INDENTED



ENGINE APPLICATION		AUTOMOTIVE		B-OFF-HIGHWAY		C-CONSTRUCTION & INDUSTRIAL		P-INDUSTRIAL POWER	
			X				X		X
PART NUMBER	PART NAME	NO. REQ'D	REF. NO.	PART NUMBER	PART NAME	NO. REQ'D	REF. NO.		
	<b>EXHAUST MANIFOLD</b>				<b>MOUNTING PARTS</b>				
168001	Manifold, exhaust L.B. (Auto)	1	1	S-103-D	Capscrew, manifold (3/8" - 16 x 1 1/4")	12	5		
550336	Manifold, exhaust R.B. (Auto)	1	2		Gasket, manifold	6	6		
171629	Manifold, exhaust L.B. (C & IP)	1	3	168003	Lockplate	4	7		
171628	Manifold, exhaust R.B. (C & IP)	1	4	554731	Lockplate	4	8		
				551108	Spacer	12	9		
				68368-B	Exhaust flange (IP)	2			
				168005	Gasket, exhaust outlet (IP)	2			
				168004					

PARTS INDENTED ARE INCLUDED IN THE PART UNDER WHICH THEY ARE INDENTED

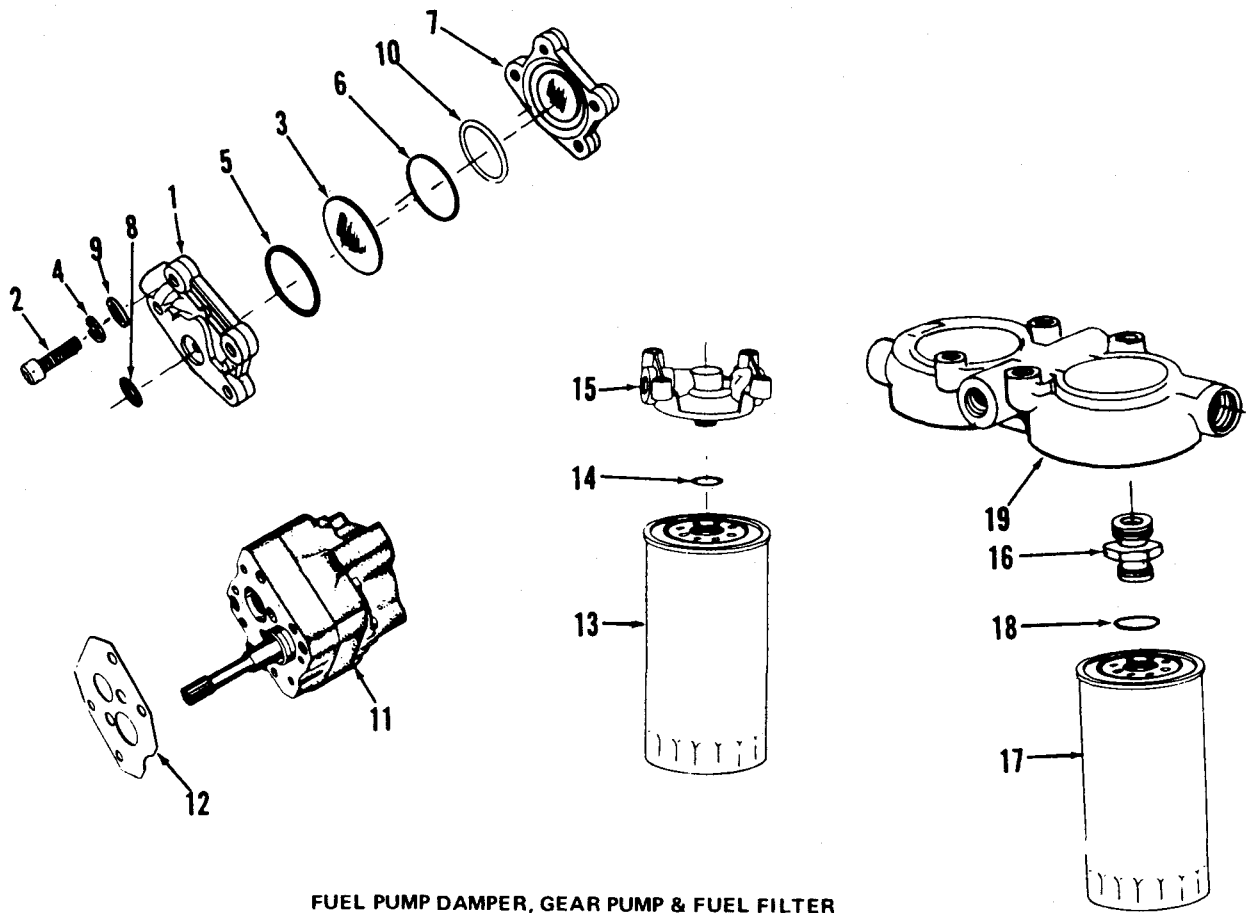


ENGINE APPLICATION	AUTOMOTIVE	B-OFF-HIGHWAY	C-CONSTRUCTION & INDUSTRIAL	P-INDUSTRIAL POWER
			X	X

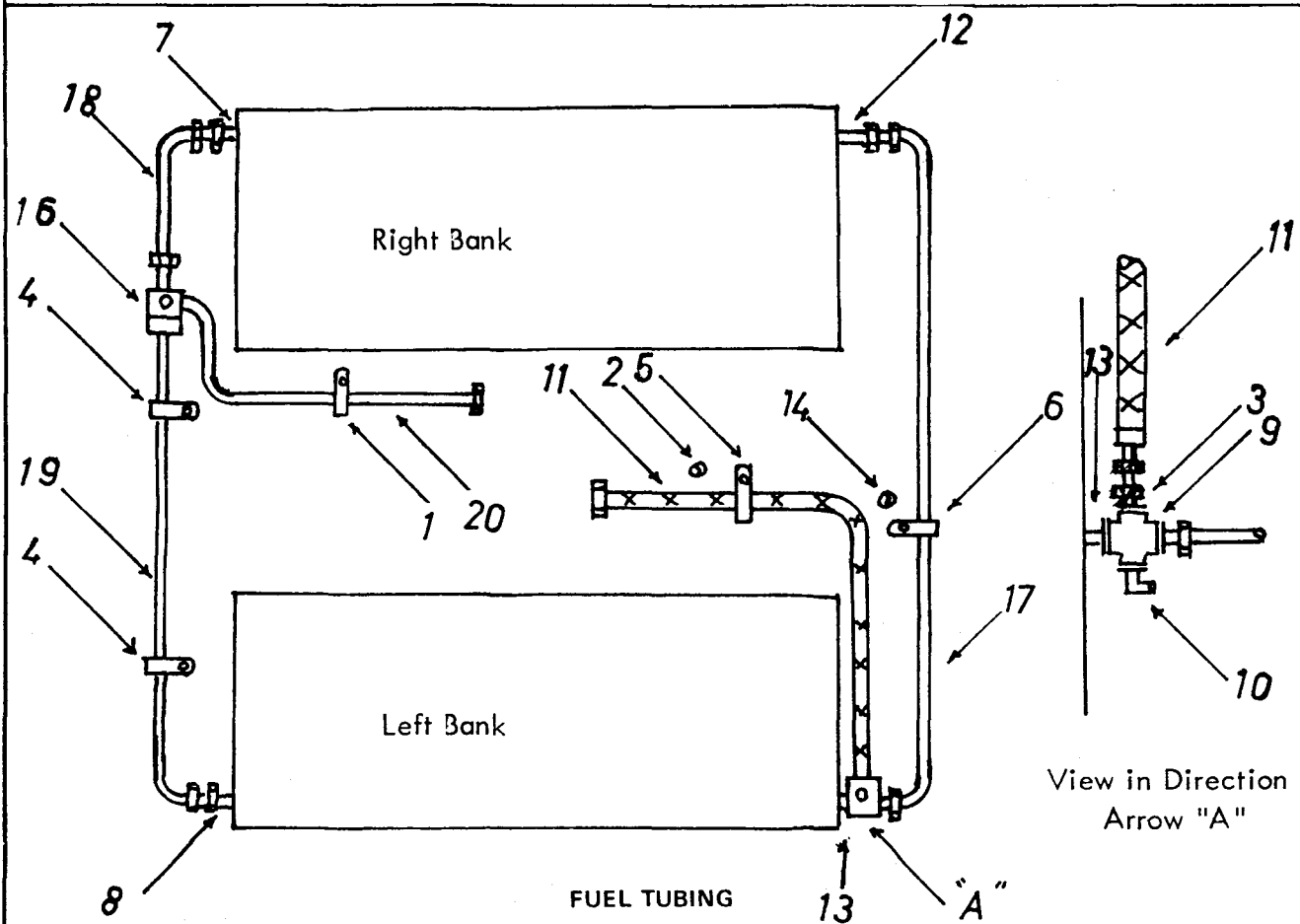
PART NUMBER	PART NAME	NO. REQ'D	REF. NO.	PART NUMBER	PART NAME	NO. REQ'D	REF. NO.
<b>FUEL PUMP DRIVE P APPLICATION</b>				<b>FUEL PUMP DRIVE C APPLICATION</b>			
BM-93760	Drive, fuel pump	1		AR61319	Cover, gear housing	1	
177097	Gear, drive	1	1	554002	Gear, housing cover	1	
BM-93759	Housing, drive (171635)	1	2	202840	Bushing, shaft	1	
147610	Bushing, shaft	2	3				
171636	Shaft, drive	1	4	AR61040	Access driveshaft	1	
				553024	Support F.P.	1	
<b>MOUNTING PARTS</b>				S-965-E	Plug, pipe	1	
				203391	Shaft, access drive	1	
S-105-A	Capscrew, drive (7/16" - 20 x 1 1/4")	2	5	554645	Gear	1	
S-105	Capscrew, drive (3/8" - 16 x 3 1/2")	2	6				
551160	Cover, drive shaft	1	7	153433	Gasket	1	
164059	Gasket, cover	1	8	S-163	Capscrew	4	
153433	Gasket, support	1	9	S-604	Washer spring-lock	4	
S-604	Lockwasher, drive (3/8")	2	10	S-602	Washer	4	
S-610	Lockwasher, drive (7/16")	2	11				
131449	Screw, cover	4	12				
S-607	Washer, cover	4	13				

PARTS INDENTED ARE INCLUDED IN THE PART UNDER WHICH THEY ARE INDENTED





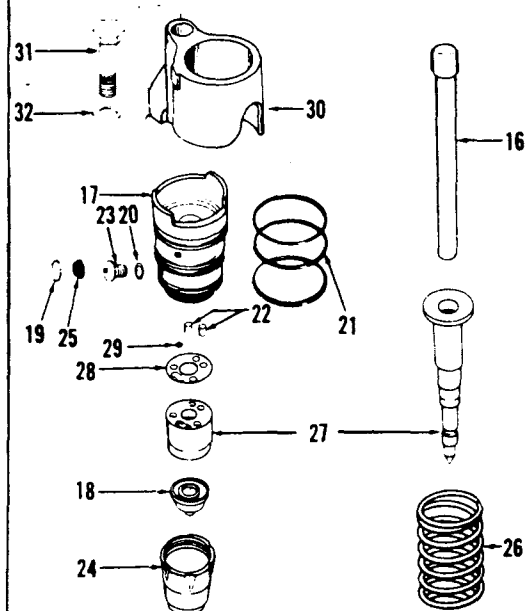
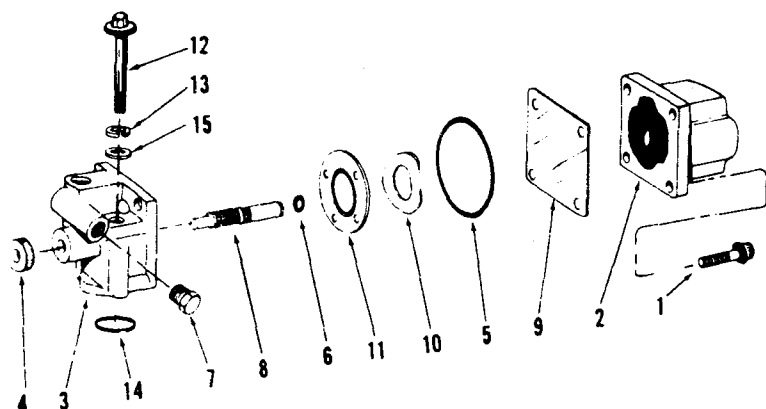
FUEL PUMP DAMPER, GEAR PUMP & FUEL FILTER



FUEL TUBING

ENGINE APPLICATION		AUTOMOTIVE		B-OFF-HIGHWAY		C-CONSTRUCTION & INDUSTRIAL		P-INDUSTRIAL POWER	
PART NUMBER	PART NAME	NO. REQ'D	REF. NO.	PART NUMBER	PART NAME	NO. REQ'D	REF. NO.		
<b>PT FUEL SYSTEM</b>				<b>C Application</b>					
Each Cummins PT Fuel Pump is calibrated to obtain the best performance and fuel economy for your engine. Your Cummins Distributor or Dealer has the special tools required for complete rebuild and calibration. <b>Caution:</b> Do not disturb the fuel pressure settings or the throttle screw settings, as serious damage to your engine may result.									
Only PT Fuel System parts which can be replaced without pump calibration are listed here. Your Cummins Distributor will record the specific part number of your complete PT Fuel Pump in the front of this catalogue.									
<b>FUEL PUMP DAMPER</b>				<b>MOUNTING FUEL FILTER</b>					
BM-76340	Damper, fuel pump	1		AS1003340SS	Hose, fuel filter	1			
153336	Body, damper	1	1	556480	Bracket	1			
171545	Capscrew (1/4" - 20 x 1 1/4")	2	2	S-120	Capscrew (3/8" - 16 x 2 1/2")	3			
202897	Diaphragm	1	3	S-604	Lockwasher (3/8")	7			
181466	Lockwasher (17/64")	2	4	S-103-D	Capscrew (3/8" - 16 x 1 1/4")	4			
139988	"O" ring	1	5	108478	Clip, hose	2			
100099	"O" ring	1	6	68368-B	Spacer	1			
153338	Plate, damper	1	7	<b>IP Application</b>					
151900	Seal	1	8	156171	Filter, fuel	1			
70704	Washer, (1/4")	2	9	FF-105-D	Cartridge (156172)	1	13		
160514	Washer, nylon	1	10	255622	Gasket, cover	1	14		
<b>GEAR PUMP</b>				142784	Head	1	15		
<b>Auto, C Application</b>				129866	Adaptor	2			
BM-96327	Pump, gear	1	11	<b>MOUNTING FUEL FILTER</b>					
210647	Gasket	1	12	555067	Bracket	1			
<b>IP Application</b>				103023	Capscrew	3			
AR-00936	Pump, gear	1	11	S-112	Capscrew	4			
210647	Gasket	1	12	S-604	Lockwasher	4			
<b>FUEL FILTER</b>				AS1003600SS	Hose	1			
<b>Auto Application</b>				69465-A	Clamp	1			
154711	Filter, fuel	1		S-610	Lockwasher (7/16")	3			
154709	Cartridge	1	13	<b>FUEL TUBING</b>					
255622	Gasket, cover	1	14	<b>Auto and CI Applications</b>					
142784	Head	1	15	551394	Clip, assembly	1	1		
129859	Elbow	2		114850	Spacer	1	2		
<b>MOUNTING FUEL FILTER</b>				550475	Adapter, cross piece to pump	1	3		
553663	Bracket	1		556539	Clip, assembly	2	4		
S-604	Lockwasher (3/8")	7		554013	Clip, assembly	1	5		
S-103-D	Capscrew (3/8" - 16 x 1 1/4")	4		555079	Clip, assembly	1	6		
AS1001640SS	Hose	1		S-1003-1	Connector (R.B.)	1	7		
				S-1003-1	Connector (L.B.)	1	8		
				554011	Cross-piece	1	9		
				43765-A	Elbow, drain L.B. rear	1	10		
				AS0402860SS	Hose, flex (Auto only)	1	11		
				AS0402560SS	Hose, flex (C only)	1	11		
				553057	Connector, male	1	12		
				69187	Nipple, male (1/4" NPTF x 1.1/16")	1	13		
				62087	Spacer, clip assembly	1	14		
				S-1006-1	"T" piece	1	16		
				554009	Tube, fuel	1	17		
				553308	Tube, fuel	1	18		
				556236	Tube, assembly	1	19		
				555142	Tube, fuel (Auto only)	1	20		
				554348	Tube, fuel (C only)	1	20		
				553474	Tube, fuel (IP only)	1	20		
				<b>FUEL TUBING - IP APPLICATION</b>					
				Same as Auto & CI Except:					
				<b>ADD</b>					
				S-910-B	Pipe, plug	1	3		
				<b>OMIT</b>					
				550475	Adapter	1	3		

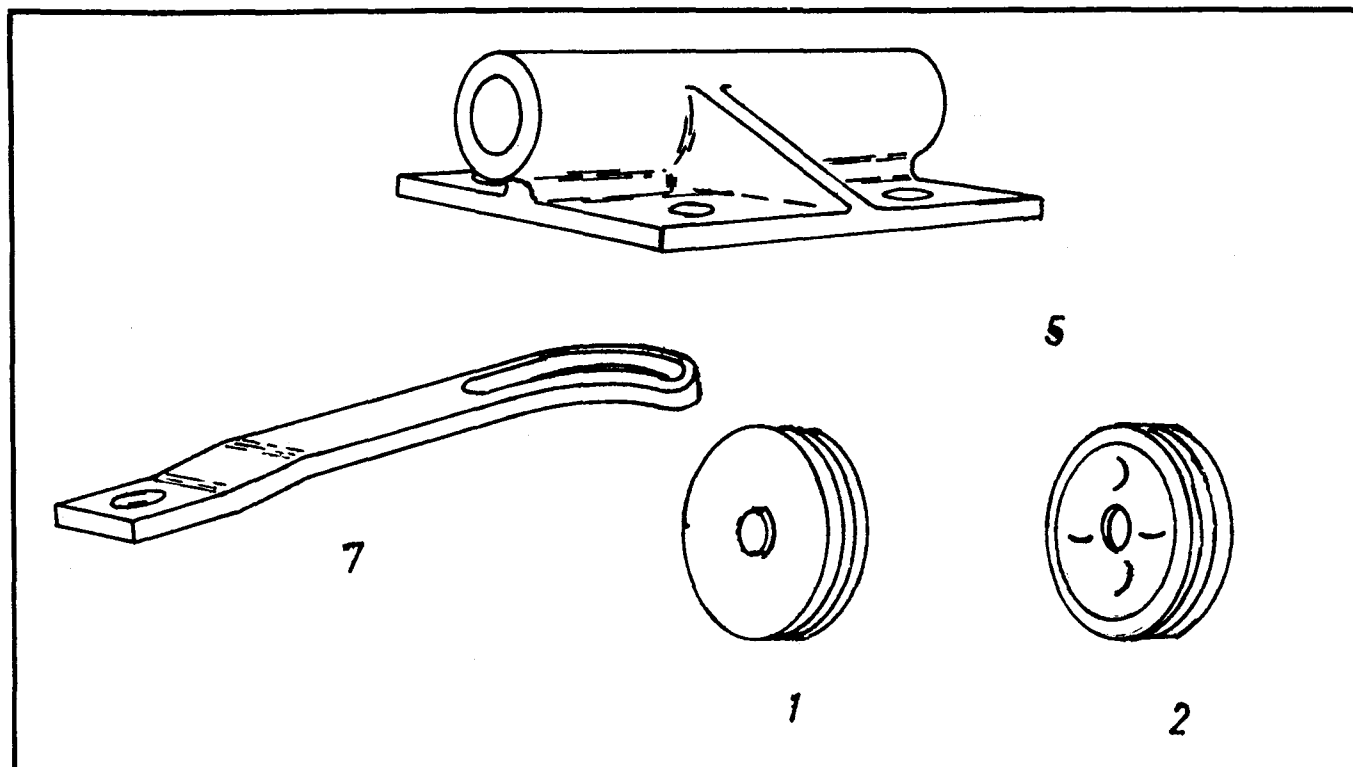
PARTS INDENTED ARE INCLUDED IN THE PART UNDER WHICH THEY ARE INDENTED



ENGINE APPLICATION AUTOMOTIVE ☒ B-OFF-HIGHWAY C-CONSTRUCTION & INDUSTRIAL ☒ P-INDUSTRIAL POWER ☒

PART NUMBER	PART NAME	NO. REQ'D	REF. NO.	PART NUMBER	PART NAME	NO. REQ'D	REF. NO.
<b>SHUTDOWN VALVE</b>				<b>INJECTOR</b>			
BM-69973	Valve, shutdown (12V, 1 pole)	1		AR-73626	Injector PT (Type D)	6	
S-1214	Capscrew, coil to housing	4	1	194041	Link, injector (1/2")	6	16
134072	Coil assembly	1	2	178088	Adapter, injector	6	17
129826	Housing, valve	1	3	651121	Cup, injector (7 x .0055 x 5 deg)	6	18
129838	Knob, manual override	1	4	174299	Clip, filter screen	6	19
129888	"O" ring, coil to housing	1	5	173086	Gasket, orifice	6	20
190876	"O" ring, shaft	1	6	101754	"O" ring	18	21
70295	Plug, pipe	1	7	165296	Pin, roll	12	22
196037	Shaft, manual override	1	8	173085*	Plug, orifice	6	23
129839	Shield, fuel	1	9	178009	Retainer, cup	6	24
129768	Spring	1	10	174298	Screen, filter	6	25
129827	Valve	1	11	166009	Spring, injector	6	26
S-607	Lockwasher	4		AR-40063	Barrel and plunger	6	27
<b>MOUNTING PARTS</b>				185782	Gasket	6	28
171546	Capscrew, valve to housing	2	12	167157	Ball, check	6	29
S-1003-1	Connection (IP)	1		187326*	Barrel, injector	6	
181466	Lockwasher	2	13	189848*	Plug, barrel	24	
154087	"O" ring	1	14	187858*	Coupling, plunger	6	
67684	Washer, plain	2	15	178980*	Plunger, injector	6	
S-1004-1	Elbow, (Auto & C)	1		<b>* Note:</b> Not sold separately.			
<b>Optional</b>				<b>MOUNTING PARTS</b>			
BM-69985	Valve, shutdown (24V, 2 pole)	1		552458	Clamp, injector	6	30
134076	Coil assembly	1		166392	Capscrew, hex head (3/8" - 16 x 2 1/2")	6	31
BM-69982	Valve, shutdown (12V, 2 pole)	1		69280	Washer, plain (25/64")	6	32
134075	Coil assembly	1					
BM-69979	Valve, shutdown (24V, 1 pole)	1					
134074	Coil assembly	1					

PARTS INDENTED ARE INCLUDED IN THE PART UNDER WHICH THEY ARE INDENTED

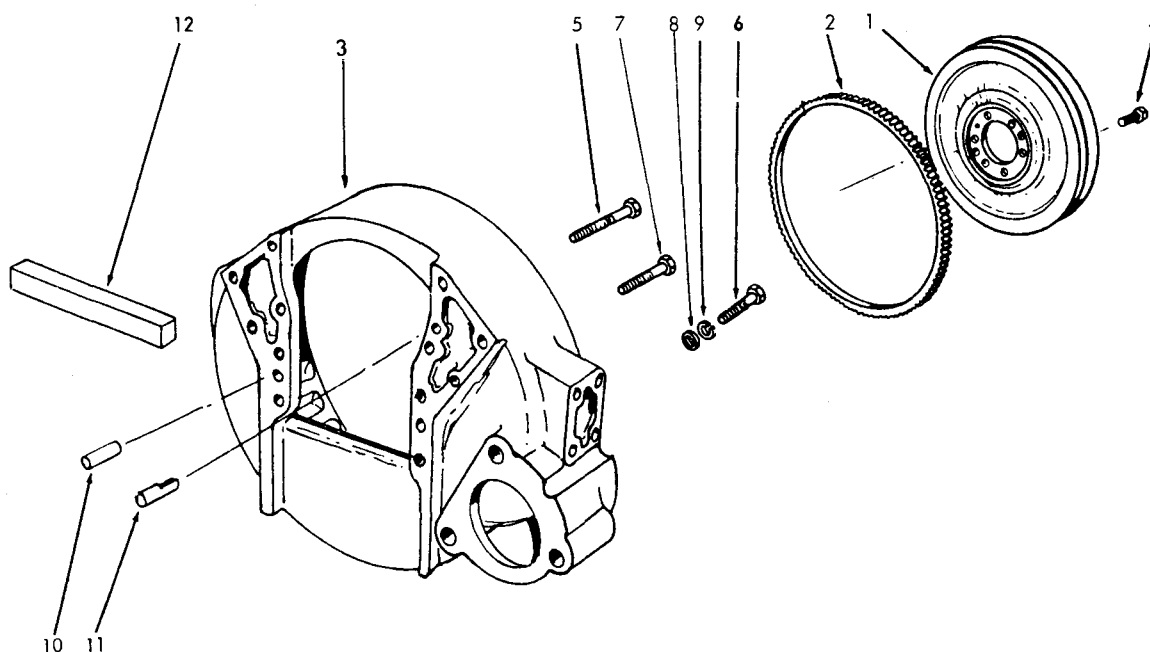


ENGINE APPLICATION		AUTOMOTIVE <input checked="" type="checkbox"/>		B-OFF-HIGHWAY <input type="checkbox"/>		C-CONSTRUCTION & INDUSTRIAL <input checked="" type="checkbox"/>		P-INDUSTRIAL POWER <input checked="" type="checkbox"/>	
PART NUMBER	PART NAME	NO. REQ'D	REF. NO.	PART NUMBER	PART NAME	NO. REQ'D	REF. NO.		
<b>ELECTRICAL EQUIPMENT</b>				<b>STARTING MOTOR</b>					
210127	Alternator	1		<b>Auto &amp; IP Application</b>					
AR-02336	Connector, Regulator (Auto & CI)	1		186397	Motor, starting	1			
AR-02337	Connector, Regulator (Auto & CI)	1		S-106	Capscrew, motor (1/2" - 13 x 1 1/4")	3			
554999	Pulley, alternator (IP & CI)	1	2	S-608	Lock washer, motor (1/2")	3			
555934	Pulley, alternator (Auto)	1	1	<b>CI Application</b>					
191818	Regulator (Auto & CI)	1		Same as above except:					
145027	Switch magnetic (Auto only)	1							
104597	Plate, instruction	1							
<b>MOUNTING PARTS</b>				<b>ADD</b>					
556116	Bracket, alternator	1	5	114123	Gasket, motor	1			
556126	Link alternator	1	7						
S-112	Capscrew (3/8" - 16 x 1")	4							
S-604	Lockwasher (3/8")	4							
S-103-D	Capscrew, alt, bracket (3/8"-16 x 1 1/4")	1							
553604	Washer (3/8") hardened steel	1							
555568	Capscrew	1							
554194	Washer (17/32") hardened steel	2							
555500	Nut hug lock	1							
S-145	Capscrew	1							
554194	Washer (17/32") hardened steel	2							
178447	Belt (CI & IP)	2							
178434	Belt (Auto)	2							

PARTS INDENTED ARE INCLUDED IN THE PART UNDER WHICH THEY ARE INDENTED

ENGINE APPLICATION		AUTOMOTIVE		B-OFF-HIGHWAY		C-CONSTRUCTION & INDUSTRIAL		P-INDUSTRIAL POWER		X
PART NUMBER	PART NAME	NO. REQ'D	REF. NO.	PART NUMBER	PART NAME	NO. REQ'D	REF. NO.			
553685	<b>RADIATOR</b> Radiator	1		554647	<b>MOTOR TIE ROD</b> Tie rod	2				
	<b>MOUNTING PARTS</b>			S-201	Nut	8				
				S-603	Washer, springlock	4				
554591	Stay, radiator (R.B.)	1			<b>REAR SUPPORT</b>					
S-194	Capscrew	4		553627	Support, rear	1				
S-276	Nut	4		S-145	Capscrew	4				
S-205	Nut	4		S-608	Spring lockwasher	4				
554590	Stay, radiator (L.B.)	1			<b>INSTRUMENT PANEL</b>					
S-194	Capscrew	4		555046	Instrument panel	1				
S-276	Nut	4		701214	Ammeter	1				
S-205	Nut	4		554646	Bracket, instrument panel	1				
556372	Bush, radiator mounting	2		650565	Back plate	1				
S-276	Nut	4		553653	Block and terminal	2				
S-205	Nut	4		650427	Case, instrument	1				
650387	Mounting radiator rubber	2		S-159-B	Capscrew	4				
S-600	Lockwasher (1/4")	8		S-109	Capscrew	2				
S-115-C	Capscrew	8		S-115-C	Capscrew	2				
S-144	Capscrew	2		68138	Connection	1				
S-658	Flat washer (21/32")	4		S-902	Coupling, pipe	1				
650864	Bracket support	1		556347	Gauge, water temperature	1				
S-603	Lockwasher (5/8")	2		650651	Gauge, pressure	1				
553690	Pipe water	1		650525	Hourmeter	1				
650385	Pipe water conn.	1		650442	Mounting	4				
69972	Coolant hose	4		S-270	Nut	6				
43828-D	Clamp hose	8		S-223	Nut	2				
554947	Hose swivel assembly	1		S-251	Nut	4				
43828-A	Clamp	2		S-256	Nut	2				
67949	Clip	1		118367	Plate, indicator	1				
650418	Adapter	1		162843	Regulator (12 volt)	1				
AS502660SS	Hose	1		149226	Relay	1				
116935	Adapter	2		S-1334	Screw, machine	4				
179901	Valve water shut off	1		131678	Screw, machine	2				
S-602	Flat washer (13/32")	4		S-600	Spring, lockwasher	12				
S-602	Flat washer (13/32")	4		66501	Switch,	1				
S-602	Flat washer (13/32")	4		102057	Start switch	1				
	<b>RADIATOR SHROUD &amp; FAN GUARD</b>			70427	Washer	4				
S-604	Lockwasher fan mounting	6		150348	Shock mounting assembly	1				
553650	Fan, shroud	1			<b>INSTRUMENT PANEL MOUNTING</b>					
650406	Guard, fan	1		551334	Clip	6				
S-691	Washer, toothlock	8		S-604	Washer Spring Lock	4				
S-600	Spring, lockwasher, guard to shroud	8		650529	Support Throttle cvr	1				
S-167-A	Capscrew, guard to shroud	8		S-117	Capscrew	2				
146157	Flat washer, guard to shroud	8		550466	Clip	1				
651069	Fan	1		68152	Clip	1				
S-120	Capscrew, fan mounting	6		S-1047-A	Elbow	1				
	<b>RESTRICTOR INDICATOR</b>			AS404760SS	Hose	1				
650816	Indicator	1		187734	Throttle control	1				
S-168-C	Capscrew	2								
650817	Flange	1								
650819	Insert	1								
S-224	Nut	2								
555663	Nylon, tube	1								
S-600	Spring, lockwasher	2								
650818	Tap	1								
550465	Tube clip assembly	2								
68455	Plug, pipe	1								
	<b>WIRING HARNESS</b>									
555595	Wiring harness	1								

PARTS INDENTED ARE INCLUDED IN THE PART UNDER WHICH THEY ARE INDENTED



FLYWHEEL, RING GEAR & HOUSING

ENGINE APPLICATION AUTOMOTIVE ☒ B-OFF-HIGHWAY C-CONSTRUCTION & INDUSTRIAL ☒ P-INDUSTRIAL POWER ☒

PART NUMBER	PART NAME	NO. REQ'D	REF. NO.	PART NUMBER	PART NAME	NO. REQ'D	REF. NO.
<b>STANDARD FLYWHEEL, RING GEAR AND HOUSING</b>				<b>MOUNTING PARTS</b>			
BM99705	Flywheel & Ring Gear Assembly (IP & CI)	1		<b>IP APPLICATION</b>			
185539	Flywheel (IP / CI)	1	1	S-106	Capscrew	4	5
154849	Ring gear flywheel (IP & CI)	1	2	106289	Capscrew	14	7
BM99688	Flywheel & ring gear assembly (Auto only)	1		S-608	L/Washer (1/2")	13	9
182853	Flywheel (Auto only)	1		69562	Master dowel	1	10
154849	Ring gear flywheel (Auto only)	1		102957	Pin diamond dowel	1	11
168643	Flywheel housing (Auto)	1	3	556346	Dust seal	1	12
172647	Flywheel housing (CI)	1		S-187	Capscrew	8	6
551462	Flywheel housing (IP)	1	3	554316	Capscrew F/w mounting	8	4
<b>MOUNTING PARTS</b>				<b>MOUNTING PARTS</b>			
<b>AUTO APPLICATION</b>				<b>C APPLICATION</b>			
108601	Capscrew	6		554316	Capscrew f/w mounting	8	4
S-106	Capscrew	8	5	S-106	Capscrew	2	5
106289	Capscrew	14	7	106289	Capscrew	7	7
S-670	Washer (17/32")	13	8	S-608	L/washer (1/2")	13	9
S-608	L/Washer (1/2")	13	9	69562	Master dowel	1	10
69562	Master dowel	1	10	102957	Pin diamond dowel	1	11
102957	Pin diamond dowel	1	11	556346	Dust seal	1	12
556346	Dust seal	1	12	145601	"O" ring	1	
554316	Capscrew flywheel mounting	8	4	172648	Ring rect. sealing gasket sets	9	
				AR-62508	Gasket, set engine	1	
				AR-62506	Gasket, set cylinder head	1	
				RM-68356	Gasket, set fuel pump	1	

PARTS INDENTED ARE INCLUDED IN THE PART UNDER WHICH THEY ARE INDENTED