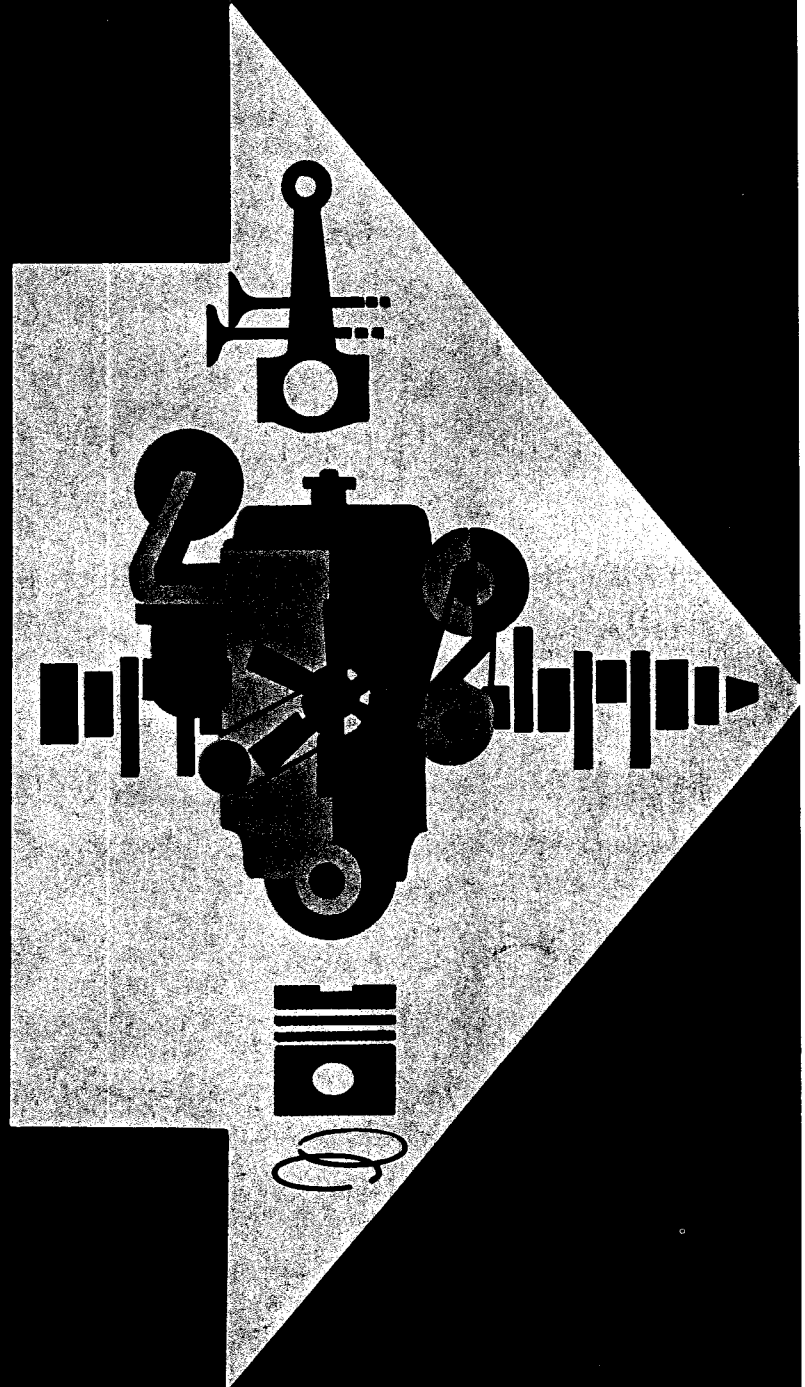




PARTS BOOK

C-175-CI MODEL

BULLETIN 967023



PARTS ORDERING FOR.....

Genuine Cummins Parts and service facilities are world-wide. There are more than 900 Cummins Sales and Service locations in the principal cities of the United States and Canada, and more than 200 Sales and Service locations situated elsewhere throughout the free world. Each distribution outlet is thoroughly equipped with technical data, factory-trained mechanics, modern equipment and a full, adequate stock of Genuine Cummins Parts.

For quicker and better service, your parts requirements should be ordered from your nearest authorized Cummins Distributor or Dealer. At any of the locations prompt, intelligent, courteous service is a basic trademark. Each is ready and eager to help in every possible way through personal contact or through the mail — at your convenience.

The satisfactory ordering and receiving of parts by the purchaser is greatly dependent upon the proper use of available information. In order that all avoidable errors may be eliminated, the following instructions are offered as the purchaser's guide:

1. Write your order clearly, using a typewriter if possible.
2. Be sure to list the correct part number. If in doubt as to the correct part number, state the model and serial number of the engine on which the part is to be used. Part numbers are usually located in various places on the part itself.
3. When possible, arrange your purchase order in part number numerical sequence.
4. Always specify shipping instructions — "Best Way" is satisfactory if you have no preference.
5. State your company name and shipping address clearly.

Genuine Cummins Parts mean QUALITY! They're designed and engineered to fit best in your Cummins Diesel. Each part is made of the highest quality material — on the most accurate of machines — by the top craftsmen of the trade.

You can be sure a Genuine Cummins Part will fit better — do the job better — lessen the chances of costly breakdown. When you buy replacement parts, buy quality. Buy Genuine Cummins Parts!

YOU OWN THE BEST . . . REPAIR WITH THE BEST

C-175-CI DIESEL ENGINE

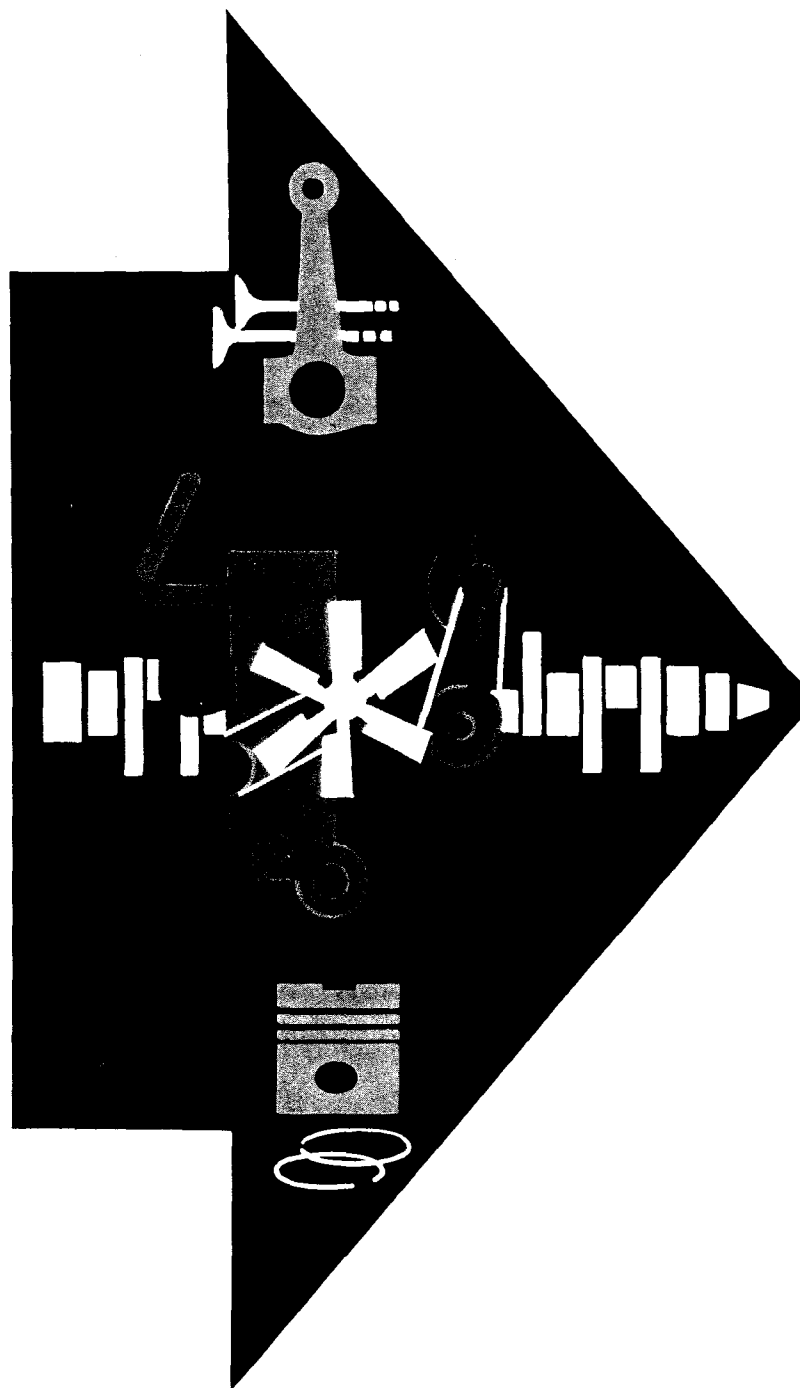
CUMMINS ENGINE COMPANY, INC.

COLUMBUS, INDIANA

PRINTED IN U.S.A.

PRICE \$.25

COPYRIGHT 1964



SPECIAL PARTS

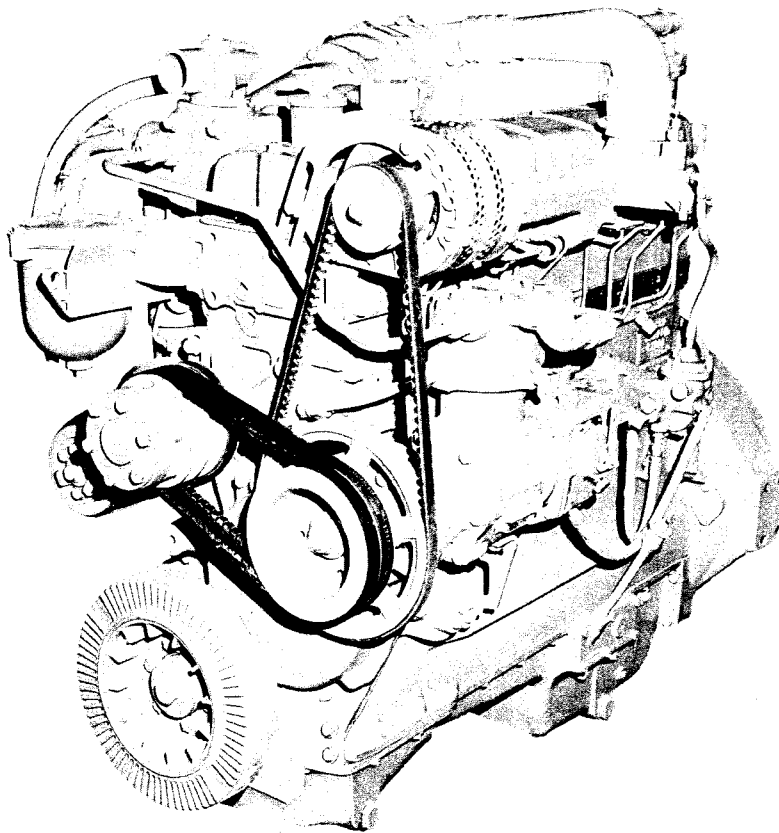
This Parts Book includes those parts that are normally used on our standard engine model. Special Parts peculiar to engine serial No. _____ are listed on the form below. To make certain you have ordered correct parts, refer to this form before submitting Parts Order.

[illegible]

Cummins Distributor _____

CONTENTS

DESCRIPTION	PAGE
Cylinder Block - - - - -	1
Camshaft Bushing, Cylinder Liner	
Crankshaft, Main Bearings and Vibration Damper - - - - -	2
Connecting Rod, Piston and Rings - - - - -	3
Rear Cover and Camshaft - - - - -	4
Pushrods and Tappets - - - - -	5
Rocker Levers - - - - -	6
Cylinder Head - - - - -	7
Cylinder Head Cover - - - - -	8
Crankcase Breather	
Gear Cover - - - - -	9
Oil Pan, Dipstick and Tube - - - - -	10
Lubricating Oil Pump - - - - -	11
Lubricating Oil Filter - - - - -	12
Lubricating Oil Cooler - - - - -	13
Water Pump and Pulley - - - - -	14
Fan Hub - - - - -	15
Thermostat Housing and Water Connection - - - - -	16
Air Intake Manifold and Connection - - - - -	17
Exhaust Manifold - - - - -	18
Air Cleaner - - - - -	19
PT Fuel System - - - - -	20-21
Fuel Pump Damper, Gear Pump and Fuel Filter, Shutdown Valve, Fuel Tubing and Injector	
Corrosion Resistor - - - - -	22
Lubricating Oil By-Pass Filter - - - - -	23
Turbocharger (T-350) - - - - -	24
Turbocharger Oil Filter - - - - -	25
Aneroid Control - - - - -	26
Fuel Pump Drive - - - - -	27
Flywheel, Ring Gear, Flywheel Housing, Gasket Sets and Electrical Equipment - - - - -	28



CUMMINS C-175-CI DIESEL ENGINE

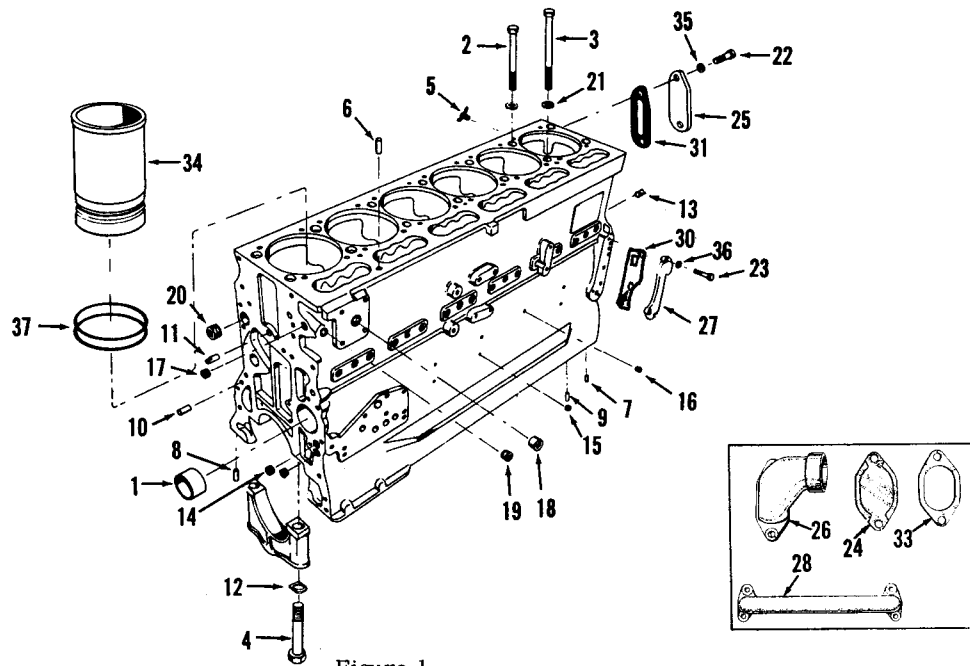


Figure 1
CYLINDER BLOCK

Part Number	Part Name	No. Req.	Fig. No.	Ref. No.	Part Number	Part Name	No. Req.	Fig. No.	Ref. No.
BM-55041	Block, cylinder (150220)	1			65473	Cover, water header end	1	1	25
100673	Bushing, camshaft	6	1	1	103726	Connection, water inlet	1	1	26
122936	Capscrew, head (short)	7	1	2	125744	Connection	1	1	27
122937	Capscrew, head (long)	7	1	3	107947	Cock, drain	1		
104293	Capscrew, main bearing	14	1	4	103727	Connection, oil crossover	1	1	28
107947	Cock, drain	1	1	5	111955	Gasket, connection	1		
68445	Dowel, head to block	2	1	6	68615	Gasket, connection	1	1	30
120830	Dowel, main bearing cap	2	1	7	65474	Gasket, cover	1	1	31
68568	Dowel, oil pan to block	1	1	8	120324	Gasket	1		
70645	Dowel, oil pan to block	1	1	9	68619	Gasket, connection	1	1	33
70653	Dowel, gear cover	1	1	10	112851	Liner, cylinder	6	1	34
60408	Dowel, gear cover	1	1	11	S-604	Lockwasher	6	1	35
69236	Dowel, lubricating pump to block	2			S-605	Lockwasher	8	1	36
60533	Lockplate, main bearing capscrews	14	1	12	112847	Packing, liner	12	1	37
112076	Plug, pipe, rear water drain	1	1	13	S-910-B	Plug, pipe	1		
66351	Plug, pipe	4	1	14	S-995	Plug, pipe	1		
69901	Plug, pipe	3	1	15	140166	Plate, name	1		
S-911-B	Plug, pipe, oil gallery	9	1	16	S-2267	Screw, nameplate	6		
S-910-B	Plug, pipe, oil gallery to tappet	2	1	17	S-602	Washer, plain	2		
S-915-A	Plug, pipe	1	1	18					
S-935-B	Plug, pipe, water drain	1	1	19					
S-962	Plug, pipe, water header	1							
S-995	Plug, pipe	1	1	20					
113995	Washer, head capscrews	14	1	21					
S-109	Capscrew, water header cover	2	1	22					
S-103-D	Capscrew	2							
S-115	Capscrew	4							
S-106-A	Capscrew, oil transfer connection	4	1	23					
100902	Cover, water header	1	1	24					

PARTS INDENTED ARE INCLUDED IN THE PART UNDER WHICH THEY ARE INDENTED

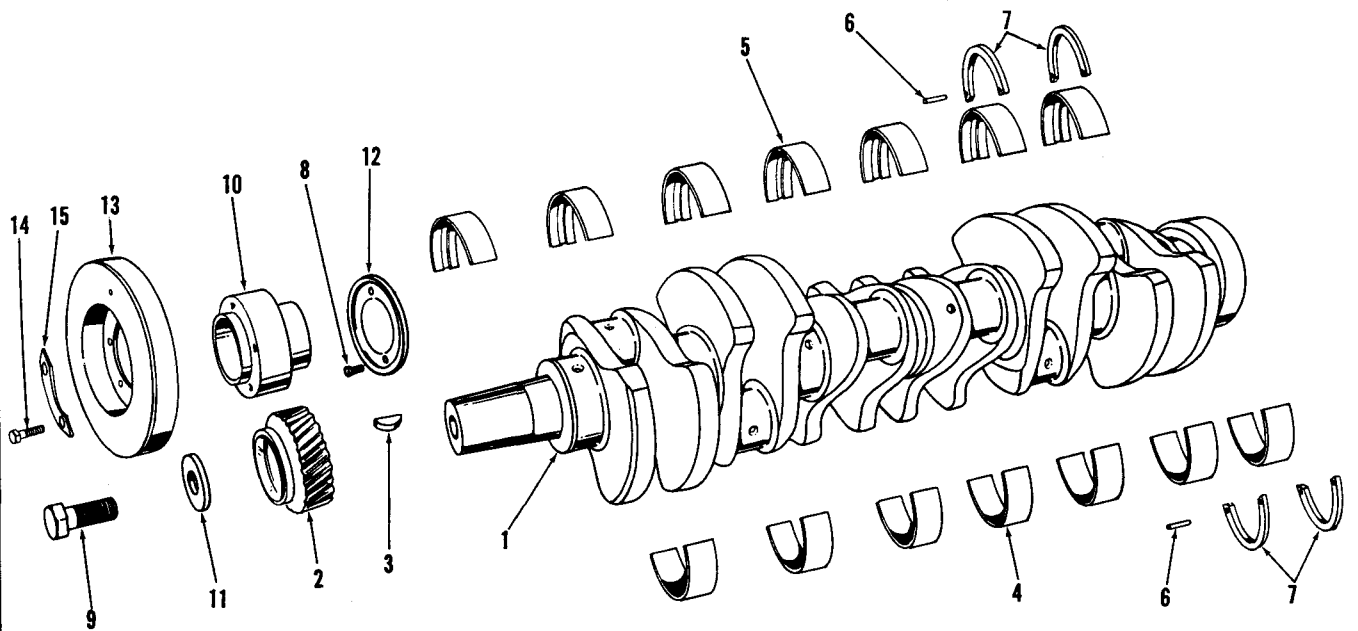


Figure 2
CRANKSHAFT, MAIN BEARINGS, and DAMPER

Part Number	Part Name	No. Req.	Fig. No.	Ref. No.	Part Number	Part Name	No. Req.	Fig. No.	Ref. No.
BM-72703	Crankshaft assembly	1							
146450	Crankshaft	1	2	1					
43213-1	Gear, crankshaft	1	2	2					
S-331	Key	1	2	3					
S-911-B	Plug, crankshaft pipe	6							
BM-27522	* Main bearing set	1							
44297	Bearing, main (lower)	7	2	4					
43214	Bearing, main (upper)	7	2	5					
124922	Pin, dowel	2	2	6					
150310	Ring, thrust	4	2	7					
S-118-A	Capscrew	2	2	8					
140410	Capscrew	1	2	9					
137327	Hub, vibration damper	1	2	10					
140411	Retainer, crankshaft	1	2	11					
70077	Slinger, oil	1	2	12					
<p>*Main bearings may be ordered in standard .010", .020", .030", .040" undersize. When ordering always state size required.</p>									
20634-1	Damper, vibration	1	2	13					
69793	Capscrew	6	2	14					
68909-1	Lockplate	3	2	15					

PARTS INDENTED ARE INCLUDED IN THE PART UNDER WHICH THEY ARE INDENTED

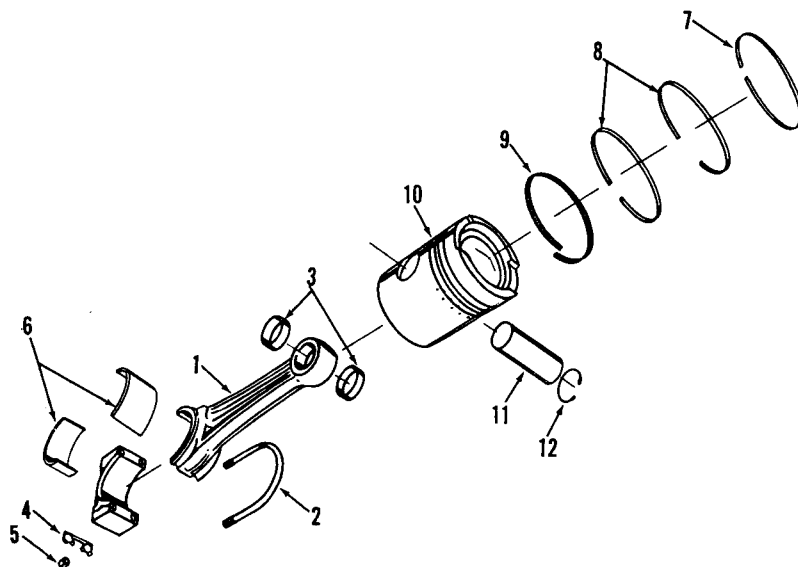


Figure 3
CONNECTING ROD, PISTON AND RINGS

Part Number	Part Name	No. Req.	Fig. No.	Ref. No.	Part Number	Part Name	No. Req.	Fig. No.	Ref. No.
BM-71330	Connecting rod (143523)	6	3	1	BM-60613	Piston assembly .030" oversize	6		
110275	Bolt, rod	12	3	2	130503	Piston	6	3	10
143940	Bushing, piston pin	12	3	3	112904	Pin, piston	6	3	11
60358	Lockplate	12	3	4	S-16256	Ring, snap	12	3	12
S-265	Nut, bolt	24	3	5	BM-60614	Piston assembly .040" oversize	6		
127730	Bearing, connecting rod	12	3	6	130504	Piston	6	3	10
BM-55050	Ring set, piston	1			112904	Pin, piston	6	3	11
145150	Ring, compression	6	3	7	S-16256	Ring, snap	12	3	12
112880	Ring, compression	12	3	8					
118630	Ring, oil	6	3	9					
BM-55052	Ring Set .020" oversize	1							
145152	Ring, compression	6	3	7					
112882	Ring, compression	12	3	8					
118632	Ring, oil	6	3	9					
BM-55053	Ring Set .030" oversize	1							
145153	Ring, compression	6	3	7					
112883	Ring, compression	12	3	8					
118633	Ring, oil	6	3	9					
BM-55054	Ring Set .040" oversize	1							
145154	Ring, compression	6	3	7					
112884	Ring, compression	12	3	8					
118634	Ring, oil	6	3	9					
BM-60610	Piston assembly	6							
130500	Piston	6	3	10					
112904	Pin, piston	6	3	11					
S-16256	Ring, snap	12	3	12					
BM-60612	Piston assembly .020" oversize	6							
130502	Piston	6	3	10					
112904	Pin, piston	6	3	11					
S-16256	Ring, snap	12	3	12					

PARTS INDENTED ARE INCLUDED IN THE PART UNDER WHICH THEY ARE INDENTED

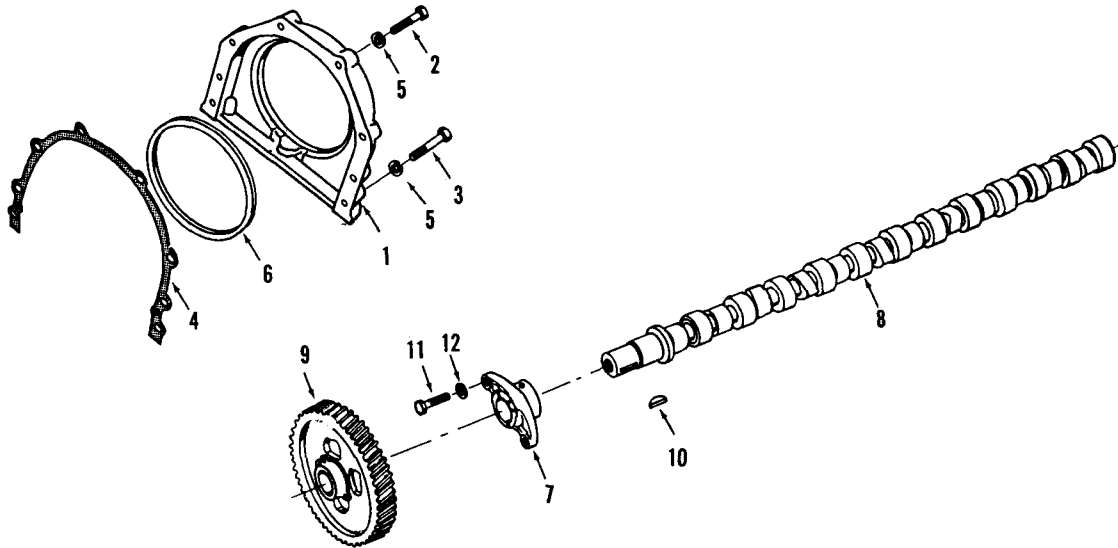


Figure 4
REAR COVER and CAMSHAFT

6301269

Part Number	Part Name	No. Req.	Fig. No.	Ref. No.	Part Number	Part Name	No. Req.	Fig. No.	Ref. No.
106203	Cover, rear	1	4	1	BM-55427	Camshaft assembly	1		
S-106-A	Capscrew	2	4	2	121720	Bearing, camshaft	1	4	7
S-111	Capscrew	6	4	3	121580	Camshaft	1	4	8
102151	Gasket, cover	1	4	4	20836	Gear, camshaft	1	4	9
S-605	Lockwasher	8	4	5	120602	Key	1	4	10
141745	Seal, oil	1	4	6					
					S-112	Capscrew, bearing	2	4	11
					S-604	Lockwasher	2	4	12

PARTS INDENTED ARE INCLUDED IN THE PART UNDER WHICH THEY ARE INDENTED

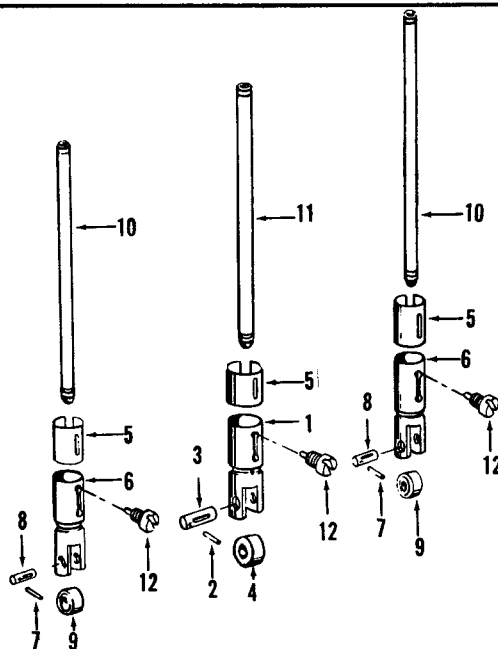


Figure 5
PUSH RODS and TAPPETS

6201020

Part Number	Part Name	No. Req.	Fig. No.	Ref. No.	Part Number	Part Name	No. Req.	Fig. No.	Ref. No.
BM-40616	Tappet, injector (113745)	6	5	1					
108187	Lockwire	6	5	2					
113748	Pin, roller	6	5	3					
60521	Roller, tappet	6	5	4					
108156	Sleeve, guide	6	5	5					
BM-40615	Tappet, valve (113746)	12	5	6					
108186	Lockwire	12	5	7					
113749	Pin, roller	12	5	8					
69027	Roller, tappet	12	5	9					
108156	Sleeve, guide	12	5	5					
BM-46364	Rod, intake and exhaust push (112695)	12	5	10					
BM-46363	Rod, injector push (112699)	6	5	11					
126299	Guide, tappet	18	5	12					

PARTS INDENTED ARE INCLUDED IN THE PART UNDER WHICH THEY ARE INDENTED

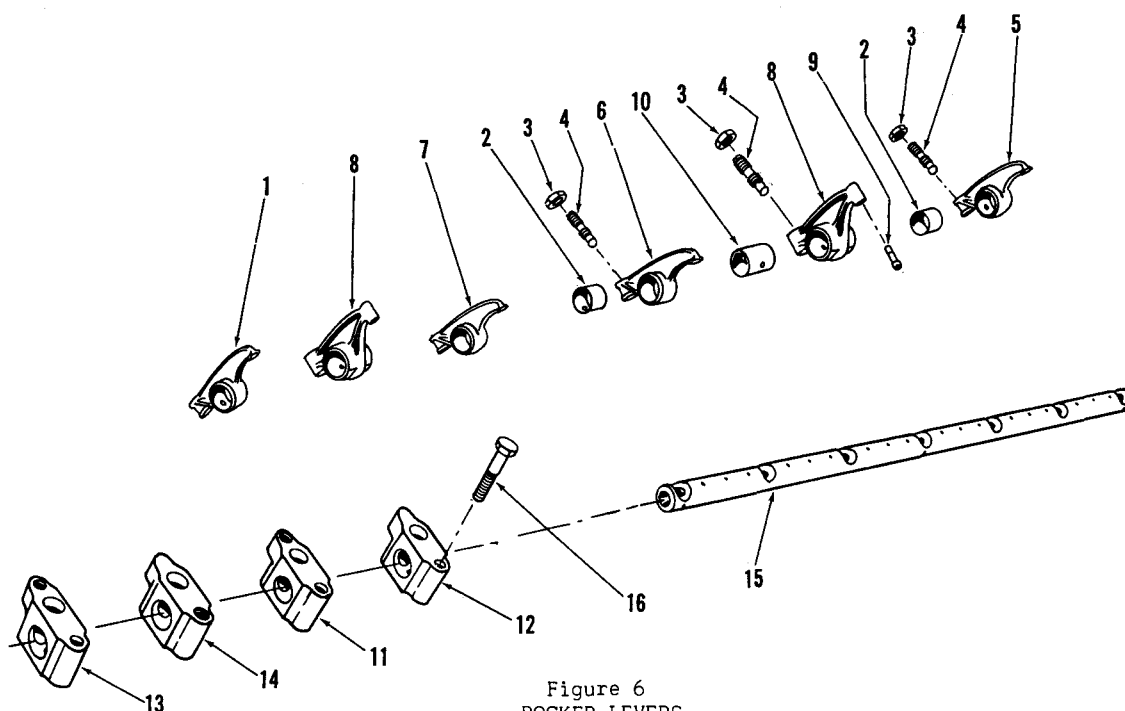


Figure 6
ROCKER LEVERS

Part Number	Part Name	No. Req.	Fig. No.	Ref. No.	Part Number	Part Name	No. Req.	Fig. No.	Ref. No.
BM-96069	Lever, exhaust valve	3	6	1	BM-96078	Lever, injector (168826)	6	6	8
BM-96068	Lever and bushing (168829) Cyl. 1,3 and 5	3			BM-96077	Lever and bushing	6		
142190	Bushing, lever	3	6	2	152173	Socket, injector	6	6	9
S-212	Nut, adjusting screw	3	6	3	BM-96076	Lever and bushing	6	6	10
168306	Screw, adjusting	3	6	4	142180	Bushing	6	6	3
					S-212	Nut, adjusting screw	6	6	4
					168306	Screw, adjusting	6	6	
BM-96073	Lever, exhaust valve	3	6	5	114452	Bearing, shaft No. 3,5	2	6	11
BM-96072	Lever and bushing (168827) Cyl. 2,4 and 6	3			114450	Bearing, shaft No. 4	1	6	12
142190	Bushing, lever	3	6	2	114451	Bearing, shaft No. 1,7	2	6	13
S-212	Nut, adjusting screw	3	6	3	114453	Bearing, shaft No. 2,6	2	6	14
168306	Screw, adjusting	3	6	4	142201	Shaft, rocker lever	1	6	15
					113987	Plug, expansion	2		
BM-96082	Lever, intake valve	3	6	6	S-150	Capscrew, bearing to cylinder head	7	6	16
BM-96081	Lever and bushing (168830) Cyl. 2,4 and 6	3							
142190	Bushing, lever	3	6	2					
S-212	Nut, adjusting screw	3	6	3					
168306	Screw, adjusting	3	6	4					
BM-96080	Lever, intake valve	3	6	7					
BM-96079	Lever and bushing (168828) Cyl. 1,3 and 5	3							
142190	Bushing, lever	3	6	2					
S-212	Nut, adjusting screw	3	6	3					
168306	Screw, adjusting	3	6	4					

PARTS INDENTED ARE INCLUDED IN THE PART UNDER WHICH THEY ARE INDENTED

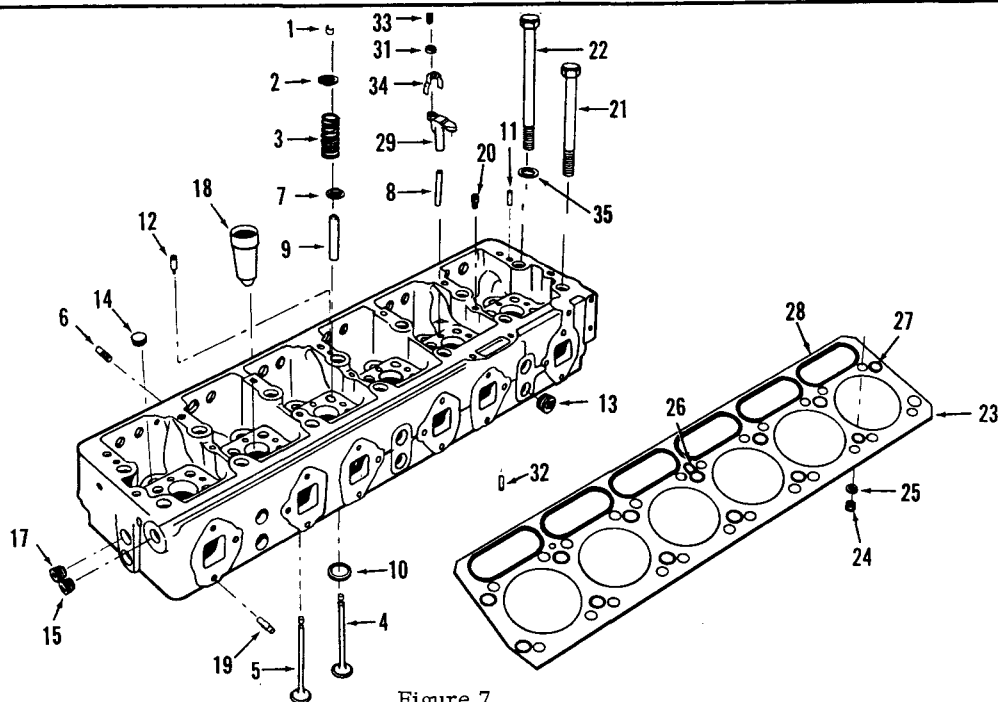


Figure 7
CYLINDER HEAD

Part Number	Part Name	No. Req.	Fig. No.	Ref. No.	Part Number	Part Name	No. Req.	Fig. No.	Ref. No.
BM-74486	Head, cylinder (143561)	1			147389	Screw, crosshead	12	7	33
119819	Half-collet, valve	48	7	1	112729	Retainer, valve cross-head	12	7	34
119806	Retainer, valve spring	24	7	2					
120089	Spring, valve	24	7	3	113995	Washer, cylinder head	14	7	35
144910	Valve, exhaust	12	7	4					
44748	Valve, intake	12	7	5					
BM-74448	Head, cylinder less valves	1							
146891	Dowel, manifold threaded	3	7	6					
105292	Guide valve, spring	24	7	7					
143526	Guide, crosshead valve	12	7	8					
105293	Guide, valve	24	7	9					
70843	Insert, valve seat	24	7	10					
60488	Pin, dowel	2	7	11					
69233	Pin, dowel	1	7	12					
S-911-B	Plug, pipe	3							
S-995	Plug, pipe	12	7	13					
S-915-A	Plug, pipe	6	7	14					
70459	Plug, fuse	1	7	15					
67622	Plug, pipe	1	7	17					
108019	Sleeve, injector	6	7	18					
103847	Stud, exhaust manifold	6	7	19					
63876-1	Ventilator	3	7	20					
122936	Capscrew (short)	7	7	21					
122937	Capscrew (long)	7	7	22					
BM-64683	Gasket, cylinder head (143693)	1	7	23					
132705	Grommet, gasket	24	7	25					
114326	Grommet	1	7	26					
115984	Grommet	13	7	27					
115985	Ring, push tube	6	7	28					
131168	Retainer, grommet	24	7	24					
116137	Crosshead, valve	6	7	29					
116138	Crosshead, valve	6							
S-273	Nut	12	7	31					
68445	Pin, dowel	2	7	32					

PARTS INDENTED ARE INCLUDED IN THE PART UNDER WHICH THEY ARE INDENTED

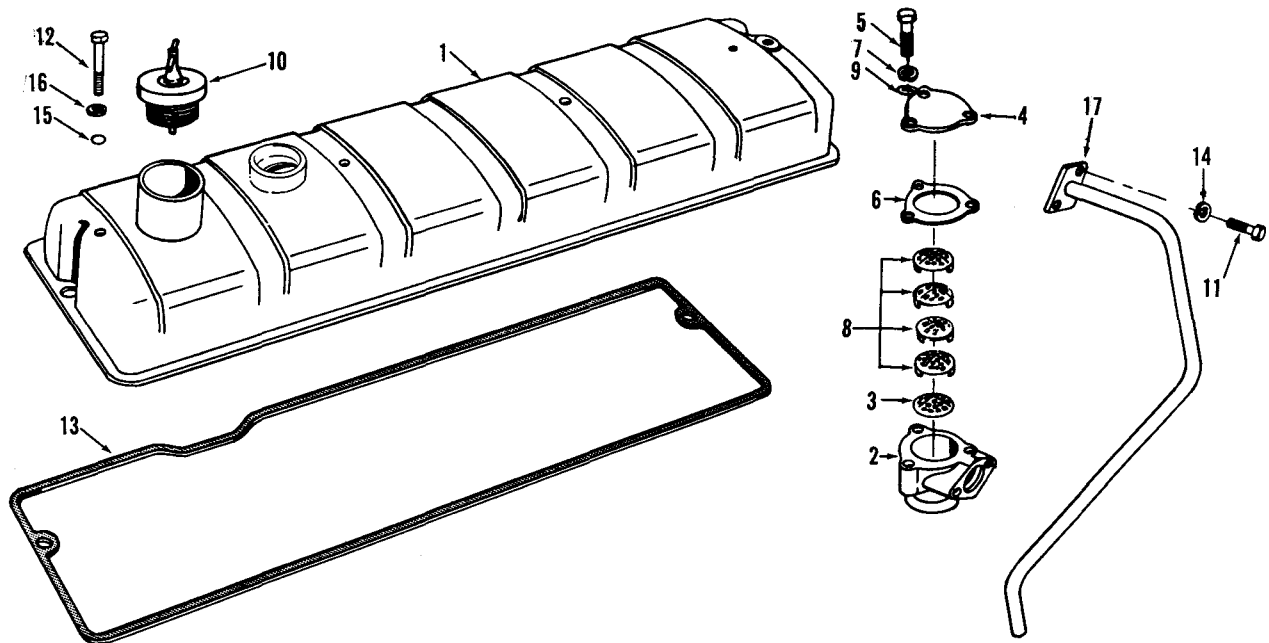


Figure 8
CYLINDER HEAD COVER AND BREATHER

Part Number	Part Name	No. Req.	Fig. No.	Ref. No.	Part Number	Part Name	No. Req.	Fig. No.	Ref. No.
132402	Cover, cylinder head	1	8	1					
250729	Breather, crankcase	1							
122123	Body	1	8	2					
105021	Baffle	1	8	3					
122136	Cover	1	8	4					
S-167-A	Capscrew	3	8	5					
122135	Gasket	1	8	6					
S-600	Lockwasher	3	8	7					
105019	Screen	4	8	8					
S-631	Washer	3	8	9					
107981	Cap, filler tube	1	8	10					
S-115	Capscrew	2	8	11					
S-104	Capscrew	4	8	12					
69911	Clamp	1							
128478	Gasket, cover	1	8	13					
S-605	Lockwasher	2	8	14					
BM-50750	Seal, capscrew	1							
70415	"O" ring	4	8	15					
115231	Washer, cupped	4	8	16					
120998	Tube, vent	1	8	17					

PARTS INDENTED ARE INCLUDED IN THE PART UNDER WHICH THEY ARE INDENTED

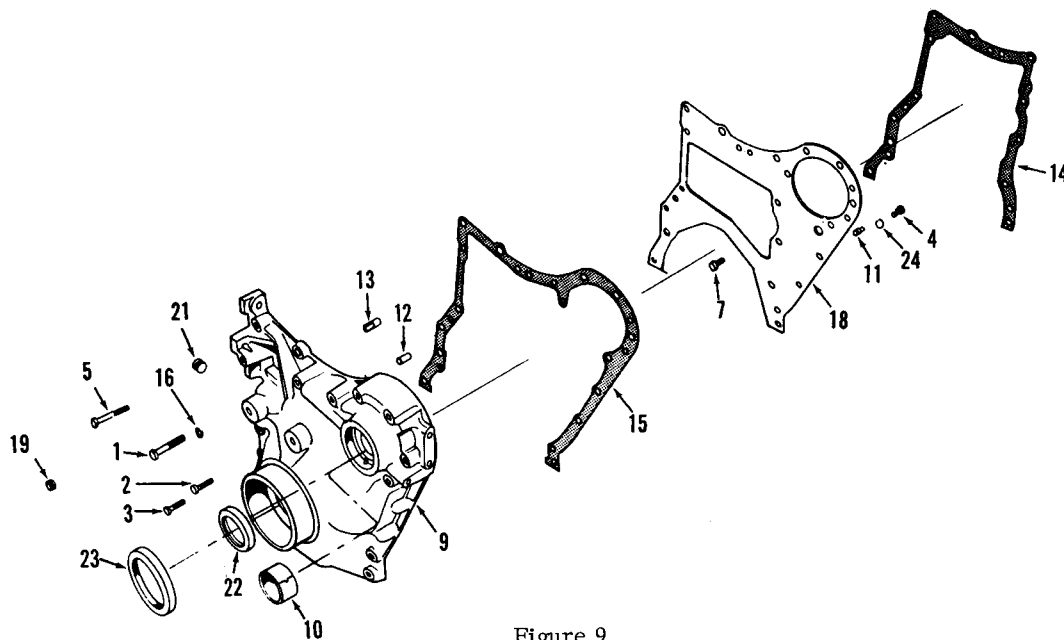
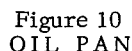


Figure 9
GEAR COVER

6302084

Part Number	Part Name	No. Req.	Fig. No.	Ref. No.	Part Number	Part Name	No. Req.	Fig. No.	Ref. No.
S-104	Capscrew, cover to block	1	9	1					
S-120	Capscrew, cover to block	2	9	2					
S-103-D	Capscrew, cover to block	4	9	3					
S-117	Capscrew, plate to cover	2	9	4					
S-141	Capscrew, cover to block	6	9	5					
S-163	Capscrew, plate to block	1							
S-109	Capscrew, plate to block	3	9	7					
S-119	Capscrew	1							
BM-79814	Cover, gear (161194)	1	9	9					
139810	Bushing	1	9	10					
68226	Bushing, trunnion	1							
67857	Dowel	1	9	11					
60408	Dowel (Master)	1	9	12					
70653	Dowel (Diamond)	1	9	13					
150306	Gasket, plate to block	1	9	14					
150299	Gasket, cover to plate	1	9	15					
S-604	Lockwasher	19	9	16					
S-605	Lockwasher	1							
150297	Plate, gear	1	9	18					
S-910-B	Plug, pipe	1	9	19					
67622	Plug, pipe	1							
S-915-	Plug, pipe	1	9	21					
140896	Seal, oil	1	9	22					
141743	Seal, crankshaft oil	1	9	23					
S-602	Washer, plain	3	9	24					

PARTS INDENTED ARE INCLUDED IN THE PART UNDER WHICH THEY ARE INDENTED



PARTS INDENTED ARE INCLUDED IN THE PART UNDER WHICH THEY ARE INDENTED

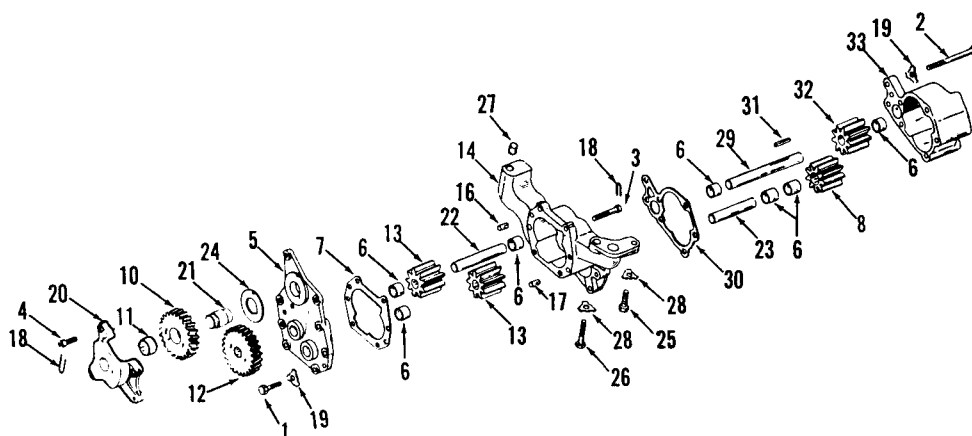


Figure 11
LUBRICATING OIL PUMP

6305356

Part Number	Part Name	No. Req.	Fig. No.	Ref. No.	Part Number	Part Name	No. Req.	Fig. No.	Ref. No.
BM-35348	Pump, oil	1			S-112	Capscrew	1	11	25
S-115	Capscrew, cover to housing	3	11	1	S-103-D	Capscrew	2	11	26
S-138-C	Capscrew	1	11	2	69236	Dowel, pump to block	2	11	27
S-185-A	Capscrew	1			68908	Lockplate	3	11	28
172513	Capscrew	1	11	3					
172514	Capscrew	4	11	4					
BM-35344	Cover and bushing (108198)	1	11	5					
68586	Bushing, drive shaft	2	11	6					
108224	Gasket, cover to housing	1	11	7					
108728	Gasket	1	11	30					
BM-20443	Gear and bushing (68589)	1	11	8					
68586	Bushing, driven gear	2	11	9					
BM-20442	Gear and bushing (43238-1)	1	11	10					
69510	Bushing, idler gear	1	11	11					
43240	Gear, drive	1	11	12					
68588	Gear, driven	2	11	13					
108108	Gear, scavenger drive	1	11	32					
BM-35345	Housing and bushing (108167)	1	11	14					
68586	Bushing, drive shaft	2	11	15					
BM-35346	Housing, scavenger(108717)	1	11	33					
68586	Bushing	1							
68585	Dowel, cover to housing	1	11	16					
111544	Dowel	1							
68595	Dowel, cover to housing	1	11	17					
108109	Key	1	11	31					
67089	Lockwire	5	11	18					
68908-A	Lockplate, cover to body	4	11	19					
100571	Retainer, idler gear	1	11	20					
69509	Shaft, idler gear	1	11	21					
68590	Shaft, drive	1	11	22					
68603	Shaft	1	11	23					
108146	Shaft, scavenger drive	1	11	29					
69508	Washer, thrust	1	11	24					

PARTS INDENTED ARE INCLUDED IN THE PART UNDER WHICH THEY ARE INDENTED

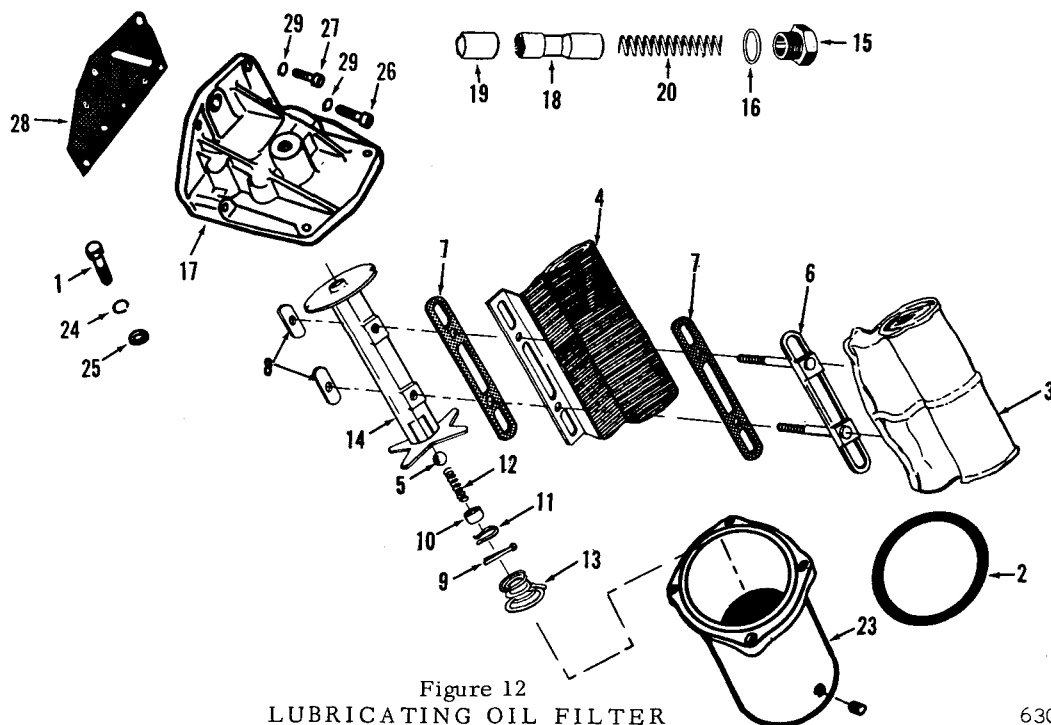


Figure 12
LUBRICATING OIL FILTER

6302077

Part Number	Part Name	No. Req.	Fig. No.	Ref. No.	Part Number	Part Name	No. Req.	Fig. No.	Ref. No.
BM-62798	Filter assembly, oil	1			112795	Gasket, head to block	1	12	28
S-137	Capscrew, head to shell	4	12	1	S-604	Lockwasher	4	12	29
114479	Decal	1							
69751	Gasket, cover to shell	1	12	2					
104926	Filter assembly	1							
S-1915-1	Element, assembly	1							
S-1953	Bag, filter	1	12	3					
134729	Seperator	1	12	4					
128798	Spool assembly	1							
128805	Ball, by-pass relief	1	12	5					
128800	Clamp, bag	1	12	6					
128801	Gasket, clamp	2	12	7					
128802	Nut, clamp	2	12	8					
S-503	Pin, cotter	1	12	9					
128803	Retainer, spring	1	12	10					
128807	Ring, retaining	1	12	11					
128804	Spring, by-pass adjusting	1	12	12					
128806	Spring, shock	1	12	13					
128799	Spool	1	12	14					
BM-45611	Head assembly, filter	1							
69354	Cap, spring retaining	1	12	15					
S-3050	Gasket, cap	1	12	16					
148659	Head, filter	1	12	17					
BM-78225	Plunger, relief valve	1							
148216	Plunger, high pressure	1	12	18					
148217	Plunger, oil pressure	1	12	19					
69355	Spring, relief valve	1	12	20					
S-911-B	Plug, pipe	1	12						
69901	Plug, drain	1	12	22					
250722	Shell assembly	1	12	23					
S-610	Lockwasher	4	12	24					
S-622	Washer, plain	4	12	25					
S-112	Capscrew	3	12	26					
S-141	Capscrew	1	12	27					

PARTS INDENTED ARE INCLUDED IN THE PART UNDER WHICH THEY ARE INDENTED

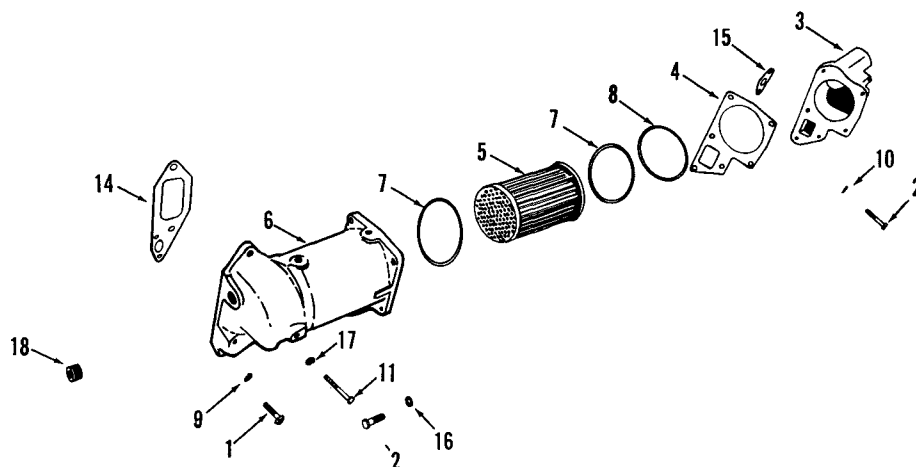


Figure 13
LUBRICATING OIL COOLER

6306135

Part Number	Part Name	No. Req.	Fig. No.	Ref. No.	Part Number	Part Name	No. Req.	Fig. No.	Ref. No.
BM-48784	Cooler assembly, lubricating oil	1	13						
S-103-D	Capscrew, cover to housing	4	13	1					
S-119	Capscrew, cover to housing	2	13	2					
111749	Cover, lubricating oil cooler	1	13	3					
111956	Gasket, front cover to housing	1	13	4					
BM-54620	Housing and retainer assembly	1	13						
110848	Element	1	13	5					
111865	Housing	1	13	6					
148293	"O" ring	2	13	7					
110827	Retainer, cooler and "O" ring	1	13	8					
S-604	Lockwasher, cover to housing	4	13	9					
S-605	Lockwasher, cover to housing	2	13	10					
S-103-D	Capscrew, cooler to block	1	13	11					
S-103	Capscrew, cooler to block	1							
S-119	Capscrew, cooler to block	3							
68615	Gasket, cooler to block (rear)	1	13	14					
111955	Gasket, cooler to block (front)	1	13	15					
S-605	Lockwasher, housing to block	4	13	16					
S-604	Lockwasher, housing to block	1	13	17					
S-915-A	Plug, pipe	1	13	18					

PARTS INDENTED ARE INCLUDED IN THE PART UNDER WHICH THEY ARE INDENTED

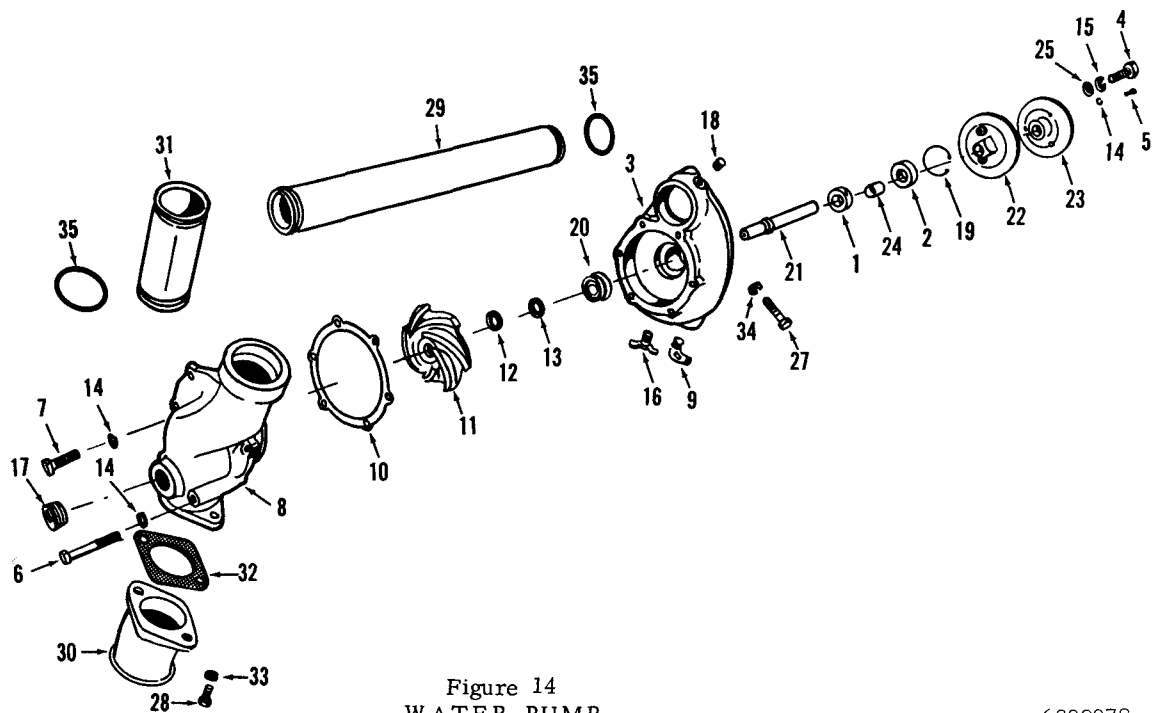


Figure 14
WATER PUMP

6302078

Part Number	Part Name	No. Req.	Fig. No.	Ref. No.	Part Number	Part Name	No. Req.	Fig. No.	Ref. No.
BM-77463	Pump, water	1			S-610	Lockwasher	3	14	34
69289	Bearing, ball	1	14	1	70624	"O" ring	4	14	35
70171	Bearing, ball	1	14	2					
154180	Body, pump	1	14	3					
S-155	Capscrew	1	14	4					
S-119	Capscrew	3	14	5					
S-185-A	Capscrew	2	14	6					
S-115	Capscrew	4	14	7					
101222	Cover, pump	1	14	8					
S-1004-1	Elbow	1	14	9					
44818	Gasket	1	14	10					
BM-71655	Impeller (122294)	1	14	11					
143913	Film, bonding	1	14	12					
135079	Seat, impeller	1	14	13					
S-605	Lockwasher	9	14	14					
S-610	Lockwasher	1	14	15					
S-962-E	Petcock	1	14	16					
S-995	Plug, pipe	1	14	17					
S-911-B	Plug, pipe	1	14	18					
132427	Ring, retaining	1	14	19					
144306	Seal, pump	1	14	20					
44769	Shaft	1	14	21					
120400	Sheave, fixed	1	14	22					
116741	Sheave, adjusting	1	14	23					
105287	Spacer	1	14	24					
70880	Washer, plain	1	14	25					
101427	Belt	1							
103009	Capscrew	3	14	27					
S-112	Capscrew	2	14	28					
112923	Connection	1	14	29					
69910	Connection, inlet	1	14	30					
70627	Coupling, by-pass	1	14	31					
69909	Gasket, connection	1	14	32					
S-604	Lockwasher	2	14	33					

PARTS INDENTED ARE INCLUDED IN THE PART UNDER WHICH THEY ARE INDENTED

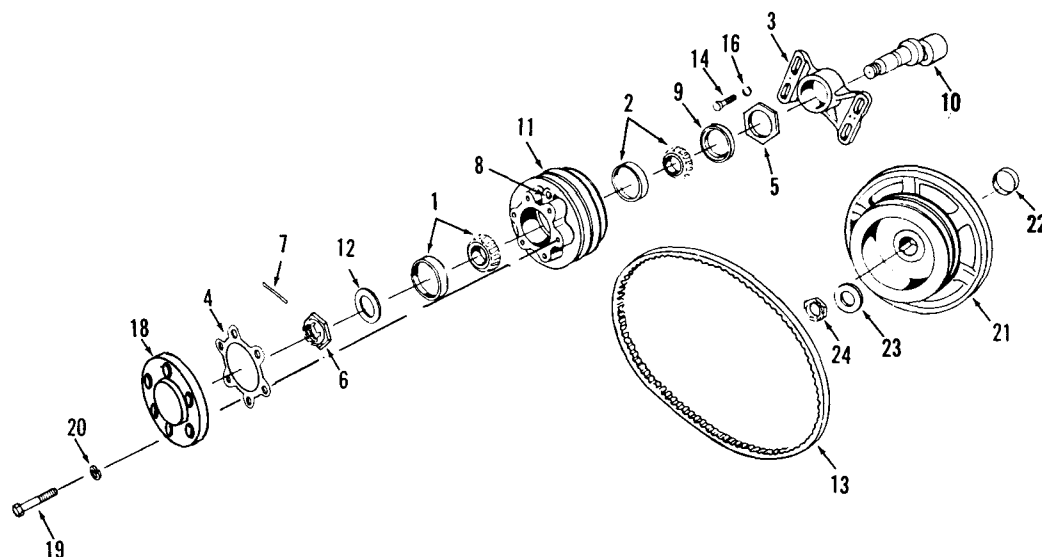


Figure 15
FAN HUB

Part Number	Part Name	No. Req.	Fig. No.	Ref. No.	Part Number	Part Name	No. Req.	Fig. No.	Ref. No.
BM-77521	Hub, fan	1							
143116	Bearing	1	15	1					
116759	Bearing	1	15	2					
143077	Bracket, fan	1	15	3					
143108	Gasket	1	15	4					
143089	Nut	1	15	5					
146650	Nut	1	15	6					
S-510	Pin	1	15	7					
S-911-B	Plug, pipe	2	15	8					
106276	Seal, oil	1	15	9					
141762	Shaft, fan hub	1	15	10					
142981	Pulley, fan	1	15	11					
146651	Washer, clamp	1	15	12					
124466	Belt	2	15	13					
S-155	Capscrew	4	15	14					
S-610	Lockwasher	4	15	16					
152237	Spacer	1	15	18					
S-120	Capscrew, spacer	4	15	19					
S-604	Lockwasher	4	15	20					
	FAN DRIVE PULLEY								
BM-51278	Pulley and sleeve (120313)	1	15	21					
70755	Sleeve	1	15	22					
S-690	Washer, plain	1	15	23					
105297	Locknut	1	15	24					

PARTS INDENTED ARE INCLUDED IN THE PART UNDER WHICH THEY ARE INDENTED

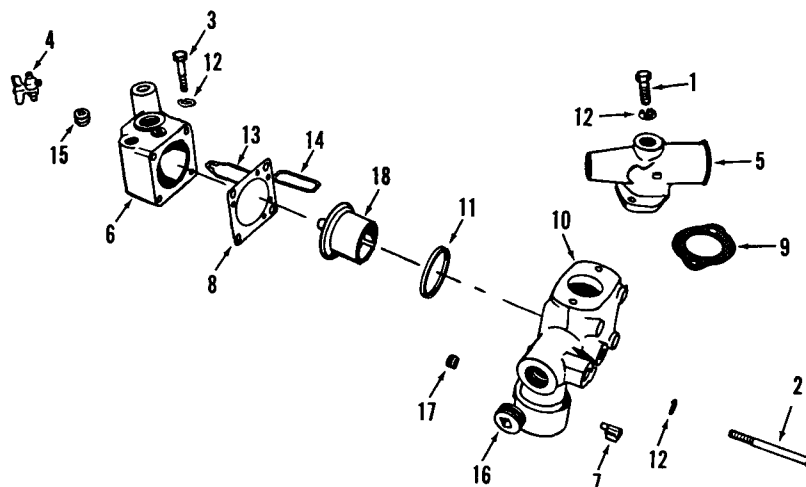


Figure 16
THERMOSTAT HOUSING and CONNECTION

6302080

Part Number	Part Name	No. Req.	Fig. No.	Ref. No.	Part Number	Part Name	No. Req.	Fig. No.	Ref. No.
108707	Capscrew	2	16	1					
S-105	Capscrew	4	16	2					
S-112	Capscrew	2	16	3					
S-962-E	Cock, drain	1	16	4					
42354-B	Connection, water outlet	1	16	5					
116673	Connection, cylinder head water outlet	1	16	6					
116684	Elbow, restrictive	1	16	7					
116681	Gasket, thermostat housing	1	16	8					
9221	Gasket, connection	1	16	9					
BM-73365	Housing, thermostat (145459)	1	16	10					
135600	Seal	1	16	11					
S-604	Lockwasher	8	16	12					
BM-49918	Plate and insert	1							
118374	Plate, connection to head	1	16	13					
118375	Insert, connection to head	1	16	14					
S-915-A	Plug, pipe	4	16	15					
S-962	Plug, pipe	2	16	16					
S-910-B	Plug, pipe	2	16	17					
135675	Thermostat (170° to 185°)	1	16	18					
116683	Tube assembly	1							

PARTS INDENTED ARE INCLUDED IN THE PART UNDER WHICH THEY ARE INDENTED

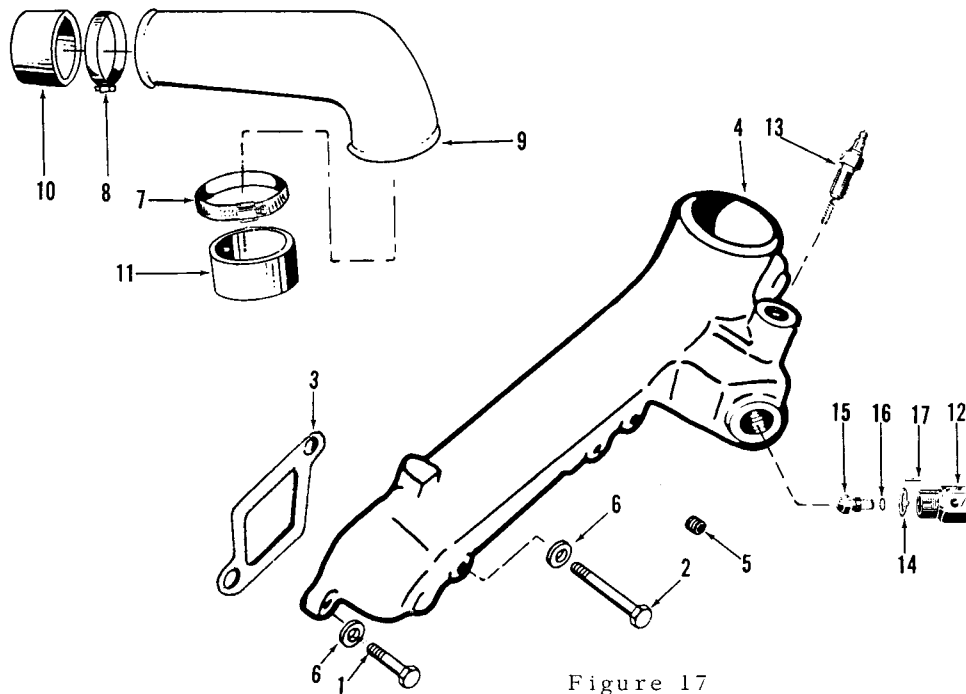


Figure 17
INTAKE MANIFOLD AND CONNECTION

Part Number	Part Name	No. Req.	Fig. No.	Ref. No.	Part Number	Part Name	No. Req.	Fig. No.	Ref. No.
MANIFOLD					GLOWPLUG				
S-103-D	Capscrew	3	17	1	125880	Adapter	1	17	12
S-199-B	Capscrew	3	17	2	68139	Elbow	1		
70851	Gasket	3	17	3	67946	Gasket	1		
145780	Manifold	1	17	4	68812	Glowplug	1	17	13
S-911-B	Plug pipe	2	17	5	118273	Gasket, glow plug	1		
S-679	Washer	6	17	6	68178-1	Lockplate, nozzle	1	17	14
					69215	Nozzle	1	17	15
					68061-A	"O" ring	1	17	16
					43468	Pin, groove	1	17	17
CONNECTION									
43828-F	Clamp	2	17	7					
43829-C	Clamp	2	17	8					
129728	Connection	1	17	9					
67185	Hose	1	17	10					
104296	Hose	1	17	11					

PARTS INDENTED ARE INCLUDED IN THE PART UNDER WHICH THEY ARE INDENTED

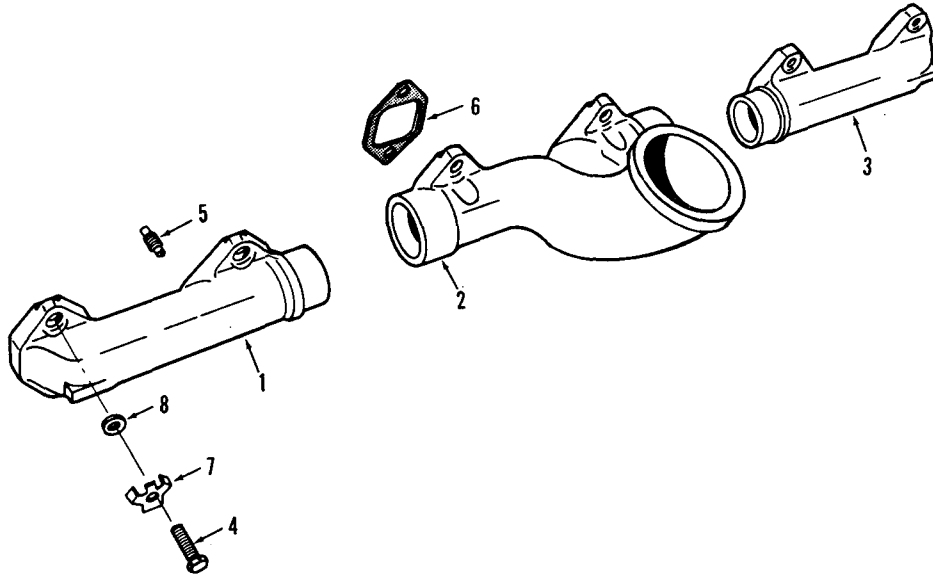


Figure 18
EXHAUST MANIFOLD

Part Number	Part Name	No. Req.	Fig. No.	Ref. No.	Part Number	Part Name	No. Req.	Fig. No.	Ref. No.
150498	Manifold, exhaust	1	18	1					
146528	Manifold, exhaust	1	18	2					
150497	Manifold, exhaust	1	18	3					
S-103-D	Capscrew	12	18	4					
146891	Dowel, manifold	3	18	5					
147339	Gasket, manifold	6	18	6					
109003	Lockplate	12	18	7					
108976	Washer	12	18	8					

PARTS INDENTED ARE INCLUDED IN THE PART UNDER WHICH THEY ARE INDENTED

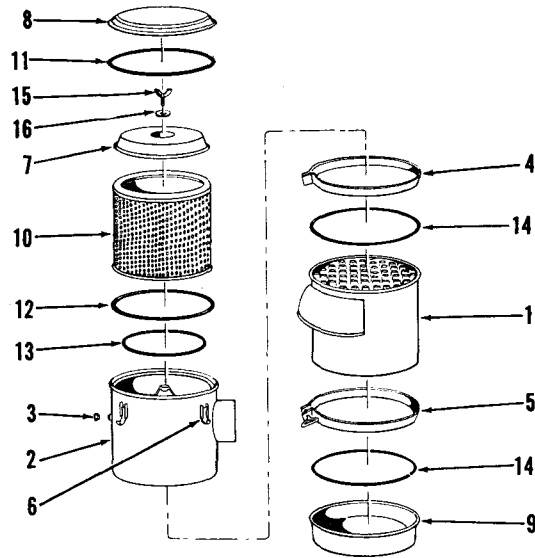


Figure 19
AIR CLEANER

Part Number	Part Name	No. Req.	Fig. No.	Ref. No.	Part Number	Part Name	No. Req.	Fig. No.	Ref. No.
151609	Cleaner, air (14" dia.)	1							
151801	Body, lower	1	19	1					
150759	Body, upper	1	19	2					
150768	Cap, restriction	1	19	3					
150763	Clamp, body	1	19	4					
150771	Clamp, cup	1	19	5					
150767	Clip, cover	1	19	6					
150757	Cover, inner	1	19	7					
133757	Cover assembly	1	19	8					
150772	Cup assembly	1	19	9					
150756	Element	1	19	10					
150747	Gasket, cover	1	19	11					
150758	Gasket, inner cover	1	19	12					
150766	Gasket, element	1	19	13					
133763	Gasket, body	2	19	14					
152792	Screw	1	19	15					
152793	Washer	1	19	16					
125741	Clamp, "T" bolt (6" dia.)	1							
125740	Clamp, "T" bolt (4 1/2" dia.)	3							
103807	Hose (4" dia.)	1							
151613	Reducer, rubber	1							
66079	Strap	2							

PARTS INDENTED ARE INCLUDED IN THE PART UNDER WHICH THEY ARE INDENTED

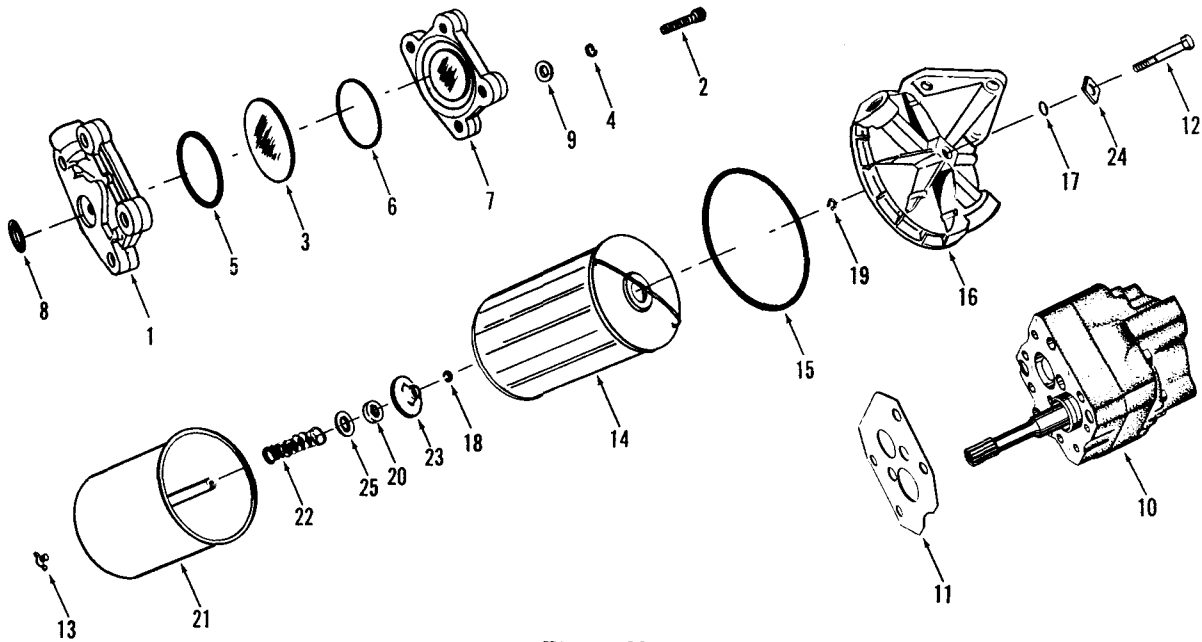


Figure 20
FUEL PUMP DAMPER, GEAR PUMP and FILTER

Part Number	Part Name	No. Req.	Fig. No.	Ref. No.	Part Number	Part Name	No. Req.	Fig. No.	Ref. No.
PT FUEL SYSTEM					BM-90270	Fuel Supply Gear Pump	1	20	10
Each Cummins PT Fuel Pump is calibrated to obtain the best performance and fuel economy for your engine. Your Cummins Distributor or Dealer has the special tools required for complete rebuild and calibration. Caution: do not disturb the fuel pressure settings or the throttle screw settings, as serious damage to your engine may result.					139290	Pump, gear 3/4" (RH)	1	20	11
Only PT Fuel System parts which can be replaced without pump calibration are listed here. Your Cummins Distributor will record the specific part number of your complete PT Fuel Pump in the front of this book.						Gasket, pump			
						Fuel Filter			
					151940	Filter, fuel	1		
					121960	Capscrew	1	20	12
					S-962-E	Drain cock	1	20	13
					141986	Decal	1		
					139097	Element (FF-108)	1	20	14
					151881	Gasket	1	20	15
					251128	Head	1	20	16
					134736	"O" Ring	1	20	17
					251131	Ring, grip	1	20	18
					135169	Ring, grip	1	20	19
					151884	Seal, pilot	1	20	20
					251091	Shell and post	1	20	21
					151885	Spring	1	20	22
					151920	Support, element	1	20	23
					251081	Washer, square	1	20	24
					S-658	Washer, plain	1	20	25
					129866	Connection, straight	1		
					129859	Connection, elbow	1		
					129858	"O" Ring	1		
Fuel Pump Damper									
BM-76340	Damper, fuel	1	20						
153336	Body, damper	1	20	1					
S-170-C	Capscrew	2	20	2					
139834	Diaphragm	1	20	3					
S-698	Lockwasher	2	20	4					
139988	"O" Ring	1	20	5					
100099	"O" Ring	1	20	6					
153338	Plate, damper	1	20	7					
151900	Seal, damper to gear pump	1	20	8					
70704	Washer	2	20	9					
160514	Washer, nylon	1							

PARTS INDENTED ARE INCLUDED IN THE PART UNDER WHICH THEY ARE INDENTED

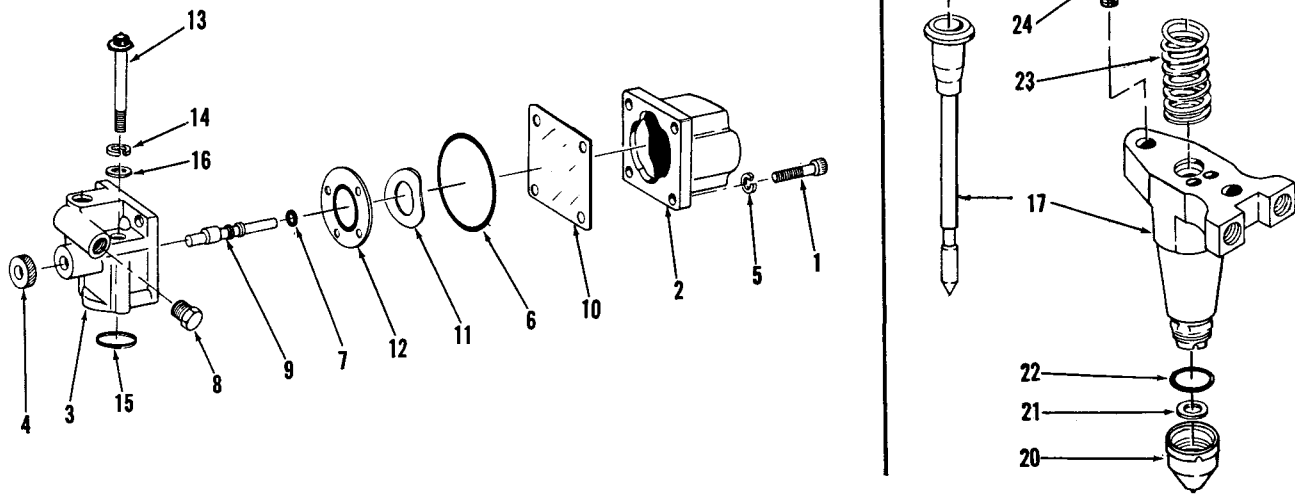


Figure 21
FUEL SHUTDOWN VALVE and INJECTOR

Part Number	Part Name	No. Req.	Fig. No.	Ref. No.	Part Number	Part Name	No. Req.	Fig. No.	Ref. No.
BM-69973	SHUTDOWN VALVE					INLET and DRAIN CONNECTIONS			
S-1214	Valve, shutdown (12 volt)	1							
134072	Capscrew, coil to housing	4	21	1					
129826	Coil assembly	1	21	2	BM-31308	Connection, inlet	6		
129838	Housing, valve	1	21	3	BM-31309	Connection, drain	6		
S-607	Knob, override	1	21	4	9426-2	Gasket, copper	12		
129888	Lockwasher	4	21	5	70854	Gasket, rubber	12		
114791	"O" ring, coil to housing	1	21	6	70847	Retainer	12		
70295	"O" ring, shaft	1	21	7	70856	Spring	12		
143679	Plug, pipe	1	21	8		INJECTOR			
129839	Shaft, override	1	21	9					
129768	Shield, fuel	1	21	10					
129827	Spring	1	21	11	BM-71636	Injector assembly	6		
171546	Valve	1	21	12	BM-71819	Body and plunger (131590)	6	21	17
S-698	Capscrew	2	21	13	146814	Link	6	21	18
154087	Lockwasher	2	21	14	148504	Sleeve	6	21	19
67684	"O" ring	1	21	15	BM-54732	Cup, injector (125145)	6	21	20
	Washer, plain	2	21	16	62410	Gasket, cup	6	21	21
					70775	"O" ring, cup	6	21	22
					9337	Spring, injector	6	21	23
					S-165	Capscrew	12	21	24
	FUEL TUBING								
117179	Manifold, drain	1							
BM-62740	Manifold, supply	1							
144727	Tube, shut-off valve to supply manifold	1							
163646	Clip	2							
70817	Connection, straight	1							

PARTS INDENTED ARE INCLUDED IN THE PART UNDER WHICH THEY ARE INDENTED

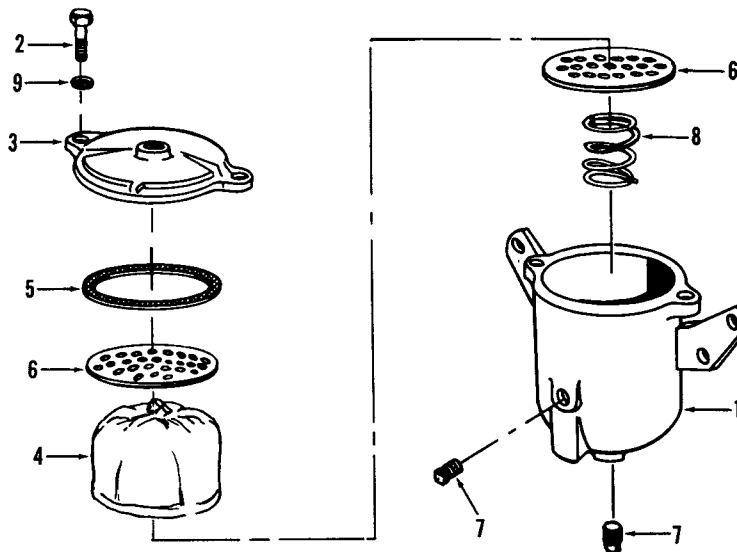


Figure 23
CORROSION RESISTOR

Part Number	Part Name	No. Req.	Fig. No.	Ref. No.	Part Number	Part Name	No. Req.	Fig. No.	Ref. No.
132716	Resistor, corrosion	1							
132717	Body	1	23	1					
70223	Capscrew, cover to body	2	23	2					
132718	Cover	1	23	3					
135970	Decal	1							
132732	Element	1	23	4					
132730	Gasket, cover to body	1	23	5					
132719	Plate	2	23	6					
139090	Plug, pipe	2	23	7					
132731	Spring	1	23	8					
70233	Washer	2	23	9					
142058	Adapter	1							
144778	Bracket	1							
S-921-D	Bushing	1							
S-115	Capscrew	2							
S-172-B	Capscrew	2							
43828	Clamp, hose	4							
134325	Connector, elbow	1							
S-913-A	Elbow	1							
144027	Hose	2							
S-604	Lockwasher	2							
S-605	Lockwasher	2							
157098	Valve, shut off	1							
142059	Valve, shut off	1							
S-626	Washer	2							

PARTS INDENTED ARE INCLUDED IN THE PART UNDER WHICH THEY ARE INDENTED

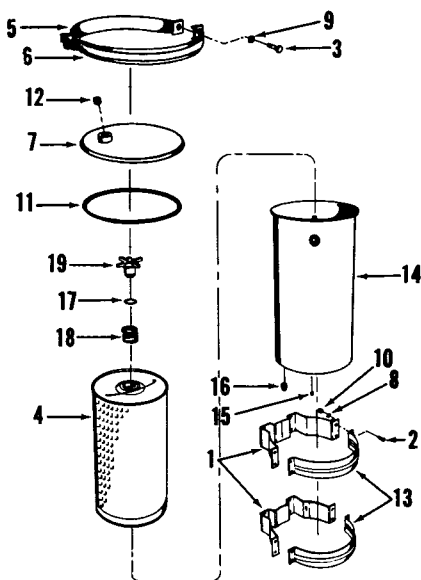


Figure 24
LUBRICATING OIL BY-PASS FILTER

Part Number	Part Name	No. Req.	Fig. No.	Ref. No.	Part Number	Part Name	No. Req.	Fig. No.	Ref. No.
159706	Filter, lubricating oil	1							
145664	Bracket, mounting	2	24	1					
70188	Capscrew, bracket	8	24	2					
70223	Capscrew, coupling half	2	24	3					
136750	Cartridge	1	24	4					
150038	Coupling half with nuts	1	24	5					
150039	Coupling half, cover	1	24	6					
150040	Cover	1	24	7					
70189	Lockwasher, bracket	8	24	8					
70194	Lockwasher, coupling half	2	24	9					
70299	Nut, bracket	8	24	10					
164159	"O" ring, cover	1	24	11					
S-908	Plug, cover	1	24	12					
145665	Strap, mounting	2	24	13					
250720	Shell, filter	1	24	14					
157152	Decal, filter	1							
131911	Orifice, plug	1	24	15					
S-908	Plug, drain	1	24	16					
250719	Support, upper	1							
116029	"O" ring, support	1	24	17					
150037	Spring, hold down	1	24	18					
150036	Support, upper	1	24	19					

PARTS INDENTED ARE INCLUDED IN THE PART UNDER WHICH THEY ARE INDENTED

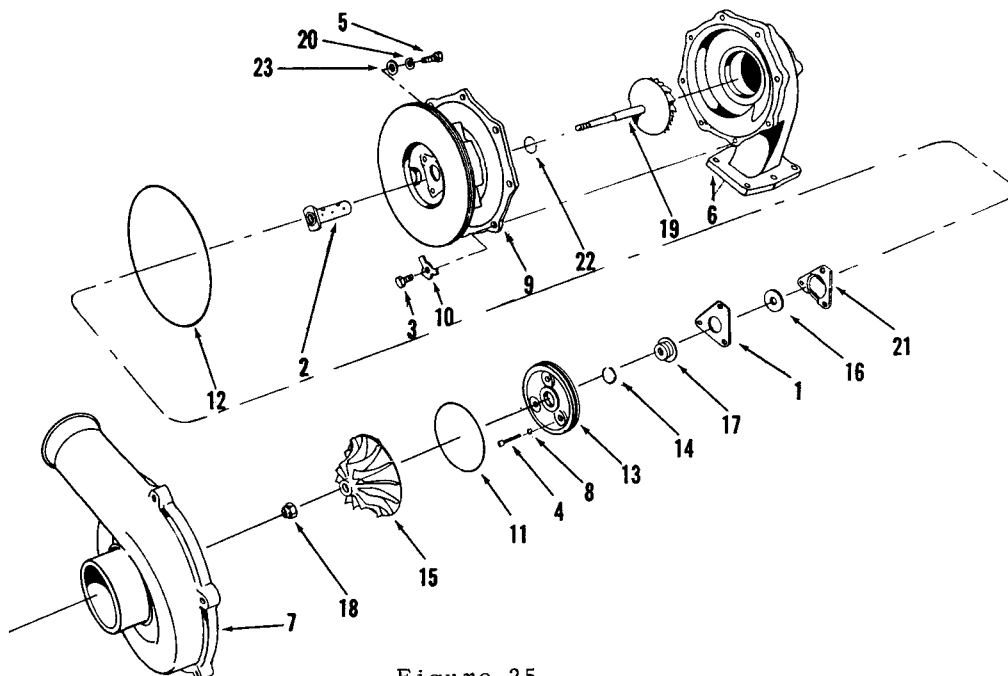


Figure 25
TURBOCHARGER T-350

Part Number	Part Name	No. Req.	Fig. No.	Ref. No.	Part Number	Part Name	No. Req.	Fig. No.	Ref. No.
	TURBOCHARGER T-350					MOUNTING PARTS			
BM-78045	Turbocharger assembly	1			43764	Adapter, hose	1		
154040	Bearing assembly, thrust	1	25	1	S-982	Bushing	1		
154030	Bearing, thrust	1	25	2	107460	Clamp	1		
105737	Capscrew	8	25	3	68425	Clip	3		
140626	Capscrew, self-locking	3	25	4	BM-63242	Connection, exhaust outlet	1		
S-107	Capscrew	6	25	5					
134997	Casing, turbine	1	25	6	134444	Capscrew	5		
156787	Casing, compressor	1	25	7	134426	Gasket	1		
8078	Gasket	3	25	8	131480	Lockplate	5		
154588	Bearing, housing	1	25	9	BM-63241	Tube and flange	1		
131480	Lockplate	8	25	10	S-972	Elbow	1		
128920	"O" Ring	1	25	11	S-980	Elbow	1		
128921	"O" Ring	1	25	12	S-1040-A	Elbow	1		
140284	Plate, oil seal	1	25	13	142429	Elbow	1		
S-910-B	Plug, pipe	1			114201	Gasket	1		
128919	Ring, Seal	1	25	14	HS0602640SS	Hose	1		
BM-71003	Rotor assembly turbo-charger	1			HS0601340MS	Hose	1		
*	Wheel, compressor	1	25	15	HS1002700SS	Hose	1		
*	Washer	1	25	16	107440	Locknut	6		
140286	Sleeve	1	25	17	S-912-B	Nipple	1		
*	Nut	1	25	18	109660	Nipple	1		
*	Wheel and shaft assembly	1	25	19	S-904-C	Nipple	1		
S-605	Lockwasher	6	25	20	60724	Spacer	1		
154015	Retainer	1	25	21	107709	Stud	6		
128936	Nameplate	1							
146411	Ring, seal	1	25	22					
S-2267	Screw	1							
S-626	Washer	6	25	23					

* Sold only in balanced rotor assembly.

PARTS INDENTED ARE INCLUDED IN THE PART UNDER WHICH THEY ARE INDENTED

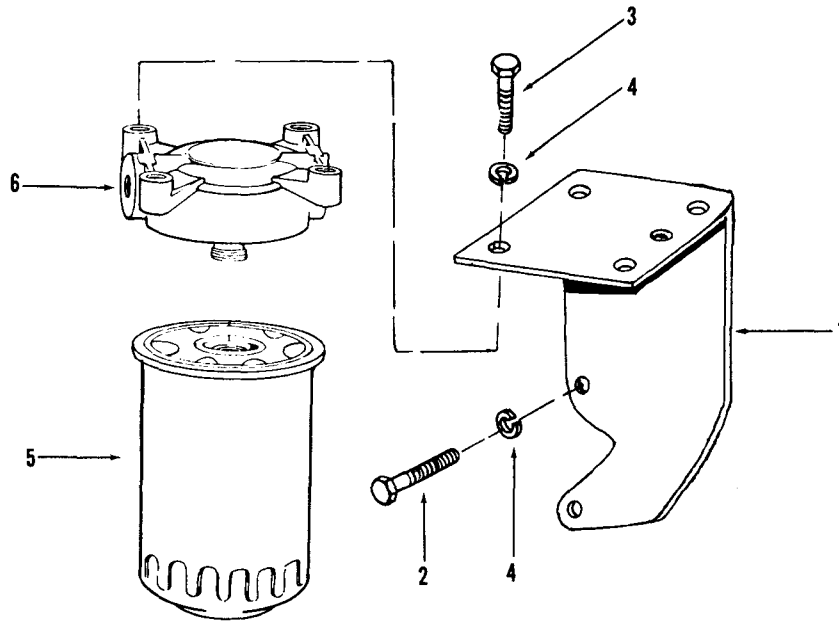


Figure 26
TURBOCHARGER OIL FILTER

Part Number	Part Name	No. Req.	Fig. No.	Ref. No.	Part Number	Part Name	No. Req.	Fig. No.	Ref. No.
153755	Bracket, turbocharger oil filter	1	26	1					
S-111	Capscrew	2	26	2					
S-112	Capscrew	4	26	3					
S-604	Lockwasher	6	26	4					
BM-75654	Filter, oil turbocharger	1							
152499	Filter, oil	1	26	5					
153717	Head, filter	1	26	6					

PARTS INDENTED ARE INCLUDED IN THE PART UNDER WHICH THEY ARE INDENTED

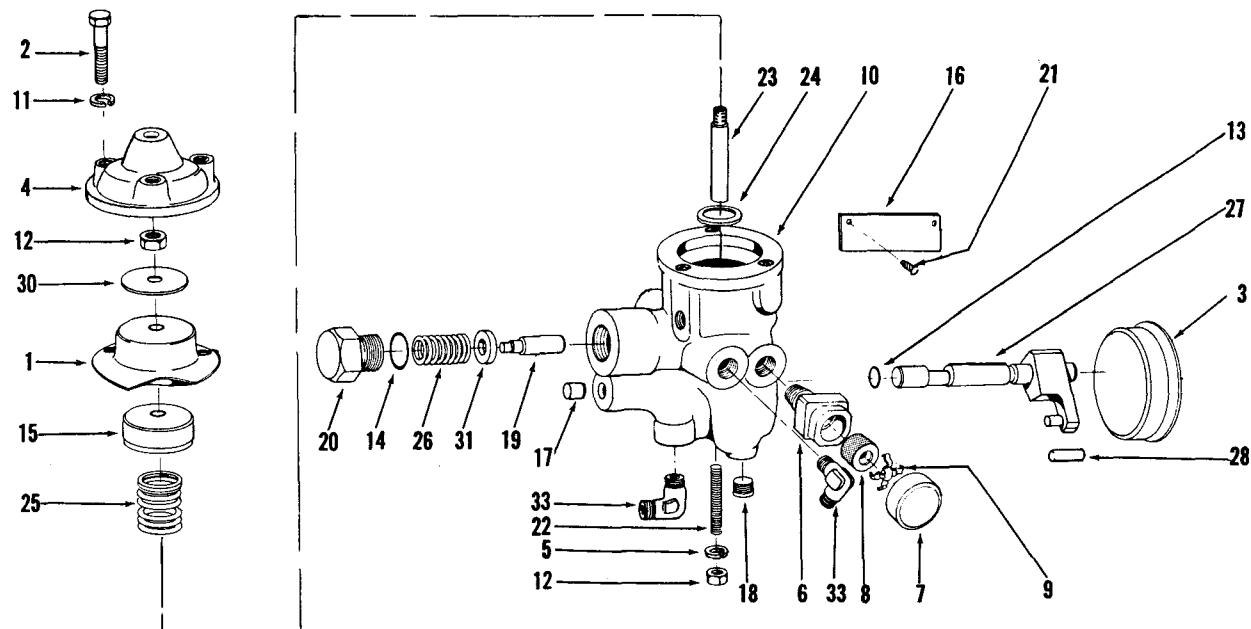


Figure 27
ANEROID CONTROL

Part Number	Part Name	No. Req.	Fig. No.	Ref. No.	Part Number	Part Name	No. Req.	Fig. No.	Ref. No.
BM-69579-F	Control, aneroid	1			143950	Adapter, hose	2		
114739	Bellows	1	27	1	114851	Bracket	1		
S-1218	Capscrew, cover to housing	3	27	2	S-109	Capscrew	1		
114773	Cover, control	1	27	3	S-112	Capscrew	2		
114947	Cover, bellows	1	27	4	68139	Elbow, hose	1		
70815	Dyna-seal, adjusting screw	1	27	5	69318	Elbow, street	1		
BM-55534	Filter, air	1			144372	Elbow, hose	2	27	33
125026	Body, filter	1	27	6	HS0501200SS	Hose, control	2		
125027	Cap, filter	1	27	7	HS0401000MS	Hose, control	1		
118020	Element	1	27	8	S-604	Lockwasher	4		
124996	Spring, filter	1	27	9	S-911-B	Plug, pipe	1		
140357	Housing, control	1	27	10					
S-600	Lockwasher, cover to housing	3	27	11					
108074	Nut, bellows actuating shaft	2	27	12					
114791	"O" Ring, plunger	1	27	13					
154087	"O" Ring, spring retainer	1	27	14					
114755	Piston, bellows	1	27	15					
105375	Plate, name	1	27	16					
114765	Plug, plunger	2	27	17					
S-911-B	Plug, pipe, bellows cover	1	27	18					
140414	Plunger, pressure	1	27	19					
114764	Retainer, spring	1	27	20					
S-2267	Screw, nameplate	2	27	21					
109918	Screw, adjusting	1	27	22					
115033	Shaft, bellows actuating	1	27	23					
114921	Shim, spring	AR	27	24					
124033	Spring, bellows	1	27	25					
120073	Spring, pressure valve	1	27	26					
BM-69381	Valve, lever and pin	1							
115034	Lever	1	27	27					
114940	Pin	1	27	28					
140358	Valve	1	27	29					
114754	Washer, bellows retainer	1	27	30					
114795	Washer, pressurizing valve	1	27	31					

PARTS INDENTED ARE INCLUDED IN THE PART UNDER WHICH THEY ARE INDENTED

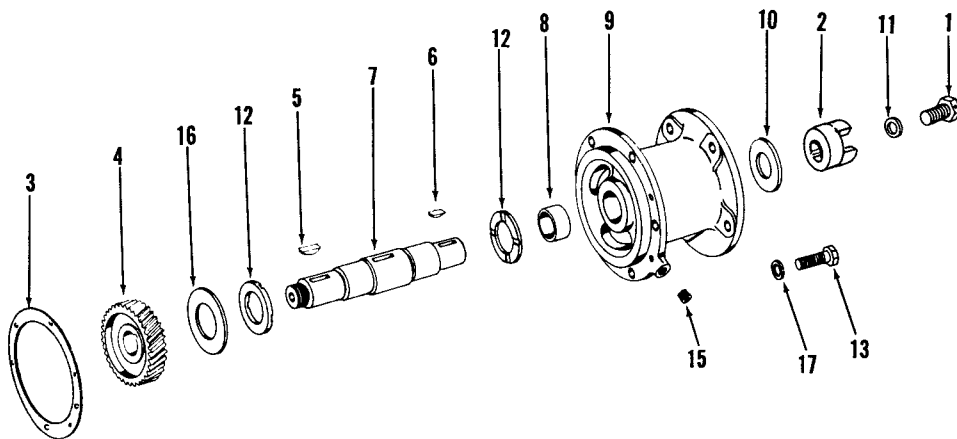


Figure 28
FUEL PUMP DRIVE

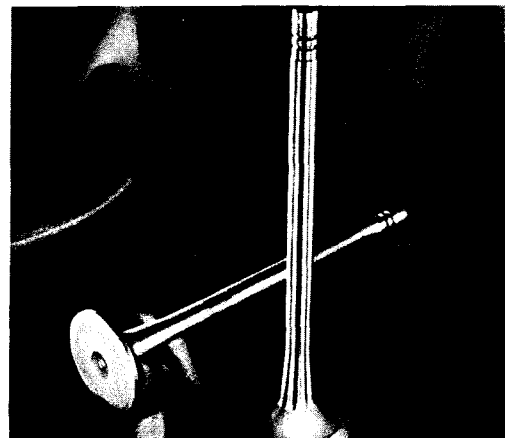
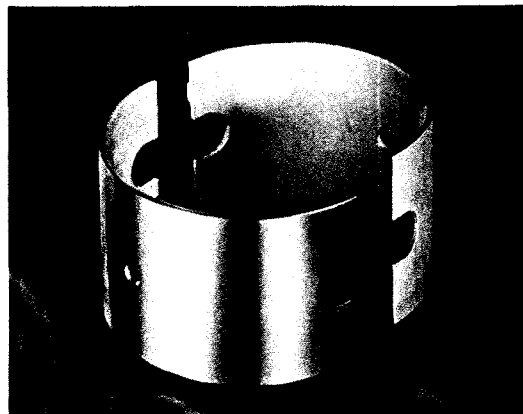
Part Number	Part Name	No. Req.	Fig. No.	Ref. No.	Part Number	Part Name	No. Req.	Fig. No.	Ref. No.
BM-94789	Drive, fuel pump	1							
129510	Capscrew	1	28	1					
158826	Coupling, fuel pump drive half	1	28	2					
153218	Gasket	1	28	3					
159236	Gear, accessory drive	1	28	4					
S-301	Key	2	28	5					
S-316	Key	1	28	6					
170662	Shaft	1	28	7					
BM-77360	Support, accessory drive	1							
139810	Bushing, compressor drive	1	28	8					
147328	Support, compressor	1	28	9					
116390	Washer, clamping	1	28	10					
170664	Washer, plain	1	28	11					
116389	Washer, thrust	2	28	12					
S-119	Capscrew	1	28	13					
67857	Dowel	1							
S-911-B	Plug, pipe	1	28	15					
139796	Slinger, oil	1	28	16					
S-605	Washer	1	28	17					

PARTS INDENTED ARE INCLUDED IN THE PART UNDER WHICH THEY ARE INDENTED

Part Number	Part Name	No. Req.	Fig. No.	Ref. No.	Part Number	Part Name	No. Req.	Fig. No.	Ref. No.
FLYWHEELS, RING GEARS AND FLYWHEEL HOUSINGS									
Flywheel, flywheel housings and ring gears have been designed to adapt the Cummins Diesel to hundreds of different installations. For this reason, these assemblies are not listed.									
Your Cummins Distributor will record flywheel, flywheel housing and ring gear part numbers in the front of this book.									
	GASKET SETS								
BM-50020	Engine gasket set	1							
BM-64713	Cylinder head gasket set	1							
BM-68356	Fuel pump gasket set	1							
ELECTRICAL EQUIPMENT									
Electrical equipment is not manufactured by the Cummins Engine Company, Inc. Complete service for electrical equipment may be obtained from the manufacturers, The Delco-Remy Company at Anderson, Indiana, The Leece-Neville Company at Cleveland, Ohio, or from their service stations. Address of nearest service station may be obtained from the manufacturer.									
43813	Generator	1							
43812	Motor, starting	1							
42796	Regulator, voltage	1							
102846	Switch, ignition	1							
118847	Switch, magnetic	1							
66733	Gauge, oil pressure	1							
101077	Pulley, generator	1							
70885	Belt, generator	1							
GENERATOR MOUNTING									
160155	Brace, generator bracket	1							
139394	Bracket, front	1							
160606	Bracket, rear	1							
103023	Capscrew	3							
S-150	Capscrew	1							
S-103-D	Capscrew	1							
S-140	Capscrew	1							
S-112	Capscrew	1							
S-145	Capscrew	1							
S-155	Capscrew	2							
42568	Fan	1							
117646	Link, adjusting	1							
S-610	Lockwasher	5							
S-604	Lockwasher	2							
S-606	Lockwasher	4							
S-200	Nut	1							
S-217	Nut	2							
62618	Spacer	1							
S-1319	Screw	4							
S-622	Washer, plain	2							
S-601	Washer, plain	1							
S-602	Washer, plain	1							
S-608	Washer, plain	2							
S-670	Washer, plain	1							
STARTER MOUNTING									
S-103-A	Capscrew	3							
S-603	Lockwasher	3							

PARTS INDENTED ARE INCLUDED IN THE PART UNDER WHICH THEY ARE INDENTED

FOR PERFORMANCE YOU CAN COUNT ON



SPECIFY CUMMINS REPLACEMENT PARTS