

# **Cummins Parts Catalog**

Model: C-105. C-140

Bulletin: 967093

## Parts Ordering for: C-105, C-140

Genuine Cummins Parts and service facilities are world-wide. There are more than 1100 Cummins Sales and Service locations in the principal cities of the United States and Canada, and more than 350 Sales and Service locations situated elsewhere throughout the free world. Each distribution outlet is thoroughly equipped with technical data, factory-trained mechanics, modern equipment and a full, adequate stock of Genuine Cummins Parts.

For quicker and better service, your parts requirements should be ordered from your nearest Cummins Distributor or Dealer. At any of the locations prompt, intelligent, courteous service is a basic trademark. Each is ready and eager to help in every possible way through personal contact or through the mail — at your convenience.

The satisfactory ordering and receiving of parts by the purchaser is greatly dependent upon the proper use of available information. In order that all avoidable errors may be eliminated, the following instructions are offered as the purchaser's guide:

1. Write your order clearly, using a typewriter if possible.

2. Be sure to list the correct part number. If in doubt as to the correct part number, state the model and serial number of the engine on which the part is to be used. Part numbers are usually located in various places on the part itself.
3. When possible, arrange your purchase order in part number numerical sequence.
4. Always specify shipping instructions — "Best Way" is satisfactory if you have no preference.
5. State your company name and shipping address clearly.

Genuine Cummins Parts mean QUALITY! They're designed and engineered to fit best in your Cummins Diesel. Each part is made of the highest quality material — on the most accurate of machines — by the top craftsmen of the trade.

You can be sure a Genuine Cummins Part will fit better — do the job better — lessen the chances of costly breakdown. When you buy replacement parts, buy quality. Buy Genuine Cummins Parts!

YOU OWN THE BEST . . . REPAIR WITH THE BEST

COPYRIGHT 1966

PRICE \$ .25

## Special Parts

This Parts Catalog includes those parts that are normally used on our standard engine model.

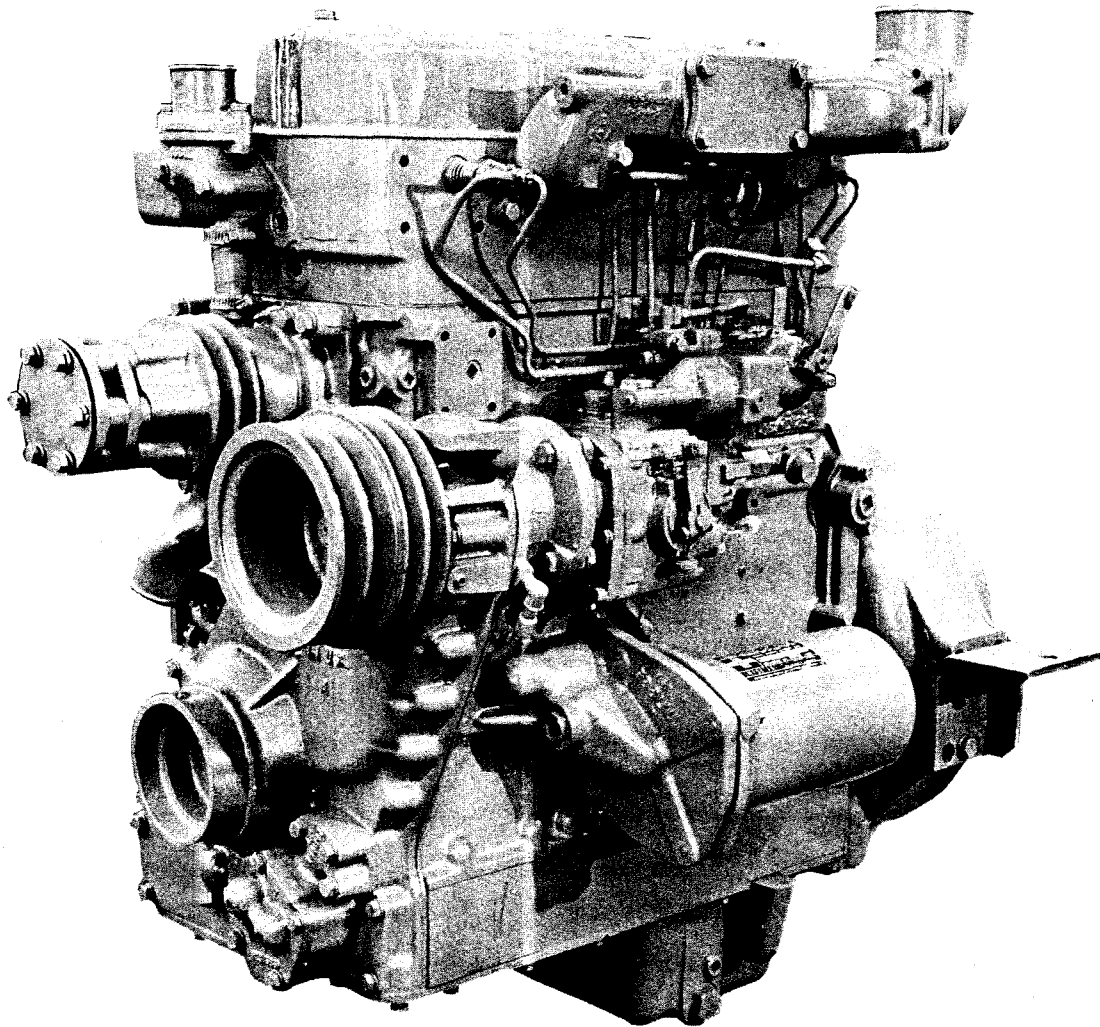
Special Parts peculiar to engine serial No. \_\_\_\_\_ are listed on the form below. To make certain you have ordered correct parts, refer to this form before submitting Parts Order.

[illegible]

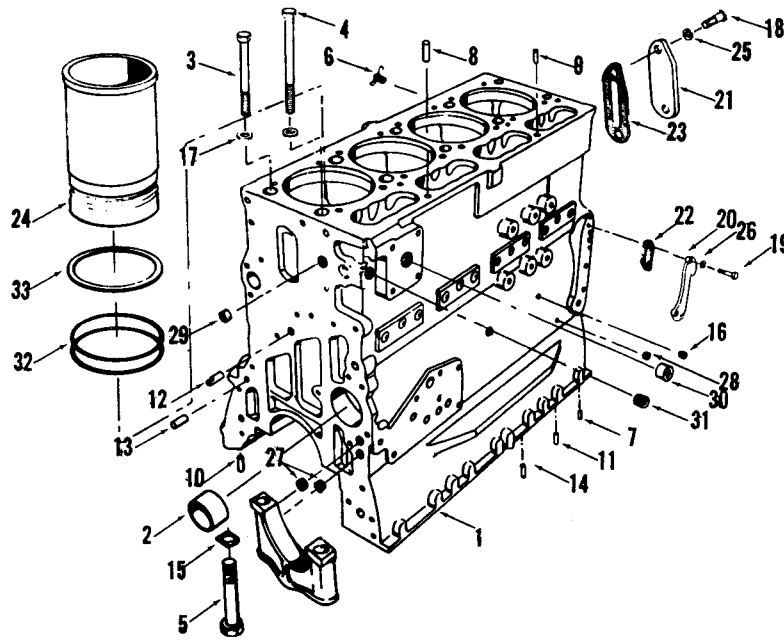
Cummins Distributor \_\_\_\_\_

# Table of Contents

Cylinder Block and Cylinder Liner - - - - -	1
Crankshaft and Main Bearing Shells - - - - -	2
Connecting Rod, Piston and Rings - - - - -	3
Counterbalancer - - - - -	4
Rear Cover and Camshaft - - - - -	5
Gear Case Cover - - - - -	6
Cylinder Head - - - - -	7
Rocker Levers - - - - -	8
Push Rods and Tappets - - - - -	9
Cylinder Head Cover and Breather - - - - -	10
Oil Pan - - - - -	11
Lubricating Oil Filter (Paper Element Type) - - - - -	12
Lubricating Oil Filter (Bag Type) - - - - -	13
Lubricating Oil Cooler - - - - -	14
Lubricating Oil Pump - - - - -	15
Water Pump and Accessory Drive Pulley - - - - -	16
Thermostat Housing - - - - -	17
Radiator, Fan Guard, Fan and Spacer - - - - -	18
Air Cleaner - - - - -	19
Air Intake Manifold and Illustration - - - - -	-20 & 21
Exhaust Manifold - - - - -	22
Fuel Pump Drive - - - - -	23
PT Fuel System - - - - -	
Fuel Pump Damper, Gear Pump and	
Fuel Filters - - - - -	-24 & 25
Shutdown Valve, Injector, Fuel Tubing	
and Fuel Inlet and Drain Connection - - - - -	-26 & 27
Corrosion Resistor - - - - -	28
Aneroid Control - - - - -	29
Turbocharger T-350 - - - - -	30
Turbocharger Oil Filter - - - - -	31
Air Compressor - - - - -	32
Flywheel, Ring Gear and Front Engine	
Support - - - - -	33
Instrument Panel and Illustration - - - - -	34 & 35
Electrical Equipment - - - - -	36



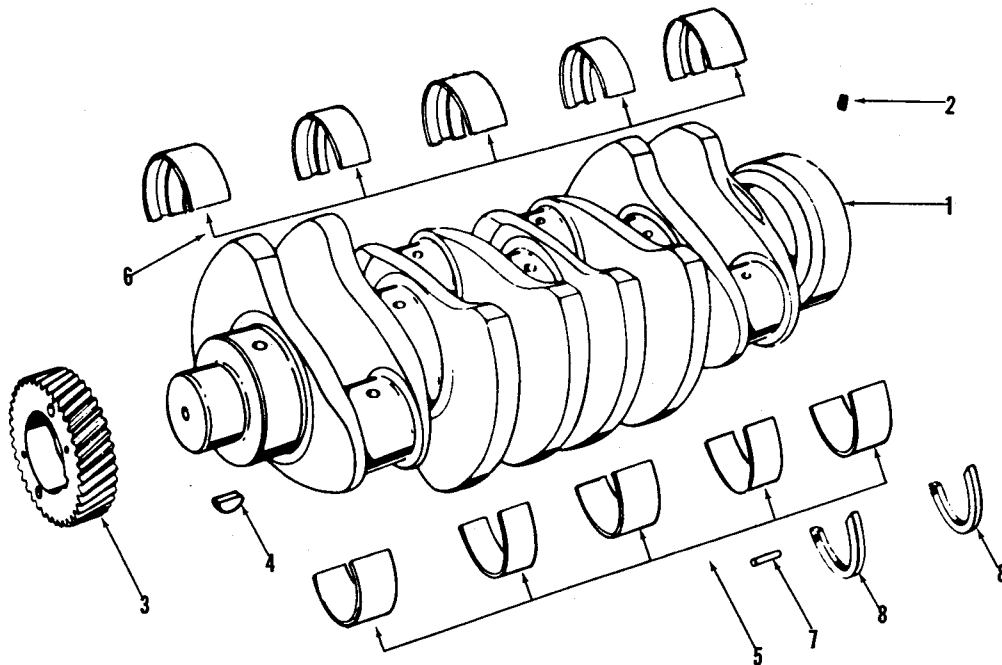
TYPICAL CUMMINS 4 CYLINDER "C" SERIES DIESEL ENGINE



CYLINDER BLOCK

Part Number	Part Name	No. Req.	Ref. No.	Part Number	Part Name	No. Req.	Ref. No.
GROUP A C-105, C-105-IP C-105-BI				126299	Guide, tappet	12	
				112851	Liner, cylinder	4	24
				S-604	Lockwasher (3/8")	2	25
BM-72247	Block, cylinder (135190)	1	1	S-605	Lockwasher (5/16")	4	26
100673	Bushing, camshaft	4	2	159379	Plate, name	1	
122936	Capscrew, cylinder head (short)	5	3	67622	Plug, pipe	4	27
122937	Capscrew, cylinder head (long)	5	4	69901	Plug, pipe	3	28
104293	Capscrew, main bearing	10	5	S-910-B	Plug, pipe, oil gallery	2	29
107947	Cock, drain	1	6	S-915-A	Plug, pipe (1/2")	1	30
120830	Dowel, main bearing cap	2	7	S-908	Plug, pipe (3/8")	2	31
68445	Dowel, cylinder head to block	1	8	S-995	Plug, pipe, connection	2	
113937	Dowel, cylinder head to block	1	9	112847	Ring, cylinder packing, liner	8	32
68568	Dowel, oil pan to block	1	10	174316	Ring, cylinder packing, liner	4	33
70645	Dowel, oil pan to block	1	11	S-2286	Screw, name plate	4	
70653	Dowel, gear cover	1	12	127184	Washer	4	
60408	Dowel, gear cover	1	13	S-684	Washer	12	
69236	Dowel, lubricating, pump to block	2	14	64482	Wire, lock	1	
				67089	Wire, lock	4	
60488	Dowel, head to bearing support	1		GROUP B C-140			
69233	Dowel, oil line	1		Same as Group A, except:			
67857	Dowel, drive support	1					
60533	Lock plate, main bearing cap	10	15				
S-911-B	Plug, pipe, oil gallery	8	16	121687	Connection, oil transfer	1	
113995	Washer, cylinder head	10	17	159380	Nameplate	1	
				S-2267	Screw	4	
MOUNTING PARTS							
S-109	Capscrew (3/8"-16 x 7/8")	2	18	124107	Shim, liner (.007")		
S-106-A	Capscrew (5/16"-18 x 1-3/4")	4	19	124108	Shim, liner (.008")		
125744	Connection, oil transfer	1	20	124109	Shim, liner (.009")		
65473	Cover, water header end	1	21	124110	Shim, liner (.020")		
S-973	Elbow, street	1		124111	Shim, liner (.031")		
120324	Gasket, oil transfer connection	1	22				
65474	Gasket, water header cover	1	23				

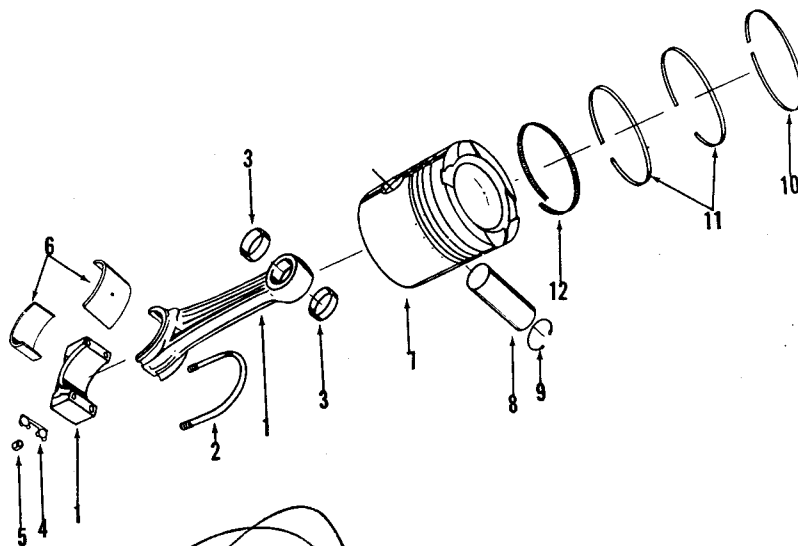
PARTS INDENTED ARE INCLUDED IN THE PART UNDER WHICH THEY ARE INDENTED



CRANKSHAFT and MAIN BEARING

Part Number	Part Name	No. Req.	Ref. No.	Part Number	Part Name	No. Req.	Ref. No.
GROUP: A All Models							
BM-76712	Crankshaft and gear (135580)	1					
BM-76711	Crankshaft and plug	1	1				
S-911-B	Plug, pipe (1/8")	4	2				
134131	Gear, crankshaft pinion	1	3				
S-331	Key, gear	1	4				
BM-44996 *	Set, main bearing shell	1					
44297	Shell, main bearing, (lower)	5	5				
43214	Shell, main bearing, (upper)	5	6				
124922	Dowel, pin	2	7				
150310	Ring, thrust	4	8				
* Main bearing and main bearing sets may be purchased in standard, .010", .020", .030", .040", undersize. When ordering bearings always state the size required.							

PARTS INDENTED ARE INCLUDED IN THE PART UNDER WHICH THEY ARE INDENTED

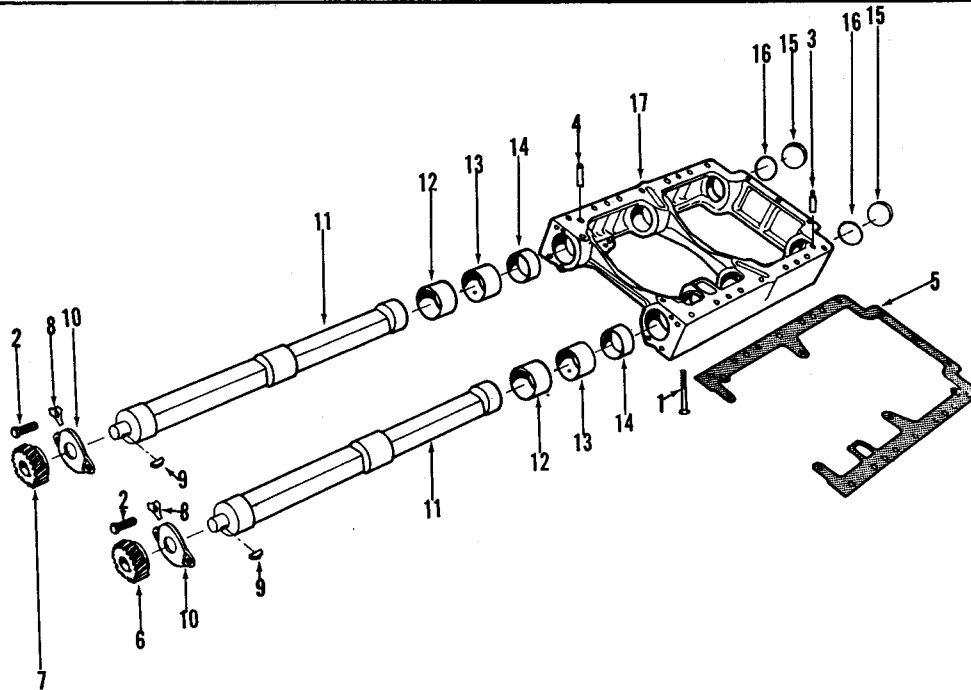


CONNECTION ROD, PISTON and RINGS

Part Number	Part Name	No. Req.	Ref. No.	Part Number	Part Name	No. Req.	Ref. No.
GROUP A C-105, C-105-IP, C-105-BI				BM-64260	Ring set, piston (standard)	1	
BM-71330	Rod, connecting(143253) (taper piston pin boss)	4	1	145150	Ring, compression	4	10
110275	Bolt, connecting rod	8	2	112880	Ring, compression	8	11
143940	Bushing, piston pin	8	3	118630	Ring, oil	4	12
60358	Lockplate, connecting rod	8	4	BM-64262	Ring set, piston (.020" oversize)	1	
S-265	Nut, connecting rod bolt	16	5	145152	Ring, compression	4	10
127730 *	Shell, connecting rod bearing	8	6	112882	Ring, compression	8	11
* Connecting rod bearing shells may be purchased in .010", .020", .030" and .040" undersize.				118632	Ring, oil	4	12
BM-73890	Piston assembly (standard)	4		BM-64263	Ring set, piston (.030" oversize)	1	
149200	Piston	4	7	145153	Ring, compression	4	10
112904	Pin, piston	4	8	112883	Ring, compression	8	11
S-16256	Ring, snap	8	9	118633	Ring, oil	4	12
BM-73892	Piston assembly (.020" oversize)	4		BM-64264	Ring set, piston (.040" oversize)	1	
149202	Piston	4	7	145154	Ring, compression	4	10
112904	Pin, piston	4	8	112884	Ring, compression	8	11
S-16256	Ring, snap	8	9	118634	Ring, oil	4	12
BM-73893	Piston assembly (.030" oversize)	4		GROUP B C-140			
149203	Piston	4	7	BM-60610	Piston assembly (standard)	1	
112904	Pin, piston	4	8	130500	Piston	4	
S-16256	Ring, snap	8	9	BM-60612	Piston assembly (.020" oversize)	1	
BM-73894	Piston assembly (.040" oversize)	4		130502	Piston	4	
149204	Piston	4	7	BM-60613	Piston assembly (.030" oversize)	1	
112904	Pin, piston	4	8	130502	Piston	4	
S-16256	Ring, snap	8	9	BM-60614	Piston assembly (.040" oversize)	1	
				130504	Piston	4	

PARTS INDENTED ARE INCLUDED IN THE PART UNDER WHICH THEY ARE INDENTED

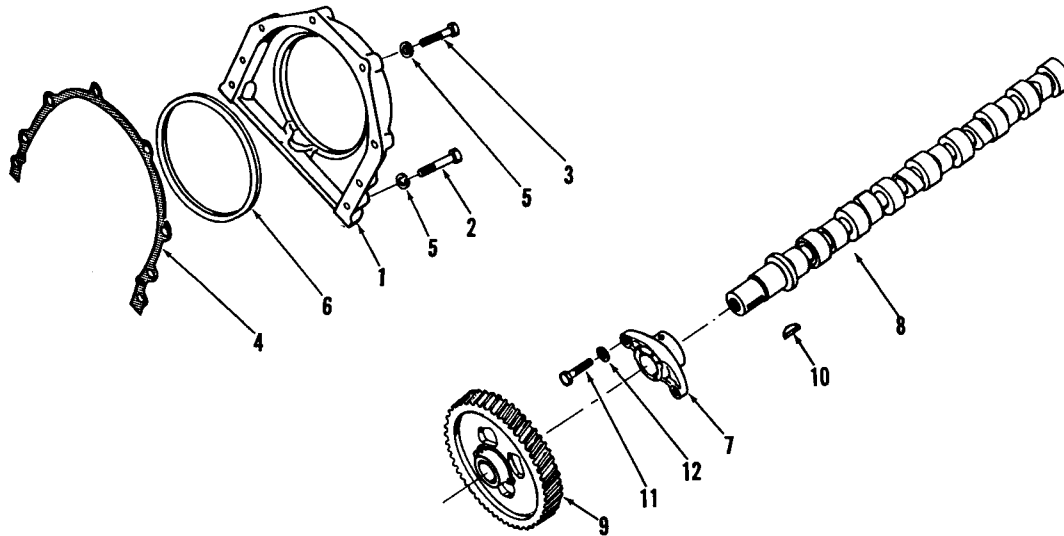




COUNTER BALANCER

Part Number	Part Name	No. Req.	Ref. No.	Part Number	Part Name	No. Req.	Ref. No.
GROUP A All Models							
BM-64259	Counterbalancer (raised)	1					
137072	Capscrew, spacer to block	4	1				
S-107	Capscrew, thrust (5/16"-18 x 3/4")	4	2				
68568	Dowel, diamond	1	3				
70645	Dowel, master	1	4				
135410	Gasket, spacer	1	5				
134350	Gear, balancer (F.P. side)	1	6				
134336	Gear, balancer (Exhaust side)	1	7				
117559	Lockplate, thrust plate	4	8				
166438	Key	2	9				
135098	Plate, thrust, balancer shaft	2	10				
132649	Shaft, balancer	2	11				
BM-74096	Spacer assembly, balancer	1					
140220	Bushing, balancer shaft (front)	2	12				
140230	Bushing, balancer shaft (middle)	2	13				
140240	Bushing, balancer shaft (rear)	2	14				
135155	Cover, balancer shaft plate	2	15				
139837	"O" ring, cover	2	16				
149248	Spacer, balancer	1	17				

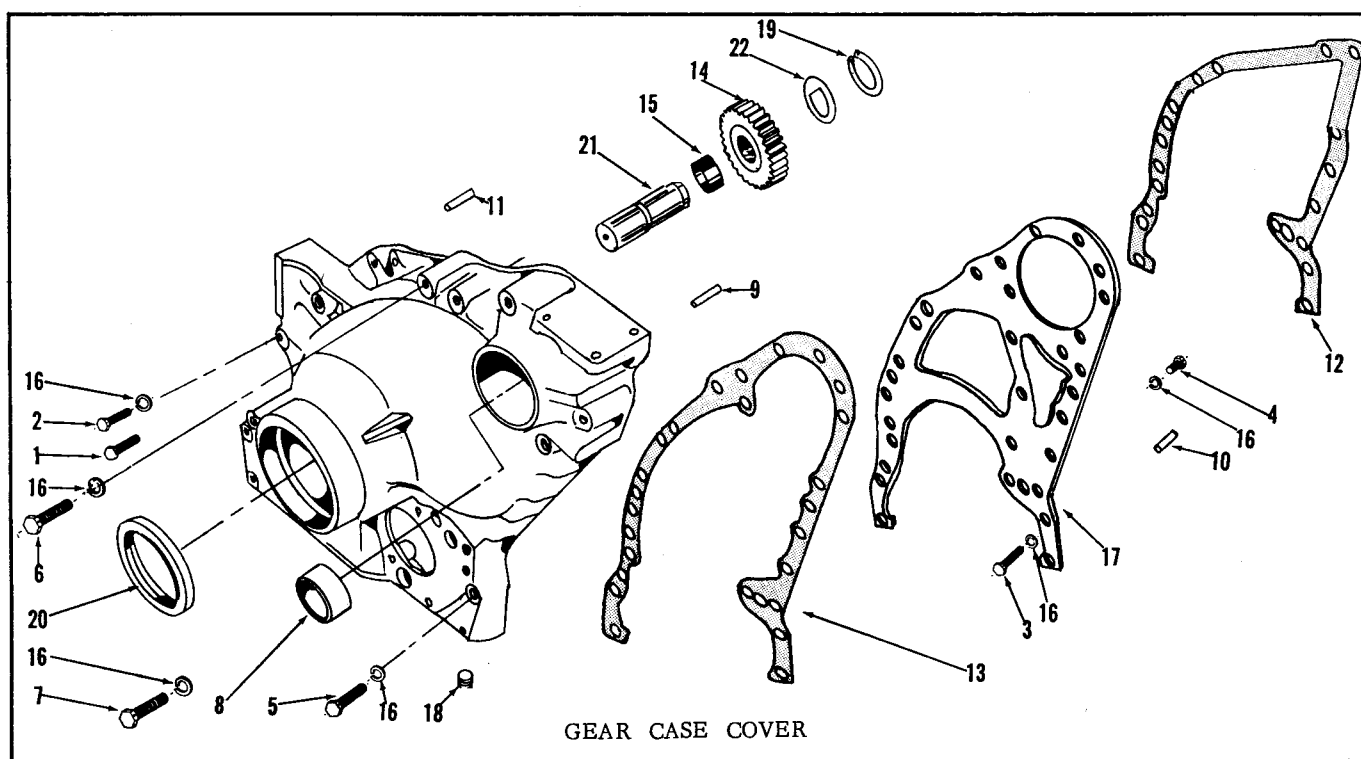
PARTS INDENTED ARE INCLUDED IN THE PART UNDER WHICH THEY ARE INDENTED



REAR COVER and CAMSHAFT

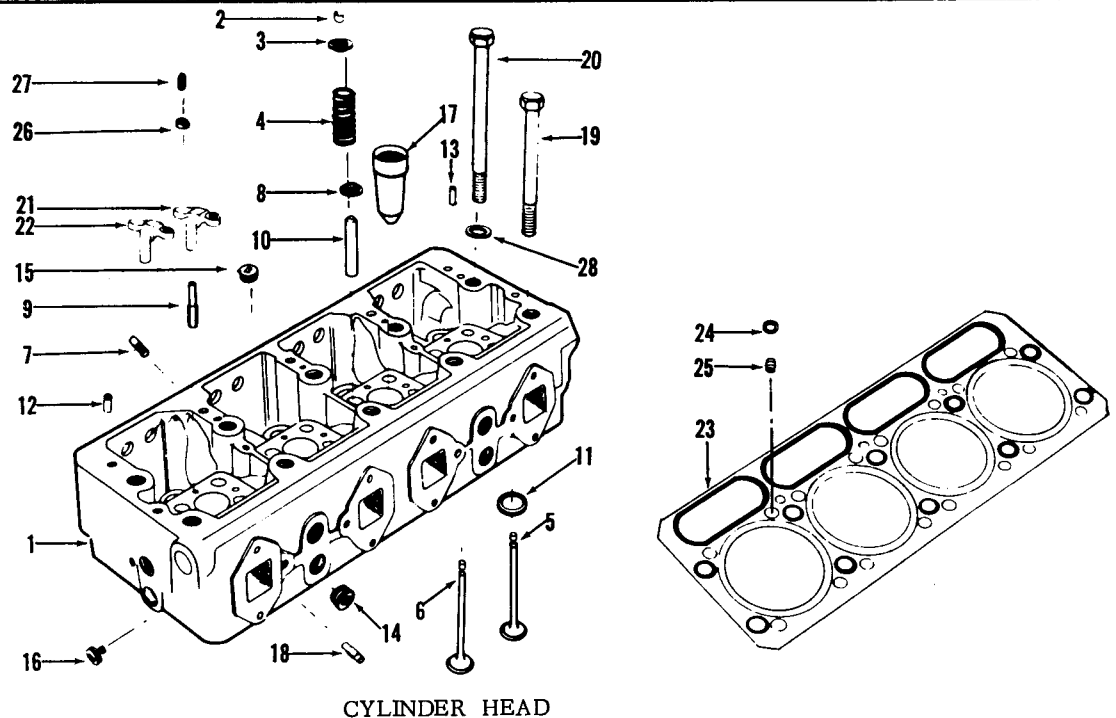
Part Number	Part Name	No. Req.	Ref. No.	Part Number	Part Name	No. Req.	Ref. No.
GROUP A All Models REAR COVER				GROUP B C-105, C-105-IP, C-105-BI CAMSHAFT			
106203	Cover, rear	1	1				
S-106-A	Capscrew (5/16"-18 x 1-3/4")	2	2	BM-66888	Camshaft assembly	1	
S-111	Capscrew (5/16"-18 x 1-1/2")		3	121720	Bearing, front camshaft	1	7
102151	Gasket, cover plate (.010")	A/R	4	112407	Camshaft	1	8
102152	Gasket, cover plate (.005")	A/R		134418	Gear, camshaft	1	9
S-605	Lockwasher (5/16")	8	5	S-302	Key, woodruff camshaft gear	1	10
141745	Seal, oil	1	6				
				MOUNTING PARTS			
				S-112	Capscrew, camshaft bearing	3	11
				S-604	Lockwasher, camshaft bearing capscrew (3/8")	3	12
				GROUP C C-140			
				Same as Group B except:			
				134088	Key	1	10

PARTS INDENTED ARE INCLUDED IN THE PART UNDER WHICH THEY ARE INDENTED



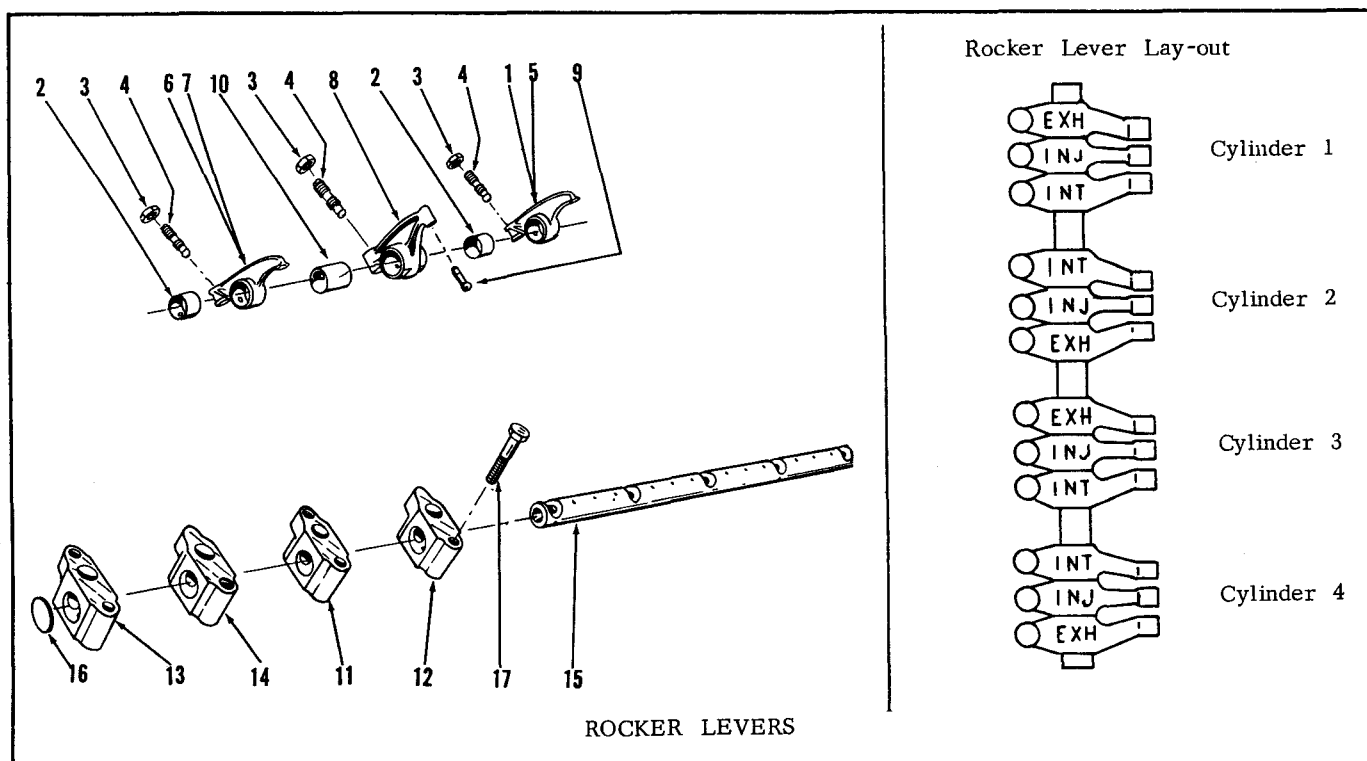
Part Number	Part Name	No. Req.	Ref. No.	Part Number	Part Name	No. Req.	Ref. No.
GROUP A All Models							
S-103-D	Capscrew (3/8"-16 x 1-1/4")	4	1				
S-104	Capscrew (3/8"-16 x 2-1/4")	2	2				
S-109	Capscrew (3/8"-16 x 7/8")	3	3				
S-117	Capscrew (3/8"-16 x 3/4")	3	4				
S-120	Capscrew (3/8"-16 x 1-3/4")	1					
S-137	Capscrew (3/8"-16 x 2")	1	5				
S-141	Capscrew (3/8"-16 x 2-3/4")	1	6				
S-163	Capscrew (3/8"-16 x 3-1/4")	4	7				
BM-77377	Cover, gear (150241)	1					
139810	Bushing	1	8				
60408	Dowel	1	9				
67857	Dowel	1	10				
70653	Dowel	1	11				
135223	Gasket	1	12				
150235	Gasket, gear housing	1	13				
BM-74402	Gear, idler (149559)	1	14				
149560	Bushing, idler gear	1	15				
S-604	Lockwasher (3/8")	19	16				
150234	Plate, gear housing	1	17				
S-908	Plug (3/8")	3	18				
135530	Ring, snap	1	19				
140896	Seal	1	20				
149566	Shaft, idler	1	21				
135099	Washer, idler gear	1	22				

PARTS INDENTED ARE INCLUDED IN THE PART UNDER WHICH THEY ARE INDENTED



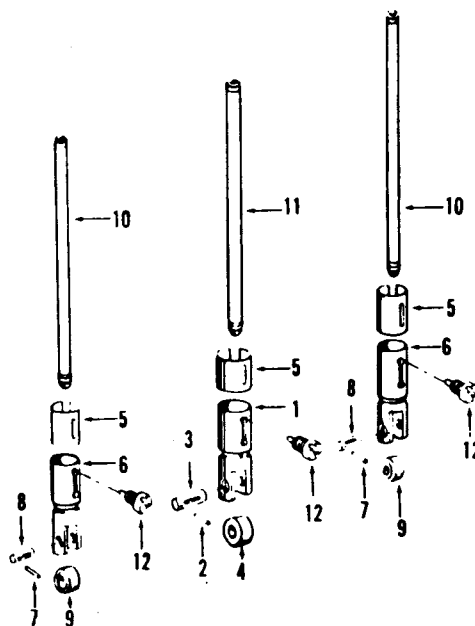
Part Number	Part Name	No. Req.	Ref. No.	Part Number	Part Name	No. Req.	Ref. No.
GROUP A C-105, C-105-BI, C-105-IP				122936	Capscrew, head to block	5	19
BM-74458	Head, cylinder (143540)	1	1	122937	Capscrew, head to block		20
119819	Half-collect, valve	32	2	116137	Crosshead, valve (right)	4	21
119806	Retainer, valve spring	16	3	116138	Crosshead, valve (left)	4	22
120089	Spring, valve	16	4	BM-98020	Gasket, cylinder head (143836)	1	23
148738	Valve, exhaust	8	5	181293	Grommet, water	16	24
44748	Valve, intake	8	6	181272	Retainer, water grommet	16	25
				S-273	Nut (3/8")	8	26
				68445	Pin, groove	2	
				181272	Retainer, water grommet	16	26
				147389	Screw, adjusting	8	27
				113995	Washer, cylinder head	10	28
GROUP B C-140				Same as Group A except:			
BM-74456	Head, cylinder (143540) (less valves)	1	1	BM-74490	Head, cylinder	1	1
146891	Dowel, manifold, threaded	2	7	144910	Valve, exhaust	8	5
105292	Guide, valve spring	16	8				
143526	Guide, crosshead valve	8	9				
105293	Guide, valve	16	10				
70843	Insert, valve seat	16	11				
60488	Pin, dowel, rocker shaft	2	12				
69233	Pin, dowel, oil line	1	13				
S-995	Plug, pipe (3/4")	9	14				
S-915-A	Plug, pipe (1/2")	6	15				
70459	Plug, fuse	1	16				
108019	Sleeve, injector	4	17				
103847	Stud, exhaust manifold	4	18				

PARTS INDENTED ARE INCLUDED IN THE PART UNDER WHICH THEY ARE INDENTED



Part Number	Part Name	No. Req.	Ref. No.	Part Number	Part Name	No. Req.	Ref. No.
GROUP A C-105, C-105-IP, C-105-BI				GROUP B C-140			
BM-96069	Lever, exhaust valve	2	1	Same as Group A except:			
BM-96068	Lever, and bushing (168829)	2		BM-96073	Lever, intake and exhaust (intake Cylinder, #2 & 4) (exhaust, Cylinder #1 & 3)	4	
142190	Bushing, lever	2	2				
S-212	Nut, adjusting screw	2	3				
168306	Screw, adjusting	2	4	BM-96069	Lever, intake and exhaust (intake, Cylinder #1 & 3) (exhaust, Cylinder #2 & 4)	4	
BM-96073	Lever, exhaust valve	2	5	GROUP C All Models			
BM-96072	Lever and bushing (168827)	2					
142190	Bushing, lever	2	2	BM-96078	Lever, injector (168826)	4	8
S-212	Nut, adjusting screw	2	3	BM-96077	Lever and bushing	4	
168306	Screw, adjusting	2	4	152173	Socket, injector	4	9
BM-96082	Lever, intake valve	2	6	BM-96076	Lever and bushing	4	
BM-96081	Lever and bushing (168830)	2		142180	Bushing	4	10
142190	Bushing, lever	2	2	S-212	Nut, adjusting screw	4	3
S-212	Nut, adjusting screw	2	3	168306	Screw, adjusting	4	4
168306	Screw, adjusting	2	4	114452	Bearing, shaft No. 3, 5	2	11
BM-96080	Lever, intake valve	2	7	114450	Bearing, shaft No. 4	1	12
BM-96079	Lever and bushing (168828)	2		114451	Bearing, shaft No. 1	1	13
142190	Bushing, lever	2	2	114453	Bearing, shaft No. 2	1	14
S-212	Nut, adjusting screw	2	3	113609	Shaft, rocker lever	1	15
168306	Screw, adjusting	2	4	113987	Plug, expansion	1	16
				S-150	Capscrew, bearing to cylinder head	5	17

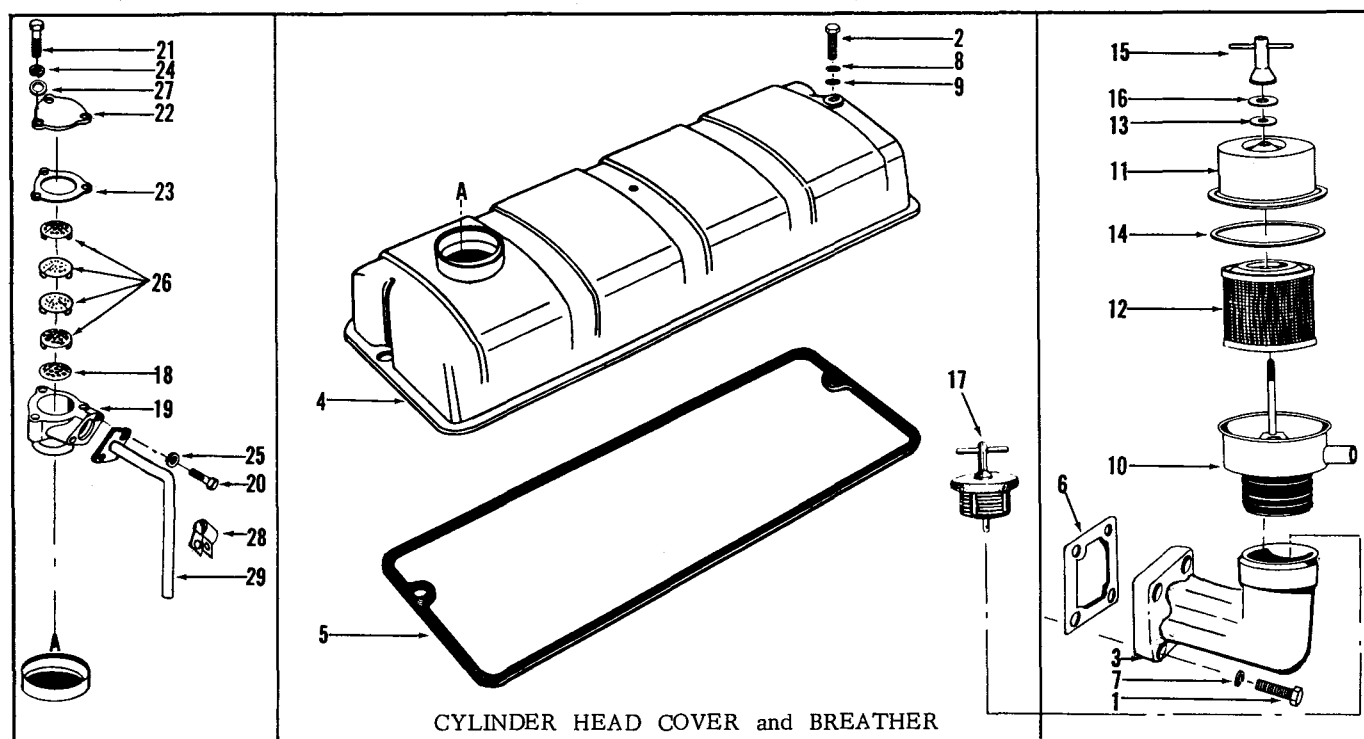
PARTS INDENTED ARE INCLUDED IN THE PART UNDER WHICH THEY ARE INDENTED



PUSH RODS and TAPPETS

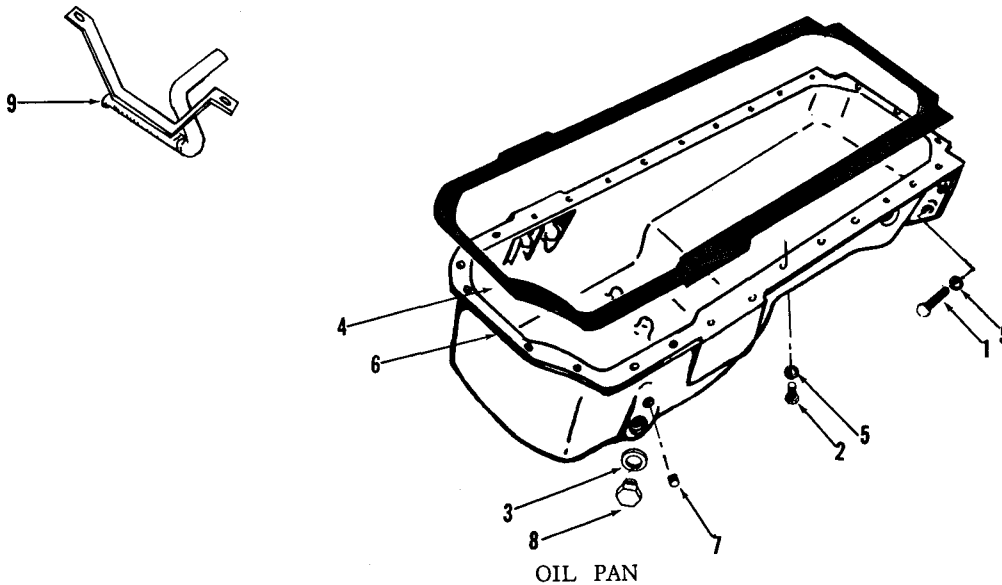
Part Number	Part Name	No. Req.	Ref. No.	Part Number	Part Name	No. Req.	Ref. No.
GROUP A All Models							
BM-40616	Tappet, injector (113745)	4	1				
108187	Lockwire	4	2				
113748	Pin, roller	4	3				
60521	Roller, tappet	4	4				
108156	Sleeve, guide	4	5				
BM-40615	Tappet, valve (113746)	8	6				
108186	Lockwire	8	7				
113749	Pin, roller	8	8				
69027	Roller, tappet	8	9				
108156	Sleeve, guide	8	5				
BM-46364	Rod, intake and exhaust push (112695)	8	10				
BM-46363	Rod, injector push (112699)	4	11				
126299	Guide, tappet	12	12				

PARTS INDENTED ARE INCLUDED IN THE PART UNDER WHICH THEY ARE INDENTED



Part Number	Part Name	No. Req.	Ref. No.	Part Number	Part Name	No. Req.	Ref. No.
GROUP A C-105, C-105-BI, C-105-IP				GROUP B C-140			
S-102	Capscrew (5/16"-18 x 1")	4	1	Same as Group A except:			
S-104	Capscrew (3/8"-16 x 2-1/4")	3	2	101322	Cap	1	17
149284	Connection, breather	1	3	132407	Cover, cylinder head (add hole "A")	1	4
132406	Cover, cylinder head (omit hole "A")	1	4	CRANKCASE BREATHER			
130350	Gasket, cover	1	5	250729	Breather	1	
149285	Gasket, connection	1	6	105021	Baffle, breather	1	18
S-605	Lockwasher (5/16")	4	7	122133	Body, breather	1	19
70415	"O" ring	3	8	S-115	Capscrew (5/16"-18 x 7/8")	2	20
115231	Washer, cupped	3	9	S-167-A	Capscrew (1/4"-20 x 7/8")	3	21
CRANKCASE BREATHER				122136	Cover, breather	1	22
156780	Breather	1		122135	Gasket, cover	1	23
156781	Body, breather	1	10	S-600	Lockwasher, cover to body (1/4)	3	24
155997	Cover, breather	1	11	S-605	Lockwasher (5/16")	2	25
AF-250	Element, breather	1	12	105019	Screen, breather	4	26
125015	Gasket, wingnut	1	13	S-631	Washer, cover to body (9/32")	3	27
125019	Gasket, cover	1	14	69911-A	Clamp, hose	1	28
150662	Handle "T"	1	15	146146	Tube, breather vent	1	29
125016	Washer	1	16				

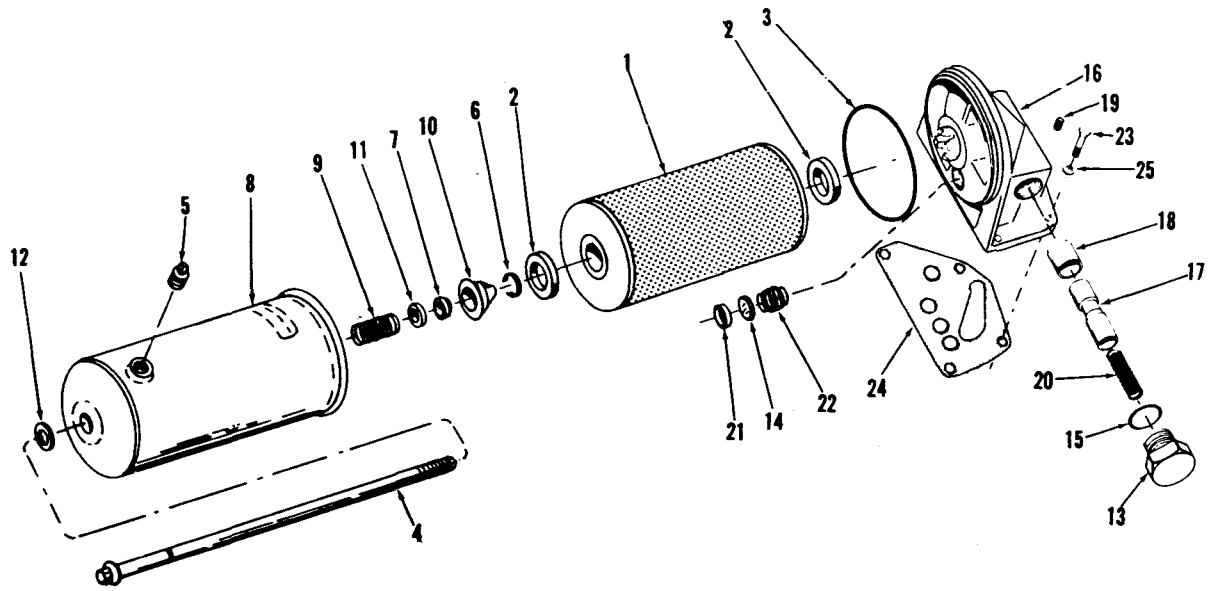
PARTS INDENTED ARE INCLUDED IN THE PART UNDER WHICH THEY ARE INDENTED



Part Number	Part Name	No. Req.	Ref. No.	Part Number	Part Name	No. Req.	Ref. No.
GROUP A All Models							
S-112	Capscrew (3/8"-16 x 1")	5	1				
S-169-A	Capscrew (3/8"-16 x 4-1/2")	17	2				
S-3050	Gasket, plug oil drain	1	3				
135411	Gasket, oil pan	1	4				
S-604	Lockwasher (3/8")	22	5				
144761	Pan, oil	1	6				
S-911-B	Plug, pipe (1/8")	2	7				
110907	Plug, oil pan drain	1	8				
BM-90065	Tube, oil suction	1	9				
OIL GAUGE TUBE and DIPSTICK							
146263	Bayonet	1					
144770	Tube, gauge	1					
S-1020	Connector, tubing	1					

PARTS INDENTED ARE INCLUDED IN THE PART UNDER WHICH THEY ARE INDENTED

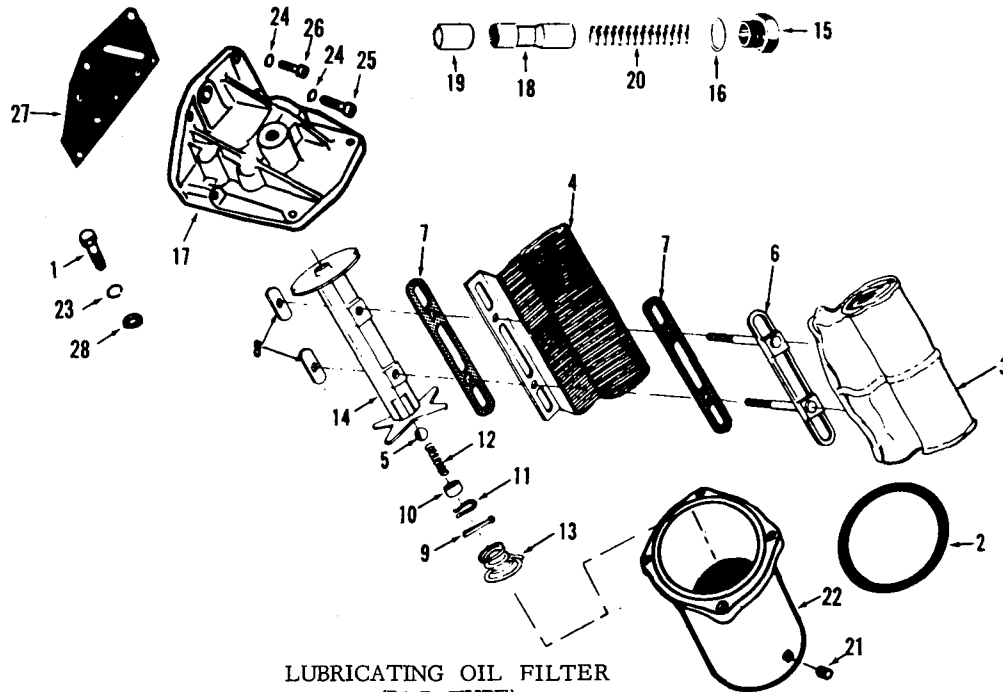




LUBRICATING OIL FILTER  
(PAPER ELEMENT TYPE)

Part Number	Part Name	No. Req.	Ref. No.	Part Number	Part Name	No. Req.	Ref. No.
GROUP A C-105-IP							
BM-95363	Assembly, lubricating oil filter	1					
163359	Decal	1					
BM-97627	Filter	1					
LF-516	Cartridge	1	1				
153514	Seal, cartridge	2	2				
153528	Gasket	1	3				
165286	Shell, assembly	1					
153517	Bolt	1	4				
S-901	Plug, pipe (1/4")	1	5				
S-16245	Ring, snap	1	6				
153518	Seal, bolt	1	7				
153516	Shell, filter	1	8				
153519	Spring, cartridge	1	9				
153521	Support, cartridge	1	10				
153520	Washer, bolt	1	11				
8265	Washer, copper	1	12				
BM-94168	Head assembly	1					
69354	Cap	1	13				
153525	Disc, by-pass	1	14				
S-3050	Gasket, cap	1	15				
169652	Head, filter	1	16				
148216	Plunger	1	17				
148217	Plunger	1	18				
S-911-B	Plug, pipe	1	19				
69355	Spring	1	20				
153526	Seat, by-pass	1	21				
251152	Spring, by-pass	1	22				
S-112	Capscrew (3/8"-16 x 1")	4	23				
169653	Gasket, filter head	1	24				
S-604	Lockwasher (3/8")	4	25				

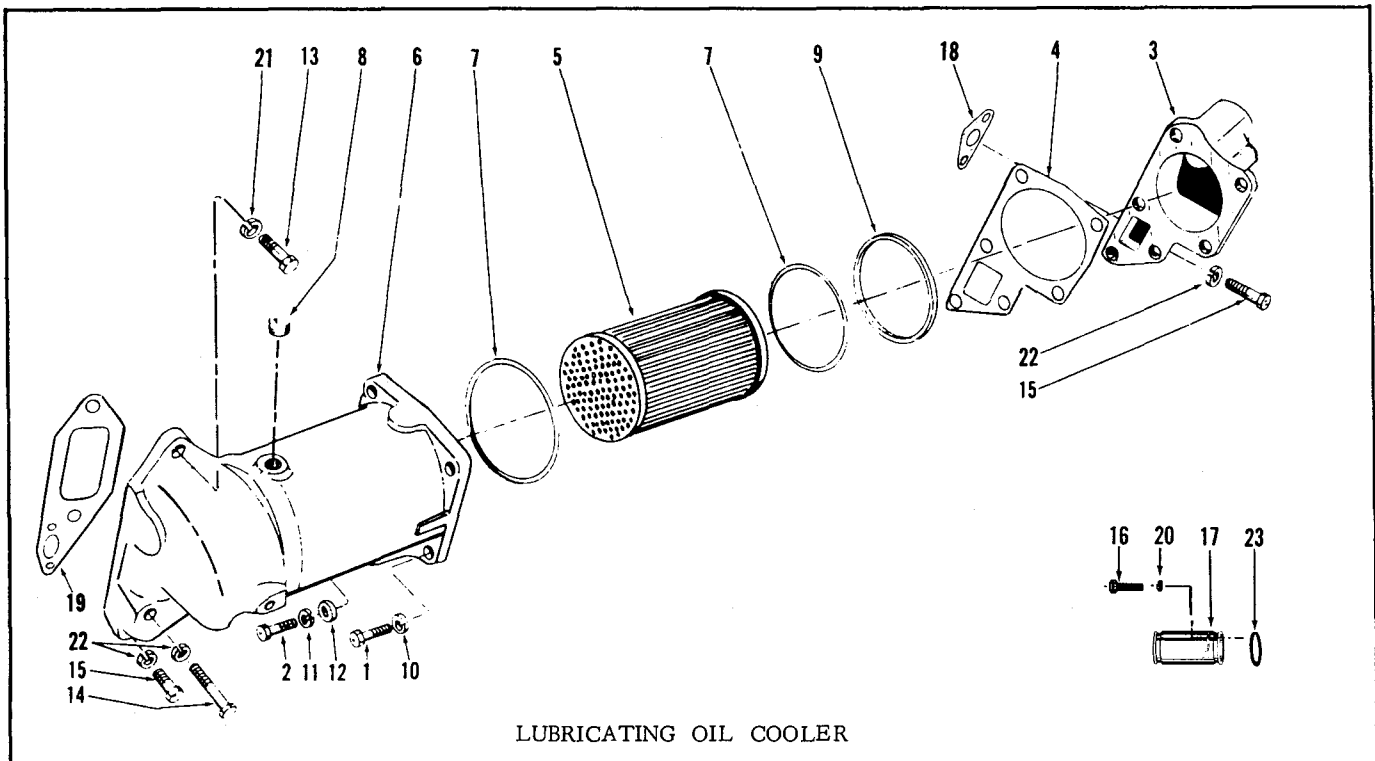
PARTS INDENTED ARE INCLUDED IN THE PART UNDER WHICH THEY ARE INDENTED



LUBRICATING OIL FILTER  
(BAG TYPE)

Part Number	Part Name	No. Req.	Ref. No.	Part Number	Part Name	No. Req.	Ref. No.
	GROUP B C-105, C-105-BL, C-140						
BM-78381	Filter assembly	1		69355	Spring, relief valve	1	20
S-137	Capscrew (3/8"-16 x 2")	4	1	S-911-B	Plug, pipe	1	
114479	Decal	1		69901	Plug, drain		21
69751	Gasket, cover to shell	1	2	250722	Shell assembly		22
104926	Filter, lubricating oil	1		S-610	Lockwasher (7/16")	4	23
S-1915-1	Element assembly	1		S-604	Lockwasher (3/8")	4	24
S-1953	Bag, filter	1	3	S-112	Capscrew (3/8"-16 x 1")	2	25
134729	Separator	1	4	S-141	Capscrew (3/8"-16 x 2-3/4")	2	26
128798	Spool assembly	1		112795	Gasket, head to block	1	27
128805	Ball, by-pass relief	1	5	S-622	Washer, plain (15/32")	4	28
128800	Clamp, bag	1	6				
128801	Gasket, clamp	2	7				
128802	Nut, clamp	2	8				
S-503	Pin, cotter	1	9				
128803	Retainer, spring	1	10				
128807	Ring, retaining	1	11				
128804	Spring, by-pass adjusting	1	12				
128806	Spring, shock	1	13				
128799	Spool	1	14				
BM-49131	Head assembly						
69354	Cap, spring retaining	1	15				
S-3050	Gasket, cap	1	16				
118812	Head, oil filter	1	17				
BM-68225	Plunger, relief valve	1					
148216	Plunger, high pressure	1	18				
148217	Plunger, oil pressure	1	19				

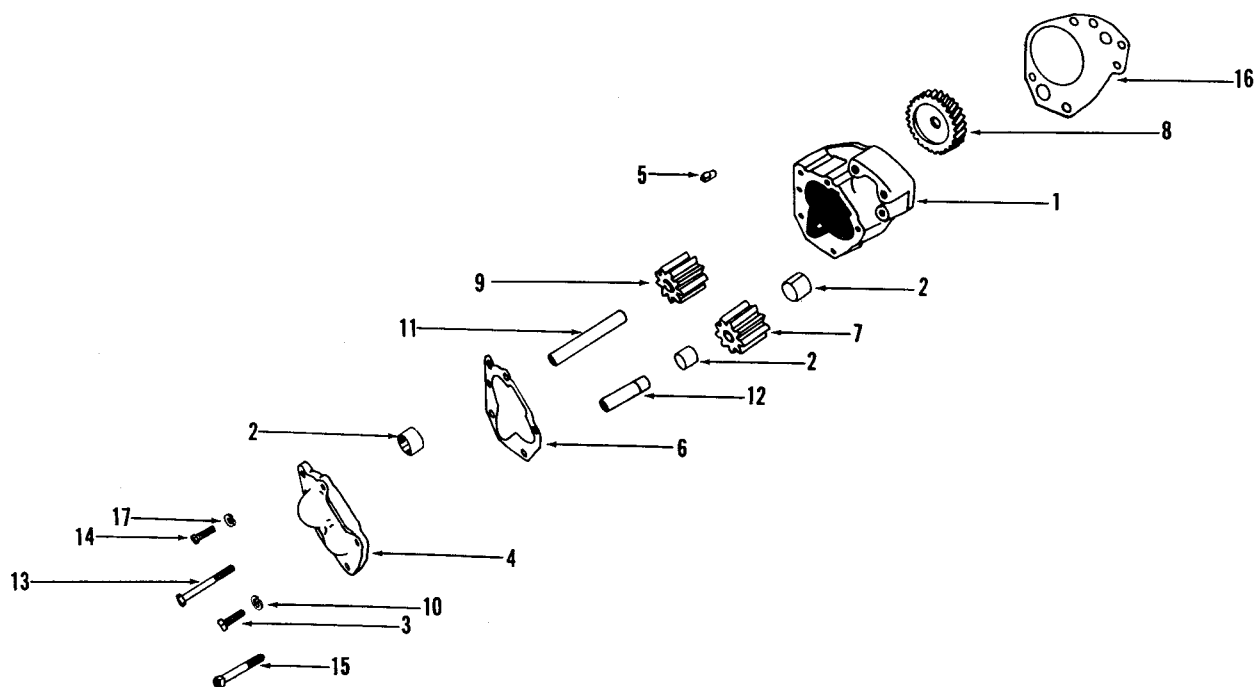
PARTS INDENTED ARE INCLUDED IN THE PART UNDER WHICH THEY ARE INDENTED



LUBRICATING OIL COOLER

Part Number	Part Name	No. Req.	Ref. No.	Part Number	Part Name	No. Req.	Ref. No.
GROUP A All Models							
BM-67305	Assembly, lubricating oil cooler	1					
S-103-D	Capscrew (3/8"-16 x 1-1/4")	4	1				
S-119	Capscrew (5/16"-18 x 1-1/4")	2	2				
134211	Cover	1	3				
111956	Gasket	1	4				
BM-54620	Housing assembly	1					
110848	Element	1	5				
111865	Housing	1	6				
148293	"O" ring	2	7				
S-910-B	Plug, pipe (1/4")	1	8				
110827	Retainer, element and "O" ring	1	9				
S-604	Lockwasher (3/8")	4	10				
S-605	Lockwasher (5/16")	2	11				
S-626	Washer, plain (11/32")	2	12				
MOUNTING PARTS							
S-123	Capscrew (3/4"-10 x 2-1/2")	1	13				
S-103	Capscrew (5/16"-18 x 2-1/4")	1	14				
S-119	Capscrew (5/16"-18 x 1-1/4")	3	15				
S-114	Capscrew (1/4"-20 x 3/4")	1	16				
111753	Connection	1	17				
111955	Gasket, cover to block (front)	1	18				
68615	Gasket, housing to block (rear)	1	19				
S-600	Lockwasher (1/4")	1	20				
S-604	Lockwasher (3/8")	1	21				
S-605	Lockwasher (5/16")	4	22				
43463-A	"O" ring	2	23				

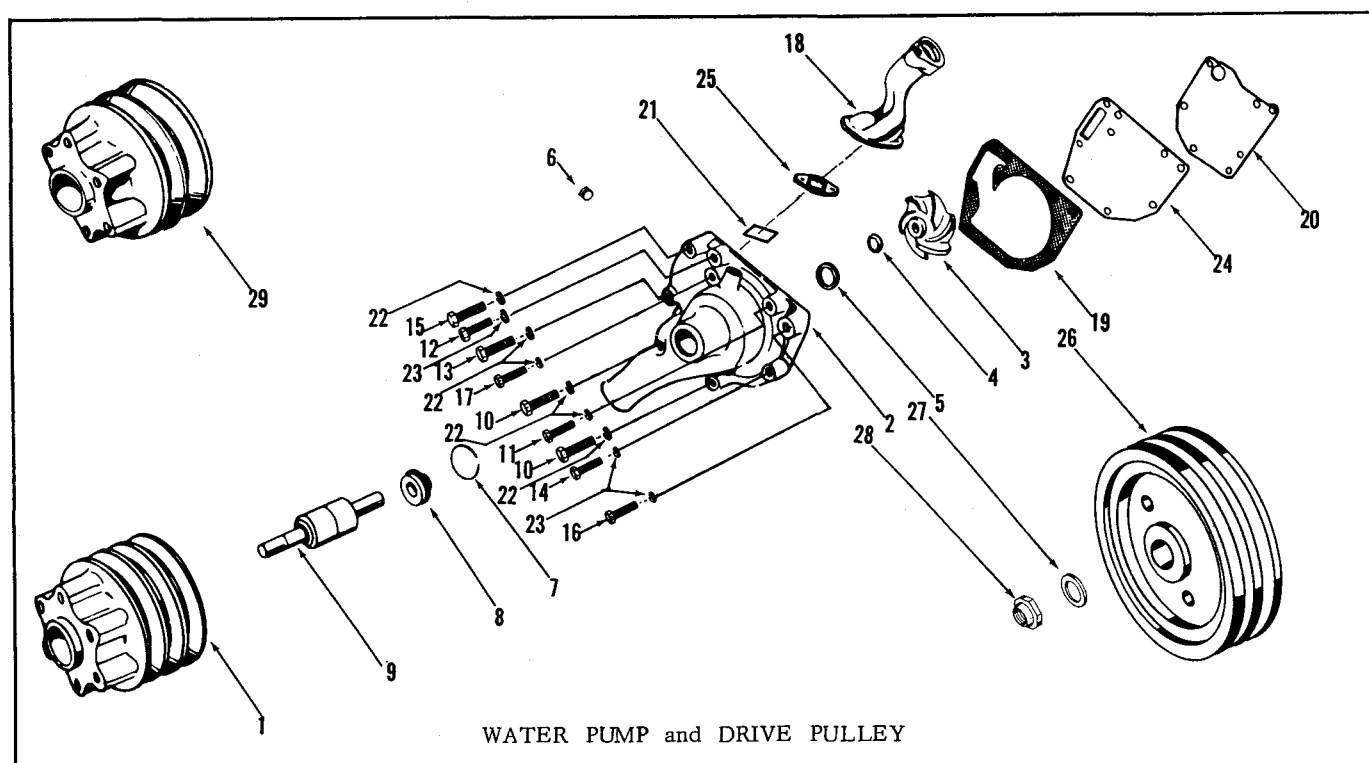
PARTS INDENTED ARE INCLUDED IN THE PART UNDER WHICH THEY ARE INDENTED



LUBRICATING OIL PUMP

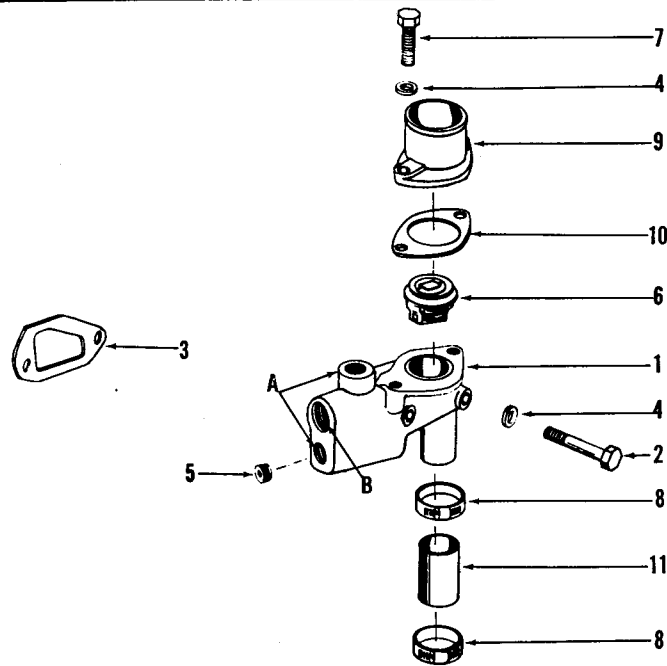
Part Number	Part Name	No. Req.	Ref. No.	Part Number	Part Name	No. Req.	Ref. No.
GROUP A All Models							
BM-66908	Pump, oil	1					
BM-66918	Body and bushing (134847)	1	1				
68586	Bushing, drive shaft	1	2				
S-115	Capscrew, body to cover (5/16"-18 x 7/8")	3	3				
BM-66919	Cover and bushing (134586)	1	4				
68586	Bushing, drive shaft	1	2				
68585	Dowel, pin, body to cover	1	5				
135297	Gasket, cover to body	1	6				
BM-20443	Gear and bushing, idler (68589)	1	7				
68586	Bushing, idler gear	2	2				
134615	Gear, drive	1	8				
68588	Gear, idler drive	1	9				
S-605	Lockwasher (5/16")	3	10				
135152	Shaft, drive	1	11				
135153	Shaft, idler	1	12				
S-105	Capscrew (3/8"-16 x 3-1/2")	3	13				
S-112	Capscrew (3/8"-16 x 1")	1	14				
S-141	Capscrew (3/8"-16 x 2-3/4")	3	15				
135296	Gasket	1	16				
S-604	Lockwasher (3/8")	8	17				
135528	"O" ring, rubber	2					

PARTS INDENTED ARE INCLUDED IN THE PART UNDER WHICH THEY ARE INDENTED



Part Number	Part Name	No. Req.	Ref. No.	Part Number	Part Name	No. Req.	Ref. No.
GROUP A C-140, C-105				ACCESSORY DRIVE PULLEY			
BM-67303	Pump, water	1		BM-58373	Pulley, drive (124618)	1	26
124626	Pulley	1	1	S-690	Washer (15/16")	1	27
135077	Body, pump	1	2	S-207-A	Nut	1	28
BM-71639	Impeller (135078)	1	3	GROUP B			
143913	Film, bonding	1	4	C-105-IP, C-105-BI			
135079	Seat, impeller	1	5	Same as Group A except:			
S-915-A	Plug, pipe (1/2")	1	6				
132426	Ring, snap	1	7				
170895	Seal, pump	1	8	BM-67302	Pump, water	1	29
124628	Shaft, drive	1	9	124679	Pulley	1	
				124927	Belt, "V"	2	
MOUNTING PARTS							
178571	Belt, "V"	2					
S-102-D	Capscrew (3/8"-16 x 3")	2	10				
S-120	Capscrew (3/8"-16 x 1-3/4")	1	11				
S-122	Capscrew (7/16"-14 x 1-1/4")	1	12				
S-126	Capscrew (3/8"-16 x 2-1/2")	1	13				
S-140	Capscrew (7/16"-14 x 1-3/4")	1	14				
S-141	Capscrew (3/8"-16 x 2-3/4")	1	15				
106069	Capscrew (7/16"-14 x 2")	1	16				
108707	Capscrew (3/8"-16 x 1-1/2")	1	17				
134125	Connection, water pump outlet	1	18				
134026	Gasket, water pump	1	19				
134027	Gasket, water pump plate	1	20				
118375	Insert, water outlet connection	1	21				
S-604	Lockwasher (3/8")	6	22				
S-610	Lockwasher (7/16")	3	23				
134007	Plate, water pump	1	24				
118374	Plate, water outlet connection	1	25				

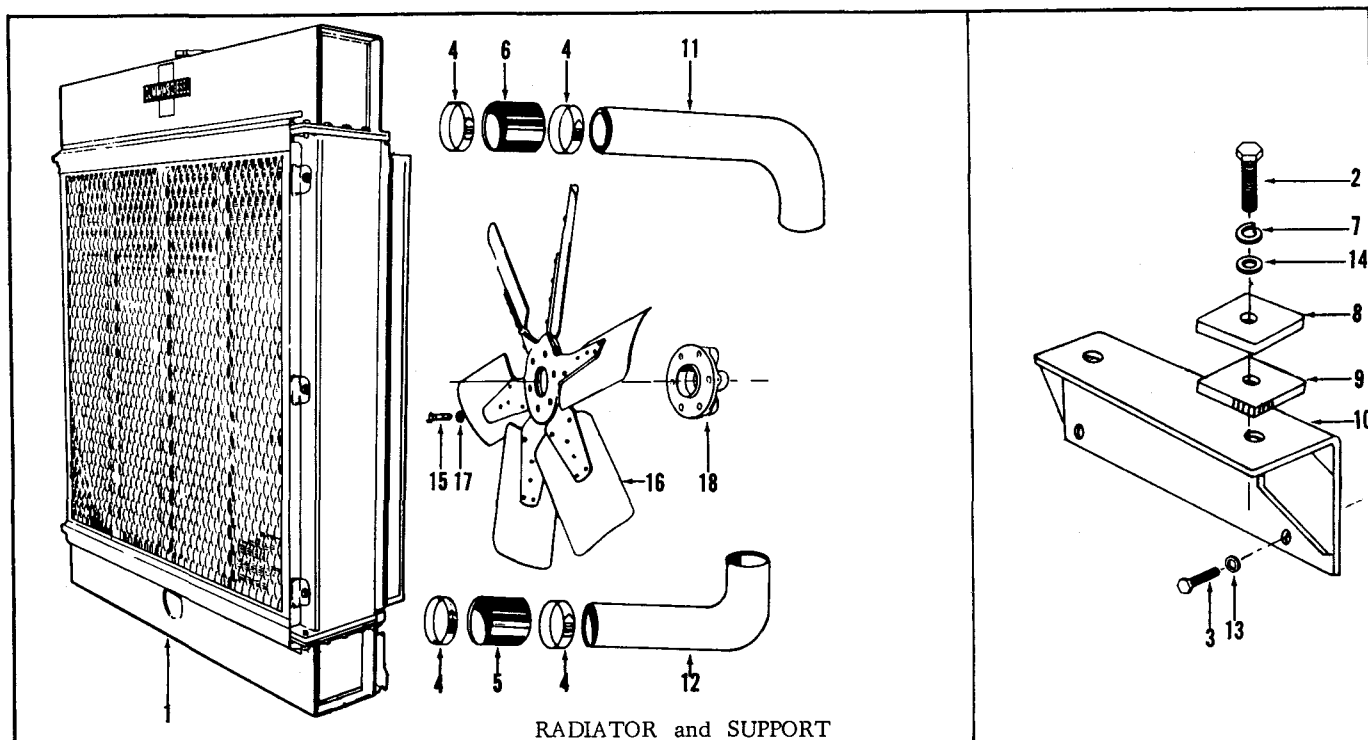
PARTS INDENTED ARE INCLUDED IN THE PART UNDER WHICH THEY ARE INDENTED



THERMOSTAT HOUSING

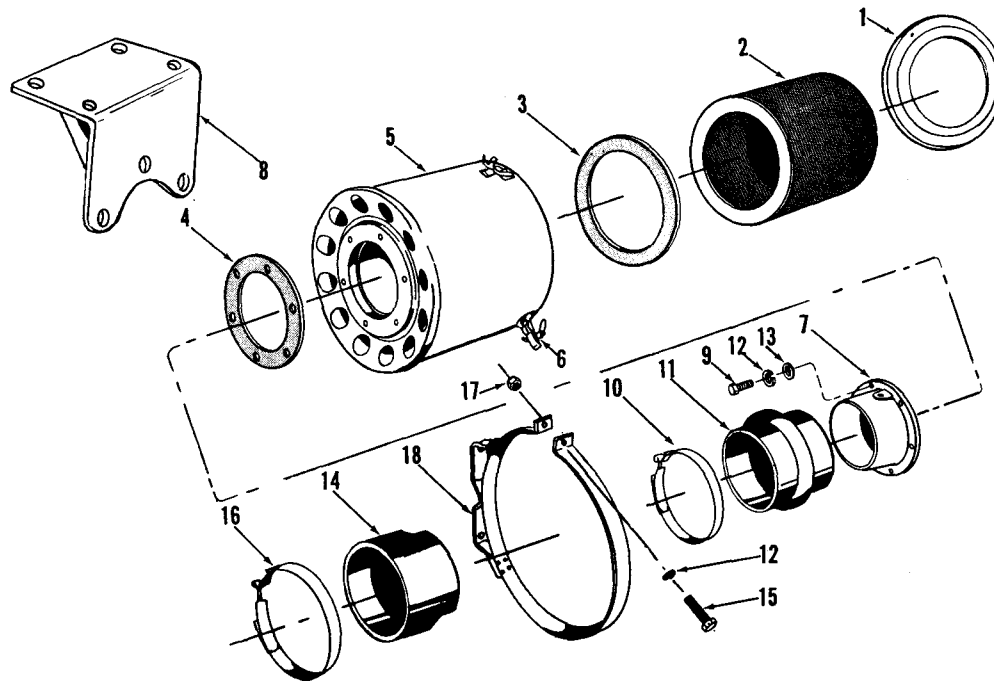
Part Number	Part Name	No. Req.	Ref. No.	Part Number	Part Name	No. Req.	Ref. No.
GROUP A C-105, C-105-BI, C-140							
113927	Housing, thermostat	1	1				
S-102-D	Capscrew (3/8"-16 x 3")	2	2				
113923	Gasket, thermostat housing	1	3				
S-604	Lockwasher (3/8")	2	4				
S-924	Plug, pipe (1/2")	1	5				
135729	Thermostat 167° - 172°	1	6				
CONNECTION							
S-103-D	Capscrew (3/8"-16 x 1-1/4")	2	7				
43828-A	Clamp, hose	2	8				
113625	Connection, water outlet	1	9				
113914	Gasket, outlet connection	1	10				
116146	Hose	1	11				
S-604	Lockwasher (3/8")	2	4				
GROUP B C-105-IP							
Same as Group A except:							
113928	Housing, thermostat	1	1				
S-924	Plug, pipe (1/2") (Hole "A")	2	5				
S-962	Plug, pipe (1") (Hole "B")	1					

PARTS INDENTED ARE INCLUDED IN THE PART UNDER WHICH THEY ARE INDENTED



Part Number	Part Name	No. Req.	Ref. No.	Part Number	Part Name	No. Req.	Ref. No.
	GROUP A C-105-IP						
137246	Radiator	1	1				
	MOUNTING PARTS						
137577	Adapter, shroud	1					
137247	Brace	1					
S-102	Capscrew (5/16"-18 x 1")	1					
S-107	Capscrew (5/16"-18 x 3/4")	4	2				
S-145	Capscrew (1/2"-13 x 1-1/4")	4	3				
43828	Clamp, hose	8	4				
63241-L	Hose	2	5				
63241-J	Hose	2	6				
S-605	Lockwasher (5/16")	4	7				
70919	Nameplate	1					
S-200	Nut (1/2")	6					
S-3097	Screw	2					
137258	Spacer	2	8				
137259	Spacer	2	9				
148358	Support, radiator	1	10				
137249	Pipe	1	11				
137256	Pipe	1	12				
S-608	Washer (1/2")	6	13				
S-670	Washer, plain (17/32")	6	14				
	FAN, FAN GUARD and FAN SPACER						
S-137	Capscrew (3/8"-16 x 2")	6	15				
S-107	Capscrew (5/16"-18 x 3/4")	4					
122786	Fan, sucker	1	16				
137254	Guard, fan	1					
S-604	Lockwasher (3/8")	6	17				
S-605	Lockwasher (5/16")	4					
100462	Spacer	1	18				

PARTS INDENTED ARE INCLUDED IN THE PART UNDER WHICH THEY ARE INDENTED



AIR CLEANER

Part Number	Part Name	No. Req.	Ref. No.	Part Number	Part Name	No. Req.	Ref. No.
GROUP A C-105, C-105-IP, C-105-BI				103806	Hose	1	11
106830	Cleaner, air	1		S-605	Lockwasher (7/16")	7	12
107130	Cover	1	1	S-221	Nut (3/8")	1	17
106836	Element (AF-259)	1	2	107091	Strap	2	18
107131	Gasket, element	1	3	S-626	Washer (11/16")	6	13
107132	Gasket, flange	1	4				
107129	Shell	1	5				
122121	Spring	3	6				
106123	Adapter, air cleaner	1	7				
106125	Bracket, air cleaner	1	8				
S-115	Capscrew (5/16"-18 x 7/8")	6	9				
125739	Clamp, hose, "T" bolt	4	10				
103806	Hose	2	11				
S-605	Lockwasher (7/16")	6	12				
S-626	Washer (11/16")	6	13				
GROUP B C-140							
106835	Cleaner, air	1					
107125	Cover	1	1				
106838	Element (AF-252)	1	2				
107126	Gasket, element	1	3				
107127	Gasket, flange	1	4				
107128	Shell	1	5				
122121	Spring	3	6				
106124	Adapter, air cleaner	1	7				
108799	Adapter, hose	1	14				
S-115	Capscrew (5/16"-18 x 7/8")	6	9				
S-119	Capscrew (5/16"-18 x 1-1/4")	1	15				
125739	Clamp, "T" bolt hose	3	10				
125740	Clamp, "T" bolt hose	1	16				

PARTS INDENTED ARE INCLUDED IN THE PART UNDER WHICH THEY ARE INDENTED



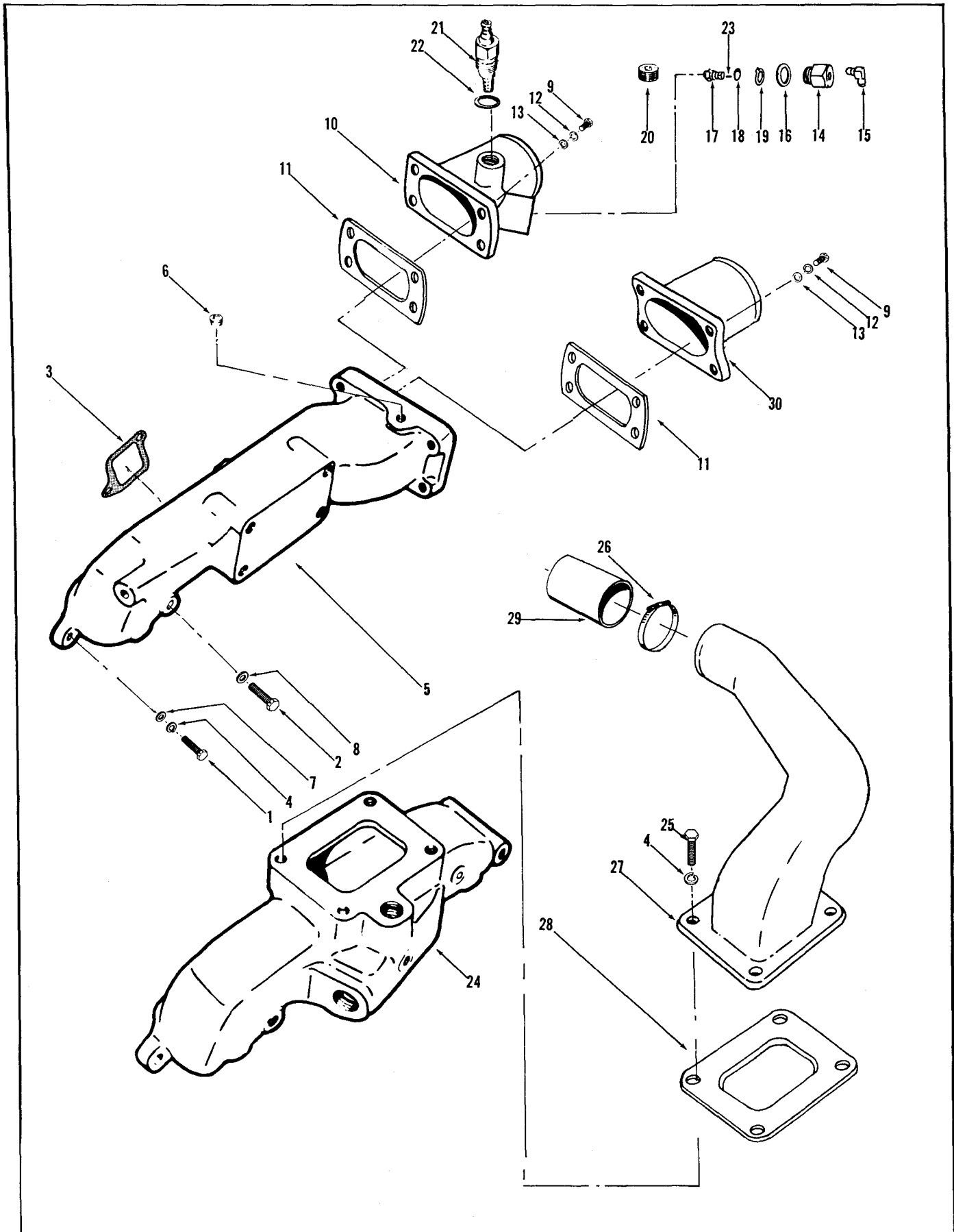
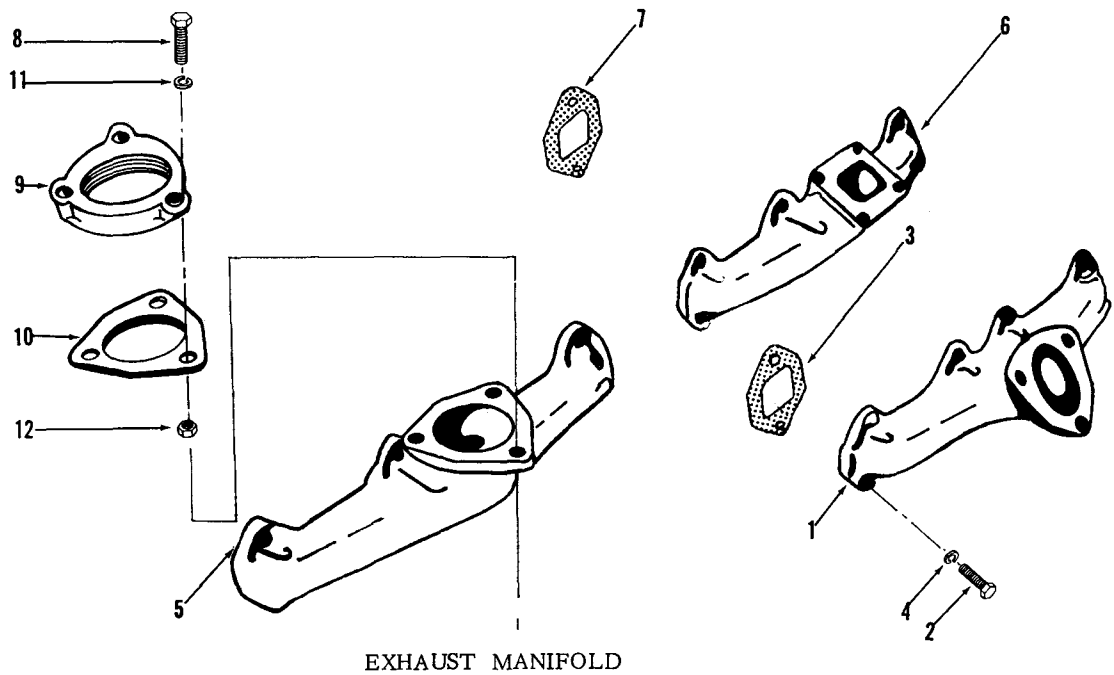


FIG. 1 AIR INTAKE MANIFOLD, GLOW PLUG, CONNECTIONS and AIR CROSSOVER

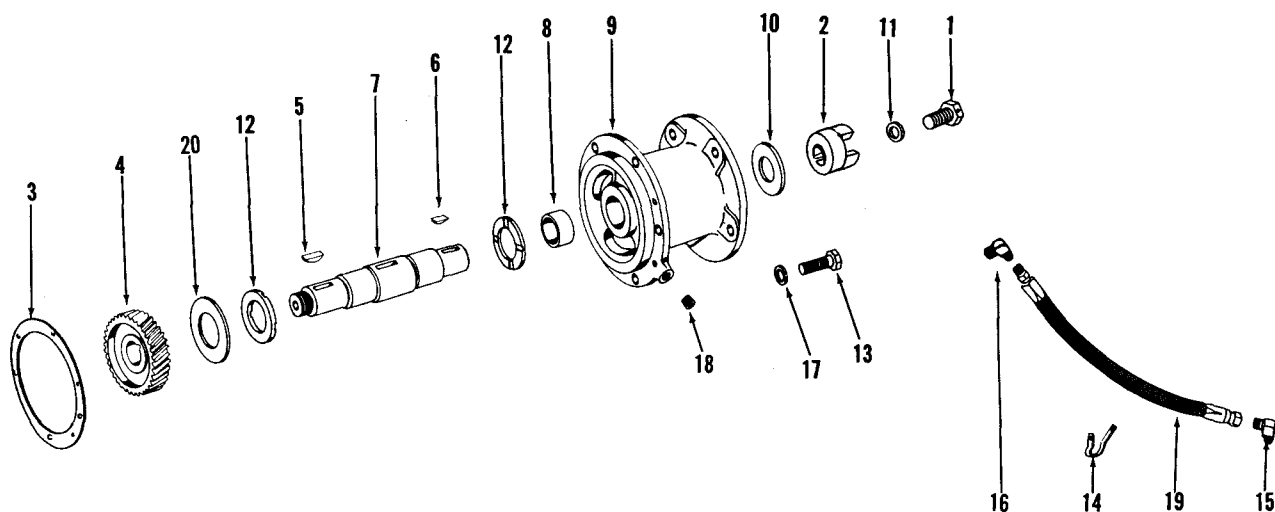
## CJ-33-H-1 (Cont'd)

Part Number	Part Name	No. Req.	Fig. No.	Ref. No.	Part Number	Part Name	No. Req.	Fig. No.	Ref. No.
GROUP A C-105					GROUP B C-140				
S-103-D	Capscrew (3/8"-16 x 1-1/4")	2	1	1	Same as Group A except:				
S-199-B	Capscrew (3/8"-16 x 3-3/4")	2	1	2					
70851	Gasket, intake manifold	2	1	3	126123	Manifold, air intake	1	1	24
S-604	Lockwasher (3/8")	2	1	4	S-103-D	Capscrew (3/8"-16 x 1-1/4")	4	1	25
128467	Manifold, air intake	1	1	5	43829-C	Clamp, hose	2	1	26
S-910-B	Plug, pipe (1/4")	1	1	6	126078	Crossover, turbocharger	1	1	27
S-602	Washer, plain (13/32")	2	1	7	126088	Gasket, air crossover	1	1	28
S-2760	Washer (25/64")	2	1	8	67185	Hose, crossover to turbocharger	1	1	29
CONNECTION					S-604	Lockwasher (3/8")	4	1	4
S-103-D	Capscrew (3/8"-16 x 1-1/4")	4	1	9	GROUP C C-105-BI				
103837	Connection	1	1	10	Same as Group A except:				
61574	Gasket, connection	1	1	11	(Omit Glow plug)				
S-604	Lockwasher (3/8")	4	1	12					
S-602	Washer, plain (13/32")	4	1	13	101424	Connection	1	1	30
GLOW PLUG					GROUP D C-105-IP				
125880	Adapter, nozzle	1	1	14	Same as Group A except:				
68139	Elbow, hose	1	1	15					
67946	Gasket	1	1	16	(Omit Glow plug and connection)				
69215	Nozzle	1	1	17					
68061-A	"O" ring	1	1	18					
68178-1	Lockplate, nozzle	1	1	19					
68606	Plug, pipe (1/8")	1	1	20					
68812	Plug, glow	1	1	21					
118273	Gasket, glow plug	1	1	22					
43468	Pin, groove	1	1	23					



Part Number	Part Name	No. Req.	Ref. No.	Part Number	Part Name	No. Req.	Ref. No.
GROUP A C-105							
130559	Manifold, exhaust	1	1				
S-103-D	Capscrew (3/8"-16 x 1-1/4")	8	2				
114030	Gasket, manifold exhaust	4	3				
S-604	Lockwasher (3/8")	8	4				
GROUP B C-105-BI							
Same as Group A except:							
112505	Manifold, exhaust	1	5				
GROUP C C-140							
Same as Group A except:							
126039	Manifold, exhaust	1	6				
129410	Gasket, exhaust manifold	1	7				
GROUP D C-105-IP							
Same as Group B except:							
S-160-B	Capscrew (1/2"-20 x 2-1/2")	3	8				
9563	Flange, exhaust	1	9				
9579	Gasket, exhaust flange	1	10				
S-608	Lockwasher (1/2")	3	11				
S-212	Nut (1/2")	3	12				

PARTS INDENTED ARE INCLUDED IN THE PART UNDER WHICH THEY ARE INDENTED



FUEL PUMP DRIVE

Part Number	Part Name	No. Req.	Ref. No.	Part Number	Part Name	No. Req.	Ref. No.
	GROUP A All Models						
BM-94791	Drive, fuel pump	1					
129510	Capscrew	1	1				
158826	Coupling, fuel pump drive half	1	2				
153218	Gasket	1	3				
159237	Gear, accessory drive	1	4				
S-301	Key	2	5				
S-316	Key	1	6				
170662	Shaft	1	7				
BM-77360	Support, accessory drive	1					
139810	Bushing, compressor drive	1	8				
147328	Support, compressor	1	9				
116390	Washer, clamping	1	10				
170664	Washer, plain	1	11				
116389	Washer, thrust	2	12				
S-119	Capscrew (5/16"-18 x 1-1/4")	1	13				
68425	Clip, hose	1	14				
67857	Dowel	1					
69318	Elbow, street	1	15				
69099	Elbow, oil restrictor	1	16				
S-605	Lockwasher (5/16")	1	17				
S-911-B	Plug, pipe (1/8")	1	18				
HS0401540MS	Hose	1	19				
180223	Seal, keyway	1	20				

PARTS INDENTED ARE INCLUDED IN THE PART UNDER WHICH THEY ARE INDENTED

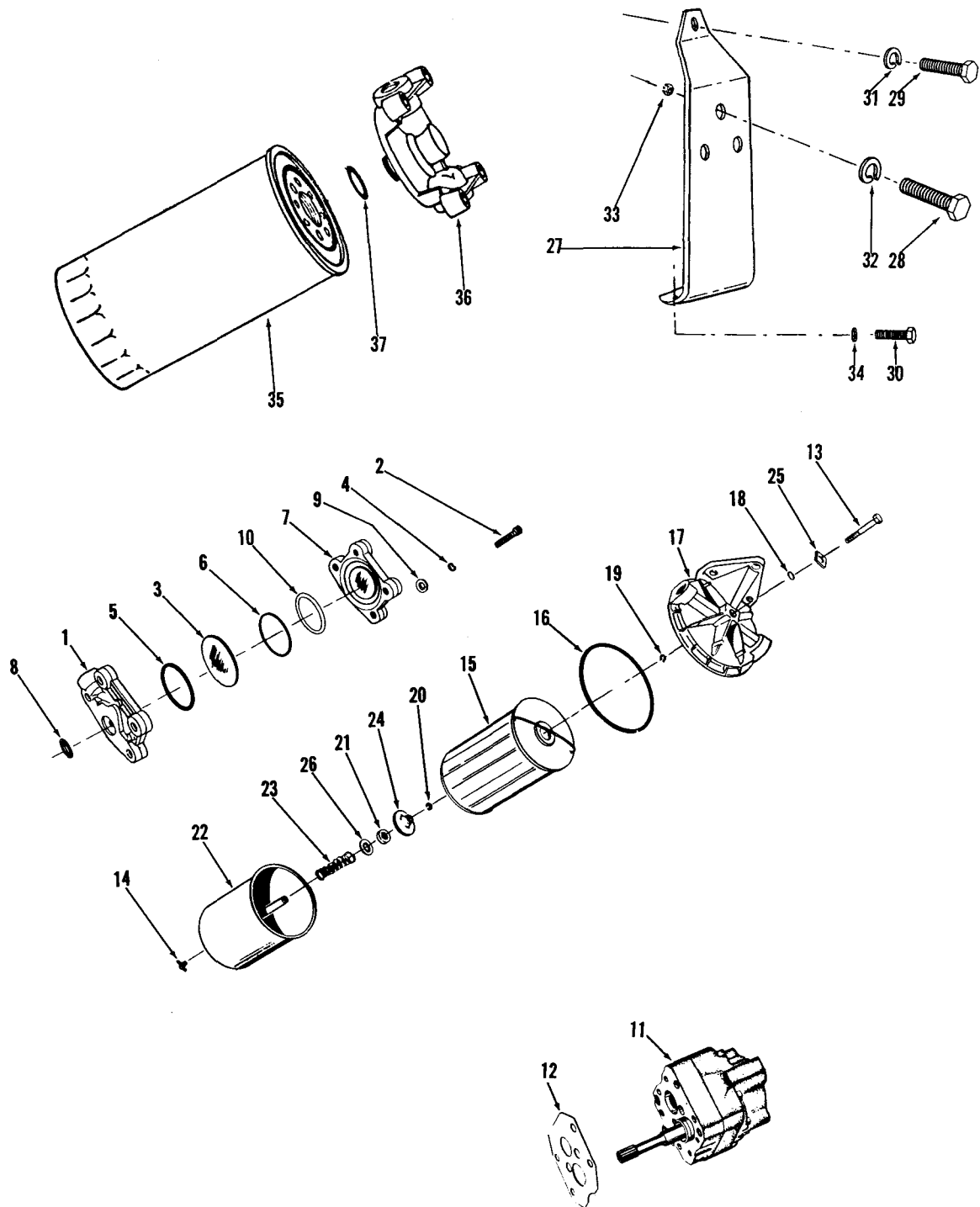


FIG. 2 FUEL PUMP DAMPER, GEAR PUMP and FILTERS

Part Number	Part Name	No. Req.	Fig. No.	Ref. No.	Part Number	Part Name	No. Req.	Fig. No.	Ref. No.
PT FUEL SYSTEM					MOUNTING PARTS C-105-IP ("ONLY")				
Each Cummins PT Fuel Pump is calibrated to obtain the best performance and fuel economy for your engine. Your Cummins Distributor or Dealer has the special tools required for complete re-build and calibration. Caution: do not disturb the fuel pressure settings or the throttle screw settings, as serious damage to your engine may result.					159748	Bracket, fuel filter	1	2	27
					S-103-D	Capscrew (3/8"-16 x 1-1/4")	3	2	28
					S-109	Capscrew (3/8"-16 x 7/8")	1	2	29
					S-149-A	Capscrew (3/8"-16 x 5")	2	2	30
					HS1002000SS	Hose	1		
					S-602	Lockwasher (13/32")	1	2	31
					S-604	Lockwasher (3/8")	3	2	32
					70168	Nut, huglock	3	2	33
					68368-A	Spacer	2	2	34
					FUEL FILTER				
					GROUP B C-105, C-140				
					154711	Assembly, fuel filter	1		
					FF-105	Cartridge (154709)	1	2	35
					142784	Head, filter	1	2	36
					250006	Gasket, cartridge	1	2	37
					FUEL PUMP DAMPER				
					(All Models)				
BM-76340	Damper, fuel pump	1	2						
153336	Body, damper	1	2	1					
S-172-C	Capscrew	2	2	2					
139834	Diaphragm	1	2	3					
S-698	Lockwasher	2	1	4					
139988	"O" ring	1	2	5					
100099	"O" ring	1	2	6					
153338	Plate, damper	1	2	7					
151900	Seal	1	2	8					
70704	Washer	2	2	9					
160514	Washer, nylon	1	2	10					
					GEAR PUMP				
BM-97502	Pump, gear 3/4" (R.H.)	1	2	11					
177764	Gasket, gear pump	1	2	12					
					FUEL FILTER				
					GROUP A				
					C-105-BI, C-105-IP				
151940	Filter, fuel	1							
121960	Capscrew, head to shell	1	2	13					
S-962-E	Cock, drain	1	2	14					
141986	Decal, filter	1							
FF-108	Element	1	2	15					
151881	Gasket, head to shell	1	2	16					
251128	Head, filter	1	2	17					
134736	"O" ring, capscrew	1	2	18					
135169	Ring, grip, capscrew	1	2	19					
251131	Ring, grip, post	1	2	20					
151884	Seal, pilot	1	2	21					
251091	Shell and post	1	2	22					
151885	Spring, filter	1	2	23					
151920	Support, filter element	1	2	24					
251081	Washer, capscrew	1	2	25					
S-658	Washer, plain (5/8")	1	2	26					

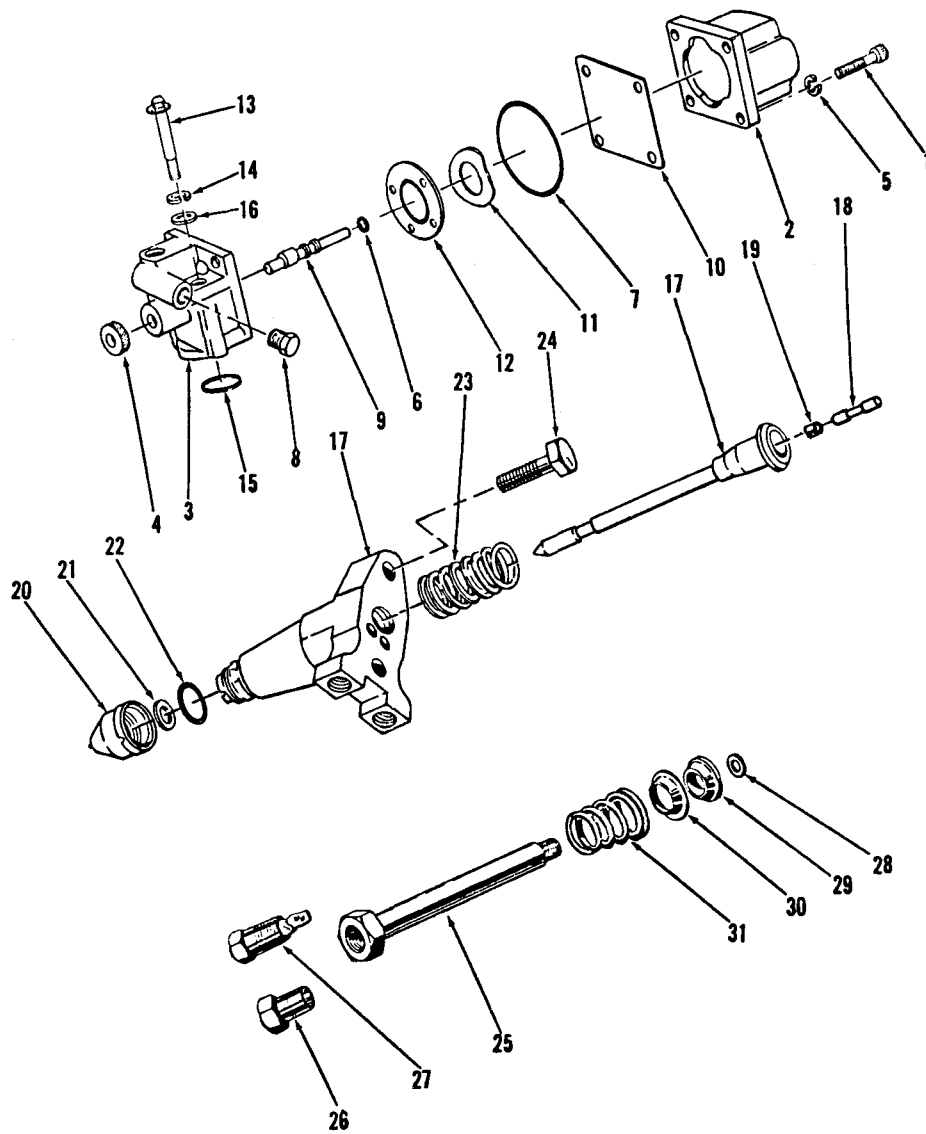
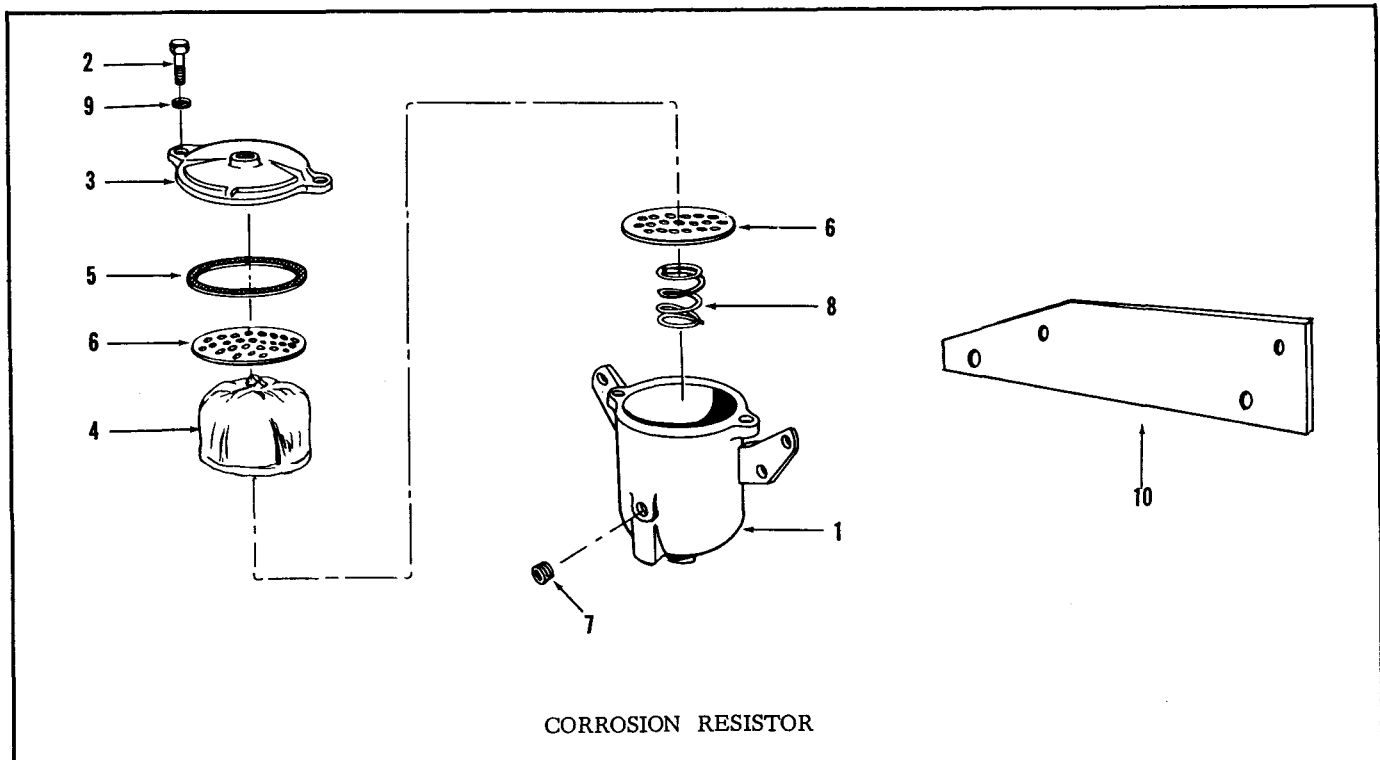


FIG. 3 SHUTDOWN VALVE, INJECTOR and FUEL INLET and DRAIN CONNECTIONS

Part Number	Part Name	No. Req.	Fig. No.	Ref. No.	Part Number	Part Name	No. Req.	Fig. No.	Ref. No.
	SHUTDOWN VALVE All Models					GROUP B C-140			
						Same as Group A except:			
BM-69973	Valve, shutdown (12 volt)	1			BM-46134	Fitting, injector drain	1		
S-1214	Capscrew, coil to housing	4	3	1	116473	Elbow	1		
134072	Coil assembly	1	3	2	S-911-B	Plug, pipe (1/8")	1		
129826	Housing, valve	1	3	3					
129838	Knob, override	1	3	4					
S-607	Lockwasher (3/16")	4	3	5		GROUP C C-105-IP			
129888	"O" ring, coil to housing	1	3	6		Same as Group A except:			
114791	"O" ring, shaft	1	3	7					
70295	Plug, pipe	1	3	8					
143679	Shaft, override	1	3	9	165485	Tube, fuel supply			
129839	Shield, fuel	1	3	10					
129768	Spring	1	3	11		FUEL INLET and DRAIN CONNECTION			
129827	Valve	1	3	12					
171546	Capscrew	2	3	13		All Models			
S-698	Lockwasher (1/4")	2	3	14					
154087	"O" ring	1	3	15					
67684	Washer, plain	2	3	16	BM-31308	Connection, inlet	4		
					BM-31309	Connection, drain	4		
	INJECTOR				101132	Body, inlet and drain	8	3	25
	All Models				S-1003-1	Connection, drain	4	3	26
					70855	Connection, inlet	4	3	27
BM-71636	Injector assembly	4			9426-2	Gasket, copper	8	3	28
BM-71819	Body and plunger (131590)	4	3	17	70854	Gasket, rubber	8	3	29
146814	Link	4	3	18	70847	Retainer, gasket	8	3	30
148504	Sleeve	4	3	19	70856	Spring, connection	8	3	31
BM-54732	Cup, injector (125145)	4	3	20					
62410	Gasket, cup	4	3	21					
70775	"O" ring, cup	4	3	22					
9337	Spring, injector	4	3	23					
S-165	Capscrew (3/8"-24 x 1-1/2")	8	3	24					
	FUEL TUBING								
	GROUP A								
	C-105, C-105-BI								
163646	Clip, tube	2							
70817	Connection, straight	1							
S-1004-1	Elbow, tubing	1							
BM-36324	Fitting, injector drain	1							
180221	Adapter, coupling	1							
100502	Elbow	1							
S-1027	Tube, connector	1							
BM-49160	Manifold, injector supply	1							
104536	Ferrule, fuel tube	4							
118628	Manifold, fuel supply	1							
70829	Nut, tube	4							
180433	Manifold, fuel drain	1							
144727	Tube, fuel supply	1							
185056	Tube, fuel by-pass	1							

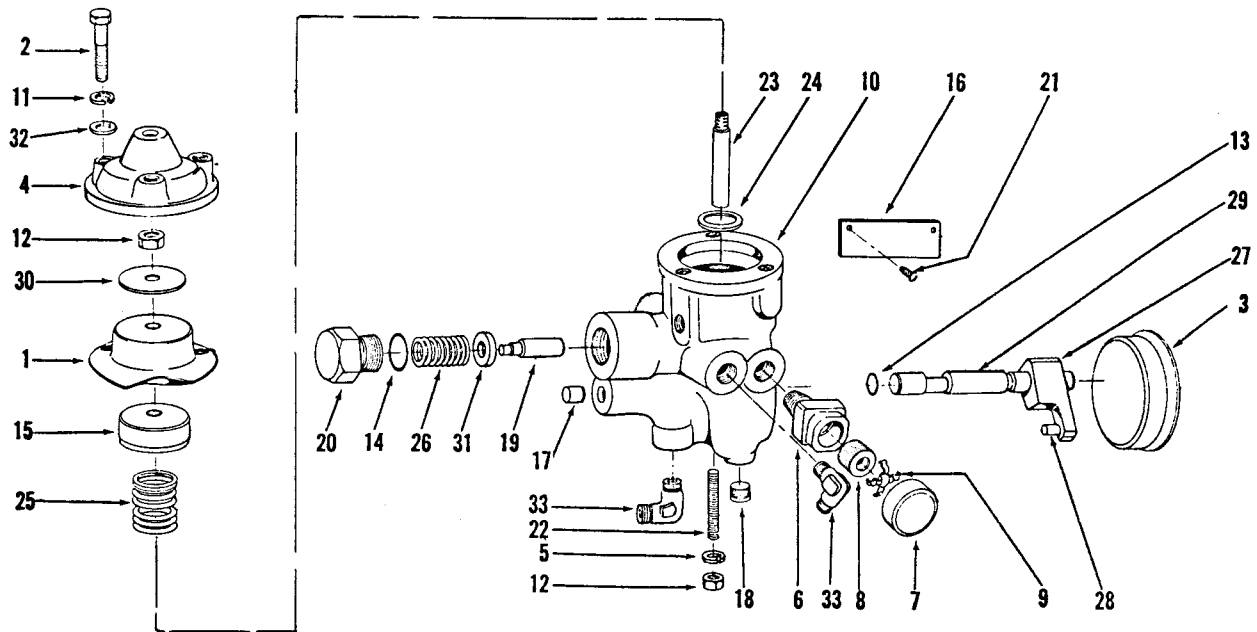
PARTS INDENTED ARE INCLUDED IN THE PART UNDER WHICH THEY ARE INDENTED





Part Number	Part Name	No. Req.	Ref. No.	Part Number	Part Name	No. Req.	Ref. No.
<b>GROUP A All Models</b>				<b>MOUNTING PARTS</b>			
132716	Assembly, corrosion resistor	1		<b>GROUP B</b>			
132717	Body	1	1	C-105, C-105-IP, C-105-BI (only)			
70223	Capscrew, cover to body (5/16"-18 x 1-1/4")	2	2	165228	Bracket	1	10
132718	Cover	1	3	S-921-D	Bushing, pipe	1	
132732	Element	1	4	S-114	Capscrew (1/4"-20 x 3/4")	2	
132730	Gasket	1	5	S-199-A	Capscrew (3/8"-16 x 4")	2	
132719	Plate	2	6	179904	Clamp, hose	4	
139090	Plug, pipe	2	7	179903	Connector, elbow	2	
132731	Spring	1	8	135970	Decal, corrosion resistor	1	
70233	Washer (11/32")			179910	Hose	1	
				179924	Hose	1	
				109003	Lockplate	2	
				S-600	Lockwasher (1/4")	2	
				S-604	Lockwasher (3/8")	2	
				S-908	Plug, pipe (3/8")	1	
				9674-D	Spacer	2	
				130236	Shield, heat	1	
				179901	Valve, shutoff	2	

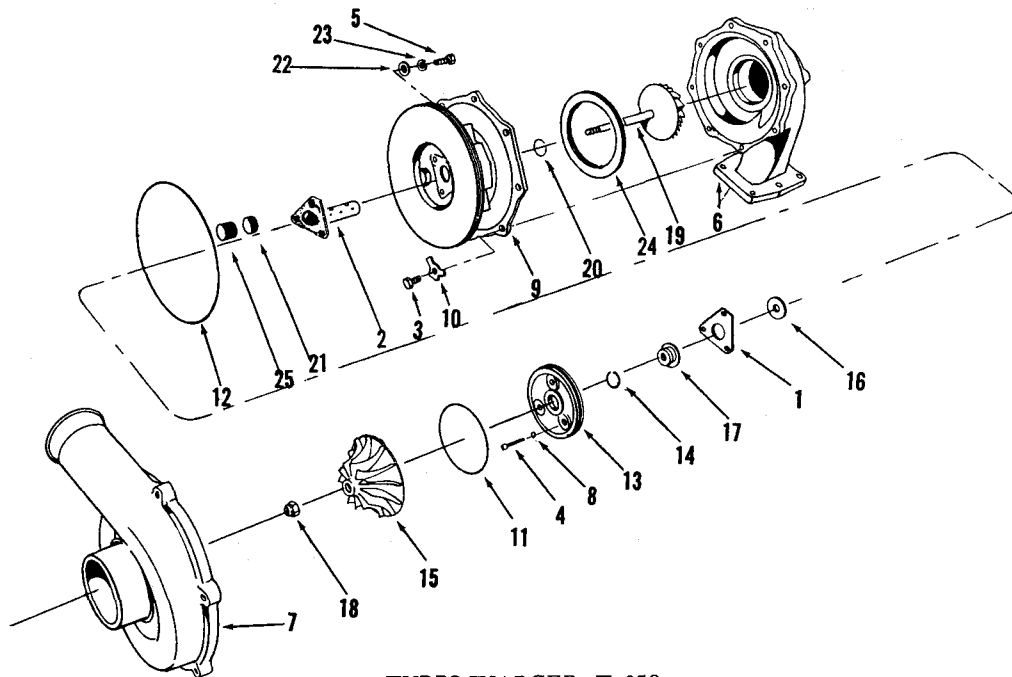
PARTS INDENTED ARE INCLUDED IN THE PART UNDER WHICH THEY ARE INDENTED



ANEROID CONTROL  
(C-140 ONLY)

Part Number	Part Name	No. Req.	Ref. No.	Part Number	Part Name	No. Req.	Ref. No.
BM-69581-AA	Control, aneroid	1			MOUNTING PARTS		
114739	Bellows	1	1				
S-1218	Capscrew, cover to housing	3	2	143950	Adapter hose	2	
114773	Cover, control	1	3	120046	Bracket	1	
114947	Cover, bellows	1	4	S-112	Capscrew (3/8"-16 x 1")	2	
70815	Dyna-seal, adjusting screw	1	5	S-199-A	Capscrew (3/8"-16 x 4")	2	
BM-55534	Filter, air	1		68139	Elbow	1	
125026	Body, filter	1	6	144372	Elbow	2	33
125027	Cap, filter	1	7	HS0501400SS	Hose	1	
118020	Element	1	8	HS0501600SS	Hose	1	
124996	Spring, filter	1	9	HS0400600MS	Hose, manifold	1	
140357	Housing, control	1	10	S-604	Lockwasher (3/8")	2	
S-600	Lockwasher, cover to housing (1/4")	3	11	S-679	Washer, copper (25/64")	3	
108074	Nut, bellows actuating shaft	2	12	S-2760	Washer	1	
114791	"O" ring, plunger	1	13	68361	Spacer	1	
154087	"O" ring, spring retainer	1	14				
114755	Piston, bellows	1	15				
105375	Plate, name	1	16				
114765	Plug, plunger	2	17				
S-911-B	Plug, pipe (1/8")	2	18				
140414	Plunger, pressure	1	19				
114764	Retainer, spring	1	20				
S-2267	Screw, nameplate	2	21				
109919	Screw, adjusting	1	22				
115033	Shaft, bellows actuating	1	23				
114921	Shim, spring	A/R	24				
115084	Spring, bellows	1	25				
114745	Spring, pressure valve	1	26				
BM-69381	Valve, lever and pin	1					
115034	Lever	1	27				
114940	Pin	1	28				
140358	Valve	1	29				
114754	Washer, bellows retainer	1	30				
114795	Washer, pressurizing valve	1	31				
70704	Washer, cover to housing	3	32				

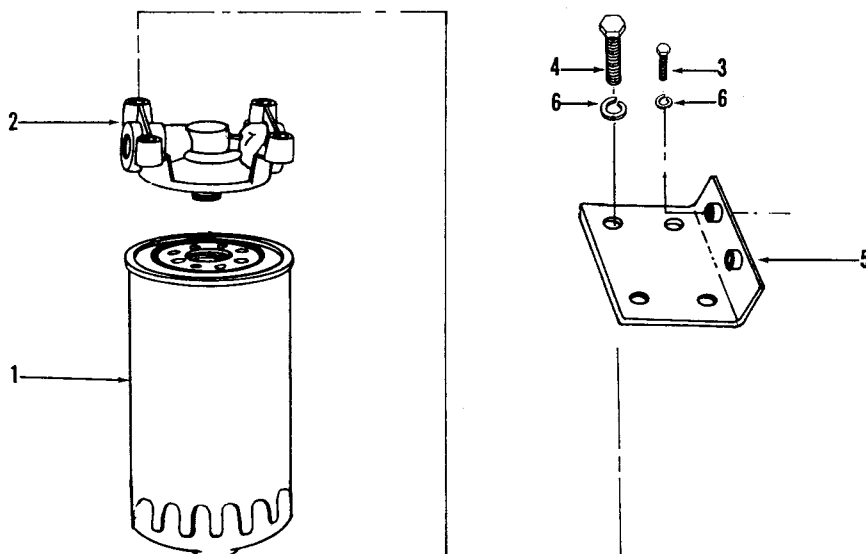
PARTS INDENTED ARE INCLUDED IN THE PART UNDER WHICH THEY ARE INDENTED



TURBOCHARGER T-350  
(C-140 ONLY)

Part Number	Part Name	No. Req.	Ref. No.	Part Number	Part Name	No. Req.	Ref. No.
TURBOCHARGER T-350				MOUNTING PARTS			
AR-674	Turbocharger assembly	1		S-139-A	Capscrew (1/4"-20 x 5/8")	1	
154040	Bearing, outboard thrust	1	1	S-190-C	Capscrew (3/8"-24 x 5/8")	1	
176580	Bearing	1	2	113226	Capscrew (3/8"-24 x 1-3/4")	4	
105737	Capscrew (5/16"-18 x 3/4")	3	3	2603	Clamp	2	
140626	Capscrew, self lock	3	4	69465-A	Clamp	1	
S-107	Capscrew (5/16"-18 x 3/4")	6	5	68425	Clip	3	
152635	Casing, turbine	1	6	BM-63242	Connection assembly	1	
156885	Casing, compressor	1	7	134444	Capscrew (5/16"-18 x 7/8")	5	
8078	Gasket	3	8	134426	Gasket	1	
154588	Housing, bearing	1	9	131480	Lockplate	5	
131480	Lockplate	8	10	BM-63241	Tube and flange assembly	1	
128920	"O" ring	1	11	S-917-A	Elbow	1	
128921	"O" ring	1	12	S-972	Elbow	1	
140284	Plate, oil seal	1	13	S-1040-A	Elbow	1	
S-910-B	Plug, pipe (1/4")	1		111365	Elbow, 45 degree	2	
128919	Ring, seal	1	14	142429	Elbow, 90 degree	1	
BM-63252	Rotor assembly	1		126088	Gasket, turbocharger	1	
*	Wheel, compressor	1	15	63223	Hose	1	
*	Washer	1	16	HS1002020SS	Hose	1	
140286	Sleeve	1	17	HS0602640SS	Hose	1	
*	Nut	1	18	HS0601340MS	Hose	1	
*	Wheel and shaft assembly	1	19	S-604	Lockwasher (3/8")	1	
146411	Ring, seal	1	20	107440	Locknut, turbocharger	4	
176606	Spacer	3	21	66638	Nipple, pipe	1	
S-626	Washer, plain (11/32")	6	22	109660	Nipple	1	
S-605	Lockwasher (5/16")	6	23	60724	Spacer, belt shield	1	
128936	Plate, name	1					
S-2267	Screw, nameplate	4					
152634	Plate, spacing	1	24				
175309	Sleeve	3	25				
* Sold only in balanced rotor assembly							

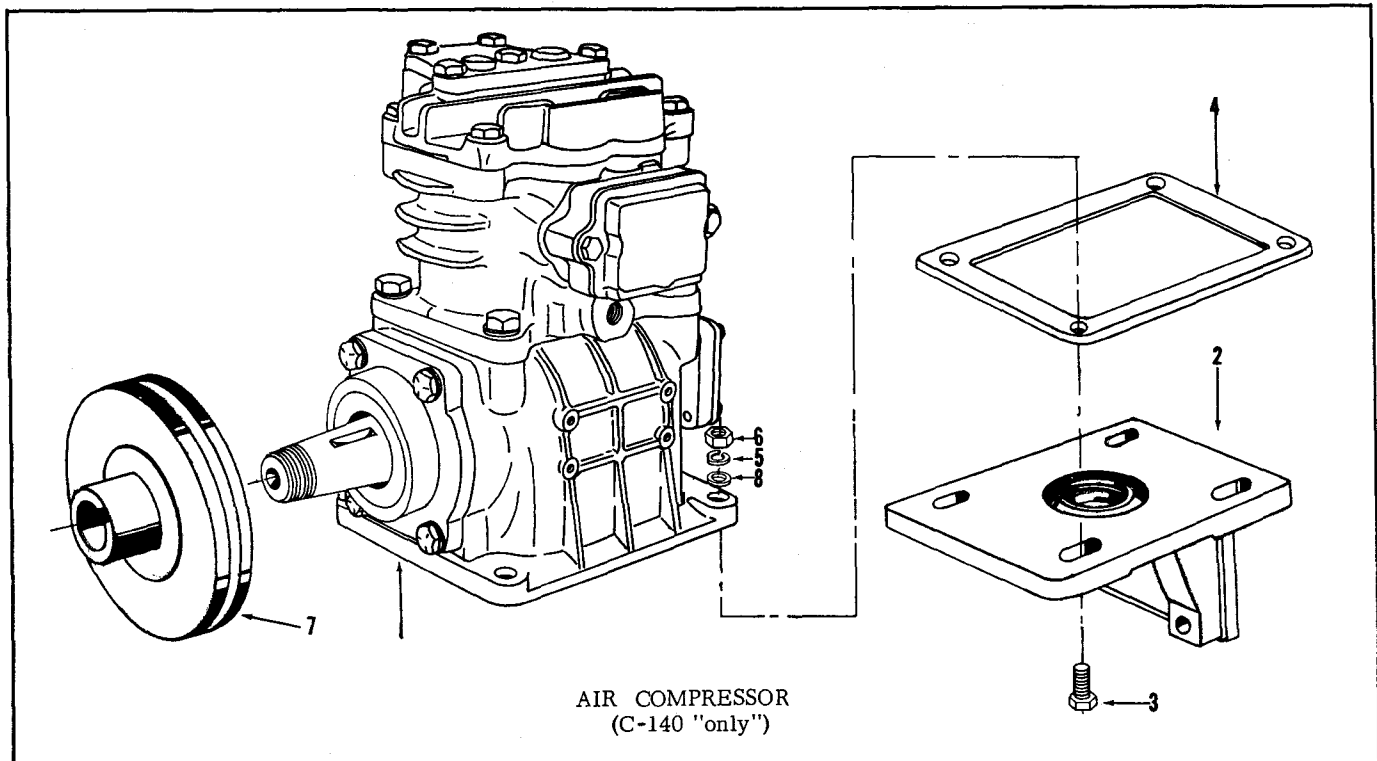
PARTS INDENTED ARE INCLUDED IN THE PART UNDER WHICH THEY ARE INDENTED



TURBOCHARGER OIL FILTER  
(C-140 ONLY)

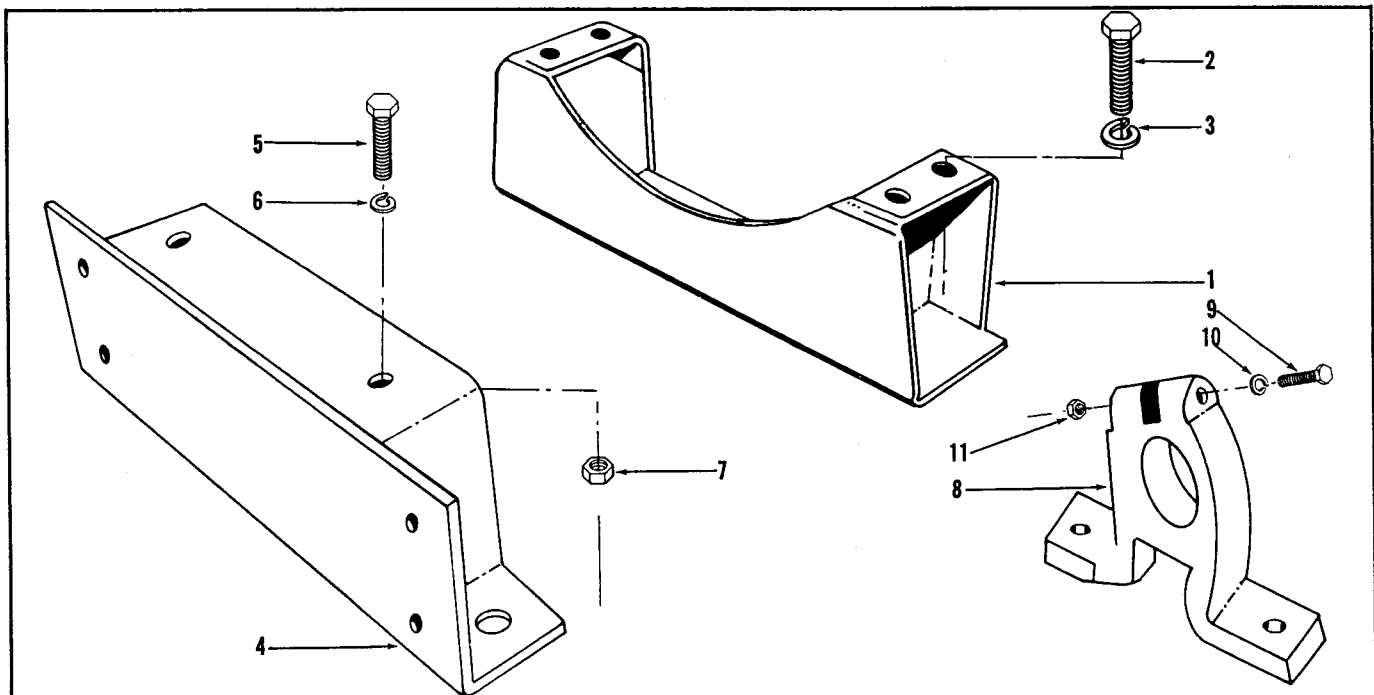
Part Number	Part Name	No. Req.	Ref. No.	Part Number	Part Name	No. Req.	Ref. No.
253243	Filter assembly, turbocharger oil	1					
LF-632	Cartridge	1	1				
153717	Head, filter	1	2				
	MOUNTING PARTS						
S-111	Capscrew (5/16"-18 x 1-1/2")	2	3				
S-112	Capscrew (3/8"-16 x 1")	4	4				
153755	Bracket	1	5				
S-604	Lockwasher (3/8")	6	6				

PARTS INDENTED ARE INCLUDED IN THE PART UNDER WHICH THEY ARE INDENTED



Part Number	Part Name	No. Req.	Ref. No.	Part Number	Part Name	No. Req.	Ref. No.
113860	Air Compressor	1	1				
	MOUNTING PARTS						
134786	Belt	1					
113845	Bracket, air compressor mounting	1	2				
S-155	Capscrew (7/16"-14 x 1-1/2")	1					
S-121-B	Capscrew (7/16"-14 x 2-1/2")	1					
108707	Capscrew (3/8"-16 x 1-1/2")	4	3				
S-1047-A	Elbow	1					
69318	Elbow	1					
113874	Gasket, air compressor	1	4				
113851	Gasket, air compressor mounting	1					
HS0400860MS	Hose	1					
S-604	Lockwasher (3/8")	4	5				
S-610	Lockwasher (7/16")	2					
S-223	Nut (3/8")	4	6				
151938	Pulley, air compressor drive	1	7				
S-602	Washer, plain (13/32")	4	8				

PARTS INDENTED ARE INCLUDED IN THE PART UNDER WHICH THEY ARE INDENTED



FLYWHEEL, RING GEAR, HOUSING, SUPPORT and FRONT ENGINE SUPPORT

Part Number	Part Name	No. Req.	Ref. No.	Part Number	Part Name	No. Req.	Ref. No.
	FLYWHEEL HOUSING				FLYWHEEL HOUSING SUPPORT		
	GROUP A				C-105-IP		
	C-105, C-105-BI, C-140						
11013	Housing, flywheel	1		137269	Support, flywheel housing	1	1
S-140	Capscrew (7/16"-14 x 1-3/4")	4		S-181	Capscrew (5/8"-11 x 1-1/4")	4	2
67163	Capscrew	8		S-603	Lockwasher (5/8")	4	3
9226	Dowel, flywheel housing	2			FRONT ENGINE SUPPORT		
9333	Gasket, flywheel housing	1					
S-608	Lockwasher (1/2")	8		148359	Support, front engine (lower)	1	4
S-610	Lockwasher (7/16")	4		S-139	Capscrew (5/8"-11 x 1-1/4")	2	5
S-670	Washer, plain	8		S-603	Lockwasher (5/8")	2	6
S-622	Washer	4		S-201	Nut (5/8")	2	7
	GROUP B C-105-IP			BM-72365	Support, front engine (upper)		
	Same as Group A except:				(148360)	1	8
103551	Housing, flywheel	1		S-178-A	Capscrew (5/8"-11 x 6-3/4")	1	9
S-109	Capscrew (3/8"-16 x 7/8")	2		S-603	Lockwasher (5/8")	1	10
70346	Cover, barring slot	1		S-201	Nut (5/8")	1	11
S-602	Lockwasher (13/32")	2			FLYWHEEL AND RING GEAR		
S-604	Lockwasher (3/8")	2					
				<p>Flywheels and ring gears have been designed to adapt the Cummins Diesel Engine to hundreds of different installations. For this reason these assemblies are not listed.</p> <p>Your Cummins Distributor will record flywheel assemblies and ring gear part numbers in the front of this book. Use this information when ordering a flywheel or ring gear to replace original equipment.</p>			

PARTS INDENTED ARE INCLUDED IN THE PART UNDER WHICH THEY ARE INDENTED

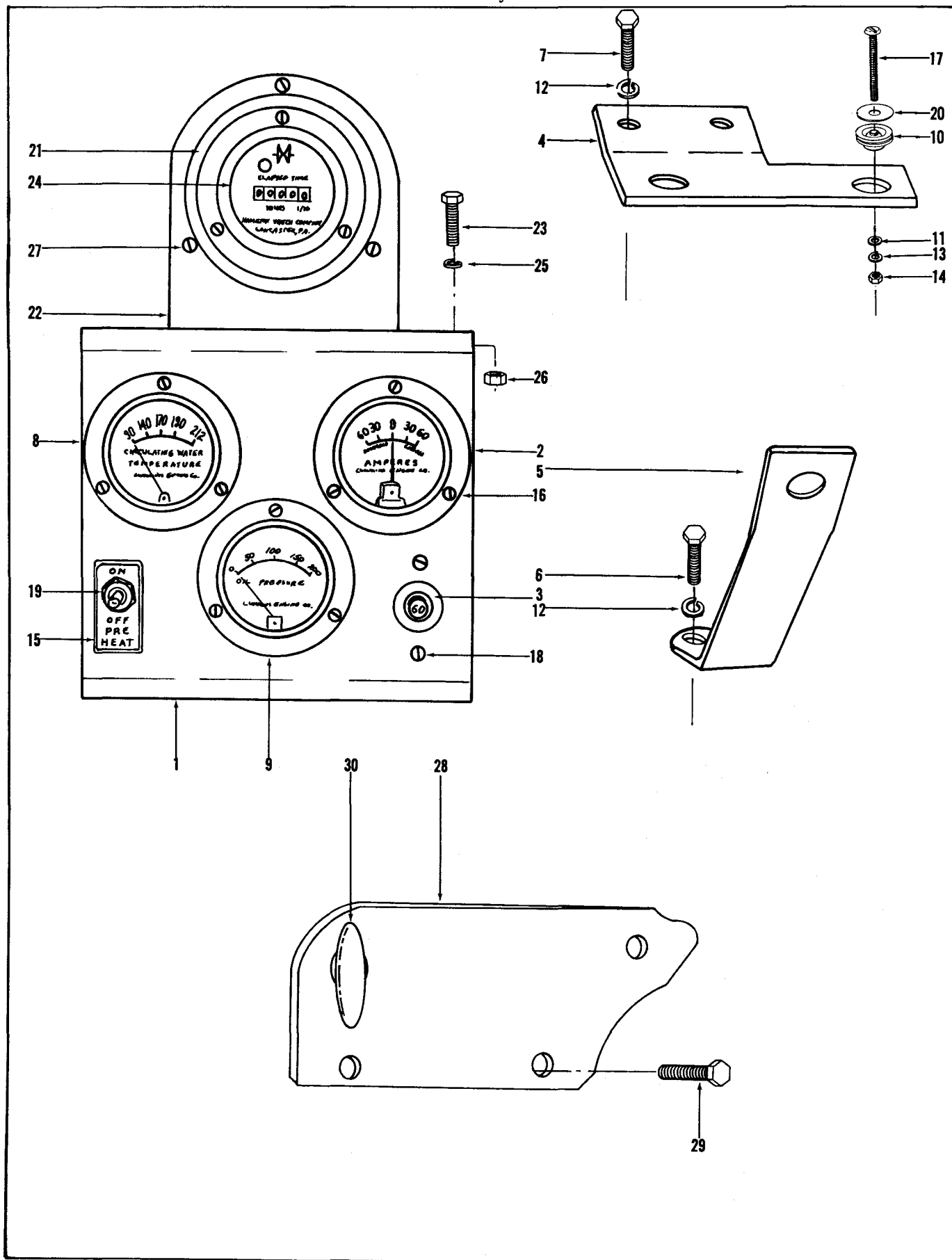


FIG. 4 INSTRUMENT PANEL, HOURMETER, THROTTLE CONTROL and BRACKET.

## CJ-60-B-1

Part Number	Part Name	No. Req.	Fig. No.	Ref. No.	Part Number	Part Name	No. Req.	Fig. No.	Ref. No.
	C-105-IP					GROUP B C-105-BI			
127883	Panel, instrument	1	4	1					
	MOUNTING PARTS				66733	Gauge, oil pressure	1		
66741	Ammeter	1	4	2	102846	Switch, ignition	1		
69486	Breaker, circuit (60)	1	4	3	118847	Switch, magnetic	1		
127884	Bracket, instrument panel (upper)	1	4	4		GROUP C C-105			
127885	Bracket, instrument panel (lower)	1	4	5		Same as Group B except:			
S-102-D	Capscrew (3/8"-16 x 3")	1	4	6	100046	Primer, hand	1		
S-109	Capscrew (3/8"-16 x 7/8")	2	4	7	115007	Light, indicator	1		
S-1059	Coupling	1			66735	Gauge, fuel oil pressure	1		
S-1047-A	Elbow	1			174450	Plate	1		
S-1004-1	Elbow	1			104215	Switch, toggle	1		
41627-B	Gauge, water temperature	1	4	8	68813	Resistor, preheater	1		
66733	Gauge, oil pressure	1	4	9	S-1213	Screw, fillister head	2		
102486	Isolator, vibration	3	4	10	S-600	Washer (1/4")	2		
S-603-A	Washer (7/32")	3	4	11	S-224	Nut (1/4")	2		
S-604	Lockwasher (3/8")	3	4	12		GROUP D C-140			
S-607	Lockwasher (3/16")	3	4	13		Same as Group C except:			
S-259	Nut	3	4	14					
118367	Plate	1	4	15	S-119	Capscrew (5/16"-18 x 1-1/4")	4		
S-1338	Screw	9	4	16		Decal, cold start	1		
103240	Screw	3	4	17	139474	Lockwasher (5/16")	4		
69504	Screw	2	4	18	S-605	Nut (5/16")	4		
102057	Switch	1	4	19	S-221				
102484	Washer (7/32")	3	4	20					
	HOURLMETER								
68880	Adapter, hourmeter	1	4	21					
103317	Bracket, hourmeter	1	4	22					
S-159-A	Capscrew (1/4"-28 x 3/4")	2	4	23					
113309	Hourmeter	1	4	24					
S-600	Lockwasher (1/4")	2	4	25					
S-636	Lockwasher (5/32")	6							
S-270	Nut (1/4")	2	4	26					
70310	Screw	6	4	27					
	THROTTLE CONTROL BRACKET								
128231	Bracket, throttle control	1	4	28					
S-105	Capscrew (3/8"-16 x 3-1/2")	2	4	29					
	THROTTLE CONTROL								
70619	Block, wire clamp	2							
S-188-C	Capscrew (14"-20 x 1/2")	1							
S-190-C	Capscrew (3/8"-24 x 5/8")	1							
70467	Clip	1							
43588-D	Control, push-pull	1	4	30					
S-600	Lockwasher (1/4")	1							
S-604	Lockwasher (3/8")	1							
S-224	Nut (1/4")	1							
69276	Spring, plunger	1							
70208	Screw	2							
111670	Support, oil gauge tube	1							
S-631	Washer, plain (9/32")	1							

PARTS INDENTED ARE INCLUDED IN THE PART UNDER WHICH THEY ARE INDENTED



Part Number	Part Name	No. Req.	Ref. No.	Part Number	Part Name	No. Req.	Ref. No.
	ENGINE ELECTRICAL EQUIPMENT				STARTER MOUNTING		
	Electrical equipment is not manufactured by the Cummins Engine Company, Inc. Complete service for electrical equipment may be obtained from the manufacturers: The Delco-Remy Company at Anderson, Indiana; The Leece-Neville Company at Cleveland, Ohio; The Electric Autolite Company at Toledo, Ohio; or from their service stations. Address of nearest service station may be obtained from the manufacturer.			S-173-A S-603	C-105, C-105-BI, C-140 Capscrew (5/8"-11 x 2-1/4") Lockwasher (5/8")	3 3	
				S-103-A S-603	C-105-IP Capscrew (5/8"-11 x 2") Lockwasher (5/8")	3 3	
	ALL MODELS				MAGNETIC SWITCH, REGULATOR MOUNTING and BRACKET		
113910	Generator	1			C-105-IP		
43812	Motor, starting	1					
115572	Regulator, voltage	1					
124627	Pulley, generator	1					
178571	Belt, generator	1					
	GENERATOR MOUNTING						
	C-105, C-105-BI, C-140						
114039	Baffle, generator	1		118847	Switch, magnetic	1	
113697	Bracket, generator	1		148356	Bracket, regulator and switch	1	
S-102	Capscrew (5/16"-18 x 1")	2		S-149-A	Capscrew, bracket (3/8"-16 x 5")	2	
S-107	Capscrew (5/16"-18 x 3/4")	1		S-114	Capscrew, regulator (1/4"-20 x 3/4")	3	
S-112	Capscrew (3/8"-16 x 1")	4		S-181-B	Capscrew, switch (3/8"-16 x 1/2")	2	
113938	Fan, generator pulley	1		S-600	Lockwasher, regulator (1/4")	3	
113875	Link, generator adjusting	1		S-604	Lockwasher, switch and bracket	4	
S-604	Lockwasher (3/8")	4			GASKET SETS		
S-605	Lockwasher (5/16")	3		BM-72231	Engine gasket set	1	
66747	Spacer	1		BM-70445	Cylinder head gasket set	1	
68251	Spacer, exhaust manifold shield	1		BM-68356	Fuel pump gasket set	1	
	C-105-IP			104597	Nameplate, fuel system	1	
114039	Baffle, generator	1		S-2668	Joint, ball	2	
126173	Bracket, generator	1		S-605	Lockwasher (5/16")	2	
S-103-D	Capscrew (3/8"-16 x 1-1/4")	1		S-248	Nut (5/16")	2	
S-119	Capscrew (5/16"-18 x 1-1/4")	1					
S-134	Capscrew (5/16"-18 x 2")	1					
S-155	Capscrew (7/16"-14 x 1-1/2")	1					
103009	Capscrew (7/16"-14 x 1-1/4")	2					
113938	Fan, generator pulley	1					
112243	Link	1					
S-604	Lockwasher (3/8")	1					
S-605	Lockwasher (5/16")	3					
S-610	Lockwasher (7/16")	3					
S-221	Nut	2					
114126	Spacer, generator	2					
114127	Spacer, generator	1					
S-626	Washer, plain (11/32")	1					

PARTS INDENTED ARE INCLUDED IN THE PART UNDER WHICH THEY ARE INDENTED