



CUMMINS



PARTS



BOOK



PARTS BOOK

FOR THE ENGINE OWNER
BULLETIN 966784-A

CUMMINS

JS • JNS • JT DIESEL ENGINES

CUMMINS ENGINE COMPANY, INC., COLUMBUS, INDIANA

OVERSEAS FACTORIES

Cummins Engine Company Limited
Shotts, Lanarkshire, Scotland

Cables: Cumscot-Shotts, Telex

INTERNATIONAL SALES AND SERVICE

Cummins Diesel International Ltd.

Nassau, Bahamas

Cables: Cumnas

Motores Cummins Diesel do Brasil Ltda.

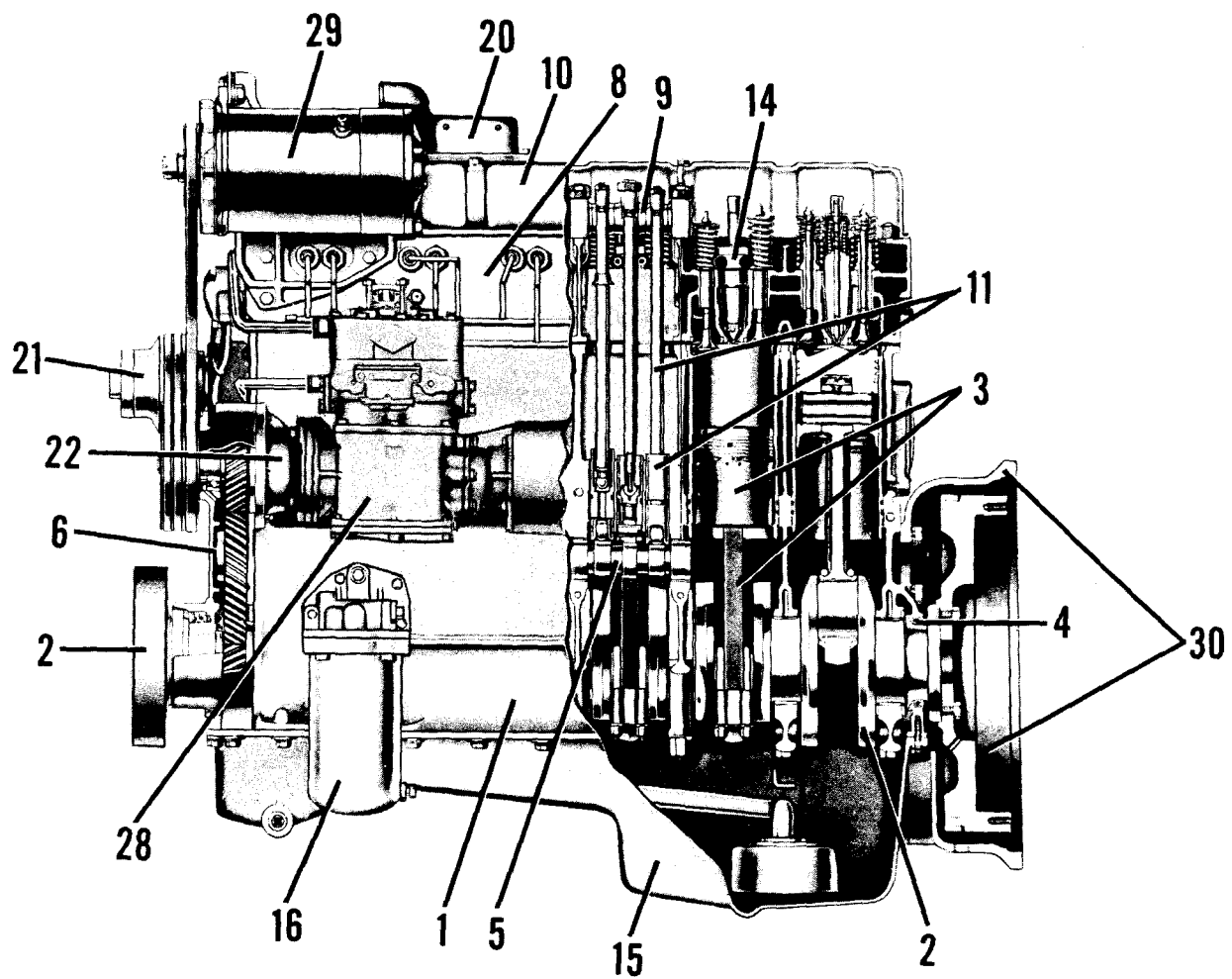
Sao Paulo, Brazil

Cables: Cumbras

European Office

Zurich, Switzerland

Cables: Cumzuri



PARTS BOOK

FOR THE ENGINE OWNER

BULLETIN 966784-A



CUMMINS

JS • JNS • JT DIESEL ENGINES

CUMMINS ENGINE COMPANY, INC., COLUMBUS, INDIANA

OVERSEAS FACTORIES

Cummins Engine Company Limited
Shotts, Lanarkshire, Scotland

Cables: Cumscot-Shotts, Telex

**INTERNATIONAL SALES
AND SERVICE**

Cummins Diesel International Ltd.

Nassau, Bahamas

Cables: Cumnas

Motores Cummins Diesel do Brasil Ltda.

Sao Paulo, Brazil

Cables: Cumbras

European Office

Zurich, Switzerland

Cables: Cumzuri

SPECIAL EQUIPMENT

to be completed by your Cummins Distributor at the time of the INITIAL INSPECTION.

DESCRIPTION	SERVICE PART NUMBER	DESCRIPTION	SERVICE PART NUMBER
BLOCK CYL.	BM.	GAUGE, TEMP.	
CRANKSHAFT		START. MOTOR	
VIB. DAMPER		GENERATOR	
LINER, CYL.		REG. VOLTAGE	
PISTON	BM.	SWITCH, MAG.	
ROD CONN.	BM.	SWITCH, S.P.	
CAMSHAFT		SWITCH, TOG.	
COVER, GEAR		FILTER, LUB.	
HEAD, CYL.	BM.	FILTER, FUEL	
PUMP, LUB.		CLEANER, AIR	
PUMP, WATER		HOOD, AIR CLEAN	
FAN HUB		AFTER CLEAN	
PUMP, FUEL		PRECL'ER, AIR	
VALVE F.P.S.O.		LUB. OIL COOLER	
GOV. HYDRAULIC		FAN	
INJECTOR	BM.	BELT, FAN	
COMPRESSOR		BELT, GEN.	
PUMP, VAC.		BELT, W. P.	
TURBOCHARGER		BELT, SEA W. P.	
SUPERCHARGER		RADIATOR	
MANIFOLD AIR		HEAT EXCHG.	
MANIFOLD EXH.		SEA WA. PUMP	
PAN, OIL		CLUTCH	
TUBE OIL GAUGE	BM.	RED. GEAR	
GA., OIL LEVEL	BM.	REV. GEAR	
FLYWHEEL HOUS.		F. P. TAKE OFF	
FLYWHEEL	BM.	TORQUE CONV.	
RING GEAR		T. C. COOLER	

This book has been specially prepared for Cummins Model _____

Diesel Engine, serial number _____

Signed _____

Authorized Cummins Service Representative

PARTS BOOK

FOR THE ENGINE OWNER
BULLETIN 966784-A



CUMMINS

JS • JNS • JT DIESEL ENGINES

CUMMINS ENGINE COMPANY, INC., COLUMBUS, INDIANA

OVERSEAS FACTORIES

Cummins Engine Company Limited
Shotts, Lanarkshire, Scotland
Cables: Cumscot-Shotts, Telex
Cummins Diesel International Ltd.
Nassau, Bahamas
Cables: Cumnas

Motores Cummins Diesel do Brasil Ltda.
Sao Paulo, Brazil
Cables: Cumbras
European Office
Zurich, Switzerland
Cables: Cumzuri

INTERNATIONAL SALES AND SERVICE

SPECIAL EQUIPMENT

to be completed by your Cummins Distributor at the time of the INITIAL INSPECTION.

DESCRIPTION	SERVICE PART NUMBER	DESCRIPTION	SERVICE PART NUMBER
BLOCK CYL.	BM.	GAUGE, TEMP.	
CRANKSHAFT		START. MOTOR	
VIB. DAMPER		GENERATOR	
LINER, CYL.		REG. VOLTAGE	
PISTON	BM.	SWITCH, MAG.	
ROD CONN.	BM.	SWITCH, S.P.	
CAMSHAFT		SWITCH, TOG.	
COVER, GEAR		FILTER, LUB.	
HEAD, CYL.	BM.	FILTER, FUEL	
PUMP, LUB.		CLEANER, AIR	
PUMP, WATER		HOOD, AIR CLEAN	
FAN HUB		AFTER CLEAN	
PUMP, FUEL		PRECL'ER, AIR	
VALVE F.P.S.O.		LUB. OIL COOLER	
GOV. HYDRAULIC		FAN	
INJECTOR	BM.	BELT, FAN	
COMPRESSOR		BELT, GEN.	
PUMP, VAC.		BELT, W. P.	
TURBOCHARGER		BELT, SEA W. P.	
SUPERCHARGER		RADIATOR	
MANIFOLD AIR		HEAT EXCHG.	
MANIFOLD EXH.		SEA WA. PUMP	
PAN, OIL		CLUTCH	
TUBE OIL GAUGE	BM.	RED. GEAR	
GA., OIL LEVEL	BM.	REV. GEAR	
FLYWHEEL HOUS.		F. P. TAKE OFF	
FLYWHEEL	BM.	TORQUE CONV.	
RING GEAR		T. C. COOLER	

This book has been specially prepared for Cummins Model _____

Diesel Engine, serial number _____

Signed _____

Authorized Cummins Service Representative

PARTS BOOK

FOR THE ENGINE OWNER
BULLETIN 966784-A



CUMMINS

JS • JNS • JT DIESEL ENGINES

CUMMINS ENGINE COMPANY, INC., COLUMBUS, INDIANA

OVERSEAS FACTORIES

Cummins Engine Company Limited
Shotts, Lanarkshire, Scotland

Cables: Cumscot-Shotts, Telex

INTERNATIONAL SALES AND SERVICE

Cummins Diesel International Ltd.

Nassau, Bahamas

Cables: Cumnas

Motores Cummins Diesel do Brasil Ltda.

Sao Paulo, Brazil

Cables: Cumbras

European Office

Zurich, Switzerland

Cables: Cumzuri

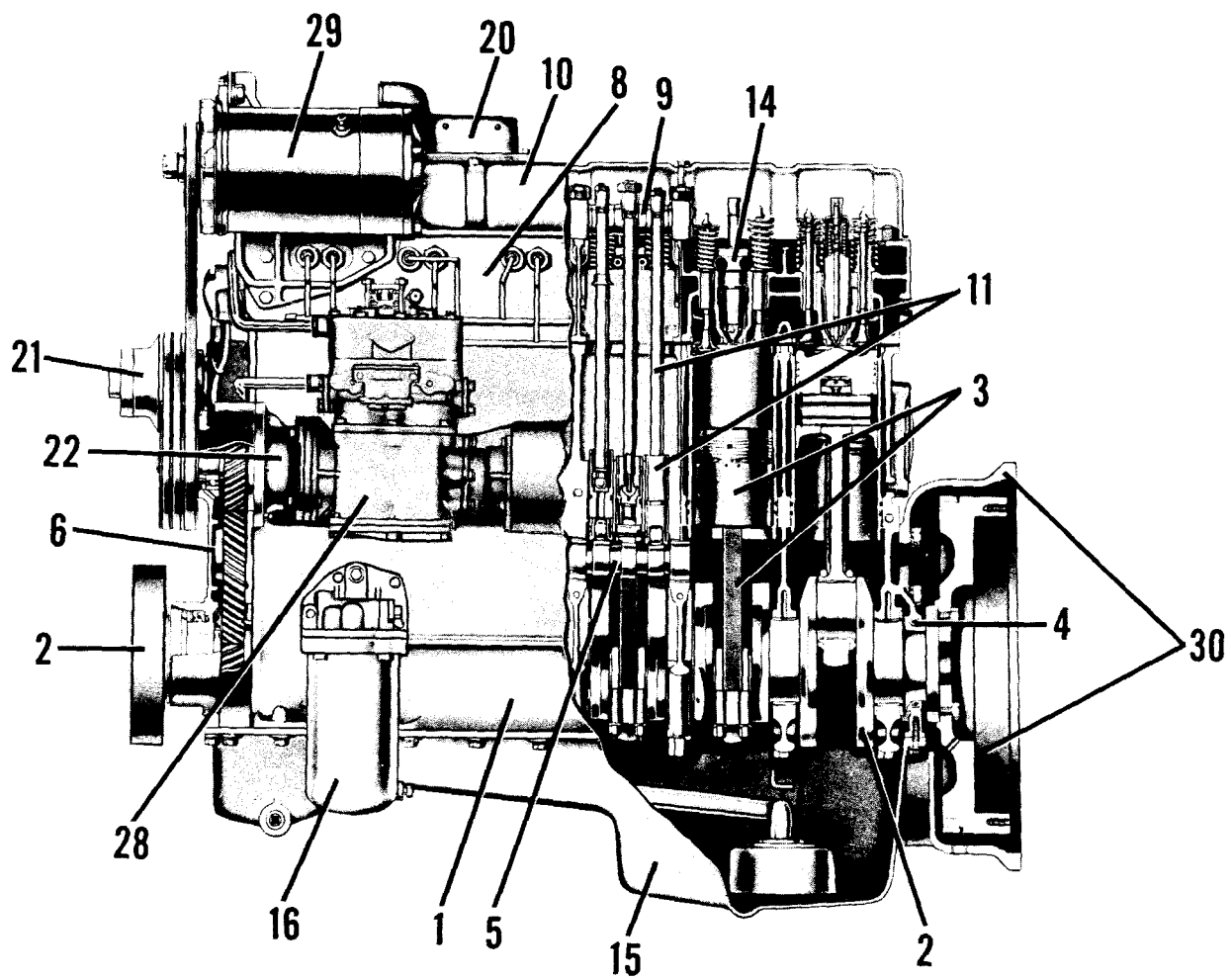


TABLE OF

Illust. No.		Page No.
1.	Cylinder Block	1
2.	Crankshaft and Damper	1-2
3.	Connecting Rods and Pistons	2
4.	Rear Cover	2
5.	Camshaft	2
6.	Gear Cover	5-6
7.	Oil Filler Cap and Breather	5
8.	Cylinder Head	4
9.	Rocker Levers	3
10.	Cylinder Head Cover	5
11.	Tappets and Push Rods	3
12.	Fuel Filter	12
13.	PT Fuel System	11
14.	Injector	12
15.	Oil Pan	6-7
16.	Lubricating Oil Filter	8
17.	Lubricating Oil Pump	6
18.	Lubricating Oil Cooler	7
19.	Water Pump	8-9
20.	Thermostat Housing and Water Piping	9
21.	Fan Bracket and Hub	11
22.	Fuel Pump and Accessory Drive	10
23.	Air Cleaner	13
24.	Supercharger (Gear Driven)	15
25.	Turbocharger (Exhaust Driven)	17
26.	Air Intake Manifold	12-13
27.	Exhaust Manifold	12
28.	Air Compressor	14-15
29.	Electrical Equipment	14
30.	Flywheel and Flywheel Housing	14

CUMMINS

INSTRUCTIONS

for ordering parts

Genuine Cummins Parts and service facilities are world-wide. There are nearly 500 Cummins Distributors and Dealers conveniently located in the principal cities of the United States and Canada, and almost 200 Distributors situated elsewhere throughout the free world. Each distribution outlet is thoroughly equipped with technical data, factory-trained mechanics, modern equipment and a full, adequate stock of Genuine Cummins Parts.

For quicker and better service, your parts requirements should be ordered from your nearest authorized Cummins Distributor or Dealer. At any of the locations prompt, intelligent, courteous service is a basic trademark. Each is ready and eager to help in every possible way through personal contact or through the mail—at your convenience.

The satisfactory ordering and receiving of parts by the purchaser is greatly dependent upon the proper use of available information. In order that all avoidable errors may be eliminated, the following instructions are offered as the purchaser's guide:

1. Write your order clearly, using a typewriter if possible.
2. Be sure to list the correct part number. If in doubt as to the correct part number, state the model and serial number of the engine on which the part is to be used. Part numbers are usually located in various places on the part itself.
3. When possible, arrange your purchase order in part number numerical sequence.
4. Always specify shipping instructions—"Best Way" is satisfactory if you have no preference.
5. State your company name and shipping address clearly.

Genuine Cummins Parts mean QUALITY! They're designed and engineered to fit best in your Cummins Diesel. Each part is made of the highest quality material—on the most accurate of machines—by the top craftsmen of the trade.

You can be sure a Genuine Cummins Part will fit better—do the job better—lessen the chances of costly breakdown. When you buy replacement parts, buy quality. Buy Genuine Cummins Parts!

YOU OWN THE BEST . . . REPAIR WITH THE BEST

Illust. Ref. No.	Cummins Part No.	Part Name	No. Req. Per Eng.	Illust. Ref. No.	Cummins Part No.	Part Name	No. Req. Per Eng.
---------------------	---------------------	-----------	----------------------	---------------------	---------------------	-----------	----------------------

CYLINDER BLOCK

Figure 1

GROUP A—Model JT

	BM-56565	Block assembly, cylinder (116652)	1
1	100673	Bushing, camshaft	6
2	122936	Capscrew, cylinder head (short)	7
3	122937	Capscrew, cylinder head (long)	7
4	104293	Capscrew, main bearing	14
	107947	Cock, drain	1
5	68445	Dowel, cylinder head to block	2
6	120830	Dowel, main bearing cap	2
7	68568	Dowel, oil pan to block	1
8	70645	Dowel, oil pan to block	1
9	70653	Dowel, gear case cover	1
10	60408	Dowel, gear case cover	1
	69236	Dowel, lubricating pump to block	2
11	60533	Lockplate, main bearing capscrew	14
12	112076	Plug, pipe, rear water drain	1
13	66351	Plug, pipe, Allen head	4
14	69901	Plug, pipe, hex head	3
15	S-911-B	Plug, pipe, oil gallery	9
16	S-910-B	Plug, pipe, oil gallery to tappet	2
17	S-915-A	Plug, pipe	1
18	S-935-B	Plug, pipe water drain	1
	S-962	Plug, pipe water header	1
19	S-995	Plug, pipe	1
	113995	Washer, plain, cylinder head capscrew	14
20	S-109	Capscrew, water header end cover	2
	S-109	Capscrew, water header side cover	2
21	S-106-A	Capscrew, oil transfer connection	4
22	121687	Connection, oil transfer	1
23	65473	Cover, water header end	1
24	100902	Cover, water header side	1
25	65474	Gasket, water header end cover	1
26	68624	Gasket oil transfer connection (lower)	1
27	68625	Gasket, oil transfer connection (upper)	1
28	68619	Gasket, water header side cover	1
	S-604	Lockwasher, water header side cover	2
29	S-604	Lockwasher, water header end cover	2
30	S-605	Lockwasher, oil transfer connection	4
31	120930	Liner, cylinder	6
32	68547	Packing, cylinder liner	12

GROUP B—Model JS

Same as group A except parts as shown below:

	BM-56564	Block assembly, cylinder (116655)	1
	60408-A	Dowel, gear case cover	1
35	69737	Capscrew, idler shaft	3
31	120920	Liner, cylinder	6

CYLINDER BLOCK (Cont'd)

GROUP B—Model JS (Cont'd).

36	S-611-A	Lockwasher, idler gear shaft	3
37	43245-1	Shaft, supercharger idler gear	1

GROUP C—Model JNS

Same as group A except parts shown below:

	BM-56564	Block assembly, cylinder (116655)	1
	60408-A	Dowel, gear case cover	1
35	69737	Capscrew, idler shaft	3
36	S-611-A	Lockwasher, idler gear shaft	3
37	136803	Shaft, supercharger idler gear	1

CRANKSHAFT AND MAIN BEARINGS

Figure 2

GROUP A—(All Models)

	BM-49786	Crankshaft assembly	1
1	106071	Crankshaft (tapered)	1
2	43213-1	Gear, crankshaft pinion	1
3	S-331	Key, crankshaft gear	1
	BM-27522	*Main bearing set	1
4	44297	*Bearing, main (lower)	7
5	43214	*Bearing, main (upper)	7
6	124922	Pin, thrust ring to bearing groove	4
6	S-3193	Pin, thrust ring to bearing groove	4
7	68558	Ring, crankshaft thrust	4
8	S-118-A	Capscrew, oil slinger	2
9	S-153-B	Capscrew, retainer	1
10	131309	Hub, vibration damper (requires 70522 oil seal)	1
11	70076	Lockplate, oil slinger	2
12	S-613	Lockwasher, retainer	1
13	108170	Retainer, crankshaft	1
14	70077	Slinger, crankshaft oil	1

*Main bearings and main bearing sets may be purchased in Standard, .010", .020", .030", .040" undersize. When ordering bearings always state the size required.

PARTS INDENTED ARE INCLUDED IN THE PART UNDER WHICH THEY ARE INDENTED

Illust. Ref. No.	Cummins Part No.	Part Name	No. Req. Per Eng.
---------------------	---------------------	-----------	----------------------

VIBRATION DAMPER

Figure 3

GROUP A—All Models

1	121238	Damper, vibration (rubber bonded)	1
Mounting Parts			
2	69793	Capscrew, damper to hub	6
3	68909-1	Lockplate, damper	3

CONNECTING RODS AND PISTONS

Figure 4

GROUP A—Model JS

1	BM-56486	Connecting rod and bushing assembly	6
2	110275	Bolt, "U", connecting rod	12
3	68574	Bushing, piston pin	12
4	60358	Lockplate, connecting rod nut	12
5	S-265	Nut, connecting rod bolt	24
6	127730	Bearing, connecting rod	12
	BM-52600	Set, piston ring	1
7	109410	Ring, compression (chrome)	6
8	68788	Ring, compression (plain)	12
9	118680	Ring, oil control	6
	BM-55330	Piston and pin assembly	6
10	123610	Pin, piston	6
11	126410	Piston	6
12	S-16256	Ring, piston pin snap	12

GROUP B—Model JT

Same as group A except parts shown below:

1	BM-56854	Connecting rod and bushing	6
3	117270	Bushing, piston pin	12
	BM-61770	Set, piston ring	1
9	126480	Ring, oil control (4 section) (Form-Flex)	6
	BM-59770	Piston and pin assembly	6
11	130190	Piston	6

CONNECTING RODS AND PISTONS (Cont'd)

Figure 4

GROUP C—Model JNS

Same as group A except parts shown below:

	BM-56846	Connecting rod and bushing assembly	6
	BM-55340	Piston and pin assembly	6
3	117270	Bushing, piston pin	12
11	126430	Piston	6

REAR COVER

Figure 5

GROUP A—(All Models)

1	106203	Cover, rear	1
Mounting Parts			
2	S-106-A	Capscrew, rear cover	2
3	S-111	Capscrew, rear cover	6
4	102151	Gasket, rear cover	1
5	S-605	Lockwasher, rear cover capscrew	8
6	113410	Seal, rear cover oil	1

CAMSHAFT

Figure 6

GROUP A—Model JT, JS

	BM-54813	Camshaft assembly	1
1	121720	Bearing, camshaft front	1
2	121580	Camshaft	1
3	20836	Gear, camshaft	1
4	S-302	Key, Camshaft gear	1

Mounting Parts

5	S-112	Capscrew, camshaft bearing	3
6	S-604	Lockwasher, bearing capscrew	3

GROUP B—Model JNS

Same as group A except parts shown below:

	BM-55793	Camshaft assembly	1
2	121120	Camshaft	1
4	S-302	Key, camshaft gear	1

WHEN ORDERING PARTS ALWAYS GIVE ENGINE SERIAL NUMBER

Illust. Ref. No.	Cummins Part No.	Part Name	No. Req. Per Eng.	Illust. Ref. No.	Cummins Part No.	Part Name	No. Req. Per Eng.
---------------------	---------------------	-----------	----------------------	---------------------	---------------------	-----------	----------------------

TAPPETS AND PUSH RODS

Figure 7

GROUP A—(All Models)

1	BM-40616	Tappet assembly, injector (113745)	6
2	108187	Lockwire, injector tappet pin	6
3	113748	Pin, injector tappet roller	6
4	60521	Roller, injector tappet	6
9	108156	Sleeve, valve tappet guide	6
5	BM-40615	Tappet assembly, intake and exhaust valve (113746)	12
6	108186	Lockwire, valve tappet pin	12
7	113749	Pin, valve tappet roller	12
8	69027	Roller, valve tappet	12
9	108156	Sleeve, valve tappet guide	12
10	BM-46364	Rod, intake and exhaust push (112695)	12
11	BM-46363	Rod, injector push (112699)	6
Mounting Parts			
12	108158	Guide, tappet	18
	64482	Lockwire	2
	67089	Lockwire	6
13	S-684	Washer, tappet guide	18

NOTES

ROCKER LEVERS, SHAFT AND BEARINGS

Figure 8

GROUP A—Model JS

	BM-39553	Lever Assembly, exhaust rocker	6
1	BM-39549	Lever and bushing assembly (107718)	6
2	60487-S	Bushing, exhaust rocker lever	6
3	107719	Nut, rocker lever adjusting screw	6
4	103863	Screw, rocker lever adjusting	6
	BM-40908	Lever assembly, injector rocker	6
5	BM-40387	Lever bushing and socket assembly	6
6	103864	Socket, injector rocker lever	6
	BM-40386	Lever and bushing assembly (107747)	6
7	60486	Bushing, injector rocker lever	6
8	S-232	Nut, injector rocker lever adjusting screw	6
9	7199-3	Screw, injector rocker lever adjusting	6
	BM-39555	Lever assembly, intake rocker	6
10	BM-39550	Lever and bushing assembly (107717)	6
11	60487-S	Bushing, intake rocker lever	6
3	107719	Nut, rocker lever adjusting screw	6
4	103863	Screw rocker lever adjusting	6
12	114452	Bearing, rocker shaft (No. 3 and No. 5 position)	2
13	114450	Bearing, rocker shaft (No. 4 position)	1
14	114451	Bearing, rocker shaft (No. 1 and No. 7 position)	2
15	114453	Bearing, rocker shaft (No. 2 and No. 6 position)	2
16	BM-41693	Shaft, rocker lever	1
Mounting Parts			
17	S-150	Capscrew, bearing to cylinder head	7

GROUP B—Model JNS, JT

Same as Group A except for parts shown below:

	BM-39554	Lever assembly, exhaust rocker	6
1	BM-39551	Lever and bushing assembly (123984)	6
2	104439	Bushing, exhaust rocker lever	6
	BM-39556	Lever assembly, intake rocker	6
10	BM-39552	Lever and bushing assembly (123983)	6
11	104439	Bushing, intake rocker lever	6

PARTS INDENTED ARE INCLUDED IN THE PART UNDER WHICH THEY ARE INDENTED

Illust. Ref. No.	Cummins Part No.	Part Name	No. Req. Per Eng.	Illust. Ref. No.	Cummins Part No.	Part Name	No. Req. Per Eng.
---------------------	---------------------	-----------	----------------------	---------------------	---------------------	-----------	----------------------

CYLINDER HEAD TWO VALVE

Figure 9

GROUP A—Model JS

	BM-43591	Cylinder head assembly (complete with valves)	1
1	S-2037	Half-collet, valve	24
2	105988	Spring, valve	12
3	70670	Valve, exhaust	6
4	68569	Valve, intake	6
5	BM-43590	Cylinder head assembly (114732)	1
6	105985	Guide, valve	12
7	105987	Guide, valve spring	12
8	70668	Insert, valve seat	12
9	6103	Pin, dowel, intake manifold	2
10	69233	Pin, dowel, oil line	1
11	60488	Pin, dowel, rocker shaft bearing	2
12	S-911-B	Plug, pipe (1/8")	3
13	70459	Plug, fuse (1/8")	1
14	67861	Plug, pipe (1/2")	3
15	S-995	Plug, pipe (3/4")	15
16	108019	Sleeve, injector	6
17	60501	Stud, manifold	6
18	60498	Retainer, valve spring, intake and exhaust	12
	68867	Plate, injector and valve set	1
	S-2254	Plate, firing order	1
	S-2286	Screw, drive	4
	S-2267	Screw, drive	2
19	63876-1	Ventilator	3
Mounting Parts			
20	122936	Capscrew, cylinder head (short)	7
21	122937	Capscrew, cylinder head (long)	7
	BM-51649	Gasket assembly, cylinder head	1
22	131168	Ferrule, cylinder head gasket	24
23	110902	Gasket, cylinder head	1
24	114326	Grommet (pear shaped) cylinder head gasket	1
25	115984	Grommet, cylinder head (stud)	13
26	115985	Ring, push tube openings	6
27	132705	Grommet, cylinder head gasket	24
	68445	Pin, dowel, cylinder head to block	1
	113995	Washer, plain, cylinder head capscrew	14

CYLINDER HEAD FOUR-VALVE

Figure 10

GROUP A—Model JT,

	BM-54969	Cylinder head assembly (complete with valves)	1
1	119819	Half-collet, valve	48
2	120089	Spring, valve	24
3	113477	Valve, exhaust	12
4	44748	Valve, intake	12
5	BM-54968	Cylinder head assembly (124880)	1
6	119806	Retainer, valve spring	24
7	105292	Guide, valve spring	24
8	70849	Guide, crosshead valve	12
9	105293	Guide, intake and exhaust valve	24
	70843	Insert, exhaust and intake valve	24
	60488	Pin, dowel, rocker shaft	2
	105889	Pin, dowel, intake manifold	3
	69233	Pin, dowel, oil line	1
	S-995	Plug, pipe (3/4")	12
	S-915-A	Plug, pipe	6
	70459	Plug, fuse (1/8")	1
	S-911-B	Plug, pipe (1/8")	3
	67622	Plug, pipe	1
10	108019	Sleeve, injector	6
Mounting Parts			
	122936	Capscrew, cylinder head (short)	7
	122937	Capscrew, cylinder head (long)	7
11	44737	Crosshead, valve (left)	6
12	44738	Crosshead, valve (right)	6
	BM-51649	Gasket assembly, cylinder head	1
	131168	Ferrule, cylinder head gasket	24
	110902	Gasket, cylinder head	1
	114326	Grommet (pear shaped) cylinder head gasket	1
	115984	Grommet, cylinder head (stud)	13
	115985	Ring, sealing ring, push tube	6
	132705	Grommet, cylinder head gasket	24
13	S-273	Nut, crosshead adjusting	12
	68445	Pin, dowel, cylinder head to block	2
14	67307	Screw, crosshead adjusting	12
	112729	Retainer, valve crosshead	12
	113995	Washer, plain, cylinder head	14

WHEN ORDERING PARTS ALWAYS GIVE ENGINE SERIAL NUMBER

Illust. Ref. No.	Cummins Part No.	Part Name	No. Req. Per Eng.	Illust. Ref. No.	Cummins Part No.	Part Name	No. Req. Per Eng.
---------------------	---------------------	-----------	----------------------	---------------------	---------------------	-----------	----------------------

CYLINDER HEAD FOUR-VALVE (Cont'd)

Figure 10

GROUP B—Model JNS

Same as group A except parts shown below:

	BM-54939	Cylinder head assembly (complete with valves)	1
5	BM-54938	Cylinder head assembly (124881)	1
	103847	Stud, exhaust manifold	6
	63876-1	Ventilator	3

CYLINDER HEAD COVER

Figure 11

GROUP A—All Models

1	132390	Cover, cylinder head (oil filler mounted in "L" position.)	1
2	101322	Cap, filler	1
3	S-104	Capscrew, cylinder head cover	4
4	128378	Gasket, cylinder head cover	1
	BM-50750	Seal assembly, cylinder head cover capscrew	1
5	70415	"O" ring	4
6	115231	Washer, cupped	4

CRANKCASE BREATHER

Figure 12

GROUP A—All Models

	BM-53533	Breather assembly, crankcase	1
1	105021	Baffle, breather	1
2	122133	Body, breather	1
3	S-167-A	Capscrew, cover to body	3
4	122136	Cover, breather	1
5	111042	Element, breather	1
6	122135	Gasket, cover to body	1
7	S-600	Lockwasher, cover to body	3
8	105019	Screen, breather	2
9	S-631	Washer, cover to body	3

Mounting Parts

	S-181-A	Capscrew, clamp	1
	69911-A	Clamp, vent tube	1
	S-604	Lockwasher, clamp	1
	68038	Support	1
	BM-53514	Tube, vent	1
	68562	Flange	1
	S-3101	"O" ring	1

GEAR COVERS AND PLATES

Figure 13

GROUP A—Model JT,

1	S-104	Capscrew, gear cover to block	1
2	S-120	Capscrew, gear cover to block	3
3	S-103-D	Capscrew, gear cover to block	4
4	S-117	Capscrew, gear plate to gear cover	2
5	S-141	Capscrew, gear cover to block	2
5	S-141	Capscrew, gear cover to accessory drive housing	4
4	S-117	Capscrew, gear plate to block	1
6	S-109	Capscrew, gear plate to block	2
	S-119	Capscrew, accessory drive to gear cover	1
7	108121	Cover, gear	1
	69857	Dowel, accessory drive to gear plate	1
	60408	Dowel (master)	1
	70653	Dowel (diamond)	1
8	112933	Gasket, gear plate to block	1
9	112917	Gasket, plate to gear cover	1
	S-604	Lockwasher, gear cover and plate mounting capscrews	18
	S-605	Lockwasher, accessory drive to gear cover	1
10	112850	Plate, gear	1
	S-910-B	Plug, pipe	1
	S-964-E	Plug, pipe	1
	S-908	Plug, pipe	1
11	106276	Seal, accessory drive oil	1
12	70522	Seal, crankshaft oil	1
13	S-622	Washer, plain, gear plate to block	2

GROUP B—Model JS, JNS

Entirely new group:

14	S-115	Capscrew, supercharger bearing support	3
15	S-112	Capscrew, gear plate to block	1
	S-119	Capscrew, accessory drive to gear cover	1
16	S-193	Capscrew, supercharger idler gear shaft	1
1	S-104	Capscrew, gear cover to block	1
17	S-197	Capscrew, gear cover to block	1
17	S-197	Capscrew, gear cover to supercharger	3
5	S-141	Capscrew, gear cover to block	6
5	S-141	Capscrew, gear cover to supercharger	4
5	S-141	Capscrew, gear cover to accessory drive housing	4
6	S-109	Capscrew, gear plate to block	2
2	S-120	Capscrew, gear plate to block	2

PARTS INDENTED ARE INCLUDED IN THE PART UNDER WHICH THEY ARE INDENTED

Illust. Ref. No.	Cummins Part No.	Part Name	No. Req. Per Eng.
---------------------	---------------------	-----------	----------------------

GEAR COVERS AND PLATES (Cont'd)

Figure 13

GROUP B—(Cont'd)

18	108260	Cover, gear	1
	69857	Dowel, accessory drive to gear plate	1
	60408	Dowel (master)	1
	70653	Dowel (diamond)	1
8	112933	Gasket, gear plate to block	1
19	112916	Gasket, gear plate to cover	1
20	68579	Gasket, supercharger bearing support	1
21	S-604	Lockwasher, supercharger bearing support	3
	S-605	Lockwasher, accessory drive bearing support	1
	S-604	Lockwasher, gear cover and plate mounting cap screws	21
22	S-608	Lockwasher, supercharger idler gear shaft	1
23	68642	"O" Ring, supercharger idler spindle	1
	70415	"O" Ring, supercharger lubricating tube	2
24	112849	Plate, gear	1
	S-908	Plug, pipe	1
	69901	Plug, pipe	1
	S-911-B	Plug, pipe	1
11	106276	Seal, accessory drive oil	1
12	70522	Seal, crankshaft oil	1
25	BM-20484	Support, supercharger bearing	1
26	68578	Bushing, supercharger idler hub	1
27	68627	Support, supercharger idler spindle	1
	113030	Tube and Clip assembly, supercharger lubricating	1

LUBRICATING OIL PUMP

Figure 14

GROUP A—All Model

	BM-44542	Pump assembly, lubricating	
1	BM-44541	Housing and bushing, assembly (102341) lubricating pump	1
2	68586	Bushing, lubricating pump housing drive shaft	1
3	68585	Dowel, cover to housing	1
4	68595	Dowel, cover to housing	1
5	BM-31887	Cover and bushing assembly, (100138) lubricating pump	1
2	68586	Bushing, lubricating pump cover, drive shaft	1
6	BM-20443	Gear and bushing assembly, impeller (68589) (idler)	1

Illust. Ref. No.	Cummins Part No.	Part Name	No. Req. Per Eng.
---------------------	---------------------	-----------	----------------------

LUBRICATING OIL PUMP (Cont'd)

Figure 14

GROUP A—(Cont'd)

2	68586	Bushing, lubricating pump driven gear	2
7	BM-20442	Idler gear and bushing assembly, lubricating pump drive (43828-1)	1
8	69510	Bushing, lubricating pump idler gear	1
9	100569	Capscrew, socket head	1
10	S-115	Capscrew, cover to housing	3
11	S-147-B	Capscrew, cover to housing	1
12	69507	Capscrew, socket head, idler gear retainer	3
13	100570	Gasket, cover to housing	1
14	43240	Gear, lubricating pump drive	1
15	68588	Gear, lubricating pump impeller (driven)	1
16	67089	Lockwire	5
17	68908-A	Lockplate, cover to body (21/64")	4
18	100571	Retainer, idler gear	1
19	69509	Shaft, idler gear	1
20	68590	Shaft, lubricating pump drive	1
21	68603	Shaft, idler impeller gear	1
22	69508	Washer, lubricating pump thrust	1

Mounting Parts

23	S-103-D	Capscrew, pump to block	1
24	S-112	Capscrew, pump to block	2
25	69236	Dowel, pump to block	2
26	68908	Lockplate, pump to block cap screw	3

OIL PANS

Figure 15

GROUP A—All Models

1	104988	Pan, oil (oil gauge bracket mounted on fuel pump side) (rear sump)	1
2	102170	Bracket, oil suction bell (R.H.)	1
3	102244	Bracket, oil suction bell (L.H.)	1
4	S-115	Capscrew, suction flange	3
5	S-102	Capscrew, bell bracket to block	2
6	S-107	Capscrew, drain tube flange	2
7	S-117	Capscrew, strap to block	1
8	68724	Capscrew, drain tube strap	1
9	S-169-A	Capscrew, pan to block	4
10	S-103-D	Capscrew, pan to block	23
	70645	Dowel, pan to block	1
	68568	Dowel, pan to block	1

WHEN ORDERING PARTS ALWAYS GIVE ENGINE SERIAL NUMBER

Illust. Ref. No.	Cummins Part No.	Part Name	No. Req. Per Eng.
---------------------	---------------------	-----------	----------------------

**OIL PANS
(Cont'd)**

Figure 15

GROUP A—(Cont'd)

11	102140	Gasket, suction flange	1
12	20842	Gasket, oil pan	1
13	S-3050	Gasket, drain plug	2
14	102141	Lockplate, suction screen cover support	1
15	117559	Lockplate, bell bracket to block	2
16	S-604	Lockwasher, pan to block	27
17	109558	Nut, huglock	2
18	S-205-A	Nut, drain tube strap	1
19	S-502	Pin, cotter	1
20	S-915-A	Plug, pipe	1
21	67218	Plug, drain	2
22	S-924	Plug, pipe	2
23	43226-2	Screen, oil suction	1
24	68567-1	Strap, drain tube	1
25	69171-1	Support, suction screen	1
26	BM-44485	Tube assembly, suction (102153)	1
27	43229	Tube assembly, drain to pan	1
28	109557	Washer, plain	4
29	S-631	Washer, plain	2
30	S-699	Washer, pan to block	3
31	S-602	Washer, pan to block	24

**OIL GAUGE BRACKETS,
TUBES AND DIPSTICKS**

Figure 16

GROUP A—All Models

1	101240	Bracket, oil gauge	1
2	BM-47951	Dipstick, oil gauge	1
3	BM-51775	Tube, oil gauge	1
Mounting Parts			
4	S-102	Capscrew, bracket to pan	6
5	109459	Gasket, oil gauge bracket	1
6	S-605	Lockwasher, bracket to pan	6
7	S-626	Washer, plain	6

NOTES

Illust. Ref. No.	Cummins Part No.	Part Name	No. Req. Per Eng.
---------------------	---------------------	-----------	----------------------

LUB. OIL COOLER

Figure 17

GROUP A—Model JT

	BM-48784	Cooler assembly, lubricating oil	1
1	S-103-D	Capscrew, lubricating oil cooler cover to housing	4
2	S-119	Capscrew, lubricating oil cooler housing to cover	2
3	111749	Cover, lubricating oil cooler (front)	1
4	110848	Element, lubricating oil cooler	1
5	111956	Gasket, lubricating oil cooler cover to housing	1
6	111865	Housing, lubricating oil cooler	1
7	S-604	Lockwasher, lubricating oil cooler cover to housing	4
8	S-605	Lockwasher, lubricating oil cooler housing to cover	2
9	110841	"O" Ring, oil cooler	2
10	S-911-B	Plug, pipe	1
11	110827	Retainer, "O" Ring	1

Mounting Parts

12	S-103-D	Capscrew, lubricating oil cooler housing to block	1
13	S-103	Capscrew, lubricating oil cooler housing to block	1
2	S-119	Capscrew, lubricating oil cooler housing to block	3
14	68615	Gasket, lubricating oil cooler to block (rear)	1
15	111955	Gasket, lubricating oil cooler housing to block (front)	1
8	S-605	Lockwasher, lubricating oil cooler housing to block	4
16	S-604	Lockwasher, lubricating oil cooler housing to block	1
	S-924	Plug, pipe	1

GROUP B—Model JS, JNS

Same as group A except parts shown below:

	BM-48786	Lubricating oil cooler assembly	1
3	111795	Cover, lubricating oil cooler (front)	1

PARTS INDENTED ARE INCLUDED IN THE PART UNDER WHICH THEY ARE INDENTED

Illust. Ref. No.	Cummins Part No.	Part Name	No. Req. Per Eng.
---------------------	---------------------	-----------	----------------------

LUB. OIL FILTER

Figure 18

GROUP A—All Models

	BM-62567	Lubricating oil filter and head assembly	1
1	S-137	Capscrew, filter shell to head	4
	BM-45611	Head assembly, lubricating oil filter	1
2	69354	Cap, spring retainer	1
3	S-3050	Gasket, spring retainer cap	1
4	110728	Head, lubricating oil filter	1
	S-911-B	Plug, pipe	1
5	69356	Plunger, lubricating oil pressure	1
6	69355	Spring, plunger	1
7	S-610	Lockwasher, filter shell to head	4
	BM-60647	Filter assembly, lubricating oil	1
8	69751	Gasket, filter cover	1
9	69901	Plug, drain	1
	BM-60646	Element assembly	1
10	S-1953	Bag, filter	1
11	134729	Separator	1
	BM-60645	Spool assembly	1
12	128805	Ball, by-pass relief	1
13	128800	Clamp, lubricating oil filter	1
14	128801	Gasket, bag	2
15	128802	Nut, locking	2
16	S-503	Pin, cotter	1
17	128803	Retainer, spring	1
	128807	Ring, snap	1
18	128804	Spring, by-pass ball	1
19	128806	Spring, spool	1
20	128799	Spool	1
21	BM-58237	Shell assembly, lubricating oil filter	1
22	S-112	Capscrew, head to block	2
23	S-141	Capscrew, head to block	2
24	112795	Gasket, head to block	1
25	S-604	Lockwasher, head to block	4

NOTES

Illust. Ref. No.	Cummins Part No.	Part Name	No. Req. Per Eng.
---------------------	---------------------	-----------	----------------------

**WATER PUMP
(BELT DRIVEN)**

Figure 19

GROUP A—Model JT

	BM-51280	Water pump assembly	1
1	S-1977	Bearing	1
2	70171	Bearing	1
3	132422	Body, water pump	1
4	S-155	Capscrew, hub to shaft	1
5	S-119	Capscrew, pulley sheave	3
6	S-115	Capscrew, water pump cover	4
7	S-185-A	Capscrew, water pump cover	2
8	101222	Cover, water pump	1
9	S-1004-1	Elbow	1
10	S-1109	Fitting, grease	1
11	44818	Gasket, water pump	1
12	122294	Impeller, water pump	1
13	S-610	Lockwasher	1
14	S-600	Lockwasher, pulley sheave	3
15	S-605	Lockwasher	6
16	S-962-E	Petcock	1
17	132427	Ring, snap	1
18	70527	Ring, rubber, water pump seat	1
19	125662	Seal, water pump	1
20	115020	Seat, water pump seal	1
21	44796	Shaft, water pump	1
22	120400	Sheave, water pump (fixed)	1
23	116741	Sheave, water pump (adjusting)	1
24	67518	Slinger, water pump	1
25	105287	Spacer, water pump bearing	1
26	70880	Washer, plain	1

Mounting Parts

27	101427	Belt, water pump	1
28	S-140	Capscrew, pump to gear housing	2
29	S-112	Capscrew, water pump inlet connection	2
30	111752	Connection, water pump to oil cooler	1
31	69910	Connection, water pump inlet	1
32	70627	Coupling, water by-pass	1
33	69909	Gasket, water pump inlet connection	1
34	S-604	Lockwasher, water pump inlet	2
35	S-610	Lockwasher, pump to gear housing	2
36	70624	"O" ring	4

NOTES

WHEN ORDERING PARTS ALWAYS GIVE ENGINE SERIAL NUMBER

Illust.
Ref. No.Cummins
Part No.

Part Name

No. Req.
Per Eng.Illust.
Ref. No.Cummins
Part No.

Part Name

No. Req.
Per Eng.**WATER PUMP
(SUPERCHARGER DRIVEN)**

Figure 20

GROUP A—Model JS, JNS

	BM-37859	Water pump assembly	1
1	132414	Body, water pump	1
2	S-115	Capscrew, cover	3
3	S-103	Capscrew, cover	1
4	106337	Cover, water pump	1
5	107782	Flange, coupling	1
6	102323	Gasket, water pump to body	1
7	105413	Impeller, water pump	1
8	S-605	Lockwasher, cover capscrew	4
9	S-962-E	Petcock, drain	1
10	107777	Ring, snap	1
11	132425	Ring, snap	1
12	105176	Seal, water pump	1
	107317	Seat, water pump seal	1
	107318	Seal assembly, water pump seal	1
	BM-37802	Shaft, bearing and flinger assembly	1
13	107776	Flinger, water pump	1
14	107779	Shaft and bearing assembly	1
15	107781	Washer, rubber	1
Mounting Parts			
16	S-122	Capscrew, pump inlet connection	2
17	S-115	Capscrew, water pump to supercharger	4
18	S-188-C	Capscrew, lug to pump	1
19	69910	Connection, water pump inlet	1
20	111753	Connection, oil cooler	1
21	70627	Coupling, water by-pass	1
22	68687	Gasket, water pump to supercharger	1
23	69909	Gasket, water pump inlet connection	1
	118844	Keeper, water connection	1
24	S-604	Lockwasher, water pump to supercharger	4
25	S-604	Lockwasher, water pump inlet connection capscrew	2
26	S-600	Lockwasher, lug to pump	1
27	70624	"O" ring, water by-pass coupling	2
28	43463-A	"O" ring, oil cooler connection	2
29	S-626	Washer, water pump to supercharger	4

**THERMOSTAT HOUSINGS
AND WATER
CONNECTIONS**

Figure 21

GROUP A—Model JT

	S-921-D	Bushing	1
1	108707	Capscrew, water outlet connection to housing	2
2	S-105	Capscrew, thermostat housing	4
3	S-112	Capscrew, cylinder head water outlet connection	2
4	42354-B	Connection, water outlet	1
5	116673	Connection, cylinder head water outlet	1
	116684	Elbow, restrictive	1
7	116681	Gasket, thermostat housing	1
8	9221	Gasket, water outlet connection	1
9	BM-49919	Housing assembly, thermostat (116666)	1
10	111325	Seal, thermostat	1
11	S-604	Lockwasher, thermostat housing	4
11	S-604	Lockwasher, water outlet connection	4
	BM-49918	Plate and insert assembly, connection	1
12	115374	Plate, connection to head	1
13	115375	Insert, connection to head	1
14	S-935-B	Plug, pipe (3/8 N.P.T.)	1
15	S-915-A	Plug, pipe (1/2 N.P.T.)	4
16	S-962	Plug, pipe (1 N.P.T.)	2
17	S-901	Plug, pipe (1/4 N.P.T.)	2
18	44267	Thermostat (160° - 175°)	1
	BM-47092	Tube assembly, water pump body to thermostat housing	1

GROUP B—Model JS, JNS

Same as group A except parts shown below:

	S-163	Capscrew, by-pass connection to housing	2
	102303	Connection, water by-pass	1
	116675	Connection, cylinder head water outlet	1
	116682	Gasket, thermostat housing	1
	106288	Gasket, water by-pass connection	1
	BM-45575	Housing assembly, thermostat (116671)	1
	S-915-A	Plug, pipe	2
	S-962	Plug, pipe	1
	S-995	Plug, pipe	1
	S-925	Plug, pipe	1
	S-989-A	Plug, pipe	1
	106263	Spacer	1

Group A Parts Not Required

	S-921-D	Bushing, pipe	1
--	---------	---------------	---

PARTS INDENTED ARE INCLUDED IN THE PART UNDER WHICH THEY ARE INDENTED

Illust. Ref. No.	Cummins Part No.	Part Name	No. Req. Per Eng.
---------------------	---------------------	-----------	----------------------

ACCESSORY DRIVE (WITHOUT HOURMETER)

Figure 22

GROUP A—Model JT

	BM-45506	Accessory drive assembly	1
1	S-16085	Bearing, accessory drive	1
2	117894	Bearing, roller	1
3	102975	Coupling, accessory drive	1
4	108176	Gasket, accessory drive to gear plate	1
5	44783	Gear, accessory drive	1
6	S-301	Key, accessory drive gear and pulley	2
7	S-316	Key, accessory drive coupling	1
8	105297	Nut, Marsden	1
	69901	Plug, pipe	1
9	70183	Ring, retaining	1
10	103671	Shaft, compressor drive	1
11	105885	Spacer, bearing	1
12	108143	Support, accessory drive bearing	1
13	BM-51278	Accessory drive pulley and sleeve assembly (120313)	1
14	70755	Sleeve, accessory drive pulley	1
15	42391-B	Nut, accessory drive pulley	1
		Mounting Parts	
	68152-A	Clamp, hose	1
	69099	Elbow, restrictor	1
	BM-21274	Hose assembly	1

GROUP B—Model JS, JNS

Same as Group A except parts shown below:

16	BM-58094	Accessory drive pulley and sleeve assembly (124365)	1
----	----------	---	---

ACCESSORY DRIVE (WITH HOURMETER)

Figure 23

GROUP A—All Models

	BM-50749	Accessory drive (clockwise tachometer rotation)	1
1	S-16085	Bearing, accessory drive (rear)	1
	117894	Bearing, roller	1
2	9052-1	Cap, dust	2
3	102975	Coupling half	1
4	102996	Gasket, accessory drive bracket housing	1
5	44783	Gear, accessory drive	1
6	109357	Gear, tachometer drive	1
7	S-301	Key, accessory drive gear	1

Illust. Ref. No.	Cummins Part No.	Part Name	No. Req. Per Eng.
---------------------	---------------------	-----------	----------------------

ACCESSORY DRIVE (WITH HOURMETER) (Cont'd)

Figure 23

GROUP A—(Cont'd)

8	S-311	Key, accessory drive coupling	1
9	105297	Nut	1
10	70183	Ring, snap	1
11	109539	Shaft, drive	1
12	109538	Spacer, accessory drive	1
13	109546	Spacer, accessory drive	1
	BM-41304	Support assembly	1
14	109354	Adapter, hourmeter and tachometer	2
15	109401	Bearing, tachometer driven gear	2
16	114515	Seal, oil, hourmeter drive (upper)	1
17	109341	Seal, oil, hourmeter drive (lower)	1
	BM-39951	Shaft and gear assembly	1
18	109358	Gear, tachometer driven	1
19	109353	Shaft, hourmeter & tachometer drive	1
20	109537	Support, accessory drive	1
		Mounting Parts	
21	68152-A	Clamp, hose	1
22	69099	Elbow, restrictor	1
23	BM-21274	Hose assembly	1

GROUP B—Counter-clockwise tachometer rotation, J Series except Marine

Same as Group A except parts shown below:

	BM-50748	Accessory drive (counter clockwise tachometer rotation, less hourmeter only)	1
6	109359	Gear, tachometer drive	1
	BM-41307	Support assembly	1
18	109360	Gear, tachometer driven	1

ACCESSORY DRIVE (WITH CUMMINS AIR COMPRESSOR)

GROUP A— All Models

	BM-51278	Accessory drive pulley and sleeve assembly (120313)	1
	70775	Sleeve	1
	127704	Capscrew	1
	127705	Washer	1
	S-608	Washer	1

WHEN ORDERING PARTS ALWAYS GIVE ENGINE SERIAL NUMBER

Illust.
Ref. No.Cummins
Part No.

Part Name

No. Req.
Per Eng.Illust.
Ref. No.Cummins
Part No.

Part Name

No. Req.
Per Eng.**FAN BRACKET AND HUB SUPERCHARGER IDLER
GEAR AND HUB**

Figure 24

GROUP A—Model JT

	BM-57736	Fan hub assembly	1
1	120157	Bearing, pulley	1
2	115512	Bearing, roller	1
3	110251	Bracket, fan	1
4	S-120	Capscrew, spacer	4
5	S-604	Lockwasher, spacer capscrew	4
6	105305	Nut, slotted hexagon	1
7	70910	Nut, fan hub shaft	1
8	120331	Pulley, fan (3-groove)	1
9	102019	Ring, snap, bearing retainer	1
10	66912-10	Screw, fan, adjusting	1
11	105307	Shaft, fan hub	1
12	119711	Spacer, fan pilot	1
13	105306	Spacer, bearing	1
14	102010	Washer, plain	1
15	102027	Washer, cone clamp	1
Mounting Parts			
	124421	Belt, fan drive	2
16	102020	Capscrew, bracket to block	2
17	106069	Capscrew, bracket to block	2
18	S-610	Lockwasher, bracket to block	4

GROUP B—Model JS, JNS

Same as Group A except parts shown below:

	BM-58096	Fan hub assembly	1
	124366	Pulley, fan (2-groove)	1

**SUPERCHARGER IDLER
GEAR AND HUB**

Figure 25

GROUP A—Model JS, JNS

	BM-27681	Idler gear and hub assembly	1
	BM-25558	Supercharger idler gear assembly	1
1	68629-1	Bushing, supercharger idler gear	2
2	43253-1	Gear, supercharger idler (driven)	1
	BM-25559	Idler gear spring retainer assembly	1
3	68635-1	Plate, idler gear spring retainer	2
4	43244-1	Retainer, idler gear spring	1
5	S-3198	Rivet, countersunk head	8
	BM-20488	Hub assembly, supercharger idler drive	1
6	68578	Bushing, supercharger idler drive hub	2
7	43243	Hub, supercharger idler drive	1

**GEAR AND HUB
(Cont'd)****GROUP A—(Cont'd)**

8	68633-1	Bearing, supercharger thrust (rear)	1
9	68631	Bearing, supercharger hub thrust (front)	1
10	68632	Bearing, supercharger thrust	1
11	68991	Capscrew, flathead socket	6
12	43248	Cover, idler gear spring retaining	1
13	43273	Gear, supercharger idler drive	1
14	69861	Pin, supercharger drive spring retaining	4
15	68637-1	Spring, supercharger idler leaf	20

PT Fuel System

Each Cummins PT Fuel Pump is calibrated to obtain the best performance and fuel economy for your engine. Your Cummins Distributor or Dealer has the special tools required for complete rebuild and calibration. Caution: do not disturb the fuel regulator settings or the throttle screw settings, as serious damage to your engine may result.

Only PT Fuel System parts which can be replaced without pump calibration are listed here. Your Cummins Distributor will record the specific part number of your complete PT Fuel Pump in the back of this book.

FUEL SUPPLY GEAR PUMP**GROUP A—All Models**

BM-55830	Gear pump 3/4" (RH)	1
70689	Gasket, pump	1

SHUTDOWN VALVE**GROUP A—All Models:**

107889	Valve, shutdown (6 volt)	1
107890	Valve, shutdown (12 volt)	1
107891	Valve, shutdown (24 volt)	1

PARTS INDENTED ARE INCLUDED IN THE PART UNDER WHICH THEY ARE INDENTED

Illust. Ref. No.	Cummins Part No.	Part Name	No. Req. Per Eng.
---------------------	---------------------	-----------	----------------------

FUEL TUBING

GROUP A—All Models:

117179	Manifold, drain	1
BM-62740	Manifold, supply	1
BM-36850	Tube, shut-off valve to supply manifold (with air compressor)	1
BM-39883	Tube, shut-off valve to supply manifold (without air compressor)	1

Mounting Parts

70795	Clip, tube	4
-------	------------	---

FUEL INLET AND DRAIN CONNECTIONS

GROUP A—All Models

BM-31308	Fuel inlet connection assembly	6
BM-31309	Fuel drain connection assembly	6
9426-2	Gasket, fuel connection (copper)	12
70854	Gasket, fuel inlet and drain (rubber)	12
70847	Retainer, gasket fuel connection	12
70856	Spring, fuel inlet and drain connection	12

INJECTOR

GROUP A—All Models

BM-34136	Injector assembly (JS)	6
BM-32322	Injector assembly (JNS-JT)	6
BM-28818	Injector cup and gasket (JS)	6
BM-32321	Injector cup and gasket (JNS-JT)	6
62410	Gasket, injector cup	6

FUEL FILTER

GROUP A—All Models

BM-59497	Filter assembly, fuel	1
126517	Element	1
BM-59481	Fuel filter, head assembly	1
121477	Head	1
126516	Bolt	1
127506	"O" Ring	1

Mounting Parts

110280	Bracket, fuel filter	1
129859	Connector	1

Illust. Ref. No.	Cummins Part No.	Part Name	No. Req. Per Eng.
---------------------	---------------------	-----------	----------------------

EXHAUST MANIFOLDS

Figure 26

GROUP A—Model JS

10	20872-1	Manifold, exhaust (front)	1
11	20873-1	Manifold, exhaust (rear)	1
Mounting Parts			
4	60473	Clamp, exhaust manifold	6
5	69664	Gasket, intake and exhaust	3
6	S-267	Nut, exhaust manifold clamp	6

GROUP B—Model JNS

Same as Group A except parts shown below:

Mounting Parts

8	103849	Clamp, exhaust manifold	3
9	103848	Gasket, exhaust manifold	3
6	S-217-A	Nut, manifold stud	6

GROUP C—Model JT

12	109427	Manifold, exhaust (front)	1
13	110524	Manifold, exhaust (center)	1
14	109428	Manifold, exhaust (rear)	1

Mounting Parts

	S-103-D	Capscrew, exhaust manifold	12
15	112300	Gasket, exhaust manifold	6
	109003	Lockplate, exhaust manifold	12
	108976	Washer, plain	12

AIR INTAKE MANIFOLDS

Figure 27

GROUP A—Model JNS

9	120217	Manifold, air intake	1
2	125880	Adapter, preheater nozzle	1
3	68139	Elbow, preheater	1
	67946	Gasket, preheater nozzle	1
4	68812	Glow plug	1
	118273	Gasket, preheater glow plug	1
5	68178-1	Lockplate	1
6	69215	Nozzle, preheater	1
7	68061-A	"O" ring	1
8	43468	Pin, groove	1
	S-903	Plug, pipe	1
	S-911-B	Plug, pipe	2
	68813	Resistor, preheater glow plug	1

WHEN ORDERING PARTS ALWAYS GIVE ENGINE SERIAL NUMBER

Illust. Ref. No.	Cummins Part No.	Part Name	No. Req. Per Eng.	Illust. Ref. No.	Cummins Part No.	Part Name	No. Req. Per Eng.
---------------------	---------------------	-----------	----------------------	---------------------	---------------------	-----------	----------------------

AIR INTAKE MANIFOLDS (Cont'd)

Figure 27

GROUP A—Model JNS (Cont'd.)

Mounting Parts

	111748	Bracket, connection support	1
	S-199-B	Capscrew, manifold to head	3
	S-109	Capscrew, bracket to connection	2
	108707	Capscrew, manifold to head	3
	S-135	Capscrew, intake manifold connection	4
	S-103-D	Capscrew, crossover to connection	4
11	43828-G	Clamp, hose	1
	43828-F	Clamp, hose	1
12	68663-2	Clamp, supercharger connection	1
13	106407	Connection, intake manifold	1
14	106408	Crossover, intake manifold	1
15	105947	Elbow, intake manifold	1
	70851	Gasket, intake manifold	3
	102131	Gasket, intake manifold connection	1
	106445	Gasket, crossover	1
16	104296	Hose, intake manifold	1
	S-604	Lockwasher, manifold to head	1
	S-604	Lockwasher, manifold connection	1
17	68667-1	"O" ring, supercharger connection	1
	S-602	Washer, plain	12
	63322	Washer, plain	2

GROUP B—Model JS

Same as Group A except parts shown below:

18	10963-4	Manifold, air intake	1
19	68606	Plug, pipe	1
20	68930	Plug, steel, air intake	1

Mounting Parts

11	43828-G	Clamp, hose	1
12	68663-2	Clamp, supercharger connection	1
17	68667-1	"O" ring supercharger connection	1

GROUP C—Model JT

Same as Group A except parts shown below:

21	120307	Manifold, air intake	1
----	--------	----------------------	---

Mounting Parts

	S-199-B	Capscrew, manifold to head	3
	S-103-D	Capscrew, manifold to head	3
	43828-F	Clamp, hose	4

AIR INTAKE MANIFOLDS (Cont'd)

GROUP C—Model JT (Cont'd.)

Mounting Parts (Cont'd.)

22	103789	Connection, turbocharger air outlet	1
	68139	Elbow	1
	70851	Gasket, intake manifold	3
16	104296	Hose, turbocharger air outlet connection	2
	S-604	Lockwasher, manifold to head	6
	S-679	Washer, copper	3
	S-602	Washer, plain	3

AIR CLEANERS

GROUP A—Model JS, JNS

106835	Cleaner, air, 10-1/2" diameter	1
107125	Cover, shell	1
106838	Element assembly	1
107126	Gasket, element	1
107127	Gasket, flange	1
107128	Shell assembly	1
122121	Spring, shell cover clamp	3

Mounting Parts

106124	Adapter, air cleaner	1
S-115	Capscrew, adapter to cleaner	6
43828-G	Clamp, hose	4
103806	Hose, hump, 3-1/2" diameter	2
S-605	Lockwasher, adapter capscrew	6
107091	Strap, air cleaner	2
S-626	Washer, plain	6

GROUP B—Model JT

Same as Group A except parts shown below:

106833	Cleaner, air, 12" diameter	1
107135	Cover, shell	1
106837	Element assembly	1
107136	Gasket, element	1
107137	Gasket, flange	1

Mounting Parts

114616	Adapter, air cleaner	1
125740	Clamp, hose	4
103807	Hose, hump, 4" diameter	2
105916	Strap, air cleaner	2

PARTS INDENTED ARE INCLUDED IN THE PART UNDER WHICH THEY ARE INDENTED

Illust. Ref. No.	Cummins Part No.	Part Name	No. Req. Per Eng.
---------------------	---------------------	-----------	----------------------

FLYWHEELS, RING GEARS AND FLYWHEEL HOUSINGS

Flywheels, flywheel housings and ring gears have been designed to adapt the Cummins Diesel to hundreds of different installations. For this reason, these assemblies are not listed.

Your Cummins Distributor will record flywheel, flywheel housing and ring gear part numbers in the back of this book.

ELECTRICAL EQUIPMENT

Electrical equipment is not manufactured by the Cummins Engine Company, Inc. Complete service for electrical equipment may be obtained from the manufacturers, The Delco-Remy Company at Anderson, Indiana, or the Leece-Neville Company at Cleveland, Ohio, or from their service stations. Address of nearest service station may be obtained from the manufacturer.

GROUP A—Model JS

S-175-A	Capscrew, generator to bracket	1
S-178-B	Capscrew, generator to bracket	1
102884	Diagram, engine wiring	1
102885	Diagram, schematic	1
42568	Fan, generator	1
43813	Generator, D.C. (12 Volt)	1
115007	Light Assembly, indicator	1
S-606	Lockwasher, generator fan	4
S-610	Lockwasher, generator to bracket	2
43812	Motor, starting (12 Volt)	1
S-217	Nut, generator to bracket	2
101077	Pulley, generator	1
42796	Regulator, voltage (12 Volt)	1
68813	Resistor, preheater (12 Volt)	1
S-1319	Screw, generator fan	1
102846	Switch, key	1
104215	Switch, toggle (automatic)	1
118847	Switch, magnetic	1

Mounting Parts

101426	Belt, generator drive	1
63775	Bolt, generator adjusting	1
21489	Bracket, generator	1
111438	Bracket, magnetic switch (industrial)	1
S-115-C	Capscrew, magnetic switch (industrial)	1
S-112	Capscrew, generator	3
S-103-D	Capscrew, bracket to adjusting strap	1

Illust. Ref. No.	Cummins Part No.	Part Name	No. Req. Per Eng.
---------------------	---------------------	-----------	----------------------

ELECTRICAL EQUIPMENT (Cont'd)

GROUP A—(Cont'd)

S-103-A	Capscrew, starting motor	3
68715	Lever, generator belt adjusting	1
S-604	Lockwasher, generator swivel	3
S-604	Lockwasher, adjusting screw	1
S-608	Lockwasher, adjusting lever screw	1
S-603	Lockwasher, starting motor	3
70057	Shim, generator adjusting	use as
70057-A	Shim, generator adjusting	required
S-601	Washer, adjusting lever screw, plain	1

GROUP B—Model JT

Same as Group A except parts shown below:

70885	Belt, generator drive	1
70869	Bolt, generator swivel	2
113809	Bracket, generator	1
103009	Capscrew, generator bracket	3
S-231	Nut, generator swivel	

AIR COMPRESSOR

Figure 28

GROUP A—Model JS, JNS

1	BM-49624	Air compressor assembly, 12 cu. ft. (119215) (Flange type) (Air suction)	1
	69793	Capscrew, coupling half	1
2	S-103	Capscrew, air suction strainer	2
	101918	Coupling, half	1
	103426	Gasket, air suction strainer	1
	68174	Key, coupling half	1
3	S-605	Lockwasher, air suction strainer	2
4	103679	Strainer, air suction	1
	S-602	Washer, plain, coupling half capscrew	1

Mounting Parts

5	68138	Adapter	1
6	S-1002-A	Body, flexible fitting	3
7	S-1092	Body, flexible fitting (at spacer)	1
8	S-155	Capscrew, compressor to compressor drive	4
	69793	Capscrew, support to block	2
	102975	Coupling, half	1
	103369	Coupling sleeve, compressor drive	1
9	S-1005-A	Elbow, water	1

WHEN ORDERING PARTS ALWAYS GIVE ENGINE SERIAL NUMBER

Illust. Ref. No.	Cummins Part No.	Part Name	No. Req. Per Eng.	Illust. Ref. No.	Cummins Part No.	Part Name	No. Req. Per Eng.
---------------------	---------------------	-----------	----------------------	---------------------	---------------------	-----------	----------------------

AIR COMPRESSOR (Cont'd)

GROUP A—(Cont'd)

10	S-1095	Elbow, oil drain tube (at compressor)	1
11	103005	Gasket, compressor drive and fuel pump flange	2
12	BM-17334	Hose assembly, oil inlet	1
	S-604	Lockwasher, support to block	2
13	S-610	Lockwasher, compressor drive capscrow	4
14	S-610	Lockwasher, compressor support stud	2
15	S-610	Lockwasher, compressor to fuel pump support stud	4
16	S-274	Nut, compressor to fuel pump	2
17	S-274	Nut, compressor to fuel pump support stud	4
	108739	Ring, snap, compressor drive coupling	2
	109234	Support, compressor and fuel pump	1
18	BM-36365	Tube assembly, oil drain	1
19	BM-39218	Tube assembly, water outlet	1
20	BM-34208	Tube assembly, water inlet	1
	S-622	Washer, plain	2
	S-602	Washer, plain	2
21	S-622	Washer, plain, compressor to fuel pump support stud	4

GROUP B—Model JT

Same as Group A except parts shown below:

Mounting Parts

19	BM-43054	Tube assembly, water outlet	1
----	----------	-----------------------------	---

SUPERCHARGER (Gear Driven)

Figure 29

GROUP A—Model JS, JNS

	108573	Supercharger assembly	1
	11145-29	Bearing cage assembly	4
1	11145-31	Bearing	4
2	11145-30	Cage, bearing	4
	11145-44	Capscrow, bearing cage	8
	10366-33	Capscrow, end plate (gear)	12
	11145-45	Capscrow, end plate pump	12
3	107782	Coupling (half)	1
4	11145-32	Cover	1
5	11145-41	Gasket, supercharger cover	1
6	43274	Gear, drive	1

SUPERCHARGER (Cont'd)

Figure 29

GROUP A—(Cont'd)

7	BM-65690	Gear, supercharger timing	1
8	11145-1	Housing assembly	1
9	11145-39	Journal, outboard bearing	1
	S-605	Lockwasher	24
10	10366-13	Lockwasher, gear locknut	2
	11145-46	Lockwire	As Req.
	10366-54	Plate, name	1
	11145-17	Plate, gear end assembly	1
11	11145-20	Dowel	2
12	11145-18	Plate, end	1
13	11145-19	Ring, oil collector	2
	11145-21	Plate, pump end assembly	1
14	11145-20	Dowel	4
15	11145-22	Plate, end	1
16	11145-19	Ring, oil collector	2
	S-924	Plug, pipe	1
17	11145-24	Rotors, matched assembly	1
18	11145-52	Shim, bearing cage (.002")	As Req.
19	11145-51	Shim, bearing cage (.003")	As Req.
20	11145-50	Shim, bearing cage (.010")	As Req.
	10366-55	Screw, drive	2
21	124299	Seal ring, bearing cage	4
	68516	Seal ring, oil drain	2
	108172	Seal ring, oil pressure	2
22	11145-36	Seal ring, shaft	8
	11145-53	Shaft nut assembly	2
23	11145-54	Nut, shaft	2
24	S-714	Plug, expansion	2
25	11145-37	Washer, thrust	2

Mounting Parts

S-103-D	Capscrow, inlet connection	4
S-197	Capscrow, gear case cover to supercharger	3
20881	Connection, supercharger inlet	1
69725	Cover, air intake connection	1
67857	Dowel, supercharger to gear housing	1
108174	Dowel, supercharger to gear housing	1
68713	Gasket, supercharger inlet connection	1
108166	Gasket, supercharger to gear housing	1
S-604	Lockwasher, inlet connection	4
S-604	Lockwasher, gear case cover to supercharger	3
S-924	Plug, pipe	1

PARTS INDENTED ARE INCLUDED IN THE PART UNDER WHICH THEY ARE INDENTED

Illustr. Ref. No.	Cummins Part No.	Part Name	No. Req. Per Eng.	Illustr. Ref. No.	Cummins Part No.	Part Name	No. Req. Per Eng.
----------------------	---------------------	-----------	----------------------	----------------------	---------------------	-----------	----------------------

AIR COMPRESSOR CUMMINS

Figure 30

GROUP A—All Models

	BM-66035	Compressor assembly, air	1
1	S-104	Capscrew, cylinder head to compressor body	2
2	S-102-D	Capscrew, cylinder head to compressor body	4
3	S-103-D	Capscrew, bearing support to crankcase	6
	107947	Cock, drain	1
4	S-193	Capscrew, counterweight	1
5	125349	Counterweight, crankshaft	1
6	130258	Coupling, retainer plate	1
7	116417	Crankcase, compressor	1
	BM-66020	Drive assembly, compressor	1
8	130080	Bearing, thrust .088/.090	Use
	130081	Bearing, thrust .090/.092	As
	130083	Bearing, thrust .092/.094	Req'd
9	117894	Bearing, roller	1
10	131970	Crankshaft, compressor	1
11	44783	Gear, drive	1
12	S-301	Key, Crankshaft	2
13	130399	Sleeve, thrust bearing retainer	1
	120031	Spacer, compressor	1
14	BM-56617	Support assembly, bearing (120018)	1
15	116620	Bushing	2
16	117077	Gasket, bearing support to crankcase	1
17	129059	Gasket, cylinder head to crankcase	1
	BM-57496	Head assembly, cylinder	1
18	127896	Body, unloading valve	1
19	S-115	Capscrew, unloader body	2
20	127807	Head, cylinder, compressor	1
21	128085	"O" ring, exhaust valve seat	1
22	128086	"O" ring, exhaust valve seat	1
23	128087	"O" ring, unloader body	1
24	127892	Plunger, unloader	1
	S-995	Plug, pipe	1
25	128068	Seat, exhaust valve	1
53	127895	Seat, intake valve	1
26	127893	Seat, spring, unloader valve	1
27	127936	Seal, "V" packing	1
28	123658	Spring, plunger	1
29	128080	Spring, exhaust valve	1
30	130164	Spring, intake valve	1

AIR COMPRESSOR CUMMINS (Cont'd)

GROUP A—(Cont'd)

31	127940	Valve, exhaust	1
32	127941	Valve, intake	1
33	S-605	Washer, unloader body	2
34	131969	Key, counterweight	1
35	117370	Lockplate	1
36	S-604	Lockwasher	6
	S-608	Plug, pipe	2
	BM-62550	Piston assembly, compressor	1
37	119810	Pin, piston	1
38	132780	Piston, compressor	1
39	119859	Ring, snap, piston pin	2
	BM-62480	Ring set, piston, compressor	1
40	130800	Ring, compression	2
41	130810	Ring, oil	1
42	BM-56606	Rod assembly, connecting, compressor (119776)	1
43	116930	Bushing, crankshaft	1
44	119800	Bushing, piston pin	1
45	117267	Washer, counterweight	1
Mounting Parts			
	S-1092	Body, flexible fitting	1
	S-1002-A	Body, adapter	1
46	S-101-A	Capscrew, compressor to block	5
47	S-102	Capscrew, air inlet connection	2
48	127929	Connection, air inlet	1
	S-921	Elbow	1
	S-1005-A	Elbow, water drain	1
49	108176	Gasket, accessory drive housing	1
50	127950	Gasket, air inlet connection	1
	68139	Hose	1
51	S-605	Lockwasher	4
52	S-610	Lockwasher, compressor to drive	5
	BM-57461	Tube assembly, water outlet	1
	BM-57462	Tube assembly, water inlet	1
	BM-23750	Hose assembly, oil supply	1
	BM-66132	Hose assembly, oil drain	1

NOTES

WHEN ORDERING PARTS ALWAYS GIVE ENGINE SERIAL NUMBER

Illust.
Ref. No.Cummins
Part No.

Part Name

No. Req.
Per Eng.Illust.
Ref. No.Cummins
Part No.

Part Name

No. Req.
Per Eng.**TURBOCHARGER****T-506 Oil COOLED**

Figure 31

GROUP A—Model JT

	BM-62705	Turbocharger assembly, top mounted (130675)	1
1	134322	Bearing, thrust	2
2	105737	Capscrew, exhaust casing	6
3	S-115	Capscrew, front plate to main casing	8
4	105729	Capscrew, main casing to turbine casing	8
	116436	Capscrew, nozzle ring	4
	130570	Capscrew, diffuser plate	4
6	S-168-C	Capscrew, spacer	3
7	BM-62420	Casing and bearing assembly main (128760)	1
8	S-995	Plug, main casing	2
9	130004	Casing, exhaust	1
10	121835	Casing, turbine	1
11	116269	Locknut, nozzle ring capscrew	4
12	S-605	Lockwasher, main casing to turbine casing	8
13	S-605	Lockwasher, front plate to main casing	8
14	S-600	Lockwasher, spacer	3
15	105736	Lockplate, exhaust casing	3
	116434	Lockwire	4
	134376	Orifice, oil restrictor	2
16	133536	"O" ring, oil seal plate	1
17	130527	Plate, diffuser	1
18	130539	Plate, front	1
19	122657	Plate, oil seal	1
	118349	Plug	1
	118350	"O" ring, plug	1
20	123043	Ring, nozzle	1
	BM-62704	Rotor and shaft assembly	1
26	115156	Seal, ring (piston ring type)	2
27	121798	Shield, inner	1
28	106057	Shield, outer	1
	106245	Shim, turbo. exhaust casing	1
29	106246	Shim, turbo. exhaust casing	1
	106247	Shim, turbo. exhaust casing	1
30	134374	Spacer, thrust washer	1
31	S-626	Washer, front plate to main casing	8
32	S-626	Washer, main casing to exhaust casing	8

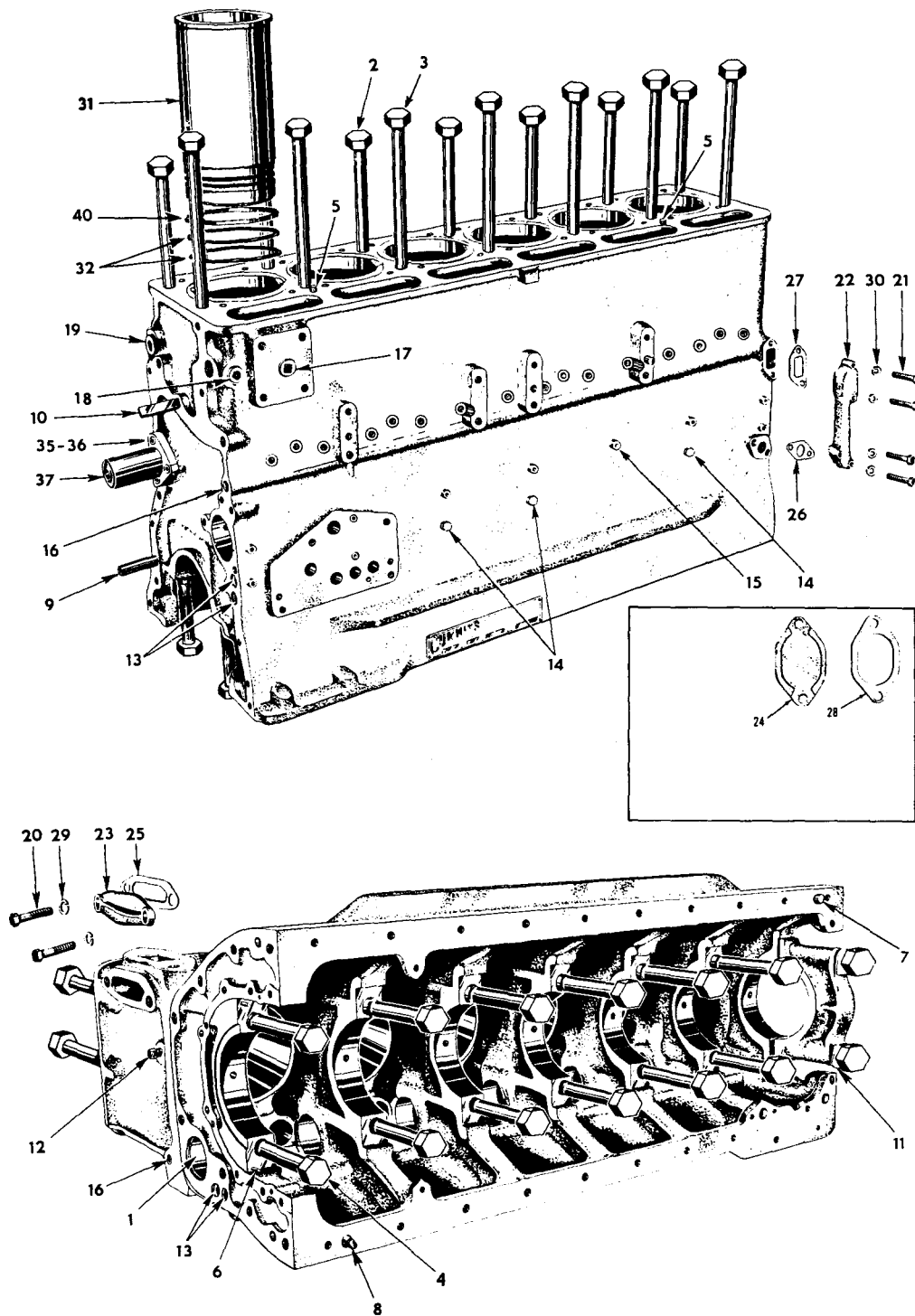
TURBOCHARGER (Cont'd)**GROUP A—(Cont'd)****Mounting Parts**

43764	Adapter, oil drain	1
S-982	Bushing, oil drain	1
105752	Capscrew, exhaust flange	6
102810	Capscrew, turbocharger to manifold	6
107460	Clamp, hose	2
68425	Clamp, oil supply hose	1
103789	Connection, turbocharger air outlet	1
111365	Elbow	1
115709	Elbow, exhaust connection	1
S-922	Elbow, oil drain	1
118347	Elbow, oil supply	1
118350	"O" ring, adapter	1
S-1040-A	Elbow, oil supply	1
113242	Flange, exhaust connection	1
106373	Gasket, exhaust connection	1
114201	Gasket, turbocharger exhaust inlet	1
104296	Hose, turbocharger to intake manifold	1
BM-44987	Hose assembly, oil drain	1
BM-49752	Hose assembly, oil supply	1
107440	Locknut	1
105751	Lockplate, exhaust connection	1
S-912-B	Nipple, oil drain	1
105750	Ring, exhaust flange	2
113210	Shield, heat	1

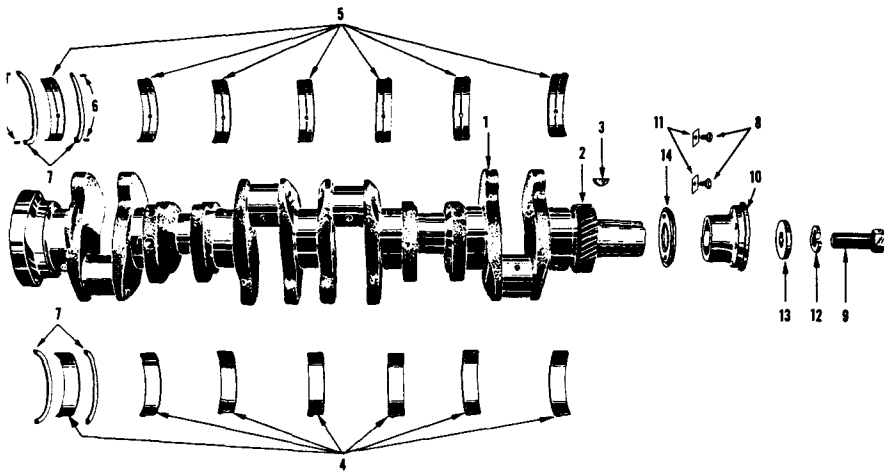
GASKET SETS

BM-50019	Engine gasket set (JS-JNS)	1
BM-50020	Engine gasket set (JT)	1
BM-37274	Cylinder head gasket set (JS)	1
BM-37313	Cylinder head gasket set (JNS)	1
BM-46125	Cylinder head gasket set (JT)	1

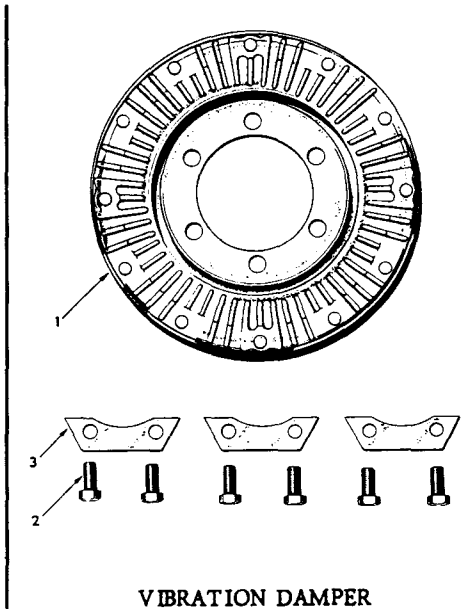
PARTS INDENTED ARE INCLUDED IN THE PART UNDER WHICH THEY ARE INDENTED



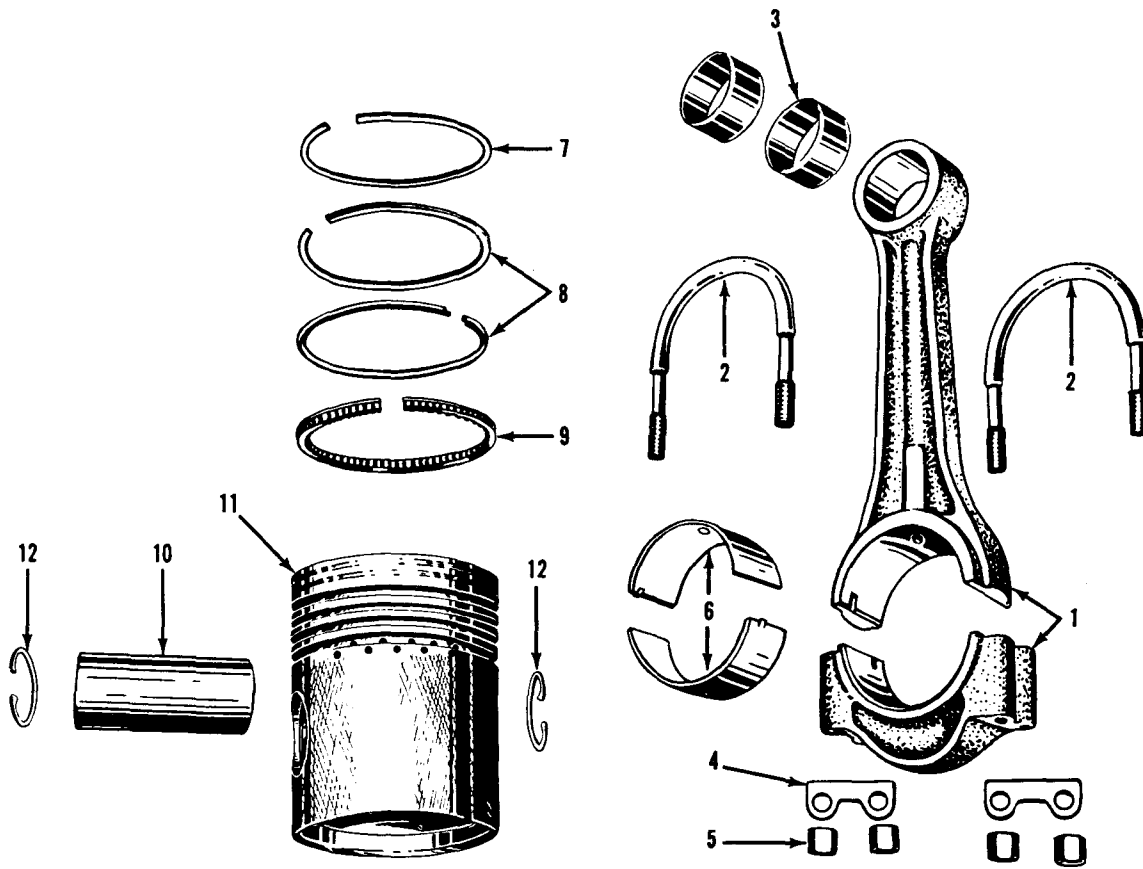
CYLINDER BLOCK
Figure 1



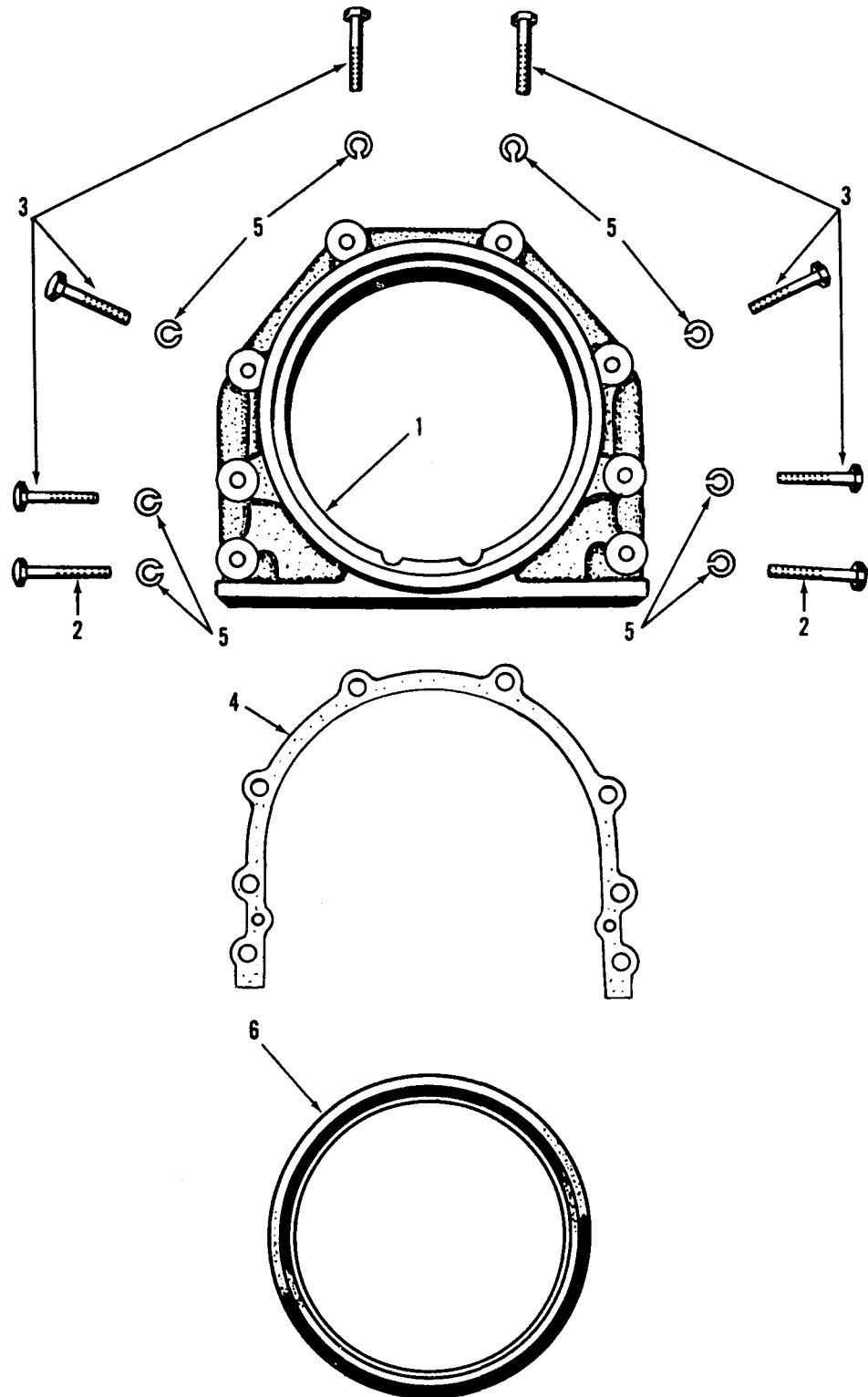
CRANKSHAFT
Figure 2



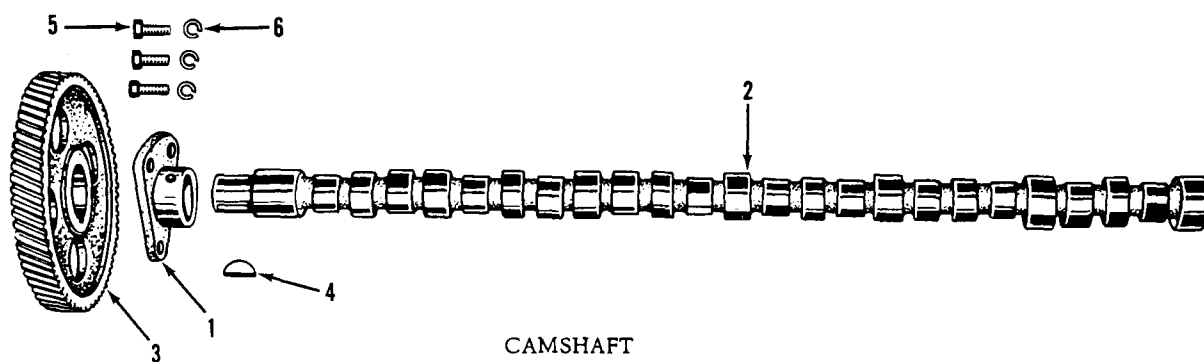
VIBRATION DAMPER
Figure 3



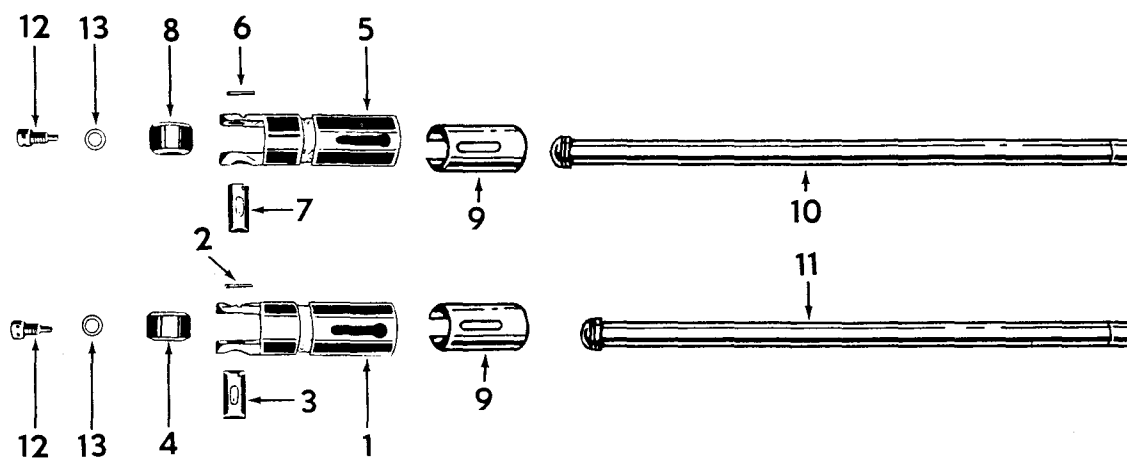
PISTON and CONNECTING RODS
Figure 4



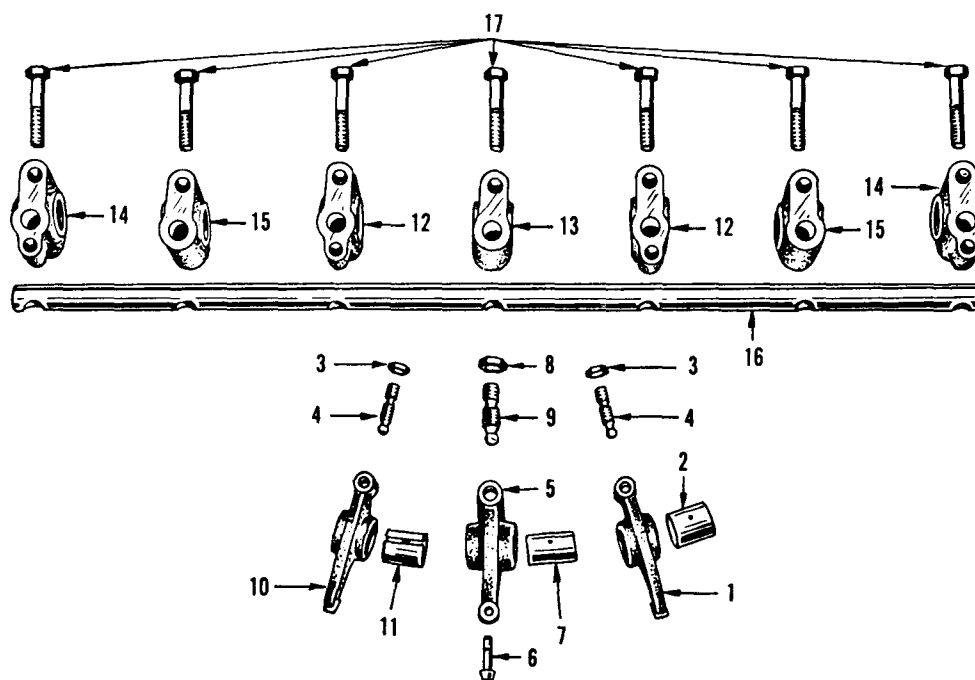
REAR COVER
Figure 5



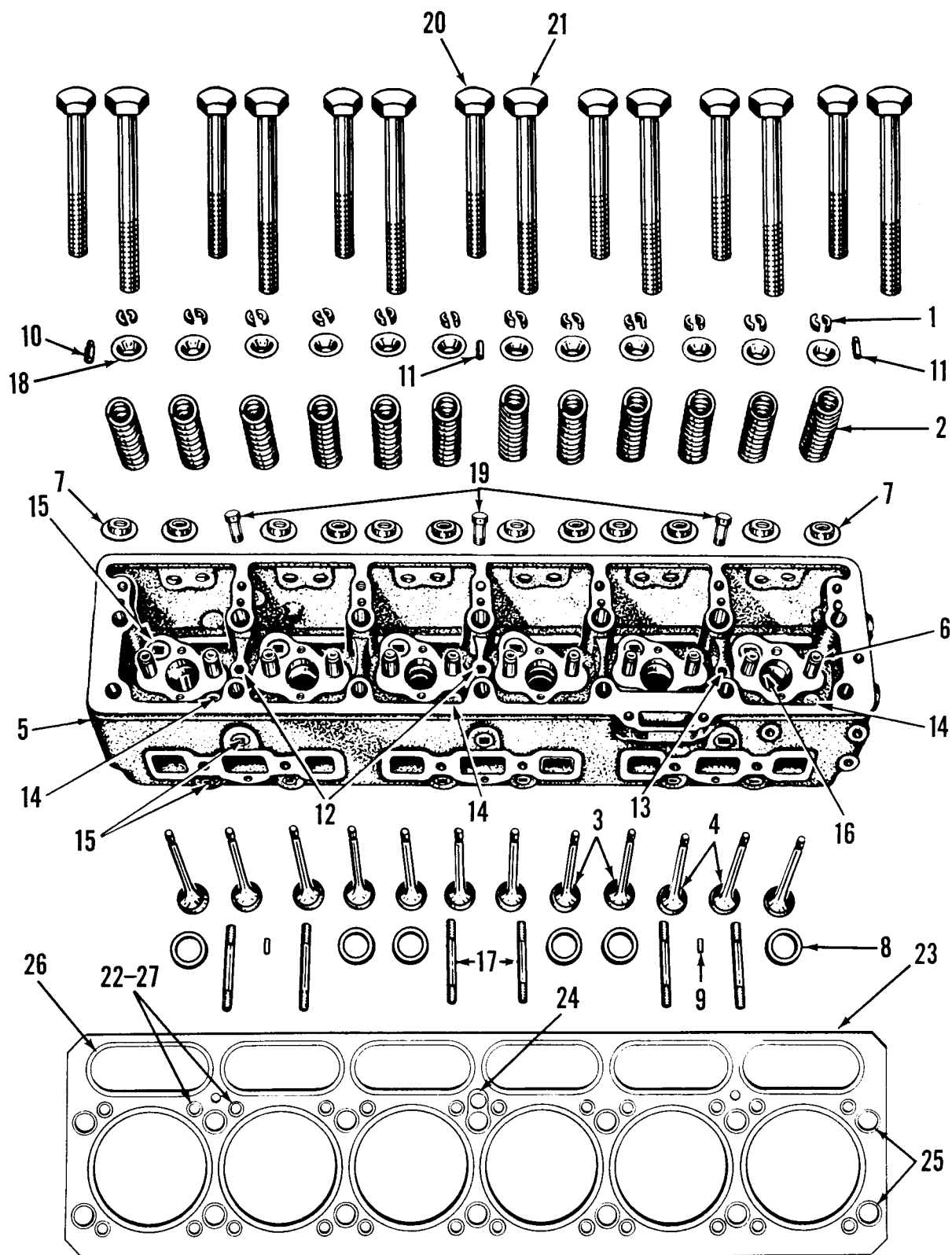
CAMSHAFT
Figure 6



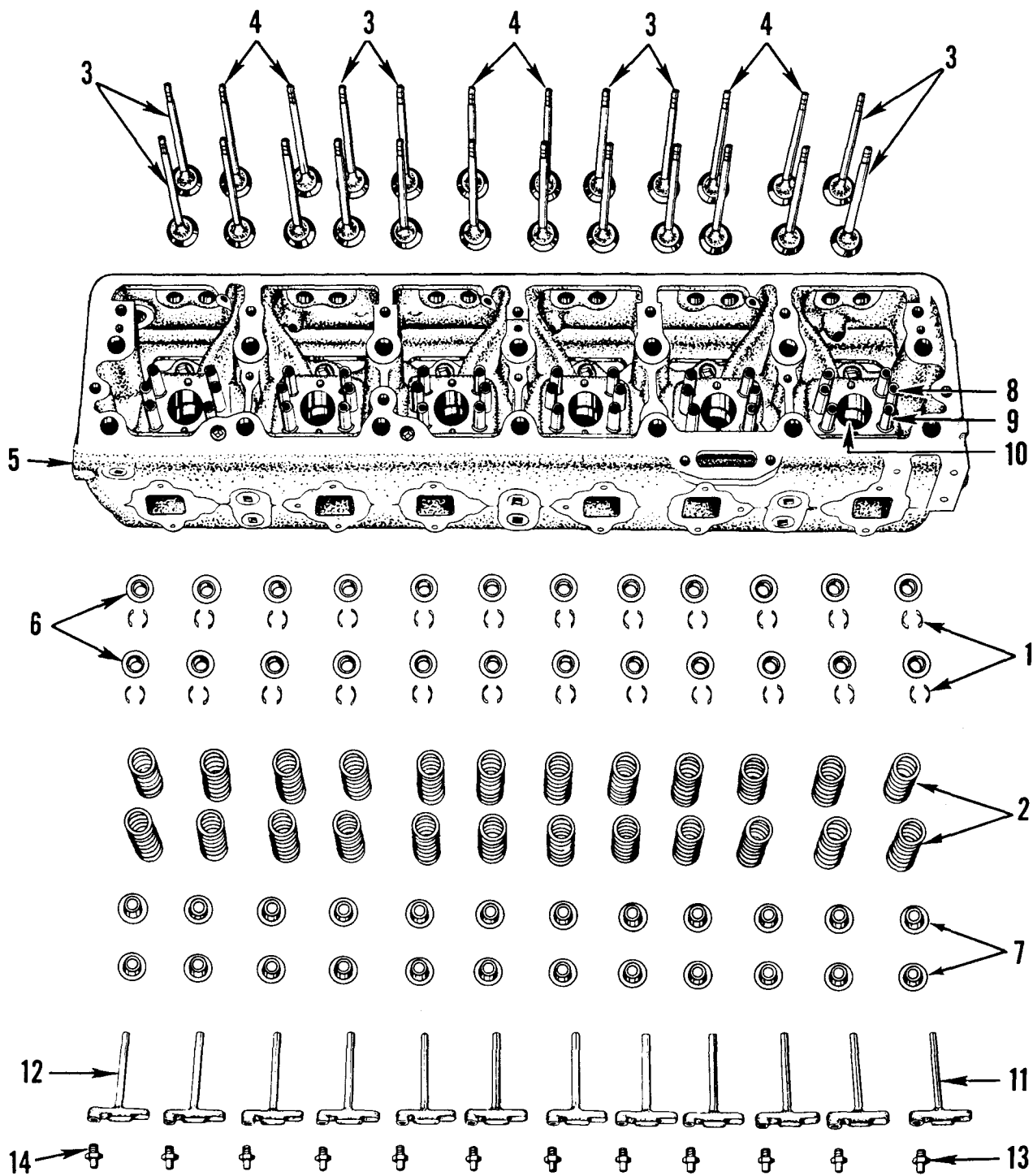
TAPPETS AND PUSH RODS
Figure 7



ROCKER LEVERS, SHAFT AND BEARINGS
Figure 8

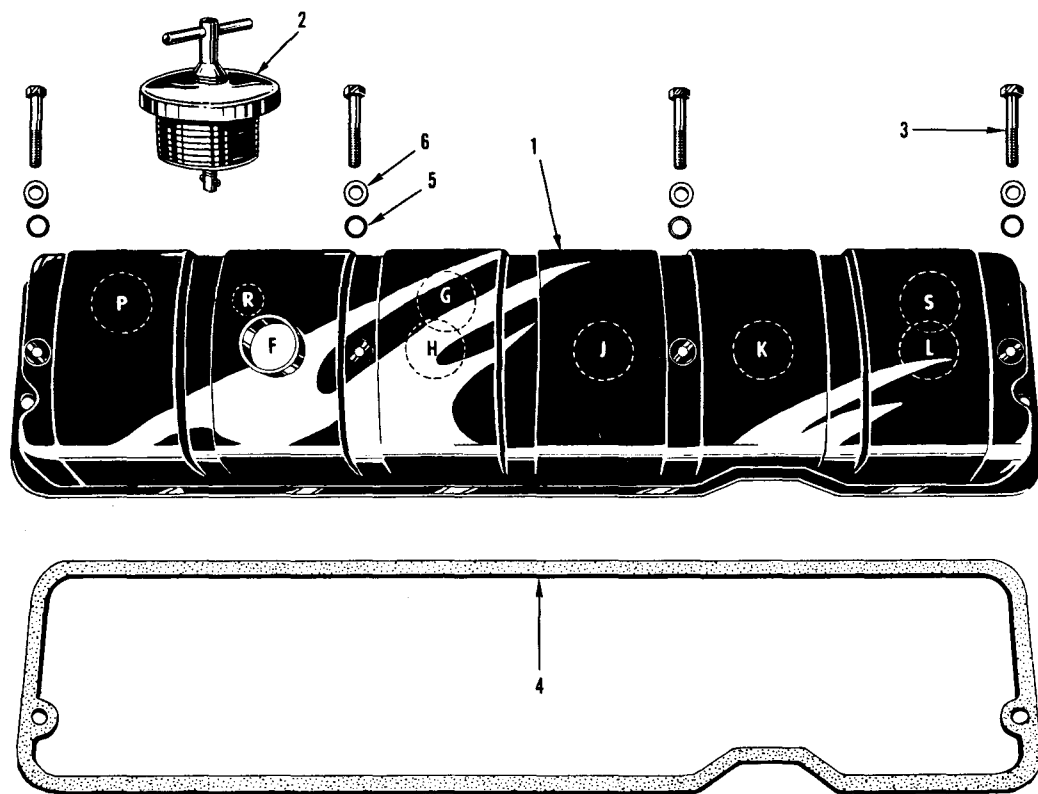


CYLINDER HEAD
TWO VALVE
Figure 9



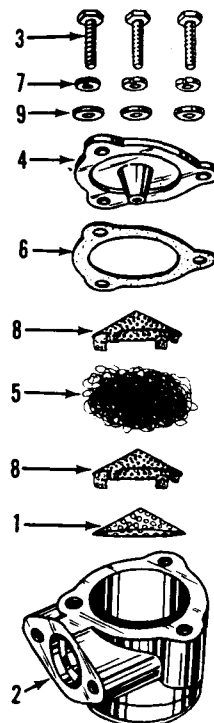
CYLINDER HEAD
FOUR-VALVE

Figure 10



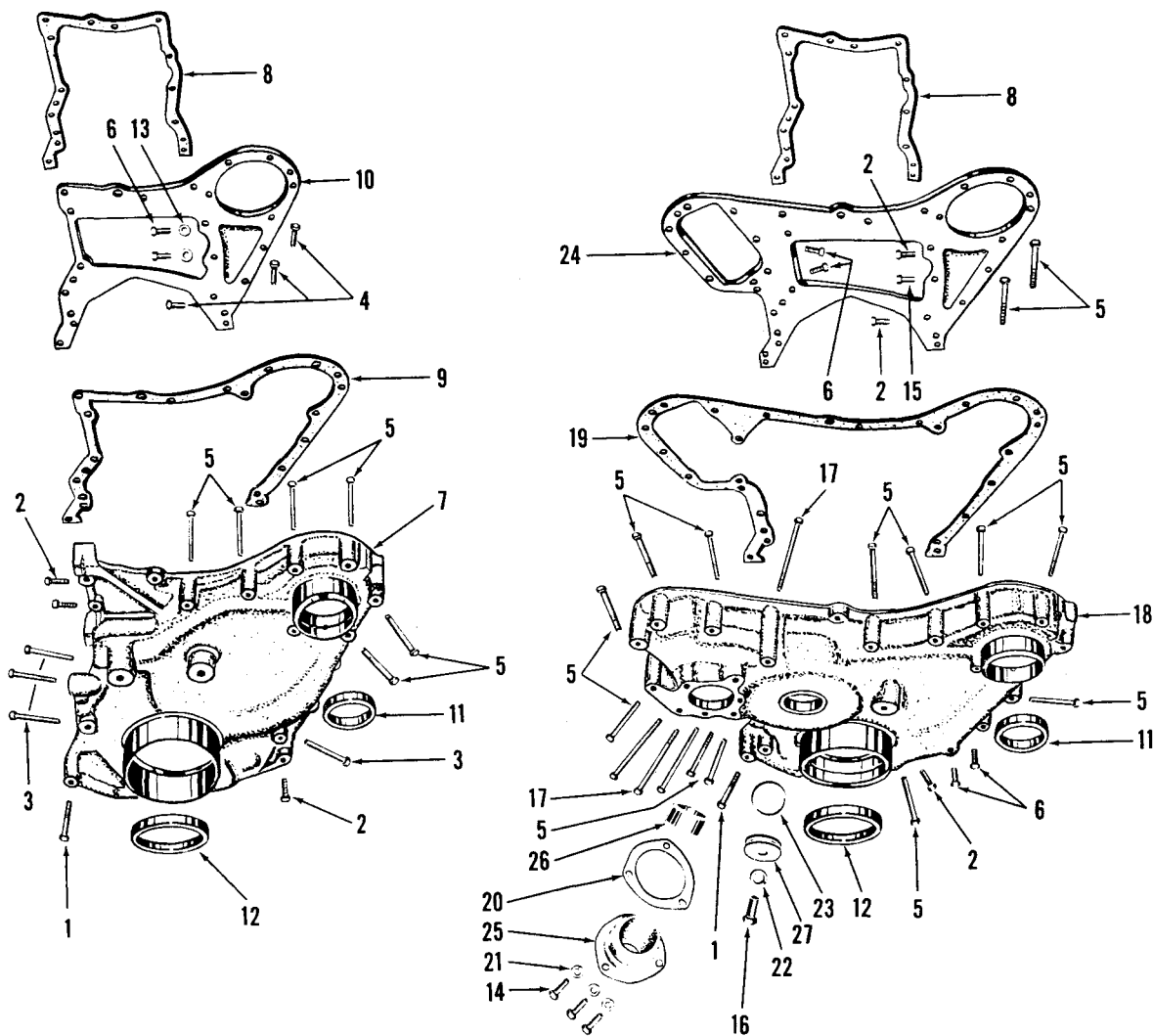
CYLINDER HEAD COVER

Figure 11

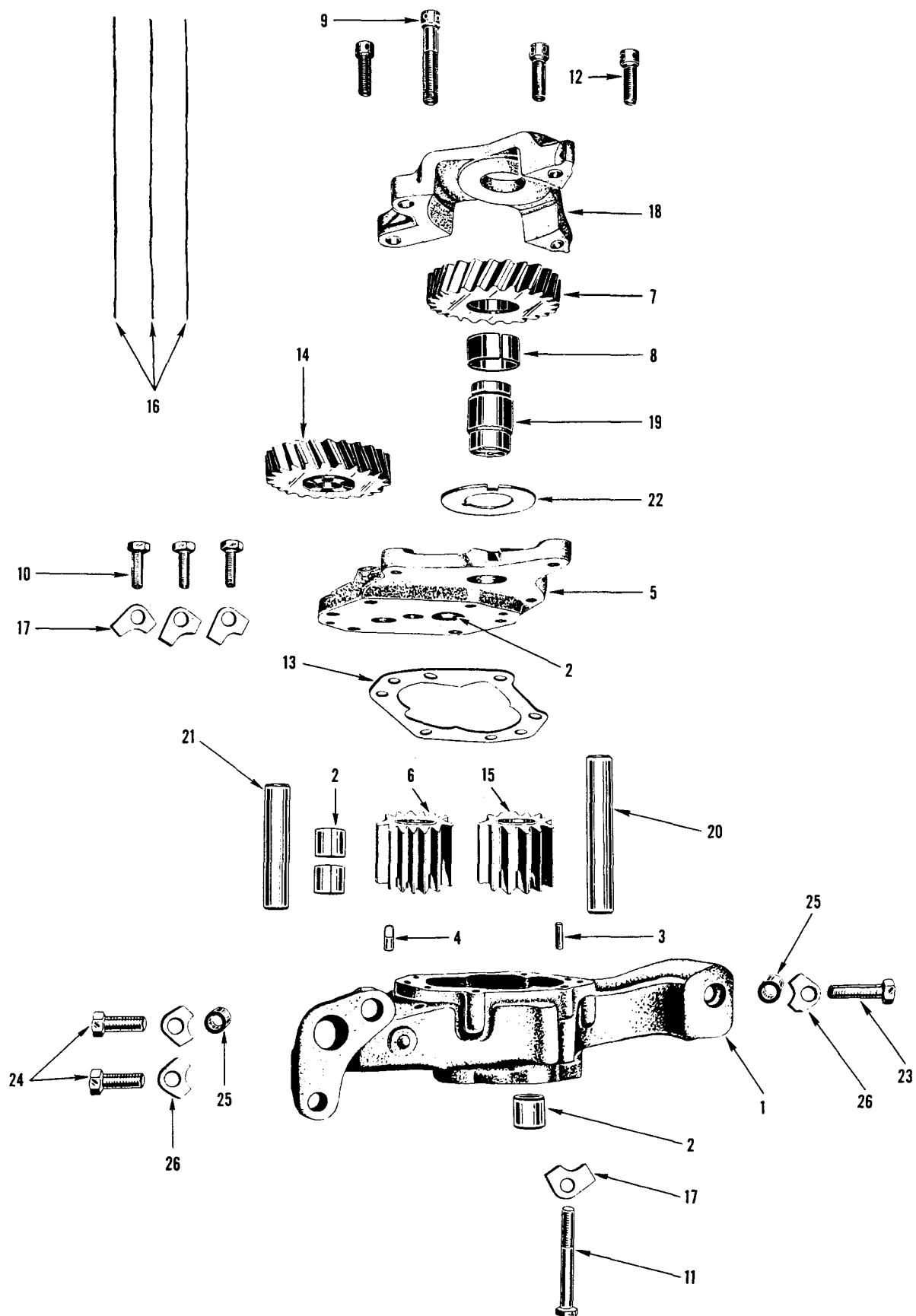


CRANKCASE VALVE BREATHER

Figure 12

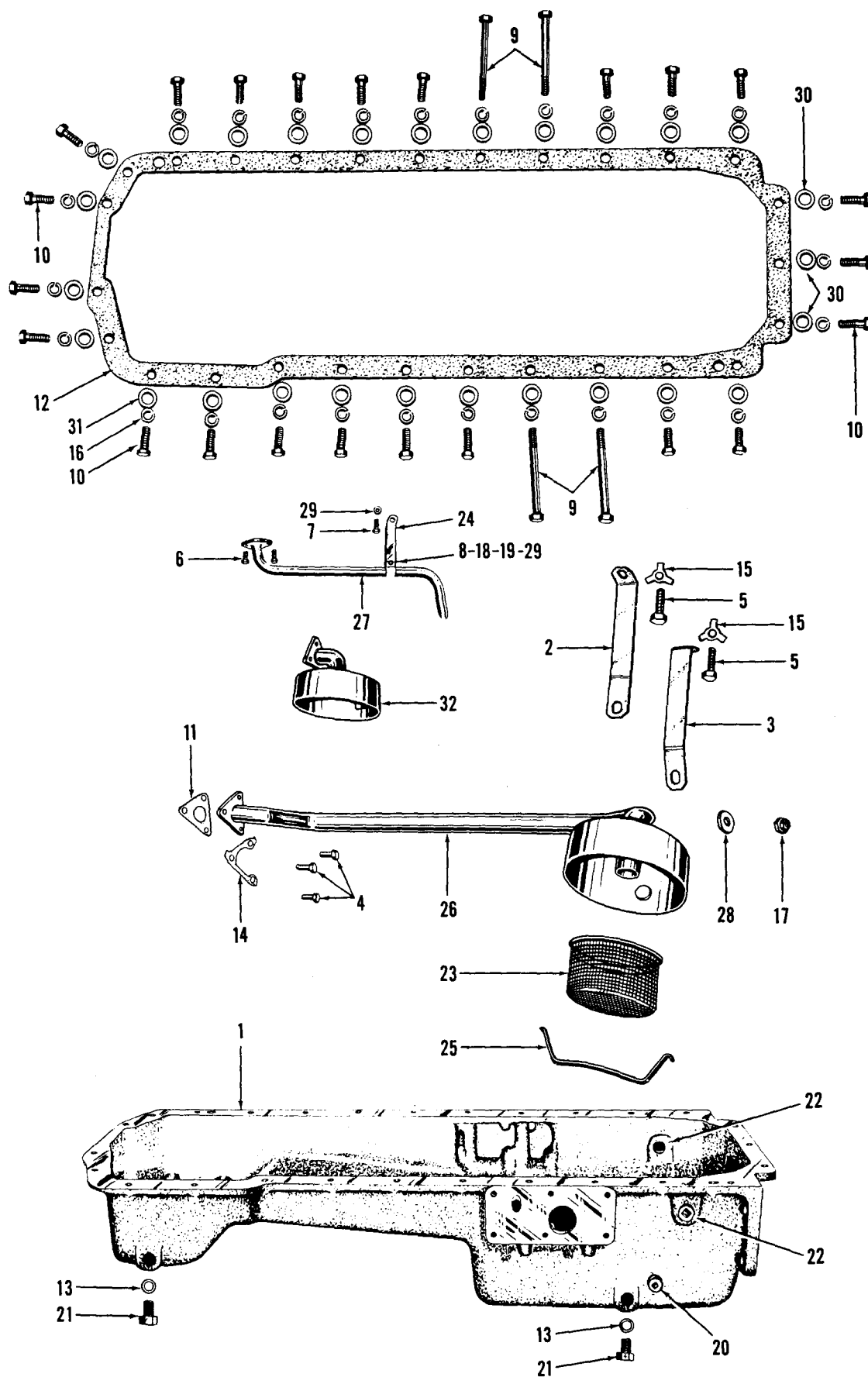


GEAR COVERS AND PLATES
Figure 13

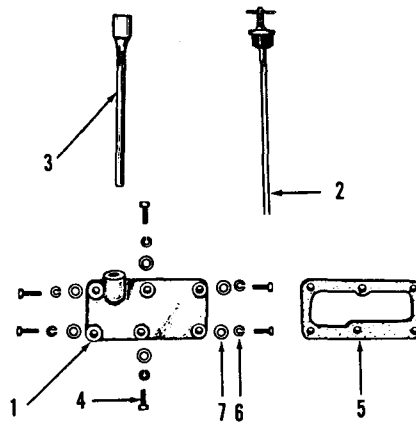


LUBRICATING OIL PUMP

Figure 14

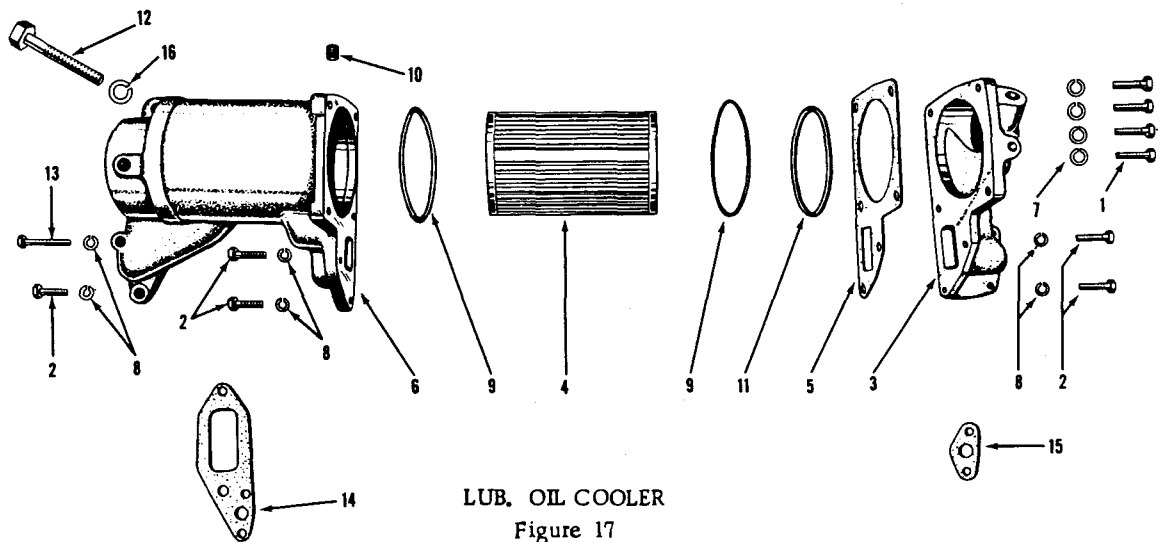


OIL PAN
Figure 15



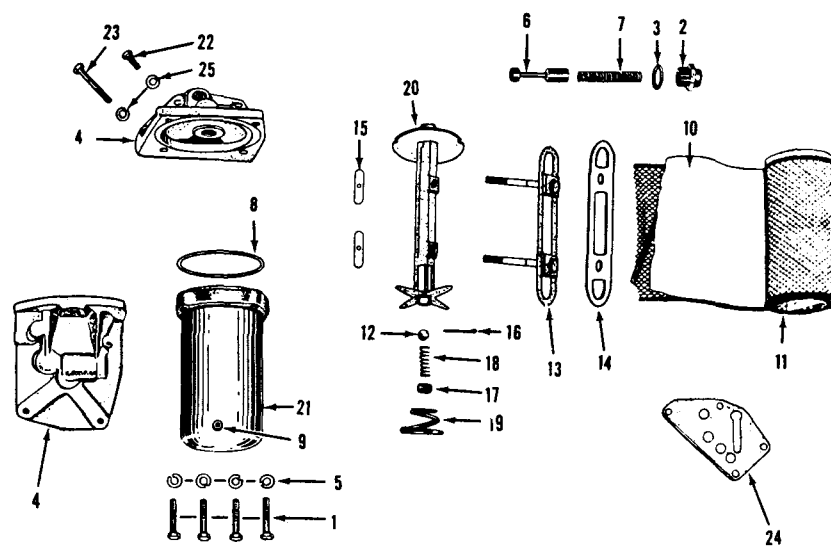
OIL GAUGE BRACKETS, TUBES AND DIPSTICKS

Figure 16



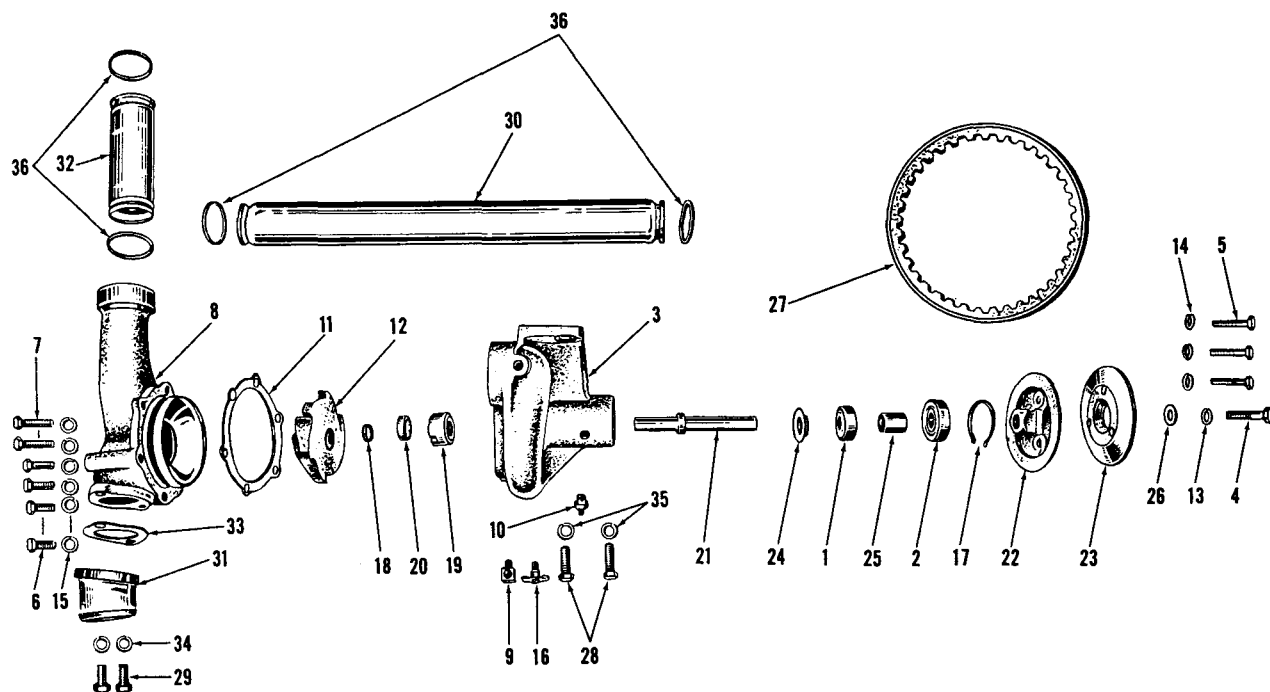
LUB. OIL COOLER

Figure 17



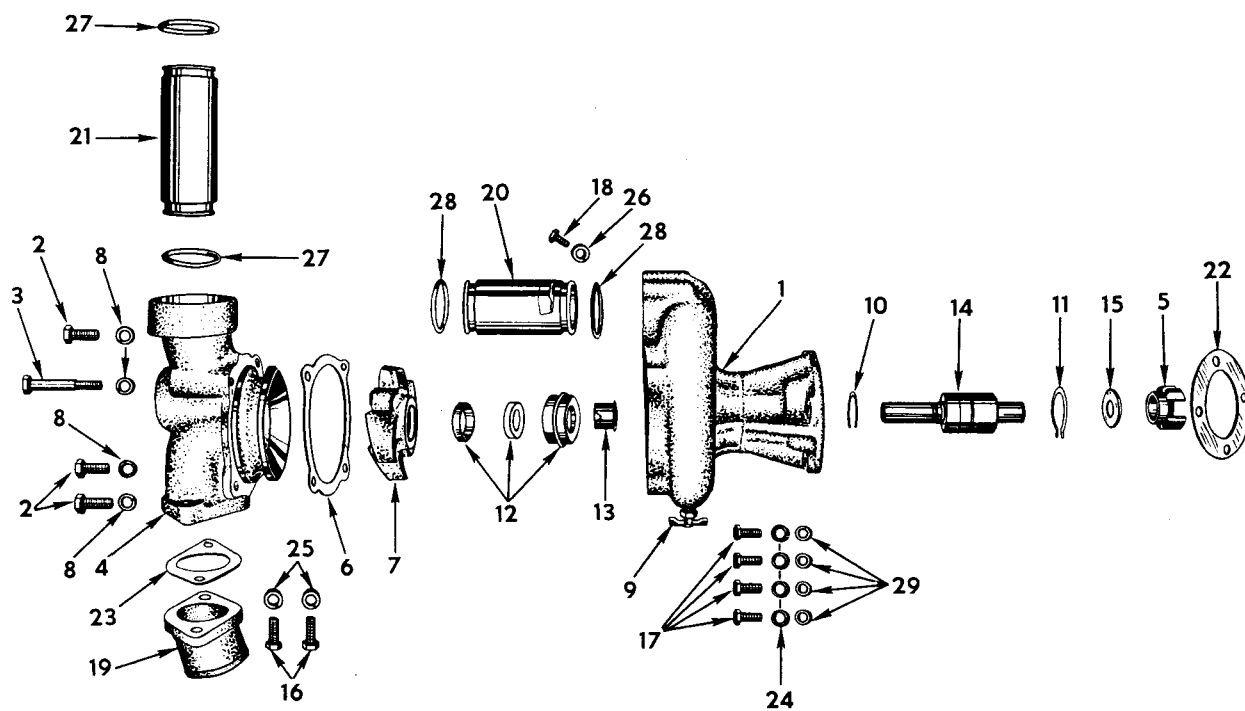
LUB. OIL FILTER

Figure 18



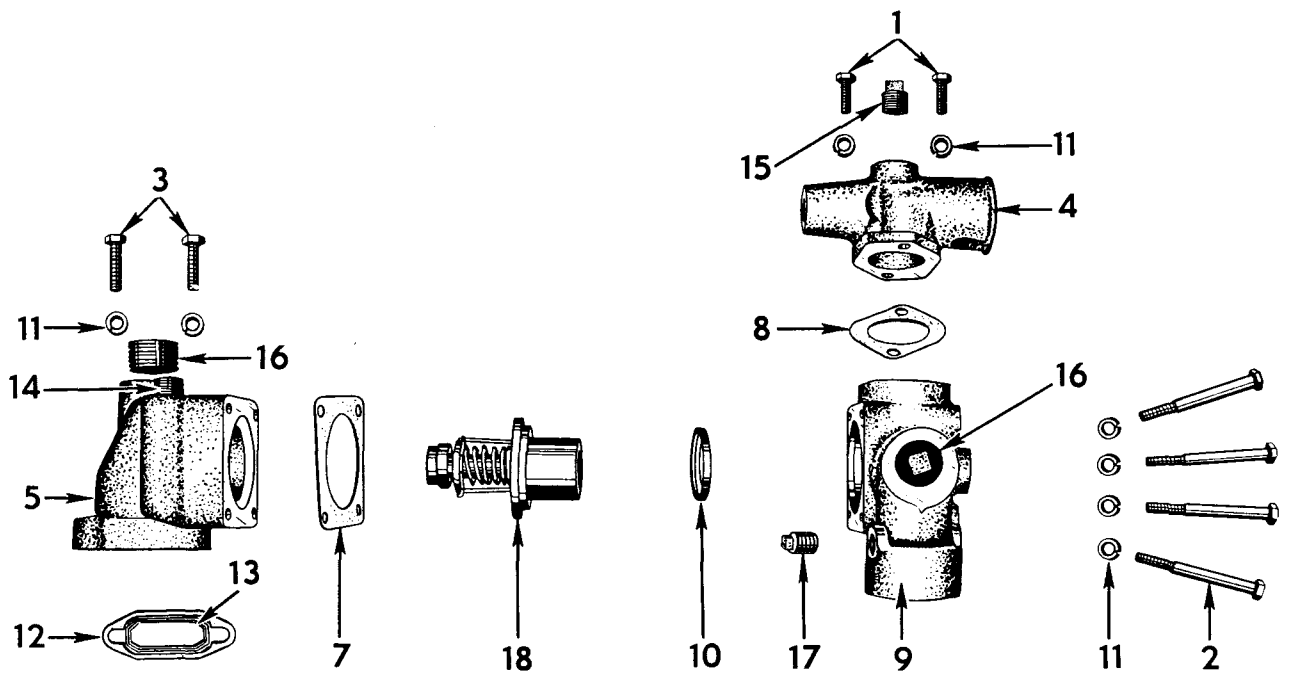
WATER PUMP (BELT DRIVEN)

Figure 19



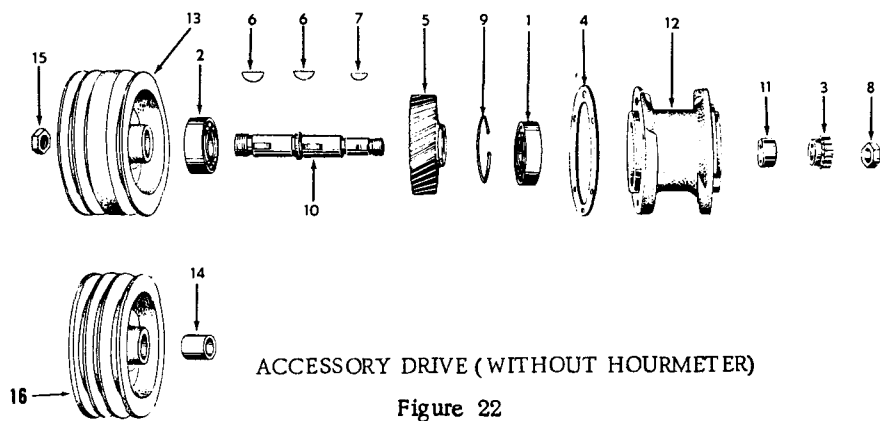
WATER PUMP (SUPERCHARGER DRIVEN)

Figure 20



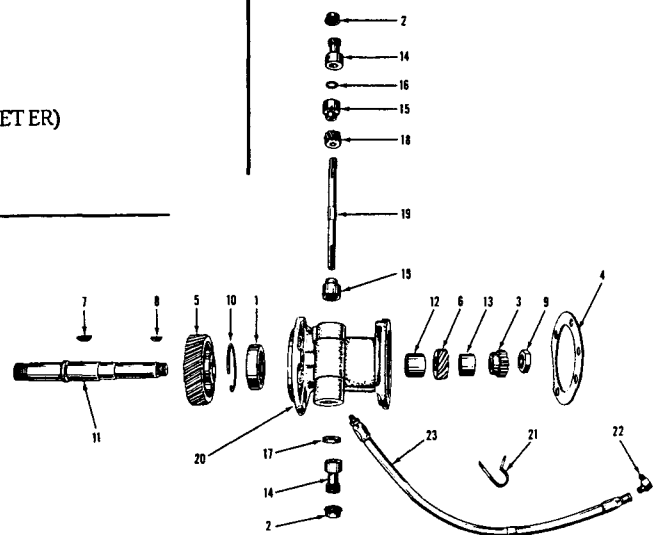
THERMOSTAT HOUSINGS AND WATER CONNECTIONS

Figure 21



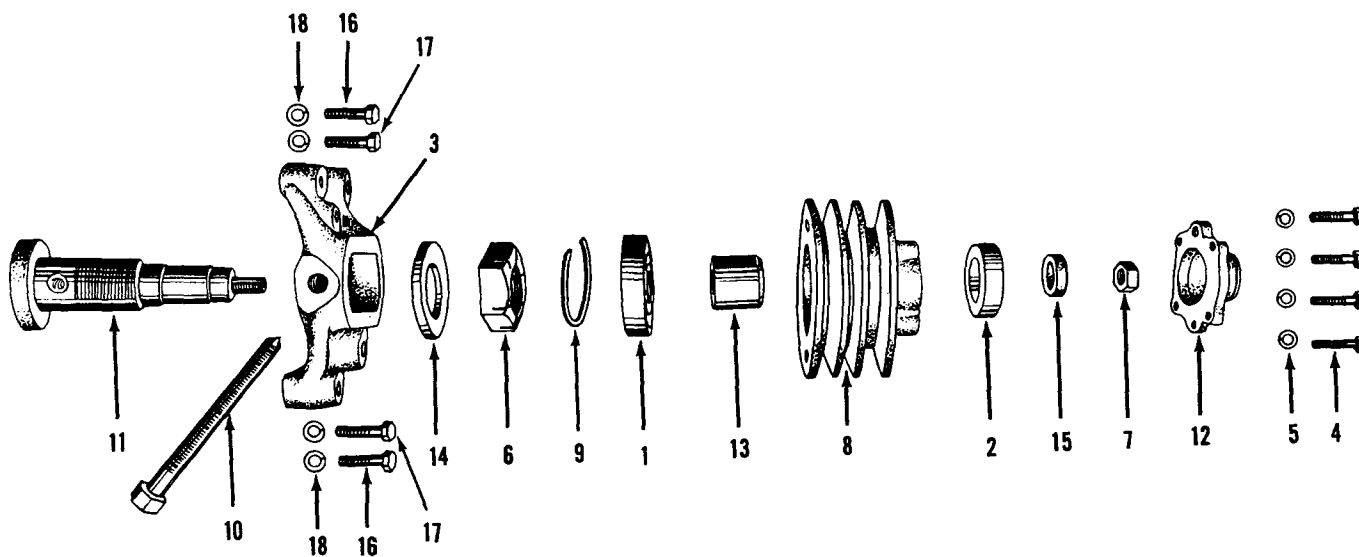
ACCESSORY DRIVE (WITHOUT HOURMETER)

Figure 22



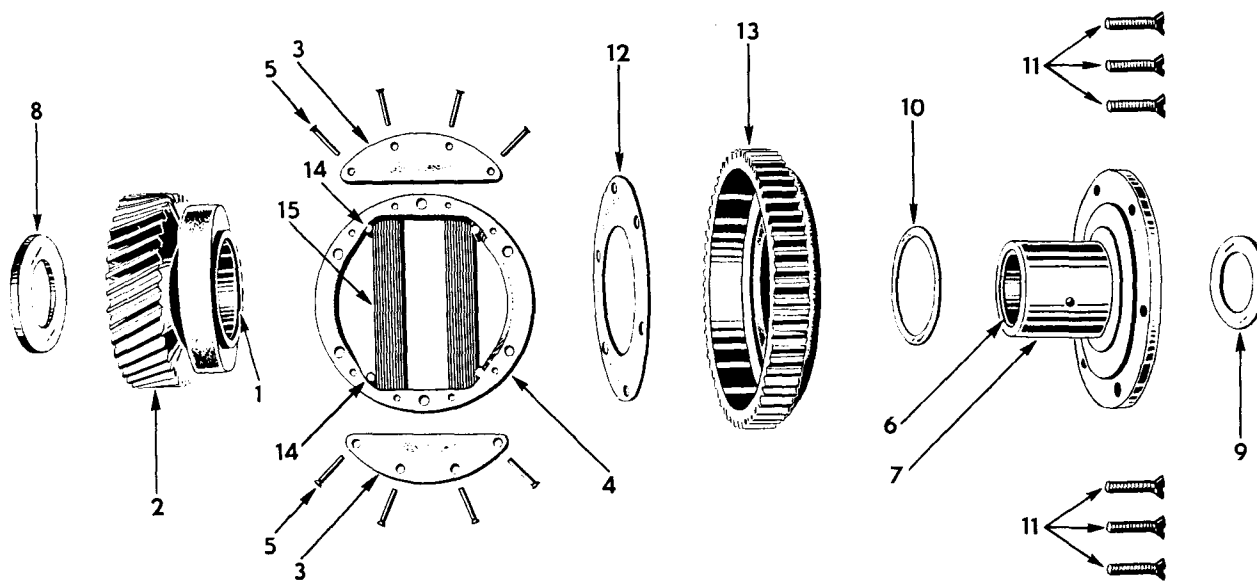
ACCESSORY DRIVE (WITH HOURMETER)

Figure 23



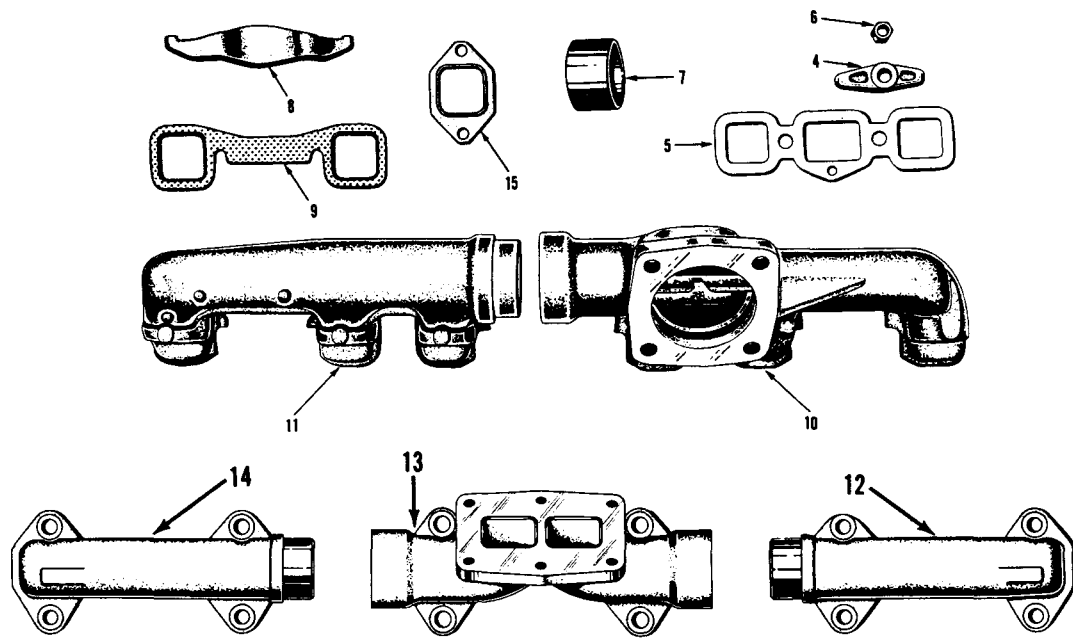
FAN BRACKET AND HUB

Figure 24



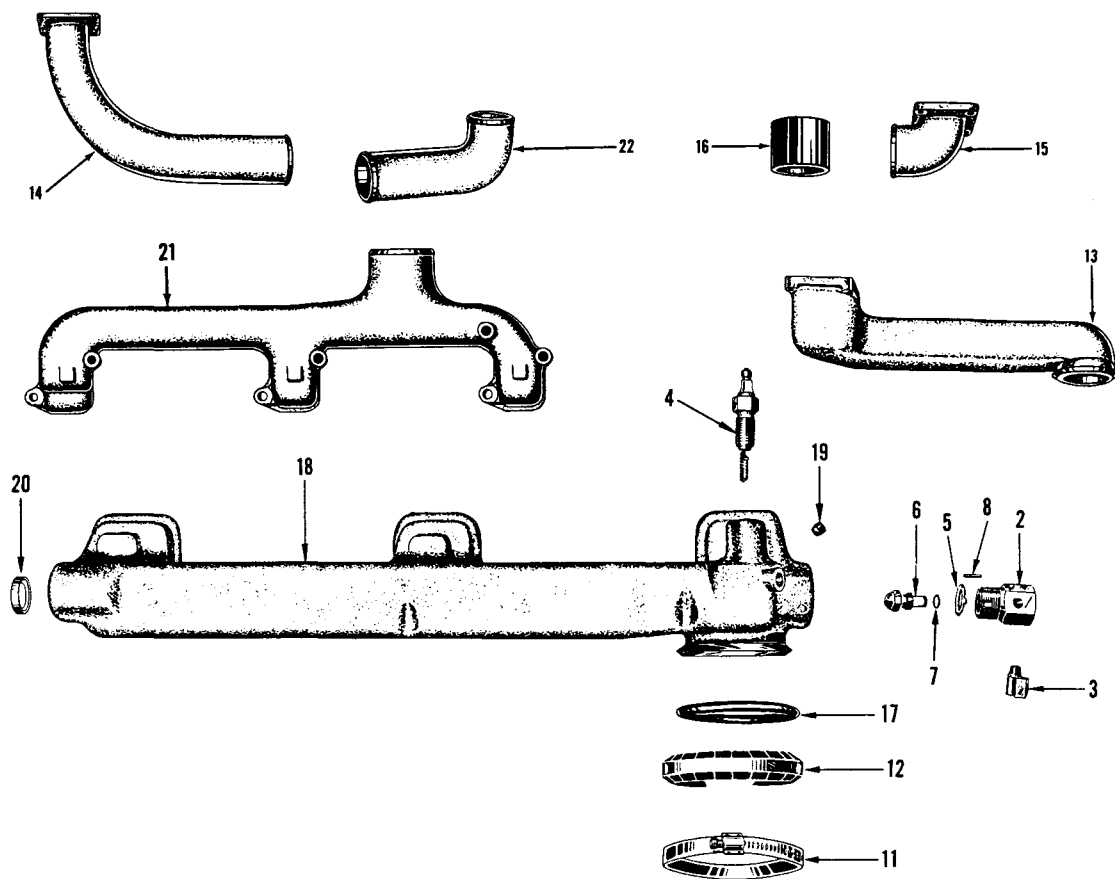
SUPERCHARGER IDLER GEAR and HUB

Figure 25



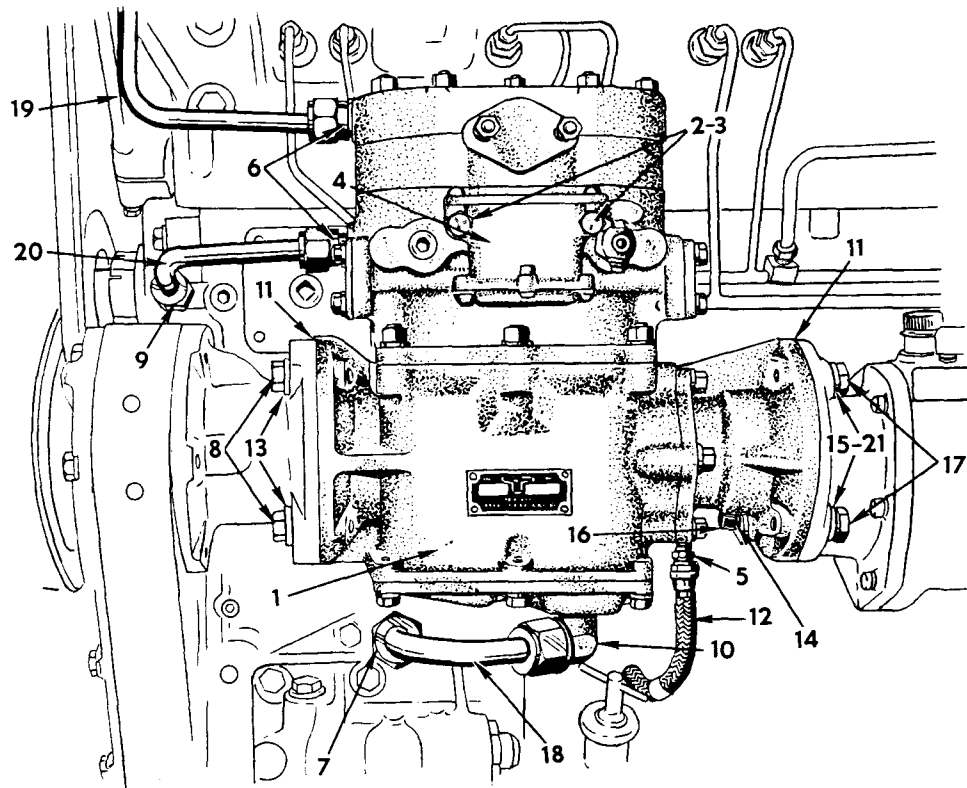
EXHAUST MANIFOLDS

Figure 26



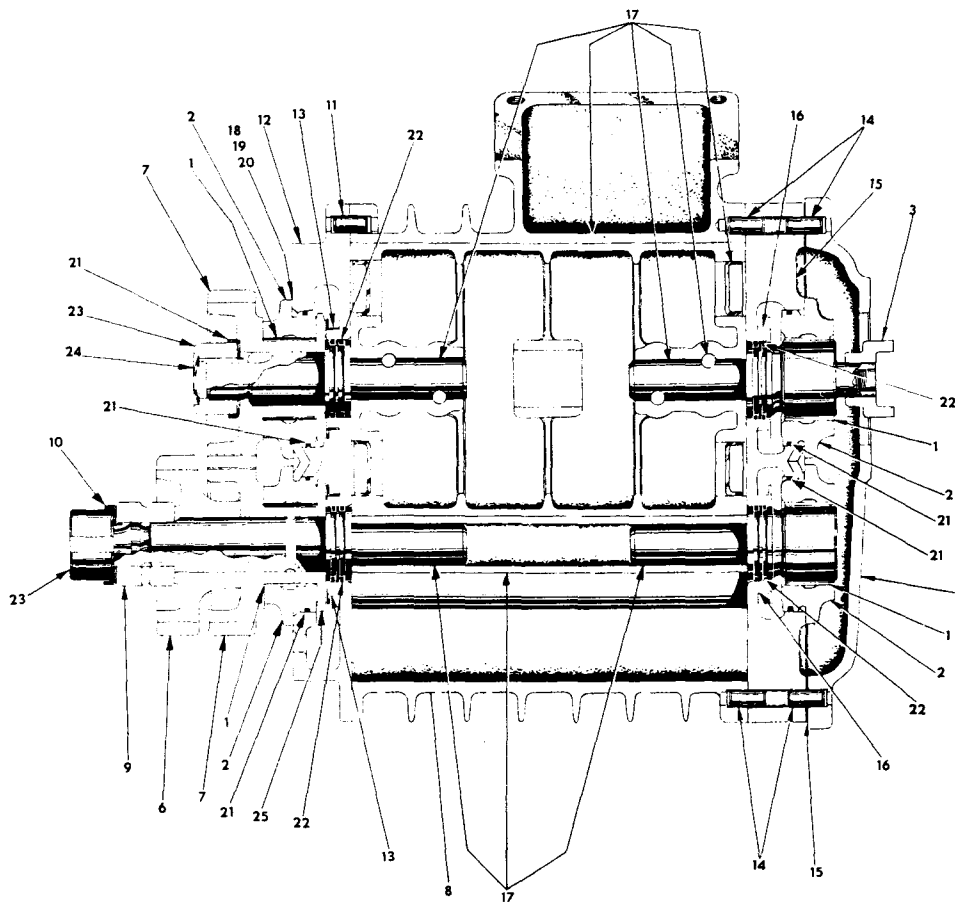
AIR INTAKE MANIFOLDS

Figure 27



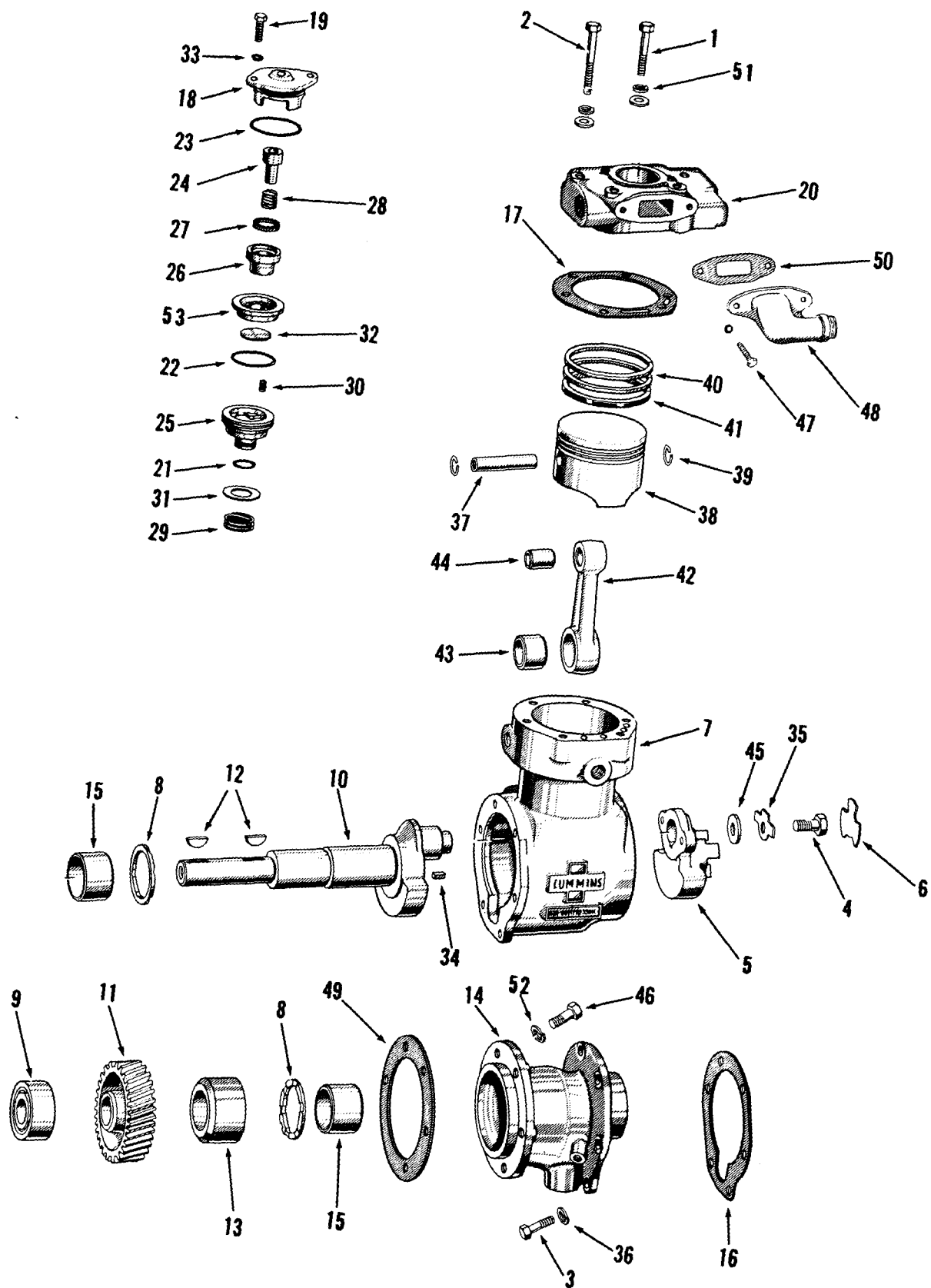
AIR COMPRESSOR

Figure 28

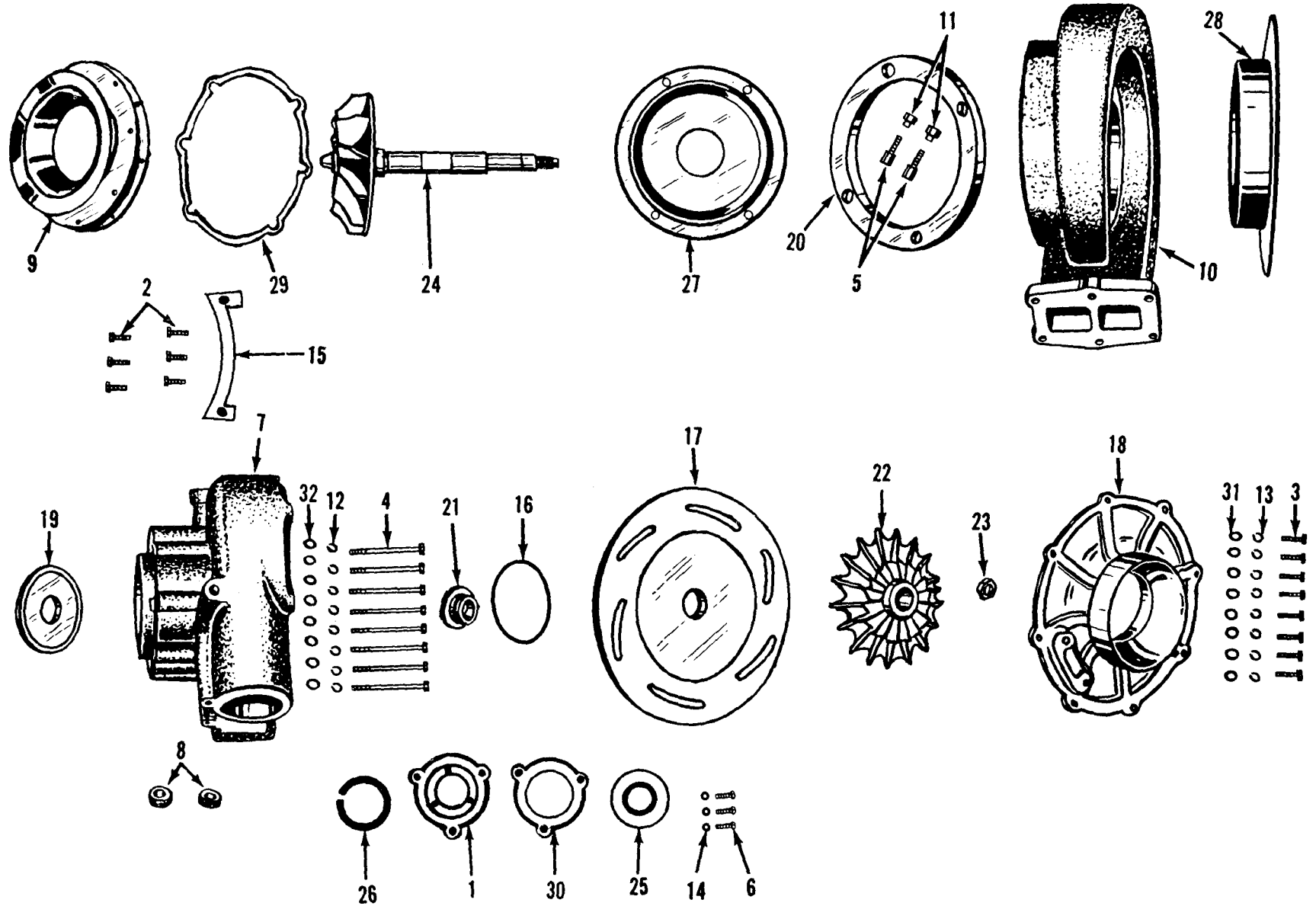


SUPERCHARGER

Figure 29



CUMMINS AIR COMPRESSOR
Figure 30



Turbocharger

Figure 31

SPECIAL EQUIPMENT

to be completed by your Cummins Distributor at the time of the INITIAL INSPECTION.

DESCRIPTION	SERVICE PART NUMBER	DESCRIPTION	SERVICE PART NUMBER
BLOCK CYL.	BM.	GAUGE, TEMP.	
CRANKSHAFT		START, MOTOR	
VIB. DAMPER		GENERATOR	
LINER, CYL.		REG. VOLTAGE	
PISTON	BM.	SWITCH, MAG.	
ROD CONN.	BM.	SWITCH, S.P.	
CAMSHAFT		SWITCH, TOG.	
COVER, GEAR		FILTER, LUB.	
HEAD, CYL.	BM.	FILTER, FUEL	
PUMP, LUB.		CLEANER, AIR	
PUMP, WATER		HOOD, AIR CLEAN	
FAN HUB		AFTER CLEAN	
PUMP, FUEL		PRECL'ER, AIR	
VALVE F.P.S.O.		LUB. OIL COOLER	
GOV. HYDRAULIC		FAN	
INJECTOR	BM.	BELT, FAN	
COMPRESSOR		BELT, GEN.	
PUMP, VAC.		BELT, W. P.	
TURBOCHARGER		BELT, SEA W. P.	
SUPERCHARGER		RADIATOR	
MANIFOLD AIR		HEAT EXCHG.	
MANIFOLD EXH.		SEA WA. PUMP	
PAN, OIL		CLUTCH	
TUBE OIL GAUGE	BM.	RED. GEAR	
GA., OIL LEVEL	BM.	REV. GEAR	
FLYWHEEL HOUS.		F. P. TAKE OFF	
FLYWHEEL	BM.	TORQUE CONV.	
RING GEAR		T. C. COOLER	

This book has been specially prepared for Cummins Model _____

Diesel Engine, serial number _____

Signed _____

SPECIAL EQUIPMENT

to be completed by your Cummins Distributor at the time of the INITIAL INSPECTION.

DESCRIPTION	SERVICE PART NUMBER	DESCRIPTION	SERVICE PART NUMBER
BLOCK CYL.	BM.	GAUGE, TEMP.	
CRANKSHAFT		START. MOTOR	
VIB. DAMPER		GENERATOR	
LINER, CYL.		REG. VOLTAGE	
PISTON	BM.	SWITCH, MAG.	
ROD CONN.	BM.	SWITCH, S.P.	
CAMSHAFT		SWITCH, TOG.	
COVER, GEAR		FILTER, LUB.	
HEAD, CYL.	BM.	FILTER, FUEL	
PUMP, LUB.		CLEANER, AIR	
PUMP, WATER		HOOD, AIR CLEAN	
FAN HUB		AFTER CLEAN	
PUMP, FUEL		PRECL'ER, AIR	
VALVE F.P.S.O.		LUB. OIL COOLER	
GOV. HYDRAULIC		FAN	
INJECTOR	BM.	BELT, FAN	
COMPRESSOR		BELT, GEN.	
PUMP, VAC.		BELT, W. P.	
TURBOCHARGER		BELT, SEA W. P.	
SUPERCHARGER		RADIATOR	
MANIFOLD AIR		HEAT EXCHG.	
MANIFOLD EXH.		SEA WA. PUMP	
PAN, OIL		CLUTCH	
TUBE OIL GAUGE	BM.	RED. GEAR	
GA., OIL LEVEL	BM.	REV. GEAR	
FLYWHEEL HOUS.		F. P. TAKE OFF	
FLYWHEEL	BM.	TORQUE CONV.	
RING GEAR		T. C. COOLER	

This book has been specially prepared for Cummins Model _____

Diesel Engine, serial number _____

Signed _____