



CUMMINS



PARTS



BOOK



SERVICE FIRST

the "big plus" for owners
of Cummins Diesels

You purchased *more than power* when you took delivery of your new Cummins Diesel. You purchased the full resources of an organization that believes SERVICE comes FIRST.

From the fulfillment of your initial order and all during the engine's life, your Cummins distributor and his staff are organized to meet all of your needs efficiently, courteously, through the SERVICE FIRST philosophy. This means you will receive the utmost in performance and profit from your unit.

SERVICE FIRST is the "big plus" you will receive from Cummins. No wonder more and more engine users specify their power and *Standardize* on Cummins.



PARTS BOOK

FOR THE ENGINE OWNER

BULLETIN 966793-A



CUMMINS

C-160 • C-175 • C-180 DIESEL ENGINES

CUMMINS ENGINE COMPANY, INC., COLUMBUS, INDIANA

OVERSEAS FACTORIES

Cummins Engine Company Limited
Shotts, Lanarkshire, Scotland

Cables: Cumscot-Shotts, Telex

INTERNATIONAL SALES AND SERVICE

Cummins Diesel International Ltd.

Nassau, Bahamas

Cables: Cumnas

Motores Cummins Diesel do Brasil Ltda.

Sao Paulo, Brazil

Cables: Cumbras

European Office

Zurich, Switzerland

Cables: Cumzuri

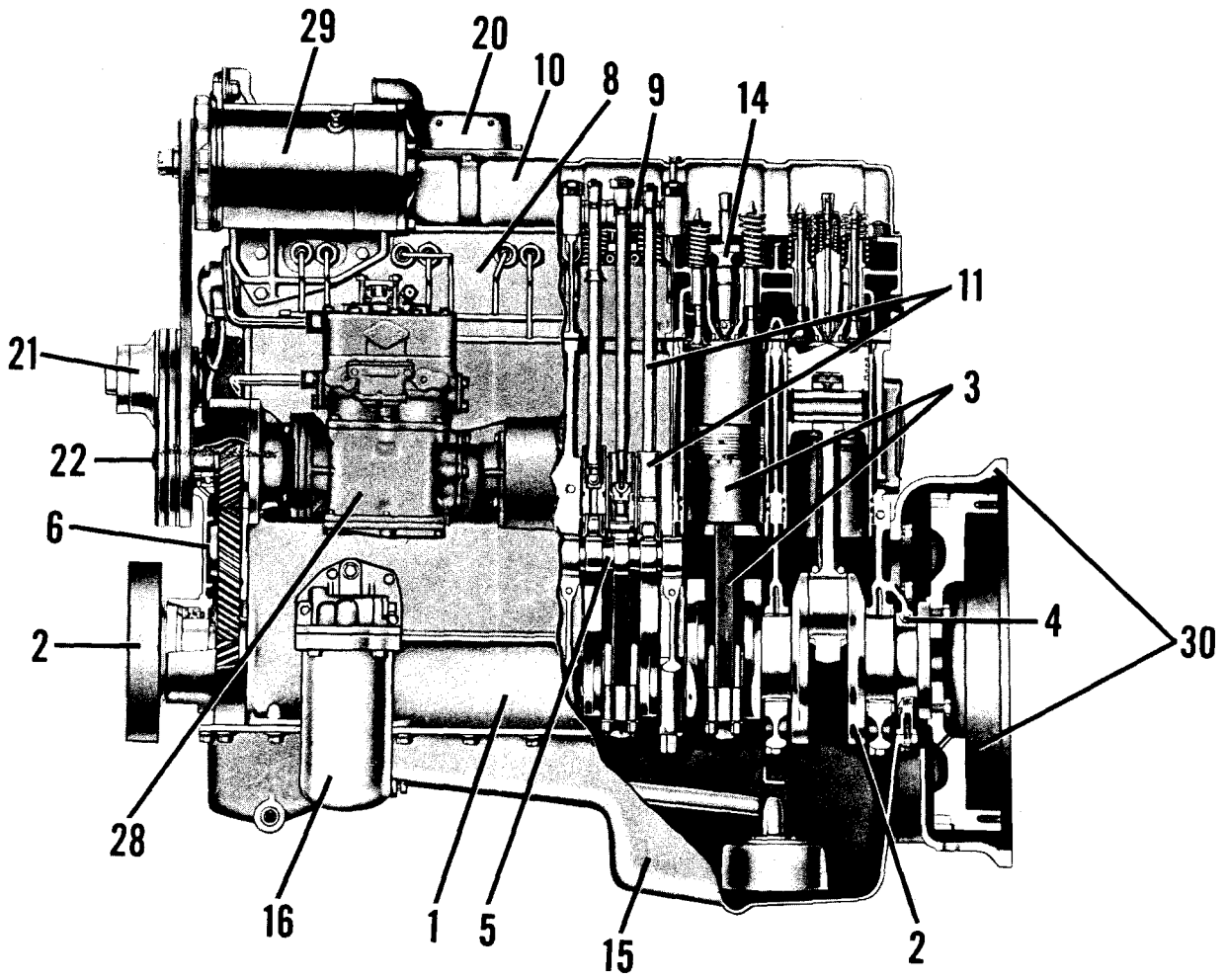


TABLE OF

Illust. No.		Page No.
1.	Cylinder Block	1
2.	Crankshaft and Damper	1-2
3.	Connecting Rods and Pistons	2
4.	Rear Cover	2
5.	Camshaft	2
6.	Gear Cover	4-5
7.	Crankcase Breather	4
8.	Cylinder Head	3
9.	Rocker Levers	2-3
10.	Cylinder Head Cover	4
11.	Tappets and Push Rods	2
12.	Fuel Filter	10
13.	PT Fuel System	10
14.	Injector	10
15.	Oil Pan	5-6
16.	Lubricating Oil Filter	7
17.	Lubricating Oil Pump	5
18.	Lubricating Oil Cooler	6
19.	Water Pump (Belt Driven)	7-8
20.	Thermostat Housing and Water Connections	8-9
21.	Fan Bracket and Hub	9
22.	Accessory Drive Pulley	9
23.	Air Cleaner	12
24.	Luberfiner Filter (By-pass)	7
25.	Turbocharger	13
26.	Air Intake Manifold	11
27.	Exhaust Manifold	11
28.	Air Compressor	15
29.	Electrical Equipment	14
30.	Flywheel and Flywheel Housing	12
31.	Supercharger (Gear Driven)	13-14
32.	Water Filter	12

JMMINS

INSTRUCTIONS

for ordering parts

Genuine Cummins Parts and service facilities are world-wide. There are nearly 500 Cummins Distributors and Dealers conveniently located in the principal cities of the United States and Canada, and almost 200 Distributors situated elsewhere throughout the free world. Each distribution outlet is thoroughly equipped with technical data, factory-trained mechanics, modern equipment and a full, adequate stock of Genuine Cummins Parts.

For quicker and better service, your parts requirements should be ordered from your nearest authorized Cummins Distributor or Dealer. At any of the locations prompt, intelligent, courteous service is a basic trademark. Each is ready and eager to help in every possible way through personal contact or through the mail—at your convenience.

The satisfactory ordering and receiving of parts by the purchaser is greatly dependent upon the proper use of available information. In order that all avoidable errors may be eliminated, the following instructions are offered as the purchaser's guide:

1. Write your order clearly, using a typewriter if possible.
2. Be sure to list the correct part number. If in doubt as to the correct part number, state the model and serial number of the engine on which the part is to be used. Part numbers are usually located in various places on the part itself.
3. When possible, arrange your purchase order in part number numerical sequence.
4. Always specify shipping instructions—"Best Way" is satisfactory if you have no preference.
5. State your company name and shipping address clearly.

Genuine Cummins Parts mean QUALITY! They're designed and engineered to fit best in your Cummins Diesel. Each part is made of the highest quality material—on the most accurate of machines—by the top craftsmen of the trade.

You can be sure a Genuine Cummins Part will fit better—do the job better—lessen the chances of costly breakdown. When you buy replacement parts, buy quality. Buy Genuine Cummins Parts!

YOU OWN THE BEST . . . REPAIR WITH THE BEST

Illust. Ref. No.	Cummins Part No.	Part Name	No. Req. Per Eng.	Illust. Ref. No.	Cummins Part No.	Part Name	No. Req. Per Eng.
---------------------	---------------------	-----------	----------------------	---------------------	---------------------	-----------	----------------------

CYLINDER BLOCK

Figure 1

GROUP A—Model: C-160, C-175

	BM-55041	Block assembly, cylinder (128488)	1
1	100673	Bushing, camshaft	6
2	122936	Capscrew, cylinder head (short)	7
3	122937	Capscrew, cylinder head (long)	7
4	104293	Capscrew, main bearing	14
	107947	Cock, drain	1
5	68445	Dowel, cylinder head to block	2
6	67313	Dowel, main bearing cap	2
7	68568	Dowel, oil pan to block	1
8	70645	Dowel, oil pan to block	1
9	70653	Dowel, gear case cover	1
10	60408	Dowel, gear case cover	1
	69236	Dowel, lubricating pump to block	2
11	60533	Lockplate, main bearing capscrew	14
12	112076	Plug, pipe, rear water drain	1
13	66351	Plug, pipe, Allen head	4
14	69901	Plug, pipe, hex head	3
15	S-911-B	Plug, pipe, oil gallery	9
16	S-910-B	Plug, pipe, oil gallery to tappet	2
17	S-915-A	Plug, pipe	1
18	S-935-B	Plug, pipe water drain	1
	S-962	Plug, pipe water header	1
19	S-995	Plug, pipe	1
	66351	Plug, pipe	1
	112076	Plug, pipe	1
	113995	Washer, plain, cylinder head capscrew	14
20	S-109	Capscrew, water header end cover	2
	S-109	Capscrew, water header side cover	2
21	S-106-A	Capscrew, oil transfer connection	4
22	118616	Connection, oil transfer	1
23	65473	Cover, water header end	1
24	100902	Cover, water header side	1
25	65474	Gasket, water header end cover	1
26	68624	Gasket oil transfer connection (lower)	1
27	123119	Gasket, oil transfer connection (upper)	1
28	68619	Gasket, water header side cover	1
	S-604	Lockwasher, water header side cover	2
29	S-604	Lockwasher, water header end cover	2
30	S-630	Lockwasher, oil transfer connection	4
31	112851	Liner, cylinder	6
32	112847	Packing, cylinder liner	12
	S-902	Plug, pipe (1/8")	4
	S-908-A	Plug, fuse (1/8")	2
	67622	Plug, pipe (1/2")	1

CYLINDER BLOCK(Cont'd)

GROUP B—Model: C-180

Same as group A except parts shown below:

	BM-67340	Block assembly, cylinder (136804)	1
	60408-A	Dowel, gear case cover	1
35	69737	Capscrew, idler shaft	3
36	S-611-A	Lockwasher, idler gear shaft	3
37	136803	Shaft, supercharger idler gear	1

CRANKSHAFT

Figure 2

GROUP A—All Models

	BM-49786	Crankshaft assembly	1
1	106071	Crankshaft (tapered)	1
2	43213-1	Gear, crankshaft pinion	1
3	S-331	Key, crankshaft gear	1
	BM-27522	*Main bearing set	1
4	44297	*Bearing, main (lower)	7
5	43214	*Bearing, main (upper)	7
6	124922	Pin, thrust ring to bearing groove	4
7	68558	Ring, crankshaft thrust	4
8	S-118-A	Capscrew, oil slinger	2
9	S-153-B	Capscrew, retainer	1
	104293	Capscrew, main bearing	14
10	131309	Hub, vibration damper (requires 70522 oil seal)	1
11	70076	Lockplate, oil slinger	2
	60533	Lockplate, main bearing capscrew	14
12	S-613	Lockwasher, retainer	1
13	108170	Retainer, crankshaft	1
14	70077	Slinger, crankshaft oil	1

*Main bearings and main bearing sets may be purchased in Standard, .010", .020", .030", .040" undersize. When ordering bearings always state the size required.

VIBRATION DAMPER

Figure 3

GROUP A—Model: C-160

1	121238	Damper, vibration (rubber bonded)	1
Mounting Parts			
2	69793	Capscrew, damper to hub	6
3	68909-1	Lockplate, damper	3

PARTS INDENTED ARE INCLUDED IN THE PART UNDER WHICH THEY ARE INDENTED

Illust. Ref. No.	Cummins Part No.	Part Name	No. Req. Per Eng.	Illust. Ref. No.	Cummins Part No.	Part Name	No. Req. Per Eng.
---------------------	---------------------	-----------	----------------------	---------------------	---------------------	-----------	----------------------

VIBRATION DAMPER (Cont'd)

Figure 3

GROUP B—Model: C-17 5, C-180

Same as Group A except parts shown below:

1	130483	Damper, vibration	1
---	--------	-------------------	---

CONNECTING RODS AND PISTONS

Figure 4

GROUP A—All Models

1	BM-56857	Connecting rod and bushing assembly (127726) (tapered)	6
2	110275	Bolt, "U", connecting rod	12
3	122930	Bushing, piston pin	12
4	60358	Lockplate, connecting rod nut	12
5	S-265	Nut, connecting rod bolt	24
6	127730	Bearing, connecting rod	12
	BM-55050	Set, piston ring	1
7	112880	Ring, compression (chrome)	6
8	112870	Ring, compression (plain)	12
9	118630	Ring, oil control	6
	BM-60610	Piston assembly (tapered) (Automotive)	6
10	112904	Pin, piston	6
11	130500	Piston	6
12	S-16256	Ring, piston pin snap	12
	BM-62730	Piston assembly (tapered) (Agricultural, Industrial, and Marine)	6
10	112904	Pin, piston	6
11	130360	Piston	6
12	S-16256	Ring, piston pin snap	12

Pistons and rings are available in .020", .030" and .040" oversize.

REAR COVER

Figure 5

GROUP A—All Models

1	106203	Cover, rear	1
Mounting Parts			
2	S-106-A	Capscrew, rear cover	2
3	S-111	Capscrew, rear cover	6
4	102151	Gasket, rear cover	1
5	S-605	Lockwasher, rear cover capscrew	8
6	113410	Seal, rear cover oil	1

CAMSHAFT

Figure 6

GROUP A—All Models

	BM-54813	Camshaft assembly	1
1	121720	Bearing, camshaft front	1
2	121580	Camshaft	1
3	102002	Gear, camshaft 20836	1
4	S-310	Key, Camshaft gear	1
Mounting Parts			
5	S-112	Capscrew, camshaft bearing	3
6	S-604	Lockwasher, bearing capscrew	3

TAPPETS AND PUSH RODS

Figure 7

GROUP A— All Models

1	BM-40616	Tappet assembly, injector (113745)	6
2	108187	Lockwire, injector tappet pin	6
3	113748	Pin, injector tappet roller	6
4	60521	Roller, injector tappet	6
9	108156	Sleeve, valve tappet guide	6
5	BM-40615	Tappet assembly, intake and exhaust valve (113746)	12
6	108186	Lockwire, valve tappet pin	12
7	113749	Pin, valve tappet roller	12
8	69027	Roller, valve tappet	12
9	108156	Sleeve, valve tappet guide	12
10	BM-46364	Rod, intake and exhaust push (112695)	12
11	BM-46363	Rod, injector push (112699)	6
Mounting Parts			
12	108158	Guide, tappet	18
	64482	Lockwire	2
	67089	Lockwire	6
13	S-684	Washer, tappet guide	18

ROCKER LEVERS, SHAFT AND BEARINGS

Figure 8

GROUP A— All Models

	BM-39554	Lever assembly, exhaust rocker	6
1	BM-39551	Lever and bushing assembly (123984)	6
2	104439	Bushing, exhaust rocker lever	6
3	107719	Nut, rocker lever adjusting screw	6

WHEN ORDERING PARTS ALWAYS GIVE ENGINE SERIAL NUMBER

Illust. Ref. No.	Cummins Part No.	Part Name	No. Req. Per Eng.	Illust. Ref. No.	Cummins Part No.	Part Name	No. Req. Per Eng.
---------------------	---------------------	-----------	----------------------	---------------------	---------------------	-----------	----------------------

ROCKER LEVERS, SHAFT AND BEARINGS (Cont'd)

Figure 8

GROUP A—(Cont'd)

4	103863	Screw, rocker lever adjusting	6
	BM-40908	Lever assembly, injector rocker	6
5	BM-40387	Lever bushing and socket assembly	6
6	103864	Socket, injector rocker lever	6
	BM-40386	Lever and bushing assembly (107747)	6
7	60486	Bushing, injector rocker lever	6
8	S-232	Nut, injector rocker lever adjusting screw	6
9	7199-3	Screw, injector rocker lever adjusting	6
	BM-39556	Lever assembly, intake rocker	6
10	BM-39552	Lever and bushing assembly (123983)	6
11	104439	Bushing, intake rocker lever	6
3	107719	Nut, rocker lever adjusting screw	6
4	103863	Screw rocker lever adjusting	6
12	114452	Bearing, rocker shaft (No. 3 and No. 5 position)	2
13	114450	Bearing, rocker shaft (No. 4 position)	1
14	114451	Bearing, rocker shaft (No. 1 and No. 7 position)	2
15	114453	Bearing, rocker shaft (No. 2 and No. 6 position)	2
16	BM-41693	Shaft, rocker lever	1
Mounting Parts			
17	S-150	Capscrew, bearing to cylinder head	7

CYLINDER HEAD

Figure 9

GROUP A—Model: C-160, C-180

	BM-60332	Cylinder head assembly (complete with valves)	1
1	119819	Half-collet, valve	48
2	120089	Spring, valve	24
3	113447	Valve, exhaust	12
4	44748	Valve, intake	12
5	BM-60331	Cylinder head assembly (116931)	1
6	119806	Retainer, valve spring	24
7	105292	Guide, valve spring	24

CYLINDER HEAD (Cont'd)

Figure 9

GROUP A—(Cont'd)

8	70849	Guide, crosshead valve	12
9	105293	Guide, intake and exhaust valve	24
	70843	Insert, exhaust and intake valve	24
	60488	Pin, dowel, rocker shaft	2
	105889	Pin, dowel, intake manifold	3
	69233	Pin, dowel, oil line	1
	S-995	Plug, pipe (3/4")	12
	S-915-A	Plug, pipe	6
	70459	Plug, fuse (1/8")	1
	S-911-B	Plug, pipe (1/8")	3
	67622	Plug, pipe	1
10	108019	Sleeve, injector	6
	103847	Stud, exhaust manifold	6

Mounting Parts

	122936	Capscrew, cylinder head (short)	7
	122937	Capscrew, cylinder head (long)	7
11	44737	Crosshead, valve (left)	6
12	44738	Crosshead, valve (right)	6
	BM-64683	Gasket assembly, cylinder head (120406)	1
	114326	Grommet (pear shaped)	1
	115984	Grommet, cylinder head (stud)	13
	132705	Grommet, water	24
	131168	Retainer, water grommet	24
	115985	Ring, sealing ring, push tube	6
13	S-273	Nut, crosshead adjusting	12
	68445	Pin, dowel, cylinder head to block	2
14	67307	Screw, crosshead adjusting	12
	112729	Retainer, valve crosshead	12
	113995	Washer, plain, cylinder head capscrew	14

GROUP B—Model: C-175

Same as group A except parts as shown below:

	BM-55046	Cylinder head assembly (116930) (complete with valves)	1
	BM-55045	Cylinder head assembly (116930) (less valves)	1

PARTS INDENTED ARE INCLUDED IN THE PART UNDER WHICH THEY ARE INDENTED

Illust. Ref. No.	Cummins Part No.	Part Name	No. Req. Per Eng.	Illust. Ref. No.	Cummins Part No.	Part Name	No. Req. Per Eng.
---------------------	---------------------	-----------	----------------------	---------------------	---------------------	-----------	----------------------

CYLINDER HEAD COVER

Figure 10

GROUP A—Model: C-160

1	132379	Cover, cylinder head	1
	123715	Breather	1
2	101322	Cap, filler	1
3	S-104	Capscrew, cylinder head cover	4
4	128478	Gasket, cylinder head cover	1
5	70415	"O" ring	4
	68863	Tube, breather	1
	103016	Tube, oil filler	1
6	115231	Washer, cupped	4

GROUP B—Model: C-175, C-180

Same as Group A except for parts shown below:

132402	Cover assembly, cylinder head	1
--------	-------------------------------	---

CRANKCASE BREATHER

Figure 11

GROUP A—Model: C-175 C-180

	BM-53533	Breather assembly, crankcase	1
1	105021	Baffle, breather	1
2	122133	Body, breather	1
3	S-167-A	Capscrew, cover to body	3
4	122136	Cover, breather	1
5	111042	Element, breather	1
6	122135	Gasket, cover to body	1
7	S-600	Lockwasher, cover to body	3
8	105019	Screen, breather	2
9	S-631	Washer, cover to body	3

Mounting Parts

	S-181-A	Capscrew, flange to breather	1
	69911-A	Clamp	1
	S-604	Lockwasher, tube to breather	1
	68038	Support	1
	BM-53514	Tube, vent (C-175)	1
	BM-53516	Tube, vent (C-180)	1

GEAR COVERS AND PLATES

Figure 12

GROUP A—Model: C-160, C-175

1	S-104	Capscrew, gear cover to block	1
2	S-120	Capscrew, gear cover to block	3

GEAR COVERS AND PLATES (Cont'd)

GROUP A—(Cont'd)

3	S-103-D	Capscrew, gear cover to block	4
	S-112	Capscrew, gear plate to block	1
4	S-117	Capscrew, gear plate to gear cover	2
5	S-141	Capscrew, gear cover to block	2
5	S-141	Capscrew, gear cover to accessory drive housing	4
4	S-117	Capscrew, gear plate to block	1
6	S-109	Capscrew, gear plate to block	2
	S-119	Capscrew, accessory drive to gear cover	1
7	108121	Cover, gear	1
	69857	Dowel, accessory drive to gear plate	1
	108171	Dowel (master)	1
	108174	Dowel (diamond)	1
8	112933	Gasket, gear plate to block	1
9	112917	Gasket, plate to gear cover	1
	S-604	Lockwasher, gear cover and plate mounting capscrews	24
	S-605	Lockwasher, accessory drive to gear cover	1
10	112850	Plate, gear	1
	S-910-B	Plug, pipe	1
	S-964-E	Plug, pipe	1
	S-908	Plug, pipe	1
11	106276	Seal, accessory drive oil	1
12	70522	Seal, crankshaft oil	1
13	S-622	Washer, plain, gear plate to block	2

GROUP B—Model: C-180

14	S-115	Capscrew, supercharger bearing support	3
15	S-112	Capscrew, gear plate to block	1
	S-119	Capscrew, accessory drive to gear cover	1
16	S-193	Capscrew, supercharger idler gear shaft	1
1	S-104	Capscrew, gear cover to block	1
17	S-197	Capscrew, gear cover to block	1
17	S-197	Capscrew, gear cover to supercharger	3
5	S-141	Capscrew, gear cover to block	6
5	S-141	Capscrew, gear cover to supercharger	4
5	S-141	Capscrew, gear cover to accessory drive housing	4
6	S-109	Capscrew, gear plate to block	2
2	S-120	Capscrew, gear plate to block	2
18	108260	Cover, gear	1
	69857	Dowel, accessory drive to gear plate	1
	60408	Dowel (master)	1
	70653	Dowel (diamond)	1

WHEN ORDERING PARTS ALWAYS GIVE ENGINE SERIAL NUMBER

Illust. Ref. No.	Cummins Part No.	Part Name	No. Req. Per Eng.	Illust. Ref. No.	Cummins Part No.	Part Name	No. Req. Per Eng.
---------------------	---------------------	-----------	----------------------	---------------------	---------------------	-----------	----------------------

GEAR COVERS AND PLATES (Cont'd)

Figure 12

GROUP B—(Cont'd)

8	112933	Gasket, gear plate to block	1
19	112916	Gasket, gear plate to cover	1
20	68579	Gasket, supercharger bearing support	1
21	S-604	Lockwasher, supercharger bearing support	3
	S-605	Lockwasher, accessory drive bearing support	1
	S-604	Lockwasher, gear cover and plate mounting capscrews	21
22	S-608	Lockwasher, supercharger idler gear shaft	1
23	68642	"O" Ring, supercharger idler spindle	1
	70415	"O" Ring, supercharger lubricating tube	2
24	112849	Plate, gear	1
	S-908	Plug, pipe	1
	69901	Plug, pipe	1
	S-911-B	Plug, pipe	1
11	106276	Seal, accessory drive oil	1
12	70522	Seal, crankshaft oil	1
25	BM-20484	Support, supercharger bearing	1
26	68578	Bushing, supercharger idler hub	1
27	68627	Support, supercharger idler spindle	1
	113030	Tube and Clip assembly, supercharger lubricating	1

LUBRICATING OIL PUMP

Figure 13

GROUP A—All Model

	BM-44542	Pump assembly, lubricating	
1	BM-44541	Housing and bushing, assembly (102341) lubricating pump	1
2	68586	Bushing, lubricating pump housing drive shaft	1
3	68585	Dowel, cover to housing	1
4	68595	Dowel, cover to housing	1
5	BM-31887	Cover and bushing assembly, (100138) lubricating pump	1
2	68586	Bushing, lubricating pump cover, drive shaft	1
6	BM-20443	Gear and bushing assembly, impeller (68589) (idler)	1
2	68586	Bushing, lubricating pump driven gear	2

LUBRICATING OIL PUMP (Cont'd)

GROUP A—(Cont'd)

7	BM-20442	Idler gear and bushing assembly, lubricating pump drive (43828-1)	1
8	69510	Bushing, lubricating pump idler gear	1
9	100569	Capscrew, socket head	1
10	S-115	Capscrew, cover to housing	3
11	S-185-A	Capscrew, cover to housing	1
12	69507	Capscrew, socket head, idler gear retainer	3
13	100570	Gasket, cover to housing	1
14	43240	Gear, lubricating pump drive	1
15	68588	Gear, lubricating pump impeller (driven)	1
16	67089	Lockwire	5
17	68908-A	Lockplate, cover to body (21/64")	4
18	100571	Retainer, idler gear	1
19	69509	Shaft, idler gear	1
20	68590	Shaft, lubricating pump drive	1
21	68603	Shaft, idler impeller gear	1
22	69508	Washer, lubricating pump thrust	1

Mounting Parts

23	S-103-D	Capscrew, pump to block	1
24	S-112	Capscrew, pump to block	2
25	69236	Dowel, pump to block	2
26	68908	Lockplate, pump to block capscrew	3

OIL PANS

Figure 14

GROUP A—All Models

1	104988	Pan, oil (oil gauge bracket mounted on fuel pump side) (rear sump)	1
2	102170	Bracket, oil suction bell (R.H.)	1
3	102244	Bracket, oil suction bell (L.H.)	1
4	S-115	Capscrew, suction flange	3
5	S-102	Capscrew, bell bracket to block	2
6	S-107	Capscrew, drain tube flange	2
7	S-110	Capscrew, strap to block	1
	S-117	Capscrew	1
	S-112	Capscrew	1
8	68724	Capscrew, drain tube strap	1
9	S-169-A	Capscrew, pan to block	4
10	S-103-D	Capscrew, pan to block	23
	128487	Clamp, tube	1
	70645	Dowel, pan to block	1

PARTS INDENTED ARE INCLUDED IN THE PART UNDER WHICH THEY ARE INDENTED

Illust. Ref. No.	Cummins Part No.	Part Name	No. Req. Per Eng.	Illust. Ref. No.	Cummins Part No.	Part Name	No. Req. Per Eng.
---------------------	---------------------	-----------	----------------------	---------------------	---------------------	-----------	----------------------

OIL PANS (Cont'd)

GROUP A—(Cont'd)

	68568	Dowel, pan to block	1
11	102140	Gasket, suction flange	1
12	20842	Gasket, oil pan	1
13	S-3050	Gasket, drain plug	2
	67946	Gasket, by-pass valve	1
	68299	Flange, blind	1
	68908	Lockplate	1
	68908-A	Lockplate	2
14	102141	Lockplate, suction screen cover support	1
15	117559	Lockplate, bell bracket to block	2
16	S-604	Lockwasher, pan to block	27
17	109558	Nut, huglock	2
18	S-205-A	Nut, drain tube strap	1
19	S-502	Pin, cotter	1
20	S-915-A	Plug, pipe	1
21	110907	Plug, drain	2
22	S-924	Plug, pipe	2
	S-959	Plug, pipe	1
24	68567-1	Strap, drain tube	1
25	69171-1	Support, suction screen	1
	128486	Support, tube clamp	1
26	BM-44485	Tube assembly, suction (102153)	1
27	BM-57731	Tube assembly, drain to pan	1
28	109557	Washer, plain	4
29	S-631	Washer, plain	2
30	S-699	Washer, pan to block	3
31	S-602	Washer, pan to block	24
	S-679	Washer, plain	1

OIL GAUGE BRACKETS, TUBES AND DIPSTICKS

Figure 15

GROUP A—All Models

1	101240	Bracket, oil gauge	1
2	BM-47951	Dipstick, oil gauge	1
3	BM-51775	Tube, oil gauge	1
Mounting Parts			
4	S-102	Capscrew, bracket to pan	6
5	109459	Gasket, oil gauge bracket	1
6	S-605	Lockwasher, bracket to pan	6
7	S-626	Washer, plain	6

LUB. OIL COOLER

Figure 16

GROUP A—Model: C-160

	BM-53475	Cooler assembly, lubricating oil	1
1	S-103-D	Capscrew, cover to housing	4
2	S-119	Capscrew, cover to housing	2
3	111749	Cover, lubricating oil cooler	1
5	111956	Gasket, front cover to housing	1
	BM-54705	Housing and retainer assembly, lubricating oil cooler	1
4	110848	Element, lubricating oil cooler	1
6	123067	Housing, lubricating oil cooler	1
9	110841	"O" Ring, oil cooler	2
11	110827	Retainer, cooler and "O" Ring	1
10	S-910-B	Plug, pipe	1
7	S-604	Lockwasher, cover to housing	4
8	S-605	Lockwasher, cover to housing	2
	S-626	Washer, plain, cover to housing	2
Mounting Parts			
12	S-123	Capscrew, lubricating oil cooler housing to block	1
13	S-103	Capscrew, lubricating oil cooler housing to block	1
2	S-119	Capscrew, lubricating oil cooler housing to block	3
14	123126	Gasket, lubricating oil cooler to block (rear)	1
15	111955	Gasket, lubricating oil cooler housing to block (front)	1
8	S-605	Lockwasher, lubricating oil cooler housing to block	4
16	S-604	Lockwasher, lubricating oil cooler housing to block	1

GROUP B—Model: C-175

Same as group A except parts shown below:

	BM-48781	Cooler assembly, lubricating oil	1
3	111747	Cover, lubricating oil cooler (front)	1
5	111956	Gasket, lubricating oil cooler cover to housing	1

GROUP C—Model: C-180

Same as group A except parts shown below:

3	111795	Cover, lubricating oil cooler (front)	1
---	--------	---------------------------------------	---

WHEN ORDERING PARTS ALWAYS GIVE ENGINE SERIAL NUMBER

Illust. Ref. No.	Cummins Part No.	Part Name	No. Req. Per Eng.	Illust. Ref. No.	Cummins Part No.	Part Name	No. Req. Per Eng.
---------------------	---------------------	-----------	----------------------	---------------------	---------------------	-----------	----------------------

LUB. OIL FILTER

Figure 17

GROUP A—All Models

	BM-62567	Lubricating oil filter and head assembly	1
1	S-137	Capscrew, filter shell to head	4
	BM-45611	Head assembly	1
2	69354	Cap, spring retainer	1
3	S-3050	Gasket, spring retainer cap	1
4	110728	Head, lubricating oil filter	1
	S-911-B	Plug, pipe	1
6	69356	Plunger, lubricating oil pressure	1
7	69355	Spring, plunger	1
5	S-610	Lockwasher, filter shell to head	1
	BM-60647	Filter assembly, lubricating oil	1
8	69751	Gasket, lubricating oil filter cover	1
9	69901	Plug, drain	1
	BM-60646	Element assembly	1
10	S-1953	Bag, filter	1
11	134729	Separator	1
	BM-60645	Spool assembly	1
12	128805	Ball, by-pass relief	1
13	128800	Clamp, lubricating oil filter	1
14	128801	Gasket, bag	2
15	128802	Nut, locking	2
16	S-503	Pin, cotter	1
17	128803	Retainer, spring	1
	128807	Ring, snap	1
18	128804	Spring, by-pass ball	1
19	128806	Spring, spool	1
20	128799	Spool	1
21	BM-58237	Shell assembly	1

Mounting Parts

22	S-112	Capscrew, head to block	2
23	S-141	Capscrew, head to block	2
24	112795	Gasket, lubricating oil filter head to block	1
25	S-604	Lockwasher, filter head to block	4

NOTES

LUBERFINER FILTER (BY-PASS)

GROUP B—Model: C-175

101679	Filter, bleeder type, by-pass (750-C)	1
101852	Bolt, clamping ring	1
101862	Bracket and band assembly	2
101859	Check valve assembly, outlet	1
101860	Check valve assembly, inlet	1
101849	Cover, lubricating oil filter	1
120877	Element, by-pass filter	1
101854	Housing, lubricating oil filter	1
101853	"O" ring, lubricating oil filter cover	1
101850	Pack assembly, holddown	1
S-971	Petcock	1
101857	Plate, reinforcing	1
101858	Plug, drain	1
108251	Plug, orifice	1
108298	Plug, orifice, optional	1
101851	Ring, clamping	1
101861	Seal, washer	3
101856	Tube and nut assembly	1
118315	Washer, copper, vent plug seal	1

WATER PUMP (BELT DRIVEN)

Figure 18

GROUP A—Model: C-160, C-175

	BM-51280	Water pump assembly	1
1	S-1977	Bearing	1
2	70171	Bearing	1
3	116679	Body, water pump	1
4	S-155	Capscrew, hub to shaft	1
5	S-119	Capscrew, pulley sheave	3
6	S-115	Capscrew, water pump cover	4
7	S-185-A	Capscrew, water pump cover	2
8	101222	Cover, water pump	1
9	S-1004-1	Elbow	1
10	S-1109	Fitting, grease	1
11	44818	Gasket, water pump	1
12	122294	Impeller, water pump	1
13	S-610	Lockwasher	1
14	S-600	Lockwasher, pulley sheave	3
15	S-605	Lockwasher	6
16	S-962-E	Petcock	1
	S-995	Plug, pipe	1
17	70881	Ring, snap	1
19	125662	Seal, water pump	1

PARTS INDENTED ARE INCLUDED IN THE PART UNDER WHICH THEY ARE INDENTED

Illust. Ref. No.	Cummins Part No.	Part Name	No. Req. Per Eng.
---------------------	---------------------	-----------	----------------------

WATER PUMP (Cont'd)

GROUP A—(Cont'd)

21	44796	Shaft, water pump	1
22	120400	Sheave, water pump (fixed)	1
23	116741	Sheave, water pump (adjusting)	1
24	67518	Slinger, water pump	1
25	105287	Spacer, water pump bearing	1
26	70880	Washer, plain	1

Mounting Parts

27	101427	Belt, water pump	1
28	S-140	Capscrew, pump to gear housing	2
29	S-112	Capscrew, water pump inlet connection	2
30	111752	Connection, water pump to oil cooler	1
31	69910	Connection, water pump inlet	1
32	70627	Coupling, water by-pass	1
33	69909	Gasket, water pump inlet connection	1
34	S-604	Lockwasher, water pump inlet	2
35	S-610	Lockwasher, pump to gear housing	2
36	70624	"O" ring	4

WATER PUMP (SUPERCHARGER DRIVEN)

Figure 19

GROUP A—Model: C-180

	BM-37859	Water pump assembly	1
1	101953	Body, water pump	1
2	S-115	Capscrew, cover	3
3	S-103	Capscrew, cover	1
4	106337	Cover, water pump	1
5	107782	Flange, coupling	1
6	102323	Gasket, water pump to body	1
7	105413	Impeller, water pump	1
8	S-605	Lockwasher, cover capscrew	4
9	S-962-E	Petcock, drain	1
10	107777	Ring, snap	1
11	107780	Ring, snap	1
12	105176	Seal, water pump	1
	107317	Seat, water pump seal	1
	107318	Seal assembly, water pump seal	1
	BM-37802	Shaft, bearing and flinger assembly	1
13	107776	Flinger, water pump	1
14	107779	Shaft and bearing assembly	1
15	107781	Washer, rubber	1
Mounting Parts			
16	S-122	Capscrew, pump inlet connection	2
17	S-115	Capscrew, water pump to supercharger	4

Illust. Ref. No.	Cummins Part No.	Part Name	No. Req. Per Eng.
---------------------	---------------------	-----------	----------------------

WATER PUMP (Cont'd)

GROUP A—(Cont'd)

18	S-188-C	Capscrew, lug to pump	1
19	69910	Connection, water pump inlet	1
20	111753	Connection, oil cooler	1
21	70627	Coupling, water by-pass	1
22	68687	Gasket, water pump to supercharger	1
23	69909	Gasket, water pump inlet connection	1
	118844	Keeper, water connection	1
24	S-604	Lockwasher, water pump to supercharger	4
25	S-604	Lockwasher, water pump inlet connection capscrew	2
26	S-600	Lockwasher, lug to pump	1
27	70624	"O" ring, water by-pass coupling	2
28	43463-A	"O" ring, oil cooler connection	2
29	S-626	Washer, water pump to supercharger	4

THERMOSTAT HOUSINGS AND WATER CONNECTIONS

Figure 20

GROUP A—Model: C-160, C-175

	S-921-D	Bushing	1
1	108707	Capscrew, water outlet connection to housing	2
2	S-105	Capscrew, thermostat housing	4
3	S-112	Capscrew, cylinder head water outlet connection	2
4	42354-B	Connection, water outlet	1
5	116673	Connection, cylinder head water outlet	1
	116684	Elbow, restrictive	1
7	116681	Gasket, thermostat housing	1
8	9221	Gasket, water outlet connection	1
9	BM-49919	Housing assembly, thermostat (116666)	1
10	111325	Seal, thermostat	1
11	S-604	Lockwasher, thermostat housing	4
11	S-604	Lockwasher, water outlet connection	4
	BM-49918	Plate and insert assembly	1
12	118374	Plate, connection to head	1
13	118375	Insert, connection to head	1
14	S-908	Plug, pipe	1
15	S-915-A	Plug, pipe	4
16	S-962	Plug, pipe	2
17	67622	Plug, pipe	2
18	130547	Thermostat	1
	BM-47092	Tube assembly, water pump body to thermostat housing	1

WHEN ORDERING PARTS ALWAYS GIVE ENGINE SERIAL NUMBER

**C-160
C-175
C-180**

DIESEL

ENGINES

Illust. Ref. No.	Cummins Part No.	Part Name	No. Req. Per Eng.	Illust. Ref. No.	Cummins Part No.	Part Name	No. Req. Per Eng.
THERMOSTAT HOUSINGS AND WATER CONNECTIONS				FAN BRACKET AND HUB (Cont'd)			

Figure 20

GROUP B—Model: C-180

Same as Group A except parts shown below:

S-163	Capscrew, by-pass connection to housing	2
102303	Connection, water by-pass	1
116675	Connection, cylinder head water outlet	1
116682	Gasket, thermostat housing	1
106288	Gasket, water by-pass connection	1
BM-45575	Housing assembly, thermostat (116671)	1
S-915-A	Plug, pipe	2
S-962	Plug, pipe	1
S-995	Plug, pipe	1
S-925	Plug, pipe	1
S-989-A	Plug, pipe	1
106263	Spacer	1
Group A Parts Not Required		
S-921-D	Bushing, pipe	1

ACCESSORY DRIVE PULLEY

GROUP A—Model: C-160 C-175

BM-51278	Accessory drive pulley and sleeve assembly (120313)	1
70755	Sleeve, accessory drive pulley	1
127704	Capscrew, accessory drive pulley	1
127705	Washer, accessory drive pulley	1
S-608	Washer, accessory drive pulley	1

GROUP B—Model: C-180

Same as Group A except parts shown below:

16	BM-58094	Accessory drive pulley and sleeve assembly (124365)	1
----	----------	---	---

FAN BRACKET AND HUB

Figure 21

GROUP A—Model: C-160

	BM-57736	Fan hub assembly	1
1	120157	Bearing, pulley	1
2	115512	Bearing, roller	1
3	110251	Bracket, fan	1
4	S-137	Capscrew, spacer	4

GROUP A—(Cont'd)

5	S-604	Lockwasher, spacer capscrew	4
6	105305	Nut, slotted hexagon	1
7	70910	Nut, fan hub shaft	1
8	120331	Pulley, fan	1
9	102019	Ring, snap, bearing retainer	1
10	66912-1D	Screw, fan, adjusting	1
11	105307	Shaft, fan hub	1
12	119711	Spacer, fan pilot	1
13	105306	Spacer, bearing	1
14	102010	Washer, plain	1
15	102027	Washer, cone clamp	1
Mounting Parts			
	124421	Belt, fan drive	2
16	102020	Capscrew, bracket to block	2
17	106069	Capscrew, bracket to block	2
18	S-610	Lockwasher, bracket to block	4

GROUP B—Model: C-175

Same as Group A except parts shown below:

	BM-62964	Fan hub assembly	1
12	119711	Spacer, fan pilot	1

GROUP C—Model: C-180

Same as Group A except parts shown below:

	BM-58096	Fan hub assembly	1
	124366	Pulley, fan	1

SUPERCHARGER IDLER GEAR AND HUB

Figure 22

GROUP A—Model: C-180

	BM-27681	Idler gear and hub assembly	1
	BM-25558	Supercharger idler gear assembly	1
1	68629-1	Bushing, supercharger idler gear	2
2	43253-1	Gear, supercharger idler (driven)	1
	BM-25559	Idler gear spring retainer assembly	1
3	68635-1	Plate, idler gear spring retainer	2
4	43244-1	Retainer, idler gear spring	1

PARTS INDENTED ARE INCLUDED IN THE PART UNDER WHICH THEY ARE INDENTED

Illust. Ref. No.	Cummins Part No.	Part Name	No. Req. Per Eng.	Illust. Ref. No.	Cummins Part No.	Part Name	No. Req. Per Eng.
---------------------	---------------------	-----------	----------------------	---------------------	---------------------	-----------	----------------------

SUPERCHARGER IDLER GEAR AND HUB (Cont'd)

Figure 22

GROUP A—(Cont'd)

5	S-3198	Rivet, countersunk head	8
	BM-20488	Hub assembly, supercharger idler drive	1
6	68578	Bushing, supercharger idler drive hub	2
7	43243	Hub, supercharger idler drive	1
8	68633-1	Bearing, supercharger thrust (rear)	1
9	68631	Bearing, supercharger hub thrust (front)	1
10	68632	Bearing, supercharger thrust	1
11	68991	Capscrew, flathead socket	6
12	43248	Cover, idler gear spring retaining	1
13	43273	Gear, supercharger idler drive	1
14	69861	Pin, supercharger drive spring retaining	4
15	68637-1	Spring, supercharger idler leaf	20

PT Fuel System

Each Cummins PT Fuel Pump is calibrated to obtain the best performance and fuel economy for your engine. Your Cummins Distributor or Dealer has the special tools required for complete rebuild and calibration. Caution: do not disturb the fuel regulator settings or the throttle screw settings, as serious damage to your engine may result.

Only PT Fuel System parts which can be replaced without pump calibration are listed here. Your Cummins Distributor will record the specific part number of your complete PT Fuel Pump in the back of this book.

FUEL SUPPLY GEAR PUMP

GROUP A—All Models

BM-55830	Gear pump	1
70689	Gasket, pump to housing	1

SHUTDOWN VALVE

GROUP A—All Models:

BM-36328	Valve assembly, electric (12 volt)	1
107890	Valve, electric	1

FUEL TUBING

GROUP A—All Models:

117179	Manifold, drain	1
BM-62740	Manifold, supply	1
BM-58259	Tube, shut-off valve to supply (compressor type)	1
BM-37400	Tube, shut-off valve to supply (less compressor type)	1

Mounting Parts

70795	Clip, tube manifold and supply	4
-------	--------------------------------	---

FUEL INLET AND DRAIN CONNECTIONS

GROUP A—All Models

BM-31308	Fuel inlet connection assembly	6
BM-31309	Fuel drain connection assembly	6
9426-2	Gasket, fuel connection (copper)	12
70854	Gasket, fuel inlet and drain (rubber)	12
70847	Retainer, gasket fuel connection	12
70856	Spring, fuel inlet & drain connection	12

INJECTORS

GROUP A—Model: C-16 O C-17 5

BM-54733	Injector assembly	6
BM-54732	Cup, injector (125145)	6
62410	Gasket, injector cup	6

GROUP B—Model: C-18 O

BM-66088	Injector assembly	6
BM-66087	Cup, injector (137093)	6
62410	Gasket, injector cup	6

FUEL FILTER

GROUP A—All Models

BM-59497	Filter assembly, fuel	1
126517	Element	1
BM-59481	Fuel filter, head assembly	1
121477	Head	1
126516	Bolt	1
127506	"O" Ring	1

Mounting Parts

110280	Bracket, fuel filter	1
129859	Connector	1

WHEN ORDERING PARTS ALWAYS GIVE ENGINE SERIAL NUMBER

Illust. Ref. No.	Cummins Part No.	Part Name	No. Req. Per Eng.	Illust. Ref. No.	Cummins Part No.	Part Name	No. Req. Per Eng.
---------------------	---------------------	-----------	----------------------	---------------------	---------------------	-----------	----------------------

AIR INTAKE MANIFOLD AND CONNECTIONS

Figure 23

GROUP A—Model: C-160

9	130569	Manifold, air intake	1
2	125880	Adapter, preheater nozzle	1
	67946	Gasket, preheater nozzle	1
4	68812	Glow plug	1
	118273	Gasket, preheater glow plug	1
5	68178-1	Lockplate	1
6	69215	Nozzle, preheater	1
7	68061-A	"O" ring	1
8	43468	Pin, groove	1
	S-903	Plug, pipe	1
	S-901	Plug, pipe	2

Mounting Parts

	69621	Capscrew, manifold to head	3
	S-103-D	Capscrew, air intake elbow	4
	S-103-D	Capscrew, manifold to head	3
10	20248-A	Elbow, air intake	1
	68139	Elbow	1
	70851	Gasket, air manifold to head	3
	102131	Gasket, elbow	1
	S-604	Lockwasher, air manifold to head	3
	S-602	Washer, plain, air manifold to head	3
	S-679	Washer, copper	3

GROUP B—Model: C-175

Same as Group A except parts shown below:

	120307	Manifold, air intake	1
		Mounting Parts	
	43828-F	Clamp, hose	4
22	103789	Connection, turbocharger air outlet	1
16	104296	Hose, turbocharger air outlet connection	2

GROUP C—Model: C-180

Same as Group A except parts shown below:

9	120217	Manifold, air intake	1
2	104218	Adapter, preheater nozzle	1
	S-911-B	Plug, pipe	2
		Mounting Parts	
	111748	Bracket, connection support	1
	S-199-B	Capscrew, manifold to head	3
	S-109	Capscrew, bracket to connection	2
	108707	Capscrew, intake manifold connection	4
11	43828-G	Clamp, hose	1

AIR INTAKE MANIFOLD AND CONNECTIONS (Cont'd)

GROUP C—(Cont'd)

13	106407	Connection, intake manifold	1
14	106408	Crossover, intake manifold	1
15	105947	Elbow, intake manifold	1
	106445	Gasket, crossover	1
16	104296	Hose, intake manifold	1
	S-604	Lockwasher, manifold to head	1
	S-602	Washer, plain	12
	63322	Washer, plain	2

EXHAUST MANIFOLDS

Figure 24

GROUP A—Model: C-160

1	5866	Manifold, exhaust (front)	1
2	131877	Manifold, exhaust (center)	1
3	5868	Manifold, exhaust (rear)	1
		Mounting Parts	
8	103849	Clamp, exhaust manifold	3
9	103848	Gasket, exhaust manifold	3
6	S-217-A	Nut, manifold stud	6
7	63252	Sleeve, exhaust manifold	2

GROUP B—Model: C-175

12	109427	Manifold, exhaust (front)	1
13	110524	Manifold, exhaust (center)	1
14	109428	Manifold, exhaust (rear)	1

Mounting Parts

	S-103-D	Capscrew, exhaust manifold	12
15	112300	Gasket, exhaust manifold *	6
	109003	Lockplate, exhaust manifold	12
	108976	Washer, plain	12

GROUP C—Model: C-180

10	20872-1	Manifold, exhaust (front)	1
11	20873-1	Manifold, exhaust (rear)	1
		Mounting Parts	
8	103849	Clamp, exhaust manifold	3
9	103848	Gasket, exhaust manifold	3
6	S-217-A	Nut, manifold stud	6

PARTS INDENTED ARE INCLUDED IN THE PART UNDER WHICH THEY ARE INDENTED

Illust. Ref. No.	Cummins Part No.	Part Name	No. Req. Per Eng.	Illust. Ref. No.	Cummins Part No.	Part Name	No. Req. Per Eng.
---------------------	---------------------	-----------	----------------------	---------------------	---------------------	-----------	----------------------

WATER FILTER**GROUP A—All Models**

132716	Filter assembly, water	1
132717	Body, water filter	1
132718	Cover, water filter	1
70223	Capscrew, cover to body	2
135970	Decal	1
132732	Element, water filter	1
132730	Gasket, cover to body	1
68675	Plug, pipe	1
132719	Plate, water filter	2
132731	Spring	1
70233	Washer	2

Mounting Parts

121646	Bracket, water filter	1
S-983	Bushing	1
S-145	Capscrew	2
S-168-A	Capscrew	2
68717	Connection, drain hose	1
107460	Clamp, hose	1
43828	Clamp, hose	1
134325	Elbow, drain connection	1
63058	Hose	1
102314	Hose	1
S-600	Lockwasher	2
66945-A	Spacer, throttle lever	2
S-933-E	Tee	1
70463	Valve assembly, water filter	2
S-608	Washer	2
S-631	Washer	2

**FLYWHEELS, RING GEARS
AND FLYWHEEL HOUSINGS**

Flywheels, flywheel housings and ring gears have been designed to adapt the Cummins Diesel to hundreds of different installations. For this reason, these assemblies are not listed.

Your Cummins Distributor will record flywheel, flywheel housing and ring gear part numbers in the back of this book.

**AIR CLEANERS
AND CONNECTIONS****GROUP A—Model: C-160**

106835	Cleaner, air, 10-1/2" diameter	1
107125	Cover, shell	1
106838	Element assembly	1
107126	Gasket, element	1
107127	Gasket, flange	1
107128	Shell assembly	1
122121	Spring, shell cover clamp	3

Mounting Parts

107105	Adapter, air cleaner	1
S-115	Capscrew, adapter to cleaner	6
125740	Clamp, hose	4
103807	Hose, hump, 3-1/2" diameter	2
S-605	Lockwasher, adapter capscrew	6
107091	Strap, air cleaner	2
S-626	Washer, plain	6

GROUP B—Model: C-17 5

106833	Cleaner, air, 10½" diameter	1
107135	Cover, shell	1
106837	Element assembly	1
107136	Gasket, element	1
107137	Gasket, flange	1
107128	Shell assembly	1
122121	Spring, shell cover clamp	3

Mounting Parts

114616	Adapter, air cleaner	1
S-115	Capscrew, adapter to cleaner	6
125740	Clamp, hose	4
43828-J	Clamp, hose (industrial)	4
103807	Hose, hump (automotive)	2
103808	Hose, hump (industrial, automotive)	2
S-605	Lockwasher, adapter to cleaner	6
S-626	Washer, plain	6
105916	Strap, air cleaner	2

GROUP C—Model: C-180

Same as Group A except parts shown below:

106124	Adapter, air cleaner	1
125739	Clamp, hose	4
103806	Hose, hump (automotive)	2

WHEN ORDERING PARTS ALWAYS GIVE ENGINE SERIAL NUMBER

Illust. Ref. No.	Cummins Part No.	Part Name	No. Req. Per Eng.	Illust. Ref. No.	Cummins Part No.	Part Name	No. Req. Per Eng.
---------------------	---------------------	-----------	----------------------	---------------------	---------------------	-----------	----------------------

TURBOCHARGER

T-506 Oil COOLED

Figure 25

GROUP A—Model: C-175

	BM-62705	Turbocharger assembly, top mounted (130675)	1
1	134322	Bearing, thrust	2
2	105737	Capscrew, exhaust casing	6
3	S-115	Capscrew, front plate to main casing	3
4	105729	Capscrew, main casing to turbine casing	8
5	116436	Capscrew, nozzle ring to housing	4
6	S-168-C	Capscrew, spacer	3
7	BM-62420	Casing and bearing assembly main (130528)	1
8	S-995	Plug, main casing	2
9	130004	Casing, exhaust	1
10	121835	Casing, turbine	1
11	116269	Locknut, nozzle ring capscrew	4
12	S-605	Lockwasher, main casing to turbine casing	8
13	S-605	Lockwasher, front plate to main casing	8
14	S-600	Lockwasher, spacer	3
15	105736	Lockplate, exhaust casing	3
	116434	Lockwire	4
	129515	Orifice, oil restrictor	2
16	105739	"O" ring, oil seal plate	1
17	130539	Plate, diffuser	1
18	130527	Plate, front	1
19	122657	Plate, oil seal	1
	118349	Plug	1
	118350	"O" ring, plug	1
20	123043	Ring, nozzle	1
	BM-62704	Rotor and shaft assembly	1
26	115156	Seal, ring (piston ring type)	2
27	121798	Shield, inner	1
28	106057	Shield, outer	1
	106245	Shim, turbo. exhaust casing	1
29	106246	Shim, turbo. exhaust casing	1
	106247	Shim, turbo. exhaust casing	1
30	134374	Spacer, thrust washer	1
31	S-626	Washer, front plate to main casing	8
32	S-626	Washer, main casing to exhaust casing	8

TURBOCHARGER (Cont'd)

GROUP A—(Cont'd)

Mounting Parts		
43764	Adapter, oil drain	1
S-982	Bushing, oil drain	1
105752	Capscrew, exhaust flange	6
102810	Capscrew, turbocharger to manifold	6
107460	Clamp, hose	2
68425	Clamp, oil supply hose	1
103789	Connection, turbocharger air outlet	1
111365	Elbow	1
115709	Elbow, exhaust connection	1
S-922	Elbow, oil drain	1
118347	Elbow, oil supply	1
118350	"O" Ring, adapter	1
S-1040-A	Elbow, oil supply	1
113242	Flange, exhaust connection	1
106373	Gasket, exhaust connection	1
114201	Gasket, turbocharger exhaust inlet	1
104296	Hose, turbocharger to intake manifold	1
BM-44987	Hose assembly, oil drain	1
BM-49752	Hose assembly, oil supply	1
107440	Locknut	
105751	Lockplate, exhaust connection	1
S-912-B	Nipple, oil drain	1
105750	Ring, exhaust flange	2
113210	Shield, heat	1

**SUPERCHARGER
(Gear Driven)**

Figure 26

GROUP A—Model: C-180

	108573	Supercharger assembly	1
	11145-29	Bearing cage assembly	4
1	11145-31	Bearing	4
2	11145-30	Cage, bearing	4
	11145-44	Capscrew, bearing cage	8
	10366-33	Capscrew, end plate (gear)	12
	11145-45	Capscrew, end plate pump	12
3	107782	Coupling (half)	1
4	11145-32	Cover	1
5	11145-41	Gasket, supercharger cover	1
6	43274	Gear, drive	1

PARTS INDENTED ARE INCLUDED IN THE PART UNDER WHICH THEY ARE INDENTED

Illust. Ref. No.	Cummins Part No.	Part Name	No. Req. Per Eng.	Illust. Ref. No.	Cummins Part No.	Part Name	No. Req. Per Eng.
---------------------	---------------------	-----------	----------------------	---------------------	---------------------	-----------	----------------------

SUPERCHARGER (Cont'd)

Figure 26

GROUP A—(Cont'd)

7	BM-65690	Gear, supercharger timing	1
8	11145-1	Housing assembly	1
9	11145-39	Journal, outboard bearing	1
	S-605	Lockwasher	24
10	10366-13	Lockwasher, gear locknut	2
	11145-46	Lockwire	As Req'd.
	10366-54	Plate, name	1
	11145-17	Plate, gear end assembly	1
11	11145-20	Dowel	2
12	11145-18	Plate, end	1
13	11145-19	Ring, oil collector	2
	11145-21	Plate, pump end assembly	1
14	11145-20	Dowel	4
15	11145-22	Plate, end	1
16	11145-19	Ring, oil collector	2
	S-924	Plug, pipe	1
17	11145-24	Rotors, matched assembly	1
18	11145-52	Shim, bearing cage (.002")	As Req'd.
19	11145-51	Shim, bearing cage (.003")	As Req'd.
20	11145-50	Shim, bearing cage (.010")	As Req'd.
	10366-55	Screw, drive	2
21	124299	Seal ring, bearing cage	4
	68516	Seal ring, oil drain	2
	108172	Seal ring, oil pressure	2
22	11145-36	Seal ring, shaft	8
	11145-53	Shaft nut assembly	2
23	11145-54	Nut, shaft	2
24	S-714	Plug, expansion	2
25	11145-37	Washer, thrust	2
Mounting Parts			
	S-103-D	Capscrew, inlet connection	4
	S-197	Capscrew, gear case cover to supercharger	3
	20881	Connection, supercharger inlet	1
	43828-G	Clamp, hose	1
	68663-2	Clamp, supercharger connection	1
	67857	Dowel, supercharger to gear housing	1
	108174	Dowel, supercharger to gear housing	1
	68713	Gasket, supercharger inlet connection	1
	108166	Gasket, supercharger to gear housing	1
	S-604	Lockwasher, inlet connection	4
	S-604	Lockwasher, gear case cover to supercharger	3
	68667-1	"O" ring, supercharger connection	1
	S-924	Plug, pipe	1

ELECTRICAL EQUIPMENT

Electrical equipment is not manufactured by the Cummins Engine Company, Inc. Complete service for electrical equipment may be obtained from the manufacturers, The Delco-Remy Company at Anderson, Indiana, or the Leece-Neville Company at Cleveland, Ohio, or from their service stations. Address of nearest service station may be obtained from the manufacturer.

GROUP A—All Models

42568	Fan, generator	1
43813	Generator, D.C. (12 Volt)	1
115007	Light Assembly, indicator	1
S-606	Lockwasher, generator fan	4
S-610	Lockwasher, generator to bracket	2
43812	Motor, starting (12 Volt)	1
S-217	Nut, generator to bracket	2
101077	Pulley, generator	1
42796	Regulator, voltage (12 Volt)	1
68813	Resistor, preheater (12 Volt)	1
S-1319	Screw, generator fan	1
102846	Switch, key	1
104215	Switch, toggle (automatic)	1
118847	Switch, magnetic	1

Mounting Parts

70885	Belt, generator drive	1
120246	Bracket, generator	1
103009	Capscrew, generator bracket	3
S-112	Capscrew	3
S-109	Capscrew	1
S-112	Capscrew, generator	3
S-103-D	Capscrew, bracket to adjusting strap	1
S-103-A	Capscrew, starting motor	3
120308	Lever, generator belt adjusting	1
S-604	Lockwasher, generator swivel	3
S-604	Lockwasher, adjusting screw	1
S-608	Lockwasher, adjusting lever screw	1
S-603	Lockwasher, starting motor	3
S-610	Lockwasher	3
S-602	Lockwasher	1

NOTES

WHEN ORDERING PARTS ALWAYS GIVE ENGINE SERIAL NUMBER

Illust. Ref. No.	Cummins Part No.	Part Name	No. Req. Per Eng.	Illust. Ref. No.	Cummins Part No.	Part Name	No. Req. Per Eng.
---------------------	---------------------	-----------	----------------------	---------------------	---------------------	-----------	----------------------

AIR COMPRESSOR

Figure 27

GROUP A—All Models

	BM-66035	Compressor assembly, air	1
1	S-104	Capscrew, cylinder head to compressor body	2
2	S-102-D	Capscrew, cylinder head to compressor body	4
3	S-103-D	Capscrew, bearing support to crankcase	6
	107947	Cock, drain	1
4	S-193	Capscrew, counterweight	1
5	125349	Counterweight, crankshaft	1
6	130258	Coupling, retainer plate	1
7	116417	Crankcase, compressor	1
	BM-66020	Drive assembly, compressor	1
8	130080	Bearing, thrust .088/.090	Use
	130081	Bearing, thrust .090/.092	As
	130083	Bearing, thrust .092/.094	Req'd
9	117894	Bearing, roller	1
10	131970	Crankshaft, compressor	1
11	44783	Gear, drive	1
12	S-301	Key, crankshaft	2
13	130399	Sleeve, thrust bearing retainer	1
	120031	Spacer, compressor	1
14	BM-56617	Support assembly, bearing (120018)	1
15	116620	Bushing	2
16	117077	Gasket, bearing support to crankcase	1
17	129059	Gasket, cylinder head to crankcase	1
	BM-57496	Head assembly, cylinder, compressor	1
18	127896	Body, unloading valve	1
19	S-115	Capscrew, unloader body to head	2
20	127807	Head, cylinder, compressor	1
21	128085	"O" ring, exhaust valve seat	1
22	128086	"O" ring, exhaust valve seat	1
23	128087	"O" ring, unloader valve body	1
24	127892	Plunger, unloader	1
	S-995	Plug, pipe	1
25	128068	Seat, exhaust valve	1
53	127895	Seat, intake valve	1
26	127893	Seat, spring, unloader valve	1
27	127936	Seal, "V" packing	1
28	123658	Spring, plunger	1
29	128080	Spring, exhaust valve	1
30	130164	Spring, intake valve	1
31	127940	Valve, exhaust	1
32	127941	Valve, intake	1
33	S-605	Washer, unloader body to head	2

AIR COMPRESSOR (Cont'd)

GROUP A—(Cont'd)

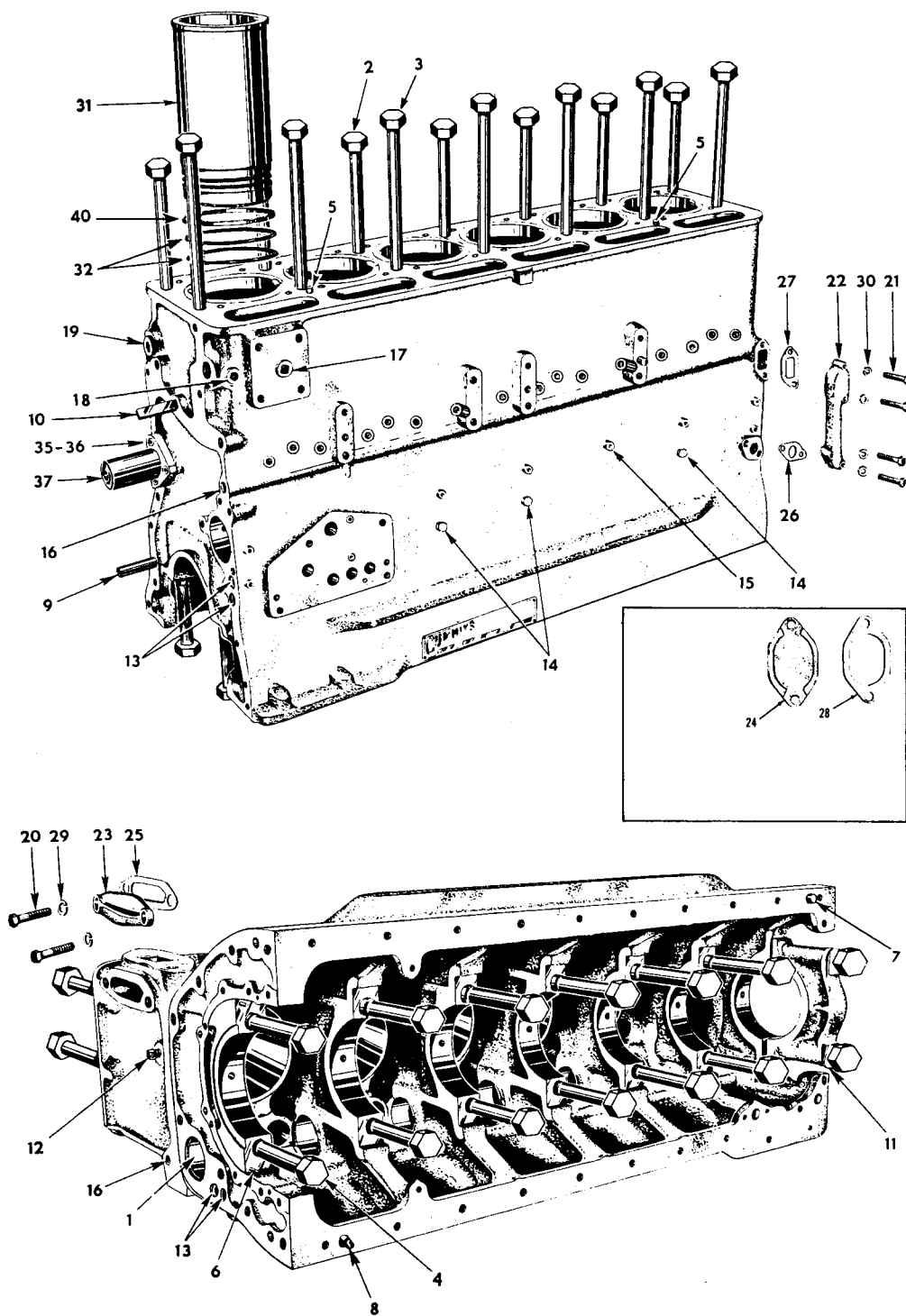
34	131969	Key, counterweight	1
35	117370	Lockplate	1
36	S-604	Lockwasher	6
	S-608	Plug, pipe	2
	BM-62550	Piston assembly, compressor	1
37	119810	Pin, piston	1
38	132780	Piston, compressor	1
39	119859	Ring, snap, piston pin	2
	BM-62480	Ring set, piston, compressor	1
40	130800	Ring, compression	2
41	130810	Ring, oil (consists of ring and expander)	1
42	BM-56606	Rod assembly, connecting, compressor (119776)	1
43	116930	Bushing, crankshaft	1
44	119800	Bushing, piston pin	1
45	117267	Washer, counterweight	1

Mounting Parts

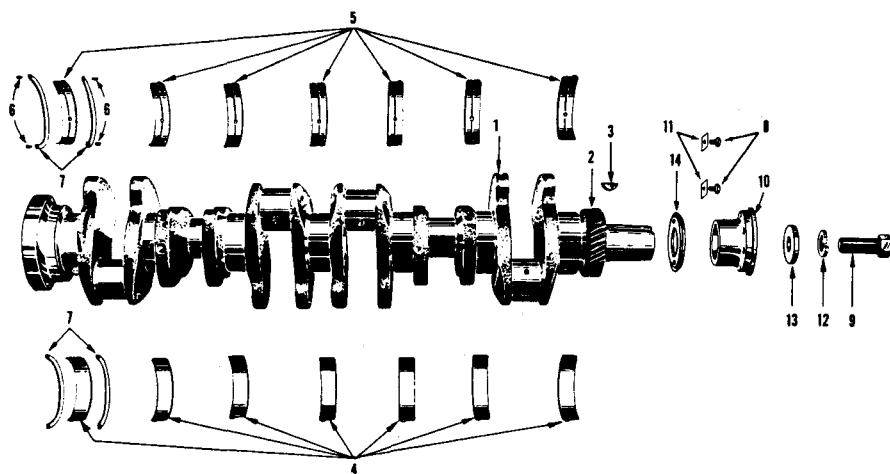
	S-1092	Body, flexible fitting	1
	S-1002-A	Body, adapter	1
46	S-101-A	Capscrew, compressor to block	5
47	S-102	Capscrew, air inlet connection	2
48	127929	Connection, air inlet	1
	S-921	Elbow	1
	S-1005-A	Elbow, water drain	1
49	108176	Gasket, accessory drive housing	1
50	127950	Gasket, air inlet connection	1
	68139	Hose	1
51	S-605	Lockwasher	4
52	S-610	Lockwasher, compressor to drive	5
	BM-57461	Tube assembly, water outlet	1
	BM-57462	Tube assembly, water inlet	1
	BM-63164	Tube assembly, air inlet (C-160 only)	1
	BM-23750	Hose assembly, oil supply	1
	BM-66132	Hose assembly, oil drain	1

NOTES

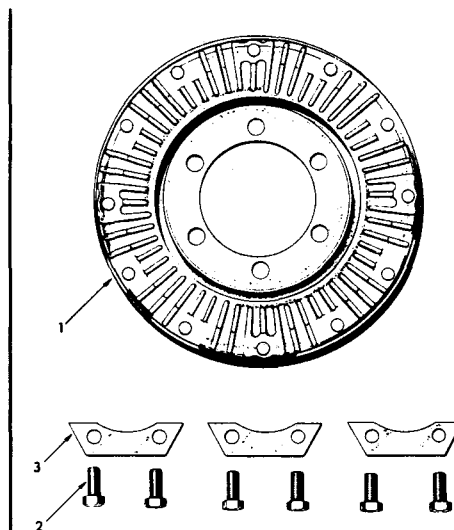
PARTS INDENTED ARE INCLUDED IN THE PART UNDER WHICH THEY ARE INDENTED



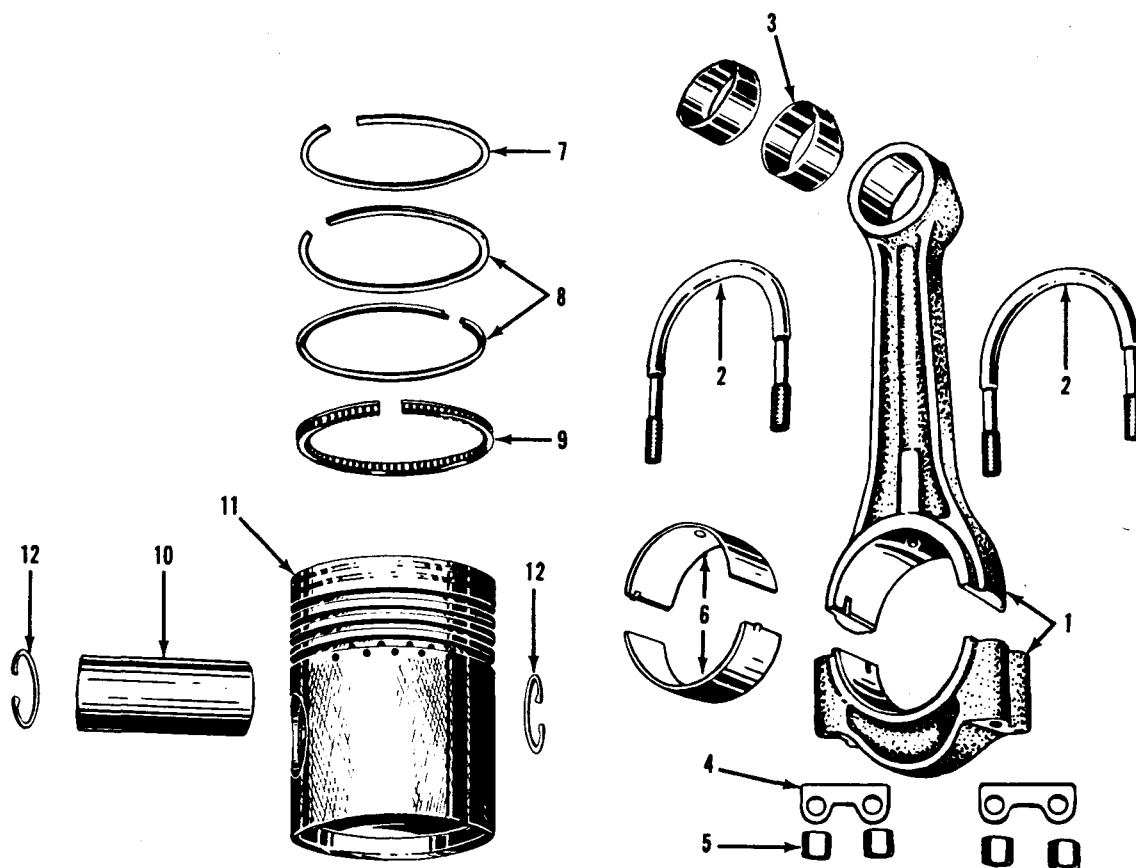
CYLINDER BLOCK
Figure 1



CRANKSHAFT
Figure 2

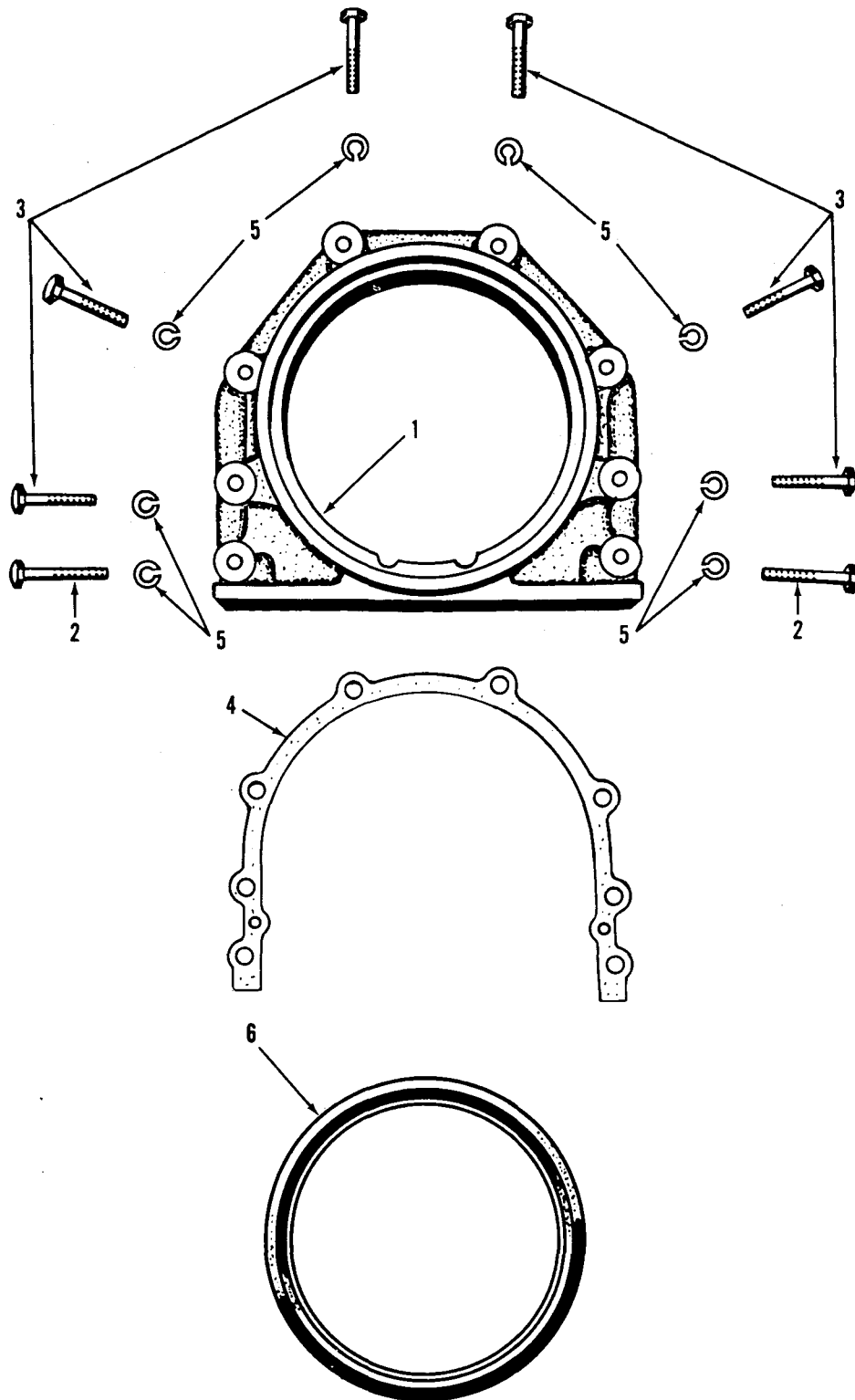


VIBRATION DAMPER
Figure 3

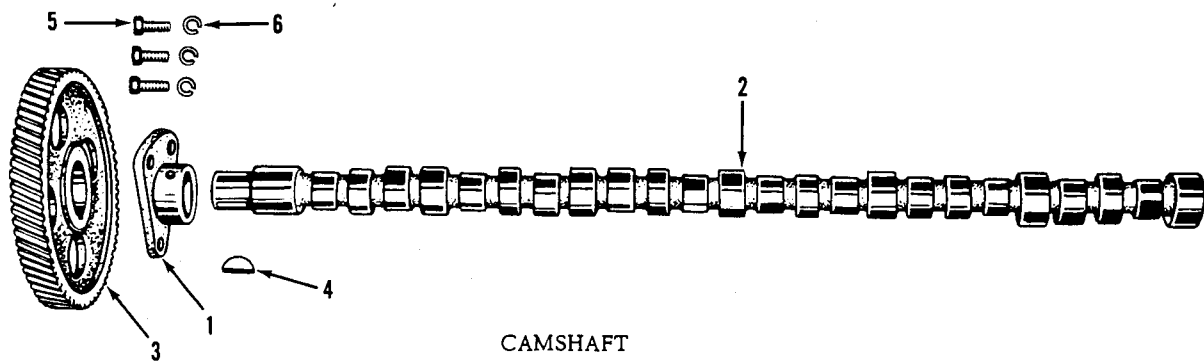


PISTON and CONNECTING RODS

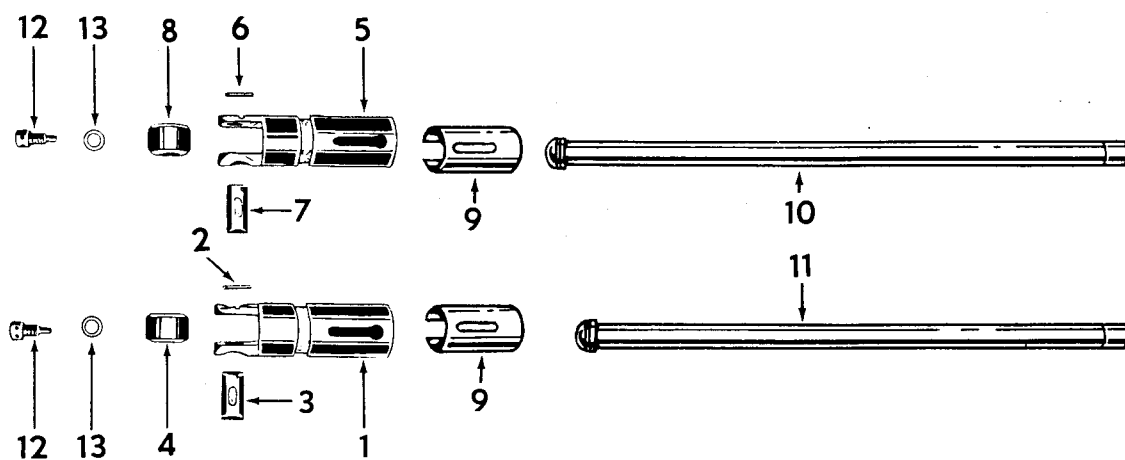
Figure 4



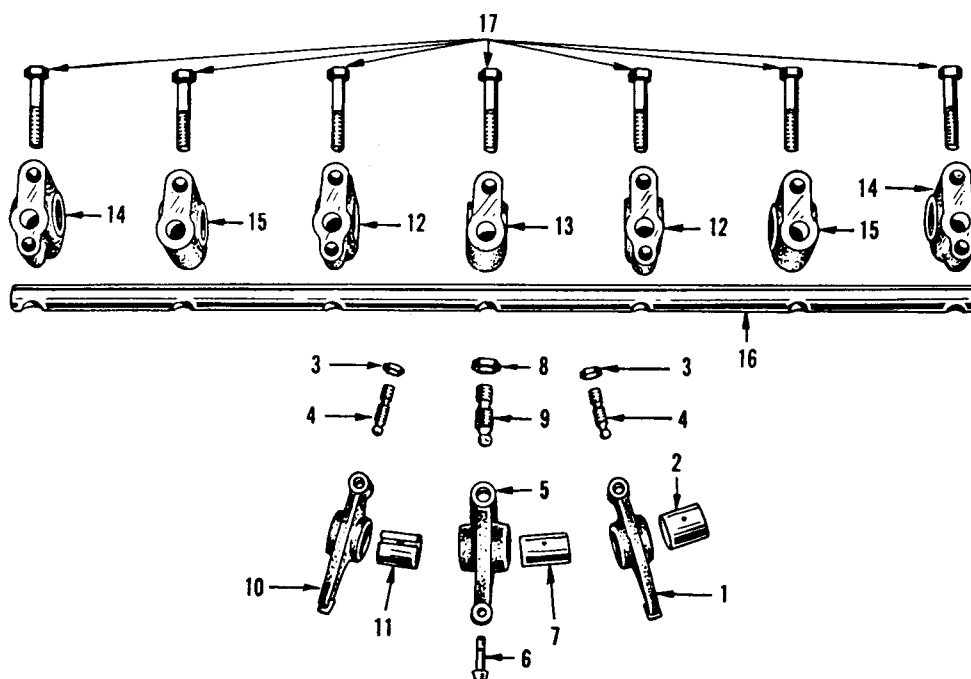
REAR COVER
Figure 5



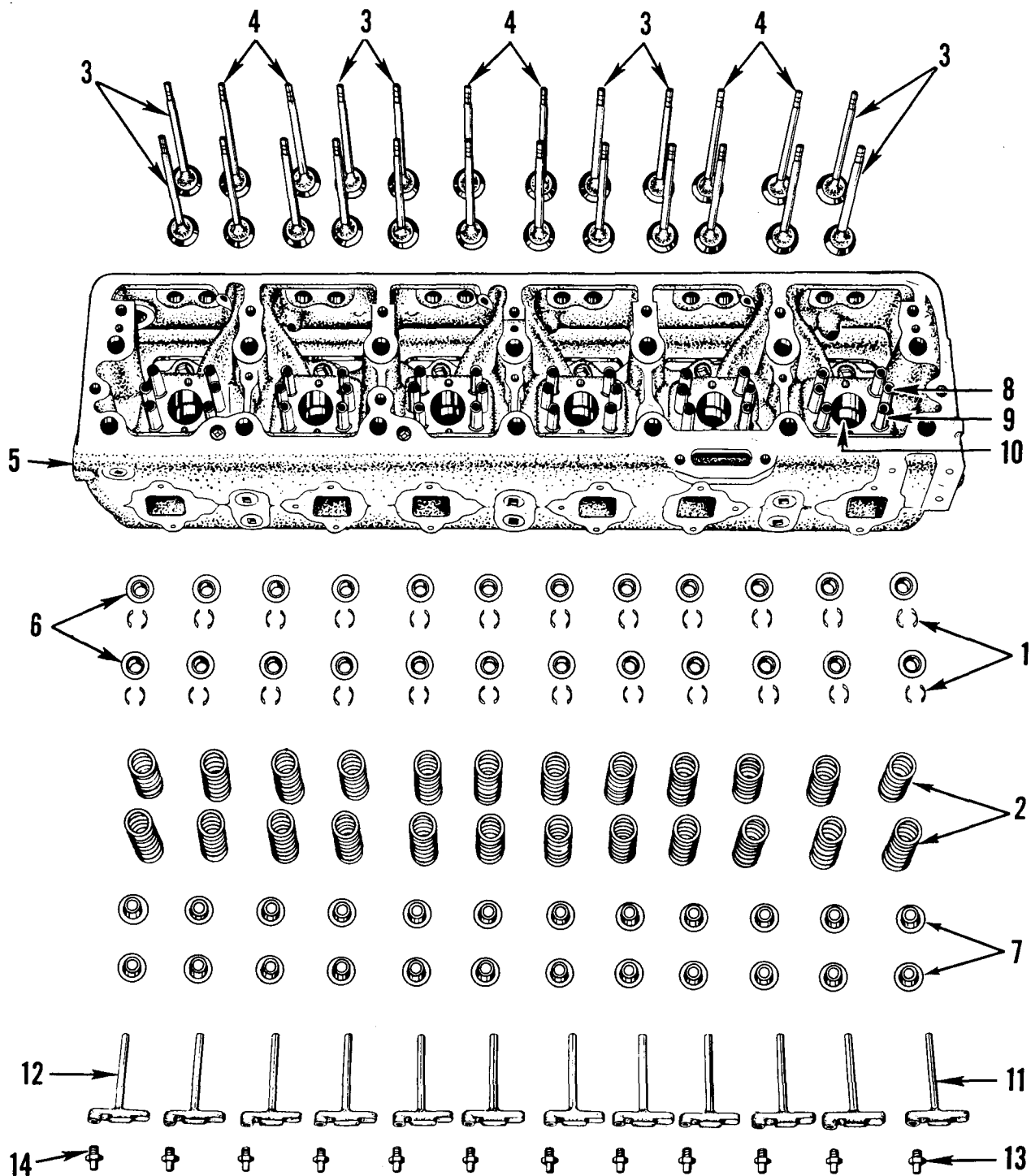
CAMSHAFT
Figure 6



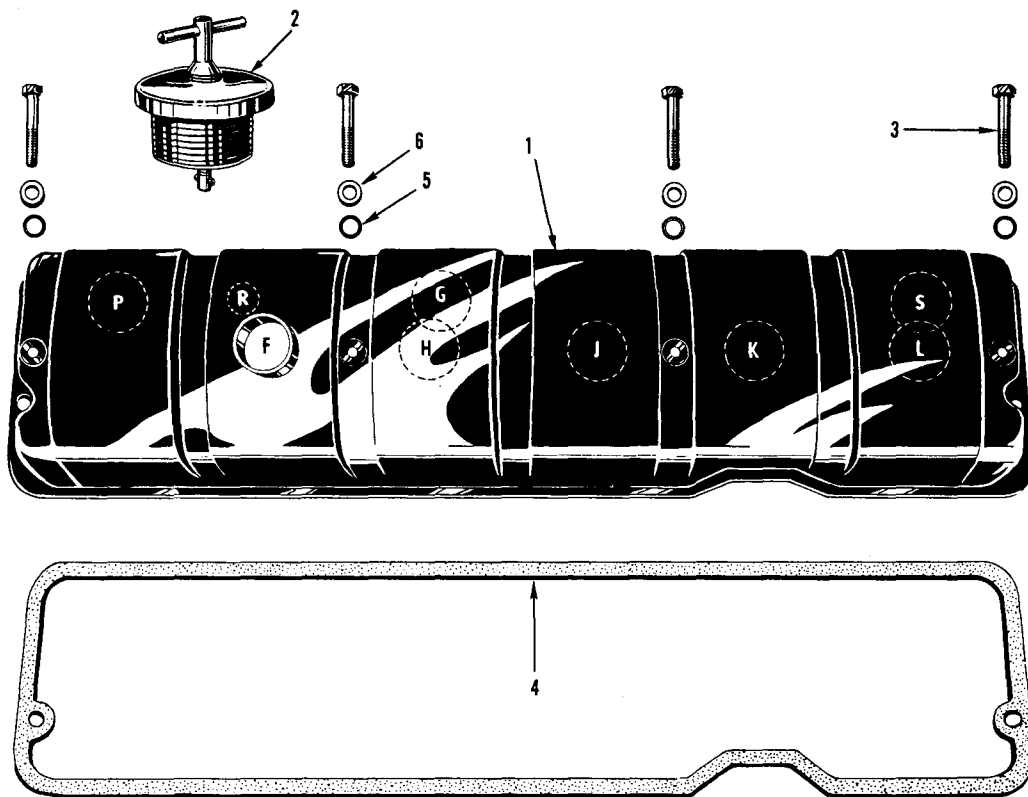
TAPPETS AND PUSH RODS
Figure 7



ROCKER LEVERS, SHAFT AND BEARINGS
Figure 8

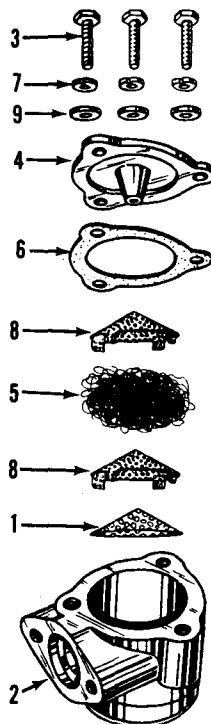


CYLINDER HEAD
FOUR-VALVE
Figure 9



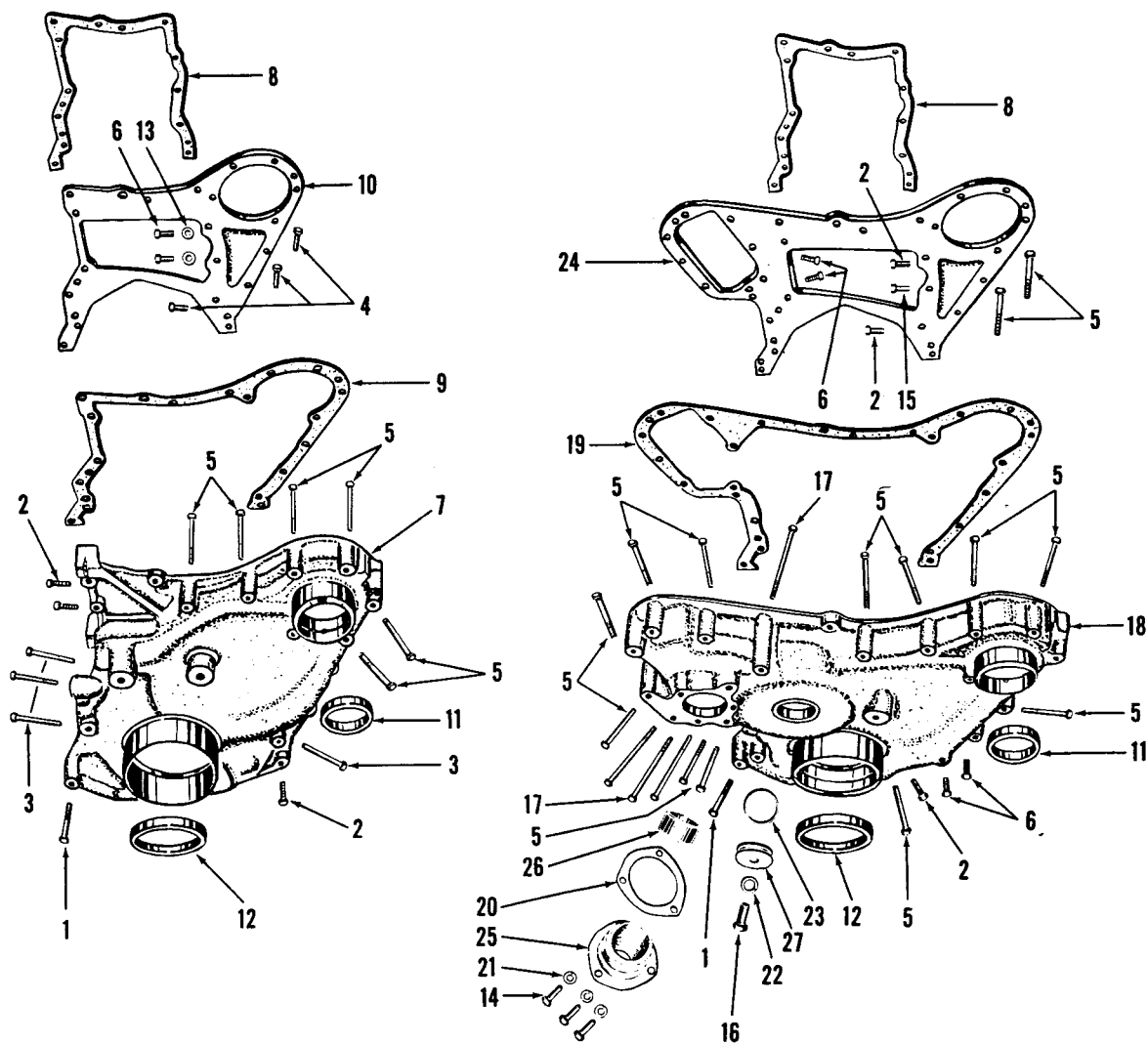
CYLINDER HEAD COVER

Figure 10

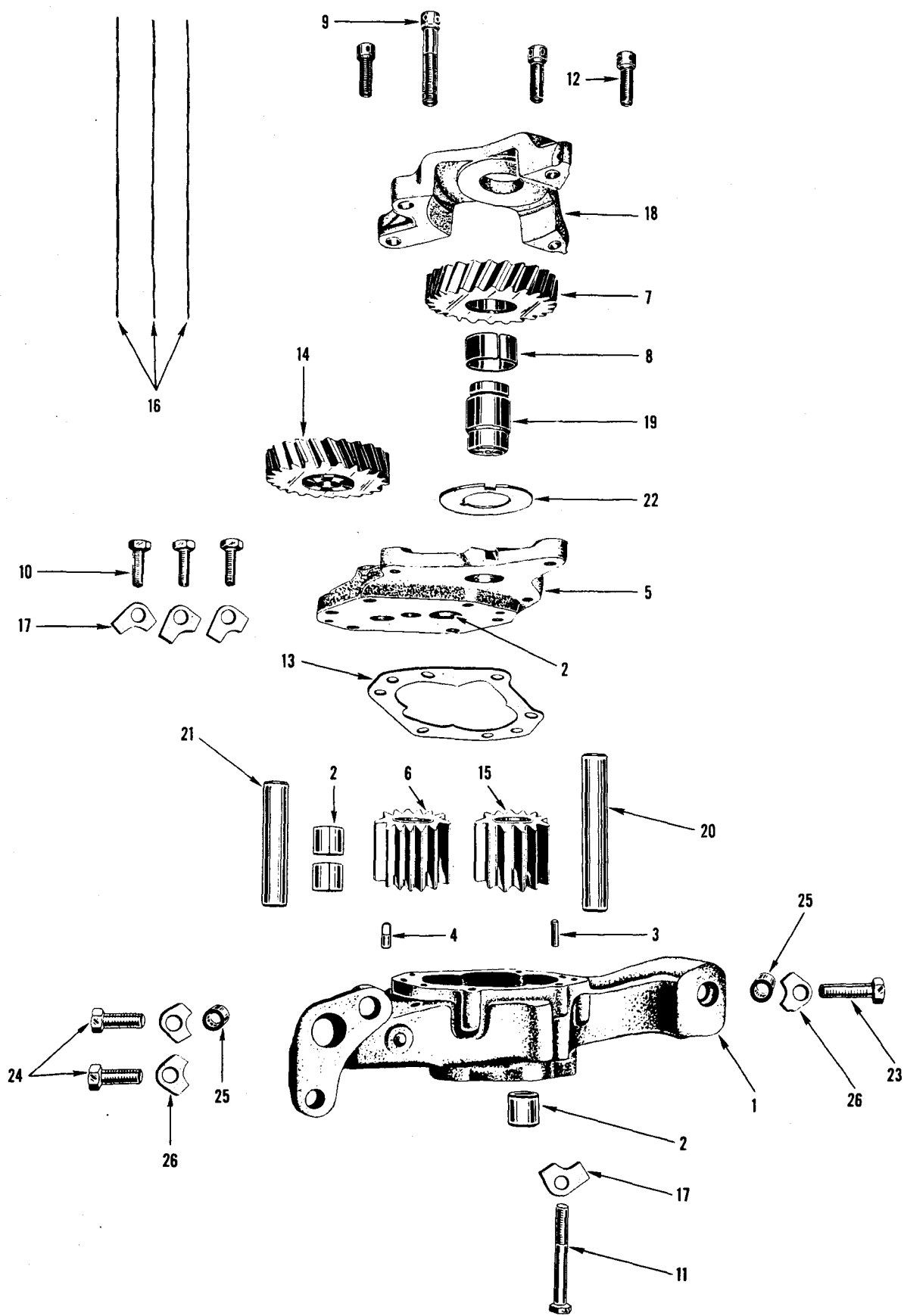


CRANKCASE VALVE BREATHER

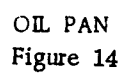
Figure 11

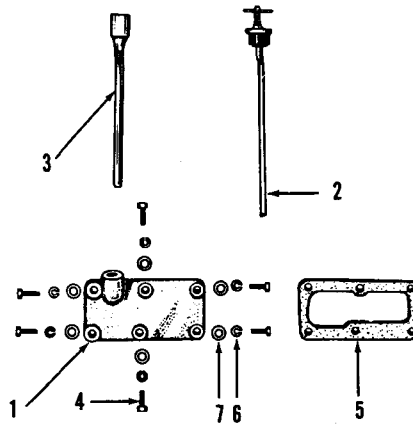


GEAR COVERS AND PLATES
Figure 12



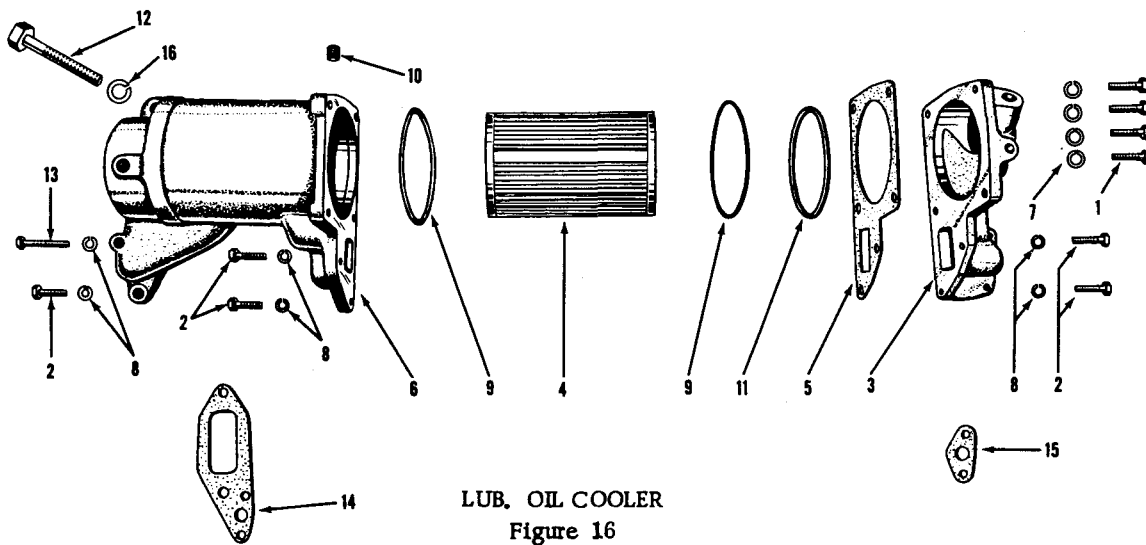
LUBRICATING OIL PUMP
Figure 13





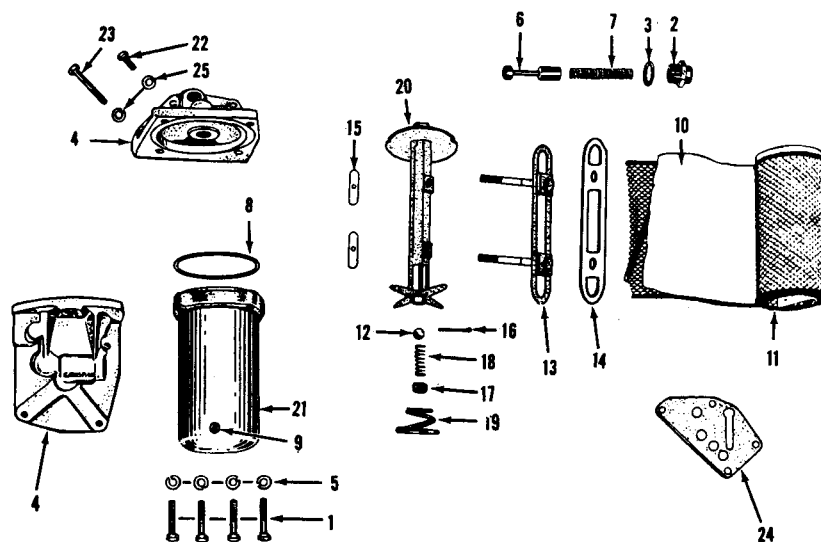
OIL GAUGE BRACKETS, TUBES AND DIPSTICKS

Figure 15



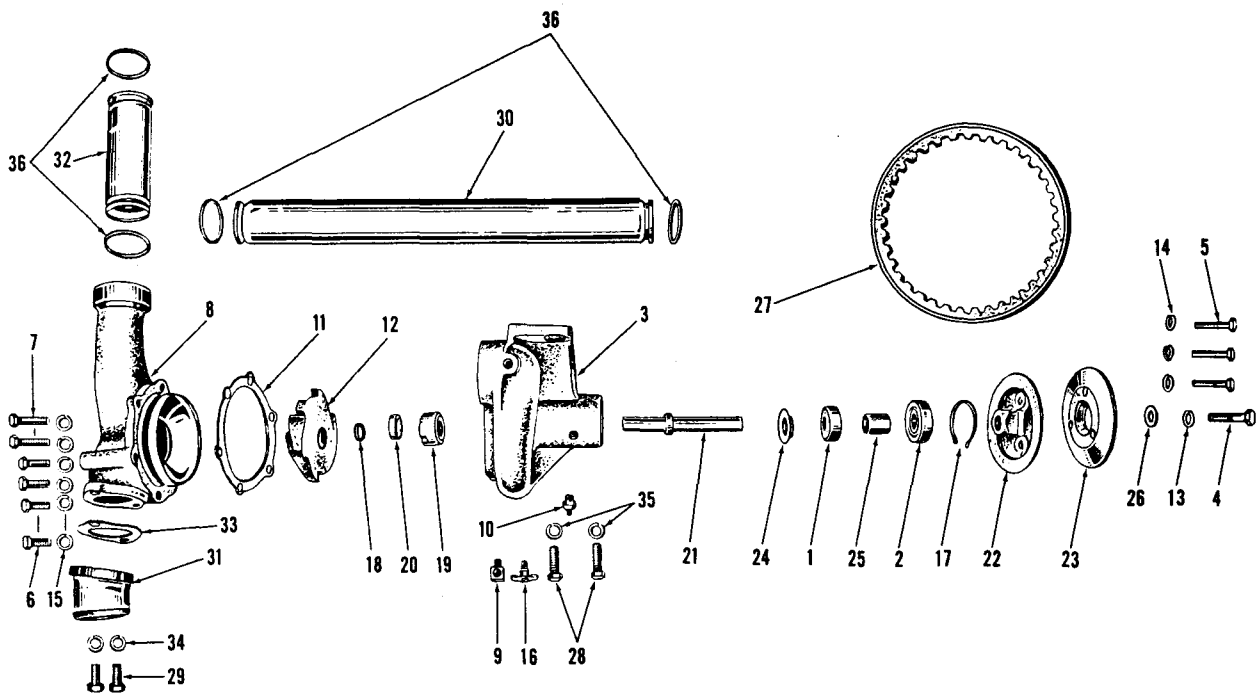
LUB. OIL COOLER

Figure 16



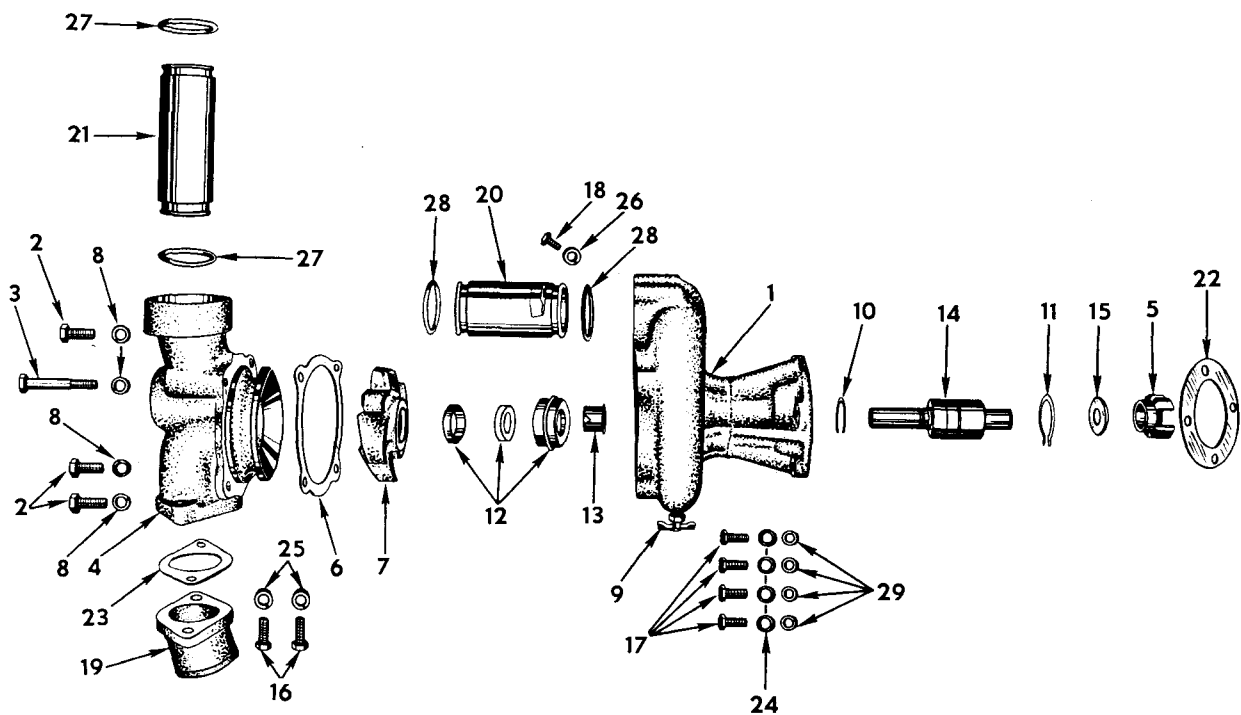
LUB. OIL FILTER

Figure 17



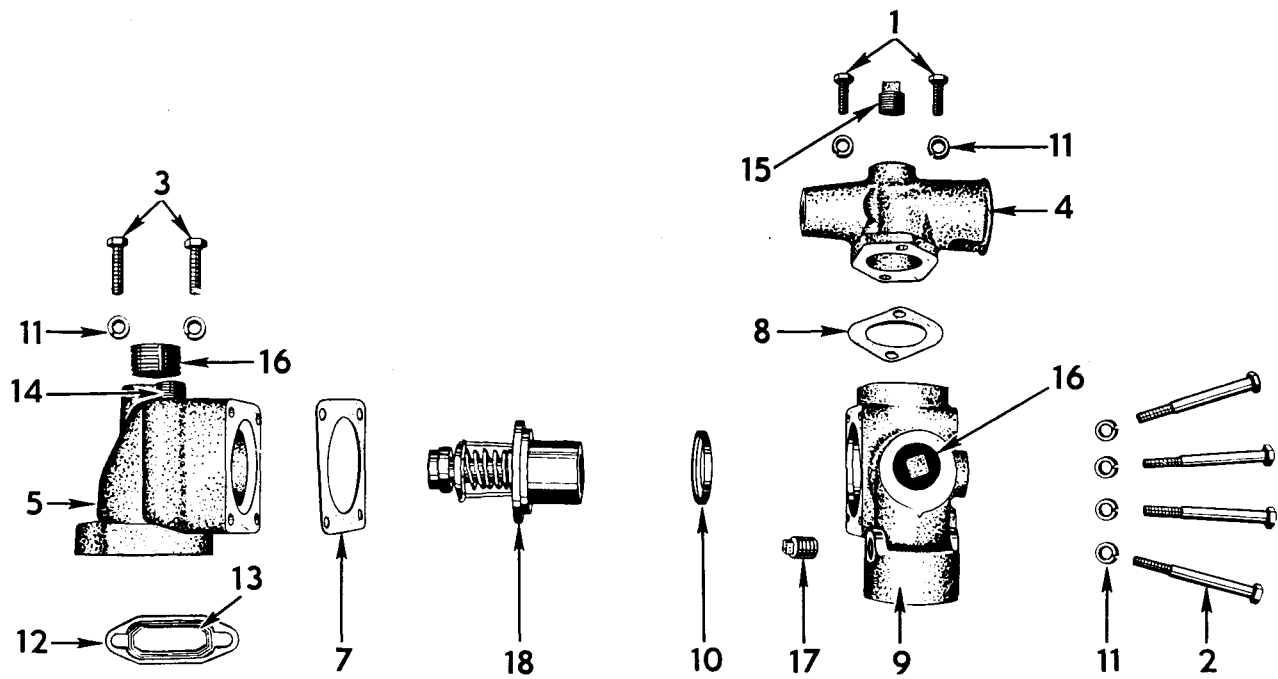
WATER PUMP (BELT DRIVEN).

Figure 18



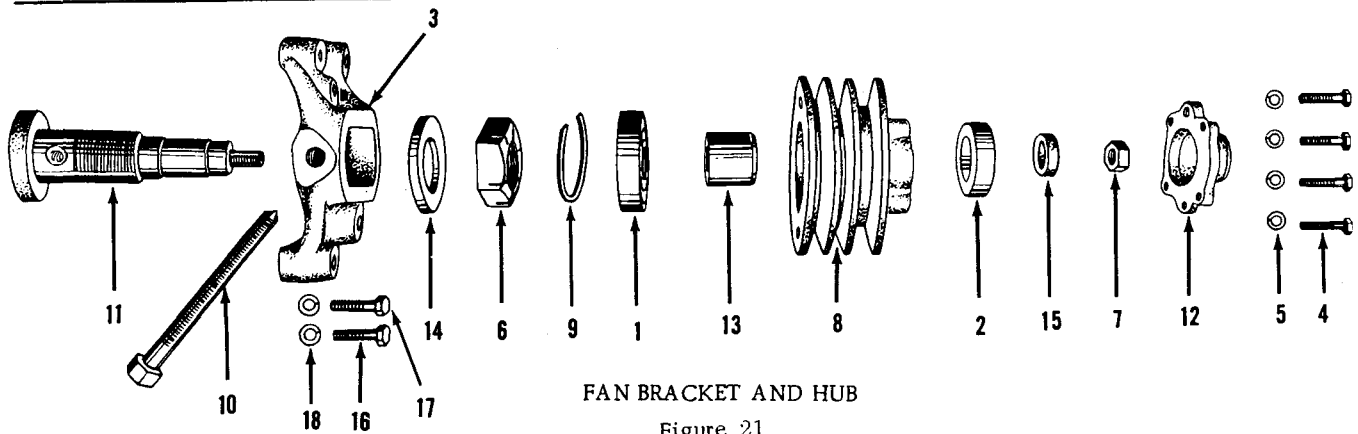
WATER PUMP (SUPERCHARGER DRIVEN)

Figure 19



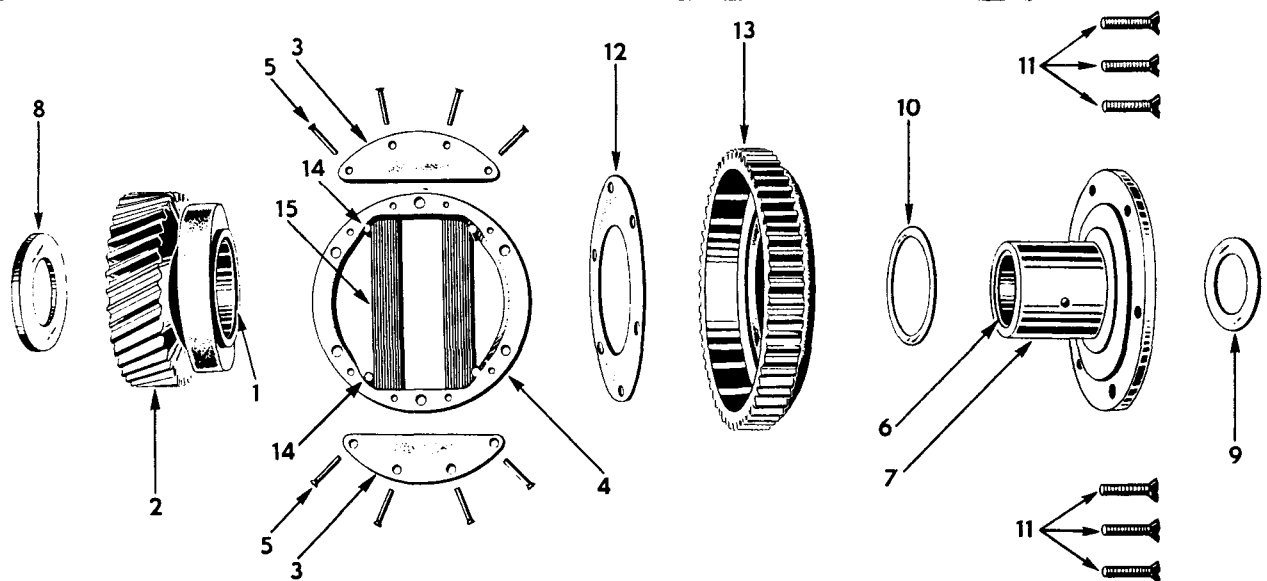
THERMOSTAT HOUSINGS AND WATER CONNECTIONS

Figure 20



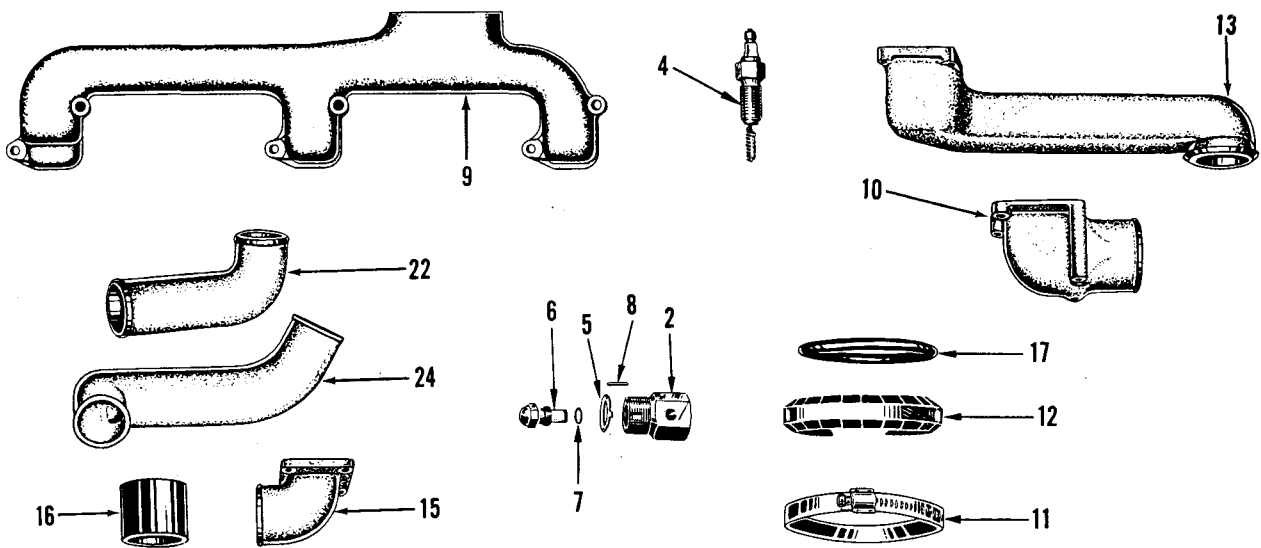
FAN BRACKET AND HUB

Figure 21



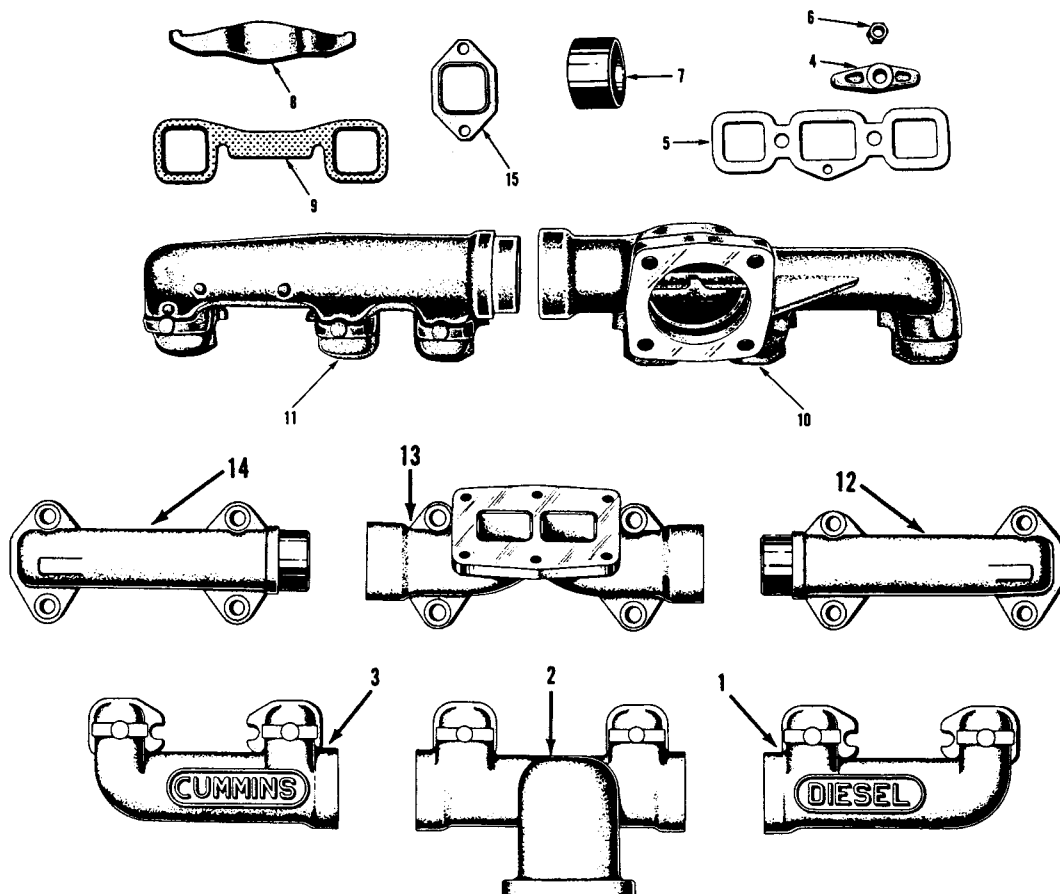
SUPERCHARGER IDLER GEAR and HUB

Figure 22



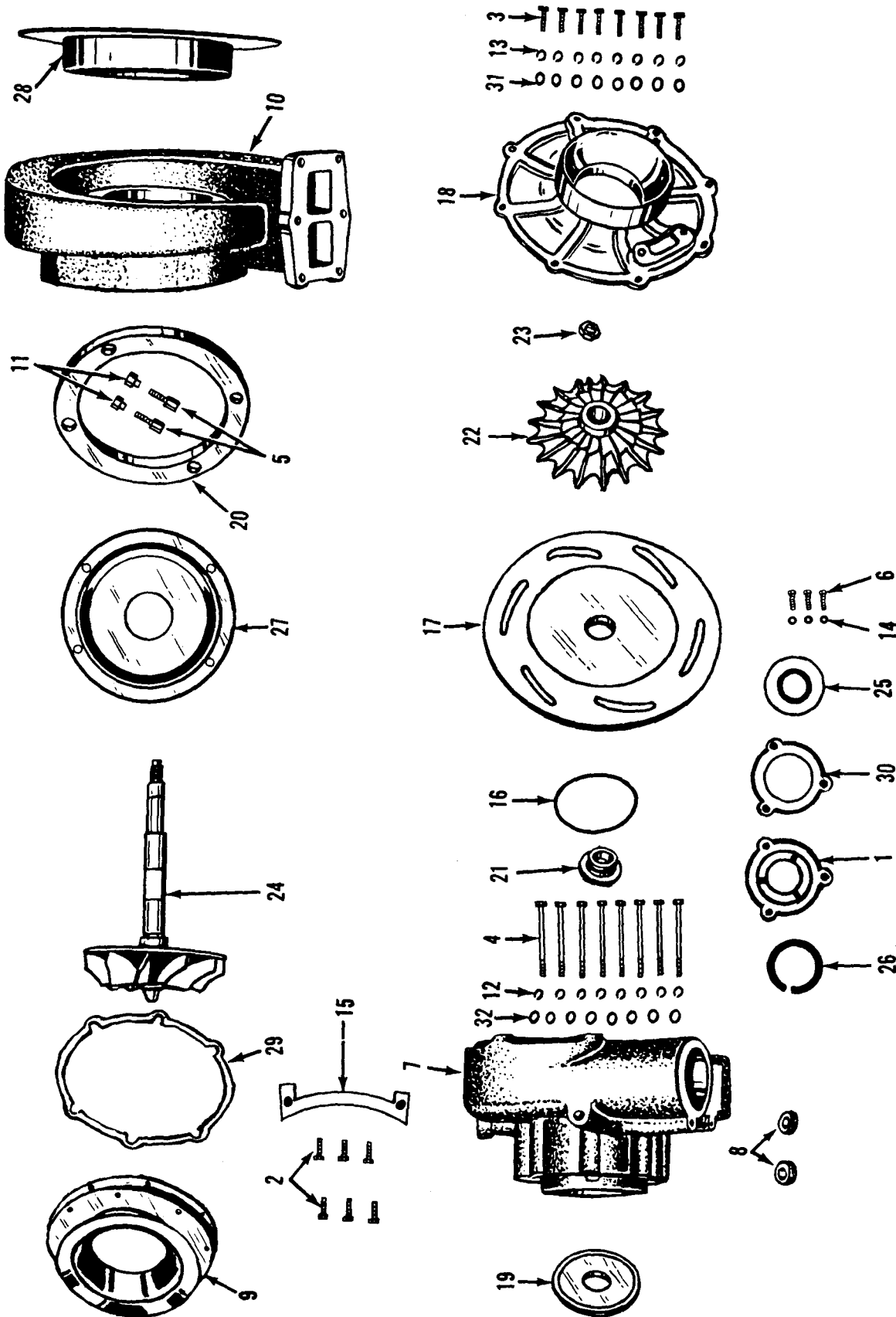
AIR INTAKE MANIFOLDS

Figure 23



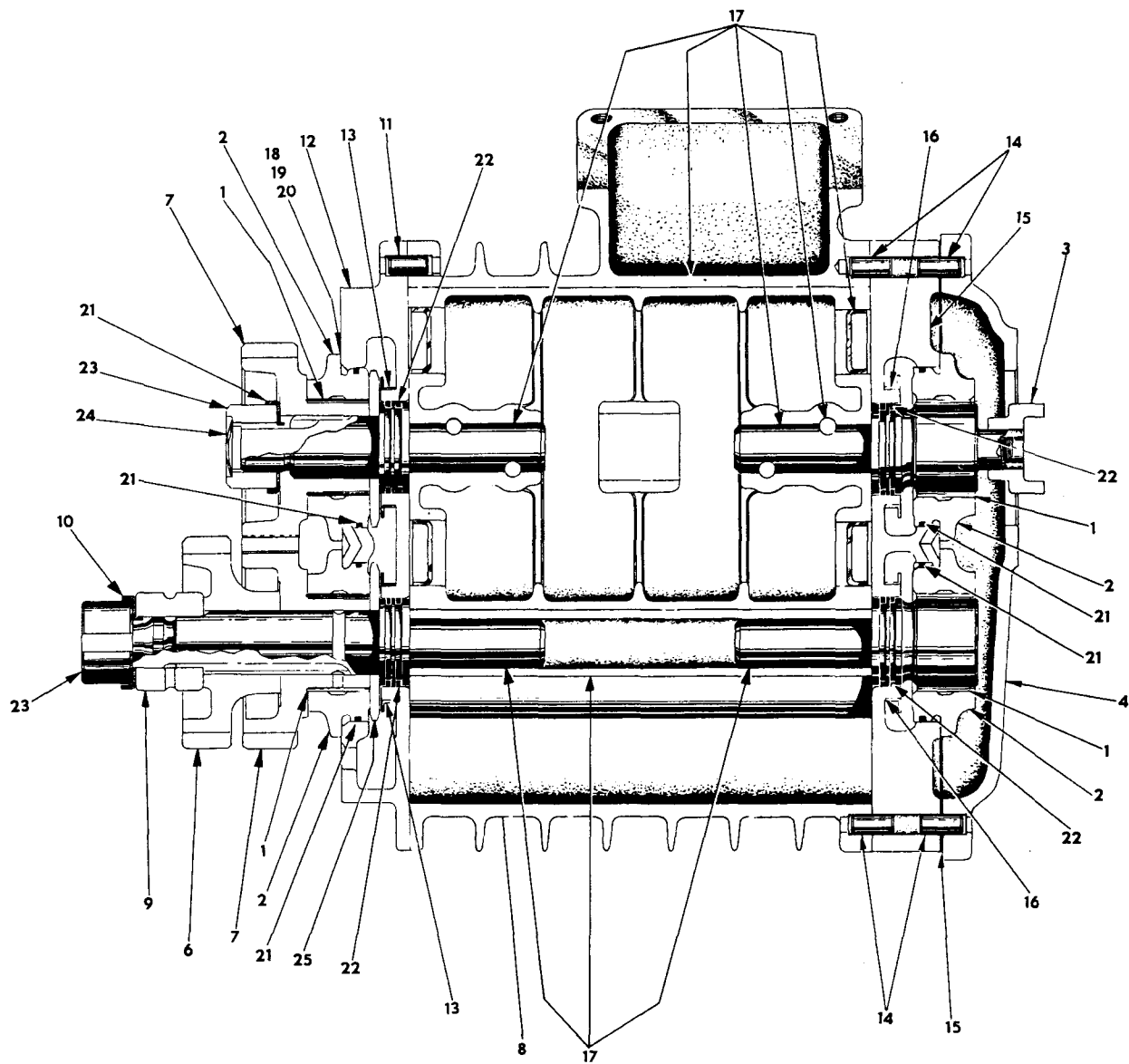
EXHAUST MANIFOLDS

Figure 24



Turbocharger

Figure 25



SUPERCHARGER
Figure 26

SPECIAL EQUIPMENT

to be completed by your Cummins Distributor at the time of the INITIAL INSPECTION.

DESCRIPTION	SERVICE PART NUMBER	DESCRIPTION	SERVICE PART NUMBER
BLOCK CYL.	BM.	GAUGE, TEMP.	
CRANKSHAFT		START. MOTOR	
VIB. DAMPER		GENERATOR	
LINER, CYL.		REG. VOLTAGE	
PISTON	BM.	SWITCH, MAG.	
ROD CONN.	BM.	SWITCH, S.P.	
CAMSHAFT		SWITCH, TOG.	
COVER, GEAR		FILTER, LUB.	
HEAD, CYL.	BM.	FILTER, FUEL	
PUMP, LUB.		CLEANER, AIR	
PUMP, WATER		HOOD, AIR CLEAN	
FAN HUB		AFTER CLEAN	
PUMP, FUEL		PRECL'ER, AIR	
VALVE F.P.S.O.		LUB. OIL COOLER	
GOV. HYDRAULIC		FAN	
INJECTOR	BM.	BELT, FAN	
COMPRESSOR		BELT, GEN.	
PUMP, VAC.		BELT, W. P.	
TURBOCHARGER		BELT, SEA W. P.	
SUPERCHARGER		RADIATOR	
MANIFOLD AIR		HEAT EXCHG.	
MANIFOLD EXH.		SEA WA. PUMP	
PAN, OIL		CLUTCH	
TUBE OIL GAUGE	BM.	RED. GEAR	
GA., OIL LEVEL	BM.	REV. GEAR	
FLYWHEEL HOUS.		F. P. TAKE OFF	
FLYWHEEL	BM.	TORQUE CONV.	
RING GEAR		T. C. COOLER	

This book has been specially prepared for Cummins Model _____

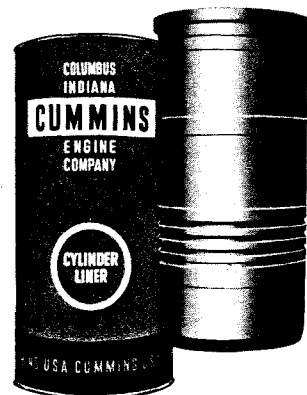
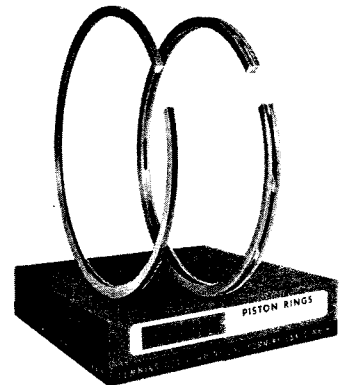
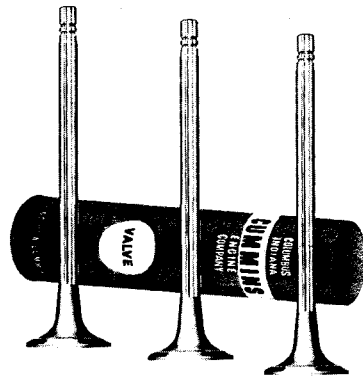
Diesel Engine, serial number _____

Signed _____

Authorized Cummins Service Representative

GENUINE CUMMINS PARTS MEAN...

QUALITY!



YOU OWN THE BEST... REPAIR WITH THE BEST