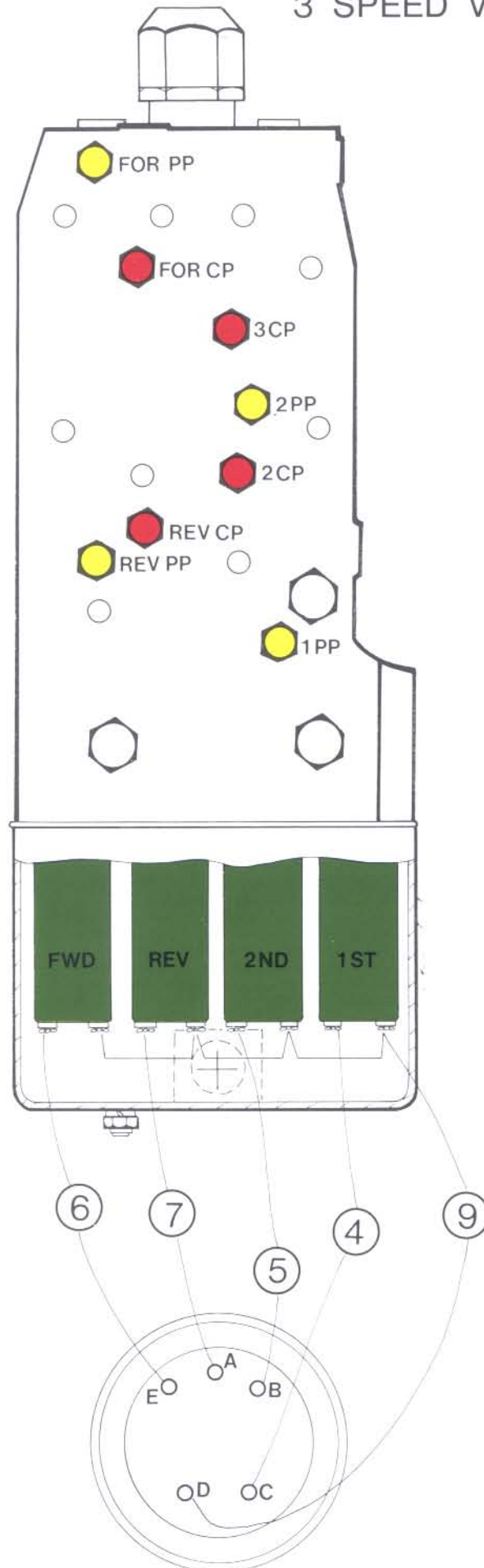


18000 SERIES TRANSMISSION

ELECTRIC SHIFT CONTROL VALVE 3 SPEED VERSION



PILOT AND CLUTCH PRESSURE CHECK POINTS

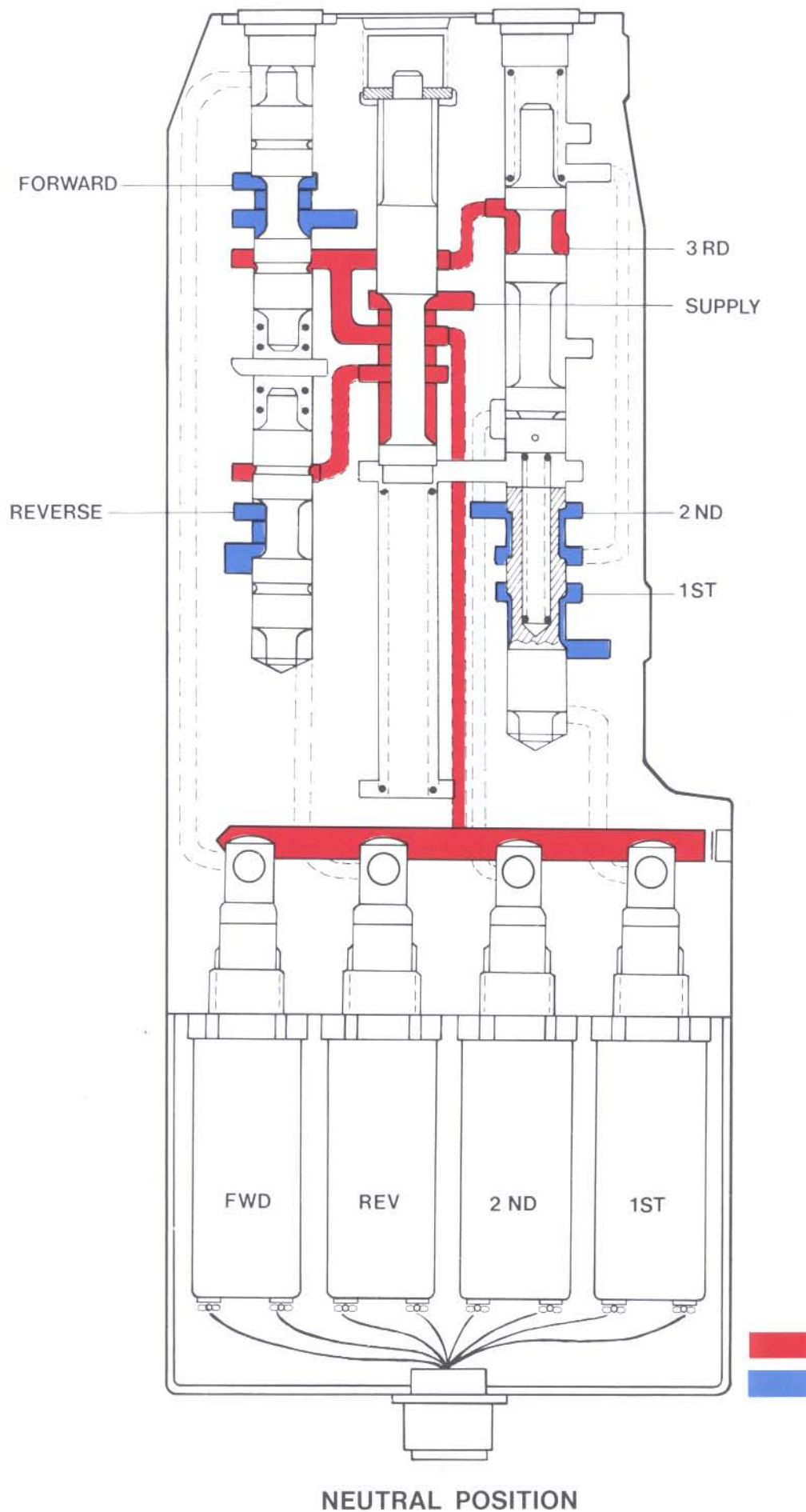
For. PP = Forward pilot pressure
 Rev. PP = Reverse pilot pressure
 For. CP = Forward clutch pressure
 Rev. CP = Reverse clutch pressure
 1 PP = 1st pilot pressure
 2 PP = 2nd pilot pressure
 2 CP = 2nd clutch pressure
 3 CP = 3rd clutch pressure

■ CLUTCH PRESSURE
■ PILOT PRESSURE

FOR CORRECT WIRING, SEE DIAGRAM

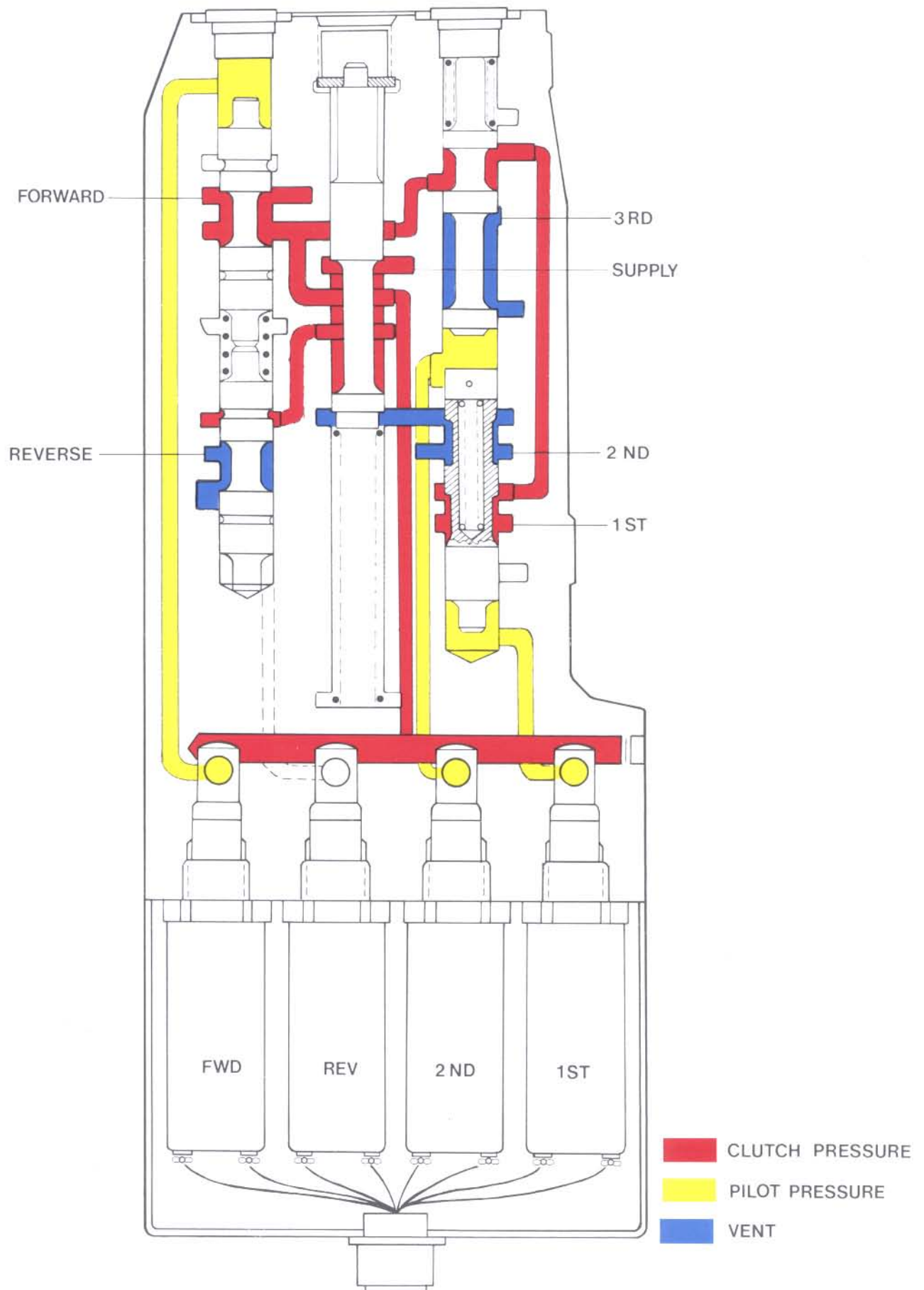
18000 SERIES TRANSMISSION

ELECTRIC SHIFT CONTROL VALVE 3 SPEED VERSION



18000 SERIES TRANSMISSION

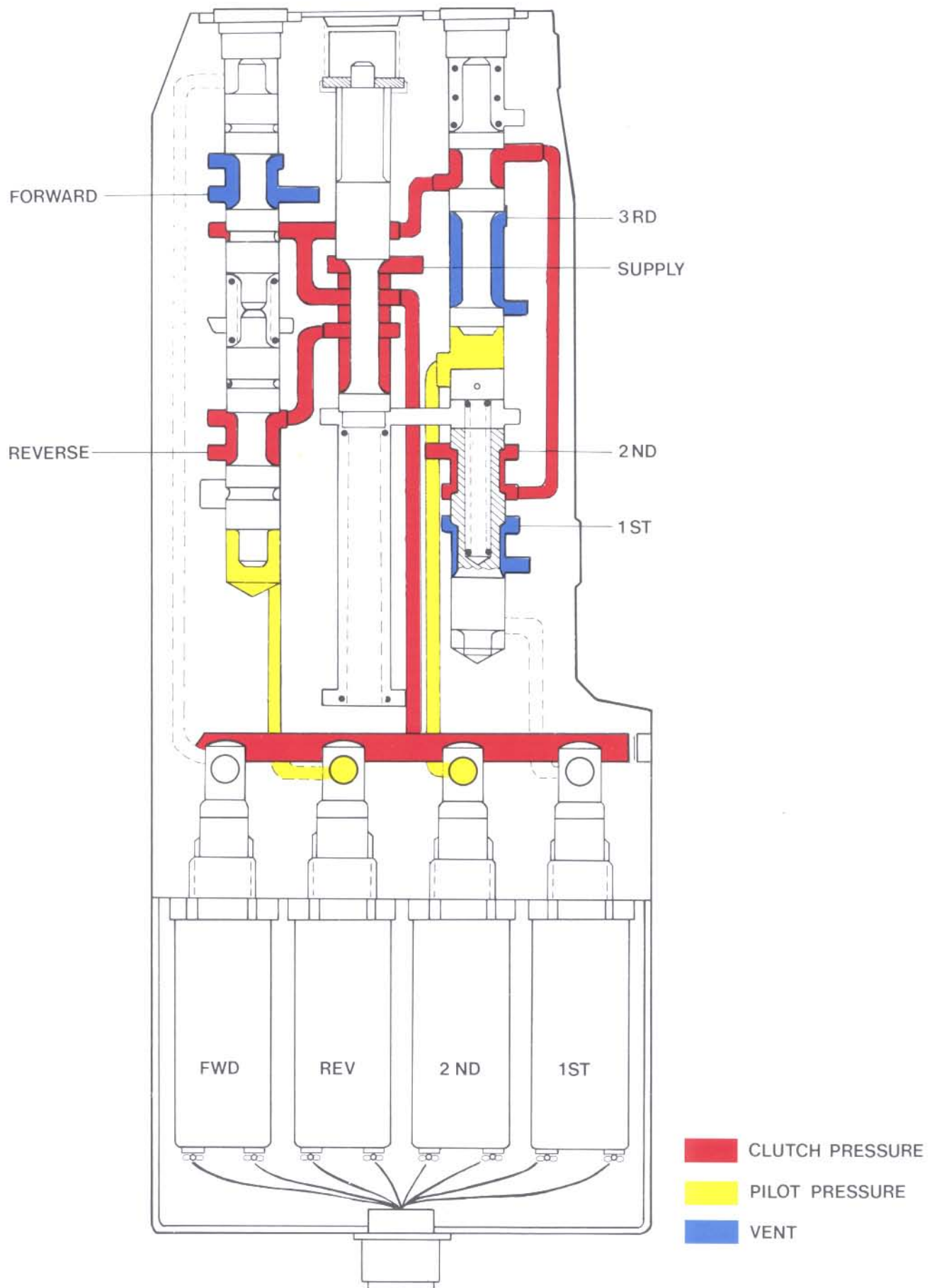
ELECTRIC SHIFT CONTROL VALVE 3 SPEED VERSION



1ST SPEED FORWARD ENGAGED

18000 SERIES TRANSMISSION

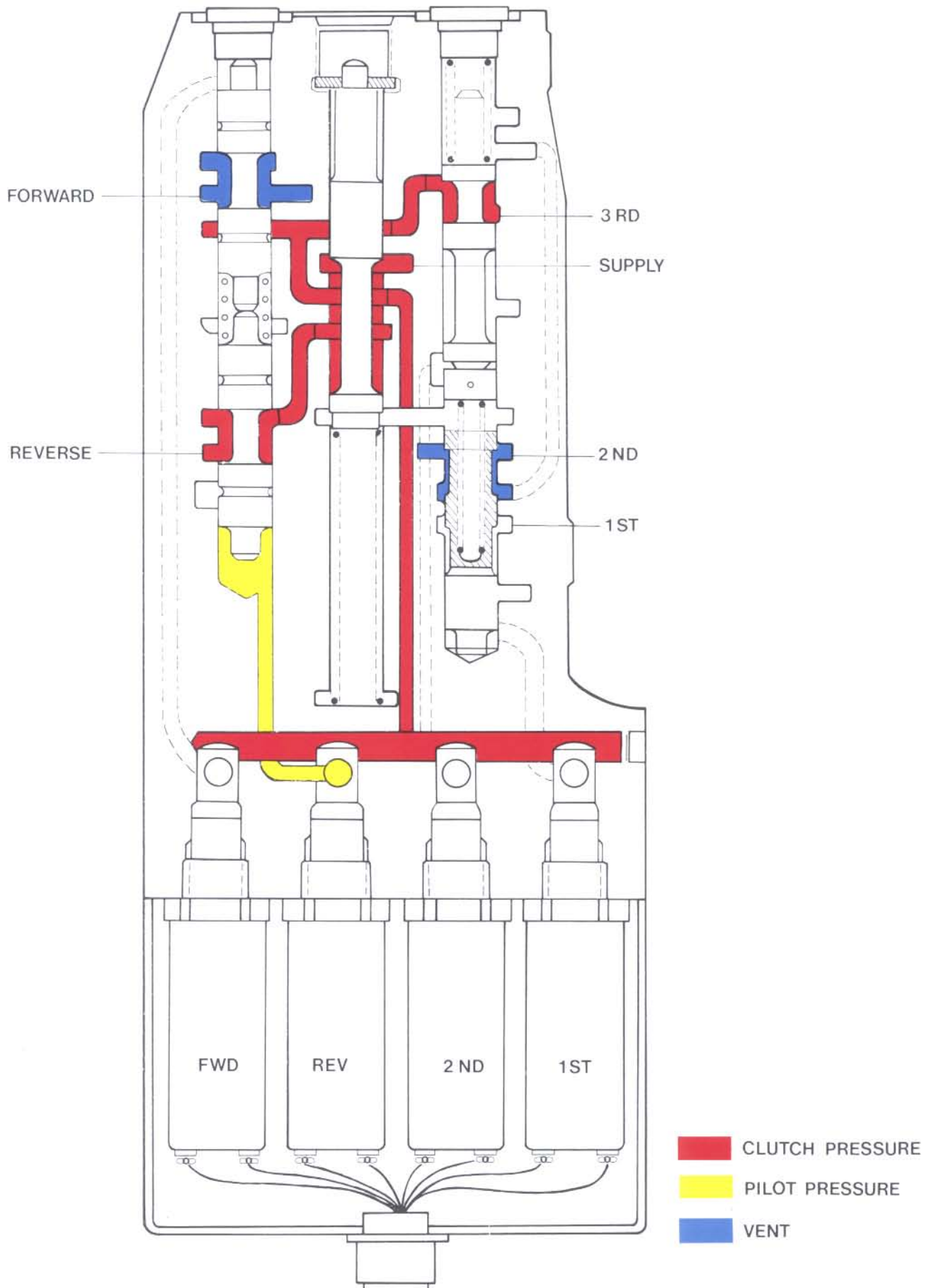
ELECTRIC SHIFT CONTROL VALVE
3 SPEED VERSION



2RD SPEED REVERSE ENGAGED

18000 SERIES TRANSMISSION

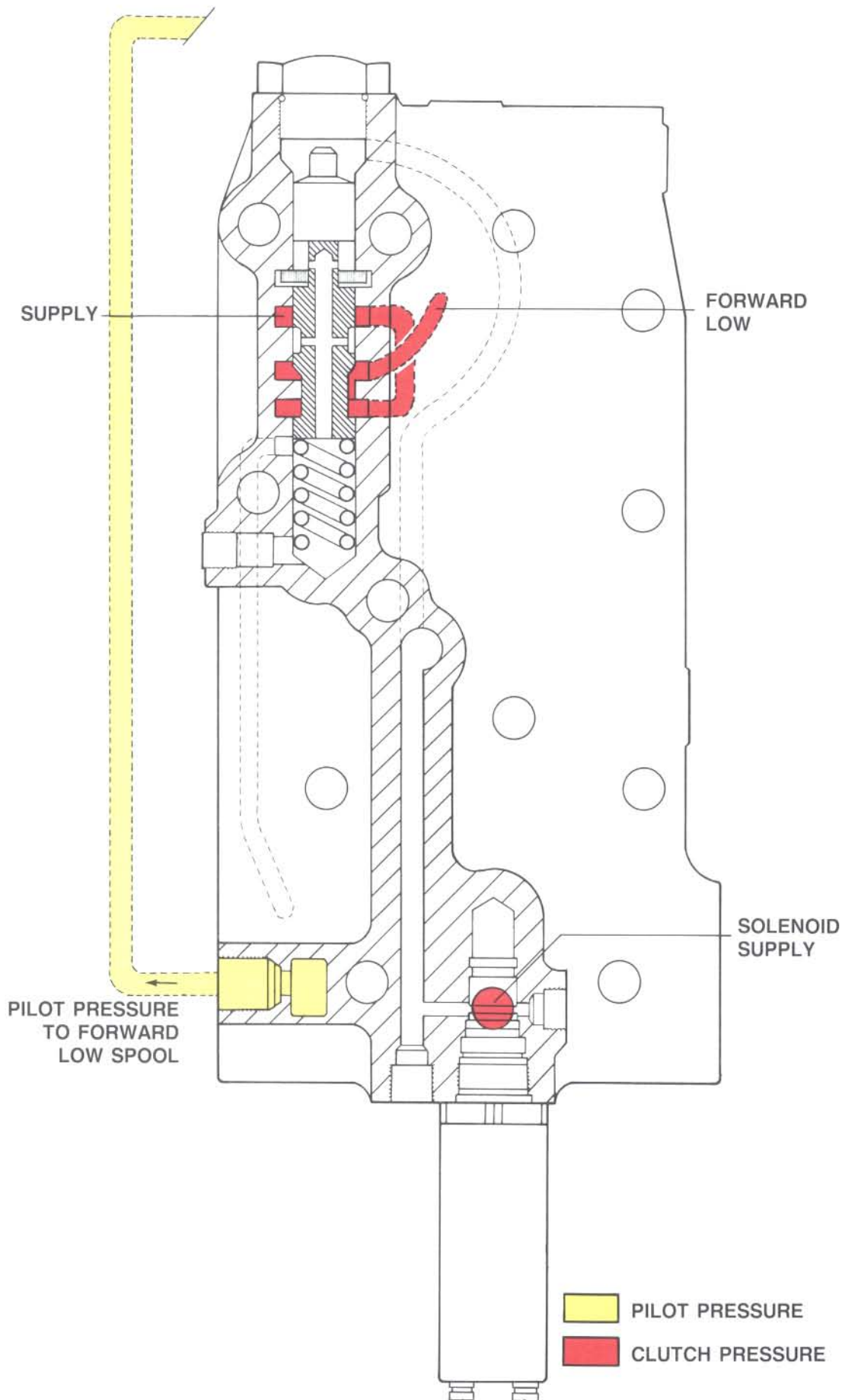
ELECTRIC SHIFT CONTROL VALVE 3 SPEED VERSION



3RD SPEED REVERSE ENGAGED

18000 SERIES TRANSMISSION

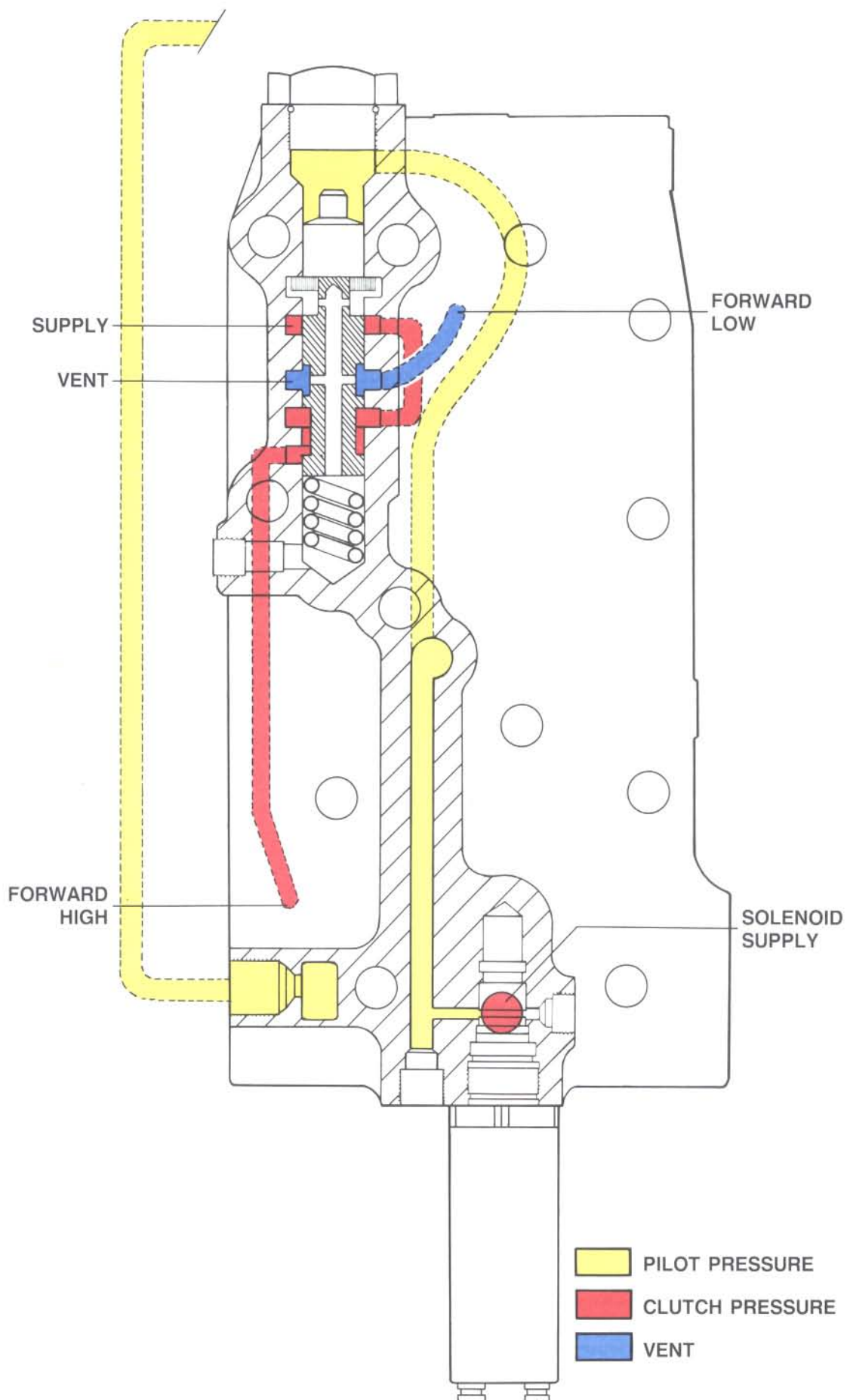
ELECTRIC SHIFT CONTROL VALVE 6 SPEED FULL POWERSHIFT



FORWARD LOW ENGAGED

18000 SERIES TRANSMISSION

ELECTRIC SHIFT CONTROL VALVE
6 SPEED FULL POWERSHIFT



FORWARD HIGH ENGAGED