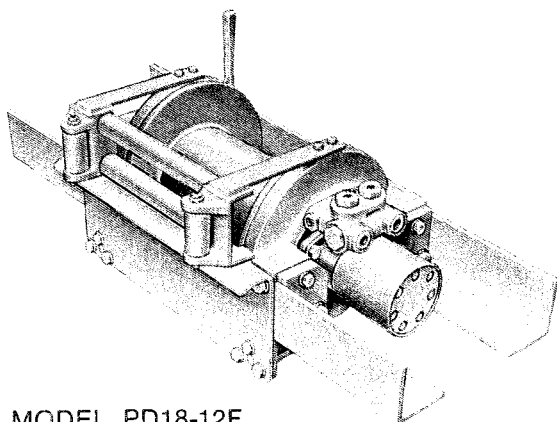
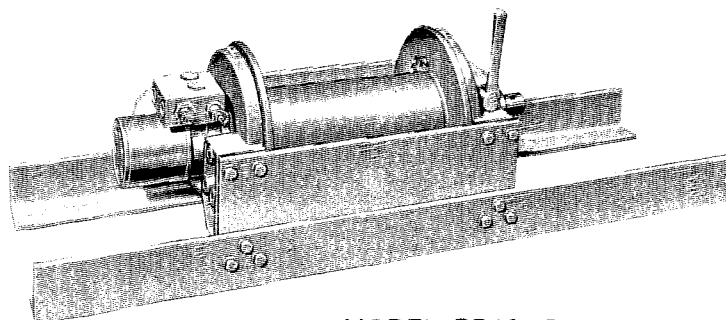


BRADEN MODEL PD18



MODEL PD18-12F



MODEL PD18-15

HYDRAULIC PLANETARY WINCH

**compact, highly efficient
18,000 pound line pull capacity*
high speed utility shaft**

The compact size and weight plus the high efficiency and thermal capacity of the PD18 winches makes them a natural for vehicle applications in the utility, construction and petroleum industries. ■ The winch is powered by a Racine MAB-16 hydraulic motor which is attached directly to the side plate. ■ The brake valve insures smooth operation of the winch while raising or lowering a load. ■ The planetary gear system of the PD18 is located inside the cable drum along with the braking system which is spring engaged and hydraulically released. The brake is designed to hold the load whenever the winch is stopped or in case of a power failure or hydraulic pressure loss. ■ The cable drum is declutchable for free spooling of cable or independent extension shaft operation. ■ A clutch engagement indicator is provided. ■ These versatile units are available in both underslung and upright models for front and behind-the-cab mountings. Front mounted units are equipped with four-way cable roller assemblies and both front and rear mounted units are available with A. T. & T. extension shafts to curbside. ■ Select the PD18 model which will best serve your needs from a leader in winch development and manufacturing since 1924.

*Applies to dynamic loading conditions only.
12,000 pound hoisting capacity.

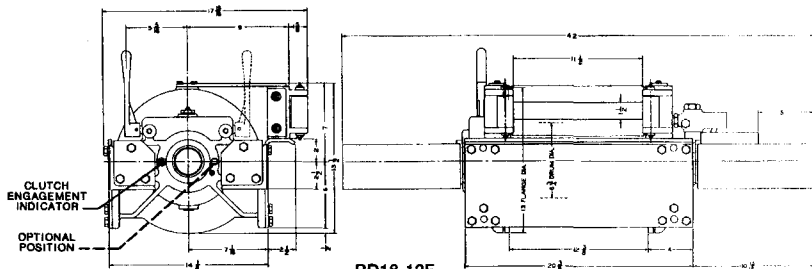


BRADEN WINCH

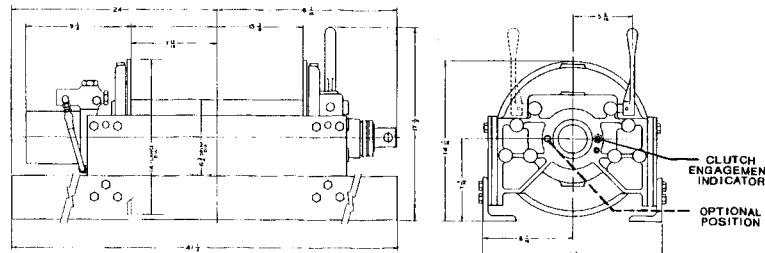
DIVISION OF BRADEN INDUSTRIES, INC.

PHONE: 918 — 251-8511 • BROKEN ARROW, OKLAHOMA 74012

BRADEN PD18 – DIMENSIONAL INFORMATION



PD18-12F

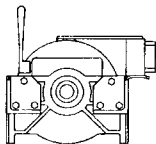


PD18-15

MODEL DATA

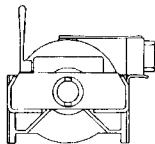
FRONT MOUNT UNITS — 12" DRUM WIDTH

(Extension Shafts To Curbside Only)

**MODEL PD18-12F**

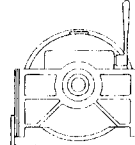
End mounted angles.
Four-way roller assembly.

Approximate weight:
400 pounds.



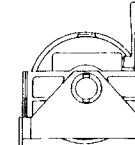
MODEL PD18-12FEB

**Model PD18-12F with
44" extension shaft
and outboard bearing.
Four-way roller assembly.
Approximate weight:
450 pounds.**



REAR MOUNT UNITS — 15 $\frac{3}{4}$ " DRUM WIDTH

(Extension Shafts to Curbside Only)

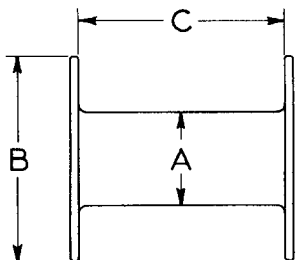


MODEL PD18-15EB

Model PD18-15 with
46½" extension shaft
and outboard bearing.

Approximate weight:
515 pounds.

PERFORMANCE DATA



Cable Drum Dimensions

MODEL	DRUM DIMENSIONS (INCHES)			CABLE SIZE	CABLE CAPACITY (FEET)	LINE PULL (LBS.), LINE SPEED (FPM), DRUM CAPACITY (FT.) 30 G.P.M. @ 2200 P.S.I.***																											
						1st LAYER				2nd LAYER (TOTAL)				3rd LAYER (TOTAL)				4th LAYER (TOTAL)				5th LAYER (TOTAL)				6th LAYER (TOTAL)				7th LAYER (TOTAL)			
	POUNDS		FPM FT.			POUNDS		FPM FT.		POUNDS		FPM FT.		POUNDS		FPM FT.		POUNDS		FPM FT.		POUNDS		FPM FT.		POUNDS		FPM FT.					
	DYNAMIC	STATIC					DYNAMIC	STATIC			DYNAMIC	STATIC			DYNAMIC	STATIC			DYNAMIC	STATIC			DYNAMIC	STATIC			DYNAMIC	STATIC					
PD18-12F & PD18-12FEB	6%	13	12%	1/4"	230	18,000	12,000	38	35	15,400	10,300	45	75	13,400	8,900	51	120	11,900	7,900	58	175	10,700	7,100	85	230	—	—	—	—				
				5/16	250	18,000	12,000	38	38	15,600	10,400	44	82	13,700	9,100	50	130	12,300	8,200	56	190	11,100	7,400	62	250	—	—	—	—				
				3/4	340	18,000	12,000	38	43	15,800	10,500	43	91	14,100	9,300	48	145	12,700	8,400	54	210	11,600	7,700	59	270	10,600	7,100	64	340	—	—	—	—
PD18-15 & PD18-15EB	6%	14	15%	1/4"	285	18,000	12,000	38	40	15,400	10,300	45	95	13,400	8,900	51	150	11,900	7,900	58	220	10,700	7,100	85	285	—	—	—	—				
				5/16	390	18,000	12,000	38	47	15,600	10,400	44	100	13,700	9,100	50	160	12,300	8,200	56	235	11,100	7,400	62	310	10,100	6,700	68	390	—	—	—	—
				3/4	520	18,000	12,000	38	53	15,800	10,500	43	110	14,100	9,300	48	180	12,700	8,400	54	260	11,600	7,700	59	335	10,600	7,100	64	420	9,900	6,600	69	520

- Hoisting capacity

* Recommended cable size.

****Maximum flow @ 2000 P.S.I. is 16 G.P.M.**

HIGH SPEED EXTENSION SHAFT PERFORMANCE DATA

Flow in G.P.M.	6	10	18	30
Full Load R.P.M.	17	29	52	85
No Load R.P.M.	20	33	60	100

Maximum allowable load on extension shaft:
3000 pounds on 7" diameter capstan.
1000 pounds on 24" diameter C. R. Reel.

WARNING:

GOODS ARE NOT DESIGNED FOR USE IN THE LIFTING OR MOVING OF PERSONS!

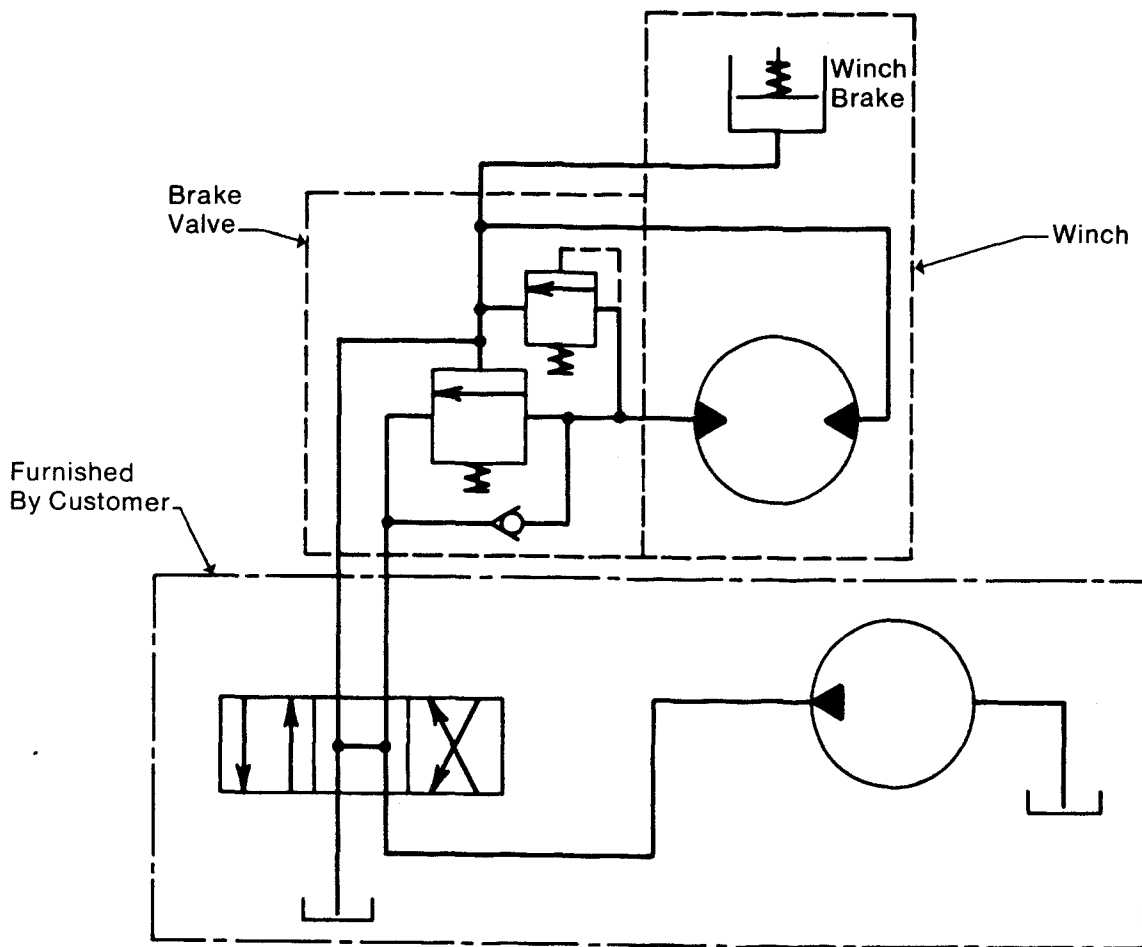
The winches described herein are neither designed nor intended for use or application to equipment used in the lifting or moving of persons.

The cable clamps alone on winches are not designed to hold rated loads. Therefore, a minimum of 5 wraps of cable must be left on drum barrel to achieve rated load.

WARRANTY

Braden warrants each new winch to be free from defects in material and workmanship for a period of one (1) year from date of purchase.

WINCH HYDRAULIC SCHEMATIC



Winch Ports

$\frac{7}{8}$ — 14 Straight Thread O-ring

Pipe Size Recommended

1" Double Extra Heavy

FEATURES

CABLE DRUM — Welded steel for impact resistance.

END SUPPORTS — Ductile iron castings.

MOUNTING — Heavy duty structural steel angle.

PLANETARY GEARS — Alloy steel, case hardened and tempered.

BRAKE VALVE — For controlled lowering of load.

EXTENSION SHAFT — High tensile steel, strain tempered.

DRUM CLUTCH — Heat treated ductile iron. Clutch engagement indicator.

BRAKE — Multiple disc, oil cooled.

REDUCTION RATIO — 25:1.

EFFICIENCY RATING — 80%

STANDARD MOTOR — Racine MAB-16.